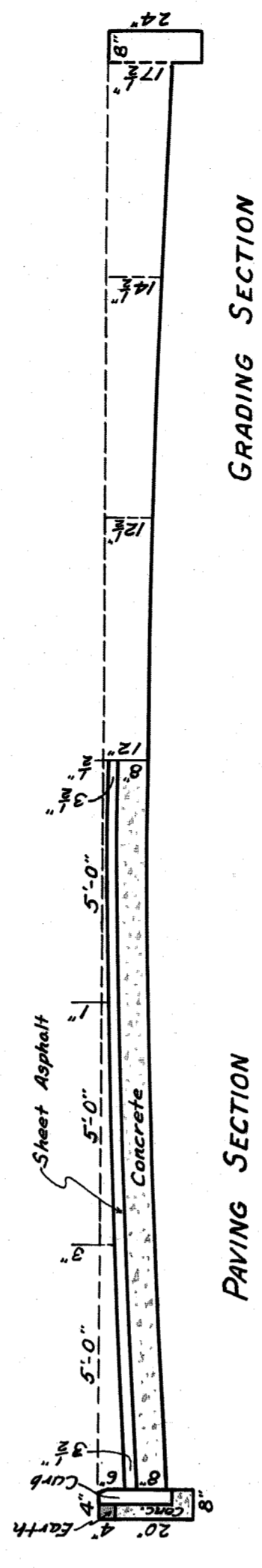
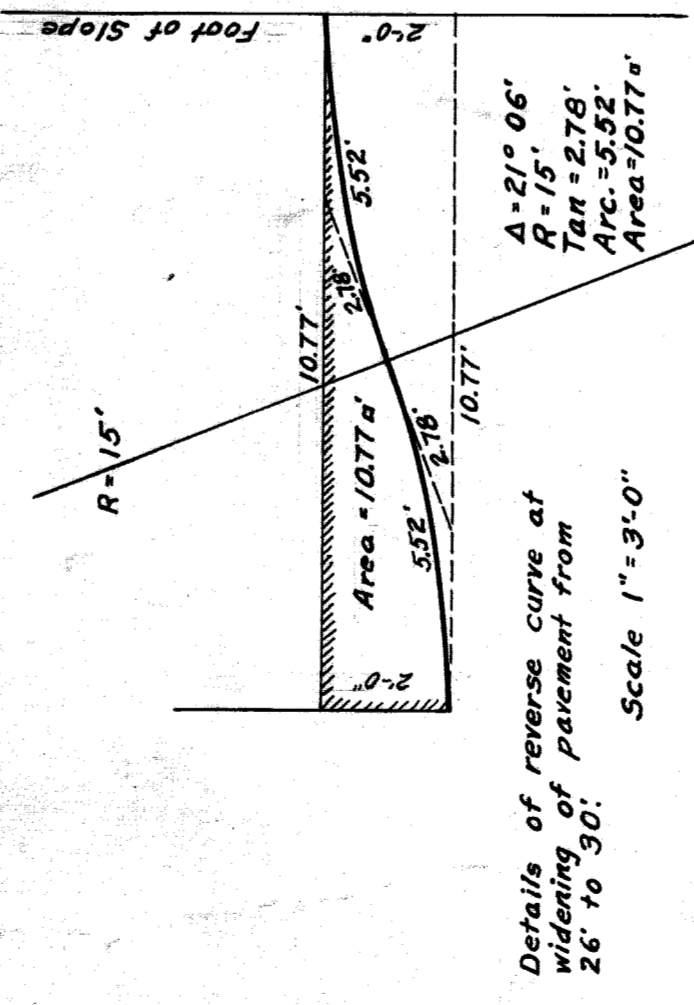


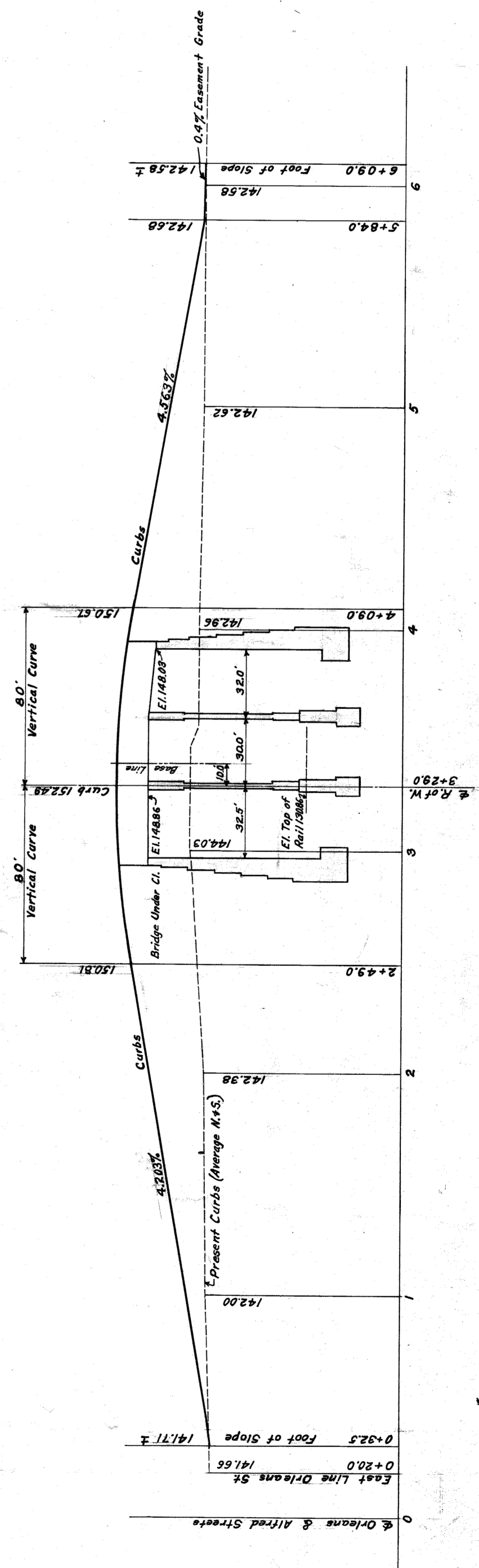
PLAN



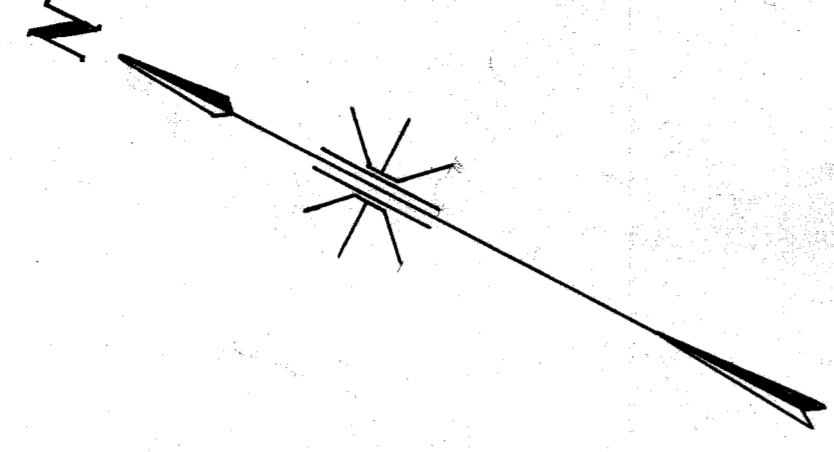
GRADING SECTION

SHEET ASPHALT 30' WD.
WITH 8" FOUNDATION

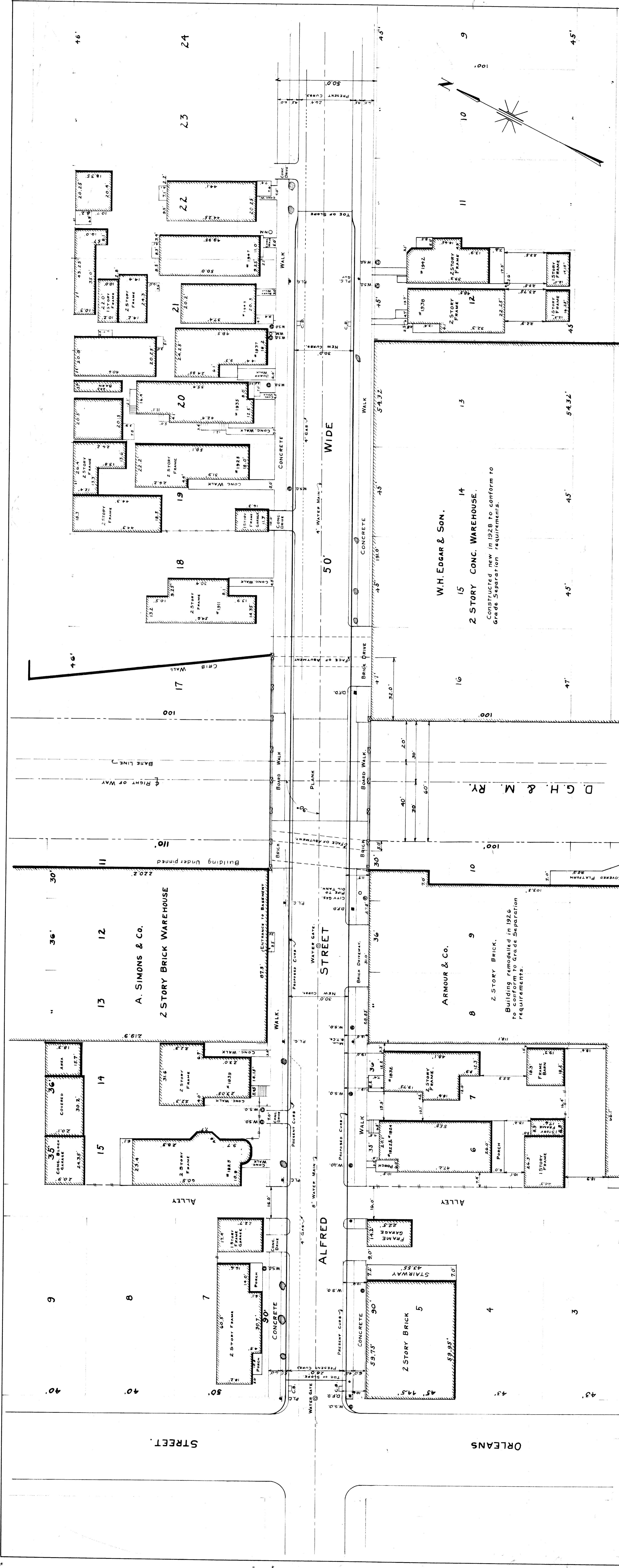
PAVING SECTION



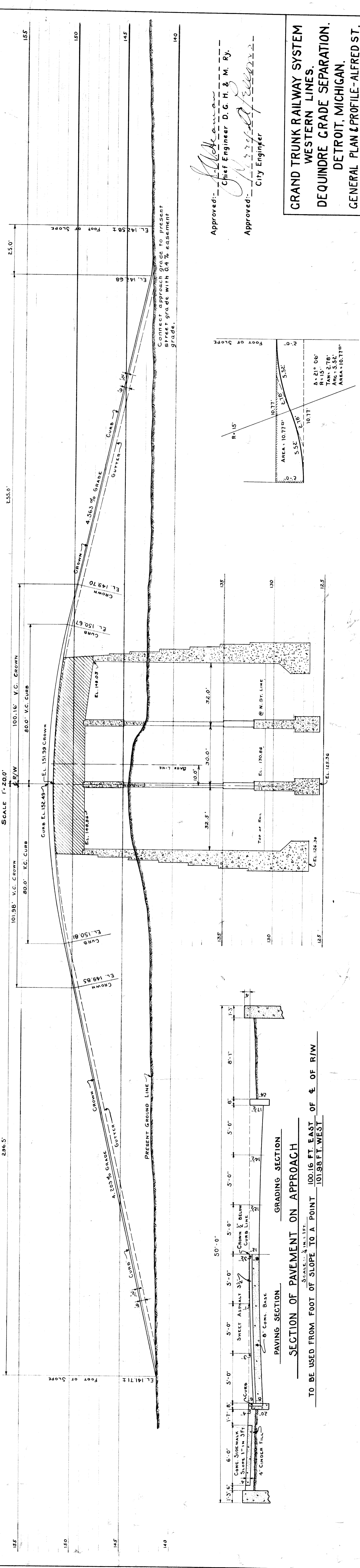
PROFILE



APPROVED *[Signature]* **APR 23 1929**
 CHIEF ENGINEER *[Signature]*
 CITY ENGINEER SYSTEM WESTERN LINES
CITY OF DETROIT
 DEPARTMENT OF PUBLIC WORKS
 CITY ENGINEER'S OFFICE
 DEPARTMENT OF GRADE SEPARATION & BRIDGES
 DEQUINDRE ST. GRADE SEPARATION
ALFRED ST.
 Made by J.W.K. Scales March 1929
 Checked by R.S. Plan 1"=40'
 Vertical 1"=10'
 Books 332 & 373



GENERAL PLAN
SCALE 1"=200'



PROFILE
VERTICAL 1"=4.0 FT.
HORIZONTAL 1"=200 FT.

SECTION OF PAVEMENT ON APPROACH
SCALE 1"=1 FT.

TO BE USED FROM FOOT OF SLOPE TO A POINT 100.16 FT. EAST OF & OF R/W
101.98 FT. WEST

Approved: *[Signature]*
Chief Engineer D. G. H. & M. Ry.
Approved: *[Signature]*
City Engineer

**GRAND TRUNK RAILWAY SYSTEM
WESTERN LINES.
DEQUINDE GRADE SEPARATION.
DETROIT, MICHIGAN.
GENERAL PLAN & PROFILE-ALFRED ST.
SCALES AS NOTED.**

DR. HSB. OFFICE OF CHIEF ENGINEER JOURNAL NO.
TR. L.S. DETROIT, MICHIGAN. W-3159
CH. U.S. JANUARY 30, 1923. FILE

DETAILS OF REVERSE CURVE AT WIDENING OF PAVEMENT FROM 26 FT. TO 30 FT.
SCALE: 1"=10 FT.

BILL OF STRUCTURAL STEEL

Location	No.	Mark	Size	Length	Section Index		Remarks
					BB	DD	
Rowway East Span	17	Bm 1	20" x 10" x 1/2"	33'-0"	BB	DD	No Fabrication
Rowway West Span	18	Bm 2	20" x 10" x 1/2"	33'-0"	BB	DD	
Rowway Center Span	19	Bm 3	20" x 10" x 1/2"	30'-11"	BB	DD	
Rowway West Span	20	Bm 4	20" x 10" x 1/2"	30'-11"	BB	DD	
Rowway East Span	21	Bm 5	20" x 10" x 1/2"	35'-7"	BB	DD	
Rowway West Span	22	Bm 6	20" x 10" x 1/2"	35'-7"	BB	DD	
Rowway Center Span	23	Bm 7	20" x 10" x 1/2"	35'-7"	BB	DD	
Rowway West Span	24	Bm 8	20" x 10" x 1/2"	35'-7"	BB	DD	
Rowway East Span	25	Bm 9	20" x 10" x 1/2"	35'-7"	BB	DD	
Rowway West Span	26	Bm 10	20" x 10" x 1/2"	35'-7"	BB	DD	
Rowway Center Span	27	Bm 11	20" x 10" x 1/2"	35'-7"	BB	DD	
Rowway West Span	28	Bm 12	20" x 10" x 1/2"	35'-7"	BB	DD	
Rowway East Span	29	Bm 13	20" x 10" x 1/2"	35'-7"	BB	DD	
Rowway West Span	30	Bm 14	20" x 10" x 1/2"	35'-7"	BB	DD	
Rowway Center Span	31	Bm 15	20" x 10" x 1/2"	35'-7"	BB	DD	
Rowway West Span	32	Bm 16	20" x 10" x 1/2"	35'-7"	BB	DD	
Rowway East Span	33	Bm 17	20" x 10" x 1/2"	35'-7"	BB	DD	
Rowway West Span	34	Bm 18	20" x 10" x 1/2"	35'-7"	BB	DD	
Rowway Center Span	35	Bm 19	20" x 10" x 1/2"	35'-7"	BB	DD	
Rowway West Span	36	Bm 20	20" x 10" x 1/2"	35'-7"	BB	DD	
Rowway East Span	37	Bm 21	20" x 10" x 1/2"	35'-7"	BB	DD	

BILL OF REINFORCING STEEL

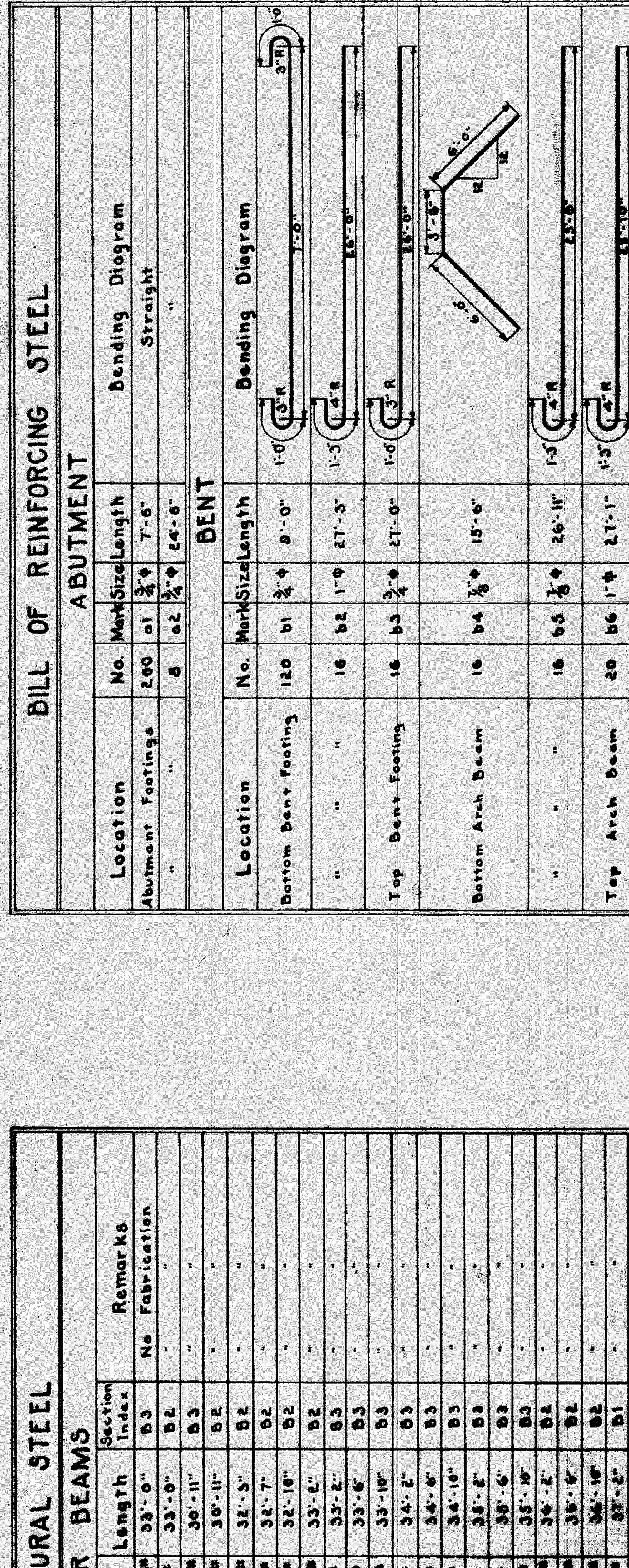
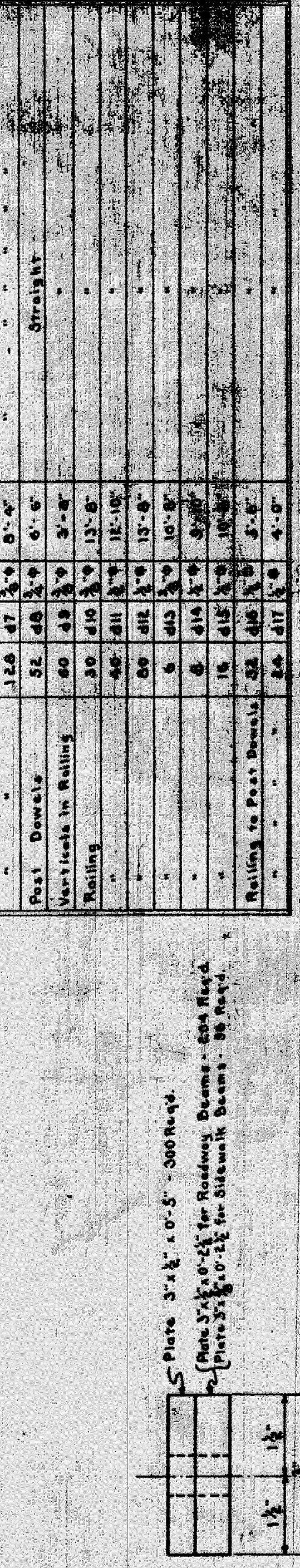
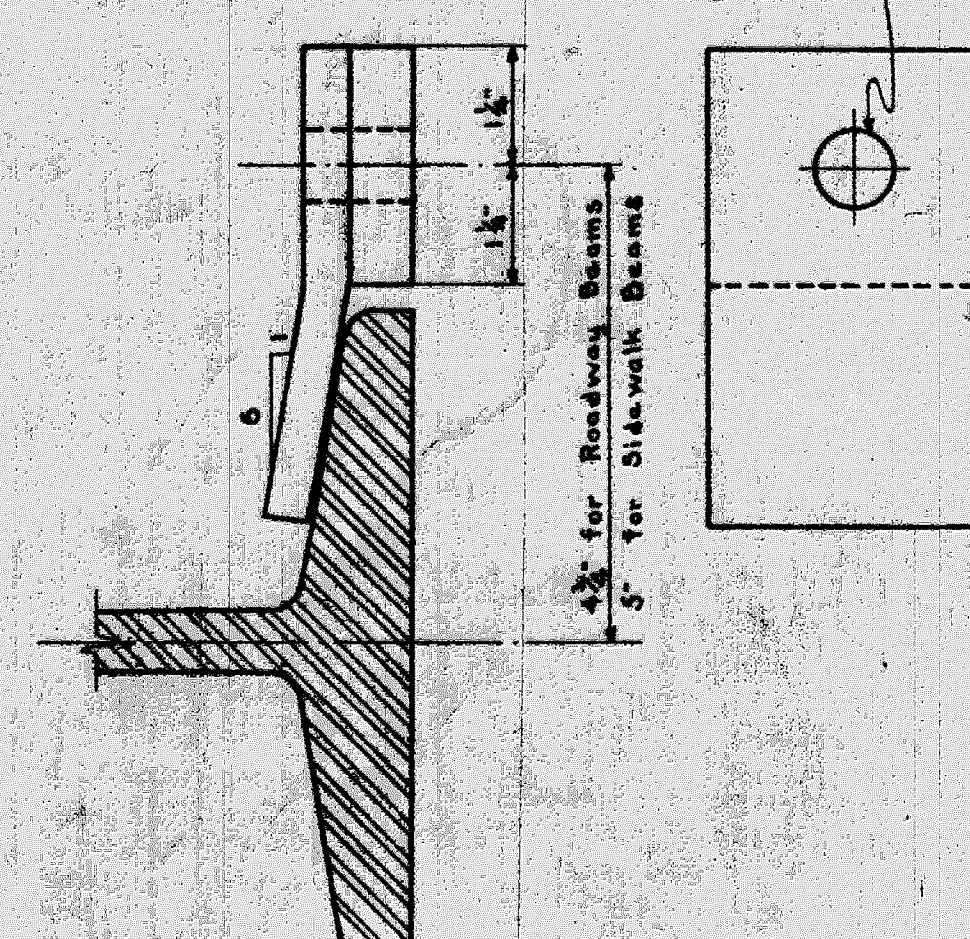
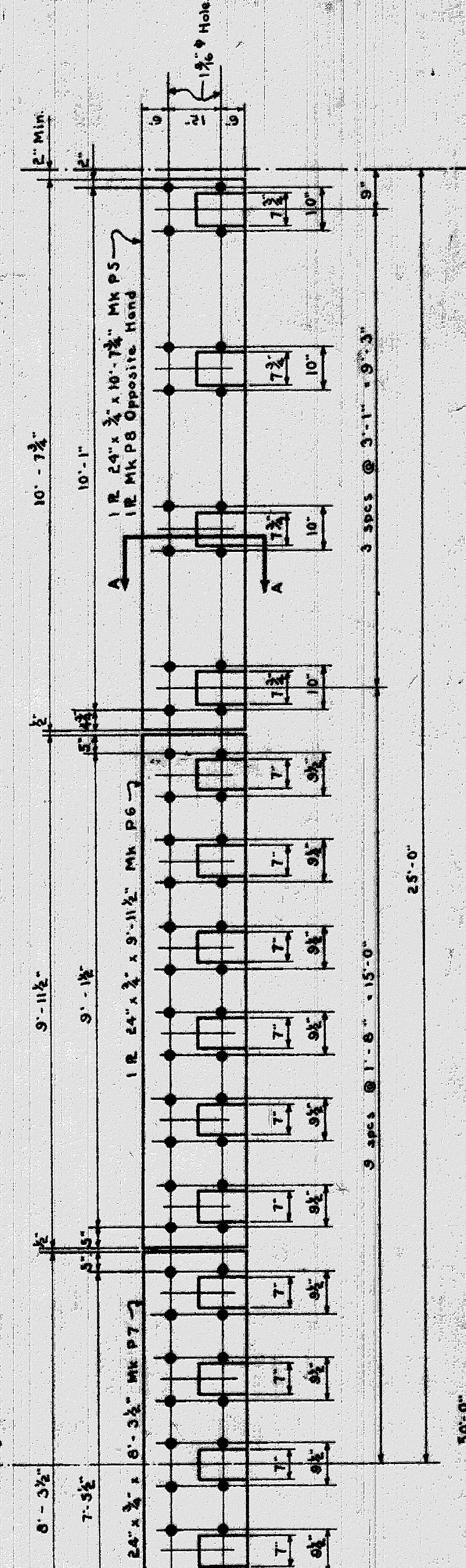
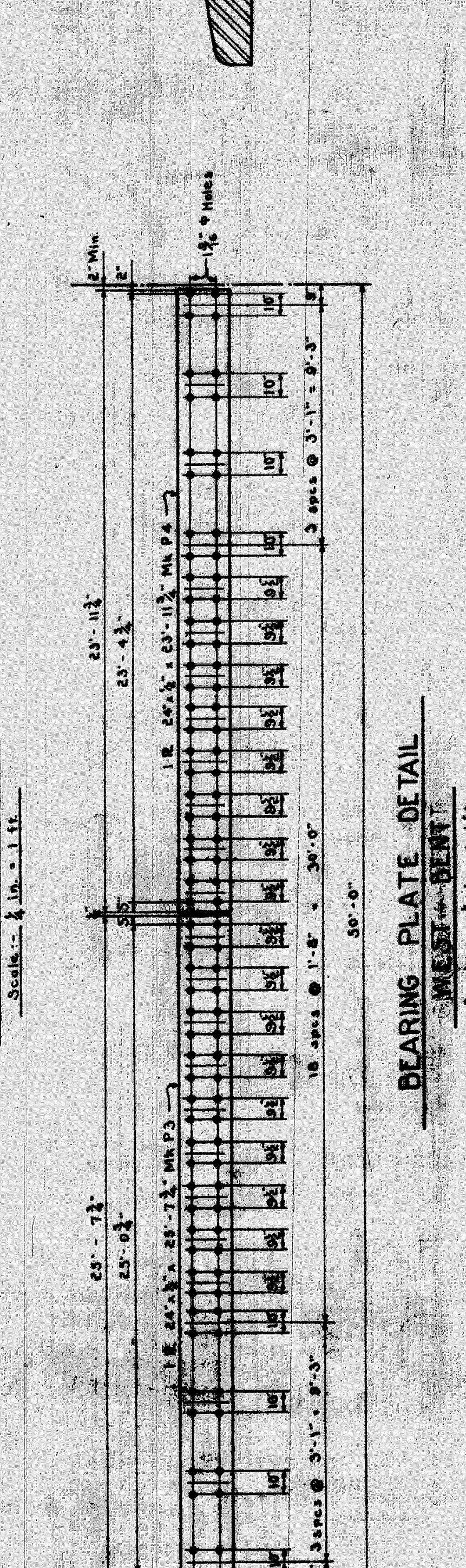
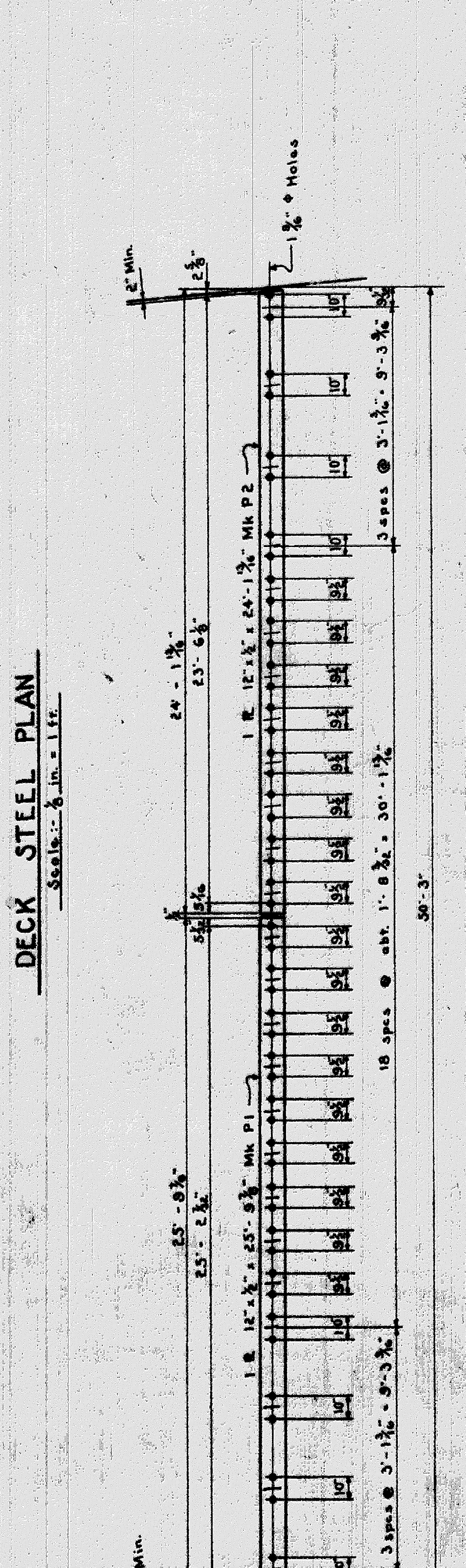
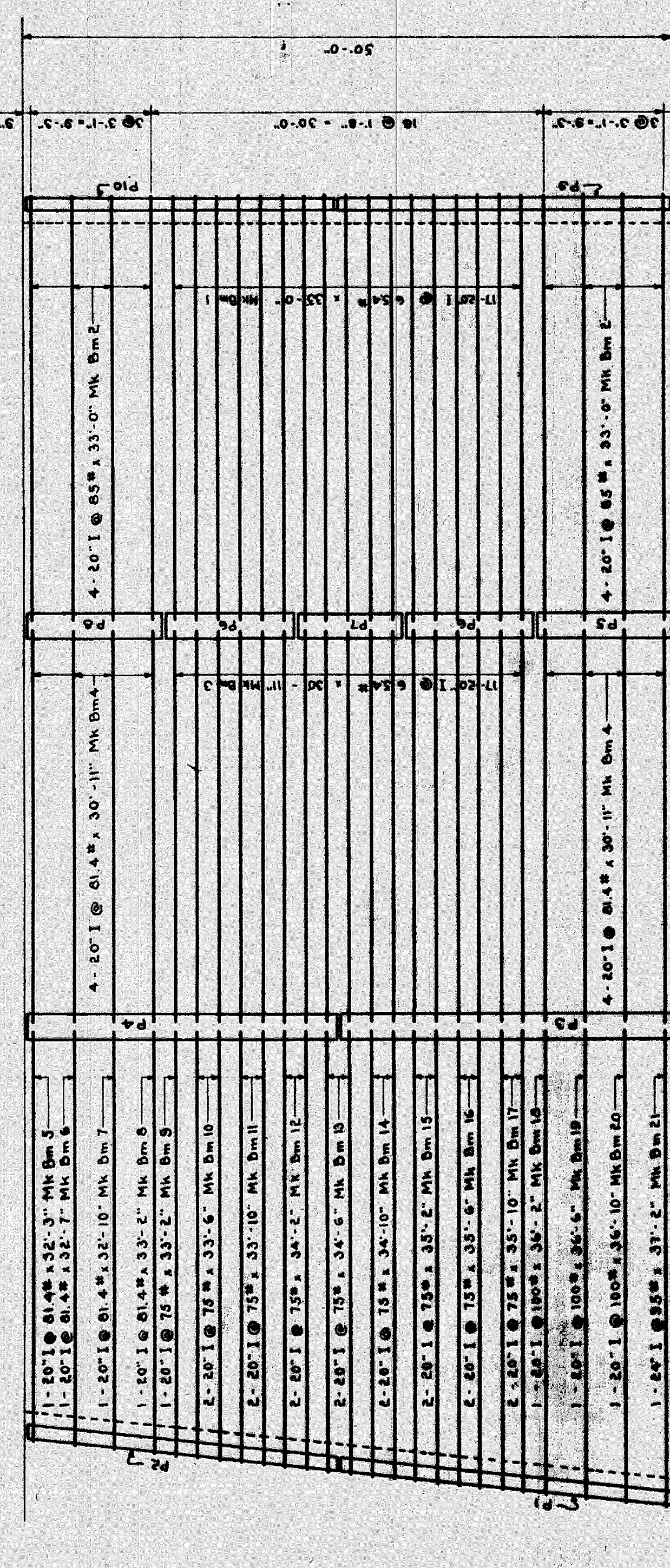
Location	No.	Mark	Size	Length	Bending Diagram
Rowway East Span	100	a1	3/4"	7'-0"	Straight
Rowway West Span	101	a2	3/4"	24'-0"	"
Rowway Center Span	102	b1	3/4"	9'-0"	"
Rowway West Span	103	b2	1/2"	27'-3"	"
Rowway East Span	104	b3	3/4"	27'-0"	"
Rowway West Span	105	b4	3/4"	18'-0"	"
Rowway Center Span	106	b5	3/4"	26'-11"	"
Rowway East Span	107	b6	1/2"	27'-11"	"
Rowway West Span	108	a1	3/4"	27'-4"	"
Rowway Center Span	109	a2	3/4"	26'-8"	"
Rowway East Span	110	a1	3/4"	23'-0"	"
Rowway West Span	111	a2	3/4"	10'-2"	"
Rowway Center Span	112	a3	3/4"	7'-10"	"

MISCELLANEOUS STEEL

Item	No.	Size	Length	Description
Anchor Bolts	300	1/2"	1'-0"	Anchor Bolts with Nuts and Washers
Clips	300	1/2"	1'-0"	Clips

BILL OF WIRE MESH

Location	Lin. Ft.	Width	Description
Bottom of Deck	800	4'-0"	A. S. & W. Co. 1-1/2" Gage 4 in. Wire Mesh
Slab Deck	780	4'-0"	A. S. & W. Co. 1-1/2" Gage 4 in. Wire Mesh
Deck Protection	200	4'-0"	A. S. & W. Co. 1-1/2" Gage 4 in. Wire Mesh
Slab Deck	160	3'-0"	A. S. & W. Co. 1-1/2" Gage 4 in. Wire Mesh
Protective Coat	1800	4'-0"	A. S. & W. Co. 1-1/2" Gage 4 in. Wire Mesh

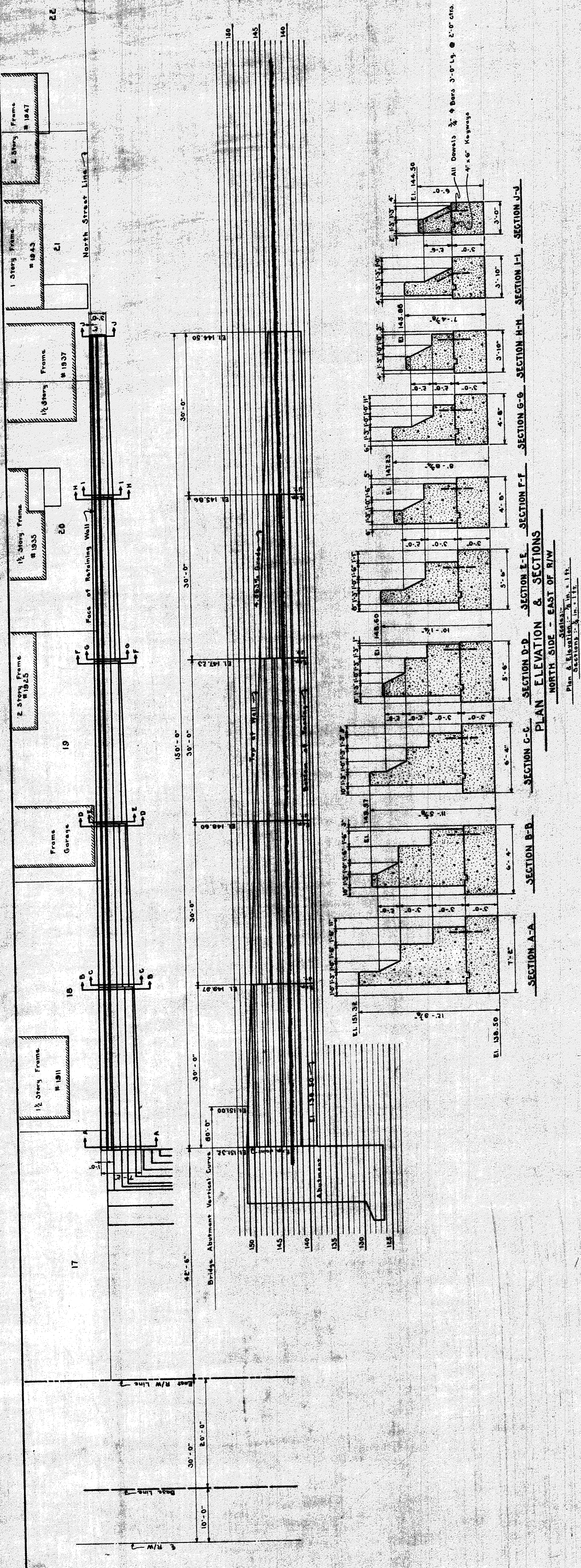


Approved: *[Signature]*
Chief Engineer D. G. H. & M. Ry.

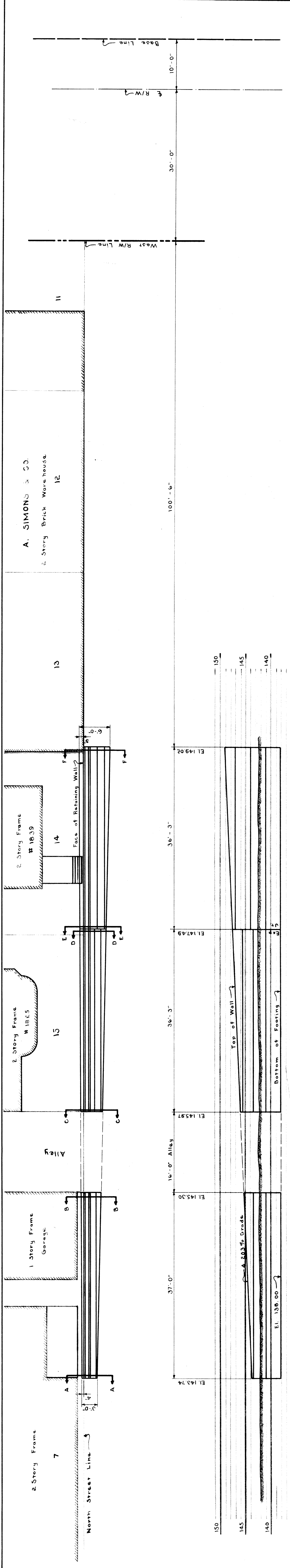
Approved: *[Signature]*
City Engineer

GRAND TRUNK RAILWAY SYSTEM
WESTERN LINES
DEQUINDRE GRADE SEPARATION
DETROIT, MICHIGAN
BRIDGE APPROVED

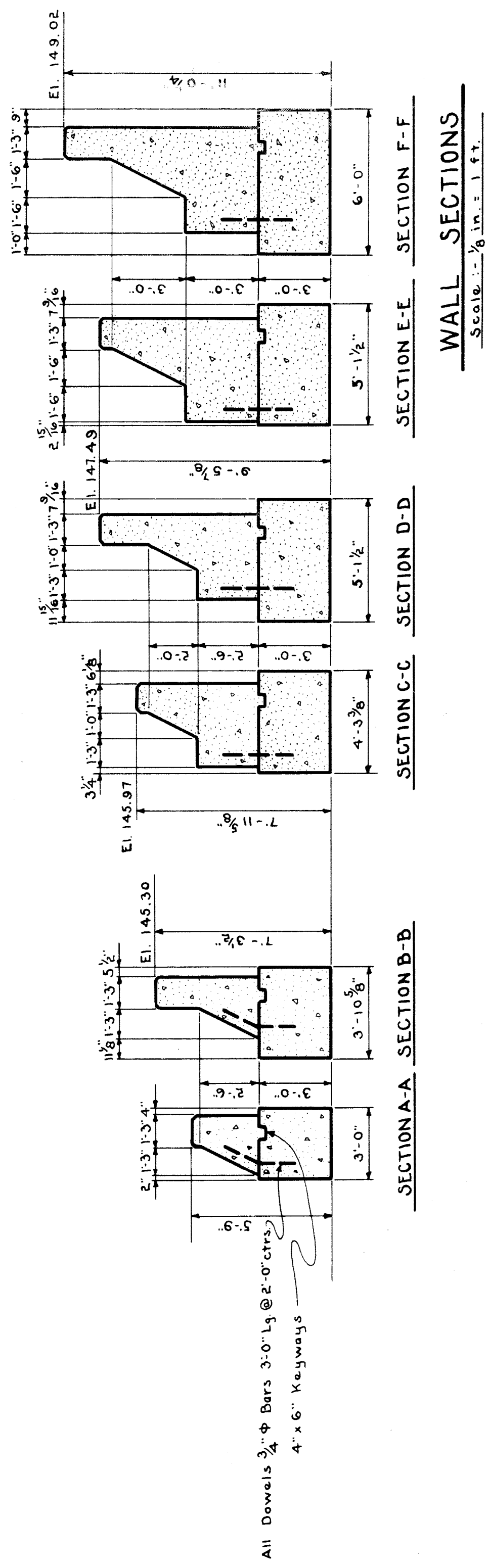
Approved: *D. G. H. & M. Ry*
 Chief Engineer D. G. H. & M. Ry
 Approved: *W. J. ...*
 City Engineer



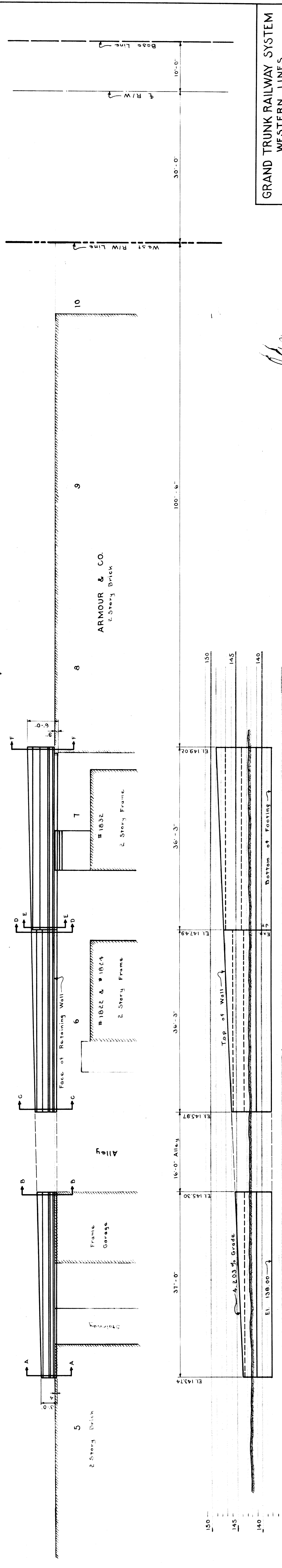
PLAN ELEVATION & SECTIONS
NORTH SIDE - EAST OF R/W
 Plan & Elevation: 1/4" = 1'-0"
 Sections: 1/4" = 1'-0"



PLAN & ELEVATION
NORTH SIDE - WEST OF R/W
Scale: 1/8" = 1 ft.



WALL SECTIONS
Scale: 1/8" = 1 ft.



PLAN & ELEVATION
SOUTH SIDE - WEST OF R/W
Scale: 1/8" = 1 ft.

Approved: *[Signature]*
Chief Engineer D. G. H. & M. Ry

Approved: *[Signature]*
City Engineer

GRAND TRUNK RAILWAY SYSTEM
WESTERN LINES
DEQUINDE GRADE SEPARATION
DETROIT, MICHIGAN
RETAINING WALLS - ALFRED STREET
SCALE: AS SHOWN

DR. H.S.F. OFFICE OF CHIEF ENGINEER
DETROIT, MICHIGAN
TR. H.S.F. APRIL 12, 1929
CH.

JOURNAL NO. WF-3165
FILE

SHEET No. 2 OF 2