

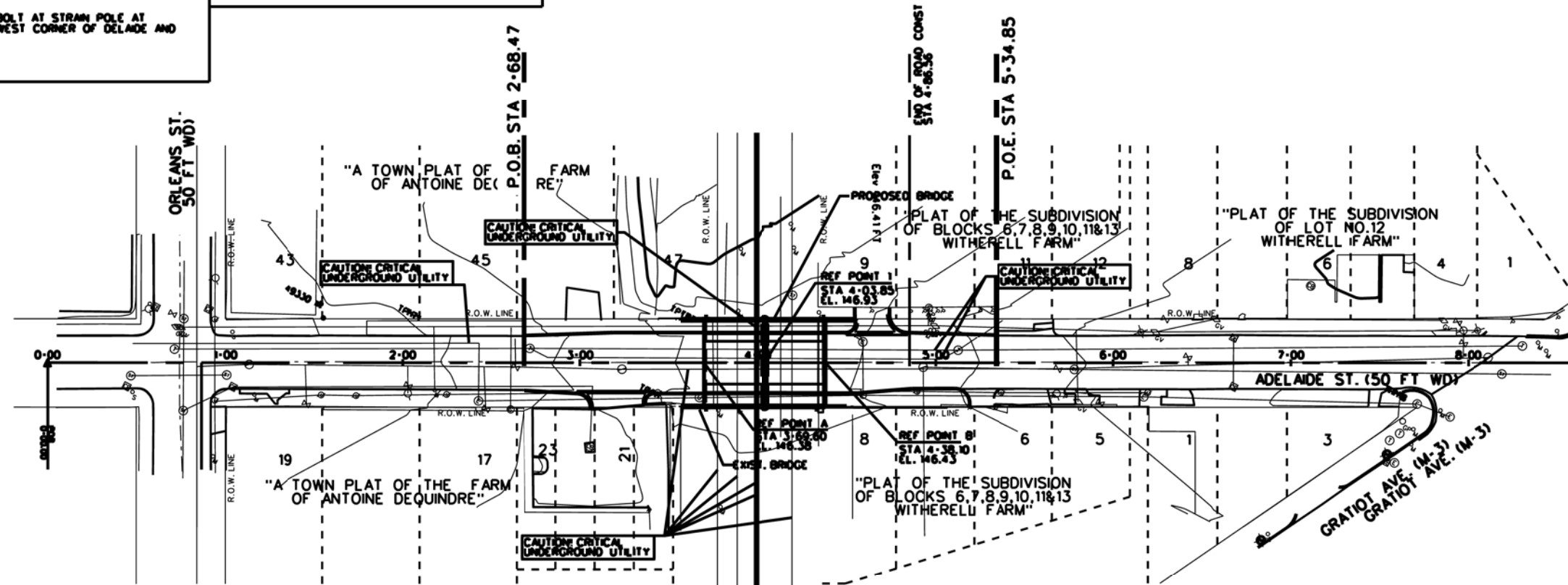
PROJECT MANAGER: - FIELD BOOK INFORMATION: - PLOTTED \$DATES \$TIMES \$BY \$USERS \$FILES

#### BENCHMARKS

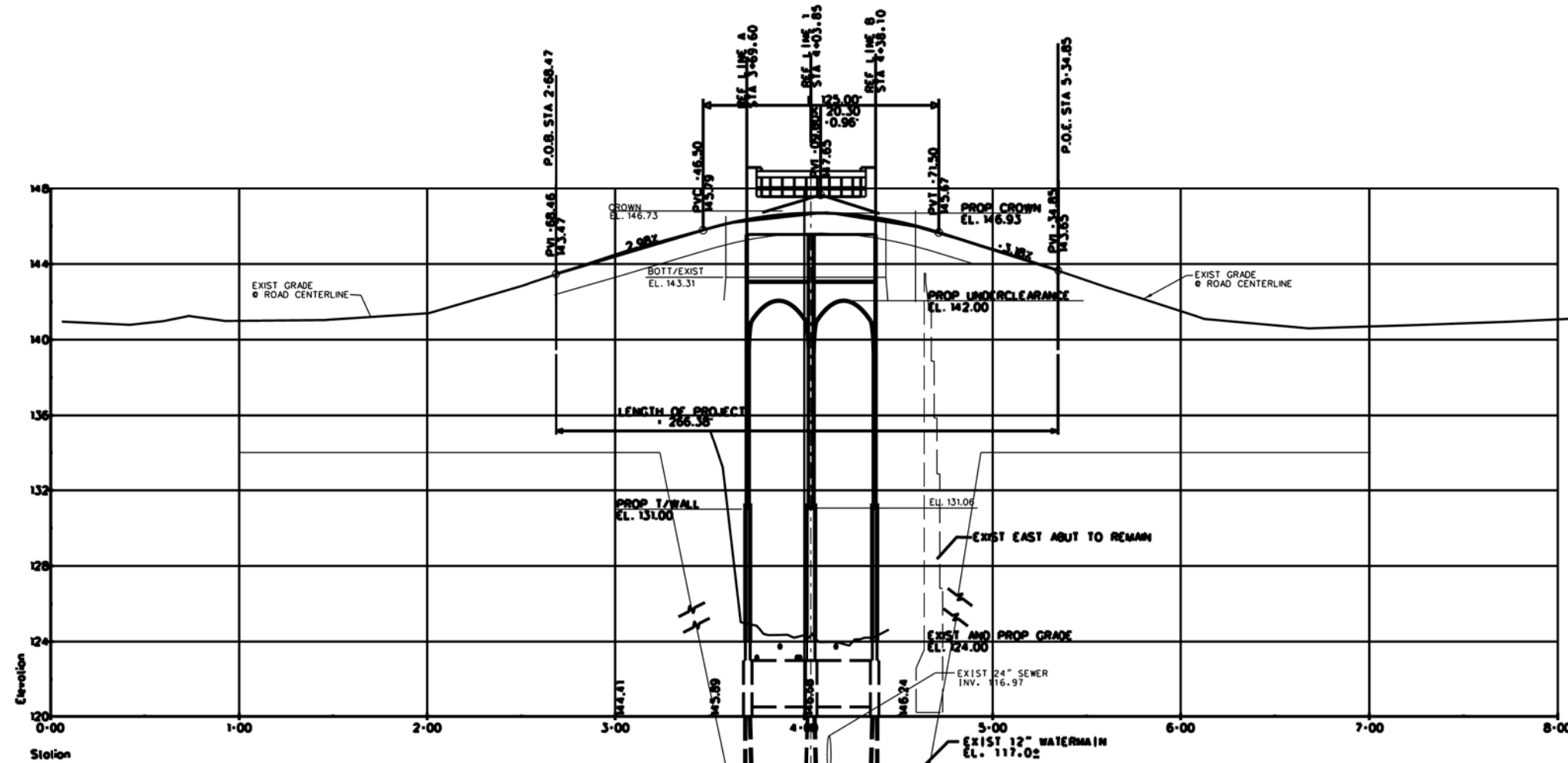
BM#8: ARROW ON HYDRANT, NORTH WEST CORNER OF ORLEANS AND ADELAIDE EL. 144.20  
BM#9: ARROW ON HYDRANT SOUTH SIDE OF ADELAIDE, FIRST HYDRANT EAST OF BRIDGE EL. 145.22  
BM#10: NORTH BOLT AT STRAIN POLE AT SOUTH WEST CORNER OF ADELAIDE AND GRATIOT EL. 146.83

#### EXISTING STRUCTURE

EXISTING BRIDGE IS A 3-SPAN, CONCRETE ENCASED STEEL BEAM WITH CONCRETE DECK, CINDER FILL AND CONCRETE SURFACE AND HMA OVERLAY. THERE ARE CONCRETE PIERS AND ABUTMENTS ON SPREAD FOOTINGS. THE ORIGINAL BRIDGE WAS CONSTRUCTED APPROXIMATELY 1930.



SITE PLAN  
SCALE: 1"=40'



PROFILE  
SCALE: VERT 1"=4'  
HORIZ 1"=40'

#### NOTES

THE WORK COVERED BY THESE PLANS INCLUDES REMOVAL OF EXISTING BRIDGE, MAINTAINING TRAFFIC, CONSTRUCTION OF THE PROPOSED BRIDGE AND APPROACHES TO THE LIMITS SHOWN.

THE CONTRACTOR SHALL LOCATE ALL ACTIVE UNDERGROUND UTILITIES PRIOR TO STARTING WORK AND SHALL CONDUCT HIS OPERATIONS IN SUCH A MANNER AS TO ENSURE THAT THOSE UTILITIES NOT REQUIRING RELOCATION WILL NOT BE DISTURBED.

ADELAIDE TRAFFIC IS TO BE DETOURED OVER OTHER EXISTING ROADS.

PLAN ELEVATIONS REFER TO CITY OF DETROIT DATUM.

DTE ELECTRIC AND GAS AND ALL CONDUITS SHALL BE RELOCATED BY OTHERS. CONTRACTOR SHALL COORDINATE HIS WORK WITH THEIR ACTIVITIES.

REV#	DATE	DESCRIPTION
REV#1	10/28/13	FOUNDATION REVISION

NOT VALID FOR CONSTRUCTION  
UNLESS SIGNED AND DATED:

**WadeTrim**  
300 Commercial, Suite 2500  
Detroit, MI 48226  
313.961.3650  
FAX: 313.961.0998  
www.wadetrtrim.com

**CITY OF DETROIT  
DEPARTMENT OF PUBLIC WORKS  
CITY ENGINEERING DIVISION  
ADELAIDE ST. OVER DEQUINDRE CUT S.N. 12446  
PLAN OF SITE**

ISSUED FOR: DATE: BY:

JOB NO.  
**DTE 2025-09T**

SHEET  
8  
(415)

© Wade Trim Group, Inc. ADELAIDE STREET BRIDGE