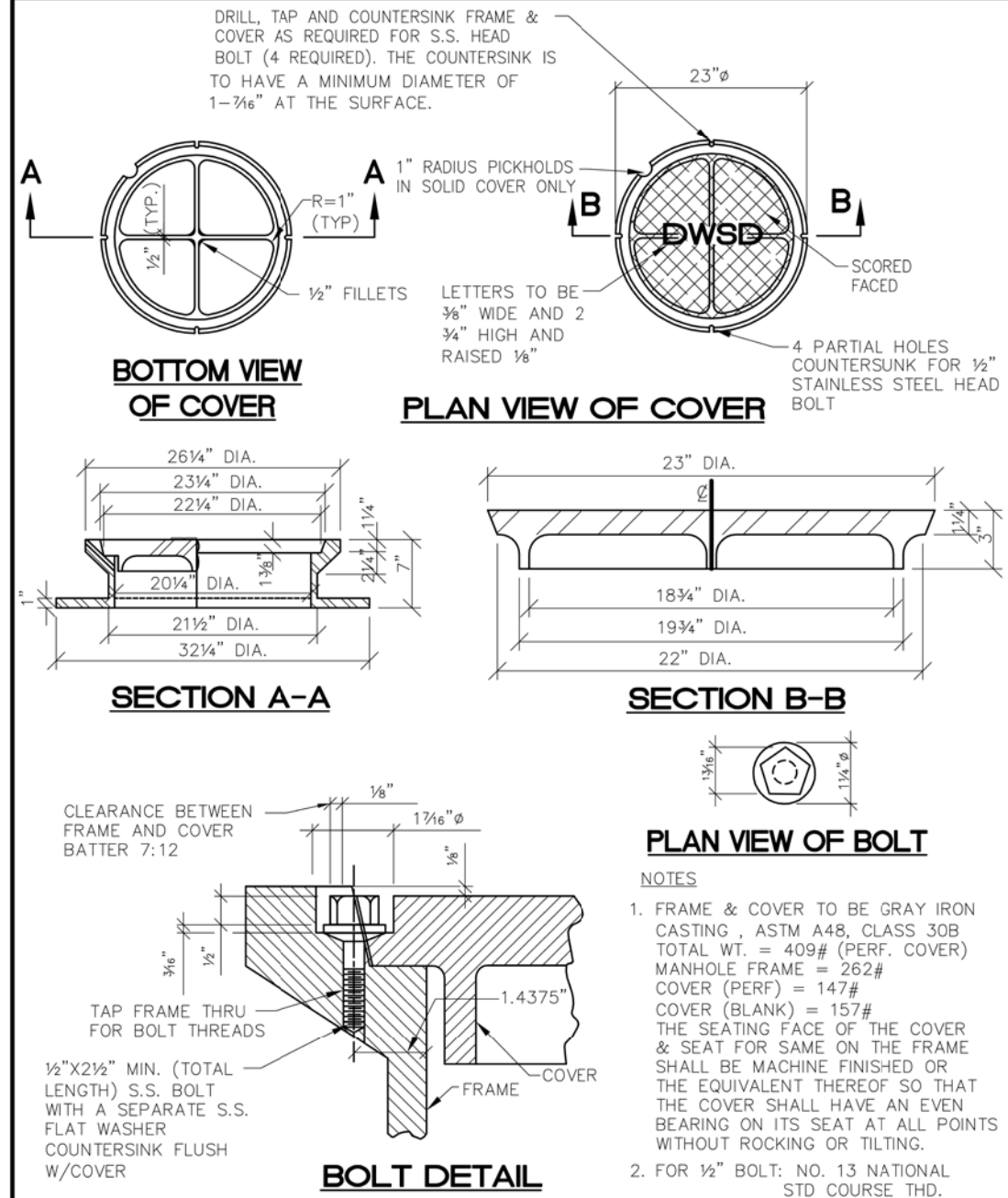


NOTES

THE ENDS OF THE CASING SHALL BE SUITABLY PROTECTED AGAINST THE ENTRANCE OF FOREIGN MATERIAL, BUT SHALL NOT BE TIGHTLY SEALED.

C						<p align="center">CASING PIPE SECTION FOR WATERMAIN</p>	<p align="center">CITY OF DETROIT WATER AND SEWERAGE DEPARTMENT ENGINEERING DIVISION</p>
B							
A							
	DESCRIPTION	DWN	CRD	APP	DATE		
<p align="center">REVISIONS</p>							
<p>DRAWN BY: S.D.A.</p>							<p align="center">1 OF 1</p>
<p>CHECKED BY: S.D.A.</p>							
<p>APPROVED:</p>							
<p>SCALE: NONE</p>							<p align="right">02620-05</p>



C						<p align="center">MANHOLE, COVER WITH FRAME</p>	CITY OF DETROIT
B							WATER AND SEWERAGE
A							DEPARTMENT
							ENGINEERING
	DESCRIPTION	DRW	CKD	APP	DATE		DIVISION
REVISIONS							
DRAWN BY: S.D.A.							SHEET 1 OF 1
CHECKED BY: S.D.A.							
APPROVED:						SCALE: NONE	02600-07
						DWG No.	

NOTES:

WORK THIS SHEET WITH SHEET 29.

THRUST BLOCKS ARE INCLUDED IN THE PAY ITEM "WATER MAIN, DI. 12 INCH. TR DET C".

THE 4"-90° BEND, 4" RISER PIPE AND BLOW OFF CAP SHALL BE INCLUDED IN THE PAY ITEM "GATE VALVE AND BOX, 4 INCH".

[illegible]

NOT VALID FOR CONSTRUCTION
UNLESS SIGNED AND DATED:

WadeTrim

500 Griswold, Suite 2500
Detroit, MI 48226
313.961.3650
FAX: 313.961.0898
www.walshfirm.com

**CITY OF DETROIT
DEPARTMENT OF PUBLIC WORKS
CITY ENGINEERING DIVISION**
ADELAIDE ST. OVER DEQUINDRE CUT S.N. 12446
DWSD STANDARD DETAILS - 3

ISSUED FOR: DATE: BY:

JOB NO.
DTE 2025-09T

SHEET

33
(440)

ADELAIDE STREET

Wood Trim Group, Inc.

© Wode Trim Group, Inc. **ADELAIDE STREET BRIDGE**