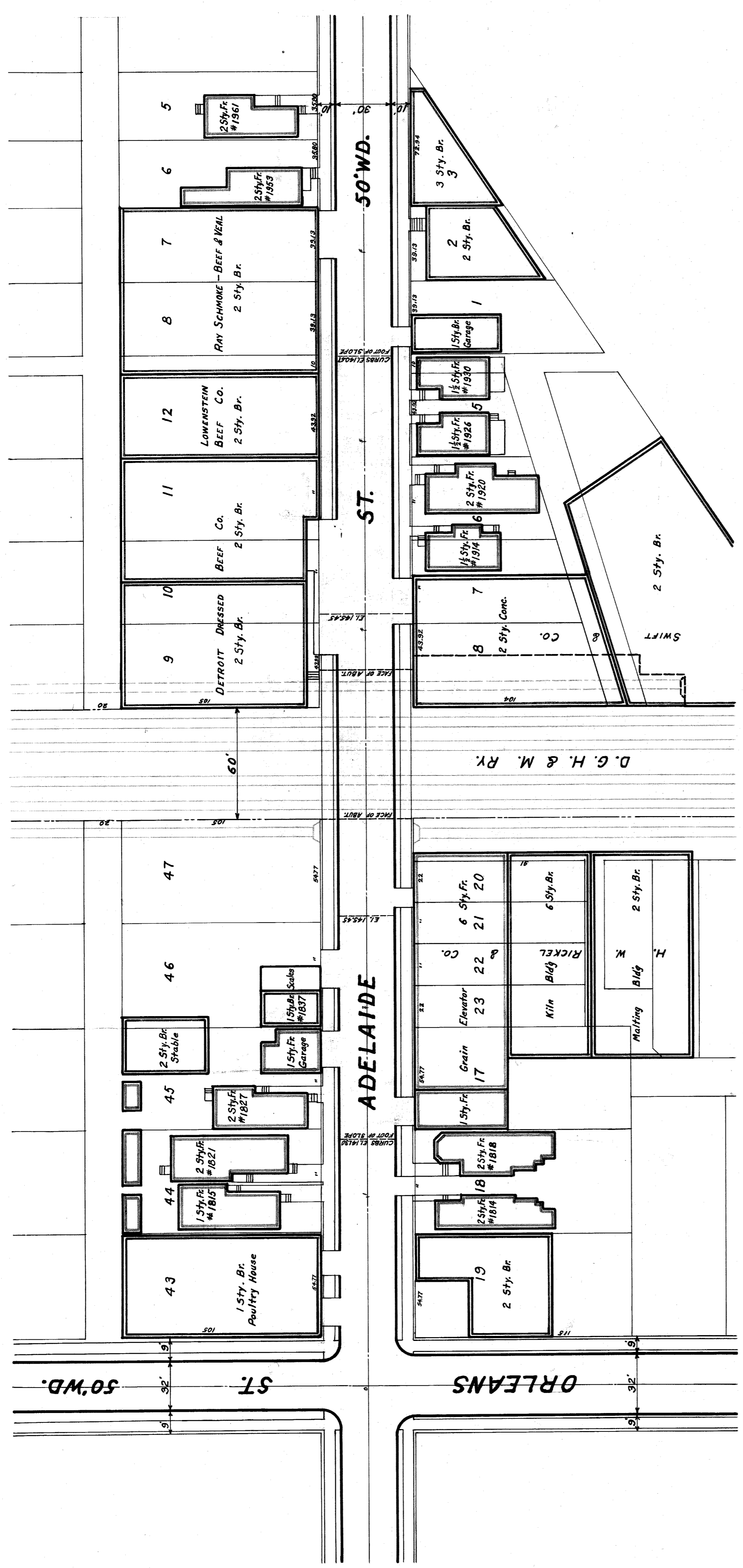
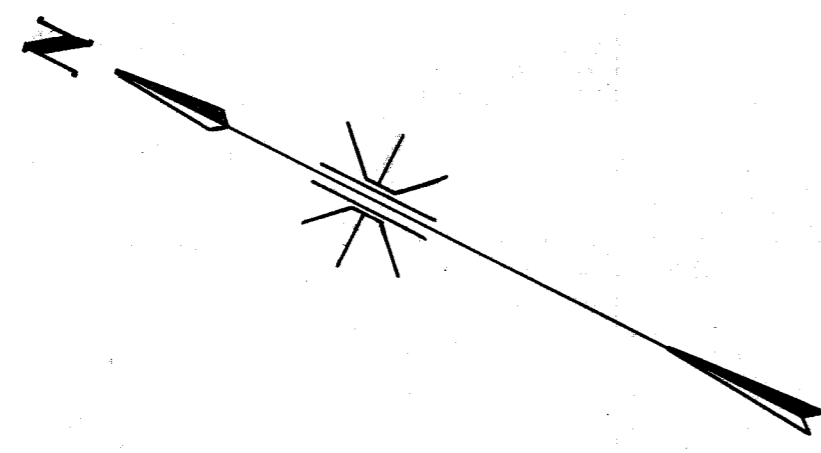
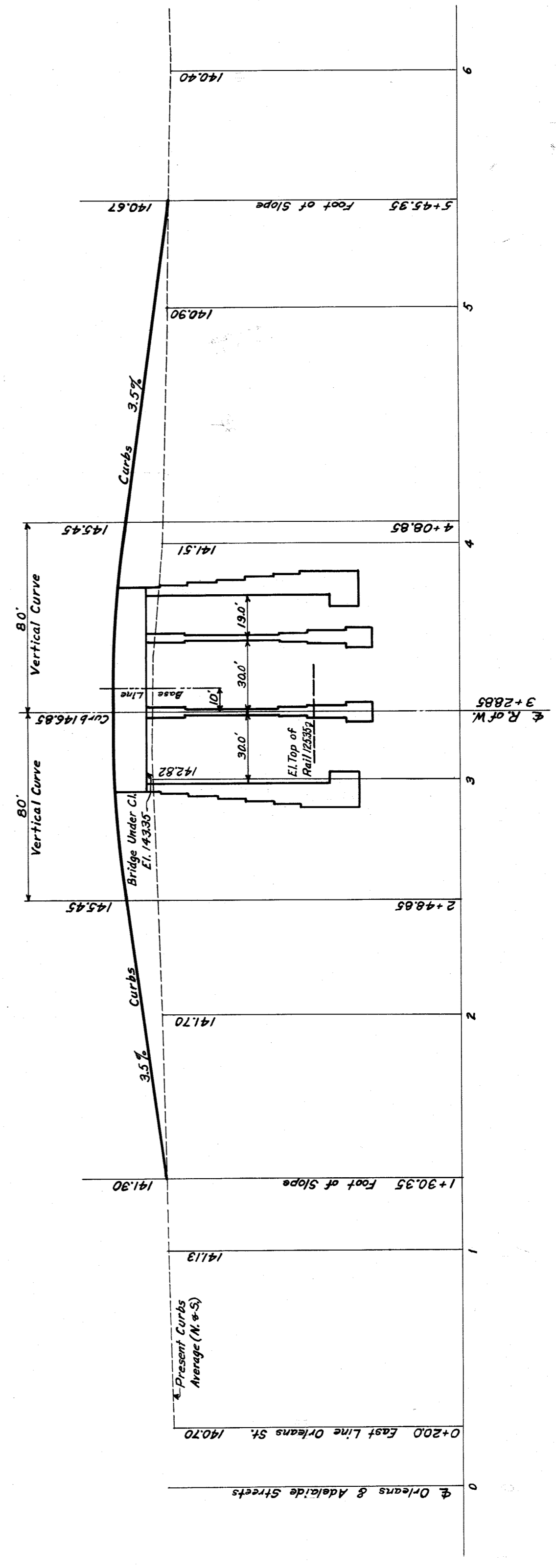
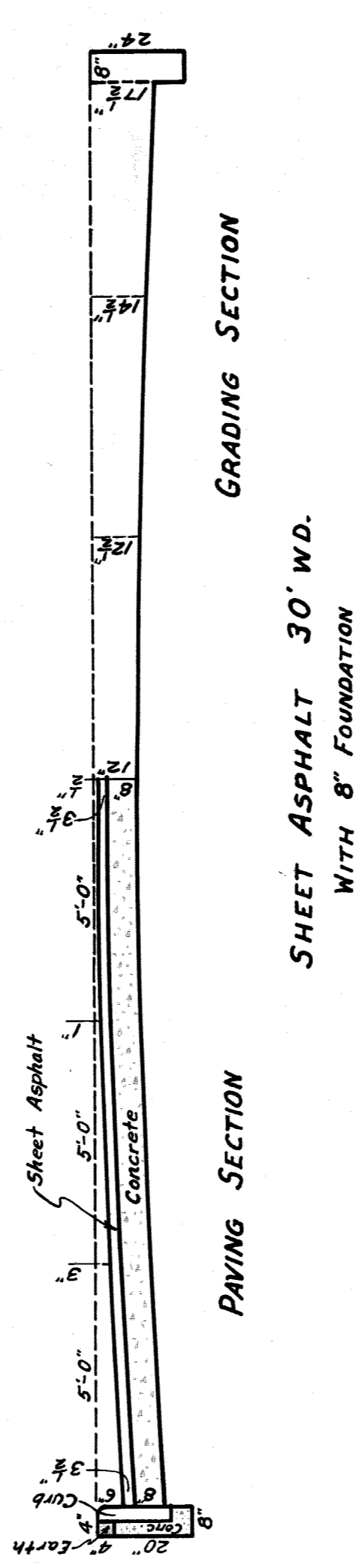


Pub. Est. 116
 1/10

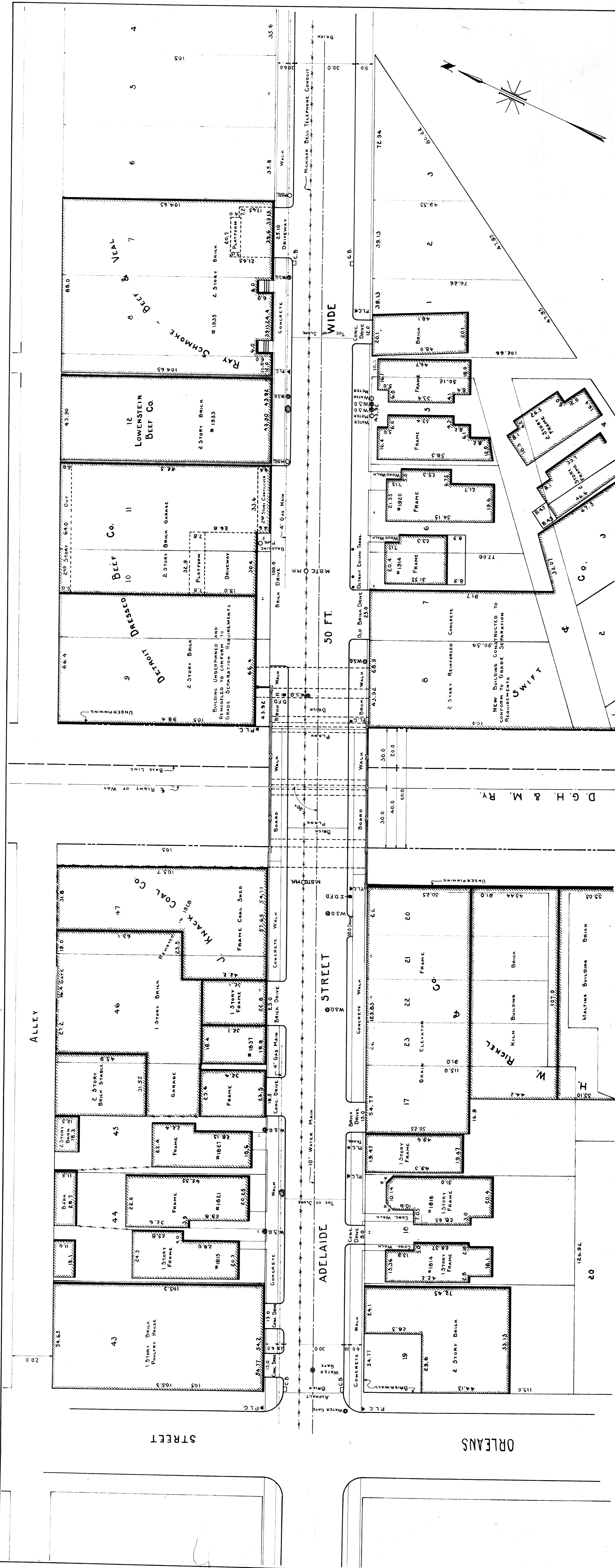


PLAN

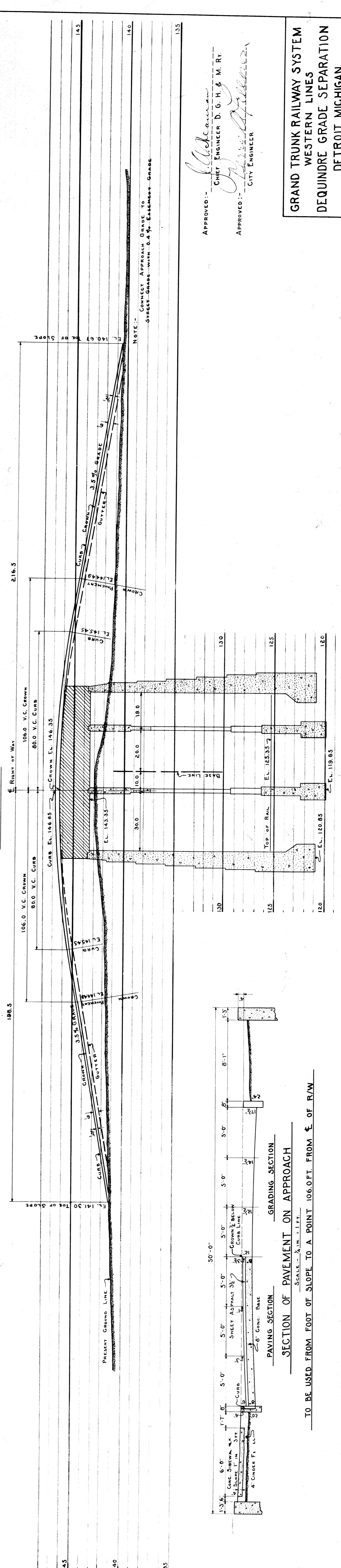


PROFILE

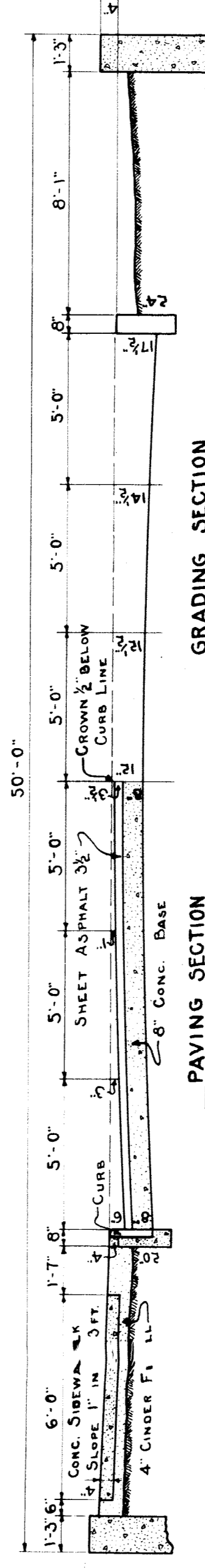
APPROVED *[Signature]*
 CHIEF ENGINEER G.T.R.Y. SYSTEM WESTERN LINES
CITY OF DETROIT
 DEPARTMENT OF PUBLIC WORKS
 CITY ENGINEERS OFFICE
 DEPARTMENT OF GRADE SEPARATION & BRIDGES
 DEQUINDRE ST. GRADE SEPARATION
ADELAIDE ST.
 Made by J.T.C. March 1929
 Checked by R.D. Plan Scale 1"=40'
 Vertical Scale 1"=10'
 Books 332 & 379
 File X0837



GENERAL PLAN
SCALE: 1 IN. = 20 FT.

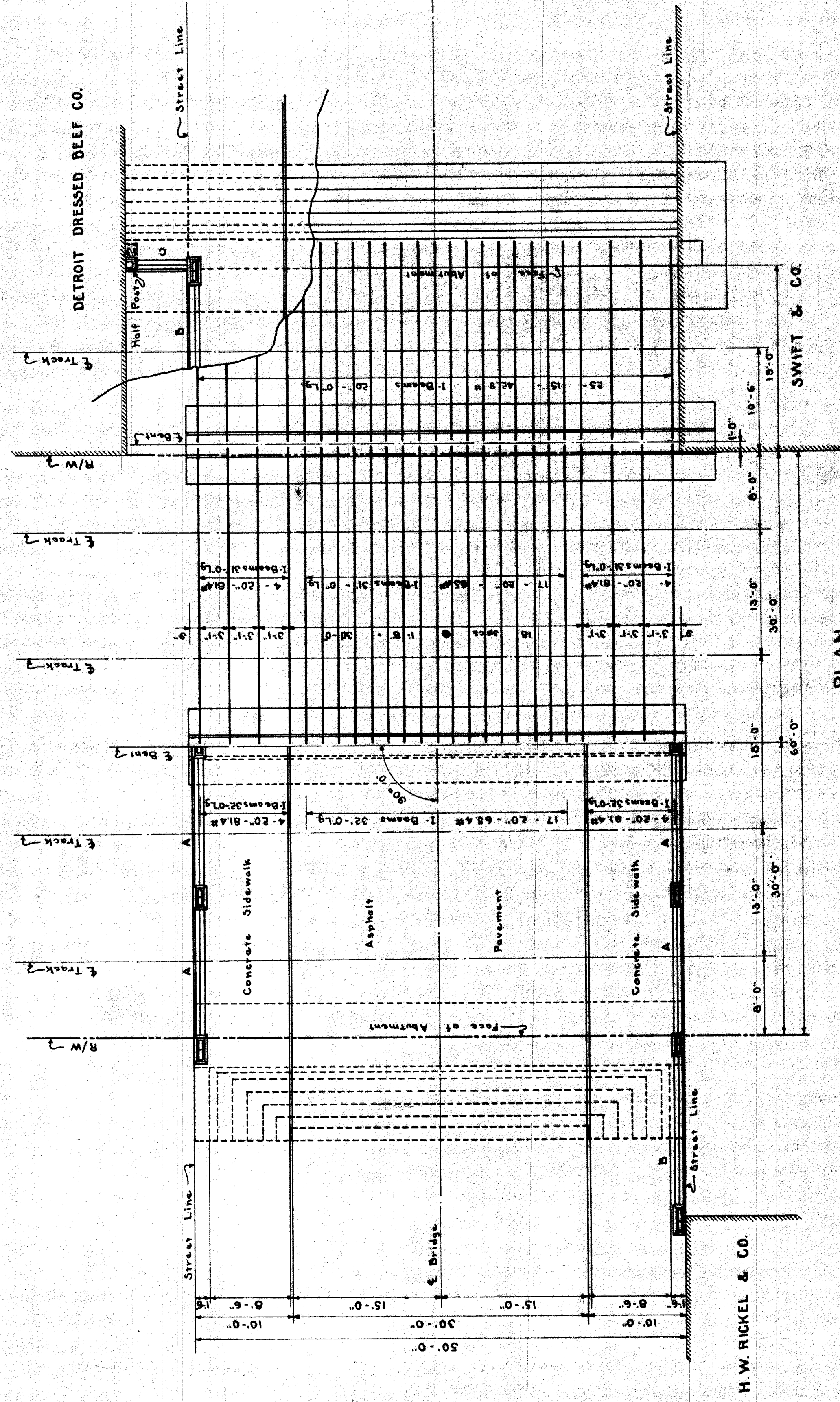


PROFILE
SCALE: VERTICAL - 1 IN. = 4 FT. HORIZONTAL - 1 IN. = 20 FT.

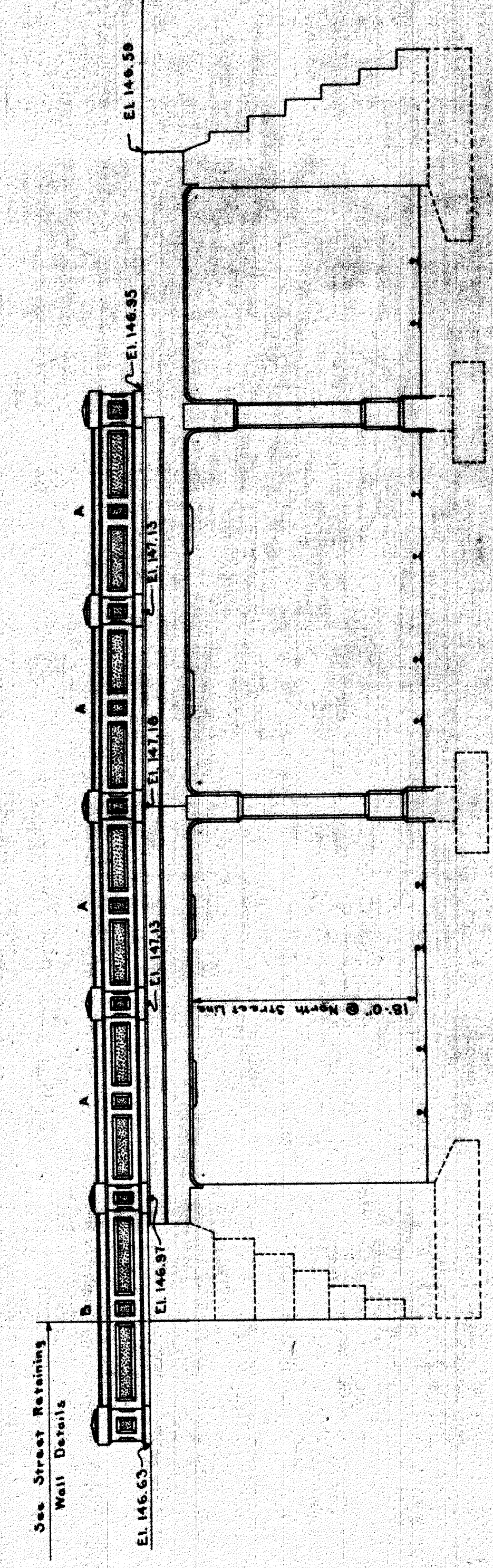


APPROVED: *[Signature]*
CHIEF ENGINEER D. G. H. & M. RT.
APPROVED: *[Signature]*
CITY ENGINEER

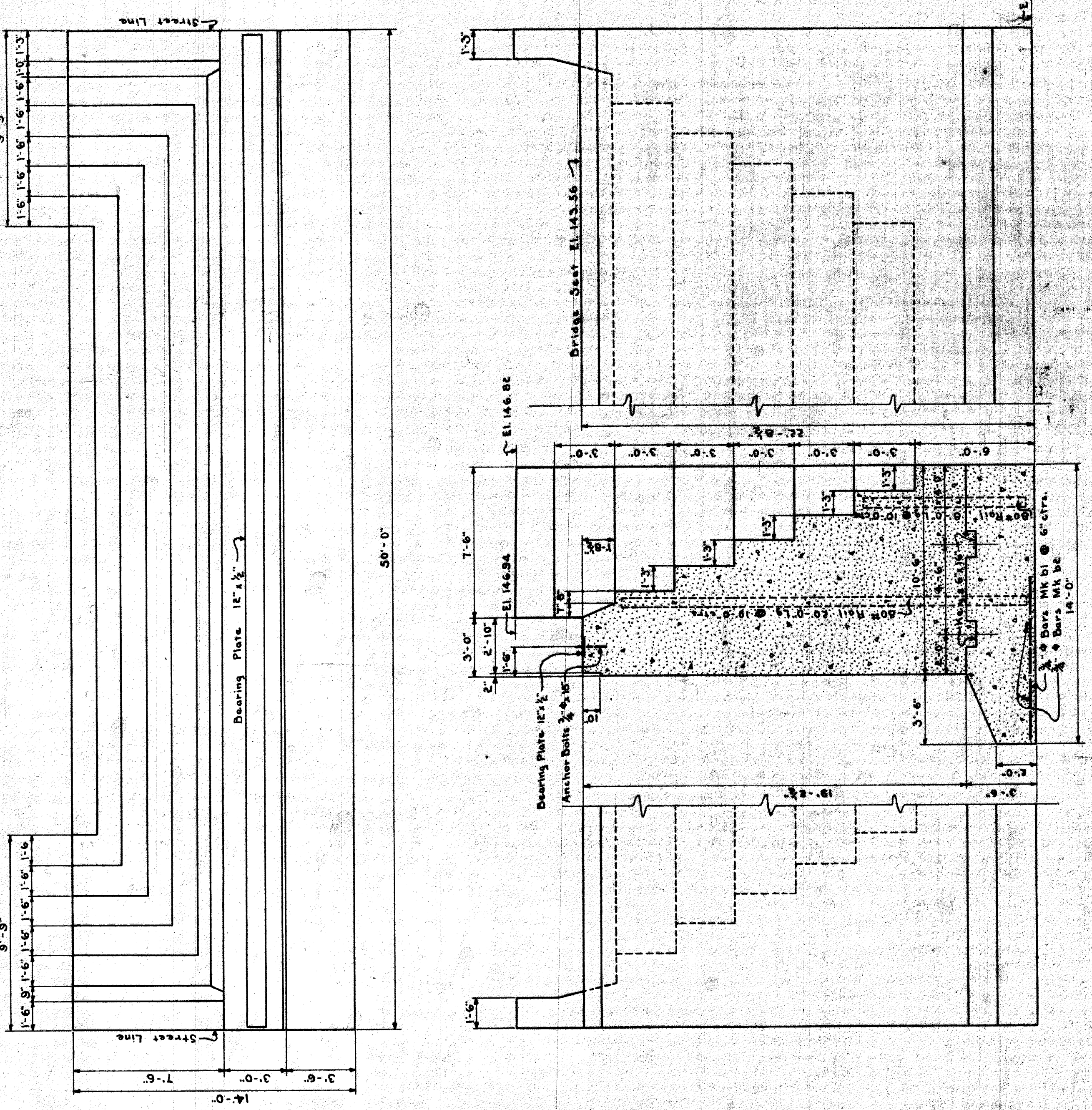
**GRAND TRUNK RAILWAY SYSTEM
WESTERN LINES
DEQUINDE GRADE SEPARATION
DETROIT, MICHIGAN
GENERAL PLAN & PROFILE-ADELAIDE STREET**
SCALE - AS SHOWN
DR. H.S.F. OFFICE OF CHIEF ENGINEER JOURNAL NO. W-3152
TR. H.S.F. DETROIT, MICHIGAN
CH. L.S. FEBRUARY 5, 1929
FILE



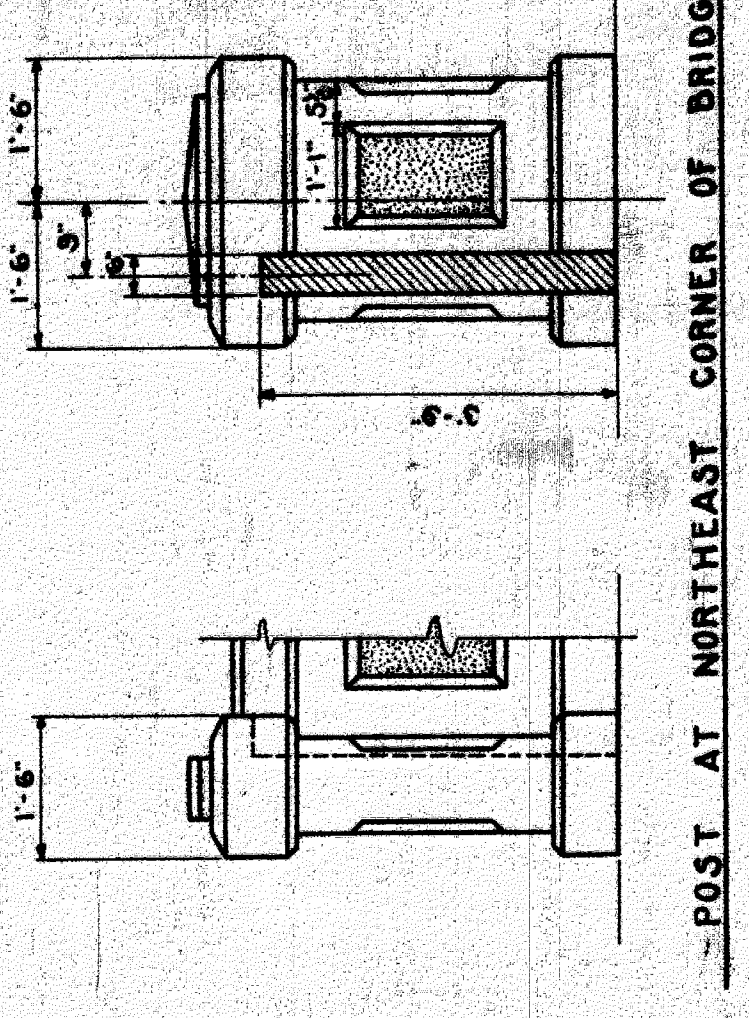
PLAN
Scale: 1/4 in. = 1 ft.



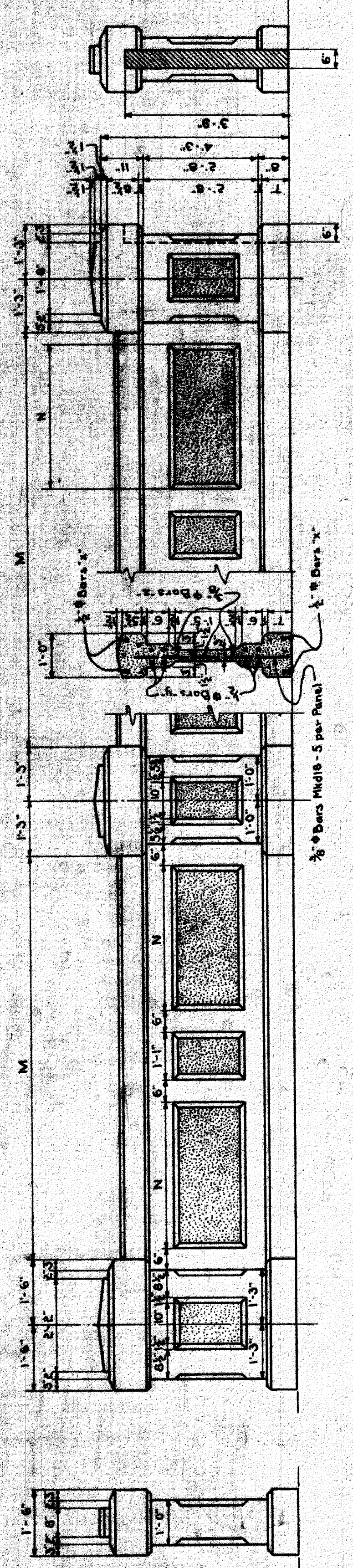
SOUTH SIDE ELEVATION
Scale: 1/4 in. = 1 ft.



DETAIL OF WEST ABUTMENT
Scale: 1/4 in. = 1 ft.



POST AT NORTHEAST CORNER OF BRIDGE



RAILING	SCHEDULE
M	13'-0" 5'-2 1/2" dia. 13'-0" dia. 13'-0" dia. 13'-0"
A	13'-0" 5'-2 1/2" dia. 13'-0" dia. 13'-0" dia. 13'-0"
B	15'-3" 4'-8" dia. 5'-11" dia. 5'-11" dia. 5'-11"
C	5'-3" 4'-8" dia. 5'-11" dia. 5'-11" dia. 5'-11"

RAILING DETAILS
Scale: 1/4 in. = 1 ft.

END POST

INTERMEDIATE POST

EXPANSION POST

NOTE: Bars do not extend into Bearing Posts. Dowels are cast into Posts and Bars welded to them. Use MK 415 for Intermediate Posts and MK 420 for End and Expansion Posts.

LONGITUDINAL SECTION
Scale: 1/4 in. = 1 ft.

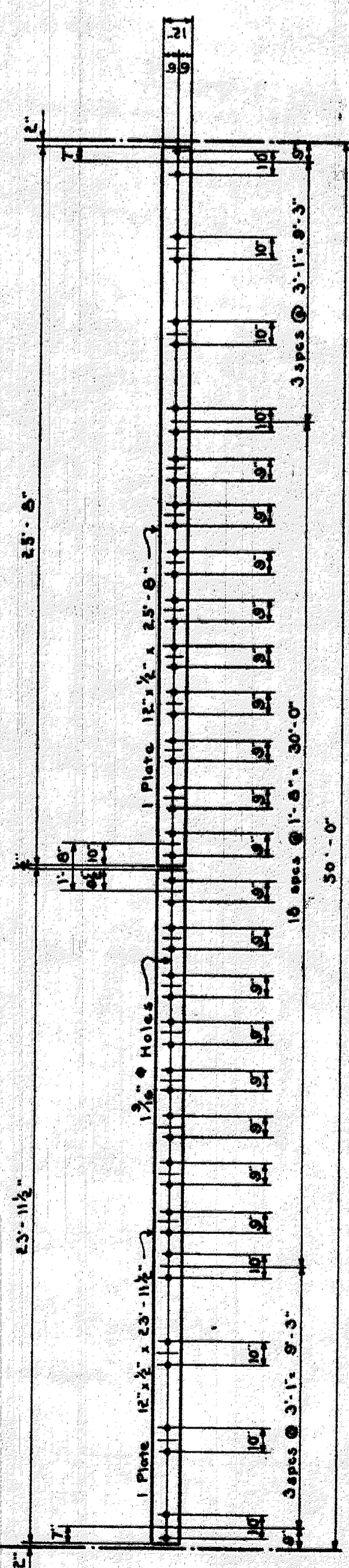
GRAND TRUNK RAILWAY SYSTEM
WESTERN LINES
DEQUINDRE GRADE SEPARATION
DETROIT, MICHIGAN
BRIDGE - ADELAIDE STREET
SCALE: AS SHOWN

Approved: *J. McManis*
Chief Engineer D. G. H. & M. Ry.
Approved: *Percey Peckers*
City Engineer

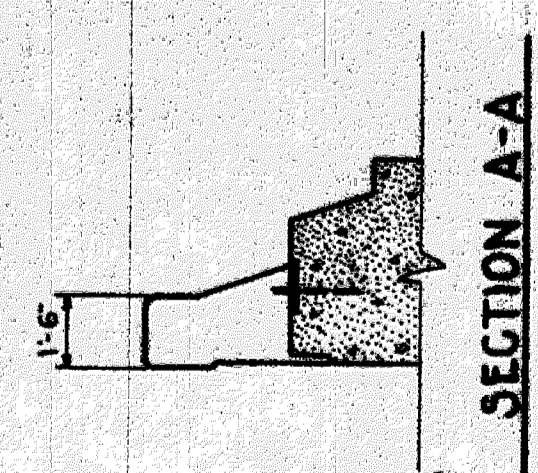
DR. H.S.F. OFFICE OF CHIEF ENGINEER
DETROIT, MICHIGAN
MARCH 11, 1928
JOURNAL No. 315
FILE
SHEET No. 1 OF 4

BILL OF REINFORCING STEEL		
Location	No. Mks/Length	Bending Diagram
Bent Footing	54 b1 3/4" @ 9'-0"	
Top Bent Footing Beam	6 b2 3/4" @ 29'-0"	
Bottom Bent Footing Beam	6 b3 1" @ 29'-0"	
Dowels Bent Column	62 b4 3/4" @ 9'-0"	
Column Pedestal Abutment	4 b5 1" @ 7'-3"	
Column Footing Abutment	100 b6 3/4" @ 8'-0"	
Column Footing Abutment	11 b7 3/4" @ 14'-0"	
Shirreps Footing Beam	16 s1 1/2" @ 25'-2"	
Dowels Abutment	2 b8 3/4" @ 5'-3"	

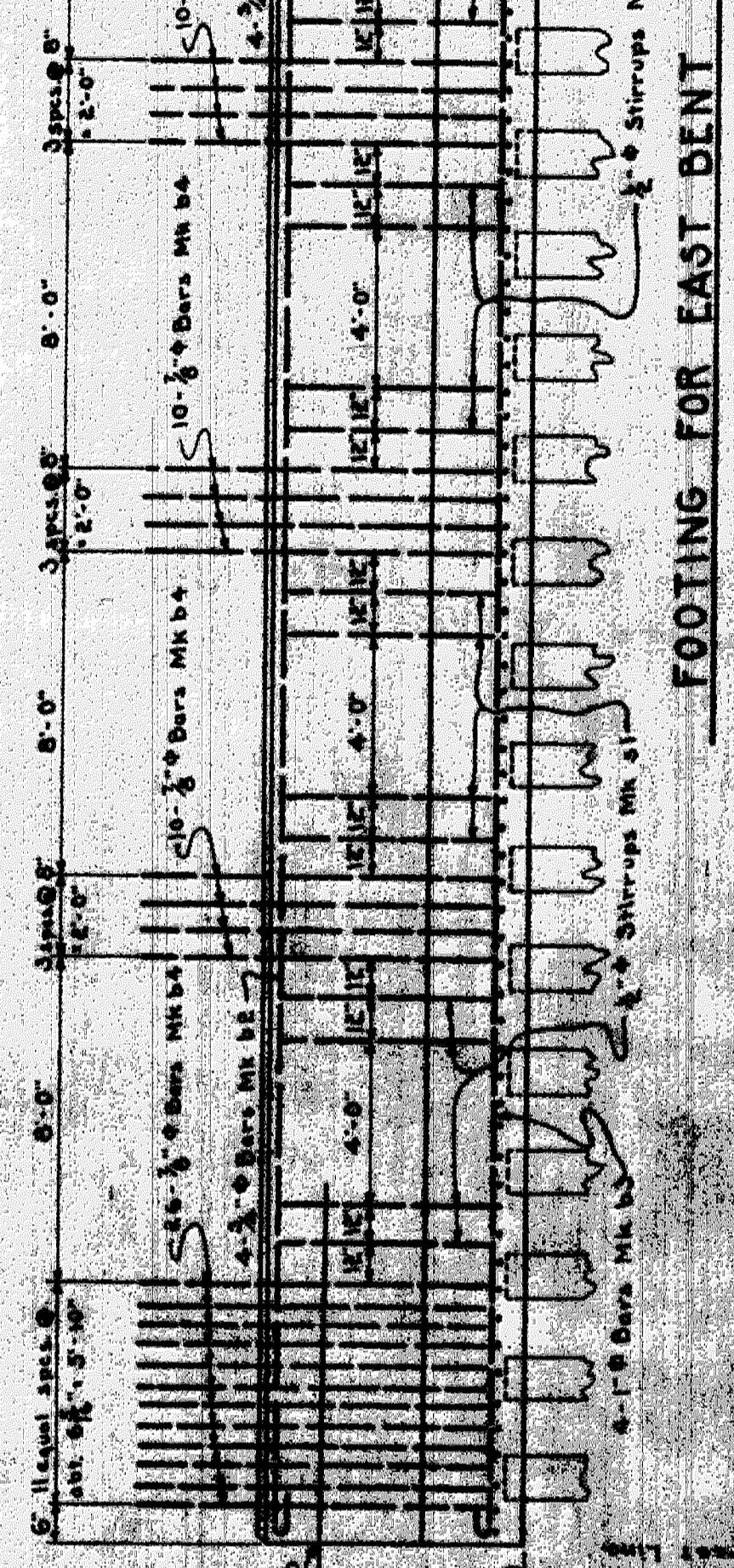
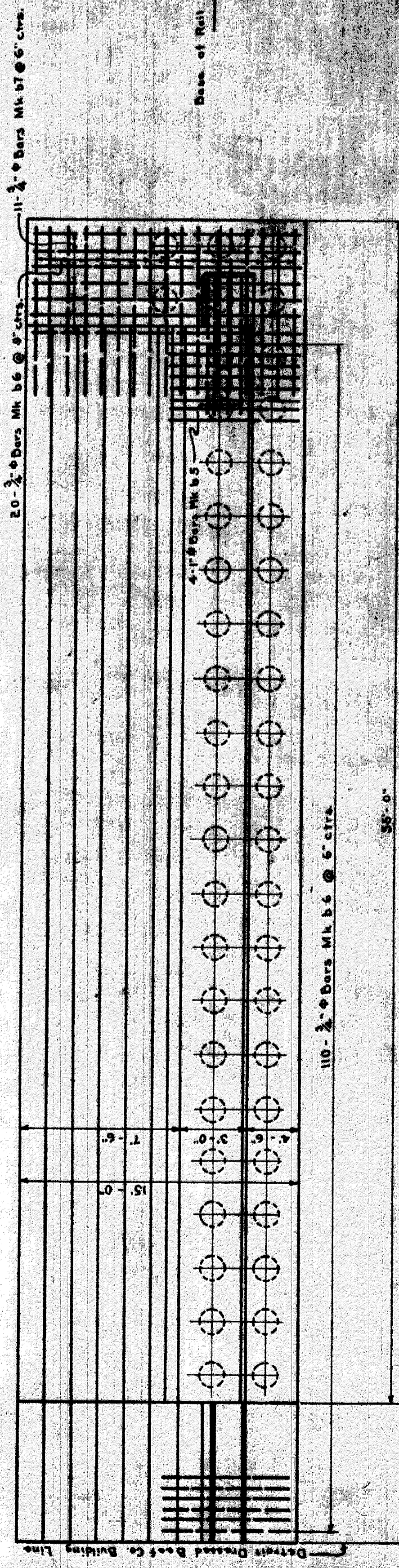
MISCELLANEOUS MATERIAL			
Item	No.	Size	Length
Bearing Plate	1	12" x 1/2"	85'-0"
Bearing Plate	1	12" x 1/2"	23'-11 1/2"
Anchor Bolts	50	3/4" @ 18"	



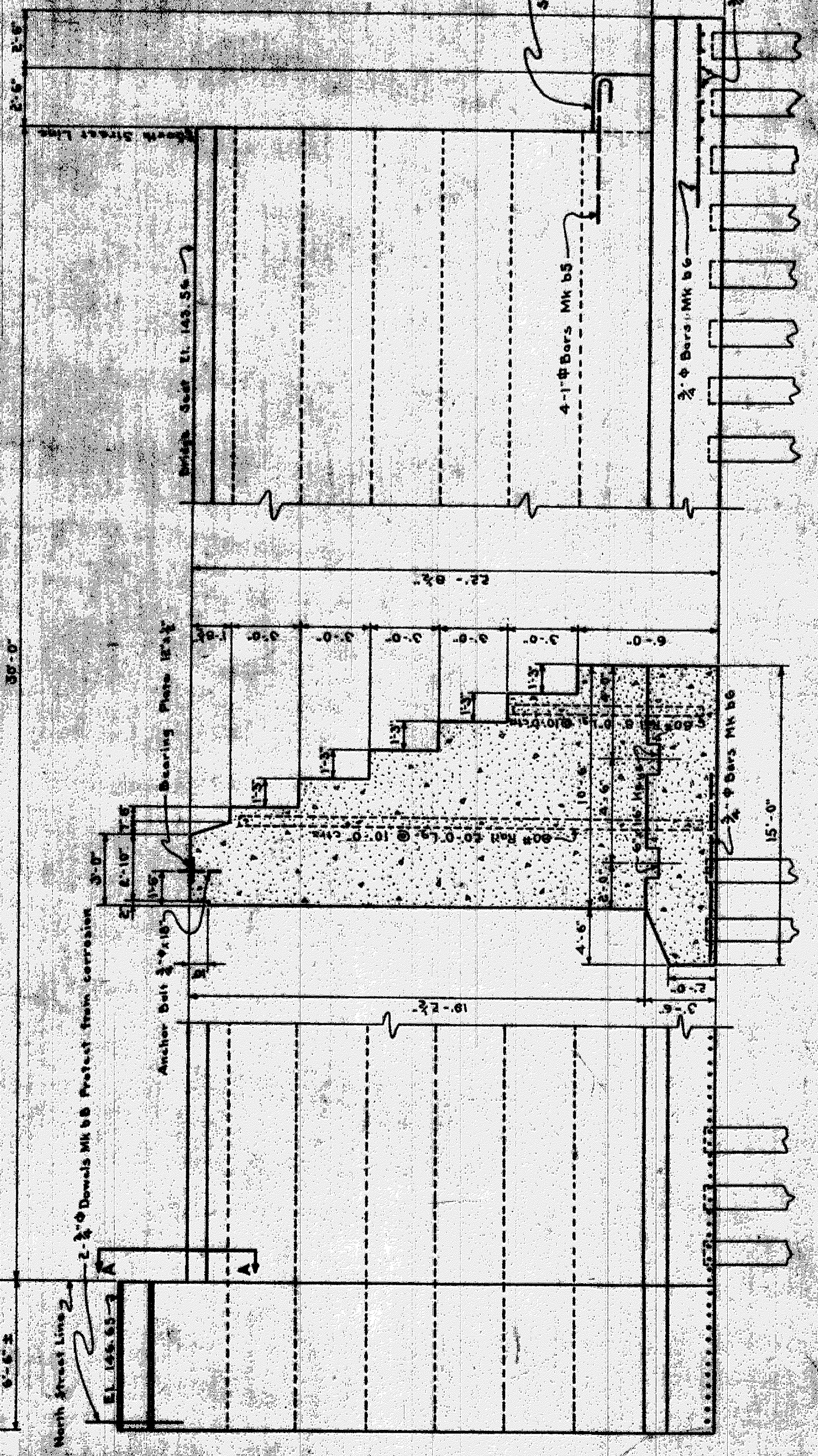
DETAIL FOR ABUTMENT BEARING PLATE



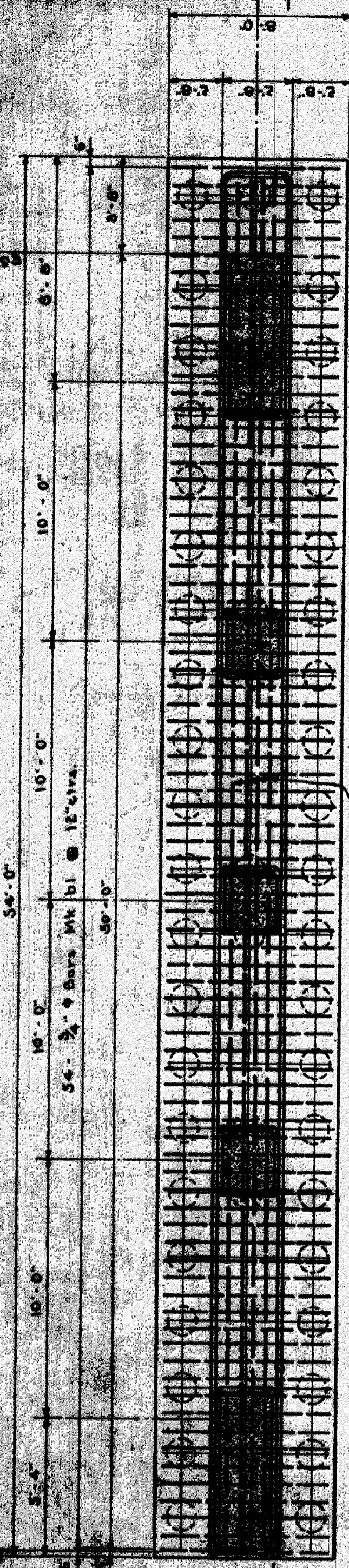
SECTION A-A



FOOTING FOR EAST BENT



DETAIL OF ABUTMENT



PLAN

Approved: *[Signature]*
 Chief Engineer, D. G. M. & M. Ry.
 Approved: *[Signature]*
 City Engineer

GRAND TRUNK RAILWAY SYSTEM
 WESTERN LINES
 DEQUINDRE GRADE SEPARATION
 DETROIT, MICHIGAN
 EAST ABUT. & BENT FOOTING-ADELAIDE ST.
 SCALE: 3/4" = 1'-0"
 OFFICE OF CHIEF ENGINEER
 DETROIT, MICHIGAN
 AUGUST 28, 1923
 DR. H.S.F.
 TR. H.S.F.
 CH. L.S.
 JOURNAL NO. 318
 FILE
 SHEET NO. 2 OF 2

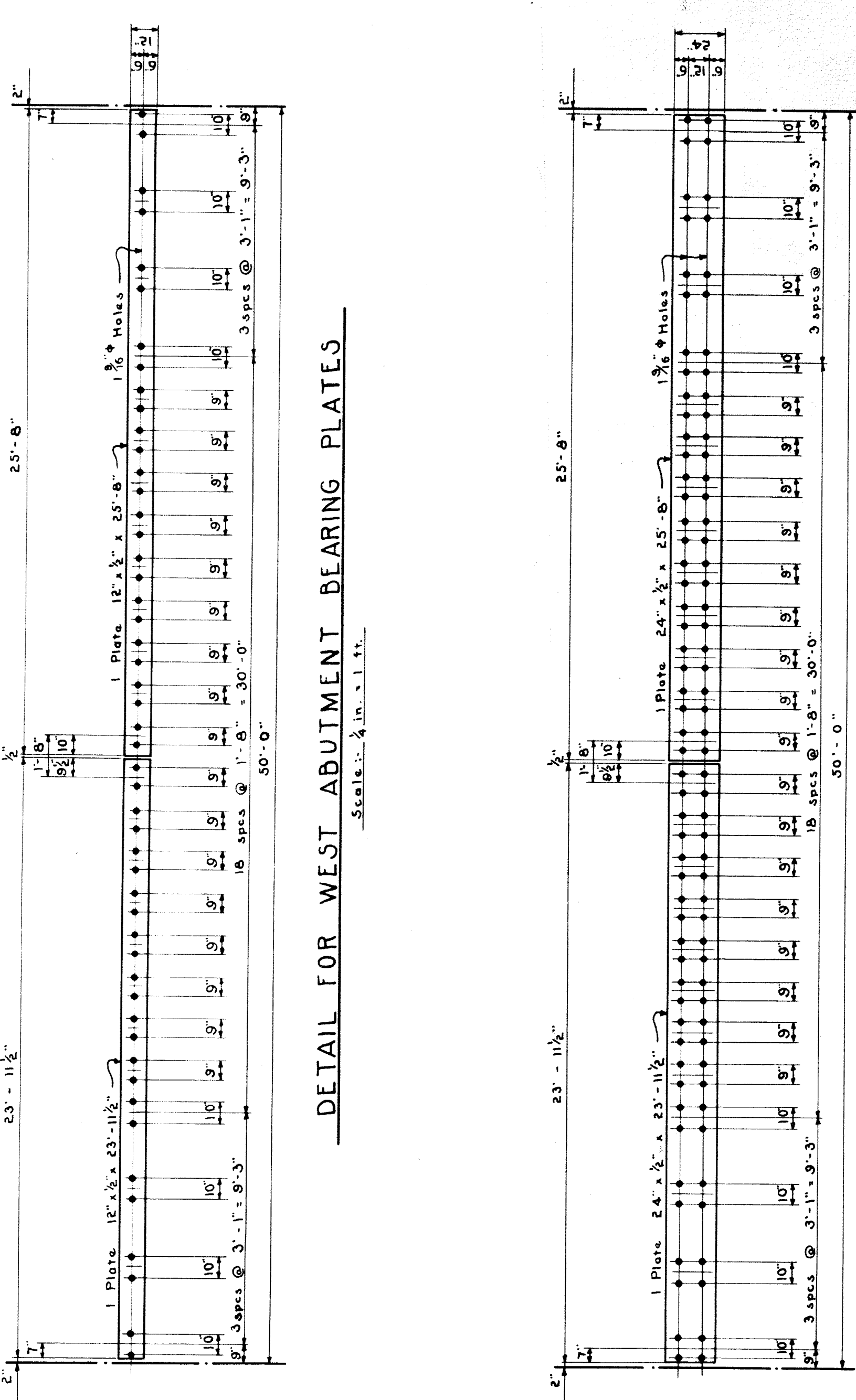
Revised 9-23-26
 Revised as Built 5-7-49

BILL OF REINFORCING STEEL		
Location	No. Mark/Size/Length	Bending Diagram
West Abutment Footing	100 b1 3/4" x 8'-0"	Straight
	4 b2 3/4" x 26'-0"	
Bottom West Bent Footing Beam	8 b3 1" x 30'-0"	
Top West Bent Footing Beam	8 b4 3/4" x 26'-0"	
West Bent Footing	60 b5 3/4" x 9'-6"	
Top Bent Above Arch	16 b6 3/4" x 26'-0"	
Top Bent	20 b7 1" x 30'-0"	
Bent Over Arch	16 b8 3/4" x 14'-0"	
Bent Column Ties	66 b9 3/4" x 6'-2"	
	60 b10 3/4" x 11'-4"	
East Bent Column	60 b11 3/4" x 16'-9"	Straight
West Bent Column	62 b12 3/4" x 23'-0"	
	72 b13 3/4" x 26'-0"	
Bent Upper Stirrups	16 b14 3/4" x 26'-6"	
Bent Lower Stirrups	20A d1 3/4" x 7'-0"	
Deck Main Span	24 d2 3/4" x 4'-0"	
Deck Short Span	6 d3 3/4" x 6'-4"	
Deck Roadway	114 d4 3/4" x 17'-3"	
Deck Sidewalk	114 d5 3/4" x 16'-9"	
	336 d6 3/4" x 11'-2"	
Post Dowels	44 d7 3/4" x 7'-0"	
Maining	8 d8 3/4" x 15'-1 1/2"	
	4 d9 3/4" x 5'-1 1/2"	
	6 d10 3/4" x 13'-0"	
	8 d11 3/4" x 15'-11"	
	24 d12 3/4" x 13'-8"	
	6 d13 3/4" x 13'-11"	
	5 d14 3/4" x 5'-11"	
Rolling Dowels	55 d15 3/4" x 3'-6"	
	24 d16 3/4" x 5'-6"	
Sidewalk Stab	20 d17 3/4" x 4'-0"	
	374 d18 3/4" x 1'-10"	Straight - To be cut in field
	132 d19 3/4" x 8'-2"	

BILL OF FLOOR BEAMS		
Location	No. Size Length	Remarks
Deck Sidewalk	6 20" x 8 1/2" x 32'-0"	No. Drilling
Deck Roadway	17 20" x 8 1/2" x 32'-0"	
Deck Sidewalk	6 20" x 8 1/2" x 31'-0"	
Deck Roadway	17 20" x 8 1/2" x 31'-0"	
Deck Short Span	25 15" x 4 1/2" x 20'-0"	

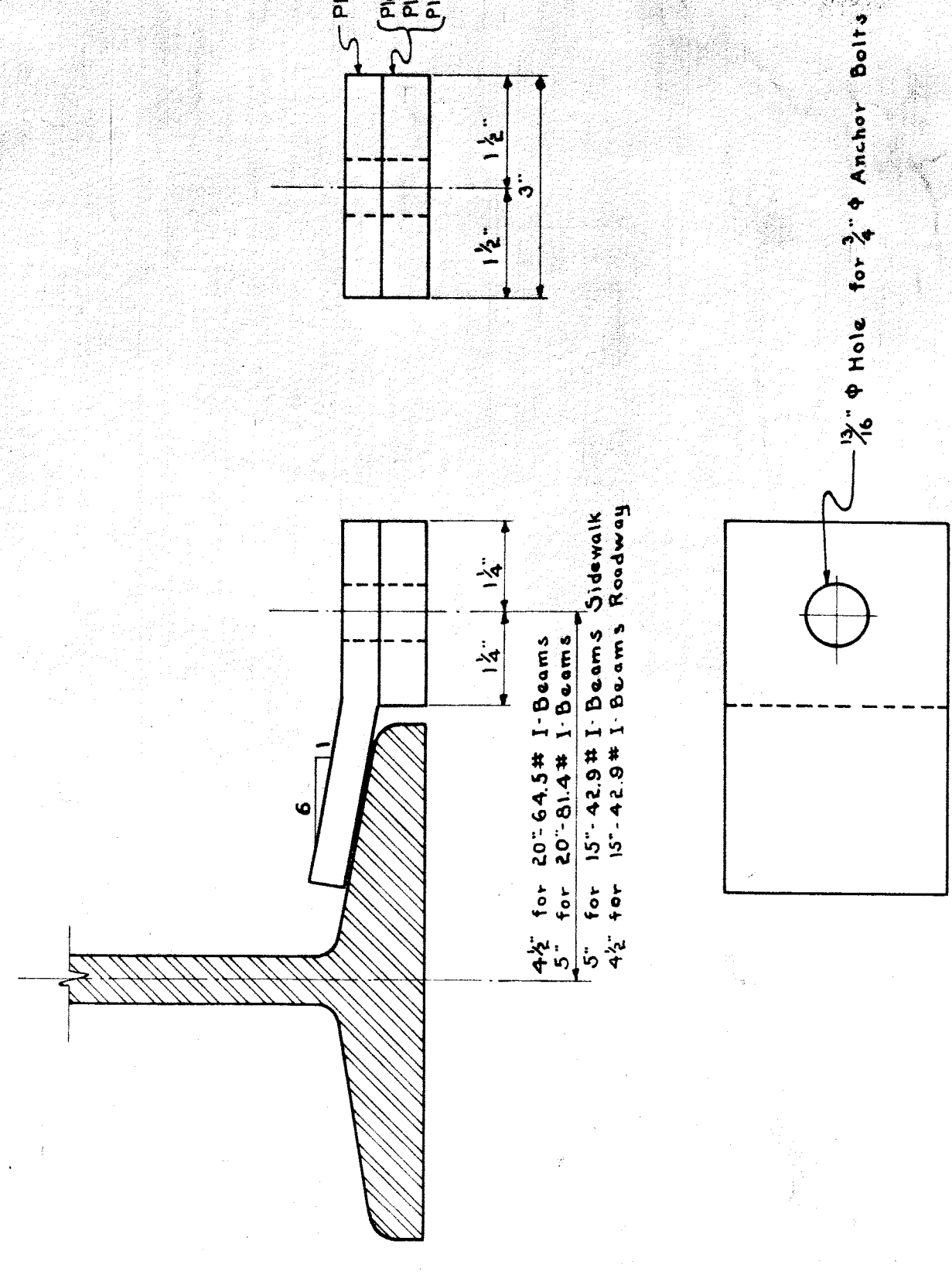
MISCELLANEOUS MATERIAL		
Item	No. Size Length	Description
Bent Bearing Plates	2 PI 24" x 1/2" x 25'-0"	See Detail
West Abutment Bearing Plates	1 PI 12" x 1/2" x 25'-8"	
Anchor Bolts	250 3/4" x 9 1/8"	Swedge Bolts with Hex. Nuts and Washers
	300 PI 3/4" x 1/2" x 0'-5"	
	100 PI 3/4" x 1/2" x 0'-2 1/2"	
	136 PI 3/4" x 1/2" x 0'-2 1/2"	
	64 PI 3/4" x 1/2" x 0'-2 1/2"	

BILL OF WIRE MESH		
Location	Lin. Ft. Width	Description
Bottom at Deck	600 48"	A. S. & W. Co. 1" - No. 6 Gage 4 in. Wire Mesh
Sidewalk Beams	700 48"	A. S. & W. Co. 1" - No. 6 Gage 4 in. Wire Mesh
Blast Protection Roadway	200 48"	A. S. & W. Co. 1" - No. 12 Gage 4 in. Wire Mesh
Blast Protection Sidewalk	160 32"	A. S. & W. Co. 1" - No. 12 Gage 4 in. Wire Mesh
Protective Coat Deck	1100 48"	A. S. & W. Co. 1" - No. 12 Gage 4 in. Wire Mesh

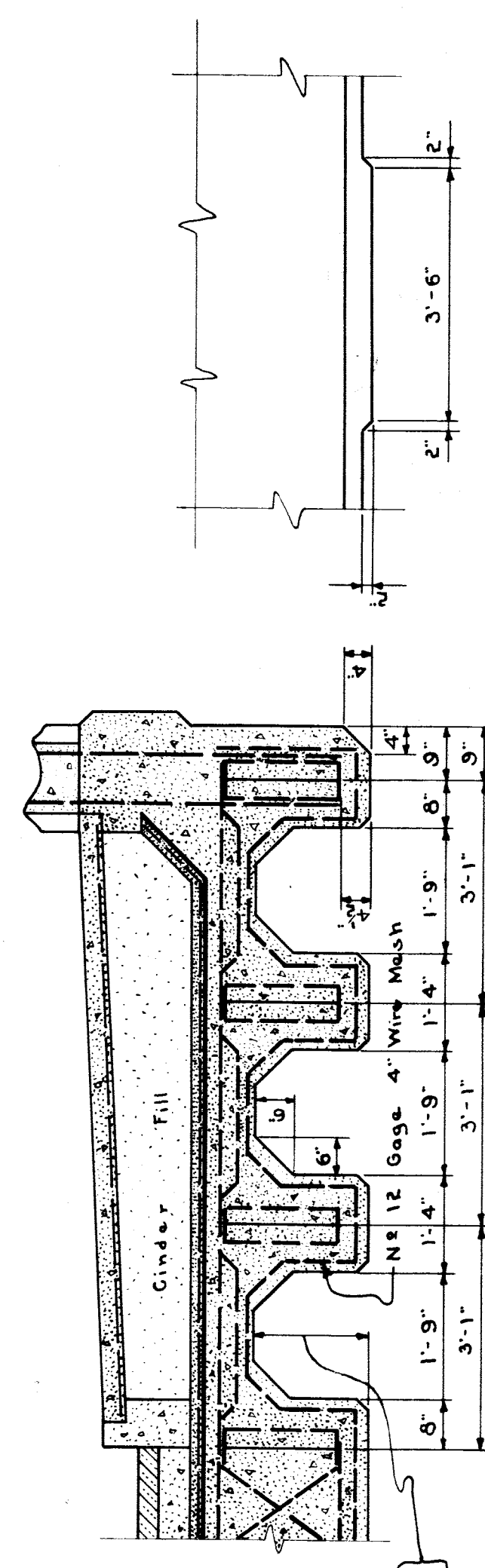


DETAIL FOR WEST ABUTMENT BEARING PLATES
Scale: 1/2 in. = 1 ft.

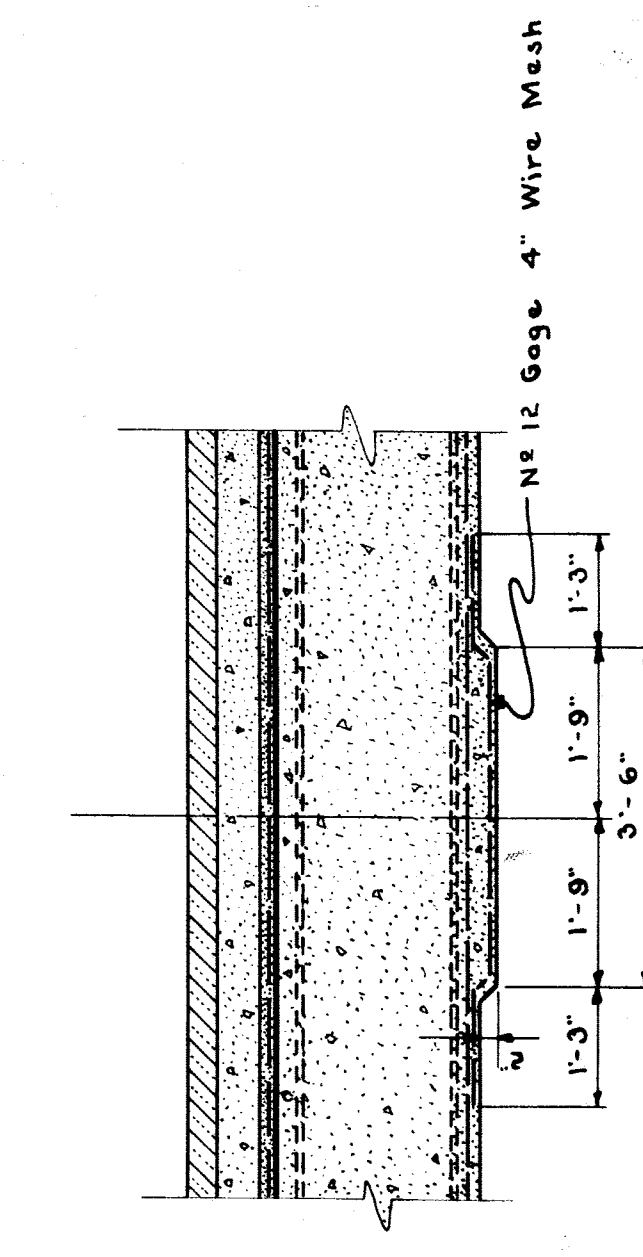
DETAIL FOR BENT BEARING PLATES
BOTH BENTS ALIKE
Scale: 1/2 in. = 1 ft.



DETAIL OF I-BEAM CLIPS
Scale: 1/2 in. = 1 in.



DETAIL OF BLAST PROTECTION UNDER WALK
Scale: 1/2 in. = 1 ft.

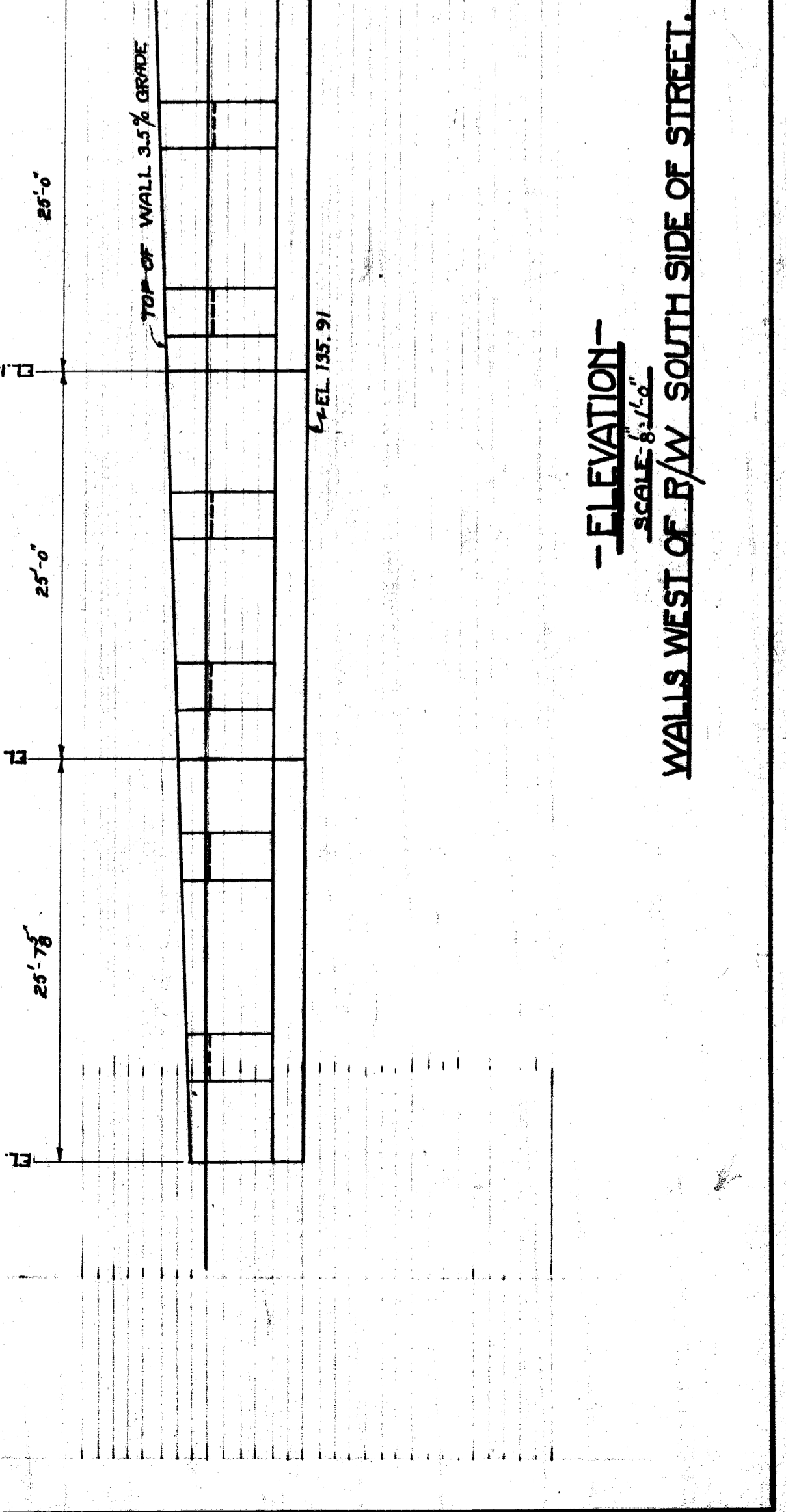
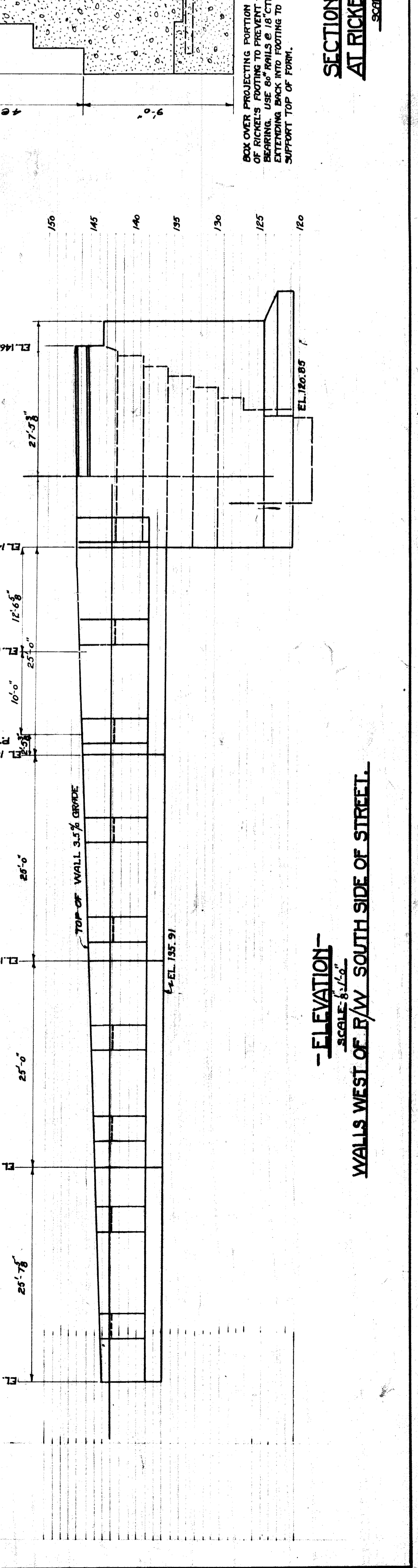
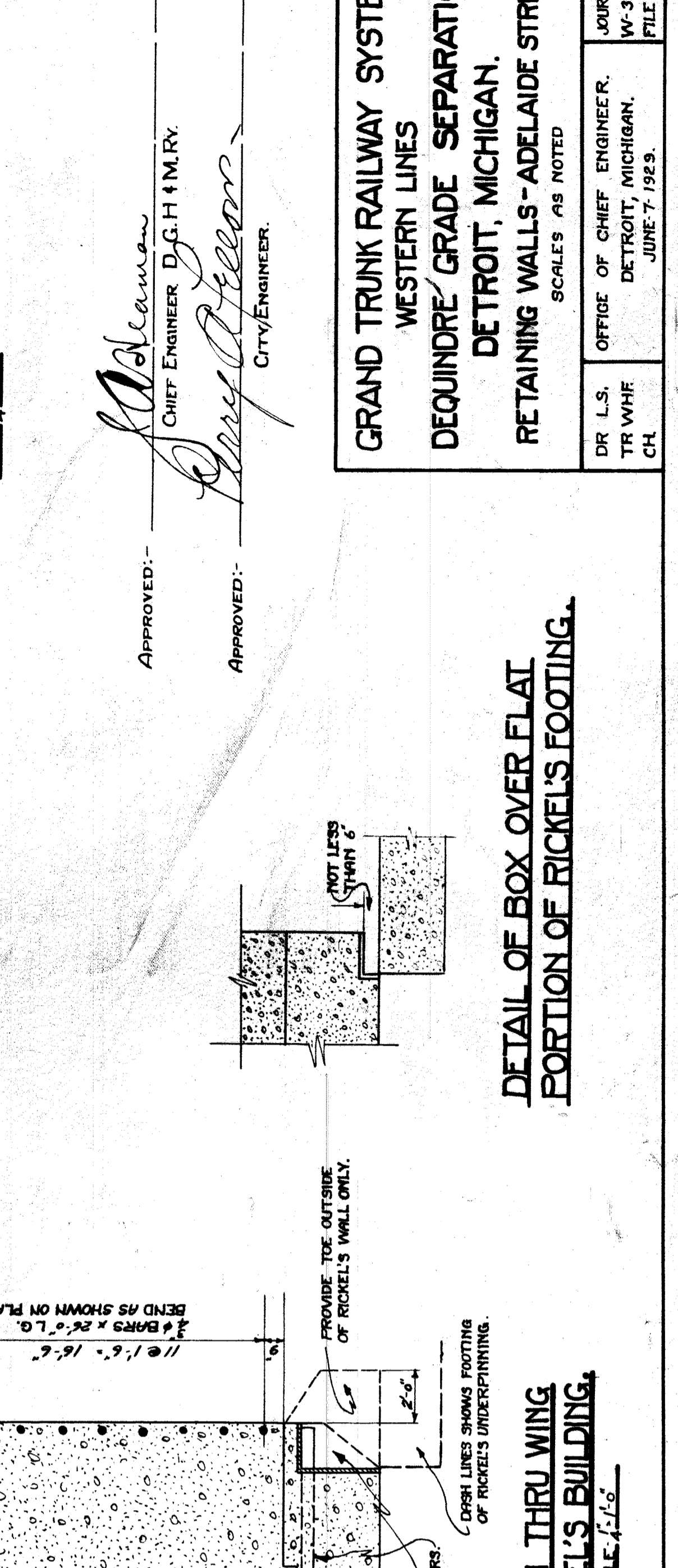
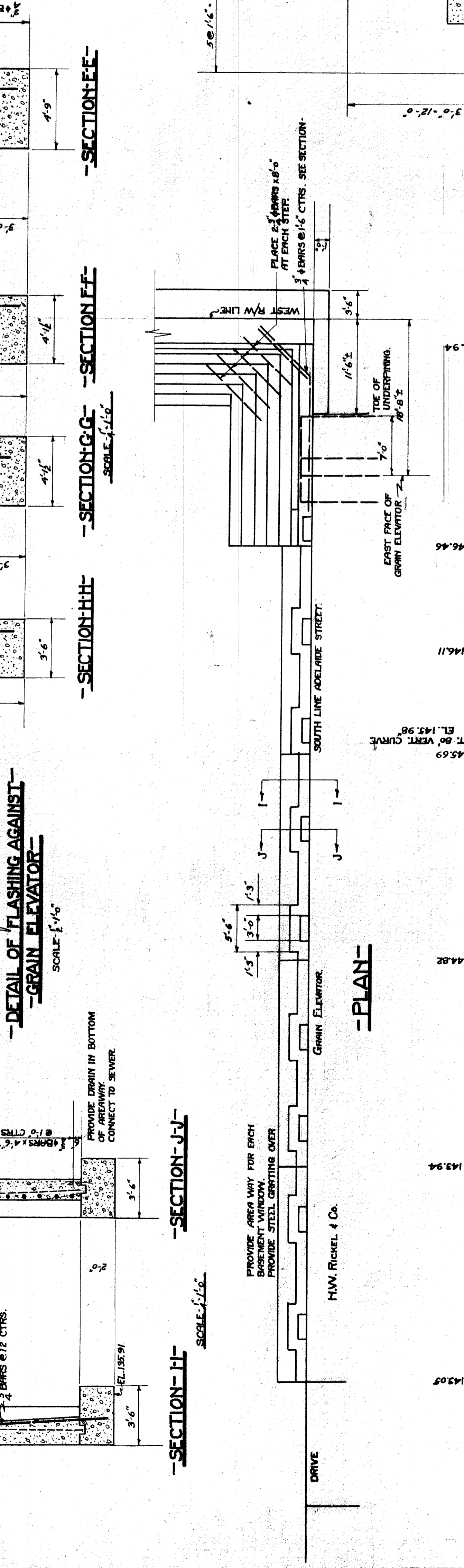
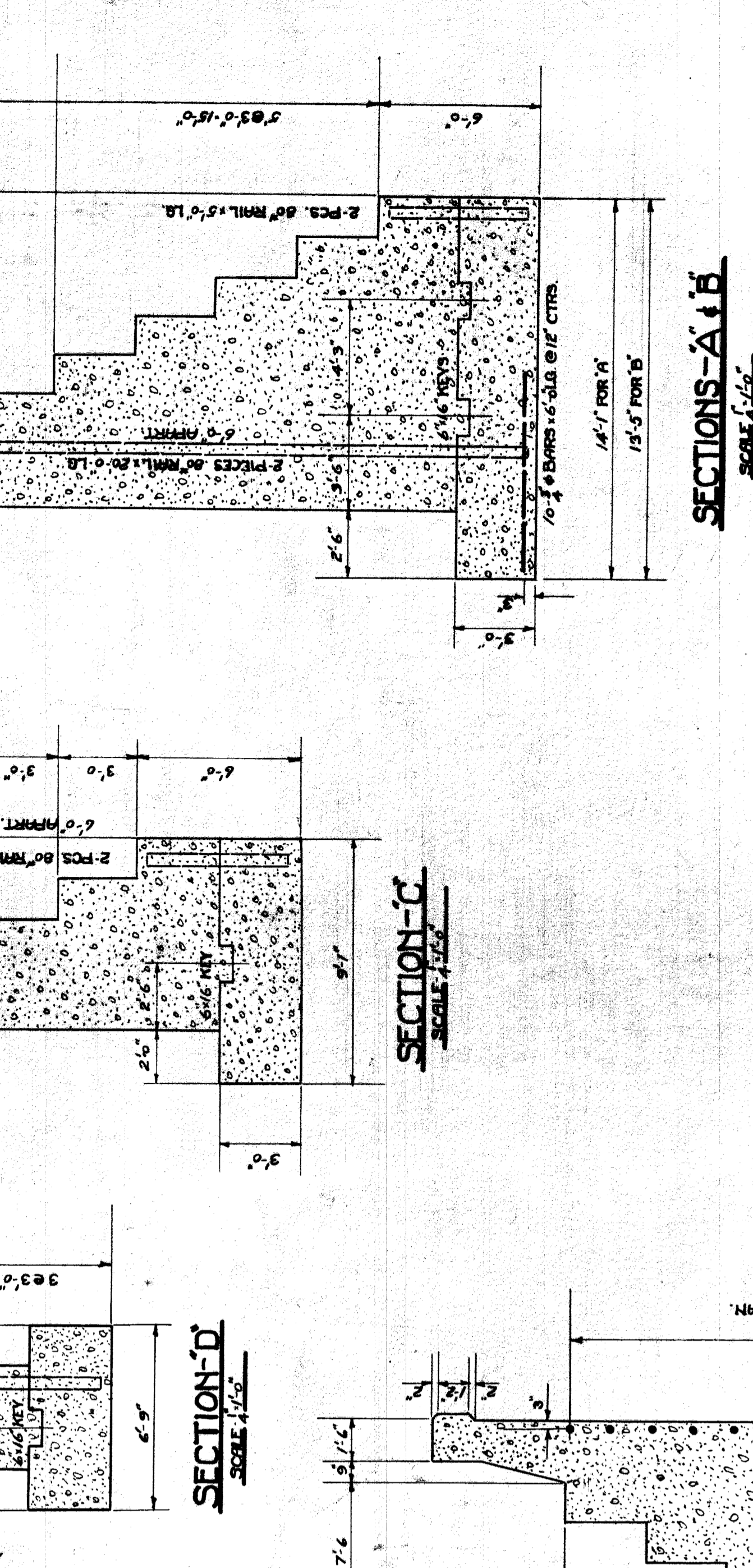
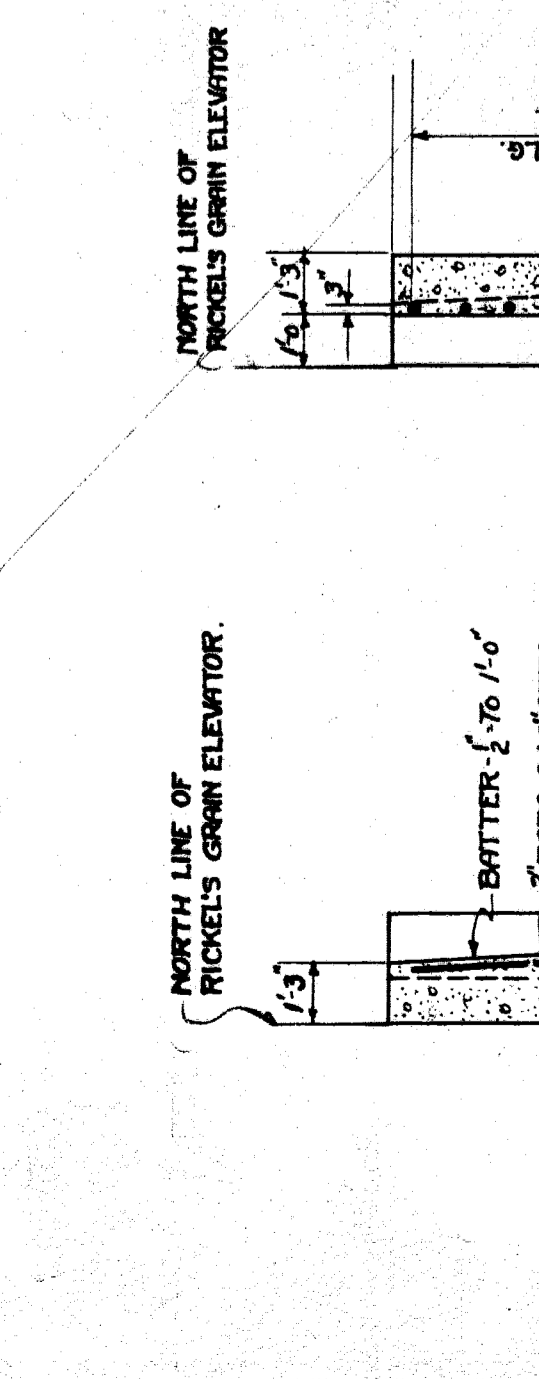
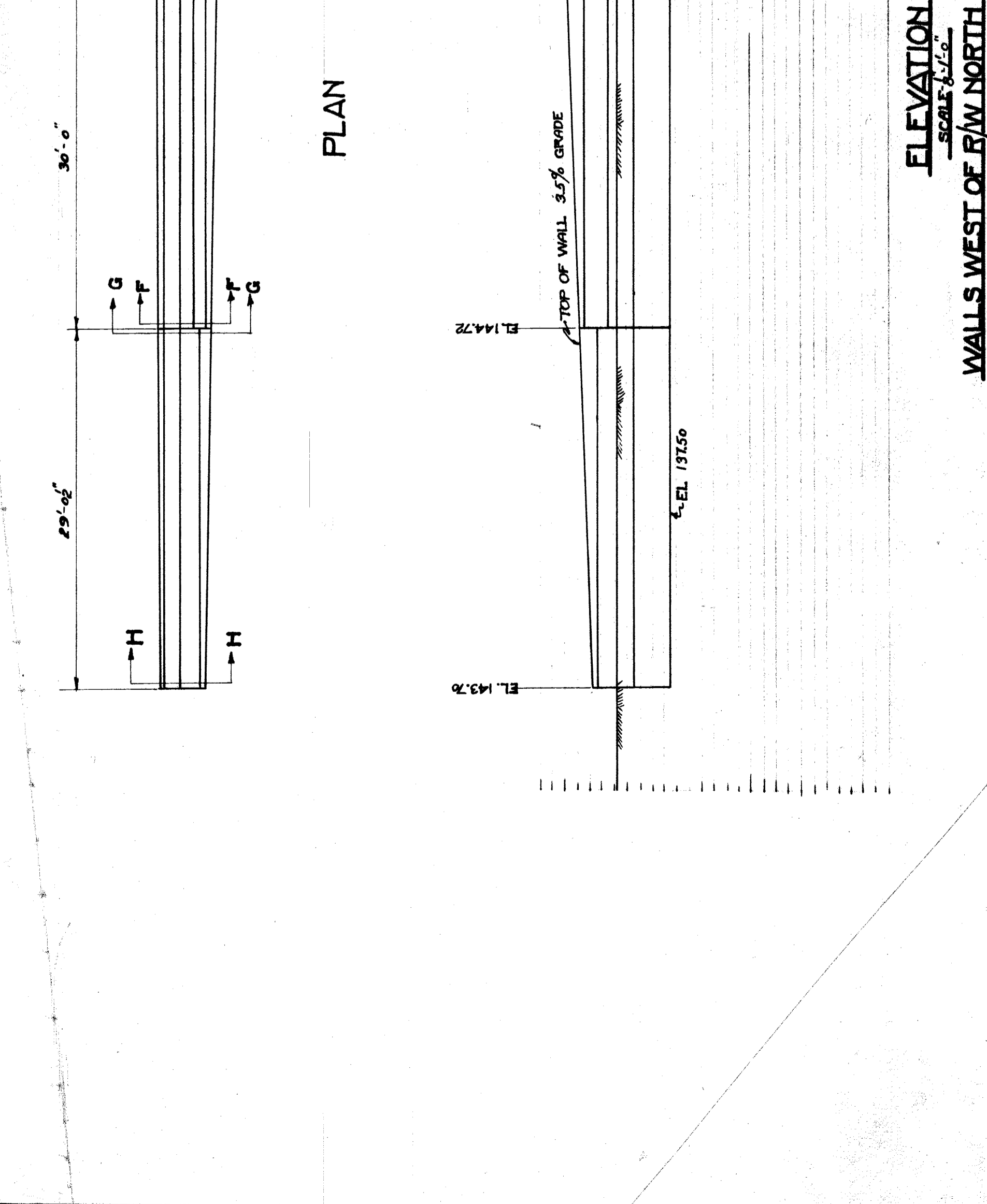
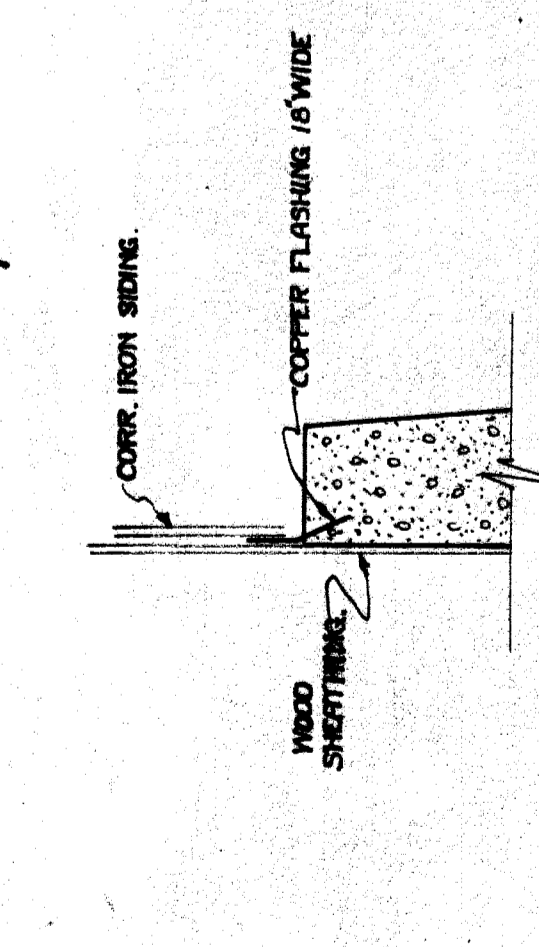
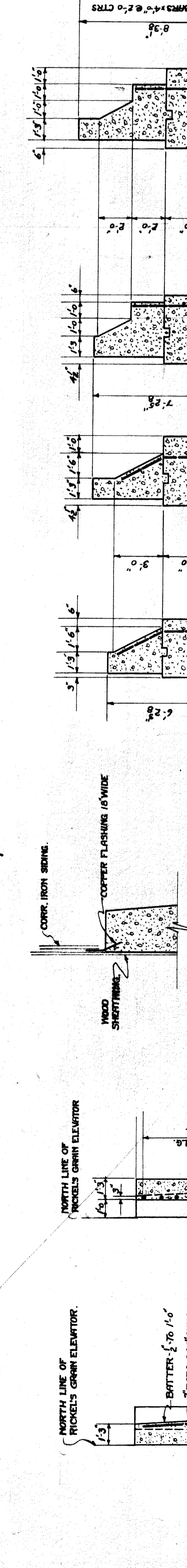
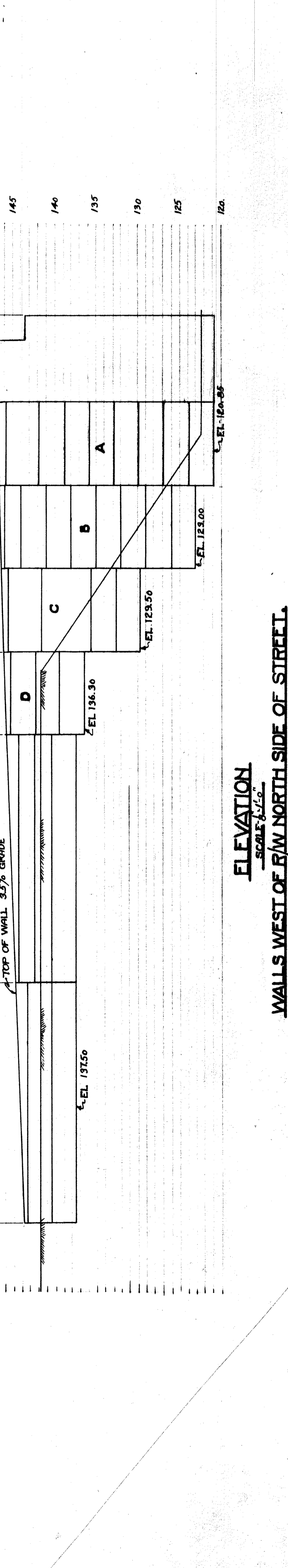
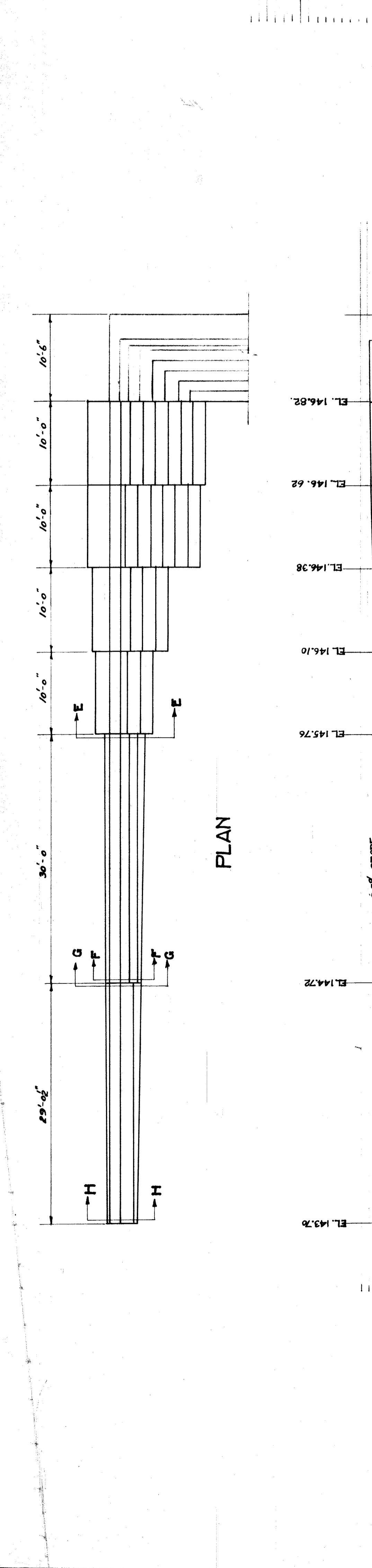
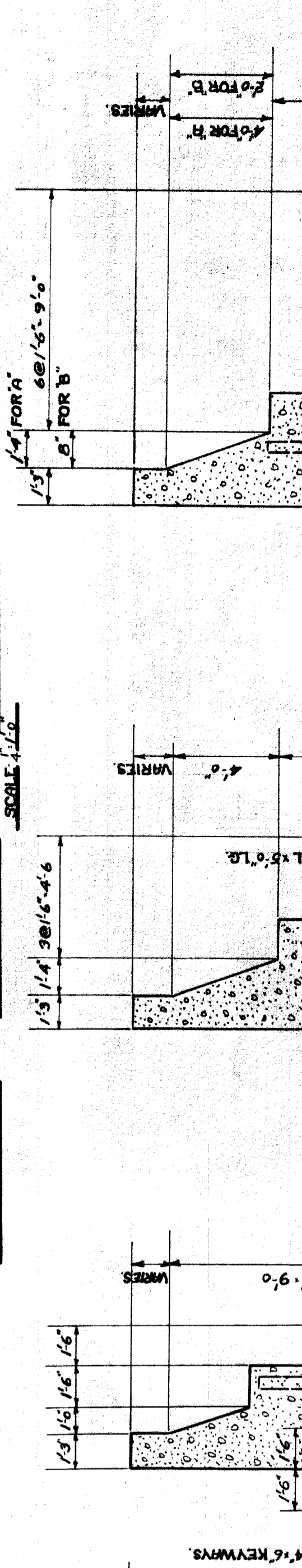
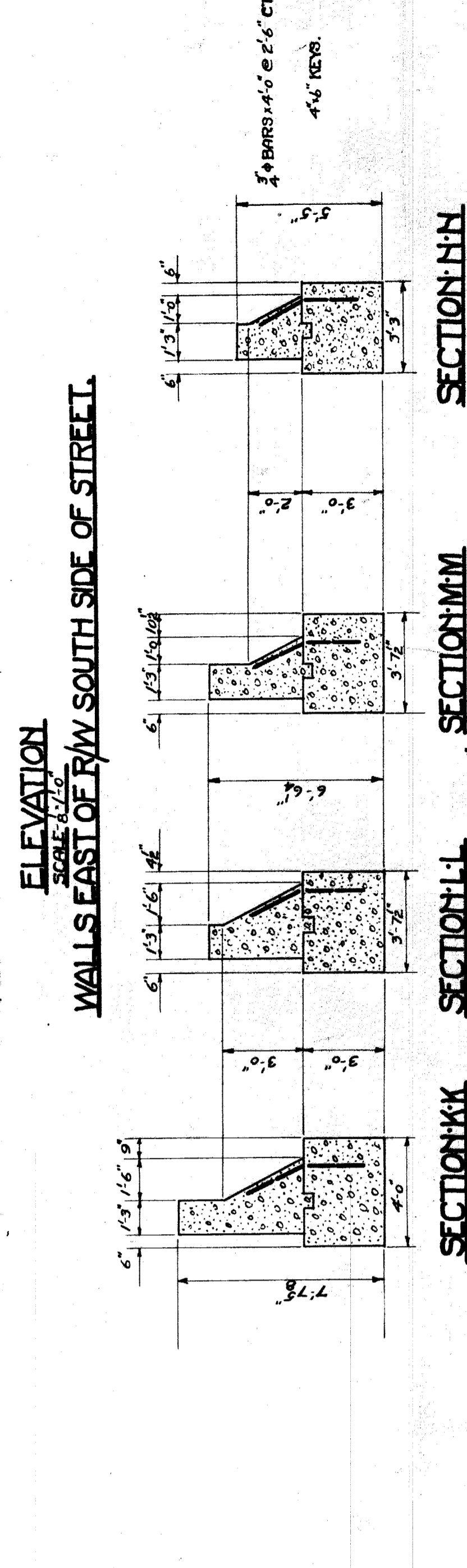
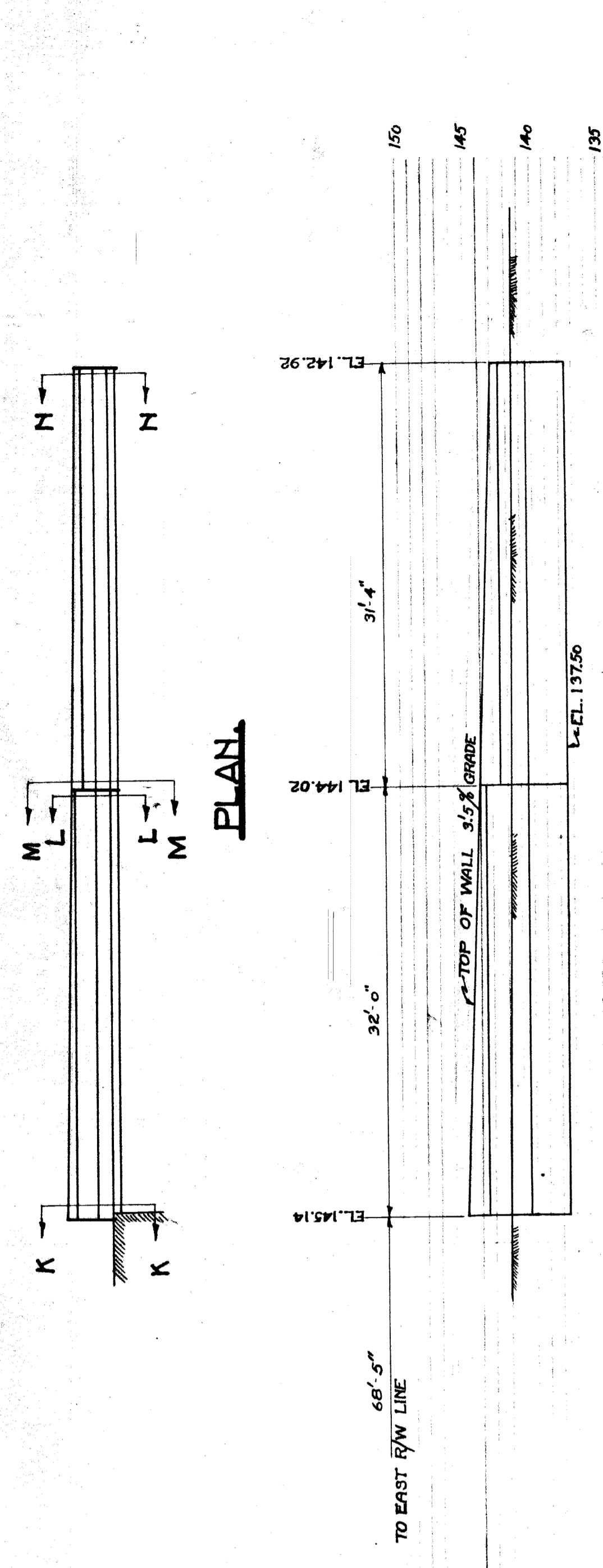


DETAIL OF BLAST PROTECTION
Scale: 1/2 in. = 1 ft.

Approved: *[Signature]*
Chief Engineer D. G. H. & M. Ry.
City Engineer

GRAND TRUNK RAILWAY SYSTEM
WESTERN LINES
DEQUINDRE GRADE SEPARATION
DETROIT, MICHIGAN
BRIDGE - ADELAIDE STREET
SCALE: AS SHOWN

DR. H.S.F. OFFICE OF CHIEF ENGINEER
DETROIT, MICHIGAN
W. JISE
CH. L.S. FEBRUARY 26, 1929
FILE
SHEET NO. 4 OF 4



APPROVED: *D. G. H. M. Ry.*
 CHIEF ENGINEER, D.G.H.M. RY.
 CITY ENGINEER

GRAND TRUNK RAILWAY SYSTEM
 WESTERN LINES
 DEQUINRE GRADE SEPARATION
 DETROIT, MICHIGAN.
 RETAINING WALLS - ADELAIDE STREET.
 SCALES AS NOTED

DETAIL OF BOX OVER FLAT
 PORTION OF RICKEL'S FOOTING.

SECTION THRU WING
 AT RICKEL'S BUILDING.
 SCALE: 1/2" = 1'-0"

WALLS WEST OF RW SOUTH SIDE OF STREET.
 SCALE: 1/2" = 1'-0"

T.L. BURRELL
 824 ADELAIDE ST. 9:00 AM Sep. 3 '28