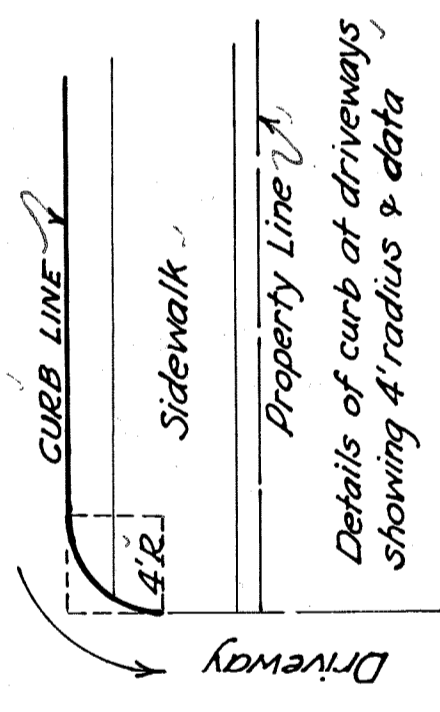
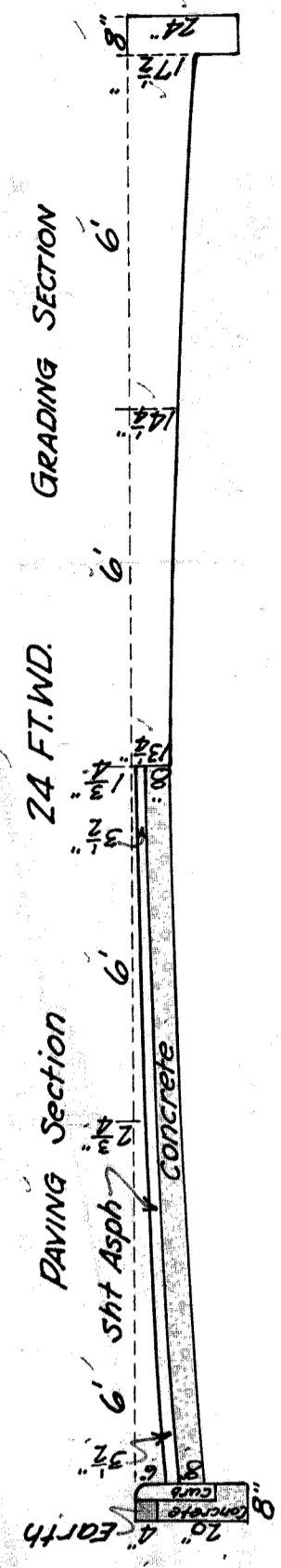


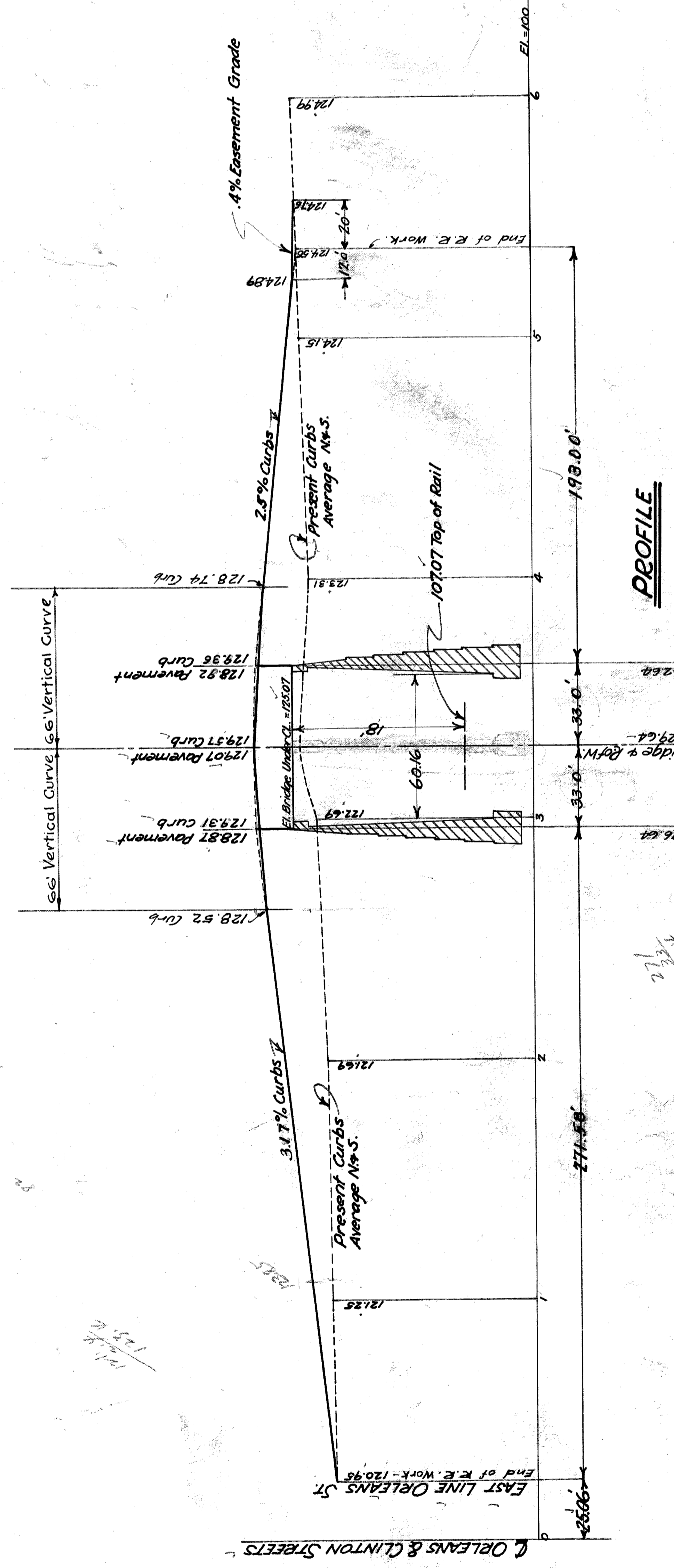
PLAN.

BUILDINGS AS OF SURVEY OF 1920.



$\theta = 90^\circ - 0'$
 $R = 4' - 0''$
 $T = 4' - 0''$
 $ARC = 6.28'$
 $Area = 3.43 \text{ sq.}$

Details of curb at driveways showing 4' radius & data



APPROVED July 23 1927 1926
 R. J. ... CITY ENGINEER
 CHIEF ENGINEER G.T.R.B. SYSTEM WESTERN LINES

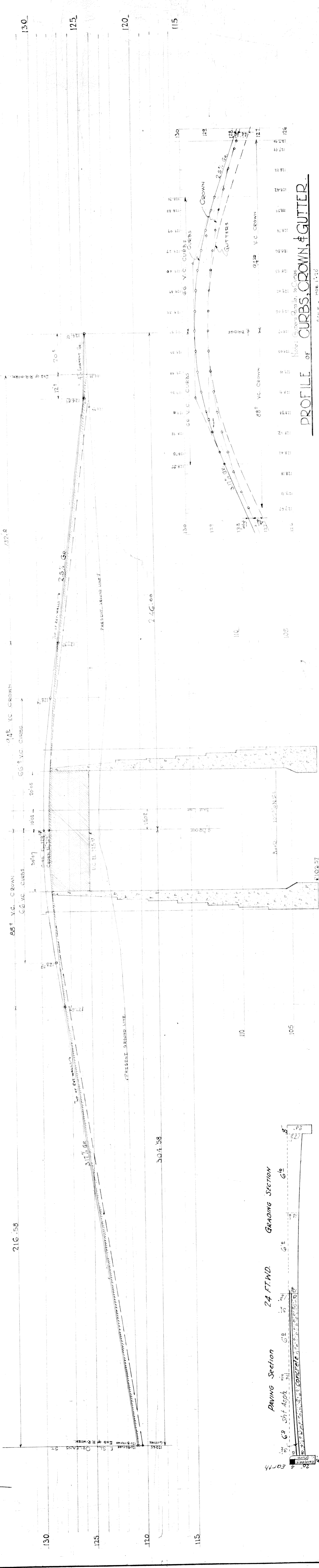
CITY OF DETROIT
 DEPARTMENT OF PUBLIC WORKS
 CITY ENGINEER'S OFFICE
 DEPARTMENT OF GRADE SEPARATION & BRIDGES
 DEQUINRE ST. GRADE SEPARATION
CLINTON ST.

Made by A.W.
 Checked by R.S.
 FEB. 1926
 Scales Plan 1" = 40'
 Sec. 1" = 10'

Curb Grades Revised 6-6-27-J.M.

Field Books #391 & 392

File X075-1



GRAND TRUNK RAILWAY SYSTEM
WESTERN LINES
DEQUINDRE GRADE SEPARATION
DETROIT — MICHIGAN
GEN. PLAN & PROFILE — CLINTON ST.

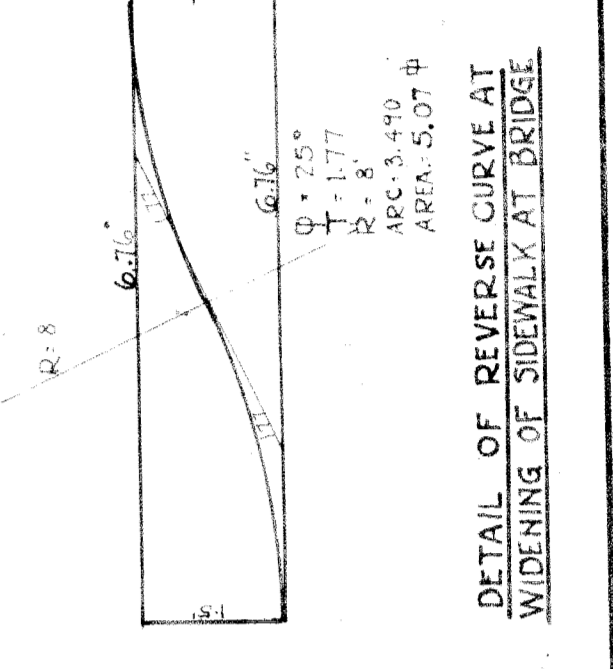
SCALE: 1" = 20 FT. HOR. EXCEPT AS NOTED
 1" = 4 FT. VERT.

APPROVED: *[Signature]*
 Chief Engineer D.G.H.M.E.Y.

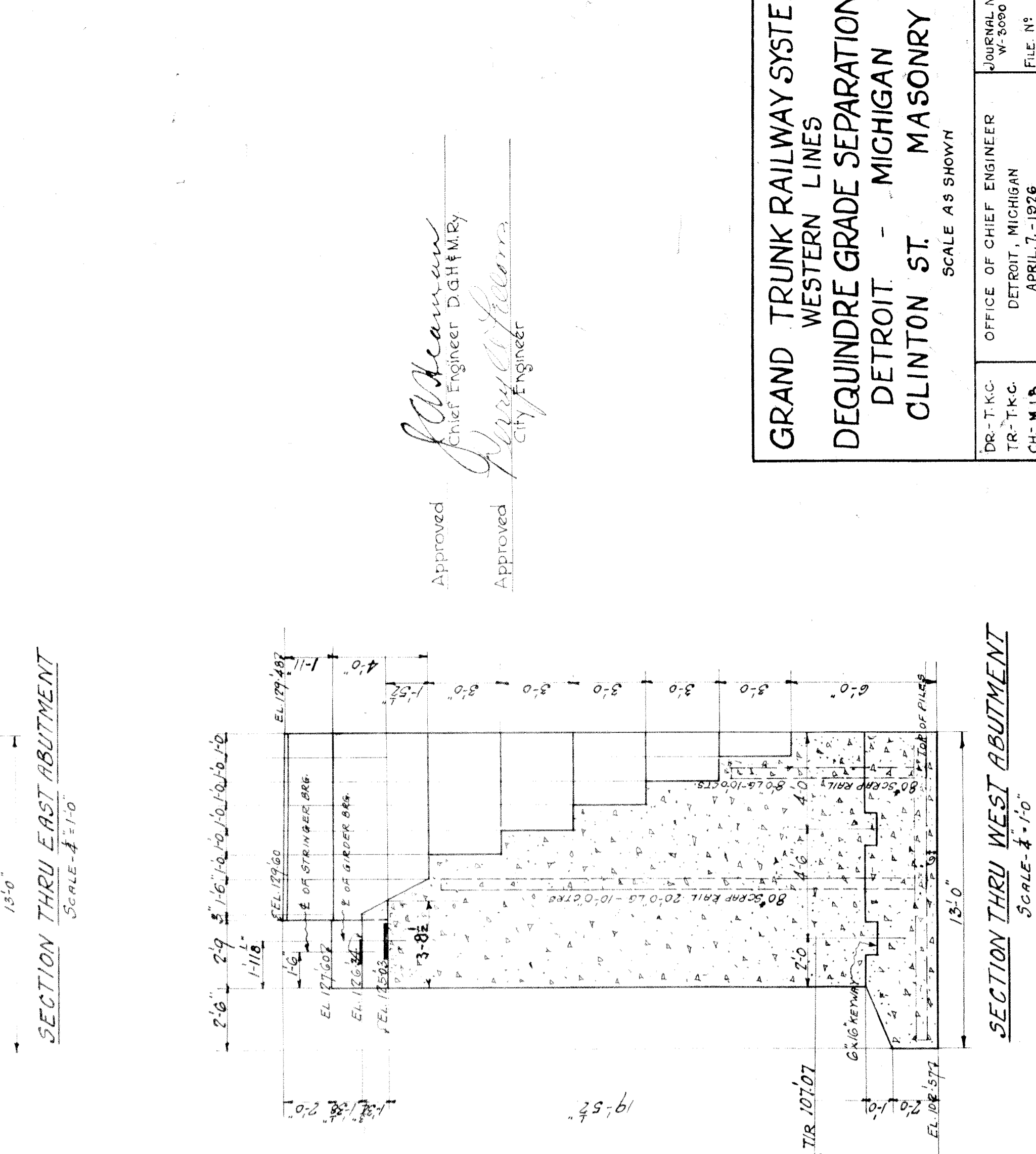
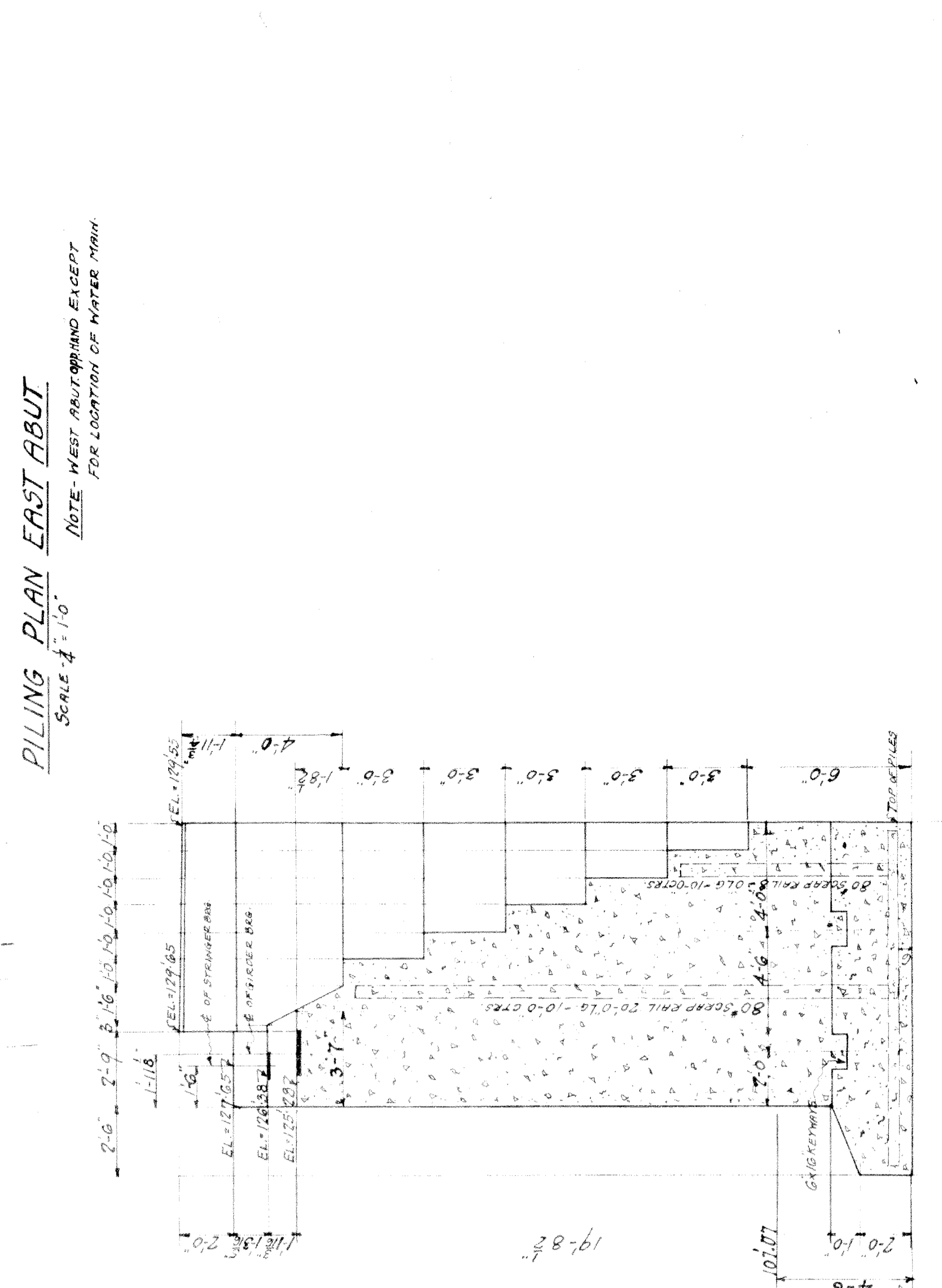
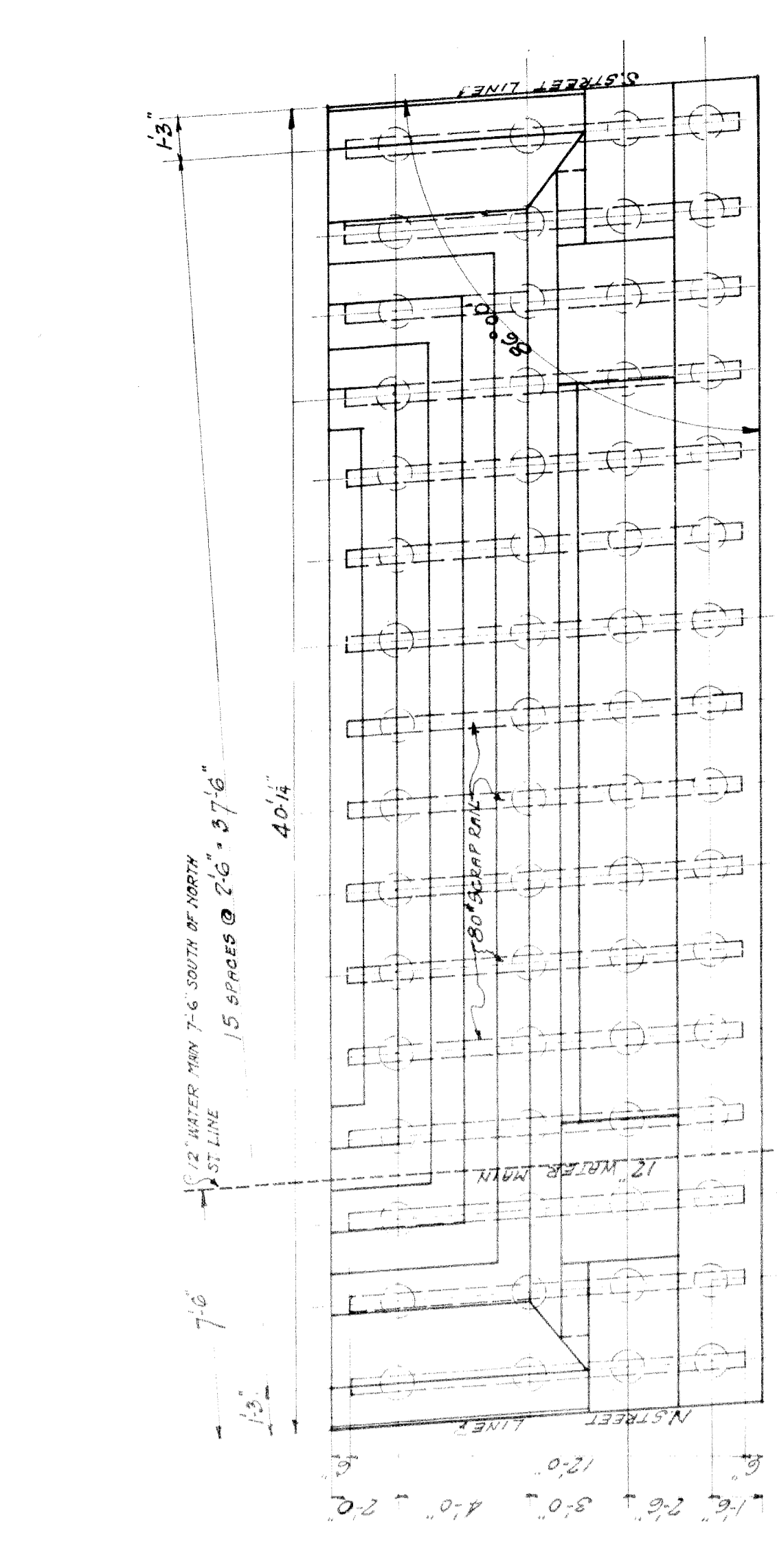
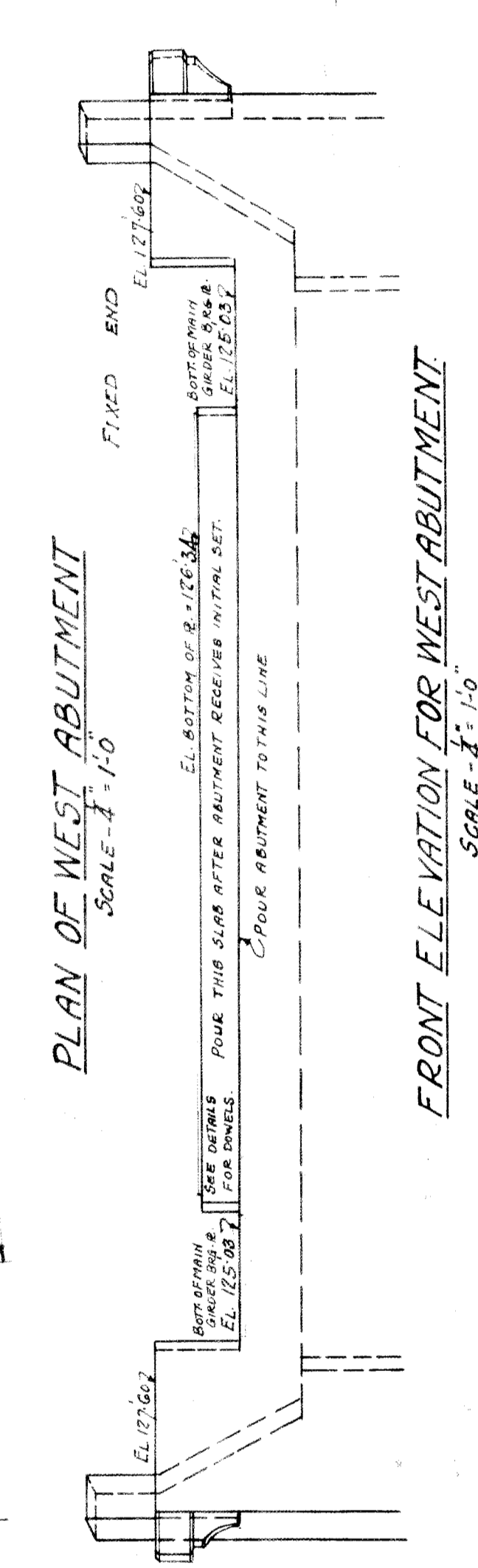
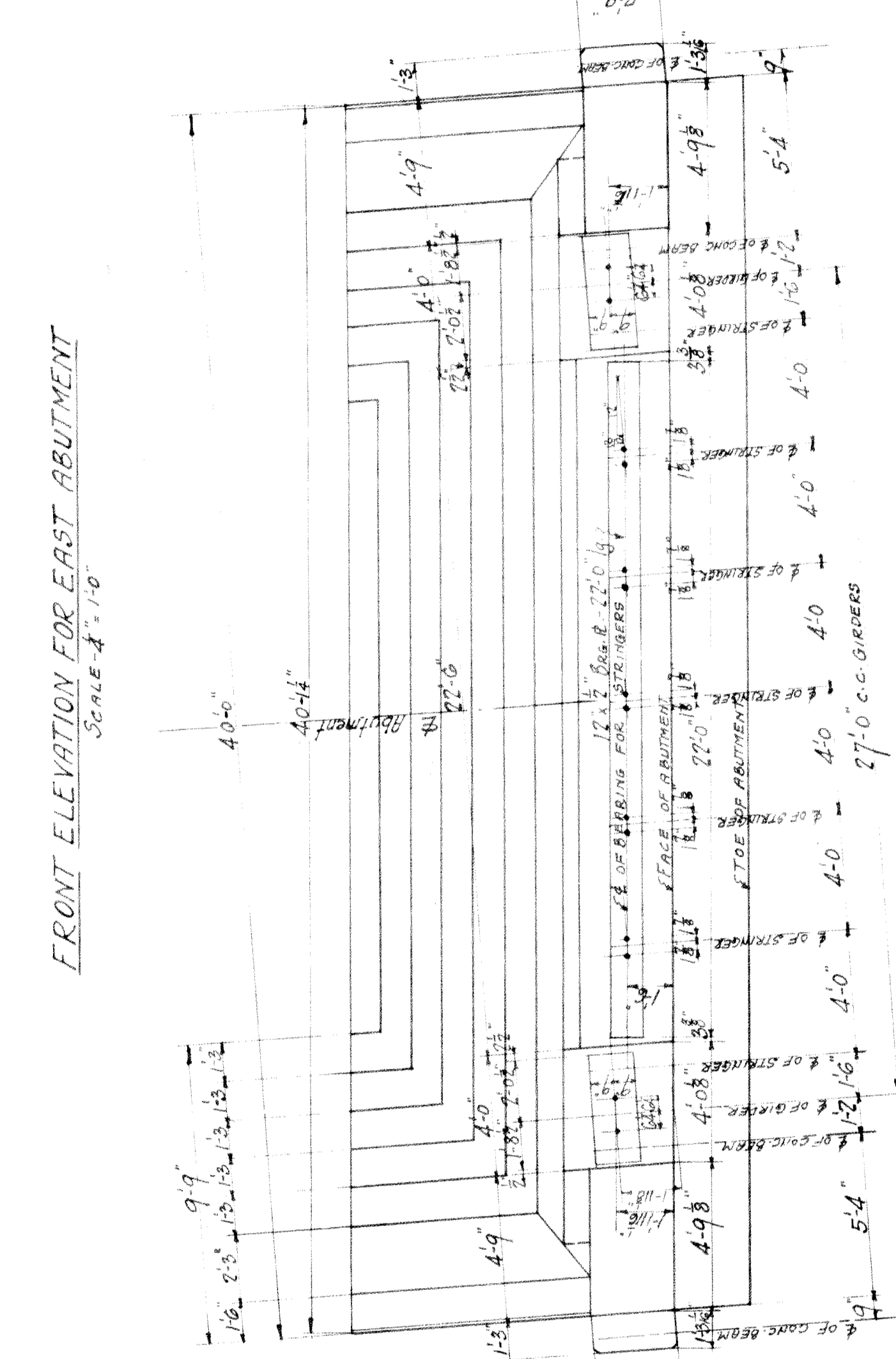
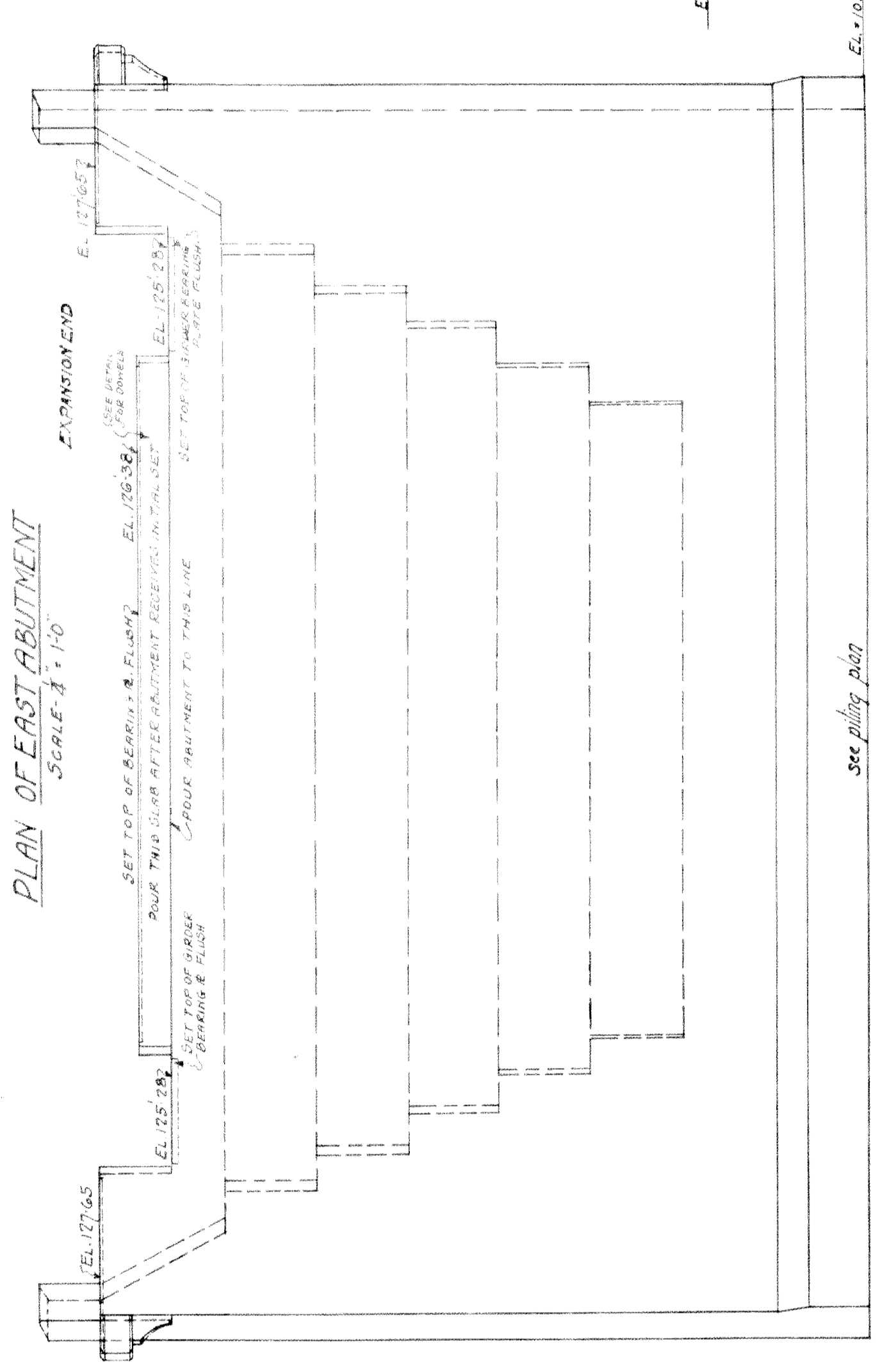
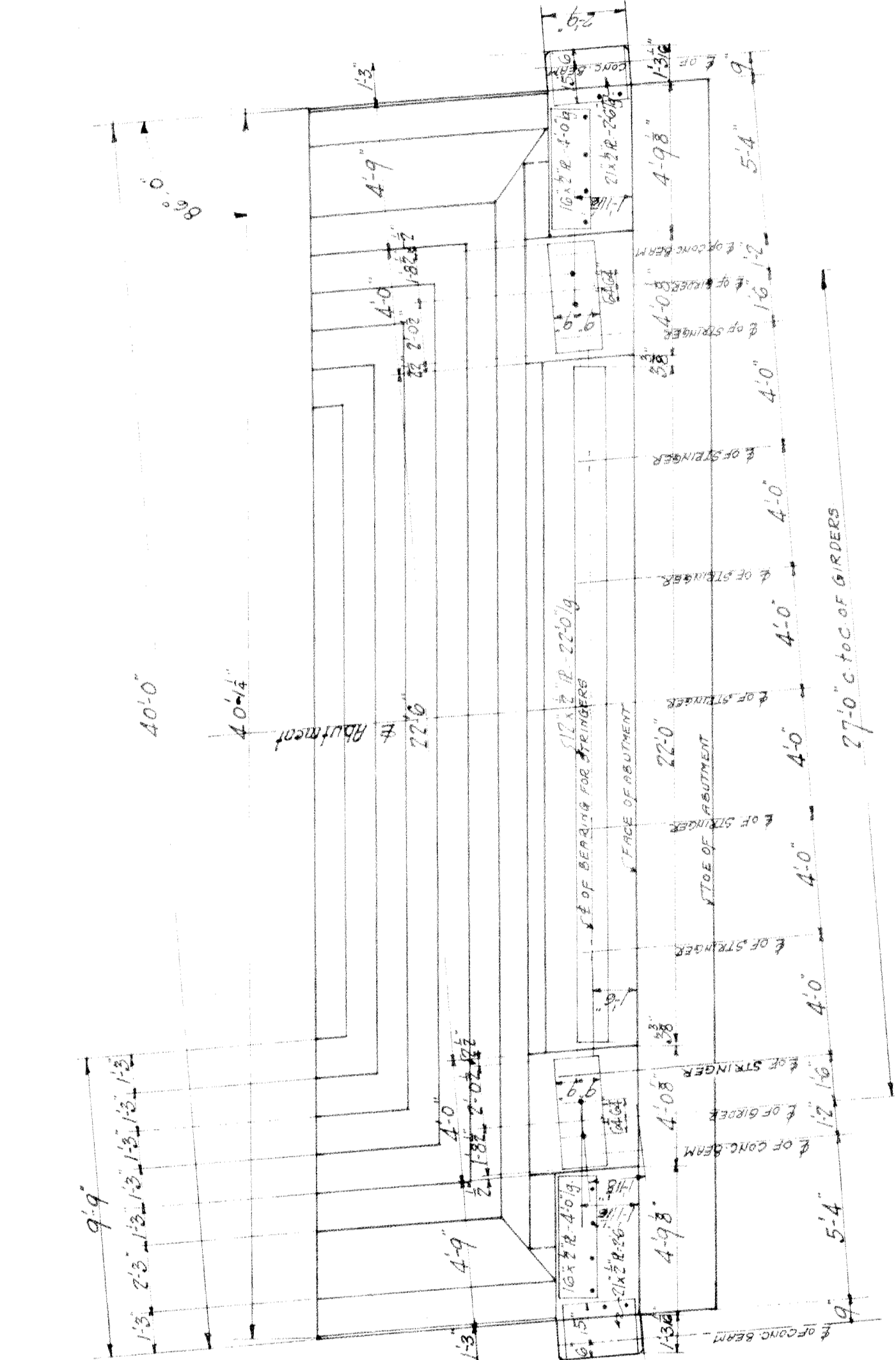
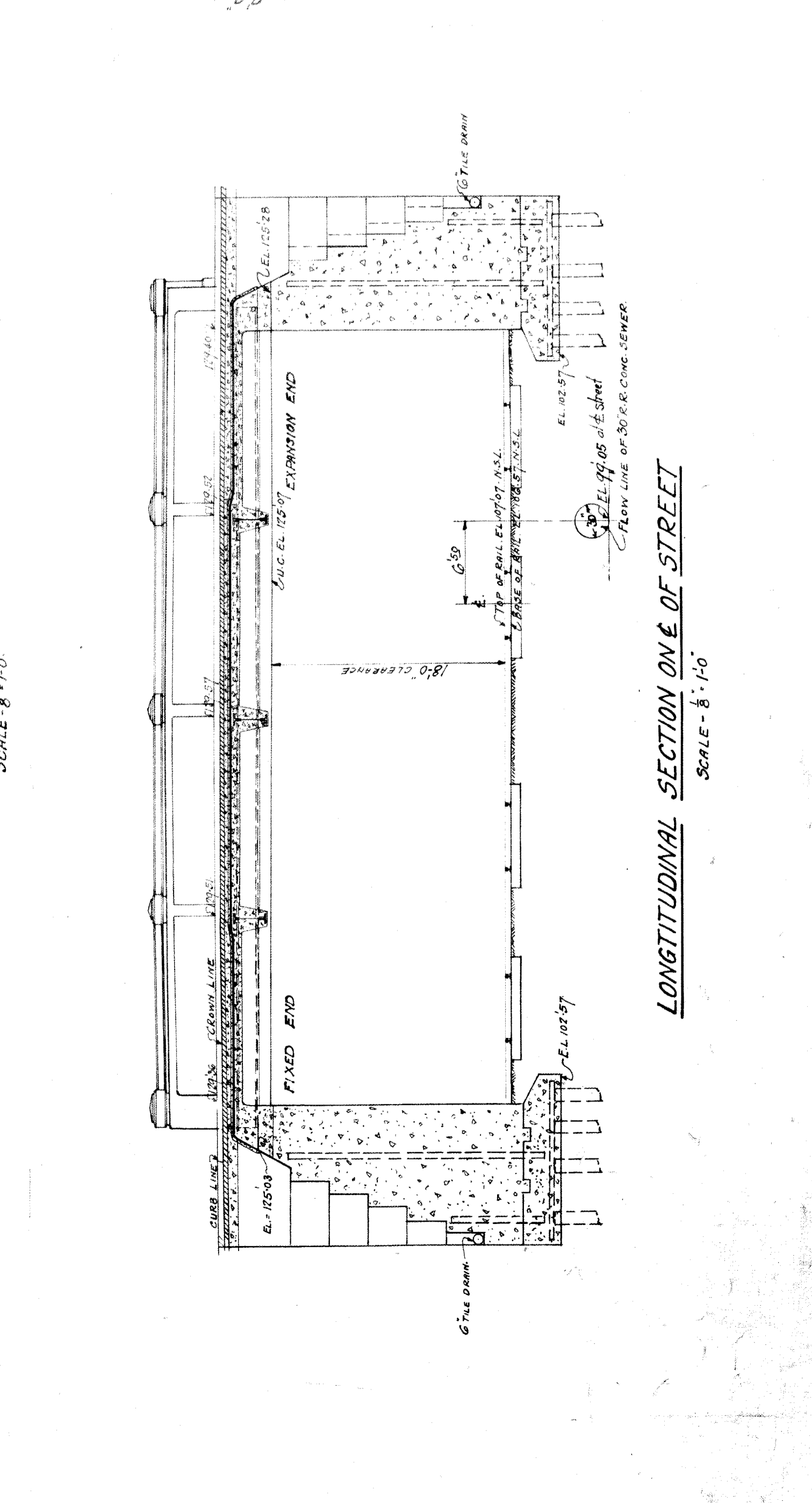
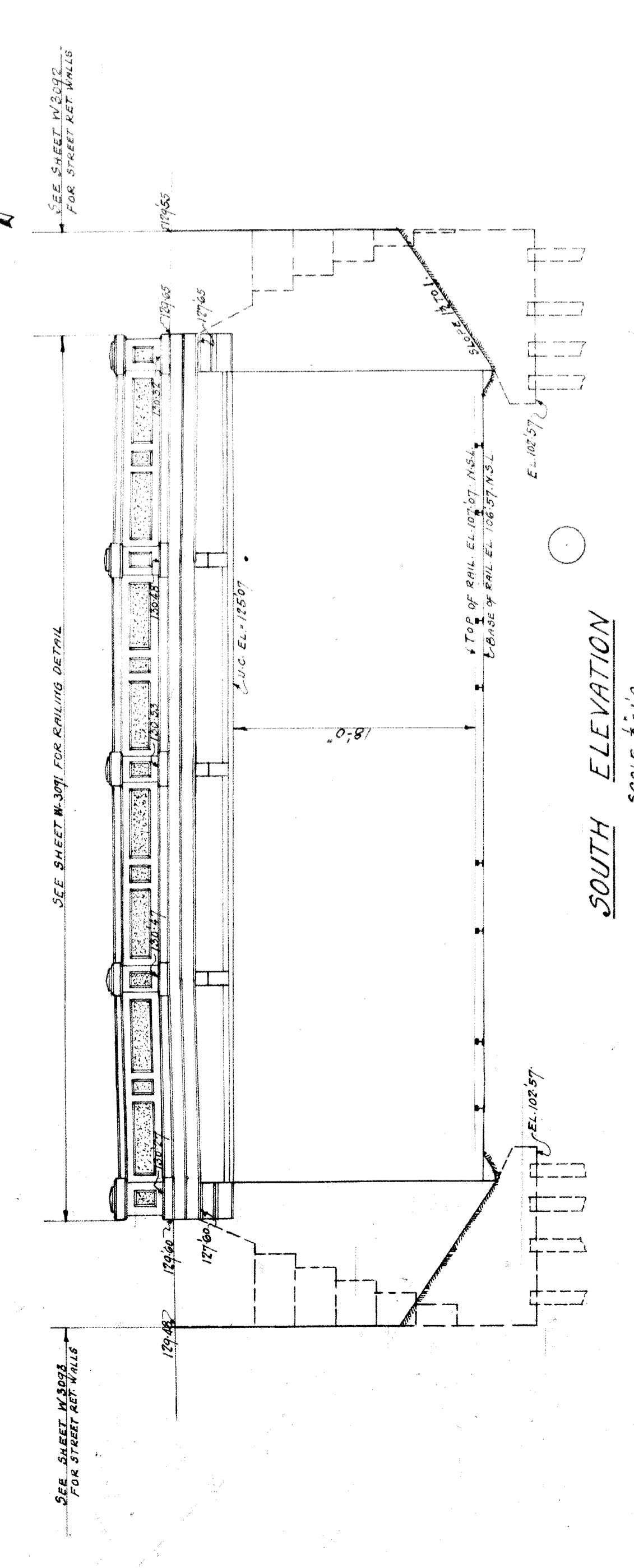
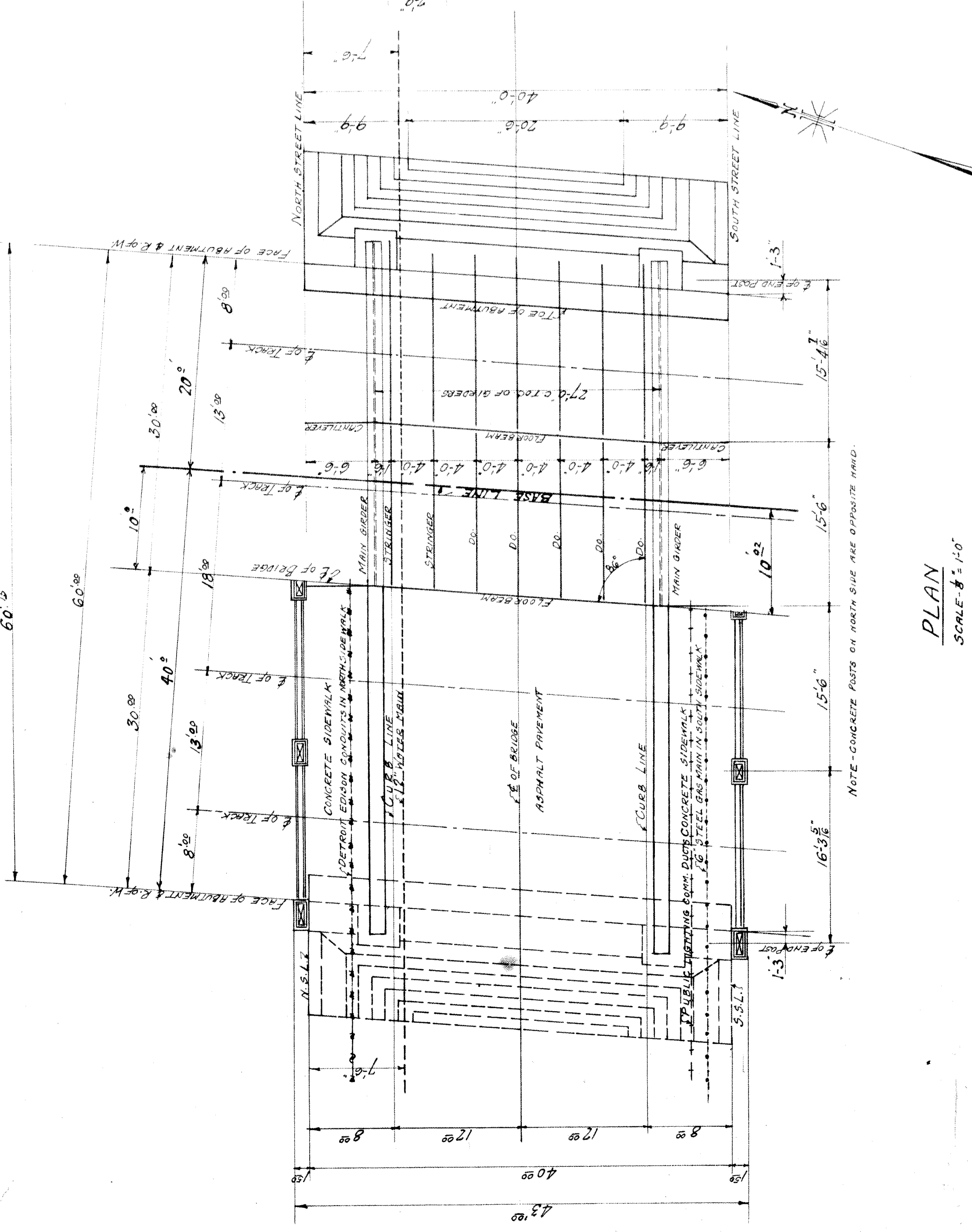
APPROVED: *[Signature]*
 City Engineer

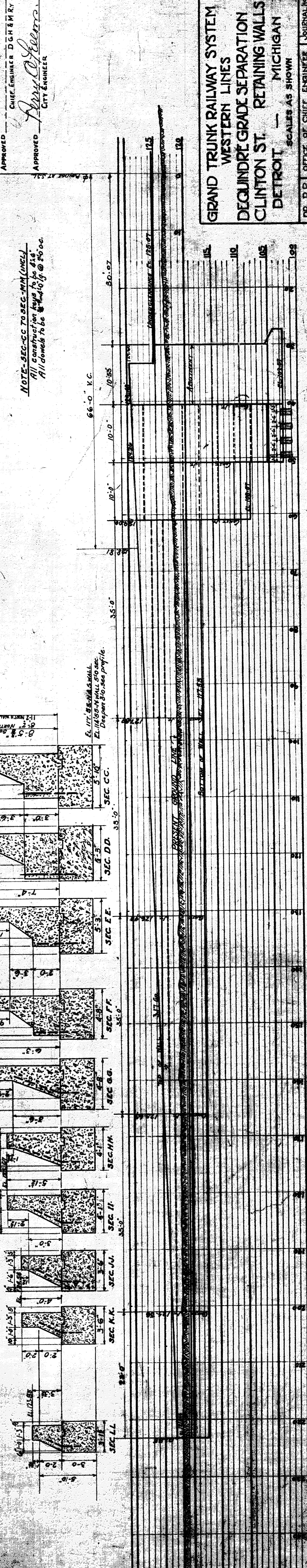
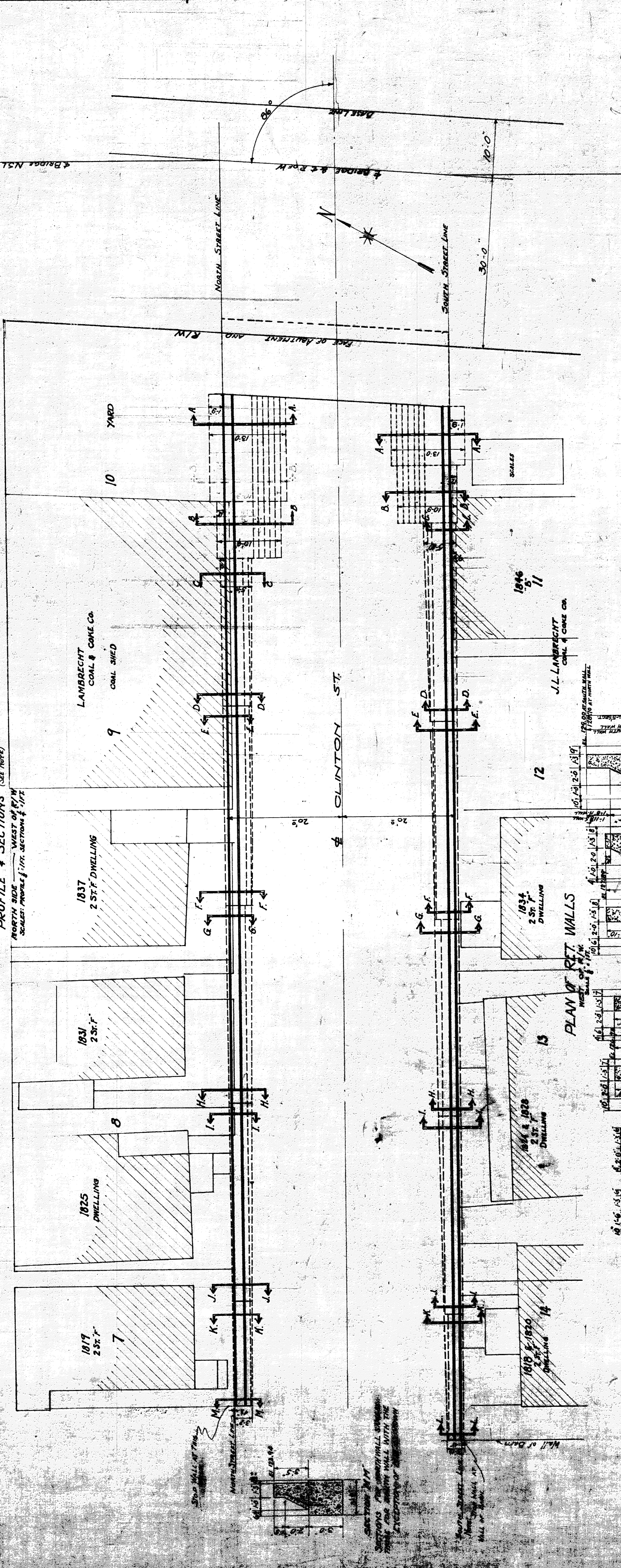
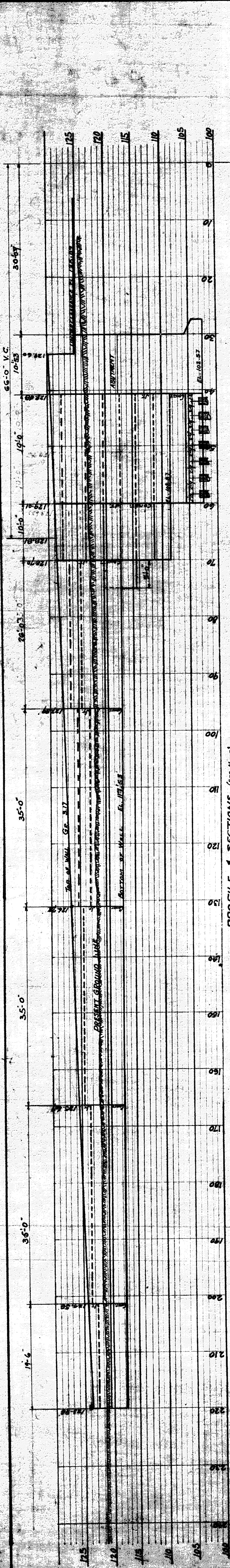
DR. E.J.W. OFFICE OF CHIEF ENGINEER
 TR. M.A.B. DETROIT, MICHIGAN.
 CH. M.J.B. FEB. 8, 1926.

JOURNALING
 W. 3088
 FILE 23A-98



Approved
Chief Engineer D.H. Wiley
Approved
City Engineer
[Signature]





GRAND TRUNK RAILWAY SYSTEM
 WESTERN LINES
 DEQUINDRE GRADE SEPARATION
 CLINTON ST. RETAINING WALLS
 DETROIT — MICHIGAN

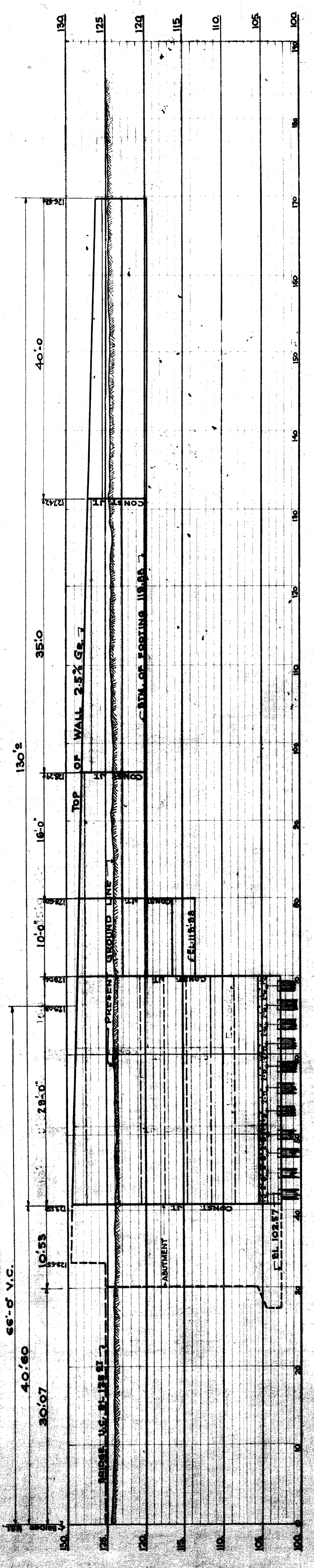
APPROVED CHIEF ENGINEER D. G. HENRY
 APPROVED J. J. LAMBRICHT
 CITY ENGINEER

NOTE: SEC. CC TO SEC. VII (INCL.)
 All construction to be in accordance with the plans and specifications on file at the office of the Chief Engineer, Detroit, Michigan.

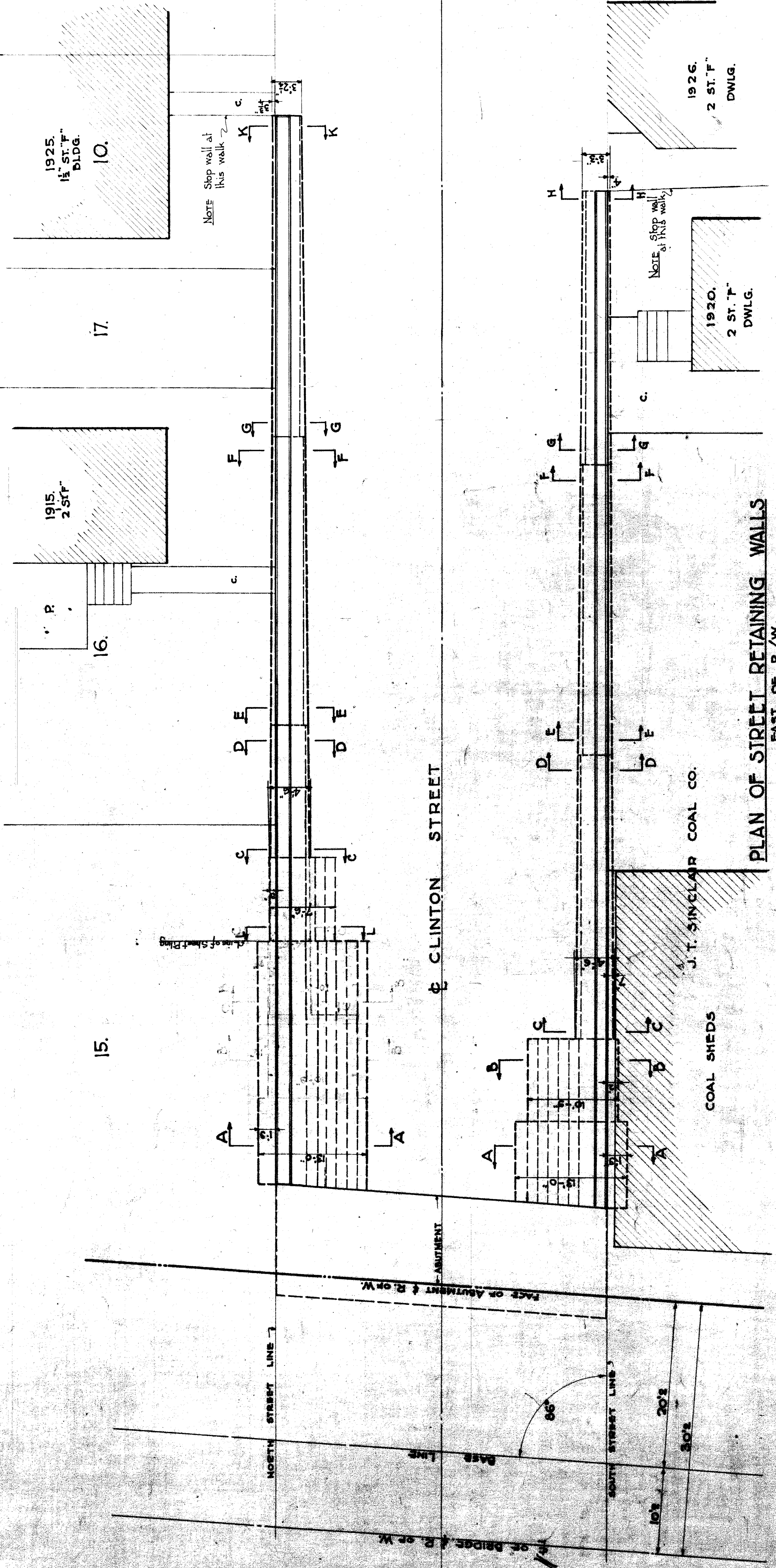
SCALE AS SHOWN
 OFFICE OF CHIEF ENGINEER
 DETROIT, MICHIGAN
 APRIL 1915
 JOURNAL NO. 10037
 TR. MAPS
 CH. 1015

PROFILE & SECTIONS
 SOUTH SIDE
 (See Note)

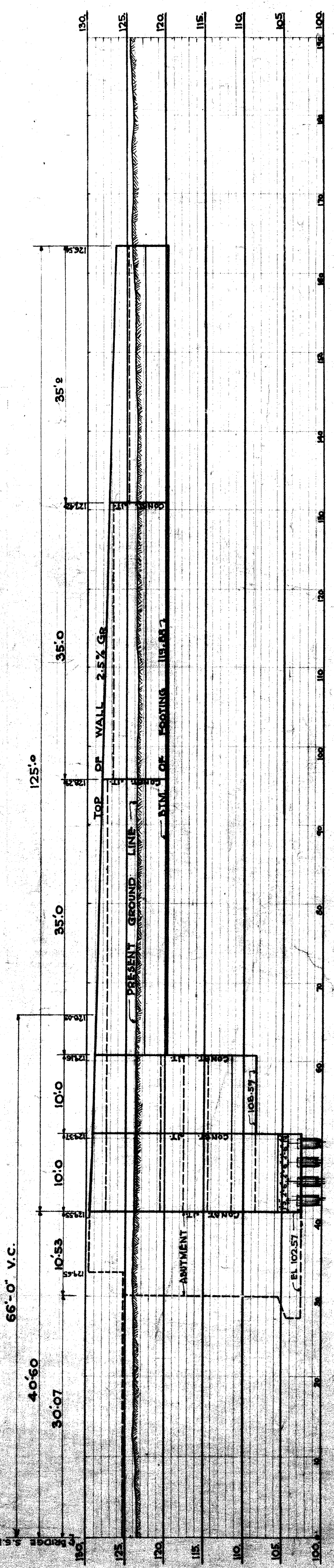
523-8-97



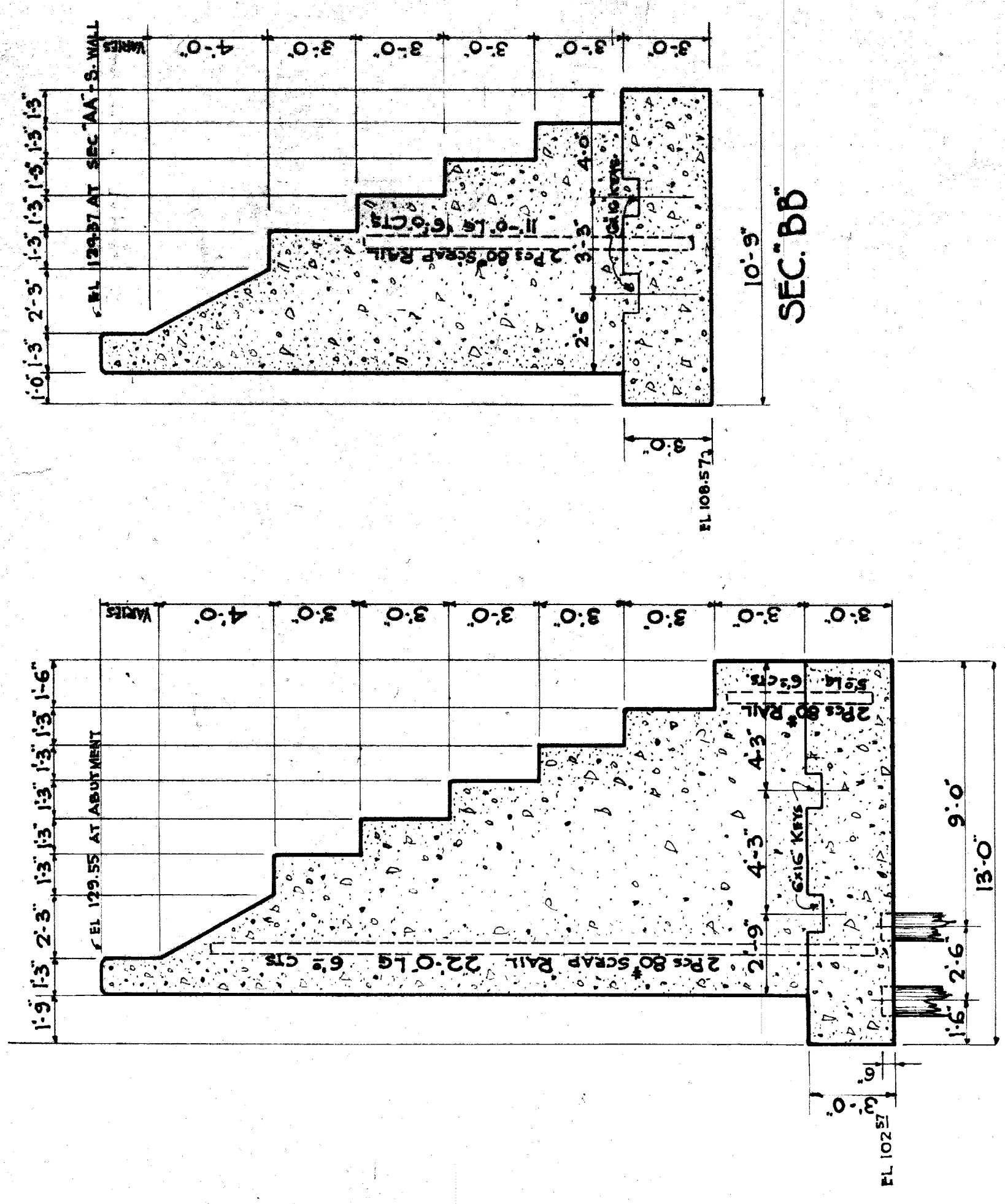
ELEVATION OF NORTH WALL
EAST OF R/W
SCALE 1/4" = 1'-0"



PLAN OF STREET RETAINING WALLS
EAST OF R/W
SCALE 1/4" = 1'-0"

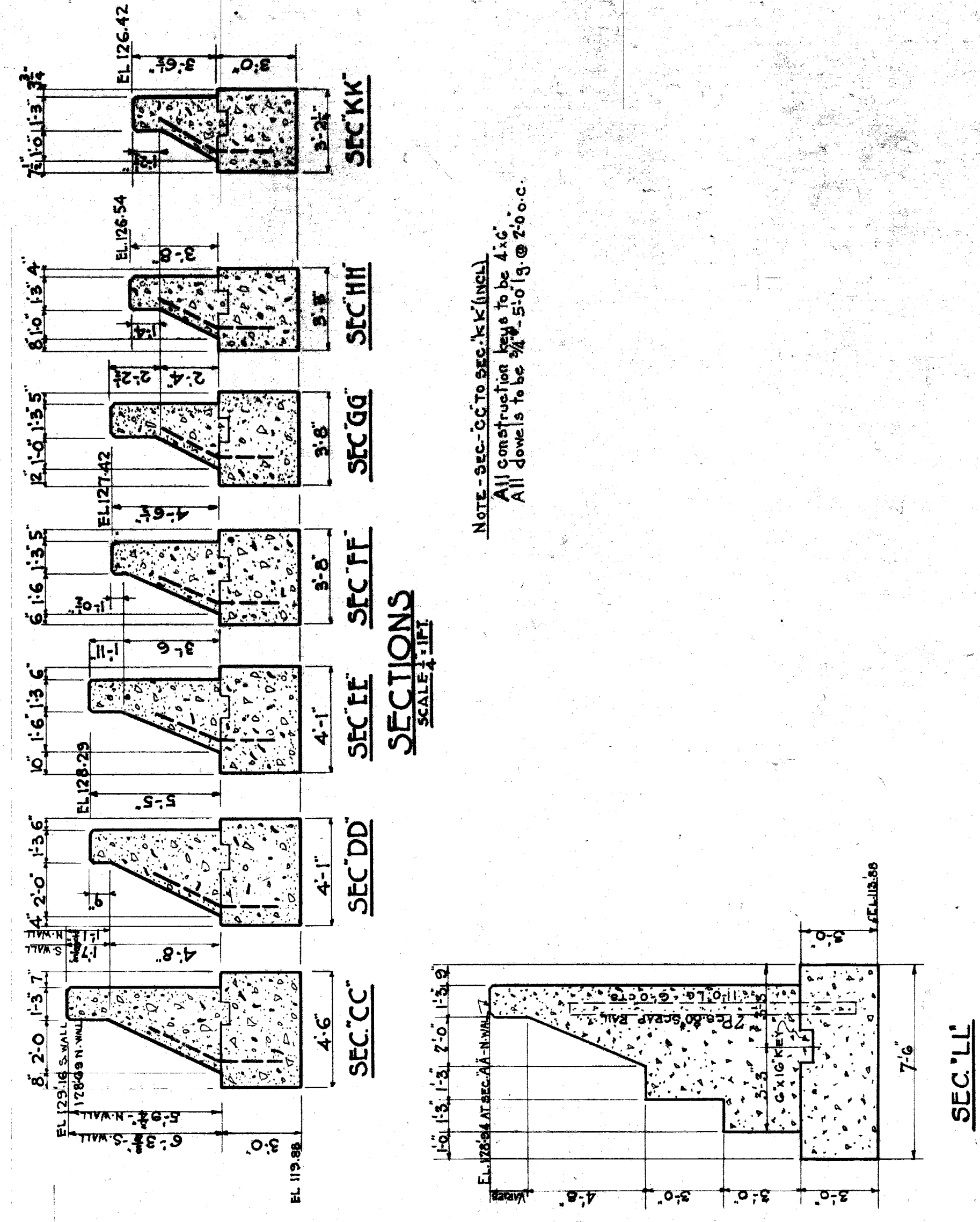


ELEVATION OF SOUTH WALL
EAST OF R/W
SCALE 1/4" = 1'-0"



SEC. AA

SEC. BB



SECTIONS
SCALE 1/4" = 1'-0"

NOTE: SEC. C TO SEC. K (IN WALL)
ALL CONSTRUCTION SHALL BE 4" C.
ALL DIMENSIONS SHALL BE 5/8" @ 20" C.

SEC. LL

Approved *[Signature]*
Chief Engineer D.G.H.M.B.
City Engineer

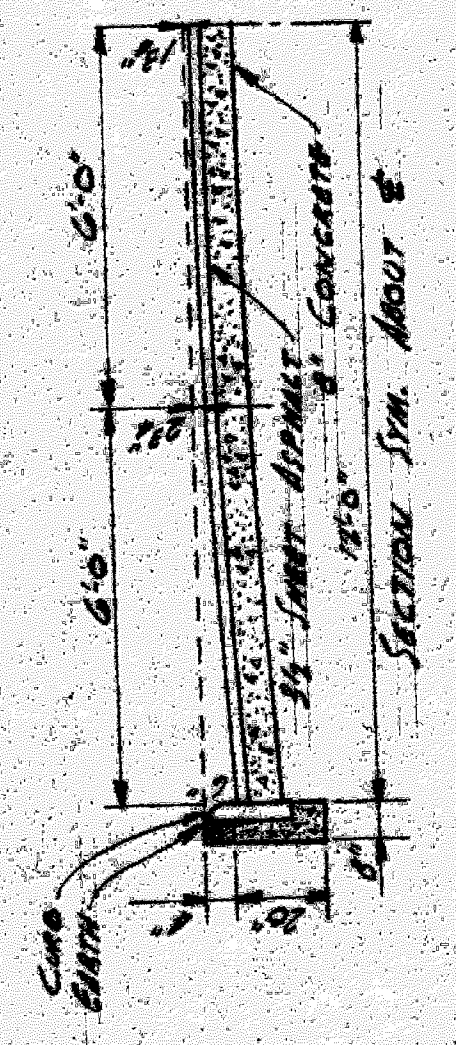
GRAND TRUNK RAILWAY SYSTEM
WESTERN LINES
DEQUINDRE GRADE SEPARATION
DETROIT MICHIGAN
CLINTON ST. RETAINING WALLS
SCALE AS SHOWN

DR. DR. OFFICE OF CHIEF ENGINEER
TR. R.W. DETROIT MICHIGAN
CH. M.B. APRIL 12 1926
J.M.R. W-5095
P.L.S.

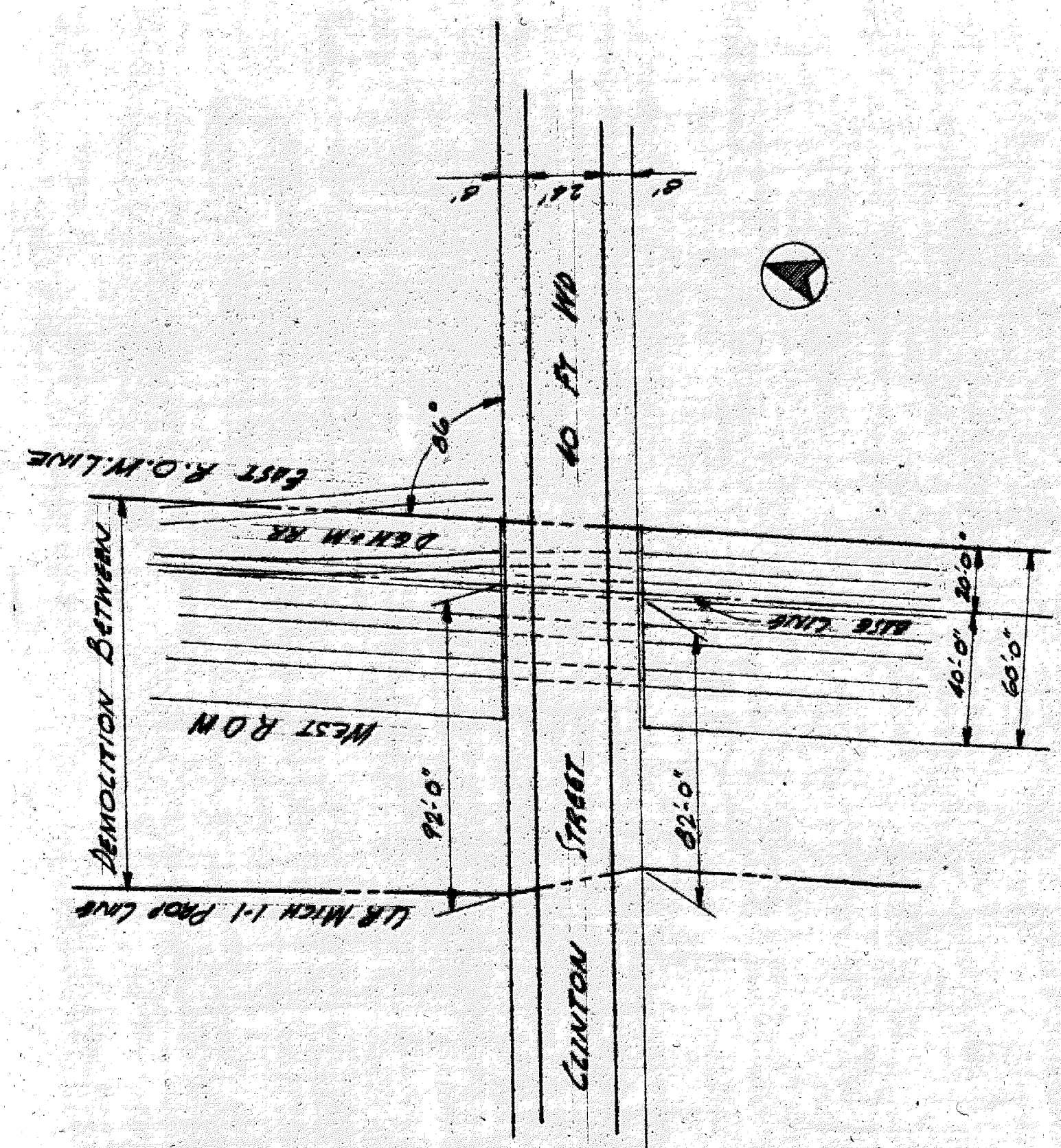
11
10
9
8
7
6
5
4
3
2
1



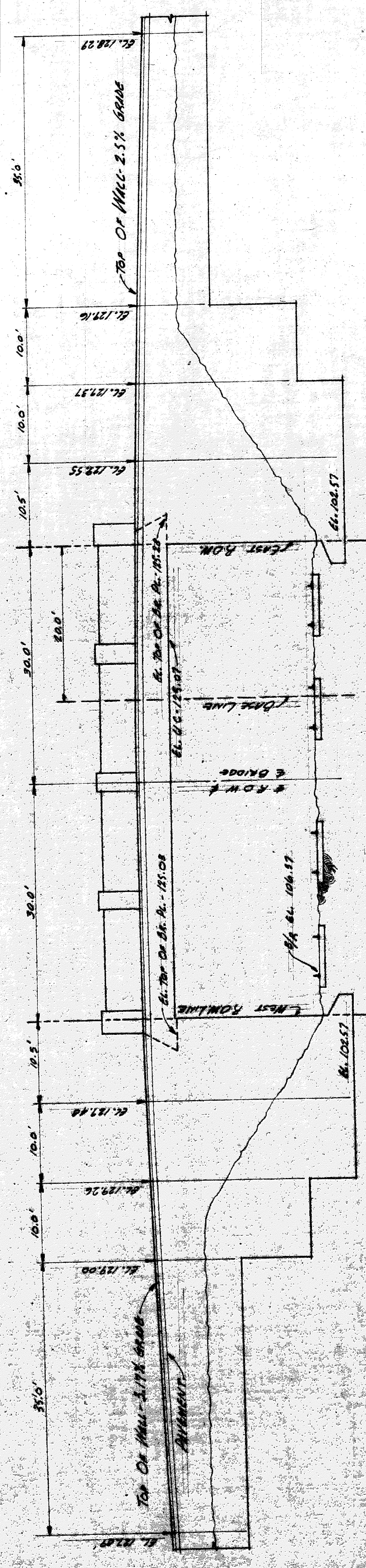
HALF SECTION THRU BRIDGE DECK
Scale - 1/4" = 1'-0"



HALF SECTION THRU PIER
Scale - 1/4" = 1'-0"



LOCATION PLAN
Scale - 1/4" = 40'-0"



ELEVATION OF SOUTH MILLS
Scale - 1/8" = 1'-0"

XO-75

SHEET 2 OF 5 SHEETS		CONTRACT NO. HS-1		DRWG NO. S-5		DATE AUG. 1957	
DEMOLITION OF HIGHWAY BRIDGES				CLINTON STREET BRIDGE			
CITY OF DETROIT				DETROIT HOUSING COMMISSION			
DEPARTMENT OF PUBLIC WORKS				CITY ENGINEERS OFFICE			
DESIGNED BY E. Mitchell		DRAWN BY M. Smith		TRACED BY M. Smith		CHECKED BY E. Mitchell	
APPROVED R. D. Johnson		ARCH. ENGR. C. D. Johnson		ASST. CITY ENGR. J. P. Johnson		CITY ENGINEER	