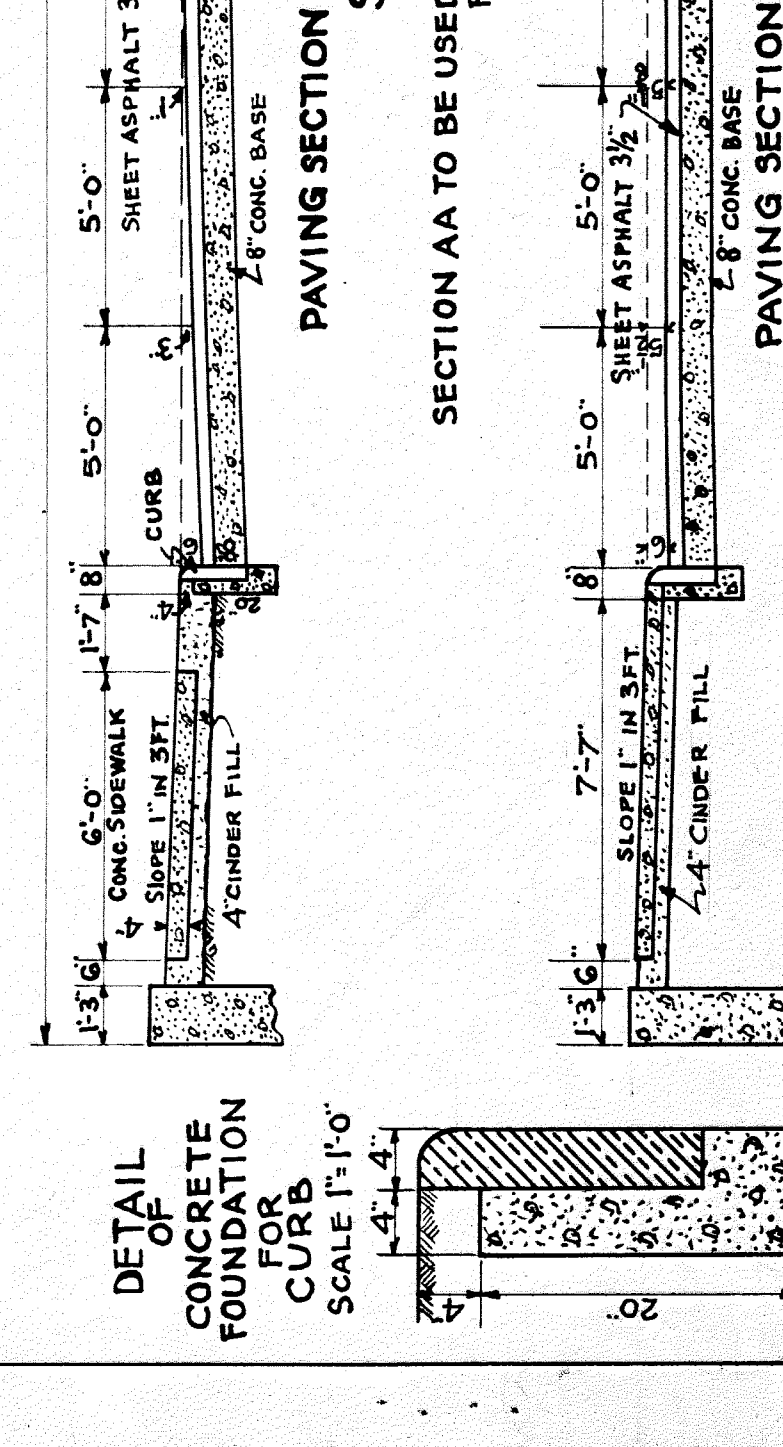
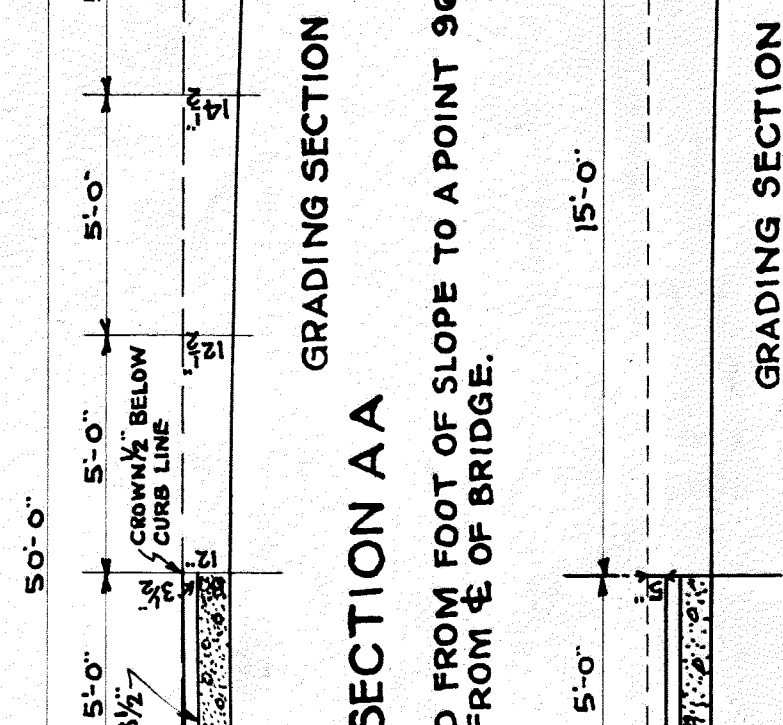
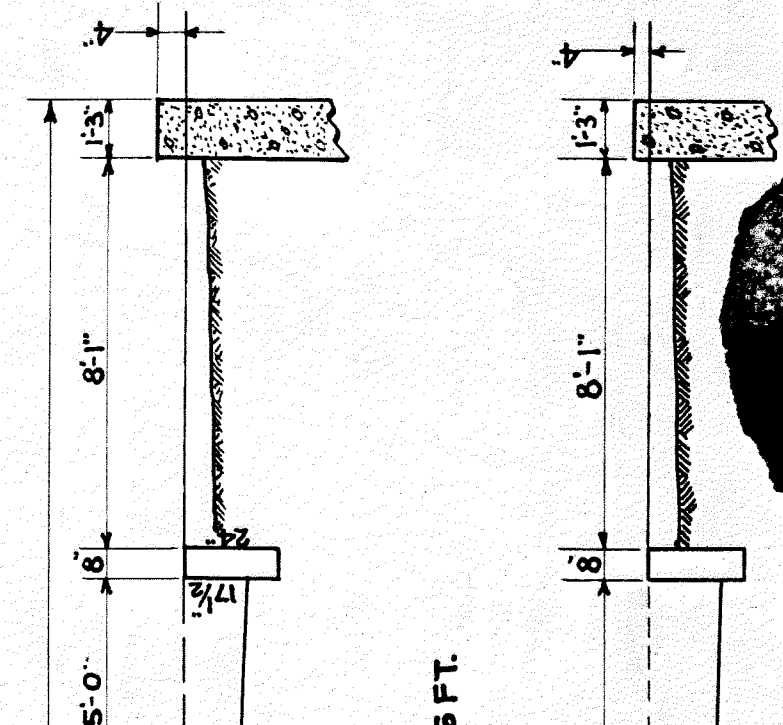
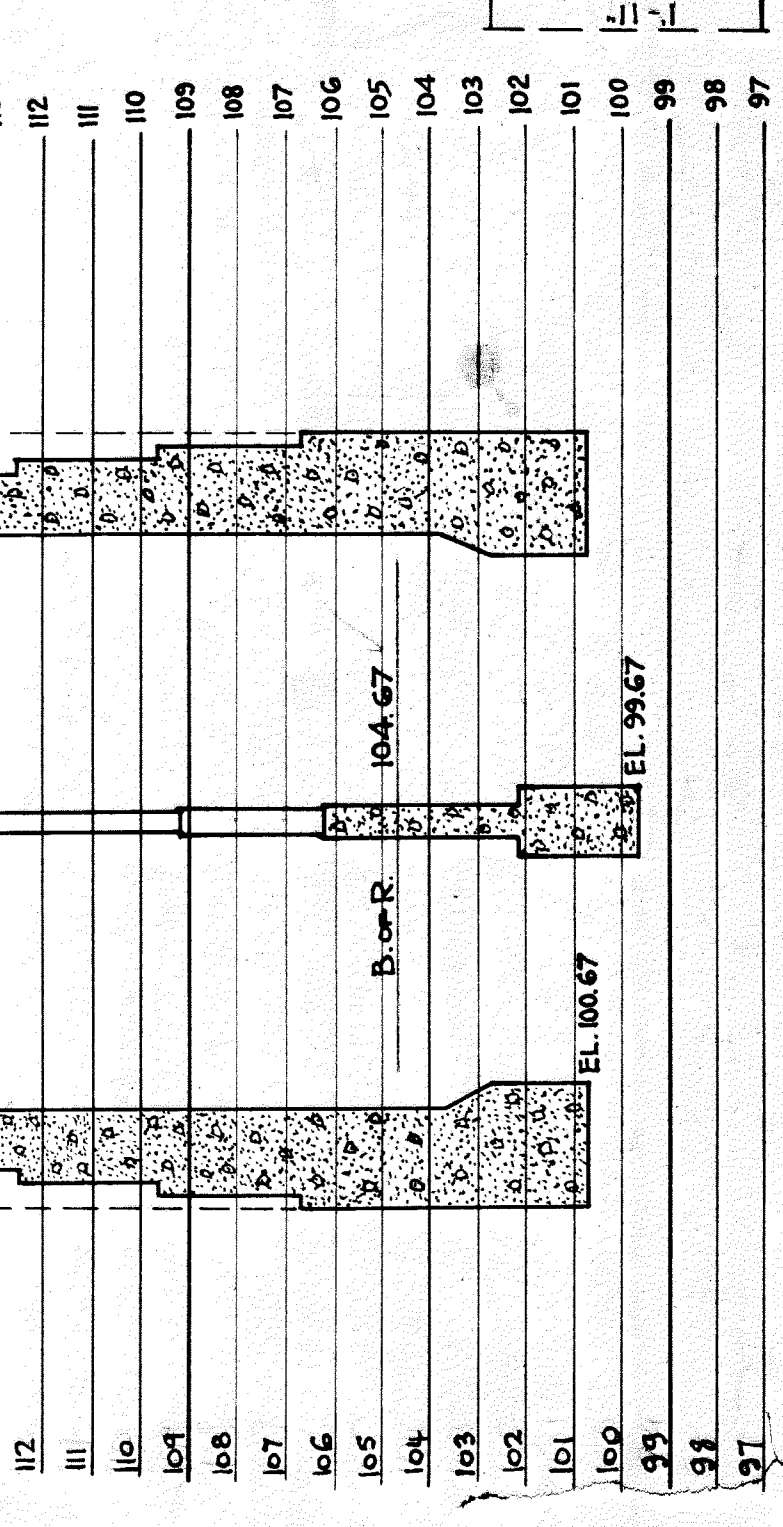
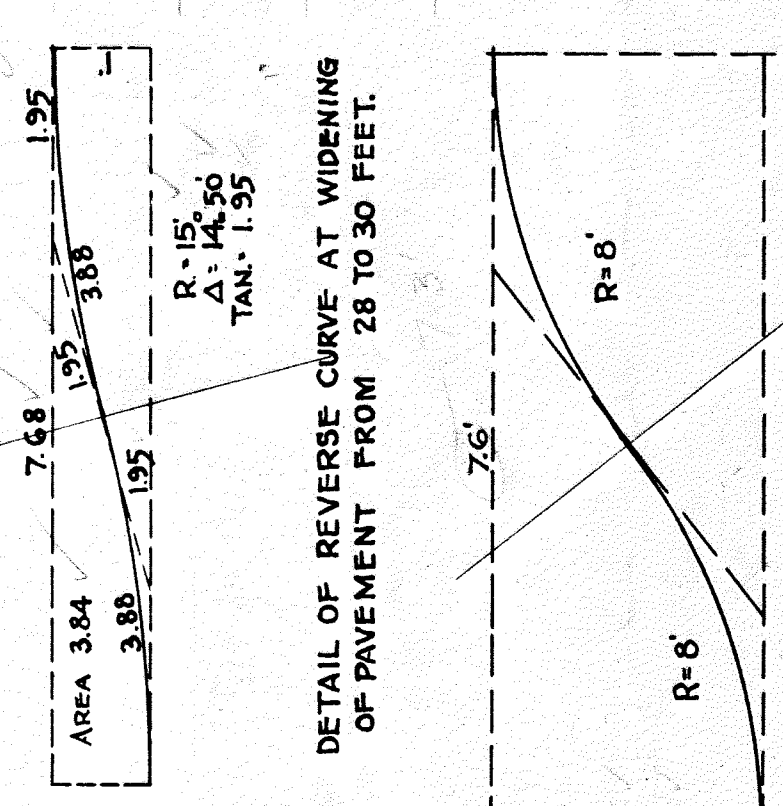
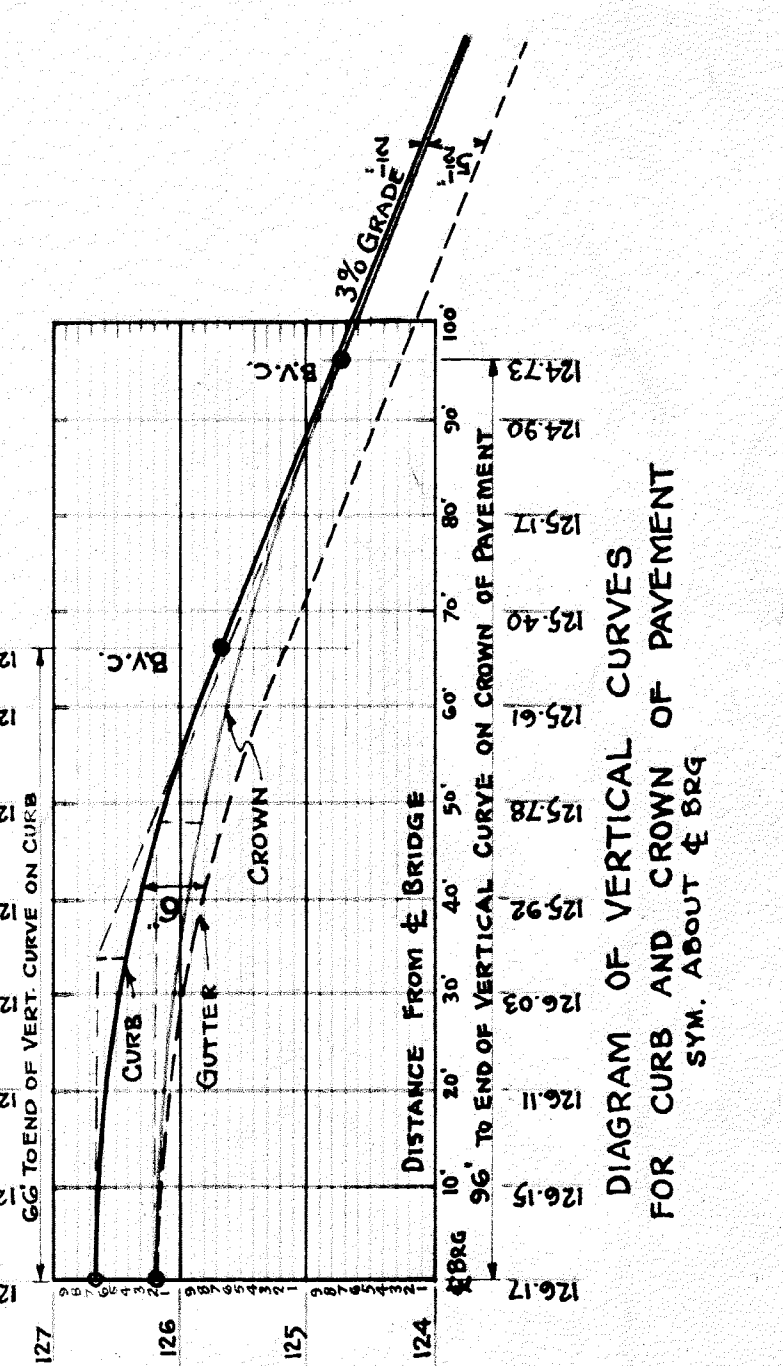


APPROVED: *[Signature]*  
 CHIEF ENGINEER DGH & M RY  
 APPROVED: *[Signature]*  
 CITY ENGINEER

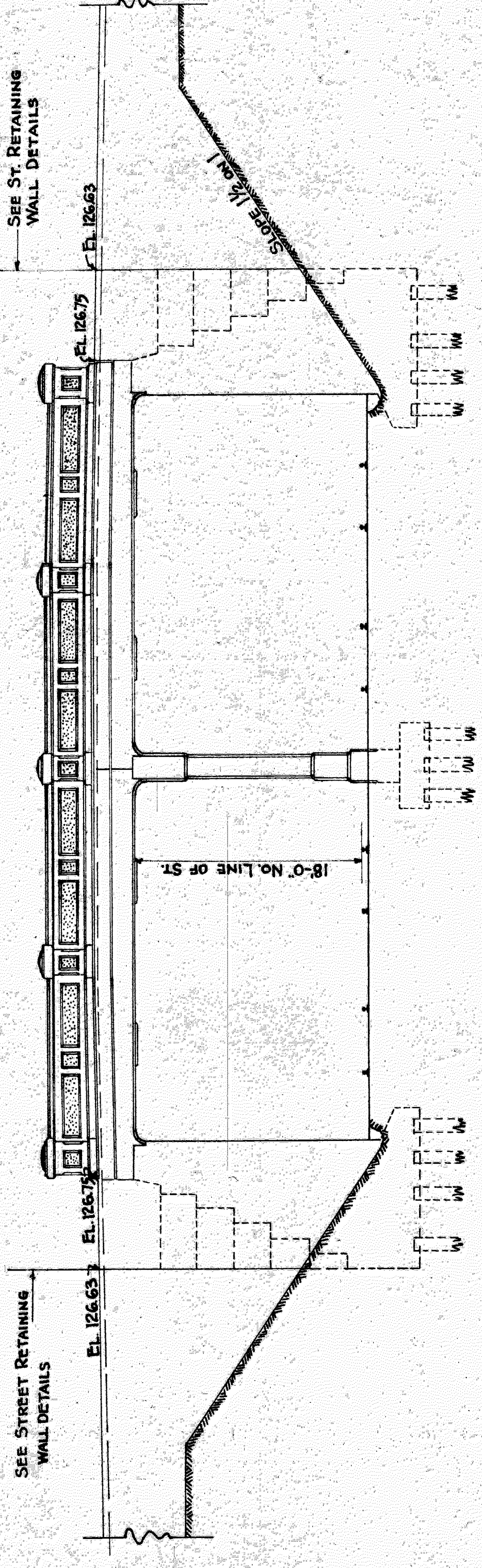
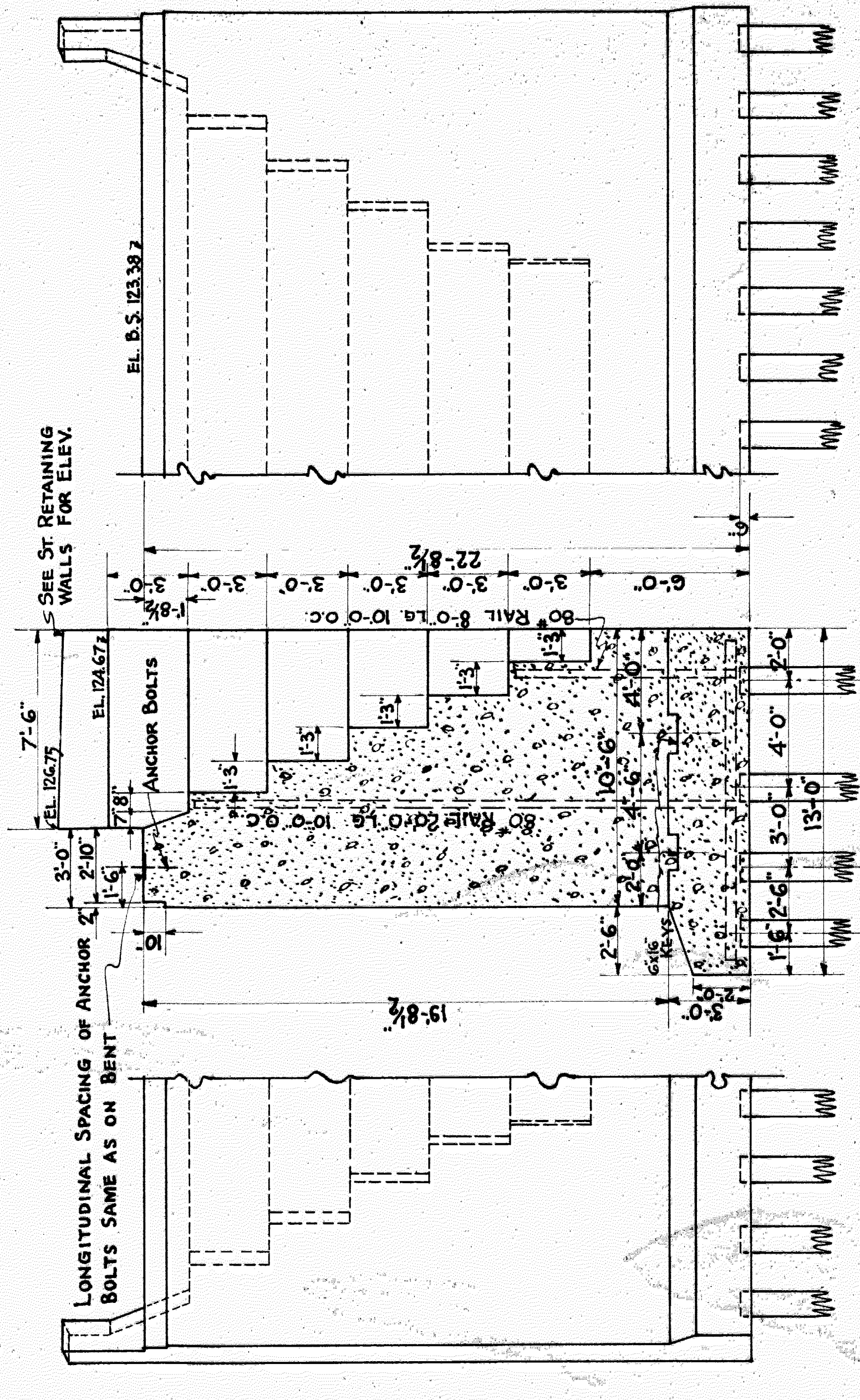
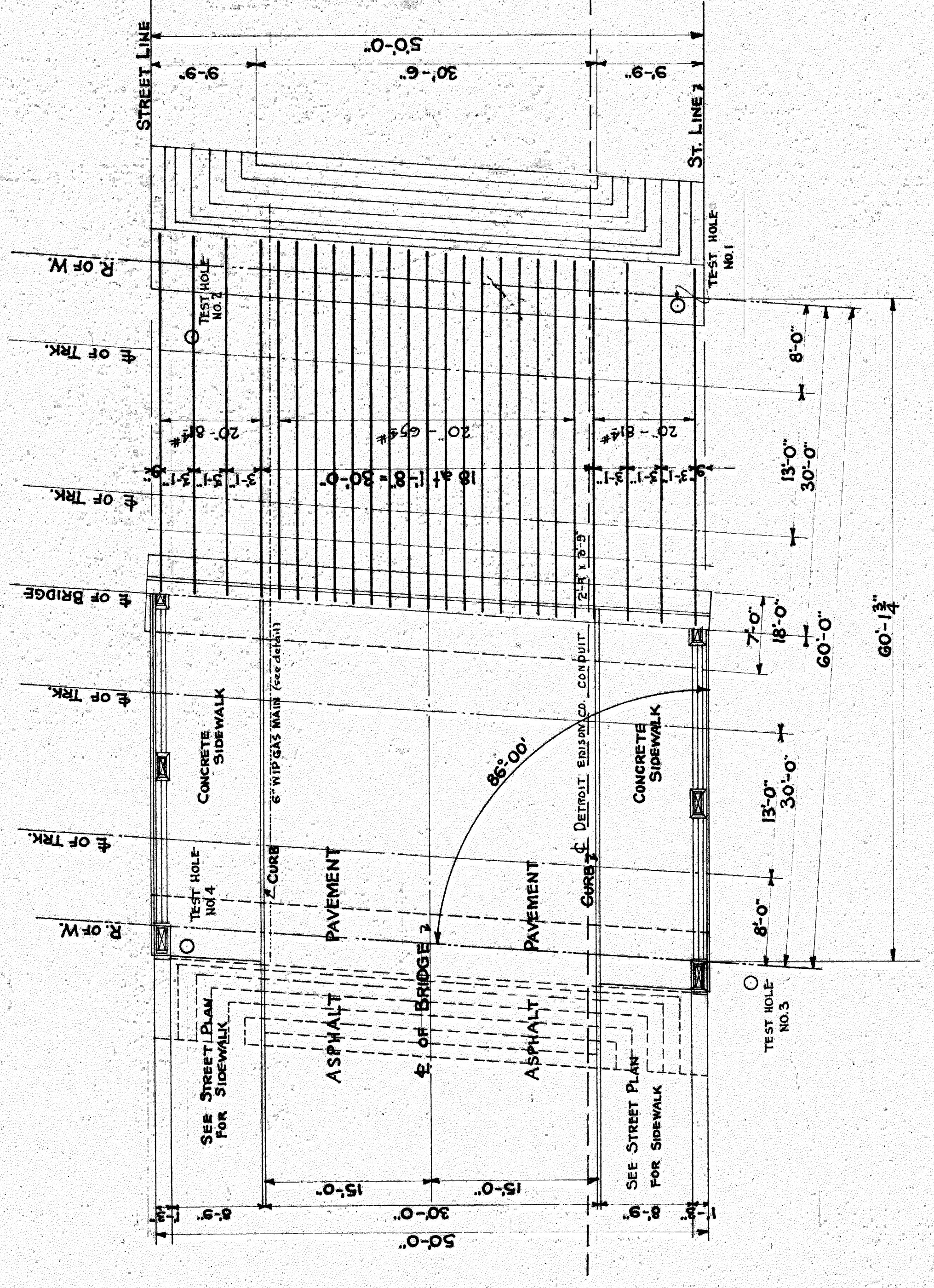
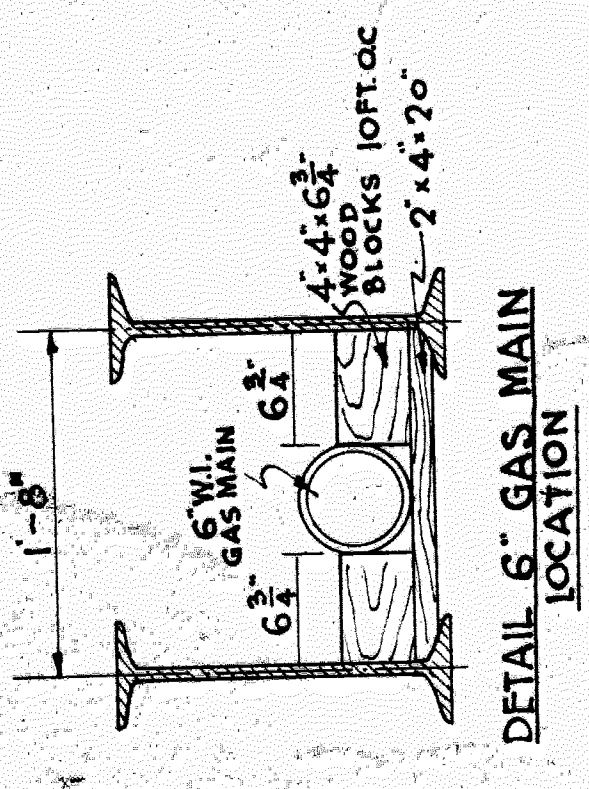
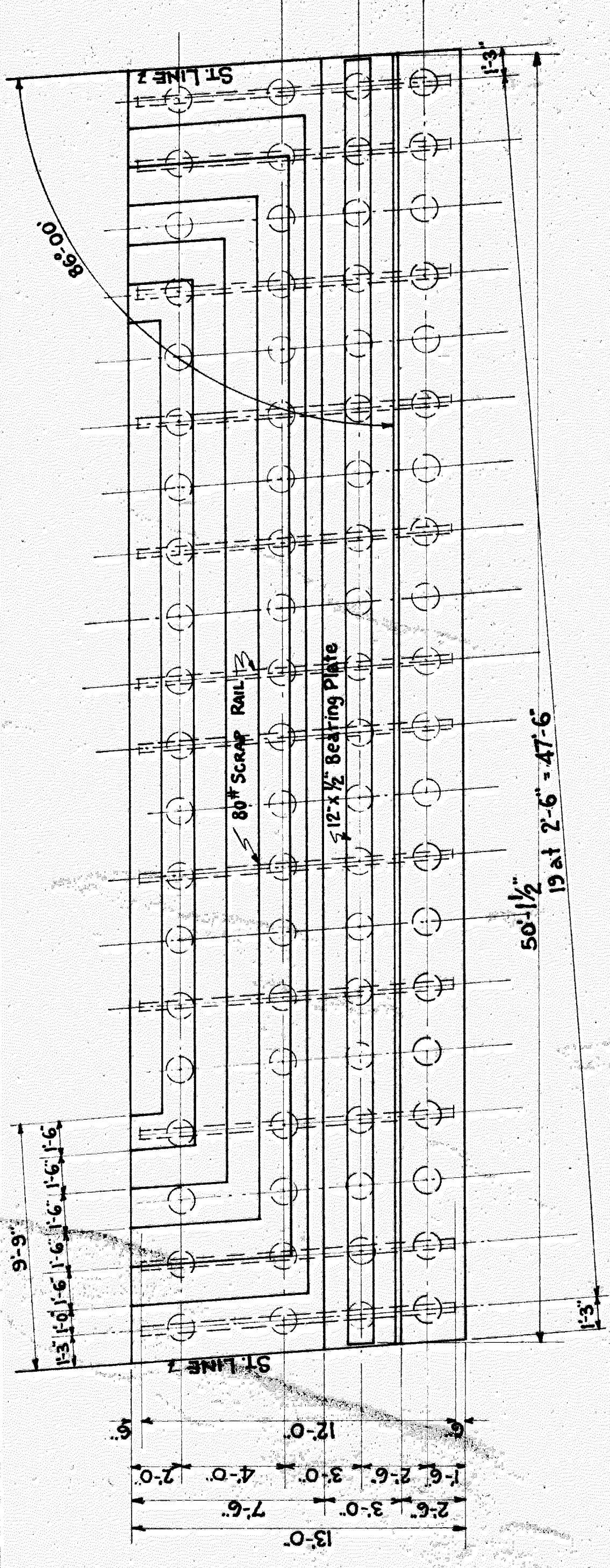
GRAND TRUNK RAILWAY SYSTEM  
 WESTERN LINES  
 DEQUINDRE GRADE SEPARATION  
 DETROIT MICHIGAN  
 GENERAL PLAN MACOMB STREET  
 SCALE 1" = 20 FT.  
 JOURNAL NO. W3071



SECTION AA TO BE USED FROM FOOT OF SLOPE TO A POINT 96 FT. FROM  $\nabla$  OF BRIDGE.

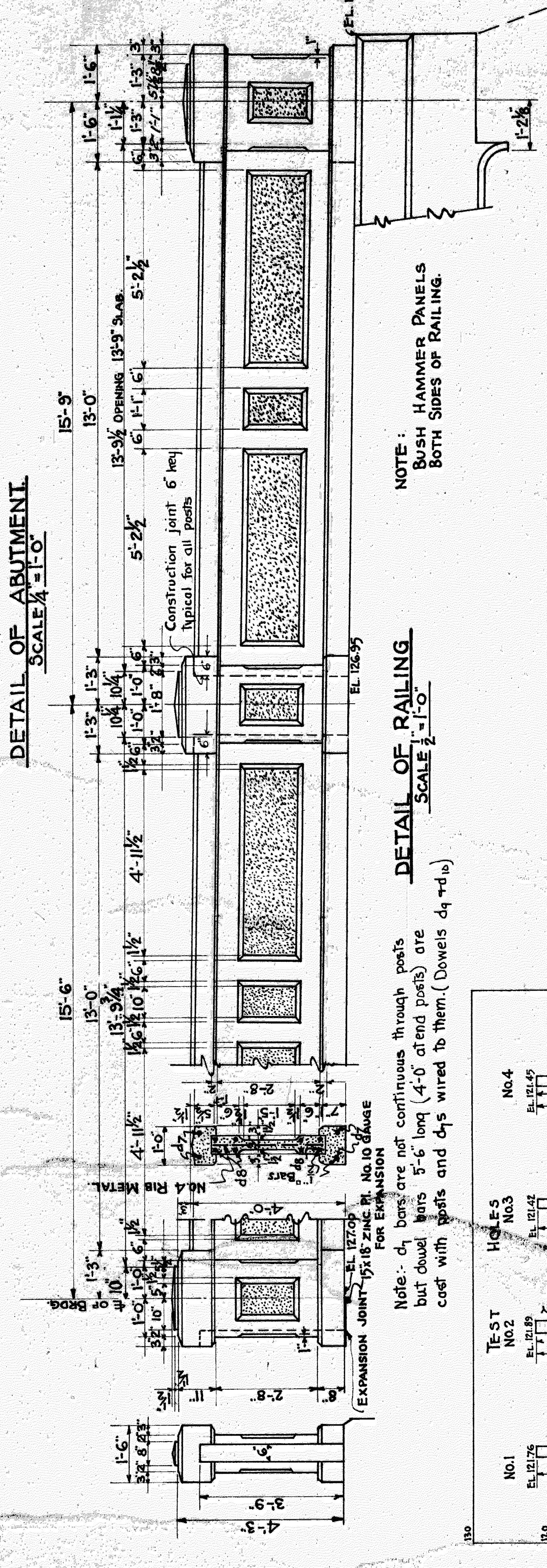
SECTION BB TO BE USED FROM FOOT OF SLOPE TO A POINT 96 FT. FROM  $\nabla$  OF BRIDGE.





DETAIL OF ABUTMENT  
SCALE 1/4" = 1'-0"

SOUTH SIDE ELEVATION  
SCALE 1/4" = 1'-0"



DETAIL OF RAILING  
SCALE 1/2" = 1'-0"

NOTE:  
RUSH HAMMER PANELS  
BOTH SIDES OF RAILING.

Note: ch. bars are not continuous through posts but dowel bars 5'-6" long (4'-0" extend posts) are cast with posts and chs wired to them. (Dowels ch 4 + 1 b)

| TEST  | HOLE       | NO. | DEPTH  | SOIL                  | REMARKS |
|-------|------------|-----|--------|-----------------------|---------|
| NO. 1 | HOLE NO. 1 | 10  | 7'-0"  | SOFT BLUE CLAY        |         |
|       |            | 11  | 12'-0" | MEDIUM SOFT BLUE CLAY |         |
| NO. 2 | HOLE NO. 2 | 12  | 7'-0"  | BLUE CLAY             |         |
|       |            | 13  | 13'-0" | MEDIUM SOFT BLUE CLAY |         |
| NO. 3 | HOLE NO. 3 | 14  | 9'-0"  | MEDIUM SOFT BLUE CLAY |         |
|       |            | 15  | 15'-0" | MEDIUM SOFT BLUE CLAY |         |
| NO. 4 | HOLE NO. 4 | 16  | 13'-0" | MEDIUM SOFT BLUE CLAY |         |
|       |            | 17  | 17'-0" | MEDIUM SOFT BLUE CLAY |         |

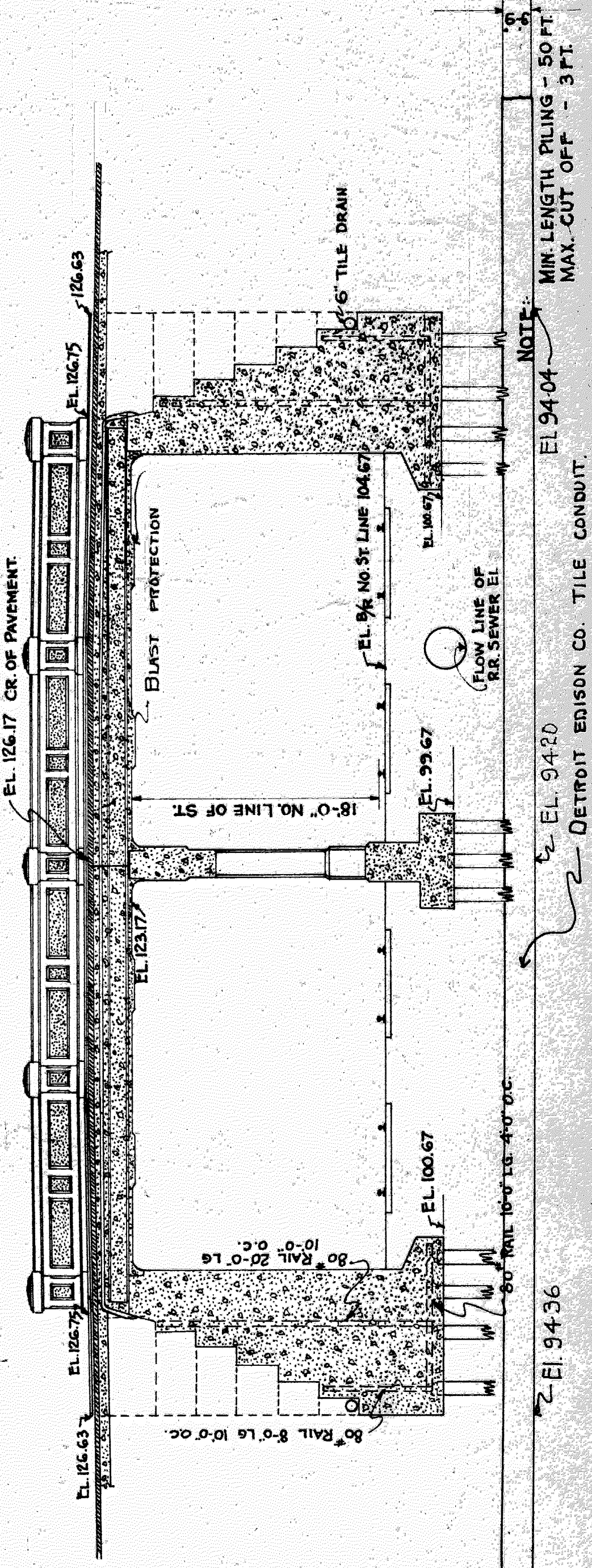
GRAND TRUNK RAILWAY SYSTEM  
WESTERN LINES  
DEQUINDE GRADE SEPARATION  
DETROIT, MICHIGAN  
BRIDGE - - MACOMB STREET

APPROVED: *[Signature]*  
CHIEF ENGINEER DISTRICT

APPROVED: *[Signature]*  
CITY ENGINEER

MR. R.A.W. OFFICE OF CHIEF ENGINEER  
DETROIT, MICHIGAN  
CITY ENGINEER  
SCALE - AS SHOWN  
JOURNAL NO. W-2072  
FILE  
REVISED JUNE 3, 1935. Edison Co. Contract 1000

LONGITUDINAL SECTION  
SCALE 1/4" = 1'-0"



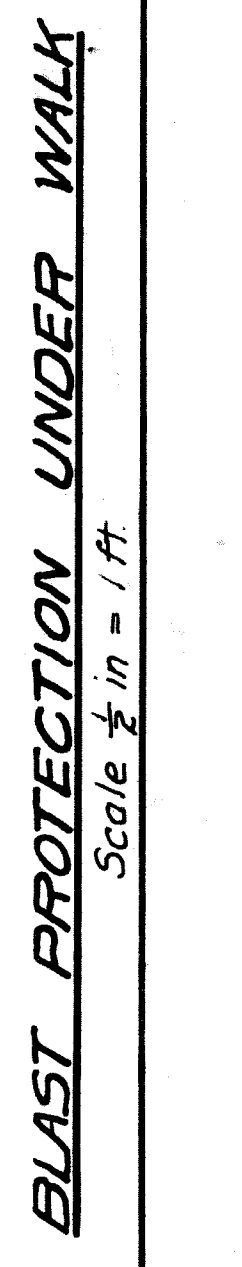
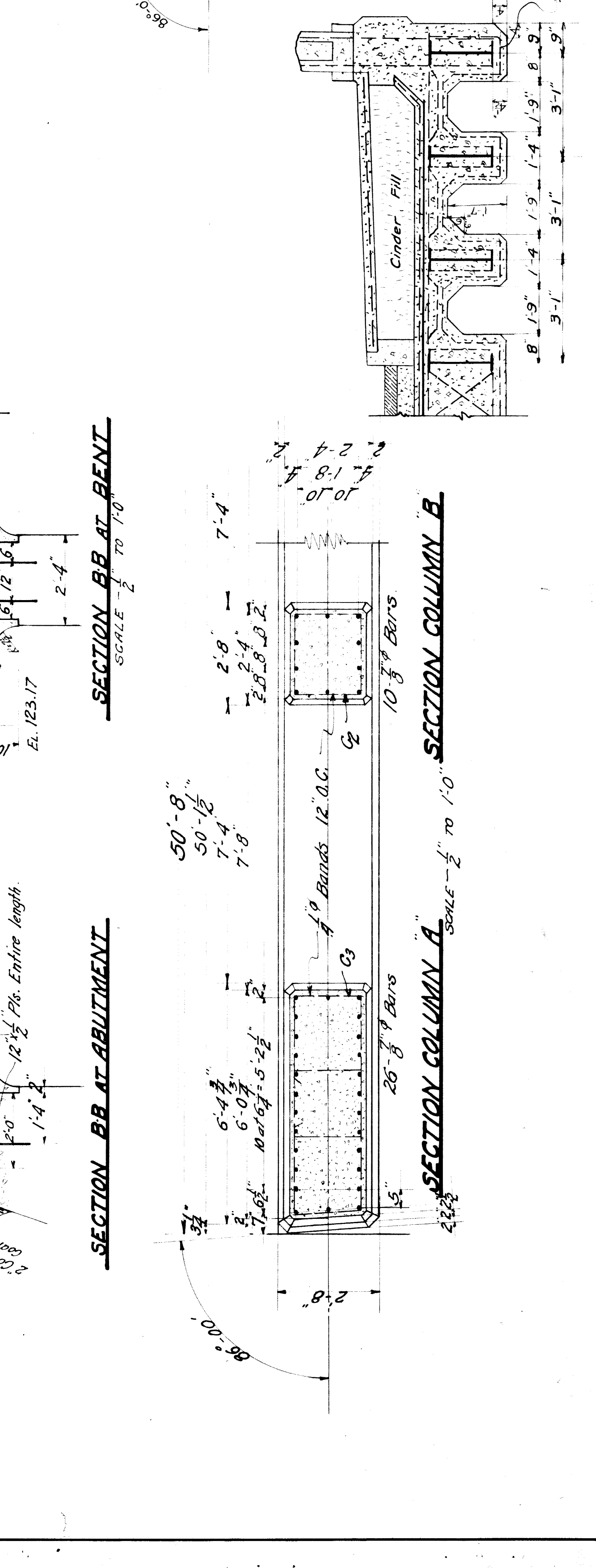
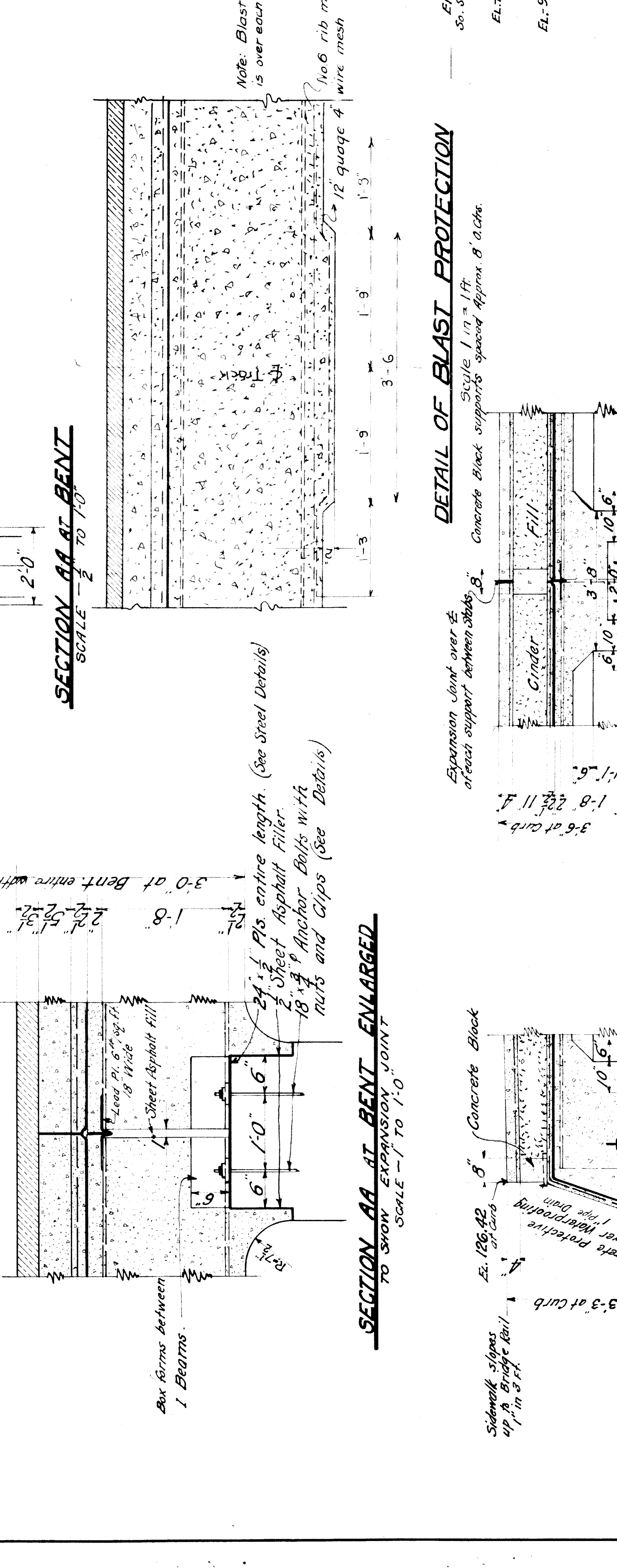
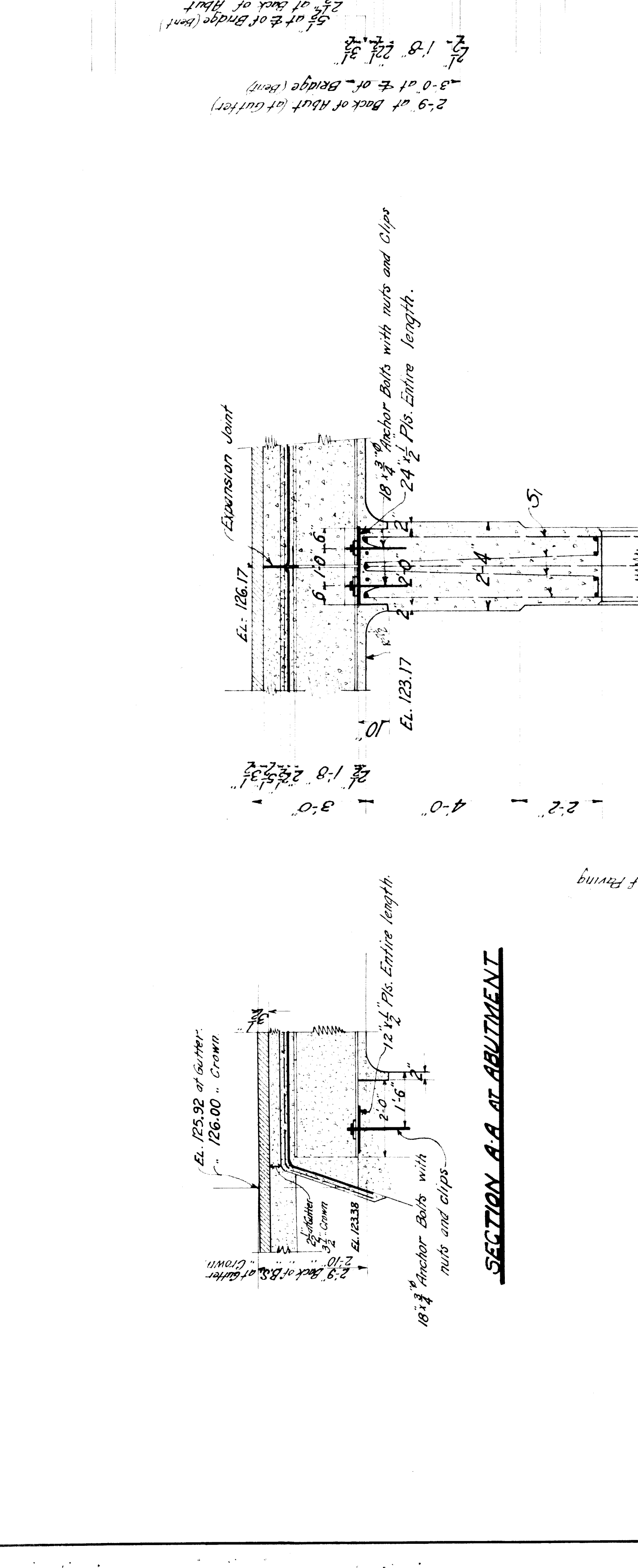
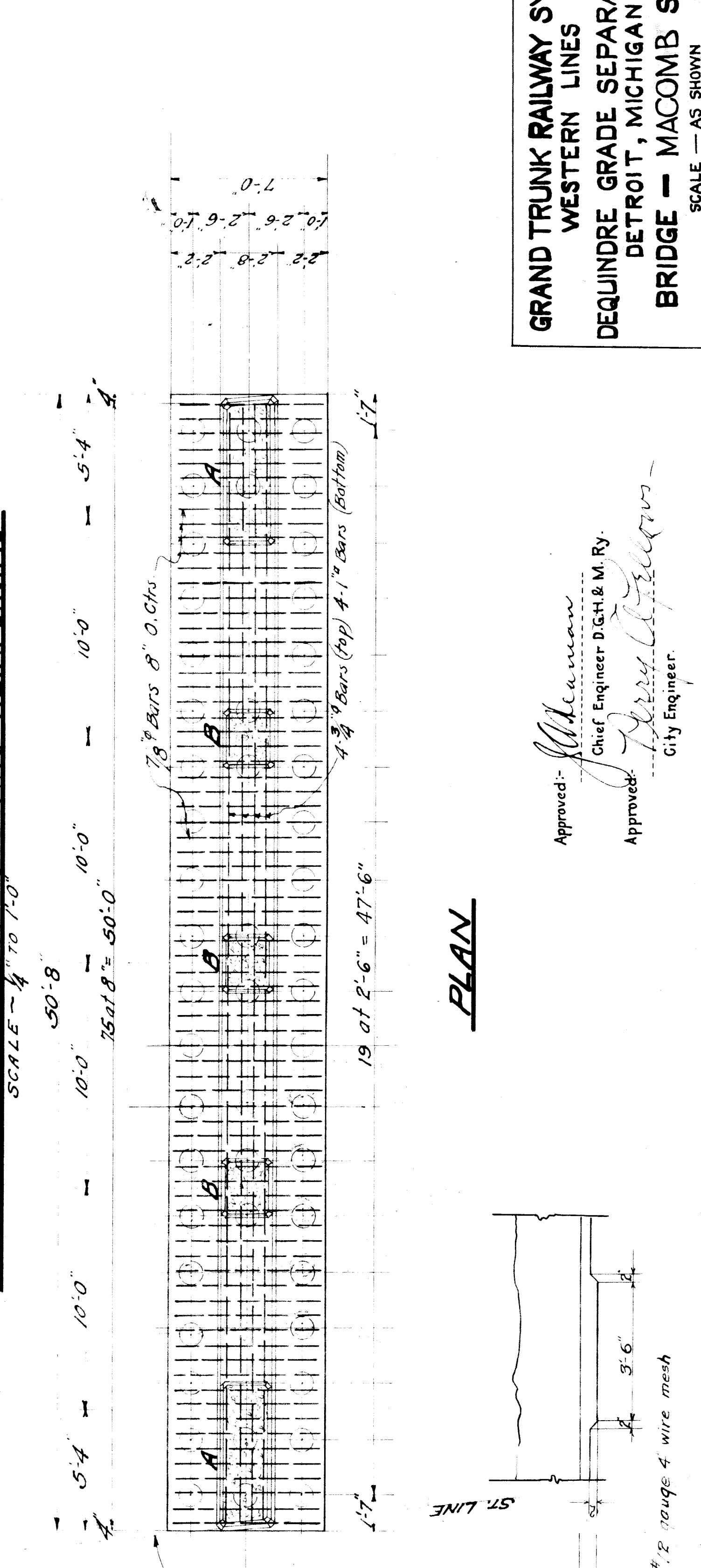
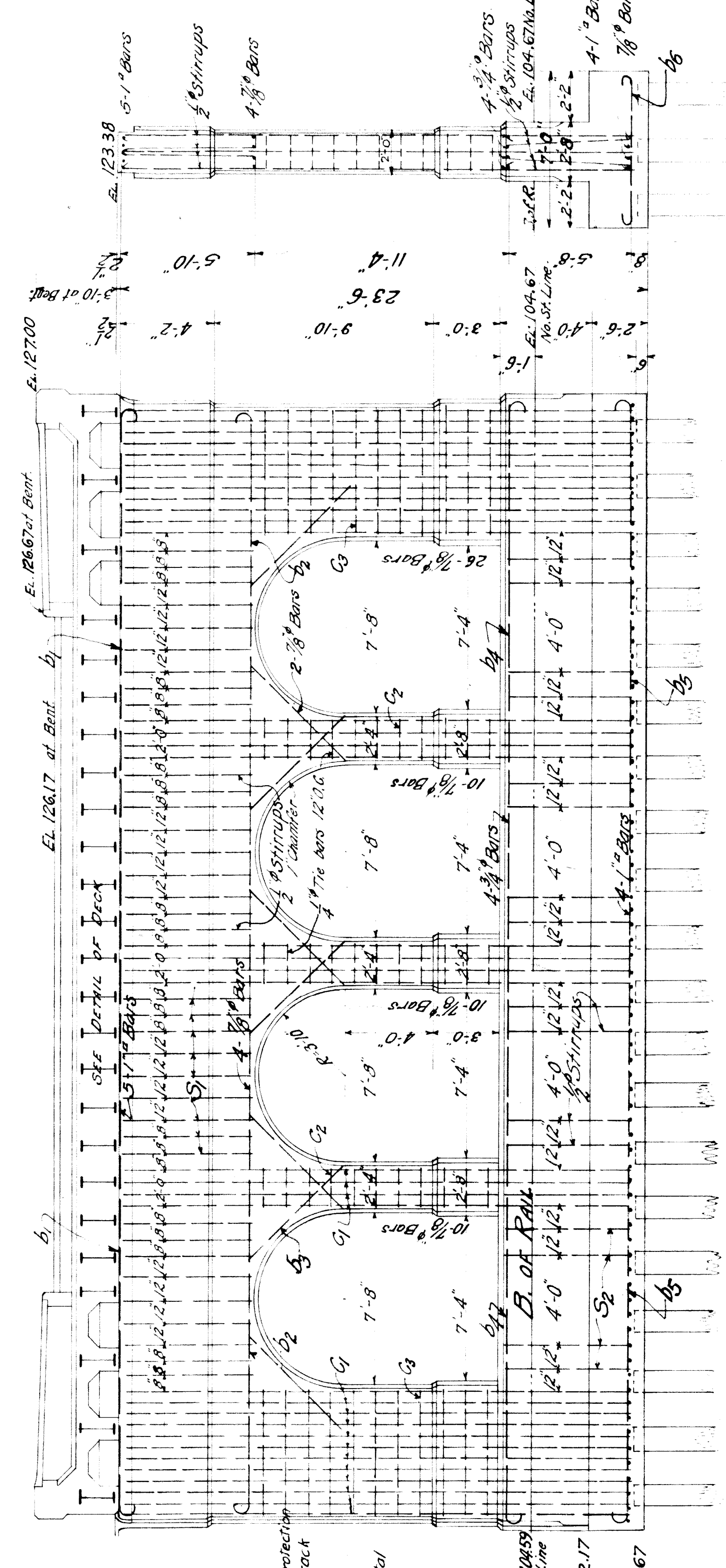
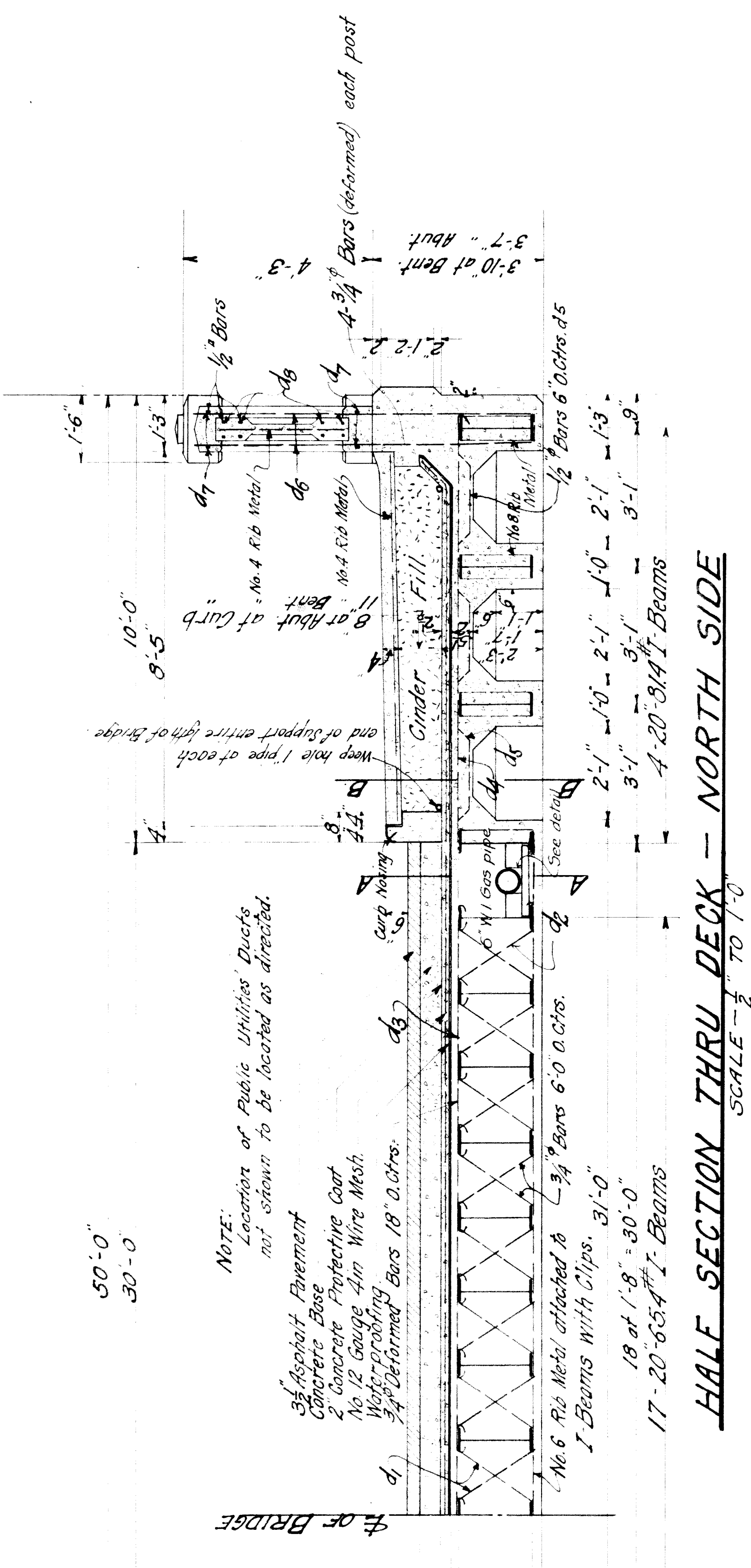
NOTE:  
MIN. LENGTH PLING - 50 FT.  
MAX. CUT OFF - 3 FT.

DETROIT EDISON CO. TILE CONDUIT.



Approved: *W. L. ...*  
 Chief Engineer D.C.H. & M. Ry.

Approved: *...*  
 City Engineer.



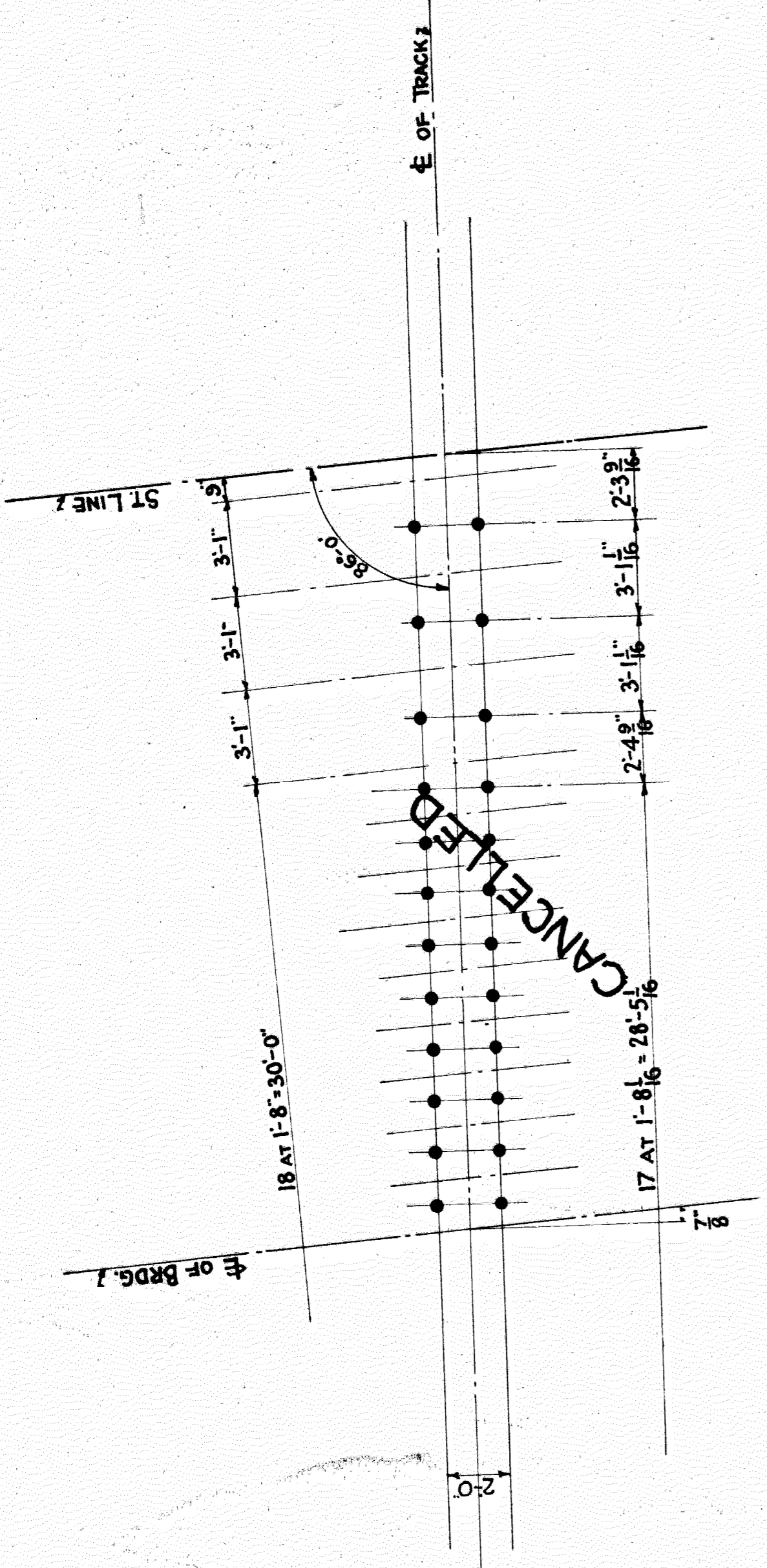


| BILL OF REINFORCING BARS            |     |                 | BENDING DIAGRAM |        |
|-------------------------------------|-----|-----------------|-----------------|--------|
| LOCATION                            | NO. | MARK            | SIZE            | LENGTH |
| DECK                                | 192 | d <sub>1</sub>  | 3/4"            | 7'-0"  |
| DECK                                | 24  | d <sub>2</sub>  | 3/4"            | 4'-0"  |
| DECK                                | 90  | d <sub>3</sub>  | 3/4"            | 17'-3" |
| DECK (SIDEWALK)                     | 90  | d <sub>4</sub>  | 3/4"            | 10'-5" |
| DECK (SIDEWALK)                     | 266 | d <sub>5</sub>  | 1/2"            | 11'-2" |
| DECK (FOR RAILING)                  | 40  | d <sub>6</sub>  | 3/4"            | 7'-0"  |
| RAILING (TOP AND BOTTOM)            | 32  | d <sub>7</sub>  | 1/2"            | 13'-8" |
| RAILING (WALK)                      | 64  | d <sub>8</sub>  | 1/2"            | 13'-6" |
| BENT (TOP)                          | 10  | b <sub>1</sub>  | 1"              | 30'-0" |
| BENT (TOP) ABOVE ARCHES             | 8   | b <sub>2</sub>  | 7/8"            | 28'-0" |
| BENT (OVER ARCH)                    | 8   | b <sub>3</sub>  | 7/8"            | 14'-0" |
| BENT (UNDER ARCH)                   | 8   | b <sub>4</sub>  | 3/4"            | 28'-0" |
| BENT (BOTTOM)                       | 8   | b <sub>5</sub>  | 1"              | 30'-0" |
| BENT (BOTTOM)                       | 76  | b <sub>6</sub>  | 7/8"            | 8'-6"  |
| BENT (COLUMN)                       | 82  | c <sub>1</sub>  | 7/8"            | 23'-0" |
| BENT (COL. TIE)                     | 33  | c <sub>2</sub>  | 1/4"            | 8'-6"  |
| BENT (CON. TIE)                     | 22  | c <sub>3</sub>  | 1/4"            | 23'-0" |
| BENT (UPPER STIRRUP)                | 36  | s <sub>1</sub>  | 1/2"            | 26'-0" |
| BENT (LOWER STIRRUP)                | 16  | s <sub>2</sub>  | 1/2"            | 25'-0" |
| RAILING (POSTS) TOP AND BOTTOM      | 24  | d <sub>9</sub>  | 1/2"            | 5'-6"  |
| TRAILING (END POSTS) TOP AND BOTTOM | 16  | d <sub>10</sub> | 1/2"            | 4'-0"  |

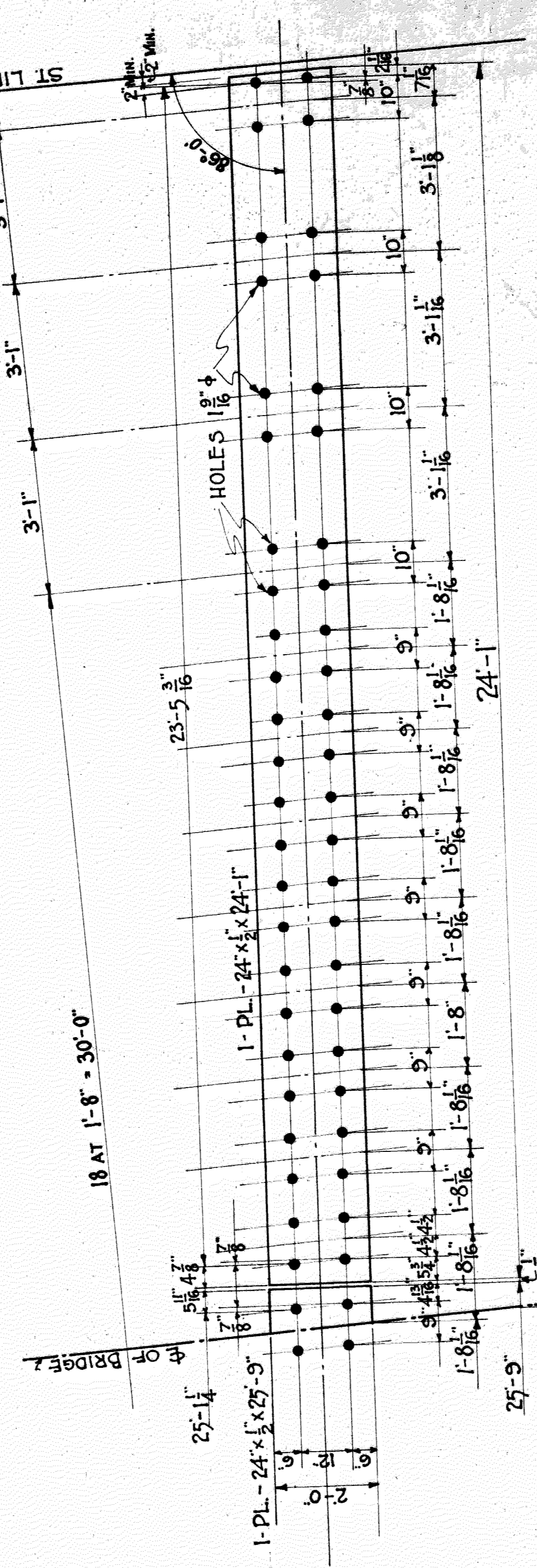
| BILL OF WIRE MESH                |            |              | DESCRIPTION                           |  |
|----------------------------------|------------|--------------|---------------------------------------|--|
| LOCATION                         | NO. SHEETS | SIZE         |                                       |  |
| RAILING                          | 8          | 32" x 15'-6" | TRUSSON RIB METAL NO. 4 OR EQUIVALENT |  |
| SIDEWALK                         | 44         | 32" x 6'-3"  | "                                     |  |
| DECK (BOTTOM)                    | 28         | 48" x 18'-5" | TRUSSON RIB METAL NO. 6 OR EQUIVALENT |  |
| DECK (SIDEWALK)                  | 60         | 64" x 5'-0"  | TRUSSON RIB METAL NO. 8 OR EQUIVALENT |  |
| DECK (PROTECTIVE CONT.)          | 870 FT     | 48" WIDE     | NO. 12 GAUGE 4 IN. WIRE MESH          |  |
| DECK (SIDEWALK) BLAST PROTECTION | 316 FT     | 32" WIDE     | DITTO                                 |  |
| DECK PROTECTION                  | 216        | 48" WIDE     | DITTO                                 |  |

| MISCELLANEOUS MATERIAL    |        |                | DESCRIPTION            |  |
|---------------------------|--------|----------------|------------------------|--|
| ITEM                      | NO.    | SIZE           |                        |  |
| BEARING PLATES (BENT)     | 1 PL.  | 24" x 24" x 1" | SEE DETAIL             |  |
| BEARING PLATES (ABUTMENT) | 2 PLS. | 24" x 25" x 1" | "                      |  |
| ANCHOR BOLTS              | 200    | 3/4" x 18 LG.  | SWEDGE BOLTS WITH NUTS |  |
| CLIPS                     | 200    | -              | SEE DETAIL             |  |

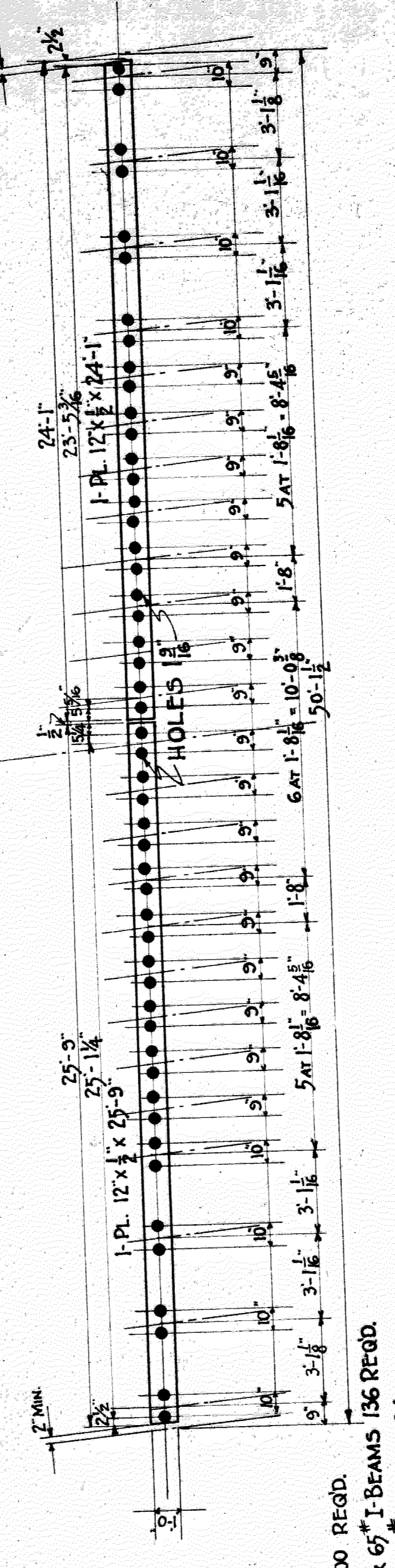
| BILL OF FLOOR BEAMS |     |                |             | REMARKS |             |
|---------------------|-----|----------------|-------------|---------|-------------|
| LOCATION            | NO. | MARK           | SIZE        | LENGTH  |             |
| DECK (STREET)       | 34  | B <sub>1</sub> | 20" x 65.4" | 32'-2"  | No DRILLING |
| DECK (SIDEWALK)     | 16  | B <sub>2</sub> | 20" x 81.4" | 32'-2"  | "           |



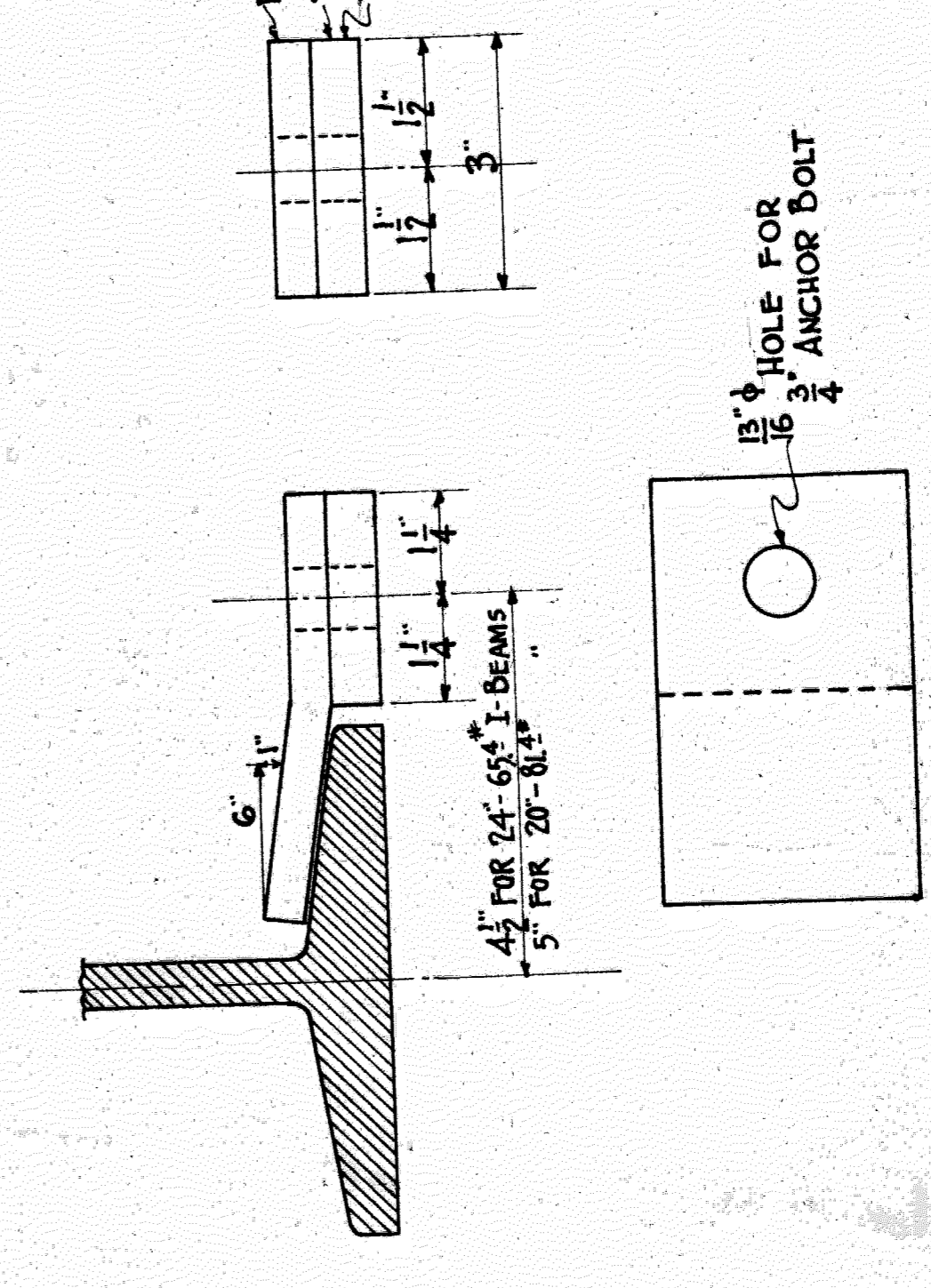
LOCATION FOR PLASTIC INSERTS  
SCALE 1/4" TO 1'-0"



DETAIL FOR BENT BEARING PLATES  
SCALE 1/2" TO 1'-0"



DETAIL FOR ABUTMENT BEARING PLATES  
BOTH ABUTMENTS ALIKE  
SCALE 1/4" TO 1'-0"

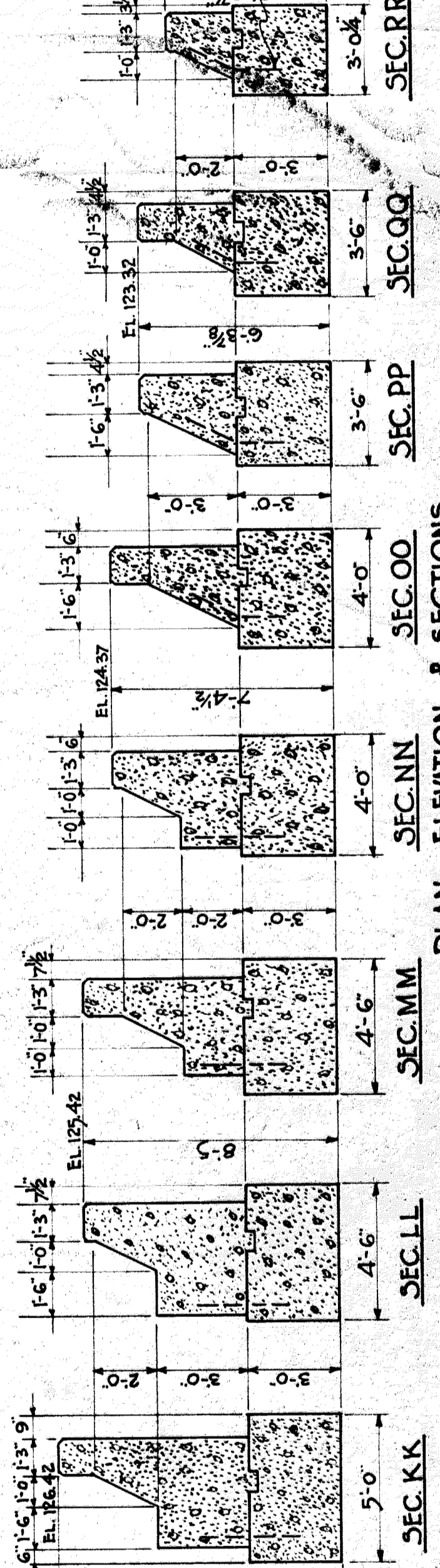
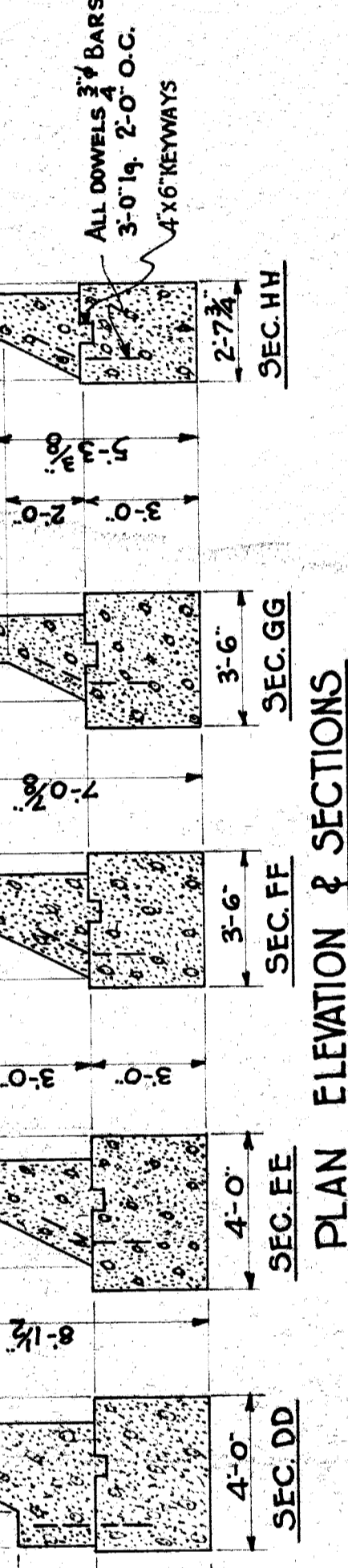
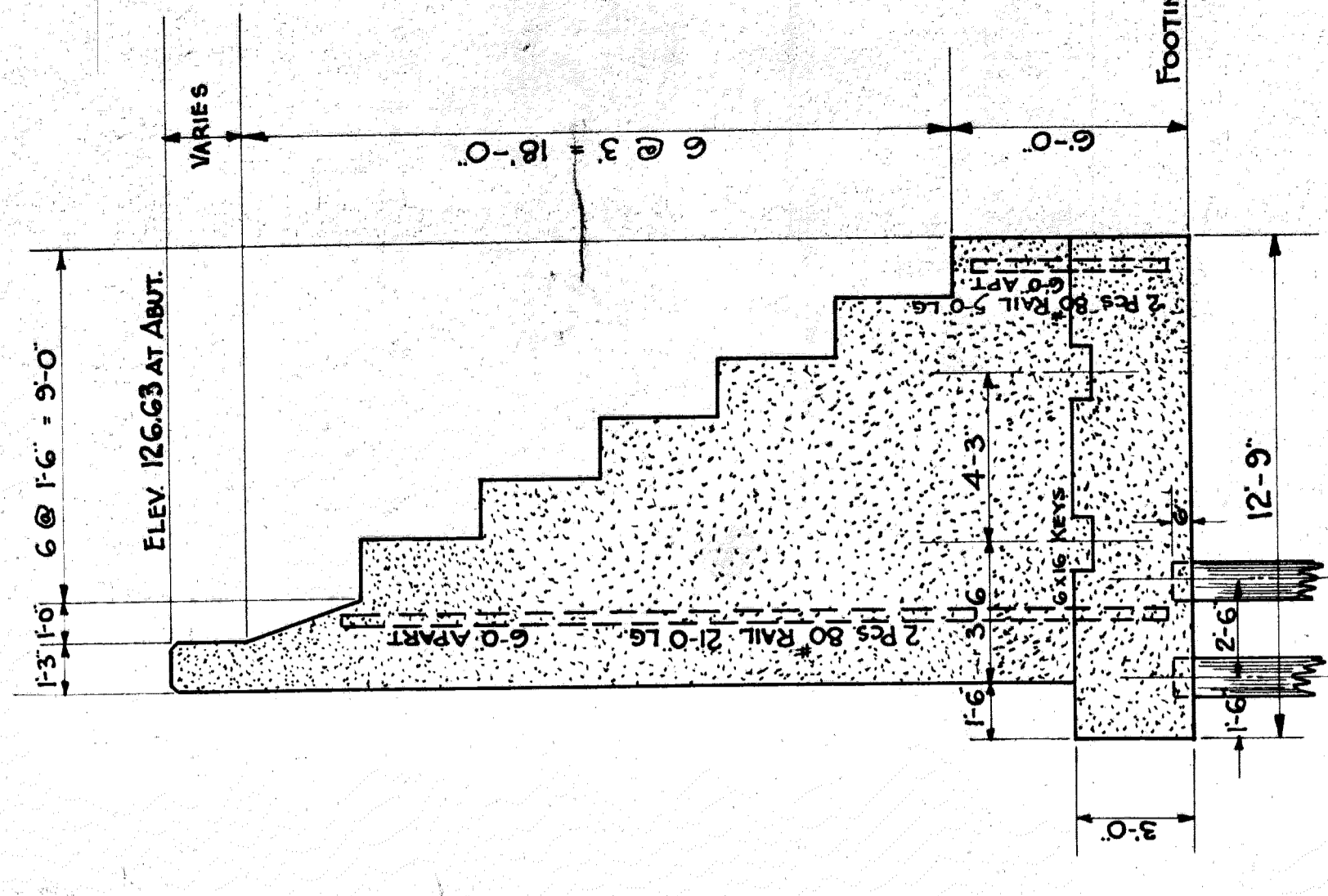
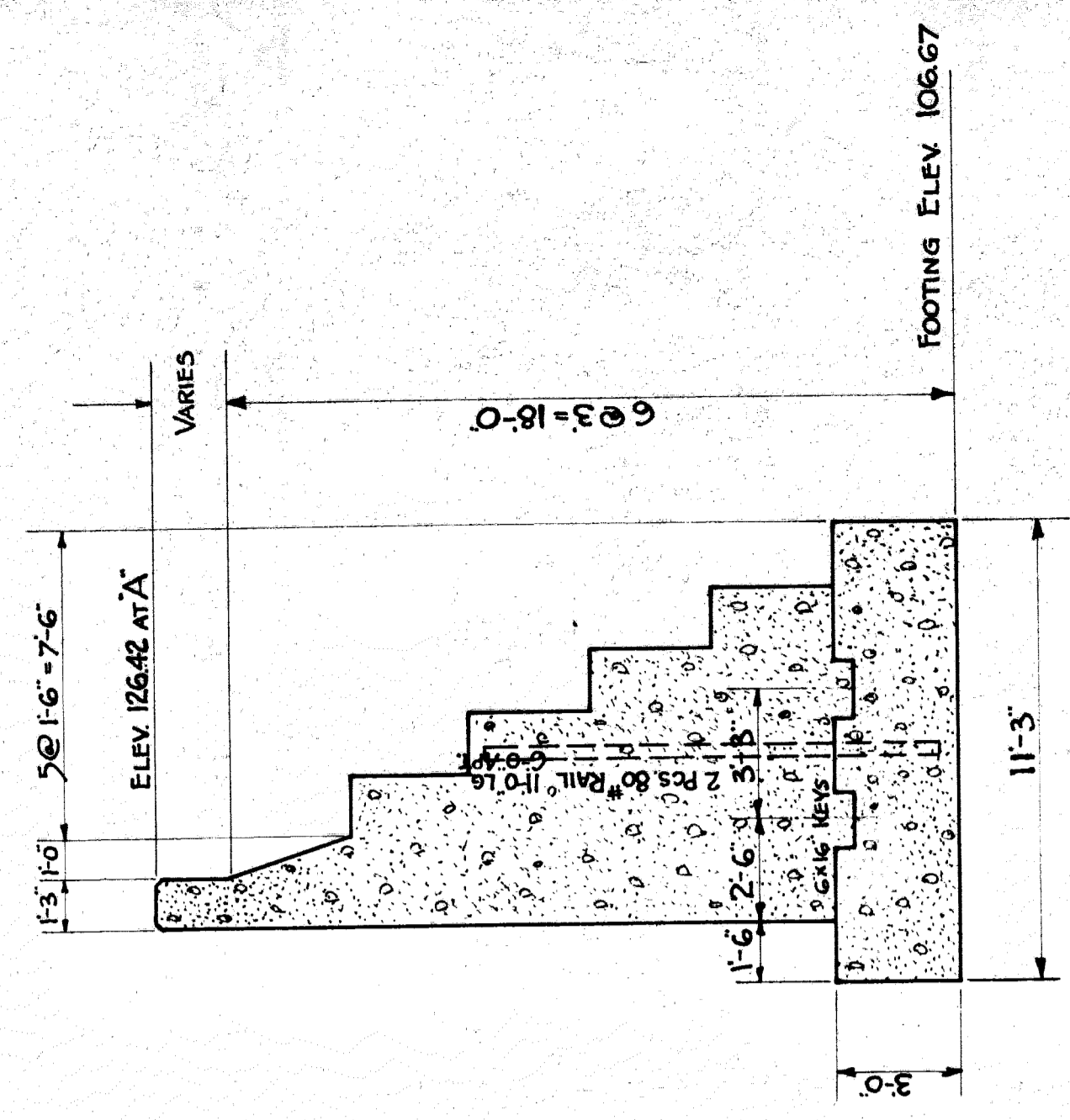
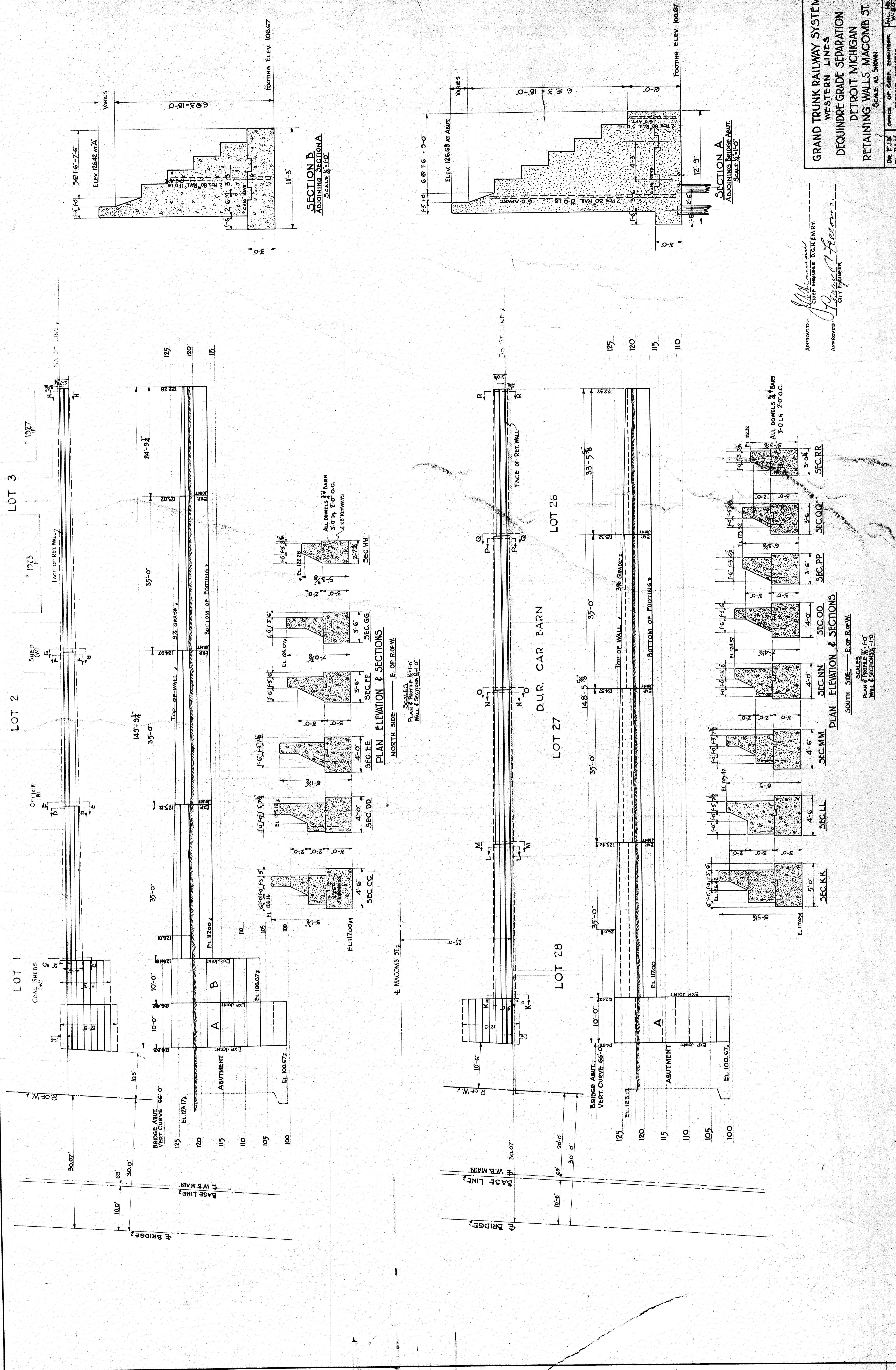


DETAIL OF I-BEAM CLIPS  
SCALE 1/2" SIZE

APPROVED: *[Signature]*  
CHIEF ENGINEER - D.G.R. F.M.R.Y.  
APPROVED: *[Signature]*  
CITY ENGINEER.

GRAND TRUNK RAILWAY SYSTEM  
WESTERN LINES  
DEQUINRE GRADE SEPARATION  
DETROIT, MICHIGAN  
BRIDGE - MACOMB STREET  
SCALE - AS SHOWN  
DR. R.A.W. OFFICE OF CHIEF ENGINEER  
DETROIT, MICHIGAN  
CH. ENR.  
JUL. NO. W-3074  
FILE  
JAN. 14, 1925  
SHEET 3 OF 3  
Revised June 3, 1925 (RES)  
Revised June 8, 1925 (RES)





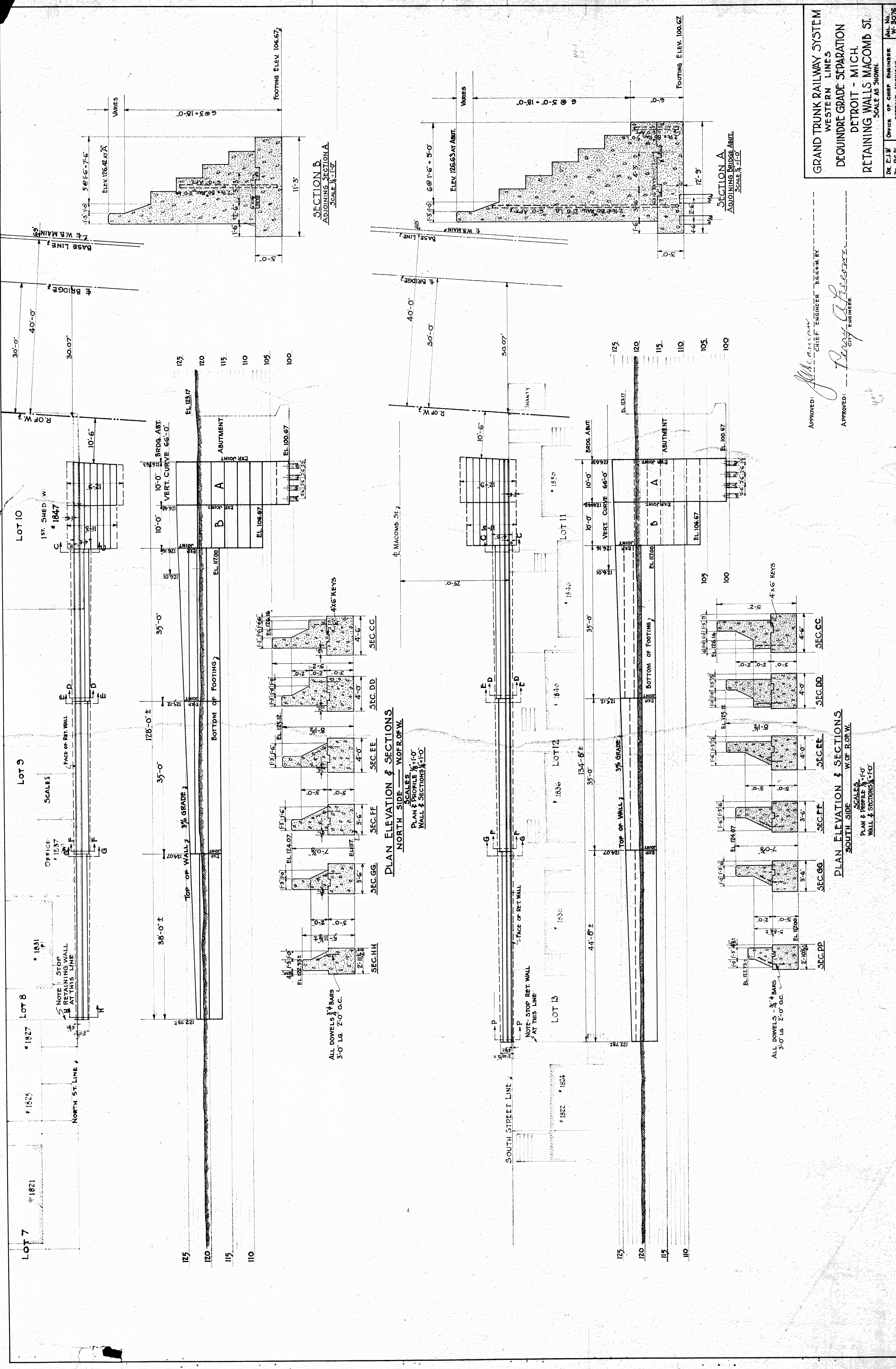
APPROVED: *J. J. McManis*  
CHIEF ENGINEER D.G.R. ENR.  
APPROVED: *J. J. McManis*  
CITY ENGINEER

GRAND TRUNK RAILWAY SYSTEM  
WESTERN LINES  
DEQUINDE GRADE SEPARATION  
DETROIT MICHIGAN  
RETAINING WALLS MACOMB ST.  
SCALE AS SHOWN.

DR. E. J. M. W. 8715  
OFFICE OF CHIEF ENGINEER  
DETROIT MICHIGAN  
JAN 23 1927  
FILE



APPROVED: *J. M. ...* CHIEF ENGINEER  
 APPROVED: *P. ...* CITY ENGINEER



PLAN ELEVATION & SECTIONS  
 NORTH SIDE W.O.F. OF W.

PLAN & PROFILE 1/4" = 1'-0"  
 WALL & SECTIONS 1/4" = 1'-0"

PLAN ELEVATION & SECTIONS  
 SOUTH SIDE W.O.F. OF W.

PLAN & PROFILE 1/4" = 1'-0"  
 WALL & SECTIONS 1/4" = 1'-0"

SECTION B  
 ADJOINING SECTION A  
 SCALE 1/4" = 1'-0"

SECTION A  
 ADJOINING BRIDGE ABUT.  
 SCALE 1/4" = 1'-0"

ALL DOWELS 3/4" BARS  
 3'-0" LG. 2'-0" O.C.

ALL DOWELS 3/4" BARS  
 3'-0" LG. 2'-0" O.C.

