

CITY OF DETROIT °

BRIDGE NO. X0-72

LAFAYETTE AVENUE CROSSING

GRAND TRUNK WESTERN RAILROAD

ERECTED 1925

RECONSTRUCTED 1962

HALF-SIZE

*Furnish and install 4 cast bronze plaques 8" x 14" with Fascia (or Modern Block) letters flat face, no border, medium pebble surface texture, with concealed mounting. All as manufactured by United States Bronze Sign Company, New York, New York, or an approved equal.*

*Two plaques each with lettering in accordance with sample:*

*Bridge No. X0-69 Larned Street  
Erected 1924 Reconstructed 1962*

*Bridge No. X0-72 Lafayette Avenue  
Erected 1925 Reconstructed 1962*

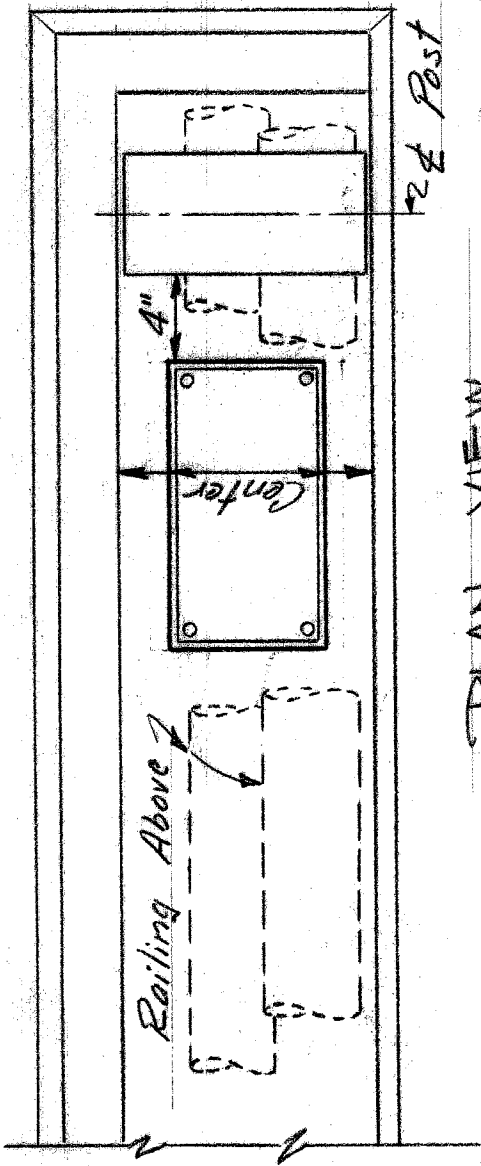
NAME PLATE STUDIES

CONTRACT PW-3988

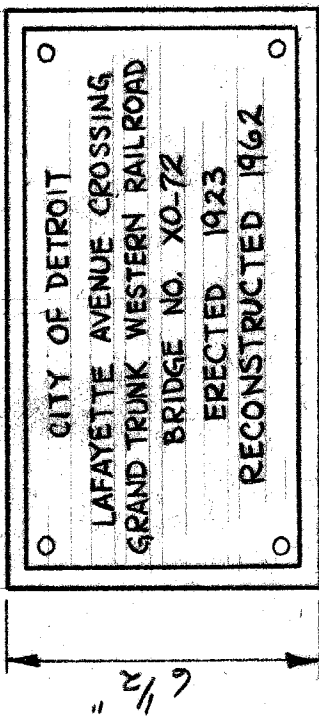
LARNED & LAFAYETTE BRIDGES OVER GTWRR

A. HANSON

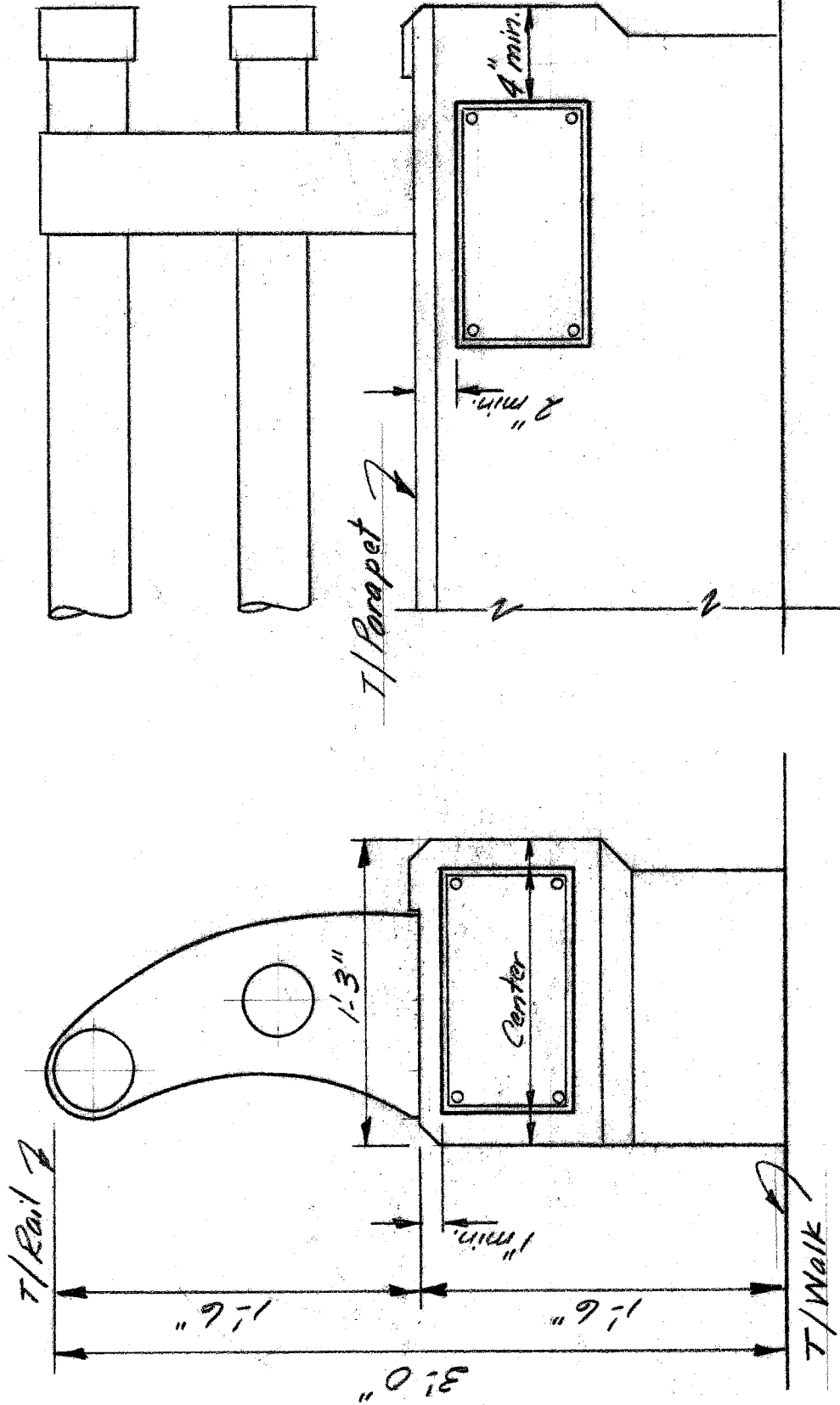
3/15/62



PLAN VIEW



NAME PLATE DETAIL



END VIEW

SIDEWALK VIEW

NAME PLATE STUDIES

CONTRACT PW-3988

LARNED & LAFAYETTE BRIDGES OVER G.T.W.R.R.

A. HANSON

3/1/62