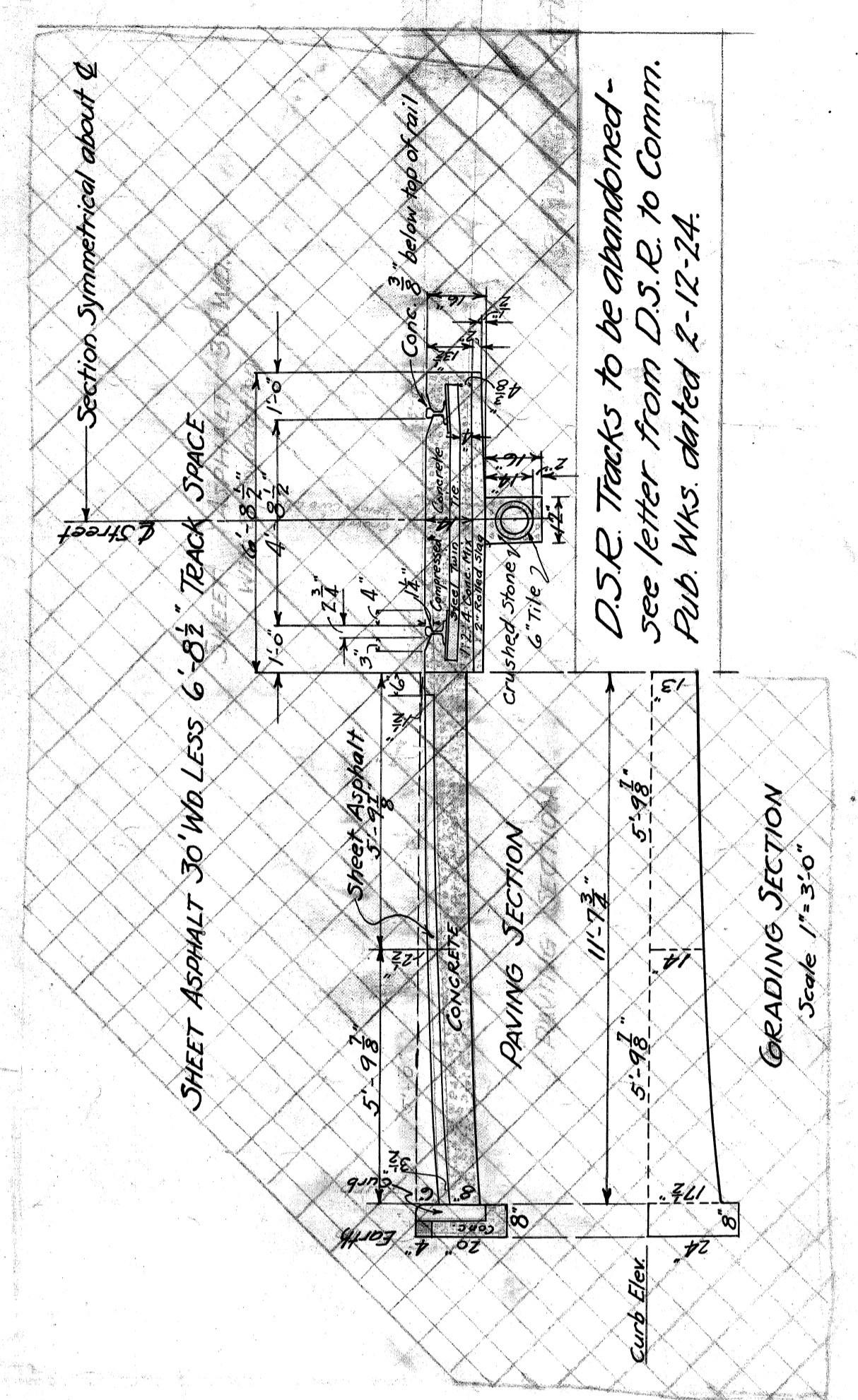
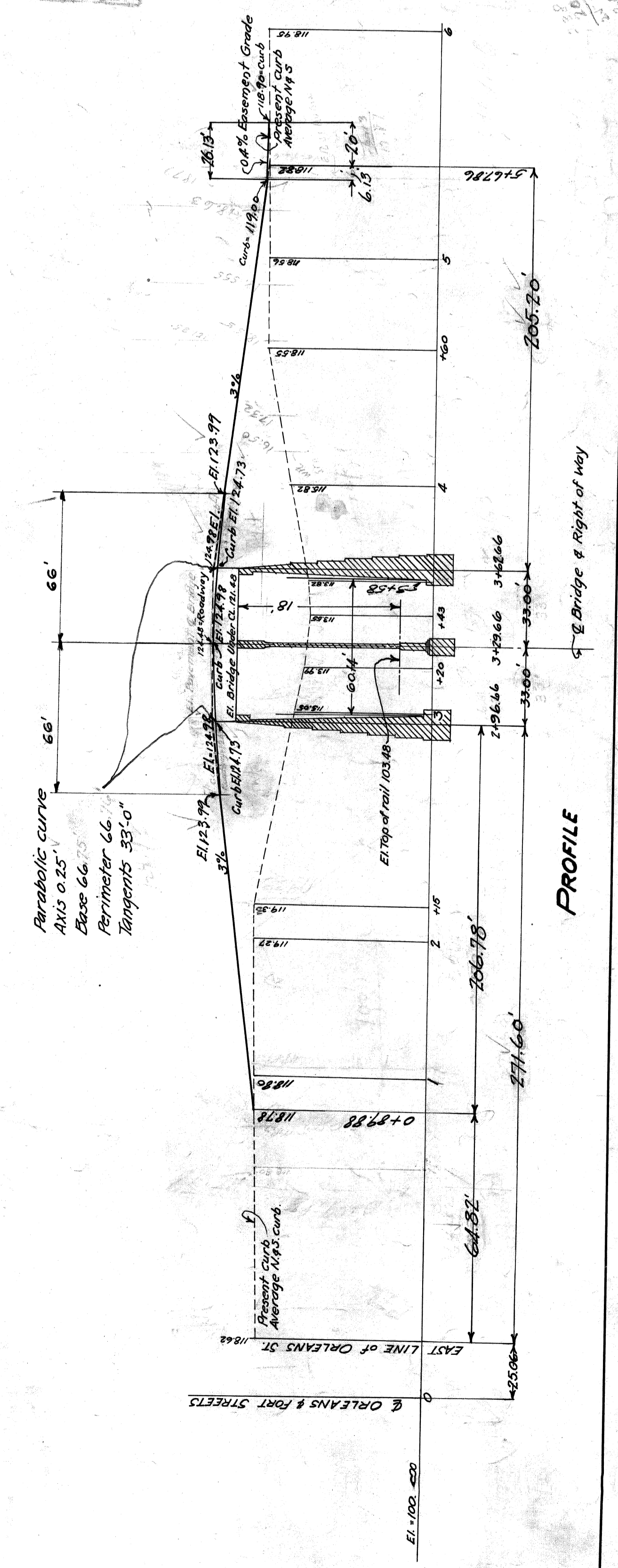
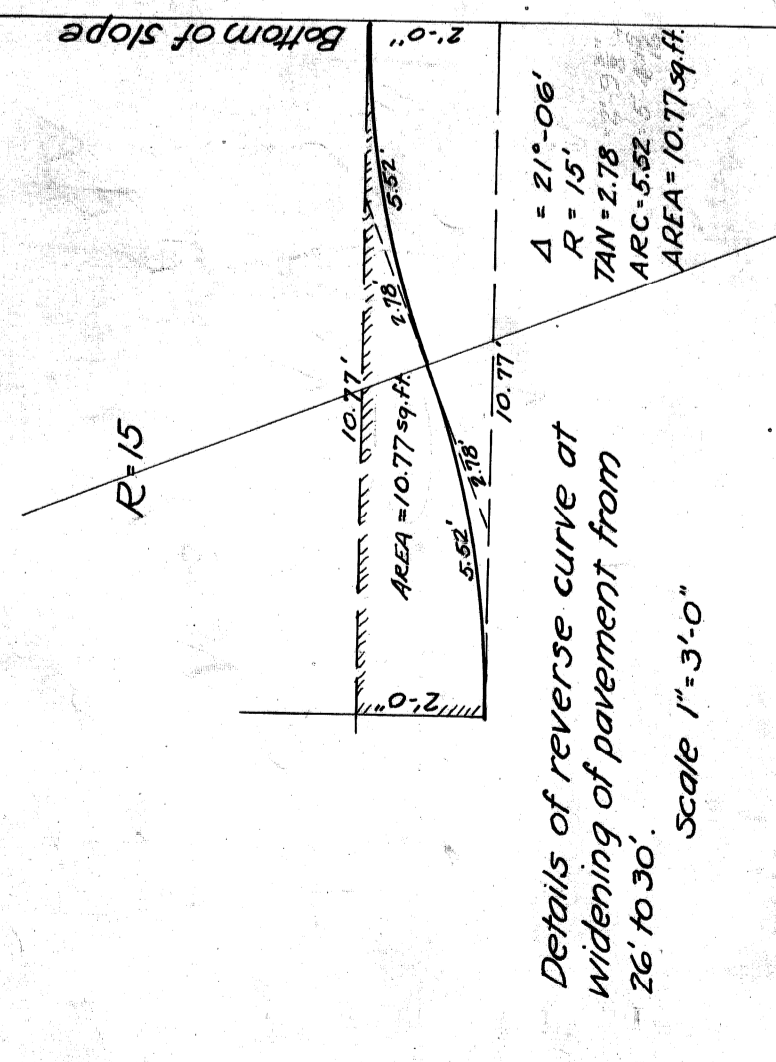


NOTE: Grading section only applicable on approaches.



D.S.R. Tracks to be abandoned - see letter from D.S.R. to Comm. Pub. Wks. dated 2-12-24.

NOTE:
New pavement to be surfaced with asphalt 3 1/2" thick instead of brick now used. 6' sidewalks to be rebuilt on present location except that the inner edge of walks shall not be closer than 6" from nearest coping edge of property retaining walls. Shade trees shall not be disturbed except where absolutely necessary to attain the above results.



PROFILE

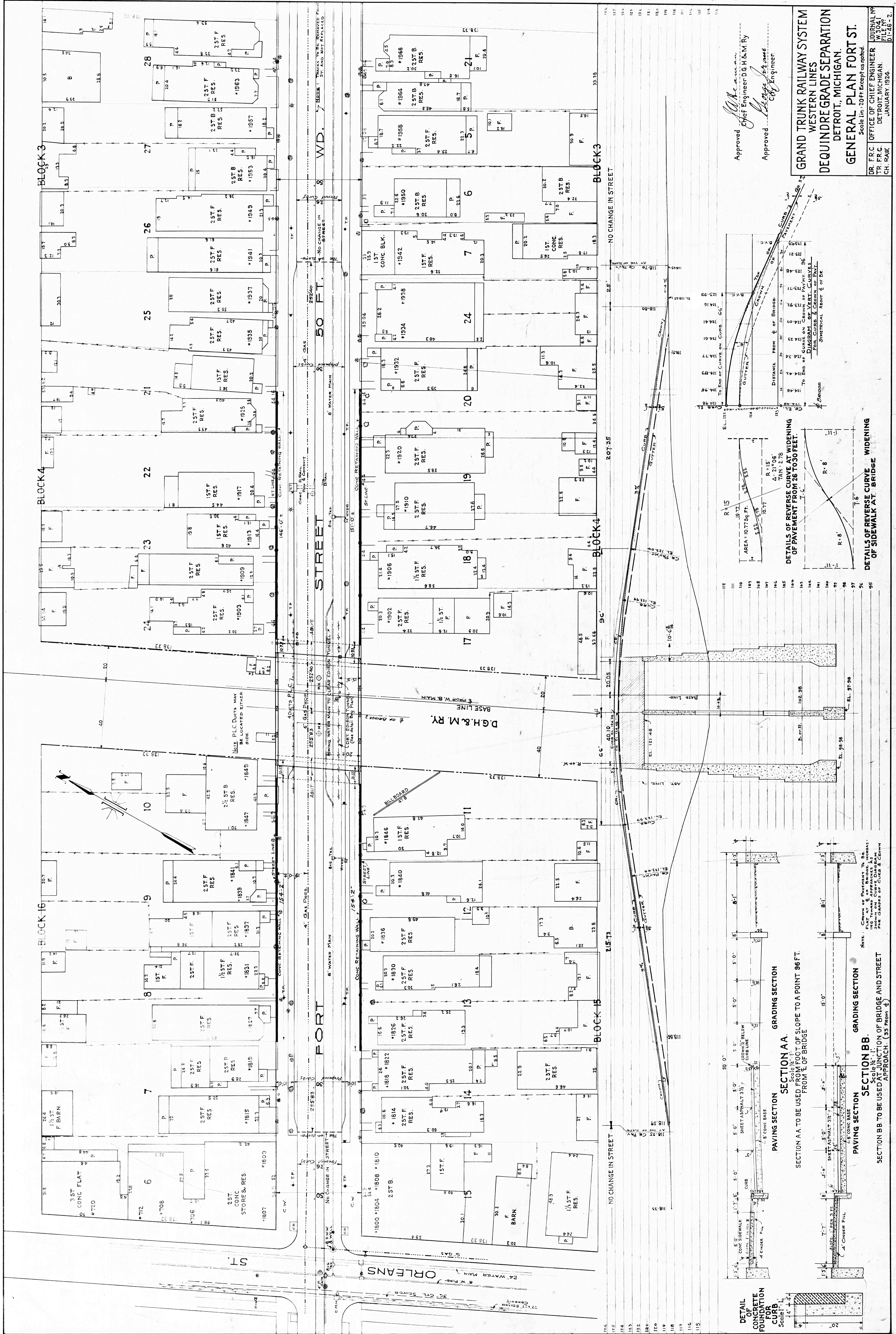
NOTE:
Special beams in bridge to be provided for future replacement of tracks in street as per letter of notification to G. T. Ry. from Comm. Public Works June 6-24.

APPROVED: *[Signature]* 7-24-23
 CHIEF ENGINEER G. T. RYAN SYSTEM WESTERN LINES
CITY OF DETROIT
 DEPARTMENT OF PUBLIC WORKS
 CITY ENGINEER'S OFFICE
 DEPARTMENT OF GRADE SEPARATION & BRIDGES
 DEQUINDRE ST. GRADE SEPARATION
FORT ST.
 Made by *[Signature]* Scales Plan 1"=40' Vertical 1"=10'
 May 1923
 Checked by *[Signature]*

Revised as to tracks & vertical curves 3-1-24

M.C. 10.6
 9/12/23

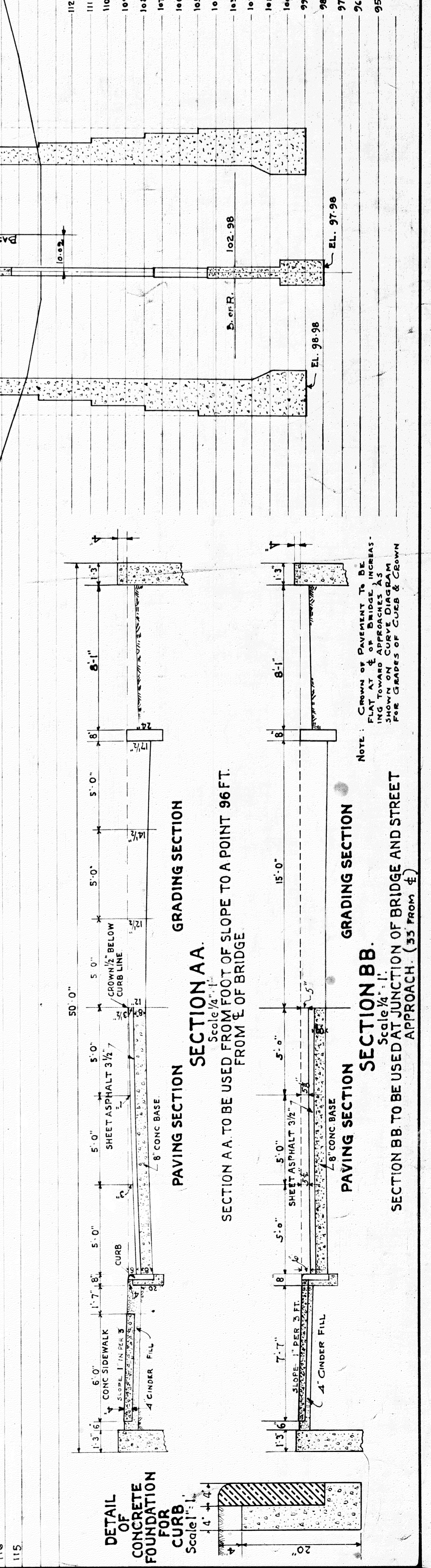
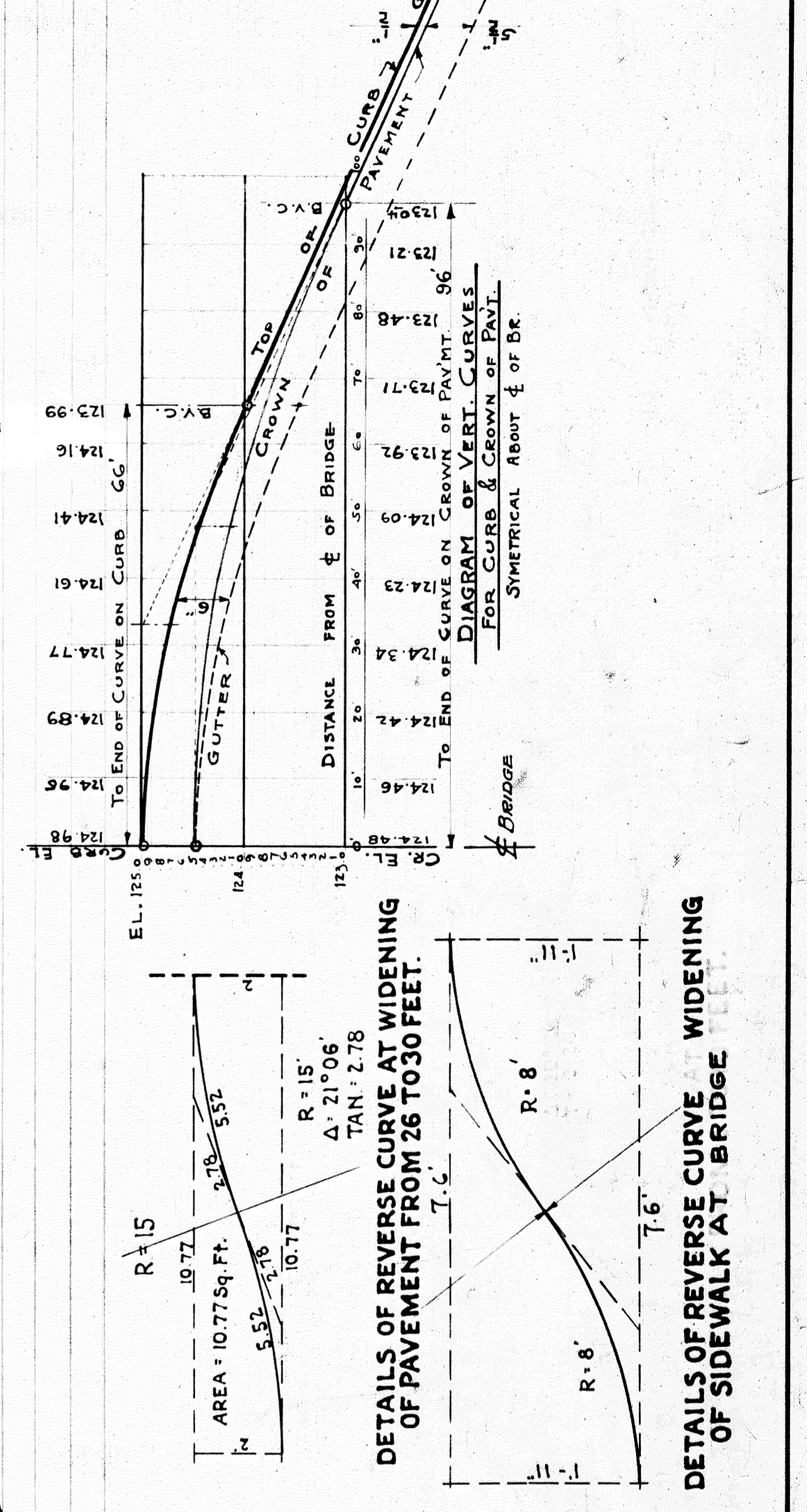
File X0 71-7



Approved *[Signature]*
 Chief Engineer D.G.H. & M. Ry.
 Approved *[Signature]*
 City Engineer.

**GRAND TRUNK RAILWAY SYSTEM
 WESTERN LINES
 DEQUINDRE GRADE SEPARATION
 DETROIT, MICHIGAN.
 GENERAL PLAN FORT ST.**

Scale 1" = 20' (Except as noted).
 DR. F.R.C. OFFICE OF CHIEF ENGINEER.
 TR. F.R.C. DETROIT, MICHIGAN.
 CH. R.A.W. JANUARY, 1924.



NOTE: Curves & Overlays to be made in accordance with the Standard Specifications for Road & Bridge Work, published by the Michigan State Highway Department, 1923.

SECTION AA TO BE USED FROM FOOT OF SLOPE TO A POINT 96 FT. FROM E. OF BRIDGE.

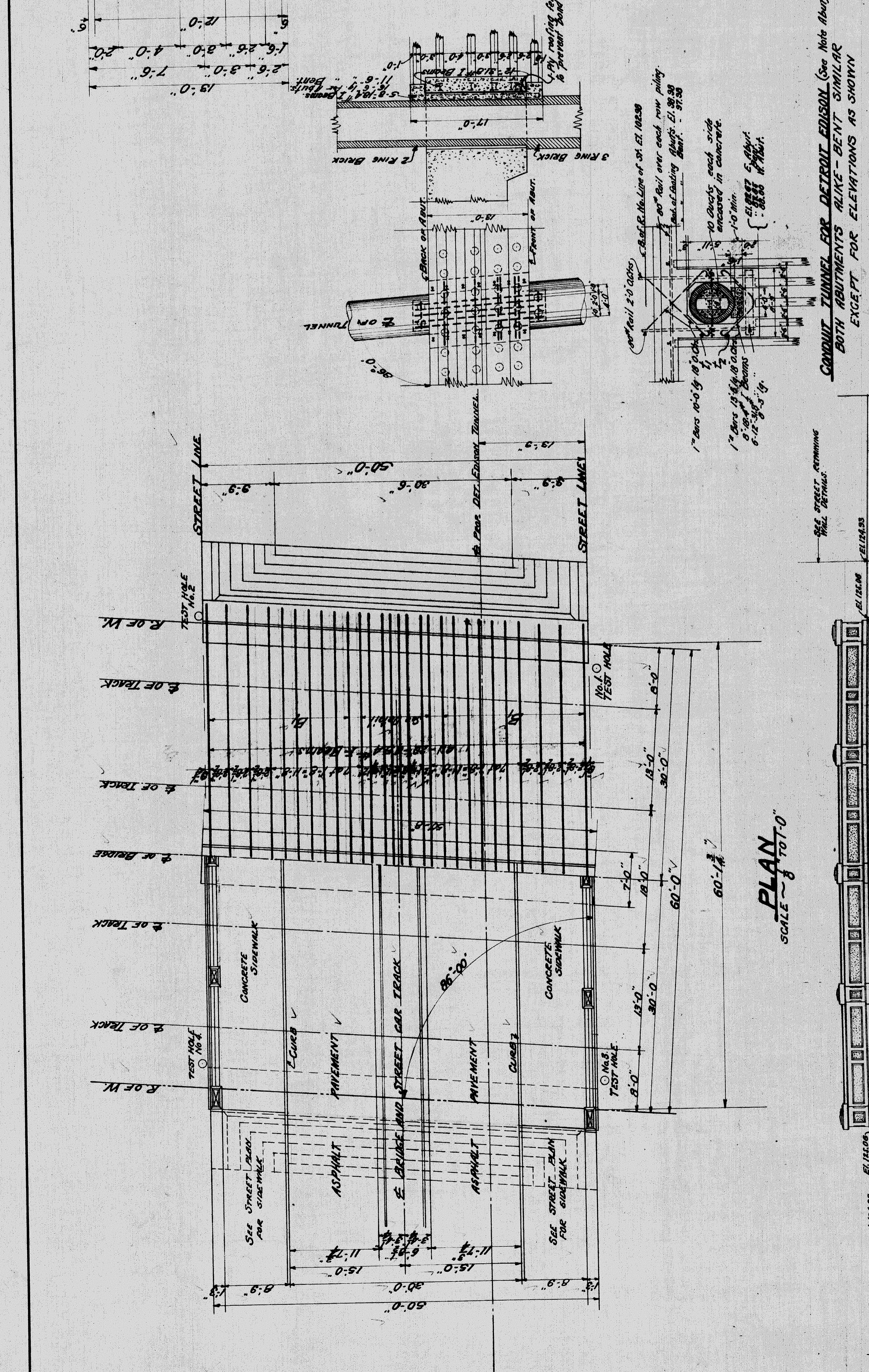
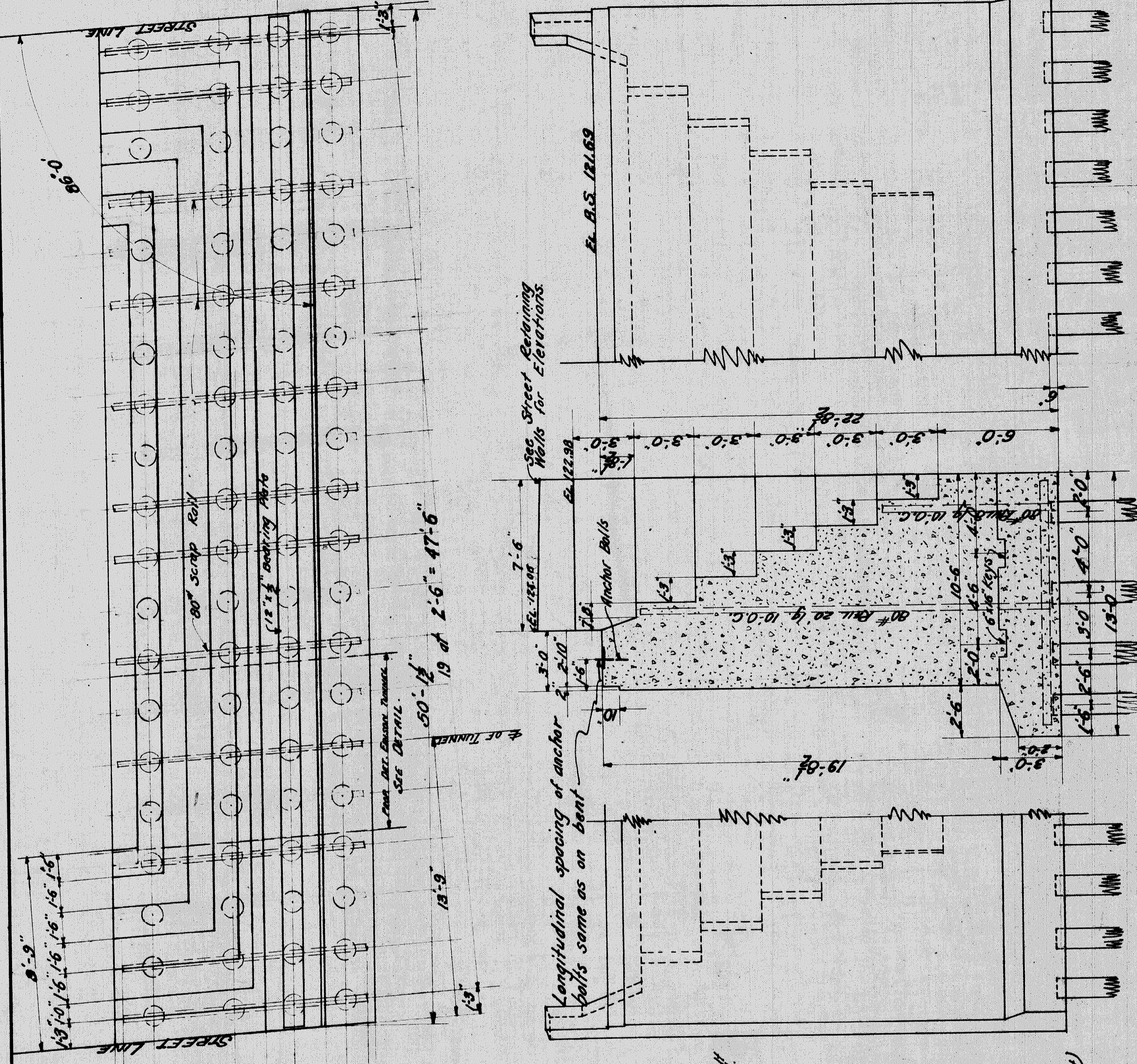
SECTION BB TO BE USED AT JUNCTION OF BRIDGE AND STREET APPROACH. (35' FROM E.)

DETAIL OF CONCRETE FOUNDATION FOR CURB
 Scale 1" = 1'-0"

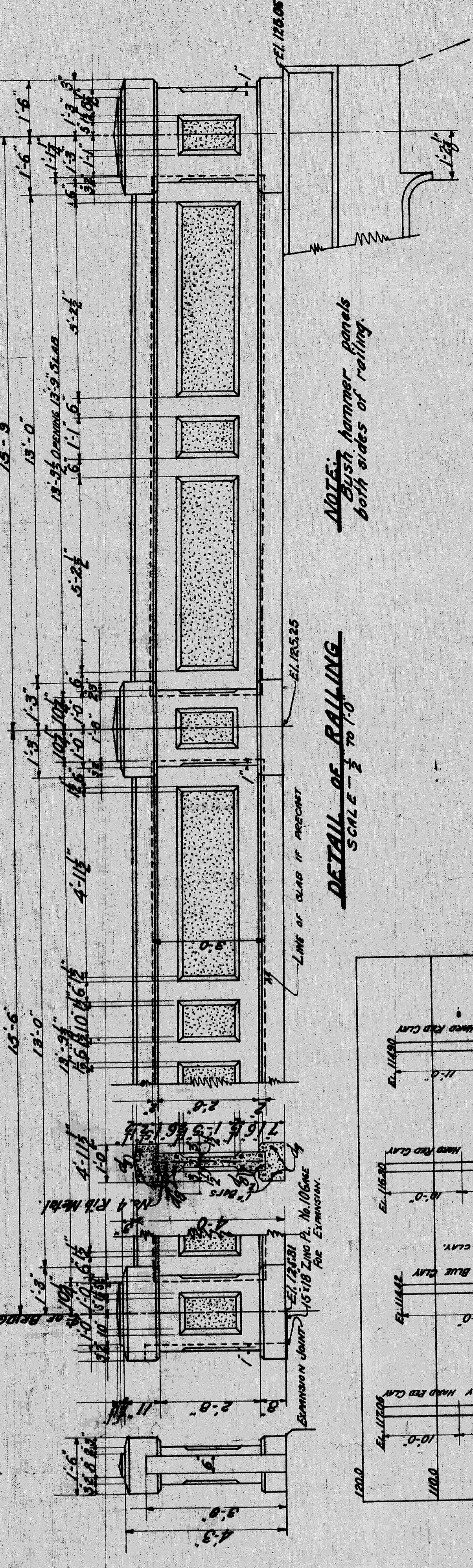
**GRAND TRUNK RAILWAY SYSTEM
WESTERN LINES
DEQUANDRE GRADE SEPARATION
DETROIT, MICHIGAN
BRIDGE — FORT STREET**

DR. EMMETT W. BROWN
CHIEF ENGINEER
DETROIT, MICHIGAN
1910
SCALE — AS SHOWN

FILE NO. 113



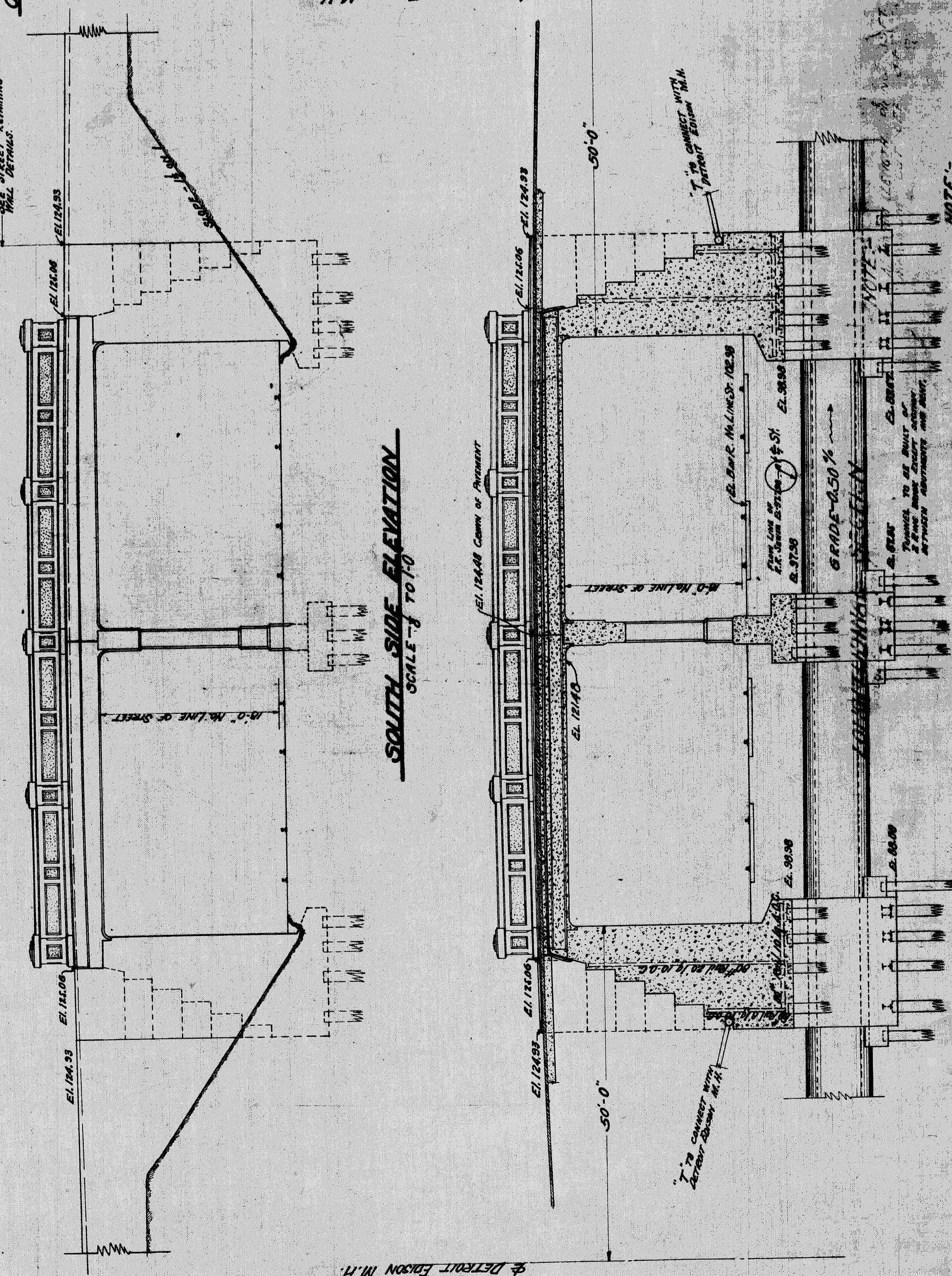
DETAIL OF ABUTMENT
SCALE 3/8" = 1'-0"



Approved: *J.M. Keenan*
Chief Engineer D.C.H. & M. Ry.
Approved: *George Selensky*
City Engineer

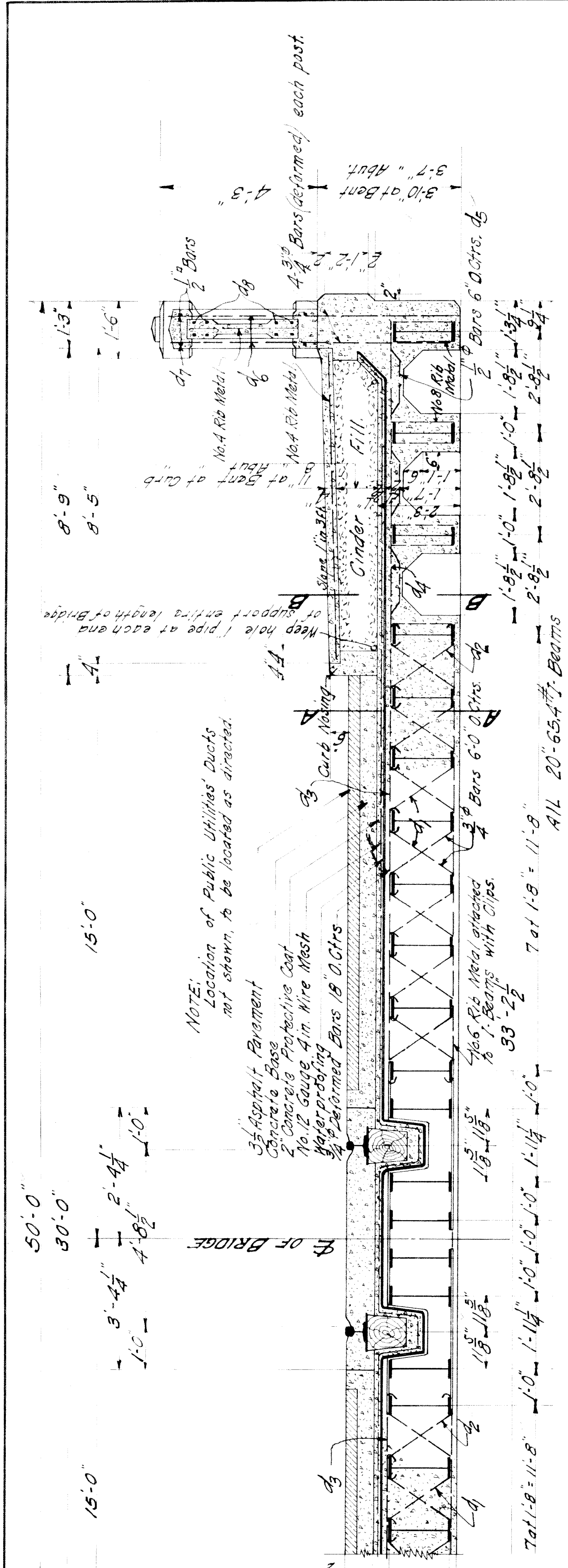
CONDUIT TUNNEL FOR DETROIT EDISON (See Note Above)
BOTH ABUTMENTS ALIKE - BENT SIMILAR
EXCEPT FOR ELEVATIONS AS SHOWN

SOUTH SIDE ELEVATION
SCALE 1/4" = 1'-0"

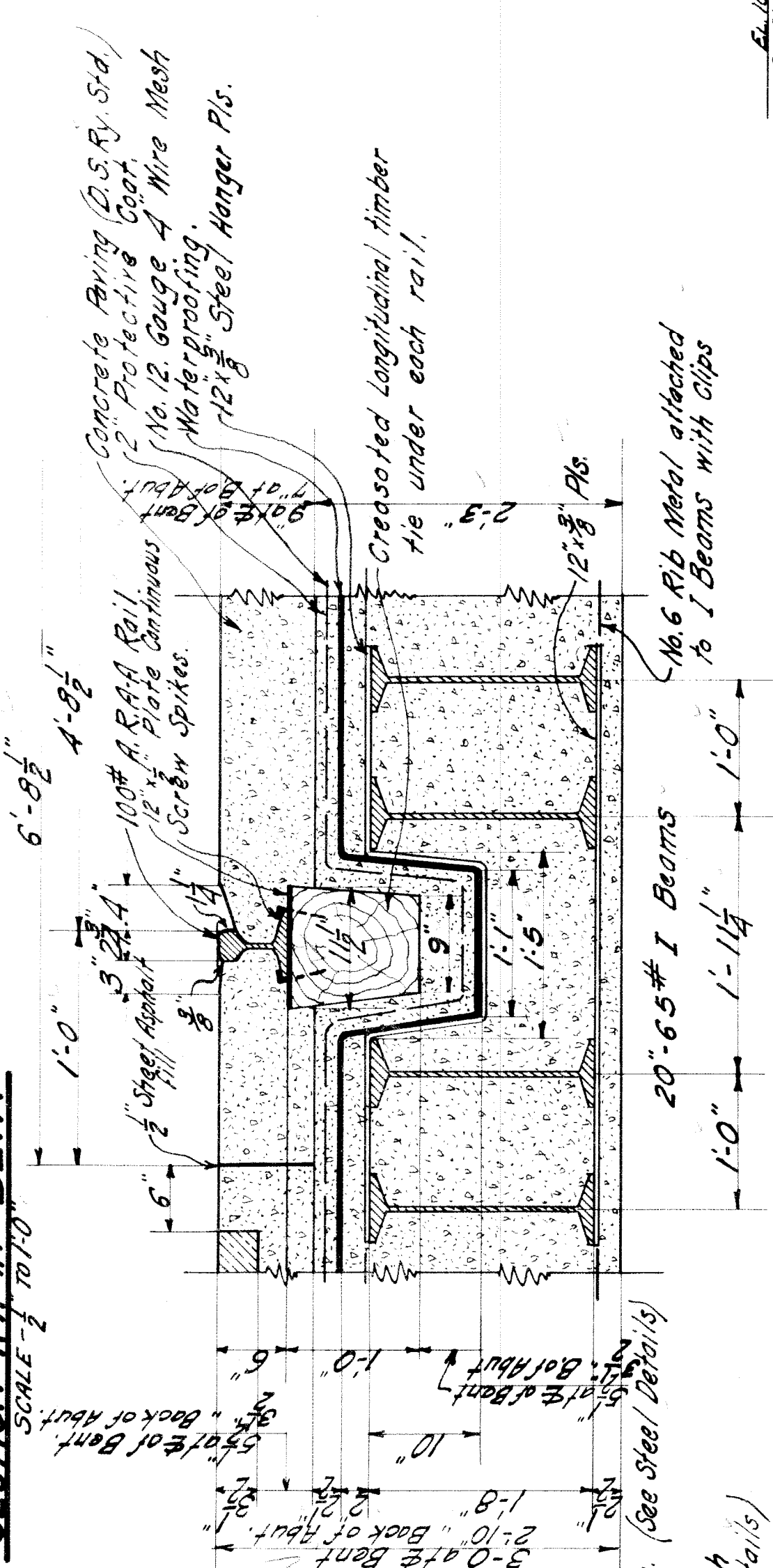


NOTE: MINIMUM LENGTH PLAIN GRAFT MINIMUM SET OFF

NOTE: MINIMUM LENGTH PLAIN GRAFT MINIMUM SET OFF

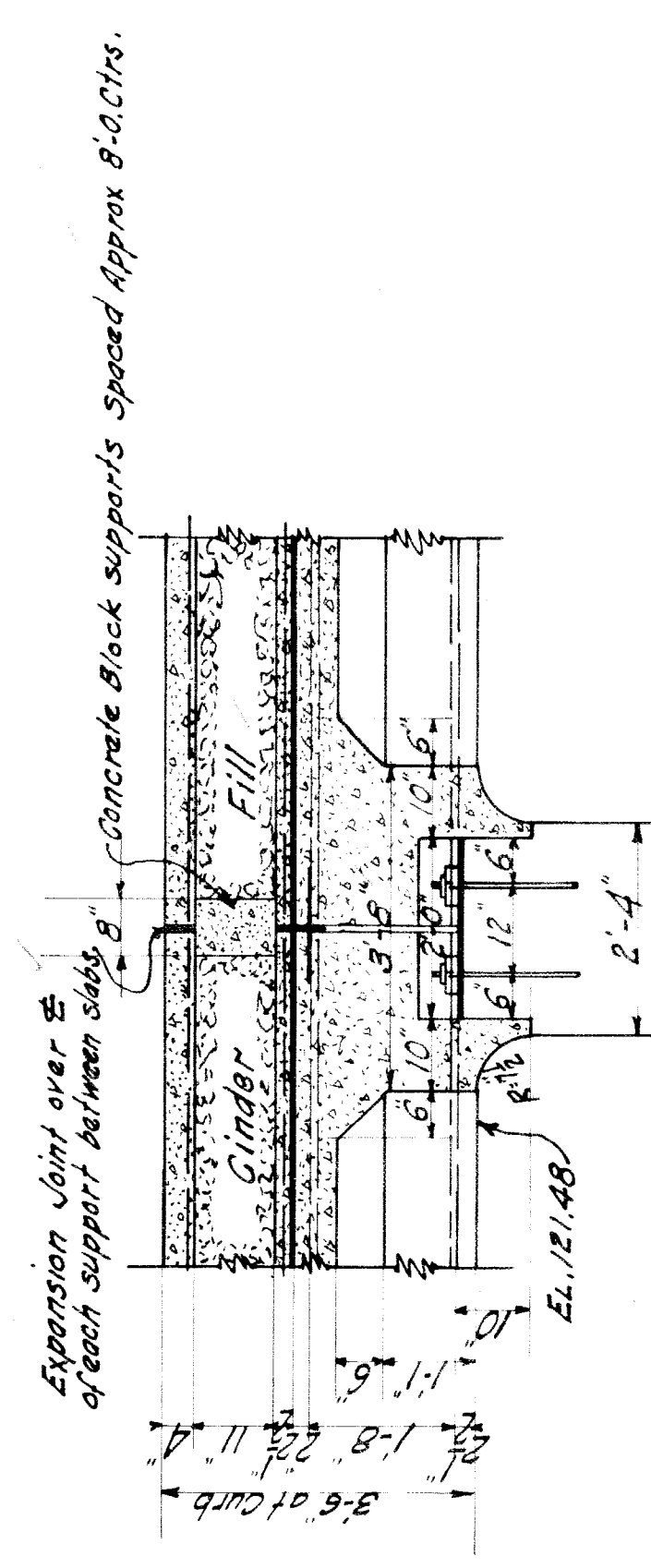


SECTION THRU DECK
SCALE - 1/2 TO 1.0

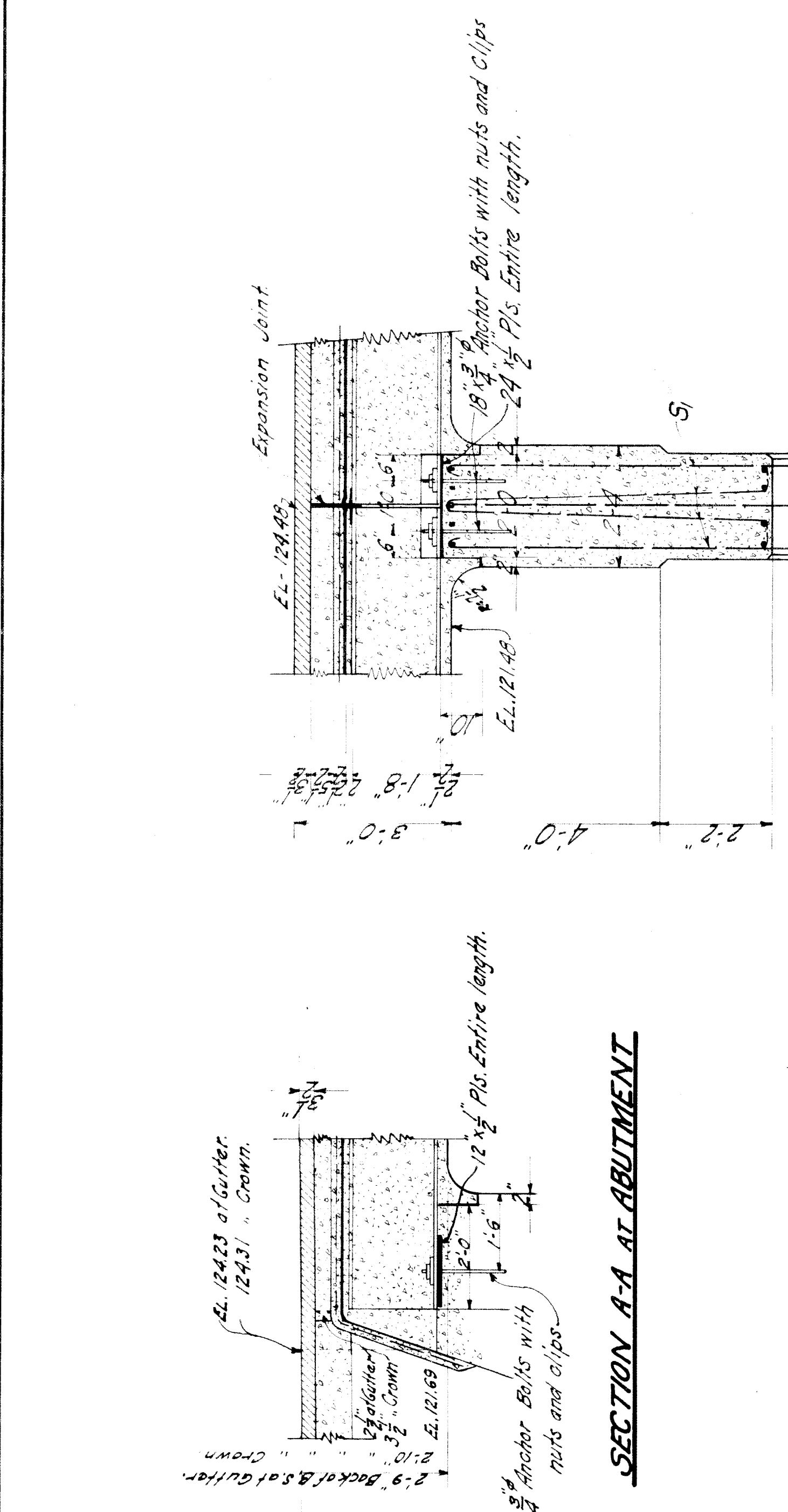


SECTION AA AT BENT
SCALE - 1/2 TO 1.0

SECTION SHOWING CONSTRUCTION UNDER RAIL
SCALE - 1/2 TO 1.0

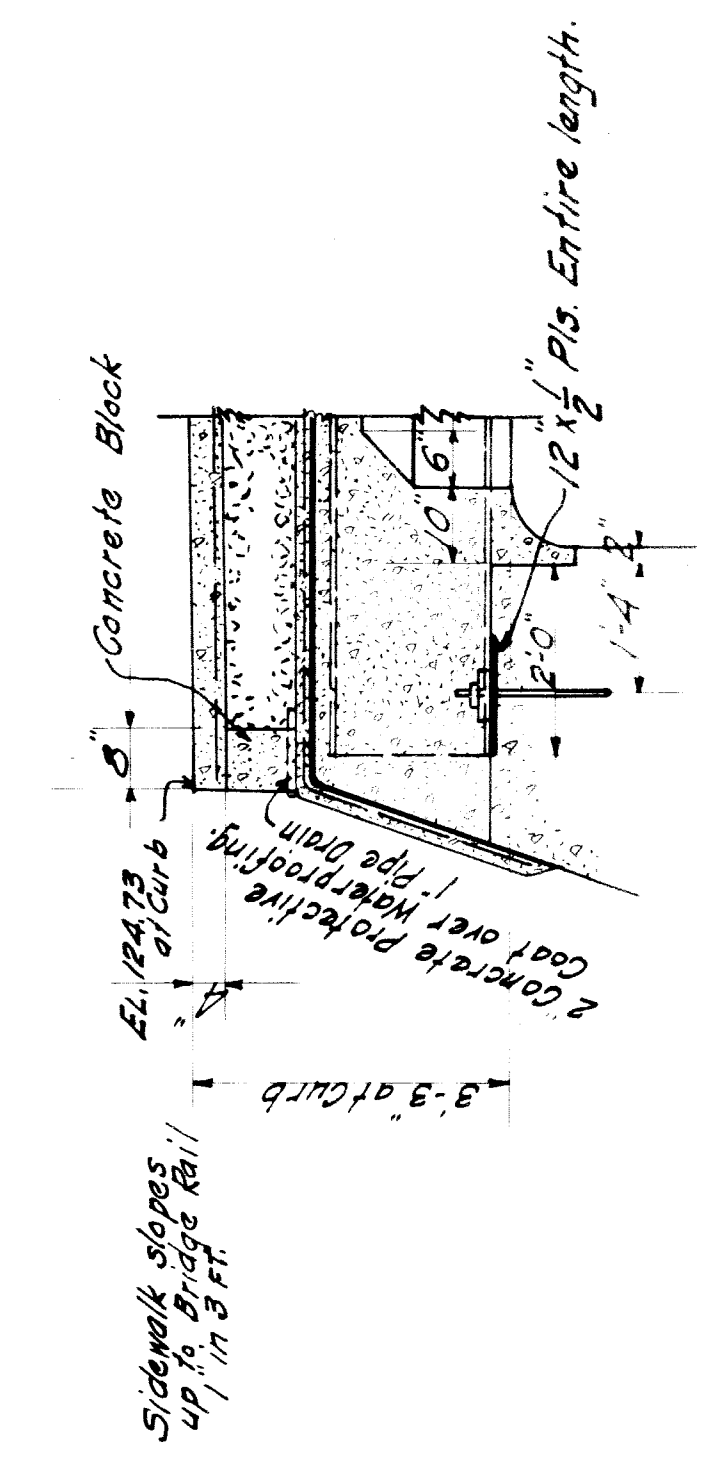


SECTION BB AT BENT
SCALE - 1/2 TO 1.0

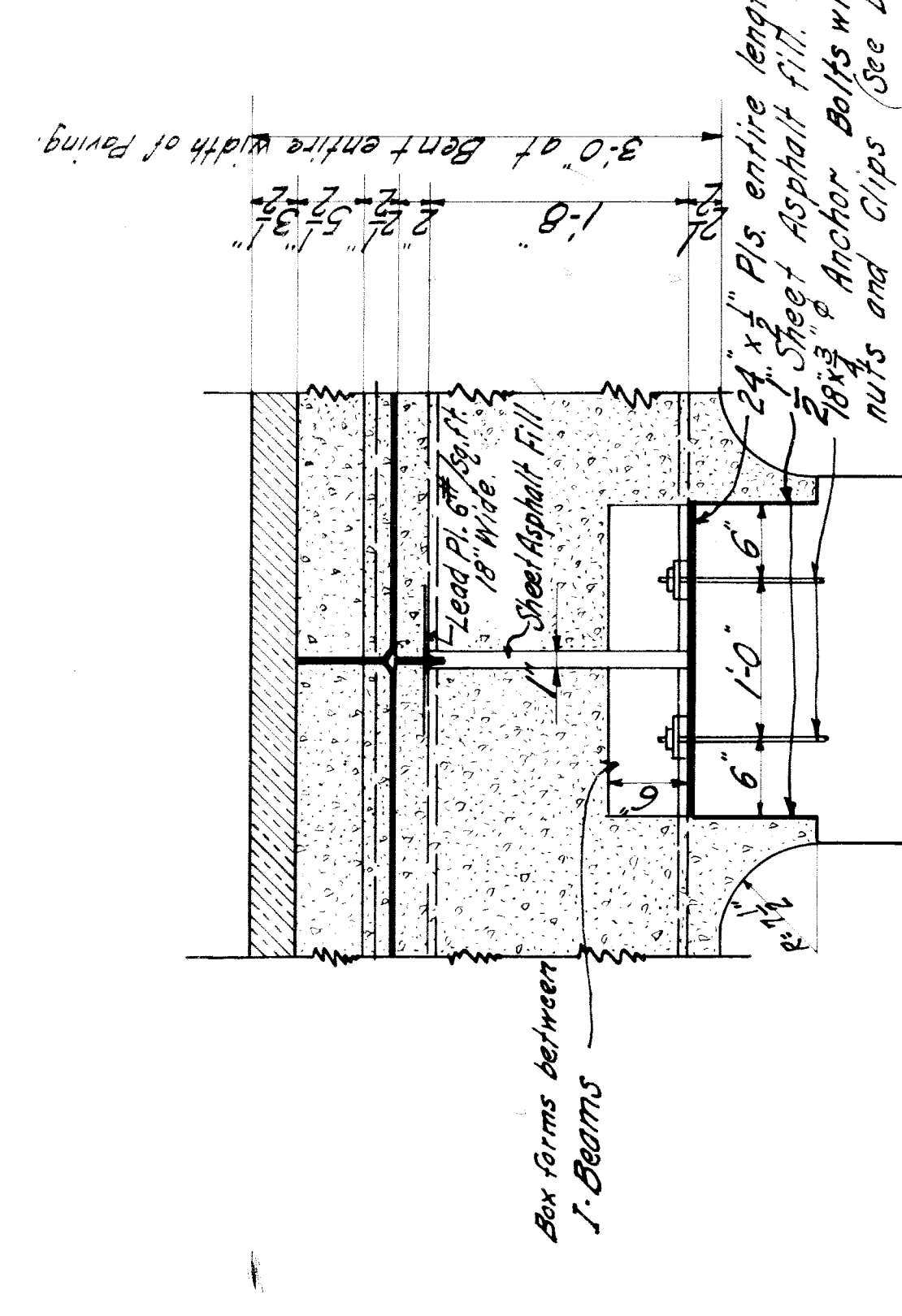


SECTION AA AT ABUTMENT

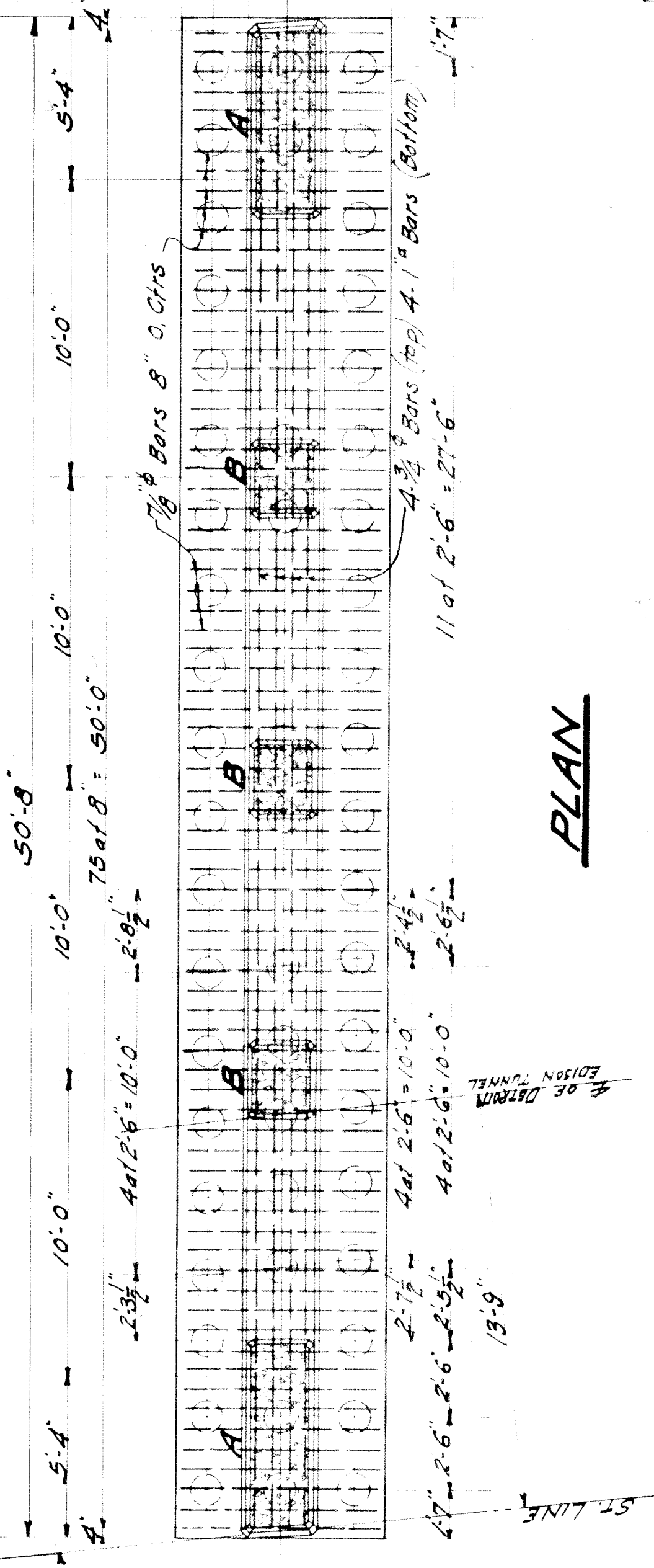
SECTION AA AT BENT ENLARGED
TO SHOW EXPANSION JOINT
SCALE - 1 TO 1.0



SECTION BB AT ABUTMENT



ELEVATION OF BENT SHOWING REINFORCING
SCALE - 1/2 TO 1.0



PLAN

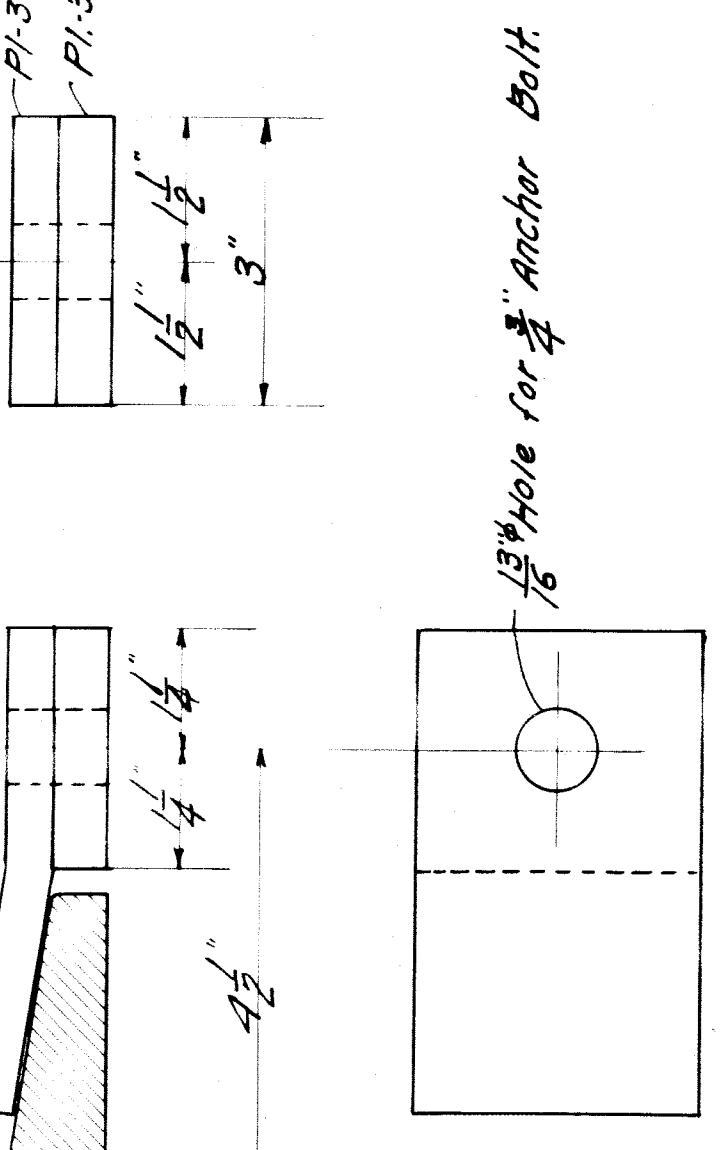
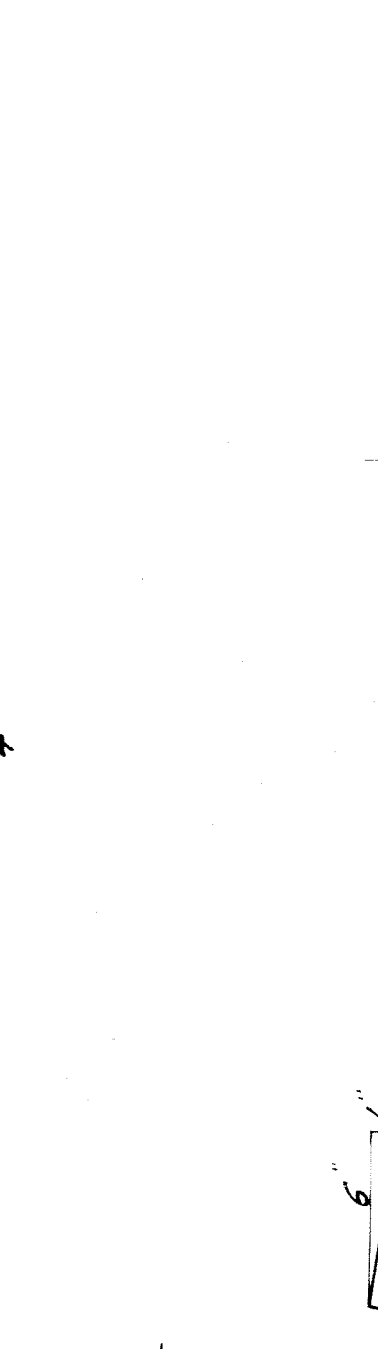
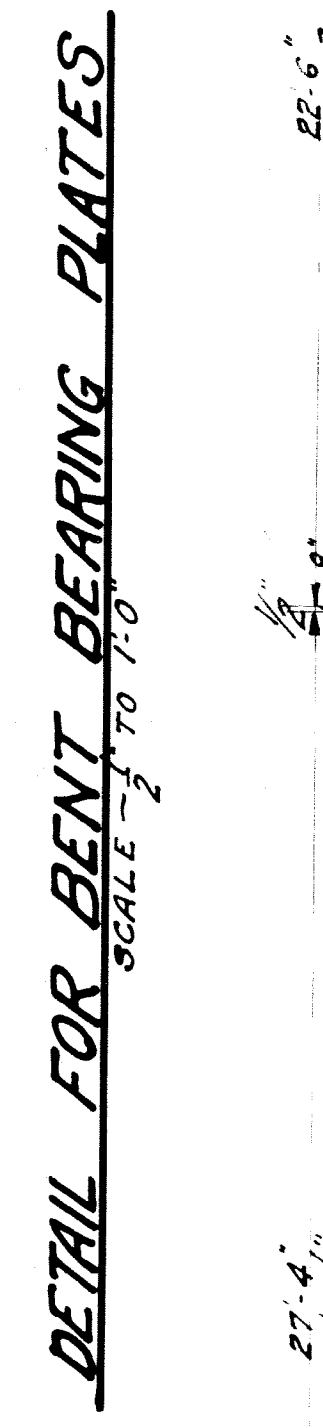
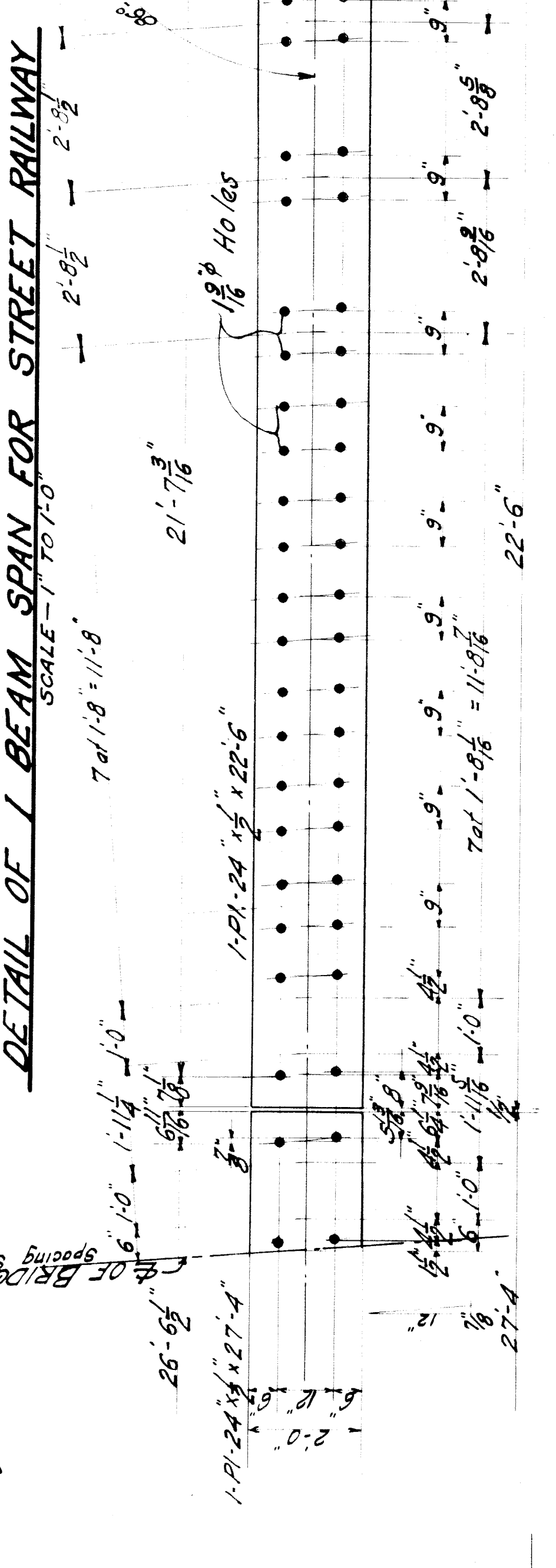
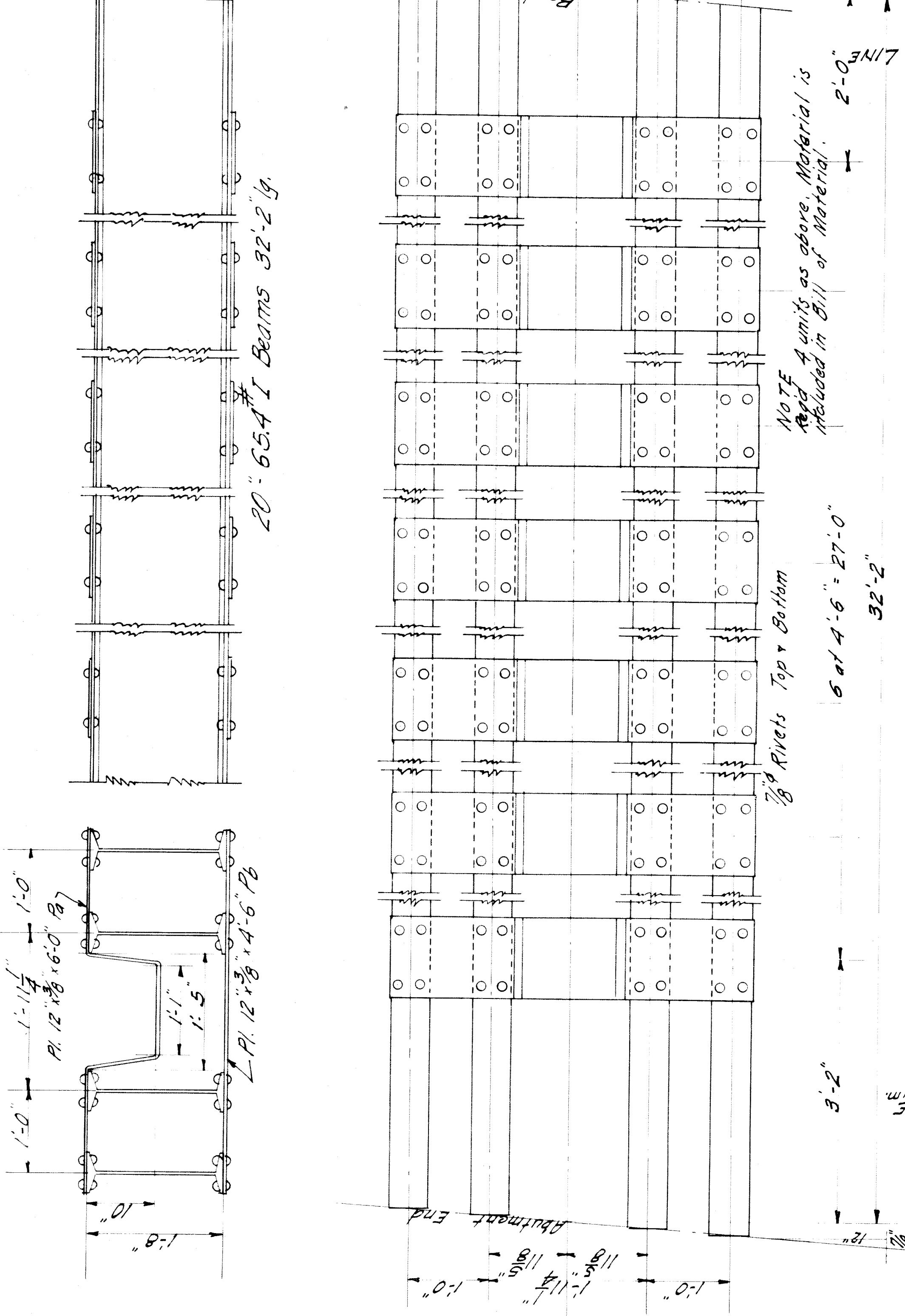
Approved: [Signature]
Chief Engineer D.G.H. & M. Ry
Approved: [Signature]
City Engineer

BILL OF REINFORCING BARS					
LOCATION	No.	MARK	SIZE	LENGTH	BENDING DIAGRAM
DECK	144	d ₁	3/4"	7'-0"	
DECK	48	d ₂	3/4"	4'-0"	
DECK	90	d ₃	3/4"	12'-10"	
DECK (Sidewalk)	90	d ₄	3/4"	9'-4"	
DECK (Sidewalk)	266	d ₅	1/2"	9'-10"	
DECK (for Rolling)	40	d ₆	3/4"	7'-0"	STRAIGHT
RAILING (Bottom)	32	d ₇	1/2"	18'-0"	"
RAILING (Web)	64	d ₈	1/2"	13'-6"	"
BENT (Top)	10	b ₁	1"	30'-0"	
BENT (Top) (Some Arches)	8	b ₂	7/8"	28'-0"	
BENT (Over Arches)	8	b ₃	7/8"	14'-0"	
BENT (Under Arches)	8	b ₄	3/4"	28'-0"	
BENT (Bottom)	8	b ₅	1"	30'-0"	
BENT (Bottom)	76	b ₆	7/8"	8'-6"	
BENT (Columns)	82	c ₁	7/8"	23'-0"	STRAIGHT
BENT (Column Ties)	33	c ₂	1/4"	8'-6"	
BENT (Column Ties)	22	c ₃	1/4"	23'-0"	
BENT (Upper Straps)	36	s ₁	1/2"	26'-0"	
BENT (Lower Straps)	16	s ₂	1/2"	25'-0"	
TUNNEL (Top) Abuts & Bent	46	t ₁	1"	10'-0"	
TUNNEL (Bottom) (Abuts & Bent)	23	t ₂	1"	13'-6"	

BILL OF FLOOR BEAMS					
LOCATION	No.	MARK	SIZE	LENGTH	REMARKS
DECK (St. & Sidewalk)	40	B ₁	20-654 th	32'-2"	No DRILLING
DECK (St. & Ry)	16	B ₂	20-654 th	32'-2"	PUNCHED AS SHOWN (See Detail) SHIP RIVETED COMPLETE

BILL OF WIRE MESH		
LOCATION	No. SHEETS	DESCRIPTION
RAILING	8	TRUSCON RIB METAL No. 4 OR EQUIVALENT
SIDEWALK	44	"
DECK (Bottom)	28	TRUSCON RIB METAL No. 6 OR EQUIVALENT.
DECK (Sidewalk)	60	TRUSCON RIB METAL No. 8 OR EQUIVALENT.
DECK (Protective Coat)	880 sq. ft.	No. 12 GAUGE 4 IN WIRE MESH.

MISCELLANEOUS MATERIAL		
No.	SIZE	DESCRIPTION
BEARING PLATES (BENT)	24 1/2" x 12'-6"	SEE DETAIL
BEARING PLATES (Abutments)	24 1/2" x 12'-4"	"
	12 1/2" x 22'-6"	"
	12 1/2" x 21'-4"	"
ANCHOR BOLTS	3/4" x 18 lg	SWEDGE BOLTS WITH NUTS
CLIPS	192	SEE DETAIL
INSERTS	184	FOR 1/2" BOLTS. SLOTTED INSERTS FOR BLAST PLATES
I-BEAMS FOR TUNNEL	12	12" x 318# x 8'-3 lg. SEE DETAIL Sheet 1.
I-BEAMS FOR TUNNEL	10	8" x 108# x 16'-6 lg. "
I-BEAMS FOR TUNNEL	4	12" x 318# x 8'-3 lg. "
I-BEAMS FOR TUNNEL	5	8" x 108# x 10'-6 lg. "



Approved:

Approved:

City Engineer.

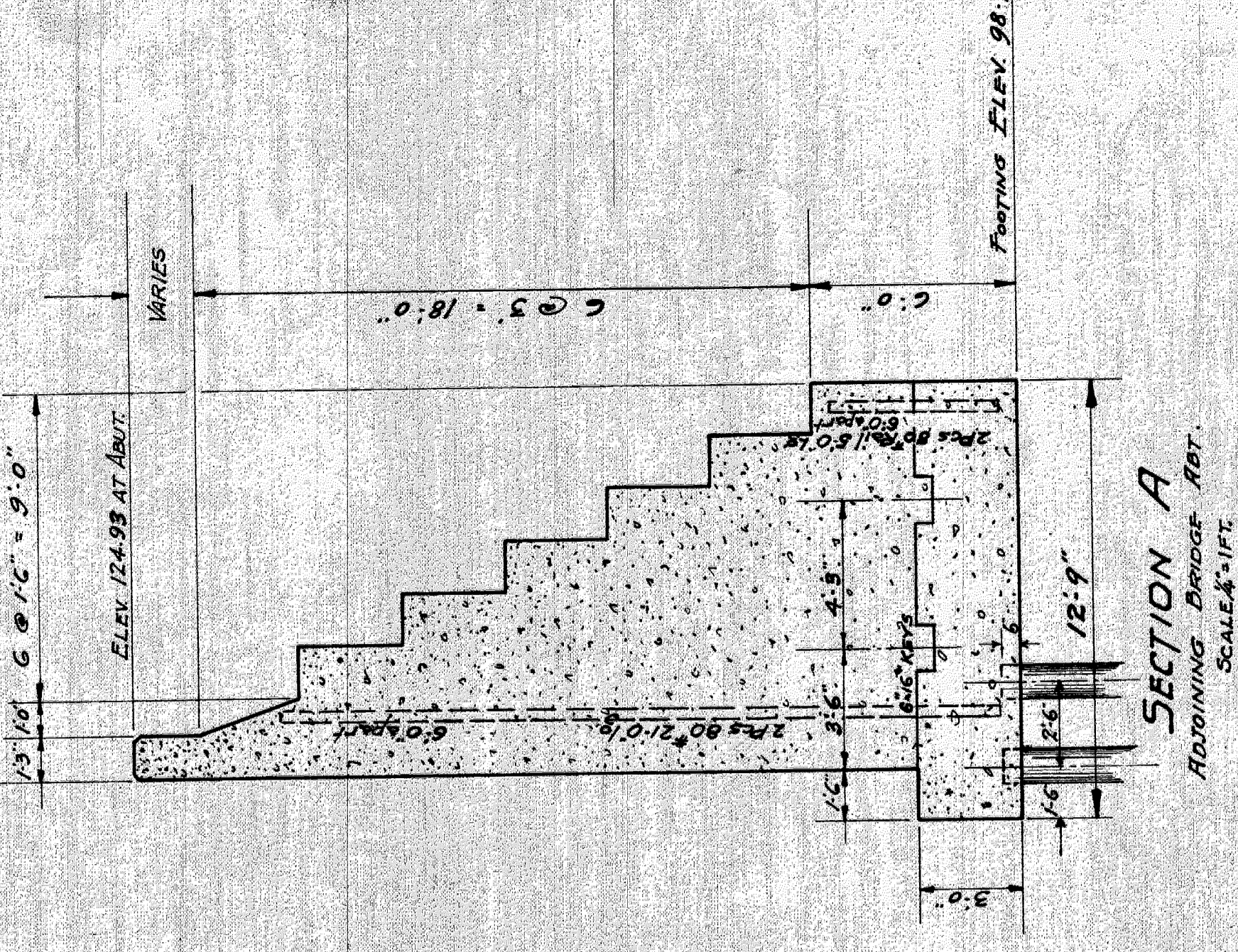
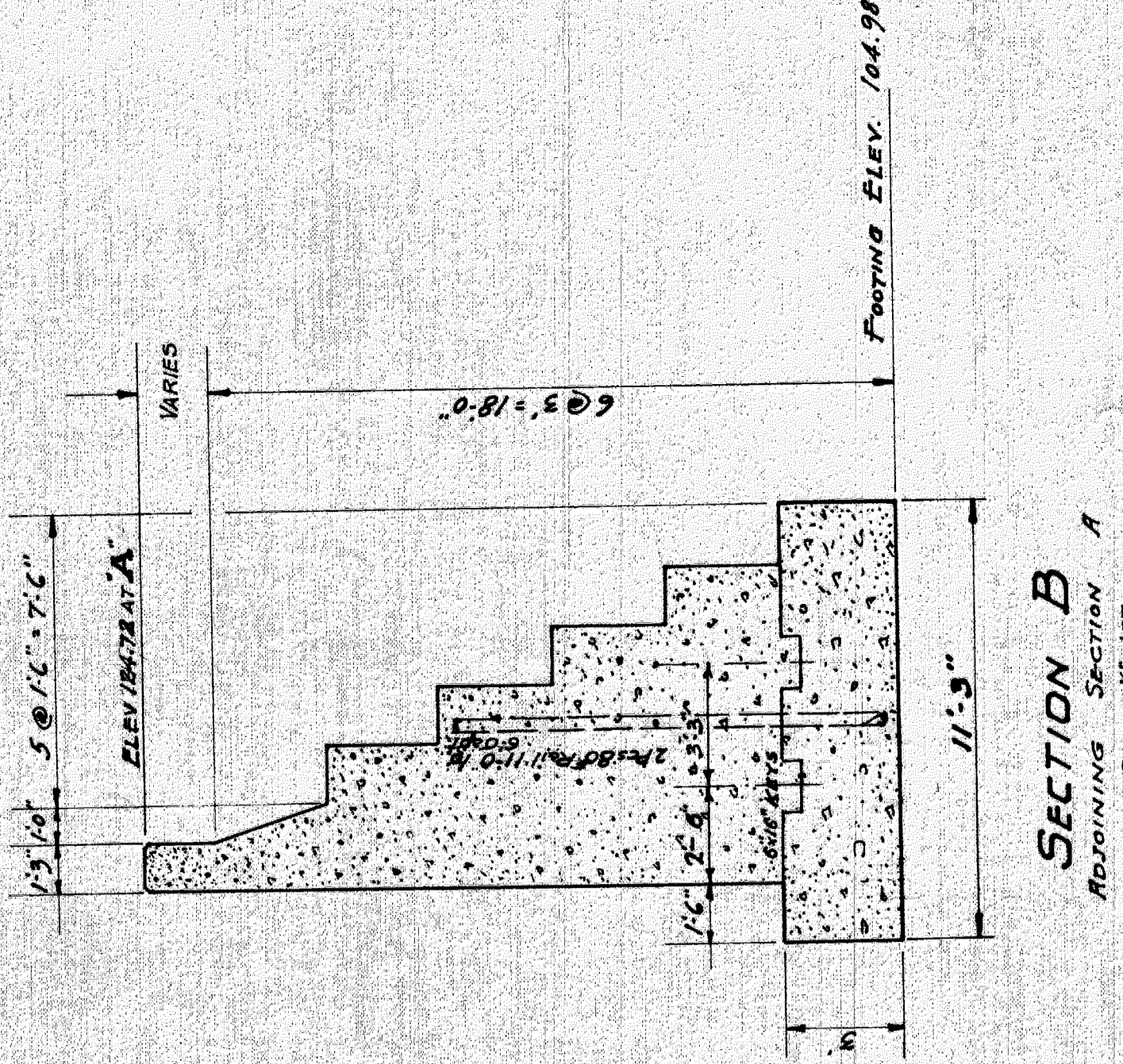
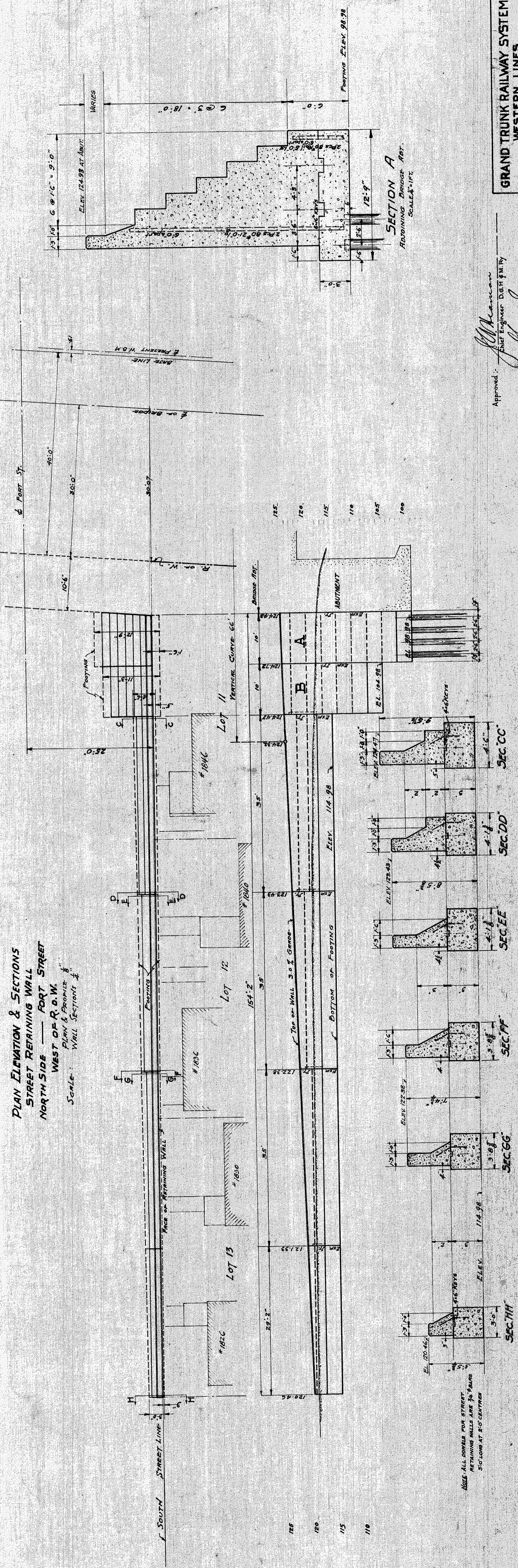
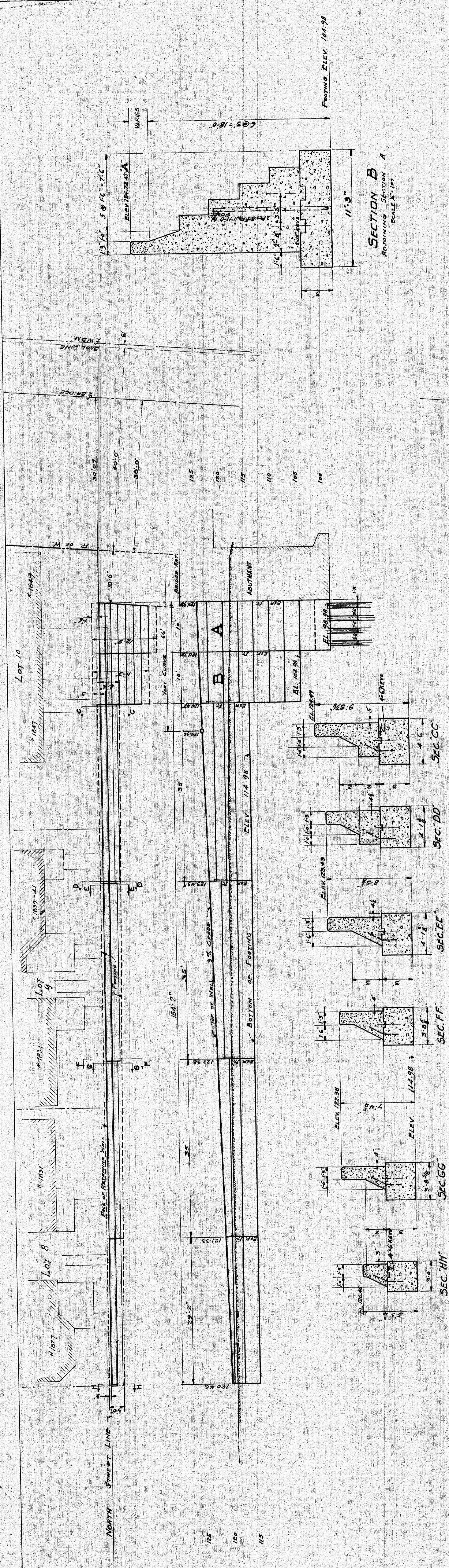
GRAND TRUNK RAILWAY SYSTEM
WESTERN LINES
DEQUINDE GRADE SEPARATION
DETROIT, MICHIGAN
BRIDGE --- FORT STREET

SCALE --- AS SHOWN

OFFICE OF CHIEF ENGINEER
DETROIT, MICHIGAN
MAY 15, 1933

JOURNAL No. W. 8050
FILE 04-462

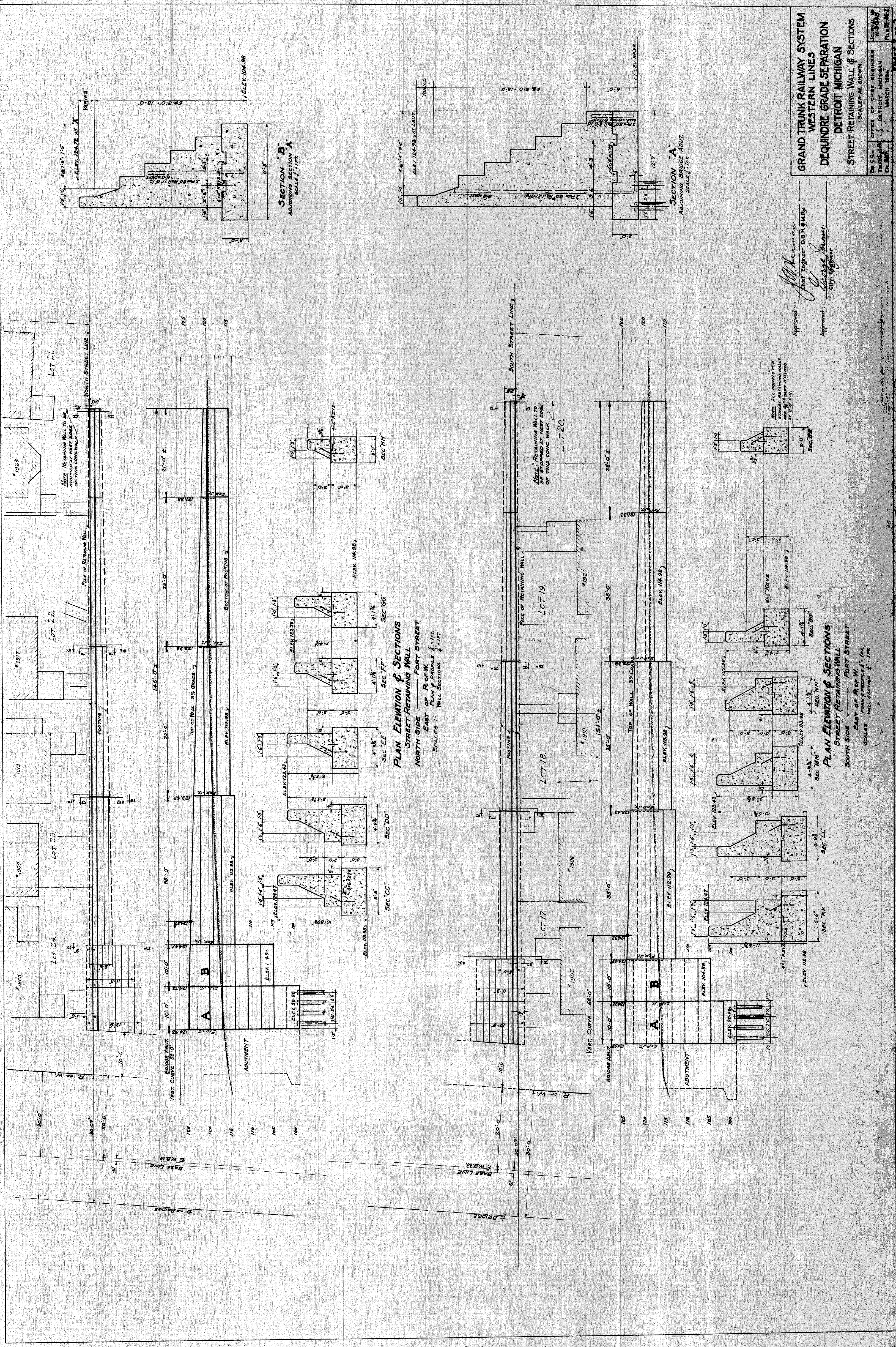
Sheet 3 of 3



Approved: *J. McManis*
 Chief Engineer D.R.H. & P.H.
 Approved: *J. J. [Signature]*
 City Engineer

GRAND TRUNK RAILWAY SYSTEM
WESTERN LINES
DEQUINDRE GRADE SEPARATION
DETROIT MICHIGAN
STREET RETAINING WALL & SECTIONS
 SCALE: 3/4" = 1'-0"
 DR. COL. OFFICE OF CIVIL ENGINEER
 TR. COL. DETROIT, MICHIGAN.
 CH. ENGR. W. J. [Signature]
 PROJECT NO. 114-98
 SHEET 1 OF 2

NOTE: ALL DIMENSIONS FOR STREET
 RETAINING WALLS ARE 3/4" BARS
 SIG LONG AT 2'-0" CENTRE



SECTION "B"
 ADJOINING SECTION "A"
 SCALE 1/4" = 1 FT.

SECTION "A"
 ADJOINING BRIDGE ABUT.
 SCALE 1/4" = 1 FT.

PLAN ELEVATION & SECTIONS
STREET RETAINING WALL
NORTH SIDE EAST OF R. OF W. FORT STREET
 PLAN & PROFILE 1/4" = 1 FT.
 WALL SECTIONS 1/2" = 1 FT.

PLAN ELEVATION & SECTIONS
STREET RETAINING WALL
SOUTH SIDE EAST OF R. OF W. FORT STREET
 PLAN & PROFILE 1/4" = 1 FT.
 WALL SECTIONS 1/2" = 1 FT.

Approved: *J. W. Keenan*
 CHIEF ENGINEER, D.G.M. & M.R.Y.
 Approved: *George J. Jones*
 CITY ENGINEER

NOTE: ALL DIMENSIONS FOR
 STREET RETAINING WALLS
 SHALL BE AS SHOWN
 BY THIS PLAN.