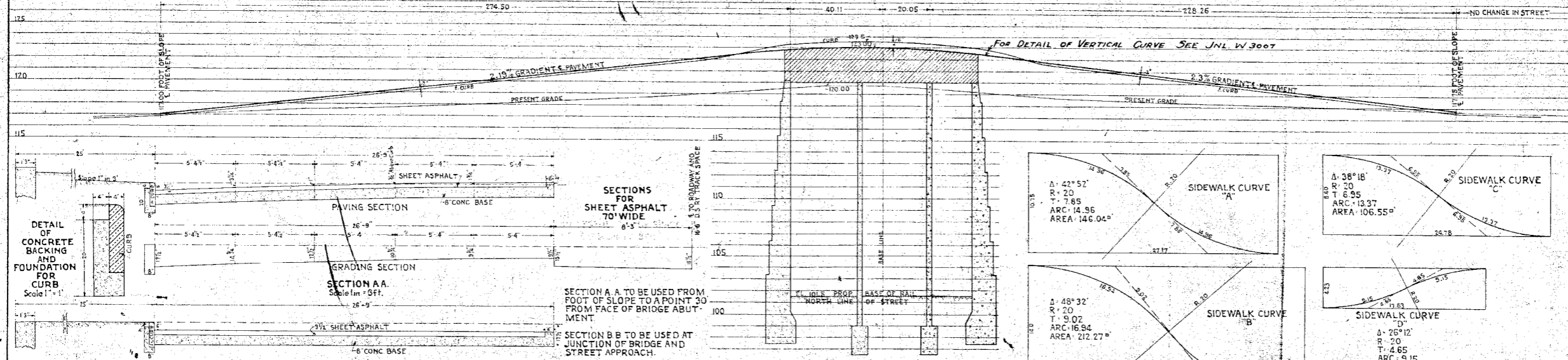


- LEGEND**
- ⊙ Water Shut-off
 - ⊕ Gas Shut-off
 - ⊙ Tree
 - ⊙ Trolley Pole
 - ⊙ P.L.C. Public Lighting Comm. Pole
 - ⊙ Hydrant
 - ⊙ Water Gate



Approved: *[Signature]*
Chief Engineer D.G.H. & M. Ry.

Approved: *[Signature]* May 17, 1923
City Engineer.

**GRAND TRUNK RAILWAY SYSTEM
WESTERN LINES
DEQUINDRE GRADE SEPARATION
DETROIT, MICHIGAN.
GENERAL PLAN JEFFERSON AVE.**

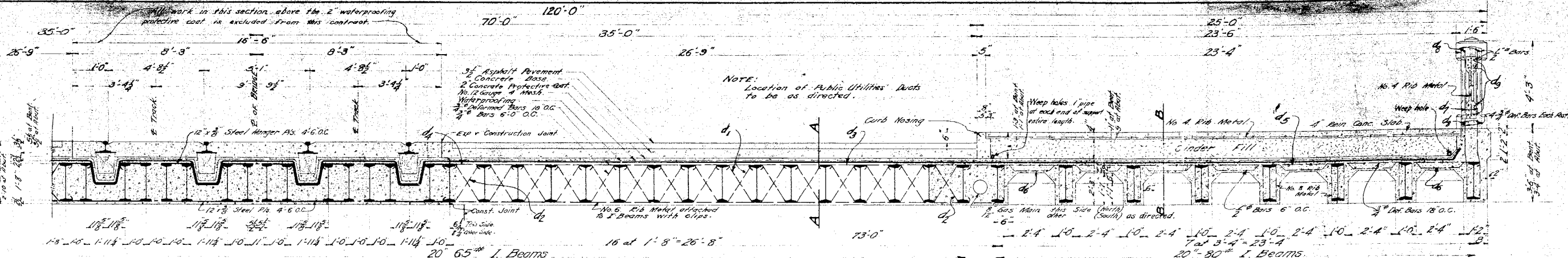
Scale 1" = 20' except as noted.

DR. W. G. H. CHAS. A. H. L.
OFFICE OF CHIEF ENGINEER
DETROIT, MICH.
MAY 1923

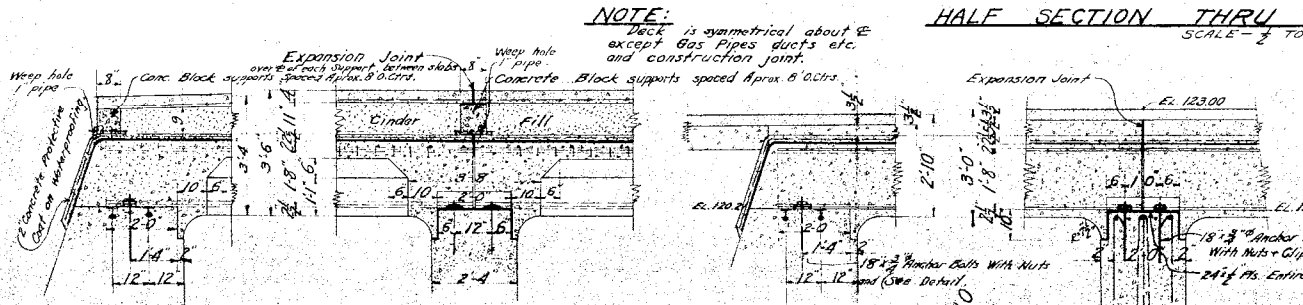
JOURNAL
W. 3006
FILE
D-1-46-2

REVISED June 19, 1923

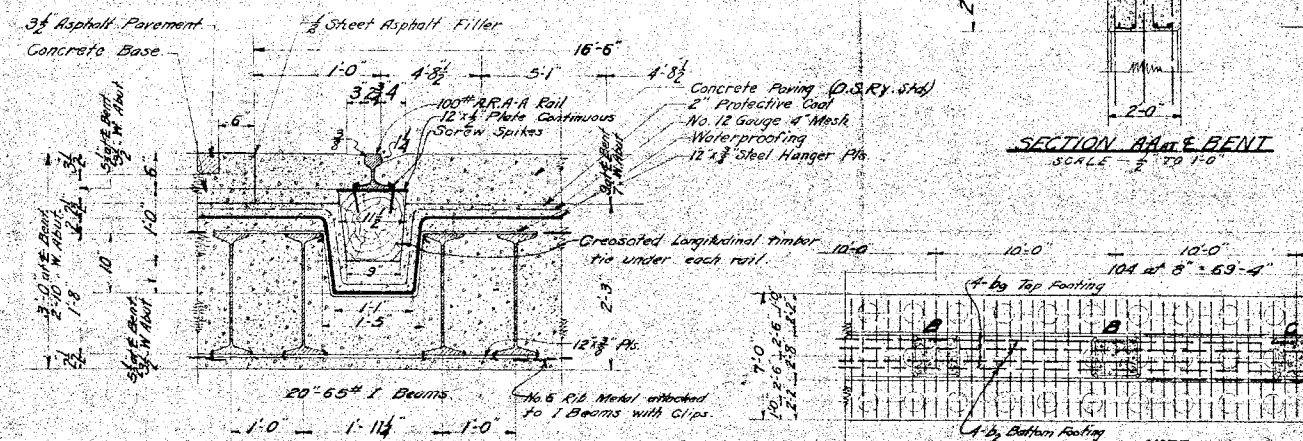
Note: Sidewalks between Orleans St and D.G.H. & M. Ry. to be 10' wide, except in front of Leonard C. Warehouse which will be full width as at present. Outside edge of 10' walks to be 3' from curb on both sides of street. Sidewalks east of Ry. to be rebuilt in present location and to be 8' in width. Sidewalks to be built in accordance with D.P.W. sidewalk specifications.



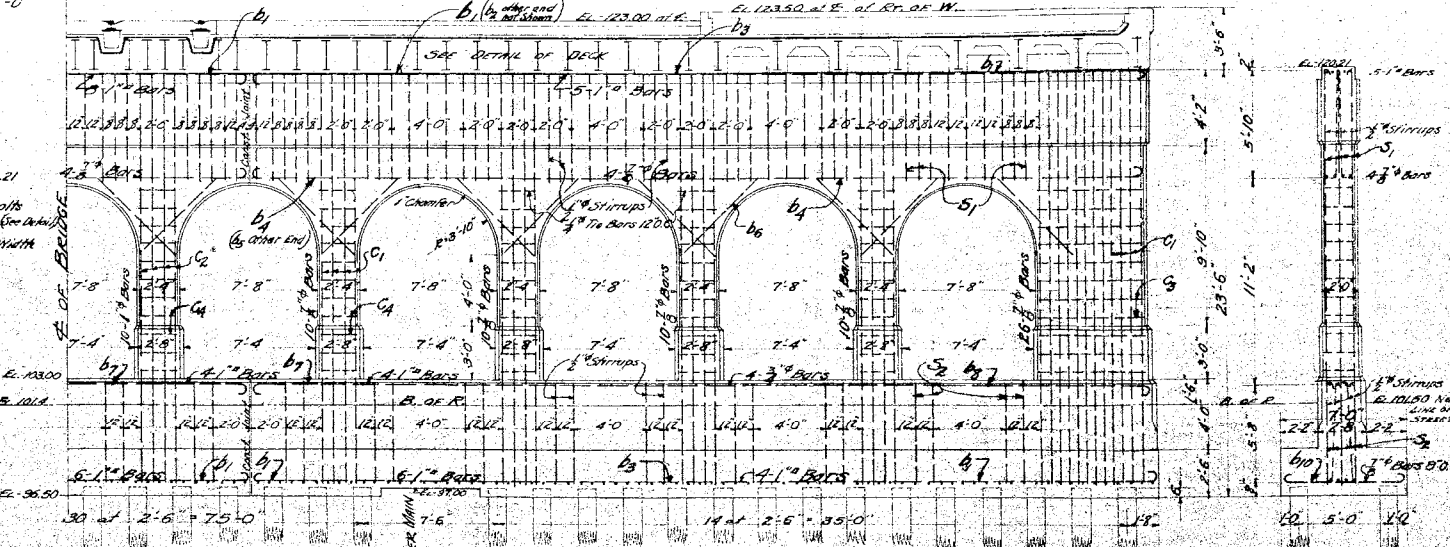
HALF SECTION THRU DECK - NORTH SIDE MAIN SPAN
SCALE - 1/2" TO 1'-0"



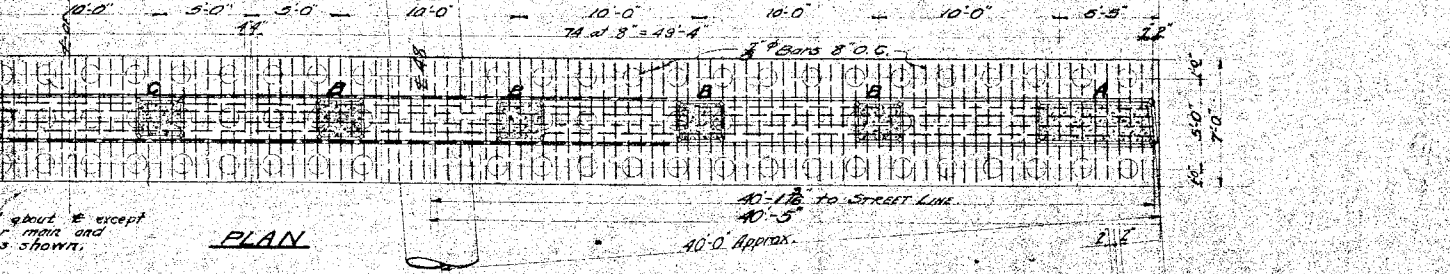
SECTION BB at ABUTMENT WEST OF E OF RIGHT OF WAY
SCALE - 1/2" IN TO 1'-0"



SECTION SHOWING CONSTRUCTION UNDER RAIL - MAIN SPAN
SCALE - 1/2" TO 1'-0"

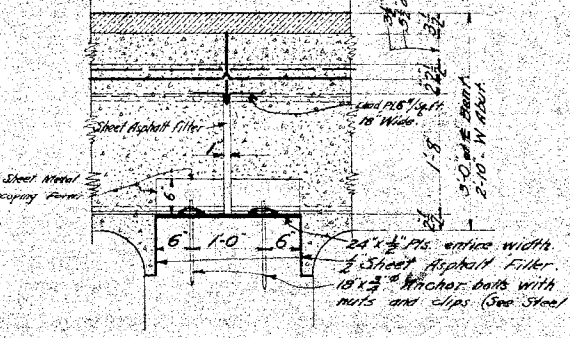


HALF ELEVATION OF BENT SHOWING REINFORCING - NORTH SIDE
SCALE - 1/2" TO 1'-0"

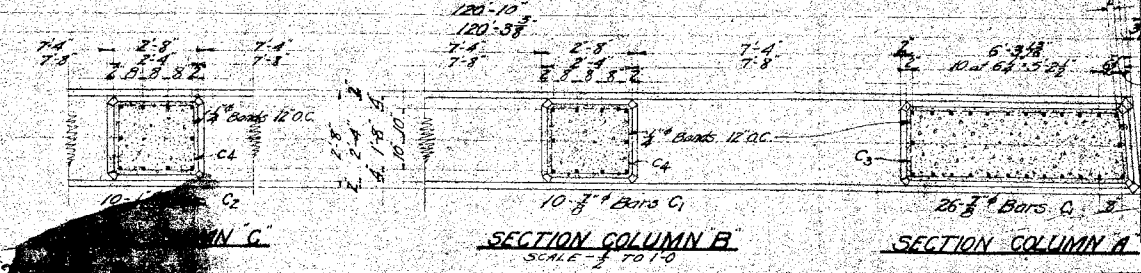


PLAN

TEST HOLE NO. 1	TEST HOLE NO. 2	TEST HOLE NO. 3	TEST HOLE NO. 4	TEST HOLE NO. 5	TEST HOLE NO. 6
100.0	100.0	100.0	100.0	100.0	100.0
90.0	90.0	90.0	90.0	90.0	90.0
80.0	80.0	80.0	80.0	80.0	80.0
70.0	70.0	70.0	70.0	70.0	70.0



SECTION AA at BENT ENLARGED TO SHOW EXPANSION JOINT



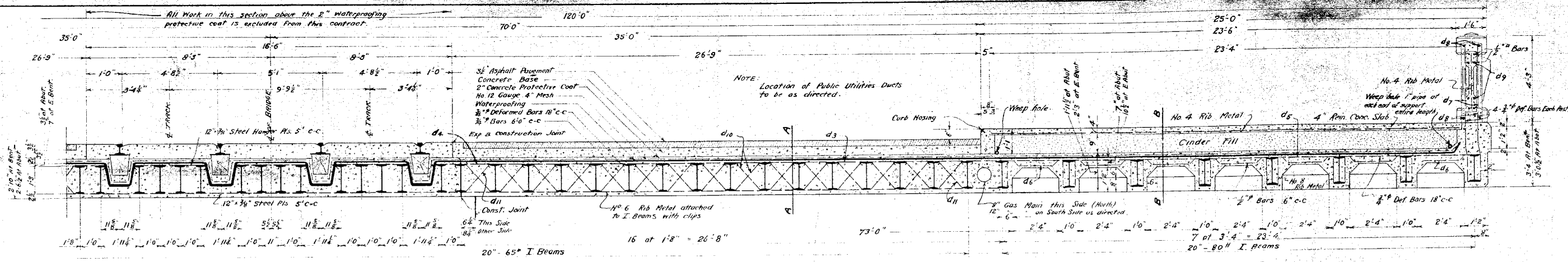
SECTION COLUMN B
SCALE - 1/2" TO 1'-0"

SECTION COLUMN A

Approved: *[Signature]*
Chief Engineer, D.G.H. & M. Ry.
Approved: *[Signature]*
City Engineer
Nov. 17, 1923

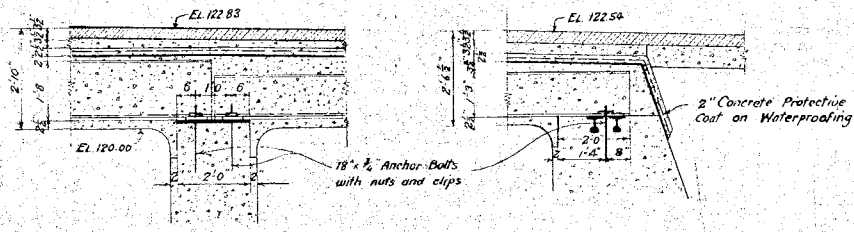
GRAND TRUNK RAILWAY SYSTEM
WESTERN LINES
DEQUINDRE GRADE SEPARATION
DETROIT, MICHIGAN
BRIDGE - JEFFERSON AVE.
SCALE - AS SHOWN

DR - RAW
TR - RAW
EN - ANL

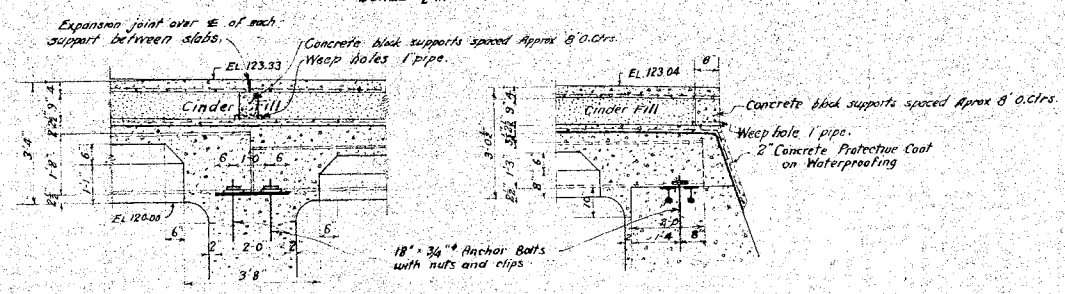


NOTE: Deck is symmetrical about & except Gas pipes, ducts, etc., and construction joint.

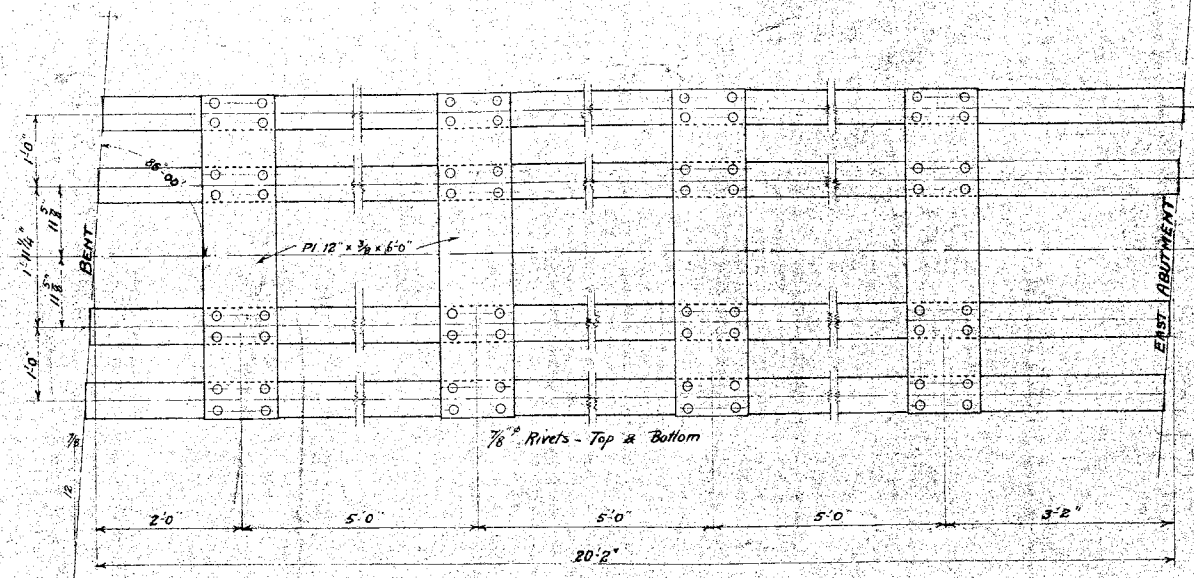
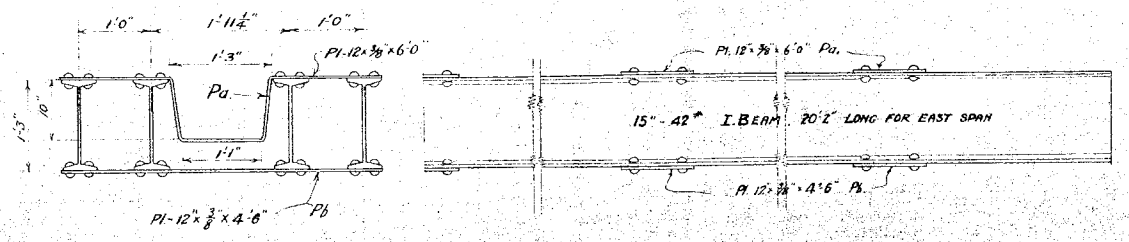
HALF SECTION THRU DECK - NORTH SIDE
SCALE 1/2 IN. = 1 FT.



SECTION A-A THRU EAST BENT AND ABUTMENT
SCALE 1/2 IN. = 1 FT.

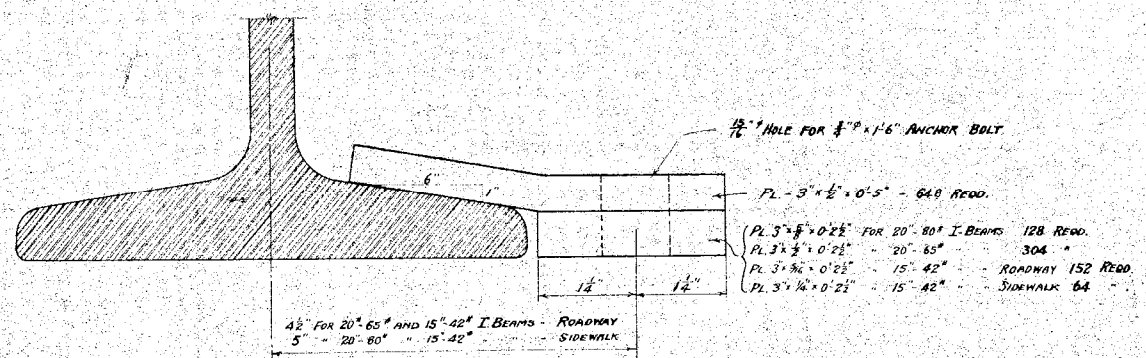


SECTION B-B THRU EAST BENT AND ABUTMENT
SCALE 1/2 IN. = 1 FT.



DETAIL OF I-BEAM SPAN FOR STREET RAILWAY
SCALE 1 IN. = 1 FT.

4 Units required like above riveted complete for East Span. Material is included in Bill of Material.



DETAIL FOR I-BEAM CLIPS
SCALE 1 IN. = 1 FT.

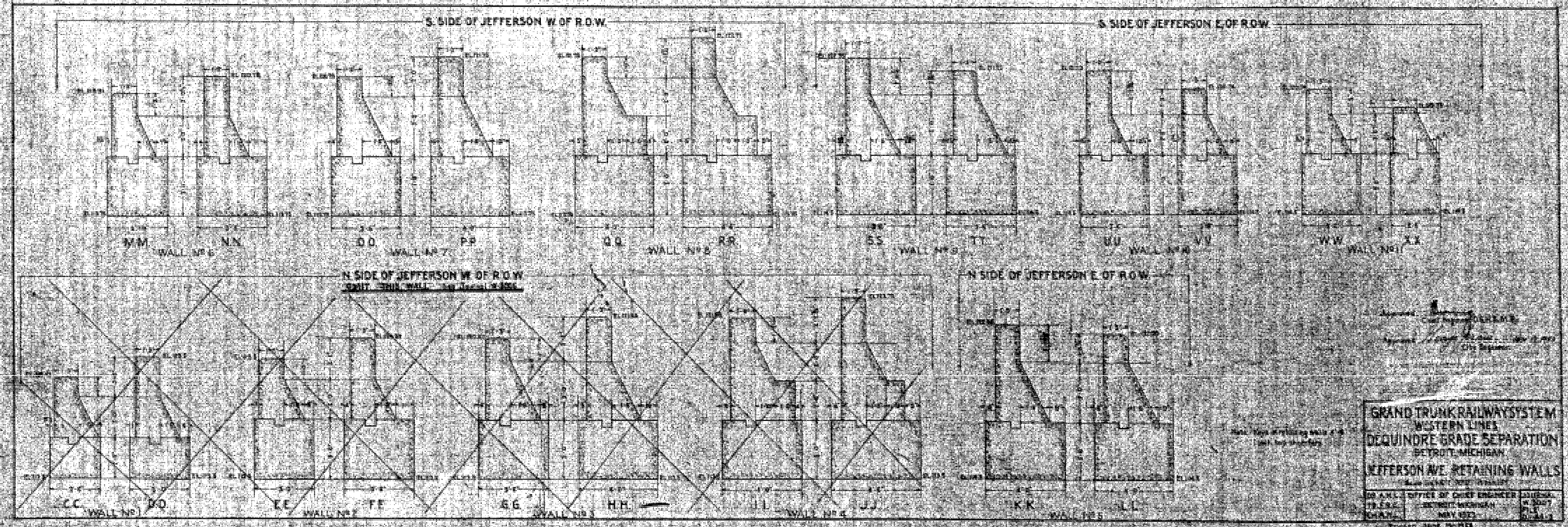
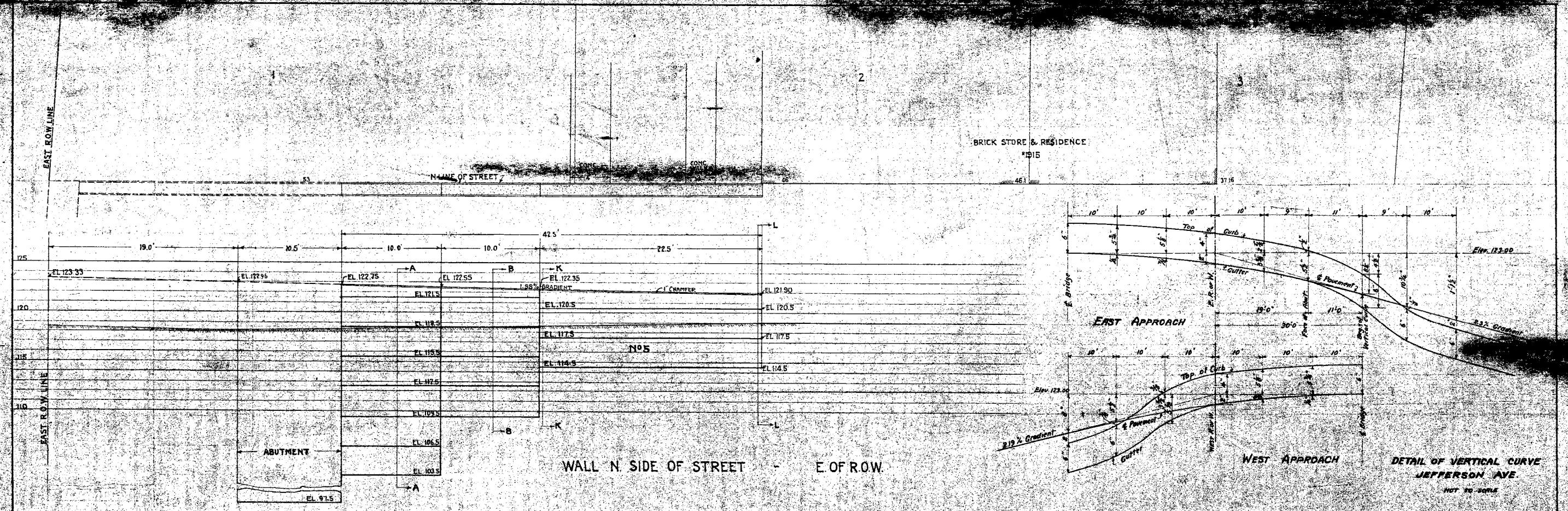
Approved: *[Signature]*
CHIEF ENGINEER D.G.H. & M.R.Y.

Approved: *[Signature]*
CITY ENGINEER

NOV 17, 1923

GRAND TRUNK RAILWAY SYSTEM
WESTERN LINES
DEQUINDRE GRADE SEPARATION
DETROIT, MICHIGAN.
BRIDGE-JEFFERSON AVE.
SCALE - AS SHOWN

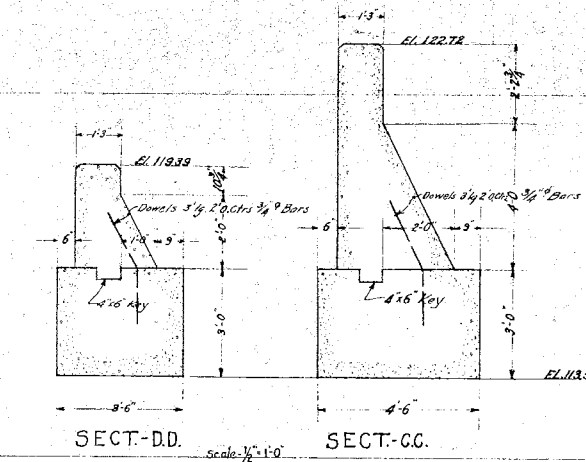
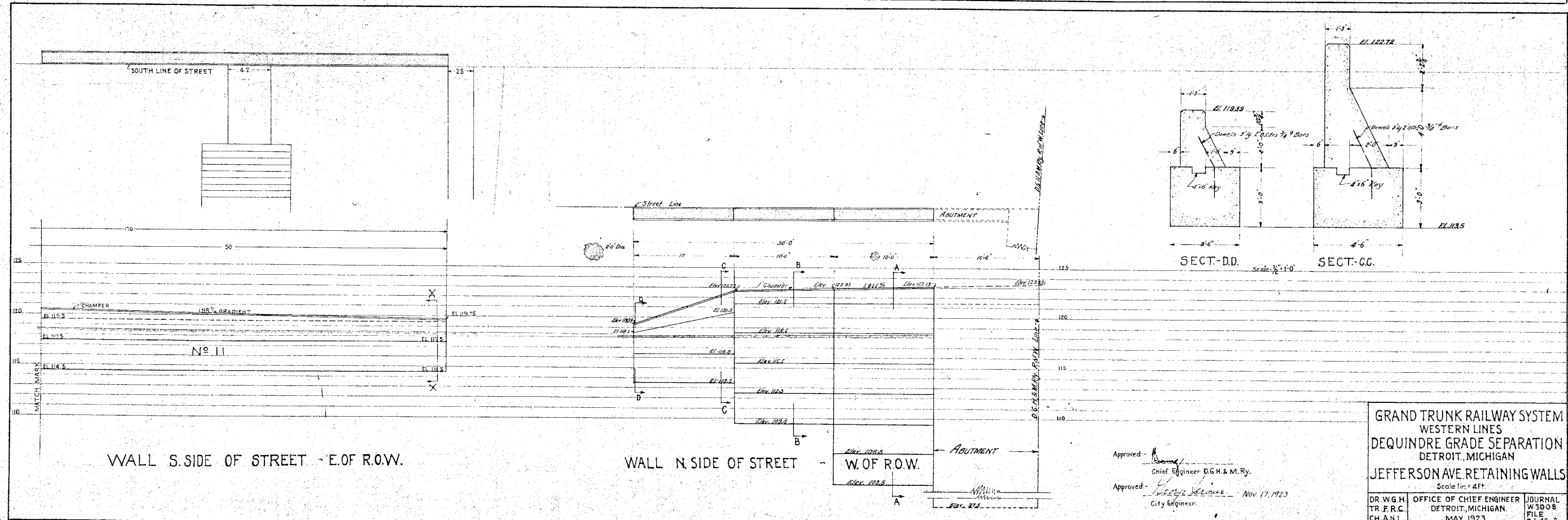
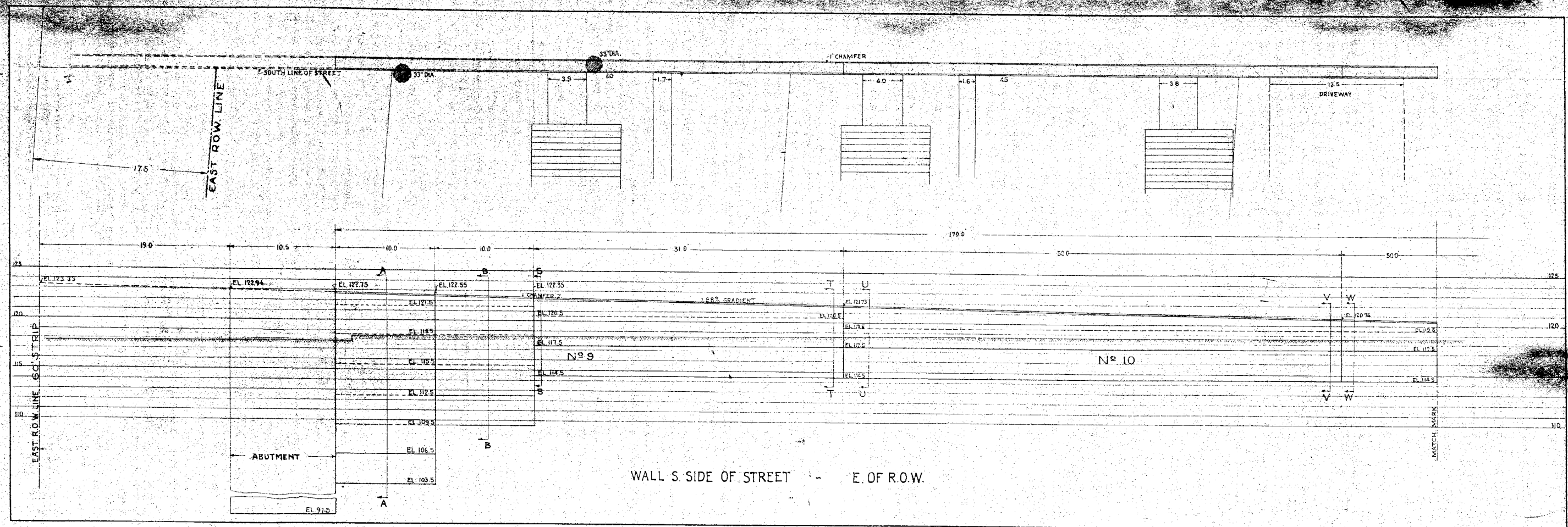
DR. R.A.W.	OFFICE OF CHIEF ENGINEER	JOURNAL No.
TR. W.G.H.	DETROIT, MICHIGAN.	W-3018
CH. A.N.L.	JUNE 18-1923	FILE D-462



GRAND TRUNK RAILWAY SYSTEM
 WESTERN LINES
 DEQUINDRE GRADE SEPARATION
 DETROIT, MICHIGAN
 JEFFERSON AVE. RETAINING WALLS

DESIGNED BY: [Signature]
 CHECKED BY: [Signature]
 APPROVED BY: [Signature]
 CHIEF ENGINEER

NO. 4411 OFFICE OF CHIEF ENGINEER
 DETROIT, MICHIGAN
 MAY 1923



Approved: *[Signature]*
 Chief Engineer D.G.H. & M. Ry.
 Approved: *[Signature]* Nov 17, 1923
 City Engineer.

GRAND TRUNK RAILWAY SYSTEM
 WESTERN LINES
 DEQUINDRE GRADE SEPARATION
 DETROIT, MICHIGAN
 JEFFERSON AVE. RETAINING WALLS
 Scale 1" = 4' FT.
 DR. W. G. H. TR. F. R. C. CH. A. N. L. OFFICE OF CHIEF ENGINEER DETROIT, MICHIGAN. MAY, 1923. JOURNAL W 3008 FILE D. 146-2

REVISED JUNE 19, 1923

