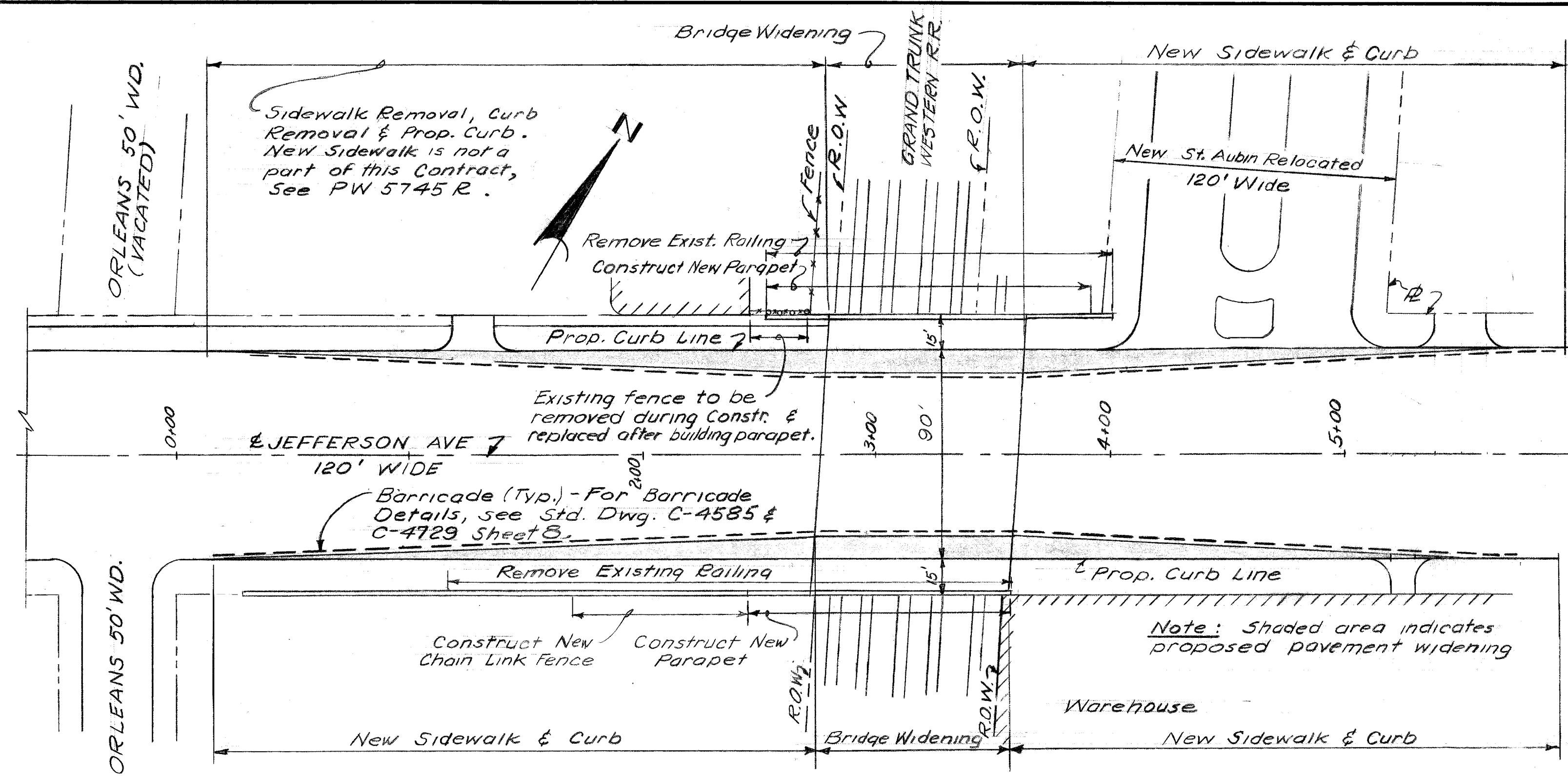
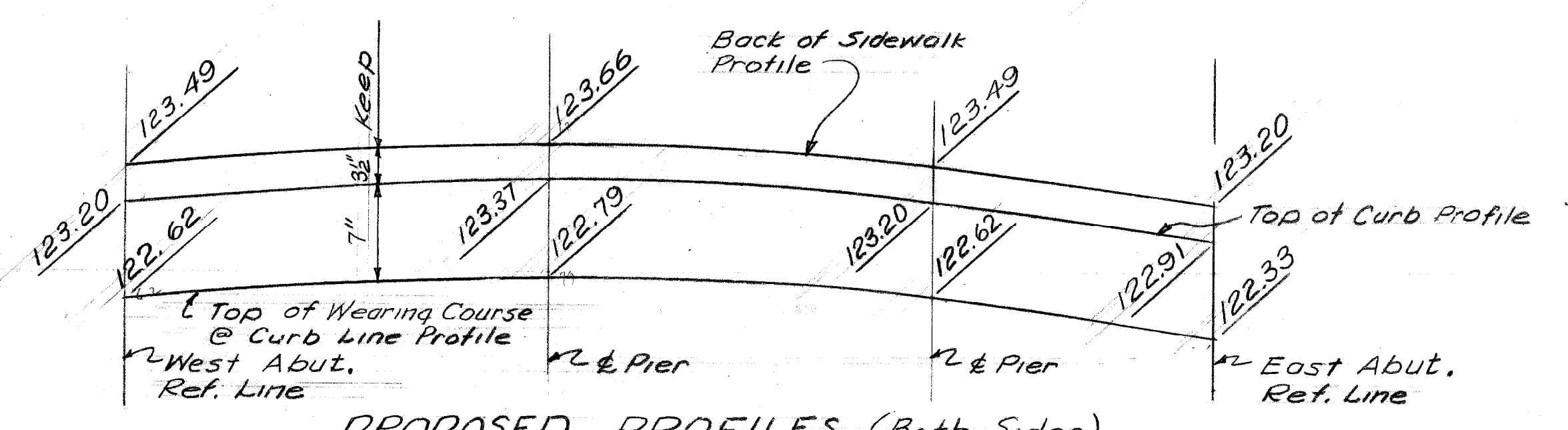


**LOCATION PLAN**  
Scale: 1" = 40'

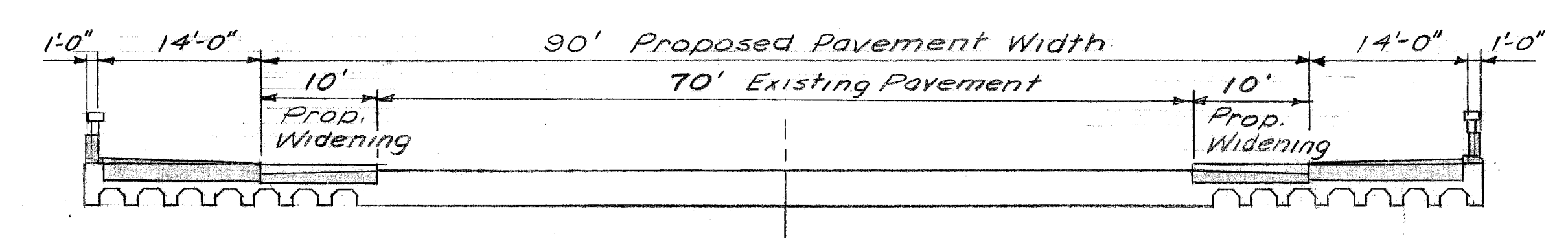


**PLAN of PROPOSED WORK**  
Scale: 1" = 40'



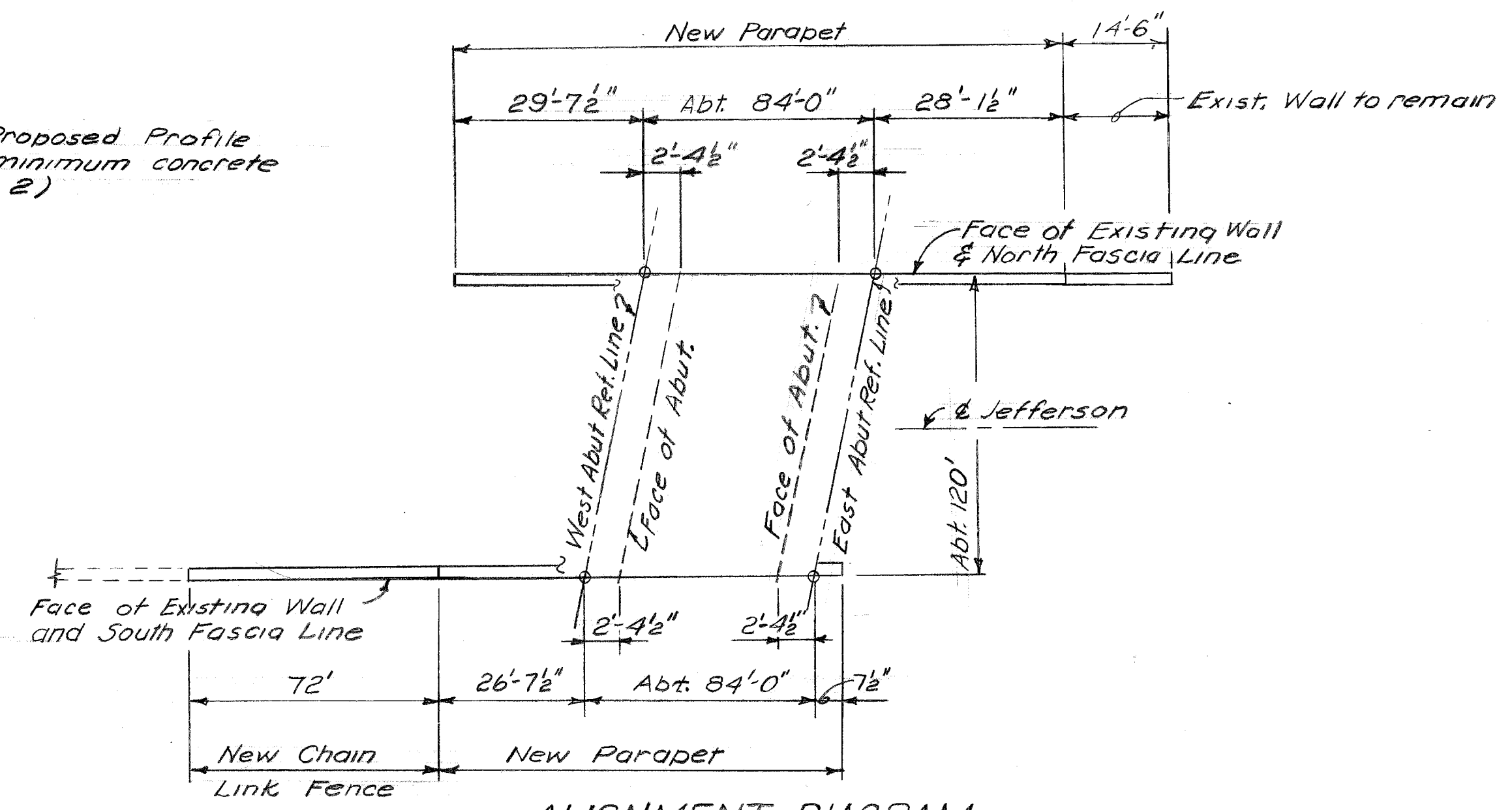
**PROPOSED PROFILES (Both Sides)**  
Scale: 1" = 1'-0" Vert.  
1" = 10'-0" Hor.

Note:  
The Engineer shall field-adjust Proposed Profile elevations if required to keep 5" minimum concrete slab. (See Section B-B sheet 2)



**SECTION THRU BRIDGE DECK**  
Scale: 3/32" = 1'-0"

Note:  
Shaded area indicates proposed work



**ALIGNMENT DIAGRAM**  
No Scale

COORD	DESCRIPTION	DRN	CHKD	APVD	DATE
	REVISIONS LOCATED BY COORDINATES ON SHEET				

DESIGNED BY	Locher
DRAWN BY	Locher
TRACED BY	-
CHECKED BY	STURM

APPROVED:	<i>C. C. Adlner</i> STRUCTURAL ENGINEER
	<i>afred Bernarducci</i> ASSOCIATE CITY ENGINEER
	CITY ENGINEER

**CITY OF DETROIT**  
DEPARTMENT OF PUBLIC WORKS  
HIGHWAY & EXPRESSWAY DIVISION  
**BRIDGE WIDENING**

**JEFFERSON AVE BRIDGE X068**  
OVER  
**GT.W.R.R.**  
**GENERAL PLAN OF SITE**

SHEET	1	OF	8	SHEETS
JOB No.	PW 5752			
DRWG No.	C-101			
DATE	OCT. 1966			

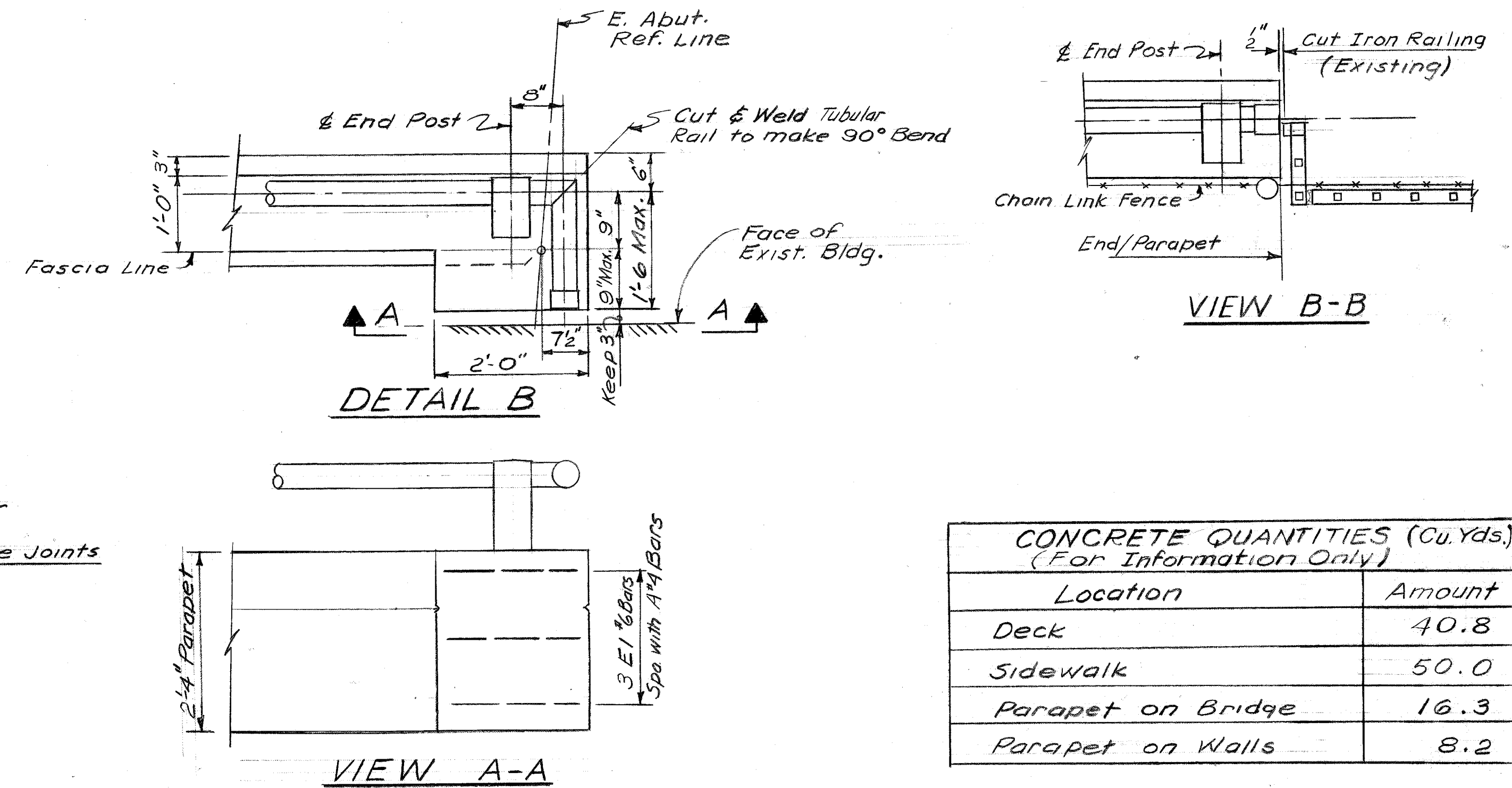
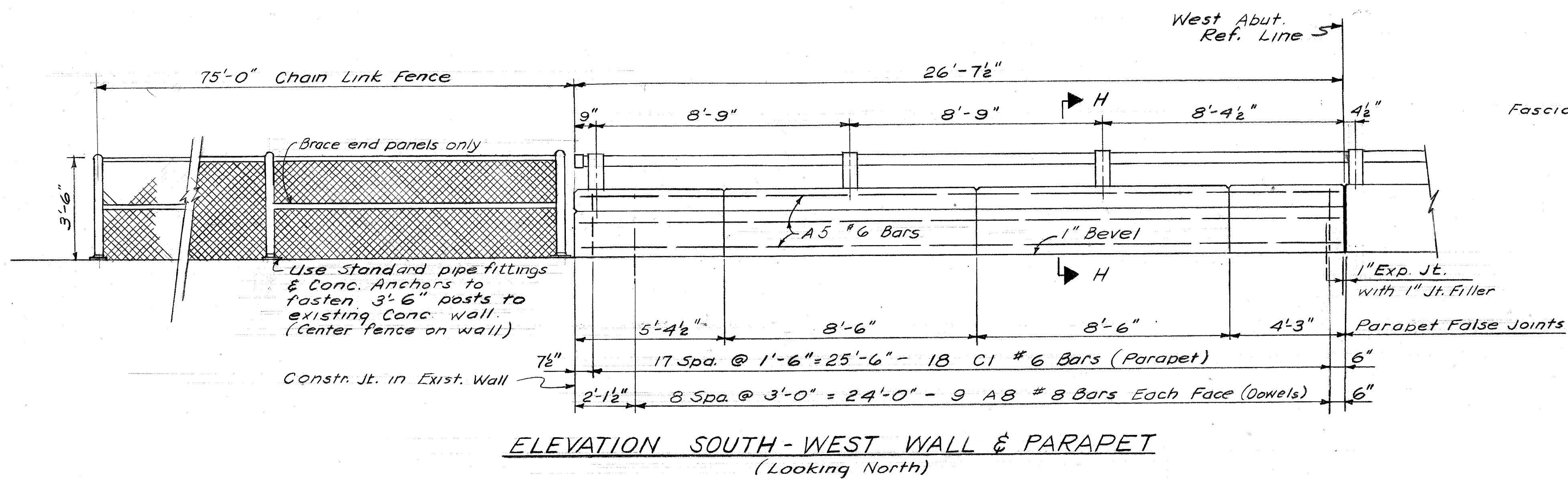
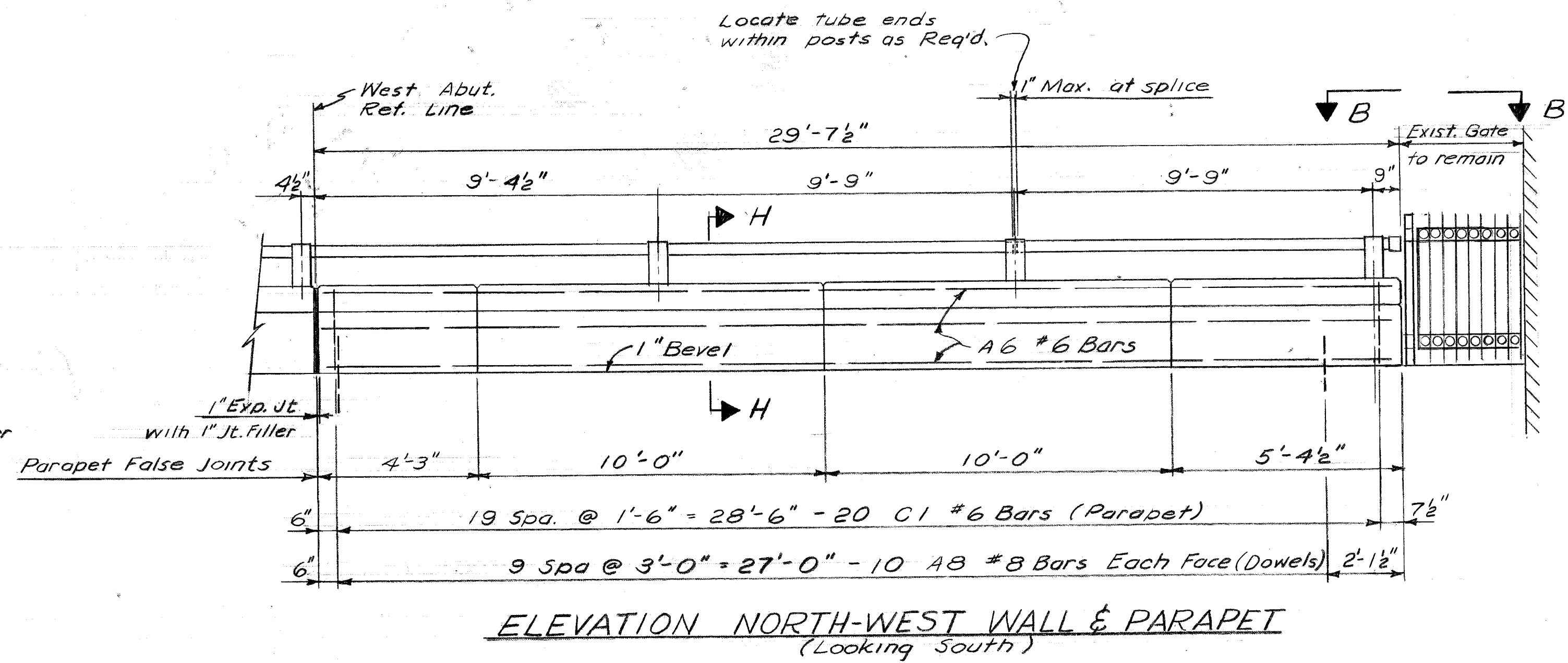
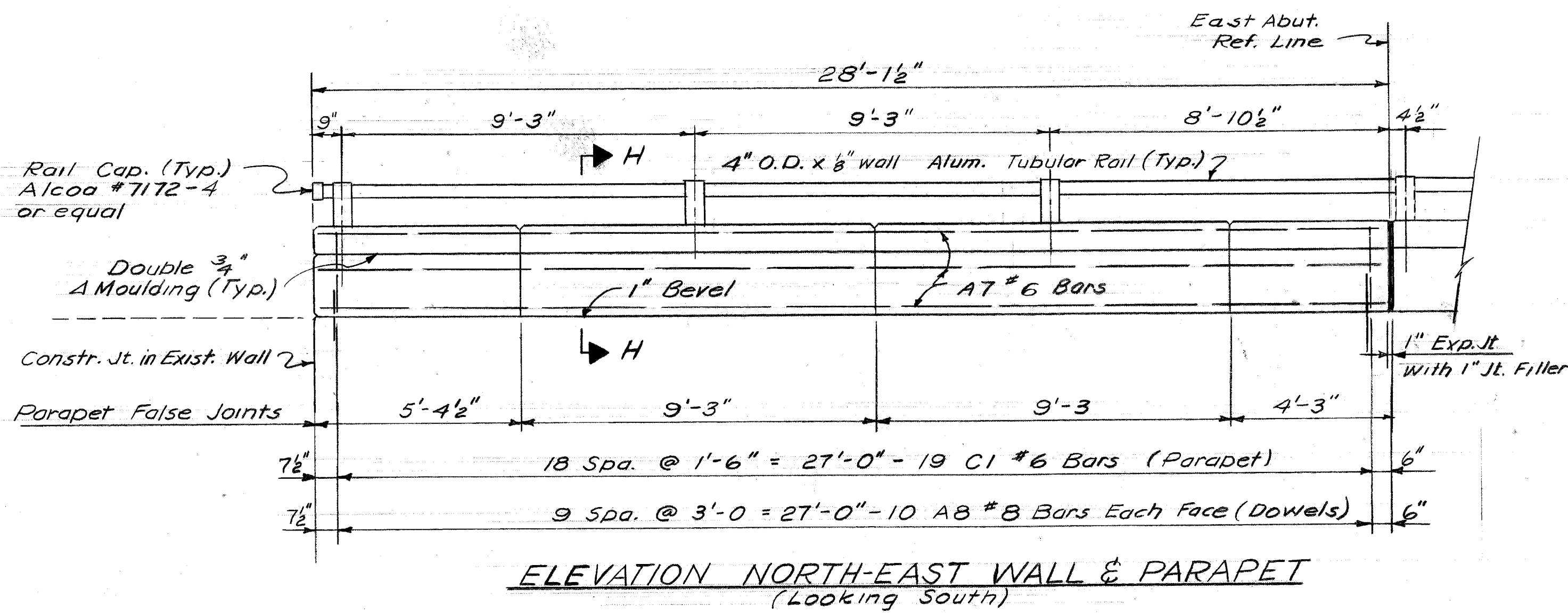




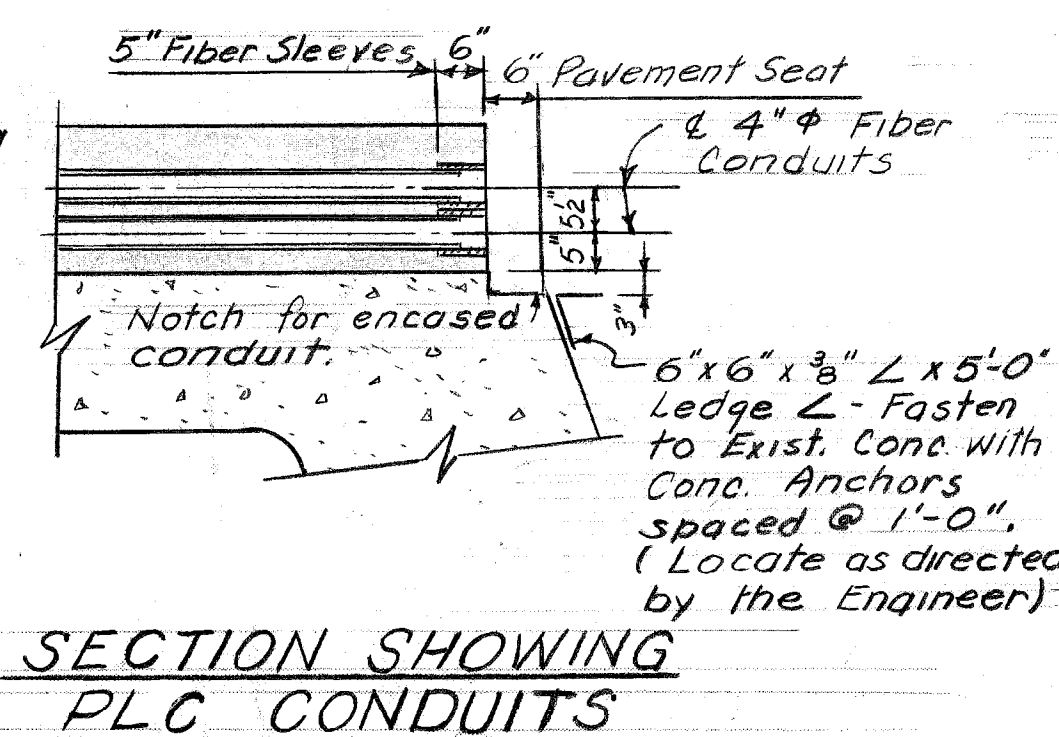
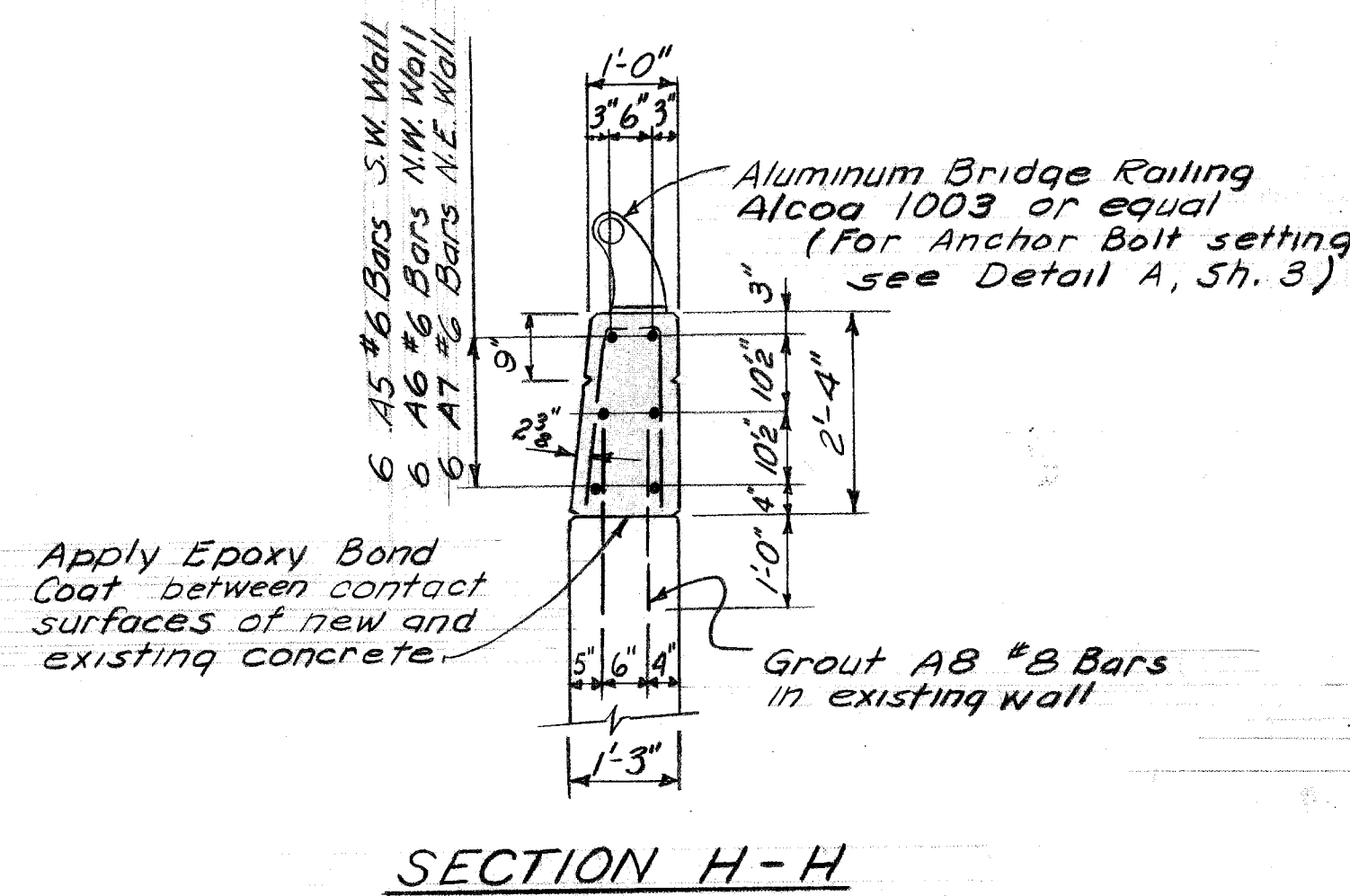
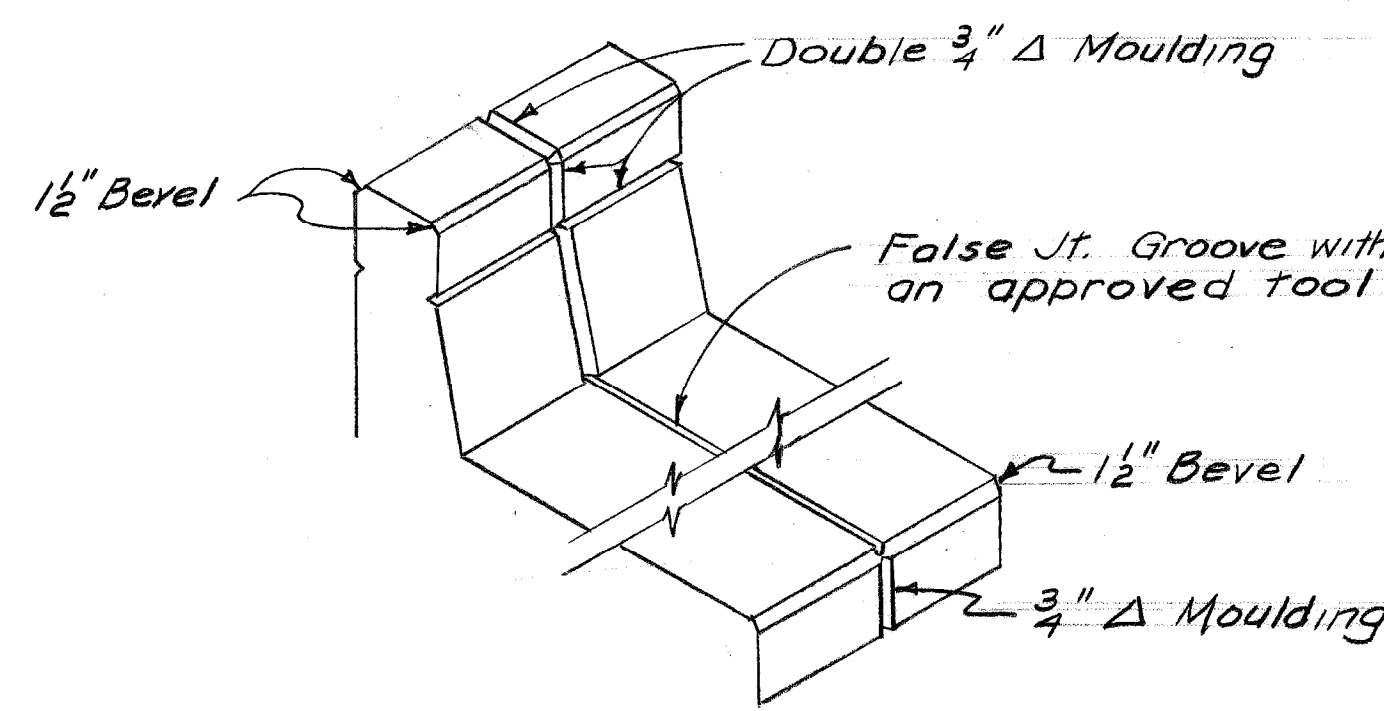








CONCRETE QUANTITIES (Cu. Yds.) (For Information Only)	
Location	Amount
Deck	40.8
Sidewalk	50.0
Parapet on Bridge	16.3
Parapet on Walls	8.2

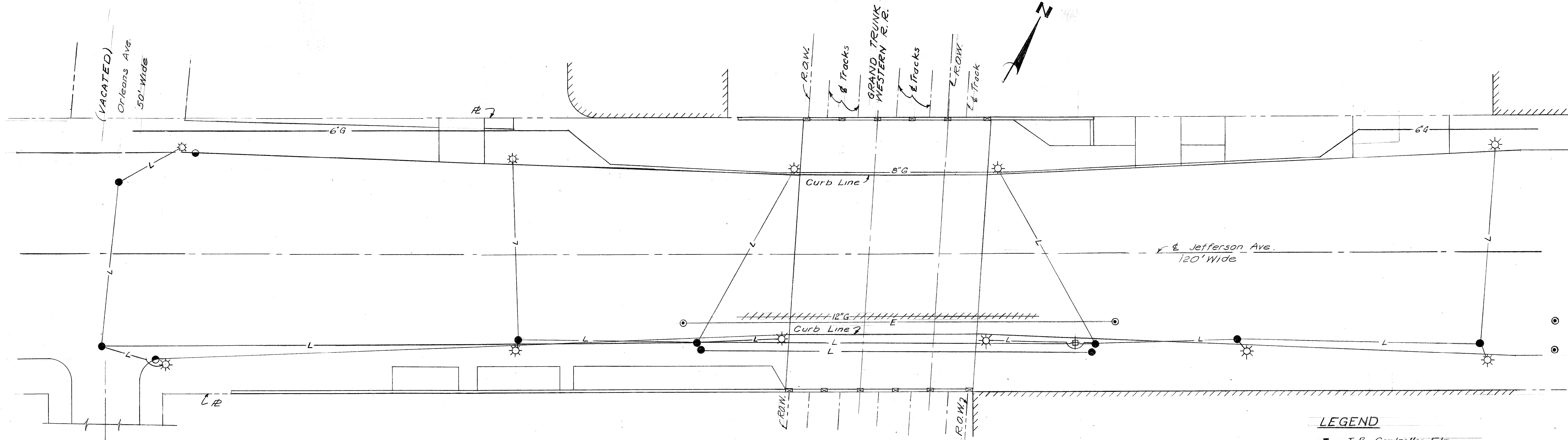


MISCELLANEOUS QUANTITIES (For Information Only)		
Item	Amount	Unit
Stud Shear Connectors-3/4" x 5"	2 016	Each
Stud Shear Connectors-3/4" x 7"	640	Each
Non-metallic Waterstop	71	Sq. Ft.
Bridge Railing-Fabrication & Erection	253	Lin. Ft.
Bituminous Wearing Course	43	Tons
Epoxy Bond Coat	50	Gals
Chain Link Fence	75	Lin. Ft.
8" x 12" x 12" Structural Tile	1640	Each

CITY OF DETROIT DEPARTMENT OF PUBLIC WORKS HIGHWAY & EXPRESSWAY DIVISION BRIDGE WIDENING		JEFFERSON AVE. BRIDGE 1068 OVER GTWPP MISCELLANEOUS DETAILS		SHEET 4 OF 8 SHEETS JOB No. PW 5752 DRWG No. C-104 DATE NOV. 1966
DESIGNED BY: Locher DRAWN BY: Locher TRACED BY: - CHECKED BY: STURM	APPROVED: <i>C. C. Sideman</i> STRUCTURAL ENGINEER <i>afred Bernarducci</i> ASSOCIATE CITY ENGINEER CITY ENGINEER			

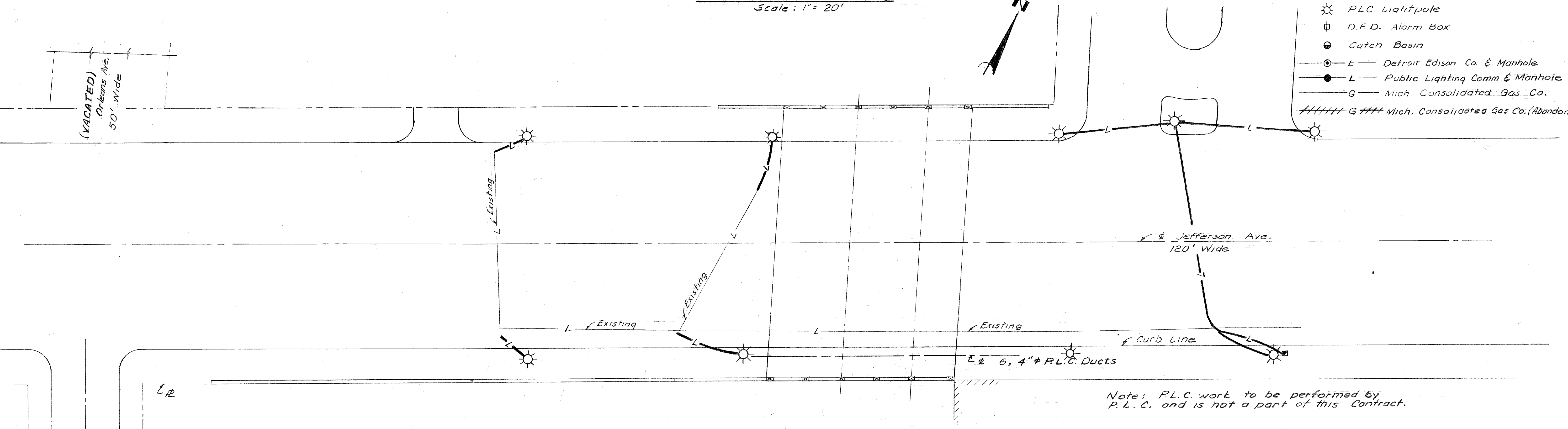
X068





UTILITY PLAN (Existing)  
Scale: 1" = 20'

- LEGEND**
- T.B. Controller Fdn.
  - ☼ PLC Lightpole
  - ⊕ D.F.D. Alarm Box
  - Catch Basin
  - E — Detroit Edison Co. & Manhole
  - L — Public Lighting Comm. & Manhole
  - G — Mich. Consolidated Gas Co.
  - ////// G //// Mich. Consolidated Gas Co. (Abandon)



UTILITY PLAN (Proposed Locations)  
Scale: 1" = 20'

COORD.	DESCRIPTION	DEM.	CHG.	AP'D.	DATE

REVISIONS LOCATED BY COORDINATES ON SHEET

DESIGNED BY	Locher
DRAWN BY	Locher
TRACED BY	-
CHECKED BY	STURM

APPROVED:  
*R. L. Adams*  
STRUCTURAL ENGINEER  
*Alfred Bonarducci*  
ASSOCIATE CITY ENGINEER  
CITY ENGINEER

**CITY OF DETROIT**  
DEPARTMENT OF PUBLIC WORKS  
HIGHWAY & EXPRESSWAY DIVISION  
**BRIDGE WIDENING**

**JEFFERSON AVE. BRIDGE X068**  
OVER  
G.T.W.R.R.  
**EXISTING UTILITIES AND PROPOSED ALTERATIONS**

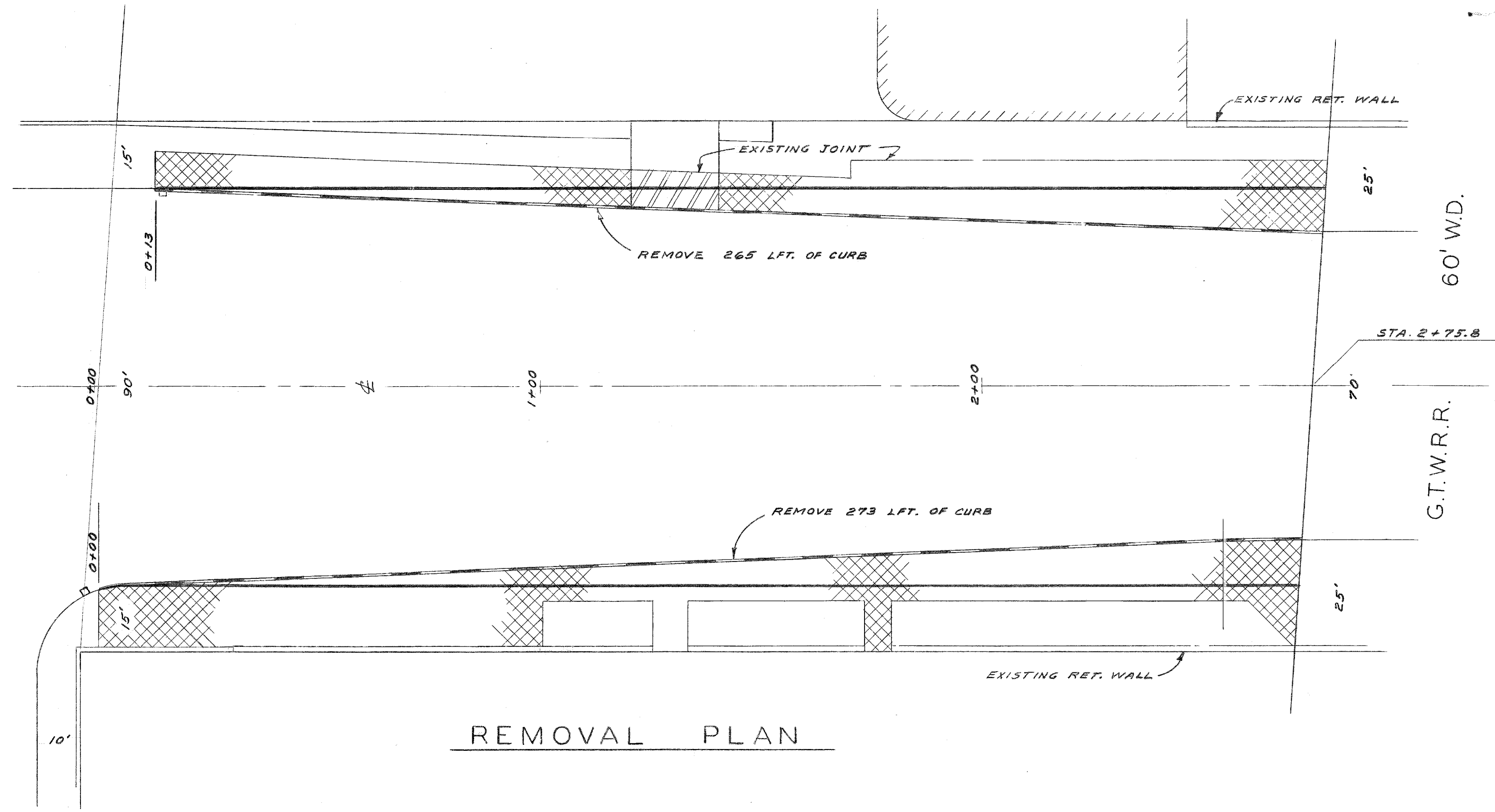
SHEET 5 OF 8 SHEETS
JOB No. PW 5752
DRWG No. C-105
DATE OCT. 1966



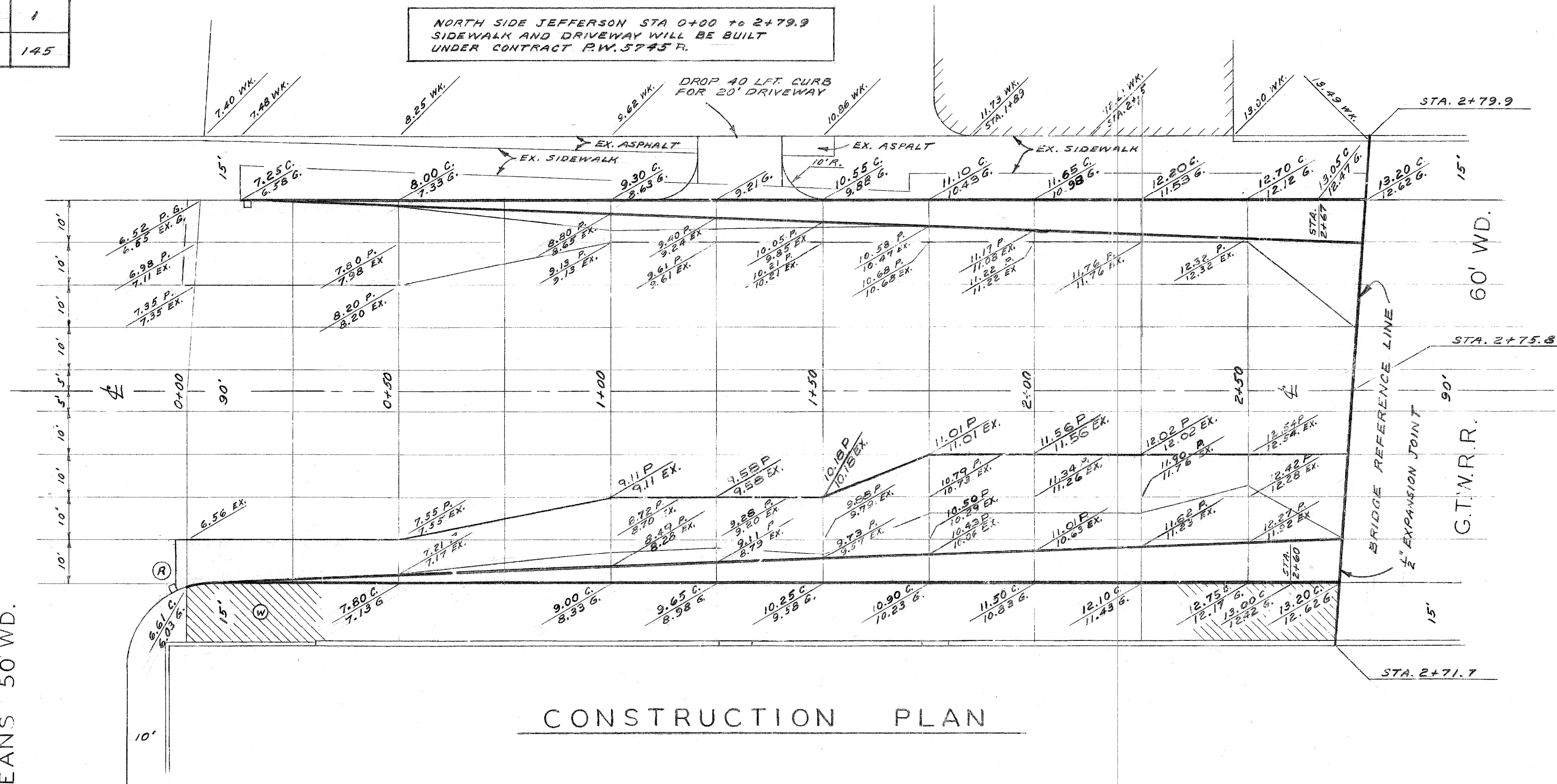
FOR INFORMATION ONLY

NO.	DESCRIPTION OF ITEM	UNIT	QUANTITIES		
			SHEET # 6	SHEET # 7	TOTAL
1	EXCAVATION	CYD.	175	134	309
2	SIDEWALK REMOVAL	SFT.	6081	6238	12319
3	DRIVEWAY REMOVAL	SFT.	156	1560	1716
4	FILL (GRADE A)	CYD.	35	10	45
5	CURB REMOVAL	LFT.	538	462	1000
6	PAV'T. - 10" UNIF. - NO CURB	SYD.	300	252	552
7	PAV'T. - 10" UNIFORM WITH INT. CURB	SYD.	16	16	32
8	SEPARATE CURB	LFT.	404	258	662
9	TEST CORES	EA.	2	2	4
10	STRIPPING ASPHALT SURFACE	SYD.	638	764	1402
11	SIDEWALK - 4" STANDARD	SFT.	3959	4339	8298
12	DRIVEWAY - 8" STANDARD	SFT.		566	566
13	BOND COAT	GAL.	160	193	353
14	RESURFACING MIXTURES IN PLACE (ALL NATURAL AGGREGATES)				
	a). FINE BINDER COURSE	TON	39	44	83
	b). WEARING COURSE - 31 A	TON	77	102	179
15	RESURFACING MIXTURES IN PLACE (ALL SLAG AGGREGATES)				
	a). FINE BINDER COURSE	TON	36	40	76
	b). WEARING COURSE - 31 A	TON	73	96	169
16	CATCHBASIN - RESETTING	EA.	1		1
17	* COLD PATCHING	SYD	145		145

\* SEE NOTE NO. 4



REMOVAL PLAN

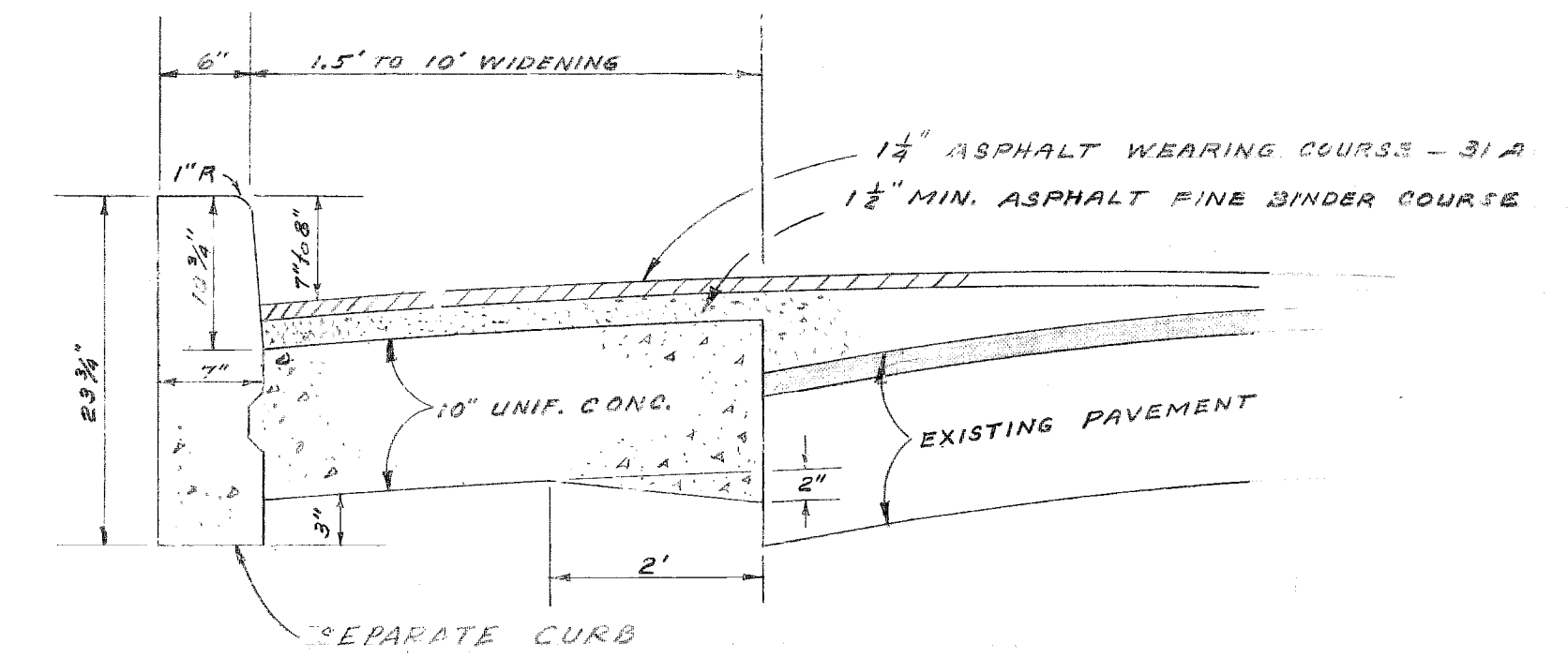
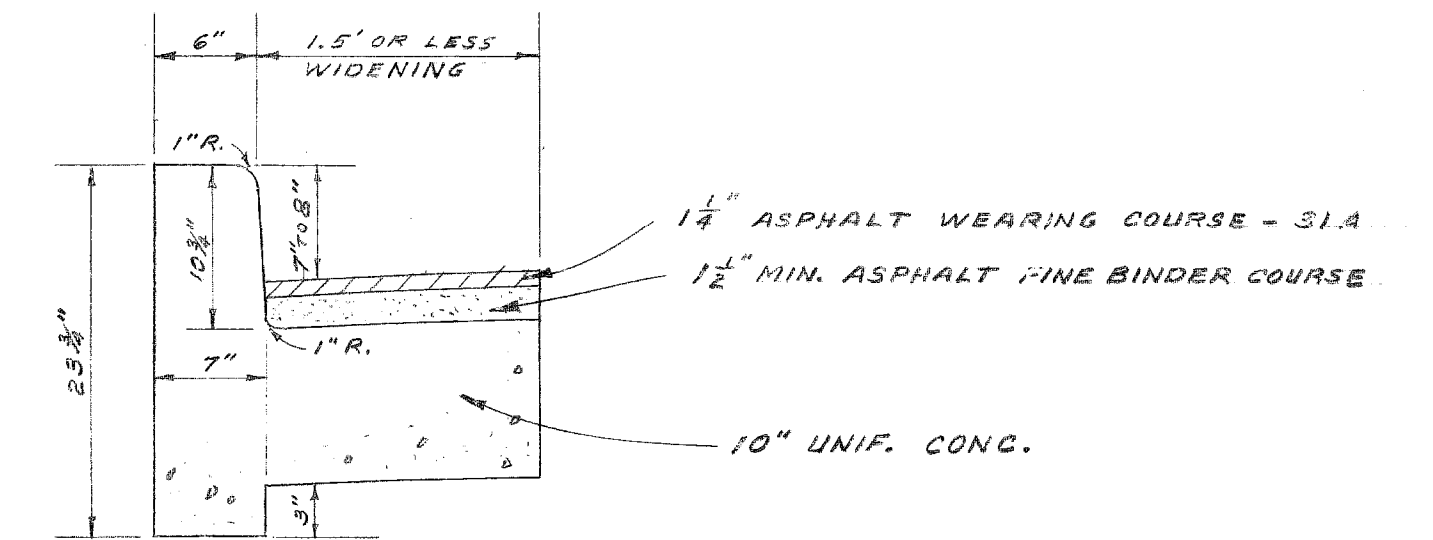


CONSTRUCTION PLAN

ORLEANS 50' WD.

BENCH MARKS	ELEV.
P. B. M. # 38-253 JEFFERSON & N.S. & G.T.R.R.	123.552
C. B. M. # HYD. S.W. COR. LARNED & ST. AUBIN	120.66
C. B. M. # R.R. SPIKE IN D.E. POLE, S.S. LARNED & 300' E. OF G.T.R.R.	119.06

- NOTES:
- ADD 110.00 TO PLAN ELEVATIONS.
  - CONTRACTION JOINTS SHALL BE SPACED 15' C.C. AND 20' C.C. FOR SLAG AND NATURAL AGGREGATES RESPECTIVELY
  - FOR LEGEND SEE SHEET NO. 7 OF 7.
  - FIELD ENGINEER WILL DETERMINE IF COLD PATCHING IS REQUIRED FOR TEMPORARY WALK & DRIVEWAY REPLACEMENT ON NORTH SIDE OF JEFFERSON IF P.W. 5752 AND P.W. 5745 R ARE NOT CONCURRENT.



TYPICAL SECTIONS  
PAVEMENT WIDENING

NO SCALE

SCALE 1" = 20' FIELD NOTES LL38L (3) A.O. 1768

DESIGNED BY	W. L. T.	APPROVED:	<i>John Erickson</i> ENGINEER OF STREETS
DRAWN BY	F. A. WAGNER		<i>afred. Bernarducci</i> ASSOCIATE CITY ENGINEER
CHECKED BY	W. L. T. H. KAMMIS		CITY ENGINEER

CITY OF DETROIT  
DEPARTMENT OF PUBLIC WORKS  
HIGHWAY & EXPRESSWAY DIVISION  
BRIDGE WIDENING

JEFFERSON AVE. BRIDGE X068  
OVER  
G.T.W.R.R.  
WIDENING BRIDGE APPROACHES

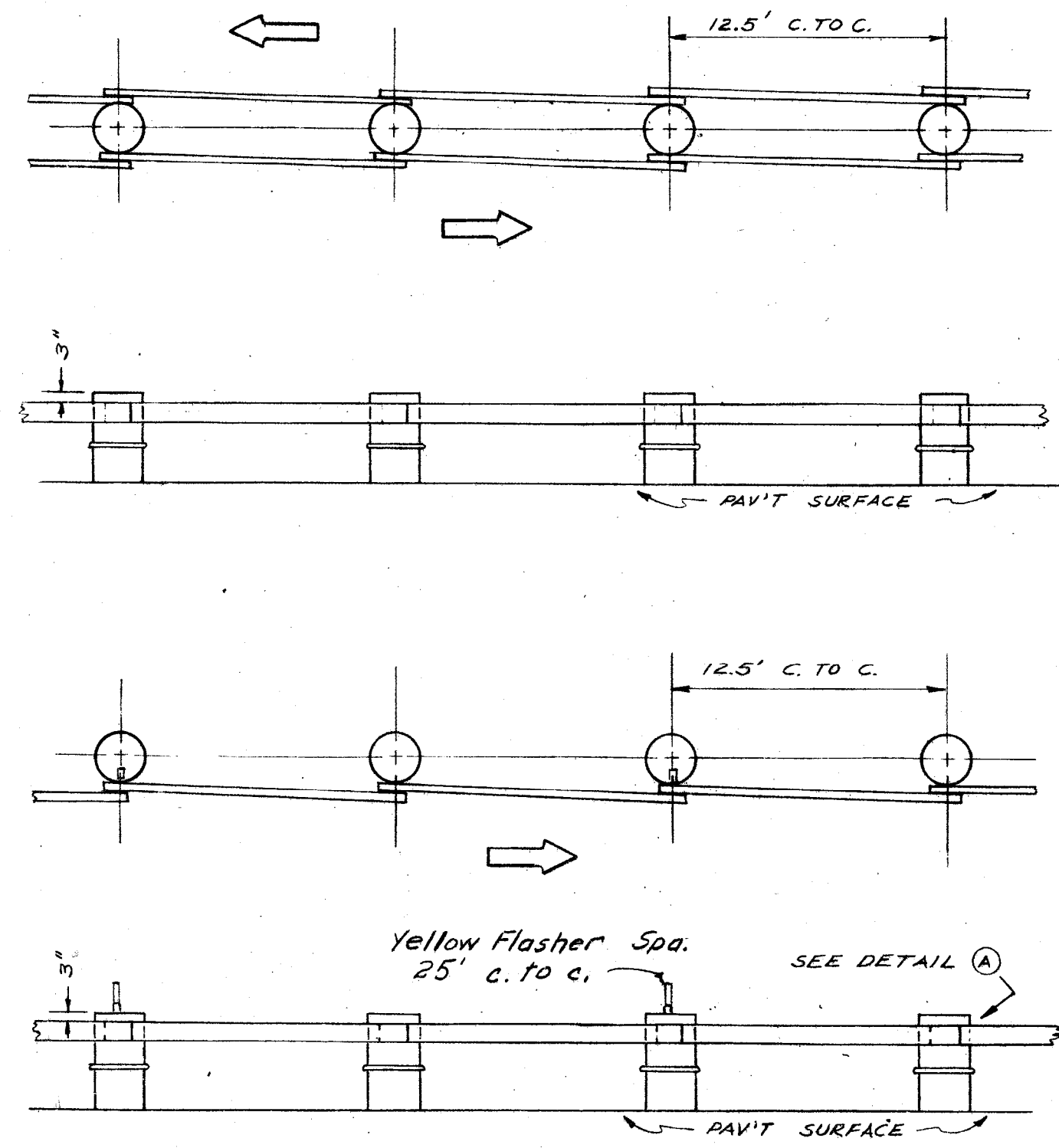
SHEET 6 OF 8 SHEETS
JOB No. PW 5752
DRWG No. C-4973
DATE 11-25-66

DRAWER 15 X068



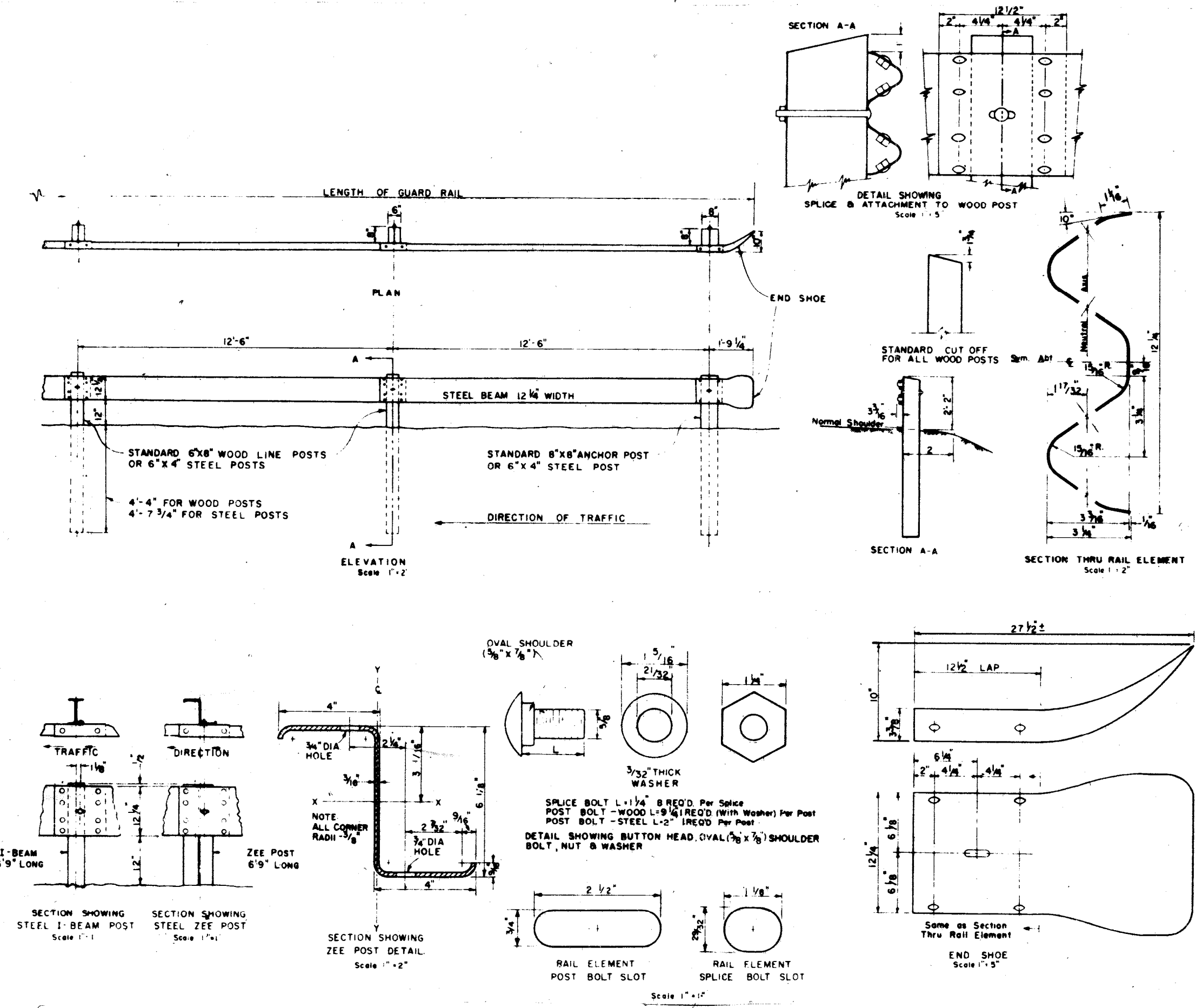






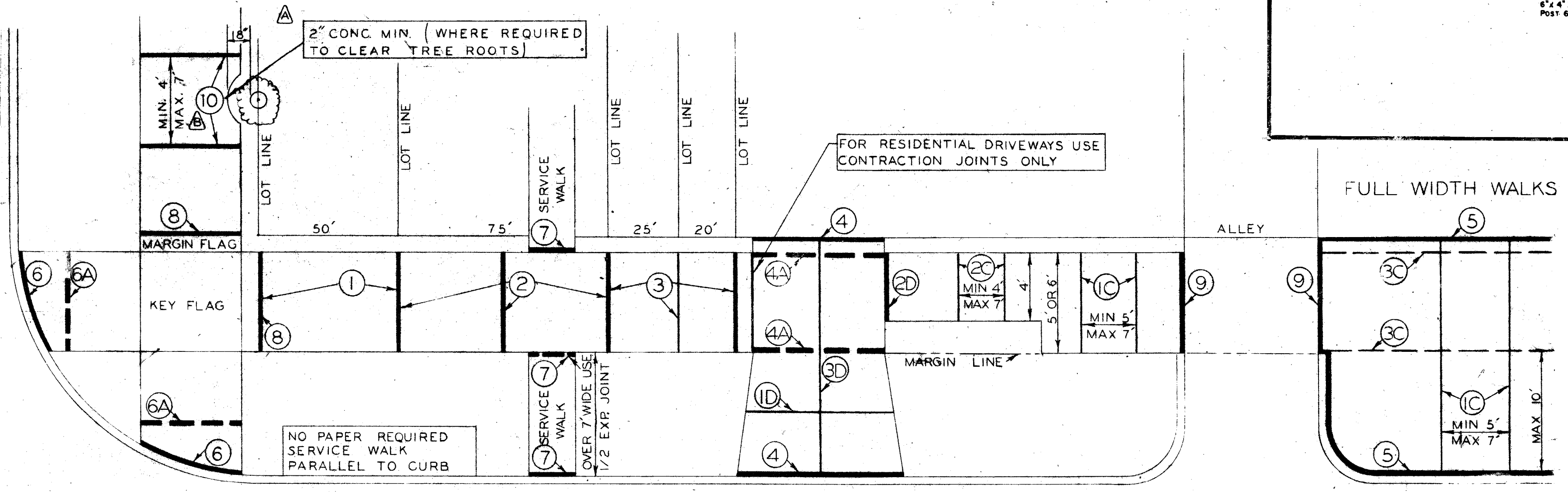
**NOTES**  
 BEAM SUPPORTS SHALL BE 55 GALLON SALVAGED BARRELS PAINTED HIGHWAY YELLOW (NON-REFLECTORIZED) AND PROVIDED WITH DRAIN HOLES.  
 FACE OF GUARD RAIL SHALL BE PARTIALLY REFLECTORIZED WITH WHITE OR SILVER BEADED SHEET MATERIAL COVERING 25% OF SURFACE AREA PLACED IN THE FORM OF HORIZONTAL (1 1/2\"/>

DRG. NO. C-4729  
**SINGLE AND DOUBLE BEAM BARREL BARRICADE**



**NOTES**  
 All wood posts shall conform to dimensions shown and shall be of Douglas Fir, Long Leaf Pine, Short Leaf Pine, White Oak, Red Oak, Beech, White Ash, Western Hemlock, Sugar Maple or other approved wood. Steel posts of length shown may be substituted.  
 Rail Elements shall be tapered in the direction of traffic.  
 All brackets, fittings and bolts shall be in accordance with the Specifications. Bolts shall be cut off not to exceed 1/2\"/>

DRG. NO. C-4585  
**STEEL BEAM GUARD RAIL**



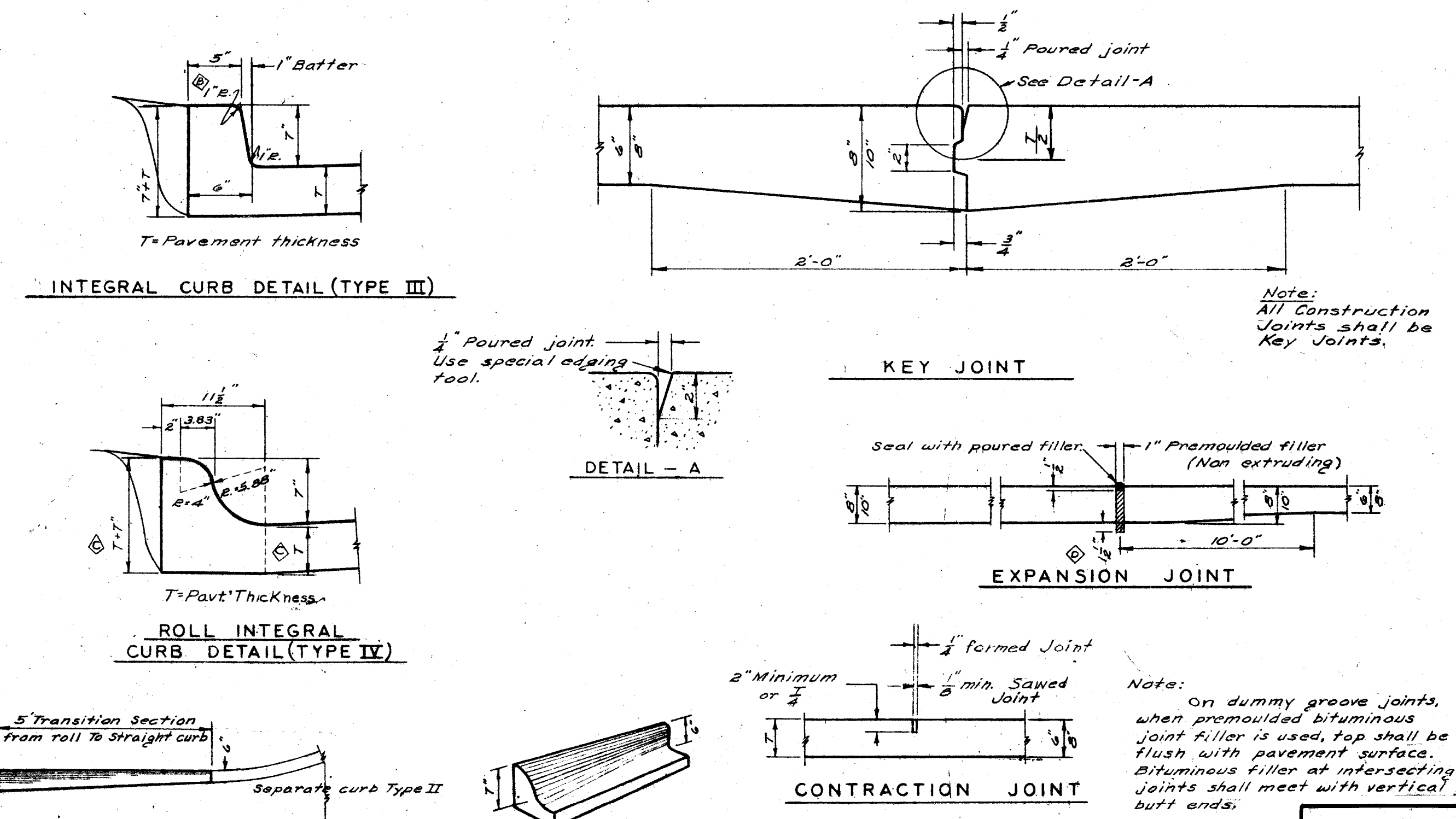
- EXPANSION JOINTS**
- PLACE 1/2\"/>

- CONTRACTION JOINTS**
- PLACE CONTRACTION JOINTS AT INTERVALS OF NOT LESS THAN 5' NOR MORE THAN 7' ON WALKS 5' WIDE OR WIDER, INCLUDING FULL WIDTH WALKS
  - PLACE CONTRACTION JOINTS AT INTERVALS OF NOT LESS THAN 4' NOR MORE THAN 7' ON WALKS 4' WIDE
  - PLACE CONTRACTION JOINTS AT THE MARGIN LINE ON FULL WIDTH WALKS (OPTIONAL)
  - PLACE CONTRACTION JOINTS IN DRIVEWAYS SO THAT NO STONE WILL EXCEED THE DIMENSIONS OF 15' BY 15'
- DRIVEWAYS**
- PLACE 1\"/>

- LEGEND**
- LOT, PROPERTY AND CURB LINES
  - WALK AND DRIVEWAY AREA
  - EXPANSION JOINT
  - EXPANSION JOINT ALTERNATE POSITION
  - CONTRACTION JOINT
  - CONTRACTION JOINT ALTERNATE POSITION
  - MARGIN LINE

VARIAION FROM THIS PLAN MUST BE APPROVED BY THE ENGINEER

DRG. NO. C-4462  
**SIDEWALK JOINTING STANDARD**



DRG. NO. C-4380  
**DETAILS OF STANDARD CURBS AND JOINTS**

DESIGNED BY	—	APPROVED	<i>R. C. Leduc</i> STRUCTURAL ENGINEER
DRAWN BY	—	CHECKED BY	<i>apost. Bernarducci</i> ASSOCIATE CITY ENGINEER
TRACED BY	<i>A.J.G.</i>		
CHECKED BY	<i>Locher</i>	<i>I.H.S.</i>	CITY ENGINEER

**CITY OF DETROIT**  
 DEPARTMENT OF PUBLIC WORKS  
 HIGHWAY & EXPRESSWAY DIVISION  
**BRIDGE WIDENING**

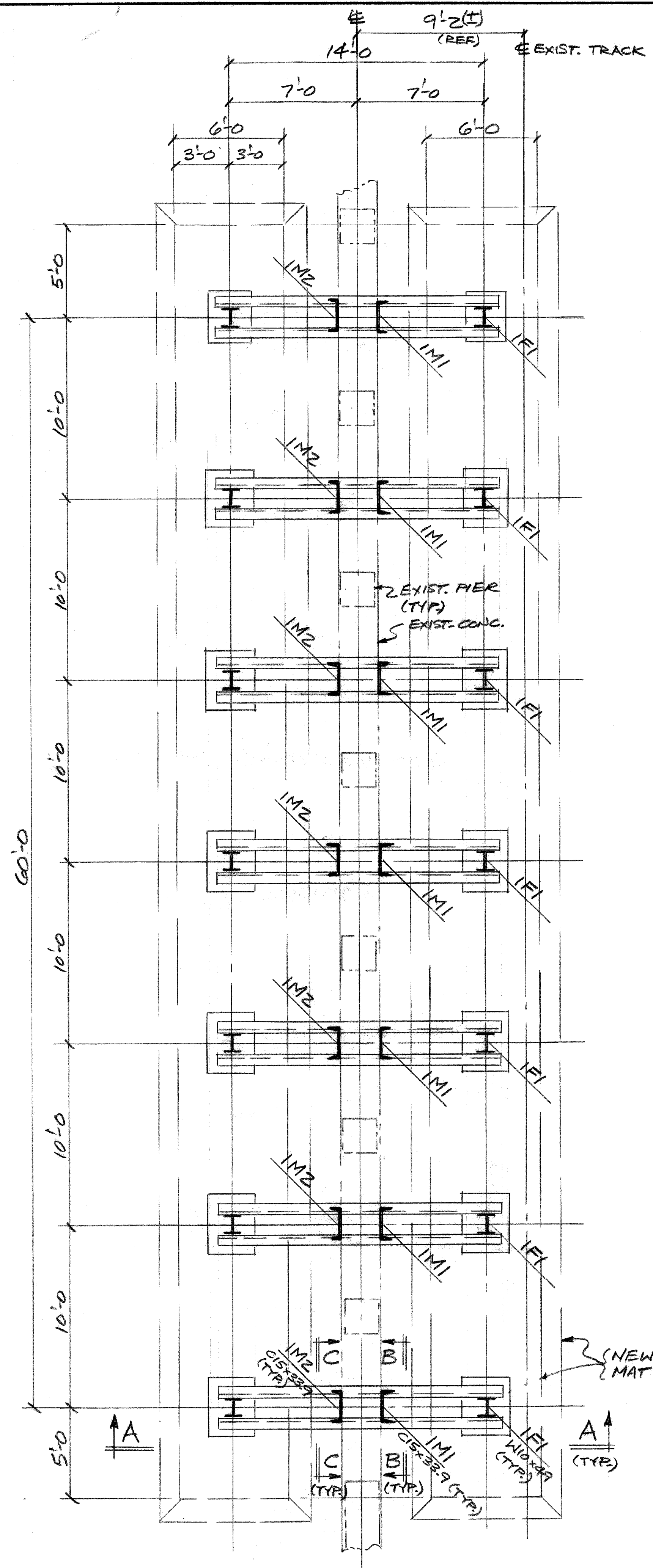
**JEFFERSON AVE. BRIDGE X068**  
 OVER  
**G.T.W.R.R.**  
**STANDARD DETAILS**

SHEET 8 OF 8 SHEETS
JOB No. PW 5752
DRWG No. C-106
DATE JAN. 1967

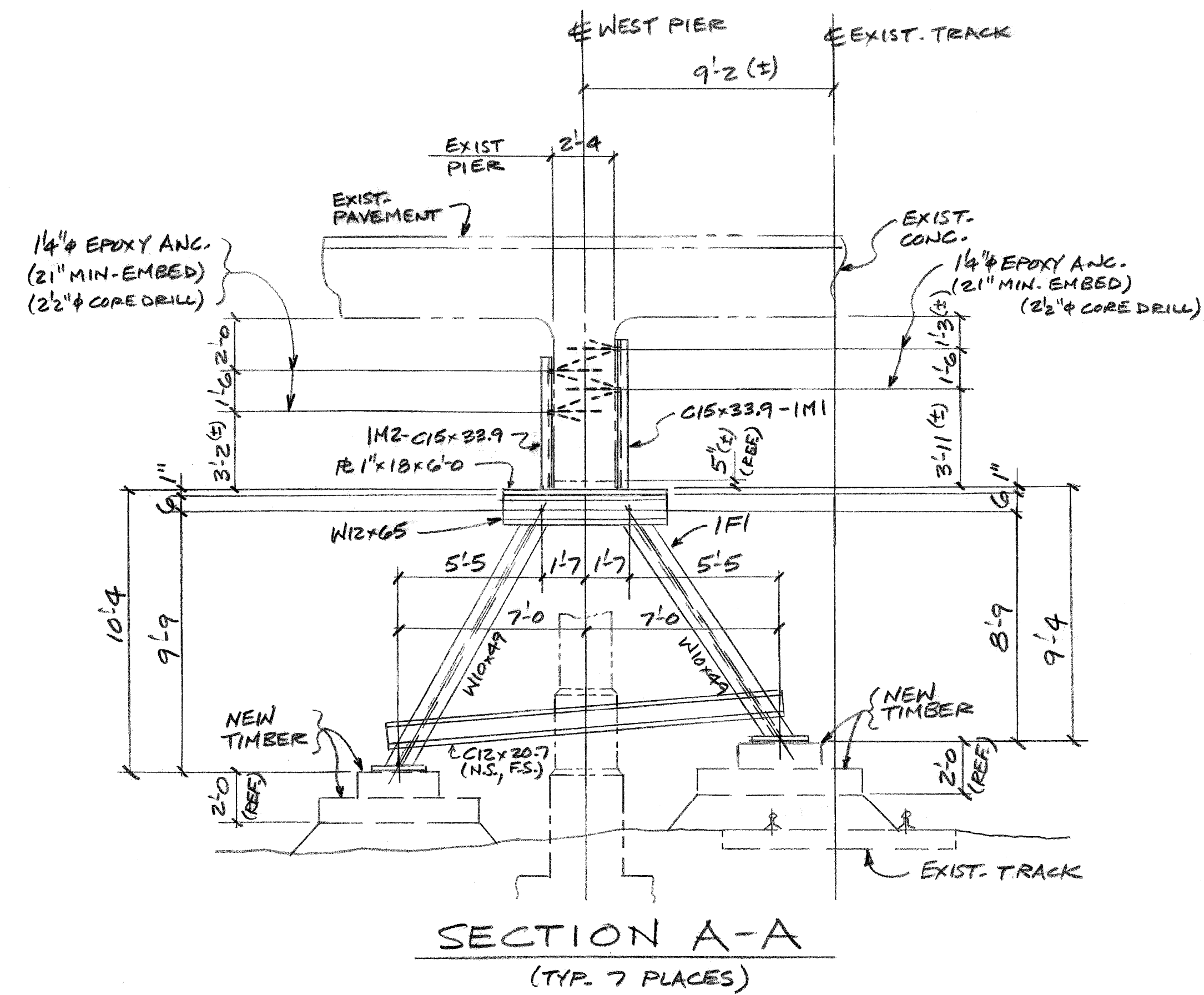




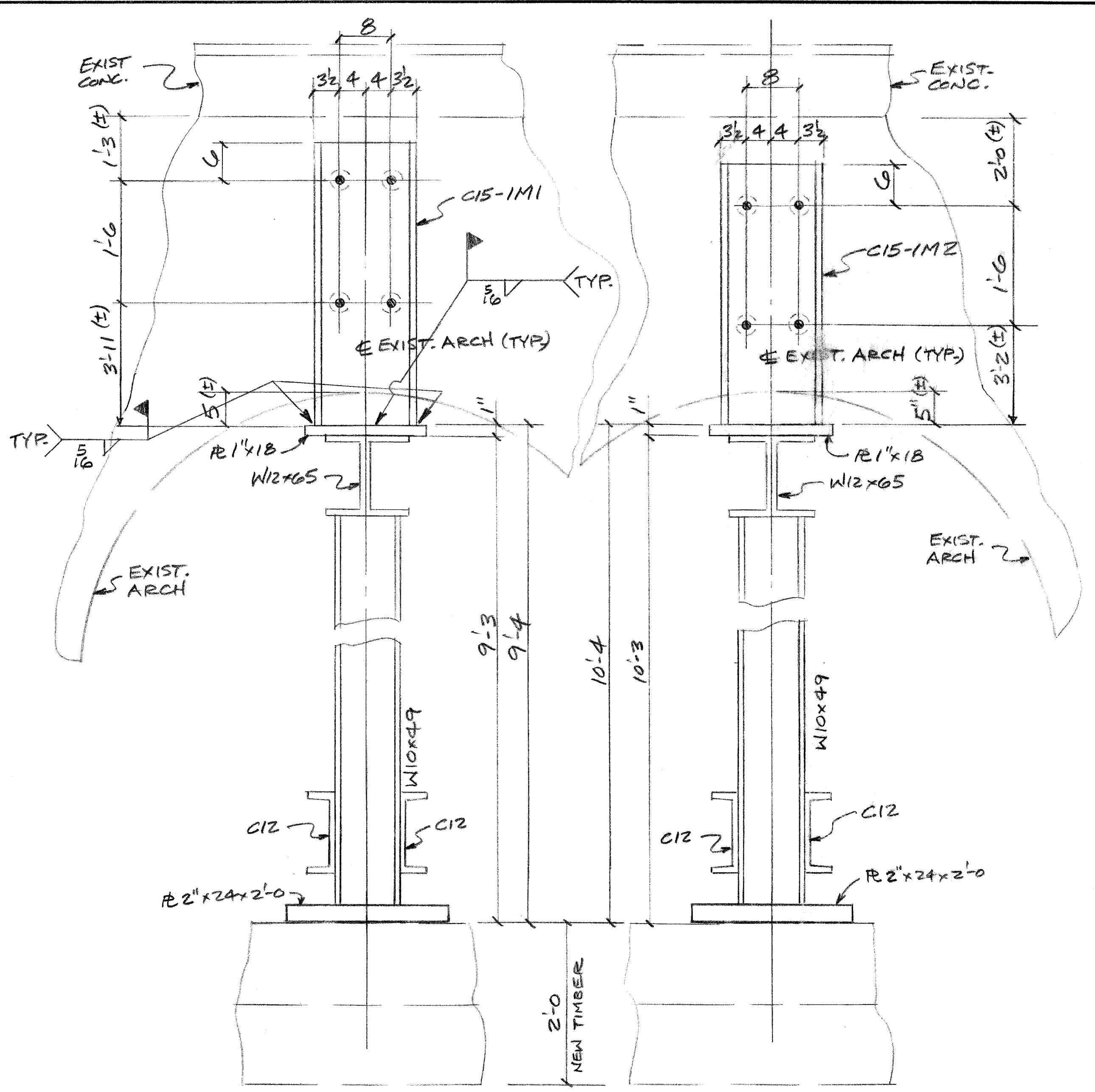




PLAN @ NEW (TEMP.) SUPPORTS



SECTION A-A  
(TYP. 7 PLACES)



SECTION B-B

SECTION C-C

REVISION	DATE	BY	REMARKS
1			
2			
3			
4			
5			
6			

DELTA IRON WORKS  
1801 MELDRUM AVE  
DETROIT MICH. 48207  
313-579-1445

CUSTOMER: City of Detroit  
ARCHITECT: TUCKER, YOUNG, JACKSON, TOLL INC.  
JOB: JEFFERSON AVE BRIDGE OVER GTWRR  
DETAILS OF: PLANS & SECTION

SCALE	DRAWN BY: <i>BC</i>	CONTRACT NO. 99-022
	DATE 8/23/99	
	CHECKED BY: <i>BC</i>	SHEET E1 OF
	DATE 8/24/99	

