

Received 10/24/05

# CITY OF DETROIT IN COOPERATION WITH MICHIGAN DEPARTMENT OF TRANSPORTATION FEDERAL HIGHWAY ADMINISTRATION DEQUINDRE CUT GREENWAY

100% OWNER REVIEW  
October 24, 2005

### Drawing Sheet Index:

SHEET	SHEET TITLE	SCALE
1	Cover Sheet	NA
2-4	Typical Cross-Sections	As Noted
5	Note Sheet	NA
6	Standard Symbols	NA
7	Survey	NA
8-13	Survey	1"=40'-0"
14-19	Site Demolition Plan - Areas 1-6	1"=30'-0"
20-24	Site Bridge Demolition	As Noted
25-30	Site Utility Plan - Areas 1-6	1"=30'-0"
31-32	Site Utility Details	As Noted
33-40	Site Layout & Grading Plan - Areas 1-6	1"=30'-0"
41-42	Site Details	As Noted
43-48	Site Planting Plan - Areas 1-6	1"=30'-0"
49	Site Planting Details	As Noted
50-55	Site Signage & Striping Plan - Areas 1-6	1"=30'-0"
56-77	Site Lighting & Security Plan - Area 1-6	As Noted

MDOT JOB #: JN 82619A  
CONTROL SECTION: STE 82702  
FEDERAL PROJECT #: STP-0582(142)  
FEDERAL ITEM #: RR 4750

**PROJECT OWNER**  
DETROIT ECONOMIC GROWTH CORPORATION  
500 Griswold Street  
Suite 2200  
Detroit, MI. 48226

**DESIGN TEAM**  
LANDSCAPE ARCHITECT / CIVIL ENGINEER  
JJR, LLC  
110 MILLER AVENUE,  
ANN ARBOR, MICHIGAN 48104  
734.662.4457 T  
734.662.0779 F  
www.jjr-us.com

**SURVEY**  
METCO Services, Inc.  
1273 Library  
Detroit, MI 48226  
(313) 961-4560

**LIGHTING/SECURITY**  
Applied Power and Controls, Inc.  
3011 W. Grand Boulevard  
Suite 22413  
Detroit, MI. 48202

**UTILITY PROVIDERS**

- |   |   |
|---|---|
| <p>CITY OF DETROIT<br/>WATER AND SEWERAGE DEPARTMENT<br/>735 RANDOLPH, 14th FLOOR<br/>Detroit, MI 48226<br/>313.964.9889<br/>313.964.9560 (FAX)</p> <p>COMCAST CABLE CO.<br/>12775 LYNDON<br/>Detroit, MI 48227<br/>313.934.2600 EXT. 213</p> <p>MICHIGAN CONSOLIDATED<br/>GAS COMPANY<br/>1st FLOOR - NOBLE BLDG.<br/>3200 HOBSON<br/>Detroit, MI 48201<br/>313.577.7236</p> | <p>CITY OF DETROIT<br/>PUBLIC LIGHTING DEPARTMENT<br/>9449 GRINNELL<br/>Detroit, MI 48213<br/>313.267.7228</p> <p>AT&amp;T<br/>1316 ANN ARBOR ROAD<br/>Plymouth, MI 48170<br/>734.451.3064</p> <p>DTE<br/>2000 SECOND AVENUE<br/>Detroit, MI 48226<br/>313.235.9043</p> <p>SBC<br/>RIGHT OF WAY METRO<br/>31100 PLYMOUTH ROAD<br/>ROOM 301<br/>Livonia, MI 48105<br/>734.523.6883</p> |
|---|---|

**PLANS PREPARED BY:**  
**JJR** JJR, LLC  
110 MILLER AVENUE,  
ANN ARBOR, MICHIGAN 48104  
734.662.4457 T  
734.662.0779 F  
www.jjr-us.com

**CONTRACT FOR:** 20' WIDE HMA SHARED USE PATH, 4,923' LONG INCLUDING ALL ASSOCIATED REMOVAL, GRADING, DRAINAGE, LIGHTING, SECURITY AND LANDSCAPING.

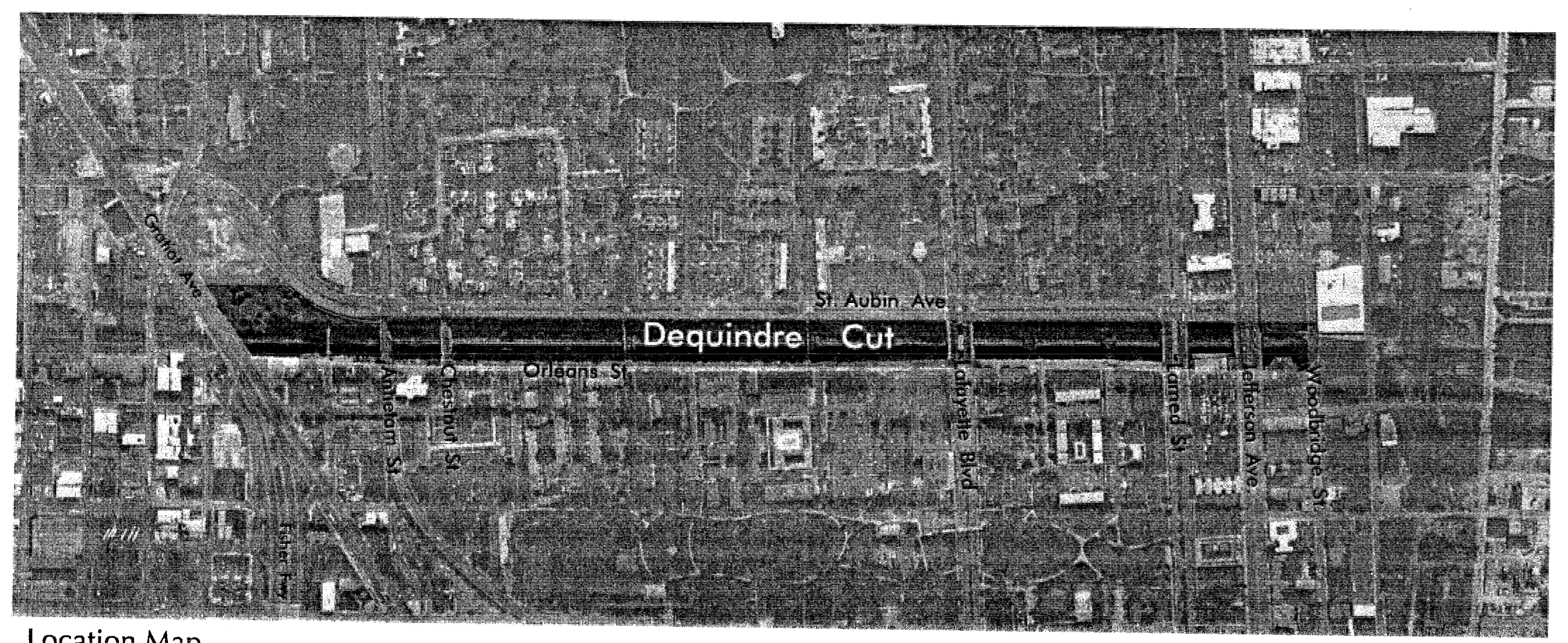
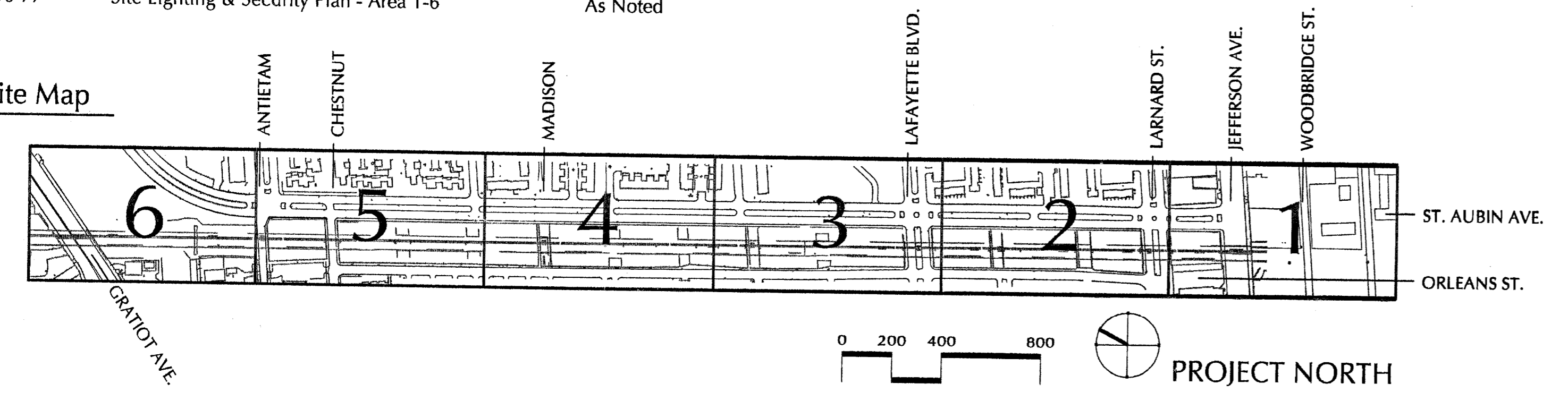
LOCAL AUTHORITY APPROVAL  
CITY OF DETROIT

APPROVED BY:	DETROIT TRAFFIC ENGINEERING DIVISION, DPW	DATE
APPROVED BY:	STREET MAINTENANCE DIVISION, DPW	DATE
APPROVED BY:	DETROIT RECREATION DEPARTMENT	DATE
APPROVED BY:	DETROIT PUBLIC LIGHTING DEPARTMENT	DATE
APPROVED BY:	DETROIT WATER AND SEWERAGE ENGINEERING DIVISION	DATE

PREPARED UNDER SUPERVISION OF:  
Registered Professional Engineer Registration

ORGANIZATION

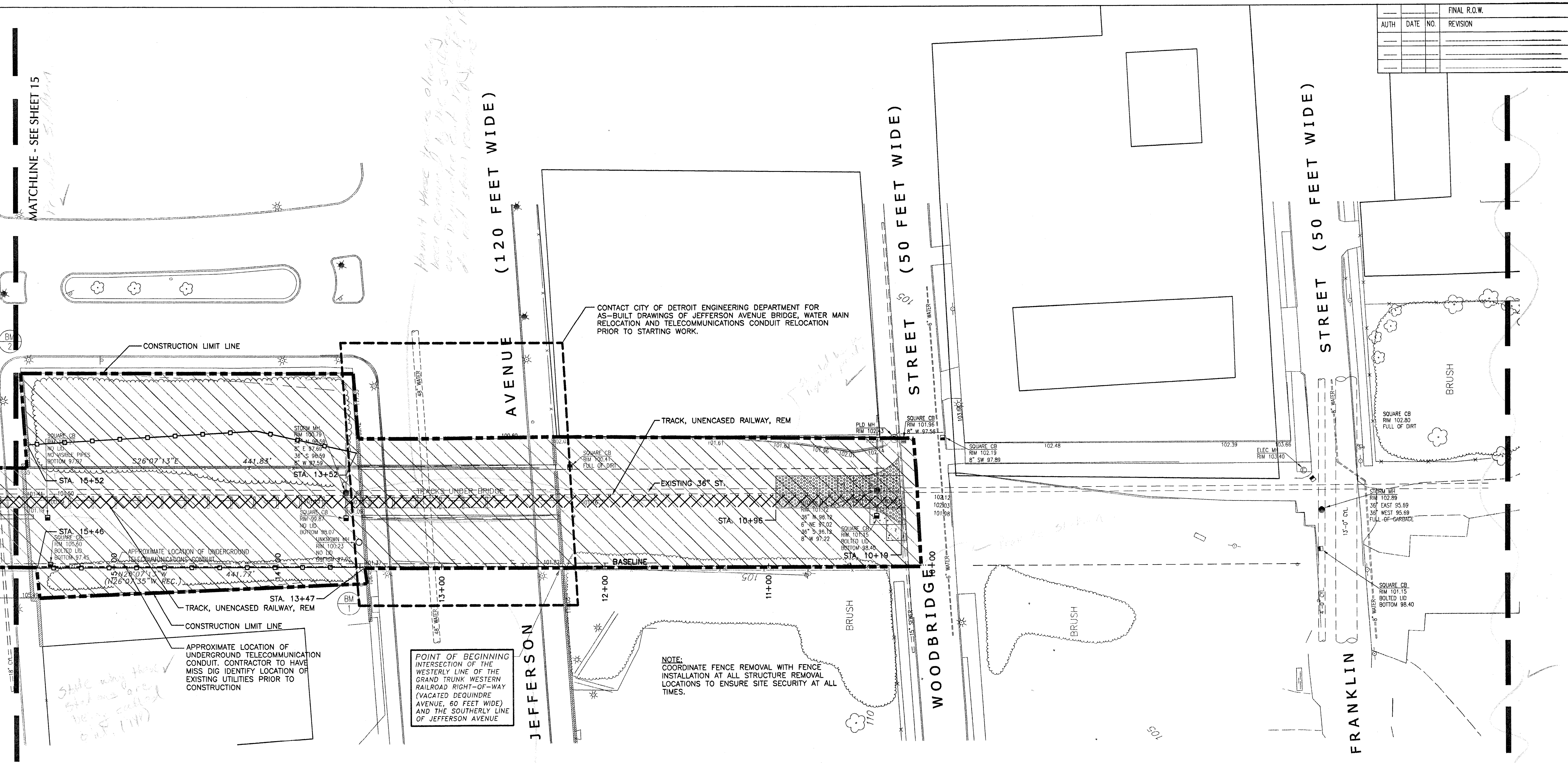
Site Map



Location Map

EXISTING BY: DATE: PROPOSED BY: DATE: LAST CORRECTION BY: DATE:

FILE NAME: P:\24464\000\Dequindre Cut\Cad\Sheet\DEMO\L-01.1-DEMO.dwg USER: lox DATE: Oct. 24 2005 TIME: 04:26 pm  
 1 2 3 4 5 6 7 8 9 10 11 12 13 14 15 16 17 18 19 20 21 22 23 24 25 26 27 28 29 30 31 32 33 34 35 36 37 38 39 40 41 42 43 44 45 46 47 48 49 50 51 52 53 54 55 56 57 58 59



MATCHLINE - SEE SHEET 15

JEFFERSON AVENUE (120 FEET WIDE)

WOODBRIDGE STREET (50 FEET WIDE)

FRANKLIN STREET (50 FEET WIDE)

CONTACT CITY OF DETROIT ENGINEERING DEPARTMENT FOR AS-BUILT DRAWINGS OF JEFFERSON AVENUE BRIDGE, WATER MAIN RELOCATION AND TELECOMMUNICATIONS CONDUIT RELOCATION PRIOR TO STARTING WORK.

TRACK, UNENCASED RAILWAY, REM

EXISTING 36" ST.

BASELINE

CONSTRUCTION LIMIT LINE

TRACK, UNENCASED RAILWAY, REM

CONSTRUCTION LIMIT LINE

APPROXIMATE LOCATION OF UNDERGROUND TELECOMMUNICATIONS CONDUIT. CONTRACTOR TO HAVE MISS DIG IDENTIFY LOCATION OF EXISTING UTILITIES PRIOR TO CONSTRUCTION

POINT OF BEGINNING INTERSECTION OF THE WESTERLY LINE OF THE GRAND TRUNK WESTERN RAILROAD RIGHT-OF-WAY (VACATED DEQUINDE AVENUE, 60 FEET WIDE) AND THE SOUTHERLY LINE OF JEFFERSON AVENUE

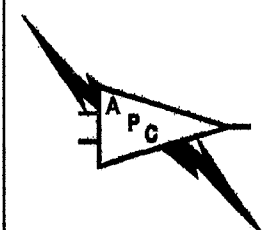
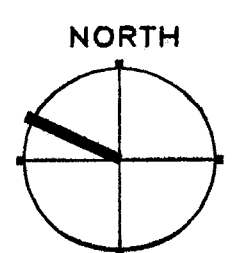
NOTE: COORDINATE FENCE REMOVAL WITH FENCE INSTALLATION AT ALL STRUCTURE REMOVAL LOCATIONS TO ENSURE SITE SECURITY AT ALL TIMES.

LEGEND

- Construction Limit Line
- Clearing
- Track, Unencased Railway, Rem
- Fence, Rem
- Masonry And Conc Structure, Rem
- Water Main, Conflict 8 Inch
- Erosion Control, Silt Fence
- Erosion Control, Temporary Inlet Sediment Trap
- Erosion Control, Gravel Access Approach
- Remove Existing Bridge Structure - (Structures, Rem) Types 1 Thru 5
- Thinning Selective, Type II

QUANTITIES THIS SHEET		
Quantity	Unit	Item
1.21	Acre	Clearing
---	LS	Debris, Site, Rem
540	Ft	Track, Unencased Railway, Rem
400	Ft	Erosion Control, Silt Fence
1	Ea	Erosion Control, Gravel Access Approach

FINAL R.O.W.			
AUTH	DATE	NO.	REVISION



SITE DEMOLITION PLAN - AREA 1

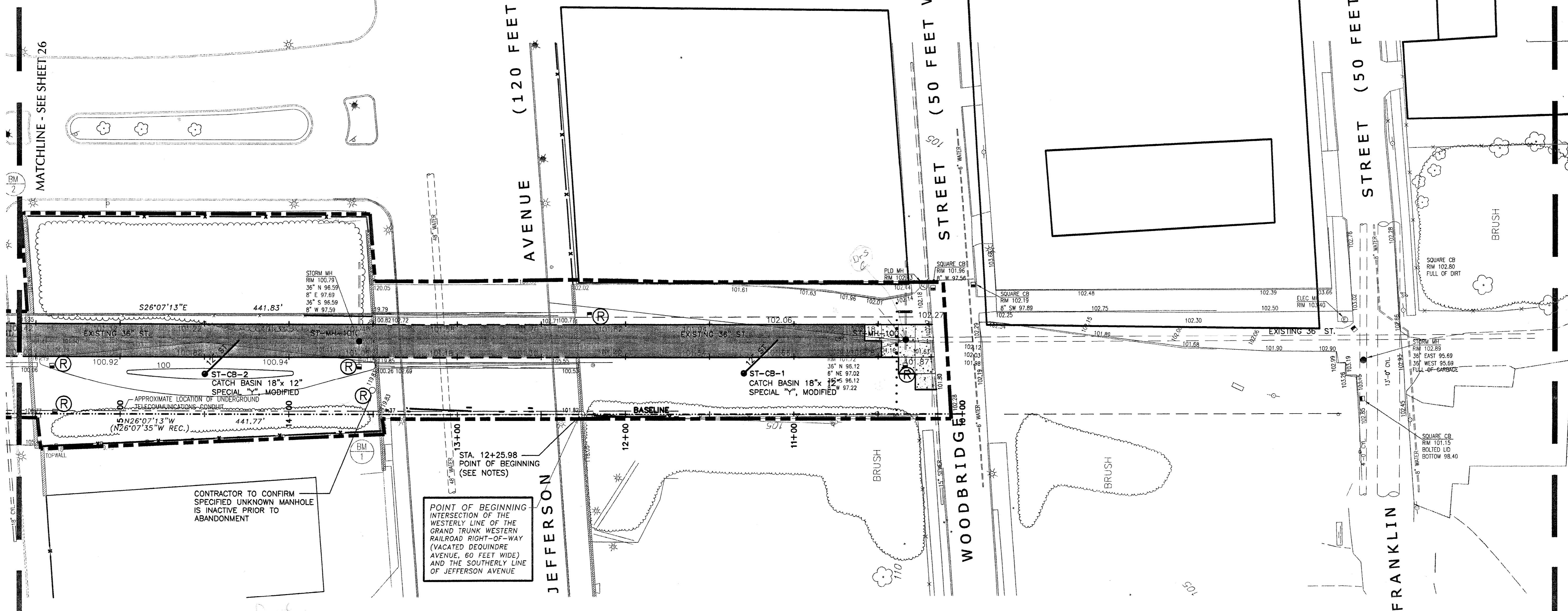
DATE	SCALE	CONT. SEC.	JOB NO.	DESIGN UNIT	SHEET NO. R.O.W.
10/24/05	1"=30'	82702	82619A		14

EXISTING BY: DATE: PROPOSED BY: DATE: LAST CORRECTION BY: DATE:

FILE NAME: P:\244664\000\Dequindre Cut\Sheet\UTL\1-02-1-UTL.dwg USER:lcx DATE: Oct. 24 2005 TIME: 04:33 pm

QUANTITIES THIS SHEET		
QUANTITY	UNIT	ITEM
820	Lbs	Dr Structure Cover, Modified
2	Ea	Dr Structure Cover, Adj, Case 2, Modified
6	Ea	Dr Structure, Rem
6	Ea	Dr Structure Cleaning, Modified
56	Ft	Sewer, Cl C, 76m Iv, 12 Inch, Tr Det B, Modified
2	Ea	Catch Basin 18" X 12" Special "Y"

FINAL R.O.W.			
AUTH	DATE	NO.	REVISION



**LEGEND**

EXISTING STORM SEWER STRUCTURE	● ST-MH-100
PROPOSED CATCH BASIN	● ST-CB-1
PROPOSED 12" STORM SEWER	12"ST
PROPOSED 8" WATER MAIN	8"W
EXISTING 36" ST	====
EXISTING CONTOURS	---125---
PROPOSED CONTOURS	—125—
PROPOSED SPOT ELEVATIONS	+125
STATIONING BASE LINE	-----57+00-----
DR STRUCTURE, REM	Ⓡ

**NOTES:**

- EXISTING RIM ELEVATIONS NOTED WITH AN ASTERISK ARE TOP OF STRUCTURE. (I.E. NO EXISTING FRAME & COVER)
- STATIONING BASE LINE SHALL MATCH EXISTING PROPERTY LINE AT BEARING N26°07'13"W WITH STATION 12+25.98 CORRESPONDING TO THE SURVEY POINT OF BEGINNING
- FOR CATCH BASIN DETAILS SEE SHEET 32
- PROTECT EXISTING 36" ST.

**UTILITY ADJUSTMENT SCHEDULE**

STRUCTURE	EXISTING RIM. ELEV.	ADJUSTED RIM. ELEV.	STA.	OFFSET RIGHT	COMMENTS
ST-MH-100	101.72	102.02	10+33.72	45.53'	REMOVE EXIST. FRAME & COVER AND REPLACE WITH FRAME & COVER (SEE DETAIL C-4391)
ST-MH-101	100.79	101.26	13+58.38	44.61'	REMOVE EXIST. FRAME & COVER AND REPLACE WITH FRAME & COVER (SEE DETAIL C-4391)
ST-MH-102	101.15	101.41	16+21.96	45.36'	REMOVE EXIST. FRAME & COVER AND REPLACE WITH FRAME & COVER (SEE DETAIL C-4391)
ST-MH-103	* 101.79	101.99	19+36.65	44.58'	PROVIDE FRAME & COVER (SEE DETAIL C-4391)
ST-MH-104	101.89	102.49	22+83.64	45.45'	REMOVE EXIST. FRAME & COVER AND REPLACE WITH FRAME & COVER (SEE DETAIL C-4391)
ST-MH-105	* 101.95	103.17	26+30.32	45.77'	PROVIDE FRAME & COVER (SEE DETAIL C-4391)
ST-MH-106	* 102.37	103.87	29+80.68	45.11'	PROVIDE FRAME & COVER (SEE DETAIL C-4391)
ST-MH-107	103.72	105.04	32+58.31	45.16'	REMOVE EXIST. FRAME & COVER AND REPLACE WITH FRAME & COVER (SEE DETAIL C-4391)
ST-MH-108	* 113.26	113.80	46+8.32	45.23'	PROVIDE FRAME & COVER (SEE DETAIL C-4391)
ST-MH-109	* 115.59	114.11	50+6.15	29.94'	PROVIDE FRAME & COVER (SEE DETAIL C-4391)
ST-MH-110	* 116.30	116.64	52+12.39	30.09'	PROVIDE FRAME & COVER (SEE DETAIL C-4391)
ST-MH-111	* 117.92	119.33	55+0.42	30.20'	PROVIDE FRAME & COVER (SEE DETAIL C-4391)

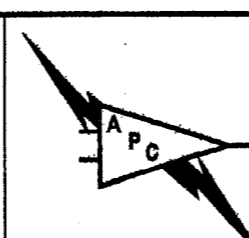
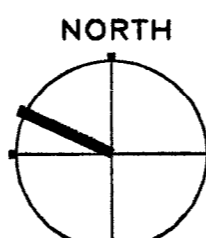
**STORM SEWER SCHEDULE**

STRUCTURE	RIM. ELEV.	STA.	OFFSET RIGHT	① INV. ELEV.	② INV. ELEV.	③ INV. ELEV.
ST-CB-1	99.44	11+29.77	25.26'	97.95	97.83	96.23
ST-CB-2	99.91	14+49.90	24.60'	98.42	98.30	96.70
ST-CB-3	100.47	7+67.28	24.59'	98.98	98.86	97.26
ST-CB-4	100.80	10+77.53	24.93'	99.31	99.19	97.59
ST-CB-5	100.90	13+92.02	25.55'	99.41	99.29	97.69
ST-CB-6	101.68	17+71.92	25.50'	100.19	100.07	98.47
ST-CB-7	101.66	20+86.92	25.13'	100.17	100.00	98.40
ST-CB-8	103.11	33+14.45	25.16'	100.64	100.52	98.92
ST-CB-9	103.17	33+24.45	25.16'	100.70	100.58	98.98
ST-CB-10	103.22	33+34.45	25.16'	100.75	100.63	99.03
ST-CB-11	103.75	31+93.00	62.00'	100.26	100.18	98.58

\*\* SEE SHT. 32, STANDARD 18" X 12" SPECIAL "Y" CATCH BASIN AND TYPICAL SEWER CONNECTION FOR LOCATIONS OF ①, ② AND ③

**SITE UTILITY PLAN - AREA 1**

DATE	SCALE	CONT. SEC.	JOB NO.	DESIGN UNIT	SHEET NO.
10/24/05	1"=30'	82702	82619A		25

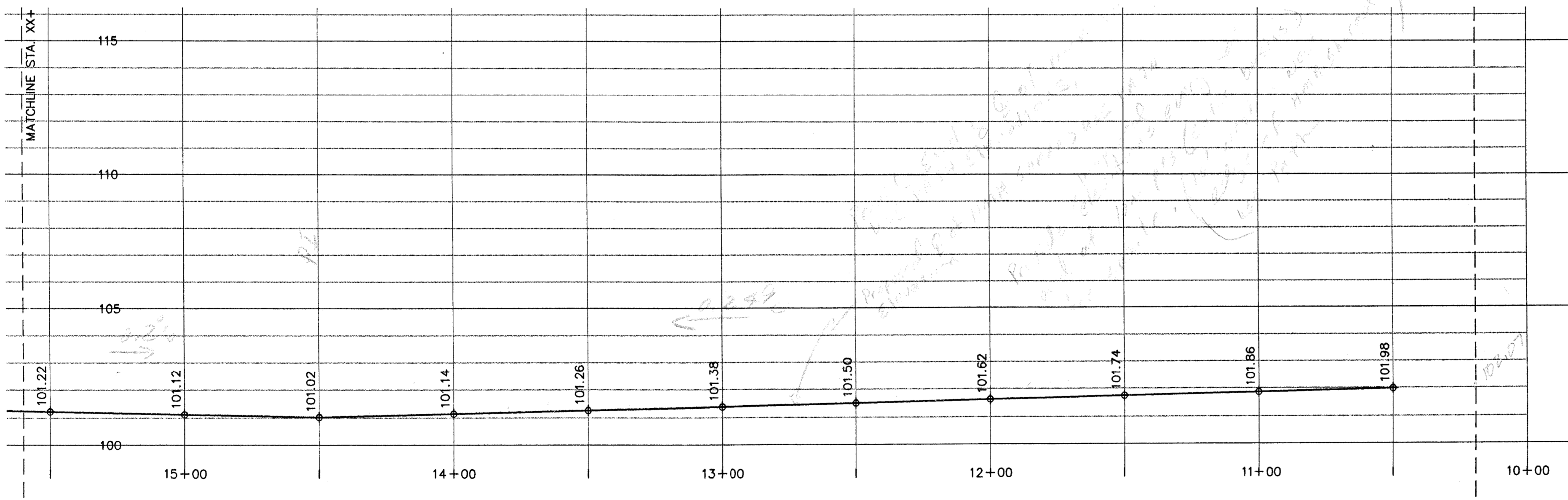
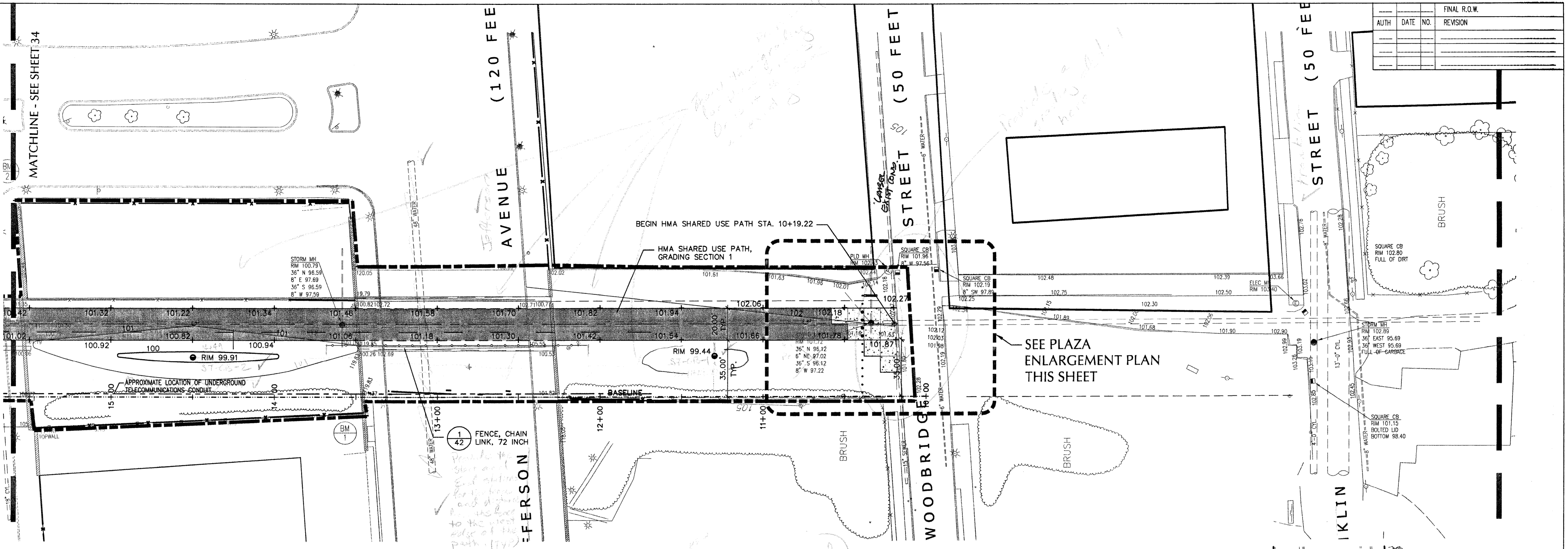


DETROIT ECONOMIC GROWTH CORPORATION



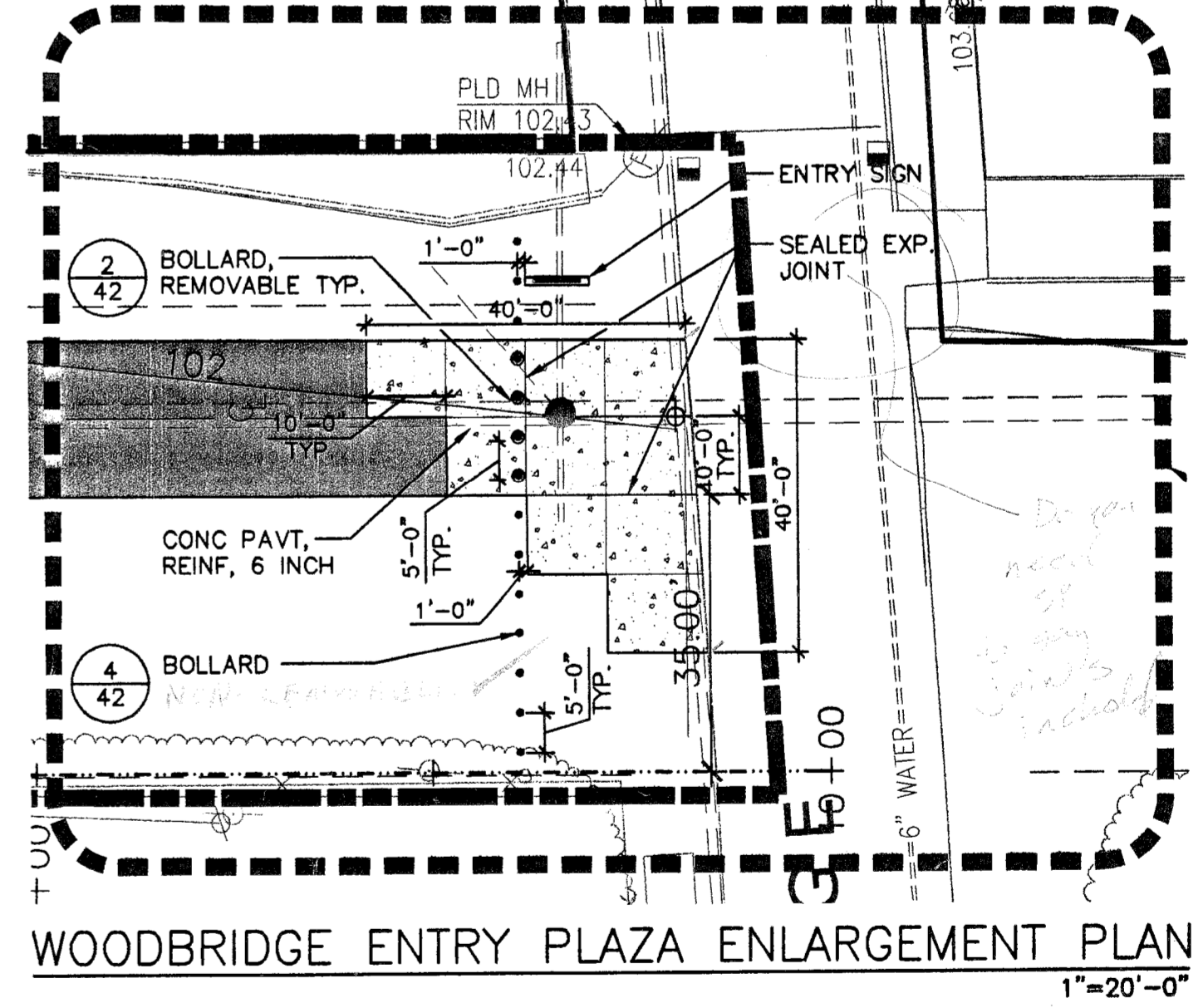
EXISTING BY: \_\_\_\_\_ DATE: \_\_\_\_\_  
 PROPOSED BY: \_\_\_\_\_ DATE: \_\_\_\_\_  
 LAST CORRECTION BY: \_\_\_\_\_ DATE: \_\_\_\_\_

FILE NAME: P:\2446A\000\Dequandre Cut\Cad\Sheet\LAYO\L-03.1-LAYO.dwg USER:cox DATE: Oct, 24 2005 TIME: 04:45 pm  
 1 2 3 4 5 6 7 8 9 10 11 12 13 14 15 16 17 18 19 20 21 22 23 24 25 26 27 28 29 30 31 32 33 34 35 36 37 38 39 40 41 42 43 44 45 46 47 48 49 50 51 52 53 54 55 56 57 58 59



**LEGEND**

HMA SHARED USE PATH	
EXISTING CONTOURS	--- 125 ---
PROPOSED CONTOURS	— 125 —
PROPOSED SPOT ELEVATION	+102.8
FENCE, CHAINLINK, 72 INCH	
CONC PAVT, REINF, 6 INCH	



**QUANTITIES THIS SHEET**

QUANTITY	UNIT	ITEM
541	Ft	HMA Shared Use Path, Grading, Section 1
1210	Syd	Aggregate Base, 6 inch
123	Ton	HMA, 3C
92	Ton	HMA, 4C
173	Ft	Fence, Chain Link, 72 inch
4	Ea	Bollard, Removable
10	Ea	Bollard, Non-Removable
117	Syd	Conc Pavt, Reinf, 6 inch

3 WORKING DAYS BEFORE YOU DIG CALL MISS DIG 1-800-482-7171

NORTH

JJR

METCO SERVICES, INC.

DEGC DETROIT ECONOMIC GROWTH CORPORATION

MDOT Michigan Department of Transportation

**SITE LAYOUT & GRADING PLAN**

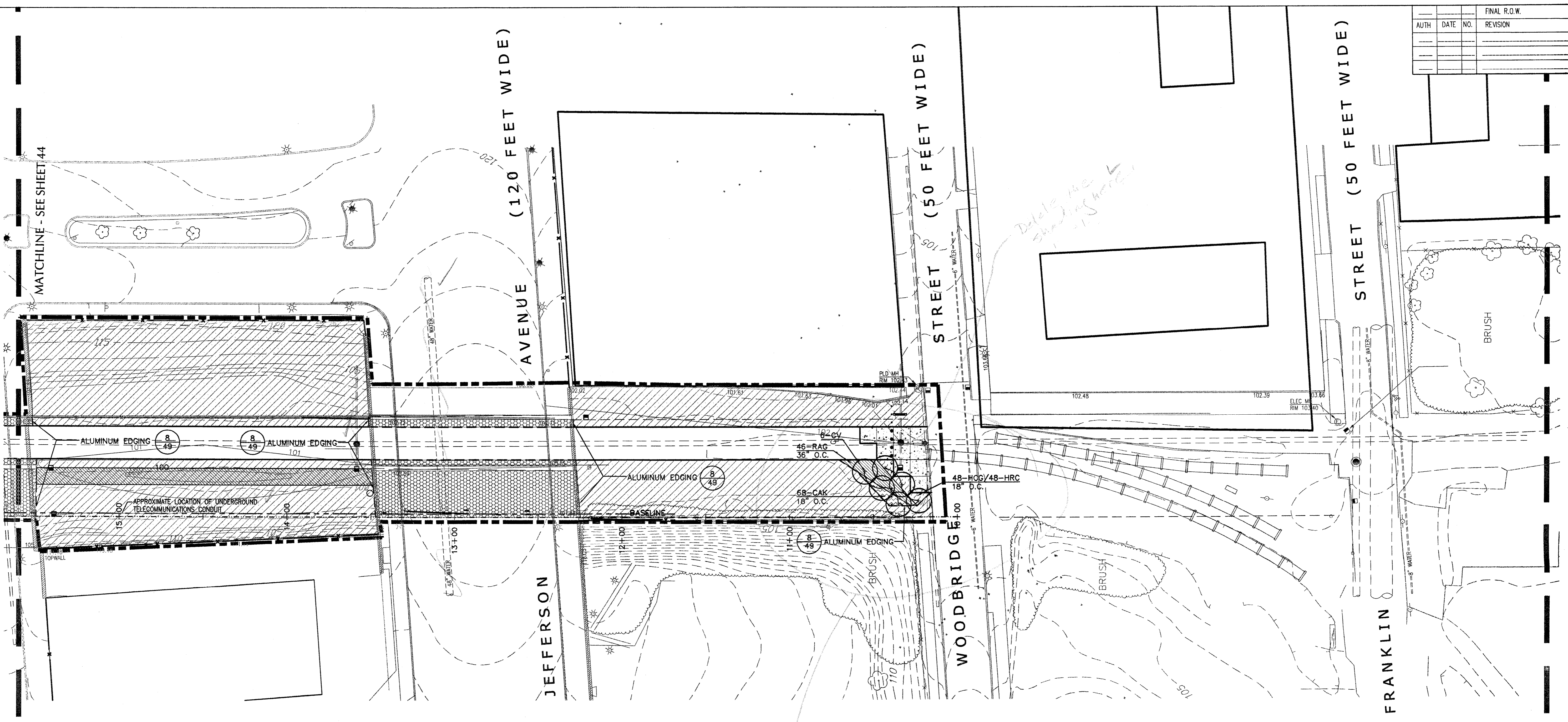
DATE	SCALE	CONT. SEC.	JOB NO.	DESIGN UNIT	SHEET NO. R.O.W.
10/24/05	1"=30'	82702	82619A		33

FINAL R.O.W.

AUTH	DATE	NO.	REVISION

FILE NAME: P:\24464\000\Dequindre Cut\Coal\Sheet\PLNT\1-05.1-PLNT.dwg USER: lcox DATE: Oct, 25 2005 TIME: 08:32 am  
 1 2 3 4 5 6 7 8 9 10 11 12 13 14 15 16 17 18 19 20 21 22 23 24 25 26 27 28 29 30 31 32 33 34 35 36 37 38 39 40 41 42 43 44 45 46 47 48 49 50 51 52 53 54 55 56 57 58 59

EXISTING BY: \_\_\_\_\_ DATE: \_\_\_\_\_  
 PROPOSED BY: \_\_\_\_\_ DATE: \_\_\_\_\_  
 LAST CORRECTION BY: \_\_\_\_\_ DATE: \_\_\_\_\_

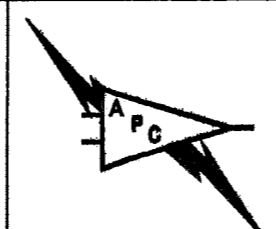
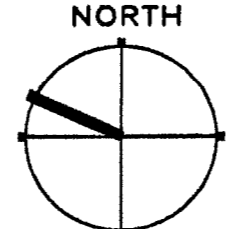


PLANTING LEGEND

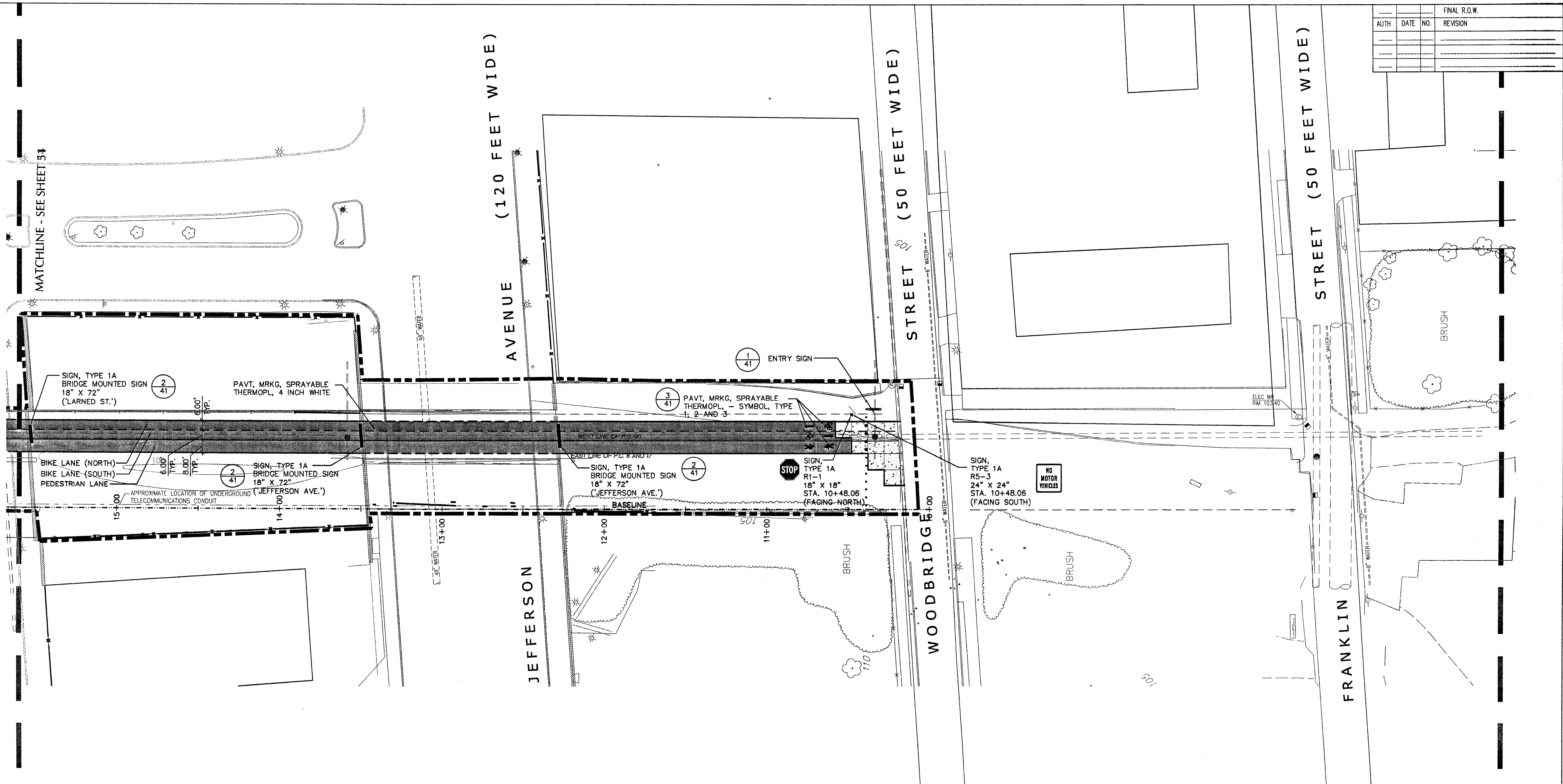
- CANOPY TREE
- ORNAMENTAL TREE
- SHRUBS
- PERENNIALS
- SEEDING, MIXTURE TURF
- ALUMINUM EDGING
- GRASSES
- MULCH BLANKET, HIGH VELOCITY
- MULCH, STONE, 6 INCH

QUANTITIES THIS SHEET		
PARTICIPATORY	UNIT	ITEM
68	Ea	(CAK) Calamagrostis x acutiflora 'Karl Foerster', No. 2 Cont.
6	Ea	(CV) Crataegus viridis 'Winter King', 1-1/2 inch, B&B
48	Ea	(HCA) Hemerocallis 'Chicago Apache', No. 1 Cont.
48	Ea	(HRC) Hemerocallis 'Rocket City', No. 1 Cont.
46	Ea	(RAG) Rhus aromatica 'Gra-low', 30 inch, B&B
423	Cyd	Topsoil Surface, Furr, LM, Modified
491	Syd	Mulch, Stone, 6 inch
173	Lba	Seeding, Mixture TUF
191	Ft	Aluminum Edging
222	Syd	Mulch Blanket, High Velocity
3808	Syd	Straw Mulch

FINAL R.O.W.			
AUTH	DATE	NO.	REVISION

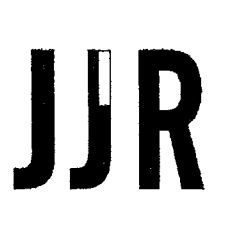
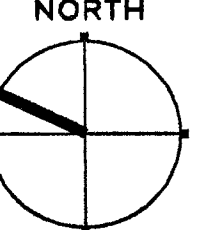


SITE PLANTING PLAN					
DATE	SCALE	CONT. SEC.	JOB NO.	DESIGN UNIT	SHEET NO. R.O.W.
10/24/05	1"=30'	82702	82619A		43



AUTH			DATE			NO.			FINAL R.O.W.		
AUTH			DATE			NO.			REVISION		

QUANTITIES THIS SHEET		
QUANTITY	UNIT	ITEM
33.25	Sft	Sign, Type 1A
36	Ft	Post, Steel, 3lb.
1080	Ft	Pavt Mrkg, Sprayable Thermoapl, 4 inch, white
62	Sft	Sign, Type 1A, Bridge Mounted
4	Ea	Pavt Mrkg, Sprayable Thermoapl, Symbol, Type 1
2	Ea	Pavt Mrkg, Sprayable Thermoapl, Symbol, Type 2
2	Ea	Pavt Mrkg, Sprayable Thermoapl, Symbol, Type 3
1	Ea	Entry Sign

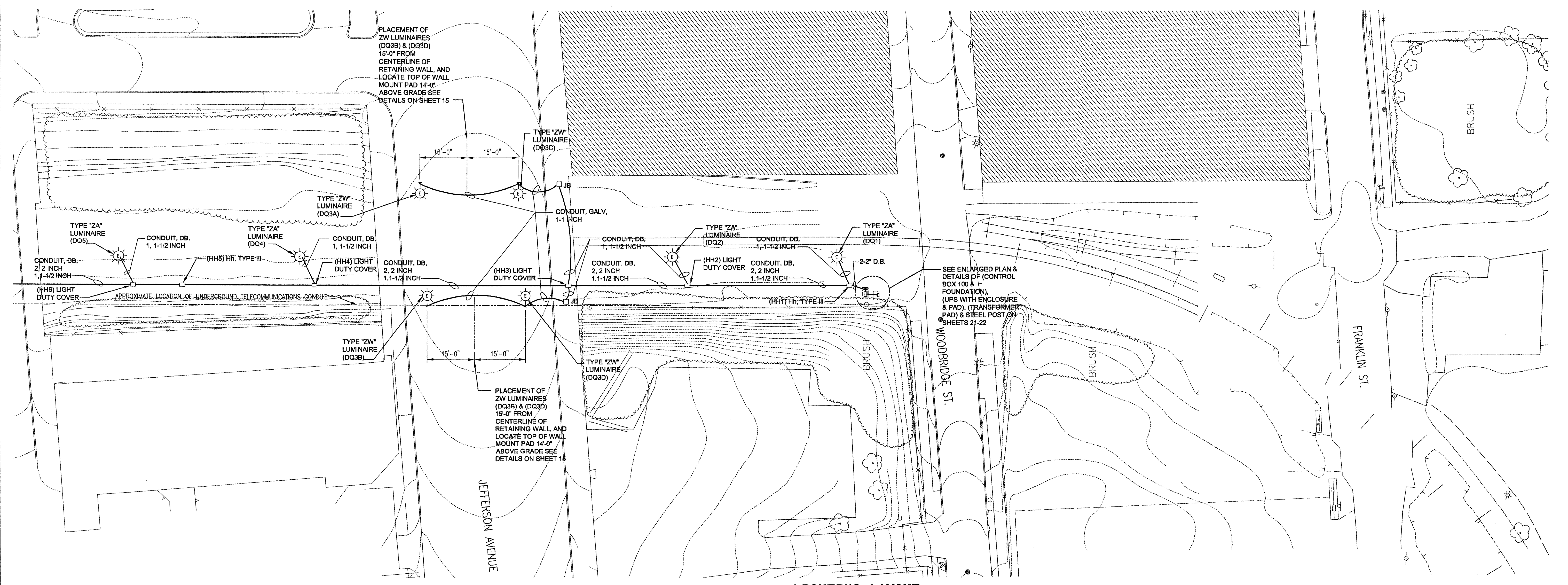


SITE SIGNAGE AND STRIPING PLAN					
DATE	SCALE	CONT. SEC.	JOB NO.	DESIGN UNIT	SHEET NO. R.O.W.
10/24/05	1"=30'	82702	82619A		50

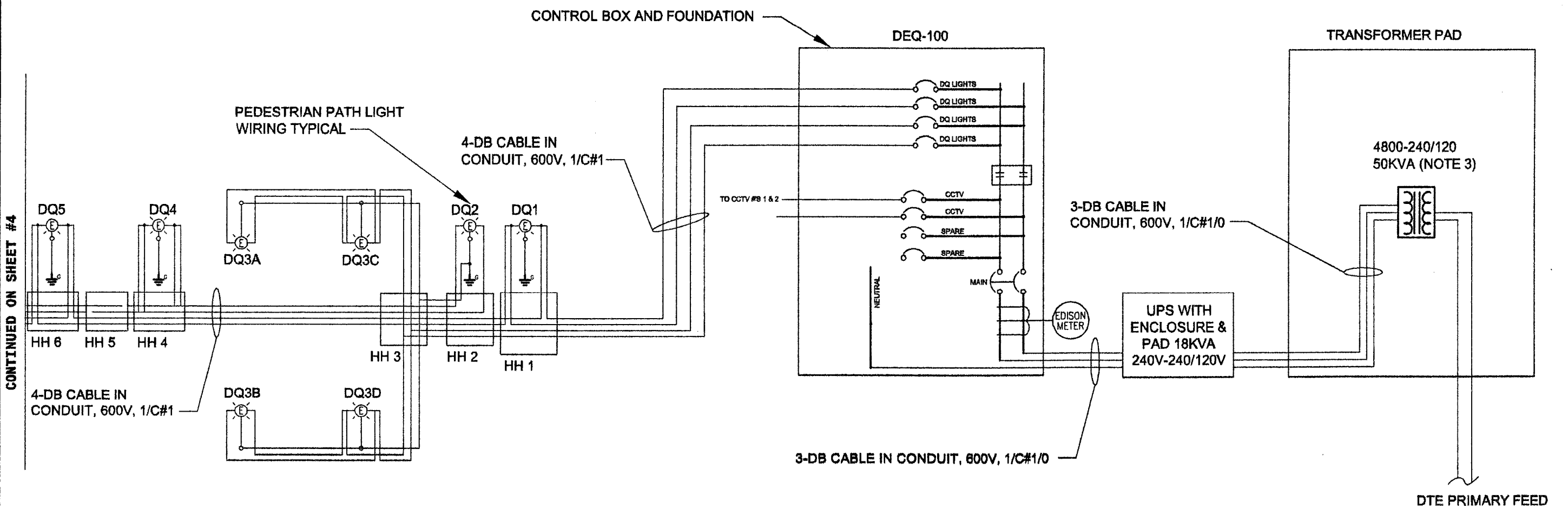
EXISTING BY: \_\_\_\_\_ DATE: \_\_\_\_\_  
 PROPOSED BY: \_\_\_\_\_ DATE: \_\_\_\_\_  
 LAST CORRECTION BY: \_\_\_\_\_ DATE: \_\_\_\_\_

FILE NAME: P:\24464\000\Dequindre Cut\Sheet\LIGHT\AFC-182-Sheets 3-8.dwg USER:lcx DATE: Oct. 25 2005 TIME: 08:59 am  
 1 2 3 4 5 6 7 8 9 10 11 12 13 14 15 16 17 18 19 20 21 22 23 24 25 26 27 28 29 30 31 32 33 34 35 36 37 38 39 40 41 42 43 44 45 46 47 48 49 50 51 52 53 54 55 56 57 58 59

FINAL R.O.W.			
AUTH	DATE	NO.	REVISION



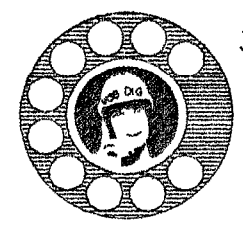
**LIGHTING LAYOUT**  
SCALE: 1"=30'



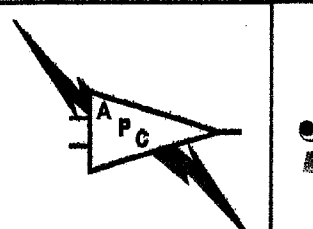
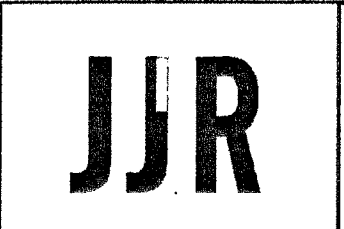
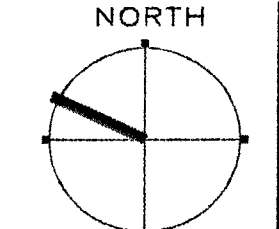
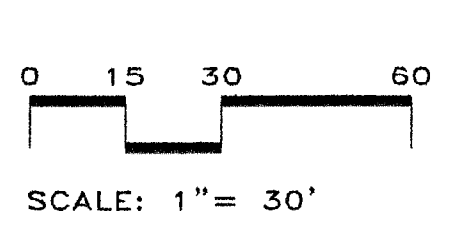
**ELECTRICAL WIRING**  
(N.T.S.)

- NOTES:
- LOCATE OUTSIDE DIA. OF LUMINAIRE BASE 3" FROM EDGE OF SHARED USE PATH SEE DETAIL SHEET -21.
  - LOCATE CONDUIT RUNS AND HANDHOLES 20" FROM EDGE OF SHARED USE PATH
  - PAD MOUNT TRANSFORMER, METER AND PRIMARY CONNECTION PROVIDED BY DTE (NOT IN CONTRACT)
  - SEE LAYOUT DETAILS PAGES 21-22
  - POWER AND FIBER CABLES TO BE RUN IN SEPARATE CONDUITS IN SAME TRENCH
  - TRENCH EXCAVATION SHALL BE USED AS TRENCH BACKFILL
  - INSTALLATION OF TYPE 'ZW' LUMINAIRE SHALL NOT CAUSE DAMAGE TO BRIDGE STRUCTURE

QUANTITIES THIS SHEET		
QTY.	UNIT	ITEM
4	EA	Type 'ZA' Luminaire
4	EA	Type 'ZW' Luminaire
4	EA	Hh, Light Duty Cover
1	EA	Control Box and Foundation
1	EA	Transformer Pad
13	EA	Steel Post
1	EA	UPS with Enclosure and Pad
2	EA	Hh, Type III
750	FT	Conduit, DB, 1, 1-1/2 Inch
250	FT	Conduit, Galv. Steel, 1 Inch, Structure
50	FT	DB Cable in Conduit, 600V, 1/C#1/0
4010	FT	DB Cable in Conduit, 600V, 1/C#1
620	FT	Conduit, DB, 2, 2 Inch



3 WORKING DAYS BEFORE YOU DIG CALL MISS DIG 1-800-482-7171



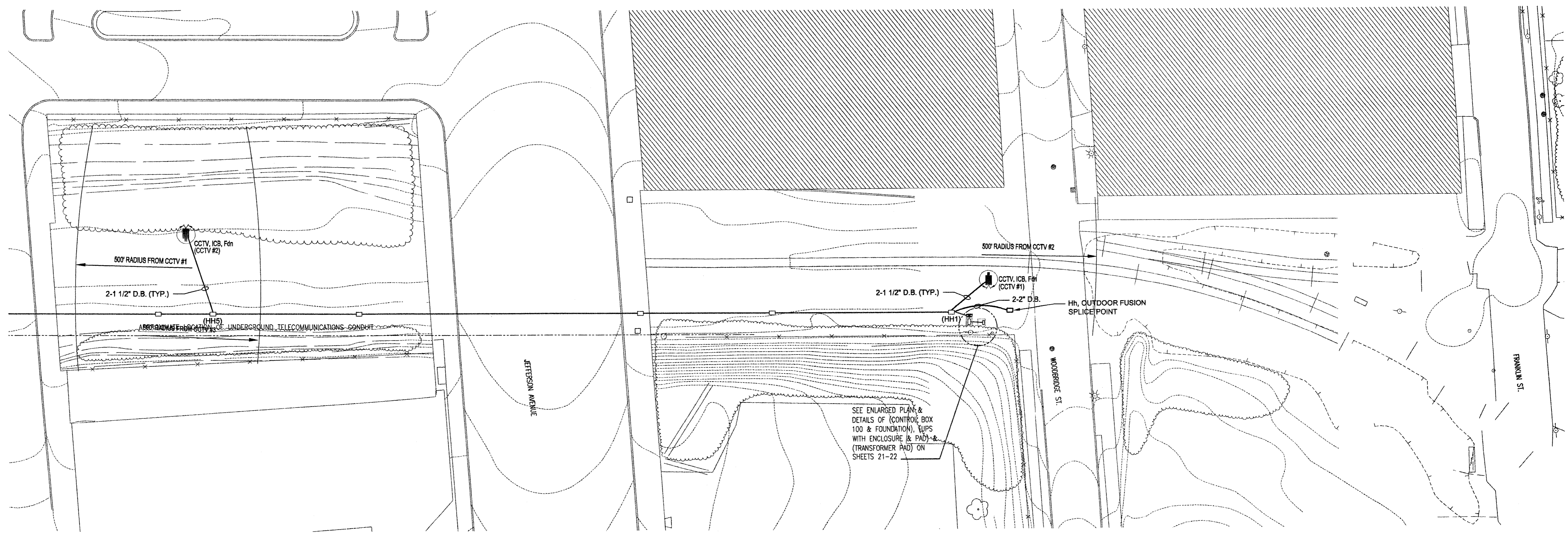
DETROIT ECONOMIC GROWTH CORPORATION



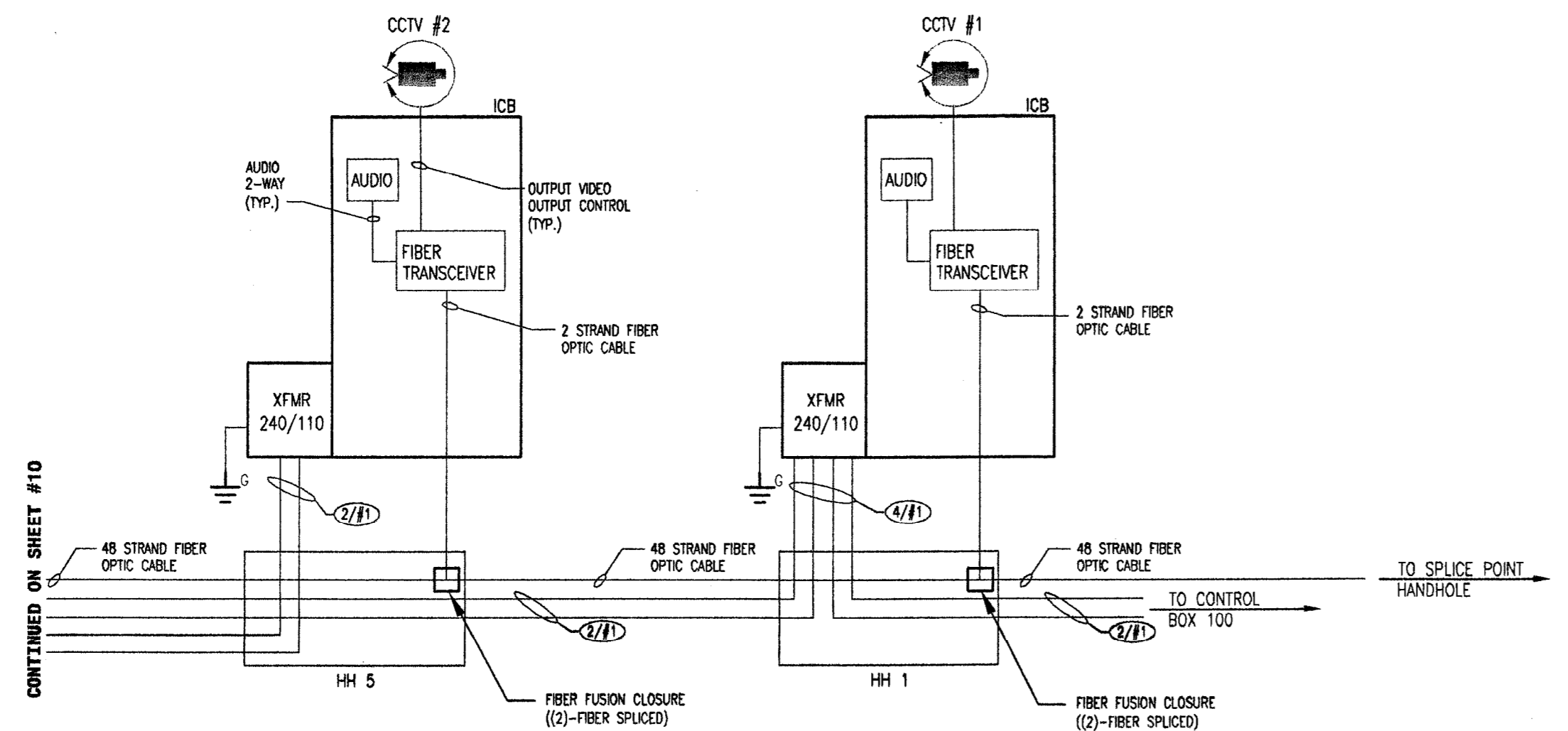
LIGHTING LAYOUT & ELECTRICAL WIRING					
DATE	SCALE	CONT. SEC.	JOB NO.	DESIGN UNIT	SHEET NO.
10/24/05	AS SHOWN	82702	82619A		58

EXISTING BY: DATE: PROPOSED BY: DATE: LAST CORRECTION BY: DATE: FILE NAME: P:\24464\000\Dequindre Cut\Cad\Sheet\LIGHT\APC-182-SHEETS 9-14.dwg USER:icox DATE: Oct, 25 2005 TIME: 09:24 am

FINAL R.O.W.			
AUTH	DATE	NO.	REVISION



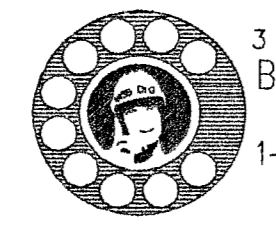
**CCTV / INTERCOM CALL BOX (ICB) LAYOUT**  
SCALE: 1"=30'



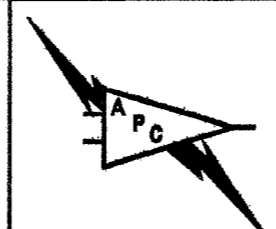
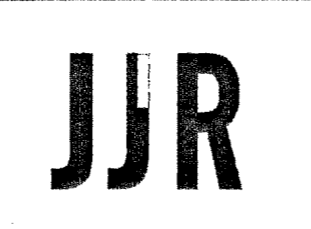
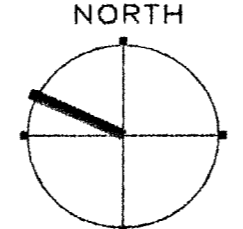
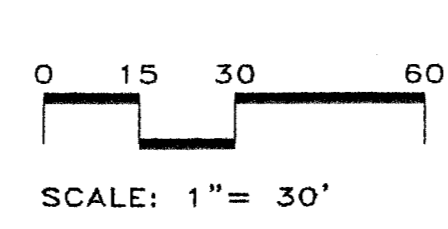
**ELECTRICAL SCHEMATIC**  
N.T.S.

- NOTES:
- LOCATE BASE OF CCTV-ICB 3' FROM EDGE OF SHARED USE PATH
  - POWER AND FIBER CABLES TO BE RUN IN SEPARATE CONDUITS IN SAME TRENCH
  - TRENCH EXISTING FROM SHEETS 3-8

QUANTITIES THIS SHEET		
QTY.	UNIT	ITEM
2	EA	CCTV, ICB, Fdn
2	EA	Fiber Fusion Closure
1	EA	Hh, Outdoor Fusion Splice Point
90	FT	2 Strand ConQuest Fiber Optic Cable, In Conduit, DB
500	FT	48 Strand ConQuest Fiber Optic Cable, In Conduit, DB
40	FT	Conduit, DB, 2, 2inch
90	FT	Conduit, DB, 2, 1-1/2inch
1500	FT	DB Cable, in Conduit, 600V, 1/c #1



3 WORKING DAYS BEFORE YOU DIG CALL MISS DIG 1-800-482-7171

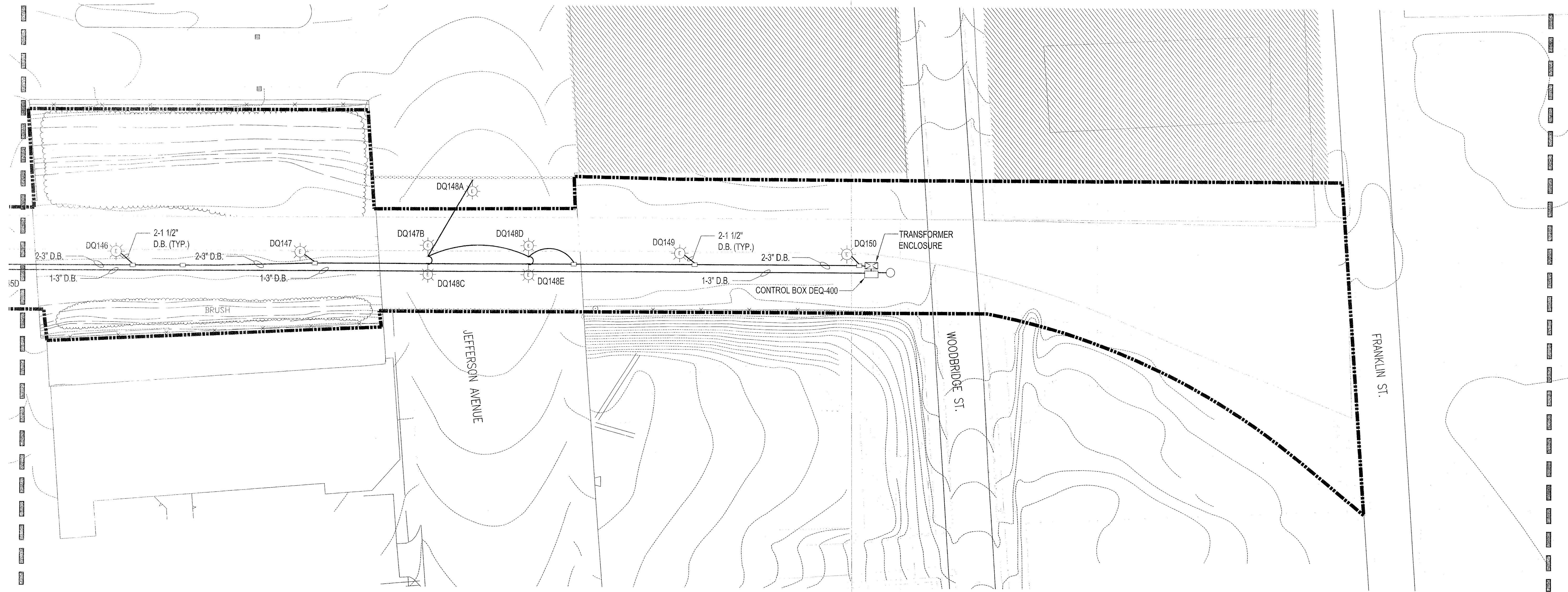


DETROIT ECONOMIC GROWTH CORPORATION



CCTV / INTERCOM CALL BOX LAYOUT & ELECTRICAL SCHEMATIC					
DATE	SCALE	CONT. SEC.	JOB NO.	DESIGN UNIT	SHEET NO. R.O.W.
10/24/05	AS SHOWN	82702	82619A		64





**DEQUINDRE CUT GREENWAY  
NEW PEDESTRIAN LIGHTING LOCATIONS**

SCALE: 1:30

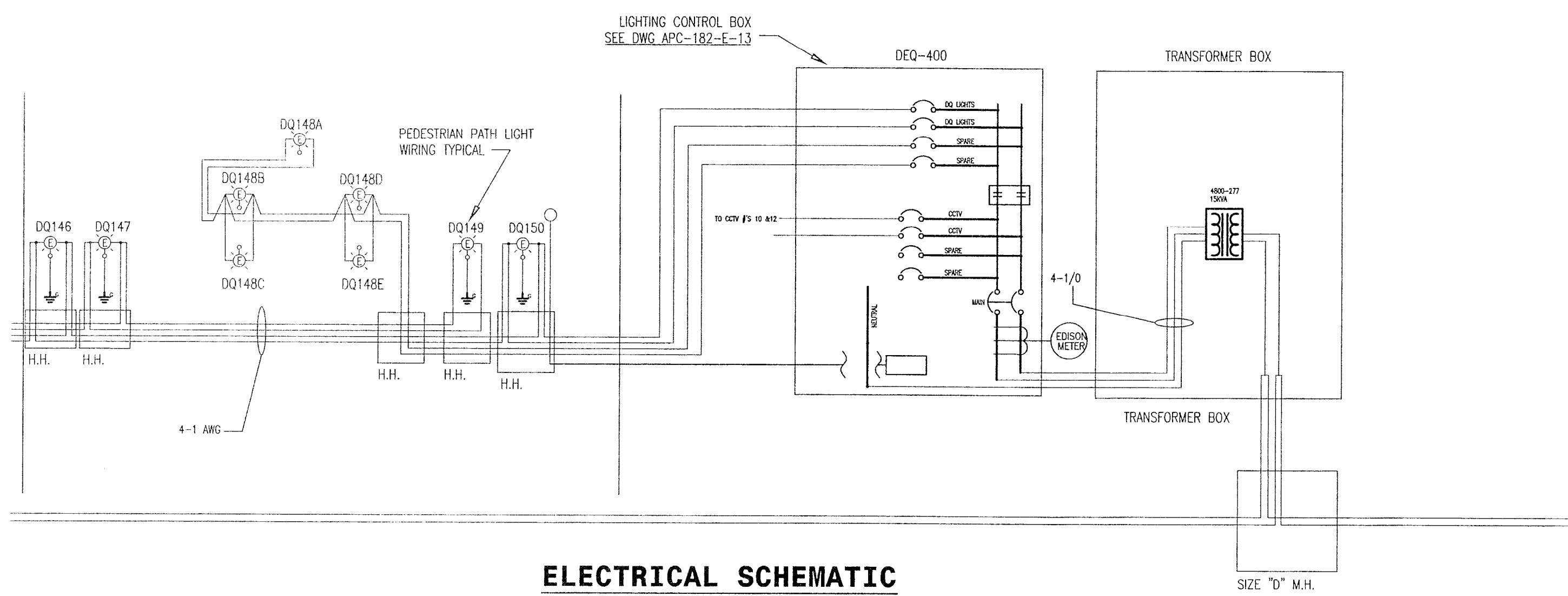


**NOTES:**

1. CONTRACTOR TO INSTALL CONDUIT, LIGHTPOLES AND HANDHOLES AS INDICATED.
- 2.
- 3.
- 4.

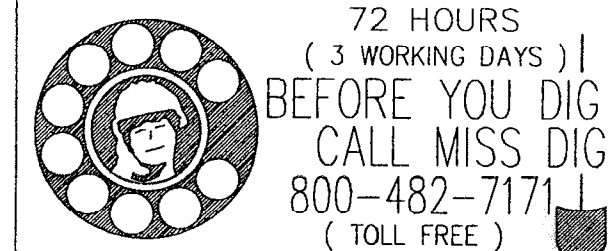
**CONSTRUCTION QUANTITIES THIS SHEET (90% REVIEW)**

- 4 ea Light Std Fdn.
- 4 ea Light Std Shaft, 30 foot or less.
- 4 ea Luminaire, 150W Metal Halide.
- 9 ea Hh, Light Duty Cover
- 1 ea Hh, Type D



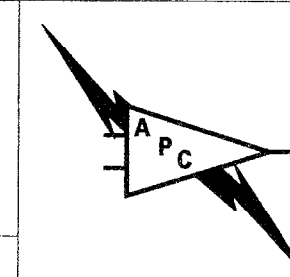
**ELECTRICAL SCHEMATIC**

DATE	DESCRIPTION	CHECKED BY
07-15-06	BOX REVIEW	N.M.
07-26-06	GRADE INSPECTION	N.M.



**DEQUINDRE CUT GREENWAY  
LARNED TO WOODBRIDGE  
LIGHTING LAYOUT &  
ELECTRICAL SCHEMATIC**

APC DRAWING NO. **APC-182-E-11**

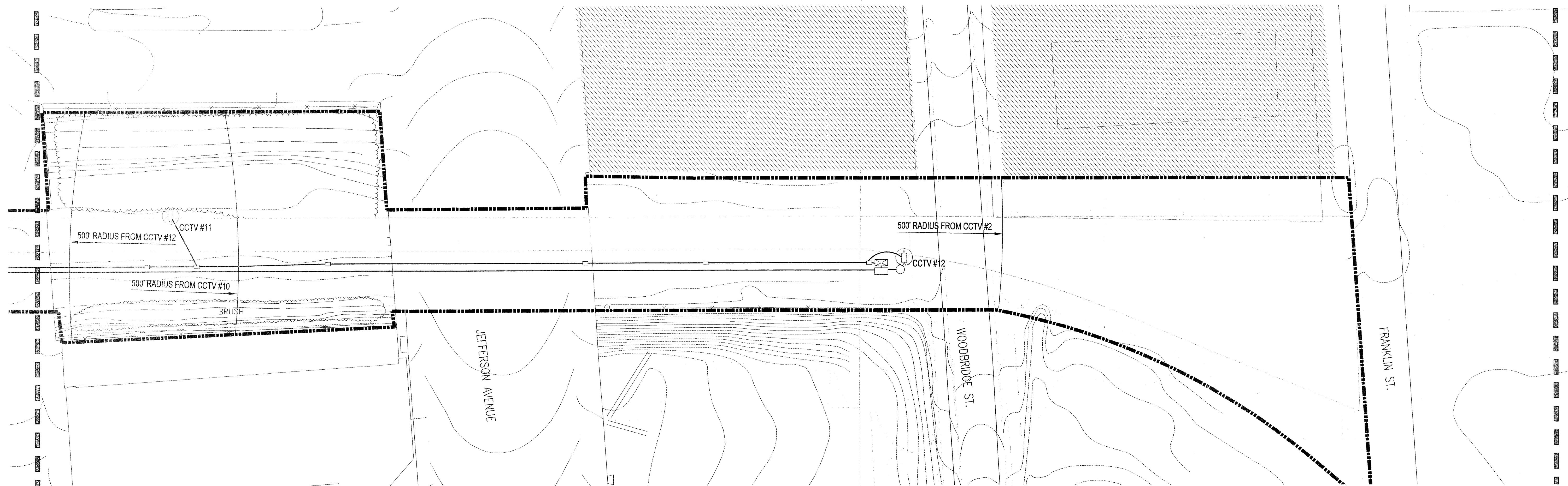


**APPLIED POWER AND  
CONTROLS, INC.**  
3011 West Grand Boulevard, Suite 2413  
Detroit, Michigan 48202  
(313)871-5512 fax (313)871-5053

DRAWN BY  
**M.B.**  
CHECKED BY  
**W.K.V.**  
APPROVED BY  
**M. MACKLIN**

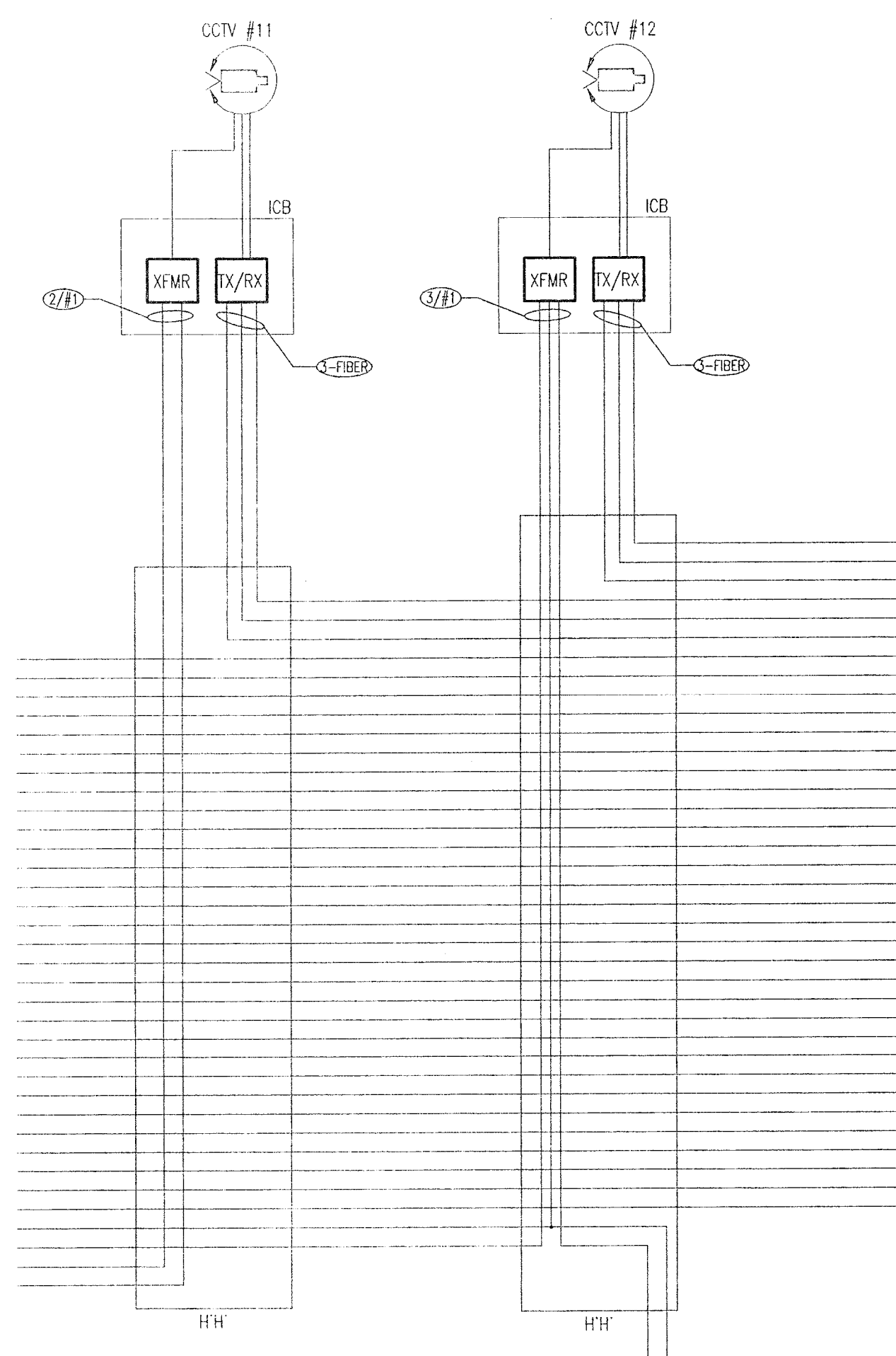


FILE NO.  
**E-11**  
SHEET NO.  
SHEET **6** OF **6**  
DATE  
**07-11-05**



**DEQUINDRE CUT GREENWAY  
SURVEILLANCE CAMERA / CALL BOX LOCATIONS**

SCALE: 1:30

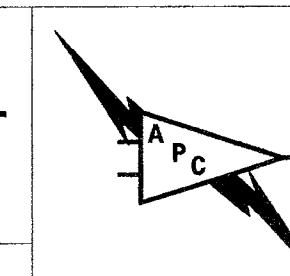


**CALL BOX / SURVEILLANCE CAMERA  
ELECTRICAL SCHEMATIC**

DATE	DESCRIPTION	CHECKED BY
07-15-05	90% REVIEW	M.M.
07-28-05	GRADE INSPECTION	07-28-05

**DEQUINDRE CUT GREENWAY  
LARNED TO WOODBRIDGE  
SURVEILLANCE CAMERA / CALL BOX LAYOUT  
& ELECTRICAL SCHEMATIC**

APC DRAWING No. **APC-182-E-12**

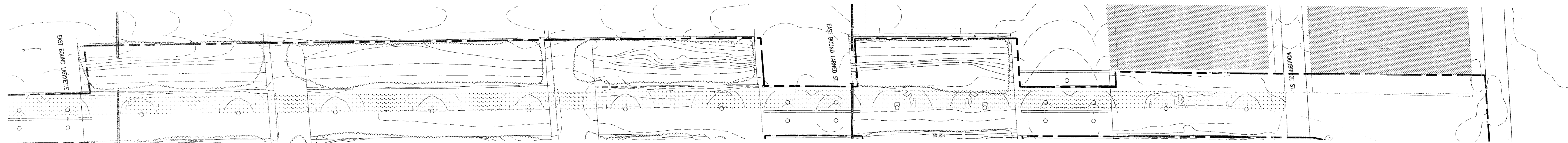


**APPLIED POWER AND  
CONTROLS, INC.**  
3011 West Grand Boulevard, Suite 2413  
Detroit, Michigan 48202  
(313)871-5512 fax (313)871-5053

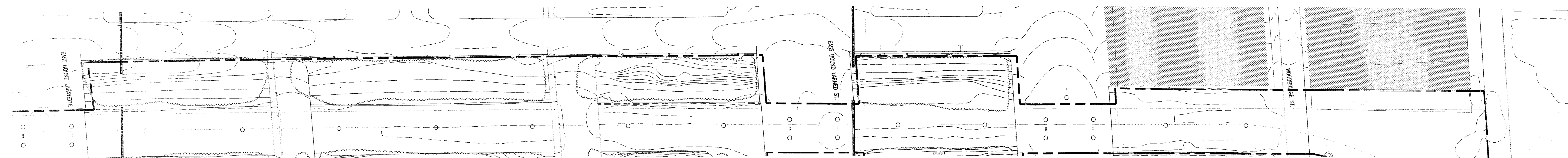
DRAWN BY  
**M. B.**  
CHECKED BY  
**D. LAWTON**  
APPROVED BY  
**M. MACKLIN**

**PUBLIC LIGHTING  
DEPARTMENT**  
  
CITY OF DETROIT

FILE NO. **E-12**  
SHEET NO.  
SHEET **6** OF **6**  
DATE: **07-05-05**



**DEQUINDRE CUT  
PHOTOMETRICS**



**DEQUINDRE CUT  
POLE LOCATIONS**

LUMINAIRE SCHEDULE							
Symbol	Label	Qty	Catalog Number	Description	Lamp	File	Lumens LLF Watts
○	A	47	Z11-150MH-S-P-C-277-SF24-NP-LMS35039A WITH SAMS11-KU-PAP-LMS35039A POLE	ZENITH Z11 PEDESTRIAN LUMINAIRE	150W MH T6	Z47_5ies	13000 0.75 150
○	B	16	Z11-150MH-S-P-C-277-SF24-NP-LMS35039A WITH WALLPACK	ZENITH Z11 PEDESTRIAN WALLPACK LUMINAIRE	150W MH T6	Z47_5ies	13000 0.75 150

STATISTICS					
Description	Avg	Max	Min	Max/Min	Avg/Min
MAIN PATH - SOUTH	0.9 fc	2.3 fc	0.3 fc	7.7:1	3.0:1
PEDESTRIAN/BIKWAY	0.9 fc	2.4 fc	0.3 fc	8.0:1	2.9:1

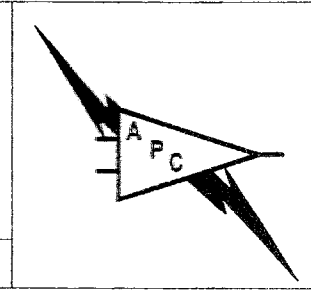
DATE	DESCRIPTION	CHECKED BY



72 HOURS  
(3 WORKING DAYS)  
BEFORE YOU DIG  
CALL MISS DIG  
800-482-7171  
(TOLL FREE)

**DEQUINDRE CUT  
PHOTOMETRIC ANALYSIS  
POLE LOCATION**

APC DRAWING NO. **APC-182-E-14**



**APPLIED POWER AND  
CONTROLS, INC.**  
3011 West Grand Boulevard, Suite 2413  
Detroit, Michigan 48202  
(313)871-5512 fax (313)871-5053

DRAWN BY  
**W.K.V.**  
CHECKED BY  
**M. MACKLIN**  
APPROVED BY  
**W.K.V.**



FILE NO.  
SHEET NO.  
3 of 3  
DATE  
6-22-05