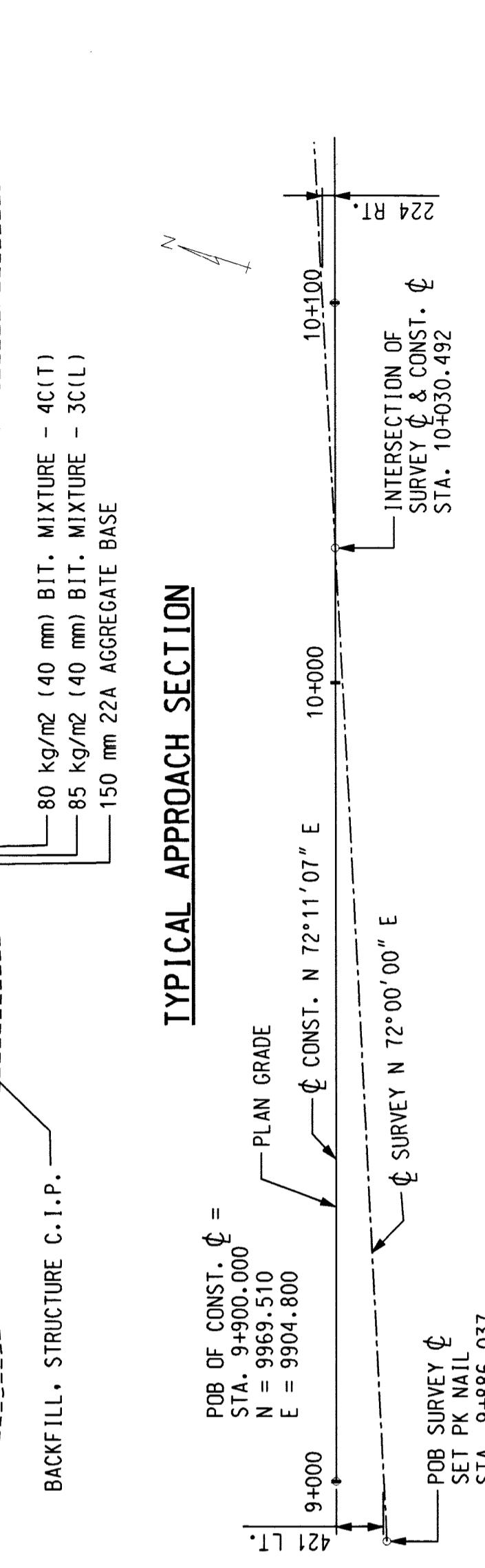
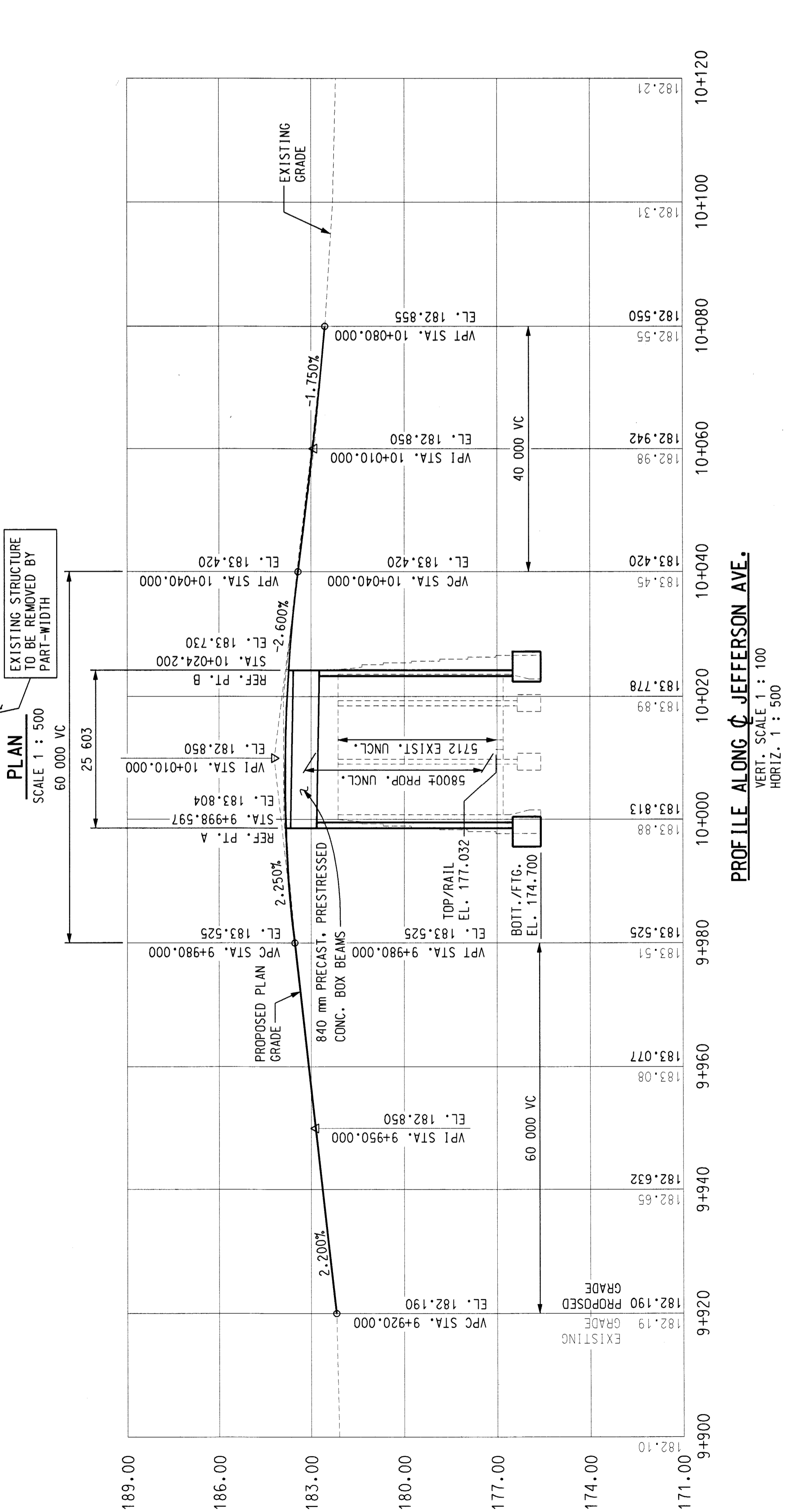
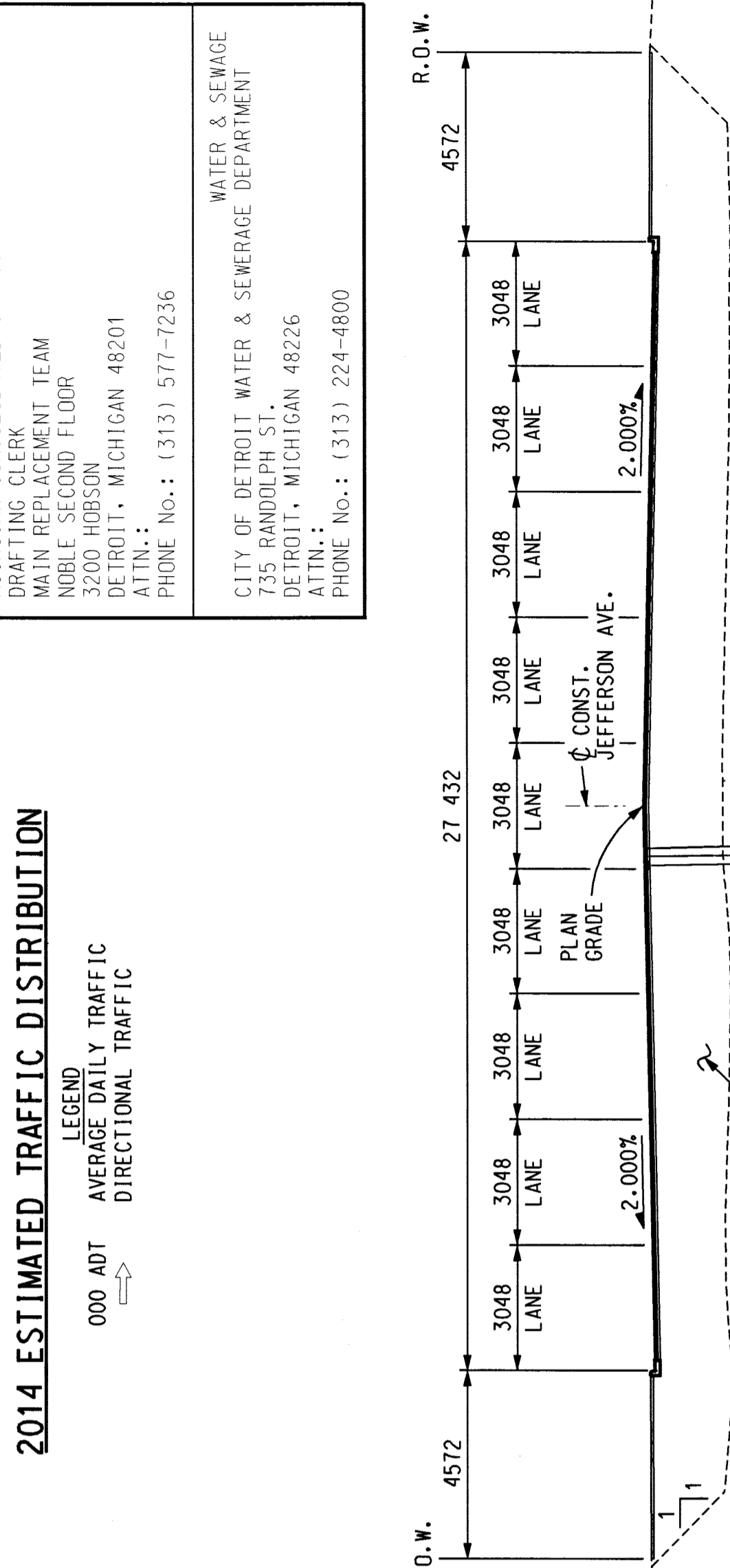
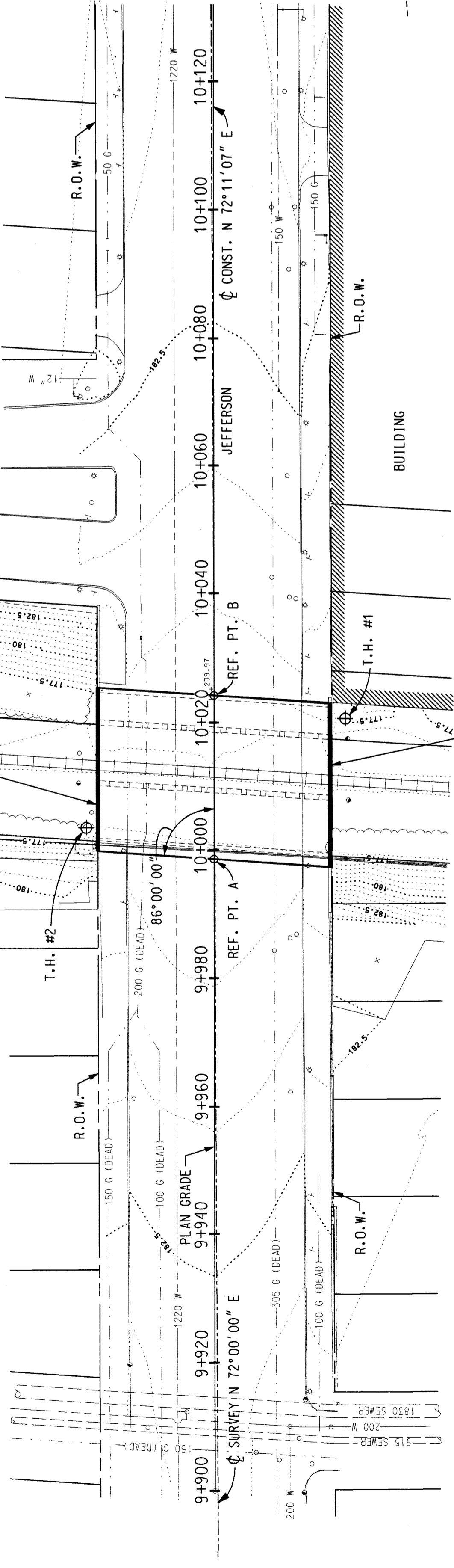
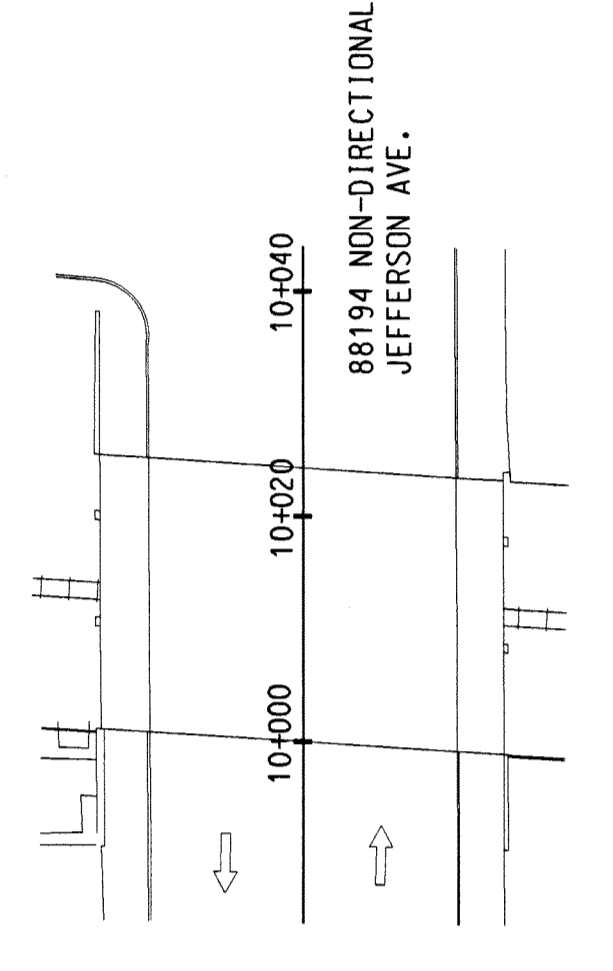


| WITNESSES | |
|------------------|---|
| WITNESS TO CP #1 | P.K. NAIL ON SURVEY ϕ AT STA. 9+944.088 |
| S 74° E | LIGHT POLE 26.325 m |
| S 27° E | METAL SIGN POST 14.321 m |
| S 05° W | METAL SIGN POST 16.131 m |
| S 45° W | LIGHT POLE 31.169 m |
| S 72° W | P.K. NAIL IN SURVEY ϕ AT STA. 9+886.074 |
| | 58.014 m |
| WITNESS TO CP #2 | P.K. NAIL ON SURVEY ϕ AT STA. 10+073.808 |
| N 57° W | LIGHT POLE 23.946 m |
| N 35° E | LIGHT POLE 24.102 m |
| S 70° W | LIGHT POLE 23.029 m |
| S 07° W | LIGHT POLE 16.044 m |
| N 72° E | P.K. NAIL IN SURVEY ϕ AT STA. 10+149.157 |
| | 75.349 m |

| EXISTING STRUCTURE | |
|--|--|
| THREE - SPAN, CONCRETE ENCASED, STEEL BEAM STRUCTURE MEASURING 26.210 METERS REFERENCE LINE TO REFERENCE LINE, BUILT IN 1923, 27.432 mm CLEAR ROADWAY. | |

| BENCH MARK | |
|--|---------------|
| B.M. #CP 7 | ELEV. 183.343 |
| MAG NAIL SE CORNER OF JEFFERSON AVE AND ORLEANS ST. | |
| B.M. #CP 8 | ELEV. 183.602 |
| MAG NAIL IN SIDEWALK WEST OF BRIDGE NORTH SIDE OF JEFFERSON AVE. | |
| B.M. #CP 9 | ELEV. 182.880 |
| MAG NAIL IN BOULEVARD OF ST. AUBIN AVE. | |

| UTILITIES | |
|--|------------------|
| DETROIT EDISON 2000 SECOND AVE. ROOM 607 G.O. - DETROIT, MICHIGAN 48226 ATTN: JOHN SOULIERE PHONE No.: (313) 235-6597 | ELECTRIC |
| AMERITECH 4000 ALLEN RD., ROOM 101 ALLEN PARK, MICHIGAN 48101 ATTN: DAVE BUCIENSKI PHONE No.: (313) 389-9819 | TELEPHONE |
| MICHIGAN CONSOLIDATED GAS CO. DRAFTING CLERK MAIN REPLACEMENT TEAM NOBLE SECOND FLOOR 3200 HOBSON DETROIT, MICHIGAN 48201 ATTN: PHONE No.: (313) 577-7236 | GAS |
| CITY OF DETROIT WATER & SEWERAGE DEPARTMENT 735 RANDOLPH ST. DETROIT, MICHIGAN 48226 ATTN: PHONE No.: (313) 224-4800 | WATER & SEWERAGE |



NOTES:

THE WORK COVERED BY THESE PLANS INCLUDES MAINTAINING TRAFFIC, REMOVAL OF EXISTING BRIDGE, CONSTRUCTION OF THE PROPOSED BRIDGE AND APPROACH WORK.

THE CONTRACTOR SHALL LOCATE ALL ACTIVE UNDERGROUND UTILITIES PRIOR TO STARTING WORK AND SHALL CONDUCT HIS OPERATIONS IN SUCH A MANNER AS TO ENSURE THAT THOSE UTILITIES NOT REQUIRING RELOCATION WILL NOT BE DISTURBED.

THE GROUND ADJACENT TO THE TRACKS AND STRUCTURE SHALL BE GRADED BY THE CONTRACTOR TO PROVIDE DRAINAGE.

JEFFERSON AVENUE TRAFFIC IS TO BE MAINTAINED OVER THE BRIDGE BY PART-WIDTH CONSTRUCTION.

DATUM REFERS TO N.A.V.D. DATUM.

THE TRAIN MOVEMENT AND SPEED INFORMATION SHOWN IN THE PROPOSAL DOES NOT REPRESENT A COMMITMENT BY NORFOLK SOUTHERN RAILROAD AND IS SUBJECT OF CHANGE WITHOUT NOTICE.

BACKFILL, STRUCTURE, C.I.P., CUBIC METERS.

METRIC

DIMENSIONS ARE IN MILLIMETERS UNLESS OTHERWISE SHOWN. ELEVATIONS, COORDINATES, CURVE AND ALIGNMENT DATA ARE IN METERS. STATIONS ARE IN KILOMETERS + METERS.

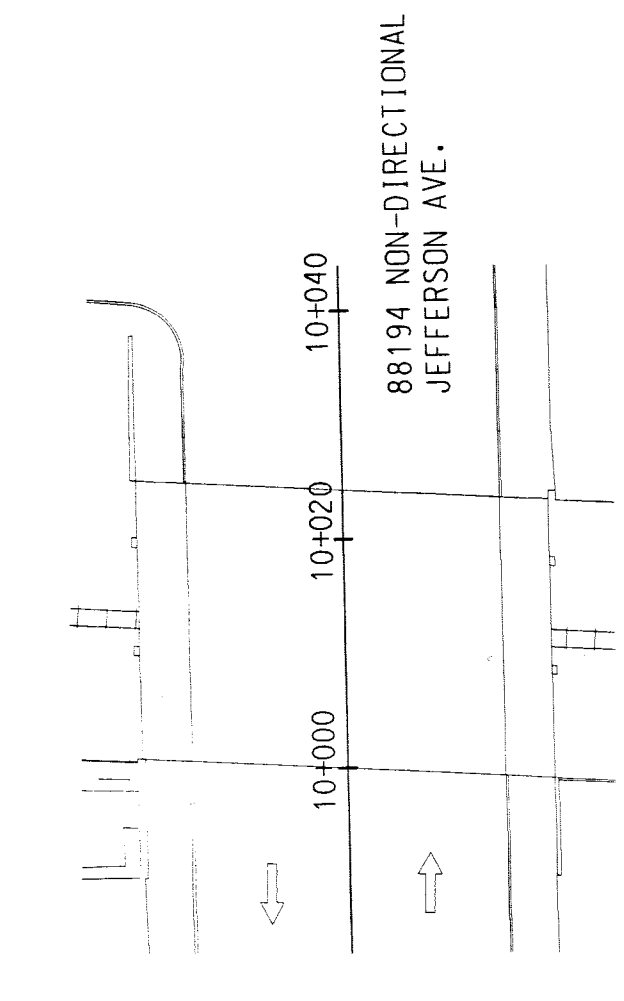
TYPE, SIZE & LOCATION PLAN

| | | | | |
|--|--|--------------------------|---|----------------------|
| | | | | |
| | SNELL ENVIRONMENTAL GROUP, INC. A B2Z Company 151 W. CONGRESS, SUITE 328 DETROIT, MICHIGAN 48226 TELEPHONE (313) 961-4060 | CITY OF DETROIT MICHIGAN | JEFFERSON AVENUE OVER NORFOLK SOUTHERN RAILROAD | GENERAL PLAN OF SITE |

| REVISIONS | |
|-----------|-------------|
| DESIGN BY | M.A.M. 4-98 |
| DR'N BY | R.J.D. 4-98 |
| CK'D BY | R.G.W. 4-98 |
| APP'D BY | -98 |

PROFILE ALONG JEFFERSON AVE.
 VERT. SCALE 1 : 100
 HORIZ. SCALE 1 : 500

| UTILITIES | |
|----------------|---|
| ELECTRIC | DETROIT EDISON 2000 SECOND AVE. ROOM 607 G.C., DETROIT, MICHIGAN 48226 ATTN.: JOHN SQUIRES PHONE NO.: (313) 235-6597 |
| TELEPHONE | AMERITECH 4000 ALLEN RD., ROOM 101 ALLEN PARK, MICHIGAN 48101 ATTN.: DAVE BUCIENSKI PHONE NO.: (313) 389-9819 |
| GAS | MICHIGAN CONSOLIDATED GAS CO. DRAFTING CLERK MAIN REPLACEMENT TEAM NOBLE SECOND FLOOR 3200 HOBSON DETROIT, MICHIGAN 48201 ATTN.: PHONE NO.: (313) 577-7236 |
| WATER & SEWAGE | CITY OF DETROIT WATER & SEWERAGE DEPARTMENT 735 RANDOLPH ST. DETROIT, MICHIGAN 48226 ATTN.: PHONE NO.: (313) 224-4800 |

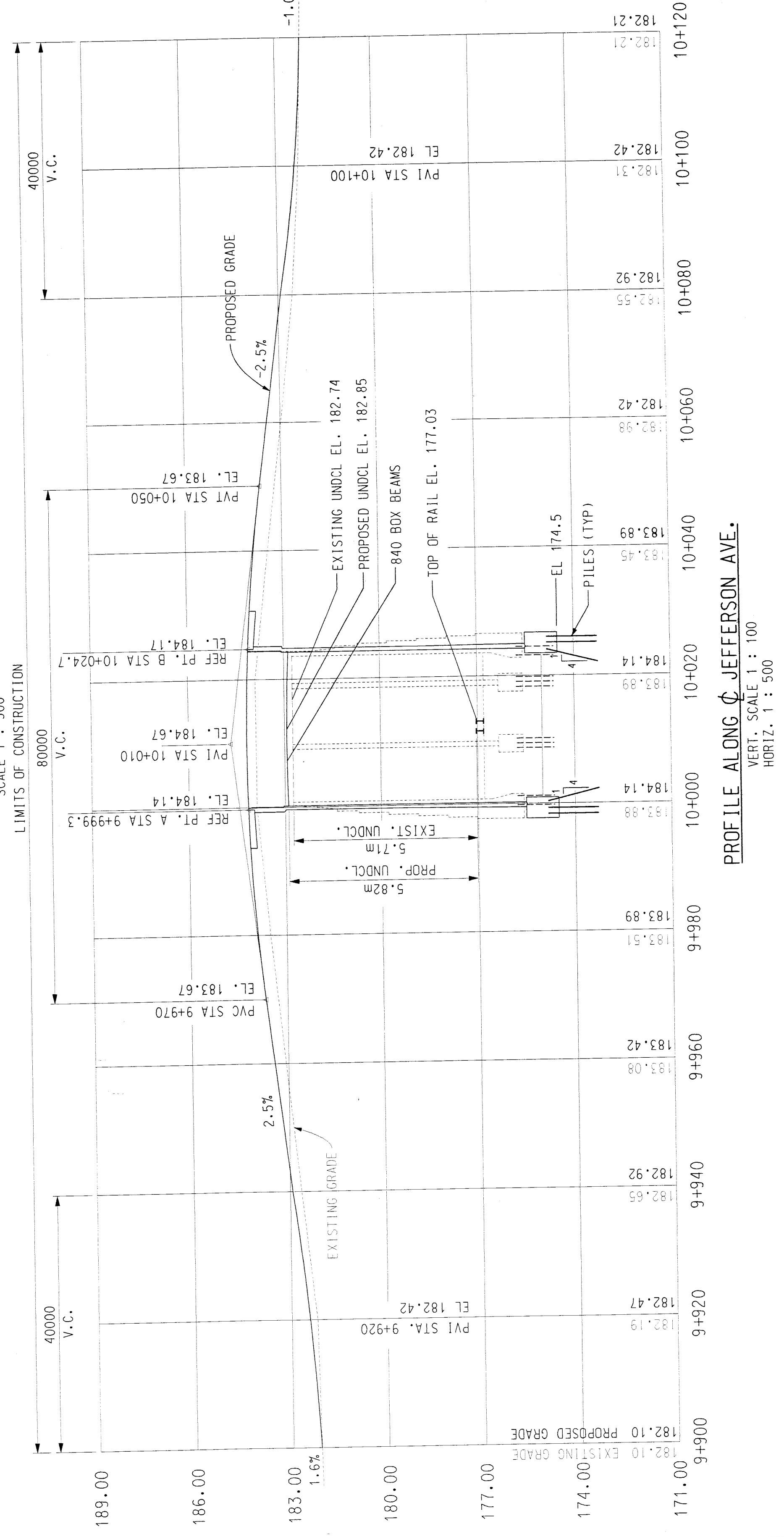
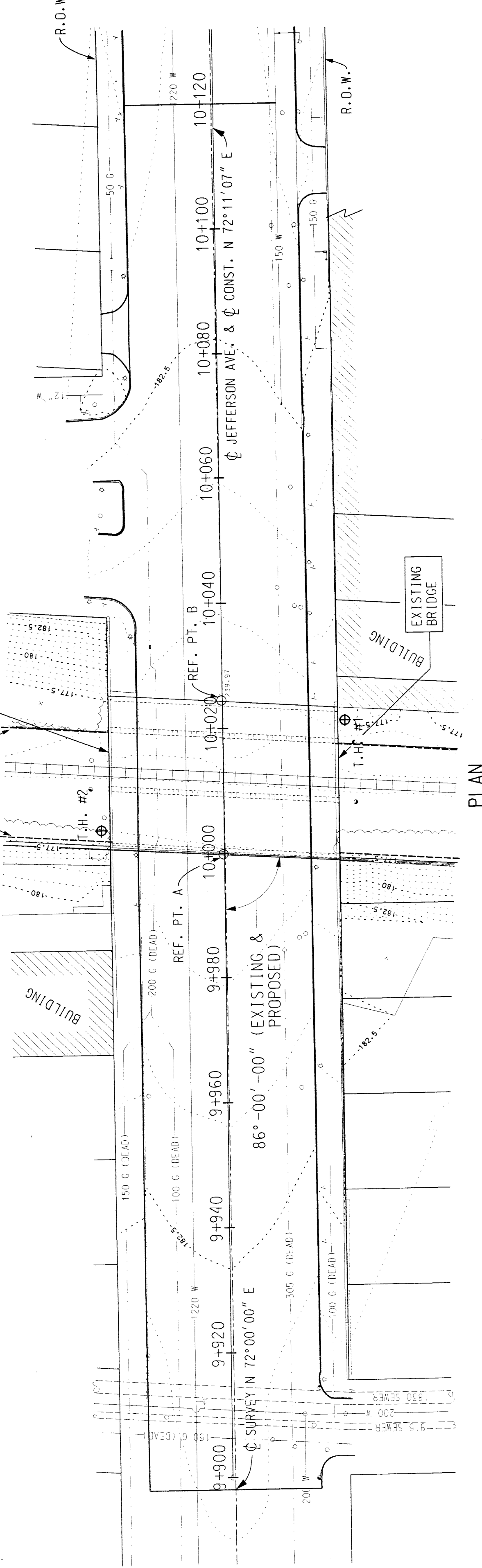


2014 ESTIMATED TRAFFIC DISTRIBUTION

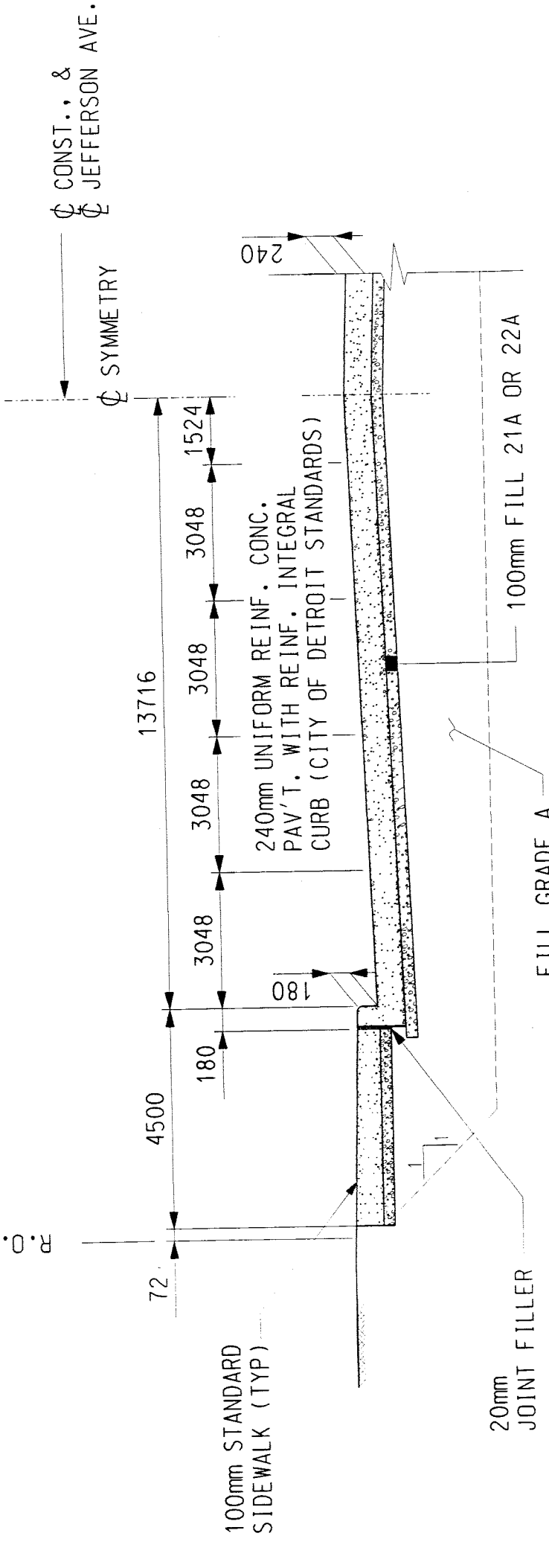
| BENCH MARK | |
|--|---------------|
| B.M. #61-255A MONUMENT BOX IN SIDEWALK IN NORTHEAST QUADRANT OF SCRIPPS AND PHILIP | ELEV. 174.871 |
| B.M. #62-254A MONUMENT BOX IN SIDEWALK IN NORTHEAST QUADRANT OF AYONDALE AND PHILIP | ELEV. 175.006 |

EXISTING STRUCTURE
THREE - SPAN, CONCRETE ENCASED, STEEL BEAM STRUCTURE MEASURING 25.603 METERS REFERENCE LINE TO REFERENCE LINE. CONCRETE ABUTMENTS WITH TWO CONCRETE PIERS ON WOOD PIERS BUILT IN 1923. 27' 432 mm CLEAR ROADWAY.

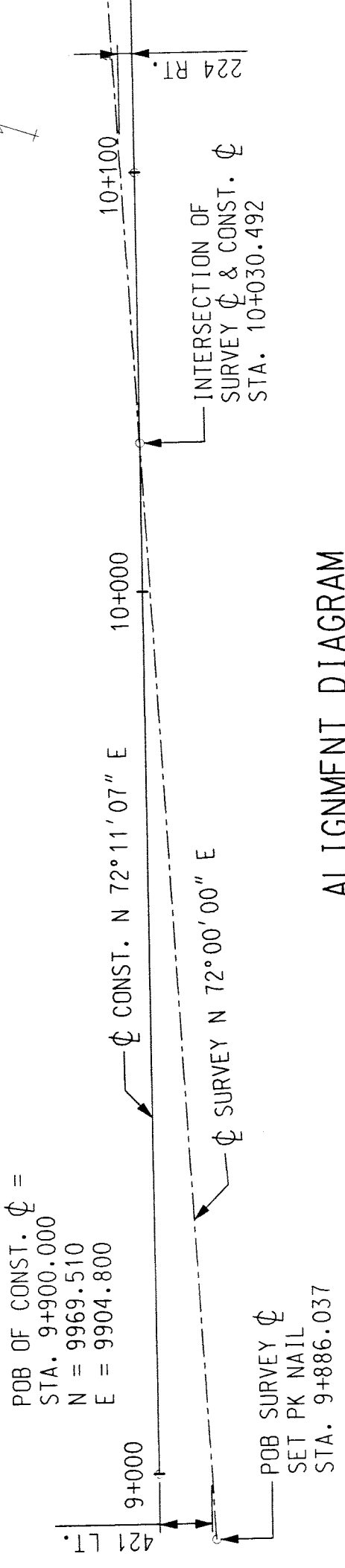
| WITNESSES | |
|------------------|------------|
| WITNESS TO CP #1 | 9+944.088 |
| S 74° E | 26.325m |
| S 27° E | 14.927m |
| S 05° W | 16.137m |
| S 45° W | 31.169m |
| S 72° W | 58.014m |
| WITNESS TO CP #2 | 10+073.808 |
| N 57° W | 23.946m |
| N 35° E | 24.102m |
| S 70° E | 23.029m |
| S 07° W | 16.044m |
| N 72° E | 75.349m |



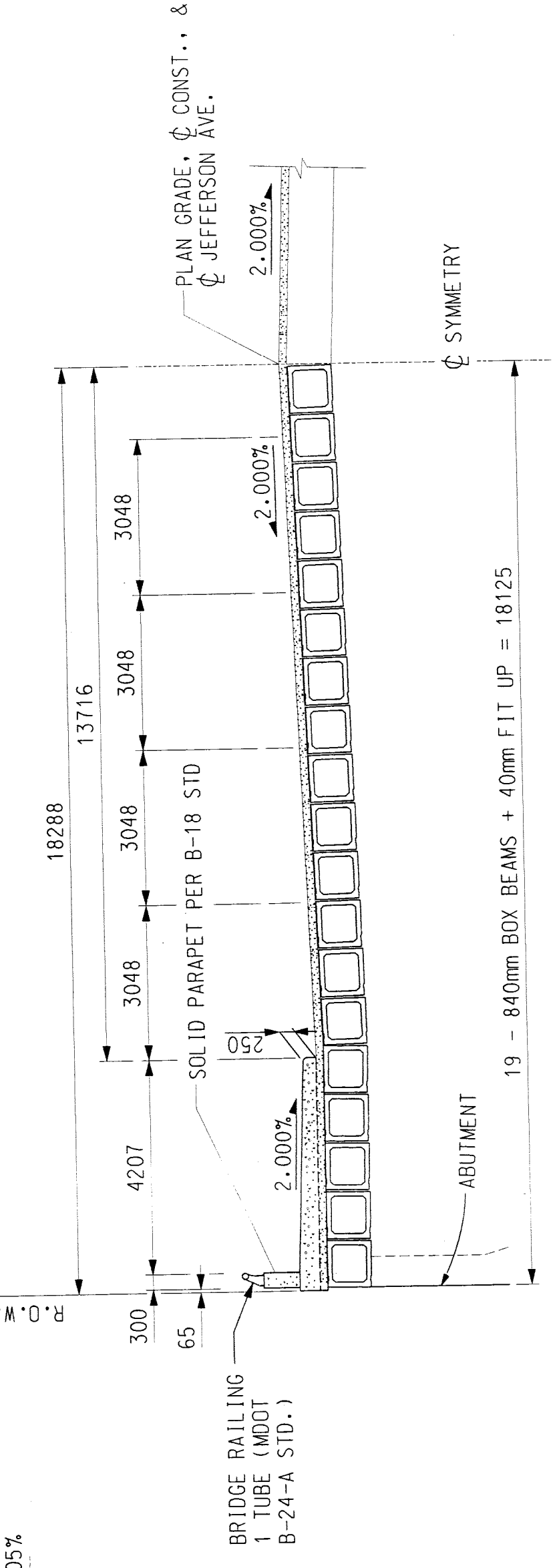
PROFILE ALONG JEFFERSON AVE.
VERT. SCALE 1 : 100
HORIZ. 1 : 500



TYPICAL APPROACH SECTION
NTS



ALIGNMENT DIAGRAM



DECK SECTION
NTS

METRIC

DIMENSIONS ARE IN MILLIMETERS UNLESS OTHERWISE SHOWN. ELEVATIONS, COORDINATES, CURVE AND ALIGNMENT DATA ARE IN METERS. STATIONS ARE IN KILOMETERS + METERS.

| | |
|-------------|--------------|
| SCALE | NOT TO SCALE |
| PROJECT NO. | 9641-5160-05 |
| SHEET NO. | 1 OF 1 |

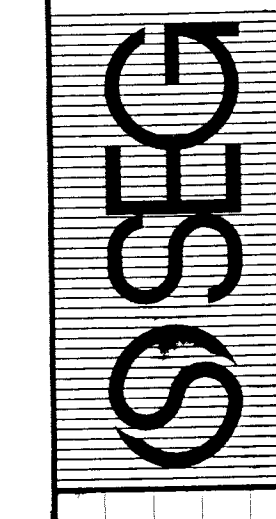
TYPE & LOCATION
SIZE & PLAN

JEFFERSON AVENUE
OVER GRAND TRUNK
WESTERN RAILROAD

CITY OF DETROIT
MICHIGAN



SNELL ENVIRONMENTAL GROUP, INC. A REG. COMPANY
100 W. CONGRESS SUITE 528
DETROIT, MICHIGAN 48226
TELEPHONE (313) 961-8040



| REVISIONS | DSGN BY | N.G.H. | 1-99 |
|-----------|----------|--------|------|
| | DR'N BY | E.W.O. | 1-99 |
| | CK'D BY | R.G.W. | 1-99 |
| | APP'D BY | | -99 |