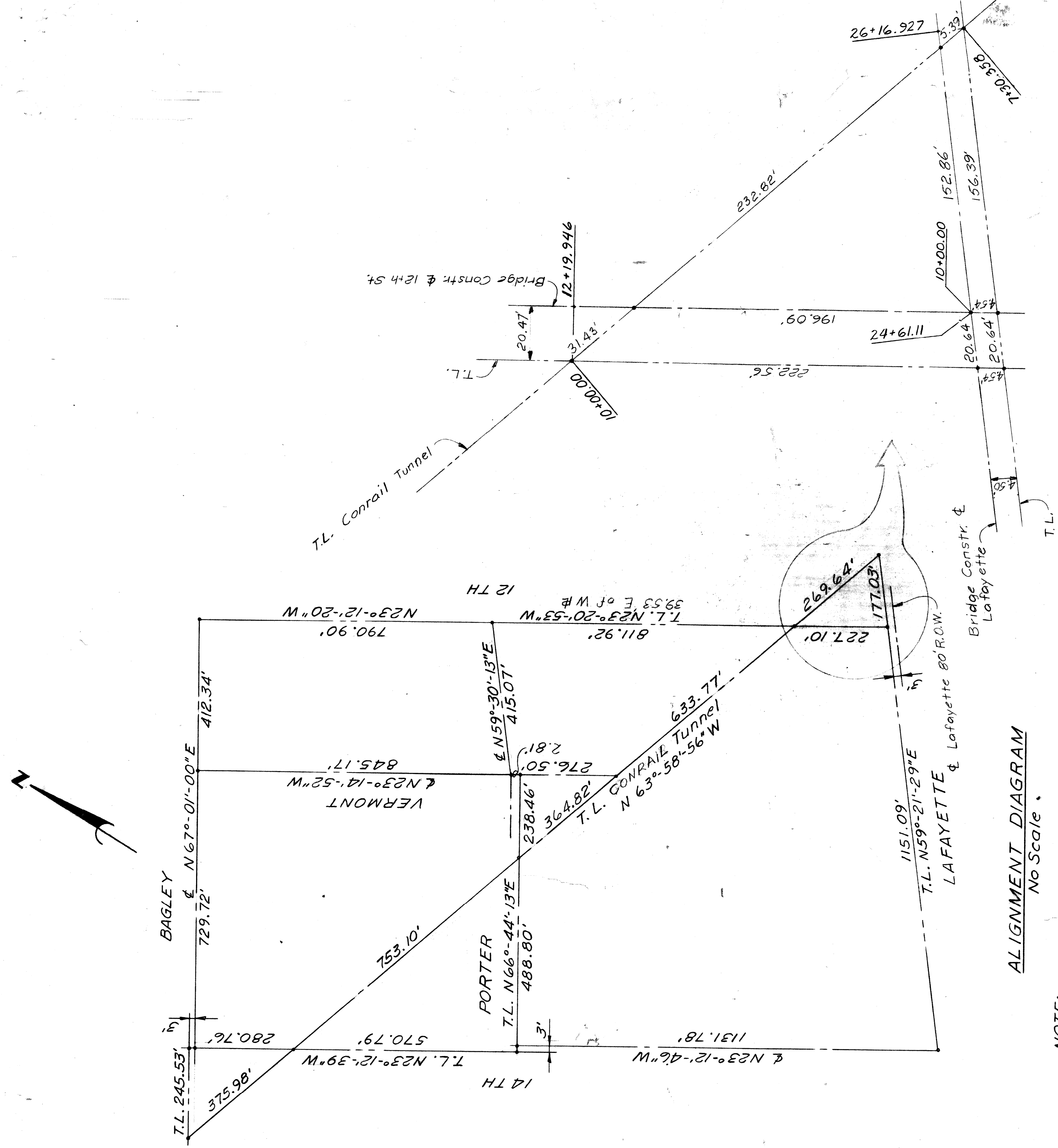


Notes:
 ● Indicates Test Hole for Soil Profile
 Heavy Lines & Shaded areas denotes new Bridge construction



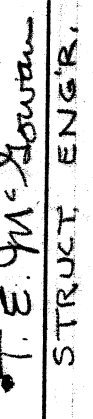
NOTE:
 T.L. 12th St. is 39.53' E. of W.R.
 T.L. Conrail is 3.75' N. of & Tunnel
 T.L. Lafayette is 43' N. of S.R.

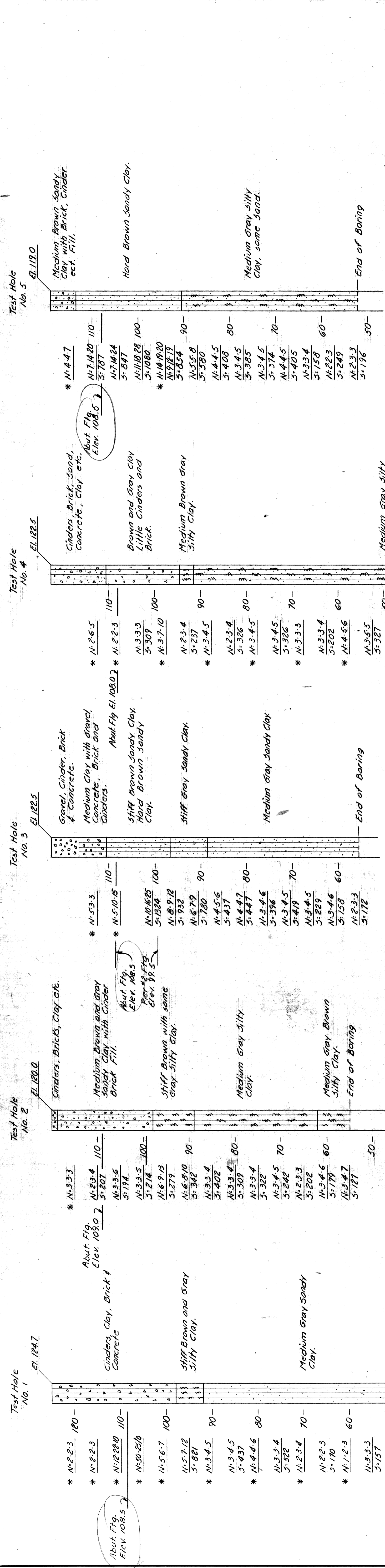
Bridge Numbers
 M.D.S.H. & T.
 City of Detroit
 Consolidated Rail Corp.
 U.S. Department of Transportation
 512269 U

Lafayette Street
 X.O.I. of 82-22-58
 X.O.-61
 0.74
 512268 M

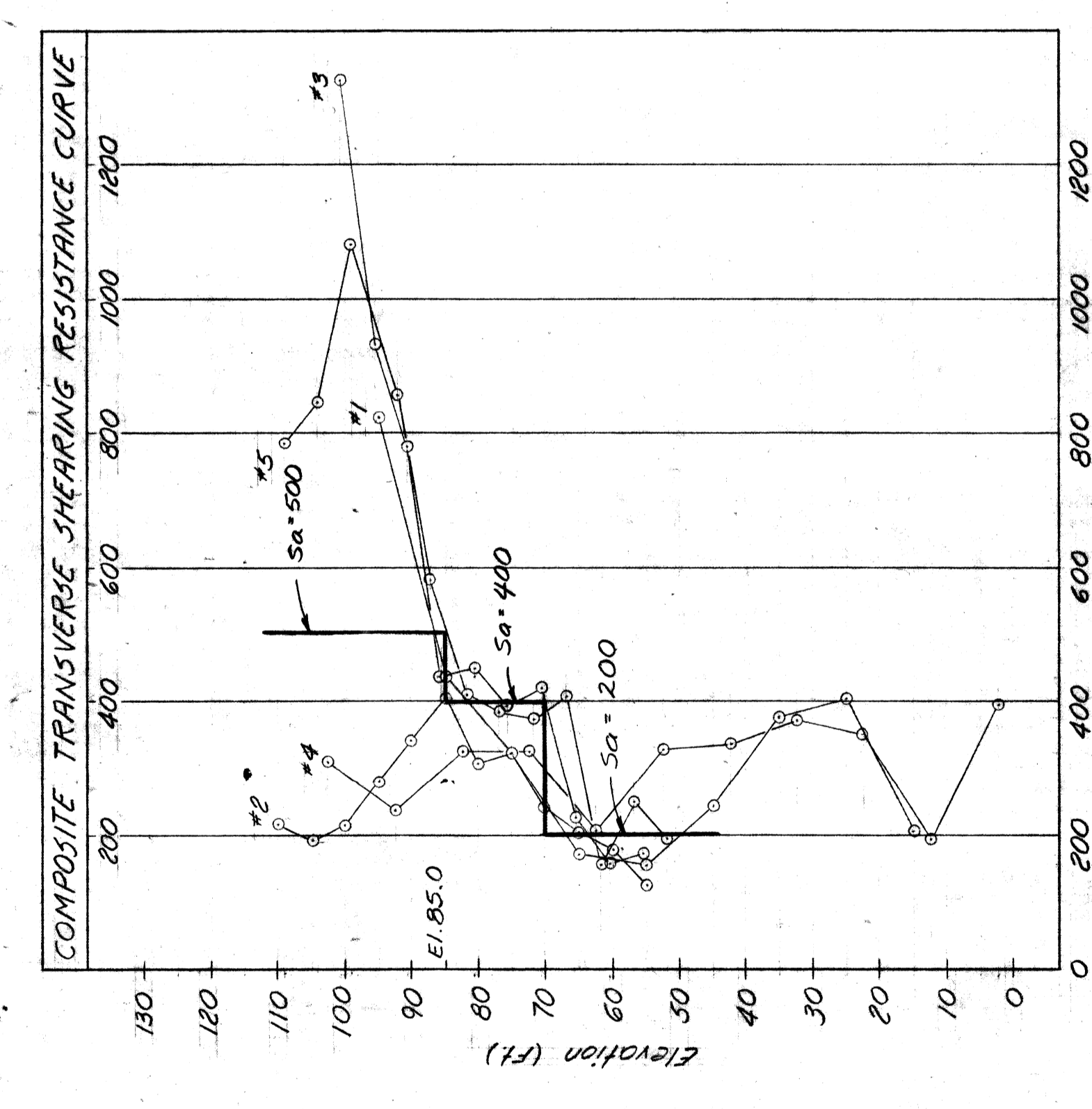
12th Street (Rosa Parks Blvd.)
 X.O.I. of 82-22-59
 X.O.-60
 0.75
 512269 U

Change of R.R. Forests
 5/22/78

SHEET <u>1</u> OF <u>2</u> SHEETS CONTRACT NO. 77-22-13 DRWG NO. 5101 DATE 2-2-78	
12TH ST. (ROSA PARKS BLVD.) & LAFAYETTE ST. CROSSING CONRAIL	
GENERAL PLAN OF SITE	
CITY OF DETROIT CITY ENGINEERS DIV. E&M.D. FOR	
MICHIGAN DEPARTMENT OF STATE HIGHWAYS & TRANSPORTATION CITY ENGINEER	
APPROVED  STRUCT. ENGR.	DESIGNED BY M. G. G. G.
DRAWN BY R. H.	TRACED BY
CHECKED BY	REVISIONS LOCATED BY COORDINATES ON SHEET
REFERENCE CHANGES	DESCRIPTION DATE



Notes for Test Holes:
 Drive N.X. casing to 17'-0" below ground surface. Water level was 12'-0" below ground surface @ 1 hr. after completion.
 Drive N.X. casing to 30'-0" below ground surface. Water level was 24'-0" below ground surface @ 1 hr. after completion.
 Drive N.X. casing to 80'-0" below ground surface. Water level was 12'-0" below ground surface @ 1 hr. after completion.
 Drive N.X. casing to 17'-0" below ground surface. Water level was 12'-0" below ground surface @ 1 hr. after completion.



Notes for Shearing Resistance Curve:
 N: Indicates the number of blows required to drive the 2" φ o.d. sampler (or as noted) using a 140 lb hammer falling 30".
 S: Indicates Transverse Shearing Resistance in lbs. per sq. ft. as determined by M.D.S.H. Standard Test.
 * Indicates no sample.
 All elevations are based on City of Detroit Datum.
 Bottom of pile penetration estimated Elev. +2.0
 Min. pile penetration to Elev. 50.0
 Borings were taken March 5, 1933

LOG OF SOIL BORINGS

CITY OF DETROIT
 CITY ENGINEERING DIVISION - E. P. M. D.
 FOR
 MICHIGAN DEPARTMENT OF STATE HIGHWAYS AND TRANSPORTATION

12TH ST. (ROSA PARKS BLVD.)
8 LAFAYETTE ST. CROSSING CONRAIL

DESIGNED BY: McGuire
 DRAWN BY: A.G.
 TRACED BY:
 CHECKED BY:

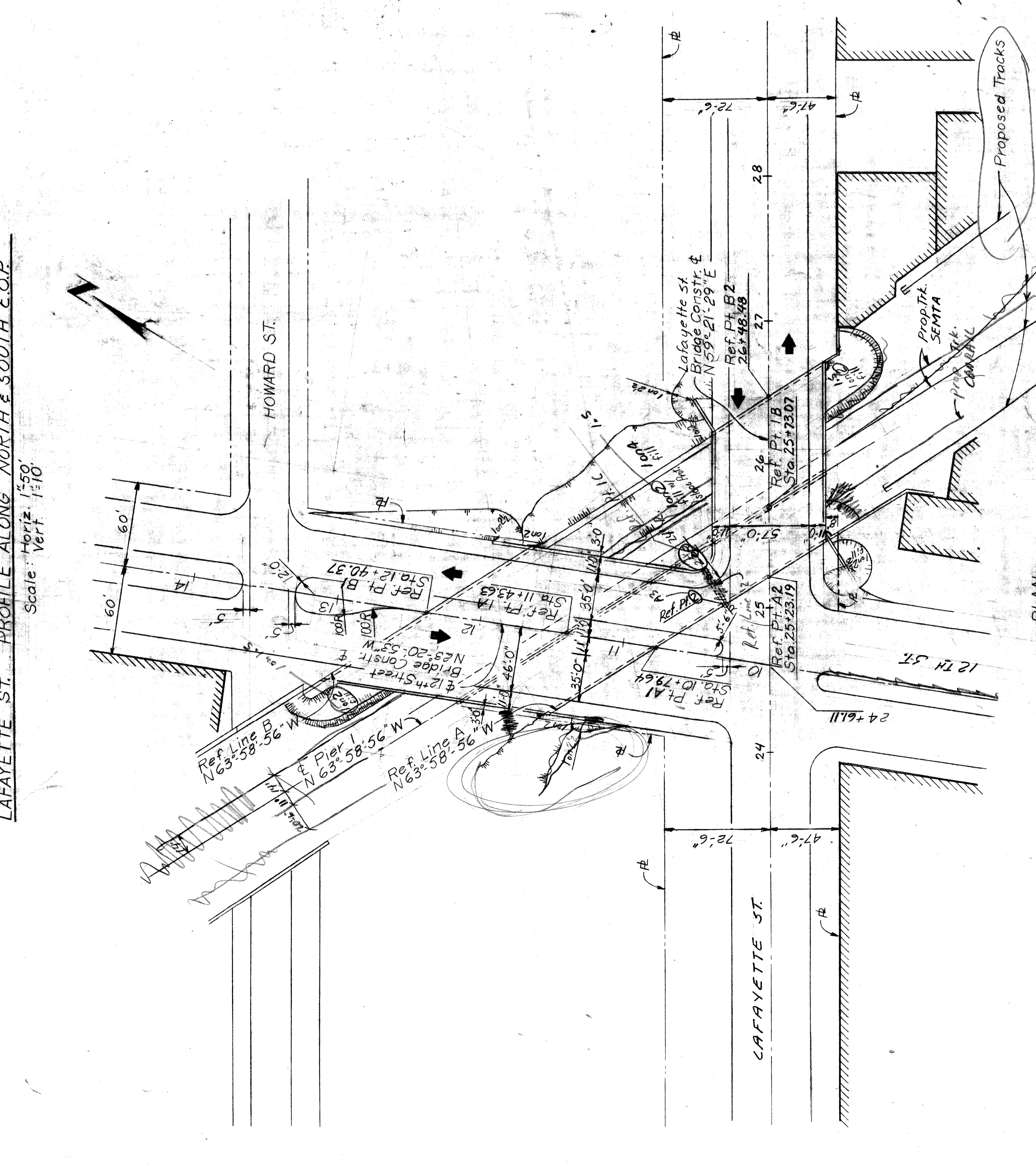
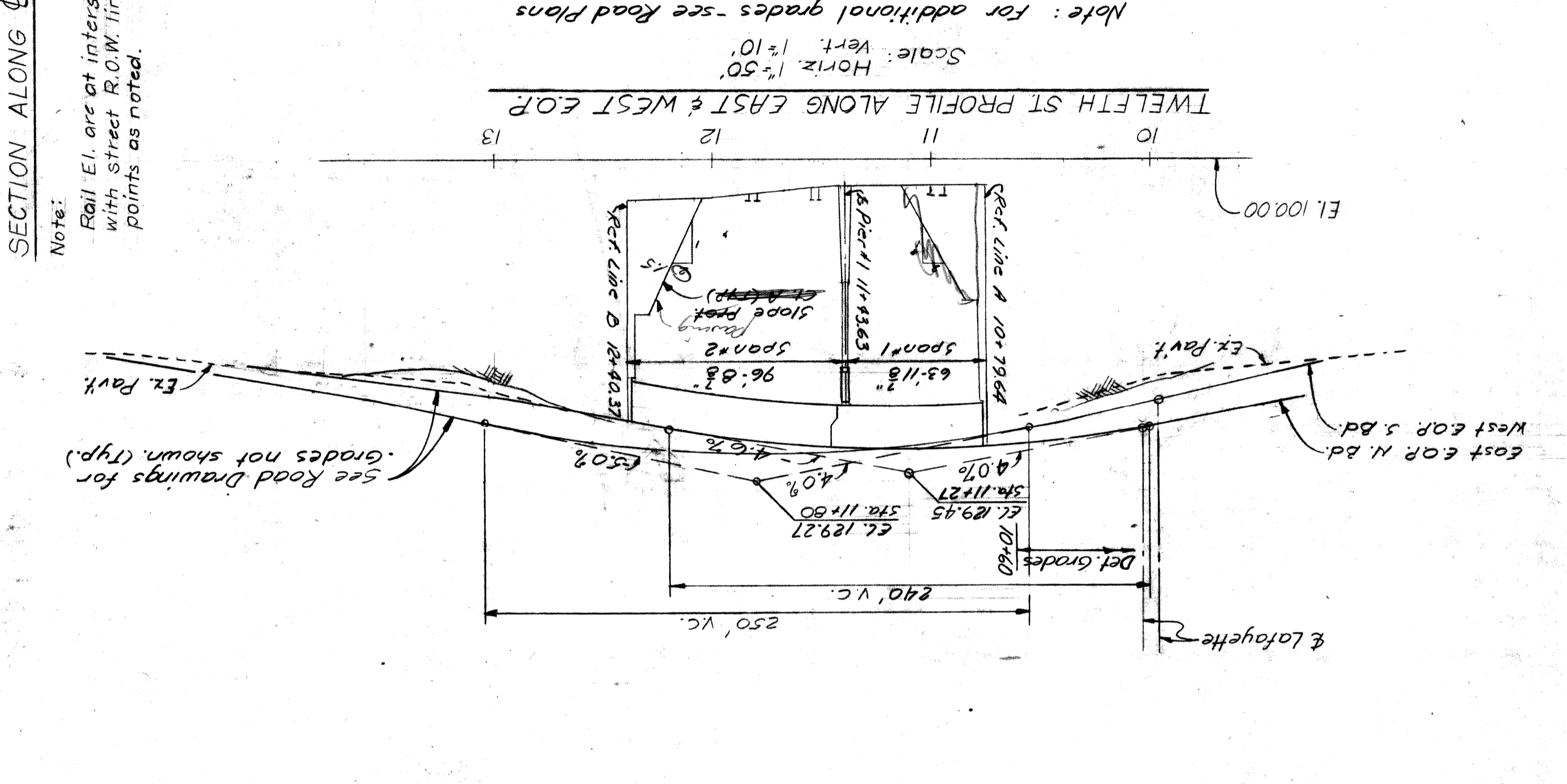
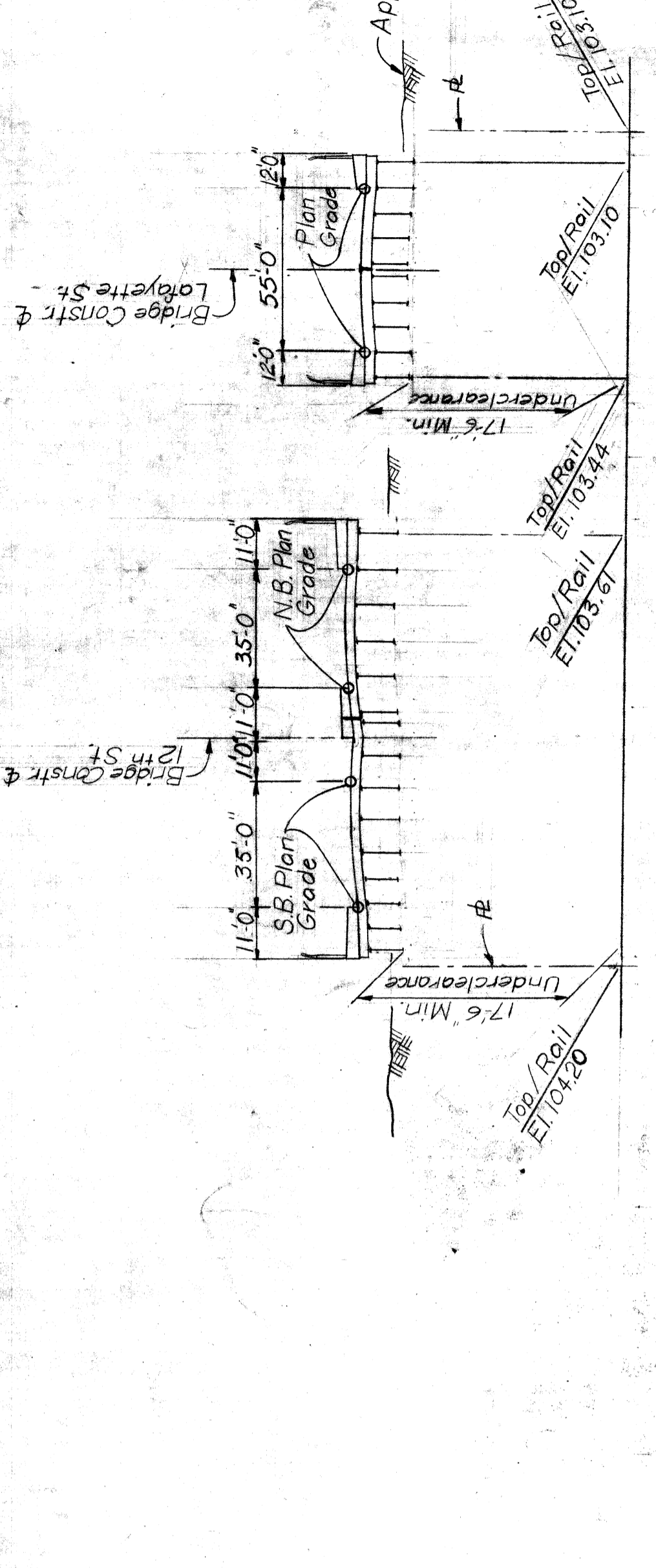
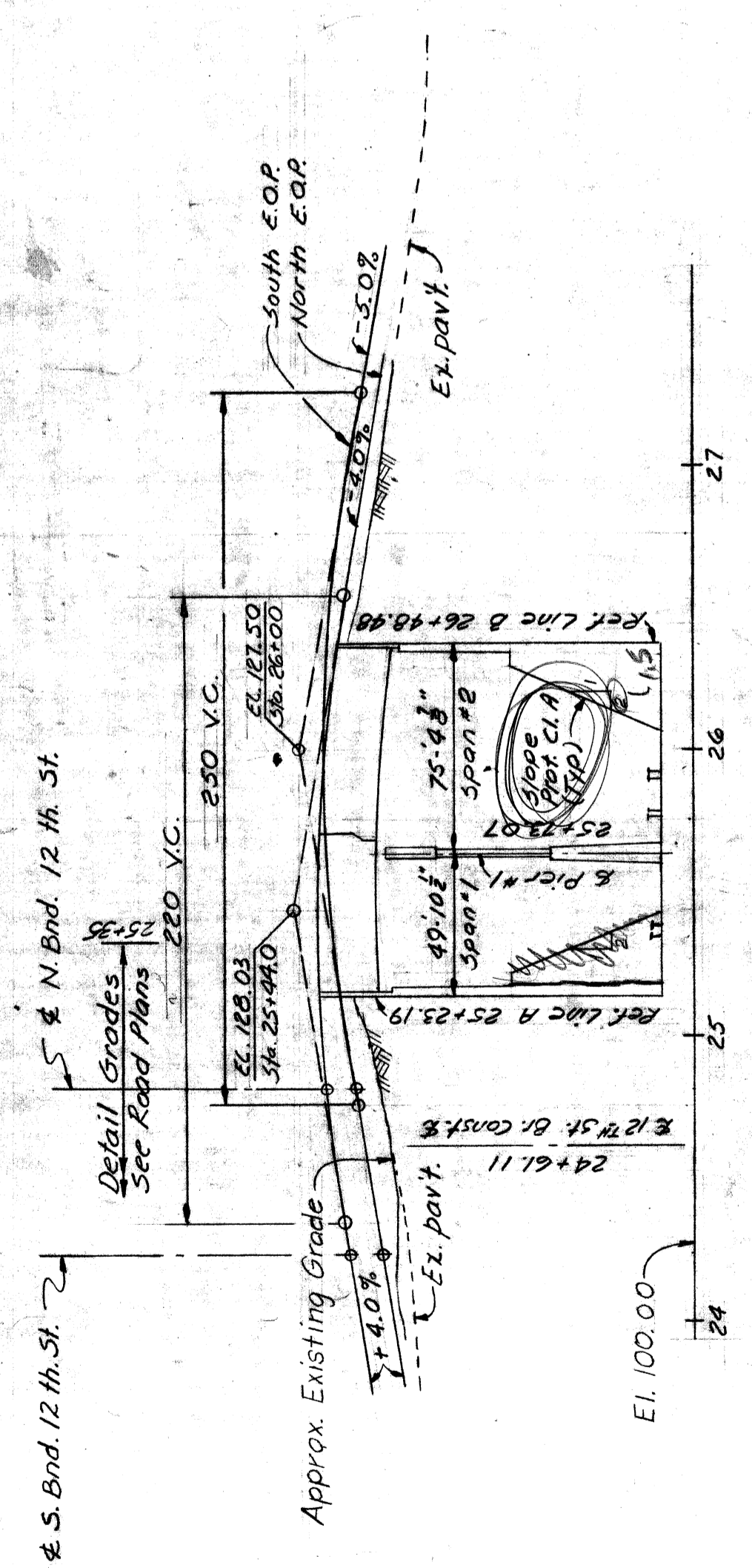
APPROVED: T.E. McLaughlin
 STRUCT. ENGR.

REVISIONS LOCATED BY COORDINATES ON SHEET

LEGEND:
 Elevation - City of Detroit Datum
 110 -
 N: 2-3-4
 S: 3-2-4
 Transverse Shear Resistance

SHEET 2 OF 8 SHEETS
 CONTRACT NO. 77-22-113
 DRWG NO. 5102
 DATE 2-22-75

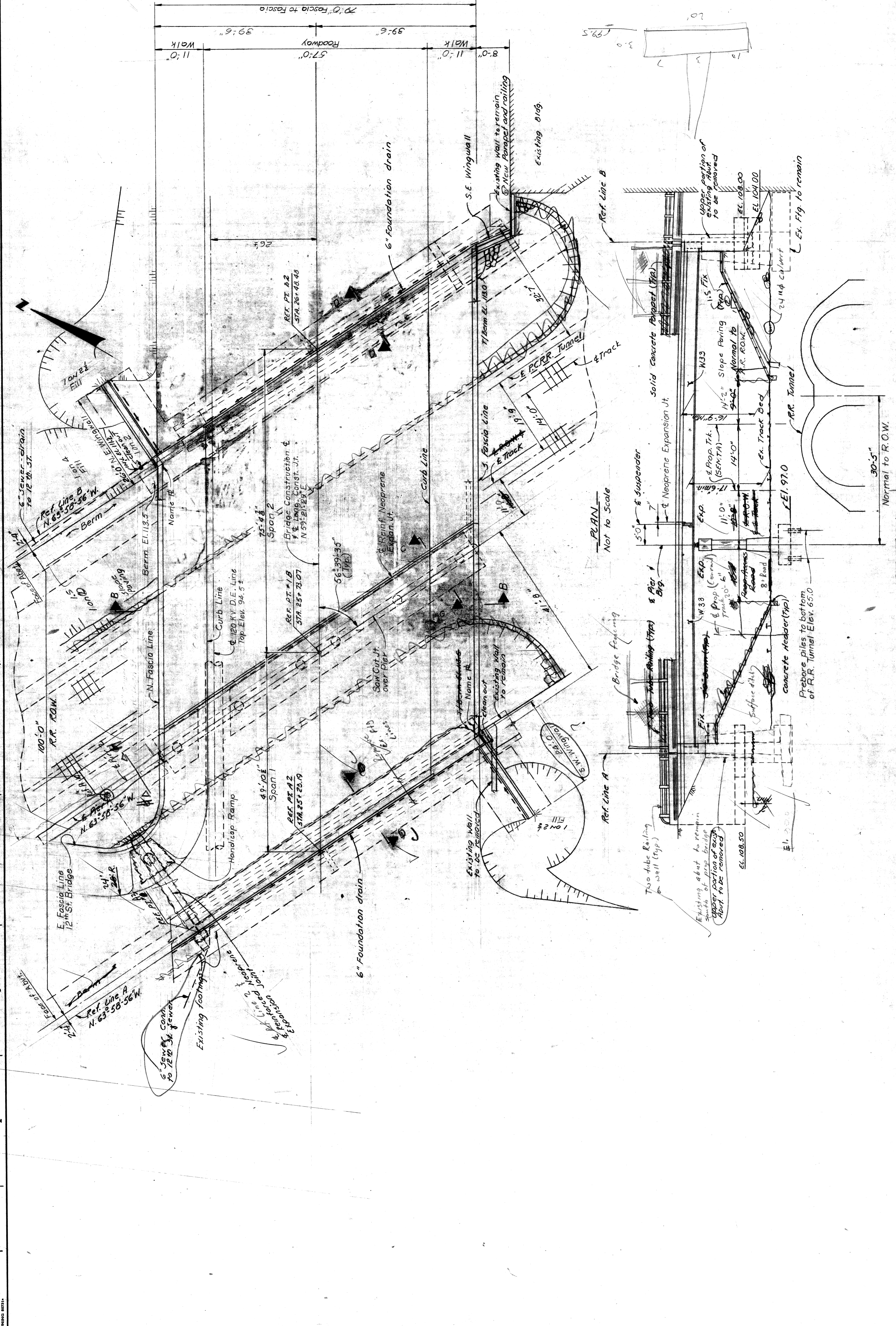
BRUNNEN 60711



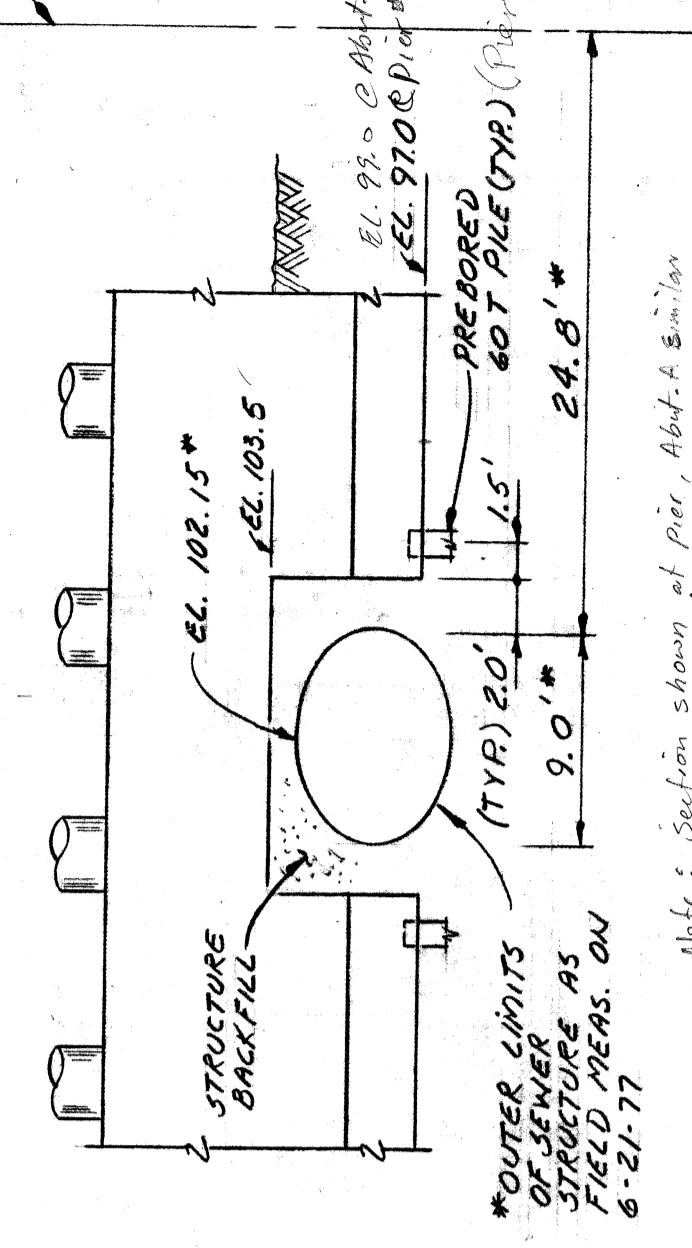
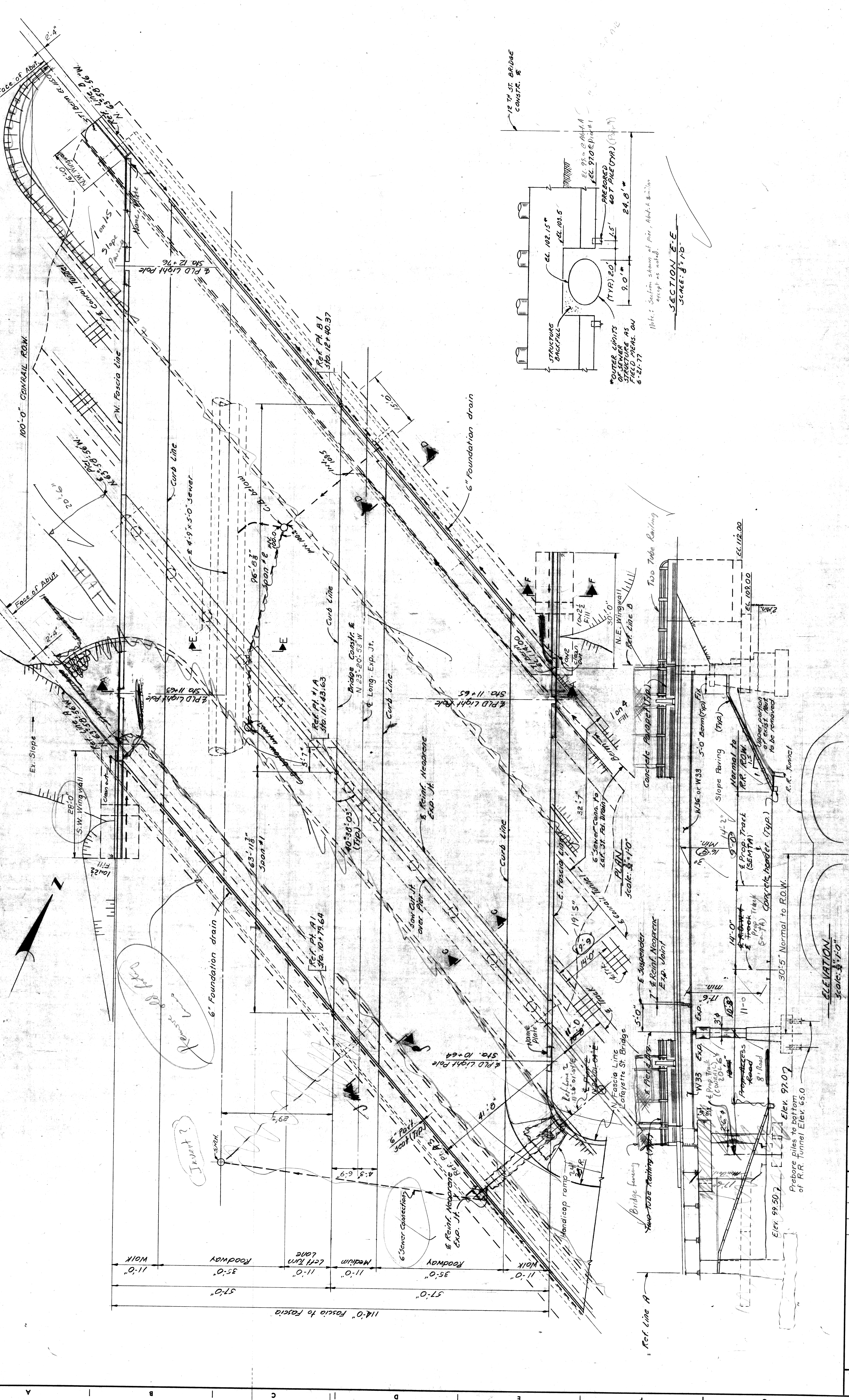
CITY OF DETROIT BENCH MARK

18-254 A 4'S of N R W Jefferson, 4'W of E R 15th El. 109.054
18-255 A 4'S of N R Howard, 4'W of E R 16th El. 111.299
28-950 6'S of S R Fort, 5'W of E R Tenth El. 113.13

SHEET 3 OF 8 SHEETS		
CONTRACT NO. 77-22-13		
DRWG NO. 5103		
DATE 2-22-78		
GENERAL DRAWING		
12TH ST. (ROSA PARKS BLVD.) & LAFAYETTE ST. CROSSING CONRAIL		
CITY OF DETROIT		
CITY ENGINEERING DIVISION - E. P. M. D.		
FOR		
MICHIGAN DEPARTMENT OF STATE HIGHWAYS AND TRANSPORTATION		
DESIGNED BY	McGuire	APPROVED
DRAWN BY	L.G.	T. E. M. G. G. G. G.
TRACED BY		STRUCT. ENGR.
CHECKED BY		CITY ENGINEER
DESCRIPTION		
REVISIONS LOCATED BY COORDINATES ON SHEET		



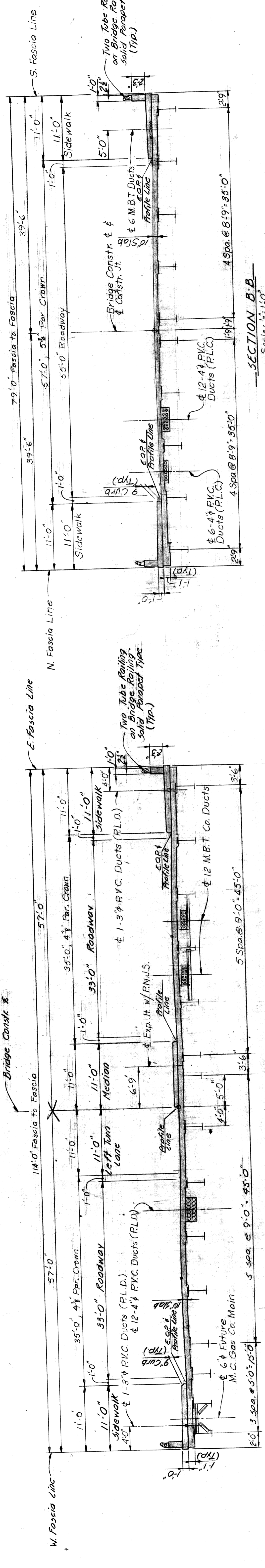
SHEET 4 OF 8 SHEETS		CONTRACT NO. 77-22-13		DRWG NO. 5104		DATE 2-22-78	
CITY OF DETROIT				12TH ST. (ROSA PARKS BLVD.)			
CITY ENGINEERS DIV. C.P.F.M.D.				8 LAFAYETTE ST. CROSSING CONRAIL			
FOR				GENERAL PLAN OF STRUCTURE - LAFAYETTE BLVD.			
MICHIGAN DEPARTMENT OF STATE HIGHWAYS & TRANSPORTATION							
DESIGNED BY	Mc Guire	APPROVED	T.E.M. Gannon				
DRAWN BY	A.G.	STRUCT. ENGR.					
TRACED BY							
CHECKED BY							
REVISIONS LOCATED BY COORDINATES ON SHEET	NO.	DATE	DESCRIPTION				



Note: Section shown of pier, Abut. 4 similar except as noted.

SECTION E-E
SCALE: 3/8" = 1'-0"

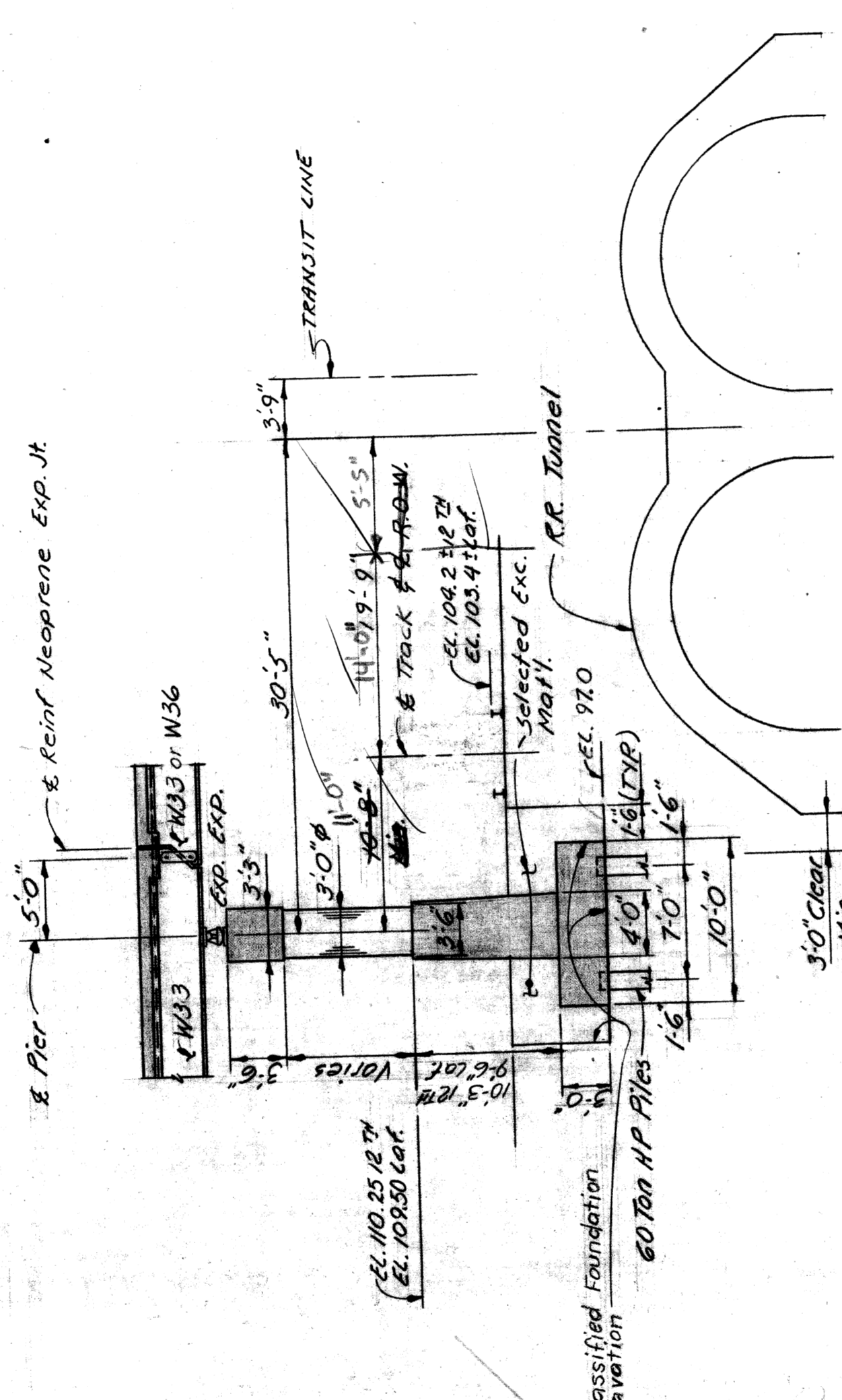
SHEET 5 OF 8 SHEETS CONTRACT NO. 77-22-13 DRWG NO. 5105 DATE 2-22-76	
CITY OF DETROIT CITY ENGINEERS DIV. C&TMD FOR MICHIGAN DEPARTMENT OF STATE HIGHWAYS & TRANSPORTATION	
APPROVED: T. E. Mc Guire STREET ENGR.	CITY ENGINEER
DESIGNED BY: Mc Guire DRAWN BY: A. G. TRACED BY: CHECKED BY:	CITY ENGINEER
REFERENCE DRAWINGS: 1. 11-11-64 2. 11-11-64 3. 11-11-64 4. 11-11-64 5. 11-11-64 6. 11-11-64 7. 11-11-64 8. 11-11-64 9. 11-11-64 10. 11-11-64 11. 11-11-64 12. 11-11-64 13. 11-11-64 14. 11-11-64 15. 11-11-64 16. 11-11-64 17. 11-11-64 18. 11-11-64 19. 11-11-64 20. 11-11-64 21. 11-11-64 22. 11-11-64 23. 11-11-64 24. 11-11-64 25. 11-11-64 26. 11-11-64 27. 11-11-64 28. 11-11-64 29. 11-11-64 30. 11-11-64 31. 11-11-64 32. 11-11-64 33. 11-11-64 34. 11-11-64 35. 11-11-64 36. 11-11-64 37. 11-11-64 38. 11-11-64 39. 11-11-64 40. 11-11-64 41. 11-11-64 42. 11-11-64 43. 11-11-64 44. 11-11-64 45. 11-11-64 46. 11-11-64 47. 11-11-64 48. 11-11-64 49. 11-11-64 50. 11-11-64 51. 11-11-64 52. 11-11-64 53. 11-11-64 54. 11-11-64 55. 11-11-64 56. 11-11-64 57. 11-11-64 58. 11-11-64 59. 11-11-64 60. 11-11-64 61. 11-11-64 62. 11-11-64 63. 11-11-64 64. 11-11-64 65. 11-11-64 66. 11-11-64 67. 11-11-64 68. 11-11-64 69. 11-11-64 70. 11-11-64 71. 11-11-64 72. 11-11-64 73. 11-11-64 74. 11-11-64 75. 11-11-64 76. 11-11-64 77. 11-11-64 78. 11-11-64 79. 11-11-64 80. 11-11-64 81. 11-11-64 82. 11-11-64 83. 11-11-64 84. 11-11-64 85. 11-11-64 86. 11-11-64 87. 11-11-64 88. 11-11-64 89. 11-11-64 90. 11-11-64 91. 11-11-64 92. 11-11-64 93. 11-11-64 94. 11-11-64 95. 11-11-64 96. 11-11-64 97. 11-11-64 98. 11-11-64 99. 11-11-64 100. 11-11-64	DESCRIPTION REVISIONS LOCATED BY COORDINATES ON SHEET



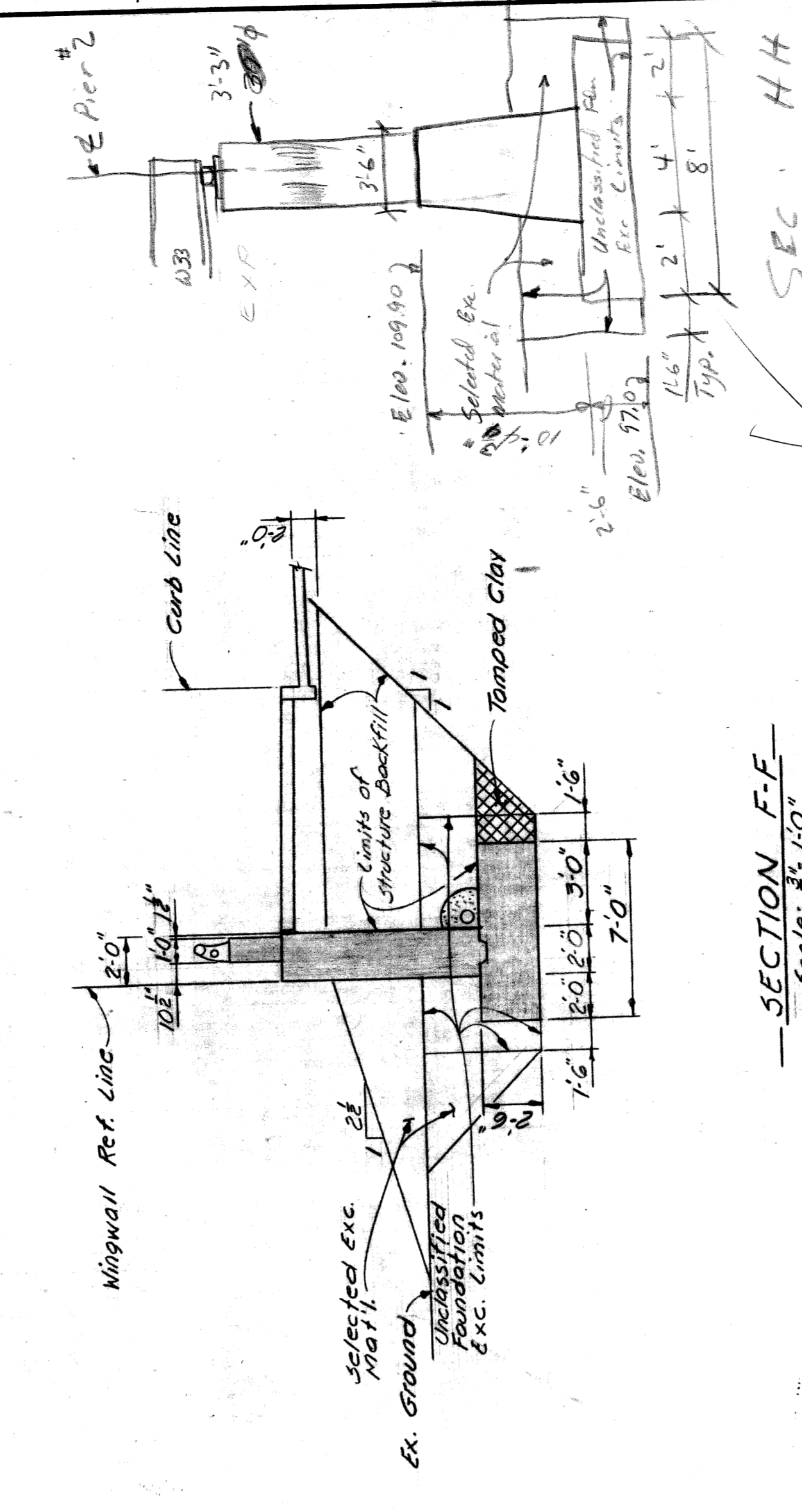
SECTION A-A
Scale: 1/4" = 1'-0"
TWELFTH ST.
(ROSA PARKS BLVD.)

SECTION B-B
Scale: 1/4" = 1'-0"
LAFAYETTE ST.

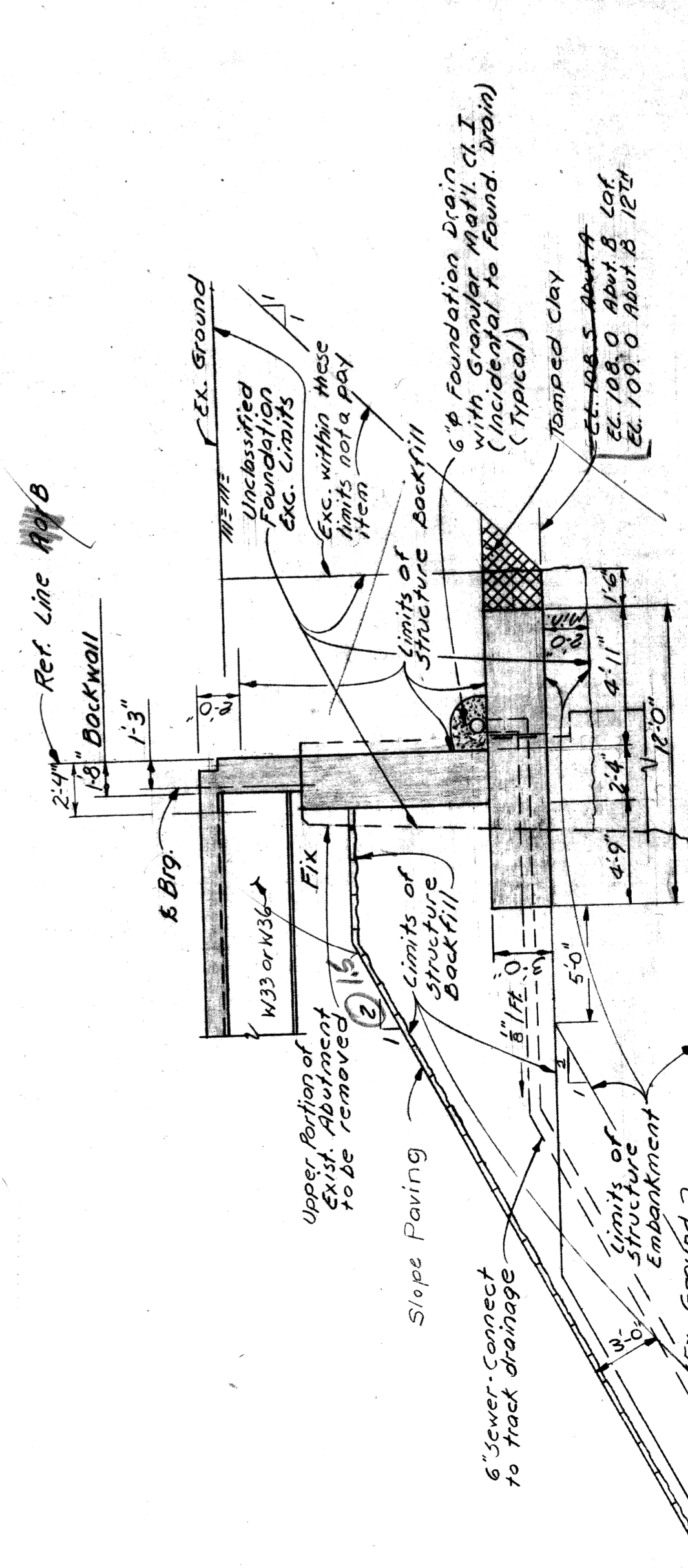
SECTION C-C
Scale: 1/4" = 1'-0"



SECTION C-C
Scale: 1/4" = 1'-0"



SECTION F-F
Scale: 1/4" = 1'-0"



SECTION D-D
Scale: 1/4" = 1'-0"

ITEM	MISCELLANEOUS QUANTITIES		TOTAL
	Unit	Lump Sum	
Removal of Portions of Structures	C.Y.		
Embankment (C.I.P.)	C.Y.		
Structure Embankment (C.I.P.)	C.Y.		
Unclassified Foundation Excavation	C.Y.		
Permanent Steel Sheet Piling	S.F.		
Temporary Steel Sheet Piling	S.F.		
6 in. Class Sewer (R.D.H.)	L.F.		
Slope Paving	S.Y.		
Slope Protection Headers	L.F.		

The line separating 12th St. and Lafayette St. quantities is Pier 2 extended.

GENERAL NOTES:
The design of this structure is based on current AASHTO Standard Specifications for Highway Bridges (H 20-44 loading) and the M.D.S.H. Specifications for the Design of Highway Bridges - 1958 Edition. Live load plus impact deflection: 1/1000 of span length and 1/150 of cantilever arm.

Slope Paving shall be either "Precast Concrete" or "Grouted Flagstone" as specified in the M.D.S.H. & T. Std. Specifications 6.01. For Details see Standard Drawing SP-2.
E.O.P. denotes Edge of Pavement Grade.
Tamped Clay and Selected Excavated Material are incidental to Unclassified Foundation Excavation.
Structure Embankment limits shall extend to 5' outside the toe at all abutment and wingwall footings and slope along on a 1 on 2 slope to existing ground. All other fill under slope protection shall be Structure Backfill.
Trackwork to be by Consolidated Rail Corp. & Access road, and surface drainage ditch by E.O.P. denotes Edge of Pavement Grade.
Except where otherwise indicated on these Plans or in the Proposal and Supplemental Specifications contained herein, all materials and workmanship shall be in accordance with the Michigan Dept. of State Highways and Transportation Standard Specifications for Highway Construction, 1976 Edition.

APPROVED: **T. E. M. Quinn**
STRUCT. ENGR.

DESIGNED BY: **MaGuire**
DRAWN BY: **A.G.**
TRACED BY:

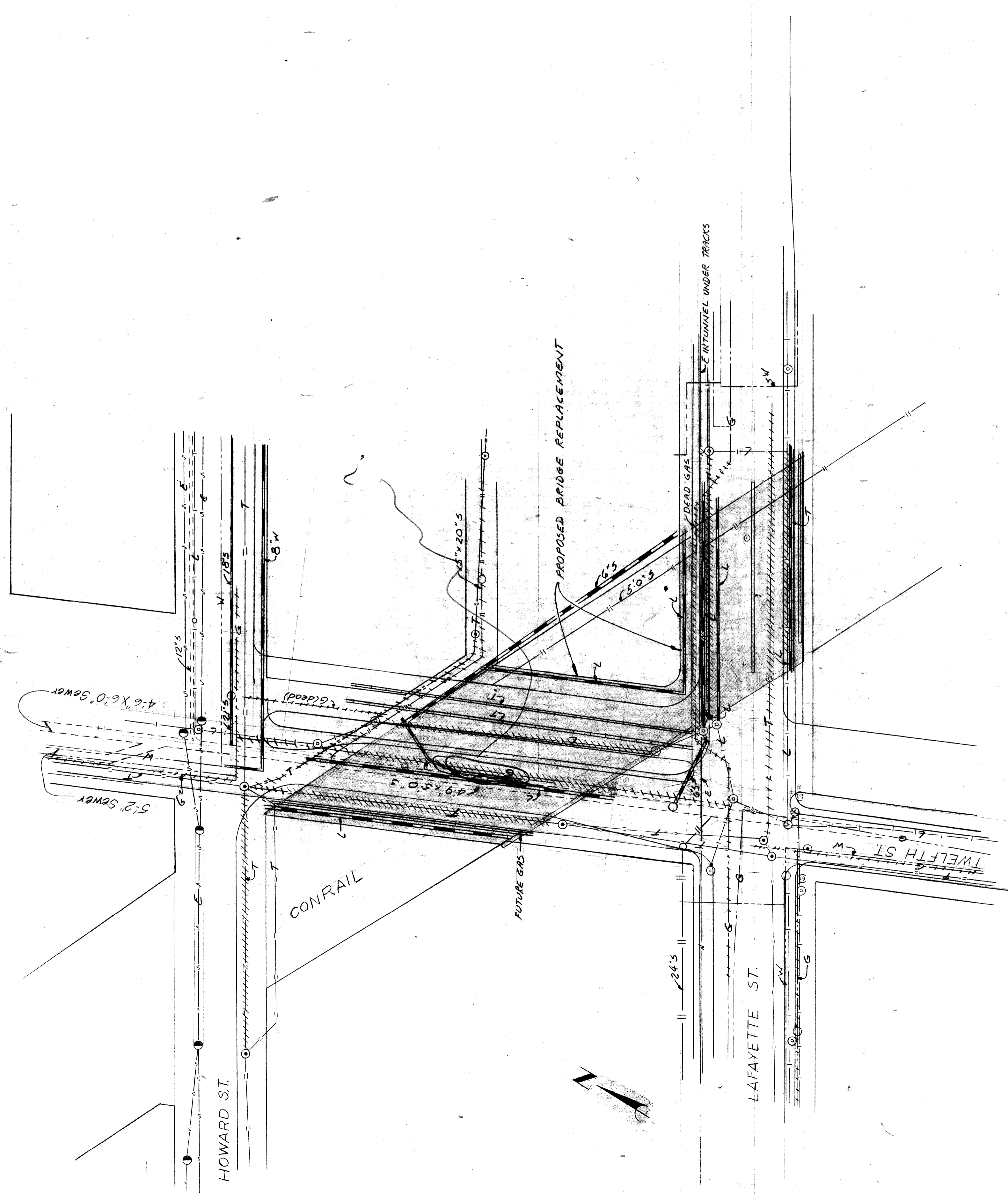
CITY OF DETROIT
CITY ENGINEERS DIV. EP&MD
FOR
MICHIGAN DEPT. OF STATE HIGHWAYS & TRANS.

12TH ST. (ROSA PARKS BLVD)
& LAFAYETTE ST. CROSSING CONRAIL

GENERAL PLAN OF STRUCTURE

SHEET 6 OF 8 SHEETS
CONTRACT NO. 77-22-73
DRWG NO. S106
DATE 2-22-78

FORM NO. 302-SK 11 10 9 8 7 6 5 4 3 2 1



SITUATION PLAN
SCALE: 1"=40'

LEGEND

Utility	To Be Removed OR REASONED	Proposed by OTHERS	Proposed by CONTRACTOR
Michigan Consolidated Gas Co.	-----G-----	+++++G+++++	-----G-----
Michigan Bell Telephone Co.	-----T-----	+++++T+++++	-----T-----
Water	-----W-----	+++++W+++++	-----W-----
Sewer	-----S-----	+++++S+++++	-----S-----
Public Lighting Commission	-----L-----	+++++L+++++	-----L-----
Detroit Edison Co.	-----E-----	+++++E+++++	-----E-----

CITY OF DETROIT CITY ENGINEERING DIVISION - E. P. M. D. FOR MICHIGAN DEPARTMENT OF STATE HIGHWAYS AND TRANSPORTATION		12TH ST. (ROSA PARKS BLVD.) & LAFAYETTE ST. CROSSING CONRAIL		SHEET 7 OF 8 SHEETS CONTRACT NO. 77-22-13 DRWG NO. S107 DATE 2-22-78
APPROVED: <i>T. E. McGuire</i> STRUCT. ENGR.	DESIGNED BY McGuire	DRAWN BY L.G.	EXISTING UTILITIES AND PROPOSED ALTERATIONS	
REVISIONS LOCATED BY COORDINATES ON SHEET	TRACED BY	CHECKED BY		