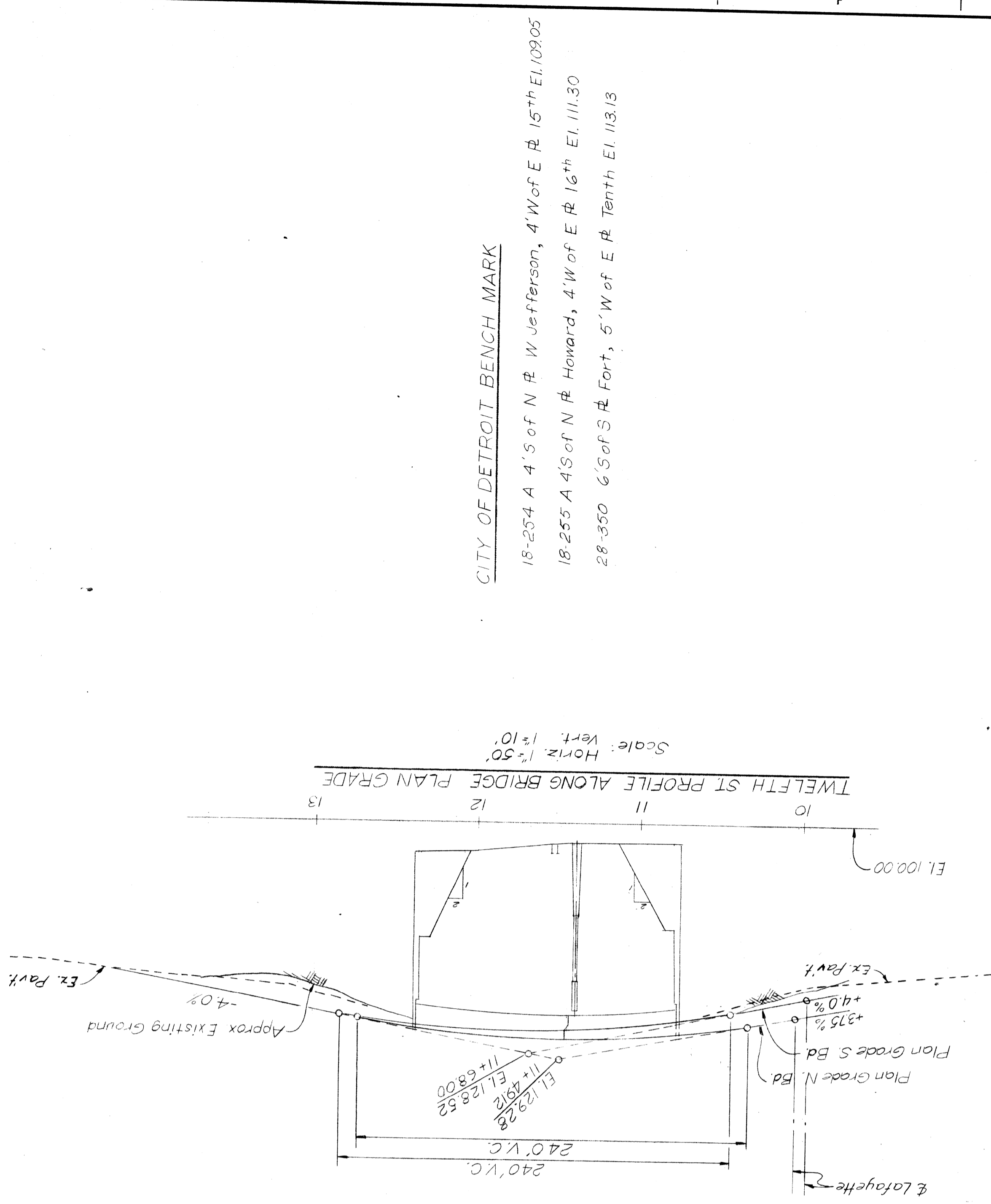
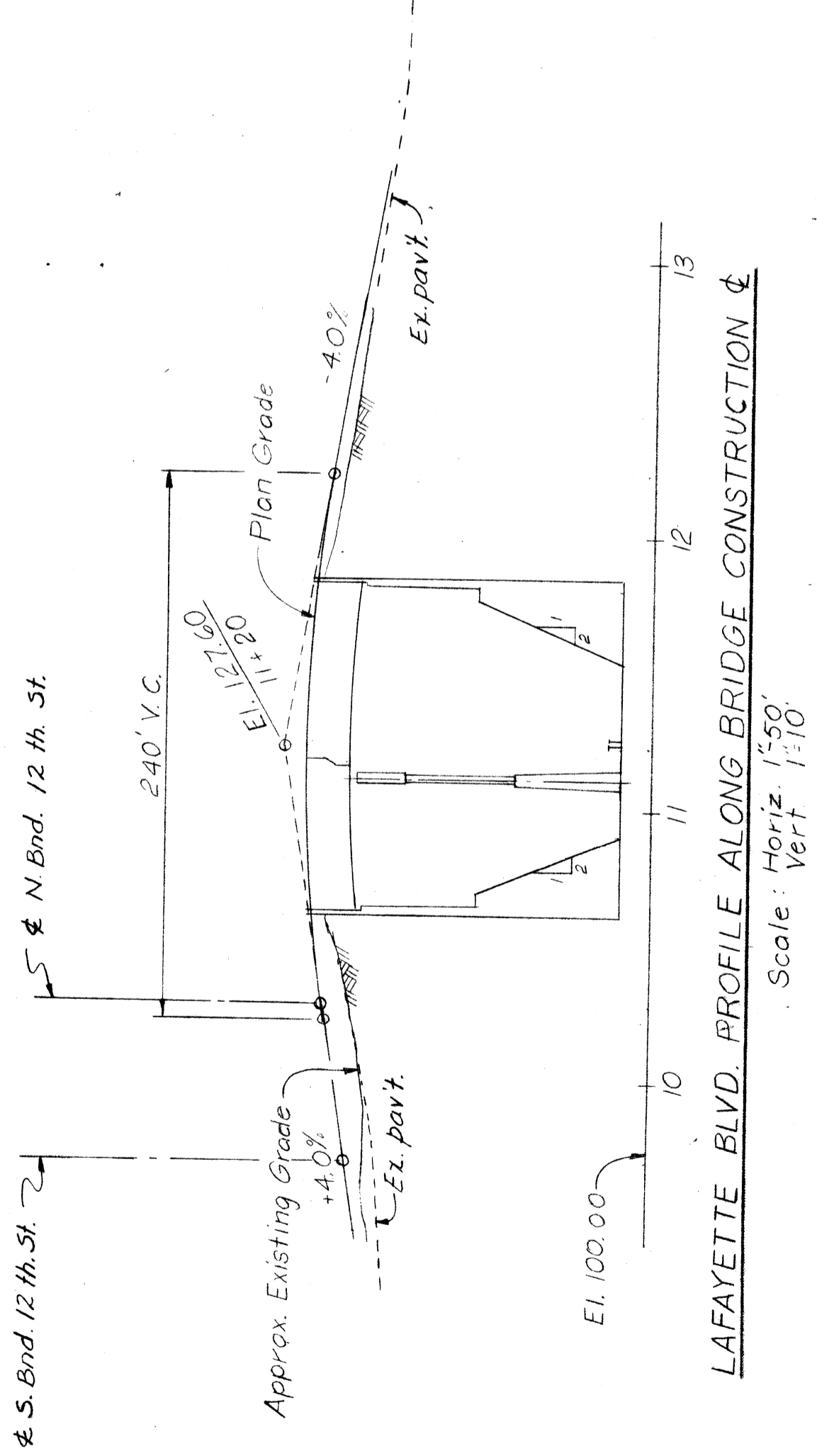


SECTION ALONG PENN CENTRAL R.R. R.O.W.

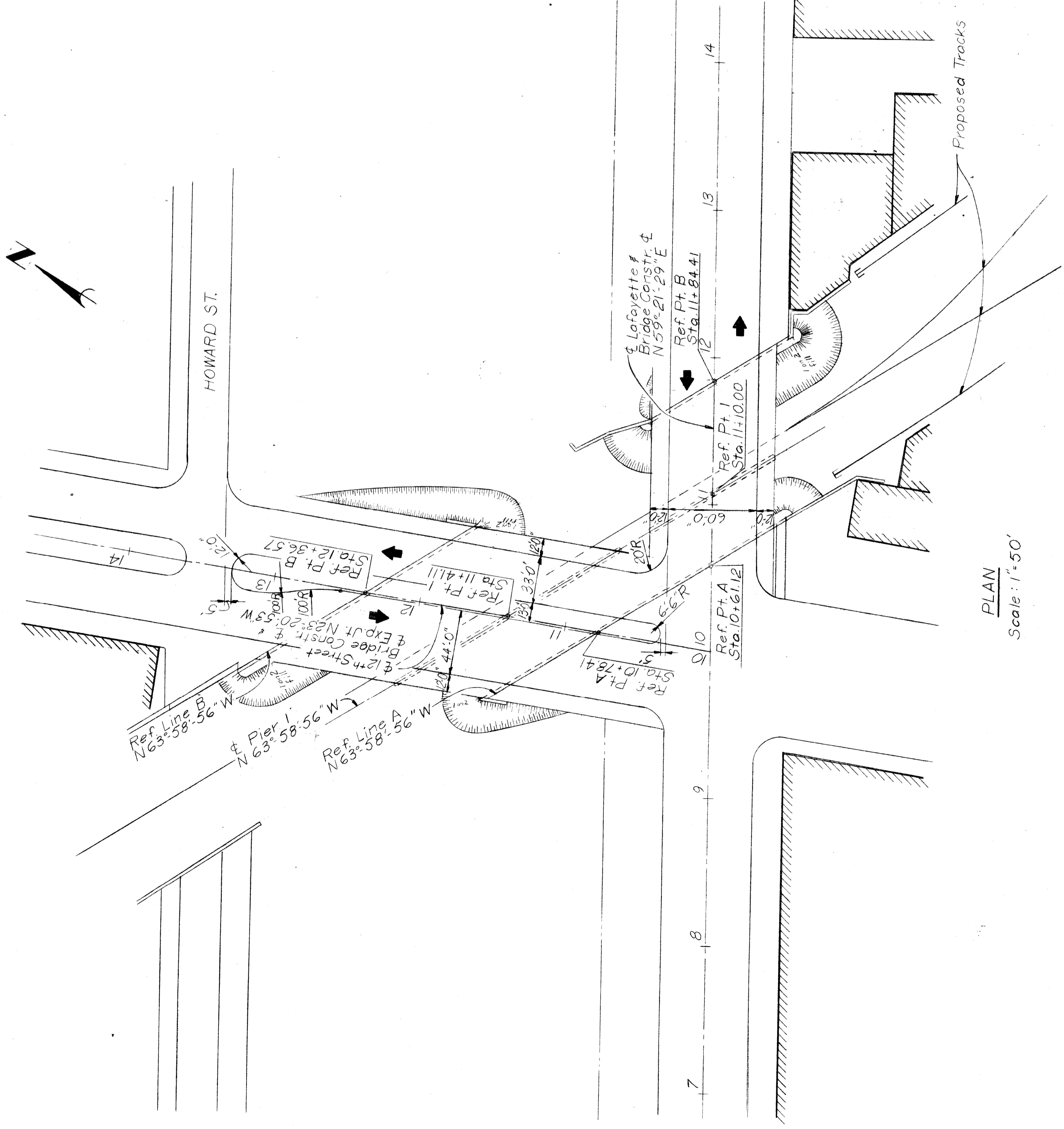


CITY OF DETROIT BENCH MARK

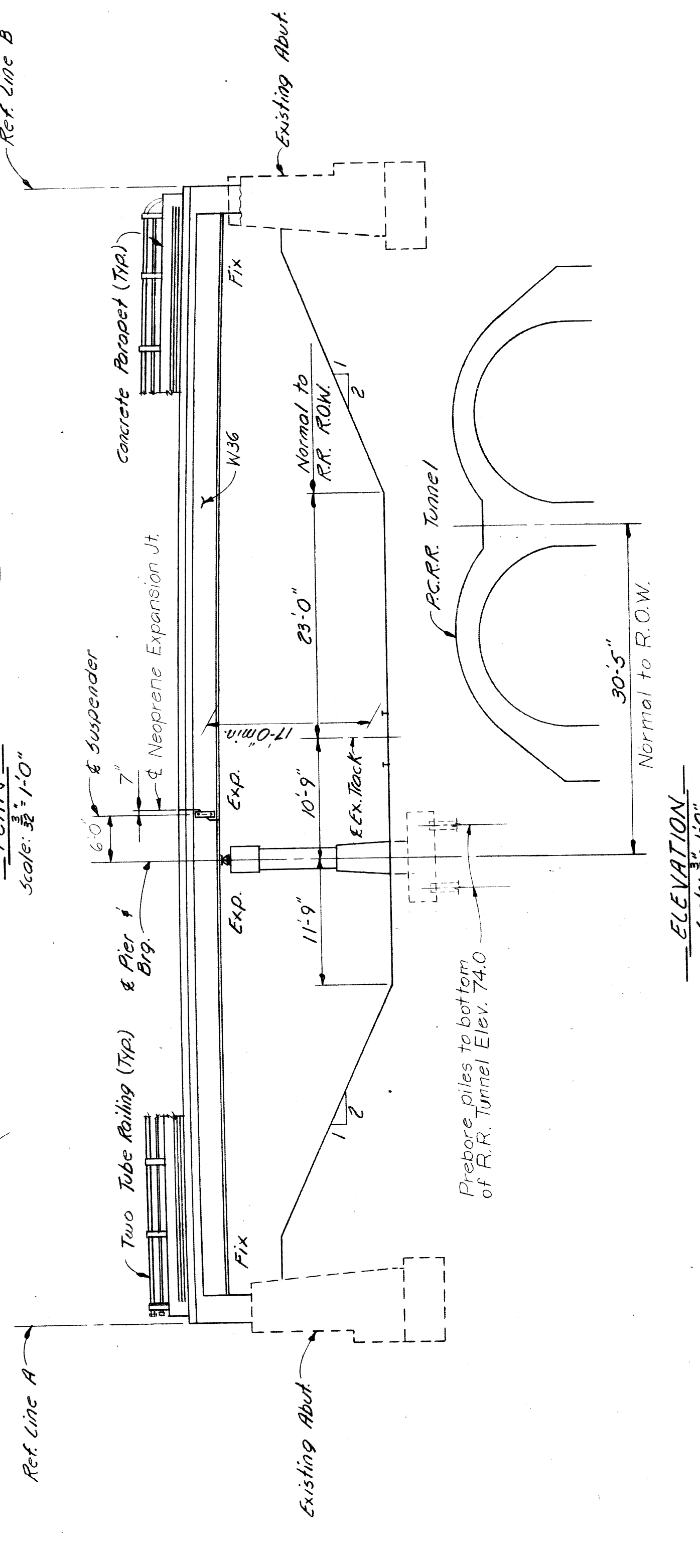
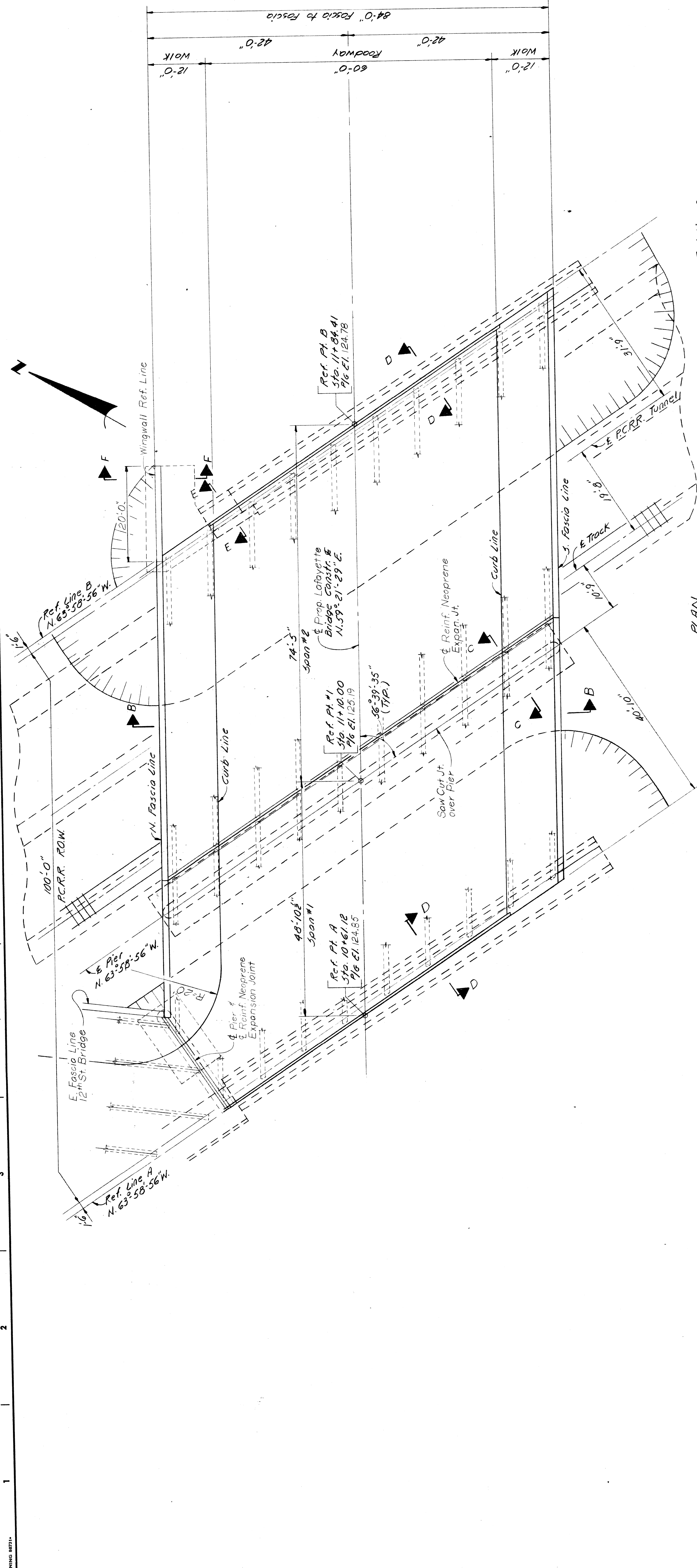
- 18-254 A 4' S of N & W Jefferson, 4' W of E R. 15<sup>th</sup> El. 109.05
- 18-255 A 4' S of N & Howard, 4' W of E R. 16<sup>th</sup> El. 111.30
- 28-350 6' S of S R. Fort, 5' W of E R. Tenth El. 113.13



LAFAYETTE BLVD. PROFILE ALONG BRIDGE CONSTRUCTION

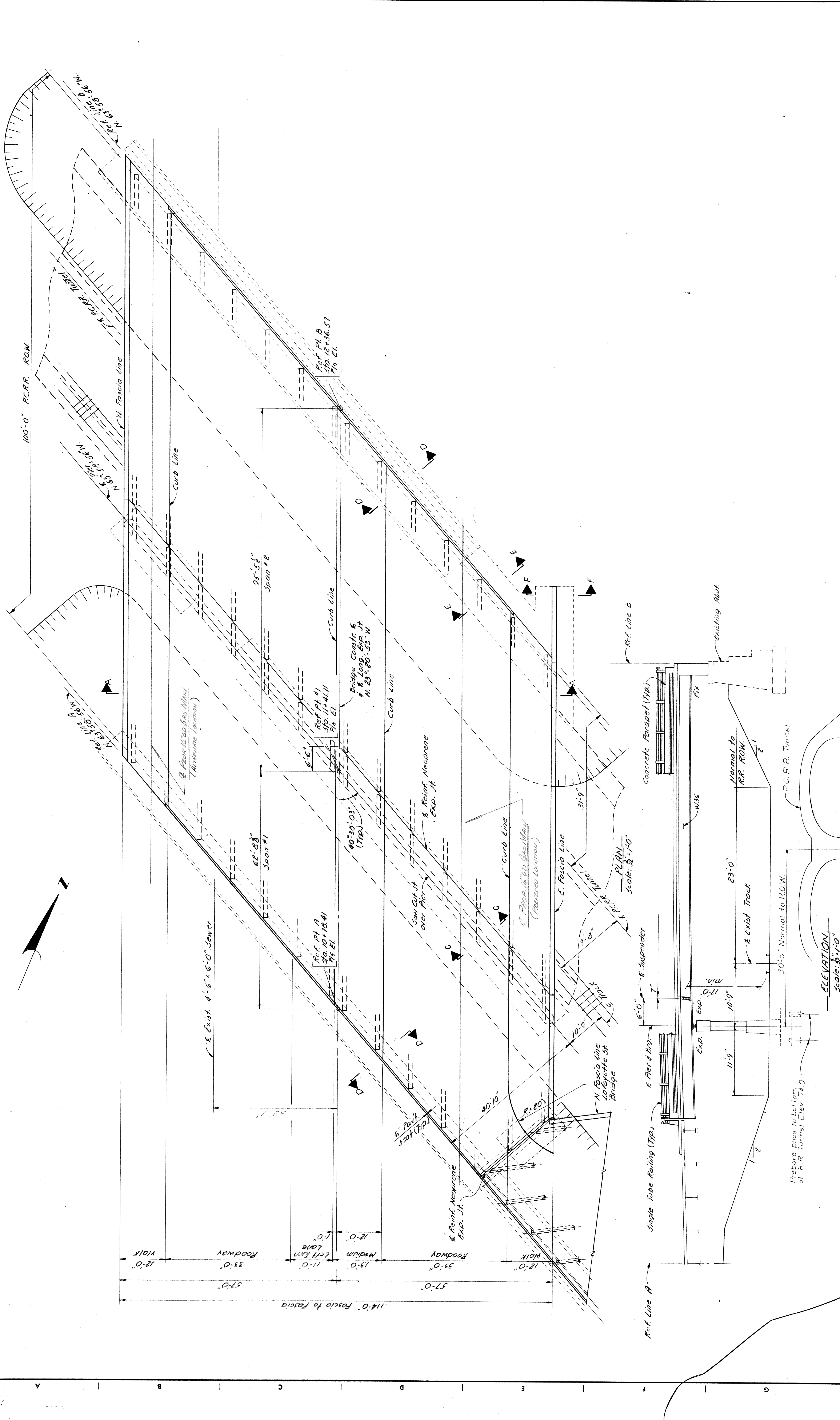


CITY OF DETROIT DEPARTMENT OF PUBLIC WORKS CITY ENGINEERS OFFICE FOR COMMUNITY DEVELOPMENT COMMISSION		WEST SIDE INDUSTRIAL REHABILITATION PROJECT NO. 2 12 TH ST. & LAFAYETTE BLVD. BRIDGES CROSSING THE P.C.R.R.		SHEET 3 OF 2 SHEETS CONTRACT NO. AO 1676 BFD DRWG No. S/103 DATE 5-73
APPROVED: T. E. M. GAVRAN STRUCT. ENGR.	DESIGNED BY McGuire	DRAWN BY L.G.	GENERAL DRAWING	
REVISIONS LOCATED BY COORDINATES ON SHEET	TRACED BY	CHECKED BY	CITY ENGINEER	

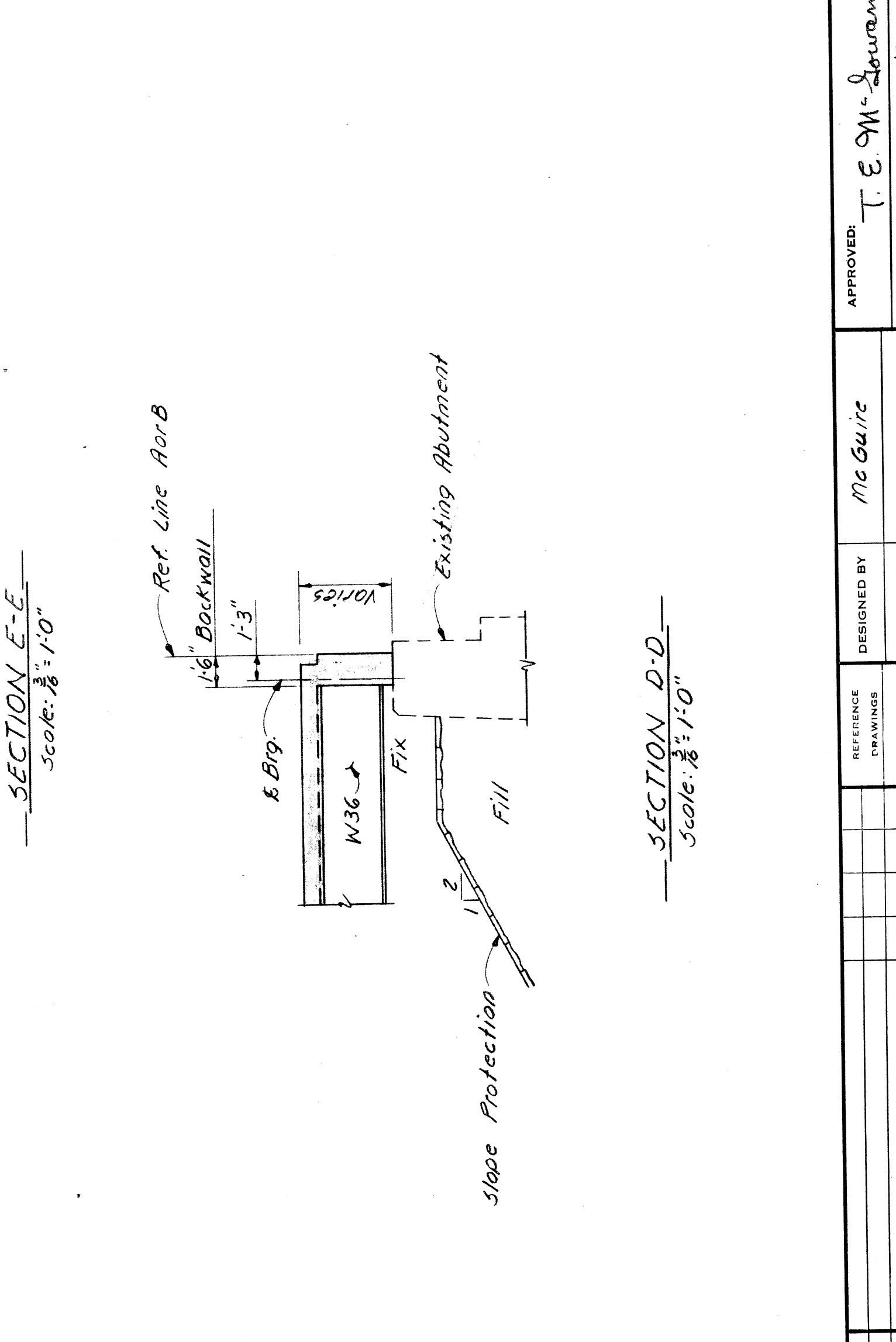
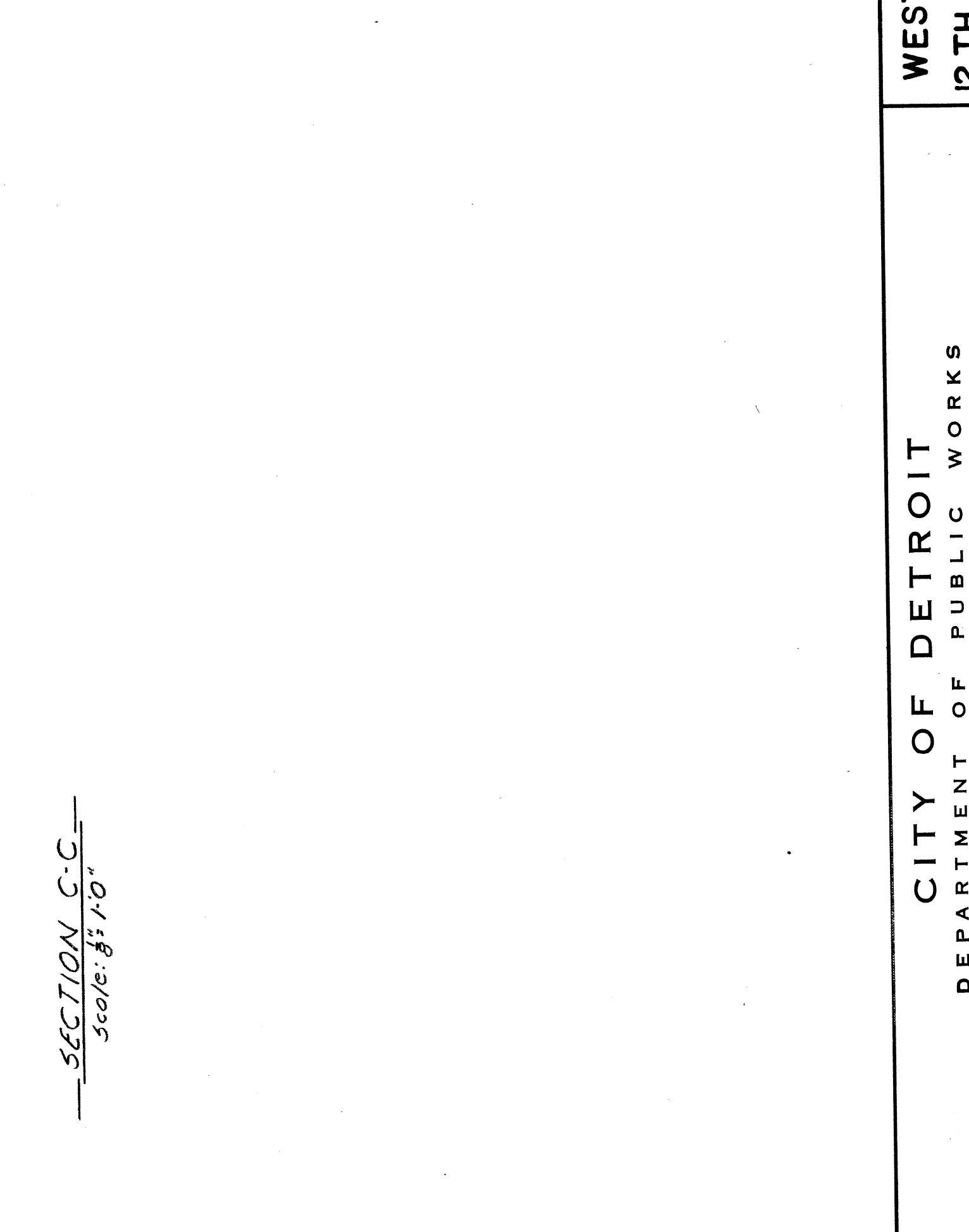
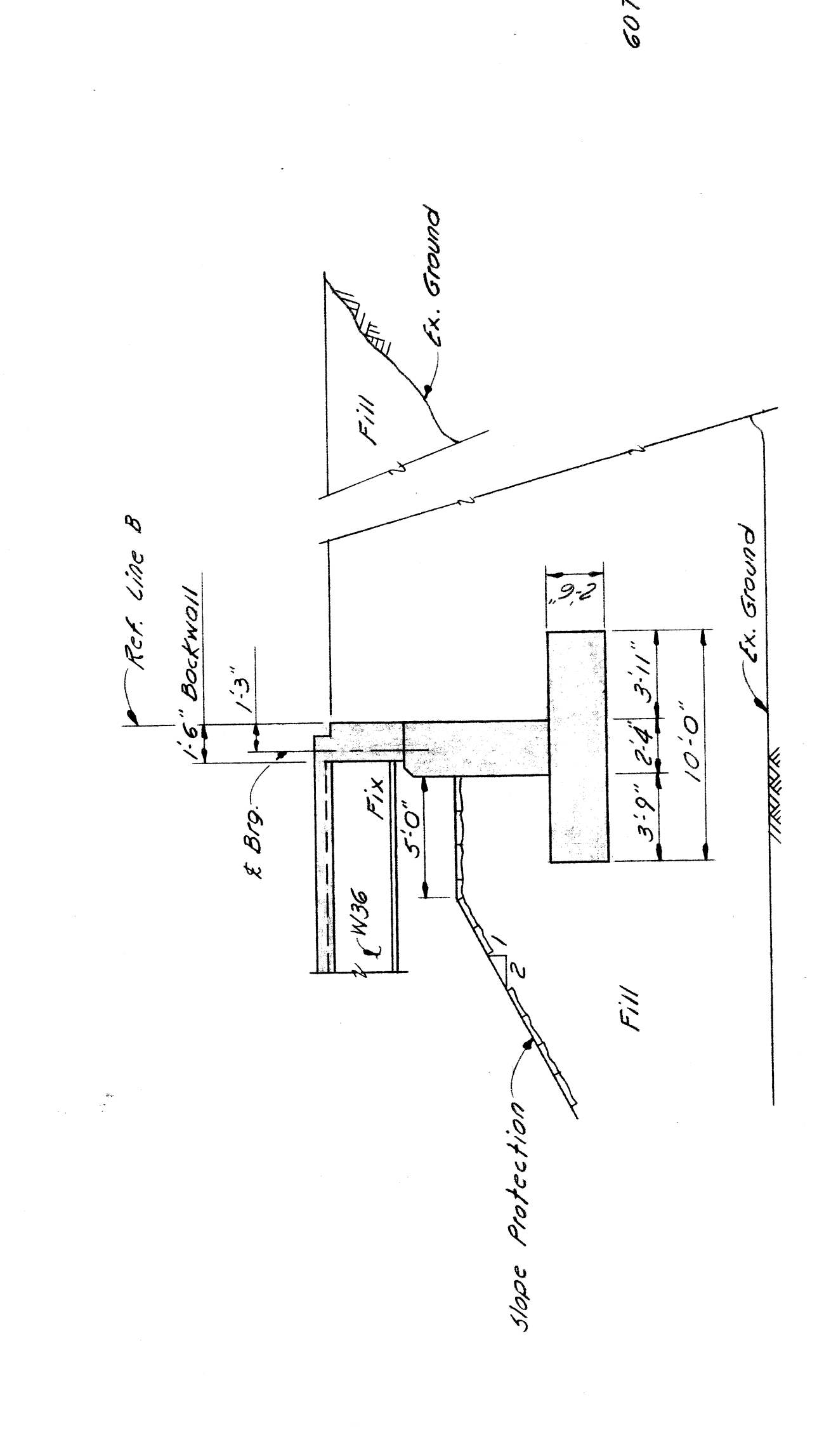
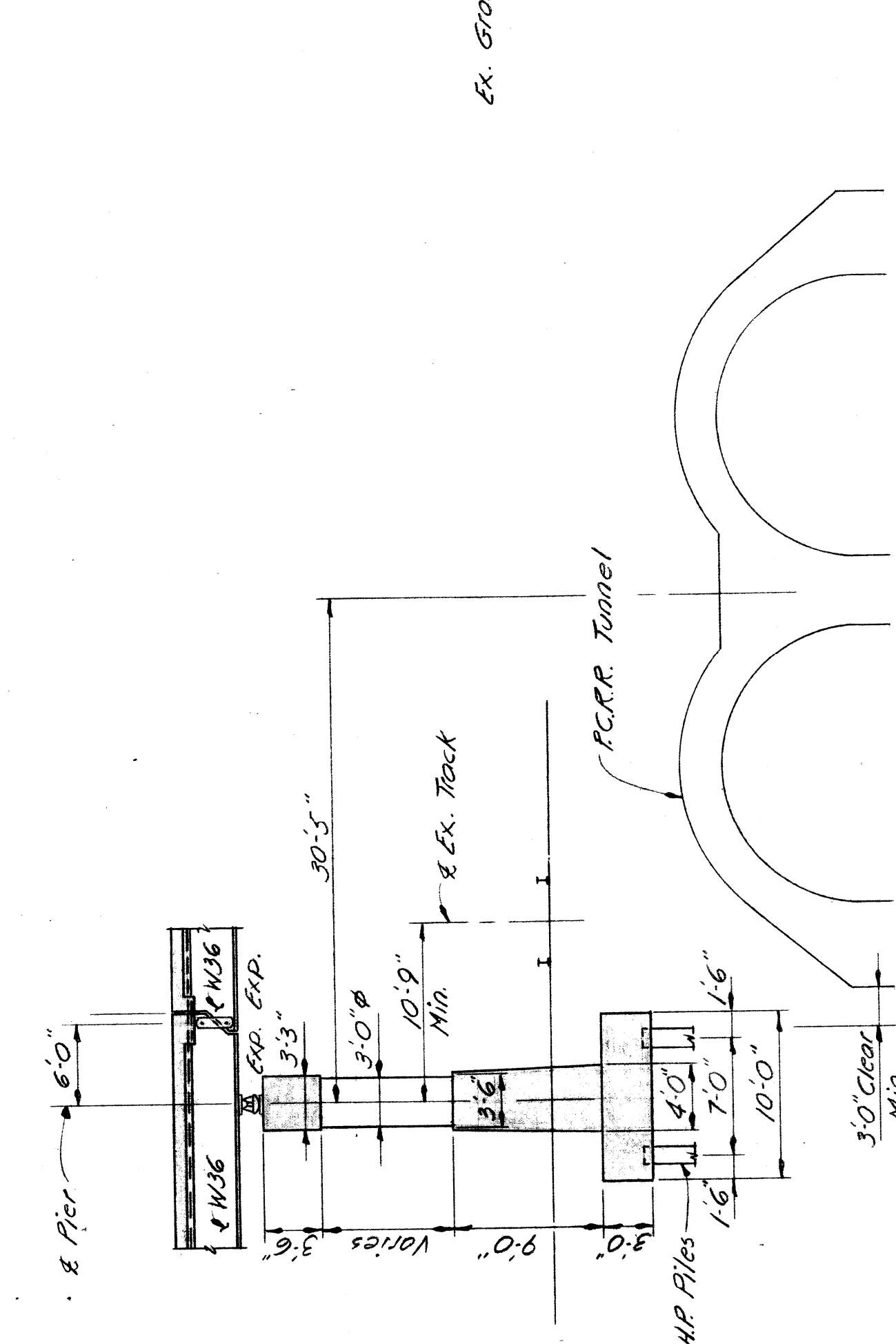
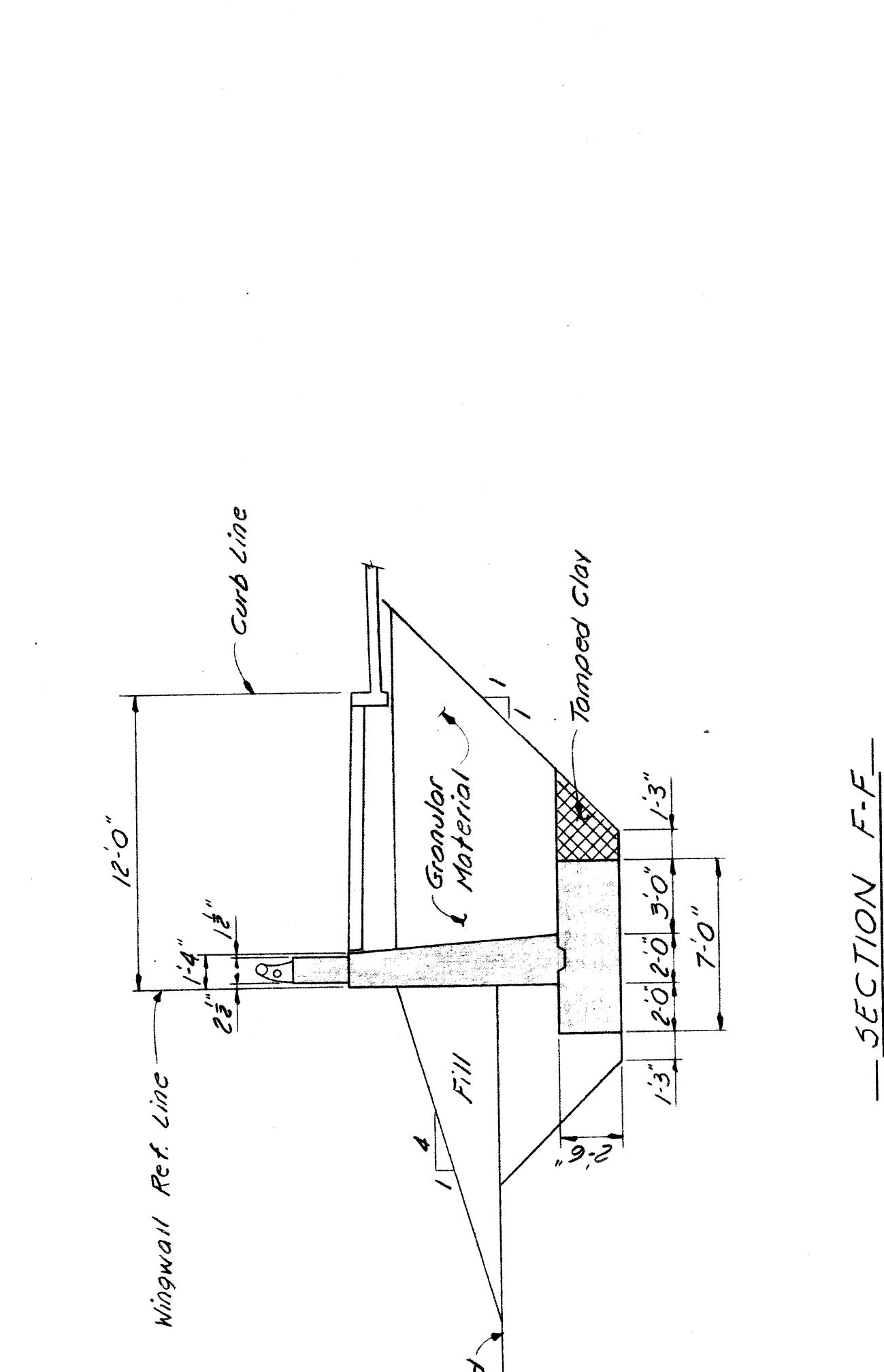
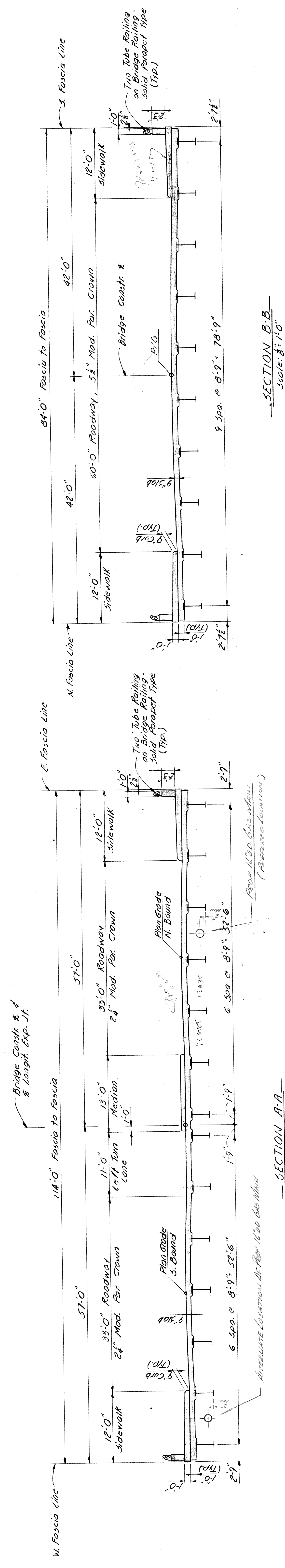


SHEET 4 OF 7 SHEETS CONTRACT A01676D DRWG NO. 5104 DATE 5-73		WEST SIDE INDUSTRIAL REHABILITATION PROJECT NO. 2 12TH ST. & LAFAYETTE BLVD. BRIDGES CROSSING THE P.C.R.R.	
CITY OF DETROIT DEPARTMENT OF PUBLIC WORKS CITY ENGINEERS OFFICE FOR COMMUNITY DEVELOPMENT COMMISSION		GENERAL PLAN OF STRUCTURE - LAFAYETTE BLVD.	
APPROVED: T. E. Mc-Gowan STRUCT. ENGR.	DESIGNED BY Mc Guire	DRAWN BY A. G.	TRACED BY CHECKED BY
REFERENCE DRAWINGS	NO.	DATE	CITY ENGINEER
REVISIONS LOCATED BY COORDINATES ON SHEET			





SHEET 5 OF 7 SHEETS CONTRACT NO. A01676 B DRWG NO. 5705 DATE 5-73	
WEST SIDE INDUSTRIAL REHABILITATION PROJECT NO. 2 12TH ST. & LAFAYETTE BLVD. BRIDGES CROSSING THE P.C.R.R. CITY ENGINEERS OFFICE	
CITY OF DETROIT DEPARTMENT OF PUBLIC WORKS CITY ENGINEERS OFFICE FOR COMMUNITY DEVELOPMENT COMMISSION	
APPROVED: T. E. Mc Guire STRUCT. ENGR.	DESIGNED BY Mc Guire
DRAWN BY A. G.	TRACED BY
CHECKED BY	CITY ENGINEER
REFERENCE DRAWINGS	DESCRIPTION REVISIONS LOCATED BY COORDINATES ON SHEET



**GENERAL NOTES:**  
 The design of this structure is based on current AASHTO Standard Specifications for Highway Bridges (HS-20-44 loading) and the M.D.S.H. Specifications for the Design of Highway Bridges - 1958 Edition. Line load plus impact deflection = 1/1000 of span length and 1/350 of cantilever arm.  
 P.G. denotes Plan grade.

SHEET 6 OF 2 SHEETS		CONTRACT NO. AO 1676B&D		DRWG NO. 5106		DATE 5-73	
WEST SIDE INDUSTRIAL REHABILITATION PROJECT NO. 2				12 TH ST. & LAFAYETTE BLVD. BRIDGES CROSSING THE P.C.R.R.			
CITY OF DETROIT				DEPARTMENT OF PUBLIC WORKS			
CITY ENGINEERS OFFICE				FOR			
COMMUNITY DEVELOPMENT COMMISSION				GENERAL PLAN OF STRUCTURE			
DESIGNED BY	McGuire	APPROVED:	T. E. M. Gorman	CITY ENGINEER			
DRAWN BY	A.G.	STRUCT. ENGR.					
TRACED BY							
CHECKED BY							
REVISIONS LOCATED BY COORDINATES ON SHEET							



