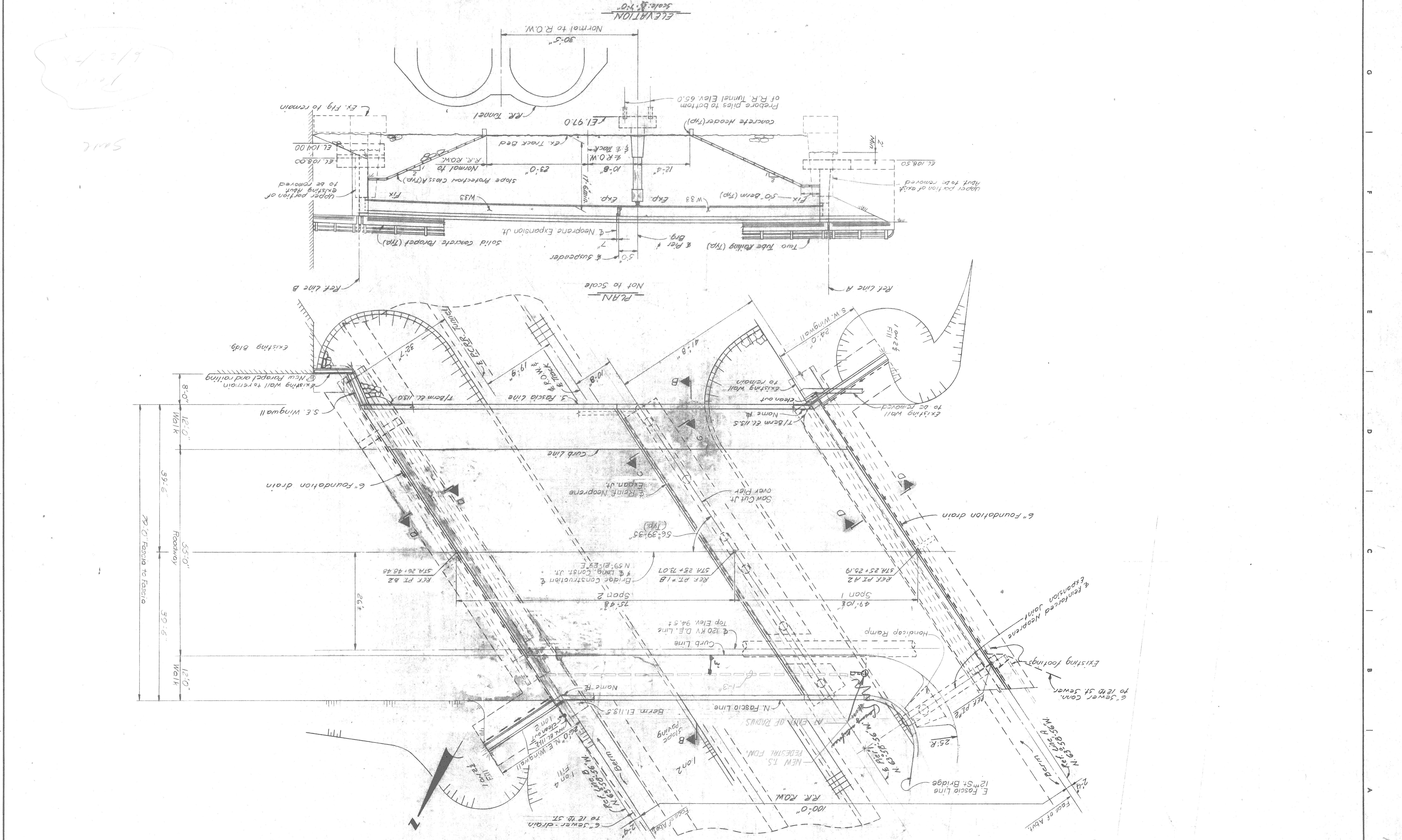


REVISIONS LOCATED BY COORDINATES ON SHEET	DESIGNED BY Mc Guire	APPROVED T.E. Mc Guire	CITY ENGINEER	MICHIGAN DEPARTMENT OF STATE HIGHWAYS & TRANSPORTATION	GENERAL PLAN OF STRUCTURE-LAFAYETTE BLVD.
DESCRIPTION	DRAWN BY A.G.	STRUC. ENGR.	CITY ENGINEERS	FOR CITY ENGINEERS DIV. C.P.M.D.	12TH ST. (ROSA PARKS BLVD.) & LAFAYETTE ST. CROSSING CONRAIL
DATE	CHECKED BY	TRACED BY	DATE	DATE	DATE
2-22-78					
DRWG NO. 5104					
CONTRACT NO. 77-22-13					
SHEET 4 OF 8 SHEETS					



6/22/78  
S.M.C.