

**WISCONSIN BRIDGE & IRON CO.**

NORTH MILWAUKEE, WIS.

CONT. NO. 9617A-

BILL NO. 301A-

FOR City of Detroit

LOCATION Detroit, Mich

DESCRIPTION Grade Separation Highway Bridge

ERECTED BY W.B. & I. Cast.

SPECIFICATIONS Cast.

RIVETS

—

OPEN HOLES — UNLESS NOTED

—

REAMING

—

SHOP PAINT Lead Red Lead

FIELD PAINT

—

INSPECTION BY

—

MADE BY Pampel

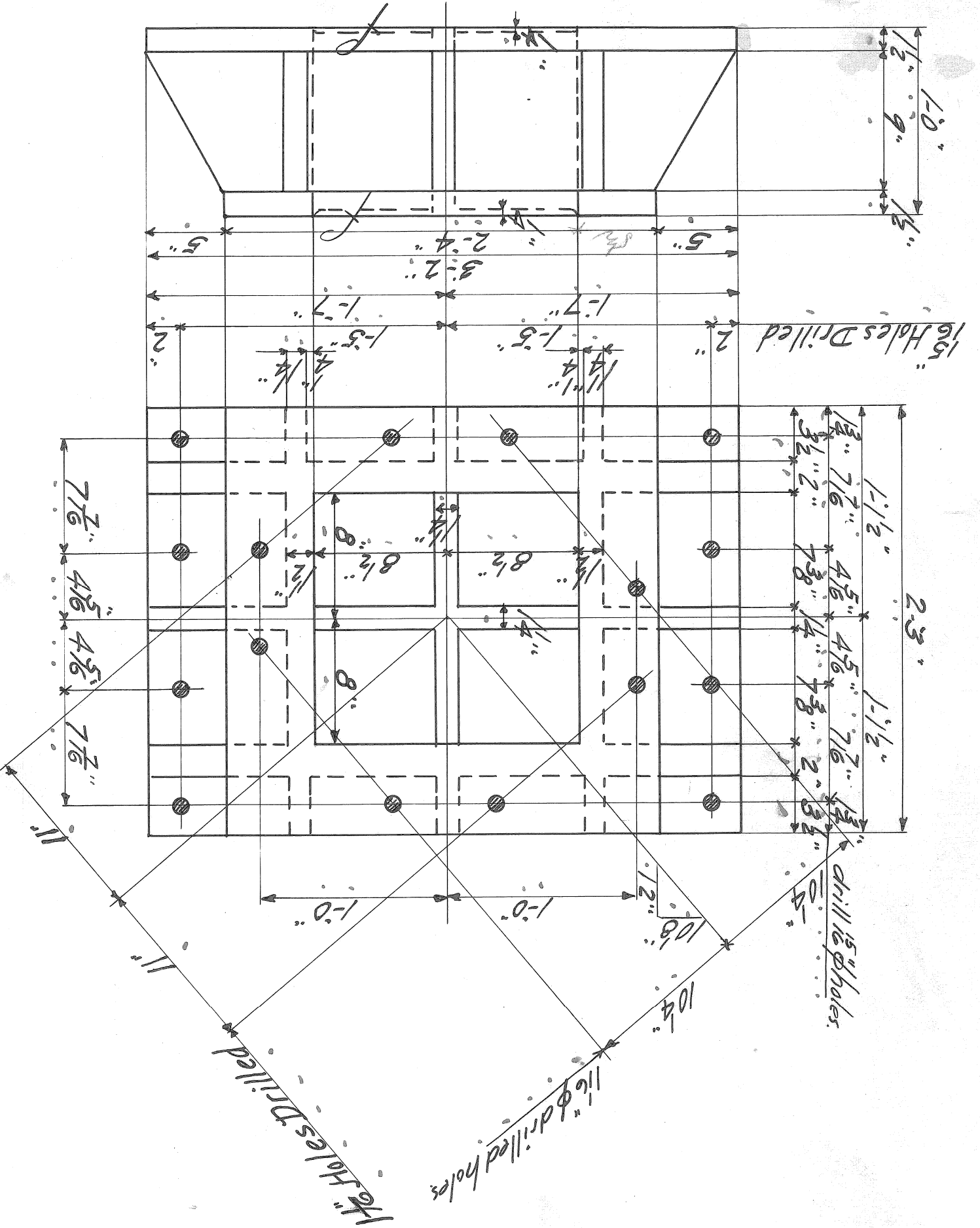
DATE 6-8-22

TRACED BY E.R.M.

DATE 6-10-22

CHECKED BY CW

DATE



1-CASTING-2001-  
Cast Steel.