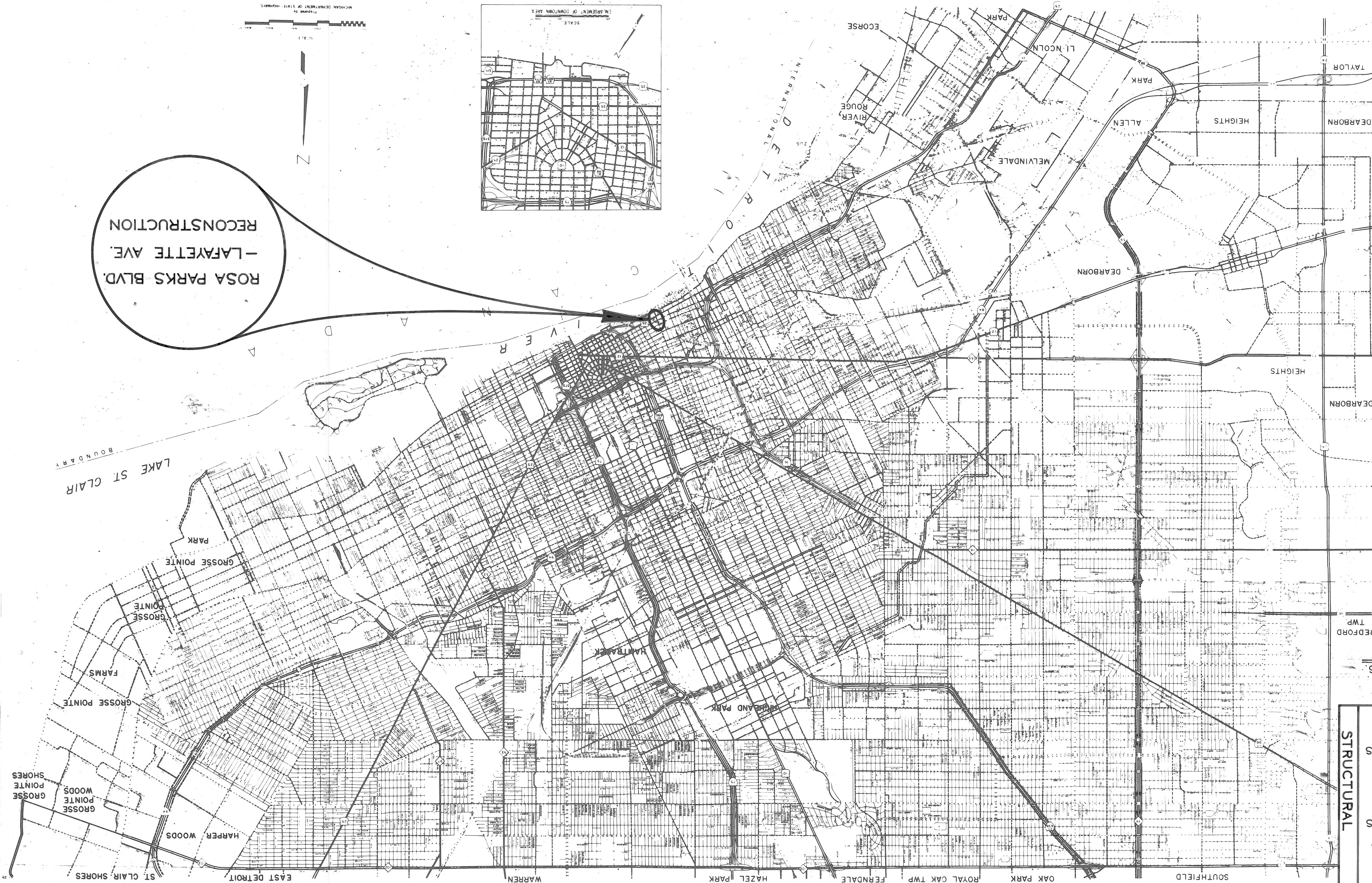


INDEX OF SHEETS

ROADWAY	R1-2	TYPICAL CROSS-SECTIONS ALIGNMENT
	R-3	CONSTRUCTION SEQUENCE REMOVALS
	R-4-5	HOWARD ST SIDEWALK CONSTR. PLAN
	R-8	PROFILE
	R9-10	DETAILED GRADES UTILITIES
	R14	SPECIAL DETAILS LANDSCAPE PLAN
	R16	FIRE HYDRANTS STANDARD PLANS & DETAILS
	R17-18	QUANTITY SHEET
	WS1-3	SEWER & WATER ALTERATIONS
	R22	ELECTRICAL QUANTITY SHEETS
ELECTRICAL	E30	GENERAL PLAN OF SITE LOG OF SOIL BORINGS
	S102	GENERAL PLAN OF STRUCTURE
	S103	EXISTING & PROPOSED UTILITIES STAGING DRAWING
	S107	PIER PLAN
	S119-122	STRUCTURAL STEEL DETAILS SUPERSTRUCTURE DETAILS
	S127-138	SCREED DETAILS
	S145	BRIDGE NAME PLATE DETAILS
STRUCTURAL	S146	BRIDGE QUANTITY SHEET
	S148	REF. DRWGS.-EX BRIDGE STRU.
	II-52D	II-29C
	II-396	II-40D
	II-41D	II-43C
	II-44D	II-45C
	VI-100A	VI-124C
	VI-125E	

MDOT STANDARD REFERENCE DRWGS.

CITY OF DETROIT  
 IN CO-OPERATION WITH  
 MICHIGAN DEPARTMENT OF TRANSPORTATION  
 AND  
 FEDERAL HIGHWAY ADMINISTRATION  
 PLAN AND PROFILE OF PROPOSED  
 FEDERAL BRIDGE REPLACEMENT PROJECT NO. BRM 2000 (196)  
 CONTROL SECTION BRM 82400  
 FEDERAL ITEM-153  
 JOB NO 07110A  
 LAFAYETTE AVE.  
 BRIDGE X01 OF 82-22-58  
 ROSA PARKS BLVD (12TH STREET)  
 BRIDGE X01 OF 82-22-59  
 ITEM NO. 89  
 RECONSTRUCTION



RECONSTRUCTION  
 ROSA PARKS BLVD.  
 -LAFAYETTE AVE.

FILE NO.	PROJECT SHEET NO.
STATE PROJECT NO.	

PREPARED UNDER SUPERVISION OF  
 T. E. [Signature]  
 REGISTERED PROFESSIONAL ENGINEER  
 REGISTRATION NO. 8017  
 CITY OF DETROIT  
 ORGANIZATION  
 DETROIT, MICHIGAN  
 ADDRESS  
 (SEAL)

CONTRACT FOR RECONSTRUCTION  
 LOCAL AUTHORITY APPROVAL  
 CITY OF DETROIT  
 CITY ENGINEERING DIVISION  
 ENVIRONMENTAL PROTECTION & MAINTENANCE DEPARTMENT  
 APPROVED BY: [Signature] ASSISTANT CITY ENGINEER  
 DATE: 1-3-82  
 APPROVED BY: [Signature] CITY ENGINEER  
 DATE: 1-3-82

PROJ. NO. BRM 2000(196)  
 CONTROL SEC. BRM 82400  
 JOB NO. 07110A  
 ITEM-153



THE IMPROVEMENTS COVERED BY THESE PLANS SHALL BE IN ACCORDANCE WITH THE MICHIGAN DEPARTMENT OF TRANSPORTATION 1979 STANDARD SPECIFICATIONS AND SUPPLEMENTAL SPECIFICATIONS.

B.P.R.	STATE	PROJECT NO.	YEAR	FISCAL	SHEET NO.	TOTAL SHEETS
DIV. NO.	MICH.	PROJECT NO.	YEAR	FISCAL	SHEET NO.	TOTAL SHEETS
STREET	CITY	COUNTY	TWP.	SHEET NO.	TOTAL SHEETS	
DETRIT	WAYNE					

BRM 82400-07110A R01 OF 82-22-58 & R02 OF 82-22-59

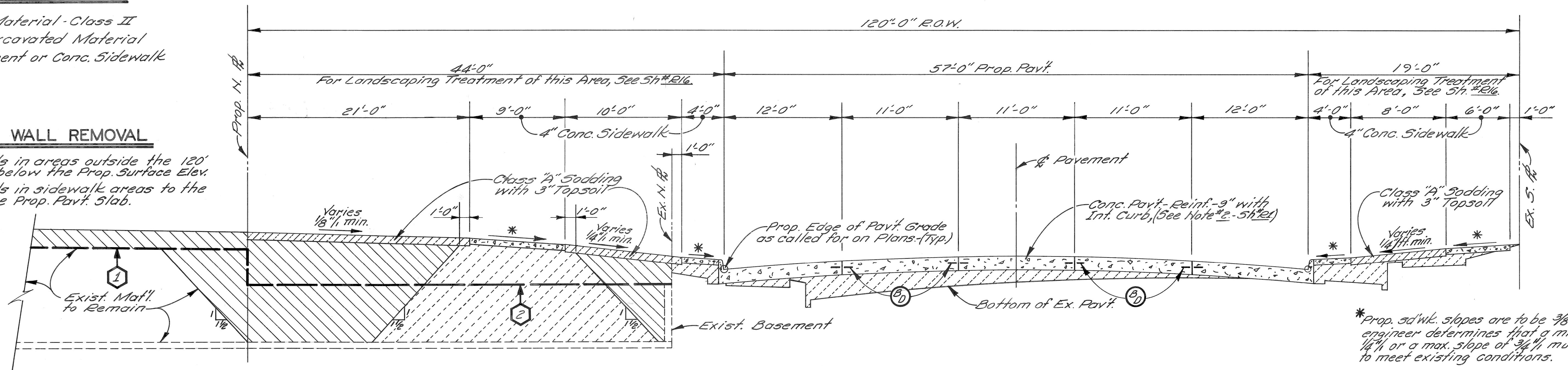


**EARTHWORK LEGEND**

-  Granular Material - Class II
-  Selected Excavated Material
-  Conc. Pavement or Conc. Sidewalk

**BASEMENT WALL REMOVAL**

- ① Remove walls in areas outside the 120' R.O.W. to 1'-0" below the Prop. Surface Elev.
- ② Remove walls in sidewalk areas to the bottom of the Prop. Pavt. Slab.

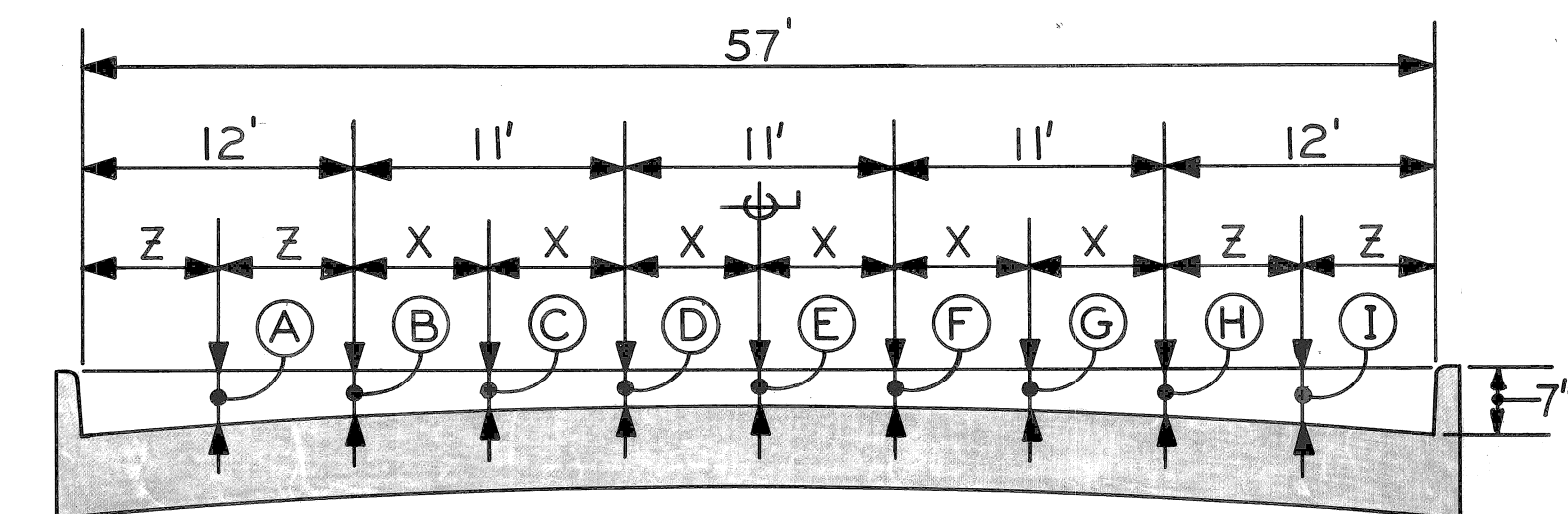


\* Prop. sd'wk. slopes are to be 3/8" unless the engineer determines that a min. slope of 1/4" or a max. slope of 3/4" must be used to meet existing conditions.

**TYPICAL CROSS-SECTION - LAFAYETTE AVE. RECONSTRUCTION**

STATION 22+00 TO STATION 31+00

NO SCALE



PAV'T. WIDTH	CURB HEIGHT	X	(A)	(B)	(C)	(D)	(E)	(F)	(G)	(H)	(I)	(Z)
57'	7"	5 1/2"	4 7/8"	3 3/8"	2 1/8"	1 1/2"	1 1/4"	1 1/2"	2 1/8"	3 3/8"	4 7/8"	6'

**ELEMENTS OF 55' PAVEMENT**

NO SCALE

**JOINT LEGEND**

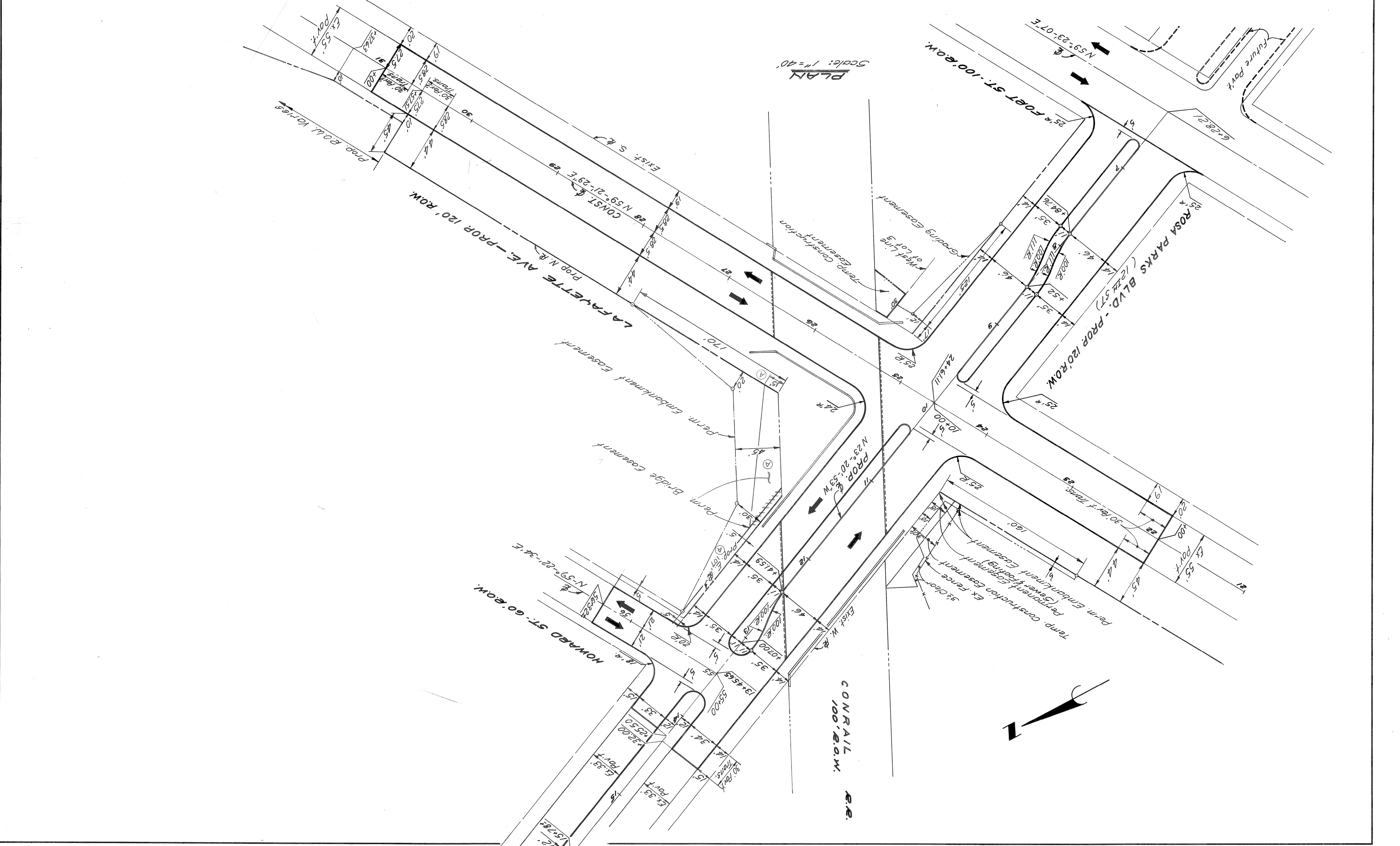
- ⓑ or ⓓ Longitudinal Bulkhead Construction Joint according to M.D.O.T. Std. Dwg. II-A1-D
- ⓓ Optional, B or D

**GENERAL NOTES**

- For Miscellaneous Quantities, See Sh. N<sup>o</sup> 21.
- An embankment section will have Granular Mat'l. Class II under pavt. & sidewalks, Selected Excavated Mat'l. under sod, one on two side slopes from the property line to existing ground, and otherwise be as shown in the basement areas above.

<table border="1"> <tr> <td>COORD</td> <td>DESCRIPTION</td> <td>DRN</td> <td>CKD</td> <td>APVD</td> <td>DATE</td> </tr> <tr> <td colspan="6">REVISIONS LOCATED BY COORDINATES ON SHEET</td> </tr> </table>				COORD	DESCRIPTION	DRN	CKD	APVD	DATE	REVISIONS LOCATED BY COORDINATES ON SHEET						REFERENCE DRAWINGS DESIGNED BY DRAWN BY <i>MAB</i> TRACED BY CHECKED BY <i>W.B.</i>	APPROVED: ENGINEER OF STREETS HIGHWAY ENGINEER	CITY OF DETROIT CITY ENGINEERING DIVISION - EPMD BUREAUS OF STREETS AND HIGHWAYS	ROSA PARKS BLVD. - LAFAYETTE AVE. RECONSTRUCTION TYPICAL CROSS-SECTIONS - LAFAYETTE AVE.	SHEET R2 OF R22 SHEETS CONTRACT NO. 07110A ASSIGNMENT NO. DATE 10-79
COORD	DESCRIPTION	DRN	CKD	APVD	DATE															
REVISIONS LOCATED BY COORDINATES ON SHEET																				

REVISIONS LOCATED BY COORDINATES ON SHEET	DATE	DESCRIPTION	BY
		Change Easement	
APPROVED:	ENGINEER OF STREETS	DRAWN BY:	MR/EC
	HIGHWAY ENGINEER	TRACED BY:	Comly
CITY OF DETROIT BUREAU OF STREETS AND HIGHWAYS		ALIGNMENT	
ROSA PARKS BLVD.-LAFAYETTE AVE. RECONSTRUCTION		DATE 10-79	
SHEET R.3 OF R.22 SHEETS		CONTRACT 07110A	
ASSIGNMENT		NO.	



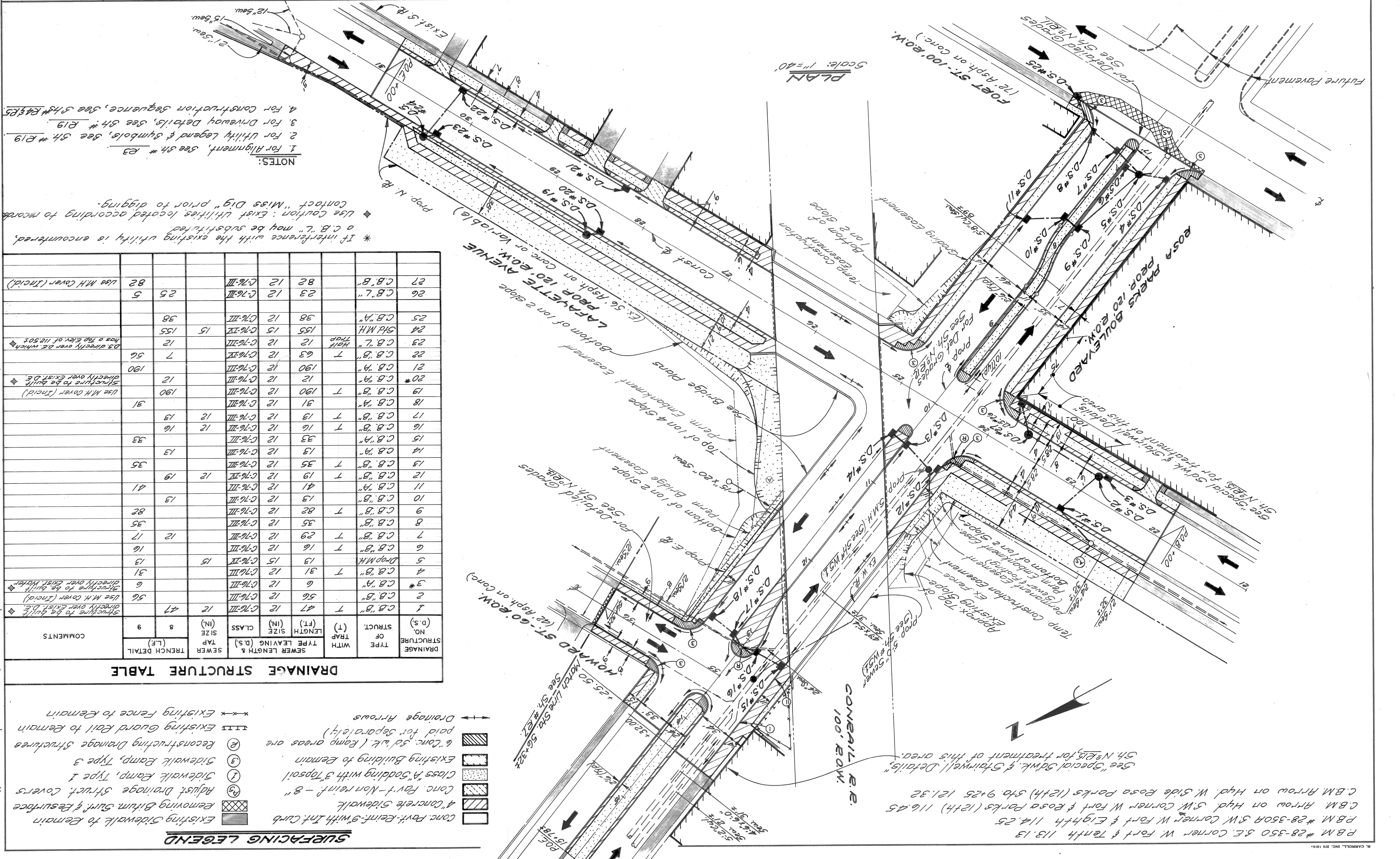












**PLAN**  
RECONSTRUCTION  
ROSA PARKS BLVD - LAFAYETTE AVE

Scale: 1"=40'

**NOTES:**

1. For Alignment, see 34# E3
2. For Utility Legend & Symbols, see 34# E19
3. For Driveway Details, see 34# E19
4. For Construction Sequence, see 34# E4 & E5

\* If interference with the existing utility is encountered, a C.B. "L" may be substituted

◆ Use Caution: Exist Utilities located according to records Contact "Miss Dig" prior to digging.

**DRAINAGE STRUCTURE TABLE**

DRAINAGE STRUCTURE NO. (D.S.)	TYPE OF STRUCT.	WITH TRAP (T)	LENGTH (FT.)	CLASS	SEWER TAP SIZE (IN.)	TRENCH DETAIL (L.F.)	COMMENTS	
								SEWER LENGTH & TYPE LEAVING (D.S.)
1	C.B. "B"	T	47	C-76-III	12	47	Structure to be built directly over exist. D.S.	
2	C.B. "B"	T	56	C-76-III	12	56	Use M.H. Cover (Incid)	
3*	C.B. "A"	T	6	C-76-III	12	6	Structure to be built directly over exist. Water	
4	C.B. "A"	T	31	C-76-III	12	31	Use M.H. Cover (Incid)	
5	Drop M.H.		13	C-76-IV	15	13		
6	C.B. "B"	T	16	C-76-III	12	16		
7	C.B. "B"	T	29	C-76-III	12	12		
8	C.B. "B"	T	35	C-76-III	12	35		
9	C.B. "B"	T	82	C-76-III	12	82		
10	C.B. "B"	T	13	C-76-III	12	13		
11	C.B. "A"	T	41	C-76-III	12	41		
12	C.B. "B"	T	19	C-76-IV	12	19		
13	C.B. "B"	T	35	C-76-III	12	35		
14	C.B. "A"	T	13	C-76-III	12	13		
15	C.B. "A"	T	33	C-76-III	12	33		
16	C.B. "B"	T	16	C-76-III	12	16		
17	C.B. "B"	T	13	C-76-III	12	13		
18	C.B. "A"	T	31	C-76-III	12	31		
19	C.B. "B"	T	190	C-76-III	12	190	Use M.H. Cover (Incid)	
20*	C.B. "A"	T	12	C-76-III	12	12	Structure to be built directly over exist. D.S.	
21	C.B. "A"	T	190	C-76-III	12	190	Use M.H. Cover (Incid)	
22	C.B. "B"	T	63	C-76-IV	12	7	56	D.S. directly over D.S. which has a Top Elev. of 112.505
23	C.B. "L"	Half Top	12	C-76-III	12	12		
24	Std M.H.		155	C-76-IV	15	155		
25	C.B. "A"	T	38	C-76-III	12	38		
26	C.B. "L"	T	23	C-76-III	12	25	5	
27	C.B. "B"	T	82	C-76-III	12	82	Use M.H. Cover (Incid)	

**SURFACING LEGEND**

- Existing Sidewalk to Remain
- 4" Concrete Sidewalk
- Removing Bitum. Surf. & Resurface
- Adjust. Drainage Struct. Covers
- Conc. Pavt.-Non Reinf. - 8"
- Class "A" Sodding with 3" Topsoil
- Existing Building to Remain
- 6" Conc. Sidewalk (Ramp areas are paid for separately)
- Drainage Arrows
- Existing Fence to Remain
- Existing Guard Rail to Remain
- Existing Fence to Remain

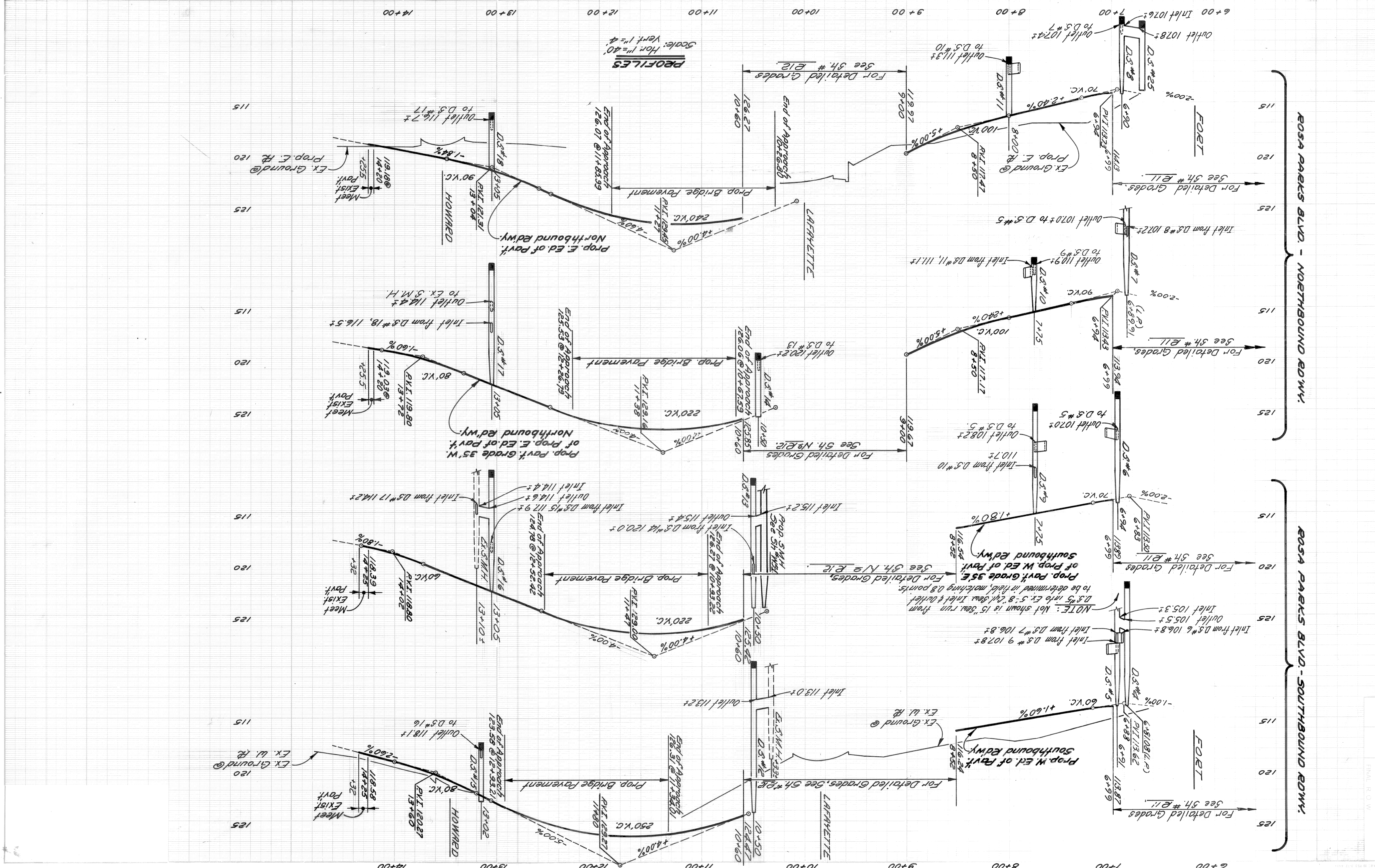
**PLAN**  
Scale: 1"=40'

PORT ST. 100' R.O.W.  
LAFAYETTE AVENUE  
ROSA PARKS BOULEVARD  
HOWARD ST. 60' R.O.W.  
GENERAL R.R. 100' R.O.W.

See "Special Sd.Wk. & Stairwell Details" for treatment of this area.  
See "Special Sd.Wk. & Stairwell Details" for treatment of this area.  
See "Special Sd.Wk. & Stairwell Details" for treatment of this area.

P.B.M. #28-350 S.E. Corner W. Fort & Tenth 113.13  
P.B.M. #28-350A S.W. Corner W. Fort & Eighth 114.25  
C.B.M. Arrow on Hyd. S.W. Corner W. Fort & Rosa Parks (12th) 116.45  
C.B.M. Arrow on Hyd. W. Side Rosa Parks (12th) 5th 9+25 121.32

SHEET 9 OF 22 SHEETS		CONTRACT NO. 07110A		DATE 10-79	
ROSA PARKS BLVD - LAFAYETTE AVE. RECONSTRUCTION		CITY OF DETROIT ENGINEERING DIVISION		E.P.M.D.	
ROSA PARKS BLVD - ROSA PARKS BLVD.		APPROVED		DRAWN BY <i>MM</i>	
		ENGINEER OF EXPRESSWAYS		CHK'D	
				DRN	
				REVISIONS	

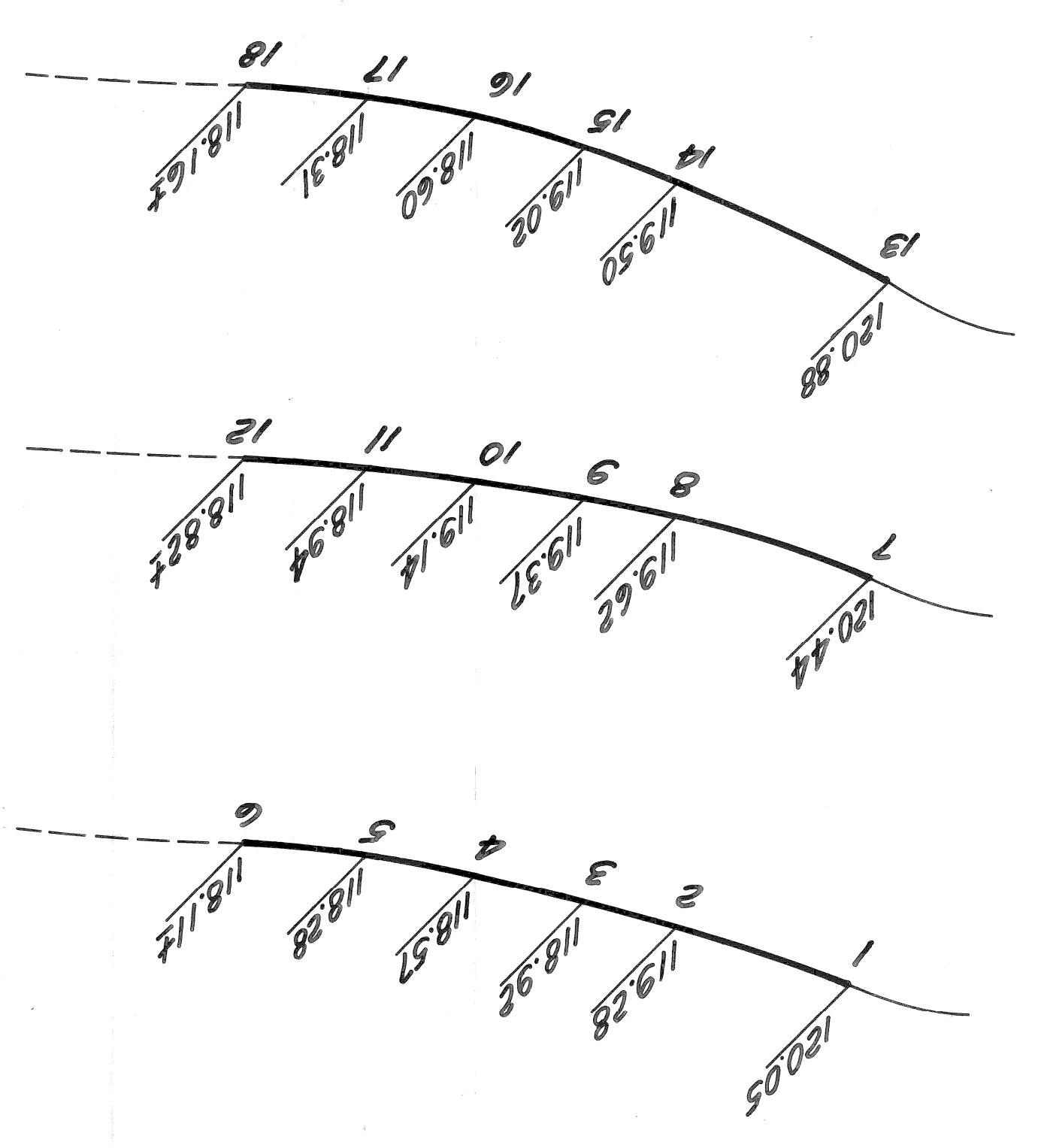




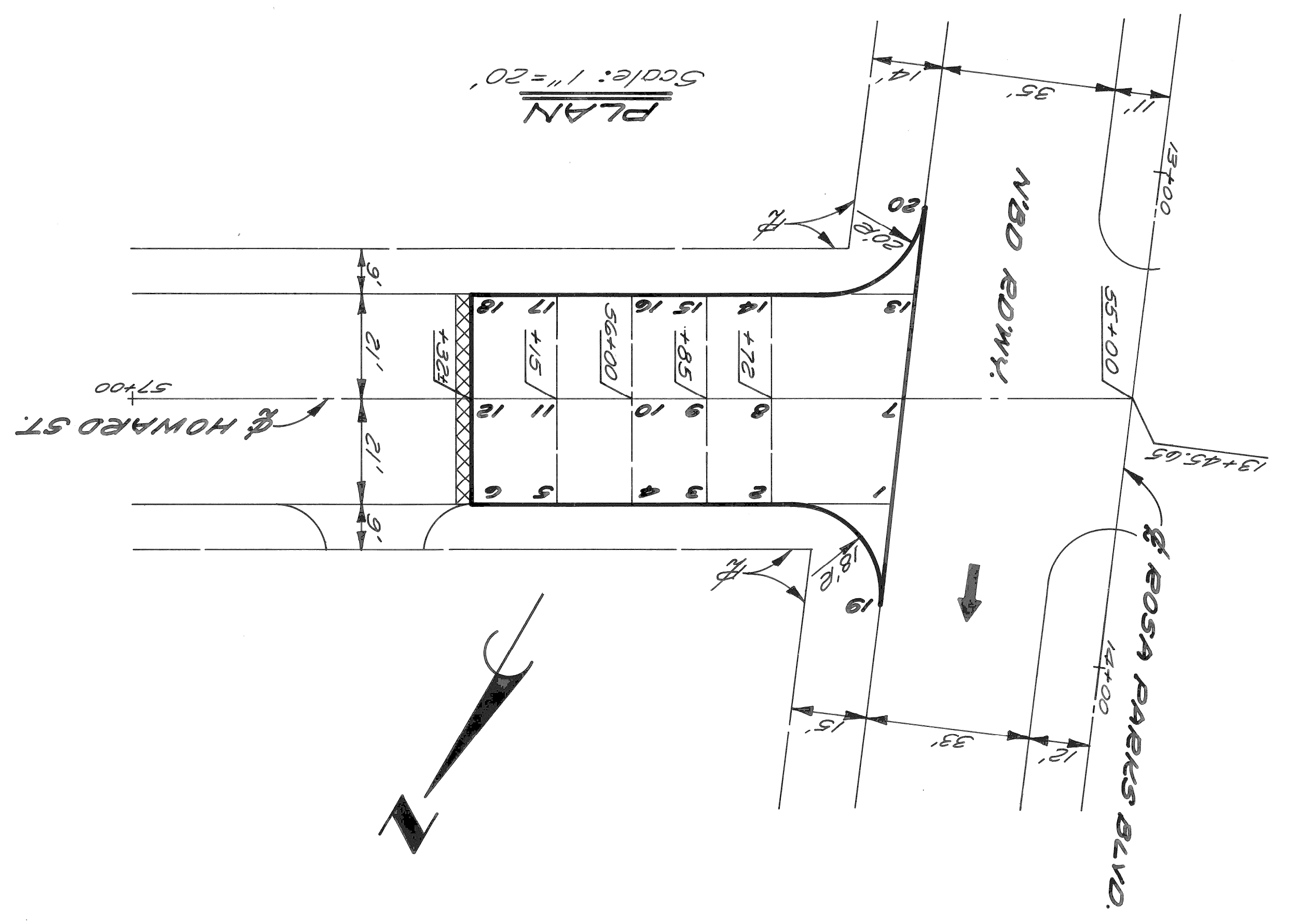
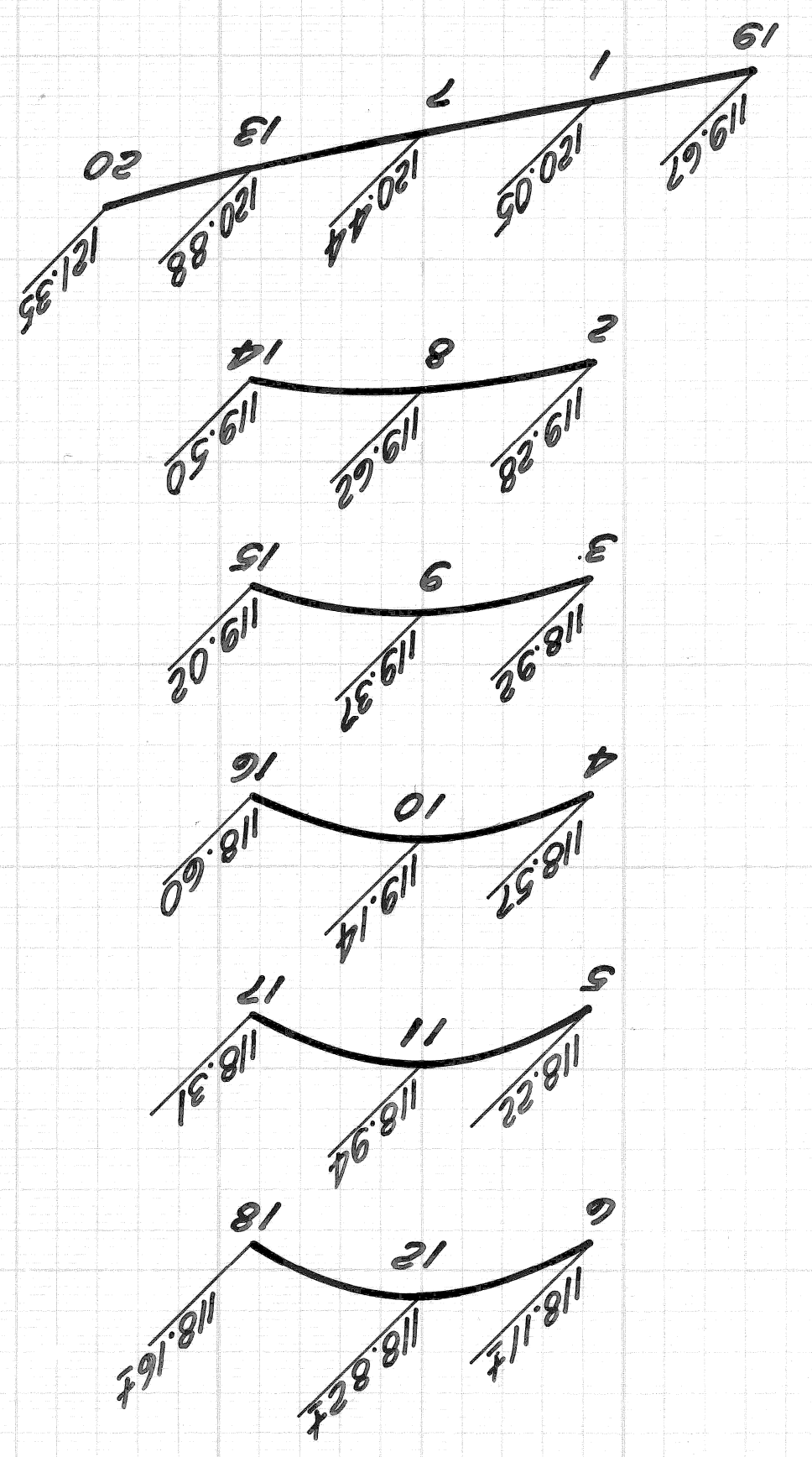




DATE 10-79		INDEXED NO.		ASSIGNMENT		CONTRACT NO. 07110A		SHEET 13 OF 22 SHEETS	
HOWARD ST. AT ROSA PARKS BLVD.		DETAILED GRADES FOR		RECONSTRUCTION		ROSA PARKS BLVD - LAFAYETTE AVE.		CITY OF DETROIT	
BUREAU OF STREETS AND HIGHWAYS		CITY ENGINEERING DIVISION - E.P.M.D.		ENGINEER OF STREETS		CHECKED BY		APPROVED:	
REVISIONS		DESCRIPTION		DR. N. CH. D. AP. VD. DATE		PLAN		GRADE	
ESTIMATE		CHECK		REVIEW		BY		CHECKED BY	
FINAL		HIGHWAY ENGINEER		ENGINEER OF STREETS		R.P.		R.P.	

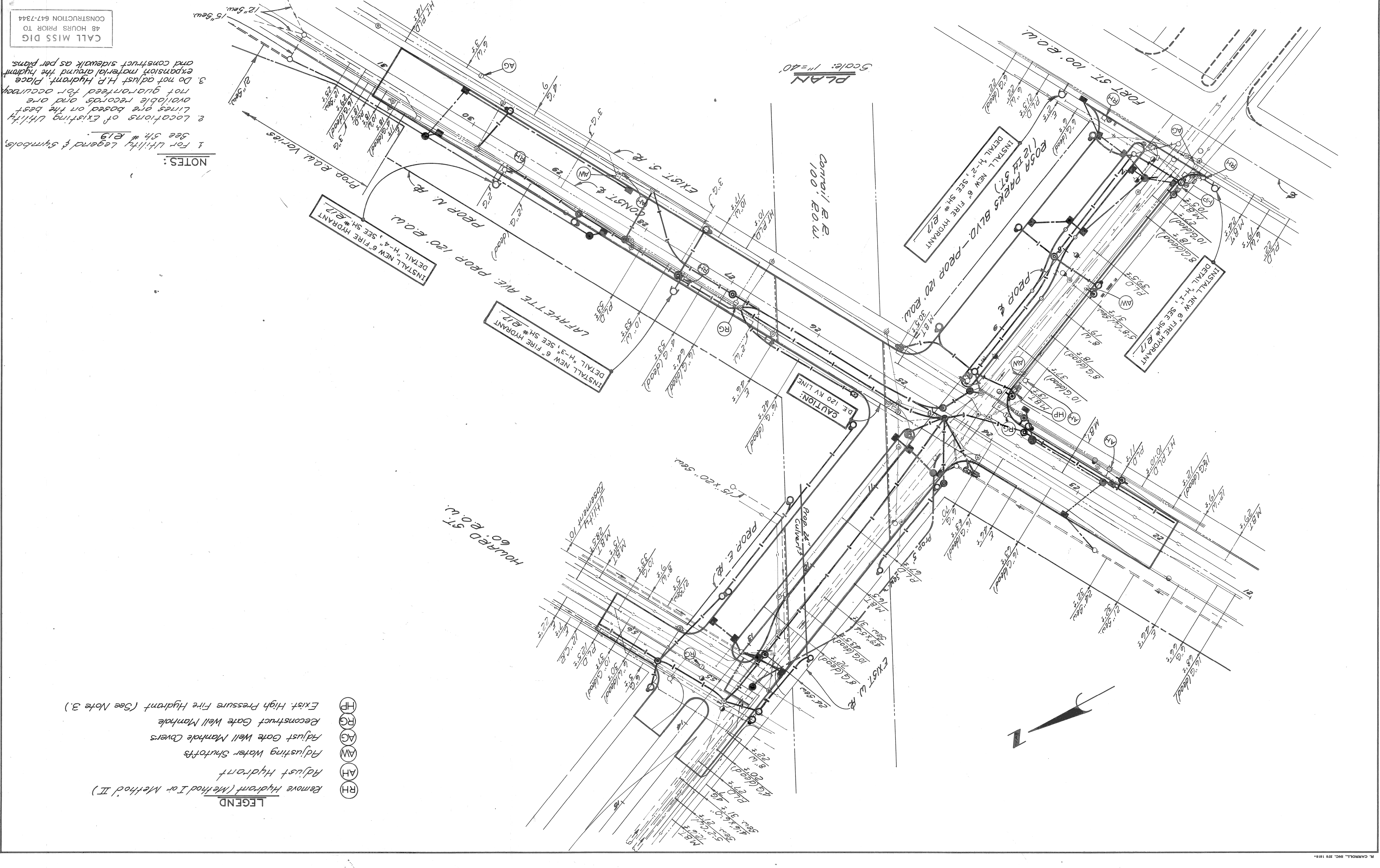


**PROFILES & CROSS-SECTIONS**  
 Scale: Hor. 1" = 20'  
 Vert. 1" = 2'



SCALE	HORIZONTAL	VERTICAL
DATE	PG.	NO.
BOOK	LEV.	CONTRACTOR
BEFORE STARTING CONSTRUCTION		
MUST CHECK WITH UTILITIES FOR LOCATIONS OF EXISTING STRUCTURES WHETHER OR NOT INDICATED ON PLANS.		
NOTE - FOR SYMBOLS & ETC., SEE STANDARD DETAIL DRAWING NO. C-4173		

REVISIONS LOCATED BY COORDINATES ON SHEET		CHECKED BY M. B.		ENGINEER OF STREETS		ENGINEER OF STREETS		APPROVED:	
DESCRIPTION		DRAWN BY M.S.		ENGINEER OF STREETS		ENGINEER OF STREETS		DESIGNED BY	
COMNO.		DATE		DATE		DATE		DATE	
DATE		DATE		DATE		DATE		DATE	



CALL MISS DIG  
48 HOURS PRIOR TO  
CONSTRUCTION 647-7344

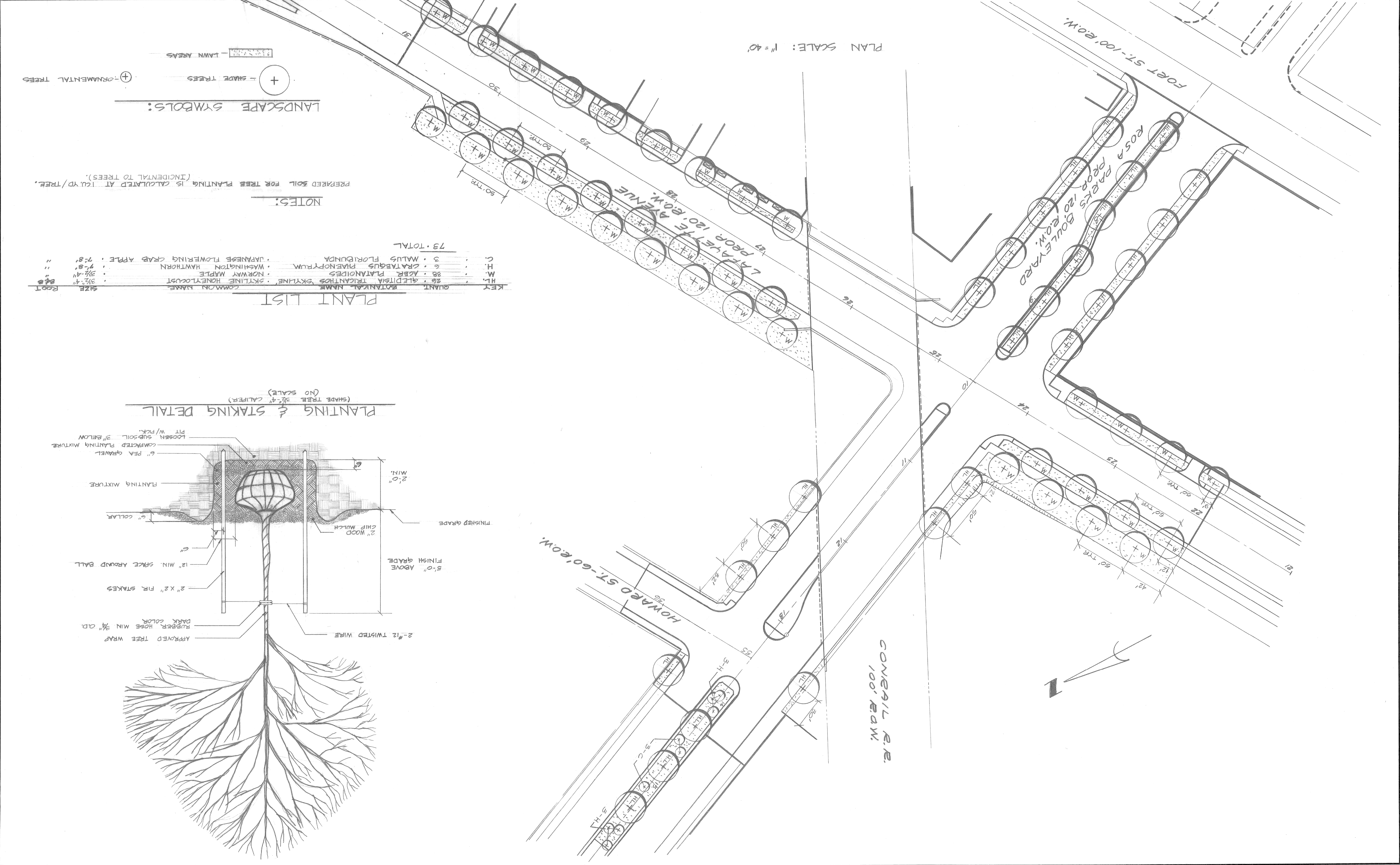
- NOTES:
- 1 For Utility Legend & Symbols, See Sh # R19.
  - 2 Locations of existing Utility Lines are based on the best available records and are not guaranteed for accuracy.
  - 3 Do not adjust H.P. Hydrant. Place expansion material around the hydrant and construct sidewalk as per plans.

- LEGEND
- RH Remove Hydrant (Method I or Method II)
  - AH Adjust Hydrant
  - AW Adjusting Water Shutoffs
  - AG Adjust Gate Well Manhole Covers
  - RG Reconstruct Gate Well Manhole
  - HP Exist. High Pressure Fire Hydrant (See Note 3.)





REVISIONS LOCATED BY COORDINATES ON SHEET		CHECKED BY <i>Edward J. Clark</i>		CITY OF DETROIT	
COORD.	DESCRIPTION	TRACED BY	DESIGNED BY	ENGINEER OF STREETS	BUREAU OF STREETS AND HIGHWAYS
DATE	NO.	DRAWN BY	APPROVED:	ENGINEER OF STREETS	
10-79	ASSIGNMENT	W. RUZINSKY		HIGHWAY ENGINEER	
	NO.				
	CONTRACT				
	07110A				
	SHEET 16 OF 22 SHEETS				
LANDSCAPE DEVELOPMENT PLAN		ROSA PARKS BLVD. - LAFAYETTE AVE.		CITY OF DETROIT	
LANDSCAPE DEVELOPMENT PLAN		RECONSTRUCTION		ENGINEERING DIVISION - E.P.M.D.	



LANDSCAPE SYMBOLS:

+ - SHADE TREES

+ - ORNAMENTAL TREES

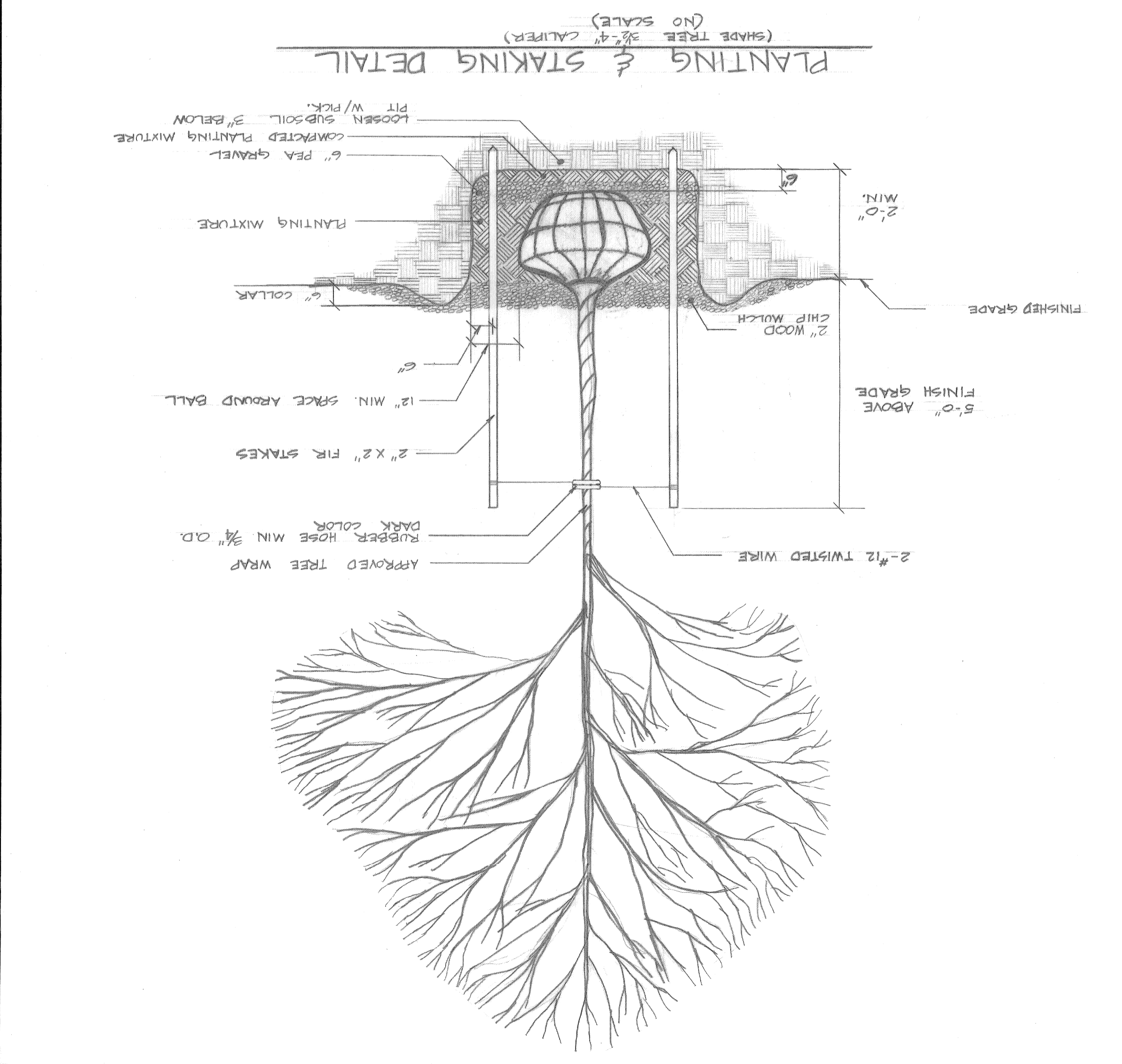
--- - LAWN AREAS

NOTES:

PREPARED SOIL FOR TREE PLANTING IS CALCULATED AT 1 CU. YD./TREE. (INCIDENTAL TO TREES).

PLANT LIST

KEY	QUANT	BOTANICAL NAME	COMMON NAME	SIZE	ROOT
HL	26	GLEDTISIA TRIANTHOS SKYLINE	SKYLINE HONEYLOCUST	3 1/2" x 4"	8 1/2"
W.	38	ACER PLATANOIDES	NORWAY MAPLE	3 1/2" x 4"	8 1/2"
H.	6	CRATAEGUS PHAENOPYRUM	WASHINGTON HAWTHORN	4-8"	"
C.	3	MALUS FLORIBUNDA	JAPANESE FLOWERING CRAB APPLE	7-8"	"
73 - TOTAL					



**PAY ITEMS**

Fire Hydrants - Method I - 2 Each  
 Relocate Hydrant - Method I - 2 Each  
 Remove Hydrant - Method I - 1 Each  
 Remove Hydrant - Method II - 2 Each  
 Adjust Hydrant - 3 Each

All "C" Details, Tees, Excavation, Backfill, Thrust Blocks are incidental to the above pay items.

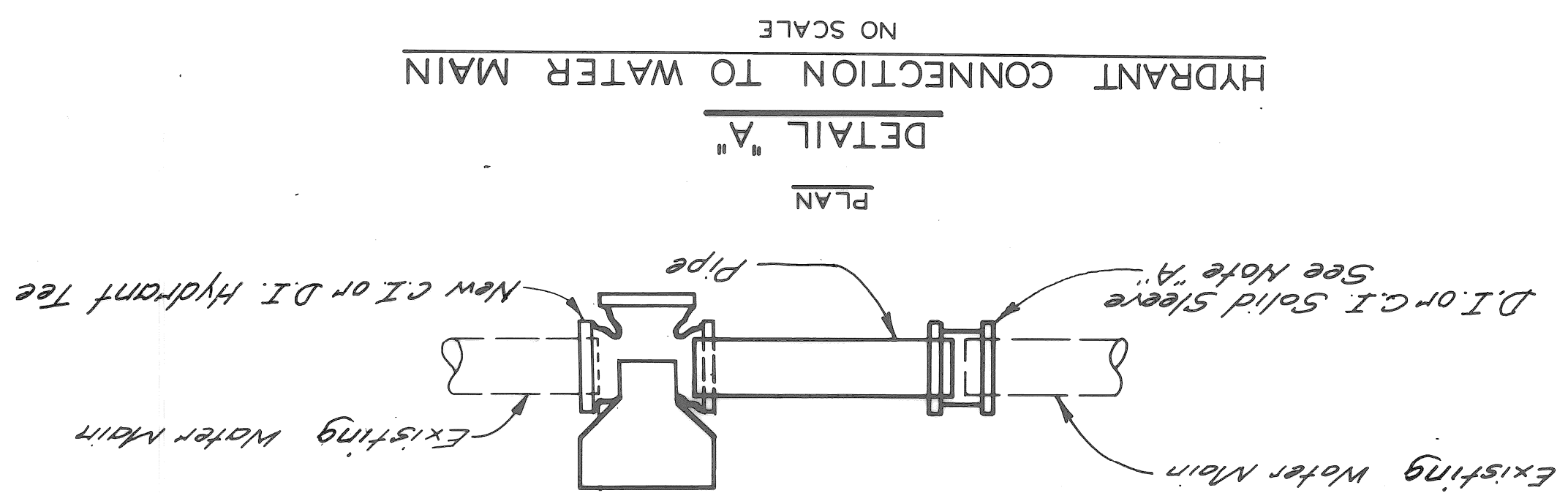
\* Information herein is to be considered only as a guide. Final figures depend upon the exact location of the hydrant as determined by the Fire Department just prior to installation.  
 (A) 6" Gate Valve & Gate Box shall be furnished & installed with Hydrant.  
 (B) Caution: Ex. 120 KV D.E. has only 4-7/8" cover in this area.

**SCHEDULE OF HYDRANT INSTALLATION ON EXISTING MAINS**

DETAIL FROM	SIZE OF NEW HYDRANT TO EX. MAIN	OR EX. HYD. TEE	LENGTH	TRENCH DETAIL	PIPE SIZE	X	DETAIL
H-1	6" x 6"	15'	12				
H-2	6" x 6"	12'	12				
H-3	6" x 10"	20'	12				
H-4	6" x 10"	20'	12				

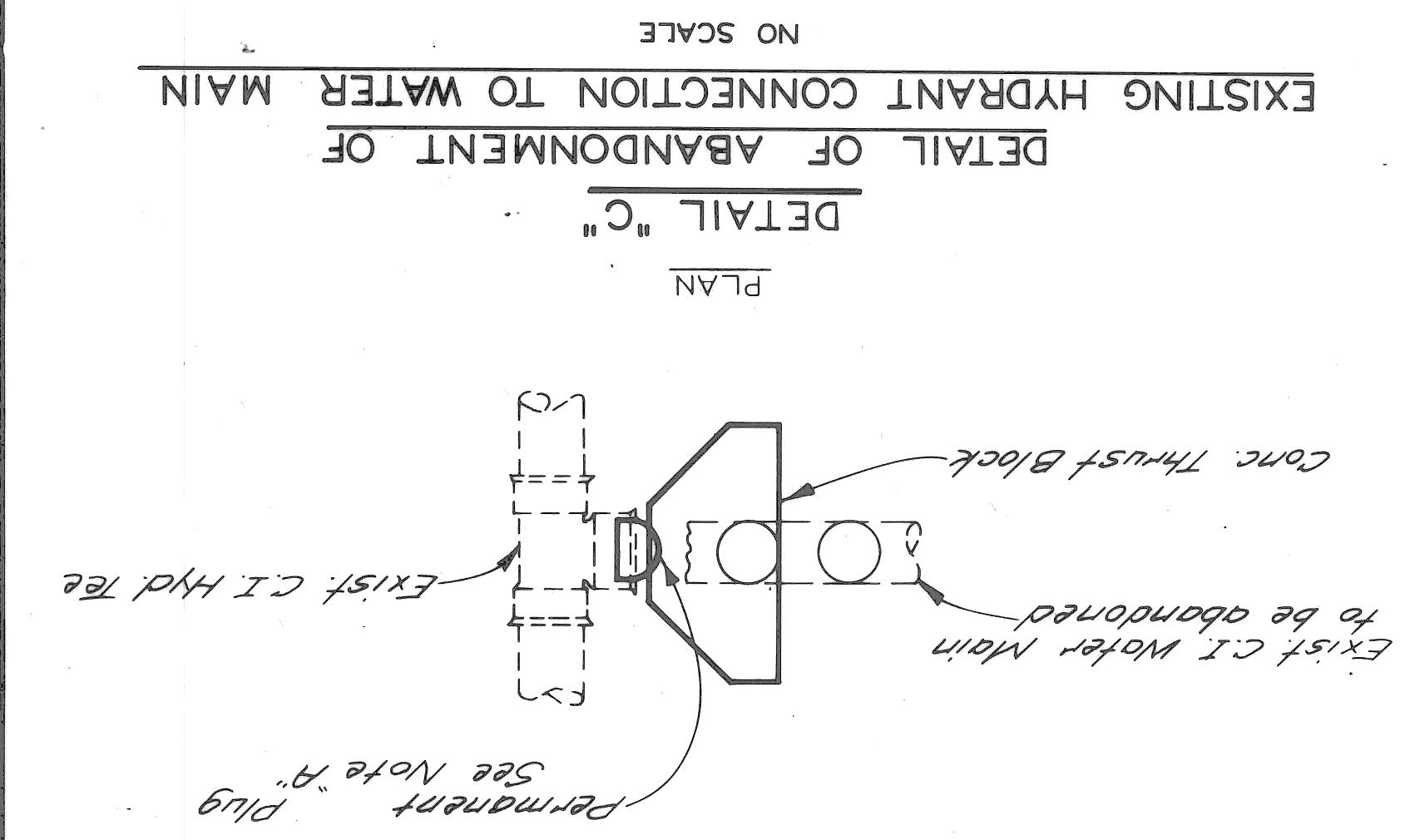
**CONSTRUCTION NOTES**

Encasements and Thrust Blocks shall be poured against undisturbed earth. Bottom 3" of Encasement may be poured separate from Encasement and used as a sub-footing.  
 All Encasements and Thrust Blocks shall terminate at the face of pipe bells.  
 Removal of abandoned Water Mains as required for clearance to construct the Proposed Water Mains is incidental to Water Main construction.  
 Sheeting and bracing, where required, shall be installed by the contractor as incidental to Water Main construction.



**GENERAL NOTES**

Existing Water Mains, as shown, indicate approximate location only as shown by D.M.W.D. records and no guarantee is made as to completeness or accuracy.  
 The locations and elevations of existing utilities are shown in accordance with available data. The Contractor shall expose these utilities, where required, to determine actual locations.  
 Other utilities may be making alterations to their existing systems in the vicinity of the Water Main construction shown on the plans. These utilities should be consulted for the latest information regarding the location of their facilities.  
 A minimum clearance of one foot vertically and three and one half feet horizontally shall be maintained between the Water Main and other utilities, unless otherwise shown on the plans or approved by the Engineer. If a conflict is indicated between the Water Main and any other utility, that utility should be consulted.  
 The location of Fire Hydrants, as shown, are approximate. D.F.D. will give exact location of proposed fire hydrants prior to installation.  
 "Ductile Iron Pipe in sizes 3" through 16" is permitted as a part of the Cast Iron Pipe Specifications."



**NOTES FOR CONTRACTOR'S CONNECTIONS**

Contractor shall cut and cap or plug existing Water Mains to remain in service where required in accordance with supplemental specifications.  
 Blow-off Assemblies, Plugs and Caps to be installed and/or removed by Contractor. Plugs and Caps have not been shown.  
 Contractor shall install and later remove all temporary Plugs, Tees and Blow-off Assemblies.  
 Contractor shall furnish and install Pipe and Fittings necessary to complete the connections shown.  
 Contractor shall construct all Concrete Thrust Blocks and Gate Wells.  
 Contractor shall install all temporary bracing for Water Main.  
 It is not normally anticipated that bends requiring Thrust Blocks will be required for connections unless otherwise shown.  
**NOTE "A"**  
 Plugs and caps, temporary blow-offs, air valves, corporation stops, pipe jacks, solid sleeves, jointing material, bracing and blocking are incidental to fire hydrant construction and will not be paid for separately.

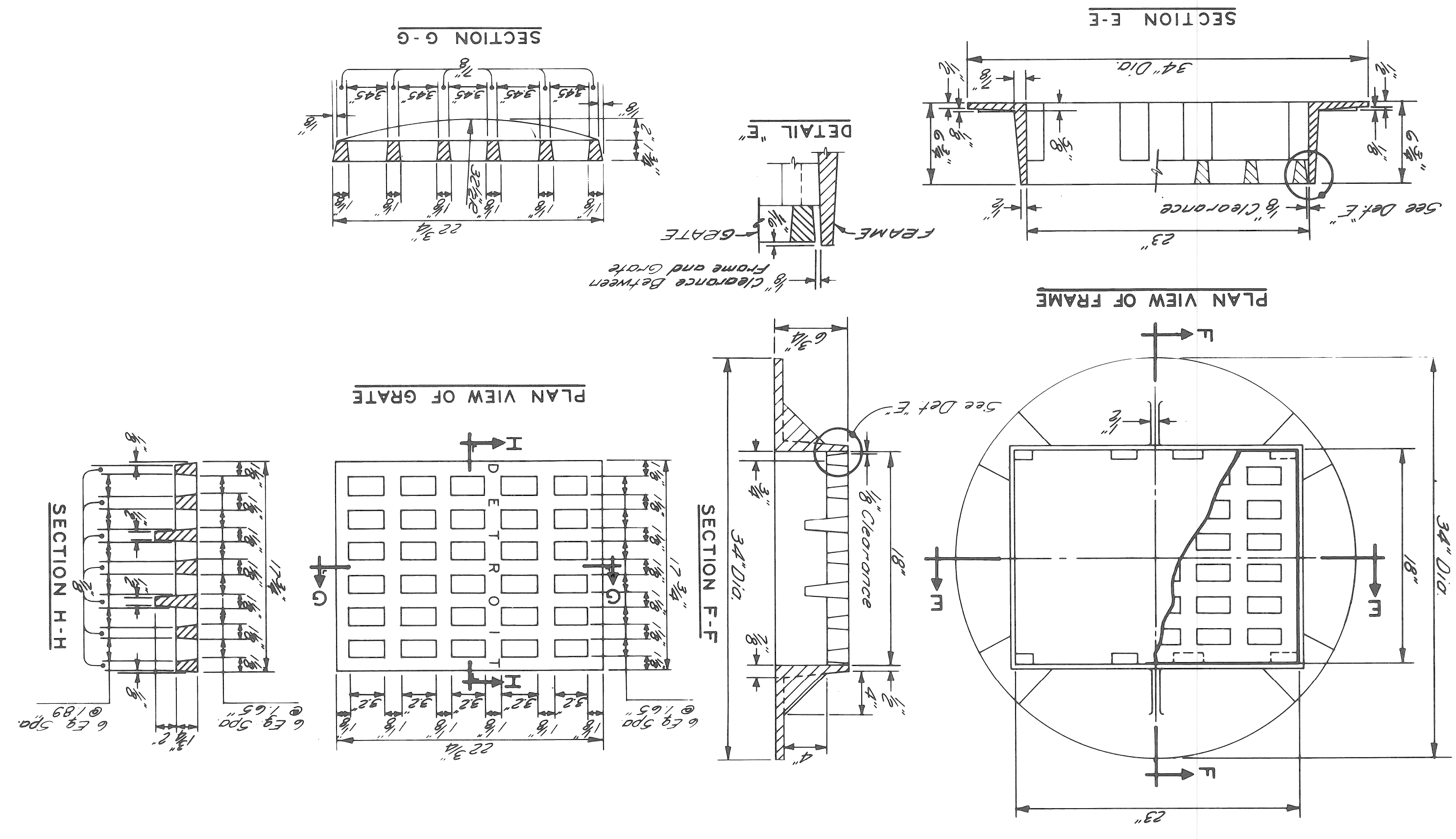




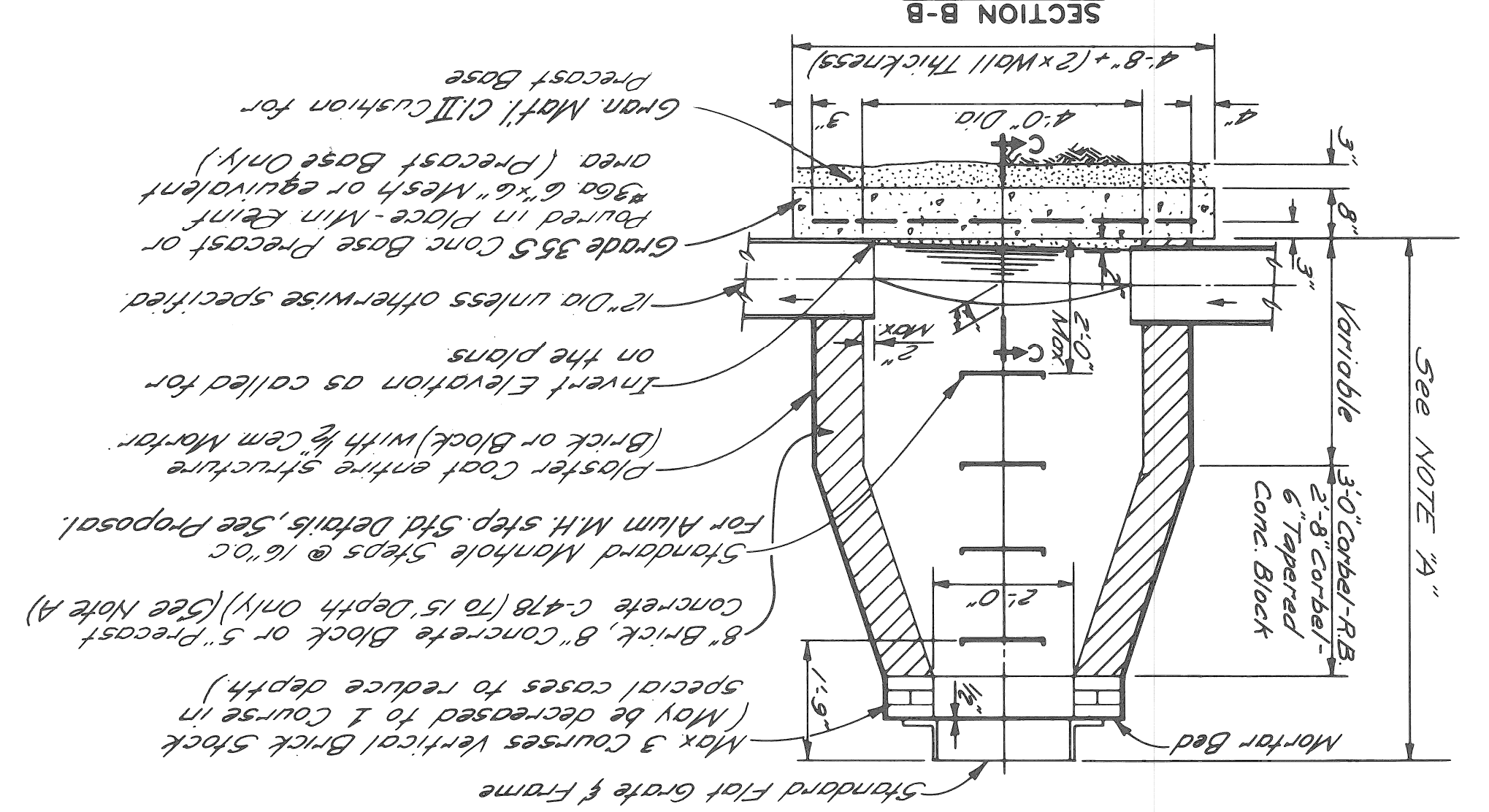


SHEET 2 OF 2 SHEETS		CONTRACT 07110A		ASSIGN. NO.		DATE 10-79	
DETAILS OF STANDARD CATCH BASINS "A" & "B" AND FLAT GRATE & FRAME				CITY OF DETROIT			
CITY ENGINEERING DIVISION				E.P.M.D.			
APPROVED: <i>John Erickson</i>				ENGINEER OF STREETS			
DRAWN BY: M. POLITO				ENGINEER OF EXPRESSWAYS			
CHECKED BY: D. MILZ				HEAD CIVIL ENGINEER			
REVISIONS LOCATED BY COORDINATES ON SHEET							

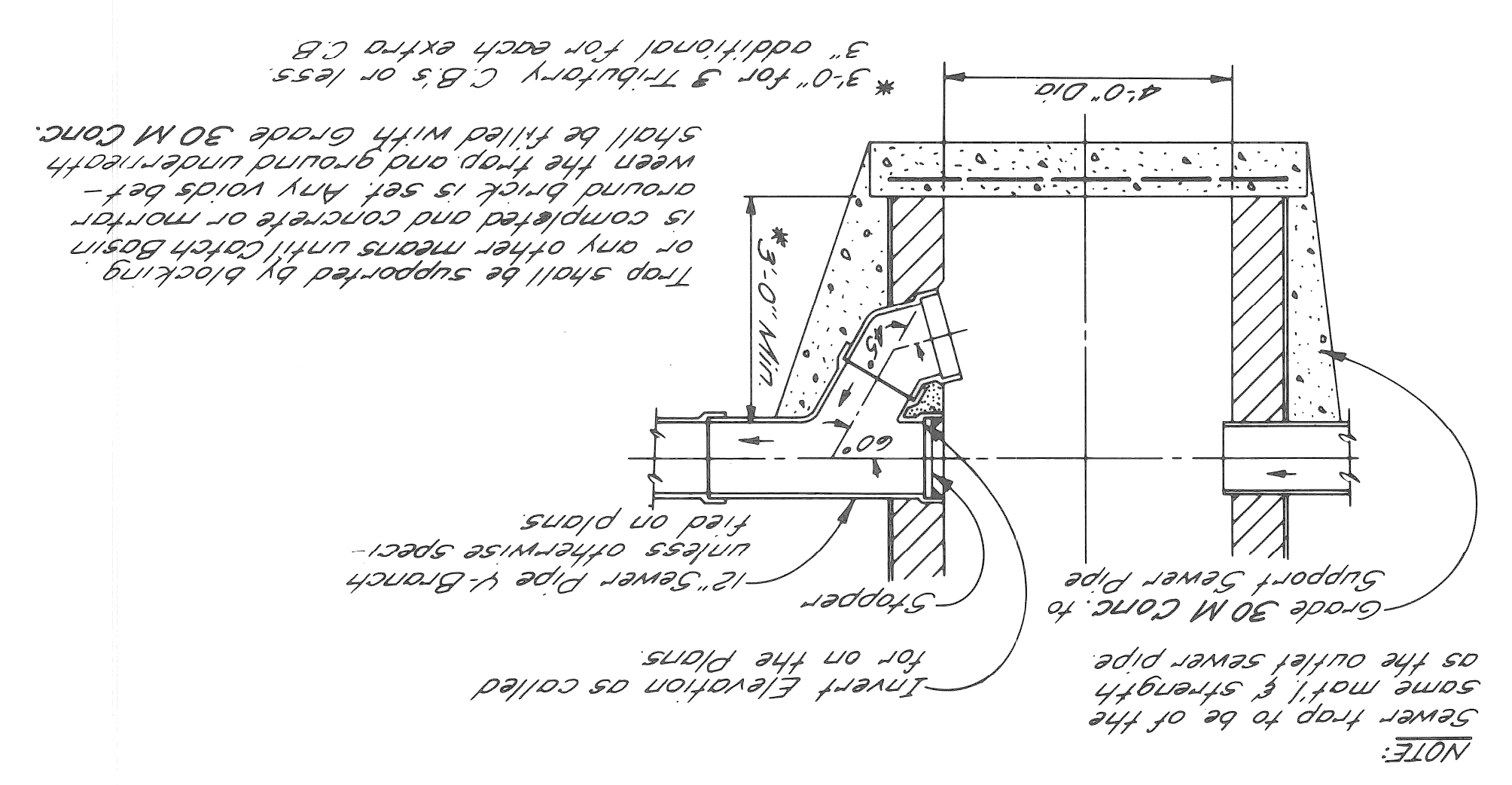
STANDARD FLAT GRATE AND FRAME  
NO SCALE



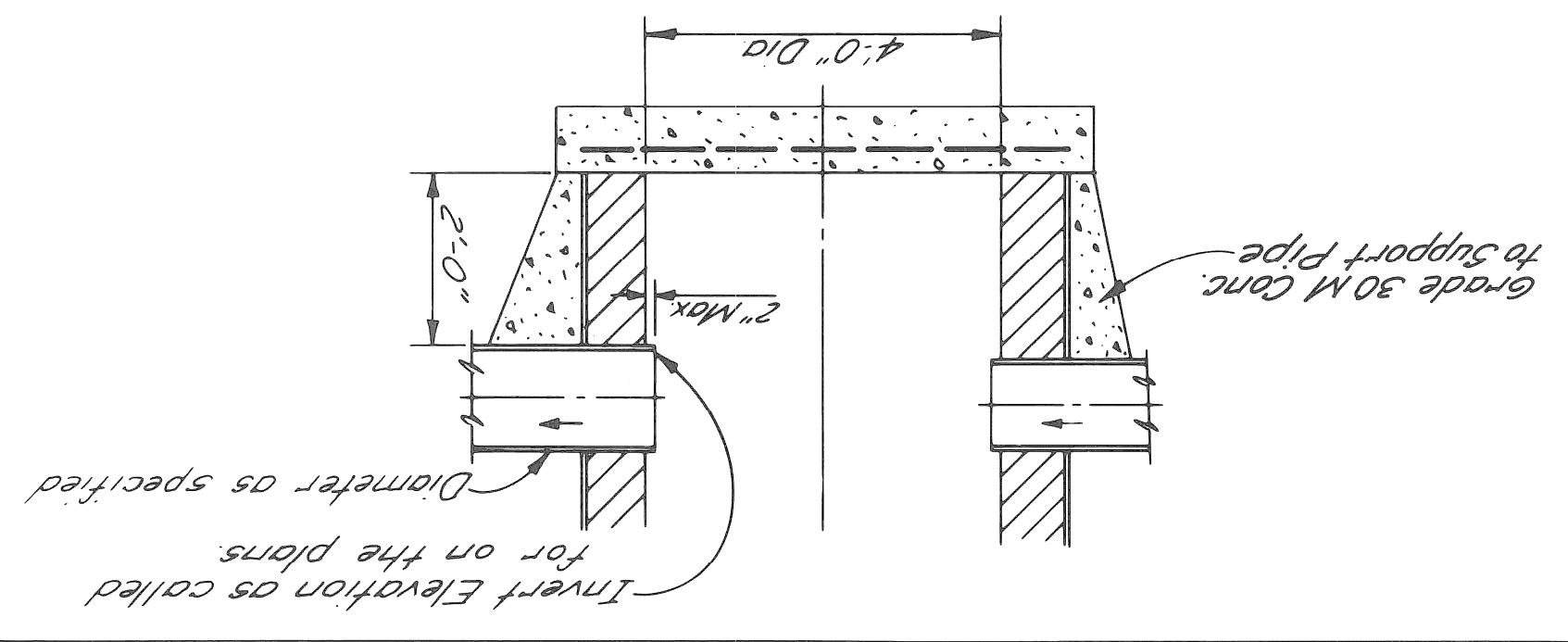
CATCH BASIN "B"  
NO SCALE



DETAIL OF TRAP FOR CATCH BASIN "B"  
NO SCALE



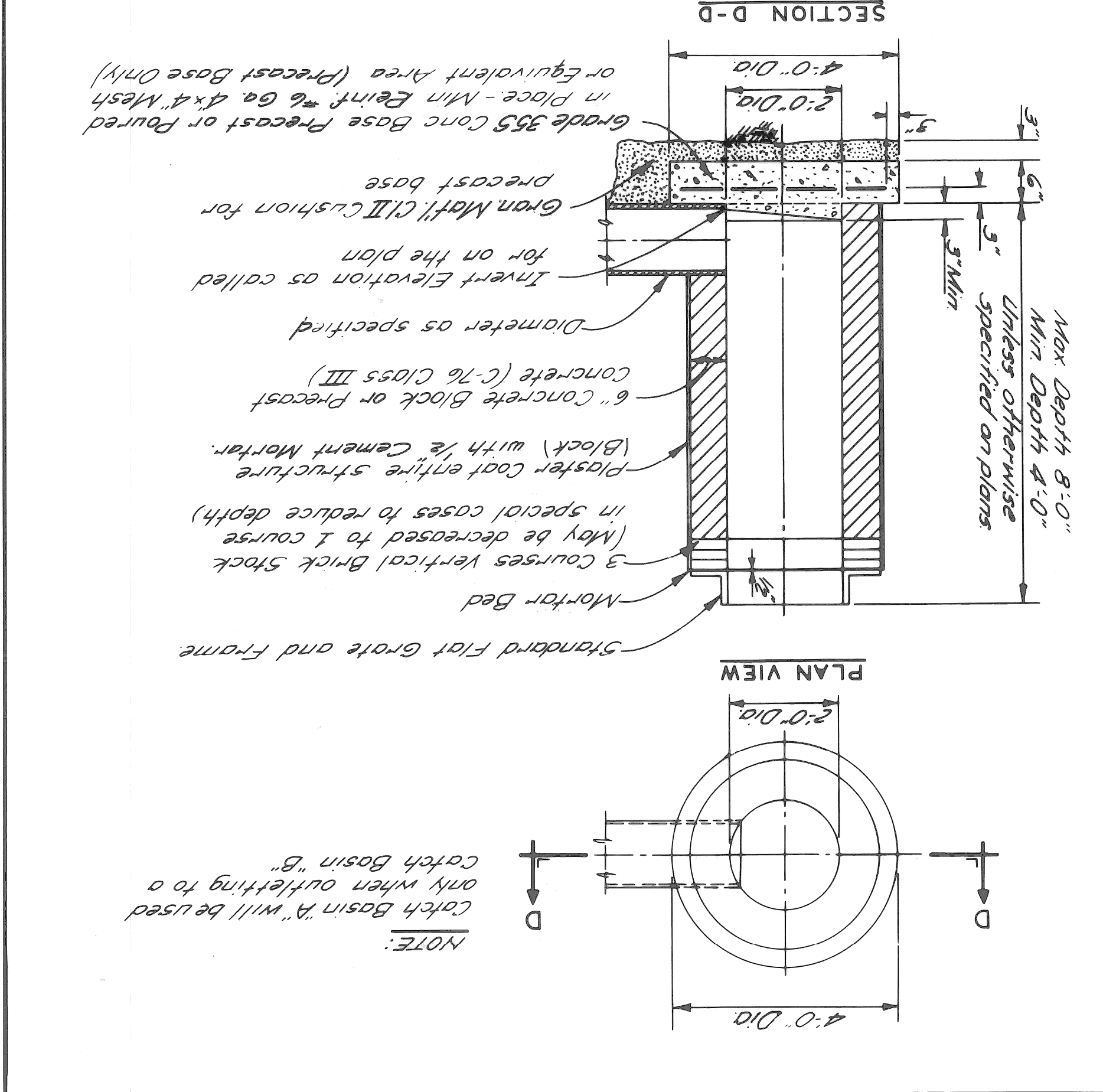
DETAIL OF SUMP FOR CATCH BASIN "B"  
NO SCALE



GENERAL NOTES

- The materials & workmanship shall be in accordance with the current Standard Specifications.
- Center of catch basin shall be 20 inches from back of curb.
- All sizes of pipe, and elevations for top & bottom of structures shall be determined from the plans or construction requirements.
- The bell shall be removed from the first length of outlet pipe projecting through the wall of the structures.
- When any structure is constructed of precast concrete or concrete blocks, the top of the masonry shall be left sufficiently low to permit proper adjustment of cover to grade by the use of mortar or bricks as directed by the Engineer.
- A trap, as detailed on this sheet, shall be placed where called for in the outlet sewer line of Catch Basins "B". This trap shall be set into the masonry wall as shown on the detail. The space between the faces of the wall & the trap shall be completely filled with cement mortar or concrete, so as to hold trap securely in place.
- The traps will be paid for separately of the Contract Unit Price each, which price shall include the extra catch basin construction required and for furnishing and installing the trap.
- A plaster coat of mortar 1/2 inch in thickness shall be applied to the outer surface of the structure as shown. A 1/2 inch cement plaster coat shall be placed on the inside of all sumps.
- Contractor shall verify elevations of existing utilities to enable construction to indicated elevations shown on drawings. It is necessary to invert elevations shown on the drawings may be altered in the field to clear existing utilities. Such alterations, upward or downward, shall be at no change in contract price.
- When precast concrete pipe sections are used for catch basins, either a section of the inlet and outlet pipes or an opening or eye for the inlet & outlet pipes shall be cast into the wall of the catch basin pipe when it is being manufactured. Eyes in precast pipe sections shall be furnished to accommodate a flexible joint connection such as Press-Wedge by Press Seal Gasket Corp. or Res-Seal by Seales Mfg. Corp.

CATCH BASIN "A"  
NO SCALE



NOTE: Catch Basin "B" will be used only when referring to a Catch Basin "B".

