

Summary of Parts

No	Description	Mark	Qty
16	STRUTS	U2 U3	50
2	STRUTS	U2 U3	50
2		F1	50
2		F2	50

WISCONSIN BRIDGE & IRON CO.
 NORTH MILWAUKEE, WISCONSIN

CONTRACT NO. 9292 - ERECTED BY W.B. and I.C.
 FOR City of Detroit

LOCATION Howard St. Bridge
 DETAILS OF Overhead Breeching

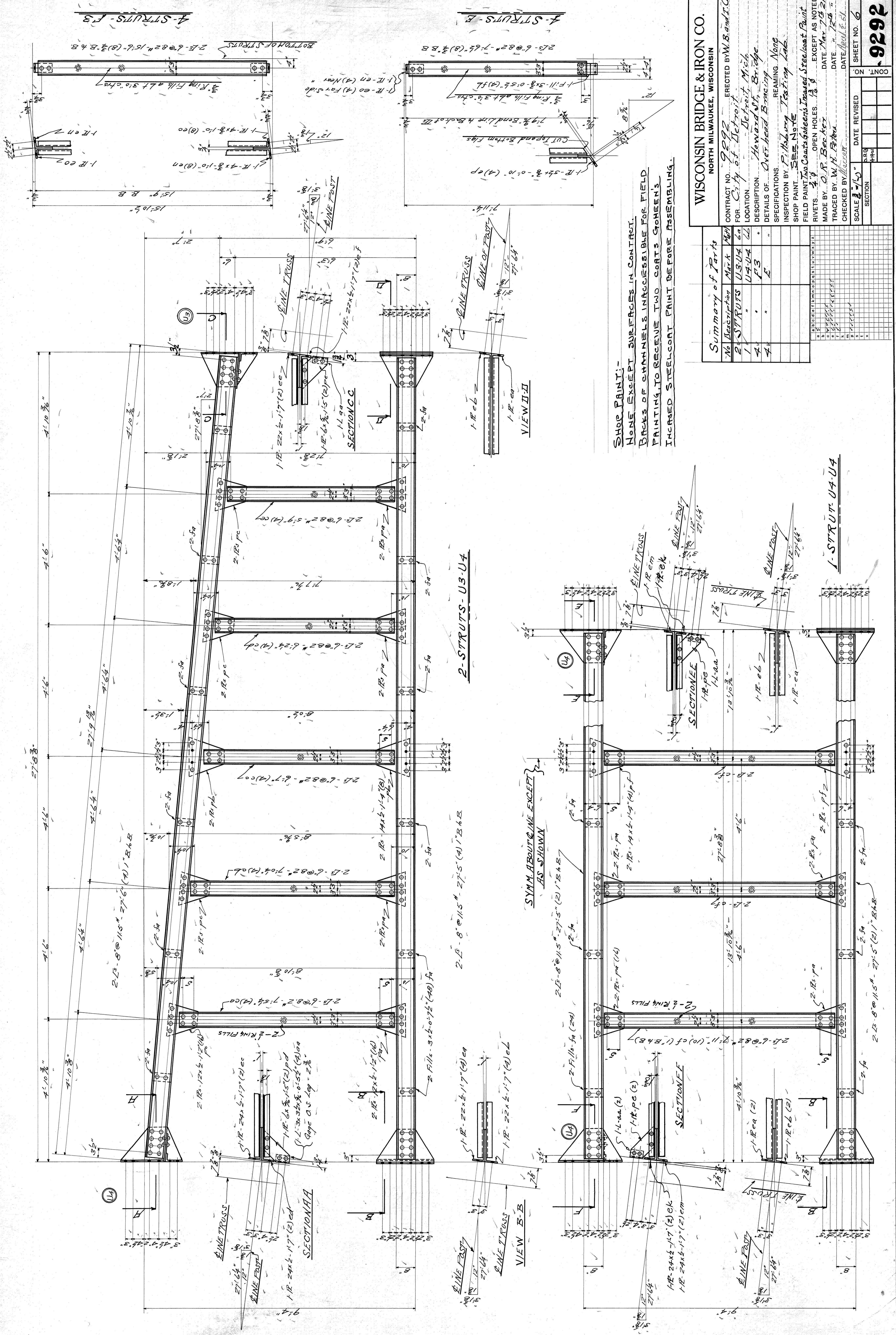
INSPECTION BY F. H. Leary Testing Labs
 READING NAME

SHOP PAINT - SEE HOYE
 FIELD PAINT - TWO COATS (GREENS) UNPAINTED STEELWORK PAINT
 RIVETS 3/8" OPEN HOLES 1/8"

MADE BY O. R. Beecher DATE Mar 21 1921
 TRACED BY W. H. Bitter DATE Mar 21 1921
 CHECKED BY M. J. ... DATE Mar 21 1921

SCALE 1/4" = 1'-0" DATE REVISED ON INOC

SHEET NO. 5



SHOP PAINT:-
 NONE EXCEPT SURFACES IN CONTACT.
 BACKS OF CHANNELS INACCESSIBLE FOR FIELD
 PAINTING, TO RECEIVE TWO COATS GOHENS
 INCREASED STEELCOAT PAINT BEFORE ASSEMBLING.

WISCONSIN BRIDGE & IRON CO.
 NORTH MILWAUKEE, WISCONSIN

CONTRACT NO. 9292
 ERCTED BY W.B. and I.C.
 FOR City of Detroit

LOCATION Detroit Mich.
 DESCRIPTION Howard St. Bridge

DETAILS OF Overhead Bracing
 SPECIFICATIONS REAMING None

INSPECTION BY Pitkin & Co. Testing Lab.
 SHOP PAINT SEE NOTE

FIELD PAINT Two Coats Goehens Increased Steelcoat Paint

RIVETS 4.0 OPEN HOLES 1/8"

MADE BY O.F. Becker DATE Mar. 7 1921

TRACED BY W.H. Rhee

CHECKED BY [Signature]

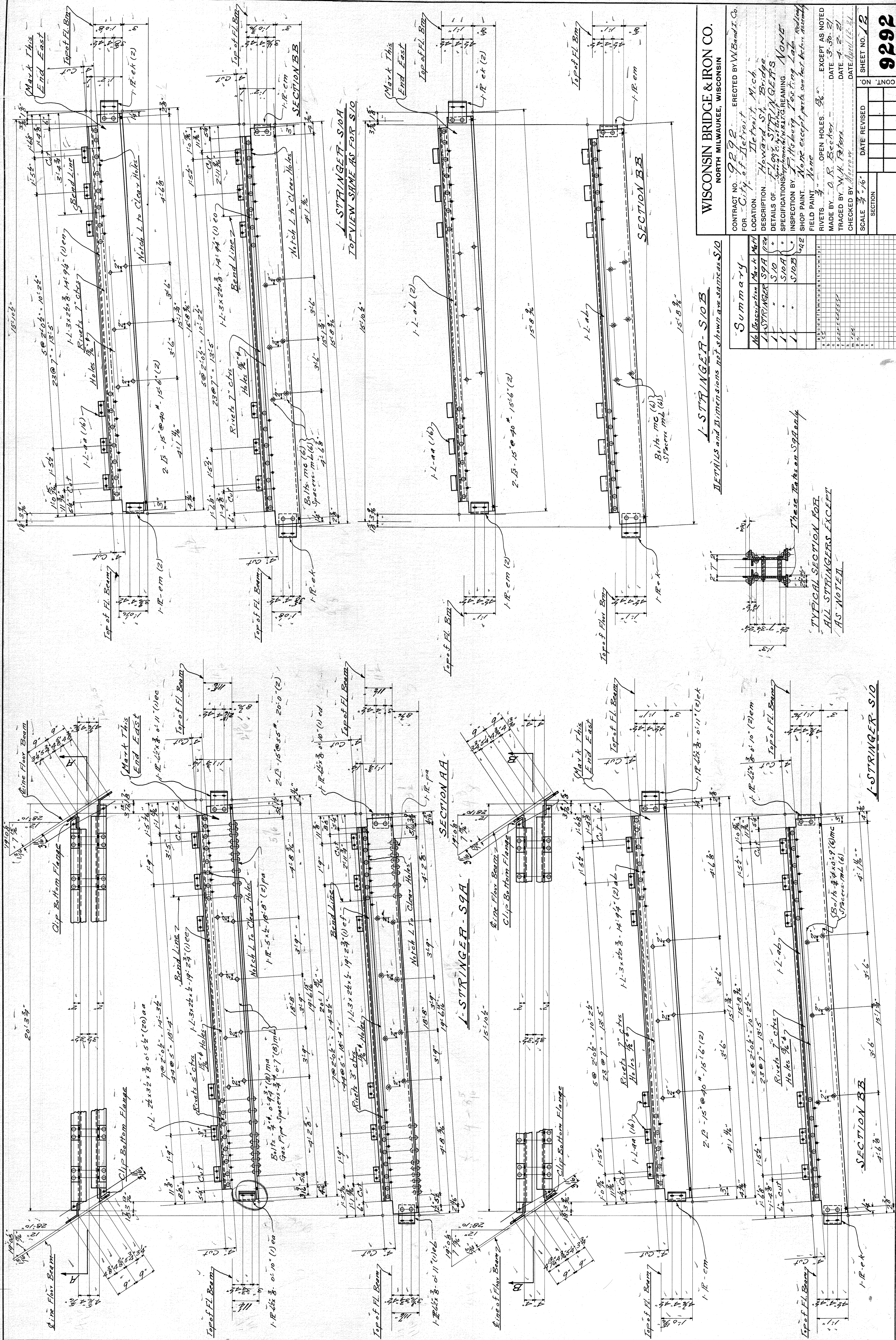
SCALE 3/4" = 1'-0"

DATE REVISED []

SHEET NO. 6

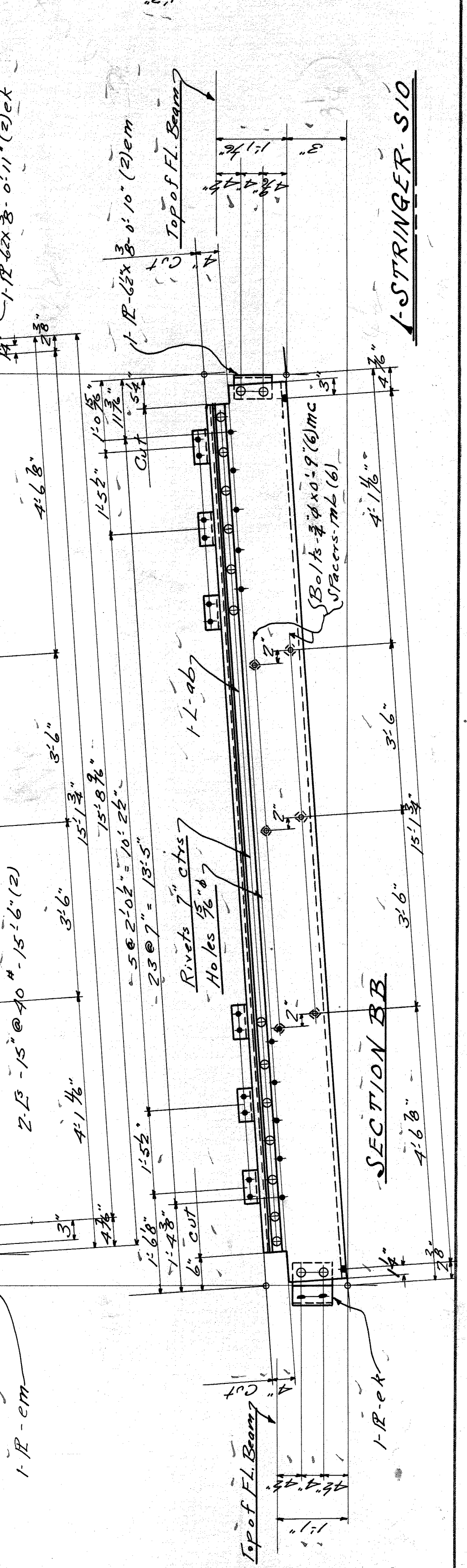
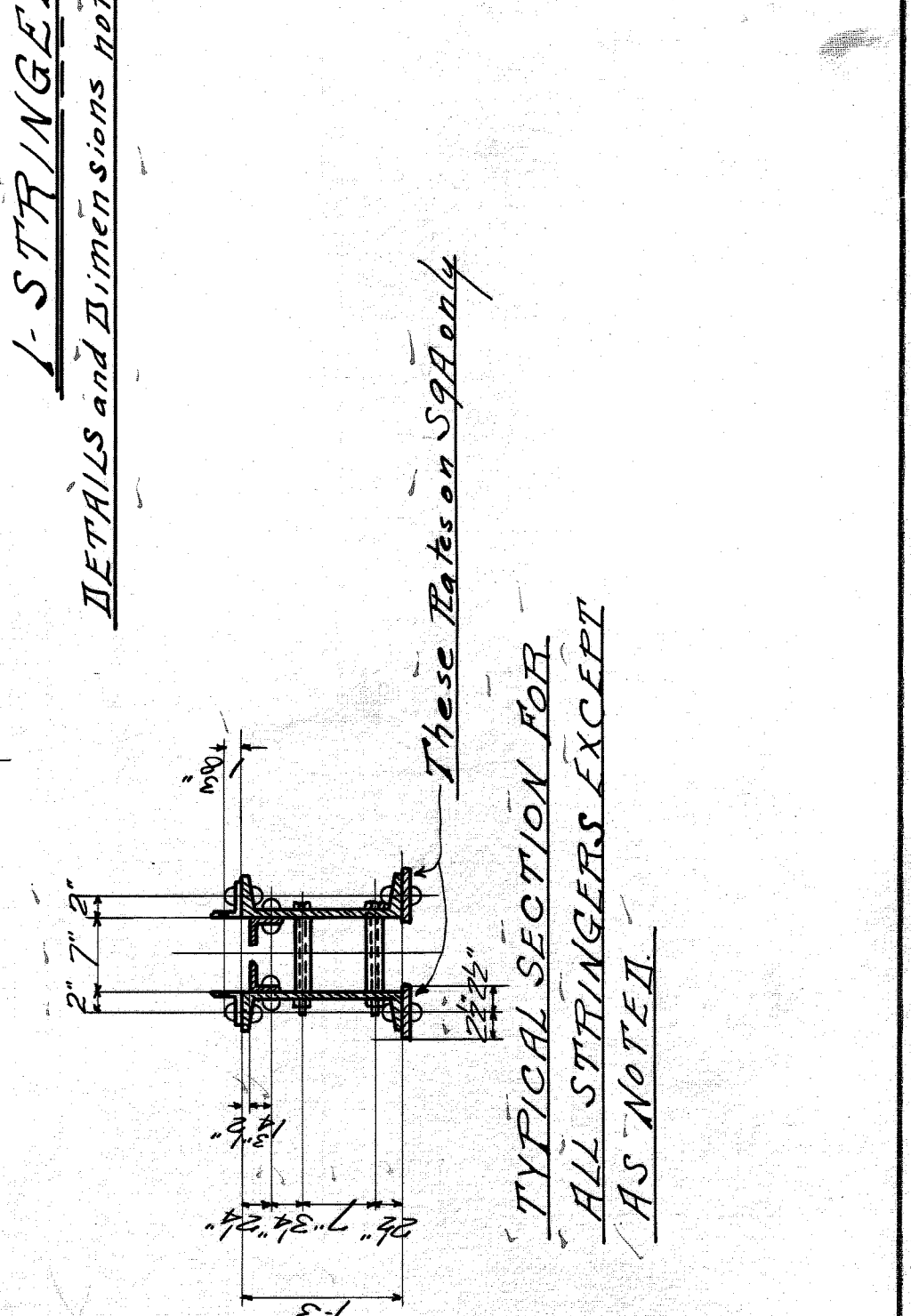
Summary of Parts

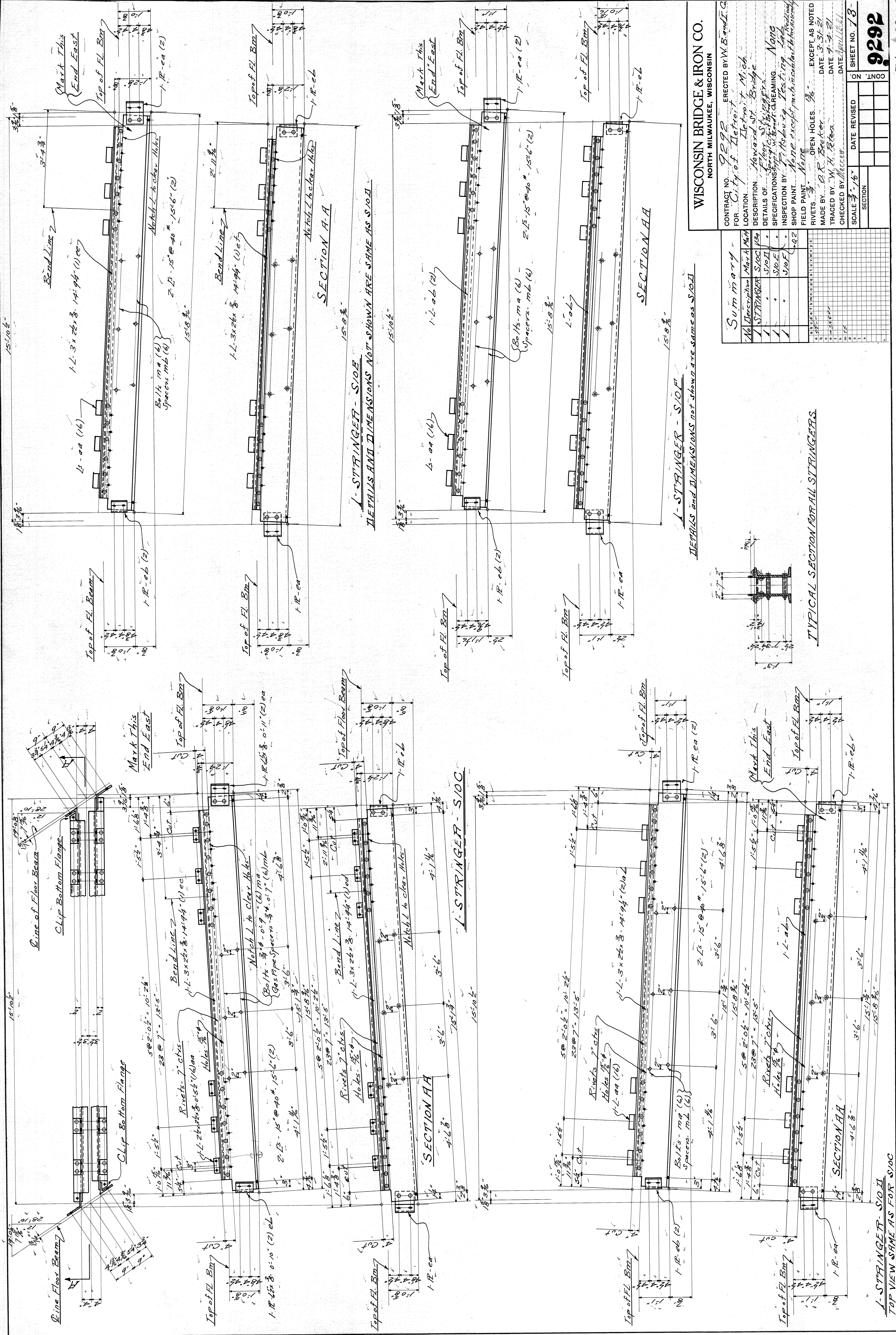
No.	Description	Mark	Qty
1	STRUTS	U3-U4	60
2	"	U4-U4	48
3	"	F3	"
4	"	E	"



WISCONSIN BRIDGE & IRON CO. NORTH MILWAUKEE, WISCONSIN	
CONTRACT NO. 9292	ERECTED BY W. Bandt Co.
FOR City of Detroit	LOCATION Detroit Mich.
DESCRIPTION Howard St. Bridge	DETAILS OF FLOOR STRINGERS
SPECIFICATIONS	INSPECTION BY T. H. S. T. Co. Inc. (None)
SHOP PAINT	FIELD PAINT
RIVETS	OPEN HOLES
MADE BY O. R. Becker	DATE 3-30-21
CHECKED BY W. H. Peters	DATE 4-2-21
CHECKED BY Morrow	DATE April 12-21
SCALE 3/8" = 1'-0"	DATE REVISED
SECTION	SHEET NO. 12

Summary	
No.	Description
1	STRINGER S9A (24)
1	" S10A "
1	" S10B "
THESE TESTS ON S9A ONLY TYPICAL SECTION FOR ALL STRINGERS EXCEPT AS NOTED	





WISCONSIN BRIDGE & IRON CO.
 NORTH MILWAUKEE, WISCONSIN

CONTRACT NO. 9292
 FOR City of Detroit

ERECTED BY W. B. and F. G. Detroit Mich.
 Location Howard St. Bridge

DESCRIPTION Floor Stringers
 DETAILS OF S10 I 134
 S10 I 1
 S10 I 1
 S10 I 1

INSPECTION BY: None
 SHOP PAINT: None
 FIELD PAINT: None

RIVETS: 7/8" OPEN HOLES: 1/8"
 MADE BY: O. F. Becker
 TRACED BY: W. H. Peters
 CHECKED BY: M. J. Green

DATE: 3-31-21
 DATE: 4-7-21
 DATE: April 22-21

EXCEPT AS NOTED

SCALE: 3/4" = 1'-0"

SHEET NO. 13

SECTION

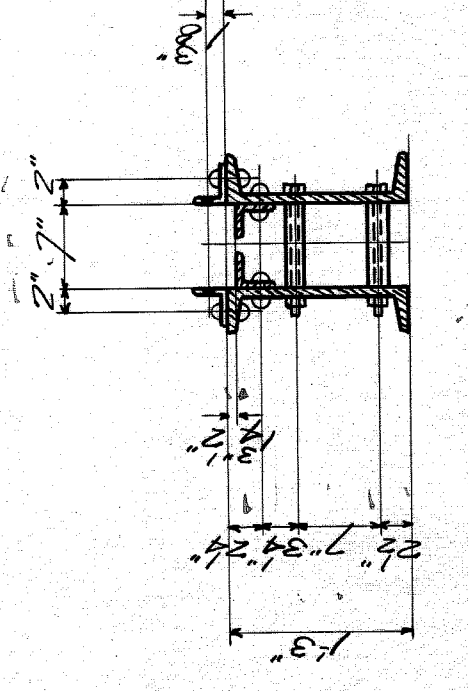
9292

File No 59-29

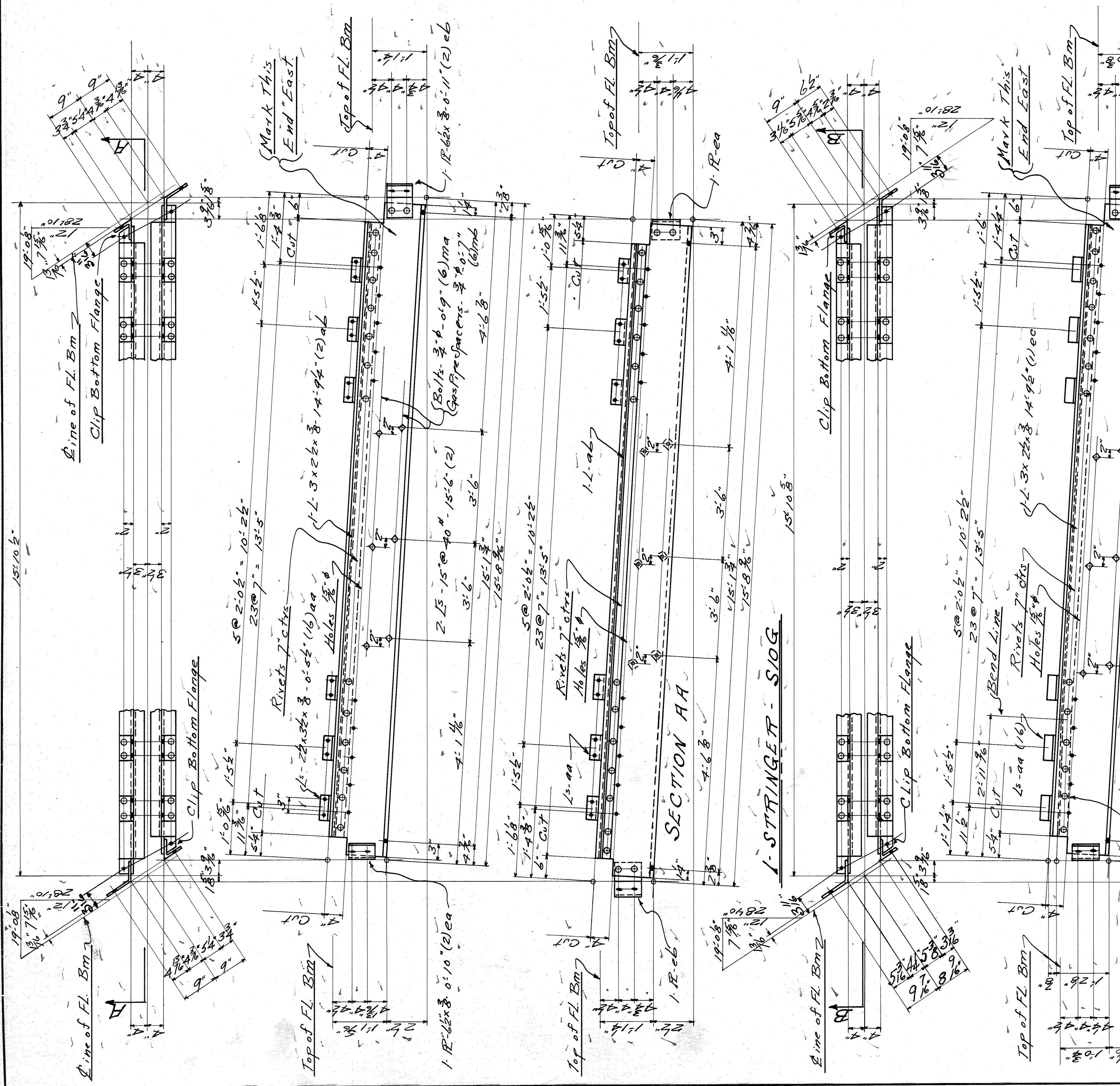
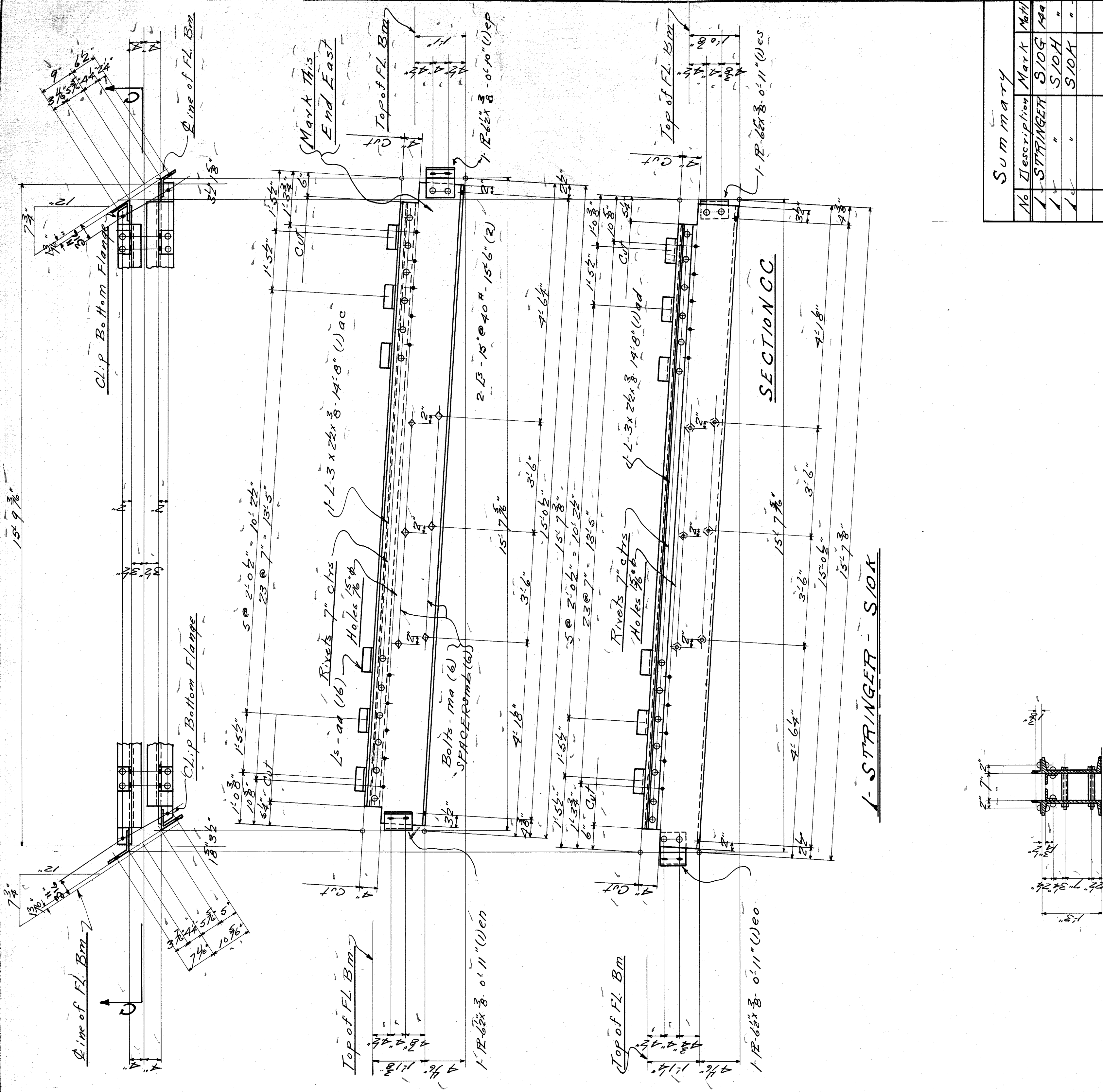
Summary

No.	Description	Material	Quantity
1	STRINGER	S10 I 134	1
1		S10 I 1	1
1		S10 I 1	1
1		S10 I 1	1

TYPICAL SECTION FOR ALL STRINGERS



1-STRINGER - S10 I
 TOP VIEW SAME AS FOR S10 I



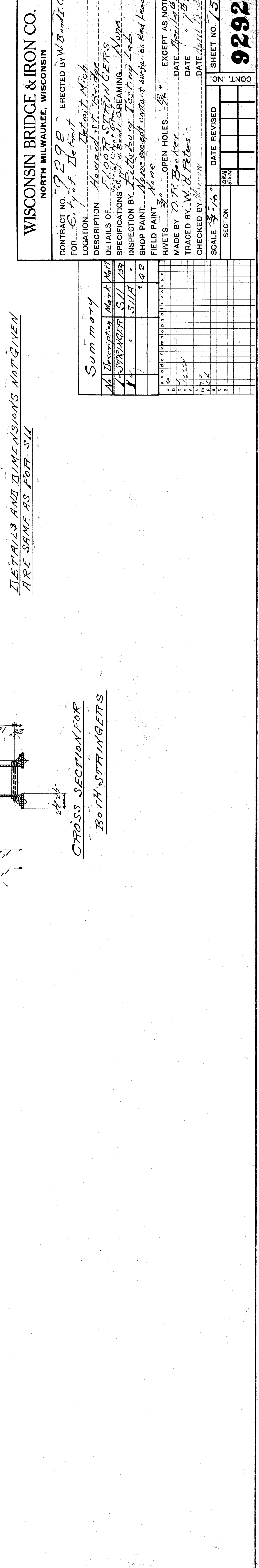
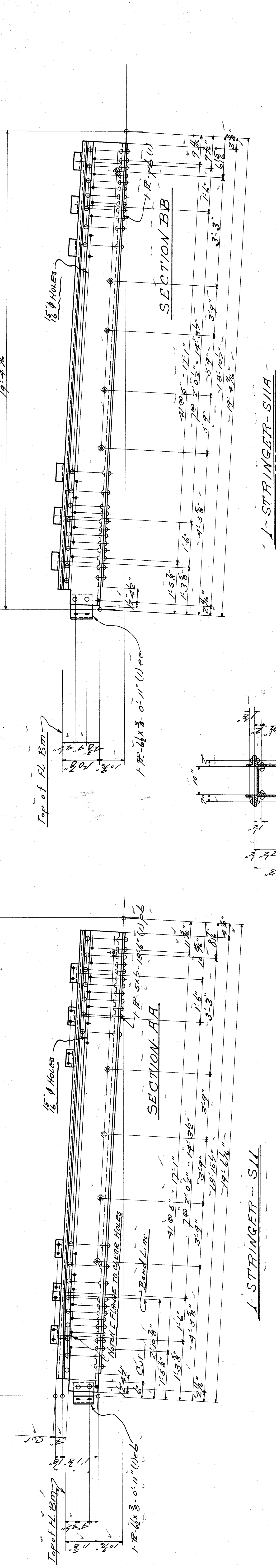
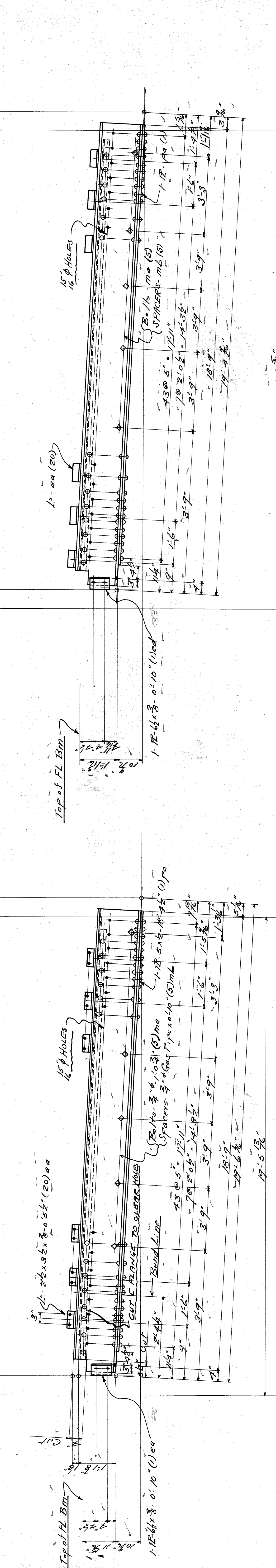
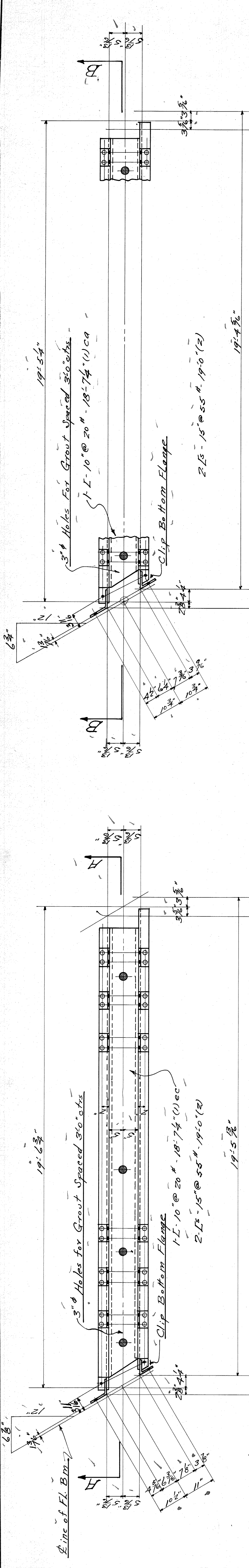
Summary			
No	Description	Mark	Qty
1	1-STRINGER	SIOG	1
1	1-STRINGER	SIOG	1

WISCONSIN BRIDGE & IRON CO.
 NORTH MILWAUKEE, WISCONSIN

CONTRACT NO. 9292
 ERCTED BY W. Brandt & Co.
 FOR City of Detroit
 LOCATION Detroit Mich.
 DESCRIPTION Howard St Bridge
 DETAILS OF FABRICATION REAMING NONE
 INSPECTION BY T. H. Sborg Testing Lab
 SHOP PAINT None except on faces of steel
 FIELD PAINT None
 RIVETS 7" OPEN HOLES 7/8"
 MADE BY C. F. Becker DATE 4-1-21
 TRACED BY W. H. Peters DATE 4-5-21
 CHECKED BY M. J. ... DATE April 13, 21

SCALE 3/16" = 1'-0"
 DATE REVISED
 SHEET NO. 17

TYPICAL SECTION FOR ALL STRINGERS.



WISCONSIN BRIDGE & IRON CO.
 NORTH MILWAUKEE, WISCONSIN

CONTRACT NO. 9292 - ERCTED BY W. Bend. I. G.
 FOR City of Detroit

LOCATION Howard St. Bridge
 Detroit, Mich.

DESCRIPTION FLOOR STRINGERS
 DETAILS OF STRINGERS None
 SPECIFICATIONS None
 INSPECTION BY F. H. B. Testing Lab.
 SHOP PAINT None except contact surface on bed lead
 FIELD PAINT None

RIVETS - EXCEPT AS NOTED
 MADE BY O. F. Becker DATE April 12, 21
 TRACED BY W. H. B. DATE 7-29-21
 CHECKED BY DATE April 12, 21

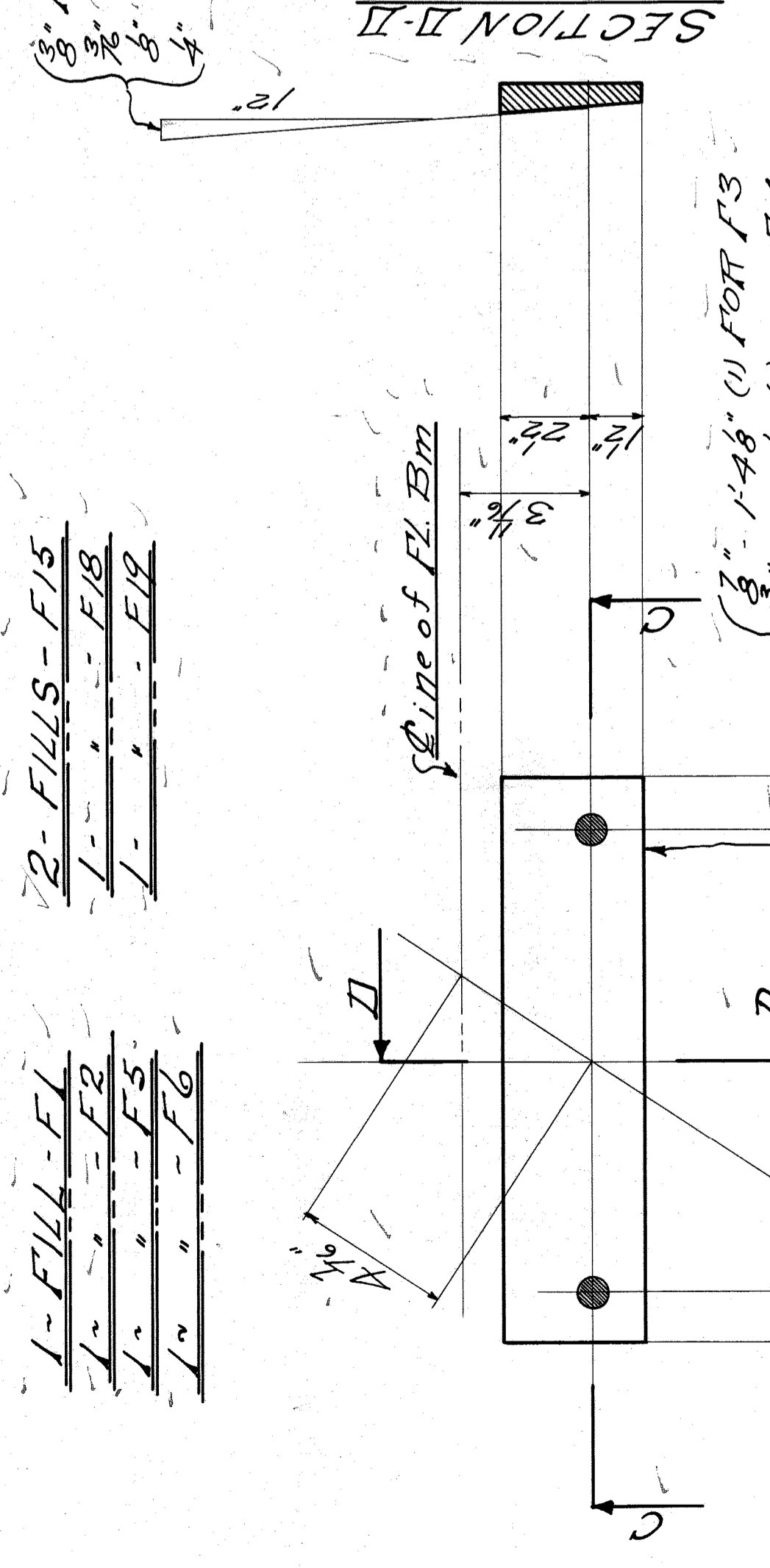
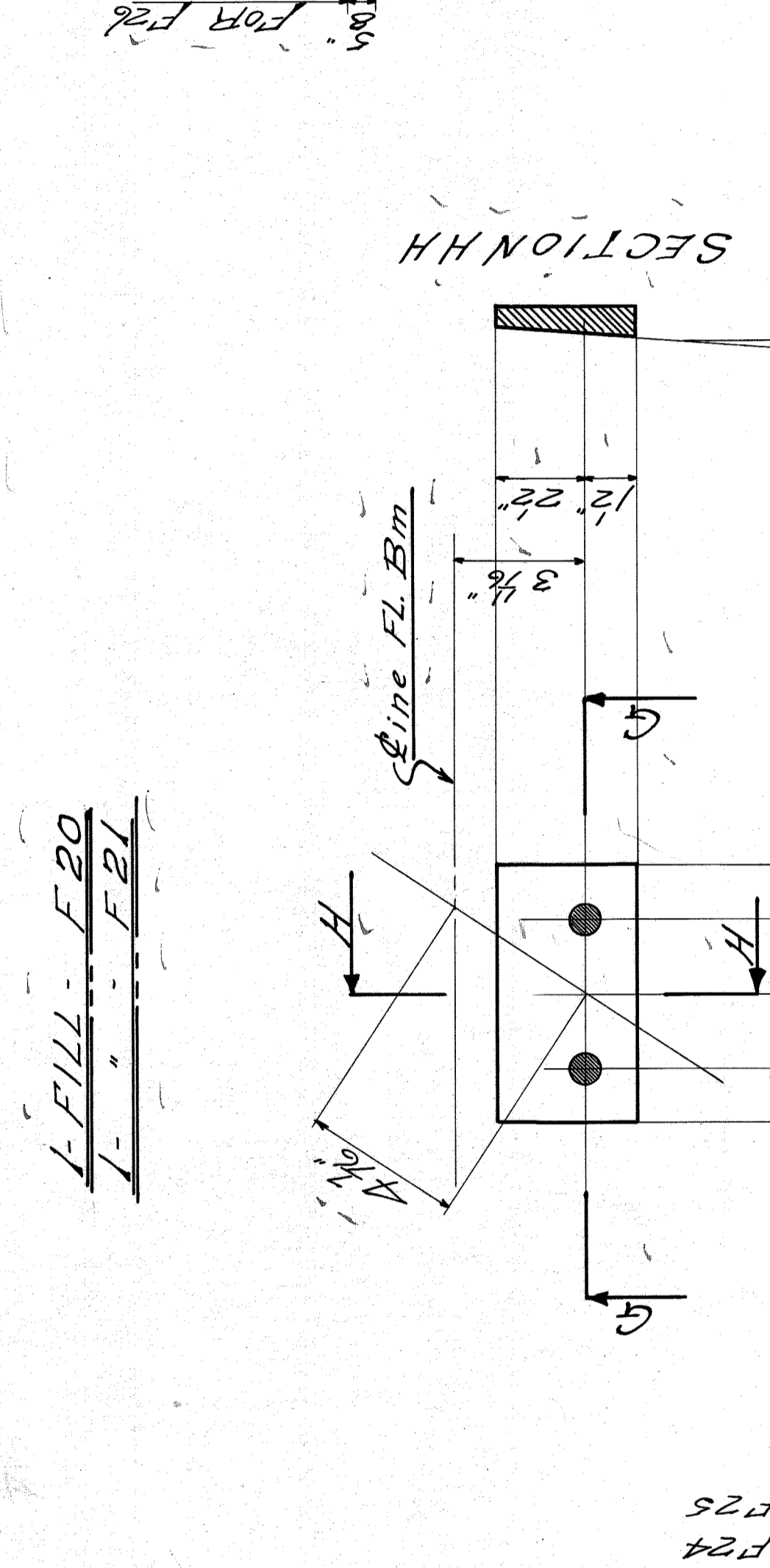
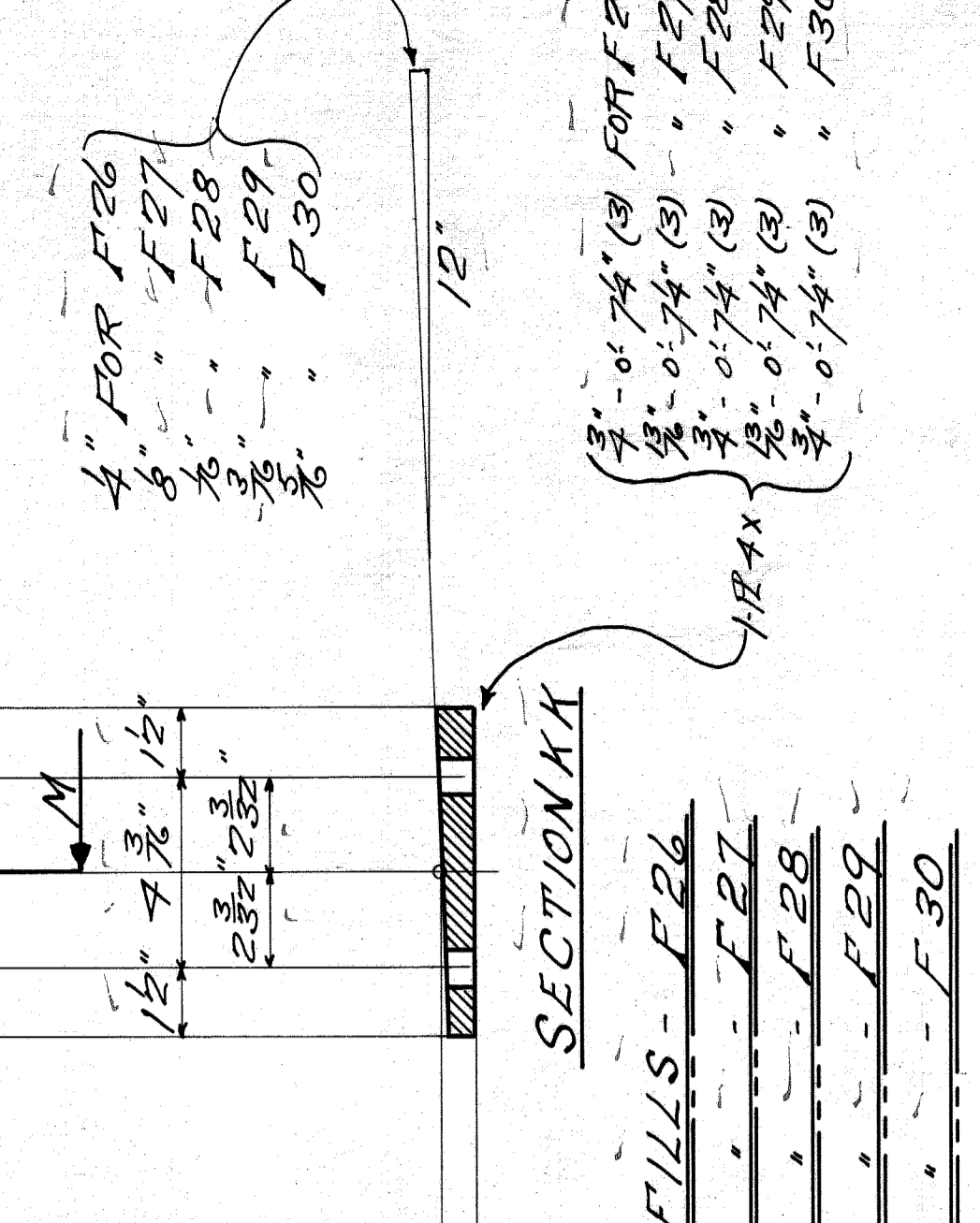
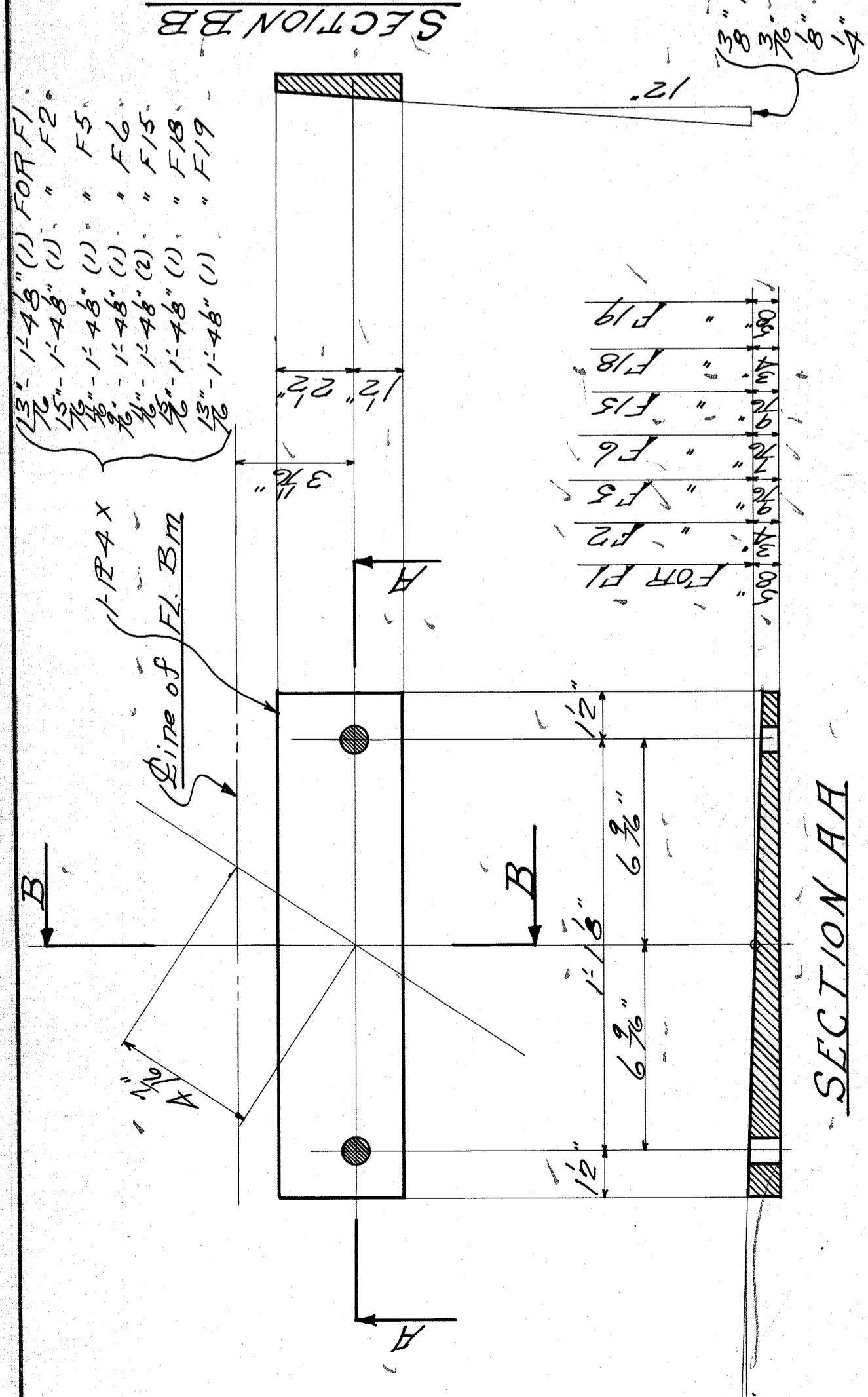
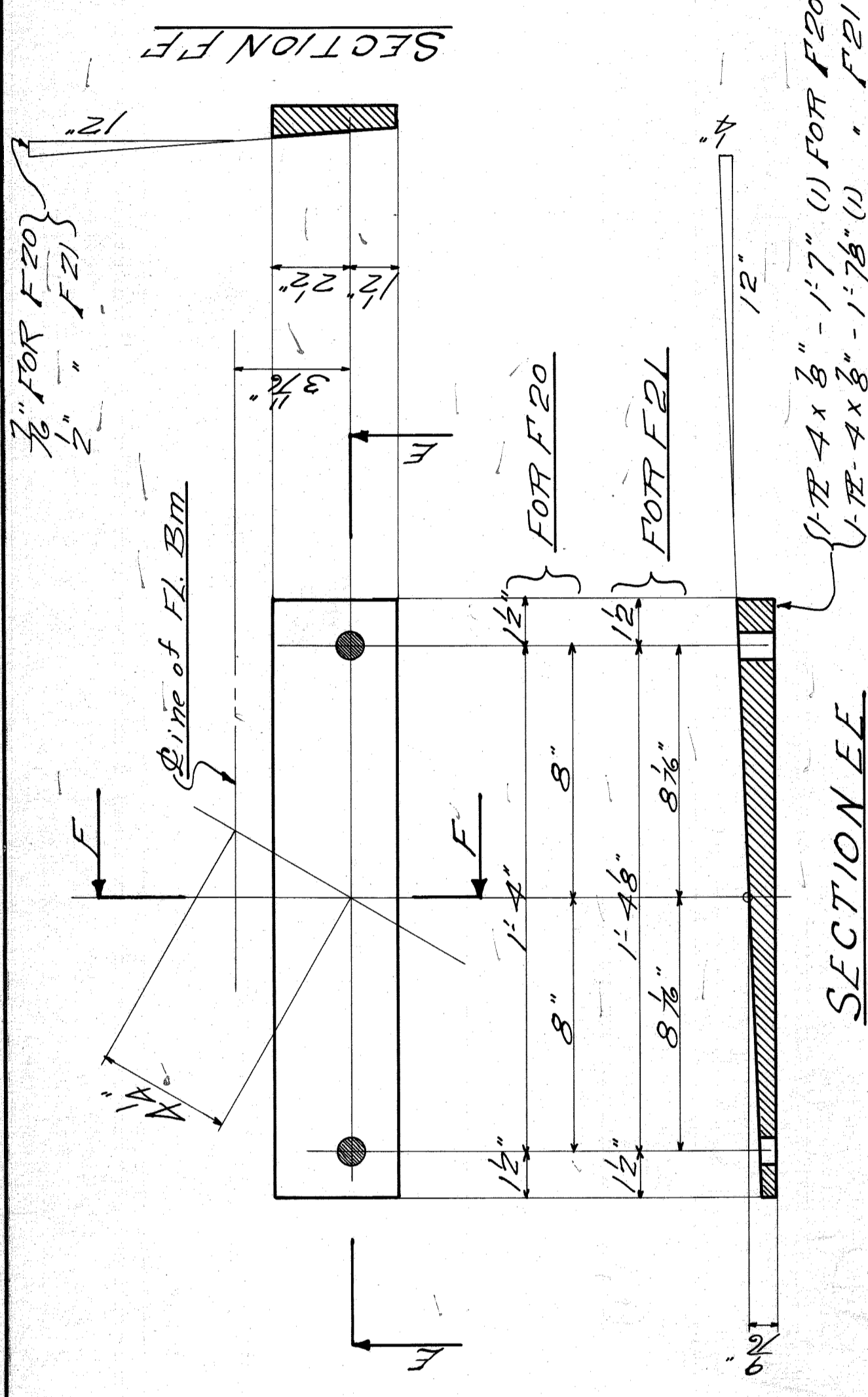
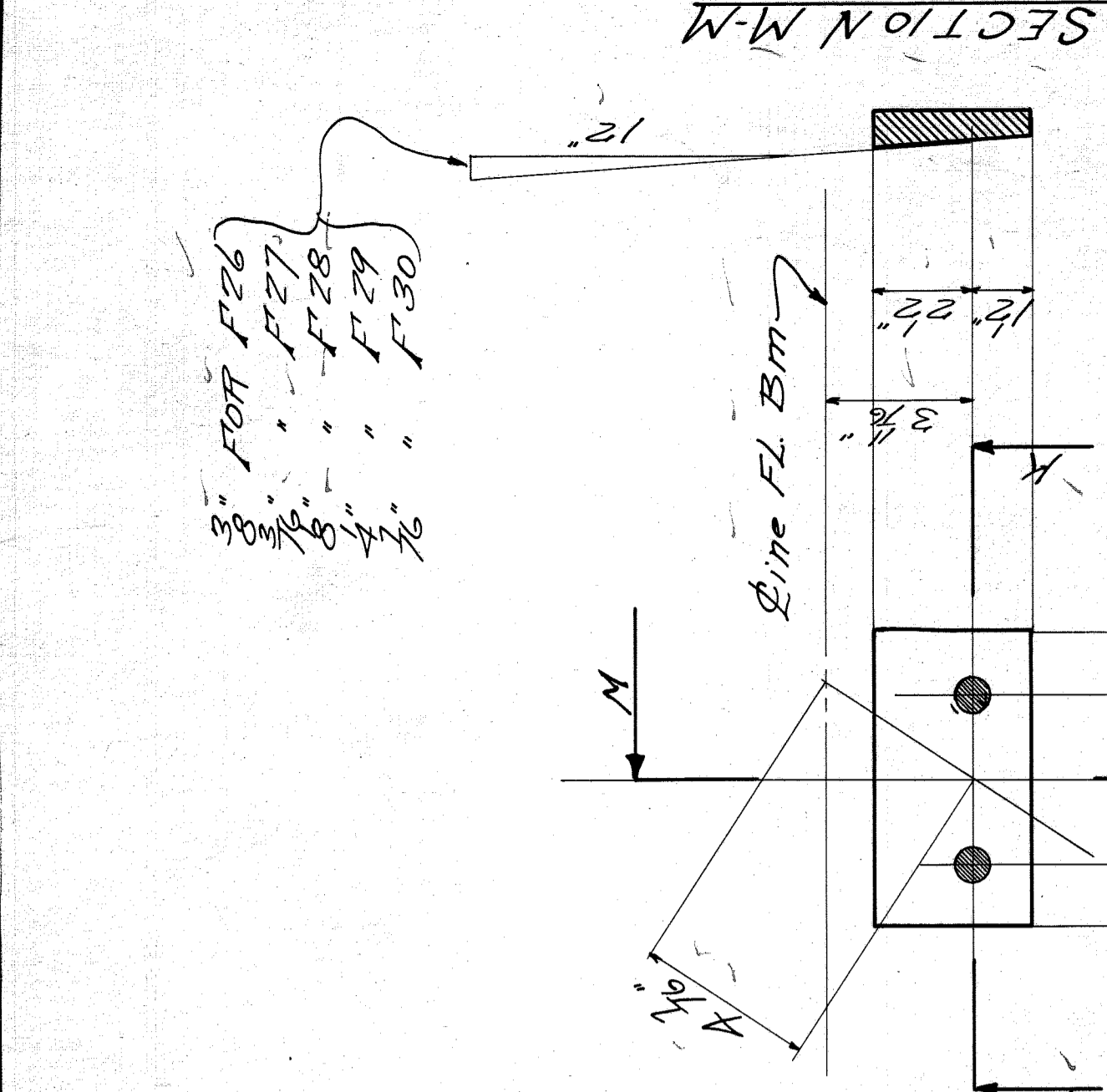
SCALE 1/4" = 1'-0" DATE REVISED SHEET NO. 15

Summary

Description	Mark	Material
STRINGER	S11	152
STRINGER	S11A	192

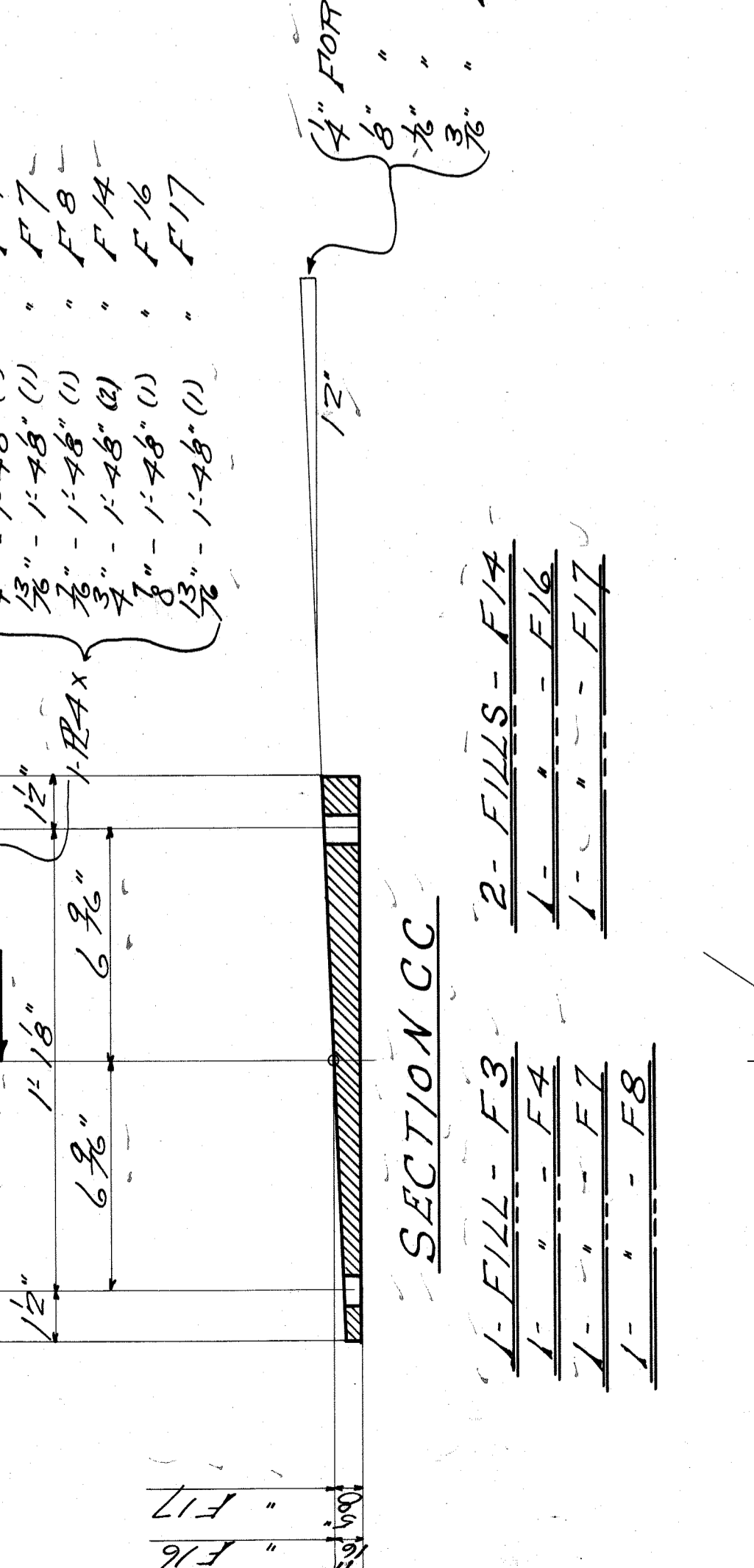
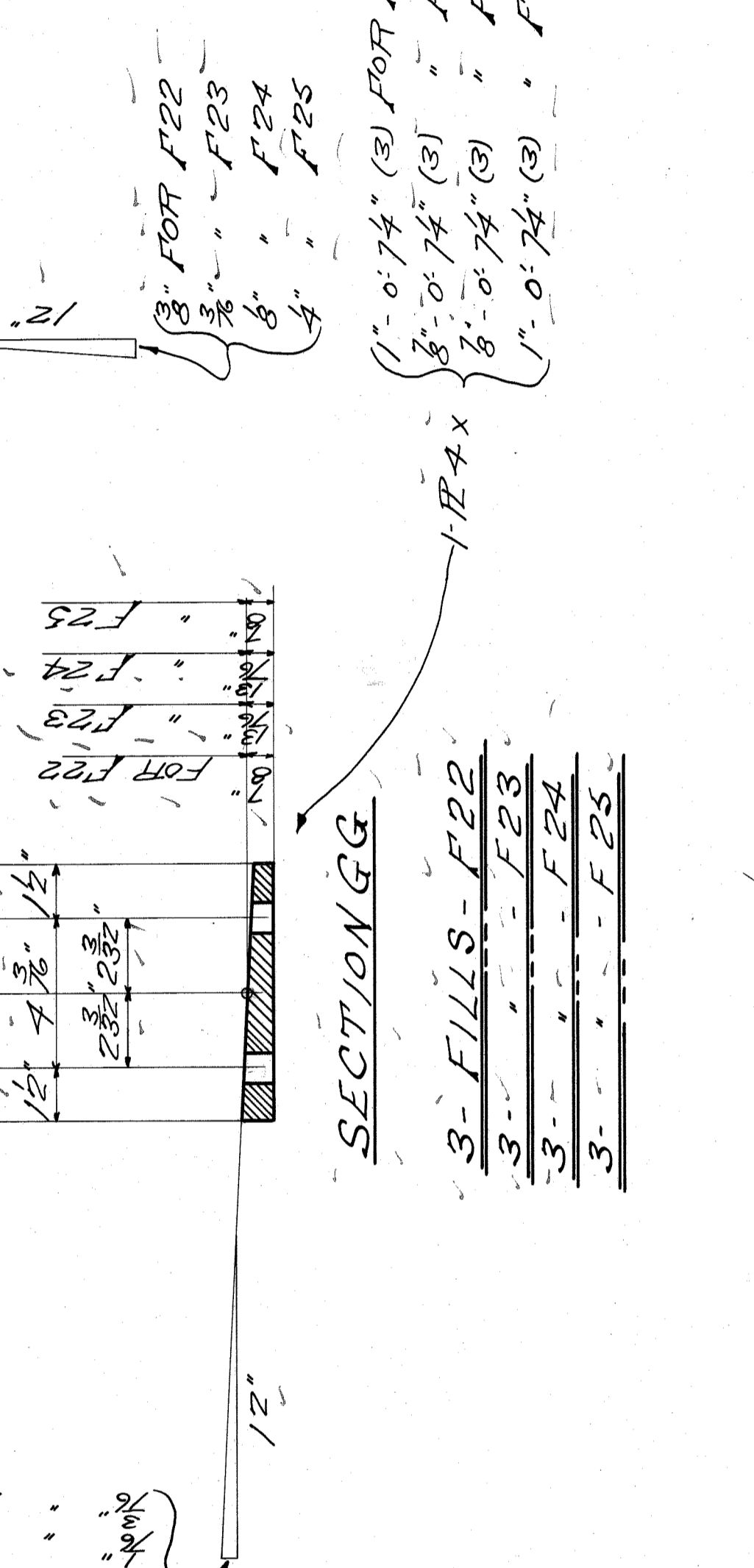
1-STRINGER-S11A
 DETAILS AND DIMENSIONS NOT GIVEN
 ARE SAME AS FOR S11

CROSS SECTION FOR
 BOTH STRINGERS



Summary

No	Description	Max #	Min #	Max	Min
1	FILL	F1	164	1	164
1	"	F2	"	"	"
1	"	F3	"	"	"
1	"	F4	"	"	"
1	"	F5	"	"	"
1	"	F6	"	"	"
1	"	F7	"	"	"
1	"	F8	"	"	"
1	"	F9	"	"	"
1	"	F10	"	"	"
1	"	F11	"	"	"
1	"	F12	"	"	"
1	"	F13	"	"	"
1	"	F14	"	"	"
1	"	F15	"	"	"
1	"	F16	"	"	"
1	"	F17	"	"	"



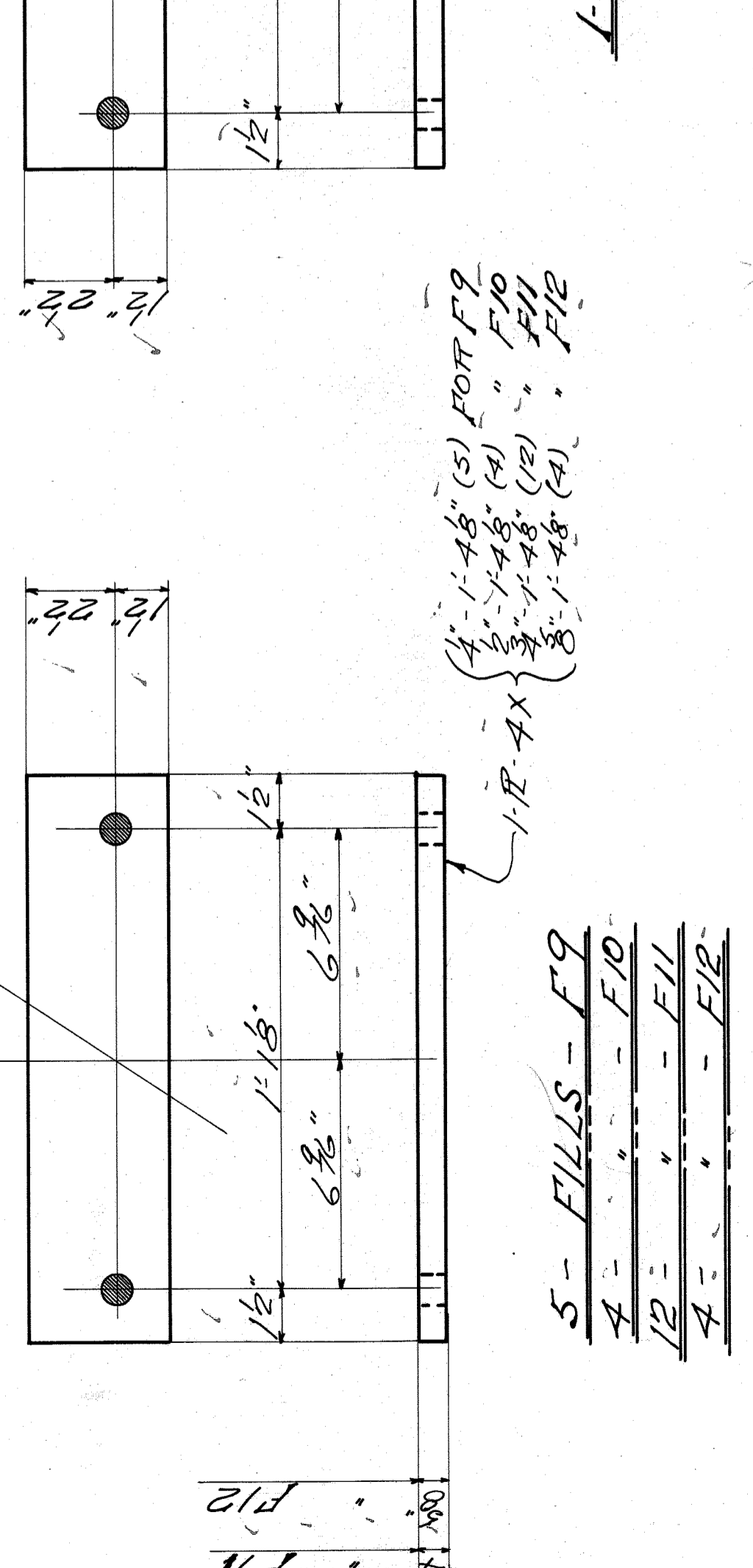
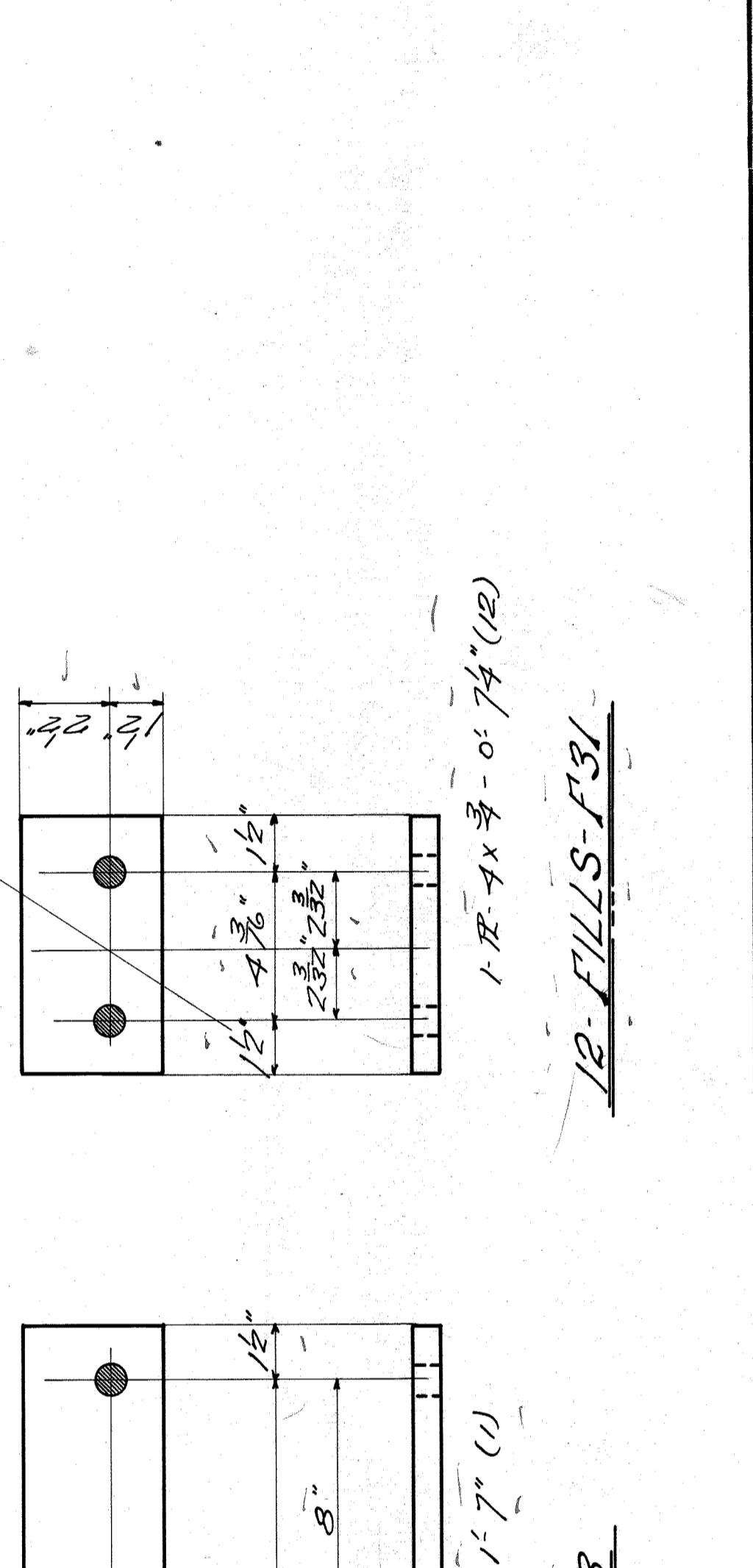
WISCONSIN BRIDGE & IRON CO.
NORTH MILWAUKEE, WISCONSIN

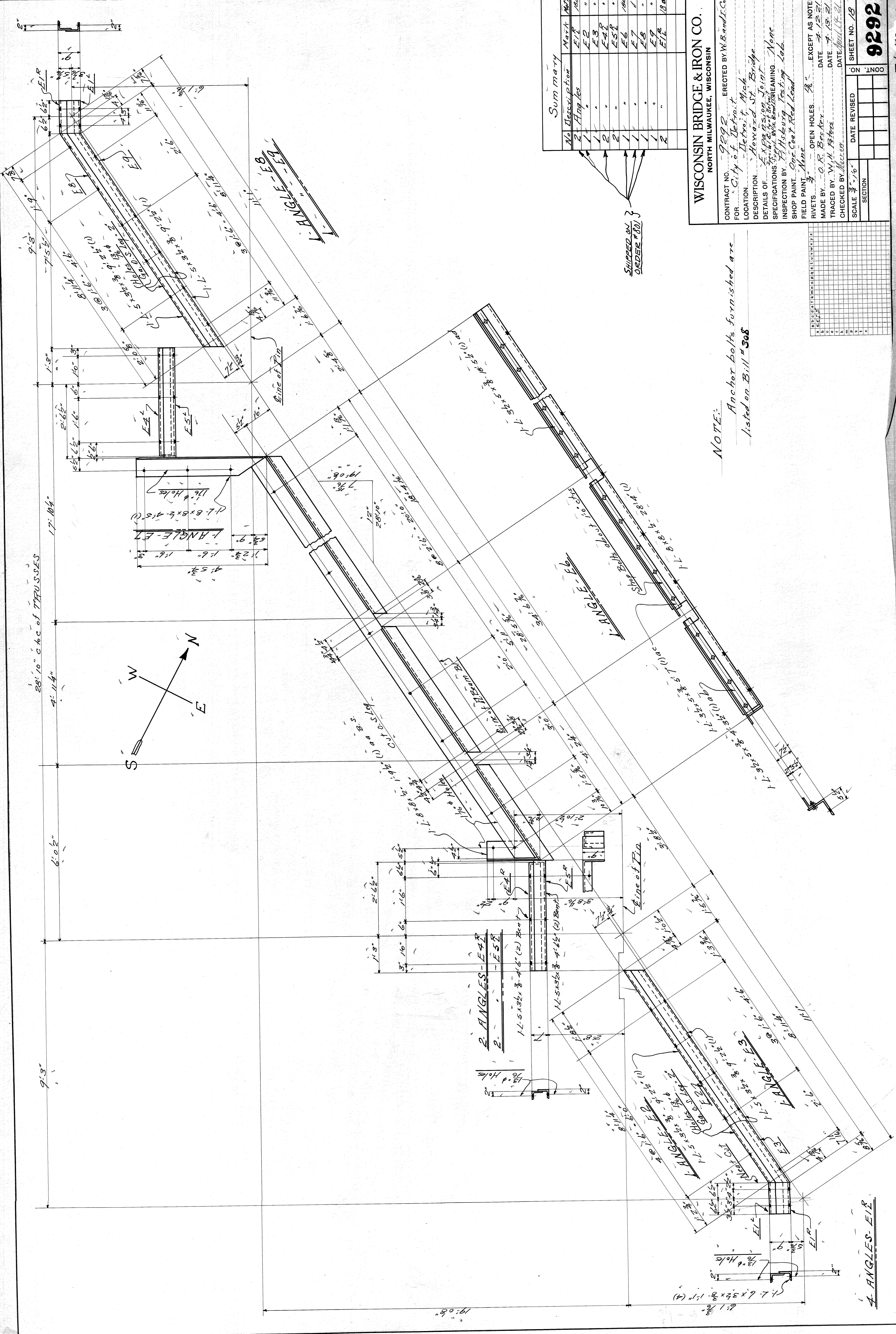
CONTRACT NO. 9292
ERECTED BY W. Bendig.
FOR City of Detroit, Mich.

LOCATION: Howard St. Bridge
DETAILS OF: Bevels, Edges, Fillets
SPECIFICATIONS: City of Detroit, Wis. and I.C. REAMING
INSPECTION BY: Fitts Long Feisting Lab.
SHOP PAINT: None
FIELD PAINT: None

RIVETS: OPEN HOLES 3/8"
EXCEPT AS NOTED
MADE BY: O.R. Beecher DATE: April 1921
TRACED BY: W.H. Peters DATE: 8-21-21
CHECKED BY: W.H. Peters DATE: April 1921

SCALE: 3/4" = 1'-0"
SECTION: ON LINE
DATE REVISED: SHEET NO. 16





Summary

No.	Description	Mark	Qty
1	Angles	E1R	10a
2	"	E2R	"
3	"	E3R	"
4	"	E4R	"
5	"	E5R	"
6	"	E6R	10a
7	"	E7R	"
8	"	E8R	"
9	"	E9R	"
10	"	E10R	10a

WISCONSIN BRIDGE & IRON CO.
 NORTH MILWAUKEE, WISCONSIN

CONTRACT NO. 9292 ERECTED BY W.B. & I.C.
 FOR City of Detroit
 LOCATION Detroit, Mich.
 DESCRIPTION Howard St. Bridge
 DETAILS OF Construction Joint
 SPECIFICATIONS See Specifications for Steelwork
 INSPECTION BY T. H. H. Testing Lab.
 SHOP PAINT One Coat Red Lead
 FIELD PAINT None

RIVETS: OPEN HOLES 3/8"
 MADE BY O.K. Bessley DATE 4-13-21
 TRACED BY W.H. Peters DATE 4-13-21
 CHECKED BY M. J. M. DATE 4-13-21

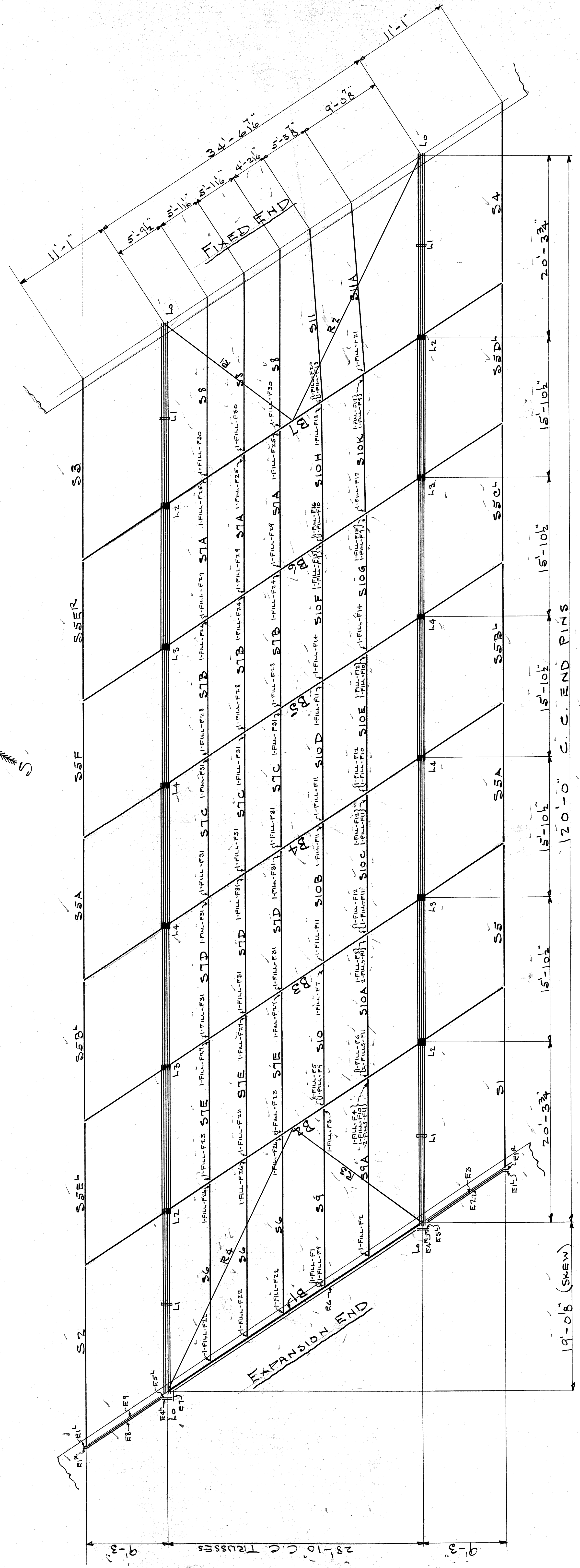
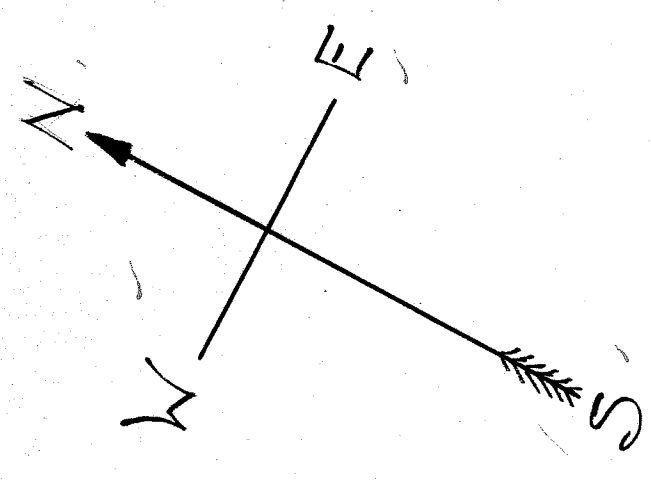
SCALE 3/4" = 1'-0"
 SHEET NO. 18
 SECTION

NOTE:
 Anchor bolts furnished are listed on Bill # 308

SHIPPED ON ORDER # 801

A	B	C	D	E	F	G	H	I	J	K	L	M	N	O	P	Q	R	S	T	U	V	W	X	Y	Z
---	---	---	---	---	---	---	---	---	---	---	---	---	---	---	---	---	---	---	---	---	---	---	---	---	---

A ANGLES-E1R



PLAN OF FLOOR SYSTEM

WISCONSIN BRIDGE & IRON CO.
 NORTH MILWAUKEE, WISCONSIN

CONTRACT NO. 9292 - ERECTED BY W.B.I.C.O.
 FOR CITY OF DETROIT
 LOCATION DETROIT MICH.
 DESCRIPTION HOWARD ST BRIDGE
 DETAILS OF ERECTION PLAN FLOOR SYSTEM

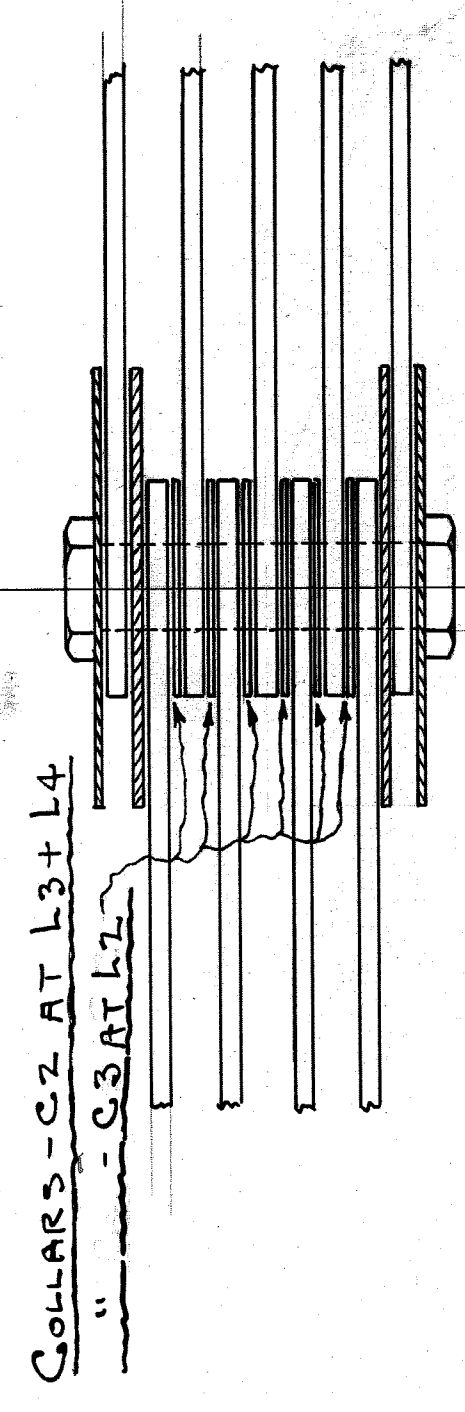
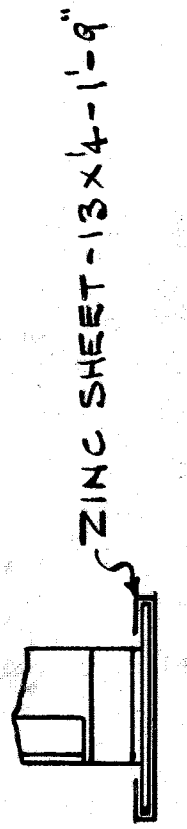
INSPECTION BY REAMING
 SHOP PAINT
 FIELD PAINT

RIVETS OPEN HOLES EXCEPT AS NOTED
 MADE BY O.R. BECKER DATE 4-6-21
 TRACED BY DATE
 CHECKED BY Muzzey DATE April 14-21

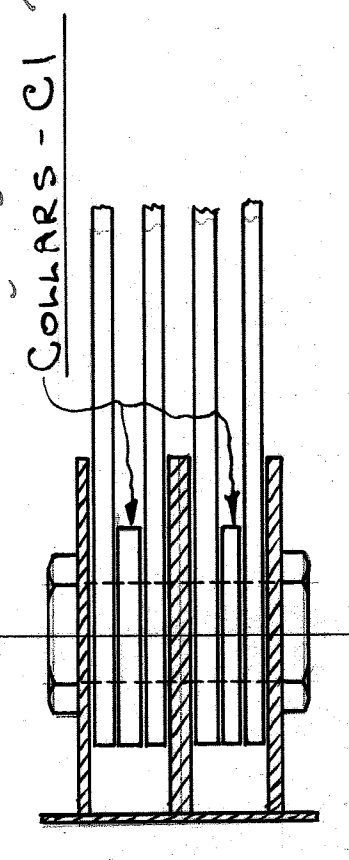
SCALE 3/4" = 1'-0"
 SECTION

DATE REVISED
 SHEET NO. E 3

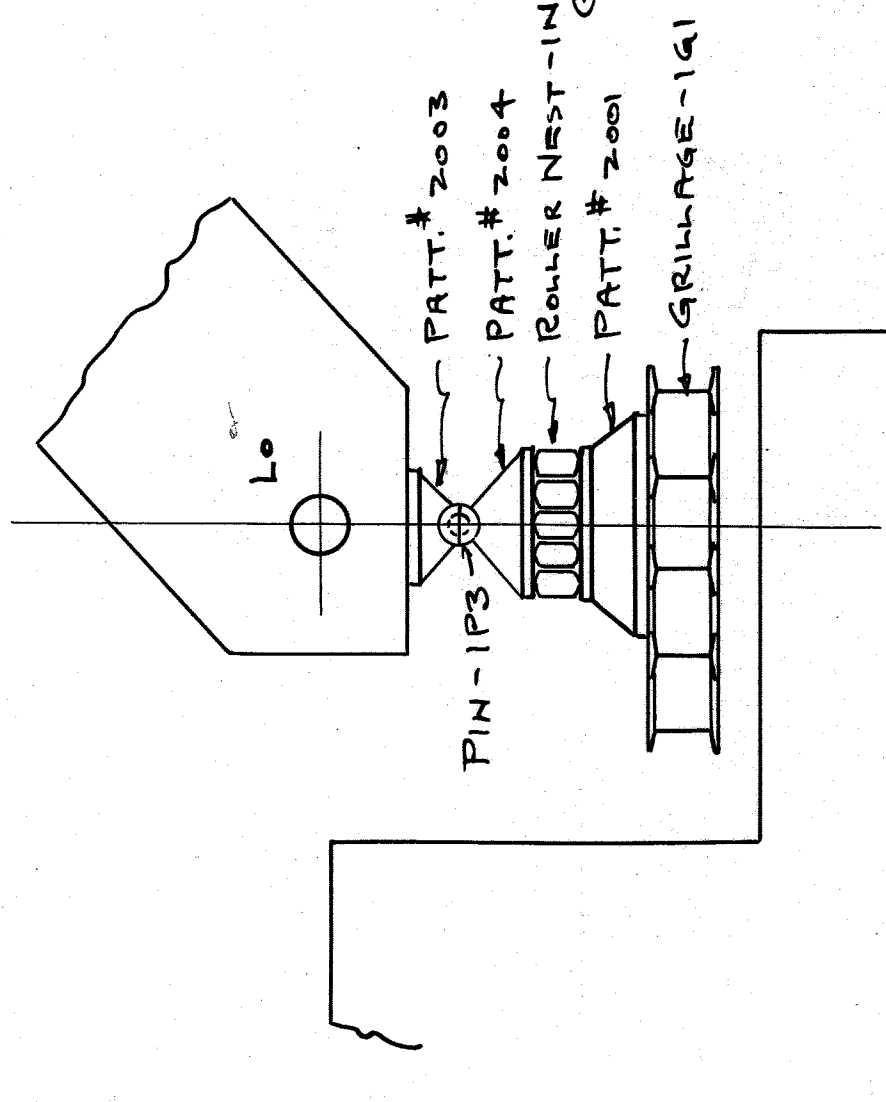
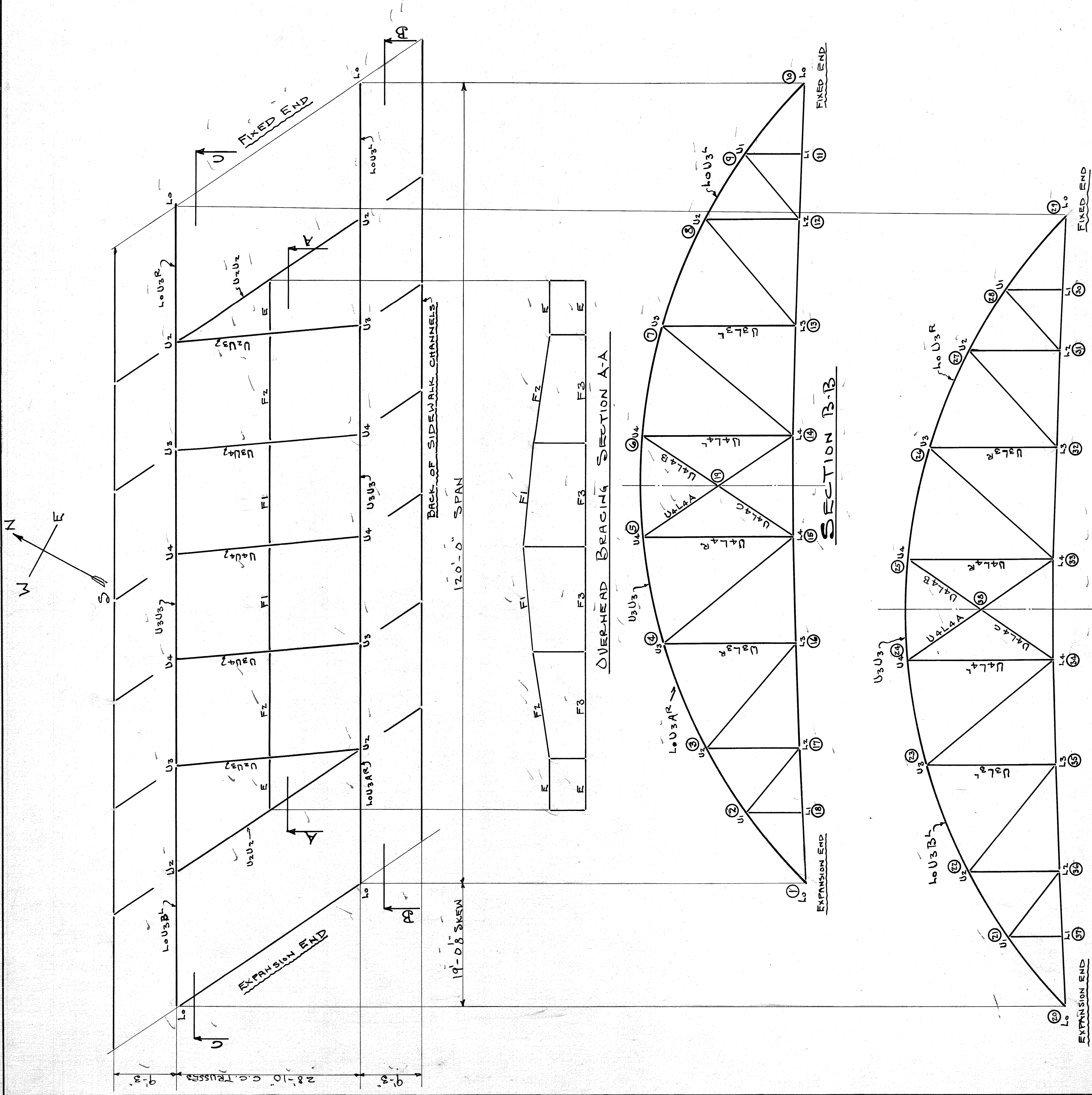
NOTE TO ERECTORS:-
 BEVEL FILLERS FOR ALL STRINGERS TO BE SO
 PLACED THAT STRINGERS ARE LEVEL TRANS-
 VERSELY.
 BEFORE ERECTING CURB CHANNELS "S1" AND "S2"
 ATTACH ZINC SHEETS BY BENDING AS PER SKETCH.



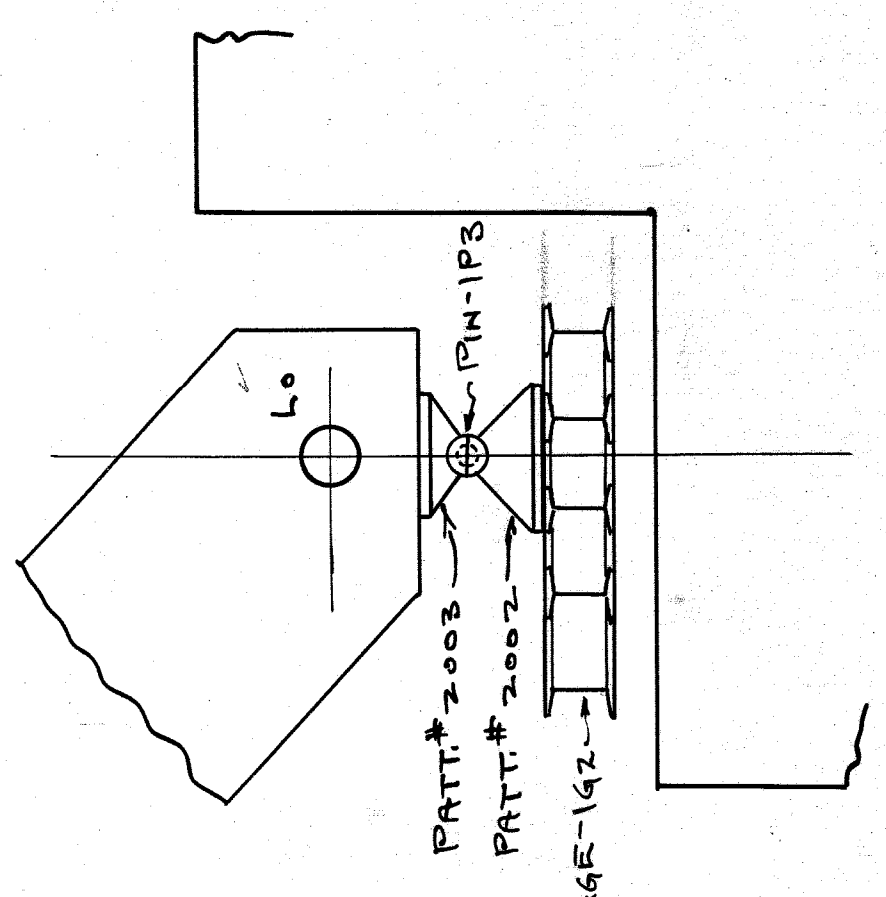
PACKING ON 7" DIAM. PINS
 AT POINTS L2-L3-L4



PACKING ON 8" DIAM. PINS
 AT POINT L1



DETAIL OF SHOE
EXPANSION END



DETAIL OF SHOE
FIXED END

NOTE TO ERECTOR:-
MATCH MARKS ARE SHOWN IN SMALL CIRCLES

WISCONSIN BRIDGE & IRON CO.
NORTH MILWAUKEE, WISCONSIN

CONTRACT NO. 9292
ERECTED BY M.B.F.I.CO.
FOR CITY OF DETROIT
LOCATION DETROIT, MICH.
DESCRIPTION HOWARD STREET BRIDGE
DETAILS OF ERECTION PLAN TRUSSES

INSPECTION BY
FIELD PAINT
RIVETS OPEN HOLES EXCEPT AS NOTED
MADE BY O.R. BREKERS DATE 4-13-21
TRACED BY DATE
CHECKED BY M. K. WILSON DATE April 14 21

SCALE SECTION DATE REVISED SHEET NO. E 4

9292