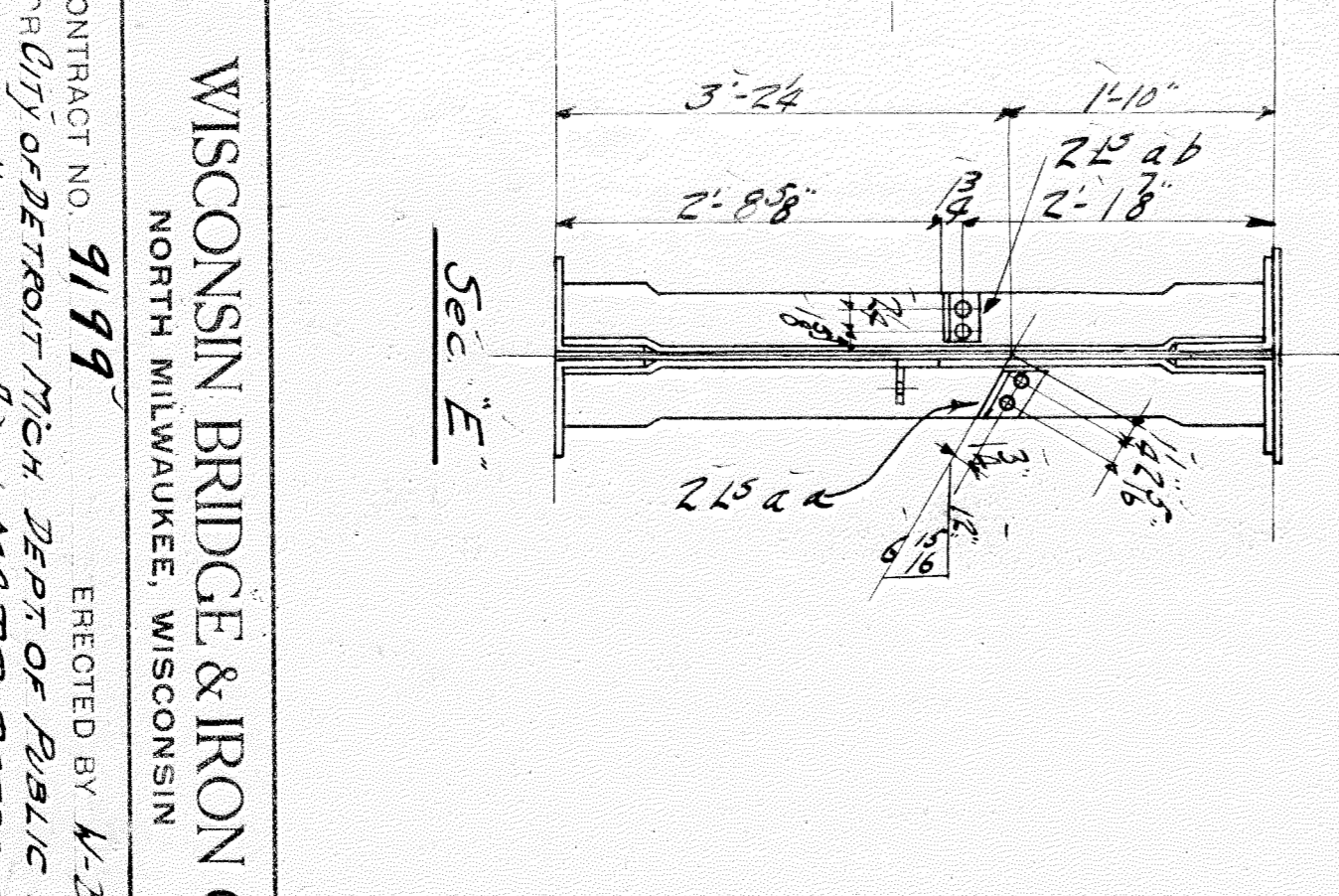
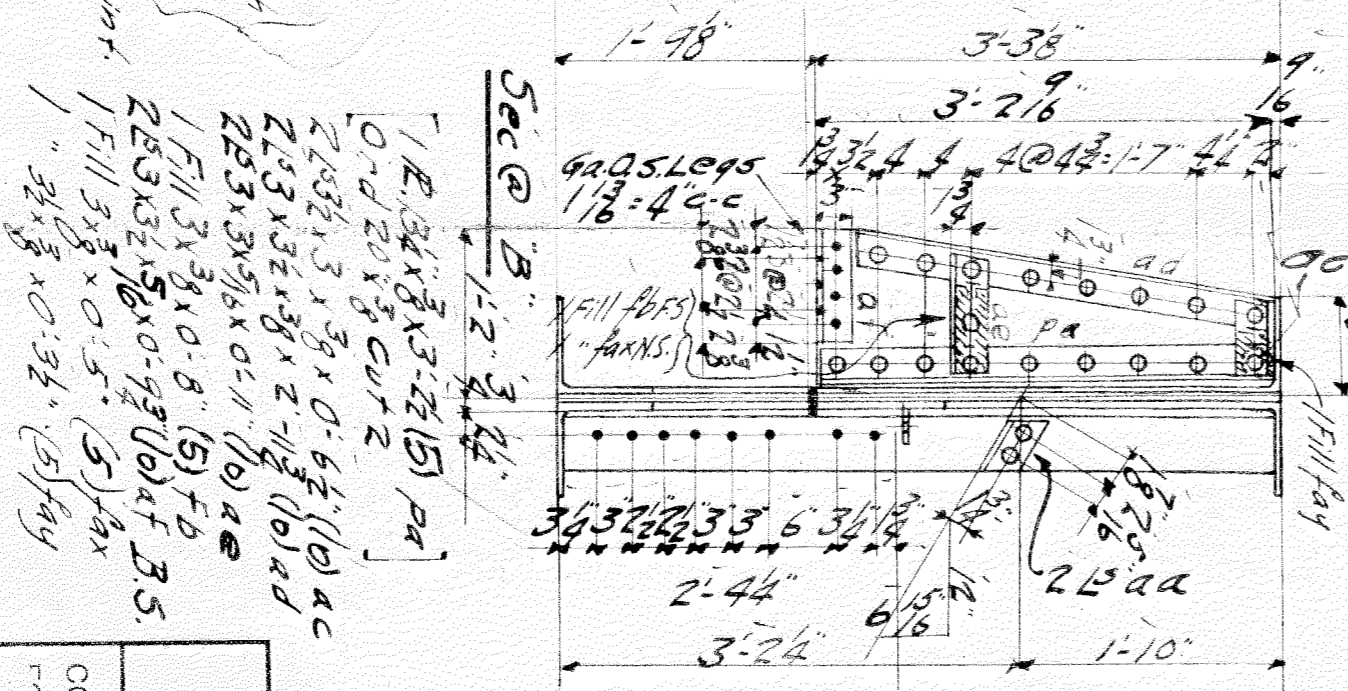
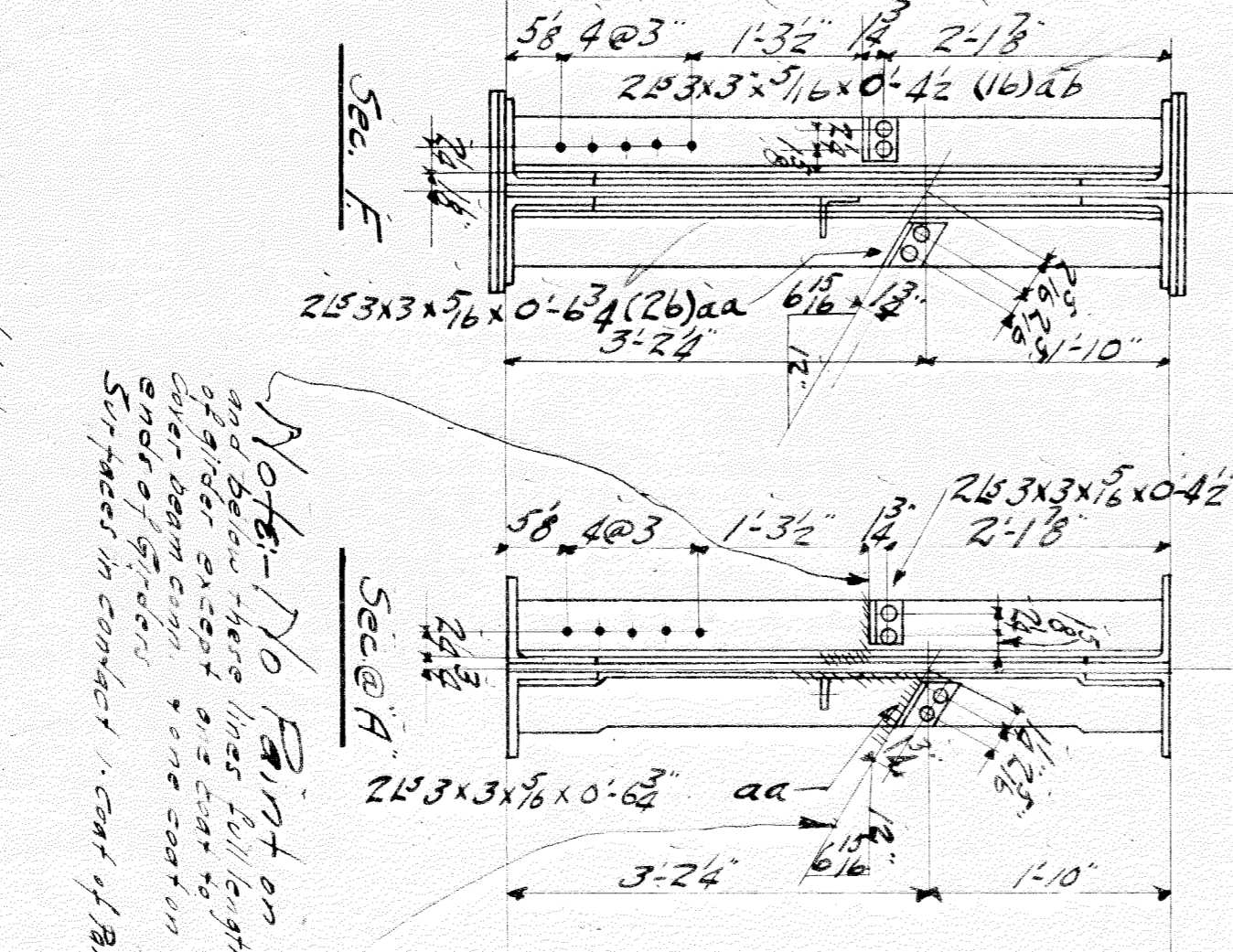
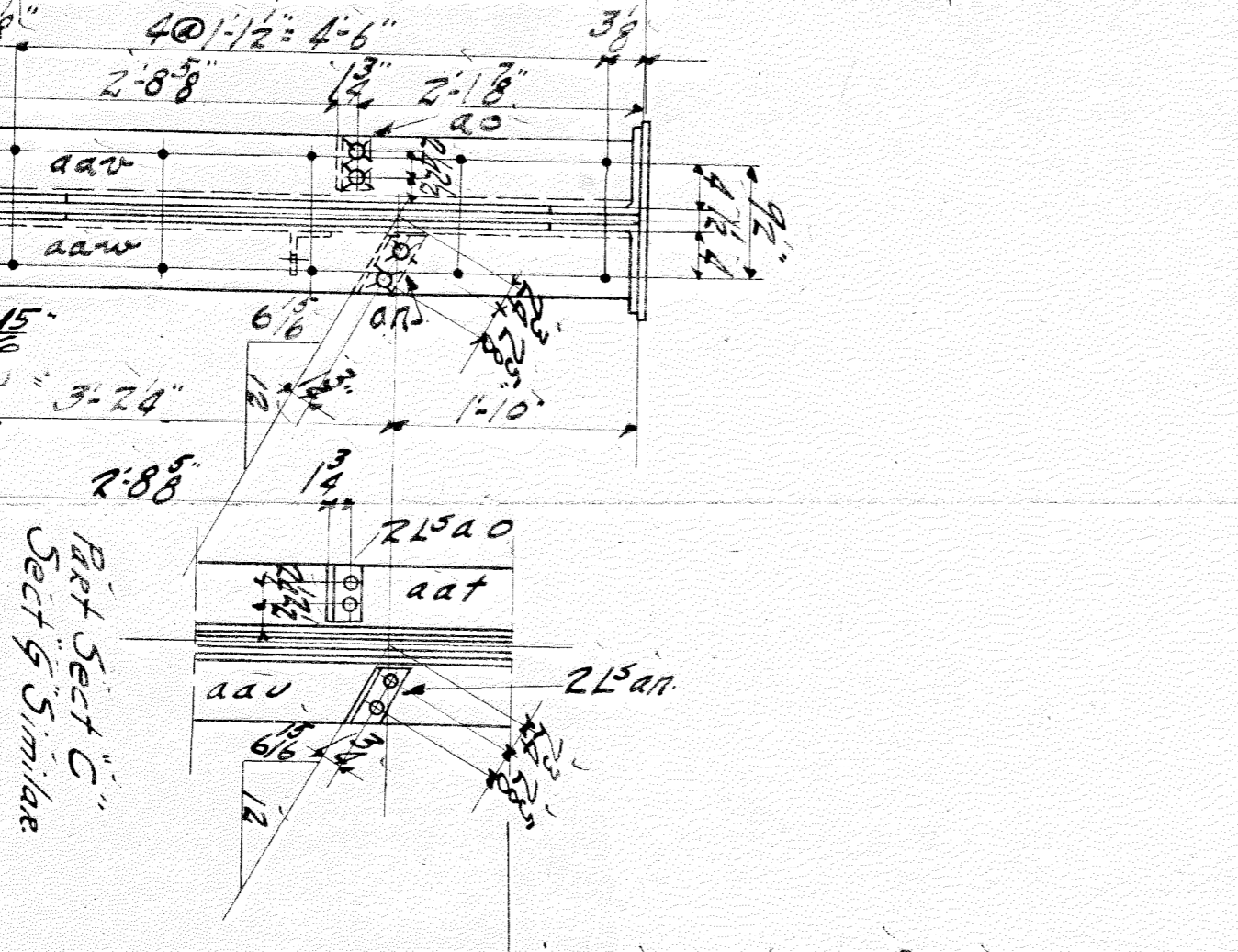
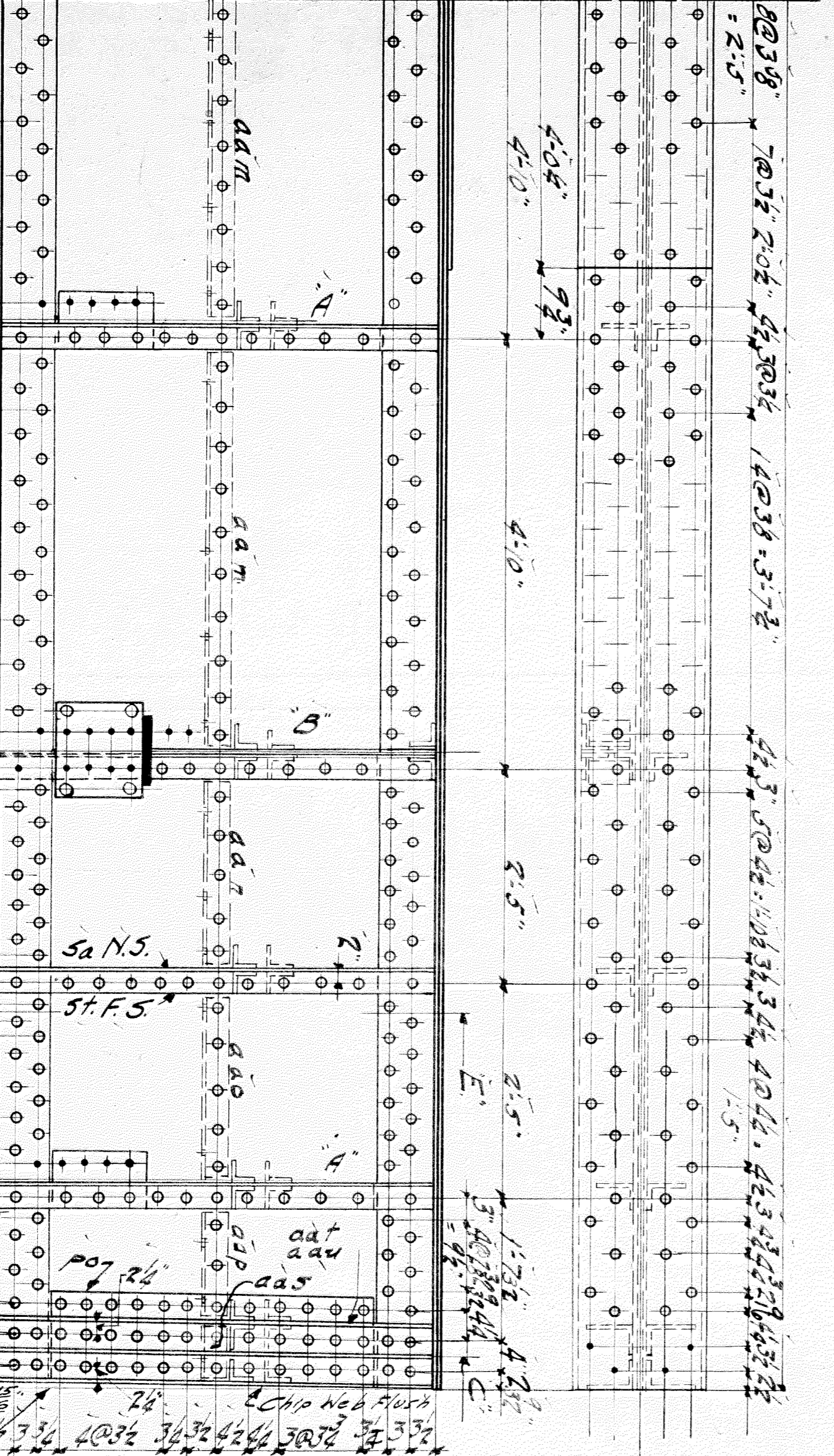


ONE GIRDER 965
CAMBER 5



Note:
1. All stiffeners to bear on bottom flg. Ls.
2. Stiffeners in contact w/ cast form.
3. All floor beam connections subpunched.
4. Small and reamed to size.

2Pb 12x6x3-82 (2) ad
1L 4x6x3x 4-1/2 (0) ad w/ NS
1L do. x 4-1/2 (0) ad w/ FS
1L do. x 4-1/2 (0) ad w/ NS
do. x 4-1/2 (0) ad w/ FS

WISCONSIN BRIDGE & IRON CO.			
NORTH MILWAUKEE WISCONSIN			
CONTRACT NO. 9199	EXECUTED BY K. E. D. CO.		
LOCATION WENONTA HIE & W. C. E. DETROIT			
DESCRIPTION Highway Bridge			
DETAILS OF Stiffeners	SPECIFICATIONS Mich. State Highway Com.		
INSPECTION BY PT. STEUBEN, TESTING LAB.	SHOP PAINT Coat Red Lead		
FIELD PAINT By others	FIBERS OPEN HOLES		
MADE BY W. L. STANLEY	EXPERT AS NOTED		
CHECKED BY P. C. HOUSE	DATE 7-6-30		
SCALE	DATE REVISED	SHEET NO. 9	
9199			