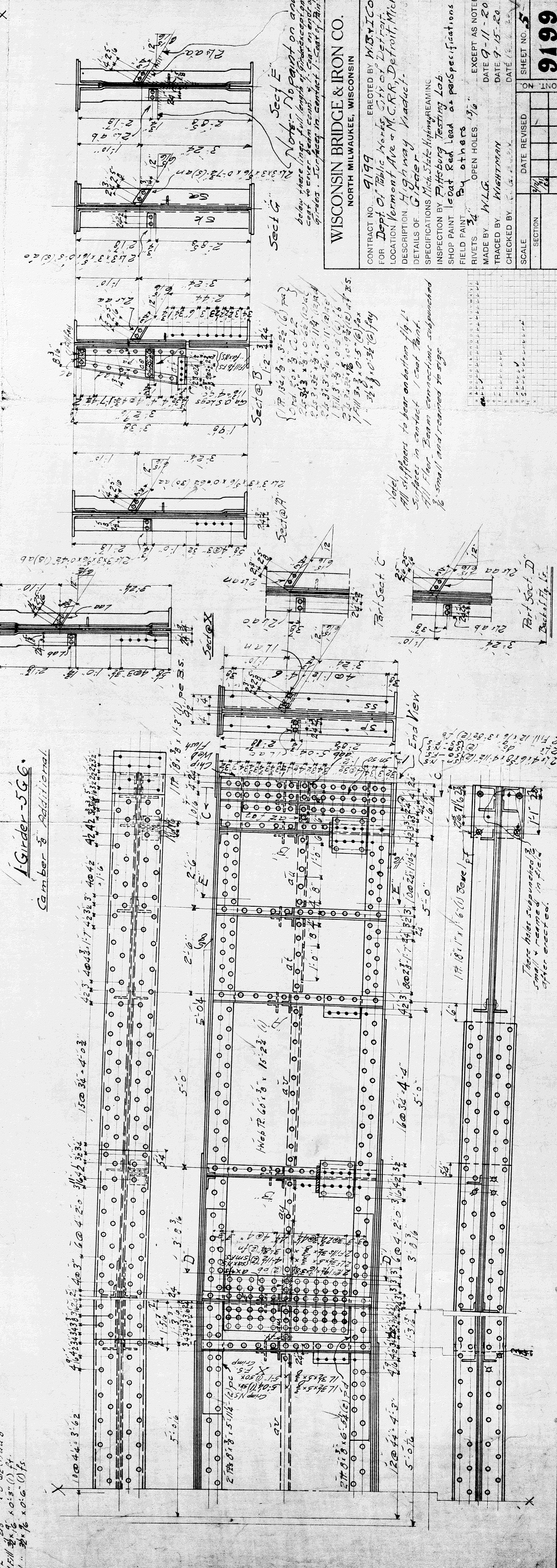


**I Girder - 5 G.C.**  
Camber & Additional



**WISCONSIN BRIDGE & IRON CO.**  
NORTH MILWAUKEE, WISCONSIN

CONTRACT NO. 9199  
ERECTED BY W.B.I.C.O.  
FOR Dept. of Public Works, City of Detroit.  
LOCATION Vermont Ave. & M.C.R.R., Detroit, Mich.  
DESCRIPTION High way Viaduct.  
DETAILS OF Girders  
SPECIFICATIONS Mich. State Highway Com.  
INSPECTION BY Pittsburg Testing Lab.  
SHOP PAINT Lead Red Lead as per specifications  
FIELD PAINT By others  
RIVETS OPEN HOLES  
MADE BY W.L.G.  
TRACED BY WIGHTMAN  
CHECKED BY  
DATE 9-11-20  
DATE 9-15-20

EXPERT AS NOTED  
DATE 9-11-20  
DATE 9-15-20

SCALE SECTION DATE REVISION SHEET NO. 5

**9199**

Note: All stiffeners to bear on bottom flg. of floor beams connections subjoined to be small and remain to size.

End View

These holes subjoined to be small & remain in place after erected.