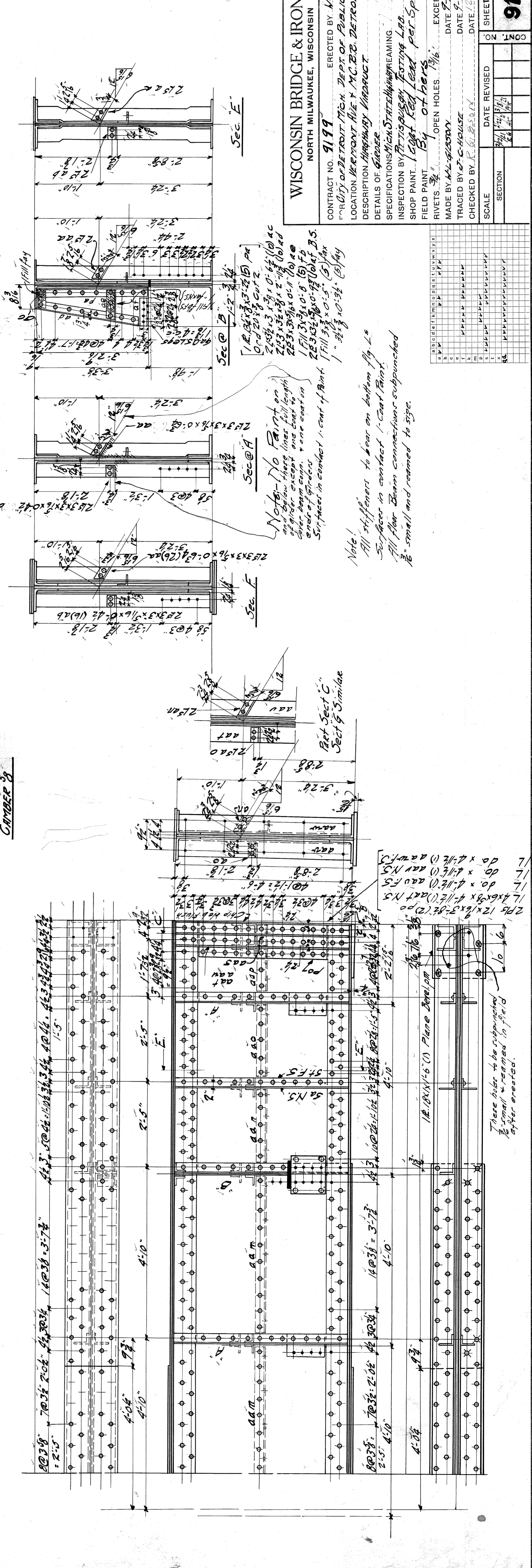


ONE GIRDER 945
 NUMBER 3



WISCONSIN BRIDGE & IRON CO.
 NORTH MILWAUKEE, WISCONSIN

CONTRACT NO. 9199
 ERECTED BY W.B.I.CO.
 CITY OF DETROIT MICH. DEPT. OF PUBLIC WORKS
 LOCATION VEYONT AVE & MC BRIDE DETROIT

DESCRIPTION HIGHWAY BRIDGE
 DETAILS OF GIRDER
 SPECIFICATIONS MICH. STATE HIGHWAY DEPT.
 INSPECTION BY P. T. SPURGEY TESTING LAB.
 SHOP PAINT 1 coat Red Lead per Spec. see M4c
 FIELD PAINT 1 1/2 coats
 RIVETS 3/4\"/>

MADE BY A.L. GIBSON
 DATE 7-16-20
 TRACED BY C. HOUSE
 DATE 12-11-20
 CHECKED BY R. G. B. S. R.

SCALE SECTION
 DATE REVISED
 SHEET NO. 9
9199

Note!
 All stiffeners to bear on bottom flg. Ls
 Surfaces in contact 1-coat Paint.
 All floor beam connections subpunched
 R. small and reamed to size.

NO.	DESCRIPTION	DATE
1	AS SHOWN	
2	BY P.P.	
3	BY P.P.	
4	BY P.P.	
5	BY P.P.	
6	BY P.P.	
7	BY P.P.	
8	BY P.P.	
9	BY P.P.	