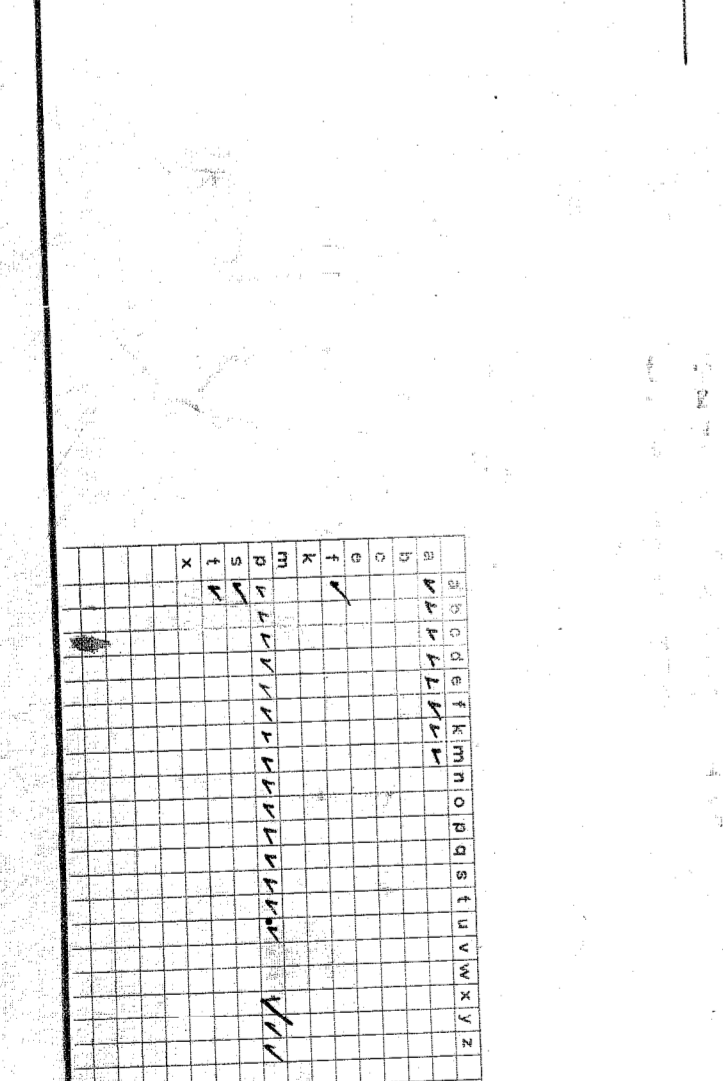
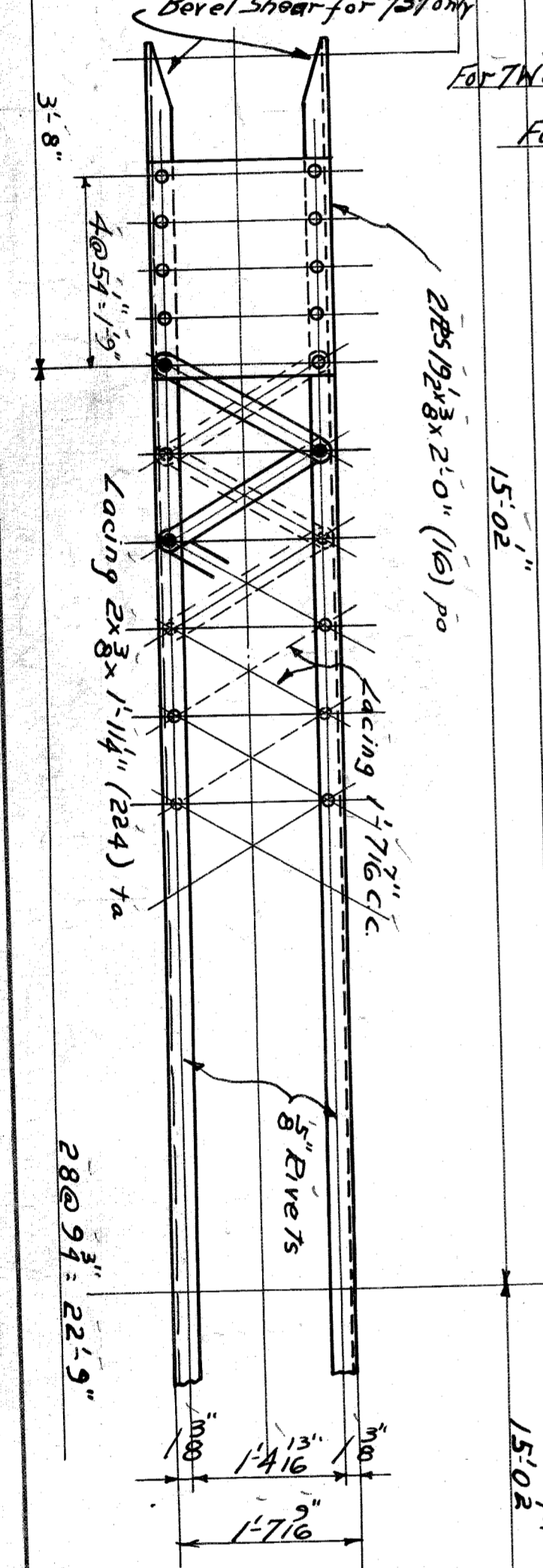
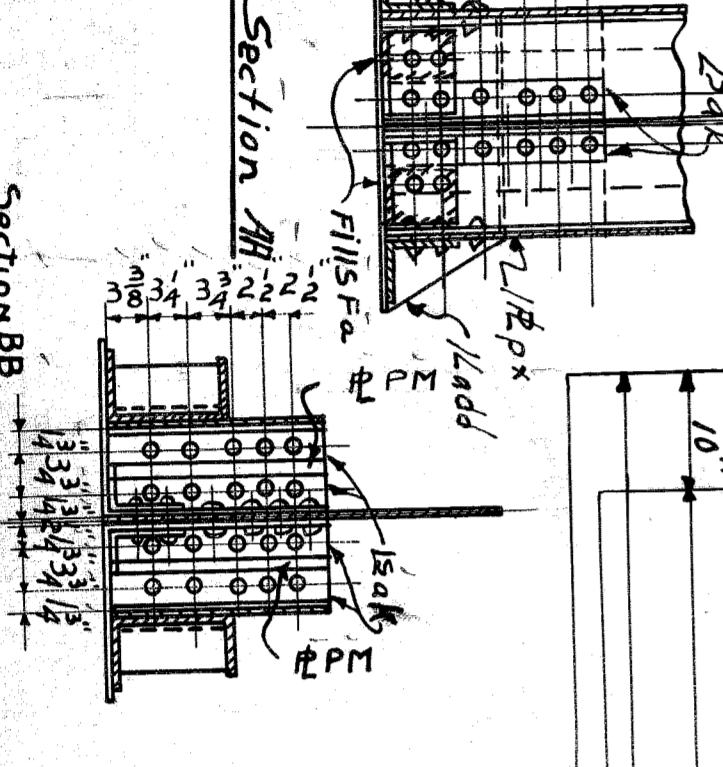
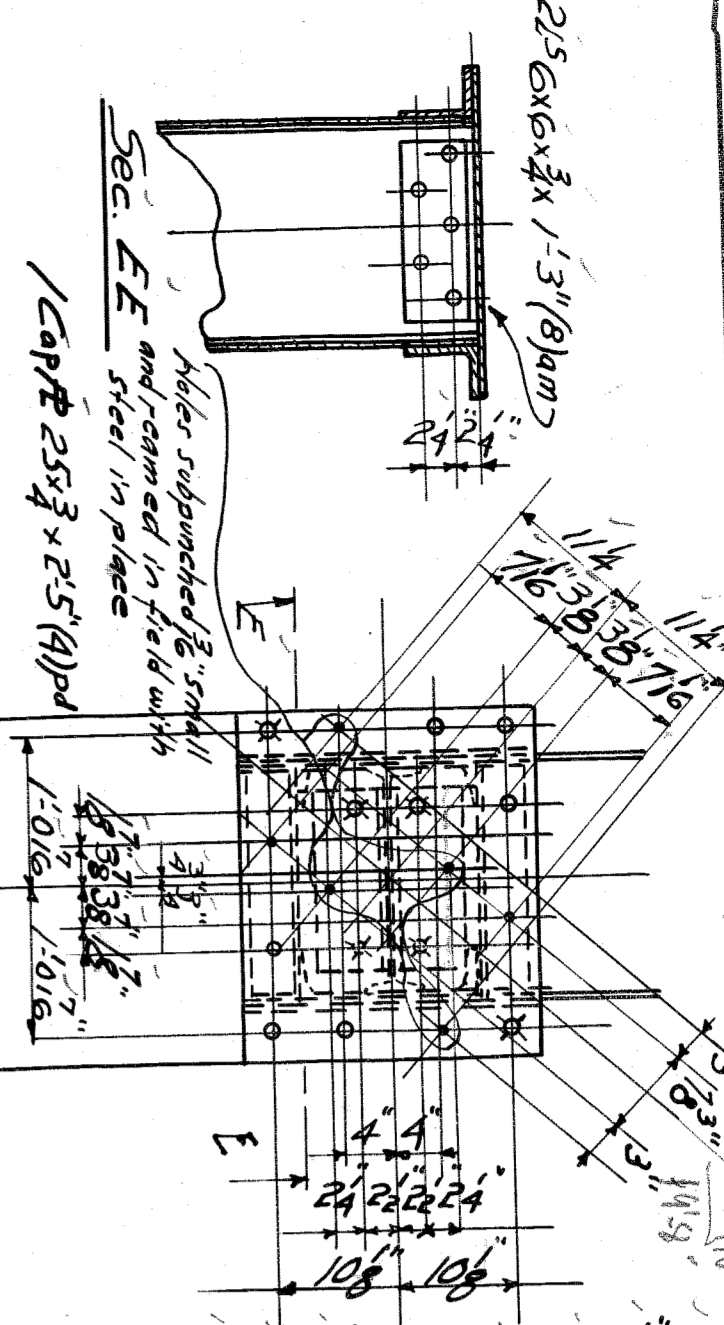
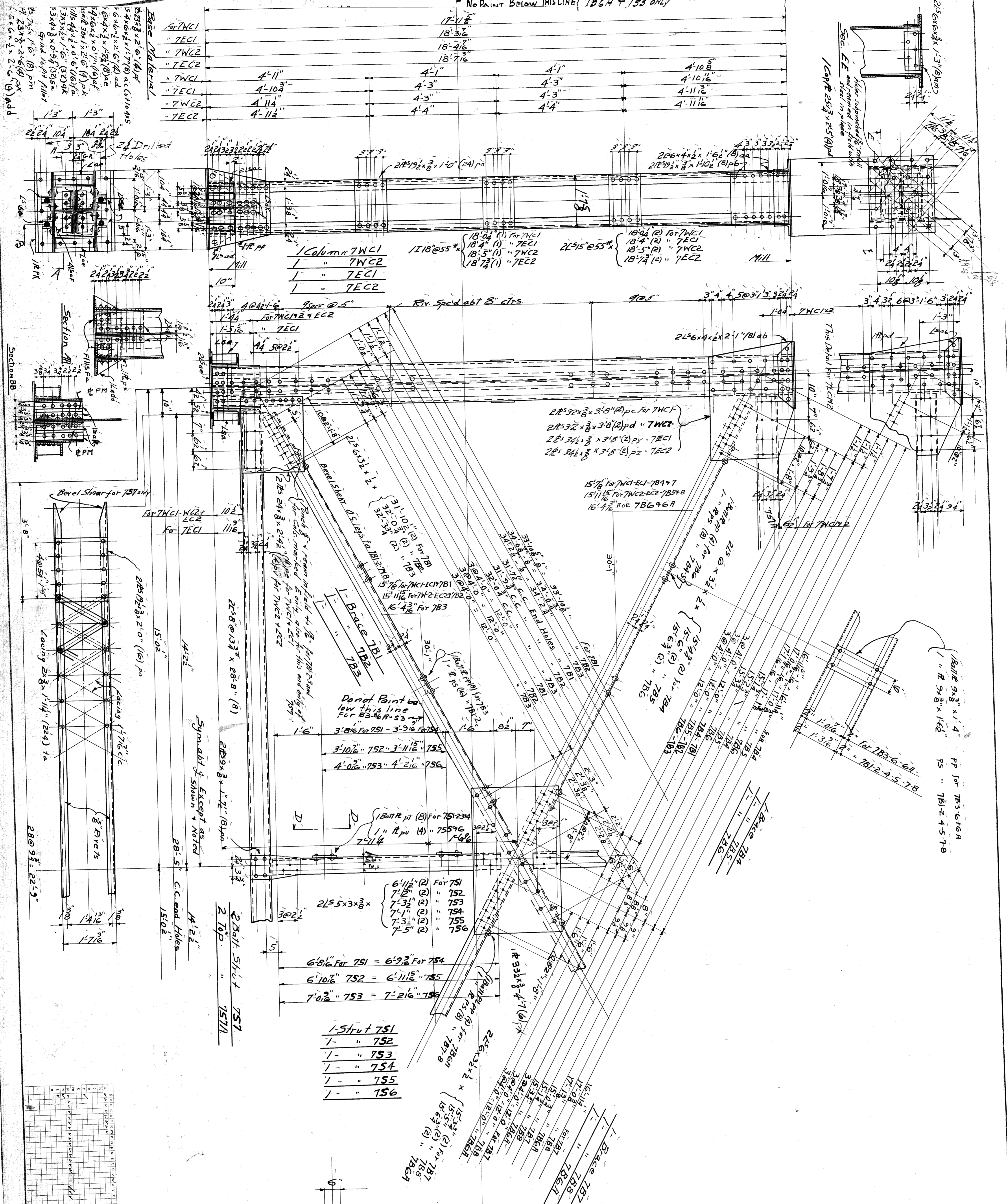


THIS APPLIES TO 7B3
7B6A + 759 ONLY

NO PAINT BELOW THIS LINE



1-5 strut 751

1-	752
1-	753
1-	754
1-	755
1-	756

No	Description	Mark	Bill
1	Column	7W1C1	711
1	"	7W1C2	712
1	"	7W1C3	713
1	"	7W1C4	714
1	"	7W1C5	715
1	"	7W1C6	716
1	"	7W1C7	717
1	"	7W1C8	718
1	"	7W1C9	719
1	"	7W1C10	720
1	"	7W1C11	721
1	"	7W1C12	722
1	"	7W1C13	723
1	"	7W1C14	724
1	"	7W1C15	725
1	"	7W1C16	726
1	"	7W1C17	727
1	"	7W1C18	728
1	"	7W1C19	729
1	"	7W1C20	730
1	"	7W1C21	731
1	"	7W1C22	732
1	"	7W1C23	733
1	"	7W1C24	734
1	"	7W1C25	735
1	"	7W1C26	736
1	"	7W1C27	737
1	"	7W1C28	738
1	"	7W1C29	739
1	"	7W1C30	740
1	"	7W1C31	741
1	"	7W1C32	742
1	"	7W1C33	743
1	"	7W1C34	744
1	"	7W1C35	745
1	"	7W1C36	746
1	"	7W1C37	747
1	"	7W1C38	748
1	"	7W1C39	749
1	"	7W1C40	750
1	"	7W1C41	751
1	"	7W1C42	752
1	"	7W1C43	753
1	"	7W1C44	754
1	"	7W1C45	755
1	"	7W1C46	756
1	"	7W1C47	757
1	"	7W1C48	758
1	"	7W1C49	759
1	"	7W1C50	760
1	"	7W1C51	761
1	"	7W1C52	762
1	"	7W1C53	763
1	"	7W1C54	764
1	"	7W1C55	765
1	"	7W1C56	766
1	"	7W1C57	767
1	"	7W1C58	768
1	"	7W1C59	769
1	"	7W1C60	770
1	"	7W1C61	771
1	"	7W1C62	772
1	"	7W1C63	773
1	"	7W1C64	774
1	"	7W1C65	775
1	"	7W1C66	776
1	"	7W1C67	777
1	"	7W1C68	778
1	"	7W1C69	779
1	"	7W1C70	780
1	"	7W1C71	781
1	"	7W1C72	782
1	"	7W1C73	783
1	"	7W1C74	784
1	"	7W1C75	785
1	"	7W1C76	786
1	"	7W1C77	787
1	"	7W1C78	788
1	"	7W1C79	789
1	"	7W1C80	790
1	"	7W1C81	791
1	"	7W1C82	792
1	"	7W1C83	793
1	"	7W1C84	794
1	"	7W1C85	795
1	"	7W1C86	796
1	"	7W1C87	797
1	"	7W1C88	798
1	"	7W1C89	799
1	"	7W1C90	800

WISCONSIN BRIDGE & IRON CO.

CONTRACT NO. 9199
ERECTED BY W.B. & I.C.O.
FOR DEPT. OF PUBLIC WORKS CITY OF DETROIT, MICH.
LOCATION: Vermont Ave. & W. C. P. R. Detroit Mich.
DESCRIPTION: Highway Viaduct
DETAILS OF: Beams # 1-42
SPECIFICATIONS: Mich. State Highway Engineering, as noted
INSPECTION BY: Pittsburgh Testing Lab
FIELD PAINT: By others
RIVETS: A
MADE BY: W. Hauck
TRACED BY: E. P. Reuss
CHECKED BY: [Signature]
SCALE: 3/4" = 1'-0"
DATE REVISION: [Blank]
DATE: 8-27-20
DATE: Sept 29, 1920