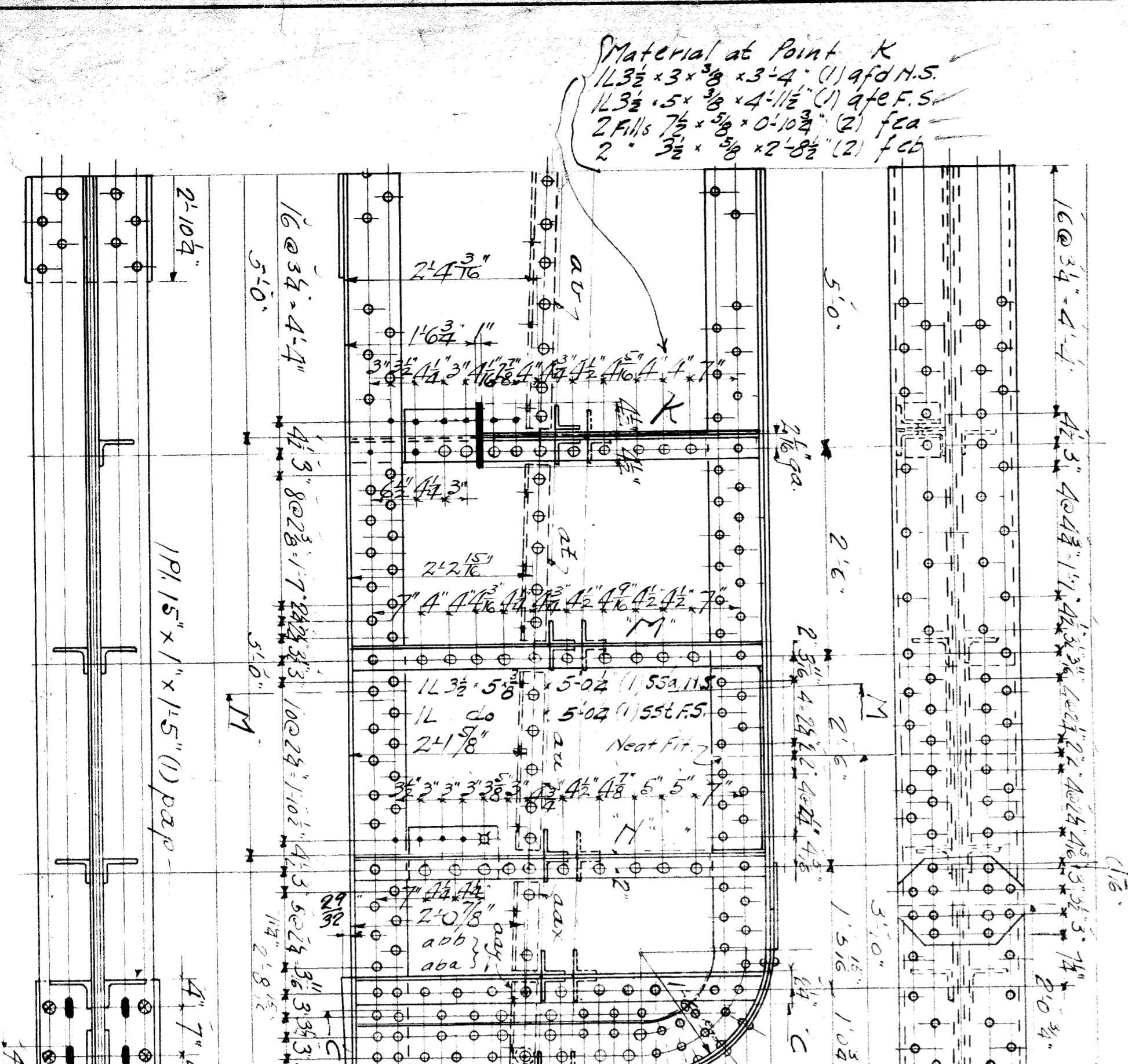
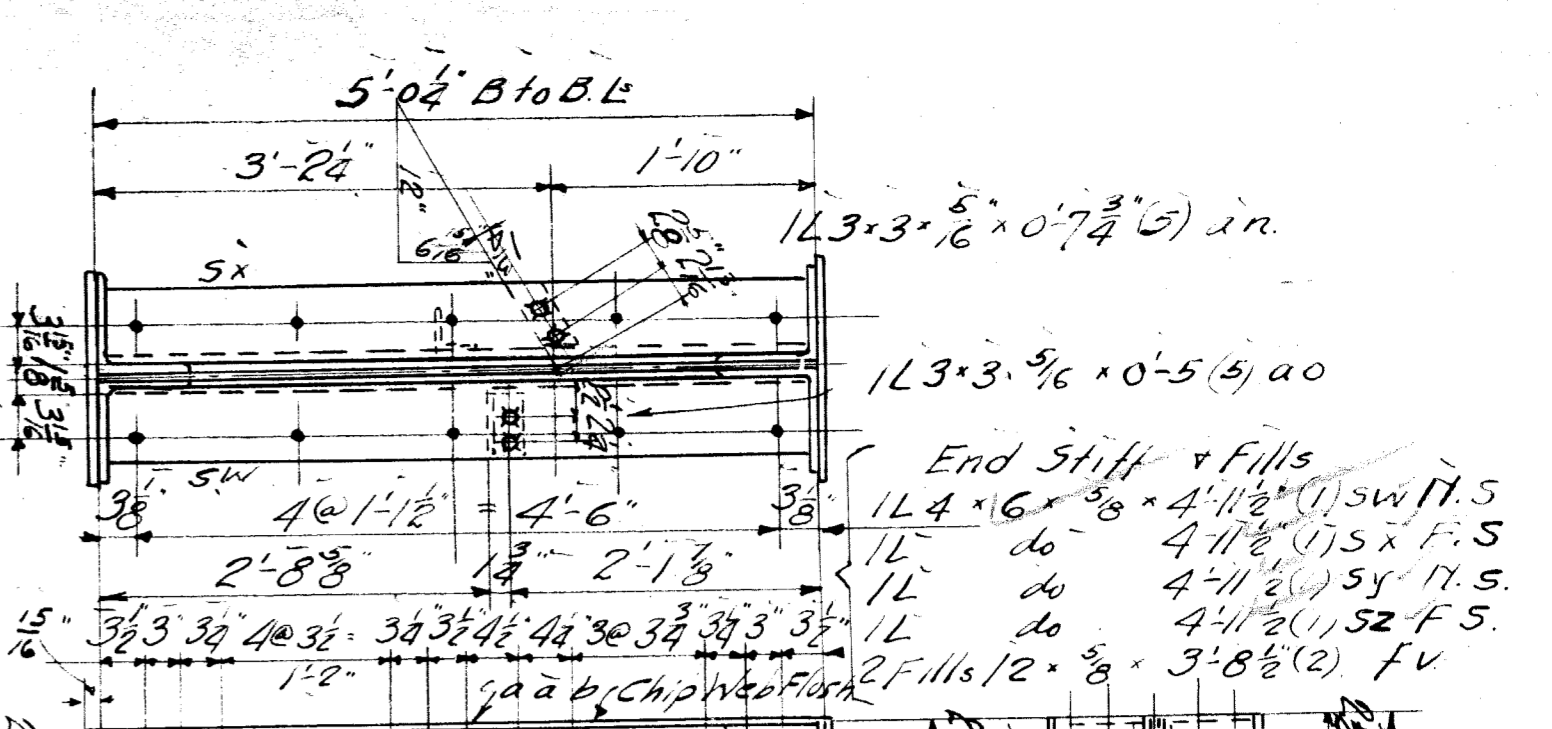
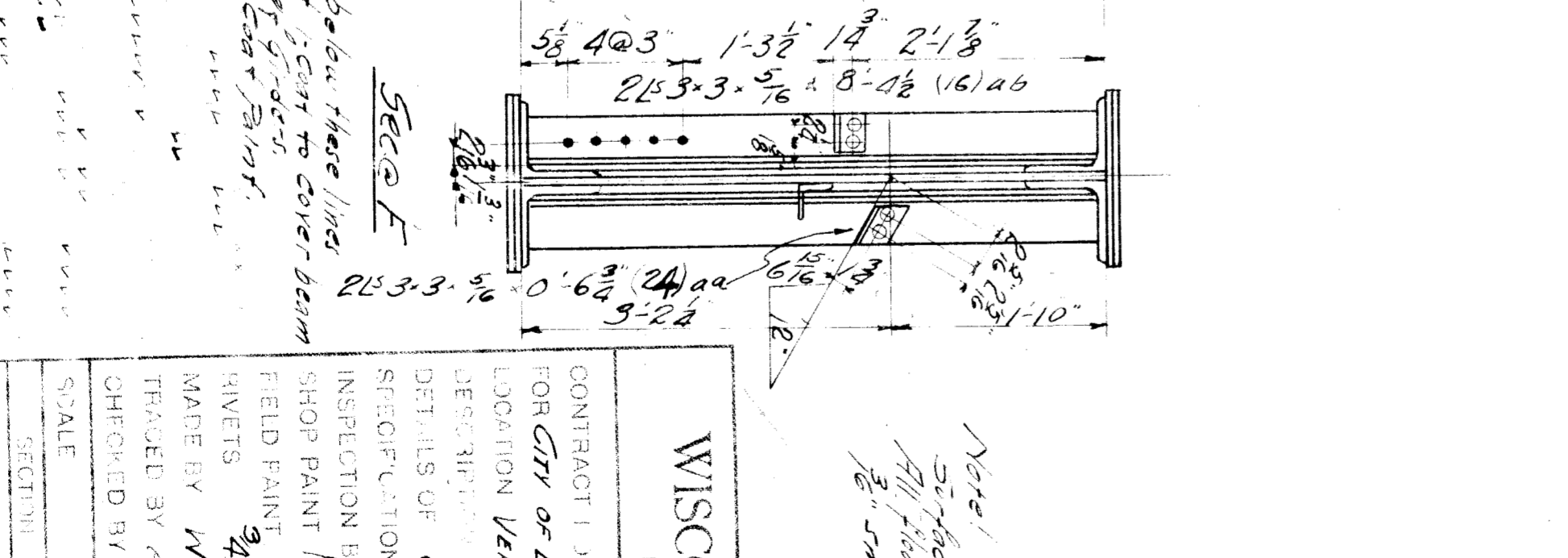
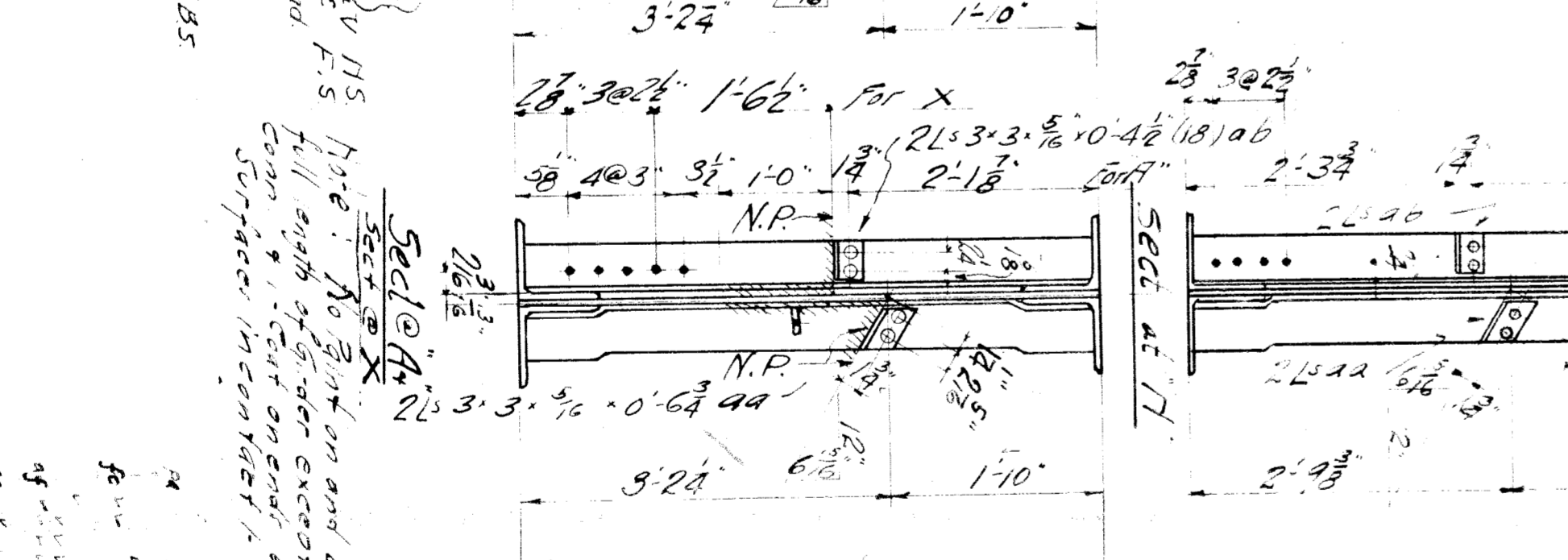
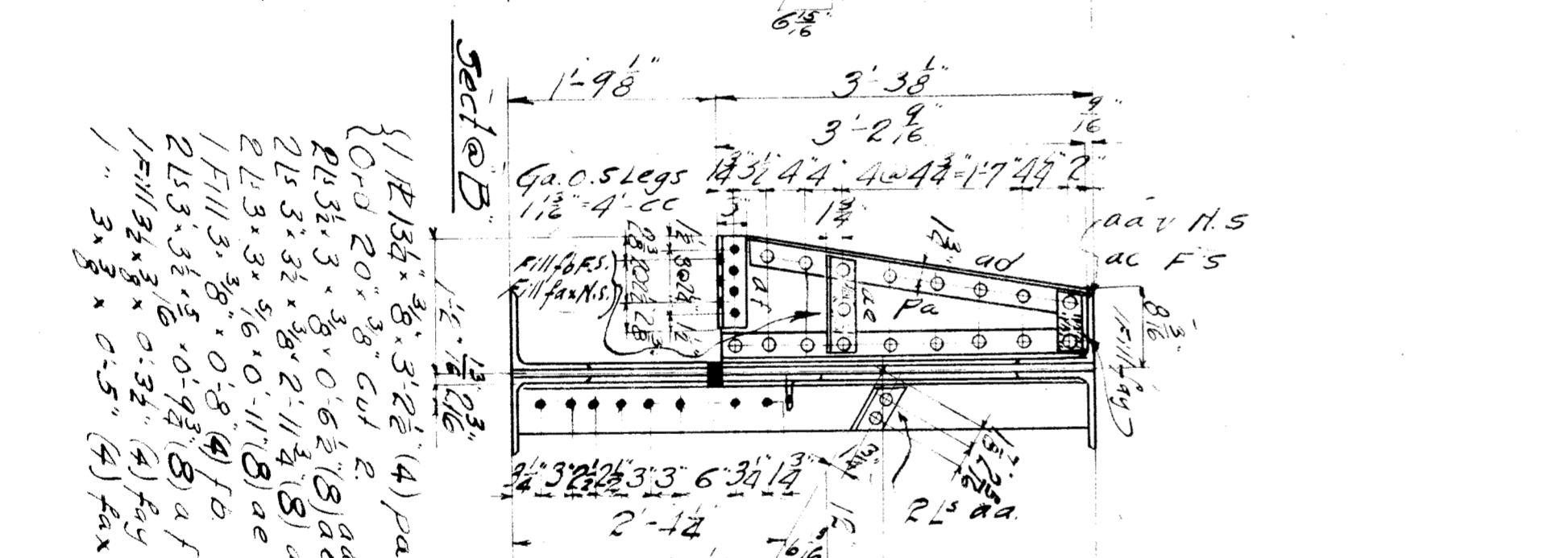
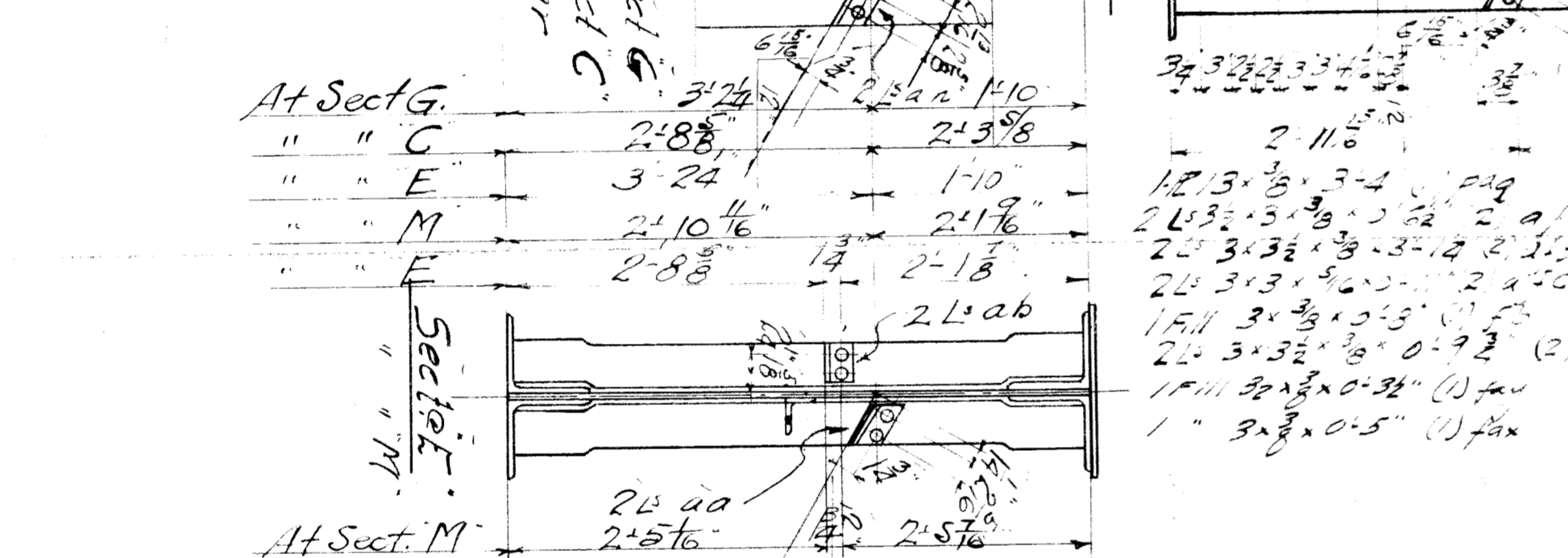
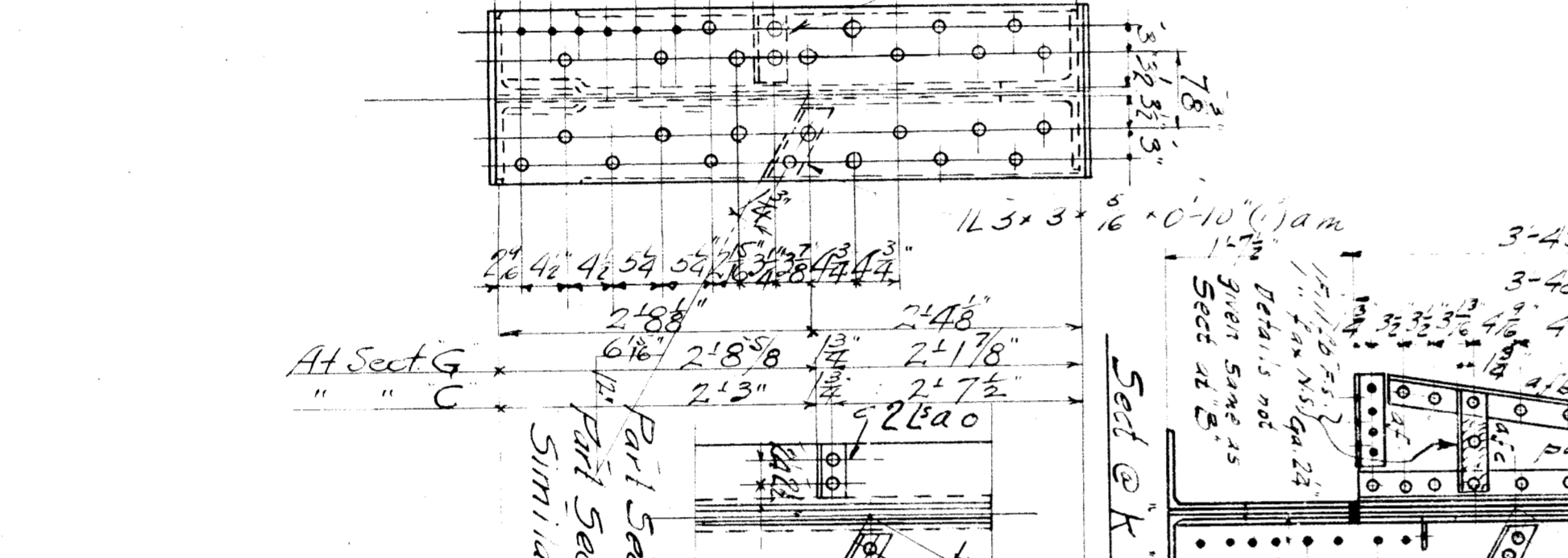


Steel I₃ Girder O.S. Legs E.
 12 @ 3.3 x 10.6 (1) Quad
 12 @ 3.3 x 10.6 (1) Quad
 12 @ 3.3 x 10.6 (1) Quad
 12 @ 3.3 x 10.6 (1) Quad
 12 @ 3.3 x 10.6 (1) Quad
 12 @ 3.3 x 10.6 (1) Quad
 12 @ 3.3 x 10.6 (1) Quad
 12 @ 3.3 x 10.6 (1) Quad
 12 @ 3.3 x 10.6 (1) Quad
 12 @ 3.3 x 10.6 (1) Quad
 12 @ 3.3 x 10.6 (1) Quad
 12 @ 3.3 x 10.6 (1) Quad
 12 @ 3.3 x 10.6 (1) Quad
 12 @ 3.3 x 10.6 (1) Quad
 12 @ 3.3 x 10.6 (1) Quad
 12 @ 3.3 x 10.6 (1) Quad
 12 @ 3.3 x 10.6 (1) Quad



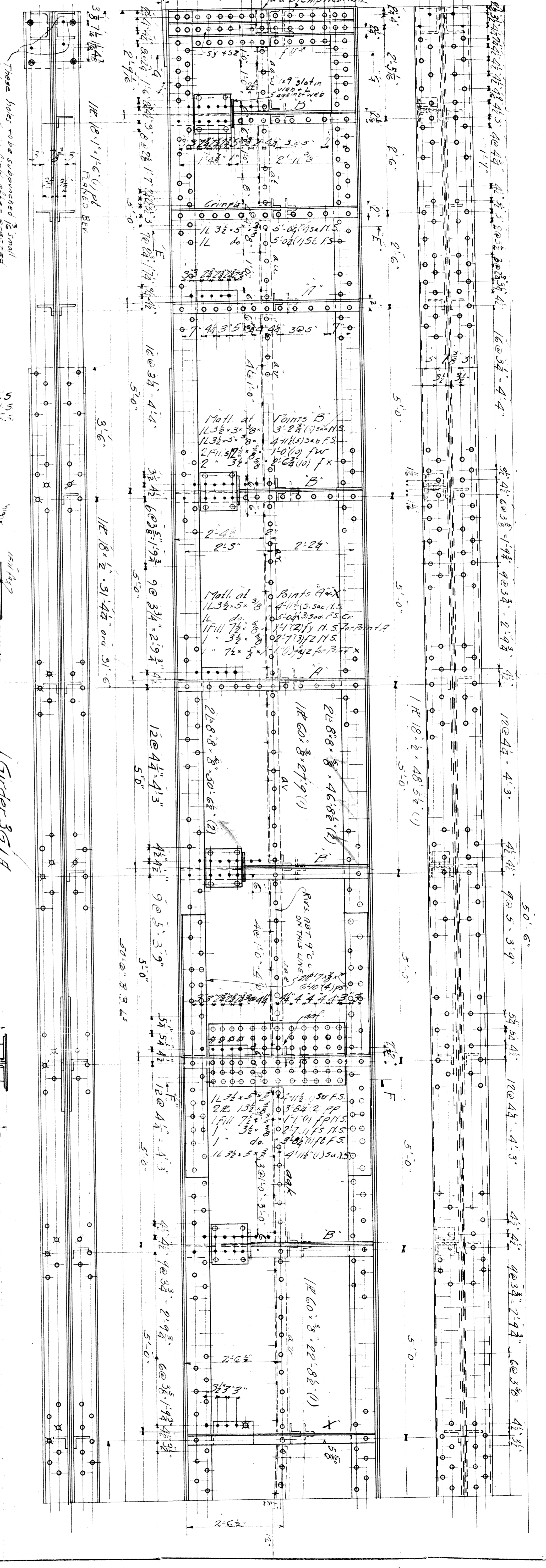
Material at Point K
 12 @ 3.3 x 10.6 (1) Quad H.S.
 12 @ 3.3 x 10.6 (1) Quad F.S.
 2 @ 1/2 x 3/8 x 10.0 (2) F.S.
 2 @ 1/2 x 3/8 x 10.0 (2) F.S.

These holes were subcontracted to small and removed in field after erected



End Stiff + Fills
 12 @ 4.6 x 10.6 (1) Quad H.S.
 12 @ 4.6 x 10.6 (1) Quad F.S.
 2 @ 1/2 x 3/8 x 10.0 (2) F.S.
 2 @ 1/2 x 3/8 x 10.0 (2) F.S.

Material at Point A
 12 @ 3.3 x 10.6 (1) Quad H.S.
 12 @ 3.3 x 10.6 (1) Quad F.S.
 1 @ 1/2 x 3/8 x 10.0 (1) H.S.
 1 @ 1/2 x 3/8 x 10.0 (1) F.S.



WISCONSIN BRIDGE & IRON CO.	
NORTH MILWAUKEE, WISCONSIN	
ERECTED BY W.B. & I. Co.	
CONTRACT NO. 9199	
FOR CITY OF DETROIT Mich. Dept. of Public Works	
LOCATION VERNON AVE & M.C.B.R. DETROIT	
DESIGN OF GEORGE HUGHMAN	
SUPERVISOR Mich. State Highway Eng.	
INSPECTION BY FRISBURY TESTING LAB.	
SHOP PAINT 1 Coat FEED LEAD 2d Spec. Canada/Steel	
FIELD PAINT 2 OTHERS 1/2	
MADE BY W.L. FISHER	
TRACED BY W.L. FISHER	
CHECKED BY	
SCALE	DATE REVISED
SECTION	DATE
NO.	
SHEET NO. 3	
9199	
EXCEPT AS NOTED	
DATE 9-22-20	
DATE 10-14-20	