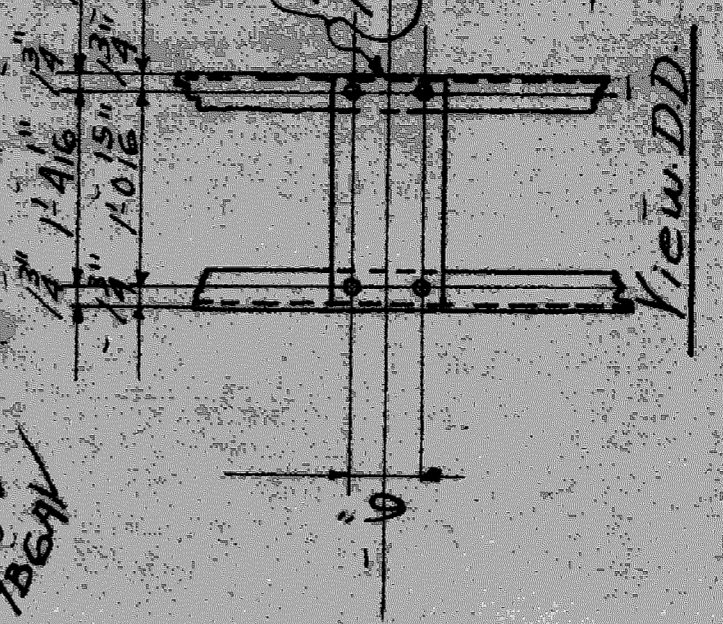


No.	Description	Part	Quantity
1	Column	781	1
2	Base	784	1
3	Stiff	751	1
4	Diag	761	1
5	Deck	781	1
6	Deck	782	1
7	Deck	783	1
8	Deck	784	1
9	Deck	785	1
10	Deck	786	1
11	Deck	787	1
12	Deck	788	1
13	Deck	789	1
14	Deck	790	1
15	Deck	791	1
16	Deck	792	1
17	Deck	793	1
18	Deck	794	1
19	Deck	795	1
20	Deck	796	1
21	Deck	797	1
22	Deck	798	1
23	Deck	799	1
24	Deck	800	1



WISCONSIN BRIDGE & IRON CO.
NORTH MILWAUKEE, WISCONSIN

CONTRACT NO. 9199
ERECTED BY M. B. I. CO.
FOR DEPT. OF PUBLIC WORKS CITY OF DETROIT, MICH.
LOCATION: Vermont Ave. & 12th St., Detroit, Mich.

DESCRIPTION: Highway Viaduct

DETAILS OF: Bridge No. 192

SPECIFICATIONS: Mich. State Highway Department (See Specifications on This Shop)

INSPECTION BY: F. M. S. (See Specifications on This Shop)

SHOP PAINT: Red Lead for Specification

FIELD PAINT: Blue for Specification

RIVETS: OPEN HOLES 13

MADE BY: M. B. I. CO.

TRACED BY: F. F. S.

CHECKED BY: J. J. S.

SCALE: 3/8" = 1'-0"

DATE: 10/15/24

DATE REVISION: 10/15/24

SECTION: 1

Note: Streets 757 & 757B are identical except that 757 is unpainted.