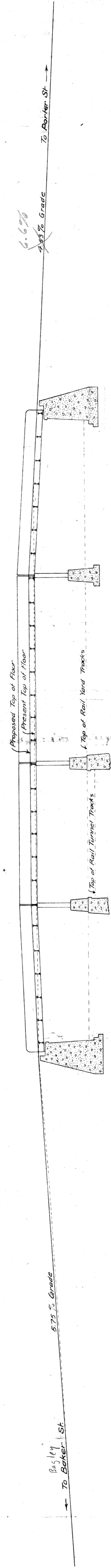
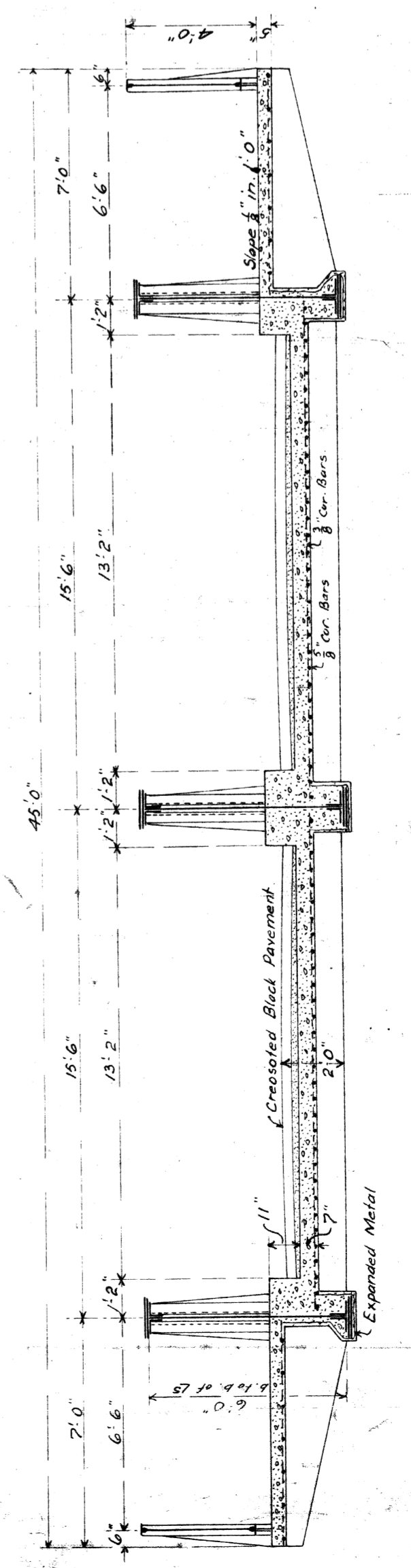


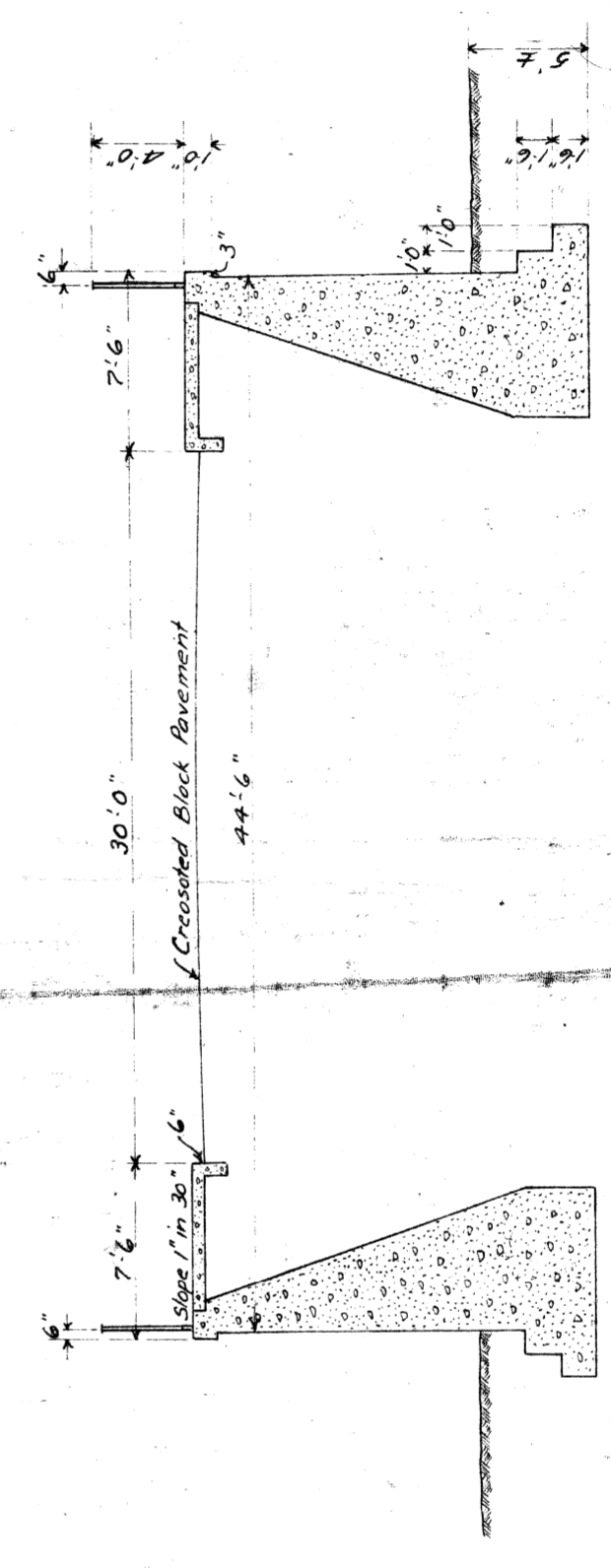
PLAN OF BRIDGE
Scale: 1 in = 20 ft



ELEVATION ON CENTER LINE OF 14TH. AVE.
Scale: 1 in = 20 ft



CROSS SECTION THROUGH BRIDGE
Scale: 1/4 in = 1 ft



CROSS SECTION THROUGH APPROACH
Scale: 1/8 in = 1 ft

PLAN OF PROPOSED BRIDGE
OVER THE MICHIGAN CENTRAL RAILROAD
AT FOURTEENTH AVENUE

CITY ENGINEER'S OFFICE
DETROIT, MICHIGAN
DEC. 30TH 1908