

DESIGNED BY		APPROVED:	
DRAWN BY		M.A.P.	
TRACED BY		G.J.H.	
CHECKED BY		G.J.H.	
REFERENCE DRAWINGS			
DESCRIPTION	DATE	BY	DATE
REVISIONS LOCATED BY COORDINATES ON SHEET			

WEST SIDE INDUSTRIAL REHABILITATION PROJECT #2
14 TH ST. & BAGLEY AVE. BRIDGES CROSSING THE PCRR

CITY OF DETROIT
 DEPARTMENT OF PUBLIC WORKS
 CITY ENGINEERS OFFICE
 FOR
DETROIT HOUSING COMMISSION

SHEET 1 OF 1 SHEETS
 CONTRACT NO. _____
 DRWG NO. _____
 DATE 9-22-70
 1676 A/C

GENERAL DRAWING

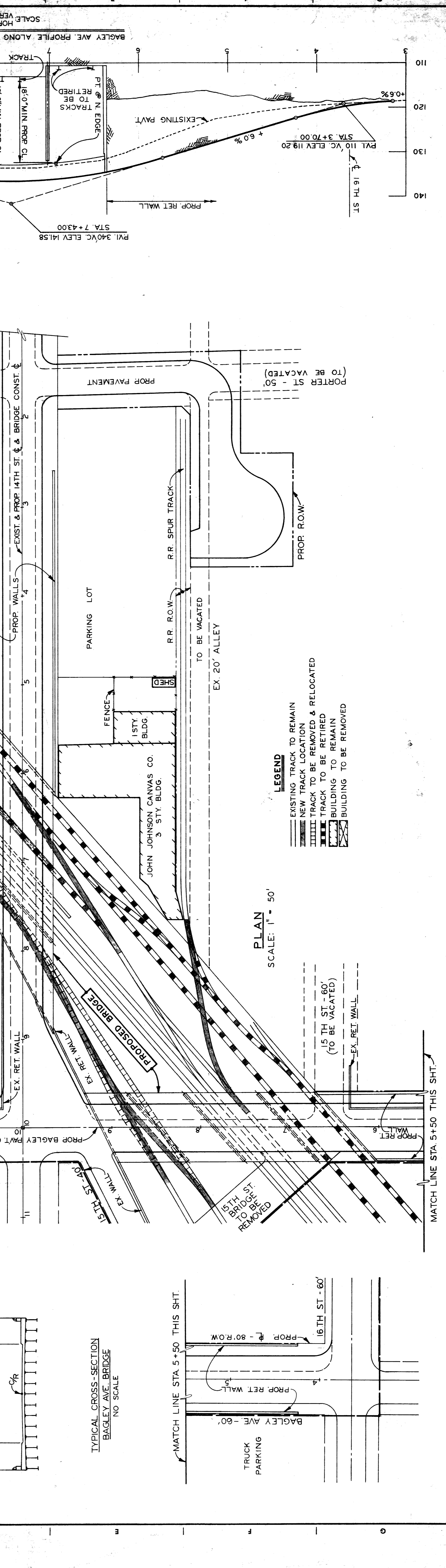
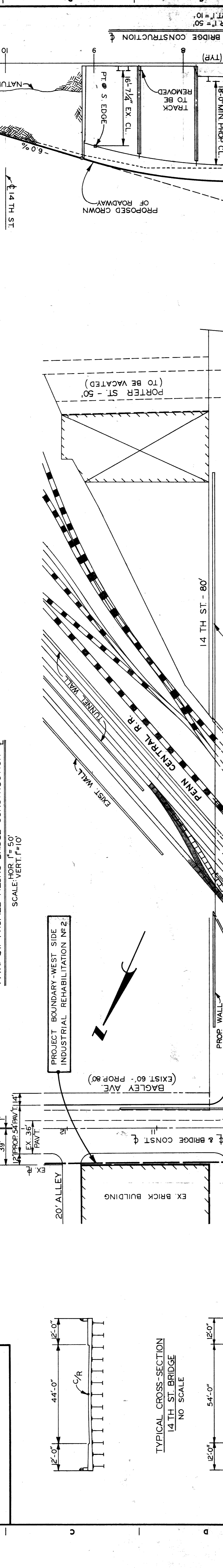
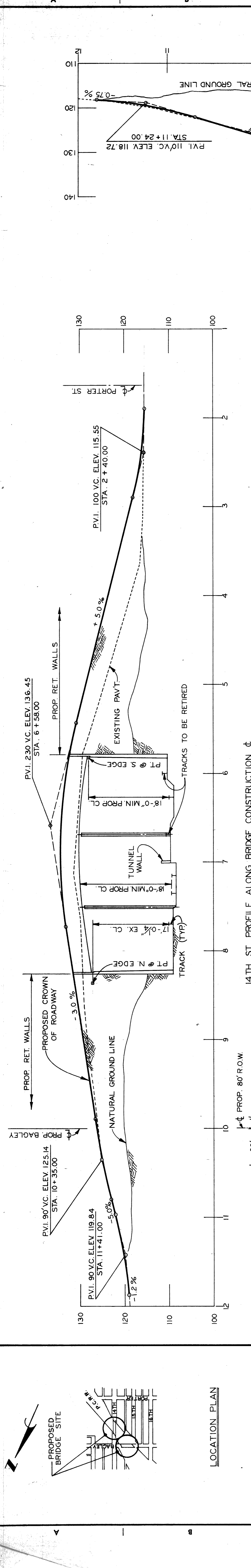
BRUNING 897-1

SCALE: HORIZ. 1" = 50' VERT. 1" = 10'

SCALE: 1" = 50'

SCALE: VERT. 1" = 10'

SCALE: HORIZ. 1" = 50'



WEST SIDE INDUSTRIAL REHABILITATION PROJECT NO. 2
14TH ST. & BAGLEY AVE. BRIDGES CROSSING THE PCRR

CITY OF DETROIT
DEPARTMENT OF PUBLIC WORKS
CITY ENGINEERS OFFICE

FOR
DETROIT HOUSING COMMISSION

GENERAL DRAWING

SHEET 1 OF 1 SHEETS
CONTRACT NO.
DRWG NO. 9-22-70
DATE 11 16 76 AHC

DESIGNED BY	APPROVED	CITY ENGINEER
DRAWN BY	M.A.P.	
TRACED BY	G.J.H.	
CHECKED BY		
REVISIONS LOCATED BY COORDINATES ON SHEET		