

	N	E
1	10000.0000	10000.0000
2	9223.4507	10333.5966
3	9220.8689	10334.7058
4	9126.6888	10115.6343
5	8932.4487	9663.8141
6	8687.5959	9082.6337
7	9467.9949	8745.6599
8	9715.0717	9328.2076
9	10161.0023	10379.6049
10	9434.0903	10691.2432
11	9621.9585	9100.9858
12	9457.0359	9438.8592
13	8966.6608	10443.4802
14	9717.8289	9327.0253
15	9719.0003	9329.7872
16	9716.2431	9330.9695
17	9470.7519	8744.4770
18	8687.1909	9080.6623
19	8688.6981	11013.0183
20	9225.4629	10332.7322
21	7637.2132	9531.3218
22	7890.6913	10113.8488
23	8477.3752	11104.2212
24	7893.4718	10112.6563
25	8480.1520	11103.0225
26	8570.3792	11255.3337
27	8933.6335	9666.5701

POINTS • PK NAIL
 □ D.H. IN BOX
 TOPO 18A
 SCALE: 1"=100'

NO.	DESCRIPTION	BY	DATE

REVISIONS LOCATED BY COORDINATES ON SHEET

DESIGNED BY: *R. H. Hahn*

DRAWN BY: *R. H. Hahn*

TRACED BY: *R. H. Hahn*

CHECKED BY: *R. E.*

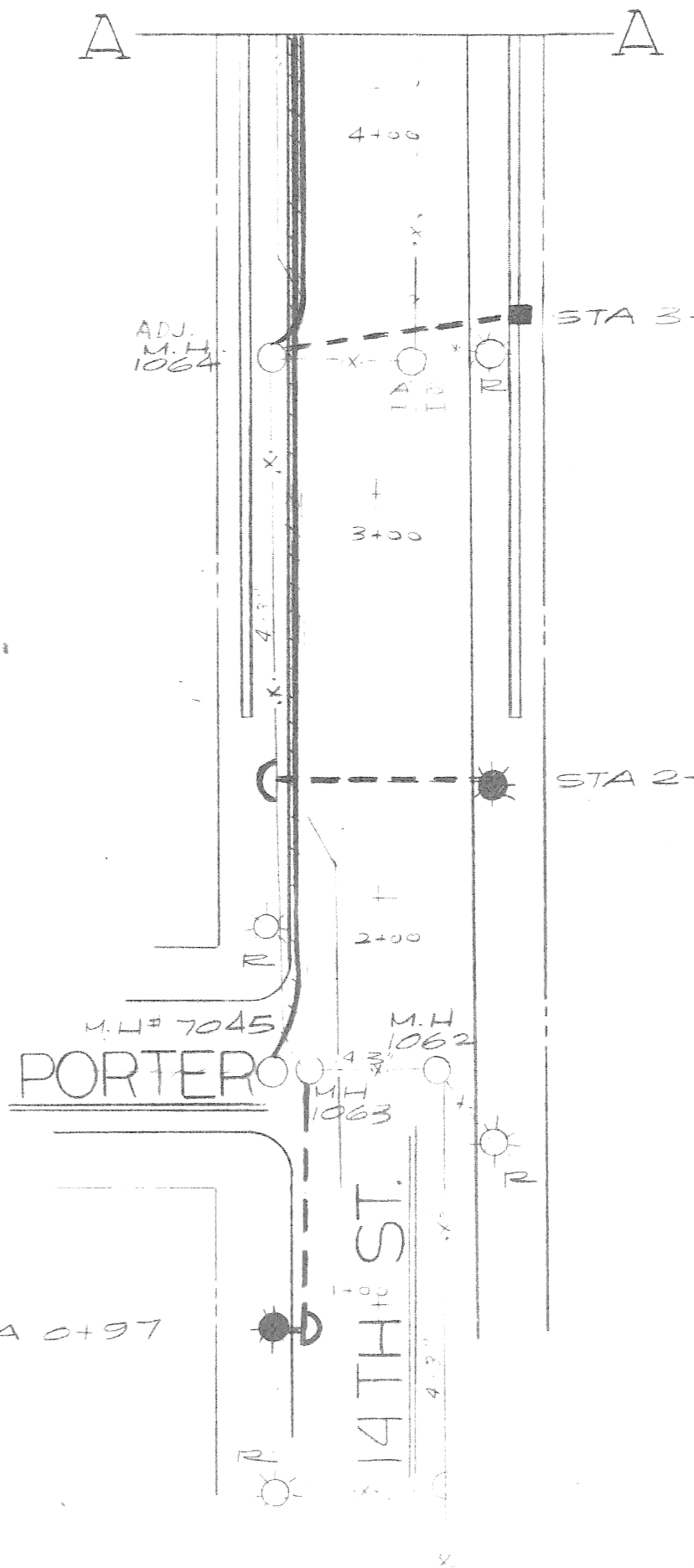
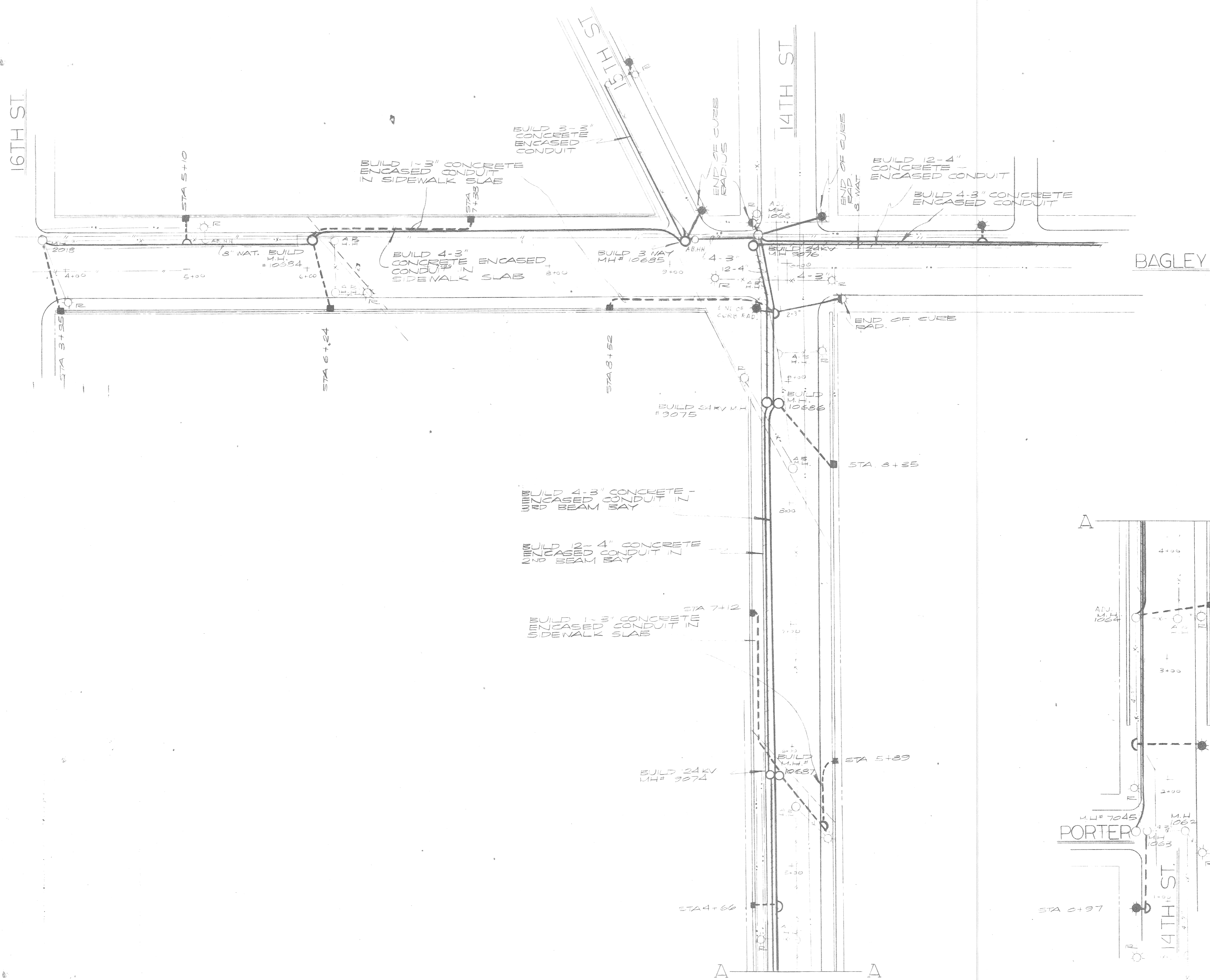
APPROVED: *Walter Williams*
 ENGINEER OF SURVEYS

CITY ENGINEER

CITY OF DETROIT
 DEPARTMENT OF PUBLIC WORKS
 CITY ENGINEERS OFFICE
 BUREAU OF SURVEYS

HORIZONTAL CONTROL - WEST SIDE
 INDUSTRIAL REHABILITATION PROJECT NO. 2

SHEET 1 OF 1 SHEETS
CONTRACT NO. 40 1865 B
DRWG NO. 5 477
DATE JULY 1969



FOUNDATION NOTE
 BRIDGE PARAPET FOUNDATIONS TO BE MECHANICALLY EQUIVALENT TO FDN. #43-0350-4' LEVEL PAD AT SIDEWALK ELEVATION TO BE 2' X 2' MINIMUM. ANCHOR BOLTS TO BE GALVANIZED STEEL 1" DIA. SET ON 1" DIAMETER BOLT CIRCLE WITH 2 3/4" BOLT PROJECTION. A#2 STRANDED GROUND WIRE SHALL EXTEND 18" ABOVE THE FOUNDATION. THE GROUND WIRE SHALL BE CONNECTED TO A SUITABLE GROUND BE BENEATH THE FDN. GROUND ROD OR STRUCTURAL STEEL.

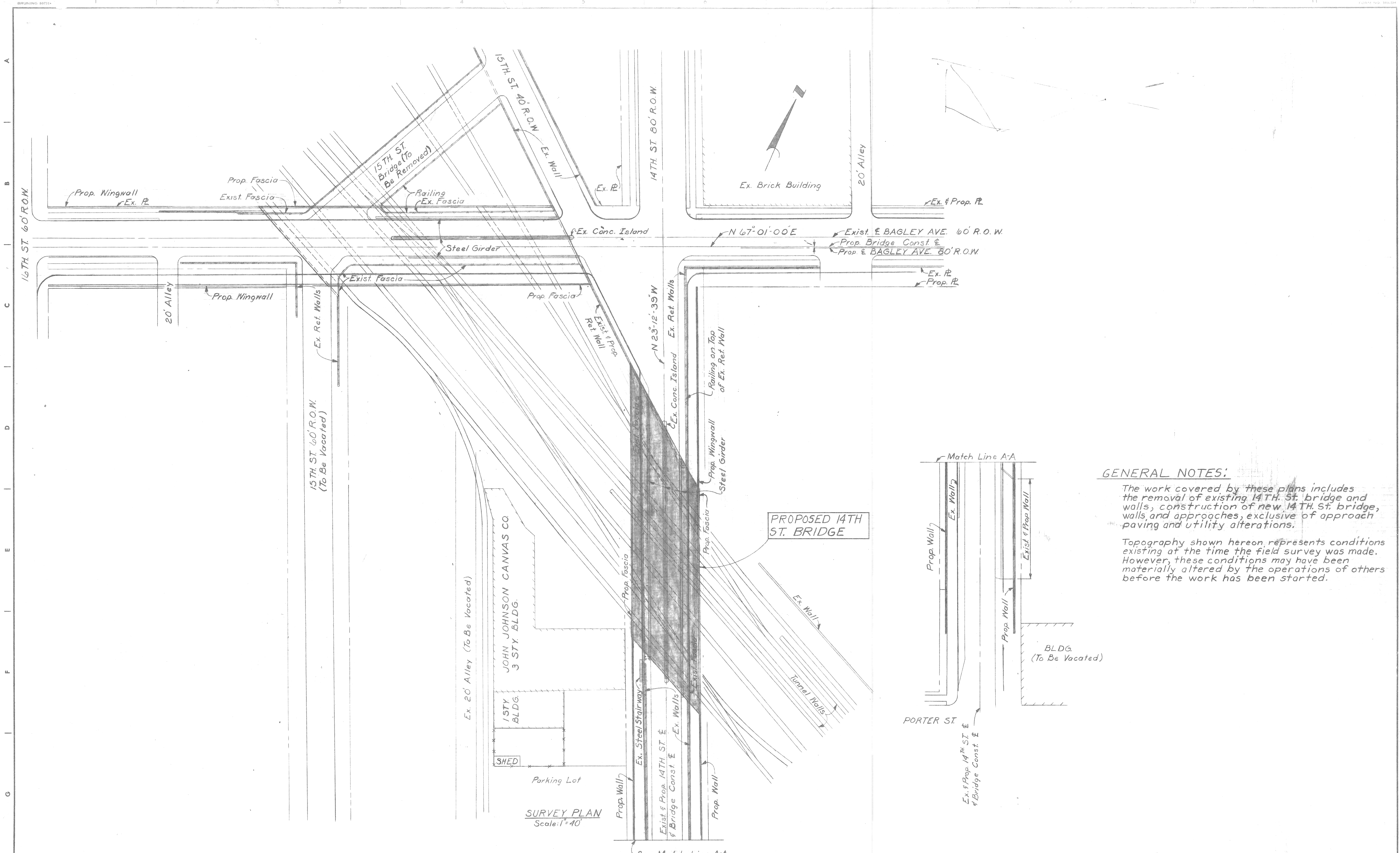
- LEGEND**
- BUILD FOUNDATION IN BRIDGE PARAPET OR RETAINING WALL (SEE FOUNDATION THIS SHEET)
 - BUILD LIGHTING STD. FDN. PER DWG# 43-0353
 - ⊙ BUILD COMBINATION FDN. PER DWG# 43-0356
 - BUILD TS CONTROLLER FDN. PER DWG# 43-0356
 - REM. EXIST. ST LTB. FDN. # STD
 - BUILD CONCRETE ENCASED PVC CONDUIT NUMBER # SIZE AS NOTED.
 - - - BUILD 1-3" CONCRETE ENCASED PVC CONDUIT
 - BUILD #1 2WAY MANHOLE
 - BUILD TYPE D" HANDHOLE
 - - - EXISTING CONDUIT TO REMAIN
 - - - EXISTING CONDUIT TO BE ABANDONED
 - ADJ. ADJ. ADJUST EXISTING MANHOLE OF HANDHOLE TO NEW GRADE
 - ABO. AB. ABANDON EXISTING M.H. OR H.H.

DATE	DESCRIPTION	CHKD. BY

PLC. UNDERGROUND FACILITIES
 BAGLEY & 14TH ST. BRIDGES

DRAWN BY RUC	FILE NO. SI-0452
CHECKED BY GJ	SHEET NO. 1 OF
APPROVED BY	DATE 7-7-71

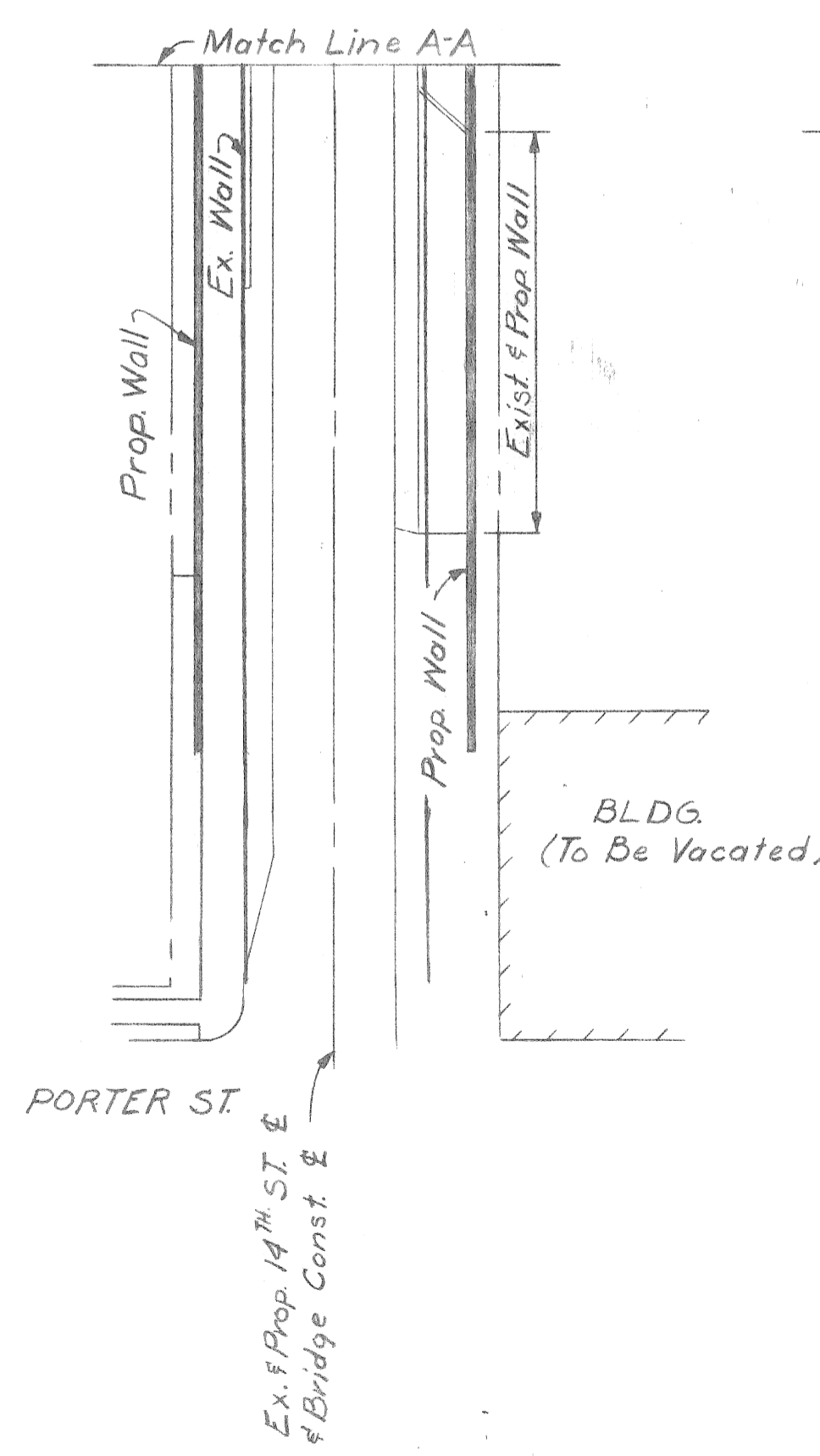
**PUBLIC LIGHTING
 COMMISSION
 CITY OF DETROIT**



GENERAL NOTES:

The work covered by these plans includes the removal of existing 14th St. bridge and walls, construction of new 14th St. bridge, walls, and approaches, exclusive of approach paving and utility alterations.

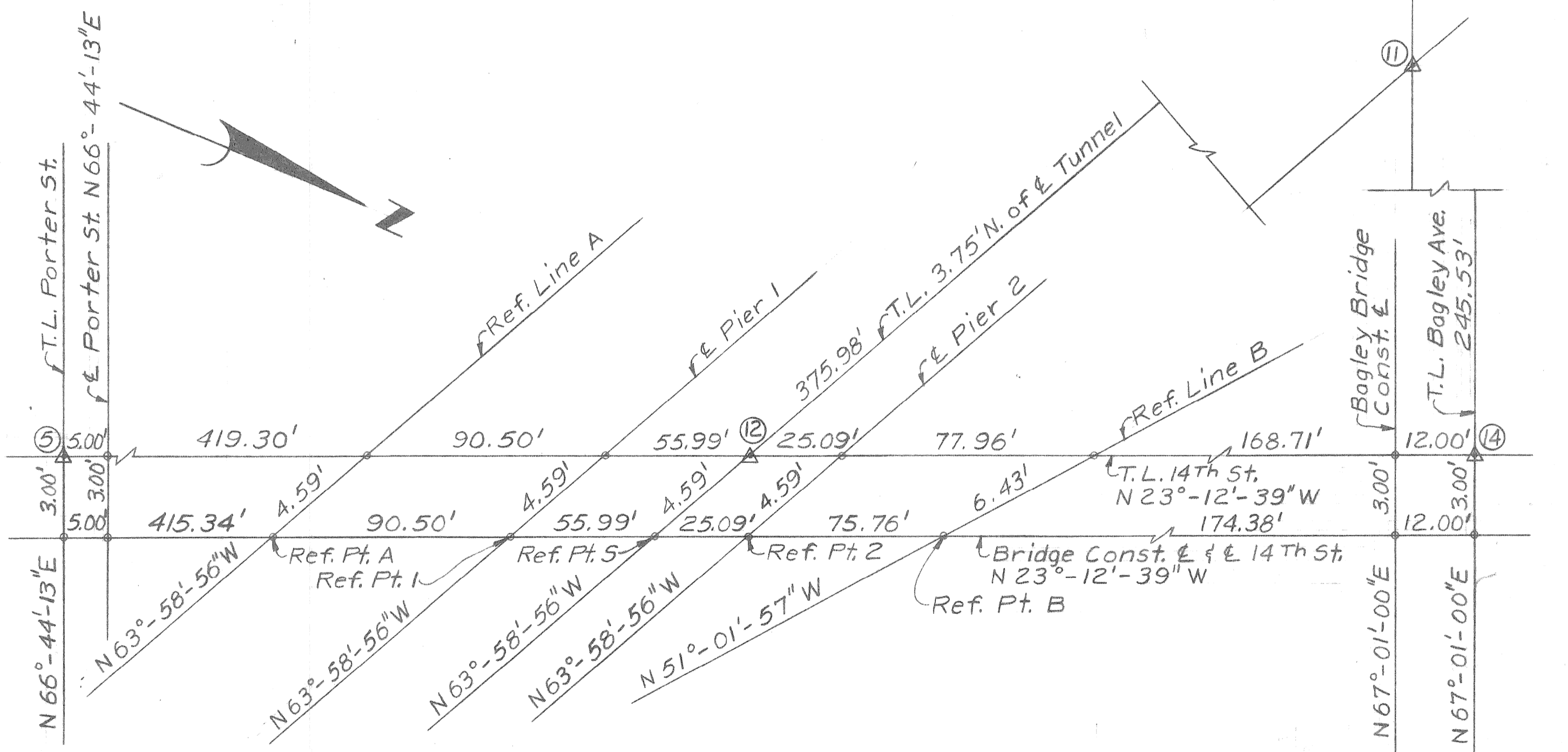
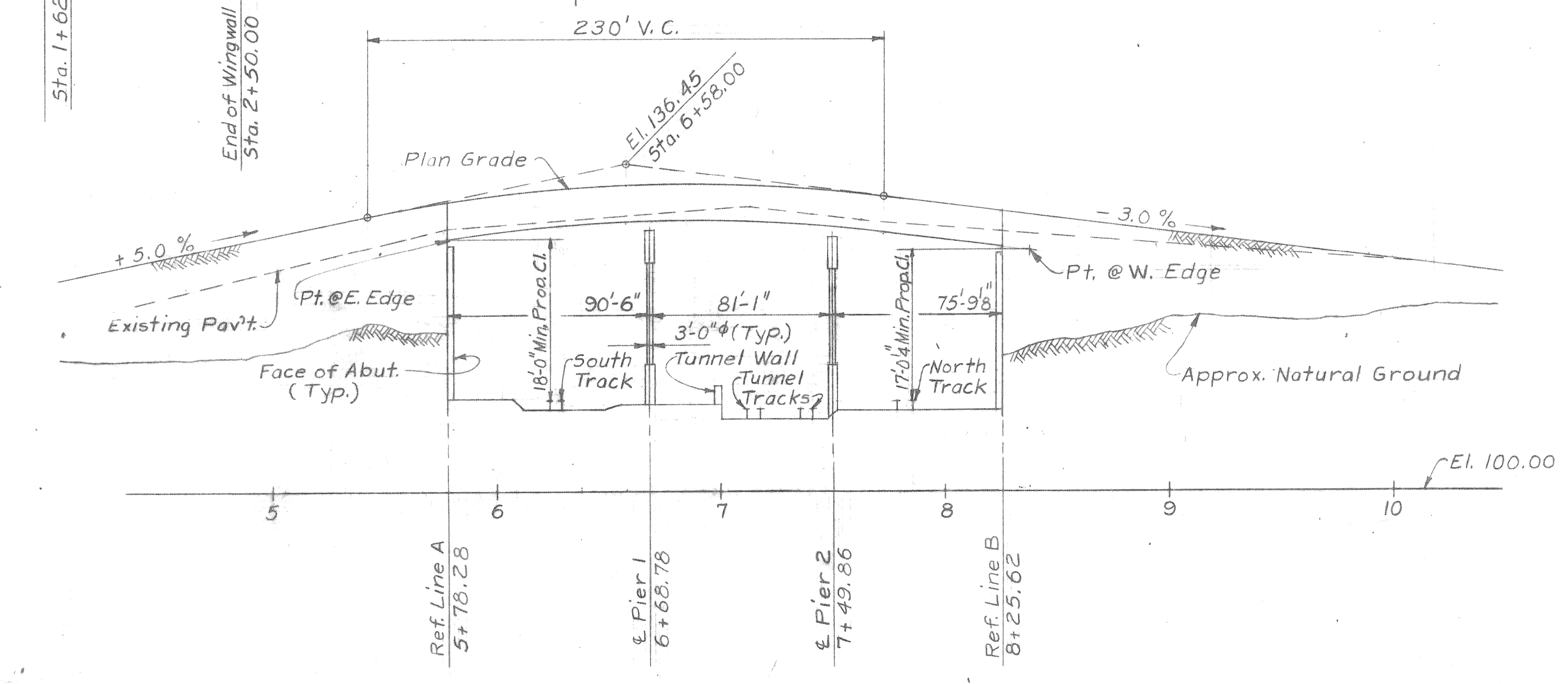
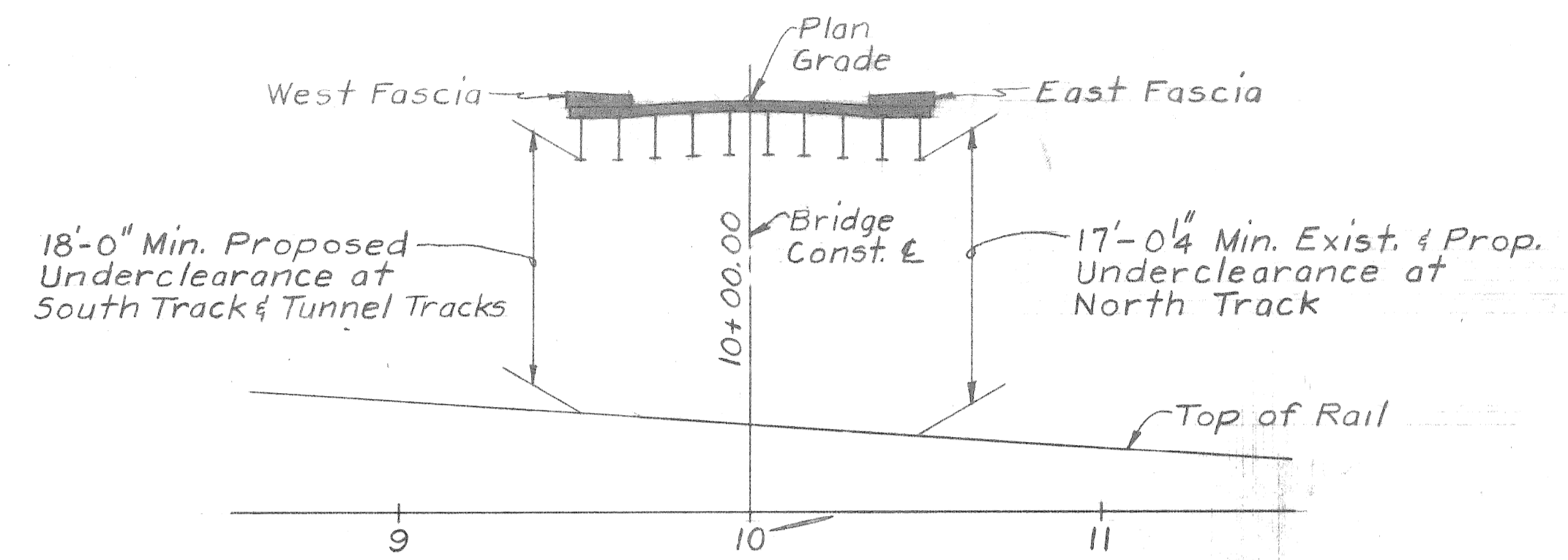
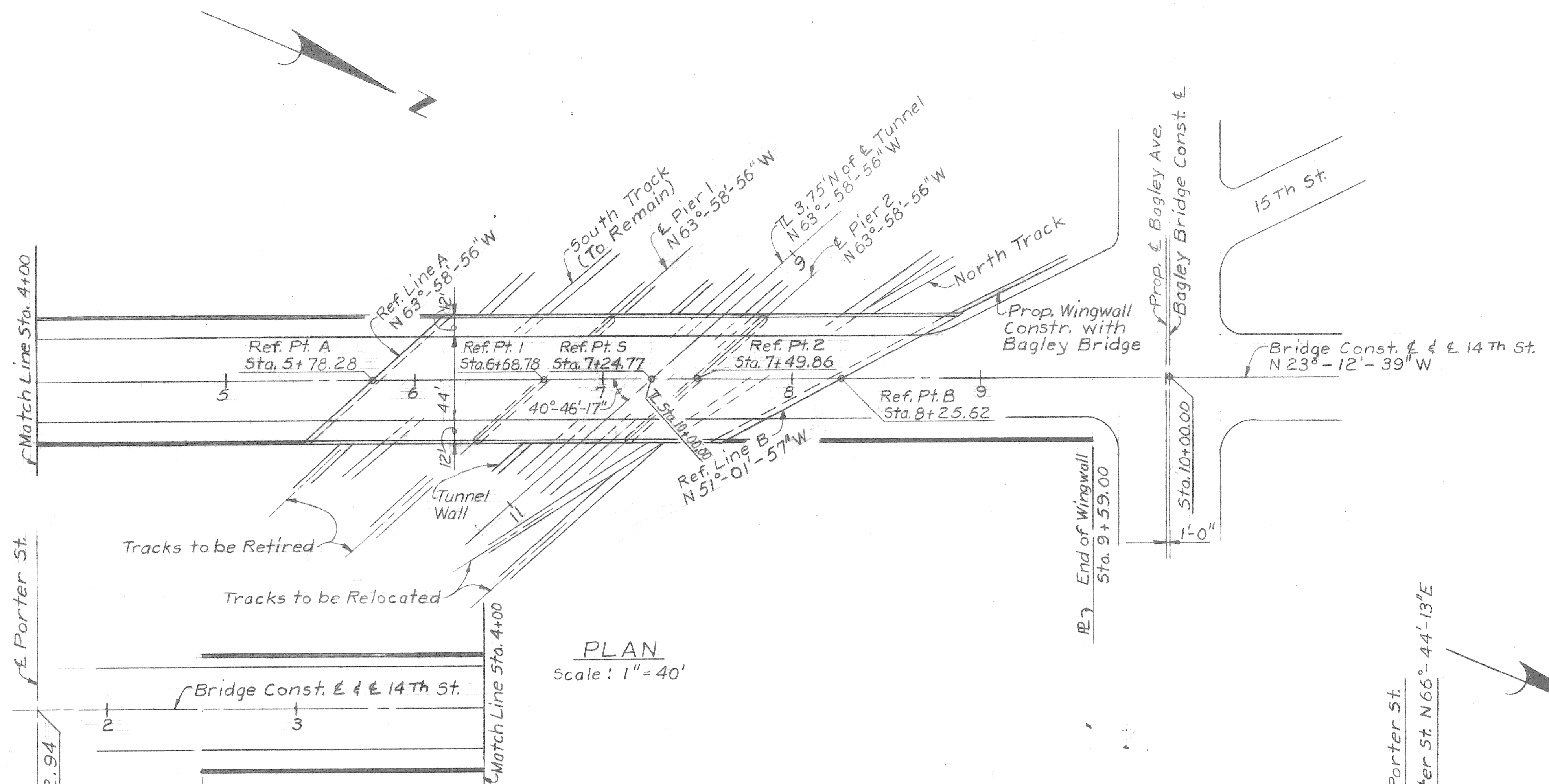
Topography shown hereon represents conditions existing at the time the field survey was made. However, these conditions may have been materially altered by the operations of others before the work has been started.



SURVEY PLAN
Scale: 1"=40'

PRELIMINARY PLAN "A" DATED: 2-23-71

DESIGNED BY DRAWN BY J.E.W. TRACED BY CHECKED BY B.COMLY		APPROVED: CITY ENGINEER		CITY OF DETROIT DEPARTMENT OF PUBLIC WORKS CITY ENGINEERS OFFICE FOR DETROIT HOUSING COMMISSION			WEST SIDE INDUSTRIAL REHABILITATION PROJECT N ^o 2 14 TH ST. BRIDGE CROSSING THE P.C.R.R. GENERAL PLAN OF SITE			SHEET 1 OF 5 SHEETS CONTRACT JOB NO A01676 A DRWG No. DATE 1-71	
---	--	--------------------------------	--	--	--	--	---	--	--	---	--



CITY OF DETROIT BENCH MARKS

Number	Location	Elevation
18-255	4' S. of N. R. Howard St. & 4' W. of E. R. 18 Th St.	112.323
18-255-A	4' S. of N. R. Howard St. & 4' W. of E. R. 16 Th St.	111.299
19-254	5' N. of S. R. Newark & 5' W. of E. R. 18 Th St.	103.347
19-254-A	5' N. of S. R. Newark & 7' E. of W. R. 16 Th St.	111.882

NOTES:

- o Denotes point of intersection
 - △ Denotes point of intersection of traverse lines
 - ⊗ Number designation of traverse line intersections
- Elevations given are referred to City of Detroit Datum, which is 479.755 ft. above sea level.

PRELIMINARY PLAN "A" DATED: 2-23-71

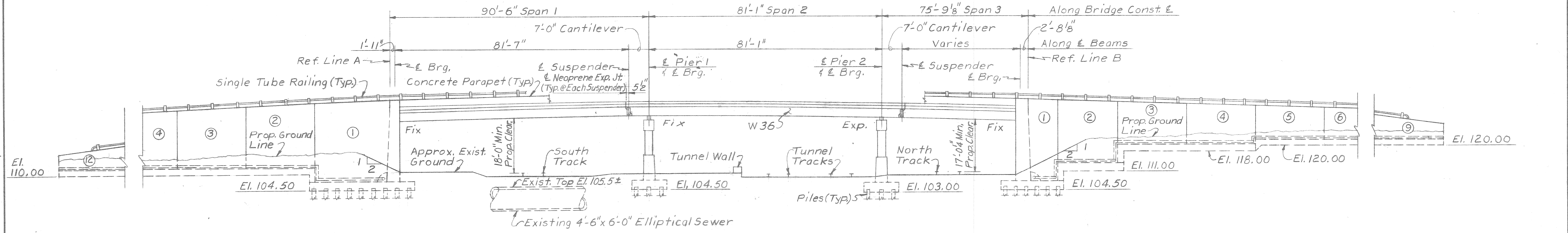
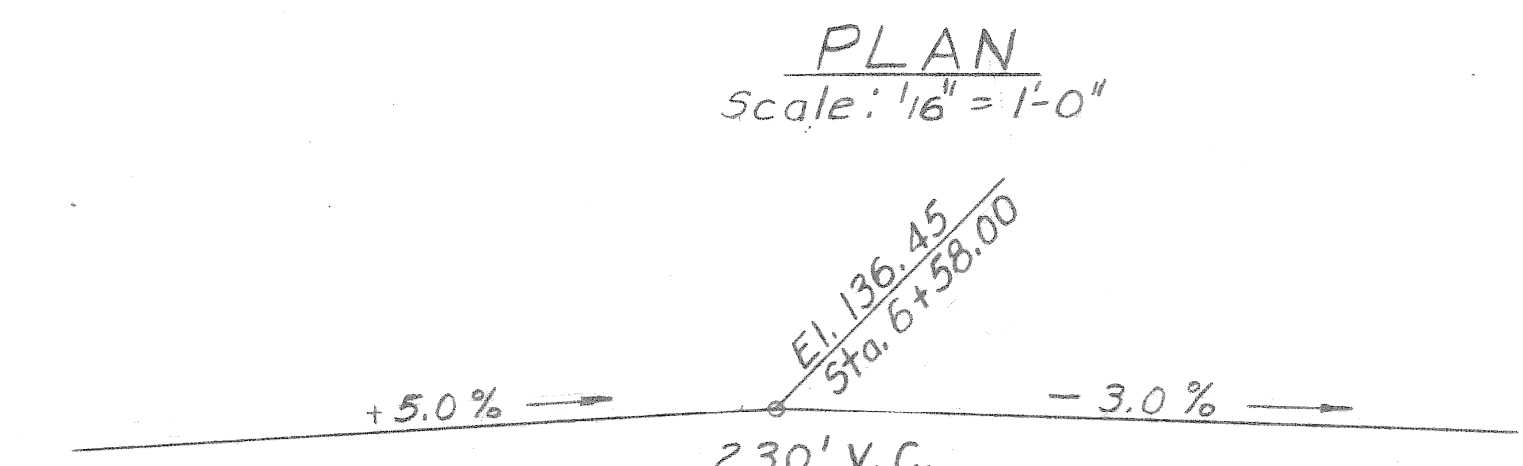
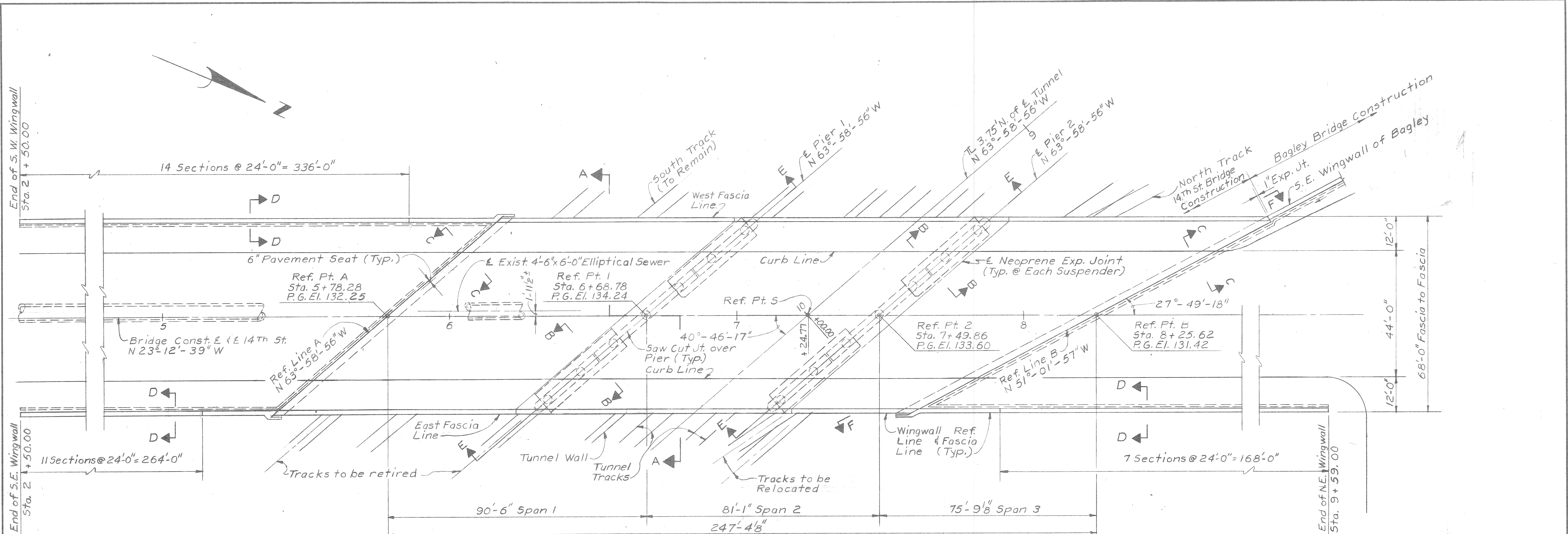
COORD.	DESCRIPTION	DRN	CKD	APVD	DATE

REFERENCE DRAWINGS	DESIGNED BY	APPROVED:
	J. J.	
	TRACED BY	
	CHECKED BY B. COMLY	

CITY OF DETROIT
DEPARTMENT OF PUBLIC WORKS
CITY ENGINEERS OFFICE
FOR
DETROIT HOUSING COMMISSION

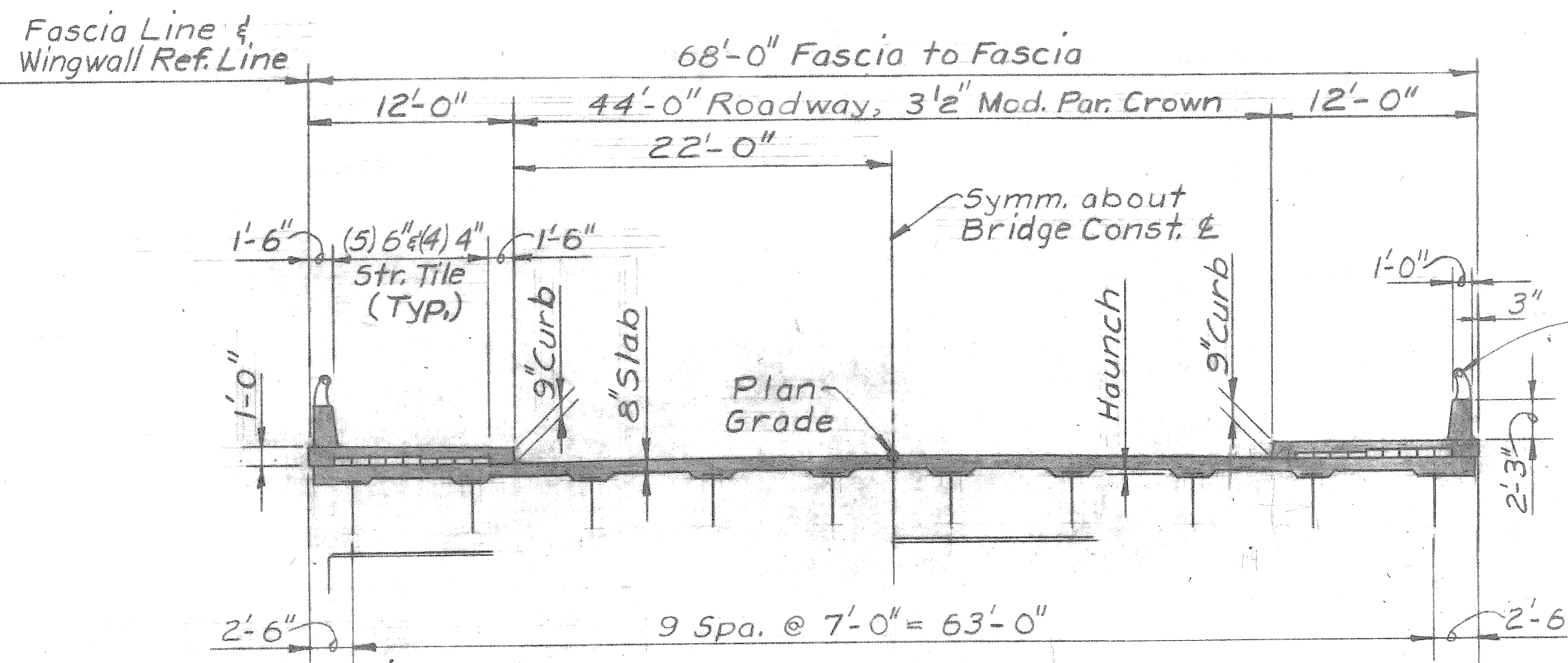
WEST SIDE INDUSTRIAL REHABILITATION PROJECT NO 2
14 TH ST. BRIDGE CROSSING THE P.C.R.R.
GENERAL DRAWING

SHEET 2 OF 5 SHEETS
JOB No A01676A
DRWG NO.
DATE 10-70

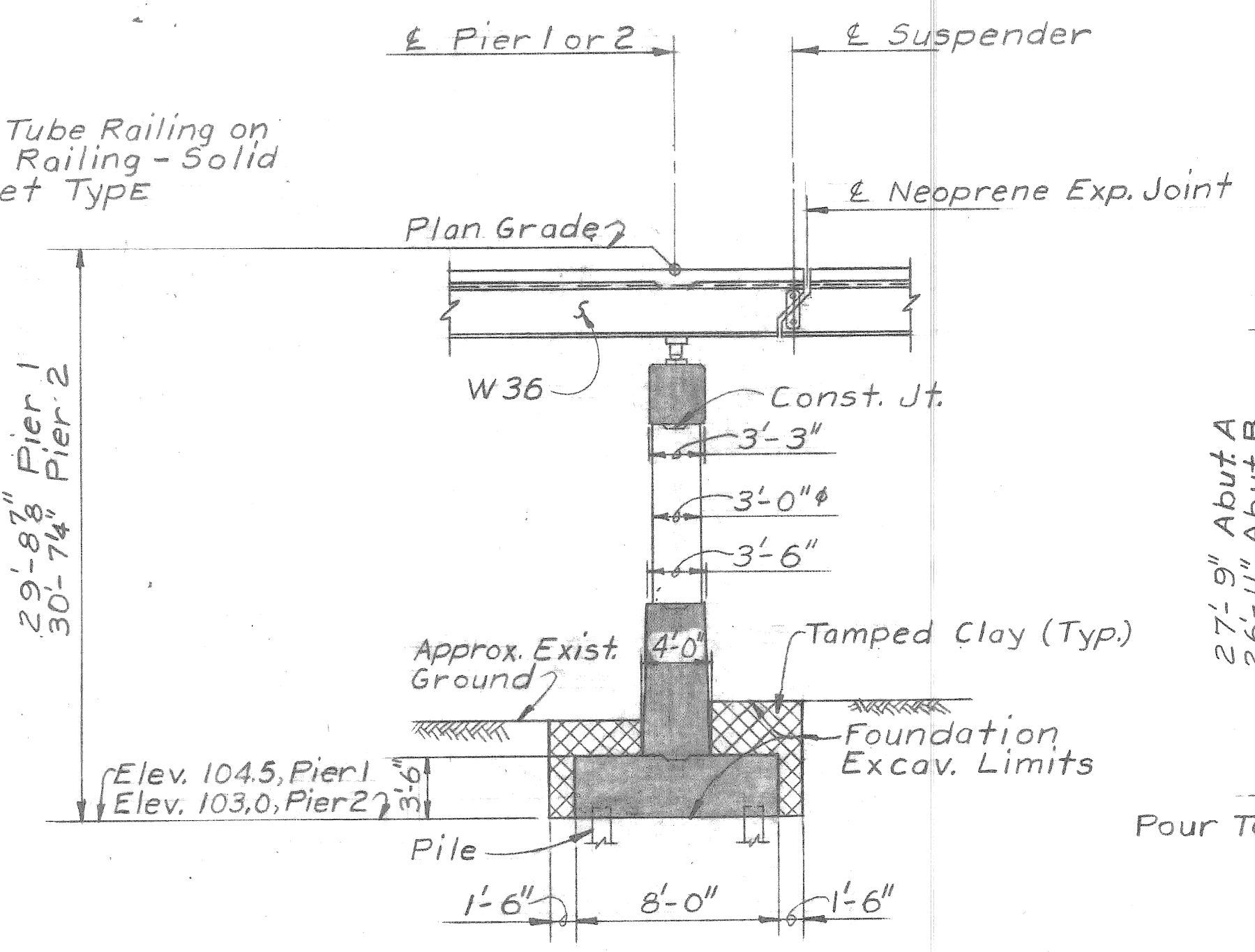


PRELIMINARY PLAN "A" DATED: 2-23-71

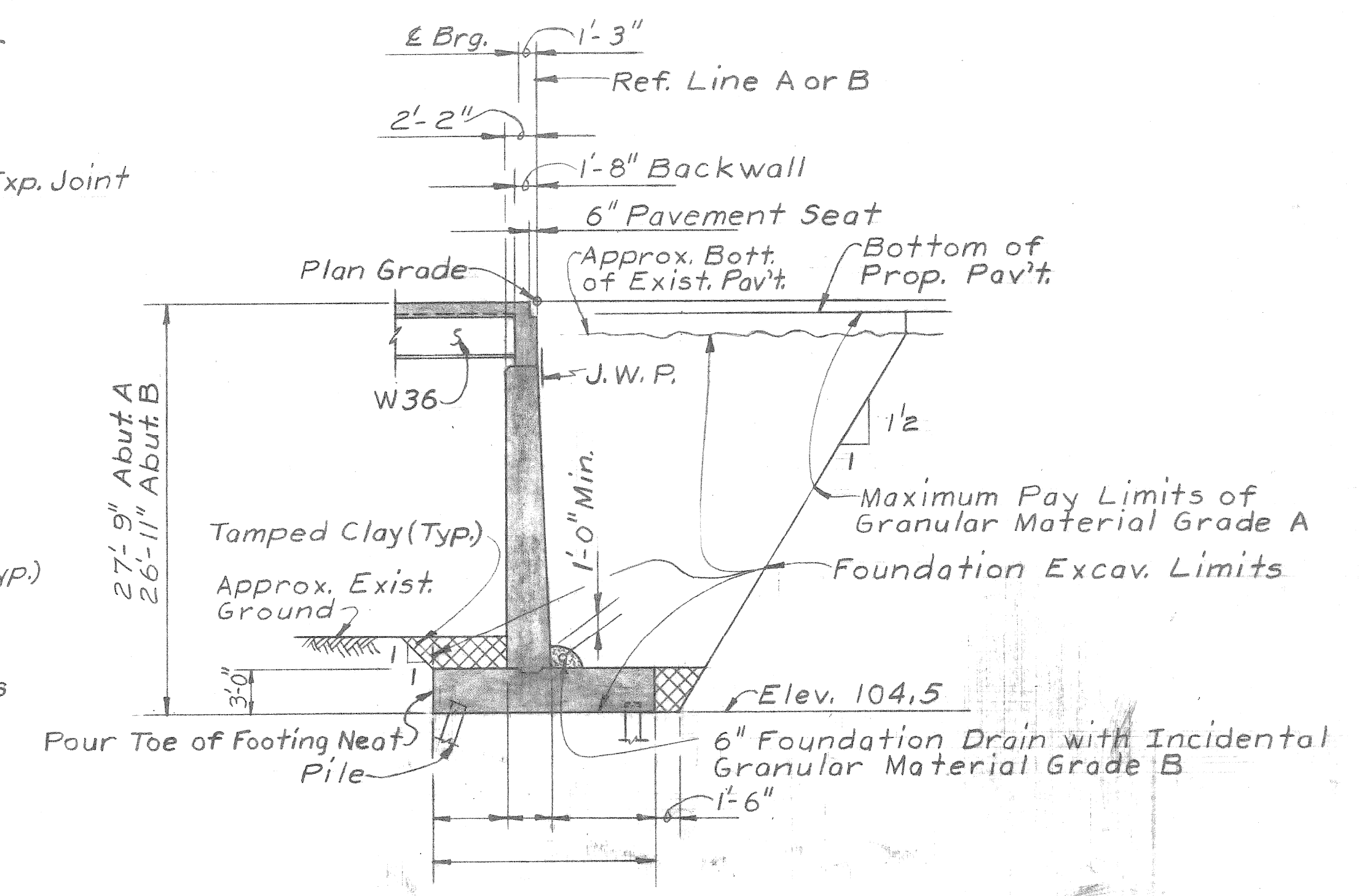
DESIGNED BY		APPROVED:		CITY OF DETROIT DEPARTMENT OF PUBLIC WORKS CITY ENGINEERS OFFICE FOR DETROIT HOUSING COMMISSION	WEST SIDE INDUSTRIAL REHABILITATION PROJECT NO 2 14 TH ST. BRIDGE CROSSING THE P.C.R.R. GENERAL PLAN OF STRUCTURE	SHEET 3 OF 5 SHEETS JOB No. A01676A DRWG No. DATE 1-71
DRAWN BY J. J.						
TRACED BY						
CHECKED BY B. COMLY		CITY ENGINEER				



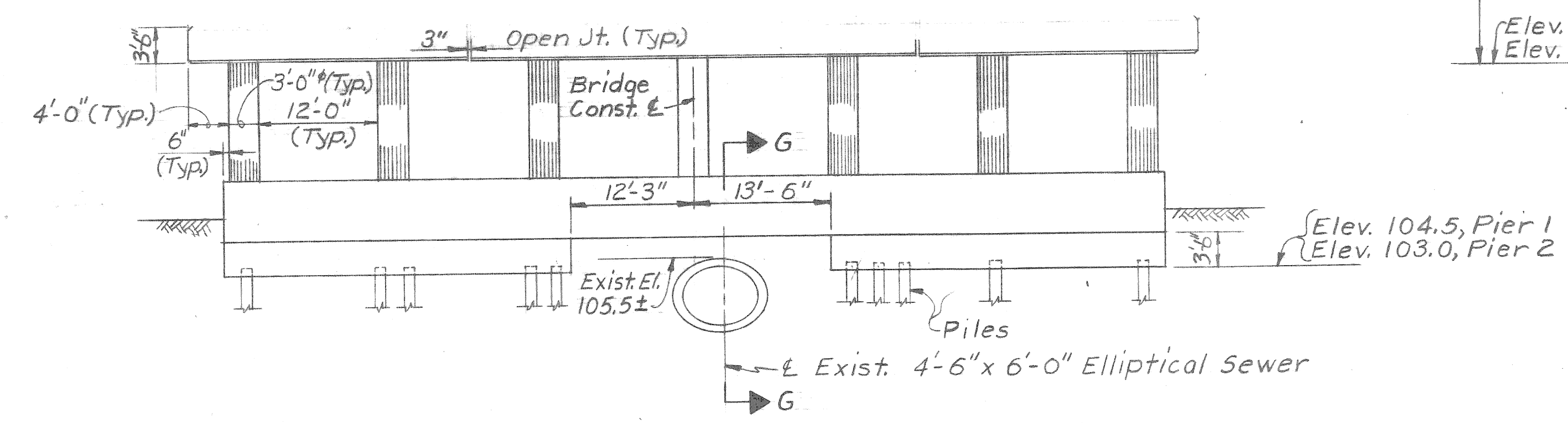
SECTION A-A
Scale: 1/8" = 1'-0"



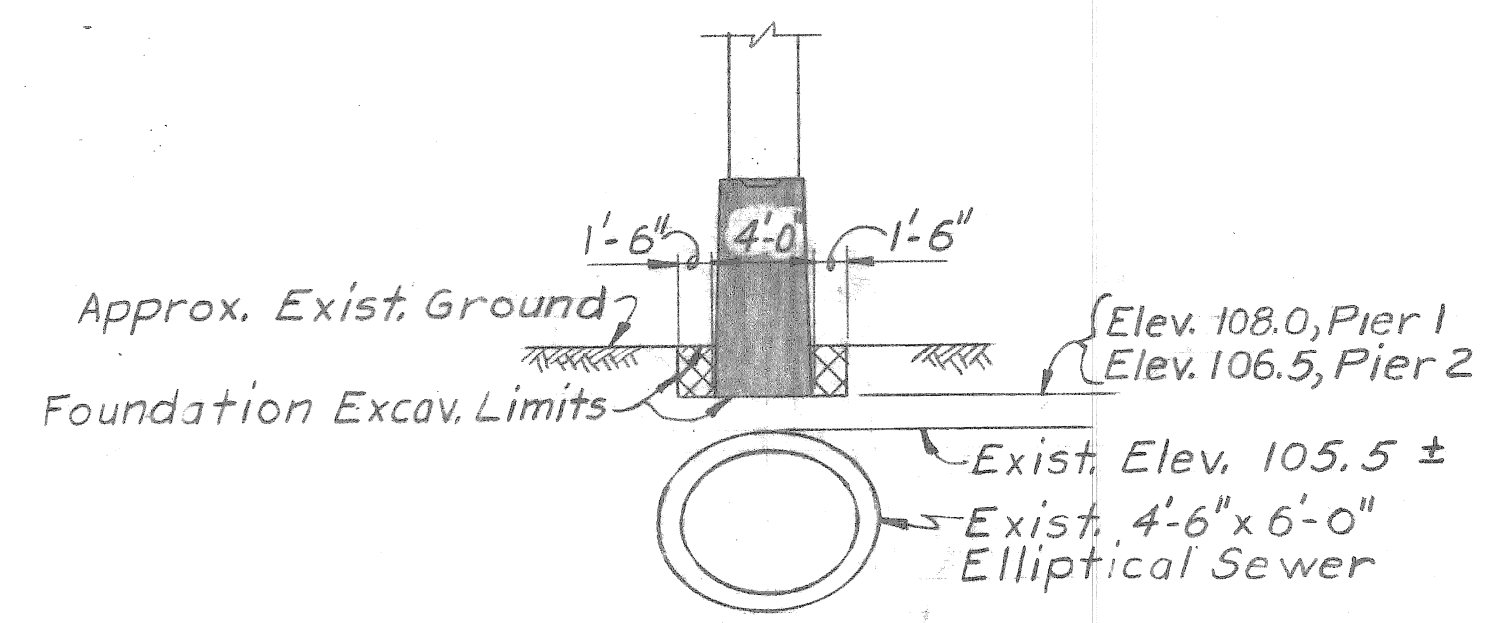
SECTION B-B
Scale: 1/8" = 1'-0"



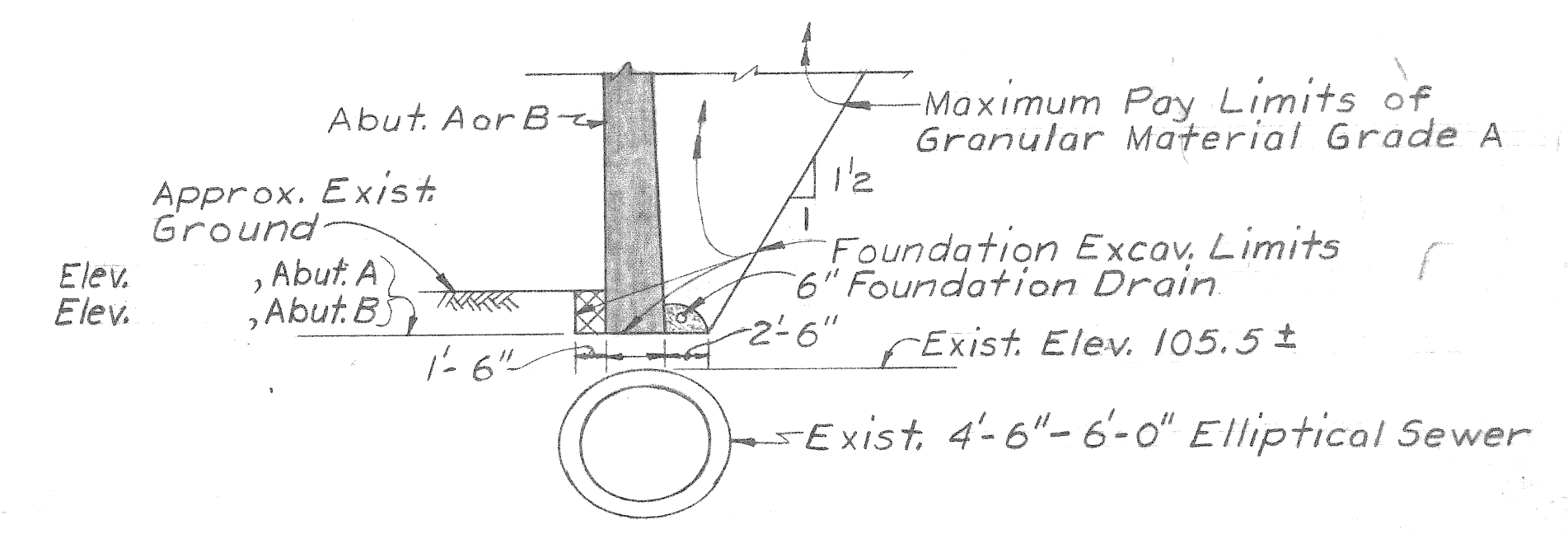
SECTION C-C
Scale: 1/8" = 1'-0"



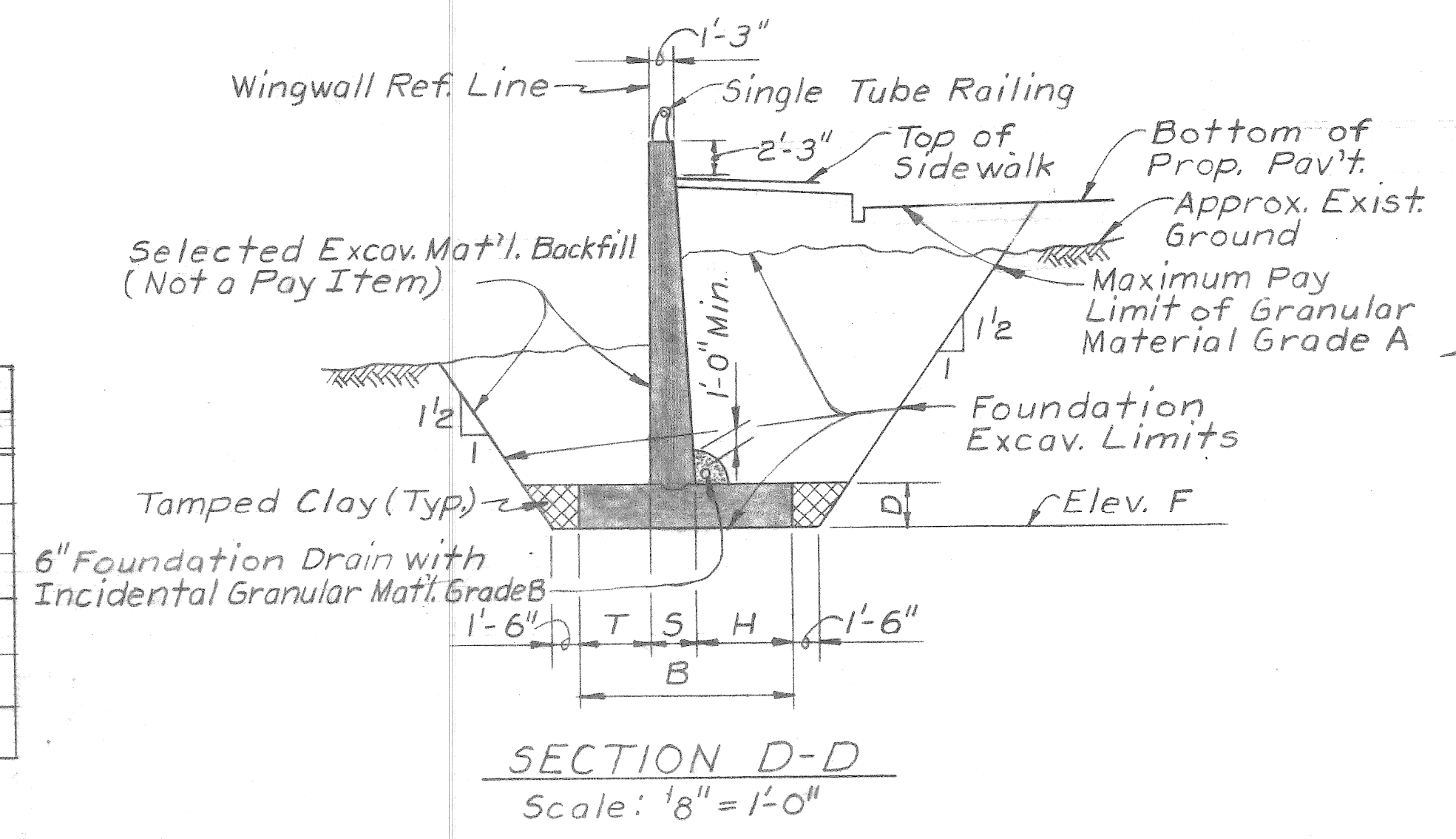
SECTION E-E
Scale: 3/32" = 1'-0"



SECTION G-G
Scale: 1/8" = 1'-0"



SECTION H-H
Scale: 1/8" = 1'-0"



SECTION D-D
Scale: 1/8" = 1'-0"

GENERAL NOTES:
 The design of this structure is based on current AASHTO Standard Specifications for Highway Bridges, H520-44 loading.
 Live load plus impact deflection = 1/1000 of span length and 1/350 of cantilever arm.
 Top of roadway slab and top of curbs are parallel to the vertical curve.
 Tamped Clay is incidental to foundation excavation.
 Granular Material Grade B is incidental to Foundation Drain.
 P.G. denotes Plan Grade.
 J.W.P. denotes Joint Water Proofing.

Wingwalls Dimensions	Southwest Wingwall Sections																Southeast Wingwall Sections												Northeast Wingwall Sections																		
	1	2	3	4	5	6	7	8	9	10	11	12	13	14	15	16	1	2	3	4	5	6	7	8	9	10	11	12	1	2	3	4	5	6	7	8	9										
T																																															
S																																															
H																																															
B																																															
D																																															
Elev. F																																															

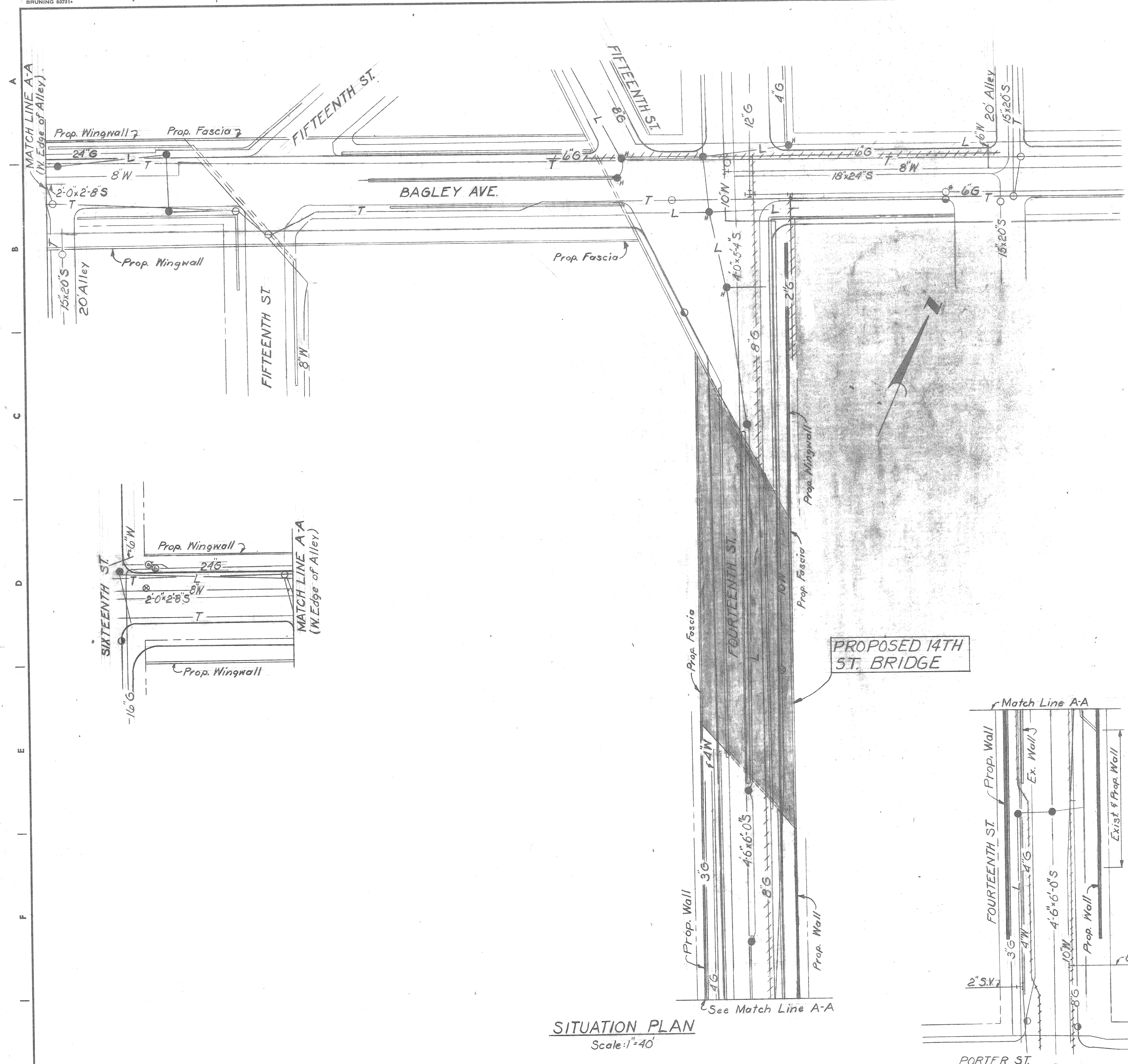
CITY OF DETROIT
 DEPARTMENT OF PUBLIC WORKS
 CITY ENGINEERS OFFICE
 FOR
 DETROIT HOUSING COMMISSION

WEST SIDE INDUSTRIAL REHABILITATION PROJECT NO 2
 14 TH ST. BRIDGE CROSSING THE P.C.R.R.
 GENERAL PLAN OF STRUCTURE

SHEET 4 OF 5 SHEETS
 JOB No. A01676A
 DRWG No.
 DATE 1-71

PRELIMINARY PLAN "A" DATED: 2-23-71

DESIGNED BY	J. J.	APPROVED:	
DRAWN BY	J. J.		
TRACED BY			
CHECKED BY	B. COMLY	CITY ENGINEER	



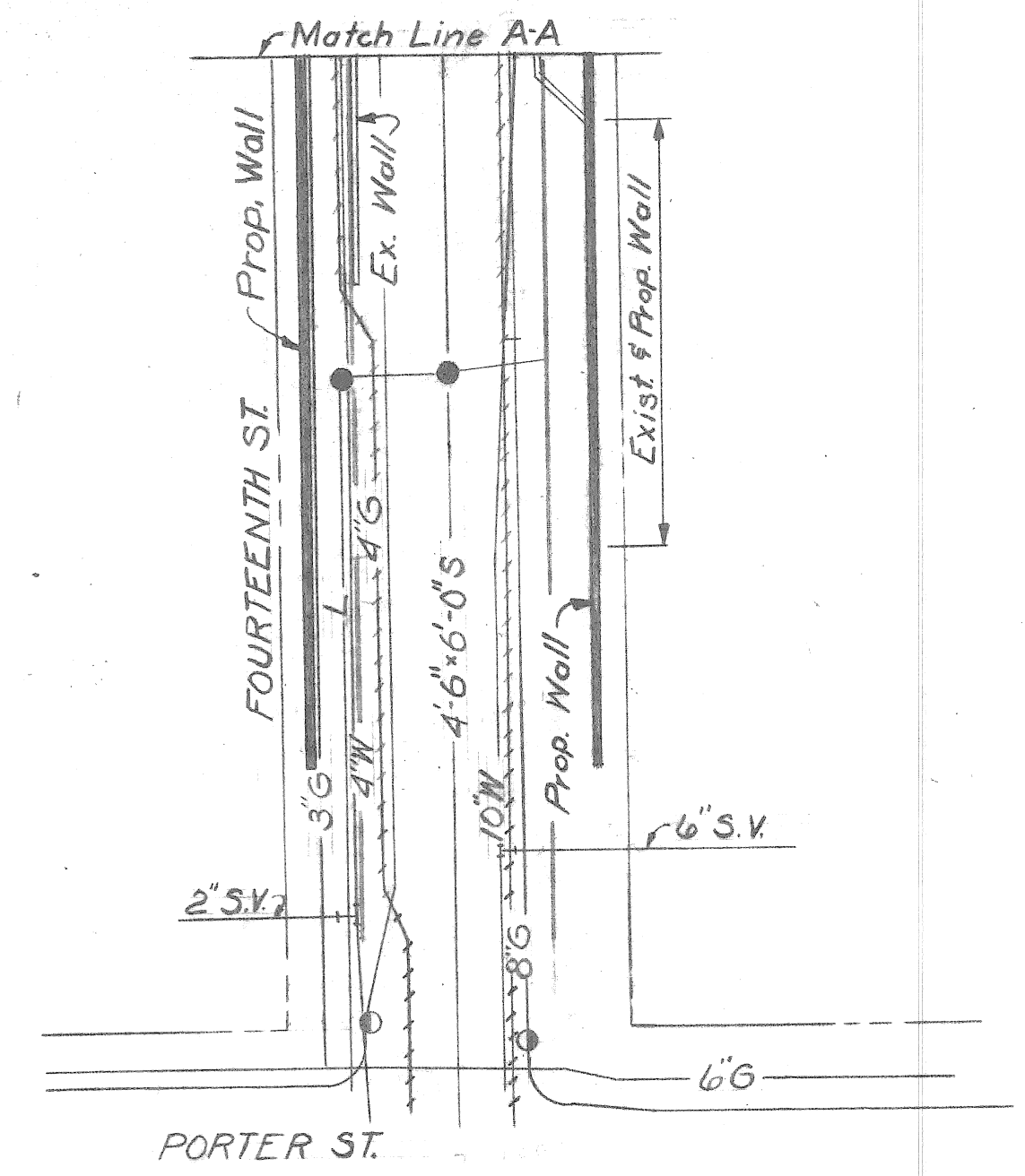
UTILITY
 DETROIT WATER DEPARTMENT
 CITY OF DETROIT SEWERS
 MICHIGAN CONSOLIDATED GAS CO.
 MICHIGAN BELL TELEPHONE CO.
 PUBLIC LIGHTING COMMISSION

-LEGEND-

EXISTING	DELETE OR ABANDONED	NEW WORK BY OTHERS	NEW WORK BY CONTRACTOR
—W—			
—S—			
—G—	++++G++++		
—T—			
—L—			

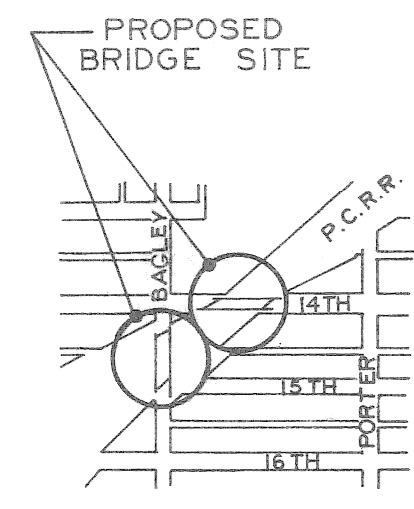
PROPOSED 14TH ST. BRIDGE

SITUATION PLAN
 Scale: 1"=40'

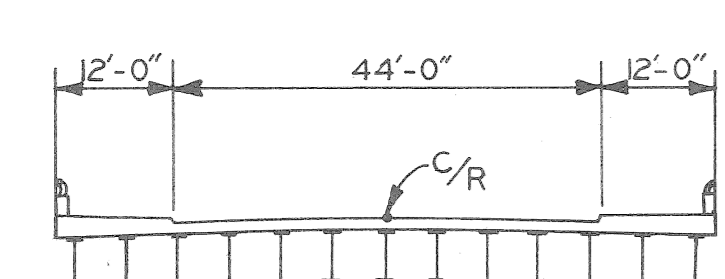
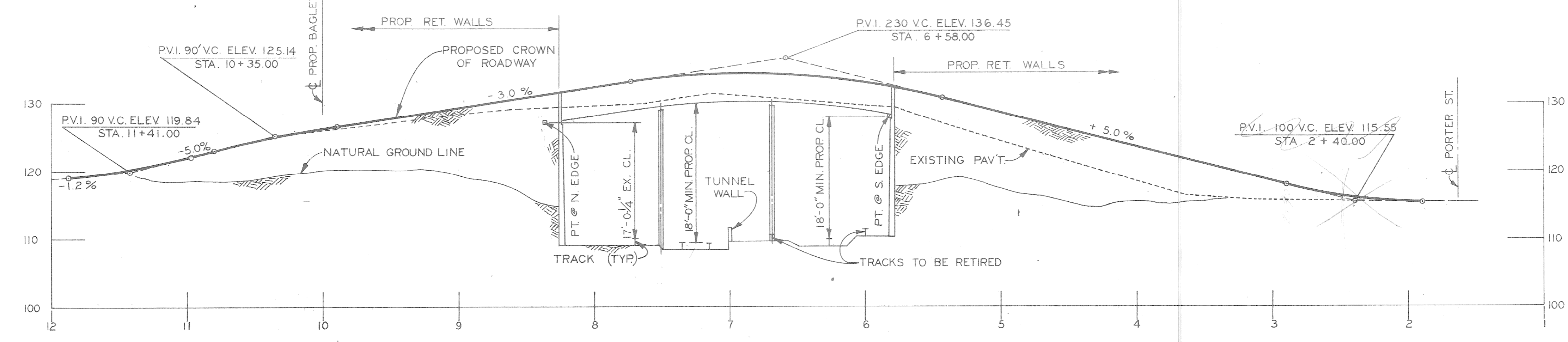


PRELIMINARY PLAN "A" DATED: 2-23-71

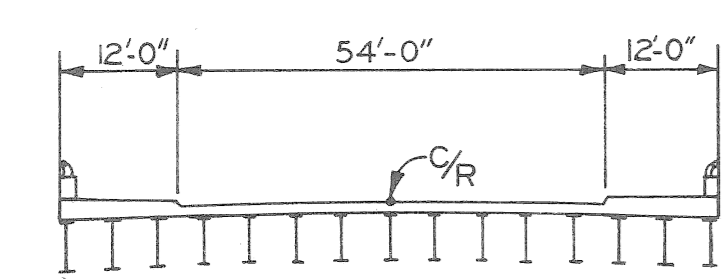
DESIGNED BY DRAWN BY J.E.W. TRACED BY CHECKED BY B. COMLY		APPROVED: CITY ENGINEER		CITY OF DETROIT DEPARTMENT OF PUBLIC WORKS CITY ENGINEERS OFFICE FOR DETROIT HOUSING COMMISSION			WEST SIDE INDUSTRIAL REHABILITATION PROJECT N°2 14 TH ST. BRIDGE CROSSING THE P.C.R.R. EXISTING UTILITIES AND PROPOSED ALTERATIONS			SHEET 5 OF 5 SHEETS JOB N° AO1676A DRWG No. DATE 11/19/70	
REVISIONS LOCATED BY COORDINATES ON SHEET											



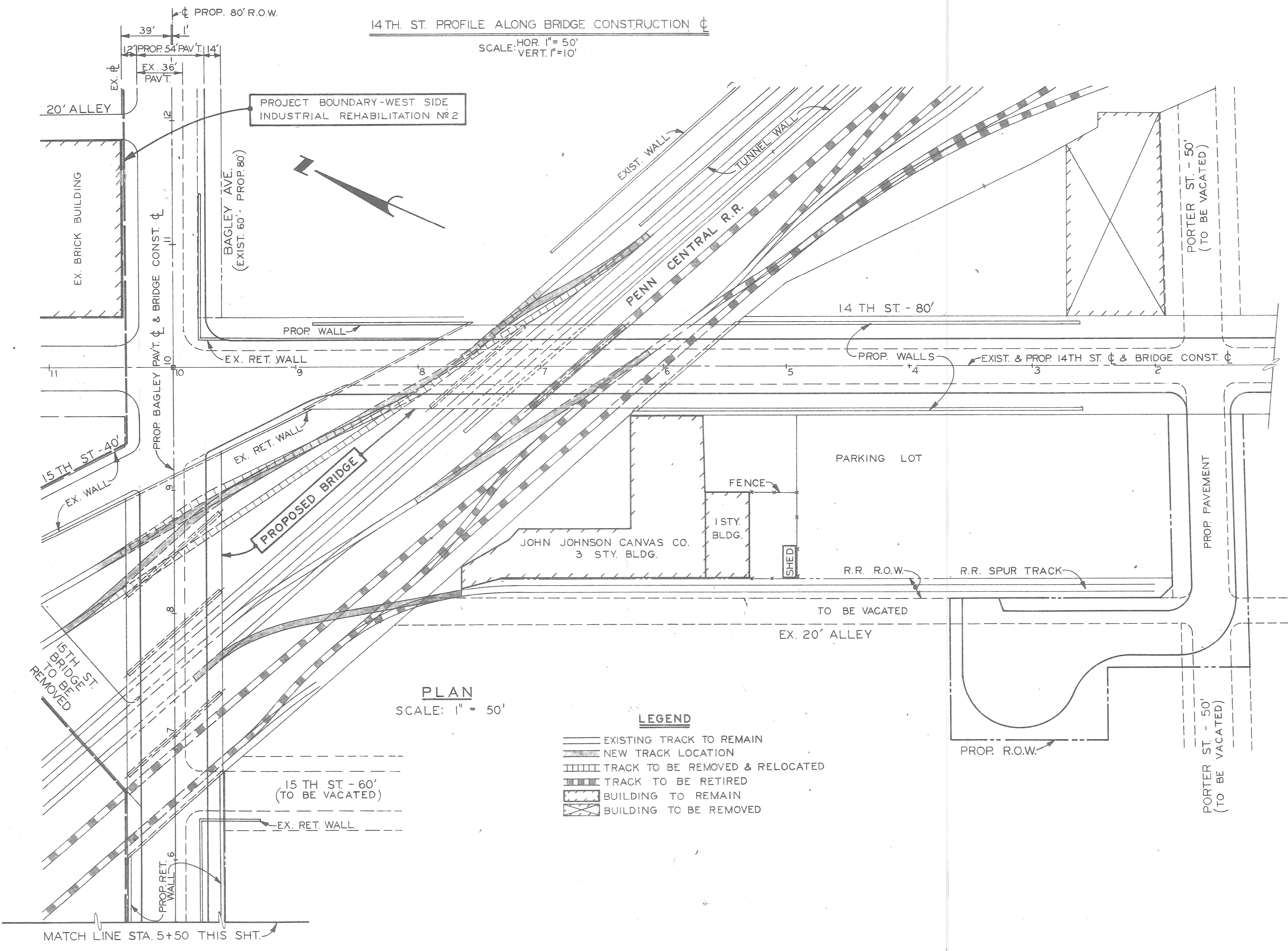
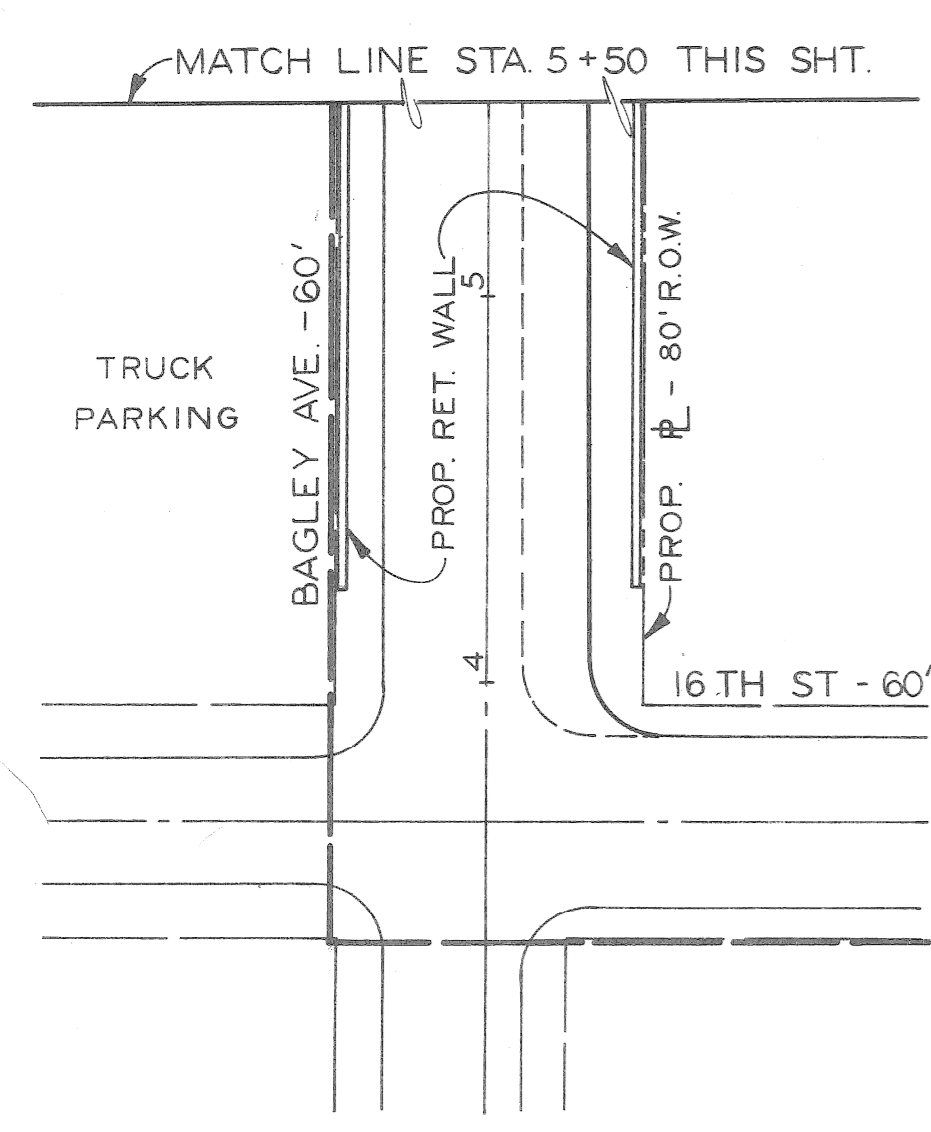
LOCATION PLAN



TYPICAL CROSS-SECTION
14 TH. ST. BRIDGE
NO SCALE

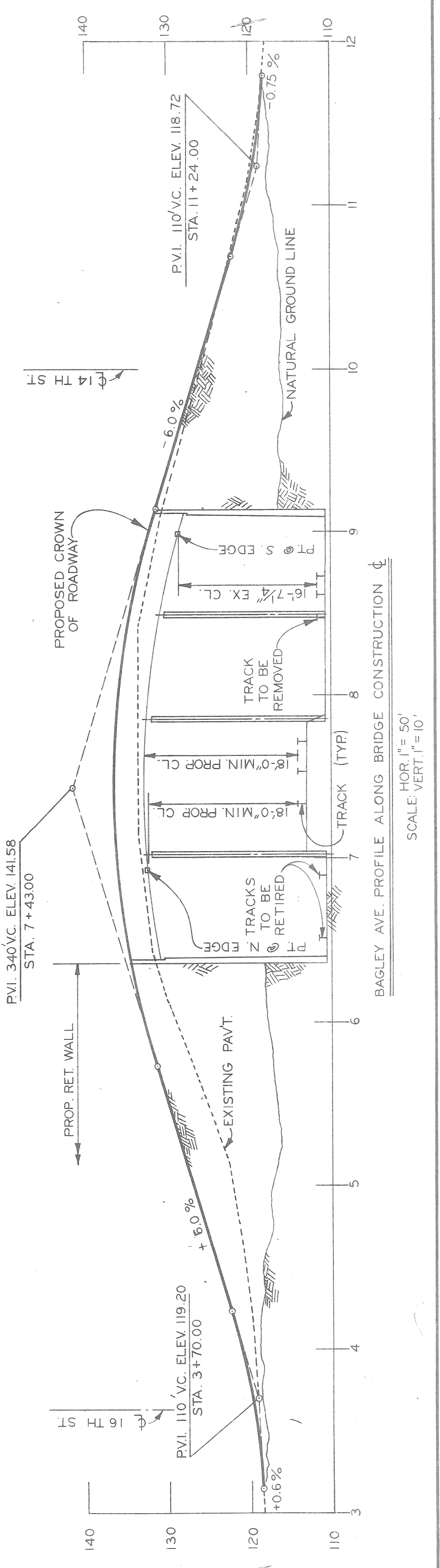


TYPICAL CROSS-SECTION
BAGLEY AVE. BRIDGE
NO SCALE



PLAN
SCALE: 1" = 50'

- LEGEND**
- EXISTING TRACK TO REMAIN
 - NEW TRACK LOCATION
 - ▨ TRACK TO BE REMOVED & RELOCATED
 - ▧ TRACK TO BE RETIRED
 - ▩ BUILDING TO REMAIN
 - BUILDING TO BE REMOVED



COORD.	DESCRIPTION	DRW.	CHK'D.	APVD.	DATE

REVISIONS LOCATED BY COORDINATES ON SHEET

DESIGNED BY	M.A.P.	APPROVED:	
DRAWN BY		CITY ENGINEER	
TRACED BY			
CHECKED BY	G.J.H.		

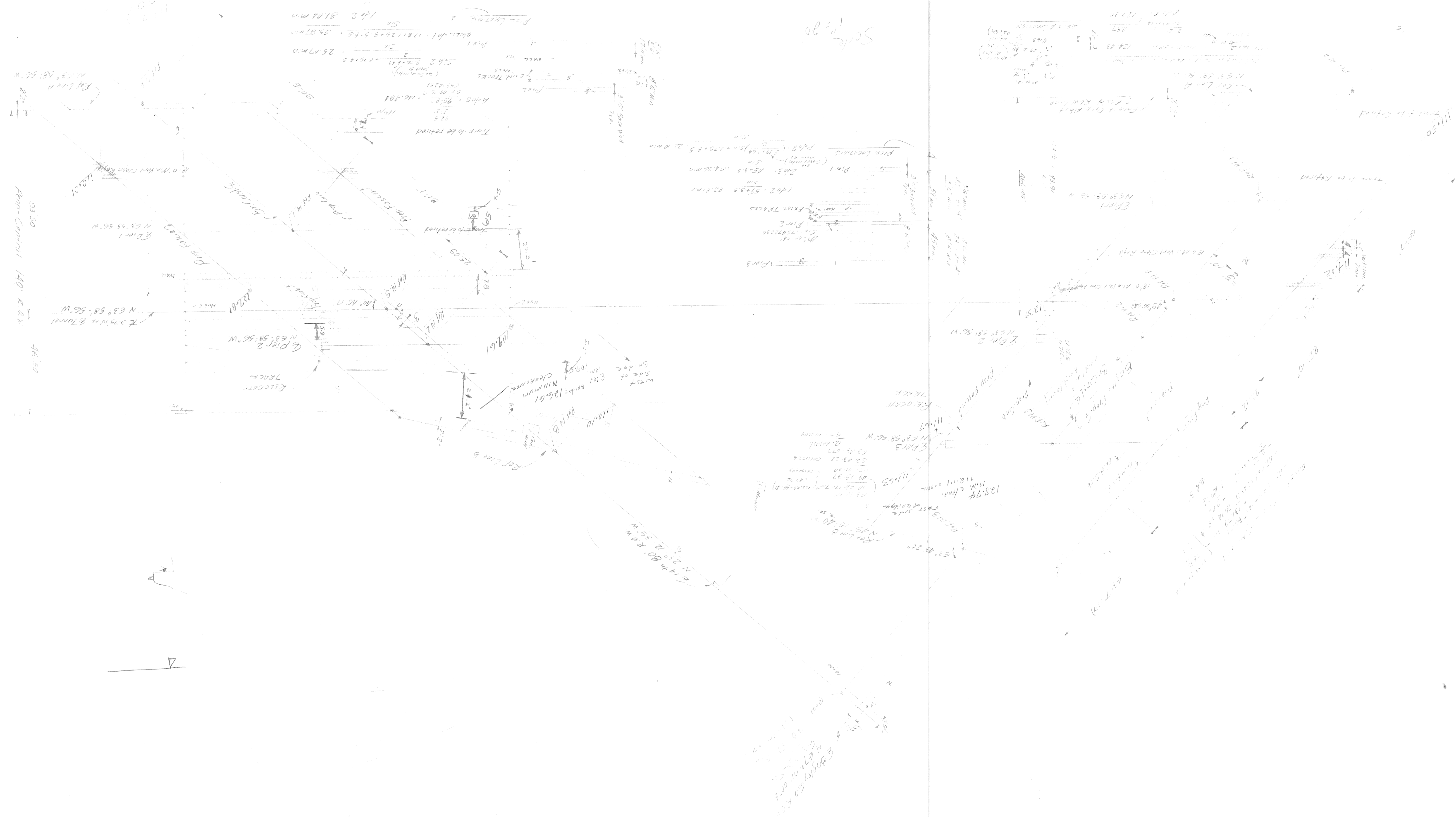
CITY OF DETROIT
 DEPARTMENT OF PUBLIC WORKS
 CITY ENGINEERS OFFICE
 FOR
 DETROIT HOUSING COMMISSION

WEST SIDE INDUSTRIAL REHABILITATION PROJECT N°2
 14 TH ST. & BAGLEY AVE. BRIDGES CROSSING THE P.C.R.R.
 GENERAL DRAWING

SHEET 1 OF 1 SHEETS
CONTRACT NO.
DRWG NO.
DATE 9-22-70

1675 A/C

VOID
 INFO 0/18
 STUDY
 12.5M LIND. 12.5M
 BRIDGE 14M
 GENERAL PLAN
 2014



Scale 1" = 20'



Scale 1" = 20'