

74'-6 1/2" (W30 x 108 x 74'-6 1/2") (SEE CAMBER DIAGRAM)
64'-3 7/16"

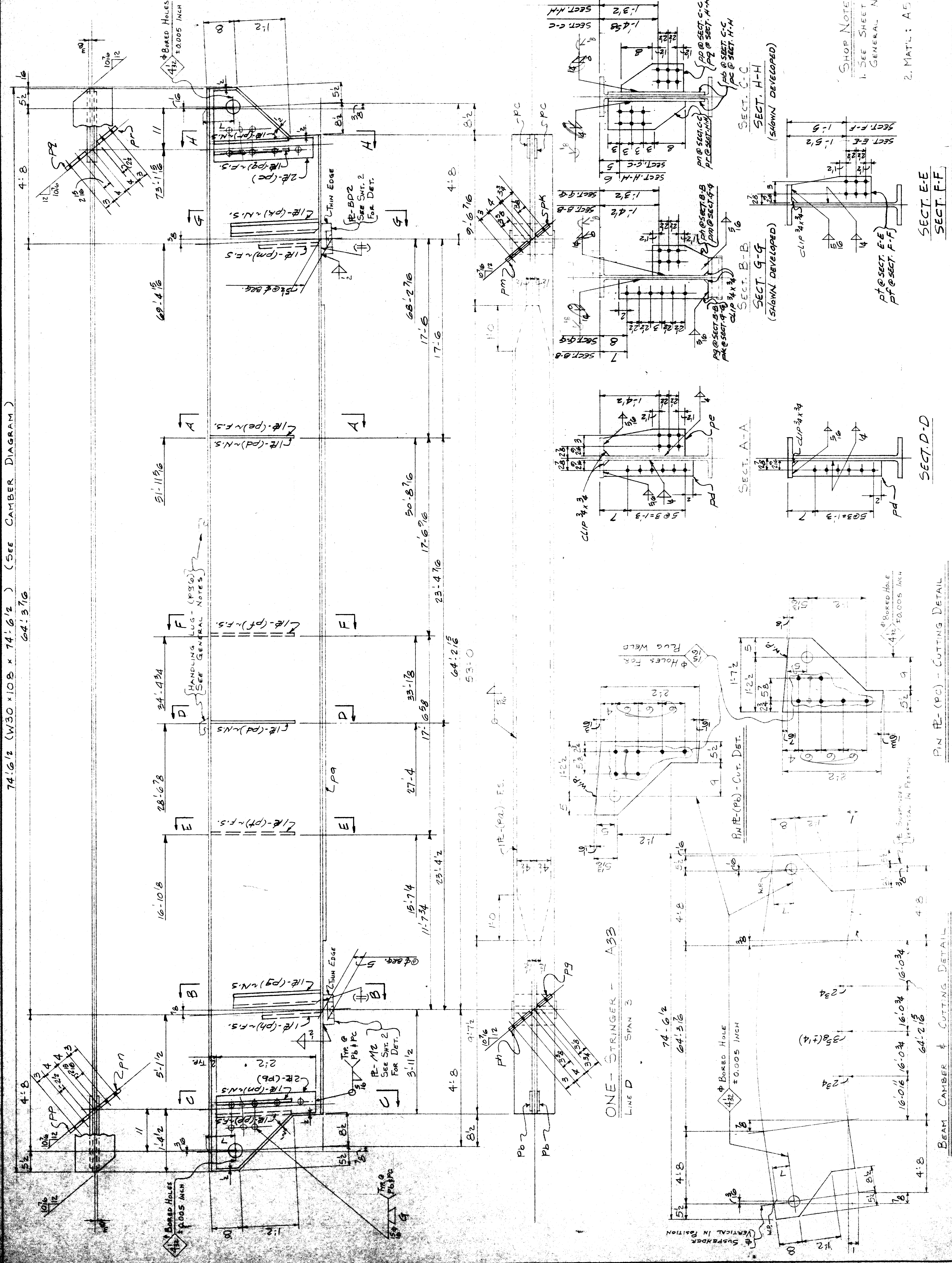
LINE	NO.	DESCRIPTION	QUANTITY	REMARKS
1	1	STRINGER	74'-6 1/2"	A33
2	1	W30 x 108	74'-6 1/2"	CVN
3	1	R 1/4"	53'-0"	CVN
4	2	R 2 1/4"	2'-2 1/4"	CVN
5	2	R 1/4"	2'-2 1/4"	PC
6	2	R 1/4"	1'-11 1/4"	PC
7	1	R 1/4"	1'-11 1/4"	PC
8	1	R 1/4"	1'-11 1/4"	PC
9	1	R 1/4"	1'-11 1/4"	PC
10	1	R 1/4"	1'-11 1/4"	PC
11	1	R 1/4"	1'-11 1/4"	PC
12	1	R 1/4"	1'-11 1/4"	PC
13	1	R 1/4"	1'-11 1/4"	PC
14	1	R 1/4"	1'-11 1/4"	PC
15	1	R 1/4"	1'-11 1/4"	PC
16	1	R 1/4"	1'-11 1/4"	PC
17	1	R 1/4"	1'-11 1/4"	PC
18	1	R 1/4"	1'-11 1/4"	PC
19	1	R 1/4"	1'-11 1/4"	PC
20	1	R 1/4"	1'-11 1/4"	PC
21	1	R 1/4"	1'-11 1/4"	PC
22	1	R 1/4"	1'-11 1/4"	PC
23	1	R 1/4"	1'-11 1/4"	PC
24	1	R 1/4"	1'-11 1/4"	PC
25	1	R 1/4"	1'-11 1/4"	PC
26	1	R 1/4"	1'-11 1/4"	PC
27	1	R 1/4"	1'-11 1/4"	PC
28	1	R 1/4"	1'-11 1/4"	PC
29	1	R 1/4"	1'-11 1/4"	PC
30	1	R 1/4"	1'-11 1/4"	PC
31	1	R 1/4"	1'-11 1/4"	PC
32	1	R 1/4"	1'-11 1/4"	PC
33	1	R 1/4"	1'-11 1/4"	PC
34	1	R 1/4"	1'-11 1/4"	PC
35	1	R 1/4"	1'-11 1/4"	PC
36	1	R 1/4"	1'-11 1/4"	PC
37	1	R 1/4"	1'-11 1/4"	PC
38	1	R 1/4"	1'-11 1/4"	PC
39	1	R 1/4"	1'-11 1/4"	PC
40	1	R 1/4"	1'-11 1/4"	PC
41	1	R 1/4"	1'-11 1/4"	PC
42	1	R 1/4"	1'-11 1/4"	PC
43	1	R 1/4"	1'-11 1/4"	PC
44	1	R 1/4"	1'-11 1/4"	PC
45	1	R 1/4"	1'-11 1/4"	PC
46	1	R 1/4"	1'-11 1/4"	PC
47	1	R 1/4"	1'-11 1/4"	PC
48	1	R 1/4"	1'-11 1/4"	PC
49	1	R 1/4"	1'-11 1/4"	PC
50	1	R 1/4"	1'-11 1/4"	PC
51	1	R 1/4"	1'-11 1/4"	PC
52	1	R 1/4"	1'-11 1/4"	PC
53	1	R 1/4"	1'-11 1/4"	PC
54	1	R 1/4"	1'-11 1/4"	PC
55	1	R 1/4"	1'-11 1/4"	PC
56	1	R 1/4"	1'-11 1/4"	PC
57	1	R 1/4"	1'-11 1/4"	PC
58	1	R 1/4"	1'-11 1/4"	PC
59	1	R 1/4"	1'-11 1/4"	PC
60	1	R 1/4"	1'-11 1/4"	PC
61	1	R 1/4"	1'-11 1/4"	PC
62	1	R 1/4"	1'-11 1/4"	PC
63	1	R 1/4"	1'-11 1/4"	PC
64	1	R 1/4"	1'-11 1/4"	PC
65	1	R 1/4"	1'-11 1/4"	PC
66	1	R 1/4"	1'-11 1/4"	PC
67	1	R 1/4"	1'-11 1/4"	PC
68	1	R 1/4"	1'-11 1/4"	PC
69	1	R 1/4"	1'-11 1/4"	PC
70	1	R 1/4"	1'-11 1/4"	PC
71	1	R 1/4"	1'-11 1/4"	PC
72	1	R 1/4"	1'-11 1/4"	PC
73	1	R 1/4"	1'-11 1/4"	PC
74	1	R 1/4"	1'-11 1/4"	PC
75	1	R 1/4"	1'-11 1/4"	PC
76	1	R 1/4"	1'-11 1/4"	PC
77	1	R 1/4"	1'-11 1/4"	PC
78	1	R 1/4"	1'-11 1/4"	PC
79	1	R 1/4"	1'-11 1/4"	PC
80	1	R 1/4"	1'-11 1/4"	PC
81	1	R 1/4"	1'-11 1/4"	PC
82	1	R 1/4"	1'-11 1/4"	PC
83	1	R 1/4"	1'-11 1/4"	PC
84	1	R 1/4"	1'-11 1/4"	PC
85	1	R 1/4"	1'-11 1/4"	PC
86	1	R 1/4"	1'-11 1/4"	PC
87	1	R 1/4"	1'-11 1/4"	PC
88	1	R 1/4"	1'-11 1/4"	PC
89	1	R 1/4"	1'-11 1/4"	PC
90	1	R 1/4"	1'-11 1/4"	PC
91	1	R 1/4"	1'-11 1/4"	PC
92	1	R 1/4"	1'-11 1/4"	PC
93	1	R 1/4"	1'-11 1/4"	PC
94	1	R 1/4"	1'-11 1/4"	PC
95	1	R 1/4"	1'-11 1/4"	PC
96	1	R 1/4"	1'-11 1/4"	PC
97	1	R 1/4"	1'-11 1/4"	PC
98	1	R 1/4"	1'-11 1/4"	PC
99	1	R 1/4"	1'-11 1/4"	PC
100	1	R 1/4"	1'-11 1/4"	PC

CITY OF DETROIT
CITY ENGINEERING DEPARTMENT
APPROVED

FOR CO. PLIANCE WITH CONTRACT NO. 16552

THIS APPROVAL SHALL NOT RELIEVE THE CONTRACTOR OF ANY RESPONSIBILITY COVERED BY THE CONTRACT DATE: MAR 2 1977

PHILIP ZWEIF & SONS
2100 E. STANLEY
BUILDING 100, 101, 102, 103, 104, 105, 106, 107, 108, 109, 110, 111, 112, 113, 114, 115, 116, 117, 118, 119, 120, 121, 122, 123, 124, 125, 126, 127, 128, 129, 130, 131, 132, 133, 134, 135, 136, 137, 138, 139, 140, 141, 142, 143, 144, 145, 146, 147, 148, 149, 150, 151, 152, 153, 154, 155, 156, 157, 158, 159, 160, 161, 162, 163, 164, 165, 166, 167, 168, 169, 170, 171, 172, 173, 174, 175, 176, 177, 178, 179, 180, 181, 182, 183, 184, 185, 186, 187, 188, 189, 190, 191, 192, 193, 194, 195, 196, 197, 198, 199, 200, 201, 202, 203, 204, 205, 206, 207, 208, 209, 210, 211, 212, 213, 214, 215, 216, 217, 218, 219, 220, 221, 222, 223, 224, 225, 226, 227, 228, 229, 230, 231, 232, 233, 234, 235, 236, 237, 238, 239, 240, 241, 242, 243, 244, 245, 246, 247, 248, 249, 250, 251, 252, 253, 254, 255, 256, 257, 258, 259, 260, 261, 262, 263, 264, 265, 266, 267, 268, 269, 270, 271, 272, 273, 274, 275, 276, 277, 278, 279, 280, 281, 282, 283, 284, 285, 286, 287, 288, 289, 290, 291, 292, 293, 294, 295, 296, 297, 298, 299, 300, 301, 302, 303, 304, 305, 306, 307, 308, 309, 310, 311, 312, 313, 314, 315, 316, 317, 318, 319, 320, 321, 322, 323, 324, 325, 326, 327, 328, 329, 330, 331, 332, 333, 334, 335, 336, 337, 338, 339, 340, 341, 342, 343, 344, 345, 346, 347, 348, 349, 350, 351, 352, 353, 354, 355, 356, 357, 358, 359, 360, 361, 362, 363, 364, 365, 366, 367, 368, 369, 370, 371, 372, 373, 374, 375, 376, 377, 378, 379, 380, 381, 382, 383, 384, 385, 386, 387, 388, 389, 390, 391, 392, 393, 394, 395, 396, 397, 398, 399, 400, 401, 402, 403, 404, 405, 406, 407, 408, 409, 410, 411, 412, 413, 414, 415, 416, 417, 418, 419, 420, 421, 422, 423, 424, 425, 426, 427, 428, 429, 430, 431, 432, 433, 434, 435, 436, 437, 438, 439, 440, 441, 442, 443, 444, 445, 446, 447, 448, 449, 450, 451, 452, 453, 454, 455, 456, 457, 458, 459, 460, 461, 462, 463, 464, 465, 466, 467, 468, 469, 470, 471, 472, 473, 474, 475, 476, 477, 478, 479, 480, 481, 482, 483, 484, 485, 486, 487, 488, 489, 490, 491, 492, 493, 494, 495, 496, 497, 498, 499, 500, 501, 502, 503, 504, 505, 506, 507, 508, 509, 510, 511, 512, 513, 514, 515, 516, 517, 518, 519, 520, 521, 522, 523, 524, 525, 526, 527, 528, 529, 530, 531, 532, 533, 534, 535, 536, 537, 538, 539, 540, 541, 542, 543, 544, 545, 546, 547, 548, 549, 550, 551, 552, 553, 554, 555, 556, 557, 558, 559, 560, 561, 562, 563, 564, 565, 566, 567, 568, 569, 570, 571, 572, 573, 574, 575, 576, 577, 578, 579, 580, 581, 582, 583, 584, 585, 586, 587, 588, 589, 590, 591, 592, 593, 594, 595, 596, 597, 598, 599, 600, 601, 602, 603, 604, 605, 606, 607, 608, 609, 610, 611, 612, 613, 614, 615, 616, 617, 618, 619, 620, 621, 622, 623, 624, 625, 626, 627, 628, 629, 630, 631, 632, 633, 634, 635, 636, 637, 638, 639, 640, 641, 642, 643, 644, 645, 646, 647, 648, 649, 650, 651, 652, 653, 654, 655, 656, 657, 658, 659, 660, 661, 662, 663, 664, 665, 666, 667, 668, 669, 670, 671, 672, 673, 674, 675, 676, 677, 678, 679, 680, 681, 682, 683, 684, 685, 686, 687, 688, 689, 690, 691, 692, 693, 694, 695, 696, 697, 698, 699, 700, 701, 702, 703, 704, 705, 706, 707, 708, 709, 710, 711, 712, 713, 714, 715, 716, 717, 718, 719, 720, 721, 722, 723, 724, 725, 726, 727, 728, 729, 730, 731, 732, 733, 734, 735, 736, 737, 738, 739, 740, 741, 742, 743, 744, 745, 746, 747, 748, 749, 750, 751, 752, 753, 754, 755, 756, 757, 758, 759, 760, 761, 762, 763, 764, 765, 766, 767, 768, 769, 770, 771, 772, 773, 774, 775, 776, 777, 778, 779, 780, 781, 782, 783, 784, 785, 786, 787, 788, 789, 790, 791, 792, 793, 794, 795, 796, 797, 798, 799, 800, 801, 802, 803, 804, 805, 806, 807, 808, 809, 810, 811, 812, 813, 814, 815, 816, 817, 818, 819, 820, 821, 822, 823, 824, 825, 826, 827, 828, 829, 830, 831, 832, 833, 834, 835, 836, 837, 838, 839, 840, 841, 842, 843, 844, 845, 846, 847, 848, 849, 850, 851, 852, 853, 854, 855, 856, 857, 858, 859, 860, 861, 862, 863, 864, 865, 866, 867, 868, 869, 870, 871, 872, 873, 874, 875, 876, 877, 878, 879, 880, 881, 882, 883, 884, 885, 886, 887, 888, 889, 890, 891, 892, 893, 894, 895, 896, 897, 898, 899, 900, 901, 902, 903, 904, 905, 906, 907, 908, 909, 910, 911, 912, 913, 914, 915, 916, 917, 918, 919, 920, 921, 922, 923, 924, 925, 926, 927, 928, 929, 930, 931, 932, 933, 934, 935, 936, 937, 938, 939, 940, 941, 942, 943, 944, 945, 946, 947, 948, 949, 950, 951, 952, 953, 954, 955, 956, 957, 958, 959, 960, 961, 962, 963, 964, 965, 966, 967, 968, 969, 970, 971, 972, 973, 974, 975, 976, 977, 978, 979, 980, 981, 982, 983, 984, 985, 986, 987, 988, 989, 990, 991, 992, 993, 994, 995, 996, 997, 998, 999, 1000



SHOP NOTES
1. SEE SHEET E4 FOR GENERAL NOTES.
2. MATL: A528 UN.

SECT. E-E
SECT. F-F

SECT. D-D

PIN PLATE (PC) - CUTTING DETAIL

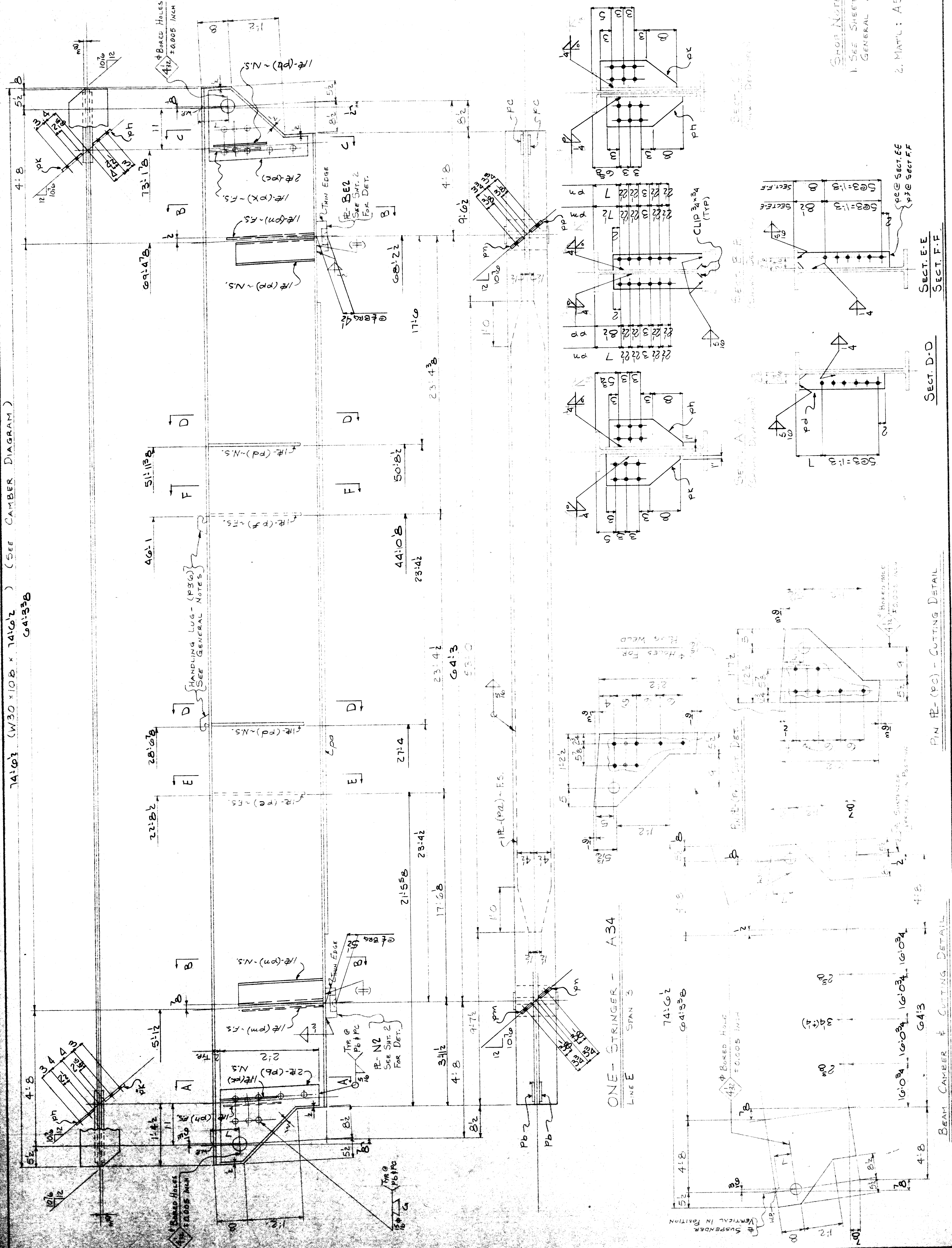
BEAM CAMBER & CUTTING DETAIL

74'6" (W30 x 102 x 14162) (SEE CAMBER DIAGRAM)
64'3" B

LINE NO.	QTY	SIZE	REMARKS	APPROVED
1	1	STRINGER		
2	1	W30x102		
3	1	1/2" x 12"		
4	2	1/2" x 12"		
5	2	1/2" x 12"		
6	2	1/2" x 12"		
7	1	1/2" x 12"		
8	2	1/2" x 12"		
9	2	1/2" x 12"		
10	1	1/2" x 12"		
11	1	1/2" x 12"		
12	2	1/2" x 12"		
13	1	1/2" x 12"		
14				
15				
16				
17				
18				
19	1	SOLE PLATE	N2 SEE SHITZ	
20	1	SOLE PLATE	BELT FOR DET.	
21	2	1/2" x 12"	64'3" B	
22				
23				
24				
25				
26				
27				
28				
29				
30				
31				
32				
33				
34				
35				
36				
37				
38				
39				
40				
41				
42				
43				
44				
45				
46				
47				
48				
49				
50				
51				
52				
53				
54				
55				
56				
57				
58				
59				
60				
61				
62				
63				
64				
65				
66				
67				

CITY OF DETROIT
CITY ENGINEERING DEPARTMENT
APPROVED
FOR ALL THE WITH CONTRACT NO. 14652
DATE: MAR 2 1977
BY: [Signature]

PHILIP ZWEIF & SONS
2100E PHASE
BUILDING 1000 W. BROAD ST. DETROIT, MI 48226
OWNER: CITY OF DETROIT
CONTRACTOR: [Name]
ARCHITECT: [Name]
TITLE: [Name]
REVISED: [Name]
DATE: 2-17-77
DRAWN: JJJ
CHECKED: [Name]
CONTRACT: 335
SHEET 34 OF 53



SHAPE NOTES
1. SEE SHEET E4 FOR GENERAL NOTES.
2. MAT'L: A588 U.N.

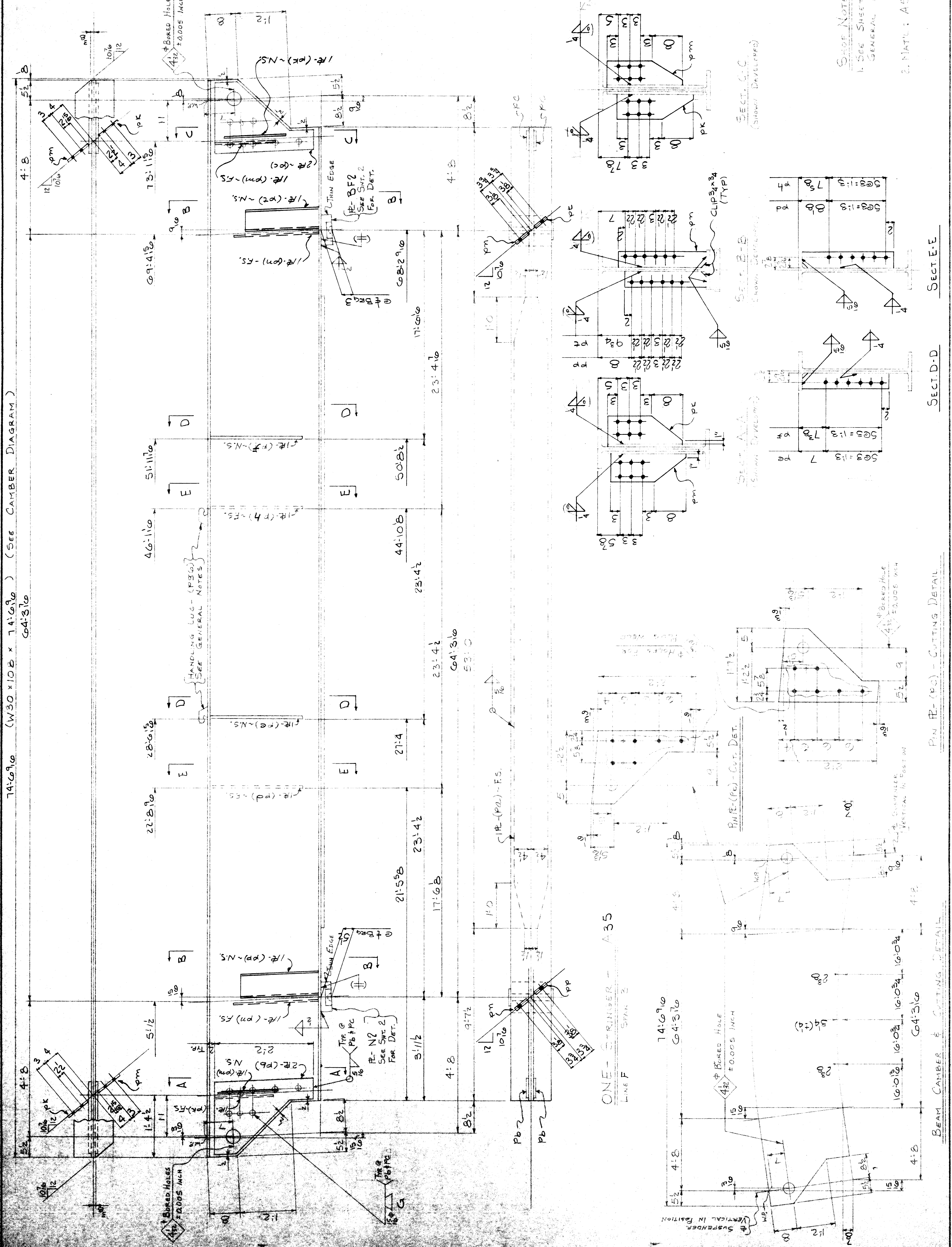
BEAM CAMBER & CUTTING DETAIL
PIN E-(PC) - CUTTING DETAIL
SECT. D-D
SECT. E-E
SECT. F-F

74'-6 9/10 (W30 x 102 x 74'-6 9/10) (SEE CAMBER DIAGRAM)
64'-3 1/2

LINE NO.	QTY	DESCRIPTION	REMARKS
1	1	STRINGER	ASS
2	1	W30x102	CVN
3	1	R 1 9	CVN
4	2	R 2 1 9 2	CVN
5	2	R 2 1 9 2	CVN
6	1	R 2 1 9 2	CVN
7	1	R 2 1 9 2	CVN
8	1	R 2 1 9 2	CVN
9	1	R 2 1 9 2	CVN
10	2	R 2 1 9 2	CVN
11	2	R 2 1 9 2	CVN
12	2	R 2 1 9 2	CVN
13	1	R 2 1 9 2	CVN
14	1	R 2 1 9 2	CVN
15	1	R 2 1 9 2	CVN
16	1	R 2 1 9 2	CVN
17	1	R 2 1 9 2	CVN
18	1	R 2 1 9 2	CVN
19	1	R 2 1 9 2	CVN
20	1	R 2 1 9 2	CVN
21	2	R 2 1 9 2	CVN
22	2	R 2 1 9 2	CVN
23	2	R 2 1 9 2	CVN
24	2	R 2 1 9 2	CVN
25	2	R 2 1 9 2	CVN
26	2	R 2 1 9 2	CVN
27	2	R 2 1 9 2	CVN
28	2	R 2 1 9 2	CVN
29	2	R 2 1 9 2	CVN
30	2	R 2 1 9 2	CVN
31	2	R 2 1 9 2	CVN
32	2	R 2 1 9 2	CVN
33	2	R 2 1 9 2	CVN
34	2	R 2 1 9 2	CVN
35	2	R 2 1 9 2	CVN
36	2	R 2 1 9 2	CVN
37	2	R 2 1 9 2	CVN
38	2	R 2 1 9 2	CVN
39	2	R 2 1 9 2	CVN
40	2	R 2 1 9 2	CVN
41	2	R 2 1 9 2	CVN
42	2	R 2 1 9 2	CVN
43	2	R 2 1 9 2	CVN
44	2	R 2 1 9 2	CVN
45	2	R 2 1 9 2	CVN
46	2	R 2 1 9 2	CVN
47	2	R 2 1 9 2	CVN
48	2	R 2 1 9 2	CVN
49	2	R 2 1 9 2	CVN
50	2	R 2 1 9 2	CVN
51	2	R 2 1 9 2	CVN
52	2	R 2 1 9 2	CVN
53	2	R 2 1 9 2	CVN
54	2	R 2 1 9 2	CVN
55	2	R 2 1 9 2	CVN
56	2	R 2 1 9 2	CVN
57	2	R 2 1 9 2	CVN
58	2	R 2 1 9 2	CVN
59	2	R 2 1 9 2	CVN
60	2	R 2 1 9 2	CVN
61	2	R 2 1 9 2	CVN
62	2	R 2 1 9 2	CVN
63	2	R 2 1 9 2	CVN
64	2	R 2 1 9 2	CVN
65	2	R 2 1 9 2	CVN
66	2	R 2 1 9 2	CVN
67	2	R 2 1 9 2	CVN
68	2	R 2 1 9 2	CVN
69	2	R 2 1 9 2	CVN
70	2	R 2 1 9 2	CVN
71	2	R 2 1 9 2	CVN
72	2	R 2 1 9 2	CVN
73	2	R 2 1 9 2	CVN
74	2	R 2 1 9 2	CVN
75	2	R 2 1 9 2	CVN
76	2	R 2 1 9 2	CVN
77	2	R 2 1 9 2	CVN
78	2	R 2 1 9 2	CVN
79	2	R 2 1 9 2	CVN
80	2	R 2 1 9 2	CVN
81	2	R 2 1 9 2	CVN
82	2	R 2 1 9 2	CVN
83	2	R 2 1 9 2	CVN
84	2	R 2 1 9 2	CVN
85	2	R 2 1 9 2	CVN
86	2	R 2 1 9 2	CVN
87	2	R 2 1 9 2	CVN

CITY OF DETROIT
CITY ENGINEERING DEPARTMENT
APPROVED
FOR USE IN CONNECTION WITH CONTRACT NO. 14-1550
DATE: MAR 2 1977
BY: [Signature]

PHILIP ZWEIF & SONS
2100 E. BAYVIEW
BUILDING BAYVIEW AVE. BAYVIEW, MICH. 48204
OWNER: CITY OF DETROIT, MICH.
LOCATION: CITY OF DETROIT, MICH.
CONTRACTOR: WATER TIGHT, CONSTRUCTION COMPANY
ARCHITECT: CITY ENGINEERING DEPT., CITY OF DETROIT, MICH.
TITLE: [Blank]
REVISED: [Blank]
DATE: 2-7-77
DRAWN BY: [Blank]
CHECKED BY: [Blank]
REV: [Blank]
SHEET 35 OF 53



SHORE NOTES
1. SEE SHEET E-4 FOR GENERAL NOTES.
2. MATL: A355 U.V.

SECT. E-E

SECT. D-D

PIN PLATE (PC) - CUTTING DETAIL

BEAM CAMBER & CUTTING DETAIL

74'-6 7/16 (W30 x 108 x 74'-6 7/16) (SEE CAMBER DIAGRAM)
64'-3 1/16

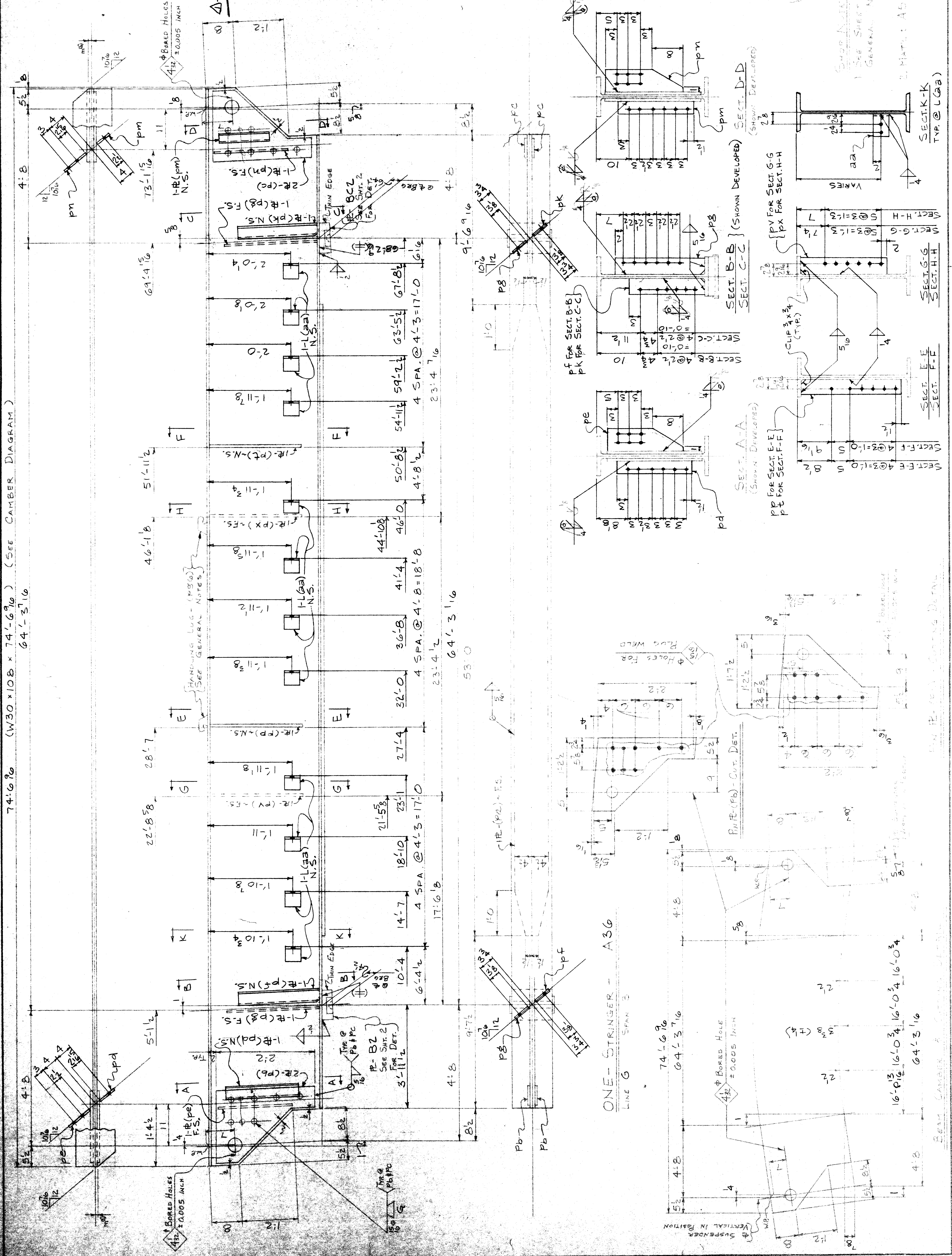
LINE NO.	DESCRIPTION	QUANTITY	REMARKS
1	STRINGER	74 6 7/16	A36
2	1" PL	53 0	PA
3	2" PL	2 2 5/8	PB
4	2" PL	2 2 5/8	PC
5	1" PL	1 8	PD
6	1" PL	1 8	PE
7	1" PL	1 8	PF
8	1" PL	2 0 8	PG
9	1" PL	1 8	PH
10	1" PL	1 8	PI
11	1" PL	2 2 4	PP
12	1" PL	2 2 4	PT
13	1" PL	1 1 1/2	PV
14	1" PL	1 1 1/2	PX
15	1" PL	1 1 1/2	PY
16	1" PL	1 1 1/2	PZ
17	1" PL	0 4	AA
18	1" PL	0 4	BB
19	1" PL	0 4	CC
20	1" PL	0 4	DD
21	1" PL	0 4	EE
22	1" PL	0 4	FF
23	1" PL	0 4	GG
24	1" PL	0 4	HH
25	1" PL	0 4	II
26	1" PL	0 4	JJ
27	1" PL	0 4	KK
28	1" PL	0 4	LL
29	1" PL	0 4	MM
30	1" PL	0 4	NN
31	1" PL	0 4	OO
32	1" PL	0 4	PP
33	1" PL	0 4	QQ
34	1" PL	0 4	RR
35	1" PL	0 4	SS
36	1" PL	0 4	TT
37	1" PL	0 4	UU
38	1" PL	0 4	VV
39	1" PL	0 4	WW
40	1" PL	0 4	XX
41	1" PL	0 4	YY
42	1" PL	0 4	ZZ
43	1" PL	0 4	AAA
44	1" PL	0 4	BBB
45	1" PL	0 4	CCC
46	1" PL	0 4	DDD
47	1" PL	0 4	EEE
48	1" PL	0 4	FFF
49	1" PL	0 4	GGG
50	1" PL	0 4	HHH
51	1" PL	0 4	III
52	1" PL	0 4	JJJ
53	1" PL	0 4	KKK
54	1" PL	0 4	LLL
55	1" PL	0 4	MMM
56	1" PL	0 4	NNN
57	1" PL	0 4	OOO
58	1" PL	0 4	PPP
59	1" PL	0 4	QQQ
60	1" PL	0 4	RRR
61	1" PL	0 4	SSS
62	1" PL	0 4	TTT
63	1" PL	0 4	UUU
64	1" PL	0 4	VVV
65	1" PL	0 4	WWW
66	1" PL	0 4	XXX
67	1" PL	0 4	YYY
68	1" PL	0 4	ZZZ
69	1" PL	0 4	AAA
70	1" PL	0 4	BBB
71	1" PL	0 4	CCC
72	1" PL	0 4	DDD
73	1" PL	0 4	EEE
74	1" PL	0 4	FFF
75	1" PL	0 4	GGG
76	1" PL	0 4	HHH
77	1" PL	0 4	III
78	1" PL	0 4	JJJ
79	1" PL	0 4	KKK
80	1" PL	0 4	LLL
81	1" PL	0 4	MMM
82	1" PL	0 4	NNN
83	1" PL	0 4	OOO
84	1" PL	0 4	PPP
85	1" PL	0 4	QQQ
86	1" PL	0 4	RRR
87	1" PL	0 4	SSS
88	1" PL	0 4	TTT
89	1" PL	0 4	UUU
90	1" PL	0 4	VVV
91	1" PL	0 4	WWW
92	1" PL	0 4	XXX
93	1" PL	0 4	YYY
94	1" PL	0 4	ZZZ
95	1" PL	0 4	AAA
96	1" PL	0 4	BBB
97	1" PL	0 4	CCC
98	1" PL	0 4	DDD
99	1" PL	0 4	EEE
100	1" PL	0 4	FFF

CITY OF DETROIT
CITY ENGINEERING DEPARTMENT
APPROVED AS NOTED
DATE: MAR 2 1977
BY: [Signature]

THIS DRAWING SHALL NOT BE THE CONTRACTOR'S RESPONSIBILITY COVERED BY THE CONTRACT NO. PM 1552

PHILIP ZWEIF & SONS
BUILDING 1000 W. WOODWARD AVENUE, DETROIT, MICH. 48226
OWNER: CITY OF DETROIT
LOCATION: DETROIT, MICH.
CONTRACTOR: PHILIP ZWEIF & SONS
ARCHITECT: CITY ENGINEERING DEPARTMENT
TITLE: STRINGER, SPAN 3

DRAWN: B.J. DATE: 2-1-77
CHECKED: P.P.J.
REVISED: 5-27-77
PAINT: N.C.S.
CONTRACT: 335
SHEET: 30 OF 53



ONE-STRINGER - A36
LINE 6 SPAN 3
74'-6 7/16
64'-3 1/16

VERTICAL IN POSITION

PHILIP ZWEIF & SONS

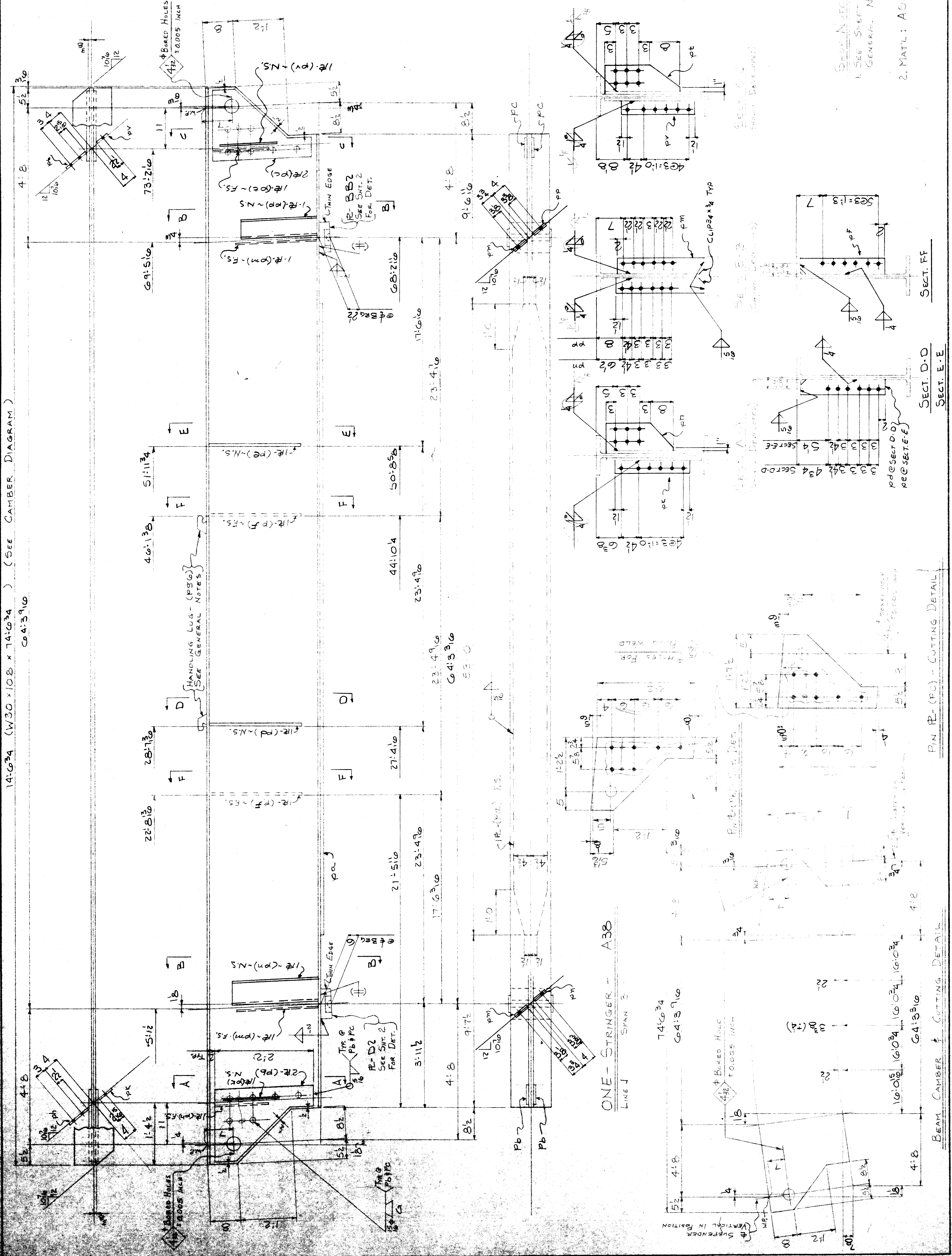
CONTRACT 335 SHEET 30 OF 53

14-G34 (W30 x 108 x 74-G34) (SEE CAMBER DIAGRAM)
 C04:3910

LINE NO.	QUANTITY	SHAPE	LENGTH	ASSEMBLY MARK	REMARKS	ORDERED	DATE
1	1	STRANGER	74'-0"	A38			1/4
2	1	W30x108	53'-0"	P4			1/19
3	1	PL 1/2	22'-0"	P6			1/20
4	2	PL 1/2	22'-0"	PC			1/20
5	1	PL 1/2	10'-0"	PD			2/6
6	2	PL 1/2	11'-0"	PE			2/6
7	1	PL 1/2	11'-0"	PF			2/6
8	1	PL 1/2	11'-0"	PG			2/6
9	1	PL 1/2	11'-0"	PH			2/6
10	1	PL 1/2	11'-0"	PI			2/6
11	2	PL 1/2	22'-0"	PK			2/6
12	2	PL 1/2	22'-0"	PL			2/6
13	1	PL 1/2	10'-0"	PM			2/6
14	1	PL 1/2	10'-0"	PN			2/6
15	1	PL 1/2	10'-0"	PO			2/6
16	1	PL 1/2	10'-0"	PP			2/6
17	1	PL 1/2	10'-0"	PQ			2/6
18	1	PL 1/2	10'-0"	PR			2/6
19	1	PL 1/2	10'-0"	PS			2/6
20	1	SOLE PL		BB2	SEE SMT 2		
21	1	SOLE PL		D2	FOR DET.		
22	1	PL 1/4		PGG			

CITY OF DETROIT
 CITY ENGINEERING DEPARTMENT
APPROVED
 FOR COMPLIANCE WITH CONTRACT NO. 1558
 THIS APPROVAL SHALL NOT RELIEVE THE CONTRACTOR OF ANY RESPONSIBILITY COVERED BY THE CONTRACT
 DATE: MAR 2 1977 BY: [Signature]

PHILIP ZWEIF & SONS
 BUILDING 1000 E. WILSON AVENUE
 DETROIT, MICHIGAN 48207
 CONTRACTOR
 ARCHITECT: CITY ENGINEERING DEPT. OF DETROIT, MICH.
 TITLE: STRANGER SPAN
 DRAWN: J.J. DATE: 2-1-77
 CHECKED: G.C.C. REV.
 PAINT: NONE
 CONTRACT: 335 SHEET 38 OF 53



Spec Notes
 1. SEE SHEET E4 FOR GENERAL NOTES.
 2. MATL: A388 U.N.

SECT. D-D
 SECT. E-E
 SECT. F-F

BEAM CAMBER & CUTTING DETAIL

741610 (W30 x 108 x 741610) (SEE CAMBER DIAGRAM)
64158B

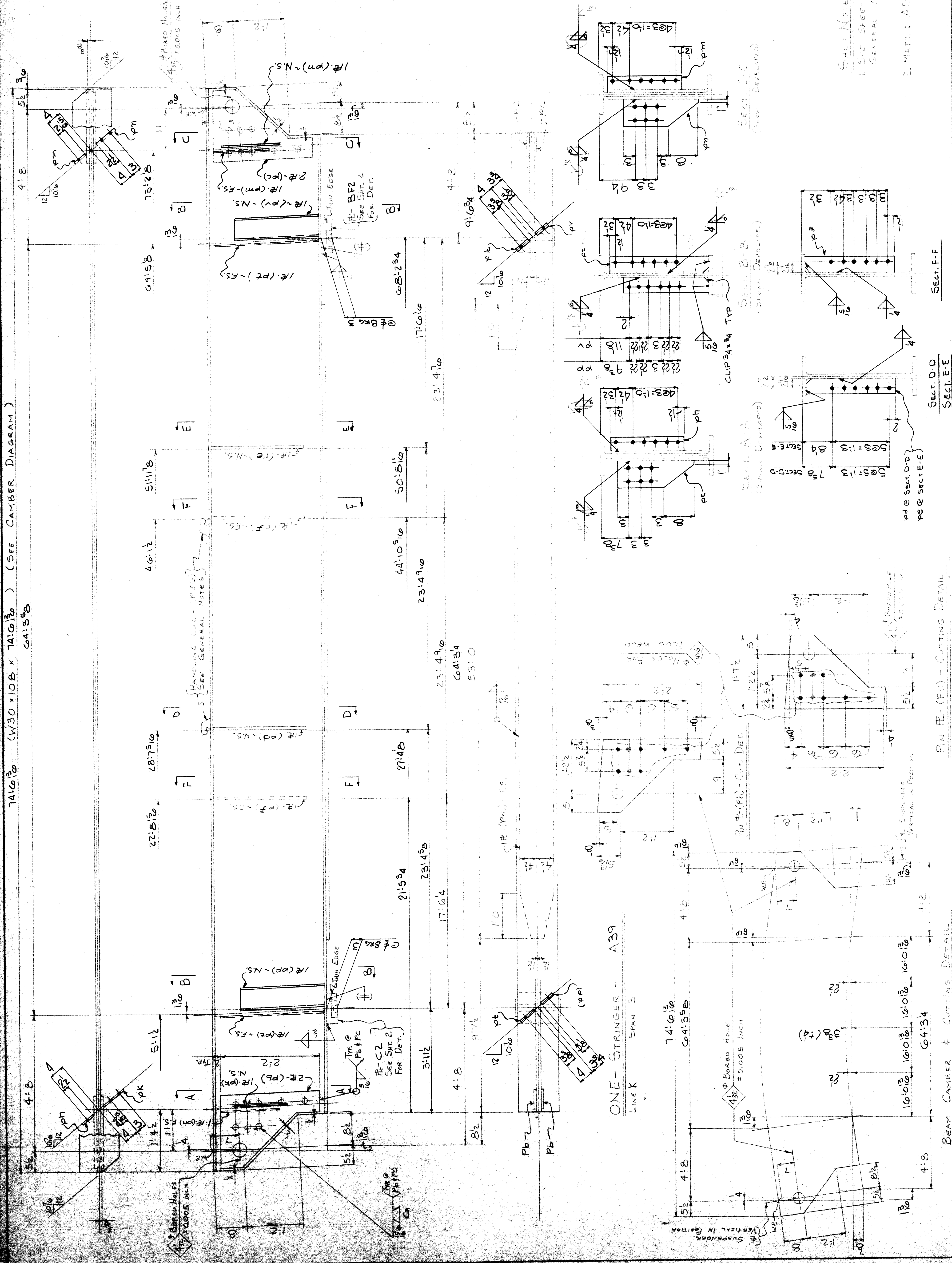
LINE NO.	QTY	DESCRIPTION	REMARKS
1	1	STRINGER	AST
2	1	W30x108	CYN
3	1	1/2" x 1/2"	CYN
4	2	2 1/2" x 1/2"	CYN
5	2	2 1/2" x 1/2"	CYN
6	1	1 1/2" x 1/2"	CYN
7	2	2 1/2" x 1/2"	CYN
8	2	2 1/2" x 1/2"	CYN
9	1	1 1/2" x 1/2"	CYN
10	1	1 1/2" x 1/2"	CYN
11	1	1 1/2" x 1/2"	CYN
12	1	1 1/2" x 1/2"	CYN
13	1	1 1/2" x 1/2"	CYN
14	2	2 1/2" x 1/2"	CYN
15	2	2 1/2" x 1/2"	CYN
16	1	1 1/2" x 1/2"	CYN
17	1	SOLE PLATE	C2 SEE SHRT 2
18	1	SOLE PLATE	BFZ FOR DET
19	1	SOLE PLATE	BFZ FOR DET
20	1	SOLE PLATE	BFZ FOR DET
21	1	SOLE PLATE	BFZ FOR DET
22	1	SOLE PLATE	BFZ FOR DET
23	1	SOLE PLATE	BFZ FOR DET
24	1	SOLE PLATE	BFZ FOR DET
25	1	SOLE PLATE	BFZ FOR DET
26	1	SOLE PLATE	BFZ FOR DET
27	1	SOLE PLATE	BFZ FOR DET
28	1	SOLE PLATE	BFZ FOR DET
29	1	SOLE PLATE	BFZ FOR DET
30	1	SOLE PLATE	BFZ FOR DET
31	1	SOLE PLATE	BFZ FOR DET
32	1	SOLE PLATE	BFZ FOR DET
33	1	SOLE PLATE	BFZ FOR DET
34	1	SOLE PLATE	BFZ FOR DET
35	1	SOLE PLATE	BFZ FOR DET
36	1	SOLE PLATE	BFZ FOR DET
37	1	SOLE PLATE	BFZ FOR DET
38	1	SOLE PLATE	BFZ FOR DET
39	1	SOLE PLATE	BFZ FOR DET
40	1	SOLE PLATE	BFZ FOR DET
41	1	SOLE PLATE	BFZ FOR DET
42	1	SOLE PLATE	BFZ FOR DET
43	1	SOLE PLATE	BFZ FOR DET
44	1	SOLE PLATE	BFZ FOR DET
45	1	SOLE PLATE	BFZ FOR DET
46	1	SOLE PLATE	BFZ FOR DET
47	1	SOLE PLATE	BFZ FOR DET
48	1	SOLE PLATE	BFZ FOR DET
49	1	SOLE PLATE	BFZ FOR DET
50	1	SOLE PLATE	BFZ FOR DET
51	1	SOLE PLATE	BFZ FOR DET
52	1	SOLE PLATE	BFZ FOR DET
53	1	SOLE PLATE	BFZ FOR DET
54	1	SOLE PLATE	BFZ FOR DET
55	1	SOLE PLATE	BFZ FOR DET
56	1	SOLE PLATE	BFZ FOR DET
57	1	SOLE PLATE	BFZ FOR DET
58	1	SOLE PLATE	BFZ FOR DET
59	1	SOLE PLATE	BFZ FOR DET
60	1	SOLE PLATE	BFZ FOR DET
61	1	SOLE PLATE	BFZ FOR DET
62	1	SOLE PLATE	BFZ FOR DET
63	1	SOLE PLATE	BFZ FOR DET
64	1	SOLE PLATE	BFZ FOR DET
65	1	SOLE PLATE	BFZ FOR DET
66	1	SOLE PLATE	BFZ FOR DET
67	1	SOLE PLATE	BFZ FOR DET

CITY OF DETROIT
CITY ENGINEERING DEPARTMENT

APPROVED

FOR CO. PLANCE WITH CONTRACT NO. M6557
THIS APPROVAL SHALL NOT RELIEVE THE CONTRACTOR OF ANY RESPONSIBILITY COVERED BY THE CONTRACT
DATE: MAR 2 1977

PHILIP ZWEIF & SONS
2100 E 5TH AVE
BUILDING BRASSY AVE. BRASSY CROSSING THE P.C.R.R.
OWNER: CITY OF DETROIT
LOCATION: 14-10-10
CONTRACTOR: WALTER SEBE CONSTRUCTION COMPANY
ARCHITECT: WALTER SEBE CONSTRUCTION COMPANY
TITLE: BRASSY AVE. BRASSY CROSSING THE P.C.R.R.
RIVETS: 3/8" x 1 1/2"
PAINT: 2074
DRAWN: J.J. DATE: 2-1-77
CHKD: R.P.J.
REV: _____
SHEET 39 OF 53



SECTION NOTES
1. SEE SHEET E-4 FOR GENERAL NOTES.
2. METAL: A502 U.N.

ONE - STRINGER - A39
LINE K
SPAN 3
741610
64158B

BEAM CAMBER & CUTTING DETAIL

SECTION A-A (SPAN DEVELOPED)
SECTION B-B (SPAN DEVELOPED)
SECTION C-C (SPAN DEVELOPED)
SECTION D-D
SECTION E-E
SECTION F-F

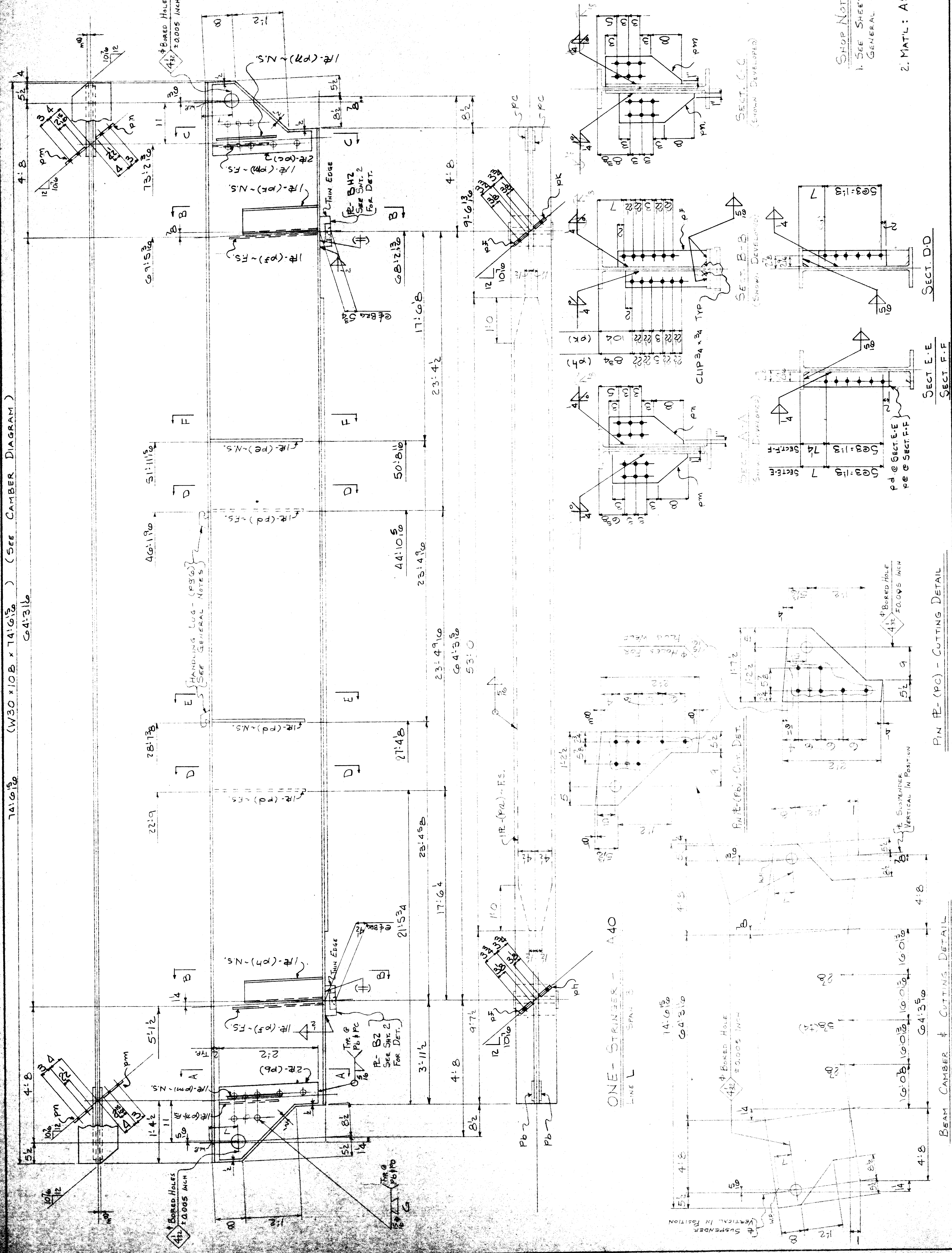
741'0 1/2 (W30 x 108 x 141'0 1/2) (SEE CAMBER DIAGRAM)
 64'3 1/2

NO.	DESCRIPTION	QTY	UNIT	REMARKS
1	1 STRINGER	14	CS	
2	1 W30 x 108	53	CS	
3	1 RE 1/2"	212	CS	
4	2 RE 1/2"	212	CS	
5	2 RE 1/2"	212	CS	
6	2 RE 1/2"	212	CS	
7	1 RE 1/2"	112	CS	
8	2 RE 1/2"	208	CS	
9	1 RE 1/2"	108	CS	
10	1 RE 1/2"	108	CS	
11	2 RE 1/2"	108	CS	
12	2 RE 1/2"	108	CS	
13				
14				
15				
16				
17	2 RE 1/2"	212	CS	
18	1 SOLE PL	53	CS	
19	1 SOLE PL	53	CS	
20				
21				
22				
23				
24				
25				
26				
27				
28				
29				
30				
31				
32				
33				
34				
35				
36				
37				
38				
39				
40				
41				
42				
43				
44				
45				
46				
47				
48				
49				
50				
51				
52				
53				
54				
55				
56				
57				

CITY OF DETROIT
 CITY ENGINEERING DEPARTMENT
APPROVED AS SHOWN
 FOR COMPLIANCE WITH CONTRACT NO. PM 4552
 THIS APPROVAL SHALL NOT RELIEVE THE CONTRACTOR
 OF ANY RESPONSIBILITY COVERED BY THE CONTRACT
 DATE: MAR 2 1977

PHILIP ZWEIF & SONS
 2100 E. STANLEY
 BUILDING BEAVER AVE. BUREAU OF CONSTRUCTION THE P.C.R.R.
 OWNER: CITY OF DETROIT, MICH.
 LOCATION: DETROIT, MICH.
 CONTRACTOR: WATER TOWER CONSTRUCTION COMPANY
 ARCHITECT: CITY ENGINEERING DEPT., CITY OF DETROIT, MICH.
 TITLE: STRAINER SPAN 3
 DRAWN: JJJ DATE: 2-7-77
 CHECKED: BJJ
 RIVETS: NONE
 HOLES: 1/2" x 4" U.N.
 PAINT: NONE
 REV: _____
 CONTRACT 335 SHEET 40 of 53

SHOP NOTES
 1. SEE SHEET E-4 FOR
 GENERAL NOTES.
 2. MATL: A588 U.N.



PIN PL-(PC) - CUTTING DETAIL

BEAM CAMBER & CUTTING DETAIL

SECT. E-E
 SECT. F-F

SECT. D-D

SECT. C-C
 (SHOWN DEVELOPED)

SECT. B-B
 (SHOWN DEVELOPED)

SECT. A-A
 (SHOWN DEVELOPED)

ONE-STRAINER - SPAN 3
 LINE L

74'6 1/2" (W30 x 108 x 74'6 1/2") (SEE CAMBER DIAGRAM)
604'3 1/2"

NO.	DESCRIPTION	DATE	BY	REVISION
1	STRONGER	7/4/18	AA1	
2	W30 x 108	7/4/18	AA1	
3	1" PL	7/4/18	AA1	
4	2" PL	7/4/18	AA1	
5	2" PL	7/4/18	AA1	
6	1" PL	7/4/18	AA1	
7	1" PL	7/4/18	AA1	
8	1" PL	7/4/18	AA1	
9	1" PL	7/4/18	AA1	
10	1" PL	7/4/18	AA1	
11	1" PL	7/4/18	AA1	
12	1" PL	7/4/18	AA1	
13	1" PL	7/4/18	AA1	
14	1" PL	7/4/18	AA1	
15	1" PL	7/4/18	AA1	
16	1" PL	7/4/18	AA1	
17	1" PL	7/4/18	AA1	
18	1" PL	7/4/18	AA1	
19	1" PL	7/4/18	AA1	
20	1" PL	7/4/18	AA1	
21	1" PL	7/4/18	AA1	
22	1" PL	7/4/18	AA1	
23	1" PL	7/4/18	AA1	
24	1" PL	7/4/18	AA1	
25	1" PL	7/4/18	AA1	
26	1" PL	7/4/18	AA1	
27	1" PL	7/4/18	AA1	
28	1" PL	7/4/18	AA1	
29	1" PL	7/4/18	AA1	
30	1" PL	7/4/18	AA1	
31	1" PL	7/4/18	AA1	
32	1" PL	7/4/18	AA1	
33	1" PL	7/4/18	AA1	
34	1" PL	7/4/18	AA1	
35	1" PL	7/4/18	AA1	
36	1" PL	7/4/18	AA1	
37	1" PL	7/4/18	AA1	
38	1" PL	7/4/18	AA1	
39	1" PL	7/4/18	AA1	
40	1" PL	7/4/18	AA1	
41	1" PL	7/4/18	AA1	
42	1" PL	7/4/18	AA1	
43	1" PL	7/4/18	AA1	
44	1" PL	7/4/18	AA1	
45	1" PL	7/4/18	AA1	
46	1" PL	7/4/18	AA1	
47	1" PL	7/4/18	AA1	
48	1" PL	7/4/18	AA1	
49	1" PL	7/4/18	AA1	
50	1" PL	7/4/18	AA1	
51	1" PL	7/4/18	AA1	
52	1" PL	7/4/18	AA1	
53	1" PL	7/4/18	AA1	
54	1" PL	7/4/18	AA1	
55	1" PL	7/4/18	AA1	
56	1" PL	7/4/18	AA1	
57	1" PL	7/4/18	AA1	
58	1" PL	7/4/18	AA1	
59	1" PL	7/4/18	AA1	
60	1" PL	7/4/18	AA1	
61	1" PL	7/4/18	AA1	
62	1" PL	7/4/18	AA1	
63	1" PL	7/4/18	AA1	
64	1" PL	7/4/18	AA1	
65	1" PL	7/4/18	AA1	
66	1" PL	7/4/18	AA1	
67	1" PL	7/4/18	AA1	

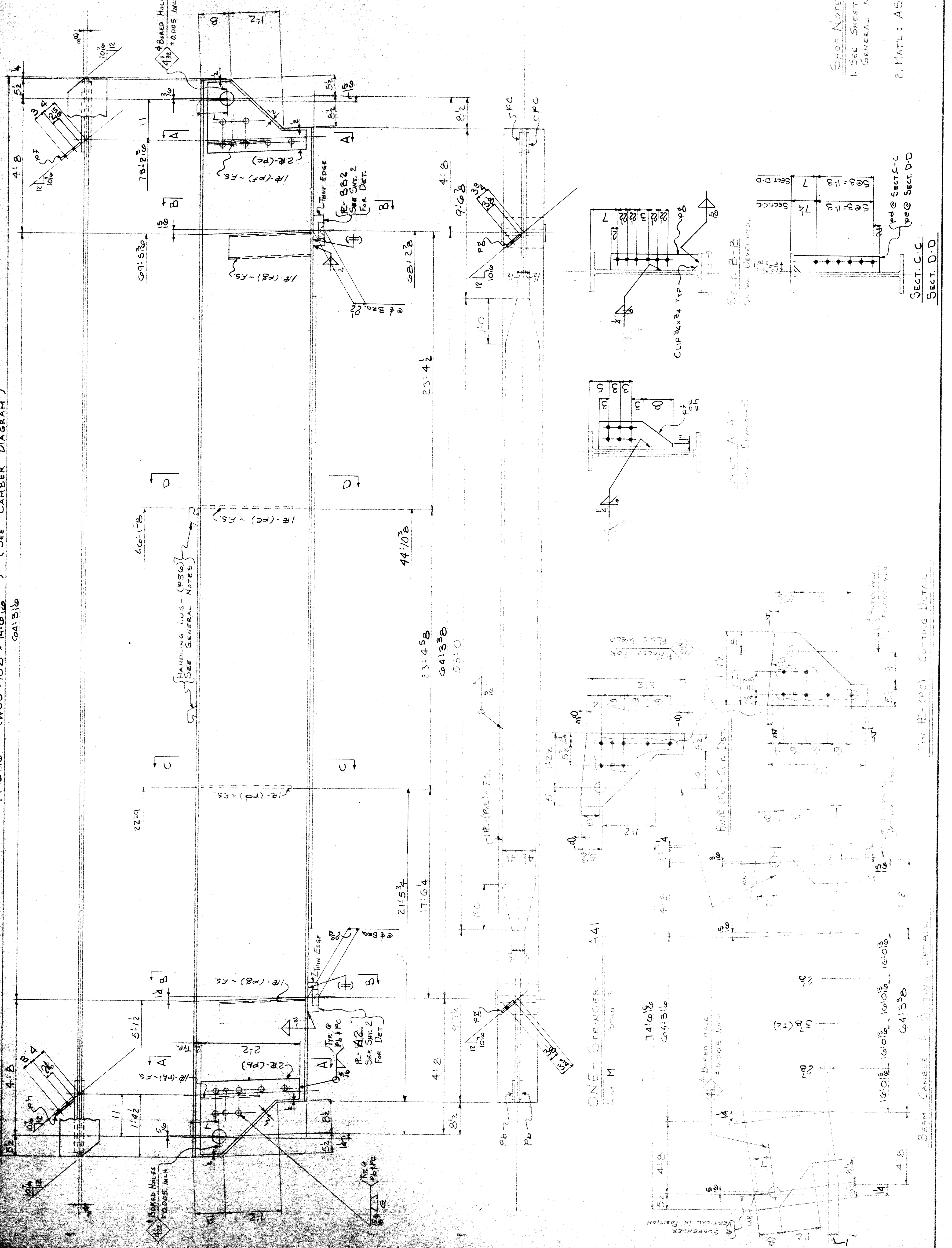
CITY OF DETROIT
CITY ENGINEERING DEPARTMENT
APPROVED
FOR COMPLIANCE WITH CONTRACT NO. PM 6552

THIS APPROVAL SHALL NOT RELIEVE THE CONTRACTOR OF ANY RESPONSIBILITY COVERED BY THE CONTRACT
DATE: MAR 2 1977 BY: _____

PHILIP ZWEIF & SONS
2100 SPHAWNE
BUILDING BARLEY AVE. BELORE CROSSING THE P.C.R.R.
OWNER: CITY OF DETROIT, MICH.
LOCATION: DETROIT, MICH.
CONTRACTOR: WATER TIGHT, CONSTRUCTION COMPANY
ARCHITECT: CITY ENGINEERING DEPT., CITY OF DETROIT, MICH.
TITLE: STRAINER, SPAN 3

DRIVEN NONE
HOLES 1/2" x 1/4" U.M.
PAINT: NONE
REV: _____
DATE: 3-27-77
SHEET 41 OF 53

SHOP NOTES
1. SEE SHEET E4 FOR GENERAL NOTES.
2. MAT'L: A588 U.M.



SECT. C-C
SECT. D-D

SECT. A-A
SECT. B-B

SECT. C-C
SECT. D-D

BEAM CAMBER & CUTTING DETAIL

72'-5 1/2" (W30 x 124 x 72'-10 3/16") (SEE CAMBER DIAGRAM)

71'-3"

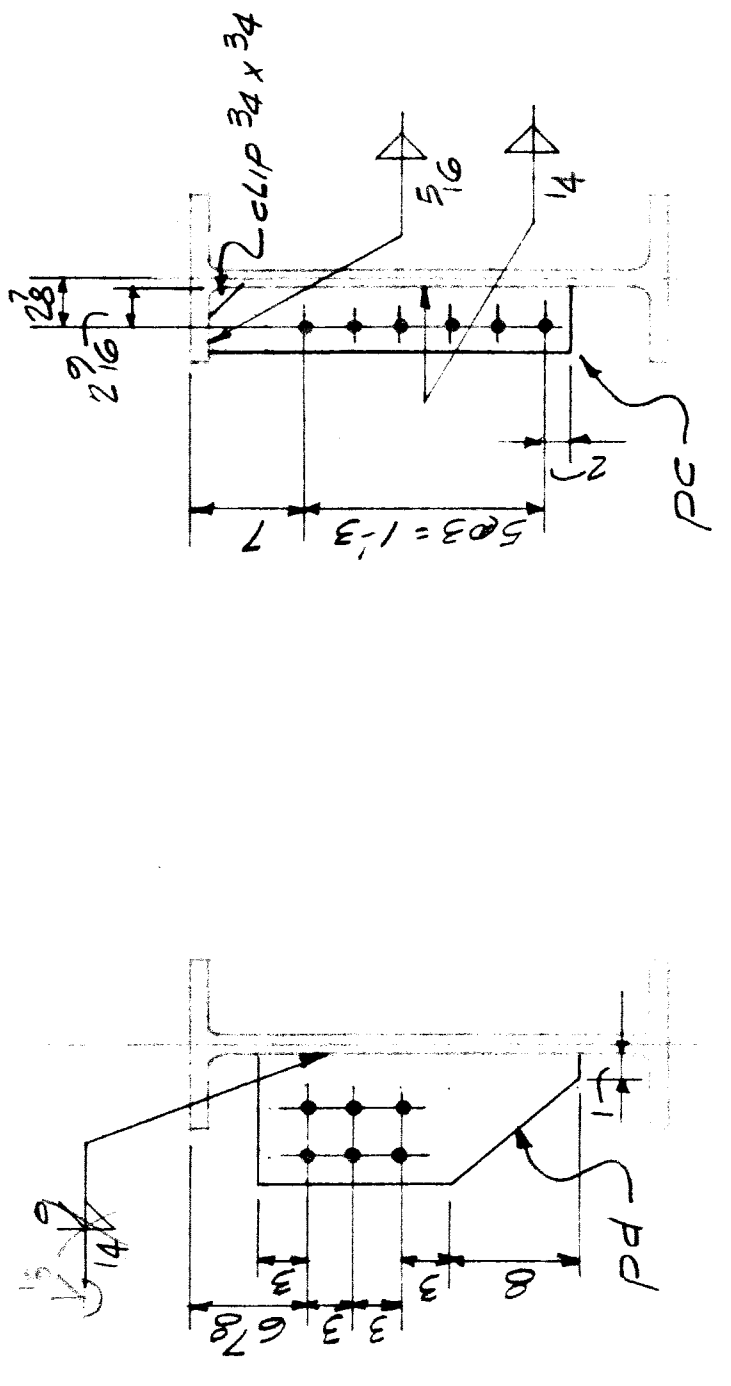
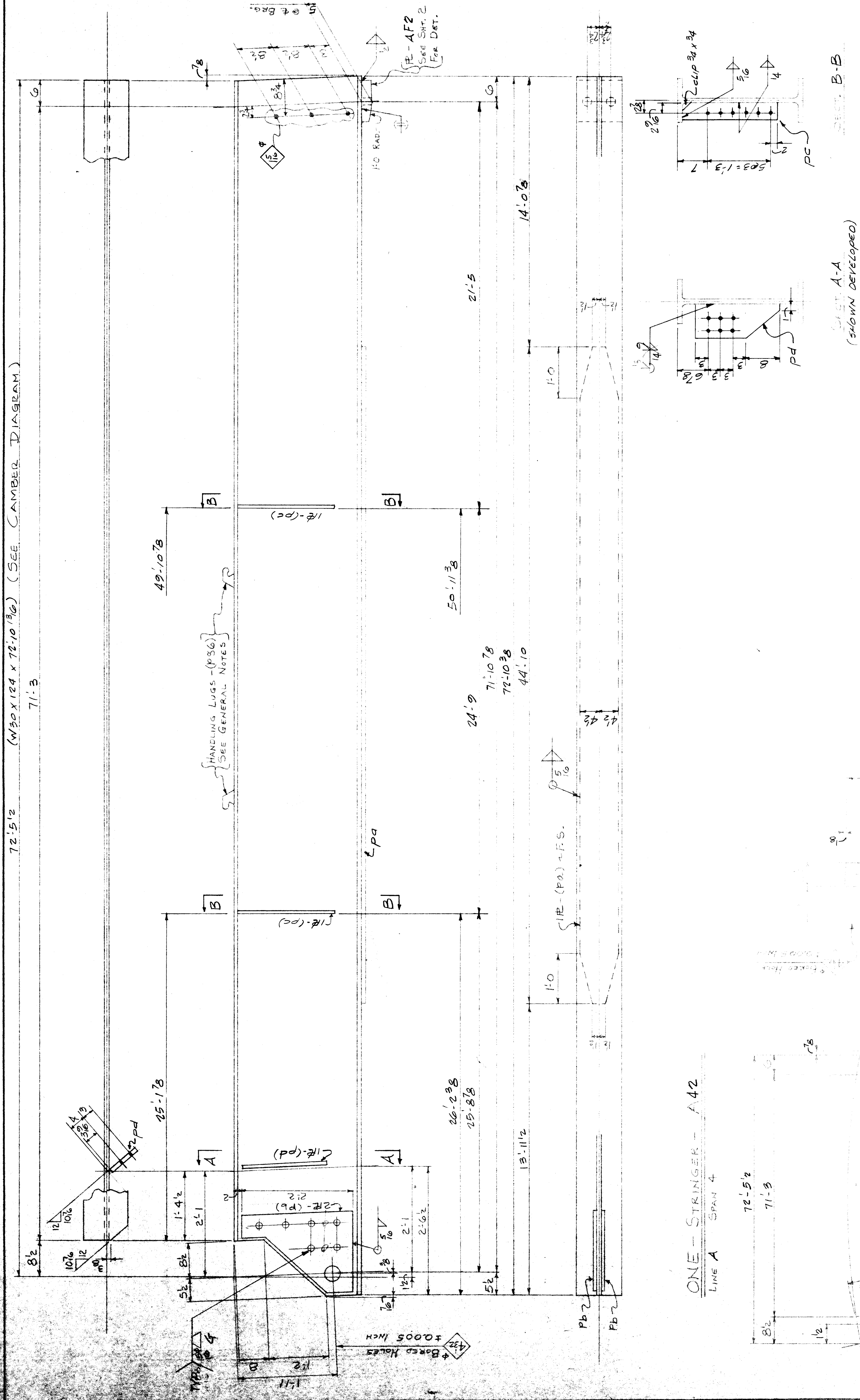
LINE NO.	QUANTITY	SHAPE	LENGTH	MARK	REMARKS	ORDERED
1	1	STRINGER	72'-10 3/16"	A42	CVN	1/10
2	1	W 30 x 124	44'-10"	PA	CVN	1/10
3	2	R 12 x 4	2'-2 1/2"	PB	CVN	1/10
4	2	R 12 x 4	1'-11 1/2"	PC	CVN	1/10
5	1	R 12 x 4	0'-6 1/2"	PA	CVN	1/10
6	1	SOLE PLATE				

CITY OF DETROIT
CITY ENGINEERING DEPARTMENT
APPROVED
FOR COMPLIANCE WITH CONTRACT No. PM 4555
DATE: MAR 2 1977
BY: [Signature]

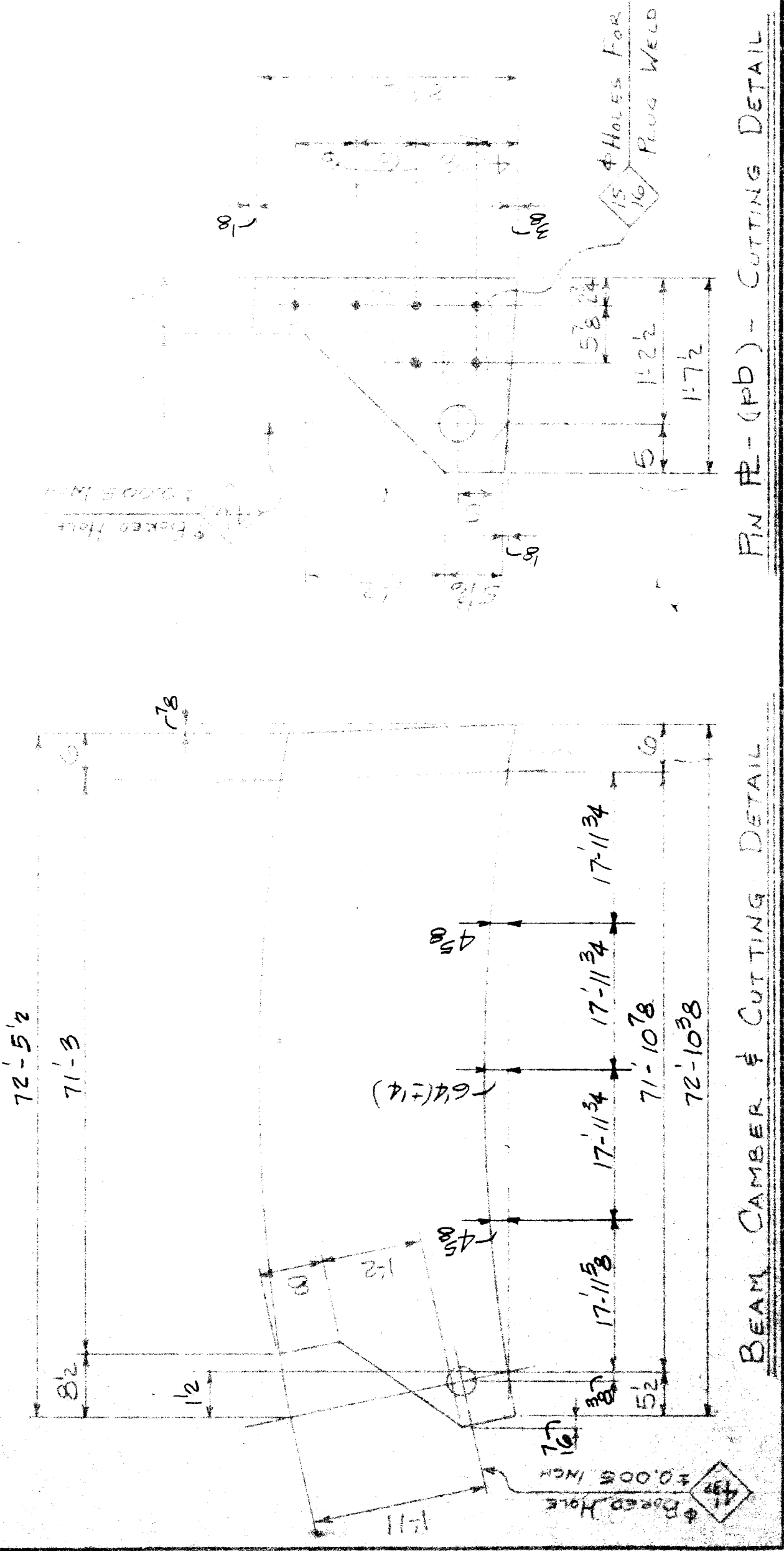
PHILIP ZWEIF & SONS
2100 E STRAW
GARY, IND.
BUILDING 1 1/2 MI. S. AVE. BRIDGE CROSSING THE P.C.R.R.
OWNER: CITY OF DETROIT, MICH.
LOCATION: DETROIT, MICH.
CONTRACTOR: VANTALA LEGAL CONSTRUCTION COMPANY
ARCHITECT: CITY ENGINEERING DEPT., CITY OF DETROIT, MICH.
TITLE: STRINGER SPAN 4

RIVETS: NONE
HOLES: 5/8" & 1/2"
PAINT: NONE

DATE: MAR 2 1977
DRAWN: JWC
CHKD: CJC
REV: []
SHEET 42 OF 53
CONTRACT 335



ONE - STRINGER - A42
LINE A SPAN 4



SHOP NOTES
1. SEE SHEET E-4 FOR GENERAL NOTES.
2. MATL: A586 U.N.

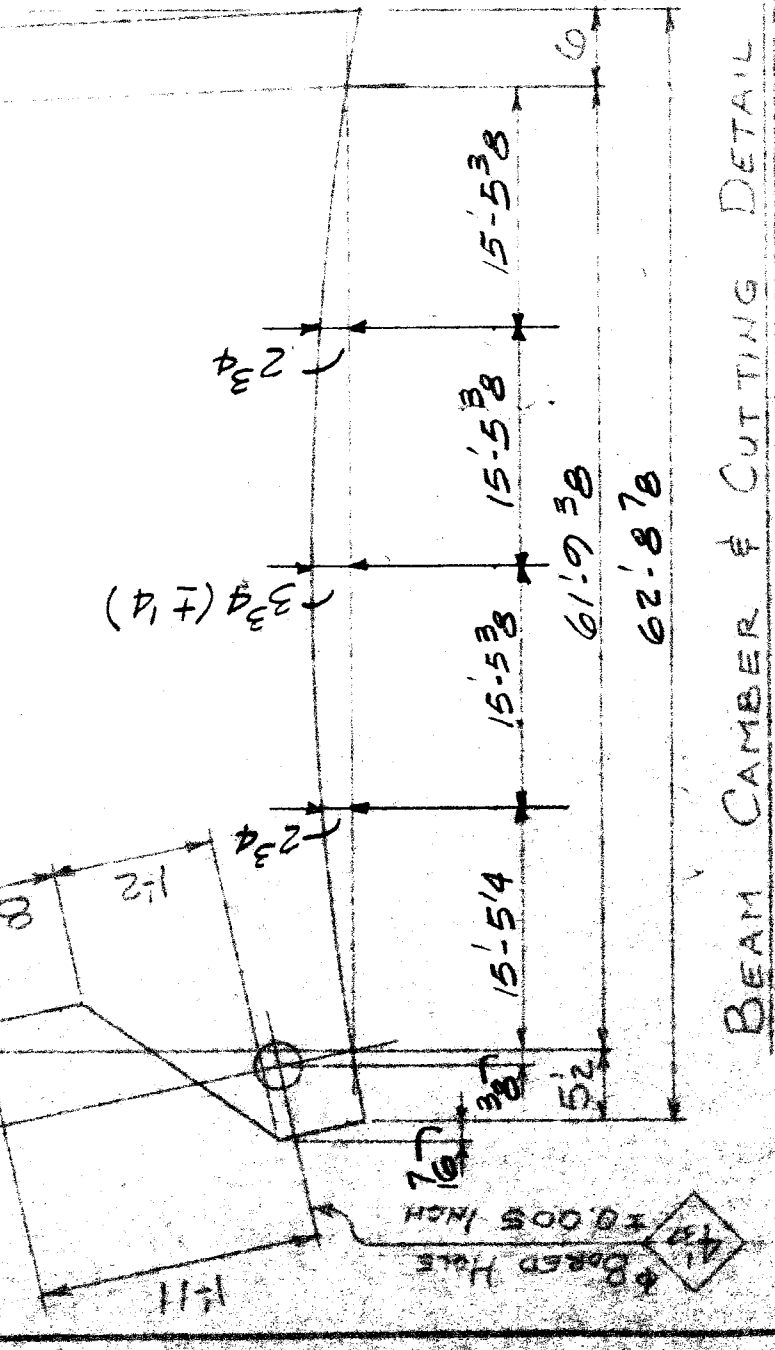
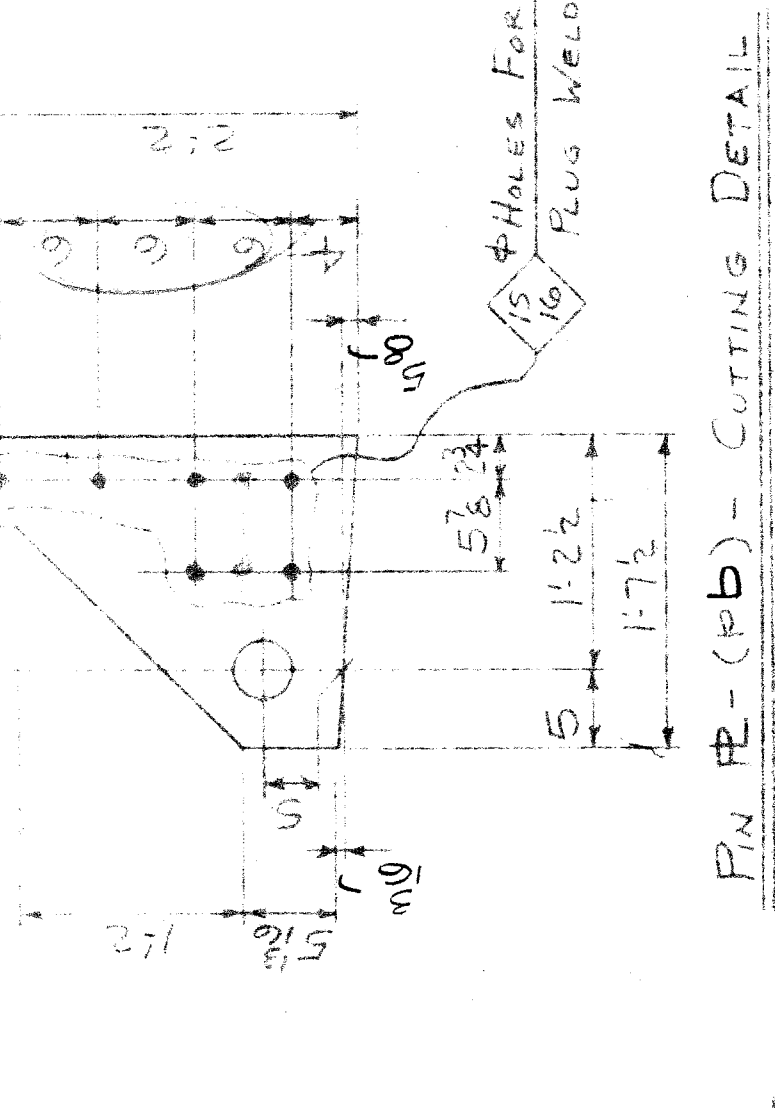
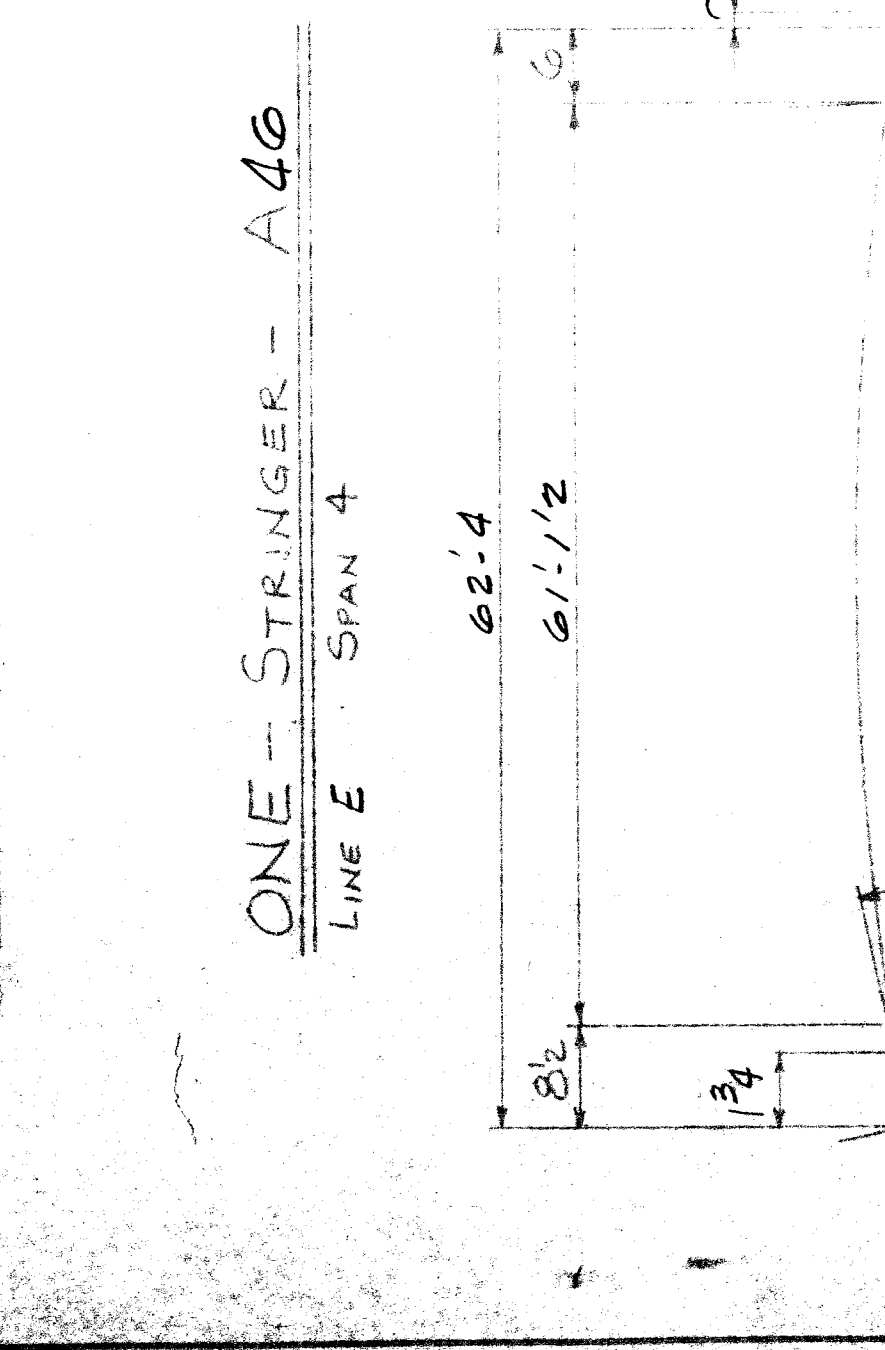
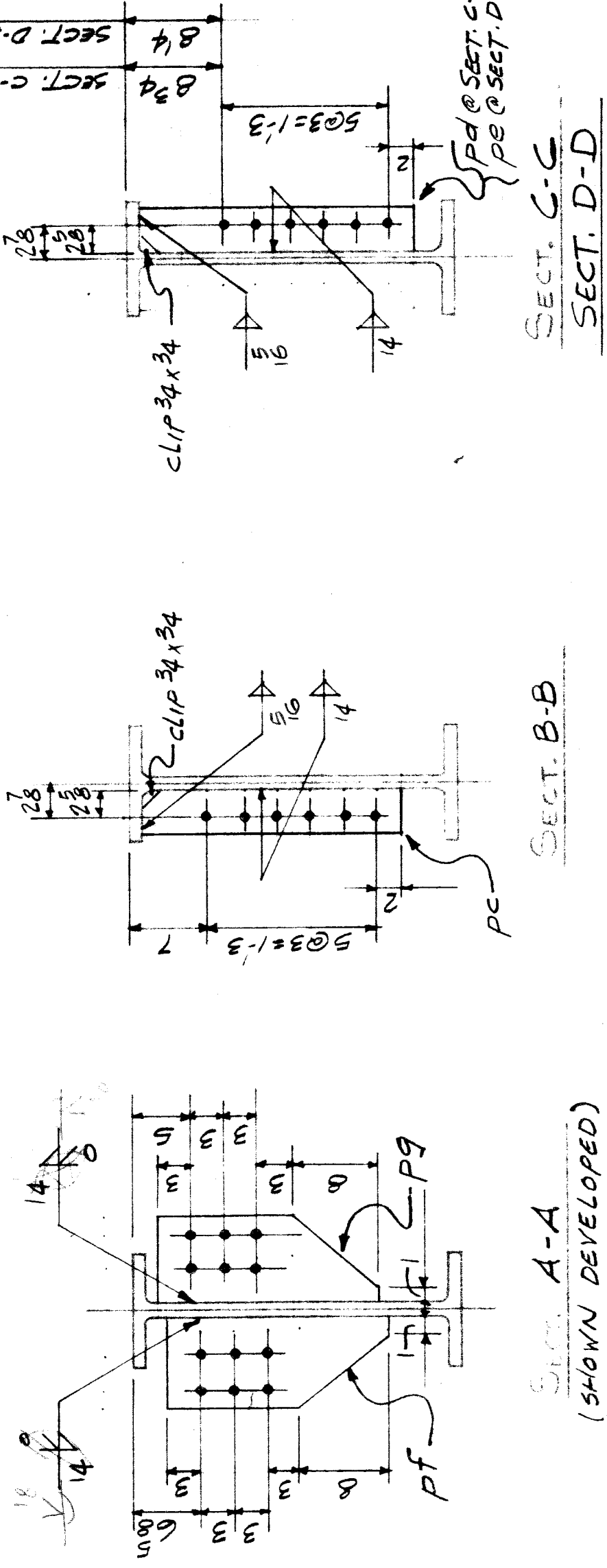
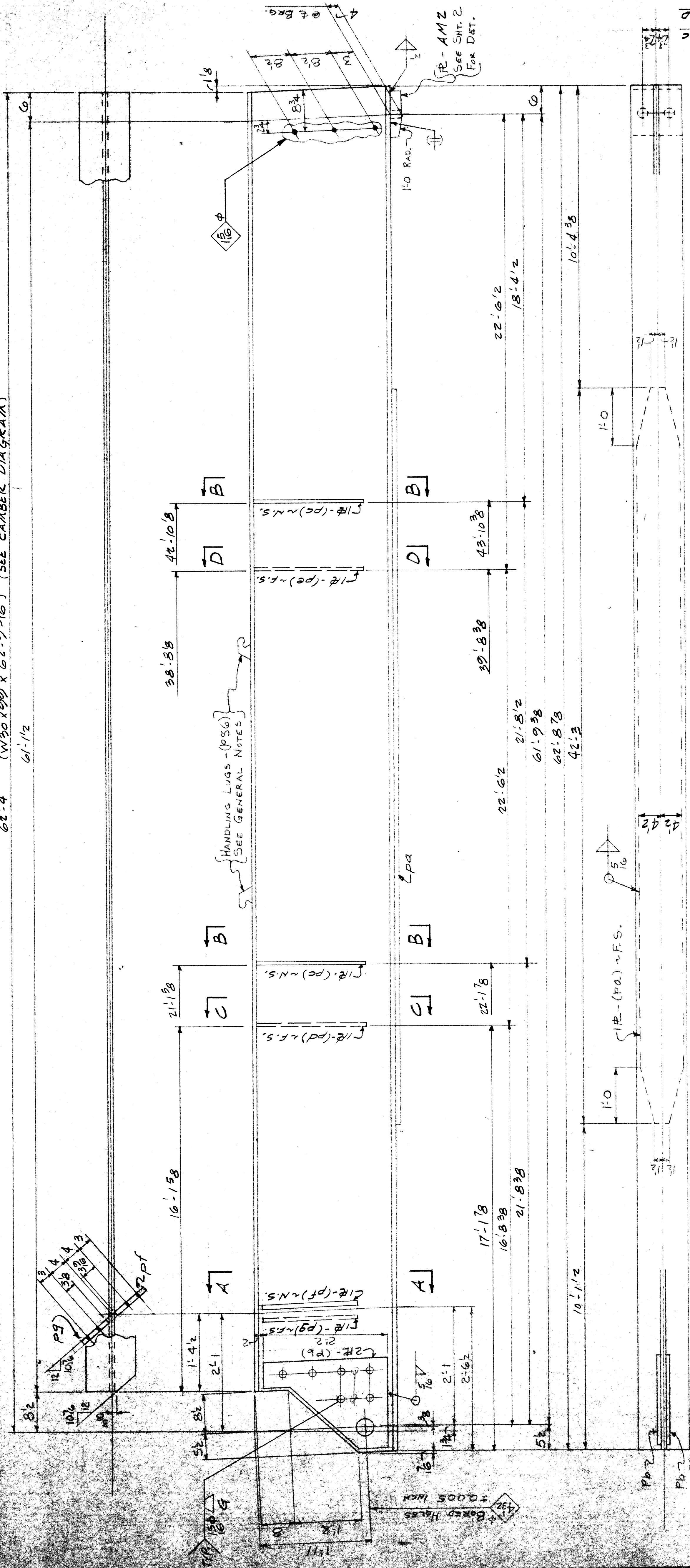
62-4 (W30 x 99 x 62'-9 1/2") (SEE CAMBER DIAGRAM)

LINE NO.	QTY	DESCRIPTION	SHAPE	REMARKS
1	1	STRINGER	W30 x 99	AMZ
2	1	W30 x 99	W30 x 99	AMZ
3	1	W30 x 99	W30 x 99	AMZ
4	2	PL 1/2 x 12	PL 1/2 x 12	AMZ
5	2	PL 1/2 x 12	PL 1/2 x 12	AMZ
6	1	PL 1/2 x 12	PL 1/2 x 12	AMZ
7	1	PL 1/2 x 12	PL 1/2 x 12	AMZ
8	1	PL 1/2 x 12	PL 1/2 x 12	AMZ
9	1	PL 1/2 x 12	PL 1/2 x 12	AMZ
10	2	PL 1/2 x 12	PL 1/2 x 12	AMZ
11	1	SOLE PL	SOLE PL	AMZ

CITY OF DETROIT
 CITY ENGINEERING DEPARTMENT
APPROVED
 FOR COMPLIANCE WITH CONTRACT No. PM 6552.
 THIS APPROVAL SHALL NOT RELIEVE THE CONTRACTOR
 OF ANY RESPONSIBILITY COVERED BY THE CONTRACT
 DATE: MAR 2 1977

PHILIP ZWEIF & SONS
 BUILDING BRANCH
 BUILDING BRANCH
 2108 E. BRADLEY AVE. BRIDGE CROSSING THE P.C.R.R.
 OWNER: CITY OF DETROIT, MICH.
 LOCATION: DETROIT, MICH.
 CONTRACTOR: WALTER J. GEISE, CONSTRUCTION COMPANY
 ARCHITECT: CITY ENGINEERING DEPT., CITY OF DETROIT, MICH.
 TITLE: STRINGER, SPAN 4
 DRAWN: J.W. DATE: 2/77
 CHECKED: C.A.C.
 PAINT: PAINT
 CONTRACT 335 SHEET 46 OF 53

SHOP NOTES
 1. SEE SHEET E4 FOR GENERAL NOTES.
 2. MATL: A 588 U.N.



ONE-STRINGER - A46
 LINE E SPAN 4

BEAM CAMBER & CUTTING DETAIL
 PIN PL - (PB) - CUTTING DETAIL

