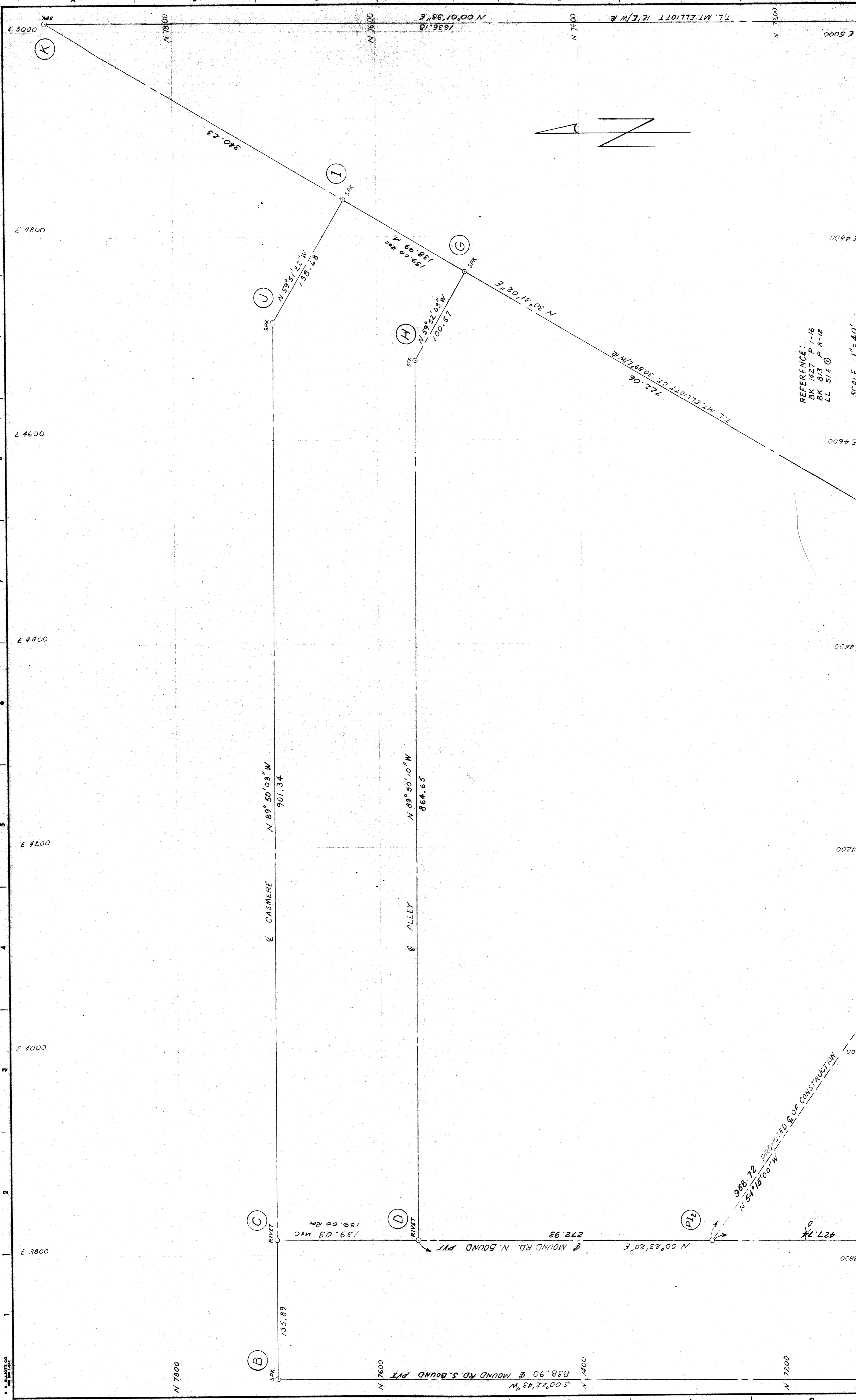


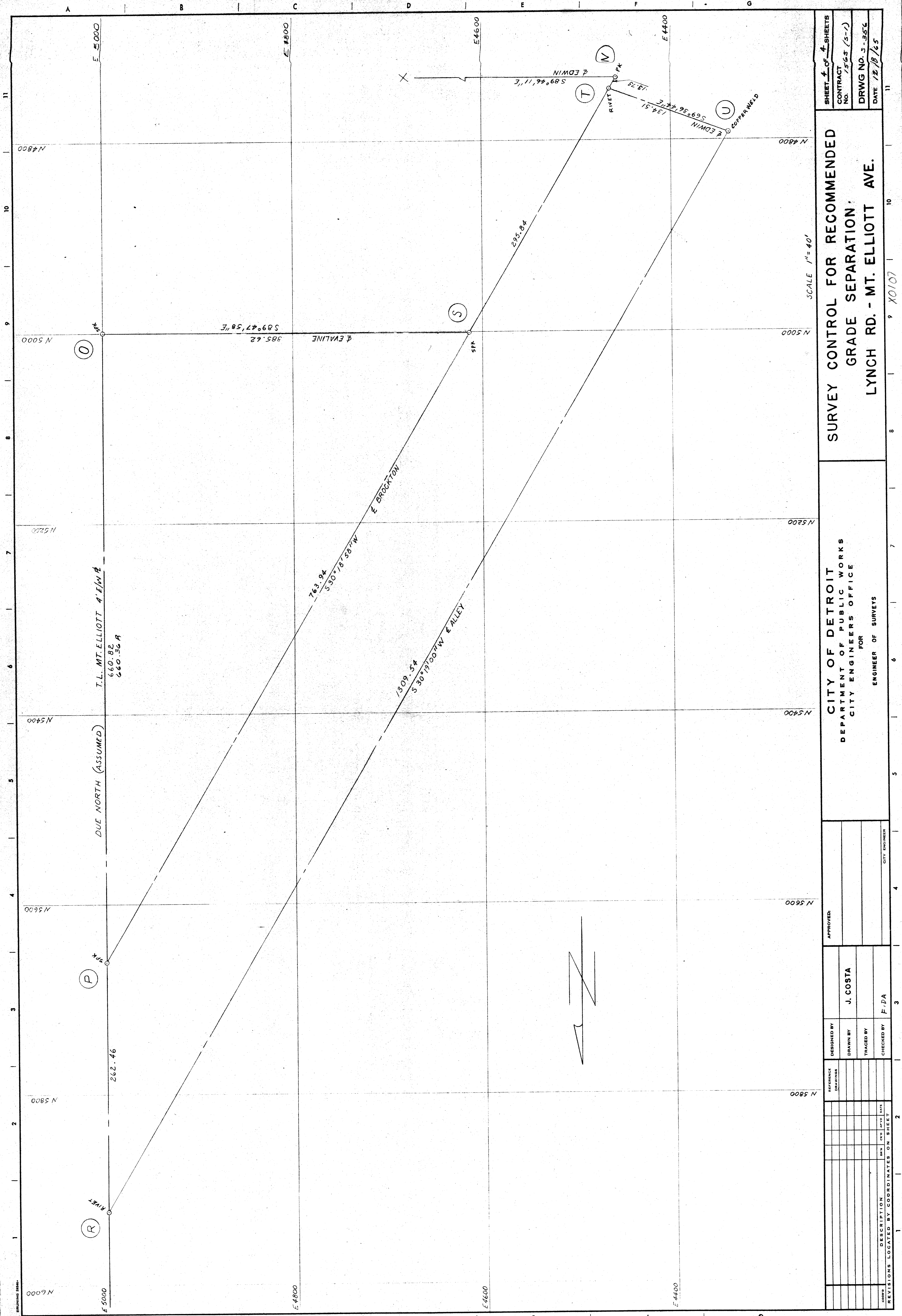
H. H. ELLIOTT CO.  
INCORPORATED  
1944



<b>SURVEY CONTROL FOR RECOMMENDED GRADE SEPARATION</b> <b>LYNCH RD. - MT. ELLIOTT AVE.</b>		SHEET 1 OF 4 SHEETS CONTRACT NO. 1525 (S-1) DRWG NO. S-35C DATE 12/8/45			
<b>CITY OF DETROIT</b> DEPARTMENT OF PUBLIC WORKS CITY ENGINEERS OFFICE FOR ENGINEER OF SURVEYS		REFERENCE: BK 1427 P 1-16 BK 813 P 8-12 LL 515 @ SCALE 1" = 40' 11			
DESIGNED BY	DRAWN BY	TRACED BY	CHECKED BY	APPROVED	
	J. COSTA	F.P.A.			
REVISIONS LOCATED BY COORDINATES ON SHEET					
COORD.	DESCRIPTION	BY	DATE	DATE	







T.L. MT. ELLIOTT 4'E/W R  
 660.82  
 660.36 R

DUE NORTH (ASSUMED)

262.46

763.94  
 S 30° 18' 58\"/>

E BROCKTON

1309.54  
 S 30° 19' 00\"/>

E ALLEY

293.84

S 89° 46' 11\"/>

134.51

137.77

137.77

137.77

137.77

137.77

137.77

137.77

137.77

137.77

137.77

137.77

137.77

137.77

137.77

137.77

137.77

137.77

137.77

137.77

137.77

137.77

137.77

137.77

137.77

137.77

137.77

137.77

137.77

137.77

137.77

137.77

137.77

137.77

137.77

137.77

SURVEY CONTROL FOR RECOMMENDED  
 GRADE SEPARATION  
 LYNCH RD. - MT. ELLIOTT AVE.

CITY OF DETROIT  
 DEPARTMENT OF PUBLIC WORKS  
 CITY ENGINEERS OFFICE  
 FOR  
 ENGINEER OF SURVEYS

APPROVED:

J. COSTA

F.P.A.

DESIGNED BY

DRAWN BY

TRACED BY

CHECKED BY

REFERENCE DRAWINGS

DESCRIPTION

REVISIONS LOCATED BY COORDINATES ON SHEET

SHEET 4 OF 4 SHEETS  
 CONTRACT No. 1563 (S-1)  
 DRWG NO. 3-352  
 DATE 12/18/65

SCALE 1" = 40'

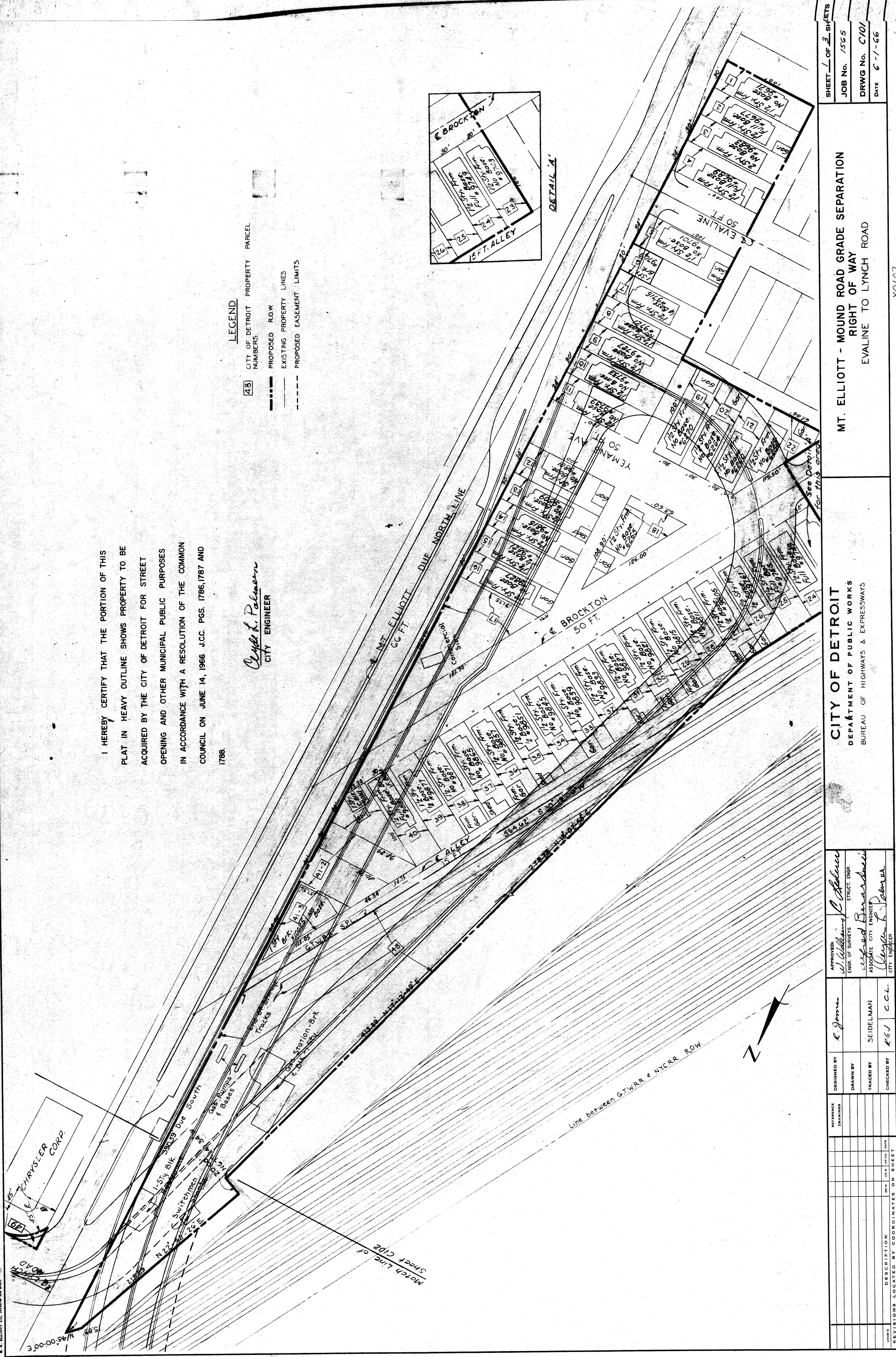
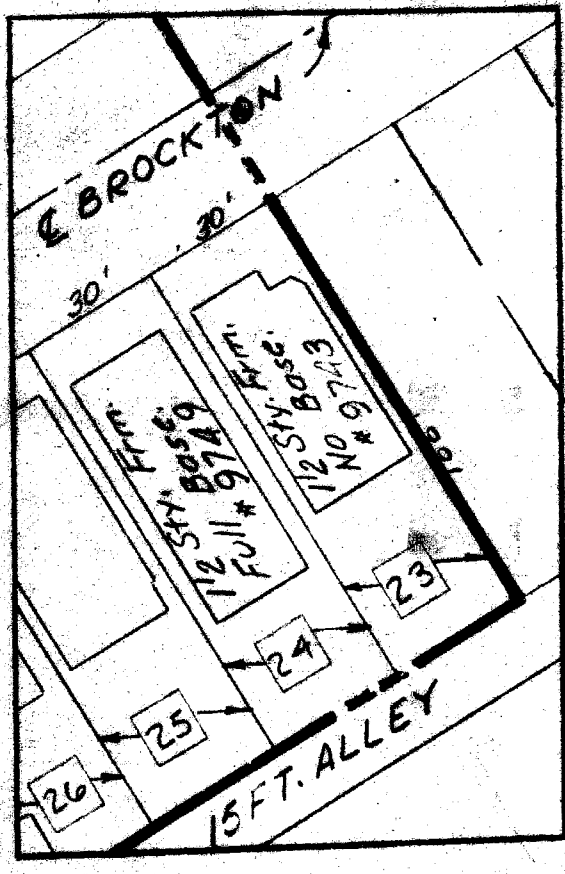
11 10 9 8 7 6 5 4 3 2 1

I HEREBY CERTIFY THAT THE PORTION OF THIS PLAT IN HEAVY OUTLINE SHOWS PROPERTY TO BE ACQUIRED BY THE CITY OF DETROIT FOR STREET OPENING AND OTHER MUNICIPAL PUBLIC PURPOSES IN ACCORDANCE WITH A RESOLUTION OF THE COMMON COUNCIL ON JUNE 14, 1966 J.C.C. PGS. 1786, 1787 AND 1788.

*Clyde L. Palmer*  
CITY ENGINEER

**LEGEND**

- ▭ CITY OF DETROIT PROPERTY PARCEL NUMBERS
- PROPOSED R.O.W.
- EXISTING PROPERTY LINES
- - - PROPOSED EASEMENT LIMITS



SHEET 1 OF 3 SHEETS  
JOB No. 1565  
DRWG No. C101  
DATE 6-1-66

MT. ELLIOTT - MOUND ROAD GRADE SEPARATION  
RIGHT OF WAY  
EVALINE TO LYNCH ROAD

CITY OF DETROIT  
DEPARTMENT OF PUBLIC WORKS  
BUREAU OF HIGHWAYS & EXPRESSWAYS

APPROVED:  
*W. Williams*  
ENGR. OF SURVEYS  
*C. Palmer*  
STRUCT. ENGR.  
ASSOCIATE CITY ENGINEER  
CITY ENGINEER

DESIGNED BY: *R. Jones*  
DRAWN BY:  
TRACED BY: SEIDELMAN  
CHECKED BY: *R.G.J.* C.C.L.

NO.	DESCRIPTION	DATE

REVISIONS LOCATED BY COORDINATES ON SHEET

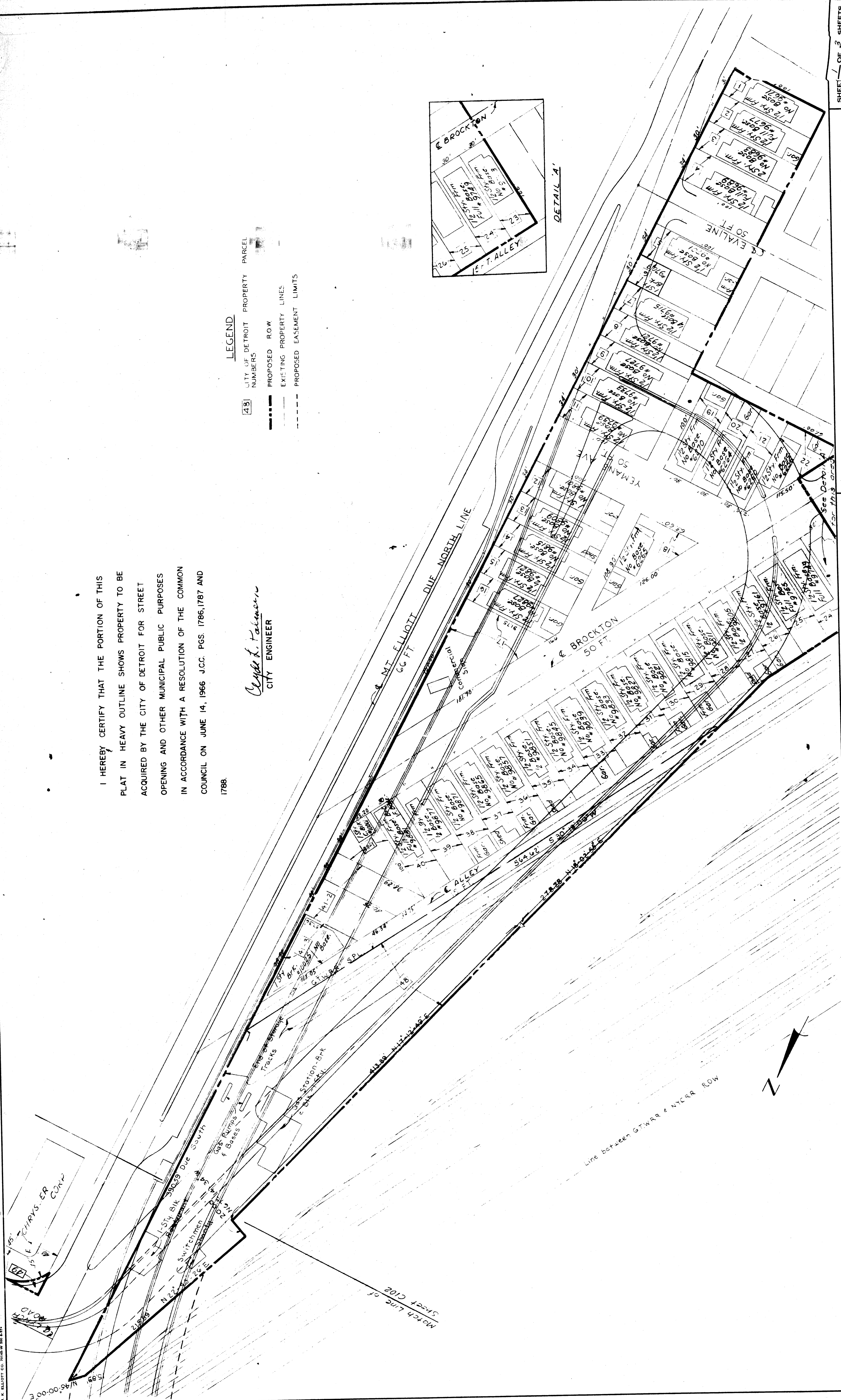
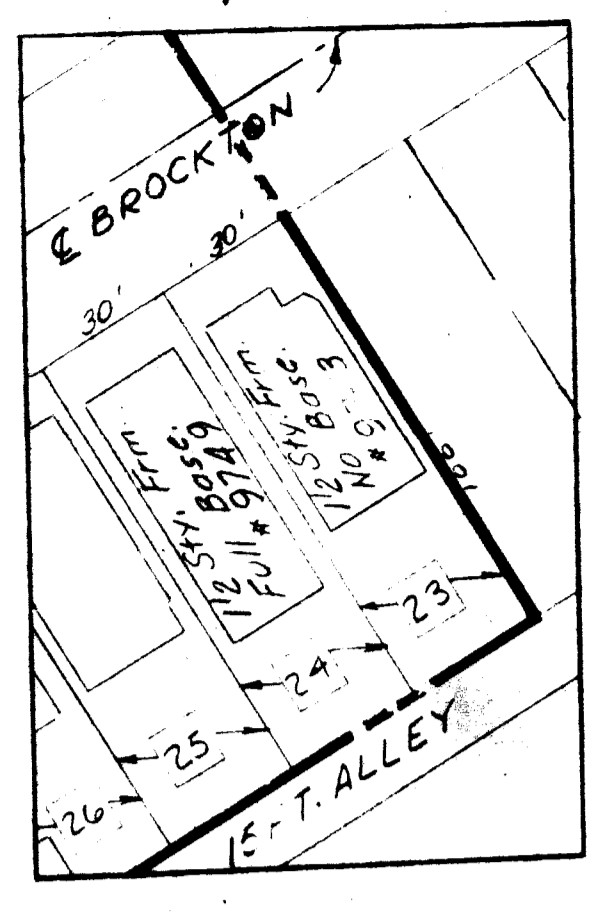
X0107

I HEREBY CERTIFY THAT THE PORTION OF THIS PLAT IN HEAVY OUTLINE SHOWS PROPERTY TO BE ACQUIRED BY THE CITY OF DETROIT FOR STREET OPENING AND OTHER MUNICIPAL PUBLIC PURPOSES IN ACCORDANCE WITH A RESOLUTION OF THE COMMON COUNCIL ON JUNE 14, 1966 J.C.C. PGS. 1786, 1787 AND 1788.

*Clyde L. Palmer*  
CITY ENGINEER

**LEGEND**

- 43 CITY OF DETROIT PROPERTY PARCEL NUMBERS
- PROPOSED ROW
- - - EXISTING PROPERTY LINES
- - - PROPOSED EASEMENT LIMITS



SHEET 1 OF 3 SHEETS  
JOB No. 1565  
DRWS No. C101  
DATE 6-1-66

MT. ELLIOTT - MOUND ROAD GRADE SEPARATION  
RIGHT OF WAY  
EVALINE TO LYNCH ROAD

CITY OF DETROIT  
DEPARTMENT OF PUBLIC WORKS  
BUREAU OF HIGHWAYS & EXPRESSWAYS

APPROVED: *Clyde L. Palmer*  
CITY ENGINEER

DESIGNED BY: *E. J. ...*  
DRAWN BY: *SEIDELMAN*  
TRACED BY: *GGJ*  
CHECKED BY: *C.C.L.*

REVISIONS LOCATED BY COORDINATES ON SHEET	DESCRIPTION	DATE

X0107

