

PLAN
SCALE: 1"=15'

NOTES:
WORK THIS SHEET WITH SHEETS XX THRU XX.

Baker
WTA
BAKER AND ASSOCIATES
WALTER TEAMER AND ASSOCIATES, INC.
A JOINT ASSOCIATION
18431 JAMES COUZENS DETROIT, MI 48235

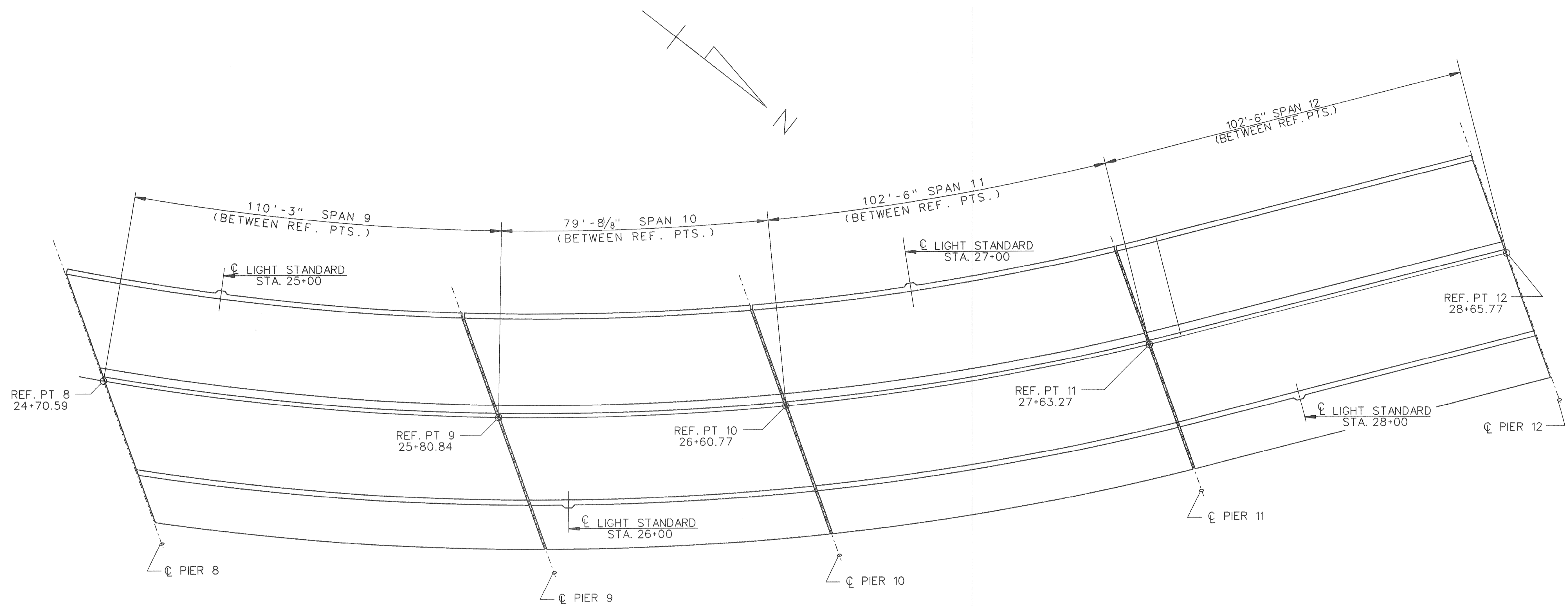
MICHIGAN DEPARTMENT OF TRANSPORTATION
MOUNT ELLIOTT-MOUND ROAD BRIDGE
IN THE CITY OF DETROIT
LIGHTING DETAILS

REVISIONS			
NO.	DESCRIPTION	DATE	BY

APPROVED _____
DESIGN SUPERVISING ENGINEER

SQUAD BOSS	NAME	DATE
DRAWN BY	NAME	DATE
CHECKED BY	NAME	DATE
SHEET		OF

f:\20329\final\elec1316.dgn



PLAN
SCALE:1"=15'

NOTES:
WORK THIS SHEET WITH SHEETS XX THRU XX.

Baker
WTA
BAKER AND ASSOCIATES
WALTER TEAMER AND ASSOCIATES, INC.
A JOINT ASSOCIATION
18431 JAMES COUZENS DETROIT, MI 48235

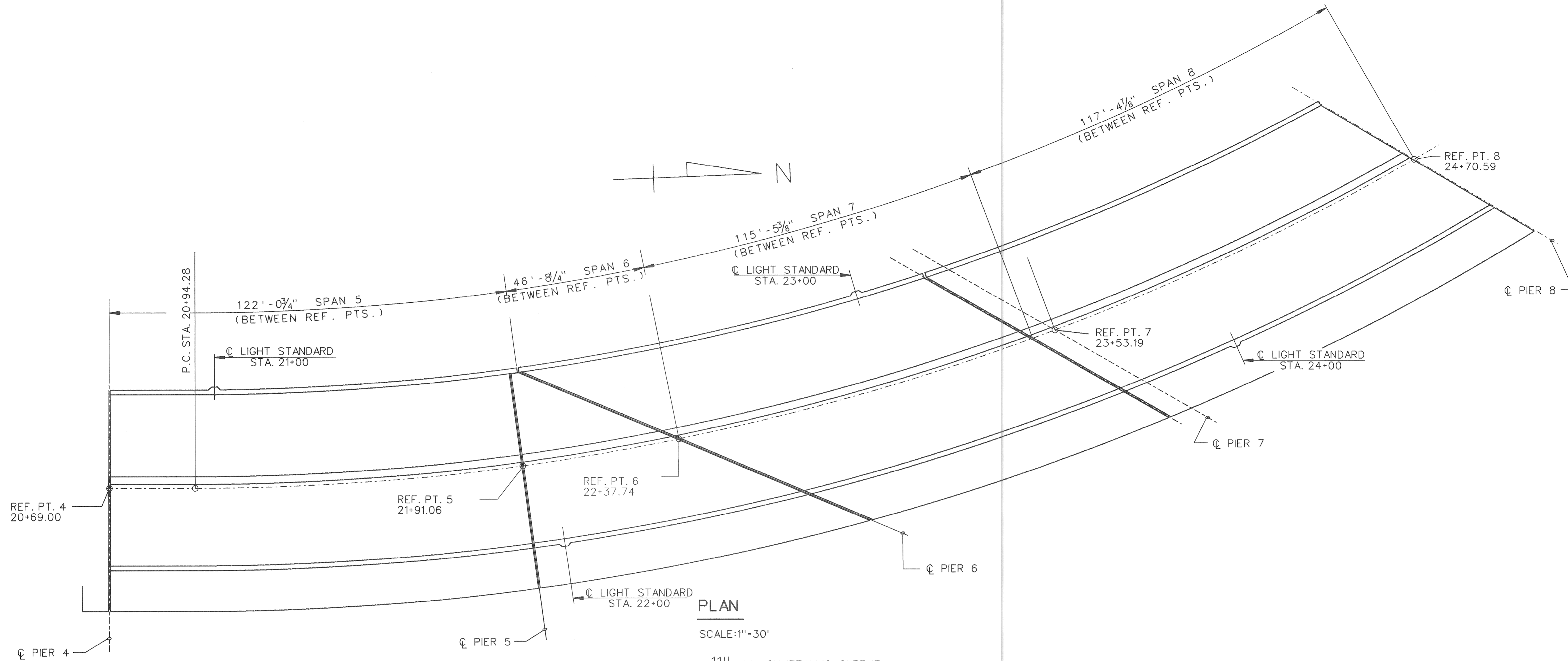
REVISIONS			
NO.	DESCRIPTION	DATE	BY

MICHIGAN DEPARTMENT OF TRANSPORTATION
MOUNT ELLIOTT-MOUND ROAD BRIDGE
IN THE CITY OF DETROIT
LIGHTING DETAILS

APPROVED _____
DESIGN SUPERVISING ENGINEER

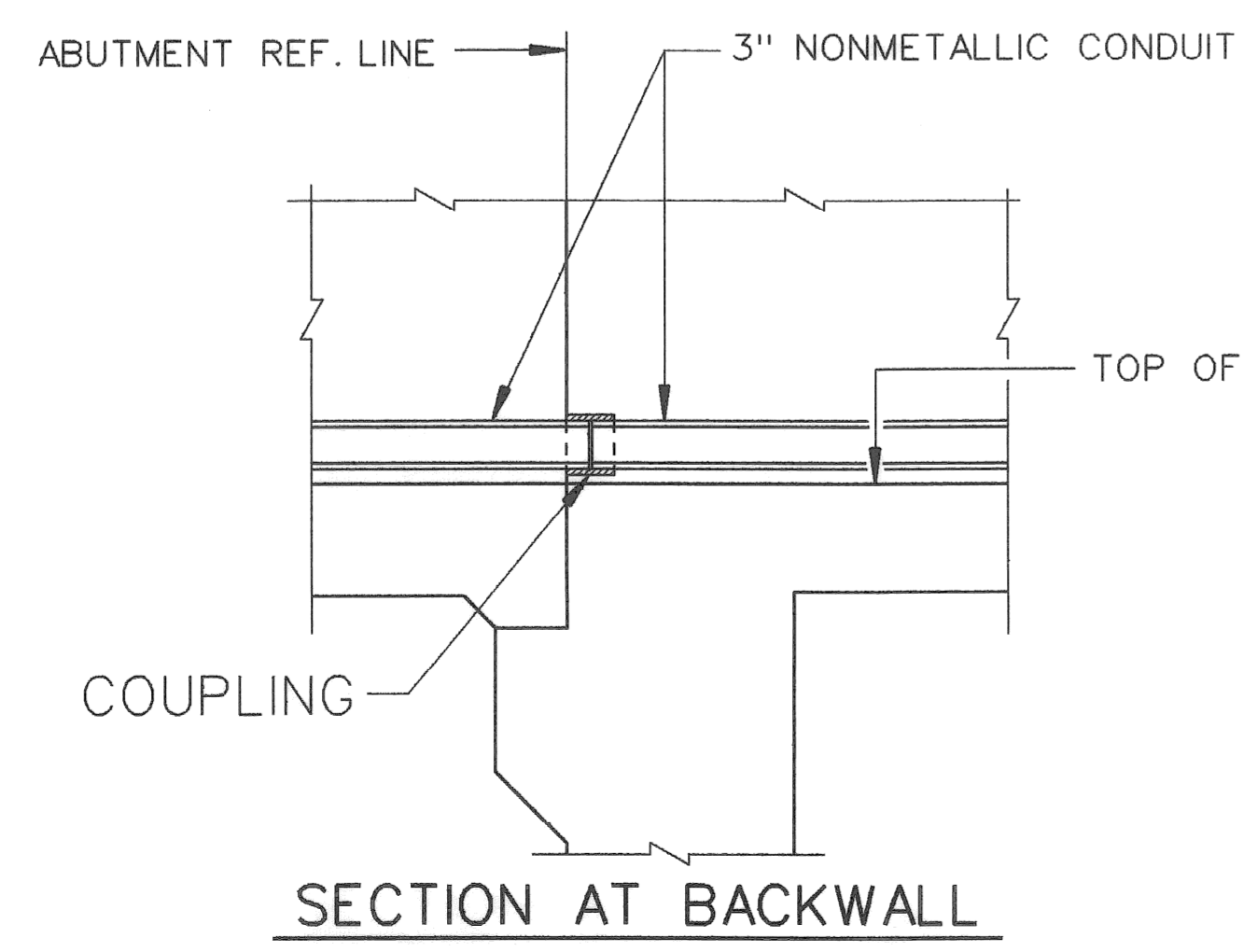
SQUAD BOSS	NAME	DATE
DRAWN BY	NAME	DATE
CHECKED BY	NAME	DATE
SHEET		OF

f:\20329\find\elec912.dgn

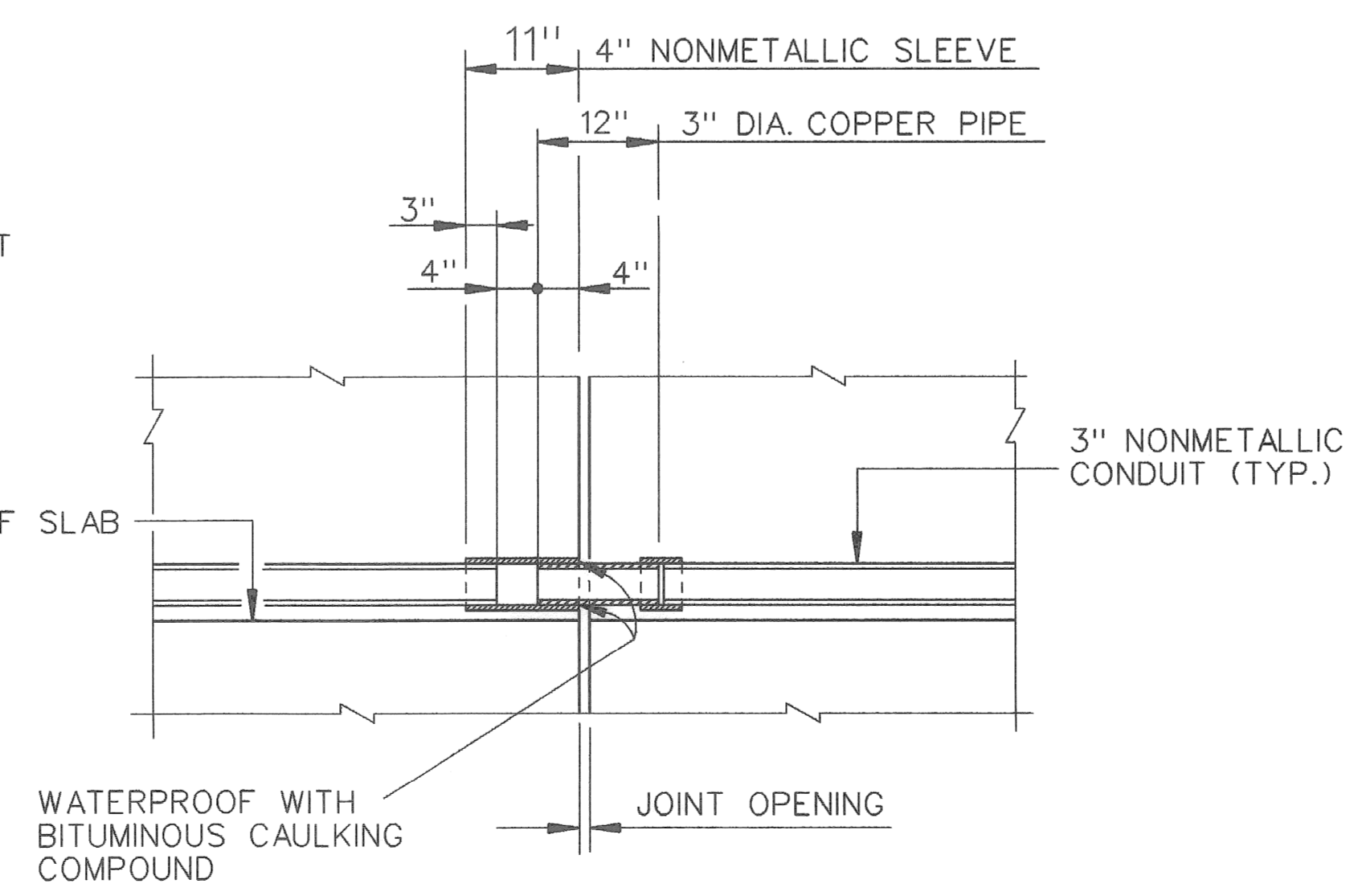


PLAN

SCALE: 1" = 30'



SECTION AT BACKWALL



SECTION AT TRANSVERSE DECK JOINTS

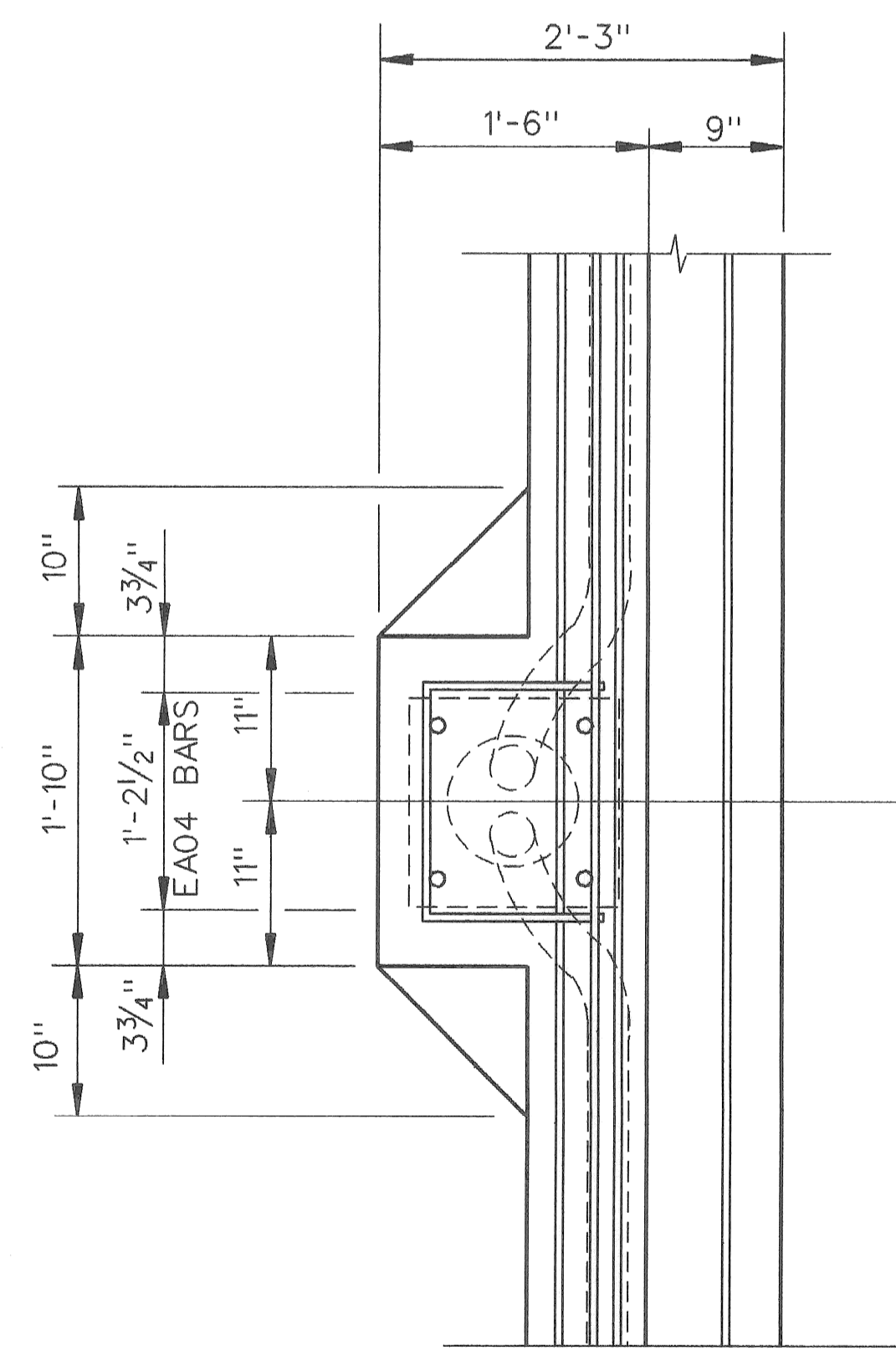
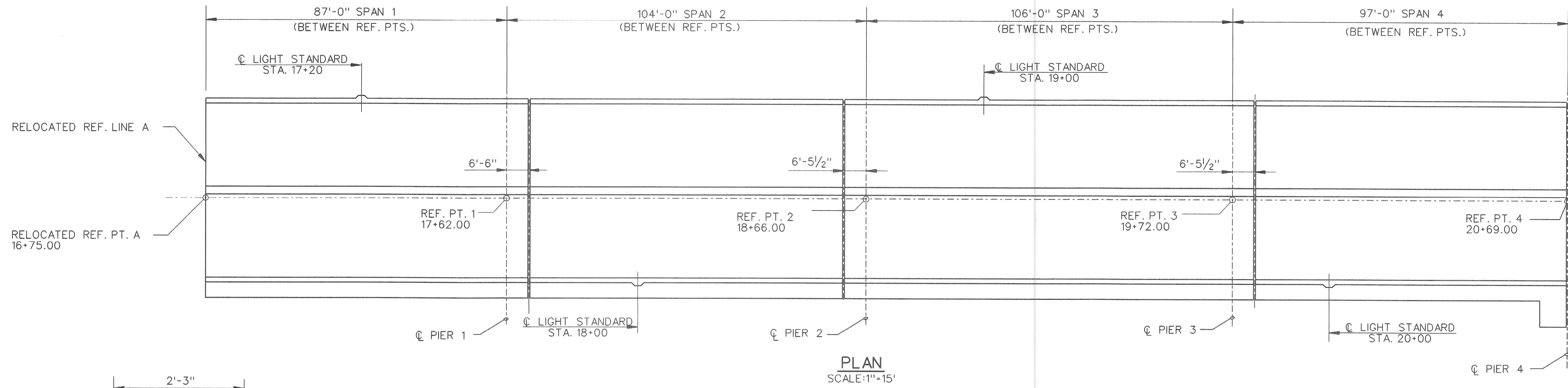
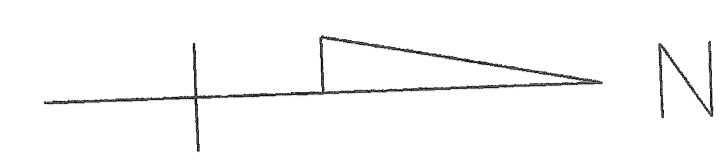
NOTES:
WORK THIS SHEET WITH SHEETS XX THRU XX.

MICHIGAN DEPARTMENT OF TRANSPORTATION
MOUNT ELLIOTT-MOUND ROAD BRIDGE
IN THE CITY OF DETROIT
LIGHTING DETAILS

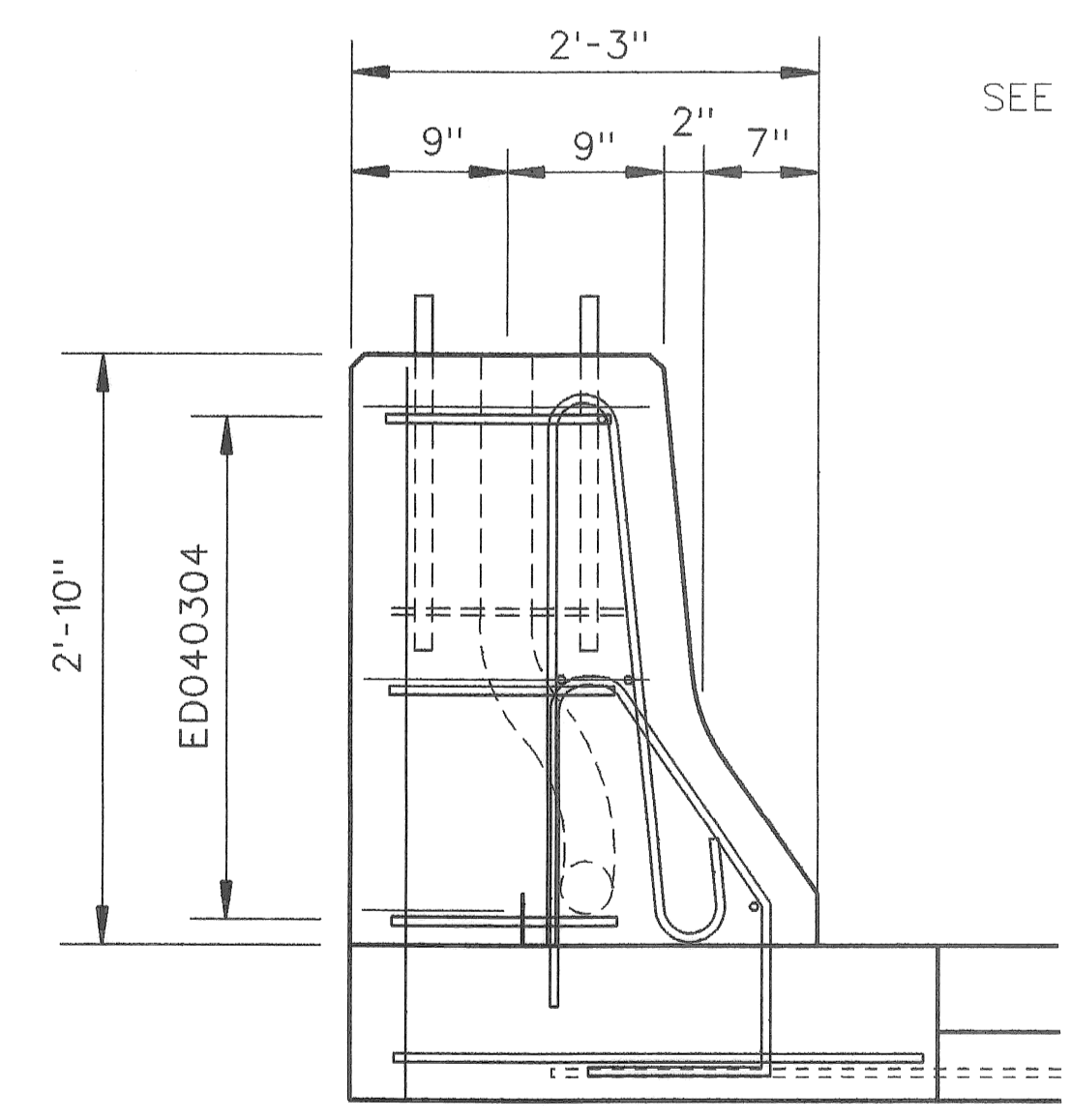
REVISIONS			
NO.	DESCRIPTION	DATE	BY

APPROVED _____
DESIGN SUPERVISING ENGINEER

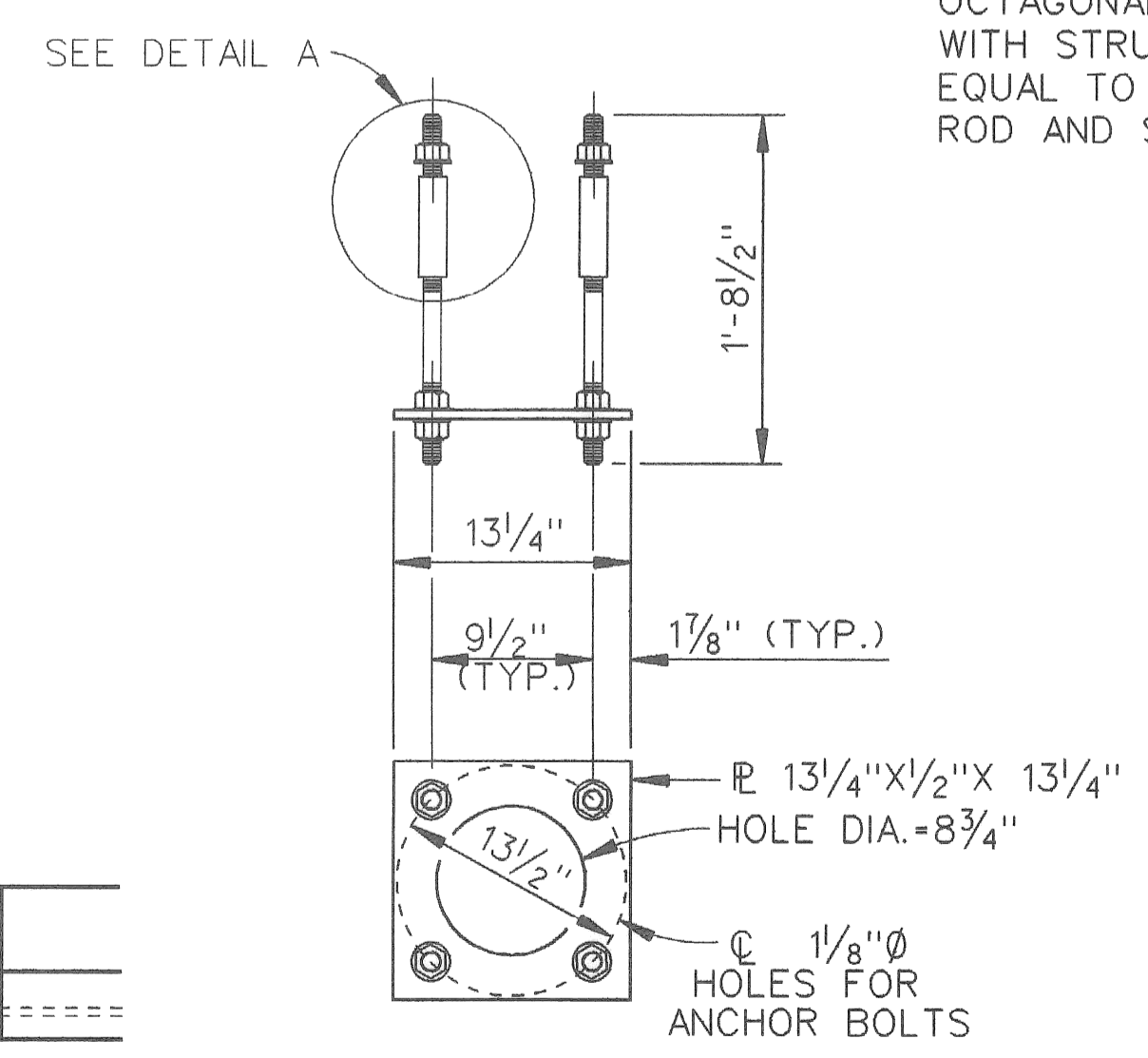
SQUAD BOSS	NAME	DATE
DRAWN BY	NAME	DATE
CHECKED BY	NAME	DATE
SHEET	OF	



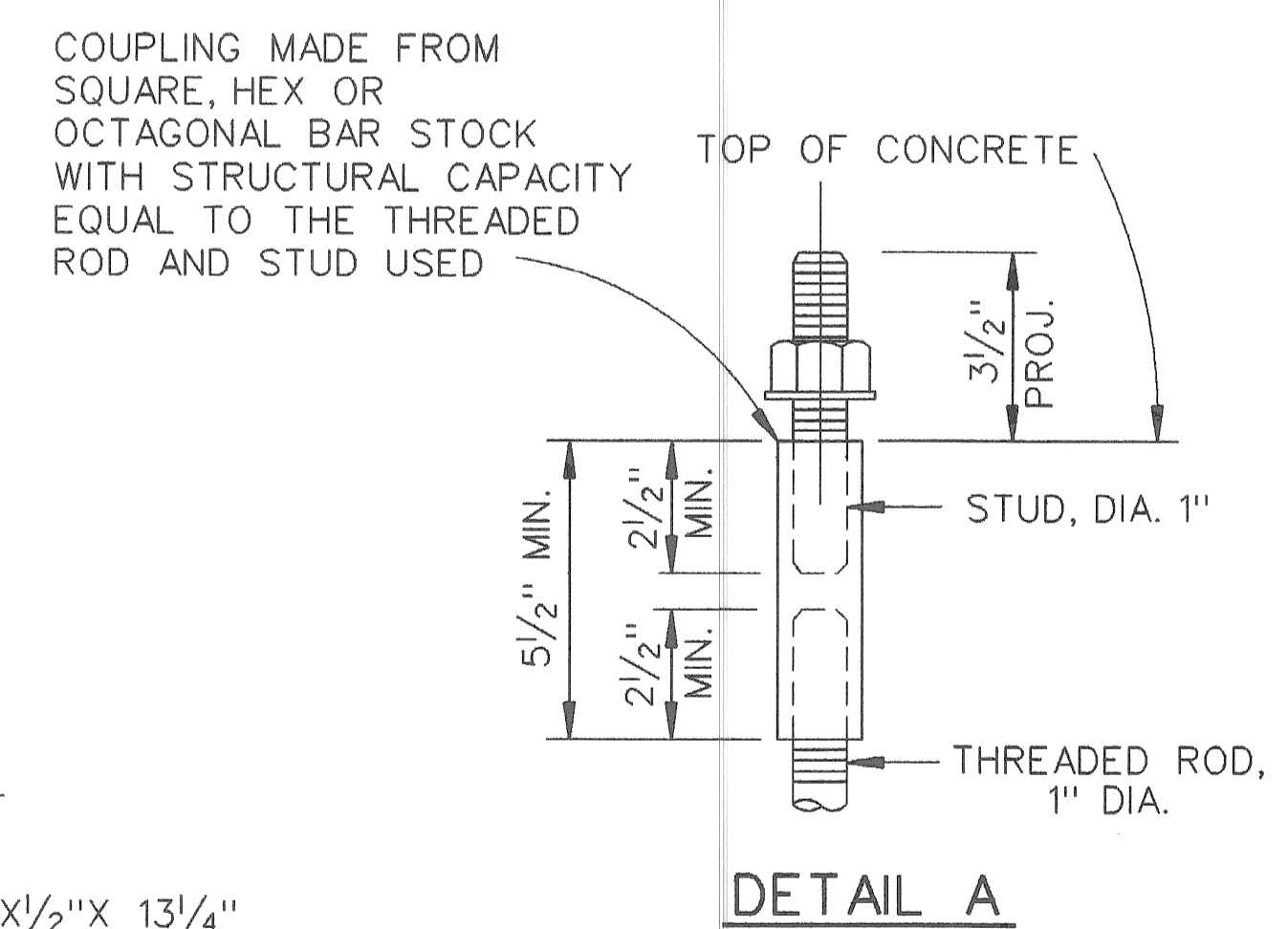
PLAN VIEW



SECTION



ANCHOR BOLT ASSEMBLY



DETAIL A

NOTES:

- ANCHOR BOLTS (4): 1" DIA. X 1'-2" THREADED ROD AND 1" DIA. STUD WITH 3 HEX NUTS, 3 WASHERS AND ONE COUPLING.
- ANCHOR BOLT ASSEMBLY: THE ASSEMBLY SHALL BE GALVANIZED IN ACCORDANCE WITH ASTM A-153.
- THE BID ITEM "LIGHT STANDARD ANCHOR ASSEMBLY FURNISHED AND PLACED" INCLUDES ALL WORK AND MATERIAL REQUIRED FOR INSTALLATION.
- FOR LIGHT STANDARD ANCHOR BOLT ASSEMBLY DETAILS, SEE STANDARD PLAN XI-103.
- WORK THIS SHEET WITH SHEETS XX THRU XX.

Baker
WTA
BAKER AND ASSOCIATES
WALTER TEAMER AND ASSOCIATES, INC.
A JOINT ASSOCIATION
18431 JAMES COUZENS DETROIT, MI 48235

MICHIGAN DEPARTMENT OF TRANSPORTATION
MOUNT ELLIOTT-MOUND ROAD BRIDGE
IN THE CITY OF DETROIT
LIGHTING DETAILS

REVISIONS			
NO.	DESCRIPTION	DATE	BY

APPROVED _____
DESIGN SUPERVISING ENGINEER

SQUAD BOSS	NAME	DATE
DRAWN BY	NAME	DATE
CHECKED BY	NAME	DATE
SHEET	OF	

f:\20329\final\elec14.dgn