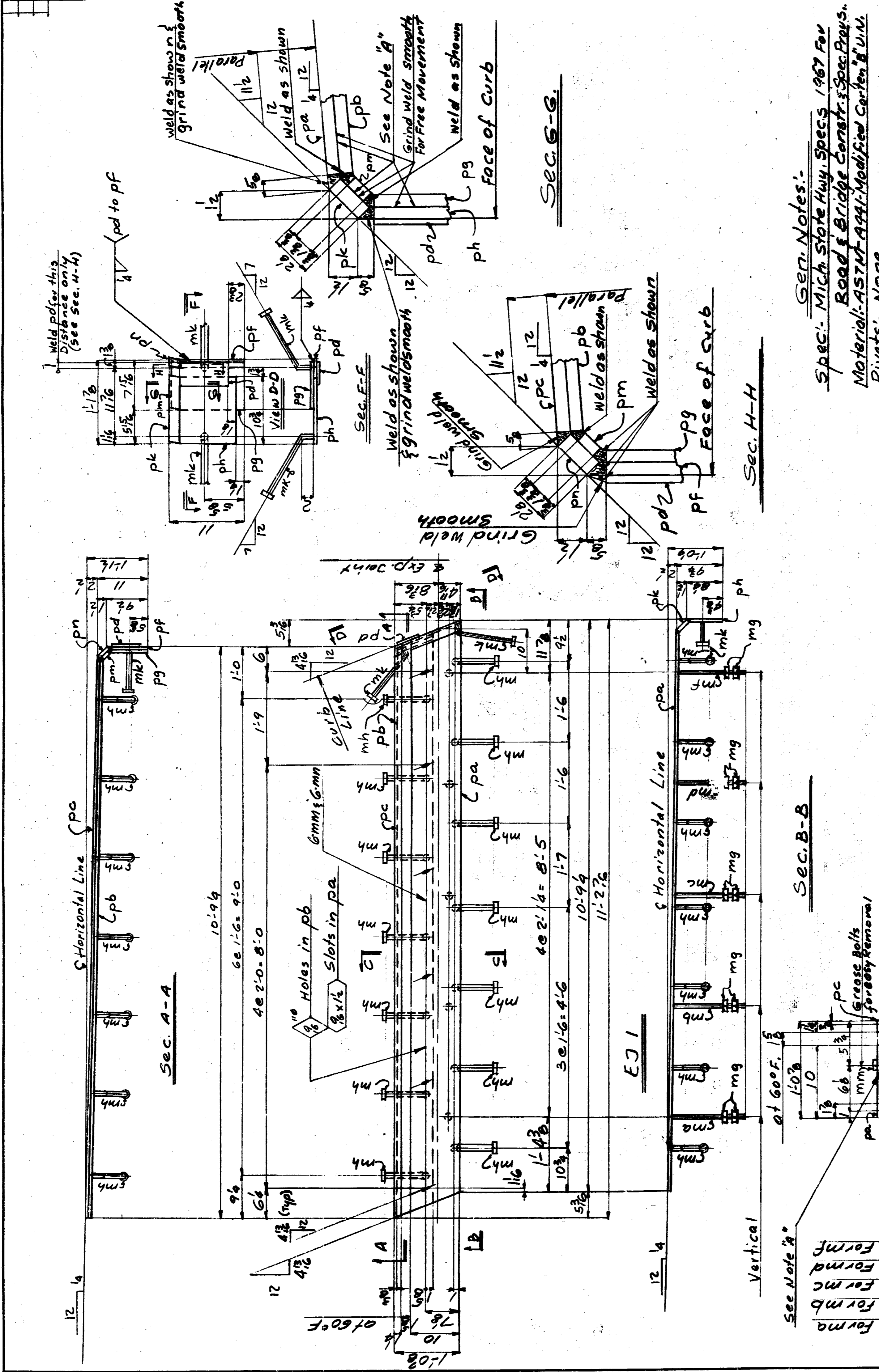
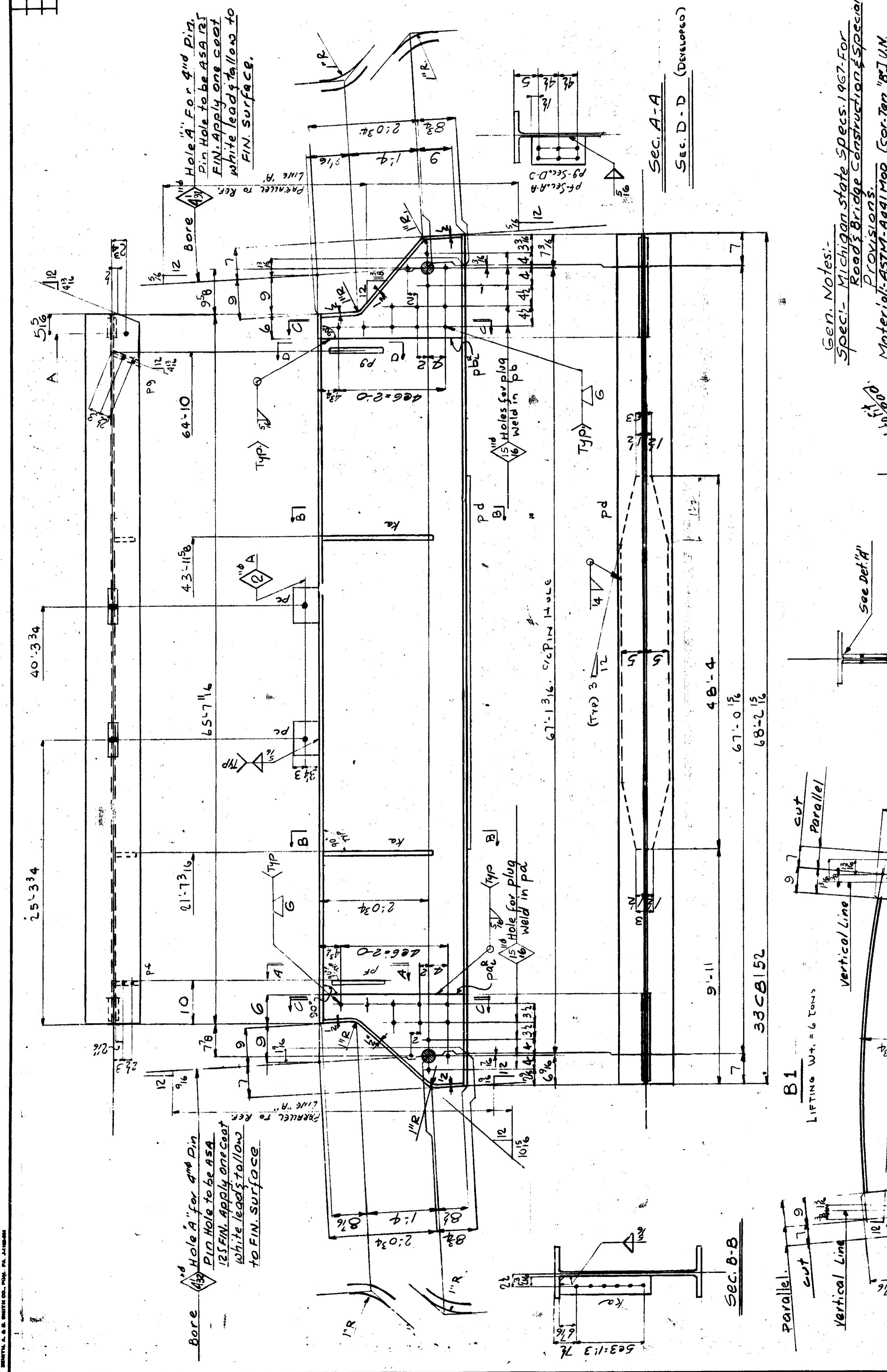


ITEM NO.	QUANTITY	UNIT	DESCRIPTION	MATERIAL	SPECIFICATION	GRADE	MARK	DATE	BY	CHECKED	APPROVED	REVISIONS	MATERIAL		ITEM	
													QTY	UNIT		
1	1	EA	EXPANSION JOINT	704E21												
2	1	EA	EXPANSION JOINT	704E21												
3	1	EA	EXPANSION JOINT	704E21												
4	1	EA	EXPANSION JOINT	704E21												
5	1	EA	EXPANSION JOINT	704E21												
6	1	EA	EXPANSION JOINT	704E21												
7	1	EA	EXPANSION JOINT	704E21												
8	1	EA	EXPANSION JOINT	704E21												
9	1	EA	EXPANSION JOINT	704E21												
10	1	EA	EXPANSION JOINT	704E21												
11	1	EA	EXPANSION JOINT	704E21												
12	1	EA	EXPANSION JOINT	704E21												
13	1	EA	EXPANSION JOINT	704E21												
14	1	EA	EXPANSION JOINT	704E21												
15	1	EA	EXPANSION JOINT	704E21												
16	1	EA	EXPANSION JOINT	704E21												
17	1	EA	EXPANSION JOINT	704E21												
18	1	EA	EXPANSION JOINT	704E21												
19	1	EA	EXPANSION JOINT	704E21												
20	1	EA	EXPANSION JOINT	704E21												
21	1	EA	EXPANSION JOINT	704E21												
22	1	EA	EXPANSION JOINT	704E21												
23	1	EA	EXPANSION JOINT	704E21												
24	1	EA	EXPANSION JOINT	704E21												
25	1	EA	EXPANSION JOINT	704E21												
26	1	EA	EXPANSION JOINT	704E21												
27	1	EA	EXPANSION JOINT	704E21												
28	1	EA	EXPANSION JOINT	704E21												
29	1	EA	EXPANSION JOINT	704E21												
30	1	EA	EXPANSION JOINT	704E21												
31	1	EA	EXPANSION JOINT	704E21												
32	1	EA	EXPANSION JOINT	704E21												
33	1	EA	EXPANSION JOINT	704E21												
34	1	EA	EXPANSION JOINT	704E21												
35	1	EA	EXPANSION JOINT	704E21												
36	1	EA	EXPANSION JOINT	704E21												
37	1	EA	EXPANSION JOINT	704E21												
38	1	EA	EXPANSION JOINT	704E21												
39	1	EA	EXPANSION JOINT	704E21												
40	1	EA	EXPANSION JOINT	704E21												
41	1	EA	EXPANSION JOINT	704E21												
42	1	EA	EXPANSION JOINT	704E21												
43	1	EA	EXPANSION JOINT	704E21												
44	1	EA	EXPANSION JOINT	704E21												
45	1	EA	EXPANSION JOINT	704E21												
46	1	EA	EXPANSION JOINT	704E21												
47	1	EA	EXPANSION JOINT	704E21												
48	1	EA	EXPANSION JOINT	704E21												
49	1	EA	EXPANSION JOINT	704E21												
50	1	EA	EXPANSION JOINT	704E21												
51	1	EA	EXPANSION JOINT	704E21												
52	1	EA	EXPANSION JOINT	704E21												
53	1	EA	EXPANSION JOINT	704E21												
54	1	EA	EXPANSION JOINT	704E21												
55	1	EA	EXPANSION JOINT	704E21												
56	1	EA	EXPANSION JOINT	704E21												
57	1	EA	EXPANSION JOINT	704E21												
58	1	EA	EXPANSION JOINT	704E21												
59	1	EA	EXPANSION JOINT	704E21												
60	1	EA	EXPANSION JOINT	704E21												
61	1	EA	EXPANSION JOINT	704E21												
62	1	EA	EXPANSION JOINT	704E21												
63	1	EA	EXPANSION JOINT	704E21												
64	1	EA	EXPANSION JOINT	704E21												
65	1	EA	EXPANSION JOINT	704E21												
66	1	EA	EXPANSION JOINT	704E21												
67	1	EA	EXPANSION JOINT	704E21												
68	1	EA	EXPANSION JOINT	704E21												
69	1	EA	EXPANSION JOINT	704E21												
70	1	EA	EXPANSION JOINT	704E21												
71	1	EA	EXPANSION JOINT	704E21												
72	1	EA	EXPANSION JOINT	704E21												
73	1	EA	EXPANSION JOINT	704E21												
74	1	EA	EXPANSION JOINT	704E21												
75	1	EA	EXPANSION JOINT	704E21												
76	1	EA	EXPANSION JOINT	704E21												
77	1	EA	EXPANSION JOINT	704E21												
78	1	EA	EXPANSION JOINT	704E21												
79	1	EA	EXPANSION JOINT	704E21												
80	1	EA	EXPANSION JOINT	704E21												
81	1	EA	EXPANSION JOINT	704E21												
82	1	EA	EXPANSION JOINT	704E21												
83	1	EA	EXPANSION JOINT	704E21												
84	1	EA	EXPANSION JOINT	704E21												
85	1	EA	EXPANSION JOINT	704E21												
86	1	EA	EXPANSION JOINT	704E21												
87	1	EA	EXPANSION JOINT	704E21												
88	1	EA	EXPANSION JOINT	704E21												
89	1	EA	EXPANSION JOINT	704E21												
90	1	EA	EXPANSION JOINT	704E21												
91	1	EA	EXPANSION JOINT	704E21												
92	1	EA	EXPANSION JOINT	704E21												
93	1	EA	EXPANSION JOINT	704E21												
94	1	EA	EXPANSION JOINT	704E21												
95	1	EA	EXPANSION JOINT	704E21												
96	1	EA	EXPANSION JOINT	704E21												
97	1	EA	EXPANSION JOINT	704E21												
98	1	EA	EXPANSION JOINT	704E21												
99	1	EA	EXPANSION JOINT	704E21												
100	1	EA	EXPANSION JOINT	704E21												

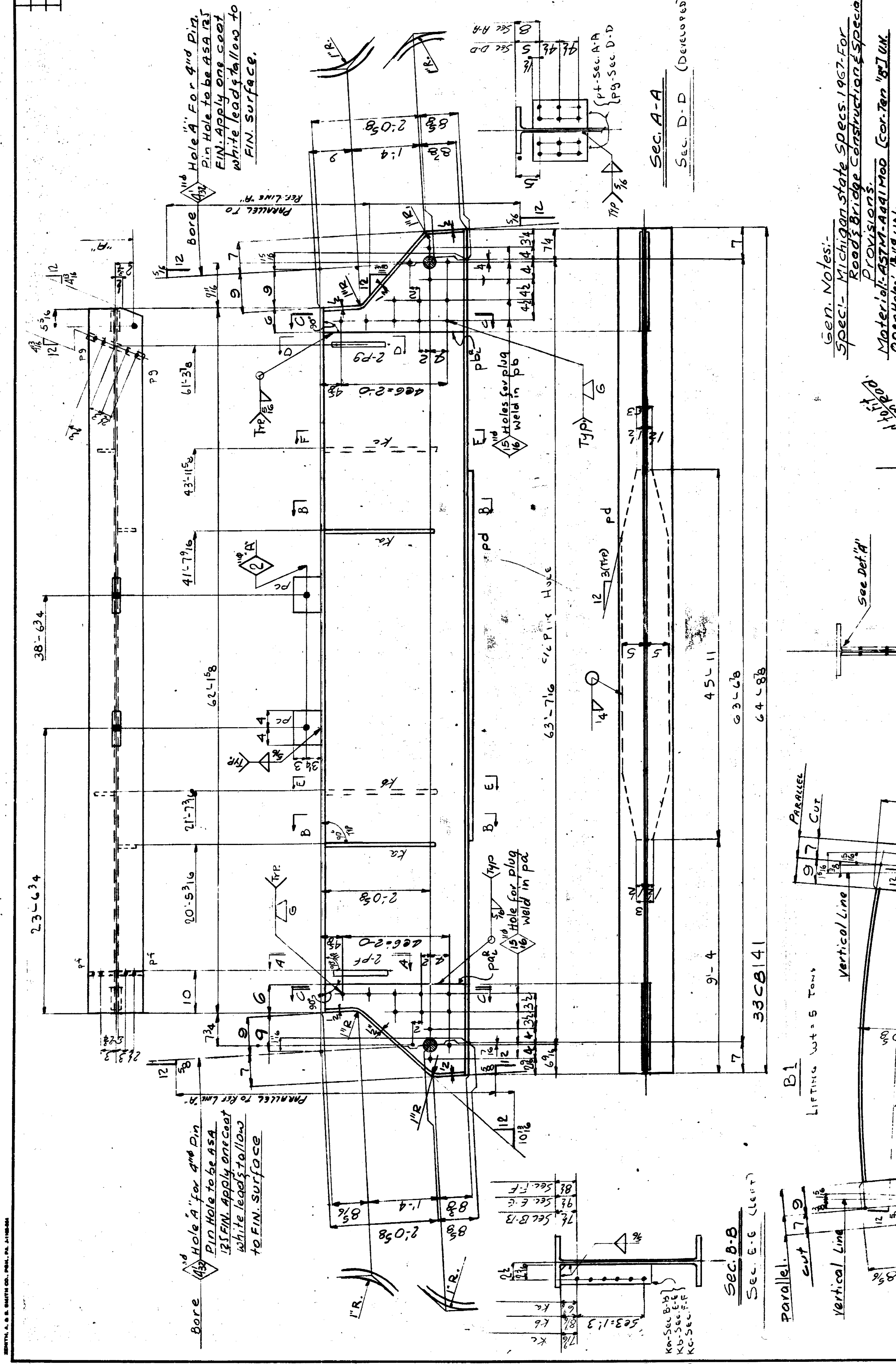


ITEM NO.	DESCRIPTION	QUANTITY	UNIT	MATERIAL	SPECIFICATION	REMARKS	DATE	DRAWN BY	CHECKED BY	CALCULATED BY	APPROVED BY	MATERIAL		WEIGHT		
												WEIGHT	VOLUME	WEIGHT	VOLUME	
1	BEAM															
2	PLATE															
3	PLATE															
4	PLATE															
5	PLATE															
6	PLATE															
7	PLATE															
8	PLATE															
9	PLATE															
10	PLATE															
11	PLATE															
12	PLATE															
13	PLATE															
14	PLATE															
15	PLATE															
16	PLATE															
17	PLATE															
18	PLATE															
19	PLATE															
20	PLATE															
21	PLATE															
22	PLATE															
23	PLATE															
24	PLATE															
25	PLATE															
26	PLATE															
27	PLATE															
28	PLATE															
29	PLATE															
30	PLATE															
31	PLATE															
32	PLATE															
33	PLATE															
34	PLATE															
35	PLATE															
36	PLATE															
37	PLATE															
38	PLATE															
39	PLATE															
40	PLATE															
41	PLATE															
42	PLATE															
43	PLATE															
44	PLATE															
45	PLATE															
46	PLATE															
47	PLATE															
48	PLATE															
49	PLATE															
50	PLATE															
51	PLATE															
52	PLATE															
53	PLATE															
54	PLATE															
55	PLATE															
56	PLATE															
57	PLATE															
58	PLATE															
59	PLATE															
60	PLATE															
61	PLATE															
62	PLATE															
63	PLATE															
64	PLATE															
65	PLATE															
66	PLATE															
67	PLATE															
68	PLATE															
69	PLATE															
70	PLATE															
71	PLATE															
72	PLATE															
73	PLATE															
74	PLATE															
75	PLATE															
76	PLATE															
77	PLATE															
78	PLATE															
79	PLATE															
80	PLATE															
81	PLATE															
82	PLATE															
83	PLATE															
84	PLATE															
85	PLATE															
86	PLATE															
87	PLATE															
88	PLATE															
89	PLATE															
90	PLATE															
91	PLATE															
92	PLATE															
93	PLATE															
94	PLATE															
95	PLATE															
96	PLATE															
97	PLATE															
98	PLATE															
99	PLATE															
100	PLATE															



Gen. Notes:-
 Spec. - Michigan State Specs. 1967 For
 Road Bridge Construction & Special
 Provisions.
 Materials - ASTM A413, A414, A415, A416, A417, A418, A419, A420, A421, A422, A423, A424, A425, A426, A427, A428, A429, A430, A431, A432, A433, A434, A435, A436, A437, A438, A439, A440, A441, A442, A443, A444, A445, A446, A447, A448, A449, A450, A451, A452, A453, A454, A455, A456, A457, A458, A459, A460, A461, A462, A463, A464, A465, A466, A467, A468, A469, A470, A471, A472, A473, A474, A475, A476, A477, A478, A479, A480, A481, A482, A483, A484, A485, A486, A487, A488, A489, A490, A491, A492, A493, A494, A495, A496, A497, A498, A499, A500, A501, A502, A503, A504, A505, A506, A507, A508, A509, A510, A511, A512, A513, A514, A515, A516, A517, A518, A519, A520, A521, A522, A523, A524, A525, A526, A527, A528, A529, A530, A531, A532, A533, A534, A535, A536, A537, A538, A539, A540, A541, A542, A543, A544, A545, A546, A547, A548, A549, A550, A551, A552, A553, A554, A555, A556, A557, A558, A559, A560, A561, A562, A563, A564, A565, A566, A567, A568, A569, A570, A571, A572, A573, A574, A575, A576, A577, A578, A579, A580, A581, A582, A583, A584, A585, A586, A587, A588, A589, A590, A591, A592, A593, A594, A595, A596, A597, A598, A599, A600, A601, A602, A603, A604, A605, A606, A607, A608, A609, A610, A611, A612, A613, A614, A615, A616, A617, A618, A619, A620, A621, A622, A623, A624, A625, A626, A627, A628, A629, A630, A631, A632, A633, A634, A635, A636, A637, A638, A639, A640, A641, A642, A643, A644, A645, A646, A647, A648, A649, A650, A651, A652, A653, A654, A655, A656, A657, A658, A659, A660, A661, A662, A663, A664, A665, A666, A667, A668, A669, A670, A671, A672, A673, A674, A675, A676, A677, A678, A679, A680, A681, A682, A683, A684, A685, A686, A687

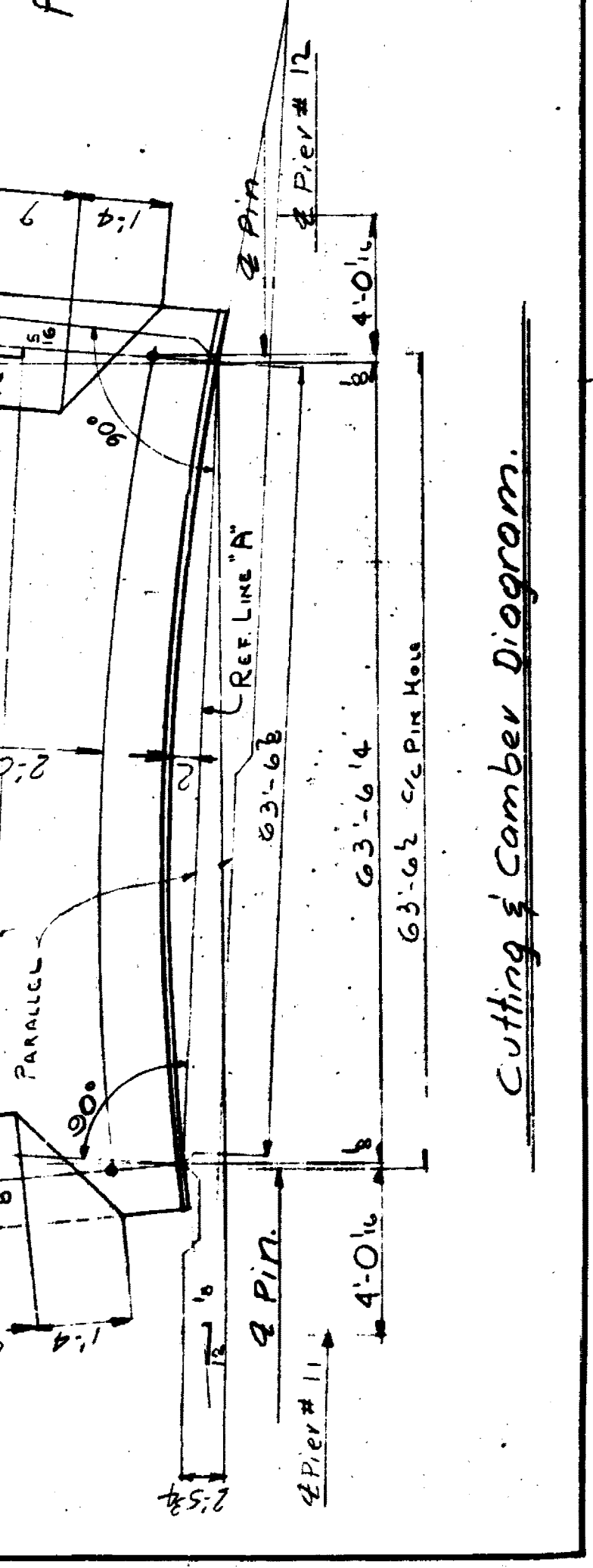
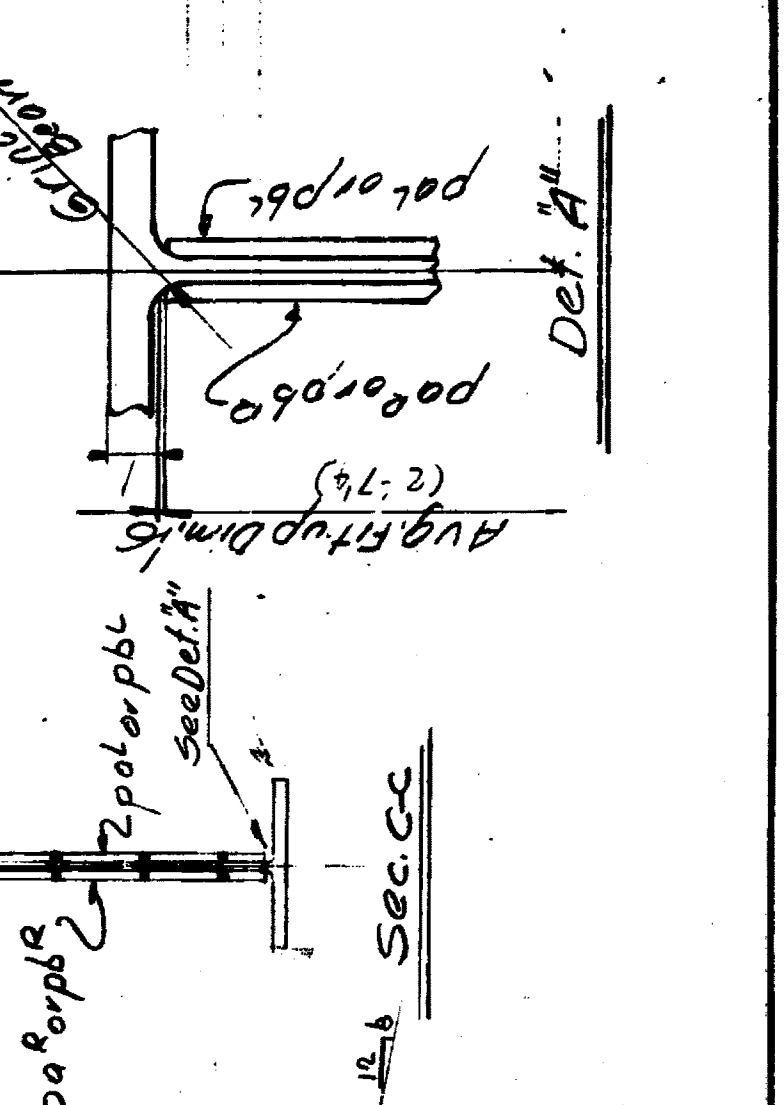
ITEM NO.	QUANTITY	UNIT	DESCRIPTION	SPECIFICATION	REMARKS	DATE	MATERIAL		CALCULATED WEIGHT FOR ONE UNIT	TOTAL WEIGHT
							TYPE	GRADE		
1	1	LB	BEAM							
2	1	LB	PLATE							
3	1	LB	PLATE							
4	1	LB	PLATE							
5	1	LB	PLATE							
6	1	LB	PLATE							
7	1	LB	PLATE							
8	1	LB	PLATE							
9	1	LB	PLATE							
10	1	LB	PLATE							
11	1	LB	PLATE							
12	1	LB	PLATE							
13	1	LB	PLATE							
14	1	LB	PLATE							
15	1	LB	PLATE							
16	1	LB	PLATE							
17	1	LB	PLATE							
18	1	LB	PLATE							
19	1	LB	PLATE							
20	1	LB	PLATE							
21	1	LB	PLATE							
22	1	LB	PLATE							
23	1	LB	PLATE							
24	1	LB	PLATE							
25	1	LB	PLATE							
26	1	LB	PLATE							
27	1	LB	PLATE							
28	1	LB	PLATE							
29	1	LB	PLATE							
30	1	LB	PLATE							
31	1	LB	PLATE							
32	1	LB	PLATE							
33	1	LB	PLATE							
34	1	LB	PLATE							
35	1	LB	PLATE							
36	1	LB	PLATE							
37	1	LB	PLATE							
38	1	LB	PLATE							
39	1	LB	PLATE							
40	1	LB	PLATE							
41	1	LB	PLATE							
42	1	LB	PLATE							
43	1	LB	PLATE							
44	1	LB	PLATE							
45	1	LB	PLATE							
46	1	LB	PLATE							
47	1	LB	PLATE							
48	1	LB	PLATE							
49	1	LB	PLATE							
50	1	LB	PLATE							
51	1	LB	PLATE							
52	1	LB	PLATE							
53	1	LB	PLATE							
54	1	LB	PLATE							
55	1	LB	PLATE							
56	1	LB	PLATE							
57	1	LB	PLATE							
58	1	LB	PLATE							
59	1	LB	PLATE							
60	1	LB	PLATE							
61	1	LB	PLATE							
62	1	LB	PLATE							
63	1	LB	PLATE							
64	1	LB	PLATE							
65	1	LB	PLATE							
66	1	LB	PLATE							
67	1	LB	PLATE							
68	1	LB	PLATE							
69	1	LB	PLATE							
70	1	LB	PLATE							
71	1	LB	PLATE							
72	1	LB	PLATE							
73	1	LB	PLATE							
74	1	LB	PLATE							
75	1	LB	PLATE							
76	1	LB	PLATE							
77	1	LB	PLATE							
78	1	LB	PLATE							
79	1	LB	PLATE							
80	1	LB	PLATE							
81	1	LB	PLATE							
82	1	LB	PLATE							
83	1	LB	PLATE							
84	1	LB	PLATE							
85	1	LB	PLATE							
86	1	LB	PLATE							
87	1	LB	PLATE							
88	1	LB	PLATE							
89	1	LB	PLATE							
90	1	LB	PLATE							
91	1	LB	PLATE							
92	1	LB	PLATE							
93	1	LB	PLATE							
94	1	LB	PLATE							
95	1	LB	PLATE							
96	1	LB	PLATE							
97	1	LB	PLATE							
98	1	LB	PLATE							
99	1	LB	PLATE							
100	1	LB	PLATE							



MICHIGAN DEPT. OF STATE HIGHWAYS
 BRIDGE NO. 101 OF 2122K
 EVERGREEN ROAD OVER I-96
 (JEFFRIES FREEWAY)
 DETROIT, (WAYNE COUNTY) MICHIGAN
 Beam 31.5' Span # 12
 American Bridge Division of United States Steel
 Manufactured under license of Gary # 2
 Made by Gary # 2
 In Charge of August # 5559
 ORDER NO. K2828
 SHEET NO. 708

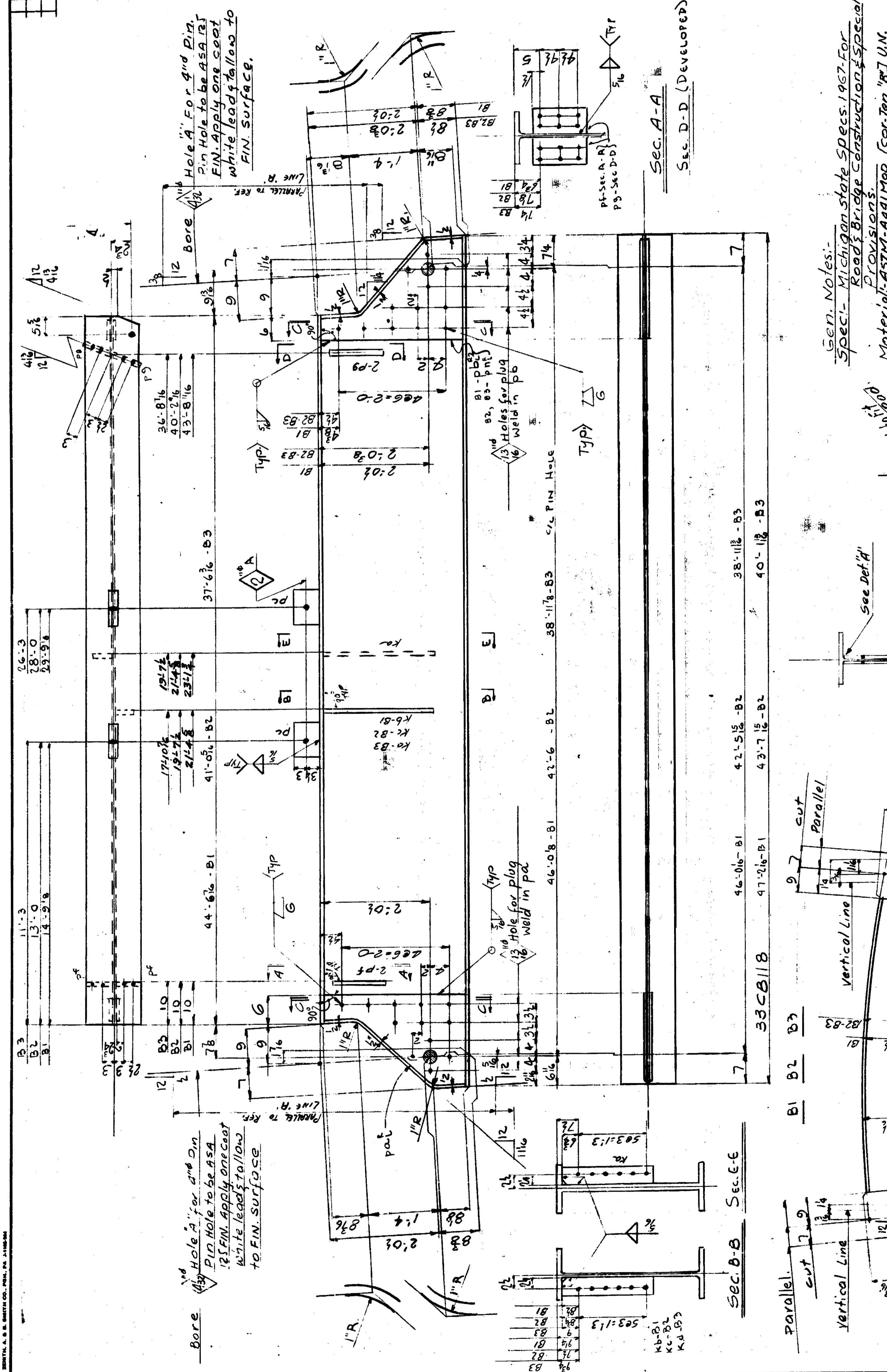
NO.	DESCRIPTION	DATE	BY	CHECKED
1	DESIGNED			
2	DRAWN			
3	CHECKED			
4	APPROVED			

Gen. Notes:
 Spec. - Michigan State Specs. 1967 For Road Bridge Construction Special Provisions.
 Material - ASTM-A41 Mod (Cor-Ten "B") Wk.
 Open Holes - 5/16" DIA.
 Welding - AWS Special Provisions
 USE EPOXY ANCHORING ELECTRODES OF F70 TENSILE STRENGTH AND ELECTRODE COMPARABLE OPEN HOLES - ARE FOR HIGH STRENGTH STRUCTURAL BOLTS U.N.C. SIZE - 1/2" DIA. TIP
 NOTE: CAMBER IS TO BE MEASURED WITH THE BRIDGE IN PLACE AND SHALL BE TO BE USED TO ADJUST THE CAMBER PERMANENTLY WITHIN THE TOLERANCES SPECIFIED.
 All work shall be checked carefully and approved by the Engineer before any concrete is placed.



Cutting & Camber Diagram.
 SHEET NO. 708
 ORDER NO. K2828

ITEM NO.	DESCRIPTION	QUANTITY	UNIT	MATERIAL	REMARKS	DATE	BY	CHECKED	APPROVED	CALCULATED	REVISION
1	Beam	1	LINEAL	33CB118							
2	Plate	2	SQ. FT.	PL 20							
3	Plate	2	SQ. FT.	PL 20							
4	Plate	2	SQ. FT.	PL 20							
5	Plate	2	SQ. FT.	PL 20							
6	Plate	2	SQ. FT.	PL 20							
7	Plate	2	SQ. FT.	PL 20							
8	Plate	2	SQ. FT.	PL 20							
9	Plate	2	SQ. FT.	PL 20							
10	Plate	2	SQ. FT.	PL 20							
11	Plate	2	SQ. FT.	PL 20							
12	Plate	2	SQ. FT.	PL 20							
13	Plate	2	SQ. FT.	PL 20							
14	Plate	2	SQ. FT.	PL 20							
15	Plate	2	SQ. FT.	PL 20							
16	Plate	2	SQ. FT.	PL 20							
17	Plate	2	SQ. FT.	PL 20							
18	Plate	2	SQ. FT.	PL 20							
19	Plate	2	SQ. FT.	PL 20							
20	Plate	2	SQ. FT.	PL 20							
21	Plate	2	SQ. FT.	PL 20							
22	Plate	2	SQ. FT.	PL 20							
23	Plate	2	SQ. FT.	PL 20							
24	Plate	2	SQ. FT.	PL 20							
25	Plate	2	SQ. FT.	PL 20							
26	Plate	2	SQ. FT.	PL 20							
27	Plate	2	SQ. FT.	PL 20							
28	Plate	2	SQ. FT.	PL 20							
29	Plate	2	SQ. FT.	PL 20							
30	Plate	2	SQ. FT.	PL 20							
31	Plate	2	SQ. FT.	PL 20							
32	Plate	2	SQ. FT.	PL 20							
33	Plate	2	SQ. FT.	PL 20							
34	Plate	2	SQ. FT.	PL 20							
35	Plate	2	SQ. FT.	PL 20							
36	Plate	2	SQ. FT.	PL 20							
37	Plate	2	SQ. FT.	PL 20							
38	Plate	2	SQ. FT.	PL 20							
39	Plate	2	SQ. FT.	PL 20							
40	Plate	2	SQ. FT.	PL 20							
41	Plate	2	SQ. FT.	PL 20							
42	Plate	2	SQ. FT.	PL 20							
43	Plate	2	SQ. FT.	PL 20							
44	Plate	2	SQ. FT.	PL 20							
45	Plate	2	SQ. FT.	PL 20							
46	Plate	2	SQ. FT.	PL 20							
47	Plate	2	SQ. FT.	PL 20							
48	Plate	2	SQ. FT.	PL 20							
49	Plate	2	SQ. FT.	PL 20							
50	Plate	2	SQ. FT.	PL 20							
51	Plate	2	SQ. FT.	PL 20							
52	Plate	2	SQ. FT.	PL 20							
53	Plate	2	SQ. FT.	PL 20							
54	Plate	2	SQ. FT.	PL 20							
55	Plate	2	SQ. FT.	PL 20							
56	Plate	2	SQ. FT.	PL 20							
57	Plate	2	SQ. FT.	PL 20							
58	Plate	2	SQ. FT.	PL 20							
59	Plate	2	SQ. FT.	PL 20							
60	Plate	2	SQ. FT.	PL 20							
61	Plate	2	SQ. FT.	PL 20							
62	Plate	2	SQ. FT.	PL 20							
63	Plate	2	SQ. FT.	PL 20							
64	Plate	2	SQ. FT.	PL 20							
65	Plate	2	SQ. FT.	PL 20							
66	Plate	2	SQ. FT.	PL 20							
67	Plate	2	SQ. FT.	PL 20							
68	Plate	2	SQ. FT.	PL 20							
69	Plate	2	SQ. FT.	PL 20							
70	Plate	2	SQ. FT.	PL 20							
71	Plate	2	SQ. FT.	PL 20							
72	Plate	2	SQ. FT.	PL 20							
73	Plate	2	SQ. FT.	PL 20							
74	Plate	2	SQ. FT.	PL 20							
75	Plate	2	SQ. FT.	PL 20							
76	Plate	2	SQ. FT.	PL 20							
77	Plate	2	SQ. FT.	PL 20							
78	Plate	2	SQ. FT.	PL 20							
79	Plate	2	SQ. FT.	PL 20							
80	Plate	2	SQ. FT.	PL 20							
81	Plate	2	SQ. FT.	PL 20							
82	Plate	2	SQ. FT.	PL 20							
83	Plate	2	SQ. FT.	PL 20							
84	Plate	2	SQ. FT.	PL 20							
85	Plate	2	SQ. FT.	PL 20							
86	Plate	2	SQ. FT.	PL 20							
87	Plate	2	SQ. FT.	PL 20							
88	Plate	2	SQ. FT.	PL 20							
89	Plate	2	SQ. FT.	PL 20							
90	Plate	2	SQ. FT.	PL 20							
91	Plate	2	SQ. FT.	PL 20							
92	Plate	2	SQ. FT.	PL 20							
93	Plate	2	SQ. FT.	PL 20							
94	Plate	2	SQ. FT.	PL 20							
95	Plate	2	SQ. FT.	PL 20							
96	Plate	2	SQ. FT.	PL 20							
97	Plate	2	SQ. FT.	PL 20							
98	Plate	2	SQ. FT.	PL 20							
99	Plate	2	SQ. FT.	PL 20							
100	Plate	2	SQ. FT.	PL 20							



MICHIGAN DEPT. OF STATE HIGHWAYS
 BRIDGE NO. 101
 EVERGREEN ROAD OVER R.R.
 (JEFFRIES PRESENTLY)
 DETROIT, (WAYNE COUNTY) MICHIGAN

Beam # 12
 Span # 12
 American Bridge Co. United States Steel
 Division of

MANUFACTURED BY: Gary
 ORDER NO.: Gary # 2
 MADE BY: Gary # 2
 DATE: 1/16/26
 CHECKED BY: A.L.K. # 344
 IN CHARGE OF: Augustin # 555

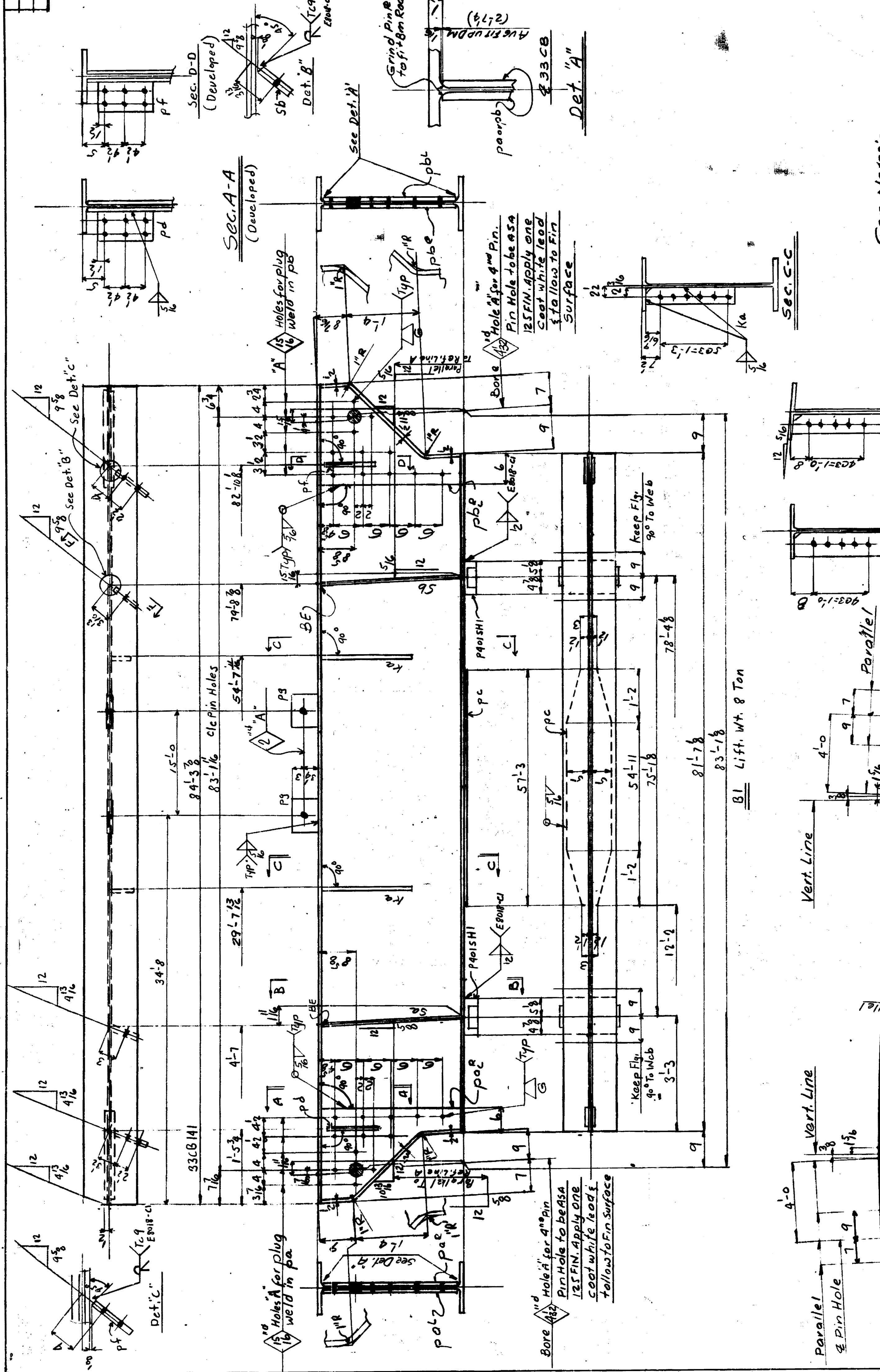
SHEET NO. 711
 K2828

Gen. Notes:
 Spec. - Michigan State Specs. 1927 For
 Road Bridge Construction & Special
 Provisions
 Material - ASTM-A41400 (Cor-Ten) 8" I.M.
 Open Holes - 12" Dia.
 Welding - AWS Special Provisions - Use E10XX L.H. Electrodes on
 F100XXX OR F100XXX Flux Electrode Combination
 Points - 100%
 SNIP - 1/2" TYP.
 Camber: Camber is to be measured with
 the beam lying on its side. Allowable
 Camber to Balance 1st Heat is to be
 used if necessary to assure
 camber permanency.
 Open Holes are for High Strength
 Bolts U.M.A.

All steel shall be handled carefully and
 shall be kept free and clean of all foreign
 materials such as grease, oil, chalk marks,
 etc.
 All shipping marks shall be made using a
 steel die.
 The rounding of corners will not be re-
 quired.

Cutting & Camber Diagram.

ITEM NO.	DESCRIPTION	QUANTITY	UNIT	REMARKS
1	1 CB 33 1/2	1	EA	
2	2 PL 20 1/2	2	EA	
3	2 PL 10 1/2	2	EA	
4	2 M 1/2	2	EA	
5	1 FWT 1/2	1	EA	
6	1 FWT 1/2	1	EA	
7	1 FWT 1/2	1	EA	
8	1 FWT 1/2	1	EA	
9	1 FWT 1/2	1	EA	
10	1 FWT 1/2	1	EA	
11	1 FWT 1/2	1	EA	
12	1 FWT 1/2	1	EA	
13	1 FWT 1/2	1	EA	
14	1 FWT 1/2	1	EA	
15	1 FWT 1/2	1	EA	
16	1 FWT 1/2	1	EA	
17	1 FWT 1/2	1	EA	
18	1 FWT 1/2	1	EA	
19	1 FWT 1/2	1	EA	
20	1 FWT 1/2	1	EA	
21	1 FWT 1/2	1	EA	
22	1 FWT 1/2	1	EA	
23	1 FWT 1/2	1	EA	
24	1 FWT 1/2	1	EA	
25	1 FWT 1/2	1	EA	
26	1 FWT 1/2	1	EA	
27	1 FWT 1/2	1	EA	
28	1 FWT 1/2	1	EA	
29	1 FWT 1/2	1	EA	
30	1 FWT 1/2	1	EA	
31	1 FWT 1/2	1	EA	
32	1 FWT 1/2	1	EA	
33	1 FWT 1/2	1	EA	
34	1 FWT 1/2	1	EA	
35	1 FWT 1/2	1	EA	
36	1 FWT 1/2	1	EA	
37	1 FWT 1/2	1	EA	
38	1 FWT 1/2	1	EA	
39	1 FWT 1/2	1	EA	
40	1 FWT 1/2	1	EA	
41	1 FWT 1/2	1	EA	
42	1 FWT 1/2	1	EA	
43	1 FWT 1/2	1	EA	
44	1 FWT 1/2	1	EA	
45	1 FWT 1/2	1	EA	
46	1 FWT 1/2	1	EA	
47	1 FWT 1/2	1	EA	
48	1 FWT 1/2	1	EA	
49	1 FWT 1/2	1	EA	
50	1 FWT 1/2	1	EA	
51	1 FWT 1/2	1	EA	
52	1 FWT 1/2	1	EA	
53	1 FWT 1/2	1	EA	
54	1 FWT 1/2	1	EA	
55	1 FWT 1/2	1	EA	
56	1 FWT 1/2	1	EA	
57	1 FWT 1/2	1	EA	
58	1 FWT 1/2	1	EA	
59	1 FWT 1/2	1	EA	
60	1 FWT 1/2	1	EA	
61	1 FWT 1/2	1	EA	
62	1 FWT 1/2	1	EA	
63	1 FWT 1/2	1	EA	
64	1 FWT 1/2	1	EA	
65	1 FWT 1/2	1	EA	
66	1 FWT 1/2	1	EA	
67	1 FWT 1/2	1	EA	
68	1 FWT 1/2	1	EA	
69	1 FWT 1/2	1	EA	
70	1 FWT 1/2	1	EA	
71	1 FWT 1/2	1	EA	
72	1 FWT 1/2	1	EA	
73	1 FWT 1/2	1	EA	
74	1 FWT 1/2	1	EA	
75	1 FWT 1/2	1	EA	
76	1 FWT 1/2	1	EA	
77	1 FWT 1/2	1	EA	
78	1 FWT 1/2	1	EA	
79	1 FWT 1/2	1	EA	
80	1 FWT 1/2	1	EA	
81	1 FWT 1/2	1	EA	
82	1 FWT 1/2	1	EA	
83	1 FWT 1/2	1	EA	
84	1 FWT 1/2	1	EA	
85	1 FWT 1/2	1	EA	
86	1 FWT 1/2	1	EA	
87	1 FWT 1/2	1	EA	
88	1 FWT 1/2	1	EA	
89	1 FWT 1/2	1	EA	
90	1 FWT 1/2	1	EA	
91	1 FWT 1/2	1	EA	
92	1 FWT 1/2	1	EA	
93	1 FWT 1/2	1	EA	
94	1 FWT 1/2	1	EA	
95	1 FWT 1/2	1	EA	
96	1 FWT 1/2	1	EA	
97	1 FWT 1/2	1	EA	
98	1 FWT 1/2	1	EA	
99	1 FWT 1/2	1	EA	
100	1 FWT 1/2	1	EA	



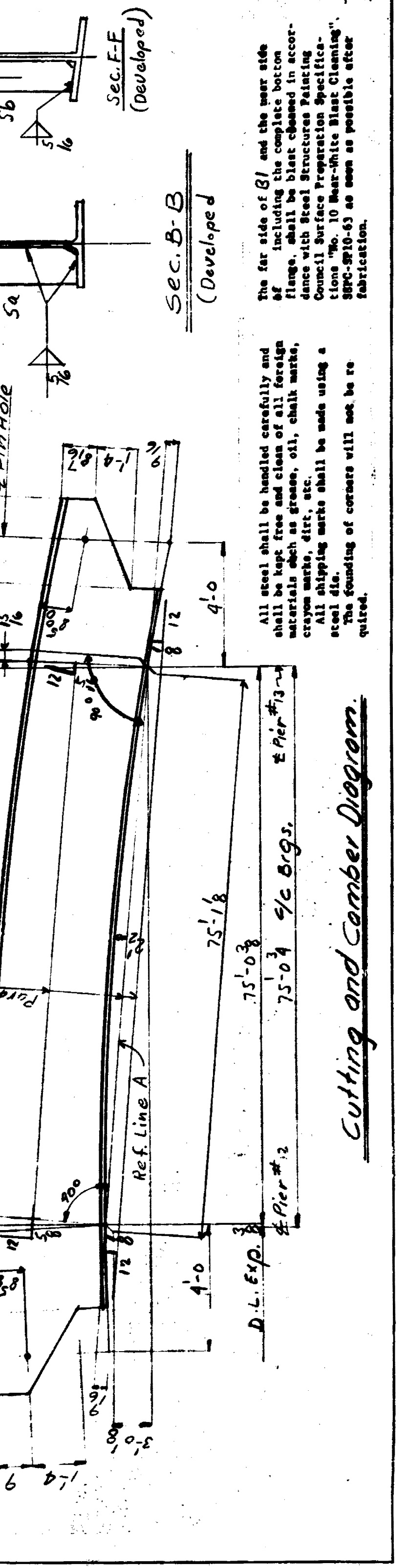
MICHIGAN DEPT. OF STATE HIGHWAYS
 BRIDGE NO. 101 OF 2012K
 EVERGREEN ROAD OVER I-96
 (JEFFERSON FREEMAN) MICHIGAN
 DETROIT, (WAYNE COUNTY)

Beam A e span #13
 American Bridge Division of USS United States Steel
 Manufactured at Gary, Ind.
 Material - A572-44 Mod. (Content 8") U.N.
 Open Holes: 13" U.N.
 Welding: AWS E70XX Low Hydrogen Electrodes or E70XX or E70XX-XX Flux and Electrodes Combinations U.N.
 Paint: NO

Gen. Notes:-
 Spec. Michigan State Spec. 1967 for Road & Bridge Construction Special Provisions
 Material - A572-44 Mod. (Content 8") U.N.
 Open Holes: 13" U.N.
 Welding: AWS E70XX Low Hydrogen Electrodes or E70XX or E70XX-XX Flux and Electrodes Combinations U.N.
 Paint: NO

CAMBER NOTE: CAMBER IS TO BE MEASURED WITH THE BEAM LYING ON ITS SIDE. ALLOWABLE CAMBER TOLERANCE IS 1/4". HEAT IS TO BE USED, IF NECESSARY, TO ASSURE CAMBER PERMANENCY WITHIN THE ABOVE TOLERANCE.

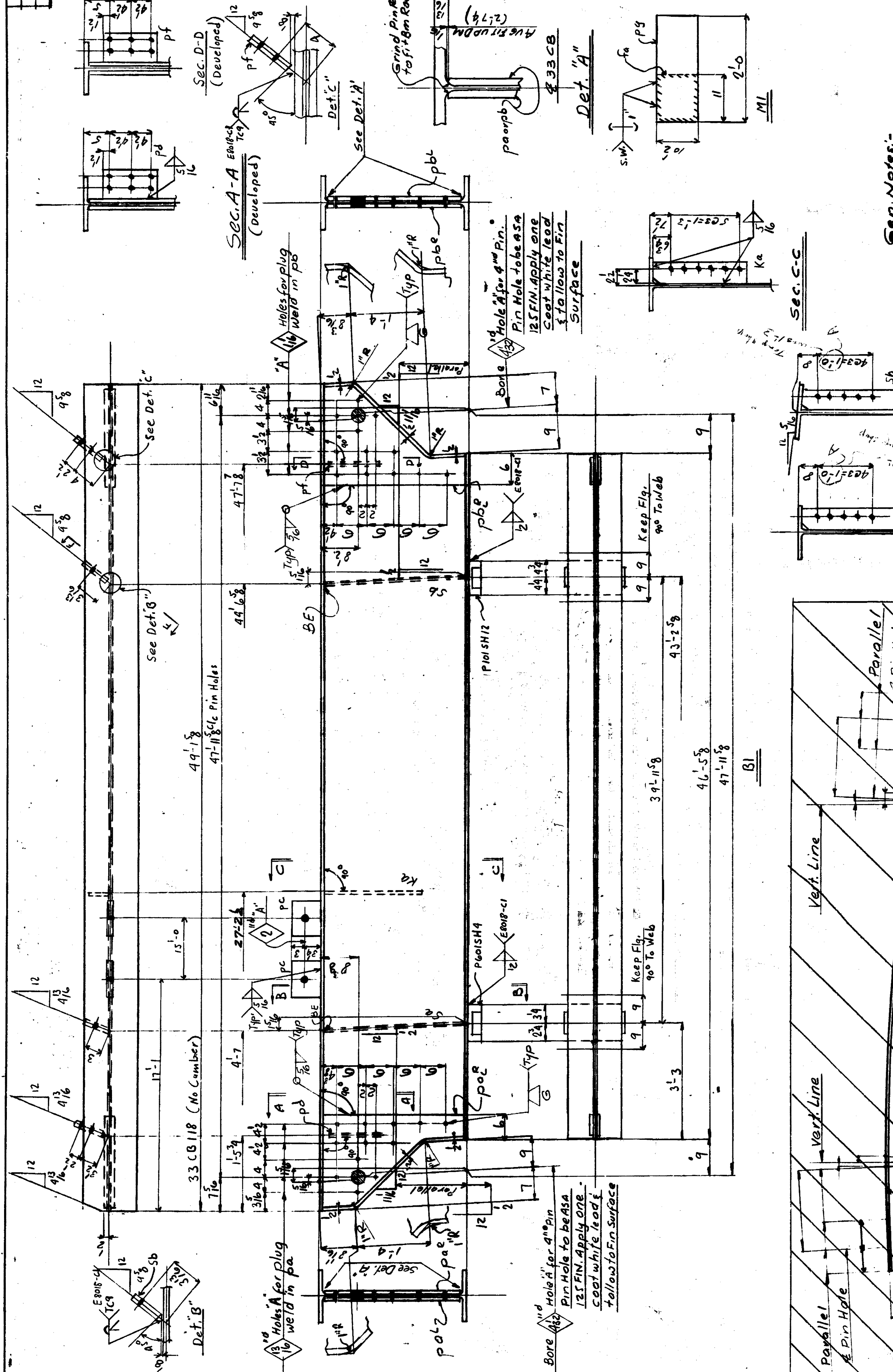
Open Holes are for High Strength Structural Bolts U.N. #8. B.E. Denotes Bearing End Clip Stiff. Bolt.



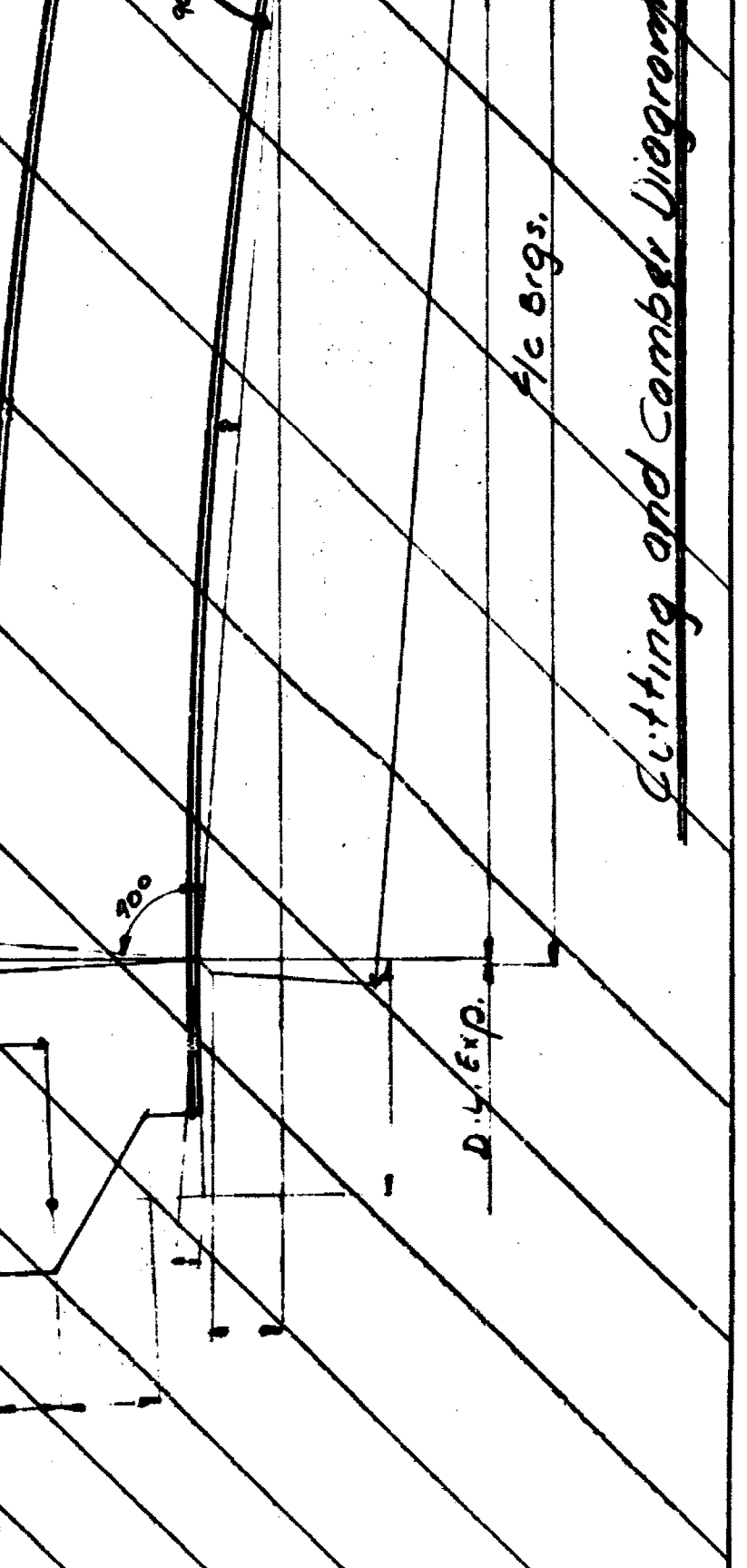
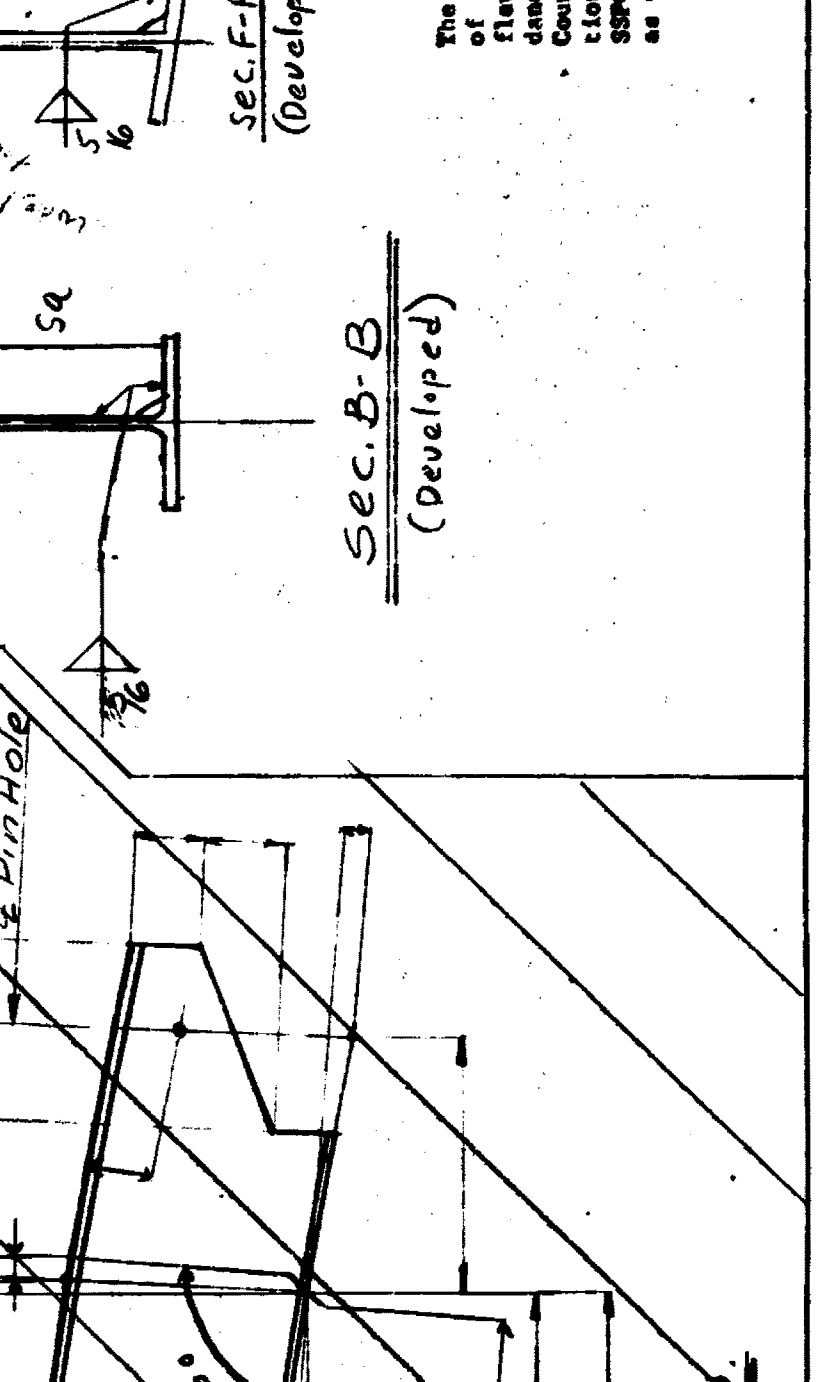
Cutting and Camber Diagram

K 2828 712

NO.	DESCRIPTION	QUANTITY	UNIT	WEIGHT	MARK	DATE	BY	CHECKED
1	1 CB 33	1	LB	49.1				
2	2 PL 1/2 x 12	2	LB	2.7				
3	2 PL 1/2 x 12	2	LB	2.7				
4	1 M Top Shbr	1	LB					
5	1 M Top Shbr	1	LB					
6	2 FGT 1/2 x 12	2	LB					
7	1 FGT 1/2 x 12	1	LB					
8	1 FGT 1/2 x 12	1	LB					
9	1 FGT 1/2 x 12	1	LB					
10	1 FGT 1/2 x 12	1	LB					
11	1 FGT 1/2 x 12	1	LB					
12	1 FGT 1/2 x 12	1	LB					
13	1 FGT 1/2 x 12	1	LB					
14	1 FGT 1/2 x 12	1	LB					
15	1 FGT 1/2 x 12	1	LB					
16	1 FGT 1/2 x 12	1	LB					
17	1 FGT 1/2 x 12	1	LB					
18	1 FGT 1/2 x 12	1	LB					
19	1 FGT 1/2 x 12	1	LB					
20	1 FGT 1/2 x 12	1	LB					
21	1 FGT 1/2 x 12	1	LB					
22	1 FGT 1/2 x 12	1	LB					
23	1 FGT 1/2 x 12	1	LB					
24	1 FGT 1/2 x 12	1	LB					
25	1 FGT 1/2 x 12	1	LB					
26	1 FGT 1/2 x 12	1	LB					
27	1 FGT 1/2 x 12	1	LB					
28	1 FGT 1/2 x 12	1	LB					
29	1 FGT 1/2 x 12	1	LB					
30	1 FGT 1/2 x 12	1	LB					
31	1 FGT 1/2 x 12	1	LB					
32	1 FGT 1/2 x 12	1	LB					
33	1 FGT 1/2 x 12	1	LB					
34	1 FGT 1/2 x 12	1	LB					
35	1 FGT 1/2 x 12	1	LB					
36	1 FGT 1/2 x 12	1	LB					
37	1 FGT 1/2 x 12	1	LB					
38	1 FGT 1/2 x 12	1	LB					
39	1 FGT 1/2 x 12	1	LB					
40	1 FGT 1/2 x 12	1	LB					
41	1 FGT 1/2 x 12	1	LB					
42	1 FGT 1/2 x 12	1	LB					
43	1 FGT 1/2 x 12	1	LB					
44	1 FGT 1/2 x 12	1	LB					
45	1 FGT 1/2 x 12	1	LB					
46	1 FGT 1/2 x 12	1	LB					
47	1 FGT 1/2 x 12	1	LB					
48	1 FGT 1/2 x 12	1	LB					
49	1 FGT 1/2 x 12	1	LB					
50	1 FGT 1/2 x 12	1	LB					
51	1 FGT 1/2 x 12	1	LB					
52	1 FGT 1/2 x 12	1	LB					
53	1 FGT 1/2 x 12	1	LB					
54	1 FGT 1/2 x 12	1	LB					
55	1 FGT 1/2 x 12	1	LB					
56	1 FGT 1/2 x 12	1	LB					
57	1 FGT 1/2 x 12	1	LB					
58	1 FGT 1/2 x 12	1	LB					
59	1 FGT 1/2 x 12	1	LB					
60	1 FGT 1/2 x 12	1	LB					
61	1 FGT 1/2 x 12	1	LB					
62	1 FGT 1/2 x 12	1	LB					
63	1 FGT 1/2 x 12	1	LB					
64	1 FGT 1/2 x 12	1	LB					
65	1 FGT 1/2 x 12	1	LB					
66	1 FGT 1/2 x 12	1	LB					
67	1 FGT 1/2 x 12	1	LB					
68	1 FGT 1/2 x 12	1	LB					
69	1 FGT 1/2 x 12	1	LB					
70	1 FGT 1/2 x 12	1	LB					
71	1 FGT 1/2 x 12	1	LB					
72	1 FGT 1/2 x 12	1	LB					
73	1 FGT 1/2 x 12	1	LB					
74	1 FGT 1/2 x 12	1	LB					
75	1 FGT 1/2 x 12	1	LB					
76	1 FGT 1/2 x 12	1	LB					
77	1 FGT 1/2 x 12	1	LB					
78	1 FGT 1/2 x 12	1	LB					
79	1 FGT 1/2 x 12	1	LB					
80	1 FGT 1/2 x 12	1	LB					
81	1 FGT 1/2 x 12	1	LB					
82	1 FGT 1/2 x 12	1	LB					
83	1 FGT 1/2 x 12	1	LB					
84	1 FGT 1/2 x 12	1	LB					
85	1 FGT 1/2 x 12	1	LB					
86	1 FGT 1/2 x 12	1	LB					
87	1 FGT 1/2 x 12	1	LB					
88	1 FGT 1/2 x 12	1	LB					
89	1 FGT 1/2 x 12	1	LB					
90	1 FGT 1/2 x 12	1	LB					
91	1 FGT 1/2 x 12	1	LB					
92	1 FGT 1/2 x 12	1	LB					
93	1 FGT 1/2 x 12	1	LB					
94	1 FGT 1/2 x 12	1	LB					
95	1 FGT 1/2 x 12	1	LB					
96	1 FGT 1/2 x 12	1	LB					
97	1 FGT 1/2 x 12	1	LB					
98	1 FGT 1/2 x 12	1	LB					
99	1 FGT 1/2 x 12	1	LB					
100	1 FGT 1/2 x 12	1	LB					



Gen. Notes:
 Spec. Michigan State Specs. 1967. For Road & Bridge Construction Special Provisions Material - ASTM - A441 Mod. (Carbon S) U.N.
 Open Holes - 3" U.N.
 Welding - AWS Special Provisions
 Paint - NO FIRE-RESISTANT COATINGS U.N.
 All steel shall be handled carefully and shall be kept free and clean of all foreign material such as grease, oil, dirt, marks, etc. All shipping marks shall be made using a steel die.
 The rounding of corners will not be required.



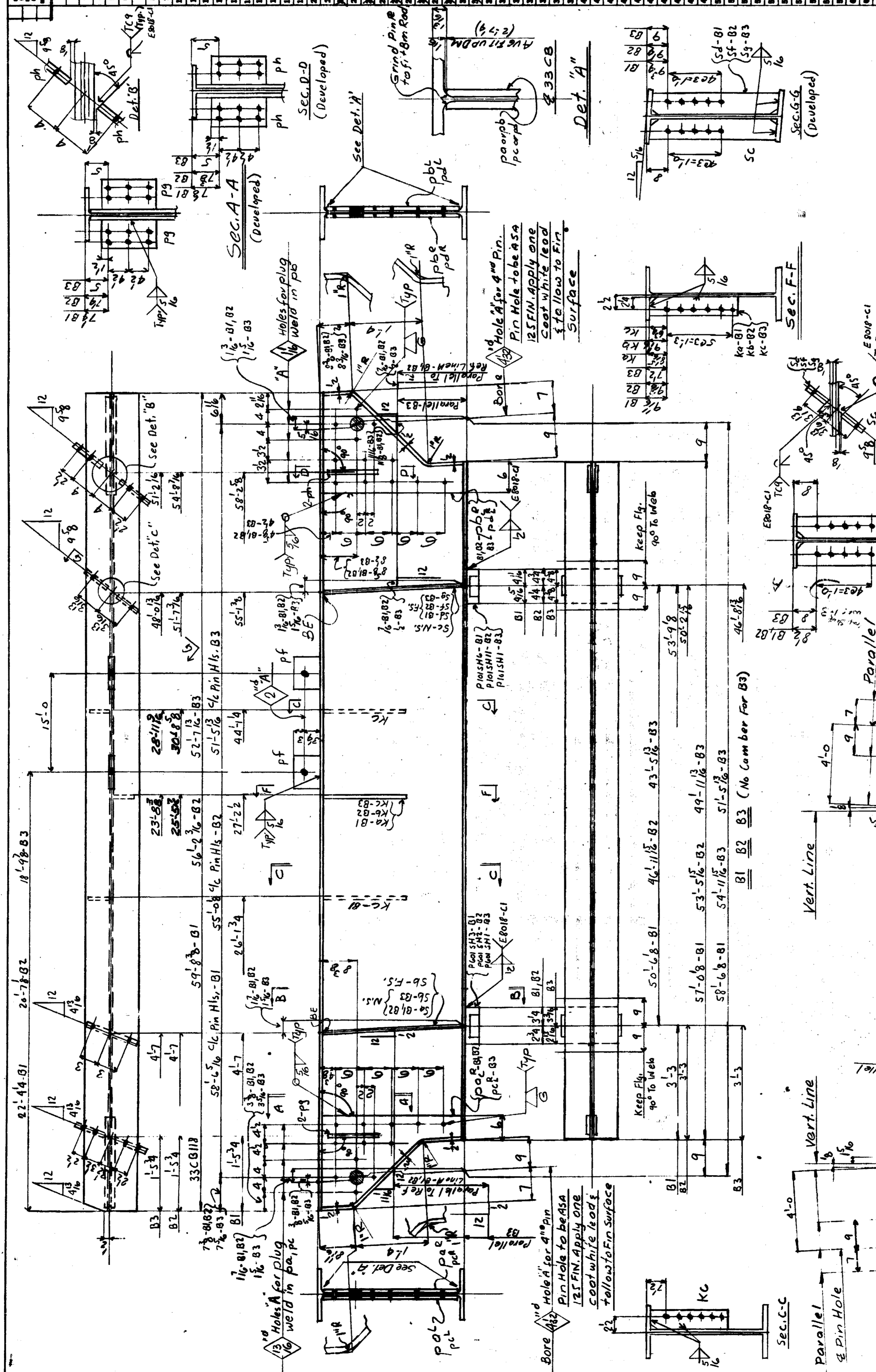
Open Holes for High Strength Structural Bolts U.N. A. 6.F. Penoles Bearing End

MICHIGAN DEPT. OF STATE HIGHWAYS
 BRIDGE NO. OF 8012K
 EVERGREEN ROAD OVER I-98
 (JEFFRIES FREEWAY)
 DETROIT, (WAYNE COUNTY) MICHIGAN

Beam 1 e span #13
 American Bridge Division of **USS** United States Steel
 Prepared by Gary
 Checked by Gary
 Date of Issue 8-1-67
 Scale 1/4" = 1'-0"

K2828
 7/3

NO.	DESCRIPTION	QTY.	UNIT	REMARKS
1	BEAM	717.81	60'	
2	BEAM	717.82	56'	
3	BEAM	717.83	53'	
4	CB	33.118	59 3/4"	
5	CB	33.118	56 1/2"	
6	CB	33.118	52 1/2"	
7	PL	82 1/2"	2 1/4"	
8	PL	82 1/2"	2 1/4"	
9	PL	82 1/2"	2 1/4"	
10	PL	82 1/2"	2 1/4"	
11	PL	82 1/2"	2 1/4"	
12	PL	82 1/2"	2 1/4"	
13	PL	82 1/2"	2 1/4"	
14	PL	82 1/2"	2 1/4"	
15	PL	82 1/2"	2 1/4"	
16	PL	82 1/2"	2 1/4"	
17	PL	82 1/2"	2 1/4"	
18	PL	82 1/2"	2 1/4"	
19	PL	82 1/2"	2 1/4"	
20	PL	82 1/2"	2 1/4"	
21	PL	82 1/2"	2 1/4"	
22	PL	82 1/2"	2 1/4"	
23	PL	82 1/2"	2 1/4"	
24	PL	82 1/2"	2 1/4"	
25	PL	82 1/2"	2 1/4"	
26	PL	82 1/2"	2 1/4"	
27	PL	82 1/2"	2 1/4"	
28	PL	82 1/2"	2 1/4"	
29	PL	82 1/2"	2 1/4"	
30	PL	82 1/2"	2 1/4"	
31	PL	82 1/2"	2 1/4"	
32	PL	82 1/2"	2 1/4"	
33	PL	82 1/2"	2 1/4"	
34	PL	82 1/2"	2 1/4"	
35	PL	82 1/2"	2 1/4"	
36	PL	82 1/2"	2 1/4"	
37	PL	82 1/2"	2 1/4"	
38	PL	82 1/2"	2 1/4"	
39	PL	82 1/2"	2 1/4"	
40	PL	82 1/2"	2 1/4"	
41	PL	82 1/2"	2 1/4"	
42	PL	82 1/2"	2 1/4"	
43	PL	82 1/2"	2 1/4"	
44	PL	82 1/2"	2 1/4"	
45	PL	82 1/2"	2 1/4"	
46	PL	82 1/2"	2 1/4"	
47	PL	82 1/2"	2 1/4"	
48	PL	82 1/2"	2 1/4"	
49	PL	82 1/2"	2 1/4"	
50	PL	82 1/2"	2 1/4"	
51	PL	82 1/2"	2 1/4"	
52	PL	82 1/2"	2 1/4"	
53	PL	82 1/2"	2 1/4"	
54	PL	82 1/2"	2 1/4"	
55	PL	82 1/2"	2 1/4"	
56	PL	82 1/2"	2 1/4"	
57	PL	82 1/2"	2 1/4"	
58	PL	82 1/2"	2 1/4"	
59	PL	82 1/2"	2 1/4"	
60	PL	82 1/2"	2 1/4"	
61	PL	82 1/2"	2 1/4"	
62	PL	82 1/2"	2 1/4"	
63	PL	82 1/2"	2 1/4"	
64	PL	82 1/2"	2 1/4"	
65	PL	82 1/2"	2 1/4"	
66	PL	82 1/2"	2 1/4"	
67	PL	82 1/2"	2 1/4"	
68	PL	82 1/2"	2 1/4"	
69	PL	82 1/2"	2 1/4"	
70	PL	82 1/2"	2 1/4"	
71	PL	82 1/2"	2 1/4"	
72	PL	82 1/2"	2 1/4"	
73	PL	82 1/2"	2 1/4"	
74	PL	82 1/2"	2 1/4"	
75	PL	82 1/2"	2 1/4"	
76	PL	82 1/2"	2 1/4"	
77	PL	82 1/2"	2 1/4"	
78	PL	82 1/2"	2 1/4"	
79	PL	82 1/2"	2 1/4"	
80	PL	82 1/2"	2 1/4"	
81	PL	82 1/2"	2 1/4"	
82	PL	82 1/2"	2 1/4"	
83	PL	82 1/2"	2 1/4"	
84	PL	82 1/2"	2 1/4"	
85	PL	82 1/2"	2 1/4"	
86	PL	82 1/2"	2 1/4"	
87	PL	82 1/2"	2 1/4"	
88	PL	82 1/2"	2 1/4"	
89	PL	82 1/2"	2 1/4"	
90	PL	82 1/2"	2 1/4"	
91	PL	82 1/2"	2 1/4"	
92	PL	82 1/2"	2 1/4"	
93	PL	82 1/2"	2 1/4"	
94	PL	82 1/2"	2 1/4"	
95	PL	82 1/2"	2 1/4"	
96	PL	82 1/2"	2 1/4"	
97	PL	82 1/2"	2 1/4"	
98	PL	82 1/2"	2 1/4"	
99	PL	82 1/2"	2 1/4"	
100	PL	82 1/2"	2 1/4"	



MICHIGAN DEPT. OF STATE HIGHWAYS
 BRIDGE NO. OF 8022A
 EVERGREEN ROAD OVER I-96
 (JEFFRIES FREEWAY)
 DETROIT, (WAYNE COUNTY) MICHIGAN

Beams & Spans 13
 Line H, J, K
 United States Steel

AMERICAN BRIDGE DIVISION
 Gary, Ind.

CONTRACT NO. 2-13-67
 DRAWING NO. **2-13-67-111**

DATE: 10/23/67

BY: [Signature]

CHECKED: [Signature]

APPROVED: [Signature]

SCALE: AS SHOWN

PROJECT NO. 2-13-67

SECTION: E9

NO. 717

K 2828

Open Holes are for High Strength Structural Bolts U.N. 1/4" B.F. Denotes Bearing End Clip Stiff. Bolt

All steel shall be welded according to specifications and materials such as gases, oil, chalk marks, crayon marks, dirt, etc. All shipping marks shall be made using a steel die. The remaining of course will not be re-cut.

