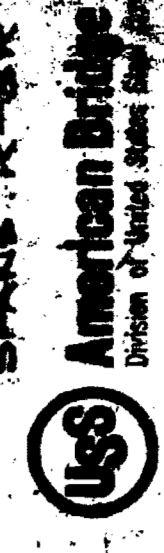


MICHIGAN DEPT. OF STATE HIGHWAYS
 BRIDGE NO. 10
 EVERGREEN ROAD OVER I-75
 (AFFRAYS FREEWAY)
 DETROIT, (WAYNE COUNTY) MICHIGAN



1	
2	
3	
4	
5	
6	
7	
8	
9	
10	

K2828 | E10

D-100 REV. 8-58

ITEM NO.	QTY	DIM.	MATERIAL		LENGTH (FEET)	WEIGHT (LBS.)	MARKS	SPECIFICATIONS OR REFERENCES	REMARKS	ORDER NO.	DATE
			DESCRIPTION	GRADE							
1	1	12" x 12" x 1/2"	PL	A36	2.0	24.0					
2	1	12" x 12" x 1/2"	PL	A36	2.0	24.0					
3	1	12" x 12" x 1/2"	PL	A36	2.0	24.0					
4	1	12" x 12" x 1/2"	PL	A36	2.0	24.0					
5	1	12" x 12" x 1/2"	PL	A36	2.0	24.0					
6	1	12" x 12" x 1/2"	PL	A36	2.0	24.0					
7	1	12" x 12" x 1/2"	PL	A36	2.0	24.0					
8	1	12" x 12" x 1/2"	PL	A36	2.0	24.0					
9	1	12" x 12" x 1/2"	PL	A36	2.0	24.0					
10	1	12" x 12" x 1/2"	PL	A36	2.0	24.0					
11	1	12" x 12" x 1/2"	PL	A36	2.0	24.0					
12	1	12" x 12" x 1/2"	PL	A36	2.0	24.0					
13	1	12" x 12" x 1/2"	PL	A36	2.0	24.0					
14	1	12" x 12" x 1/2"	PL	A36	2.0	24.0					
15	1	12" x 12" x 1/2"	PL	A36	2.0	24.0					
16	1	12" x 12" x 1/2"	PL	A36	2.0	24.0					
17	1	12" x 12" x 1/2"	PL	A36	2.0	24.0					
18	1	12" x 12" x 1/2"	PL	A36	2.0	24.0					
19	1	12" x 12" x 1/2"	PL	A36	2.0	24.0					
20	1	12" x 12" x 1/2"	PL	A36	2.0	24.0					
21	1	12" x 12" x 1/2"	PL	A36	2.0	24.0					
22	1	12" x 12" x 1/2"	PL	A36	2.0	24.0					
23	1	12" x 12" x 1/2"	PL	A36	2.0	24.0					
24	1	12" x 12" x 1/2"	PL	A36	2.0	24.0					
25	1	12" x 12" x 1/2"	PL	A36	2.0	24.0					
26	1	12" x 12" x 1/2"	PL	A36	2.0	24.0					
27	1	12" x 12" x 1/2"	PL	A36	2.0	24.0					
28	1	12" x 12" x 1/2"	PL	A36	2.0	24.0					
29	1	12" x 12" x 1/2"	PL	A36	2.0	24.0					
30	1	12" x 12" x 1/2"	PL	A36	2.0	24.0					
31	1	12" x 12" x 1/2"	PL	A36	2.0	24.0					
32	1	12" x 12" x 1/2"	PL	A36	2.0	24.0					
33	1	12" x 12" x 1/2"	PL	A36	2.0	24.0					
34	1	12" x 12" x 1/2"	PL	A36	2.0	24.0					
35	1	12" x 12" x 1/2"	PL	A36	2.0	24.0					
36	1	12" x 12" x 1/2"	PL	A36	2.0	24.0					
37	1	12" x 12" x 1/2"	PL	A36	2.0	24.0					
38	1	12" x 12" x 1/2"	PL	A36	2.0	24.0					
39	1	12" x 12" x 1/2"	PL	A36	2.0	24.0					
40	1	12" x 12" x 1/2"	PL	A36	2.0	24.0					
41	1	12" x 12" x 1/2"	PL	A36	2.0	24.0					
42	1	12" x 12" x 1/2"	PL	A36	2.0	24.0					
43	1	12" x 12" x 1/2"	PL	A36	2.0	24.0					
44	1	12" x 12" x 1/2"	PL	A36	2.0	24.0					
45	1	12" x 12" x 1/2"	PL	A36	2.0	24.0					
46	1	12" x 12" x 1/2"	PL	A36	2.0	24.0					
47	1	12" x 12" x 1/2"	PL	A36	2.0	24.0					
48	1	12" x 12" x 1/2"	PL	A36	2.0	24.0					
49	1	12" x 12" x 1/2"	PL	A36	2.0	24.0					
50	1	12" x 12" x 1/2"	PL	A36	2.0	24.0					
51	1	12" x 12" x 1/2"	PL	A36	2.0	24.0					
52	1	12" x 12" x 1/2"	PL	A36	2.0	24.0					
53	1	12" x 12" x 1/2"	PL	A36	2.0	24.0					
54	1	12" x 12" x 1/2"	PL	A36	2.0	24.0					
55	1	12" x 12" x 1/2"	PL	A36	2.0	24.0					
56	1	12" x 12" x 1/2"	PL	A36	2.0	24.0					
57	1	12" x 12" x 1/2"	PL	A36	2.0	24.0					
58	1	12" x 12" x 1/2"	PL	A36	2.0	24.0					
59	1	12" x 12" x 1/2"	PL	A36	2.0	24.0					
60	1	12" x 12" x 1/2"	PL	A36	2.0	24.0					
61	1	12" x 12" x 1/2"	PL	A36	2.0	24.0					
62	1	12" x 12" x 1/2"	PL	A36	2.0	24.0					
63	1	12" x 12" x 1/2"	PL	A36	2.0	24.0					
64	1	12" x 12" x 1/2"	PL	A36	2.0	24.0					
65	1	12" x 12" x 1/2"	PL	A36	2.0	24.0					
66	1	12" x 12" x 1/2"	PL	A36	2.0	24.0					
67	1	12" x 12" x 1/2"	PL	A36	2.0	24.0					
68	1	12" x 12" x 1/2"	PL	A36	2.0	24.0					
69	1	12" x 12" x 1/2"	PL	A36	2.0	24.0					
70	1	12" x 12" x 1/2"	PL	A36	2.0	24.0					
71	1	12" x 12" x 1/2"	PL	A36	2.0	24.0					
72	1	12" x 12" x 1/2"	PL	A36	2.0	24.0					
73	1	12" x 12" x 1/2"	PL	A36	2.0	24.0					
74	1	12" x 12" x 1/2"	PL	A36	2.0	24.0					
75	1	12" x 12" x 1/2"	PL	A36	2.0	24.0					
76	1	12" x 12" x 1/2"	PL	A36	2.0	24.0					
77	1	12" x 12" x 1/2"	PL	A36	2.0	24.0					
78	1	12" x 12" x 1/2"	PL	A36	2.0	24.0					
79	1	12" x 12" x 1/2"	PL	A36	2.0	24.0					
80	1	12" x 12" x 1/2"	PL	A36	2.0	24.0					
81	1	12" x 12" x 1/2"	PL	A36	2.0	24.0					
82	1	12" x 12" x 1/2"	PL	A36	2.0	24.0					
83	1	12" x 12" x 1/2"	PL	A36	2.0	24.0					
84	1	12" x 12" x 1/2"	PL	A36	2.0	24.0					
85	1	12" x 12" x 1/2"	PL	A36	2.0	24.0					
86	1	12" x 12" x 1/2"	PL	A36	2.0	24.0					
87	1	12" x 12" x 1/2"	PL	A36	2.0	24.0					
88	1	12" x 12" x 1/2"	PL	A36	2.0	24.0					
89	1	12" x 12" x 1/2"	PL	A36	2.0	24.0					
90	1	12" x 12" x 1/2"	PL	A36	2.0	24.0					
91	1	12" x 12" x 1/2"	PL	A36	2.0	24.0					
92	1	12" x 12" x 1/2"	PL	A36	2.0	24.0					
93	1	12" x 12" x 1/2"	PL	A36	2.0	24.0					

EXPANSION ROCKERS & ANCHORS PL.

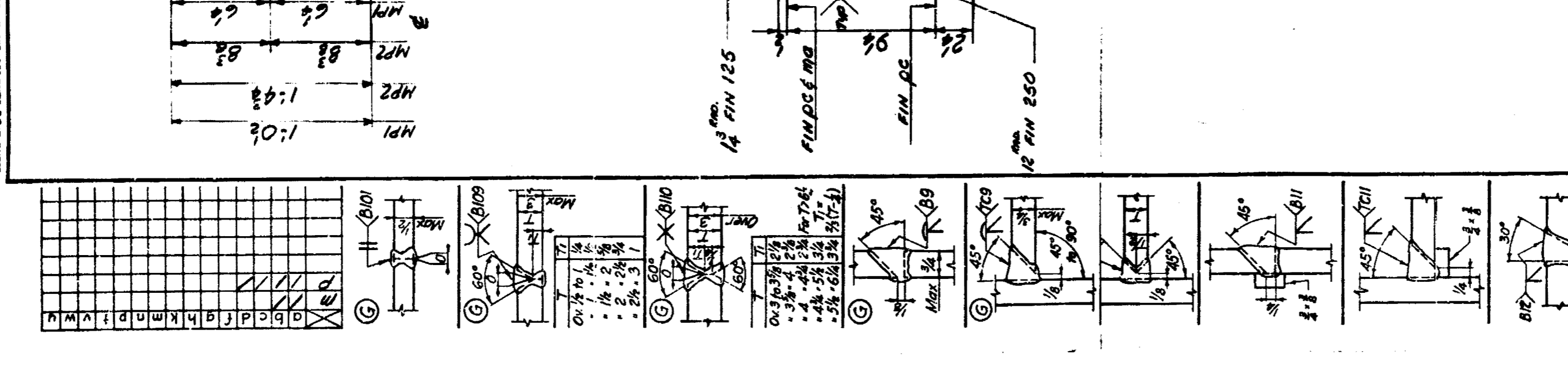
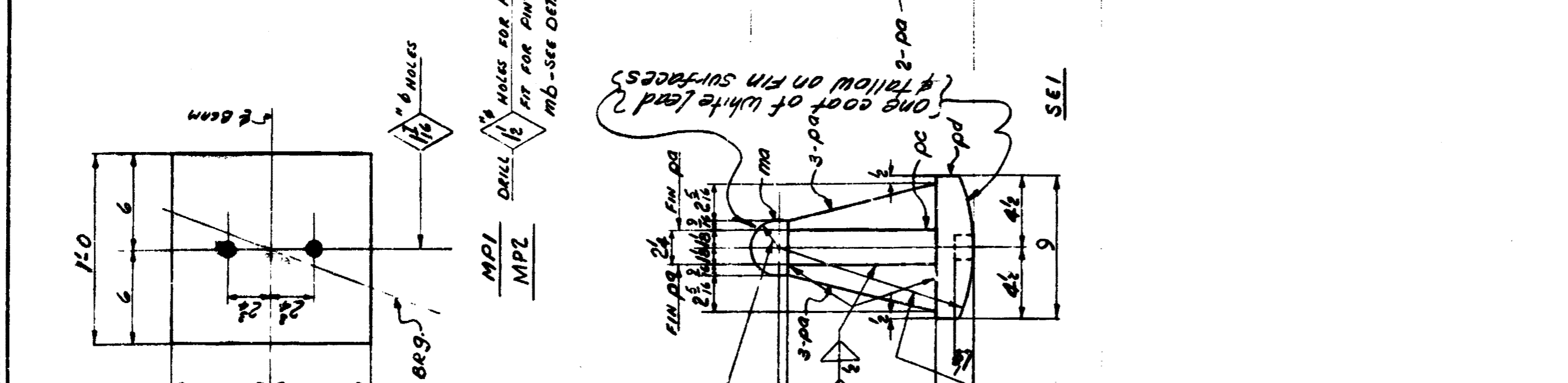
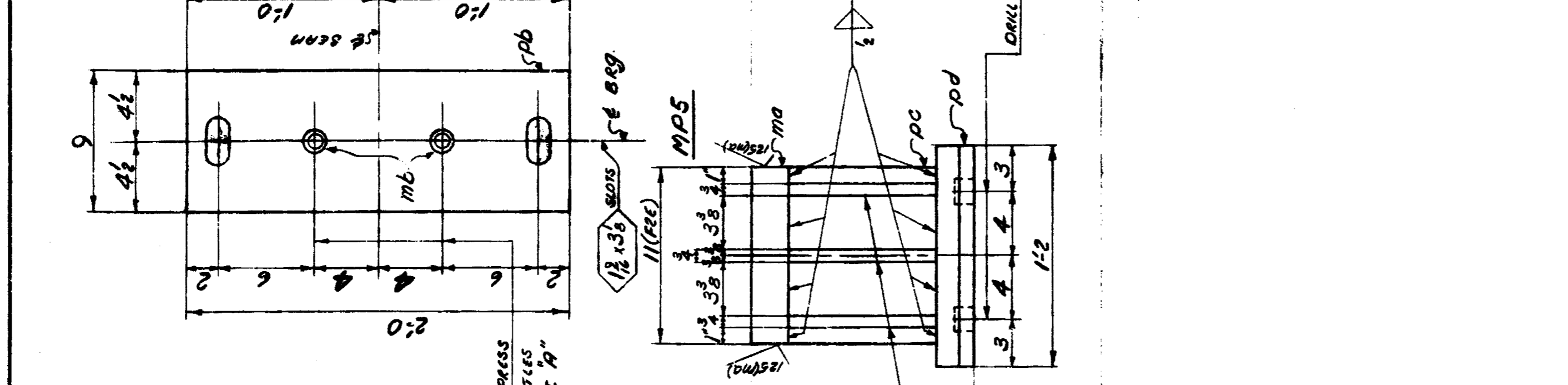
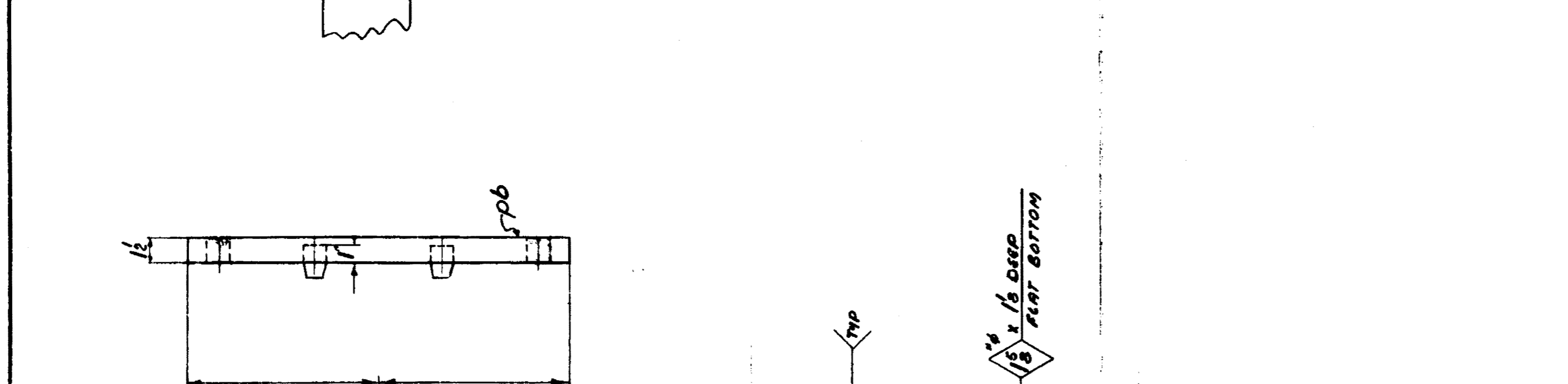
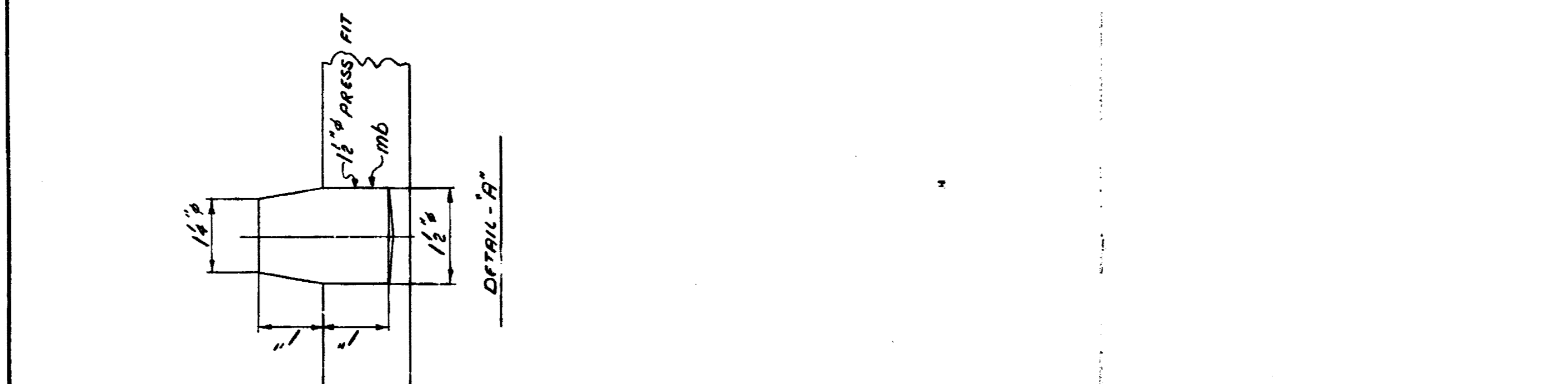
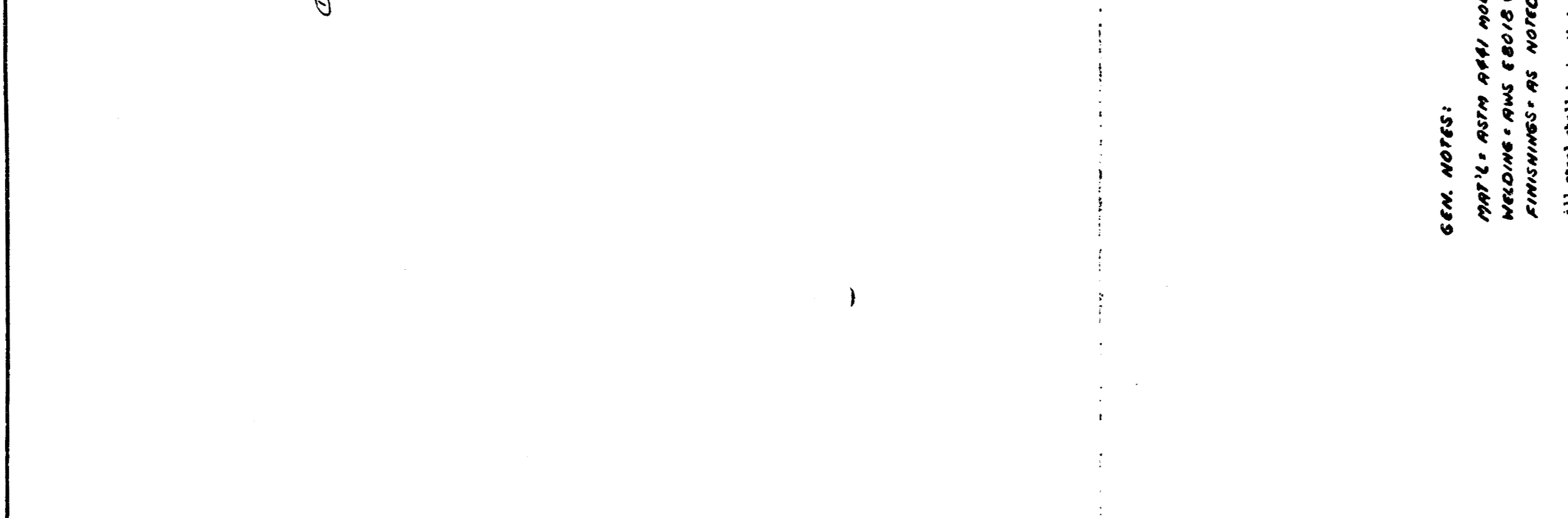
USS American Bridge
Division of United States Steel Corporation

MICHIGAN DEPT. OF STATE HIGHWAYS
BRIDGE NO. 1 OF 8212K
HARRIS ROAD, OVER I-96
(JEFFRIES FREEWAY)
WAYNE COUNTY, MICHIGAN

MANUFACTURED BY: GARY
DRAWING MADE BY: GARY #2
DATE: 1/18/58
CHECKED BY: RLB
DATE: 1/18/58
IN CHARGE OF: ROSENTHAL - 5653

ORDER NO. K2828
SHEET NO. 101

NOV. BILL: 101, 105, 107

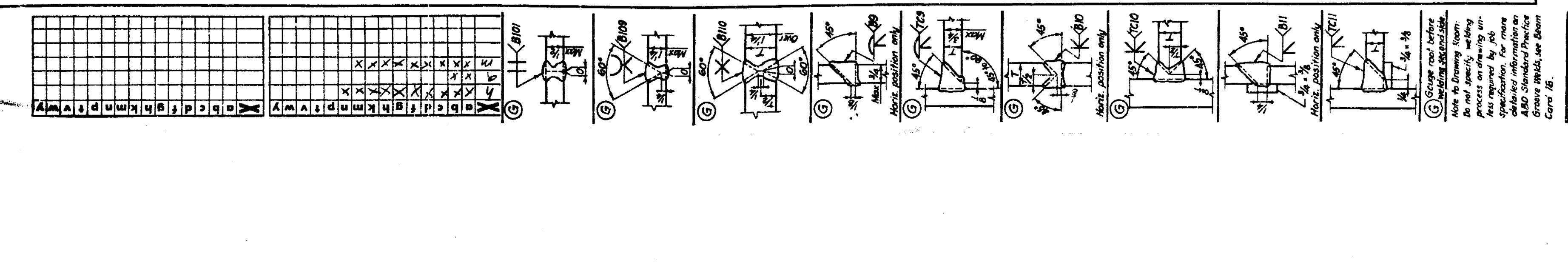
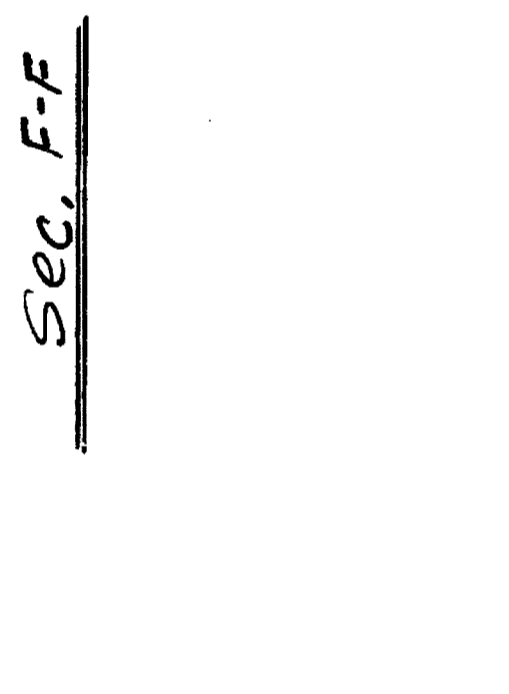
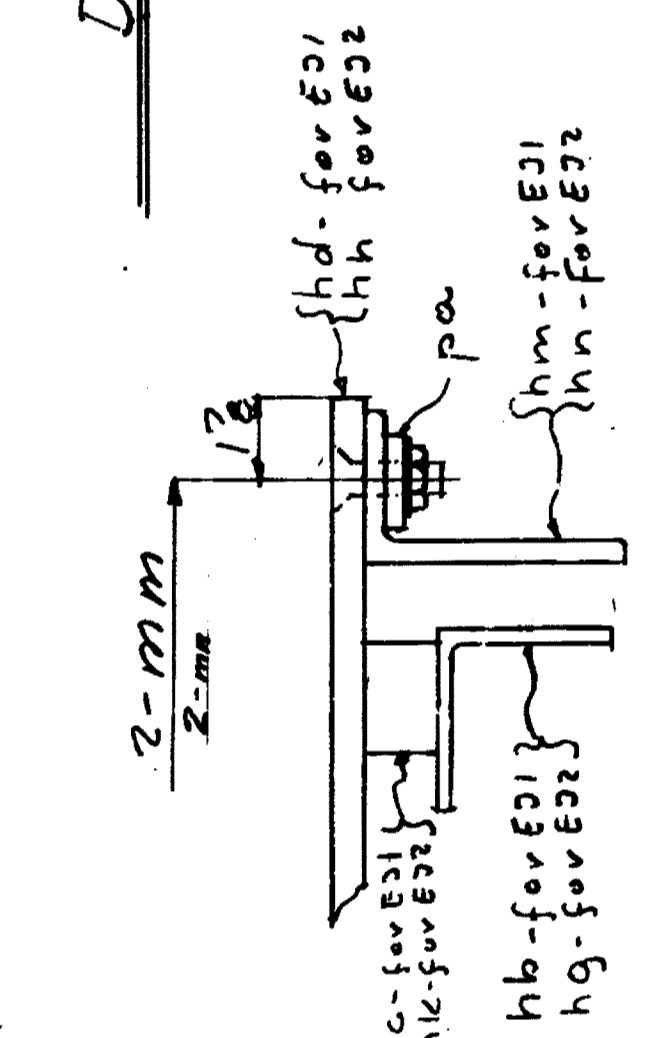
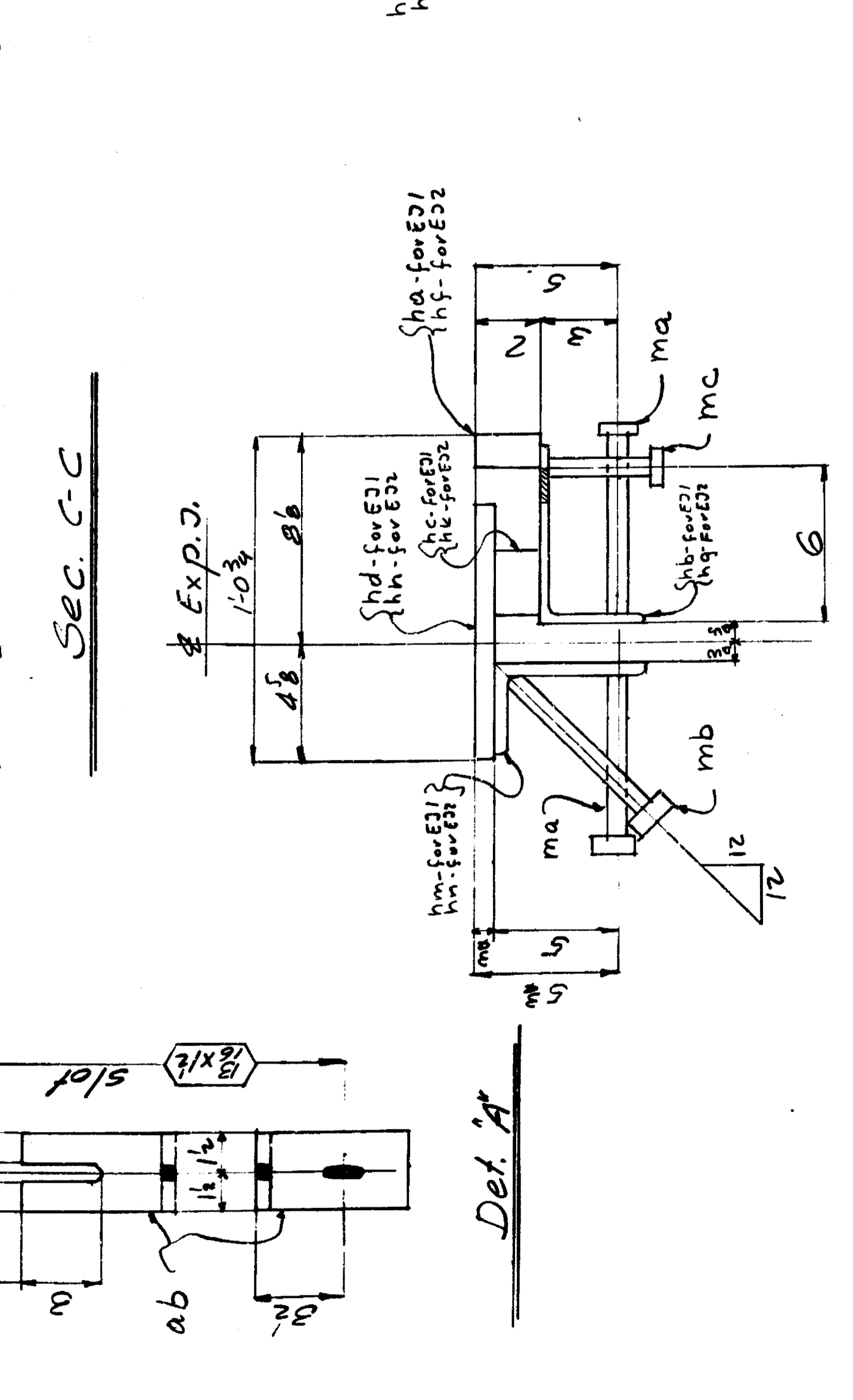
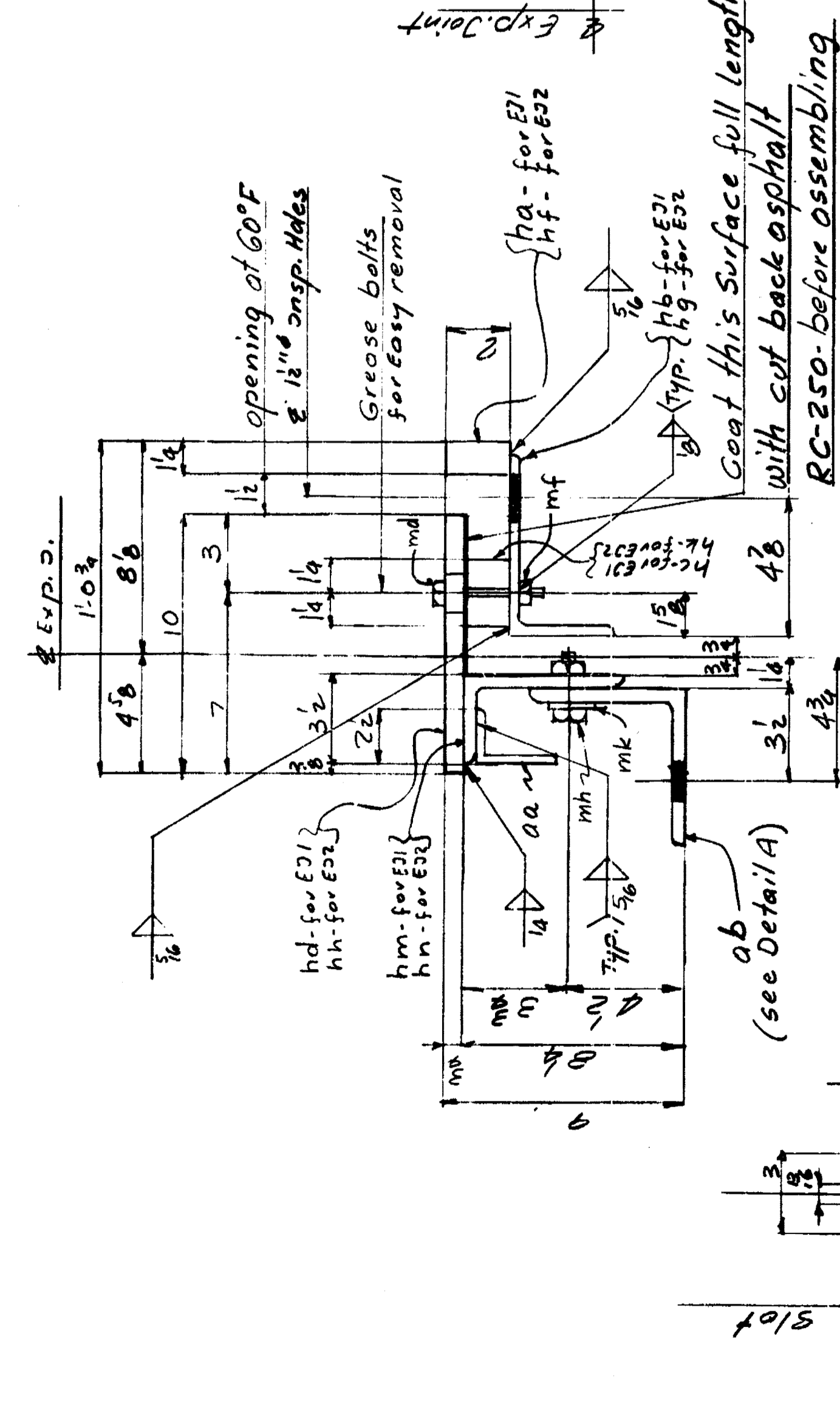
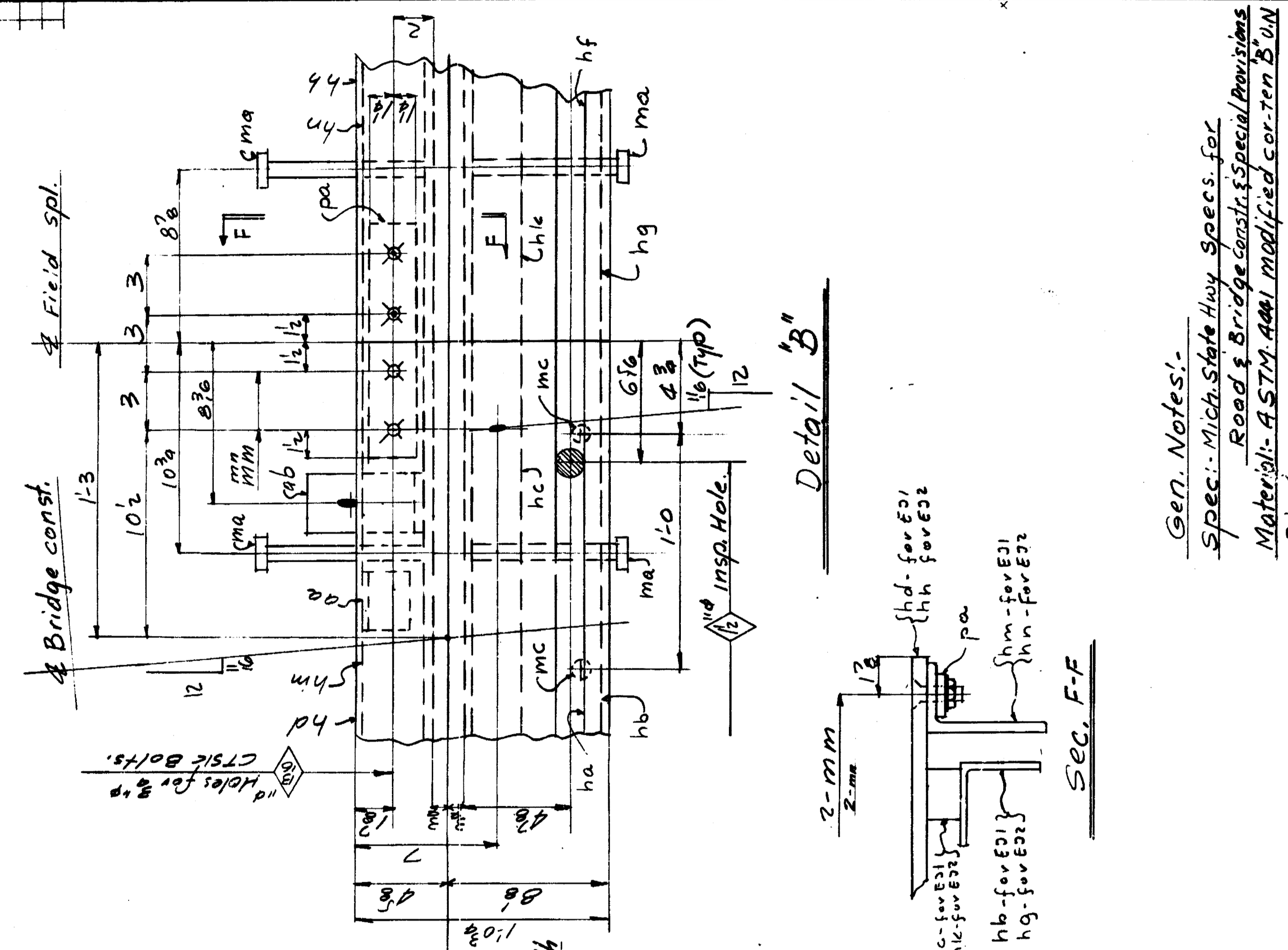


GEN. NOTES:
PARTS - ASTM A36 MODIFIED CORTEN B
WELDING - AWS E6018
FINISHES - AS NOTED

All steel shall be handled carefully and shall be kept free of dirt, oil, grease, etc. All shipping marks shall be made using a permanent marking tool.

The finishing of concrete will not be required.

QUANTITY		UNIT PRICE		TOTAL PRICE		ITEM	REMARKS	SPECIFICATIONS OR ASSUMING REFERENCE	QUANTITY IN ORDERING UNIT	UNIT PRICE	TOTAL PRICE
NO.	DESCRIPTION	UNIT	PRICE	AMOUNT	TAX						
1	EXPANSION JOINT	201E21									
2	1 FIT 2 1/4	201E21									
3	1 L 7 4	201E21									
4	1 PL 2 1/4	201E21									
5	1 PL 10 3/4	201E21									
6	1 PL 10 3/4	201E21									
7	1 PL 10 3/4	201E21									
8	1 PL 10 3/4	201E21									
9	1 PL 10 3/4	201E21									
10	1 PL 10 3/4	201E21									
11	1 PL 10 3/4	201E21									
12	1 PL 10 3/4	201E21									
13	1 PL 10 3/4	201E21									
14	1 PL 10 3/4	201E21									
15	1 PL 10 3/4	201E21									
16	1 PL 10 3/4	201E21									
17	1 PL 10 3/4	201E21									
18	1 PL 10 3/4	201E21									
19	1 PL 10 3/4	201E21									
20	1 PL 10 3/4	201E21									
21	1 PL 10 3/4	201E21									
22	1 PL 10 3/4	201E21									
23	1 PL 10 3/4	201E21									
24	1 PL 10 3/4	201E21									
25	1 PL 10 3/4	201E21									
26	1 PL 10 3/4	201E21									
27	1 PL 10 3/4	201E21									
28	1 PL 10 3/4	201E21									
29	1 PL 10 3/4	201E21									
30	1 PL 10 3/4	201E21									
31	1 PL 10 3/4	201E21									
32	1 PL 10 3/4	201E21									
33	1 PL 10 3/4	201E21									
34	1 PL 10 3/4	201E21									
35	1 PL 10 3/4	201E21									
36	1 PL 10 3/4	201E21									
37	1 PL 10 3/4	201E21									
38	1 PL 10 3/4	201E21									
39	1 PL 10 3/4	201E21									
40	1 PL 10 3/4	201E21									
41	1 PL 10 3/4	201E21									
42	1 PL 10 3/4	201E21									
43	1 PL 10 3/4	201E21									
44	1 PL 10 3/4	201E21									
45	1 PL 10 3/4	201E21									
46	1 PL 10 3/4	201E21									
47	1 PL 10 3/4	201E21									
48	1 PL 10 3/4	201E21									
49	1 PL 10 3/4	201E21									
50	1 PL 10 3/4	201E21									
51	1 PL 10 3/4	201E21									
52	1 PL 10 3/4	201E21									
53	1 PL 10 3/4	201E21									
54	1 PL 10 3/4	201E21									
55	1 PL 10 3/4	201E21									
56	1 PL 10 3/4	201E21									
57	1 PL 10 3/4	201E21									
58	1 PL 10 3/4	201E21									
59	1 PL 10 3/4	201E21									
60	1 PL 10 3/4	201E21									
61	1 PL 10 3/4	201E21									
62	1 PL 10 3/4	201E21									



MICHIGAN DEPT. OF STATE HIGHWAYS
BRIDGE NO. OF 2222K
EVERGREEN ROAD OVER I 96
(JEFFRIES FREEWAY)
DETROIT, (WAYNE COUNTY) MICHIGAN

Expansion Joint
American Bridge
Division of United States Steel Corporation

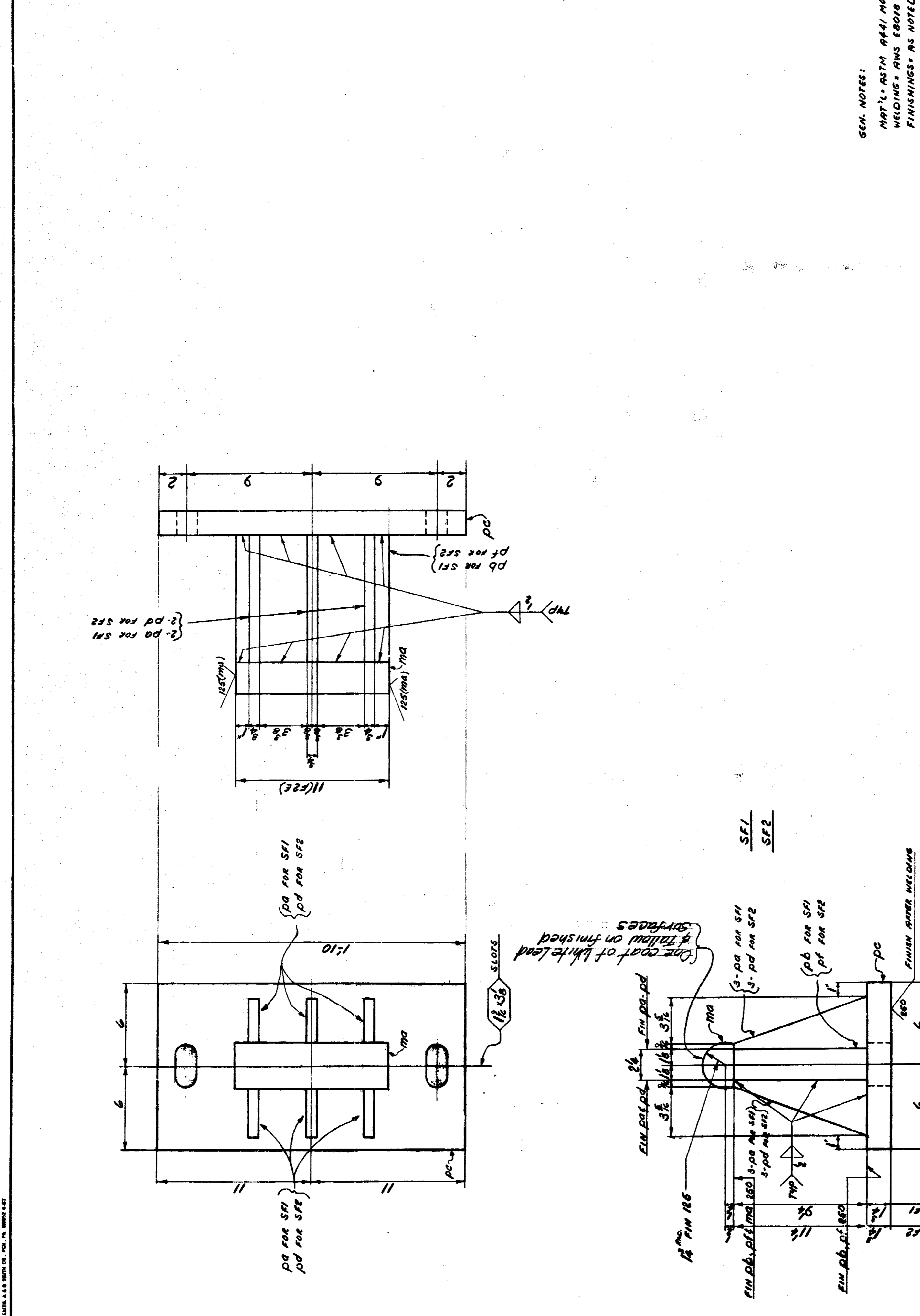
FABRICATION UNDER THE
DRAWING MADE BY Gary
MADE BY M.I.Z. DATE 1/21/55
IN CHARGE OF Augenshine # 5559

ORDER NO. K 2828
SHEET NO. 201B

SECTION NO. E6 F7

Gen. Notes:-
Spec:- Mich. State Hwy Specs. for Road & Bridge const. & Special Provisions
Material:- ASTM A441 modified cor-ten B 10 N
Rivets:- None
Open Holes:- As Noted
Welding:- Yes AWS spec. for welded Hwy & Railway Bridges
USE E 70XX LOW HYDROGEN ELECTRODES
OR E 71-XXXX OR E 72-XXXX E 6X AND ELECTRODE COMBINATIONS.
Paint:- None
Shop contact surfaces:- No
All steel shall be limited acidity and shall be free of mill scale, slag, dirt, etc. All shipping marks shall be made using a steel die.
The following of orders will be to be so quoted.

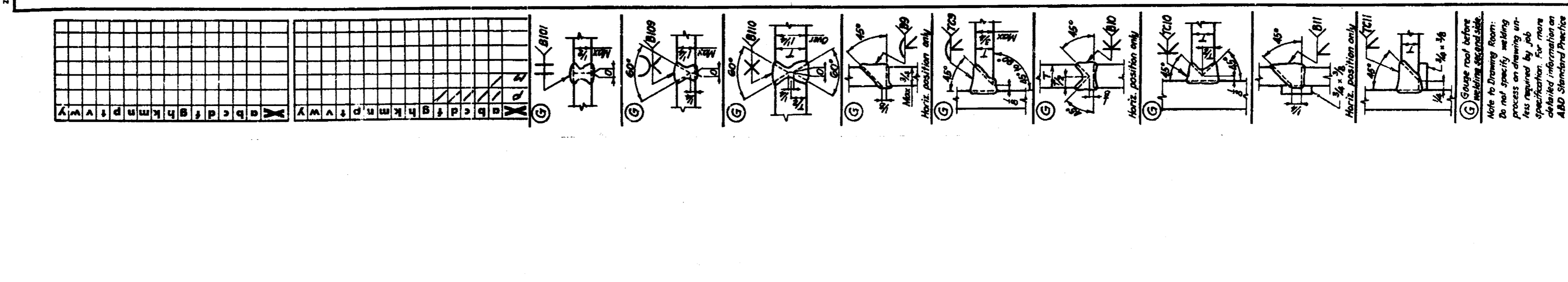
LINE NO.	DESCRIPTION	QUANTITY	UNIT	MATERIAL		FINISH	MARK	REMARKS	DATE
				GRADE	SIZE				
1	PL 36			36	PL	202 SF1			
2	PL 36			36	PL	202 SF2			
3	PL 36			36	PL	202 SF1			
4	PL 36			36	PL	202 SF2			
5	PL 36			36	PL	202 SF1			
6	PL 36			36	PL	202 SF2			
7	PL 36			36	PL	202 SF1			
8	PL 36			36	PL	202 SF2			
9	PL 36			36	PL	202 SF1			
10	PL 36			36	PL	202 SF2			
11	PL 36			36	PL	202 SF1			
12	PL 36			36	PL	202 SF2			
13	PL 36			36	PL	202 SF1			
14	PL 36			36	PL	202 SF2			
15	PL 36			36	PL	202 SF1			
16	PL 36			36	PL	202 SF2			
17	PL 36			36	PL	202 SF1			
18	PL 36			36	PL	202 SF2			
19	PL 36			36	PL	202 SF1			
20	PL 36			36	PL	202 SF2			
21	PL 36			36	PL	202 SF1			
22	PL 36			36	PL	202 SF2			
23	PL 36			36	PL	202 SF1			
24	PL 36			36	PL	202 SF2			
25	PL 36			36	PL	202 SF1			
26	PL 36			36	PL	202 SF2			
27	PL 36			36	PL	202 SF1			
28	PL 36			36	PL	202 SF2			
29	PL 36			36	PL	202 SF1			
30	PL 36			36	PL	202 SF2			
31	PL 36			36	PL	202 SF1			
32	PL 36			36	PL	202 SF2			
33	PL 36			36	PL	202 SF1			
34	PL 36			36	PL	202 SF2			
35	PL 36			36	PL	202 SF1			
36	PL 36			36	PL	202 SF2			
37	PL 36			36	PL	202 SF1			
38	PL 36			36	PL	202 SF2			
39	PL 36			36	PL	202 SF1			
40	PL 36			36	PL	202 SF2			
41	PL 36			36	PL	202 SF1			
42	PL 36			36	PL	202 SF2			
43	PL 36			36	PL	202 SF1			
44	PL 36			36	PL	202 SF2			
45	PL 36			36	PL	202 SF1			
46	PL 36			36	PL	202 SF2			
47	PL 36			36	PL	202 SF1			
48	PL 36			36	PL	202 SF2			
49	PL 36			36	PL	202 SF1			
50	PL 36			36	PL	202 SF2			
51	PL 36			36	PL	202 SF1			
52	PL 36			36	PL	202 SF2			
53	PL 36			36	PL	202 SF1			
54	PL 36			36	PL	202 SF2			
55	PL 36			36	PL	202 SF1			
56	PL 36			36	PL	202 SF2			
57	PL 36			36	PL	202 SF1			
58	PL 36			36	PL	202 SF2			
59	PL 36			36	PL	202 SF1			
60	PL 36			36	PL	202 SF2			
61	PL 36			36	PL	202 SF1			
62	PL 36			36	PL	202 SF2			
63	PL 36			36	PL	202 SF1			
64	PL 36			36	PL	202 SF2			
65	PL 36			36	PL	202 SF1			
66	PL 36			36	PL	202 SF2			
67	PL 36			36	PL	202 SF1			
68	PL 36			36	PL	202 SF2			
69	PL 36			36	PL	202 SF1			
70	PL 36			36	PL	202 SF2			
71	PL 36			36	PL	202 SF1			
72	PL 36			36	PL	202 SF2			
73	PL 36			36	PL	202 SF1			
74	PL 36			36	PL	202 SF2			
75	PL 36			36	PL	202 SF1			
76	PL 36			36	PL	202 SF2			
77	PL 36			36	PL	202 SF1			
78	PL 36			36	PL	202 SF2			
79	PL 36			36	PL	202 SF1			
80	PL 36			36	PL	202 SF2			
81	PL 36			36	PL	202 SF1			
82	PL 36			36	PL	202 SF2			
83	PL 36			36	PL	202 SF1			
84	PL 36			36	PL	202 SF2			
85	PL 36			36	PL	202 SF1			
86	PL 36			36	PL	202 SF2			
87	PL 36			36	PL	202 SF1			
88	PL 36			36	PL	202 SF2			
89	PL 36			36	PL	202 SF1			
90	PL 36			36	PL	202 SF2			
91	PL 36			36	PL	202 SF1			
92	PL 36			36	PL	202 SF2			
93	PL 36			36	PL	202 SF1			
94	PL 36			36	PL	202 SF2			
95	PL 36			36	PL	202 SF1			
96	PL 36			36	PL	202 SF2			
97	PL 36			36	PL	202 SF1			
98	PL 36			36	PL	202 SF2			
99	PL 36			36	PL	202 SF1			
100	PL 36			36	PL	202 SF2			



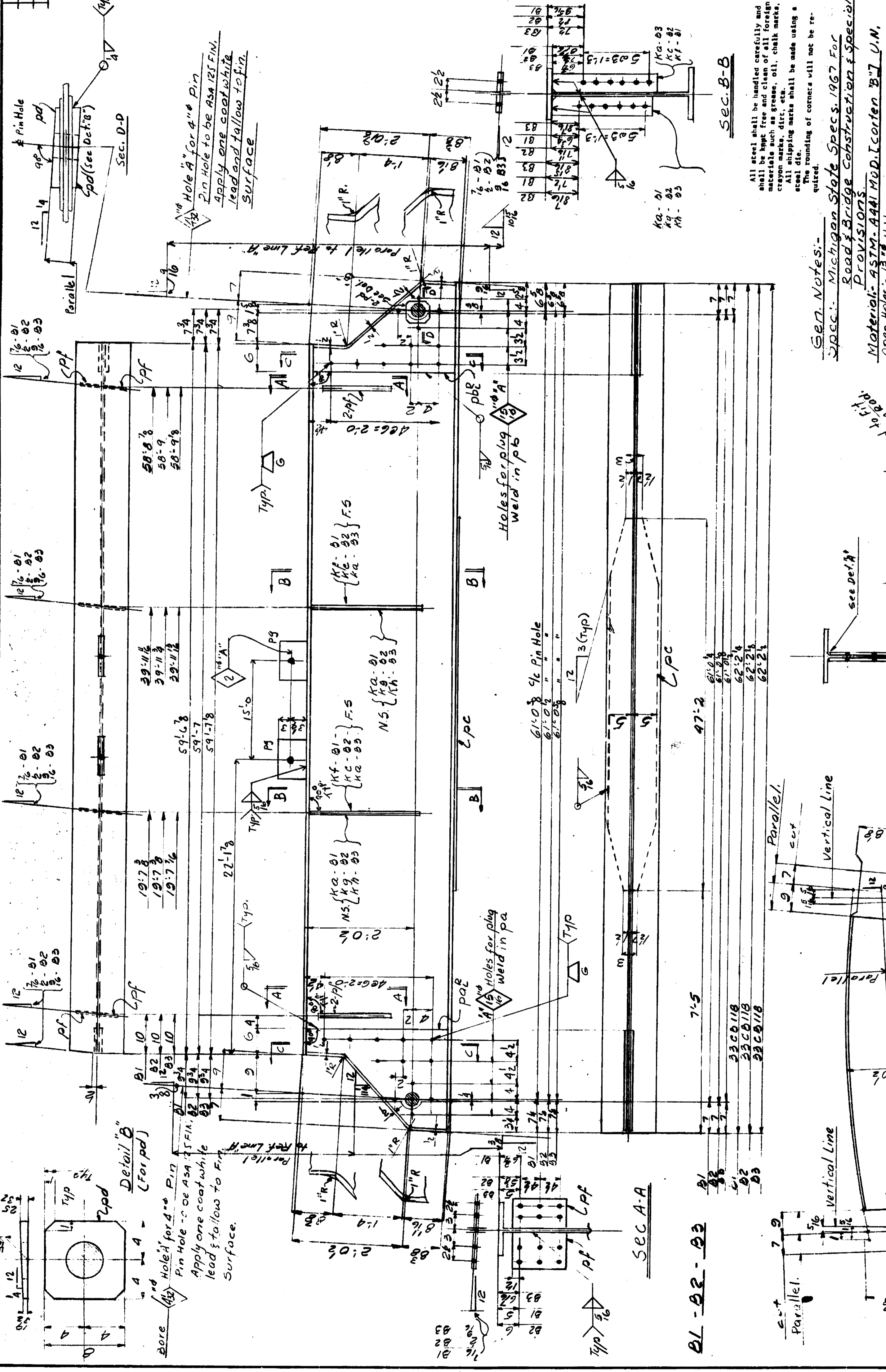
GEN. NOTES:
 MAT'L - ASTM A441 MODIFIED CORTEN B
 WELDING - AWS E6018 C1
 FINISHING - AS NOTED
 All steel shall be handled carefully and shall be kept free and clean of all foreign materials such as grease, oil, chalk marks, crayon marks, dirt, etc.
 All shoping marks shall be made using a white marking paint.
 The painting of corners will not be required.

MICHIGAN DEPT. OF STATE HIGHWAYS
 BRIDGE NO. OF 8222K
 EVERGREEN ROAD OVER I-96
 (JEFFRIES FREEWAY)
 DETROIT, (WAYNE COUNTY) MICHIGAN
 SPEC'S: MOSM-1947 EDITION
 CURRENT AASHTO

UNITED STATES STEEL CORPORATION
USS American Bridge
 DIVISION OF UNITED STATES STEEL CORPORATION
 FABRICATION ASSIGNED TO: GARY #2
 DRAWING MADE BY: GARY #2
 MADE BY: ACR
 DATE MADE: 10/15/58
 CHECKED BY: R. L. HANCOCK
 IN CHARGE OF: AUGUSTINE-5583
 SHEET NO. 202
 ORDER NO. K2828
 DRAWING TITLE: EG-E7-E8 of E9
 REVISIONS:
 A
 B
 C
 D
 E
 F



ITEM NO.	QUANTITY	UNIT	DESCRIPTION	SPECIFICATION	MARK	DATE	MATERIAL		REMARKS
							TYPE	GRADE	
1	1	LB	BEAM	207B1	62'				
2	1	LB	PL	207B1	62'				
3	1	LB	PL	207B1	62'				
4	1	LB	PL	207B1	62'				
5	1	LB	PL	207B1	62'				
6	1	LB	PL	207B1	62'				
7	1	LB	PL	207B1	62'				
8	1	LB	PL	207B1	62'				
9	1	LB	PL	207B1	62'				
10	1	LB	PL	207B1	62'				
11	1	LB	PL	207B1	62'				
12	1	LB	PL	207B1	62'				
13	1	LB	PL	207B1	62'				
14	1	LB	PL	207B1	62'				
15	1	LB	PL	207B1	62'				
16	1	LB	PL	207B1	62'				
17	1	LB	PL	207B1	62'				
18	1	LB	PL	207B1	62'				
19	1	LB	PL	207B1	62'				
20	1	LB	PL	207B1	62'				
21	1	LB	PL	207B1	62'				
22	1	LB	PL	207B1	62'				
23	1	LB	PL	207B1	62'				
24	1	LB	PL	207B1	62'				
25	1	LB	PL	207B1	62'				
26	1	LB	PL	207B1	62'				
27	1	LB	PL	207B1	62'				
28	1	LB	PL	207B1	62'				
29	1	LB	PL	207B1	62'				
30	1	LB	PL	207B1	62'				
31	1	LB	PL	207B1	62'				
32	1	LB	PL	207B1	62'				
33	1	LB	PL	207B1	62'				
34	1	LB	PL	207B1	62'				
35	1	LB	PL	207B1	62'				
36	1	LB	PL	207B1	62'				
37	1	LB	PL	207B1	62'				
38	1	LB	PL	207B1	62'				
39	1	LB	PL	207B1	62'				
40	1	LB	PL	207B1	62'				
41	1	LB	PL	207B1	62'				
42	1	LB	PL	207B1	62'				
43	1	LB	PL	207B1	62'				
44	1	LB	PL	207B1	62'				
45	1	LB	PL	207B1	62'				
46	1	LB	PL	207B1	62'				
47	1	LB	PL	207B1	62'				
48	1	LB	PL	207B1	62'				
49	1	LB	PL	207B1	62'				
50	1	LB	PL	207B1	62'				
51	1	LB	PL	207B1	62'				
52	1	LB	PL	207B1	62'				
53	1	LB	PL	207B1	62'				
54	1	LB	PL	207B1	62'				
55	1	LB	PL	207B1	62'				
56	1	LB	PL	207B1	62'				
57	1	LB	PL	207B1	62'				
58	1	LB	PL	207B1	62'				
59	1	LB	PL	207B1	62'				
60	1	LB	PL	207B1	62'				
61	1	LB	PL	207B1	62'				
62	1	LB	PL	207B1	62'				
63	1	LB	PL	207B1	62'				
64	1	LB	PL	207B1	62'				
65	1	LB	PL	207B1	62'				
66	1	LB	PL	207B1	62'				
67	1	LB	PL	207B1	62'				
68	1	LB	PL	207B1	62'				
69	1	LB	PL	207B1	62'				
70	1	LB	PL	207B1	62'				
71	1	LB	PL	207B1	62'				
72	1	LB	PL	207B1	62'				
73	1	LB	PL	207B1	62'				
74	1	LB	PL	207B1	62'				
75	1	LB	PL	207B1	62'				
76	1	LB	PL	207B1	62'				
77	1	LB	PL	207B1	62'				
78	1	LB	PL	207B1	62'				
79	1	LB	PL	207B1	62'				
80	1	LB	PL	207B1	62'				
81	1	LB	PL	207B1	62'				
82	1	LB	PL	207B1	62'				
83	1	LB	PL	207B1	62'				
84	1	LB	PL	207B1	62'				
85	1	LB	PL	207B1	62'				
86	1	LB	PL	207B1	62'				
87	1	LB	PL	207B1	62'				
88	1	LB	PL	207B1	62'				
89	1	LB	PL	207B1	62'				
90	1	LB	PL	207B1	62'				
91	1	LB	PL	207B1	62'				
92	1	LB	PL	207B1	62'				
93	1	LB	PL	207B1	62'				
94	1	LB	PL	207B1	62'				
95	1	LB	PL	207B1	62'				
96	1	LB	PL	207B1	62'				
97	1	LB	PL	207B1	62'				
98	1	LB	PL	207B1	62'				
99	1	LB	PL	207B1	62'				
100	1	LB	PL	207B1	62'				



MICHIGAN DEPT. OF STATE HIGHWAYS
 STATE ROUTE 24
 EVANSTON ROAD OVER I-96
 (JEFFRIES FREEWAY)
 DETROIT, (WAYNE COUNTY), MICHIGAN

BEAMS SPAN #2

American Bridge Company
 Division of United States Steel

PREPARED BY: Gary #2
 CHECKED BY: Gary #2
 DATE: 1-15-63
 IN CHARGE OF: Augustine #5559

PROJECT NO. K2828
 SHEET NO. 207

Sec. Notes:-
 Specs.: Michigan State Specs. 1967 For
 Road & Bridge Construction & Special
 Provisions.
 Material: ASTM-A441 MDD, I Corlen B7 U.N.
 Open Holes: 1/2" U.N.
 Welding: AWS & Special Provisions
 Use E70XX Low Hydrogen Electrode
 Paint: NO

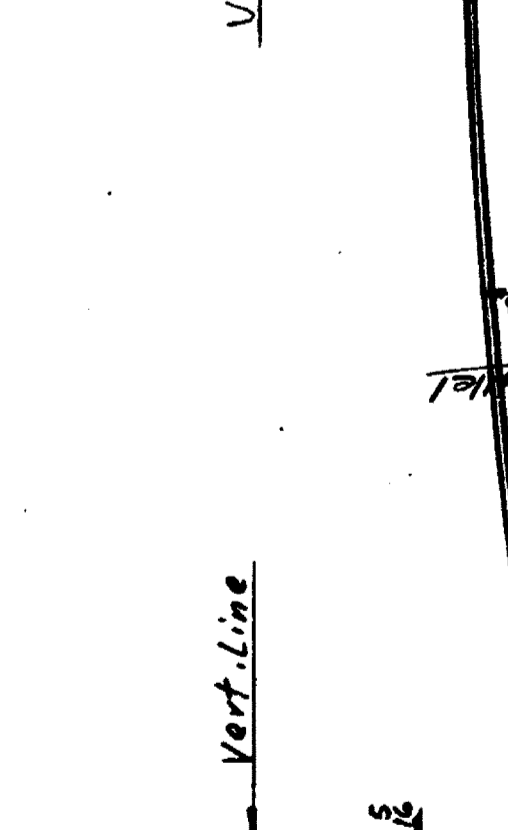
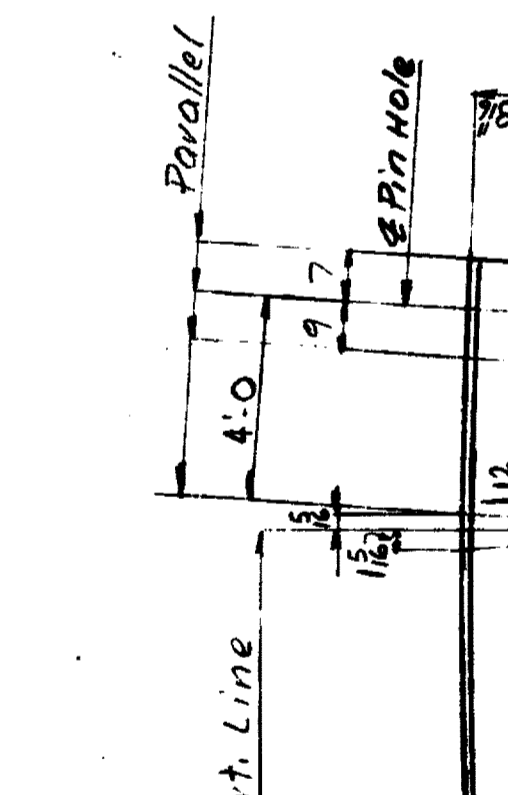
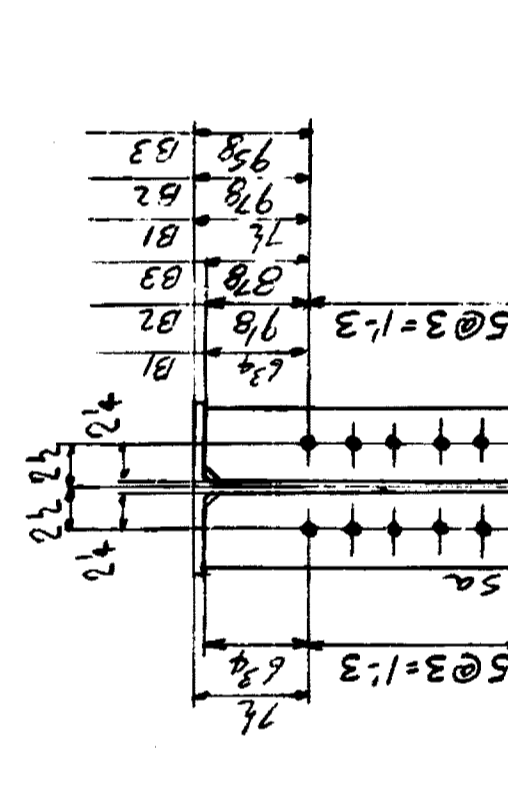
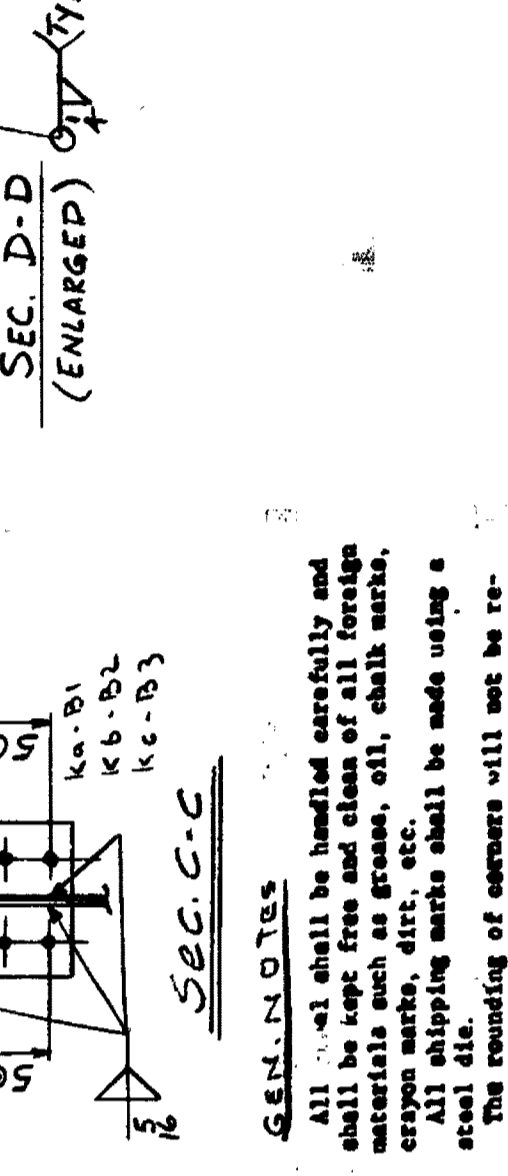
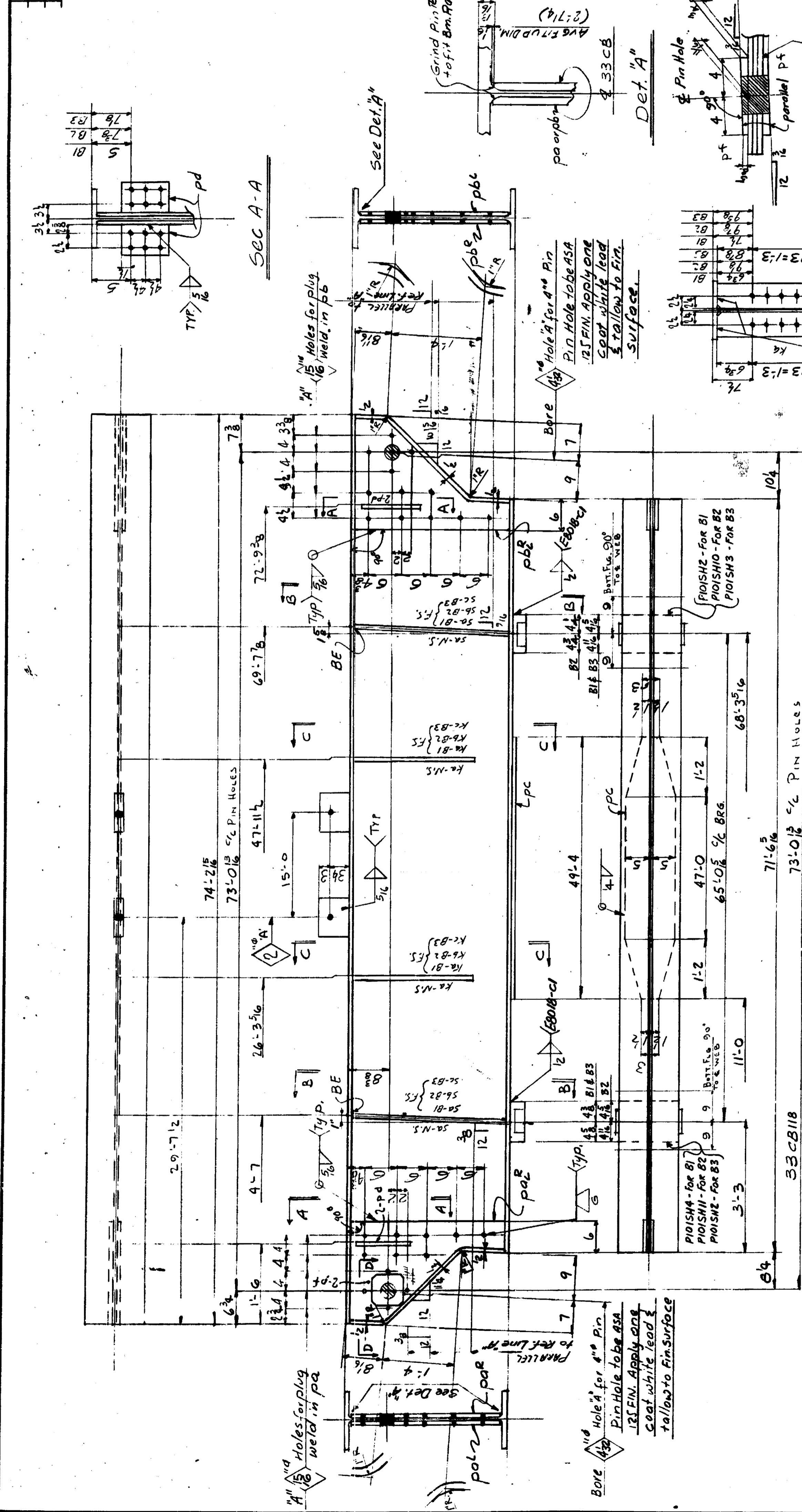
All steel shall be handled carefully and
 shall be kept free of all foreign
 materials such as grease, oil, chalk marks,
 crayon marks, dirt, etc.
 All shipping marks shall be made using a
 steel stamp.
 The rounding of corners will not be re-
 quired.

Comber: Comber is to be measured with
 the beam lying on its side. Allowable
 Comber tolerance is 1/4". Heat is to be
 used if necessary to assure
 Comber permanency.
 Open Holes are for High Strength Structural
 Bolts U.N. #4
 All snips on shifts to be
 18" x 18"

Cutting & Comber Diagram

ITEM NO.	QTY	UNIT	DESCRIPTION	MATERIAL	SPECIFICATION	REMARKS	CALCULATED WEIGHT	ESTIMATED WEIGHT	UNIT PRICE	TOTAL PRICE
1	1	BEAM	74'	210B1	74'					
2	1	BEAM	74'	210B2	74'					
3	1	BEAM	74'	210B3	74'					
4	3	CB	53 1/8"							
5	6	PL	10 1/2"							
6	3	PL	10 1/2"							
7	6	PL	10 1/2"							
8	6	PL	10 1/2"							
9	6	PL	10 1/2"							
10	6	PL	10 1/2"							
11	6	PL	10 1/2"							
12	6	PL	10 1/2"							
13	6	PL	10 1/2"							
14	6	PL	10 1/2"							
15	6	PL	10 1/2"							
16	6	PL	10 1/2"							
17	6	PL	10 1/2"							
18	6	PL	10 1/2"							
19	6	PL	10 1/2"							
20	6	PL	10 1/2"							
21	6	PL	10 1/2"							
22	6	PL	10 1/2"							
23	6	PL	10 1/2"							
24	6	PL	10 1/2"							
25	6	PL	10 1/2"							
26	6	PL	10 1/2"							
27	6	PL	10 1/2"							
28	6	PL	10 1/2"							
29	6	PL	10 1/2"							
30	6	PL	10 1/2"							
31	6	PL	10 1/2"							
32	6	PL	10 1/2"							
33	6	PL	10 1/2"							
34	6	PL	10 1/2"							
35	6	PL	10 1/2"							
36	6	PL	10 1/2"							
37	6	PL	10 1/2"							
38	6	PL	10 1/2"							
39	6	PL	10 1/2"							
40	6	PL	10 1/2"							
41	6	PL	10 1/2"							
42	6	PL	10 1/2"							
43	6	PL	10 1/2"							
44	6	PL	10 1/2"							
45	6	PL	10 1/2"							
46	6	PL	10 1/2"							
47	6	PL	10 1/2"							
48	6	PL	10 1/2"							
49	6	PL	10 1/2"							
50	6	PL	10 1/2"							
51	6	PL	10 1/2"							
52	6	PL	10 1/2"							
53	6	PL	10 1/2"							
54	6	PL	10 1/2"							
55	6	PL	10 1/2"							
56	6	PL	10 1/2"							
57	6	PL	10 1/2"							
58	6	PL	10 1/2"							
59	6	PL	10 1/2"							
60	6	PL	10 1/2"							
61	6	PL	10 1/2"							
62	6	PL	10 1/2"							
63	6	PL	10 1/2"							
64	6	PL	10 1/2"							
65	6	PL	10 1/2"							
66	6	PL	10 1/2"							
67	6	PL	10 1/2"							
68	6	PL	10 1/2"							
69	6	PL	10 1/2"							
70	6	PL	10 1/2"							
71	6	PL	10 1/2"							
72	6	PL	10 1/2"							
73	6	PL	10 1/2"							
74	6	PL	10 1/2"							
75	6	PL	10 1/2"							
76	6	PL	10 1/2"							
77	6	PL	10 1/2"							
78	6	PL	10 1/2"							
79	6	PL	10 1/2"							
80	6	PL	10 1/2"							
81	6	PL	10 1/2"							
82	6	PL	10 1/2"							
83	6	PL	10 1/2"							
84	6	PL	10 1/2"							
85	6	PL	10 1/2"							
86	6	PL	10 1/2"							
87	6	PL	10 1/2"							
88	6	PL	10 1/2"							
89	6	PL	10 1/2"							
90	6	PL	10 1/2"							
91	6	PL	10 1/2"							
92	6	PL	10 1/2"							
93	6	PL	10 1/2"							
94	6	PL	10 1/2"							
95	6	PL	10 1/2"							
96	6	PL	10 1/2"							
97	6	PL	10 1/2"							
98	6	PL	10 1/2"							
99	6	PL	10 1/2"							
100	6	PL	10 1/2"							

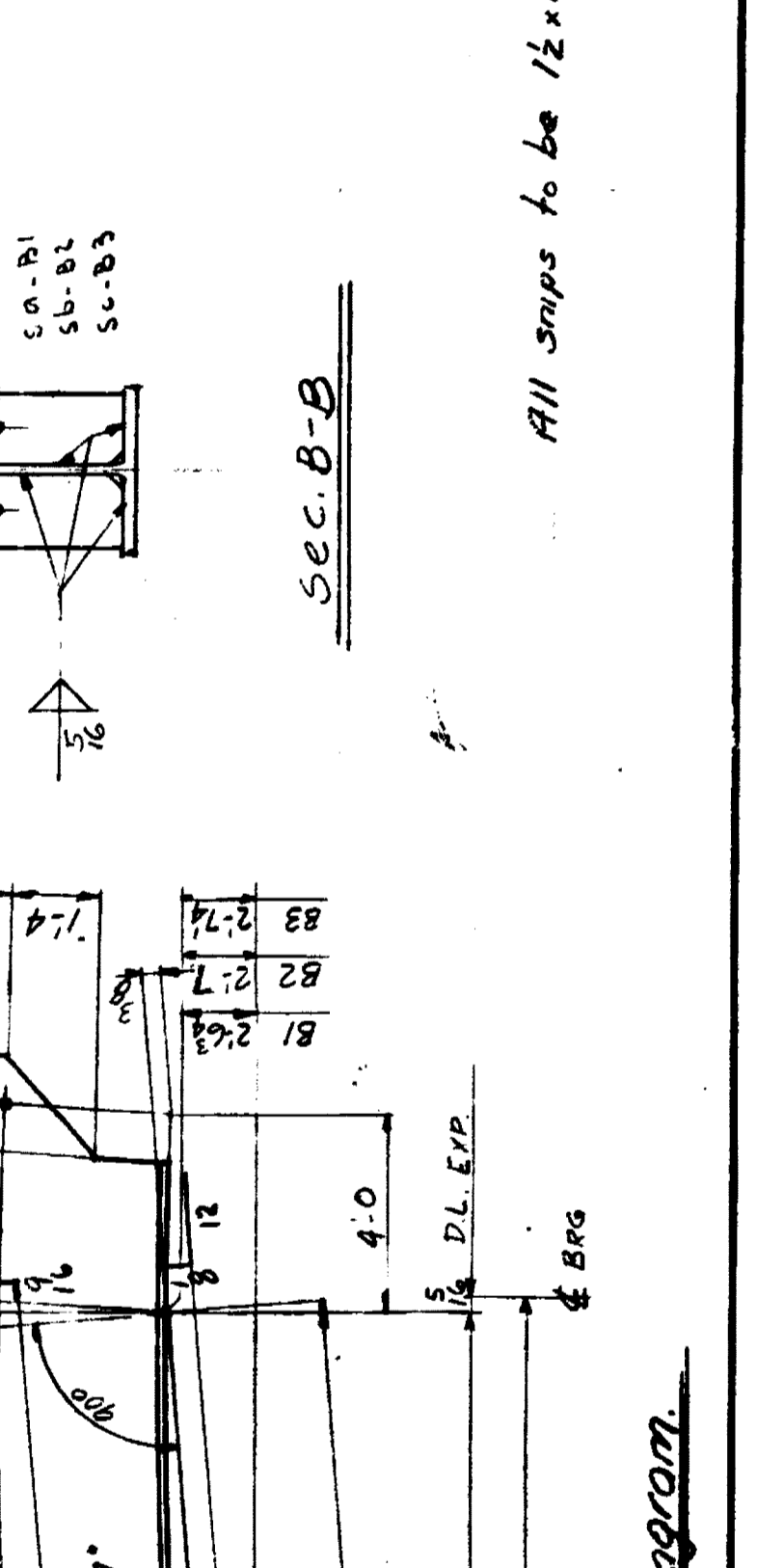
MICHIGAN DEPT. OF STATE HIGHWAYS
 BRIDGE #01 OF 8722K
 EVERGREEN ROAD OVER I-96
 (J. FRANKS FREEWAY)
 OBTOWN, (WAYNE COUNTY) MICHIGAN
 Beam # Span # 3
 LINES B, C, & D
 American Bridge
 Division of
 United States Steel
 FABRICATION DRAWING TO: Gary #2
 DRAWING MADE BY: Gary #2
 CHECKED BY: ALL
 IN CHARGE OF: AUGERSTINE
 SHEET NO. 210
 K-2828



GEN. NOTES
 All steel shall be handled carefully and shall be kept free and clean of all foreign materials such as grease, oil, chalk marks, dirt, etc.
 All shipping marks shall be made using a steel die.
 The rounding of corners will not be required.

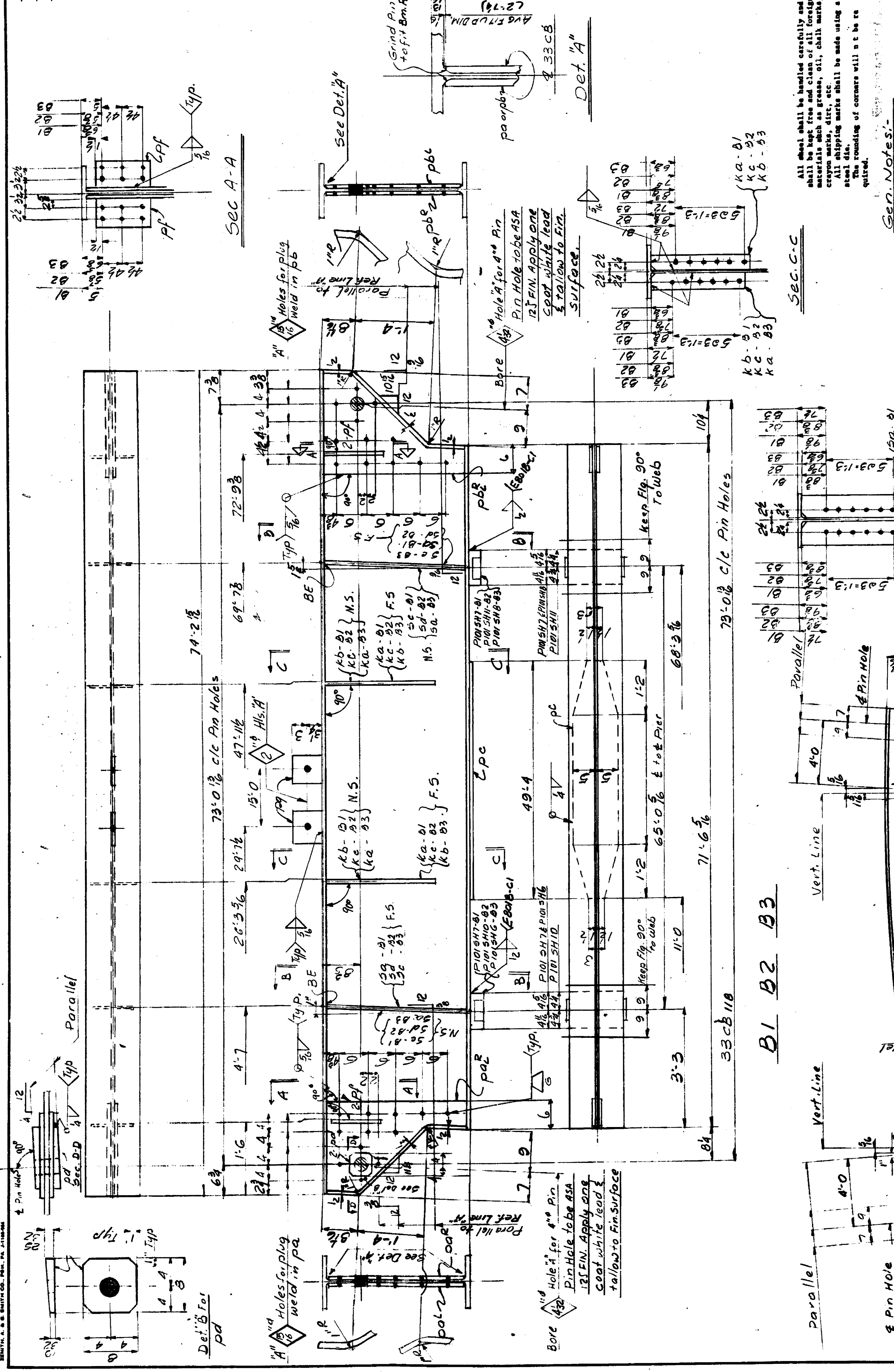
Spec. - Michigan State Specs. - 1967 - for Road & Bridge Construction & Special Provisions.
 Material - ASTM - A474 Mod. (Cor-Ten B) U.N.
 Open Holes - 1 1/2" U.N.
 Welding - AWS & Special Provisions.
 Use E70XX Low Hydrogen Electrode or E70XX or E70XX Mod. or E70XX Mod. U.N.
 Paint - No
 Camber: number is to be measured with the beam lying on its side. Allowable Camber Tolerance is ± 4 Heat is to be used if necessary to assure camber permanency.

Open Holes are for High Strength Structural Bolts U.N. "A"
 B, E SECTIONS BEARING END

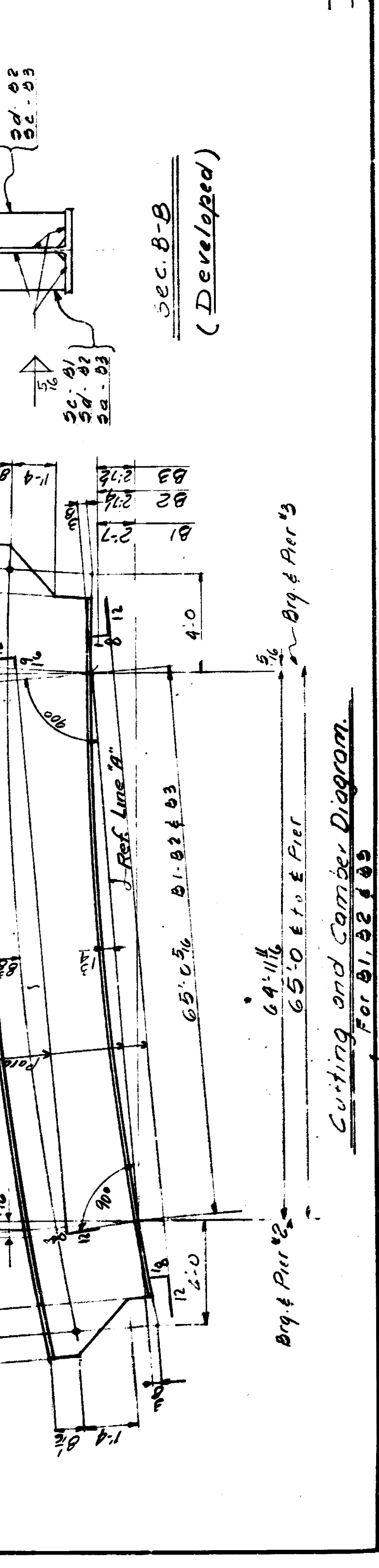


All snips to be 12x12
 Cutting and Camber Diagram

ITEM NO.	QTY.	DESCRIPTION	UNIT	MATERIAL		REMARKS	ORDER NO.
				TYPE	SIZE		
1	1	PL 1/2	10	PL	74		
2	1	PL 1/2	10	PL	74		
3	1	PL 1/2	10	PL	74		
4	1	PL 1/2	10	PL	74		
5	1	PL 1/2	10	PL	74		
6	1	PL 1/2	10	PL	74		
7	1	PL 1/2	10	PL	74		
8	1	PL 1/2	10	PL	74		
9	1	PL 1/2	10	PL	74		
10	1	PL 1/2	10	PL	74		
11	1	PL 1/2	10	PL	74		
12	1	PL 1/2	10	PL	74		
13	1	PL 1/2	10	PL	74		
14	1	PL 1/2	10	PL	74		
15	1	PL 1/2	10	PL	74		
16	1	PL 1/2	10	PL	74		
17	1	PL 1/2	10	PL	74		
18	1	PL 1/2	10	PL	74		
19	1	PL 1/2	10	PL	74		
20	1	PL 1/2	10	PL	74		
21	1	PL 1/2	10	PL	74		
22	1	PL 1/2	10	PL	74		
23	1	PL 1/2	10	PL	74		
24	1	PL 1/2	10	PL	74		
25	1	PL 1/2	10	PL	74		
26	1	PL 1/2	10	PL	74		
27	1	PL 1/2	10	PL	74		
28	1	PL 1/2	10	PL	74		
29	1	PL 1/2	10	PL	74		
30	1	PL 1/2	10	PL	74		
31	1	PL 1/2	10	PL	74		
32	1	PL 1/2	10	PL	74		
33	1	PL 1/2	10	PL	74		
34	1	PL 1/2	10	PL	74		
35	1	PL 1/2	10	PL	74		
36	1	PL 1/2	10	PL	74		
37	1	PL 1/2	10	PL	74		
38	1	PL 1/2	10	PL	74		
39	1	PL 1/2	10	PL	74		
40	1	PL 1/2	10	PL	74		
41	1	PL 1/2	10	PL	74		
42	1	PL 1/2	10	PL	74		
43	1	PL 1/2	10	PL	74		
44	1	PL 1/2	10	PL	74		
45	1	PL 1/2	10	PL	74		
46	1	PL 1/2	10	PL	74		
47	1	PL 1/2	10	PL	74		
48	1	PL 1/2	10	PL	74		
49	1	PL 1/2	10	PL	74		
50	1	PL 1/2	10	PL	74		
51	1	PL 1/2	10	PL	74		
52	1	PL 1/2	10	PL	74		
53	1	PL 1/2	10	PL	74		
54	1	PL 1/2	10	PL	74		
55	1	PL 1/2	10	PL	74		
56	1	PL 1/2	10	PL	74		
57	1	PL 1/2	10	PL	74		
58	1	PL 1/2	10	PL	74		
59	1	PL 1/2	10	PL	74		
60	1	PL 1/2	10	PL	74		
61	1	PL 1/2	10	PL	74		
62	1	PL 1/2	10	PL	74		
63	1	PL 1/2	10	PL	74		
64	1	PL 1/2	10	PL	74		
65	1	PL 1/2	10	PL	74		
66	1	PL 1/2	10	PL	74		
67	1	PL 1/2	10	PL	74		
68	1	PL 1/2	10	PL	74		
69	1	PL 1/2	10	PL	74		
70	1	PL 1/2	10	PL	74		
71	1	PL 1/2	10	PL	74		
72	1	PL 1/2	10	PL	74		
73	1	PL 1/2	10	PL	74		
74	1	PL 1/2	10	PL	74		

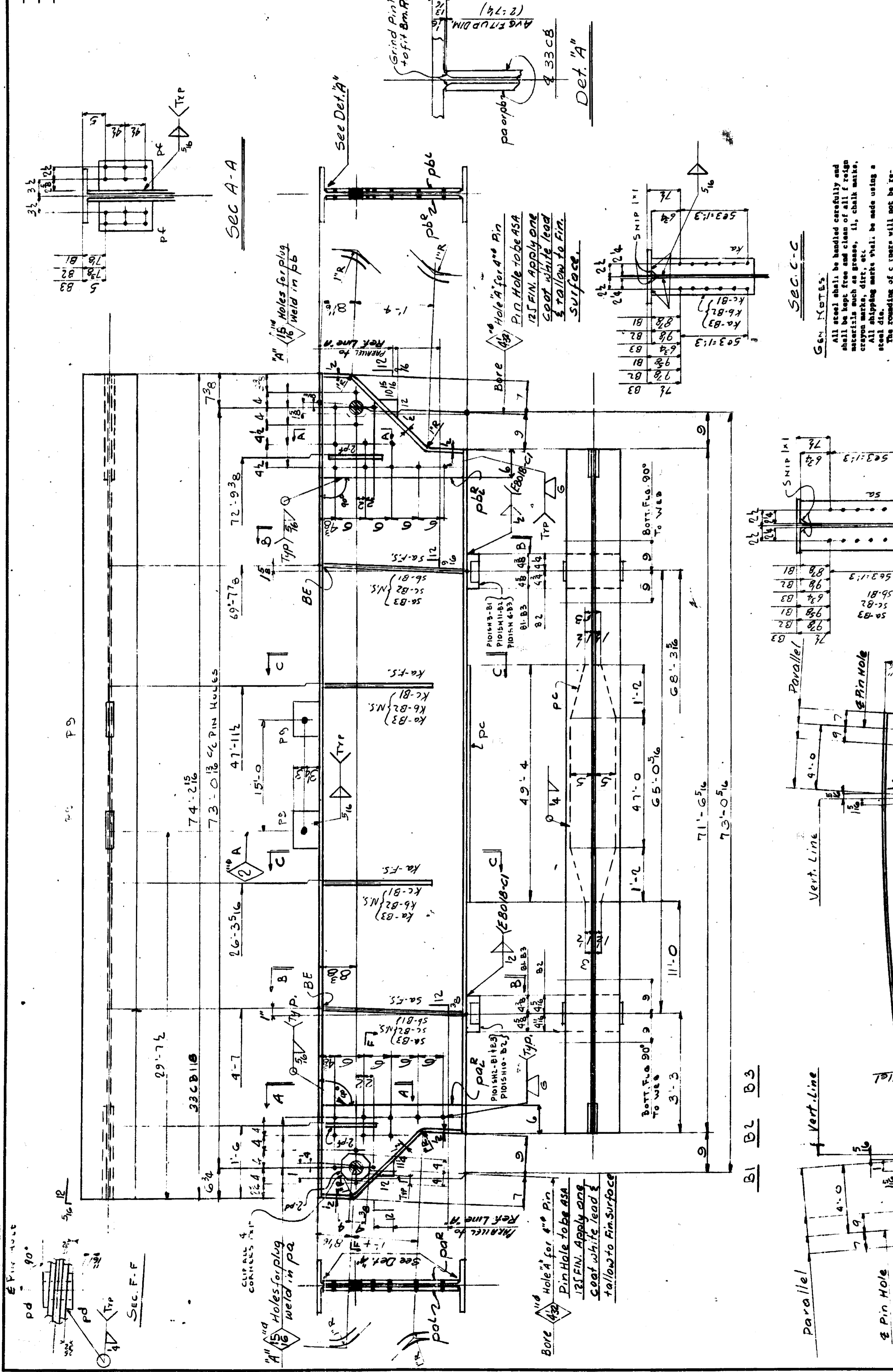


Gen. Notes:
 Spec. Michigan State Specs. 1967 for Road & Bridge Construction & Special Provisions.
 Material: ASTM-A441 Mod. (Cor-Ten B) U.N.
 Open Holes: 3/4" U.N.
 Welding: AWS & Special Provisions
 Use E70XX Low Hydrogen Electrode E70XX or E70XX Flux & Electrode
 Paint: No
 Camber: Camber is to be measured with the beam lying on its side. Allowable Camber Tolerance is 1/4" Heat is to be used if necessary to assure camber permanency.
 Open Holes are for High Strength Structural Bolts U.N. 4" Allowance on sticks to be 1/2" it.



Section A-A
 Section B-B (Developed)
 Section C-C
 B1 B2 B3
 Cutting and Camber Diagram.
 For B1, B2 & B3

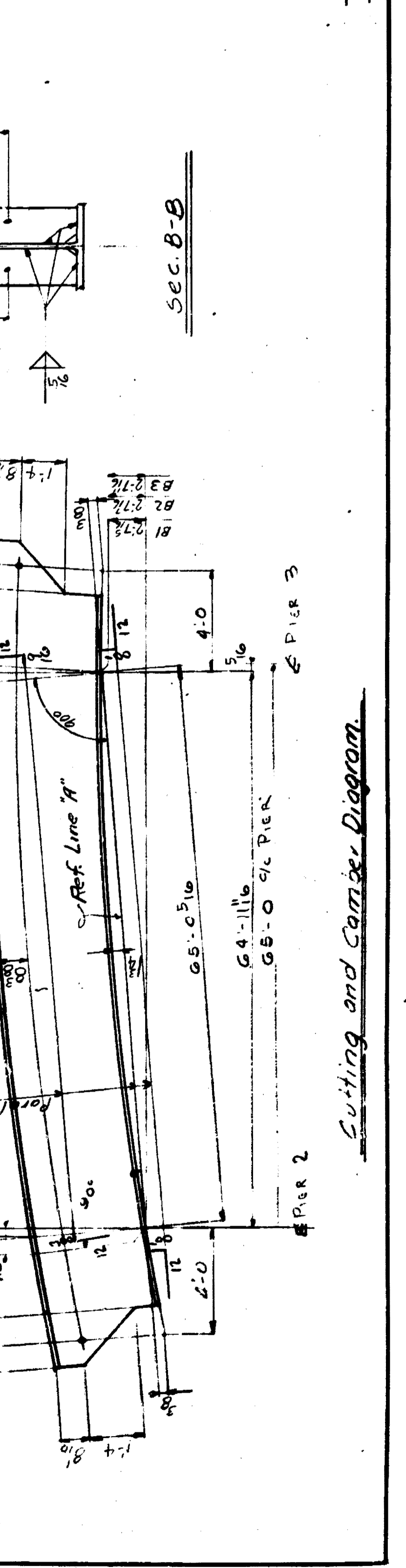
ITEM NO.	DESCRIPTION	QUANTITY	UNIT	REMARKS	DATE
1	Beam	1	EA		
2	Beam	1	EA		
3	Beam	1	EA		
4	Beam	1	EA		
5	Beam	1	EA		
6	Beam	1	EA		
7	Beam	1	EA		
8	Beam	1	EA		
9	Beam	1	EA		
10	Beam	1	EA		
11	Beam	1	EA		
12	Beam	1	EA		
13	Beam	1	EA		
14	Beam	1	EA		
15	Beam	1	EA		
16	Beam	1	EA		
17	Beam	1	EA		
18	Beam	1	EA		
19	Beam	1	EA		
20	Beam	1	EA		
21	Beam	1	EA		
22	Beam	1	EA		
23	Beam	1	EA		
24	Beam	1	EA		
25	Beam	1	EA		
26	Beam	1	EA		
27	Beam	1	EA		
28	Beam	1	EA		
29	Beam	1	EA		
30	Beam	1	EA		
31	Beam	1	EA		
32	Beam	1	EA		
33	Beam	1	EA		
34	Beam	1	EA		
35	Beam	1	EA		
36	Beam	1	EA		
37	Beam	1	EA		
38	Beam	1	EA		
39	Beam	1	EA		
40	Beam	1	EA		
41	Beam	1	EA		
42	Beam	1	EA		
43	Beam	1	EA		
44	Beam	1	EA		
45	Beam	1	EA		
46	Beam	1	EA		
47	Beam	1	EA		
48	Beam	1	EA		
49	Beam	1	EA		
50	Beam	1	EA		
51	Beam	1	EA		
52	Beam	1	EA		
53	Beam	1	EA		
54	Beam	1	EA		
55	Beam	1	EA		
56	Beam	1	EA		
57	Beam	1	EA		
58	Beam	1	EA		
59	Beam	1	EA		
60	Beam	1	EA		
61	Beam	1	EA		
62	Beam	1	EA		
63	Beam	1	EA		
64	Beam	1	EA		
65	Beam	1	EA		
66	Beam	1	EA		
67	Beam	1	EA		
68	Beam	1	EA		
69	Beam	1	EA		
70	Beam	1	EA		
71	Beam	1	EA		
72	Beam	1	EA		
73	Beam	1	EA		
74	Beam	1	EA		
75	Beam	1	EA		
76	Beam	1	EA		
77	Beam	1	EA		
78	Beam	1	EA		
79	Beam	1	EA		
80	Beam	1	EA		
81	Beam	1	EA		
82	Beam	1	EA		
83	Beam	1	EA		
84	Beam	1	EA		
85	Beam	1	EA		
86	Beam	1	EA		
87	Beam	1	EA		
88	Beam	1	EA		
89	Beam	1	EA		
90	Beam	1	EA		
91	Beam	1	EA		
92	Beam	1	EA		
93	Beam	1	EA		
94	Beam	1	EA		
95	Beam	1	EA		
96	Beam	1	EA		
97	Beam	1	EA		
98	Beam	1	EA		
99	Beam	1	EA		
100	Beam	1	EA		



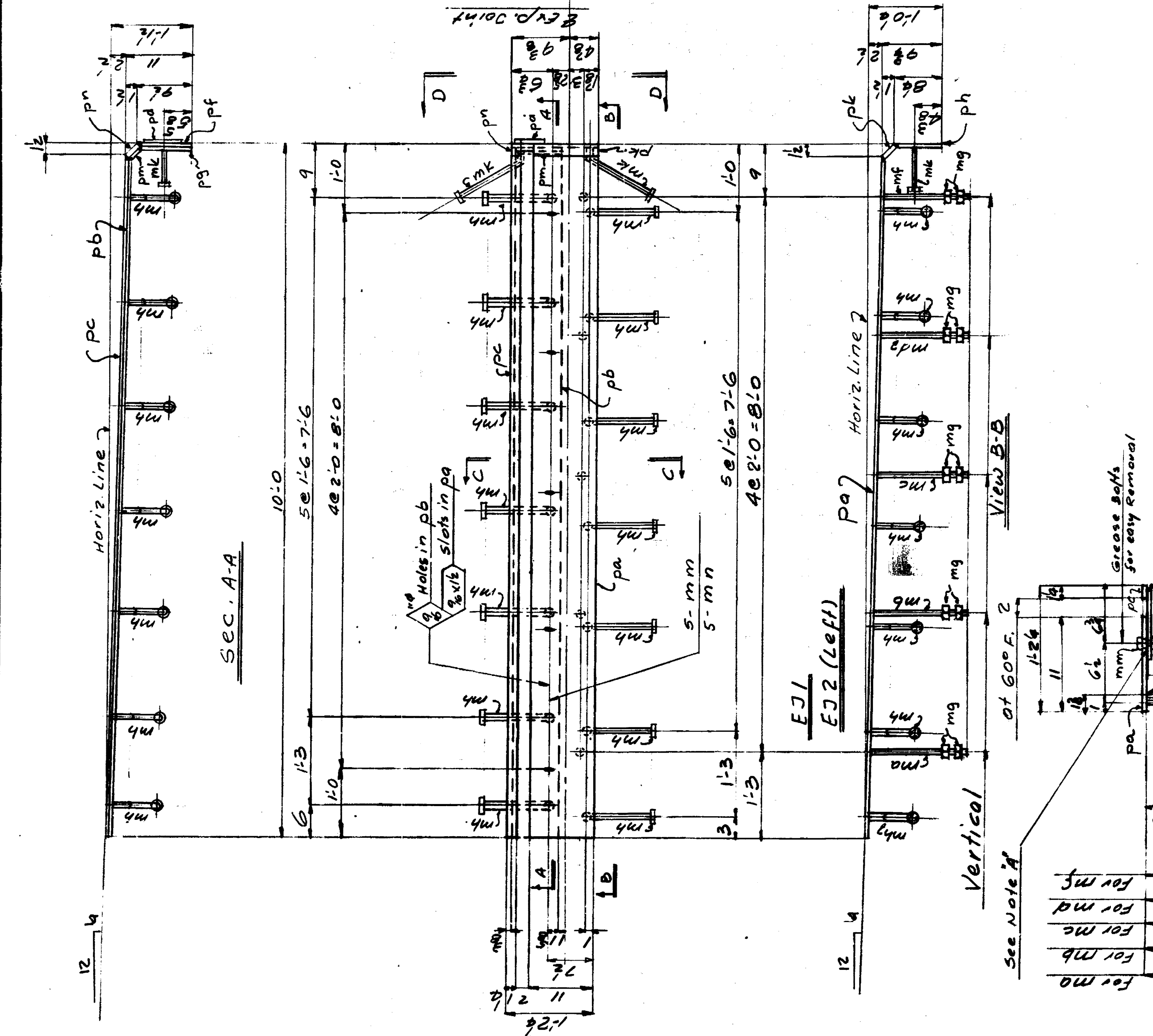
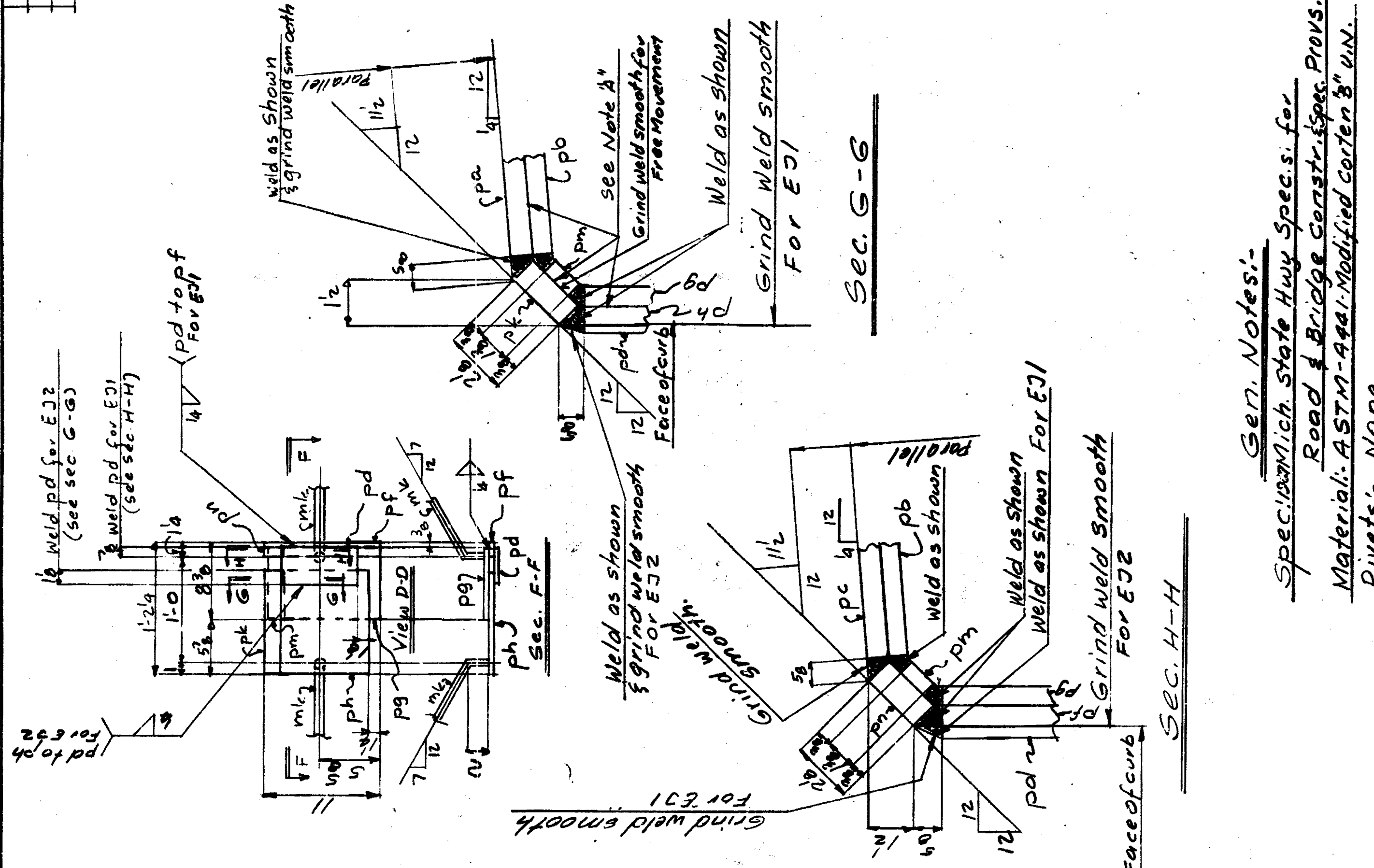
MICHIGAN DEPT. OF STATE HIGHWAYS BRIDGE NO. OF 8222X (GREENSBORO ROAD OVER I-96 (GREENSBORO ROAD) DETROIT, (WAYNE COUNTY) MICHIGAN	Beam & Span # 3 American Bridge Division of United States Steel Lines U.S.S.	PROJECT APPROVED BY: Gary DRAWING MADE BY: Gary #2 MADE BY: Gary #2 CHECKED BY: Gary #2 IN CHARGE OF: Augerline	SHEET NO. 212 OF 212
--	--	---	-------------------------

GEN. NOTES:
 All steel shall be handled carefully and shall be kept free and clean of all foreign materials such as grease, oil, chalk marks, crayon marks, dirt, etc.
 The rounding of corners will not be required.

SEC. C-C
 Spec. - Michigan State Spec. 1967 For Road & Bridge Construction & Special Provisions.
 Material: ASTM-A441 Mod. (Cor-Ten B) UN.
 Open Holes: 1/2" UN.
 Welding: AWS & Special P.C. 5.025
 Use E70XX Low Hydrogen Electrode.
 Paint: - NO
 Camber: Camber is to be measured with the beam lying on its side. Allowable Camber Tolerance is ± 4 Heat is to be used if necessary to assure camber permanency.
 Open Holes are for High Strength Structural Bolts U.S.S. 4"



ITEM NO.	QUANTITY	DESCRIPTION	UNIT	REMARKS	DATE
1	1	Expansion Joint			
2	1	Expansion Splice			
3	2	PL 11			
4	2	PL 12			
5	2	PL 13			
6	2	PL 14			
7	2	PL 15			
8	2	PL 16			
9	2	PL 17			
10	2	PL 18			
11	2	PL 19			
12	2	PL 20			
13	2	PL 21			
14	2	PL 22			
15	2	PL 23			
16	2	PL 24			
17	2	PL 25			
18	2	PL 26			
19	2	PL 27			
20	2	PL 28			
21	2	PL 29			
22	2	PL 30			
23	2	PL 31			
24	2	PL 32			
25	2	PL 33			
26	2	PL 34			
27	2	PL 35			
28	2	PL 36			
29	2	PL 37			
30	2	PL 38			
31	2	PL 39			
32	2	PL 40			
33	2	PL 41			
34	2	PL 42			
35	2	PL 43			
36	2	PL 44			
37	2	PL 45			
38	2	PL 46			
39	2	PL 47			
40	2	PL 48			
41	2	PL 49			
42	2	PL 50			
43	2	PL 51			
44	2	PL 52			
45	2	PL 53			
46	2	PL 54			
47	2	PL 55			
48	2	PL 56			
49	2	PL 57			
50	2	PL 58			
51	2	PL 59			
52	2	PL 60			
53	2	PL 61			
54	2	PL 62			
55	2	PL 63			
56	2	PL 64			
57	2	PL 65			
58	2	PL 66			
59	2	PL 67			
60	2	PL 68			
61	2	PL 69			
62	2	PL 70			



MICHIGAN DEPT. OF STATE HIGHWAYS
BRIDGE NO. 101 OF 8212K
ENERGREEN ROAD OVER I-96
(JEFFERES FREEWAY)
DETROIT, (WAYNE COUNTY) MICHIGAN

Expansion Joint

USS American Bridge
Division of United States Steel Corporation

FABRICATION DRAWING NO. Gary
DRAWING MADE BY Gary #2
CHECKED BY M. J. AUGUSTINE
DATE 10/15/58
SCALE 1/4" = 1'-0"

ORDER NO. 1K2028
SHEET NO. 302

Gen. Notes:-
Spec. Mich. State Hwy Specs. for
Road & Bridge Constr. Spec. Provs.
Material: ASTM-A991-Modified carbon 3" dia. rivets.
Rivets: NONE
Open Holes: As Noted
Welding: Yes, AWS. Spec. for welded
Hwy & Railway Bridges
Use E6018-C1 Electrode
Paint: None
Shop Contact Surface: NO

Note A
Coat this surface with
cut-back asphalt RC-210 full length
in the shop before
assembling.

All steel shall be handled carefully and
shall be kept free and clean of all foreign
materials such as grease, oil, chalk, mortar,
crayon marks, dirt, etc.
All shipping marks shall be made using a
water-resistant paint.
The mounting of corners will not be re-
