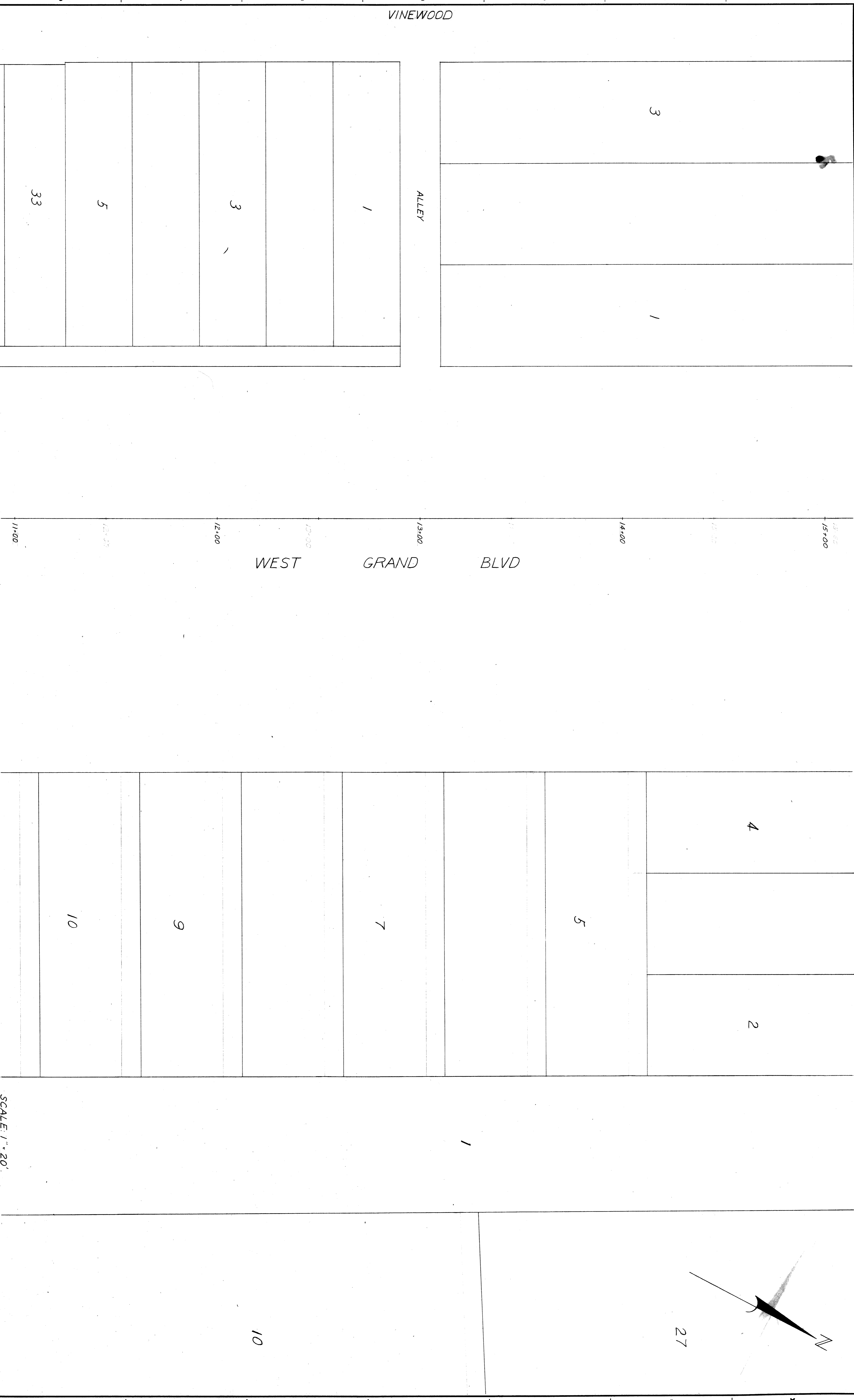


K&E 101-146 1 2 3 4 5 6 7 8 9 10 11



CITY OF DETROIT DEPARTMENT OF PUBLIC WORKS HIGHWAY & EXPRESSWAY DIVISION RAILROAD GRADE SEPARATIONS		WEST JEFFERSON AND WEST GRAND BOULEVARD CROSSING THE WABASH, C & O AND PENN RAILROADS SURVEY PLAN	
DESIGNED BY G.D. MILLZ	DRAWN BY G.D. MILLZ	CHECKED BY D.S.G.	APPROVED: HIGHWAY & EXPRESSWAY ENGINEER
REFERENCE DRAWINGS	TRACKED BY	DATE	SHEET <u> </u> OF <u> </u> SHEETS CONTRACT GS-RD-4 DRWG NO. C-9 DATE
REVISIONS LOCATED BY COORDINATES ON SHEET			