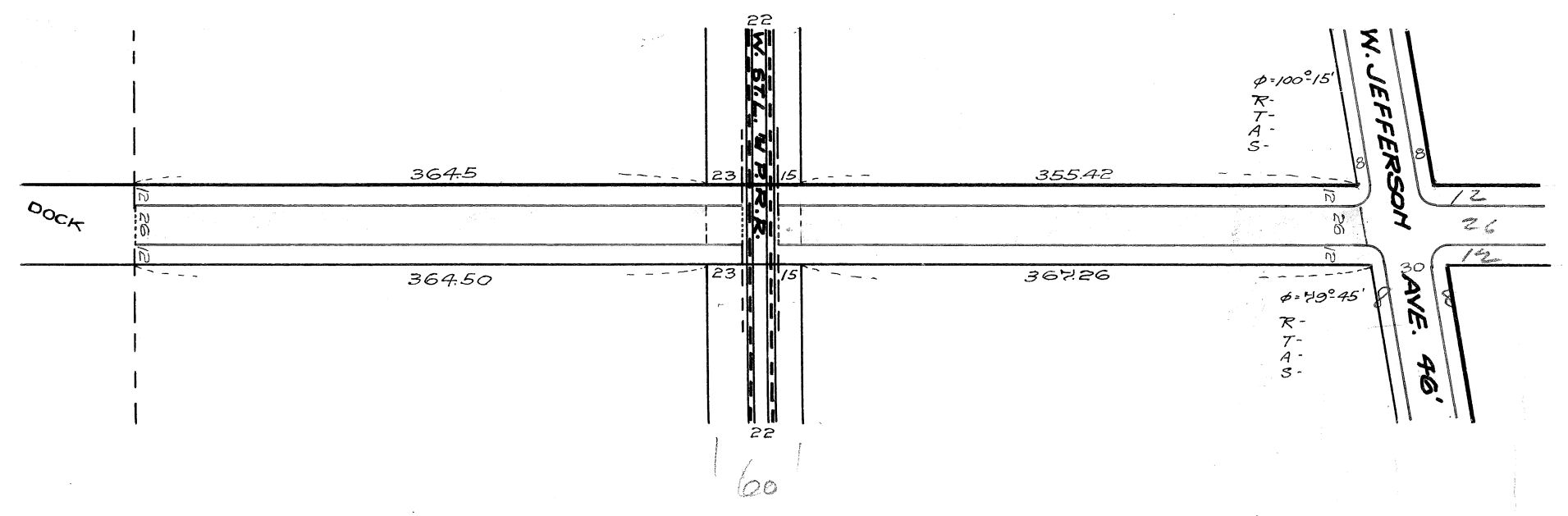


24<sup>TH</sup> ST.  
 From Dock to S.L. Jefferson = 720.20 feet  
 Resurfacing ~ Brick ~ 26ft. wd.



1416  
 FINAL B 251 P 40 Nov 28-1917  
 BRICK = 2072.58 Sq Yds

73.  
 22  
 15  
 ---  
 60

