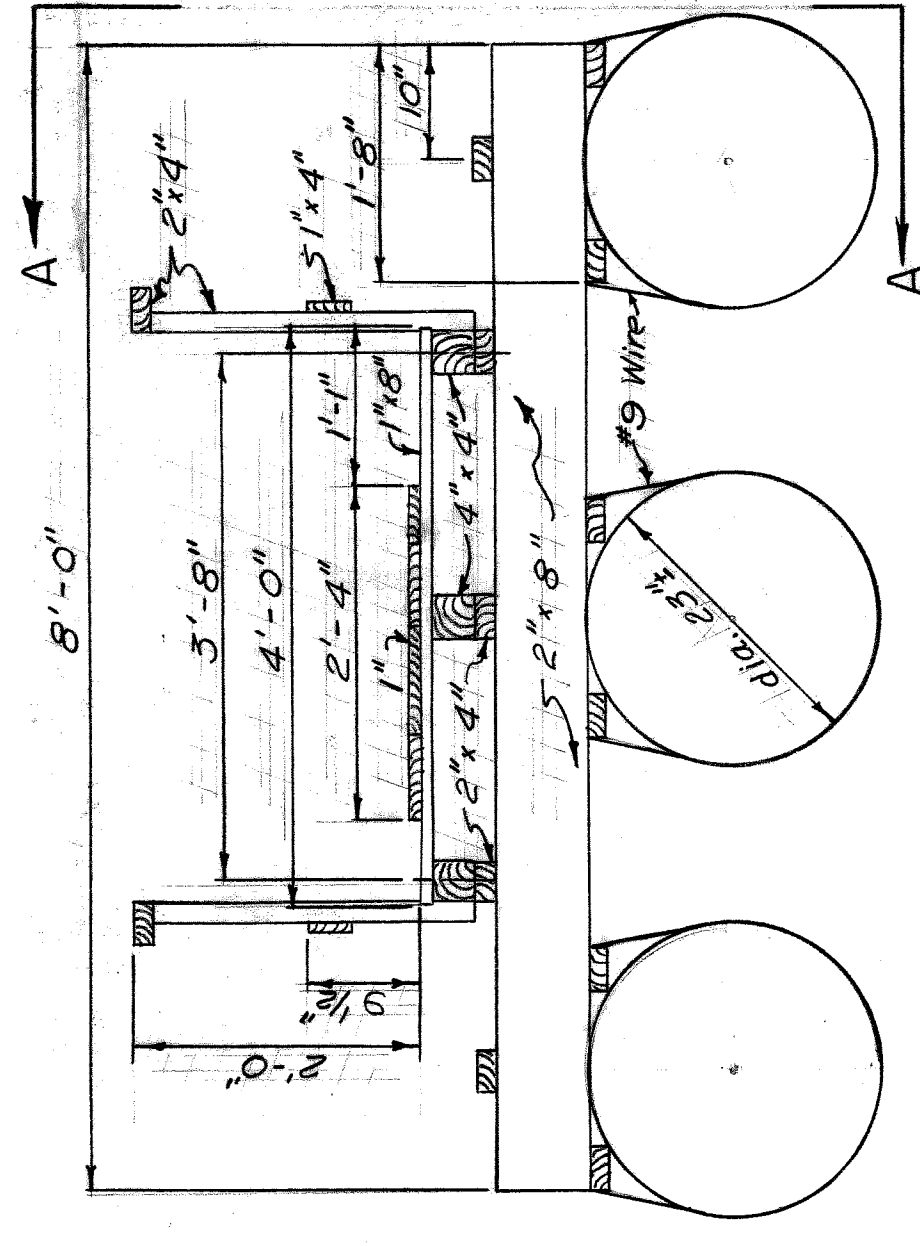
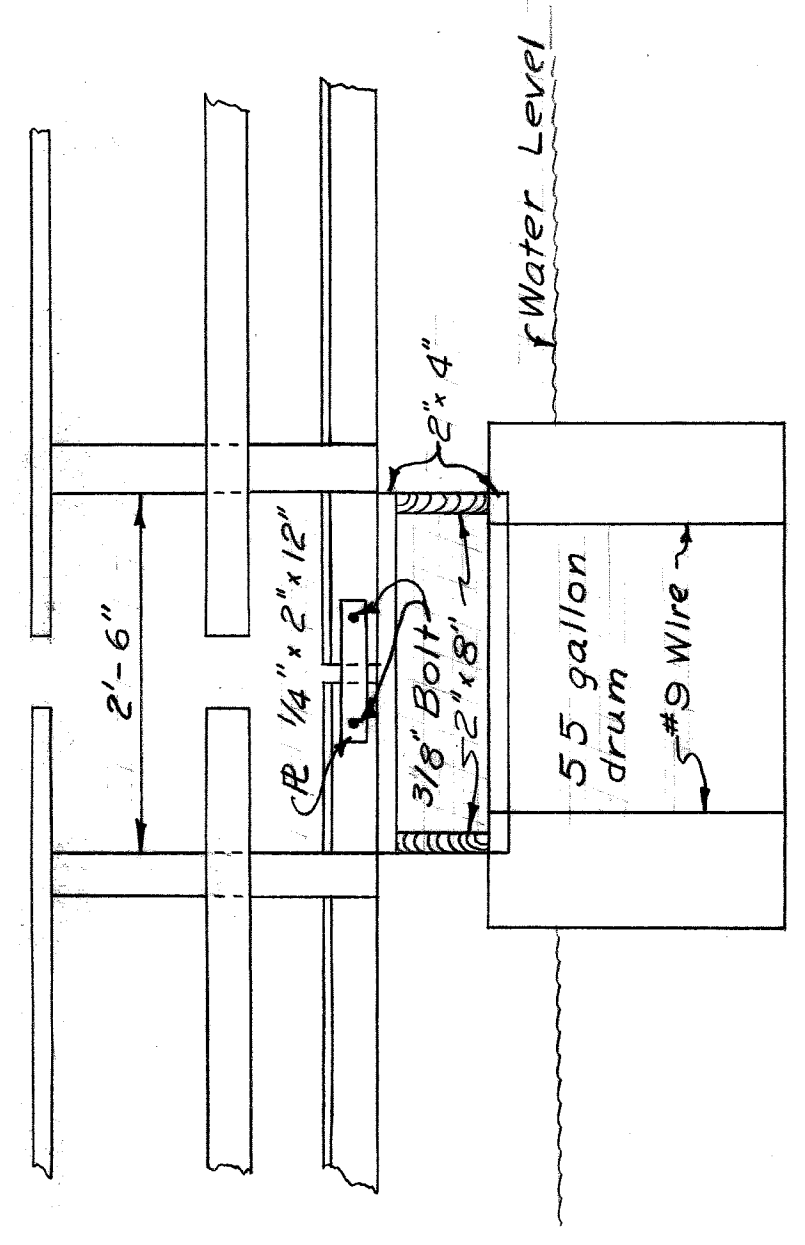


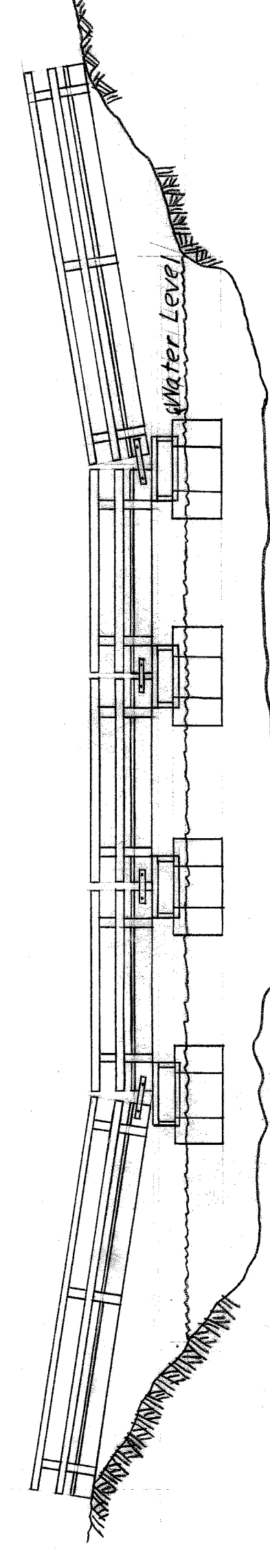
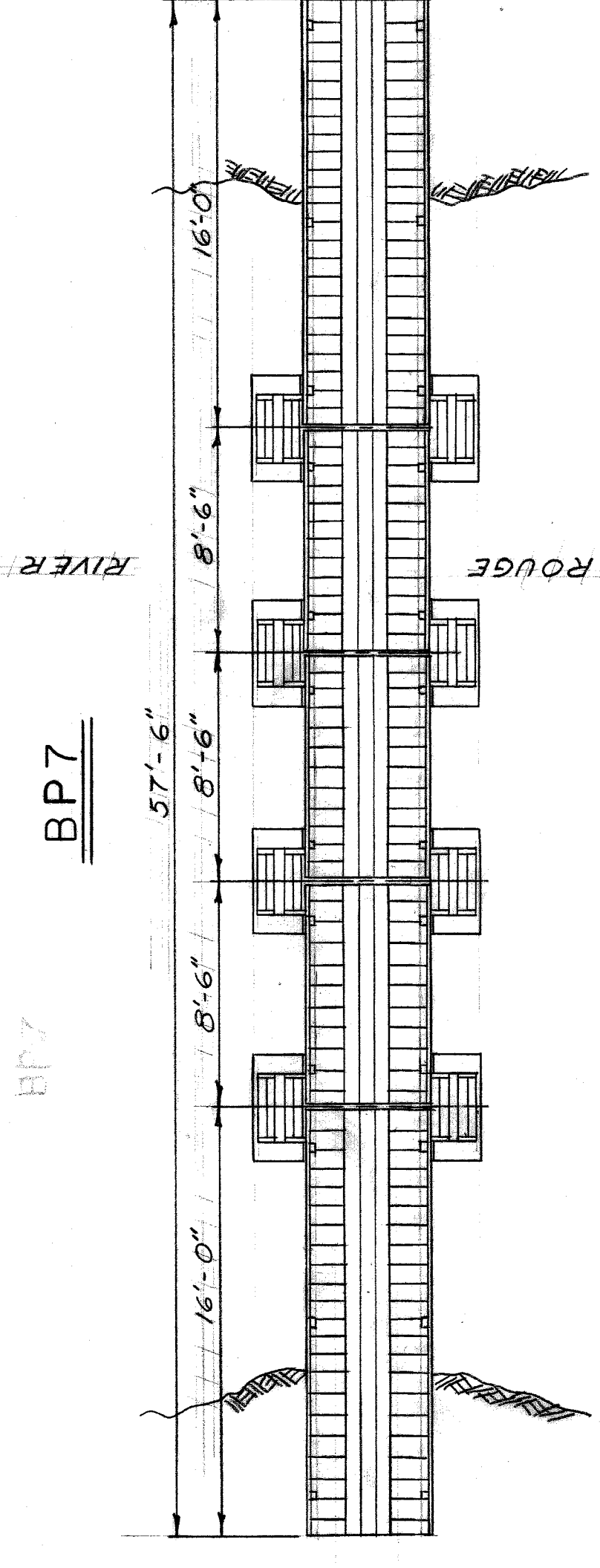
ELEVATION  
SCALE: 3/16"=1'-0"



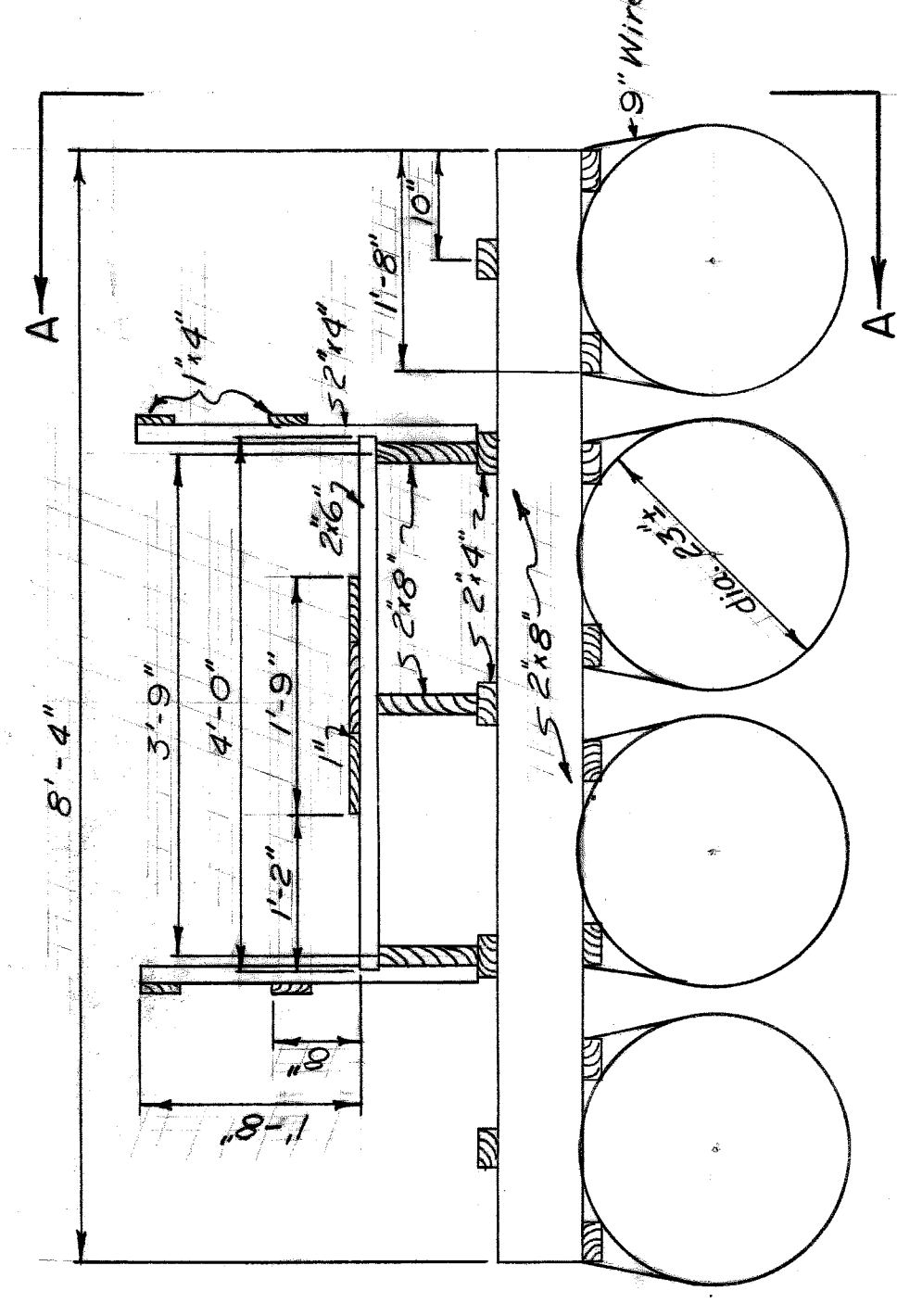
BRIDGE CROSS-SECTION  
SCALE: 3/4"=1'-0"



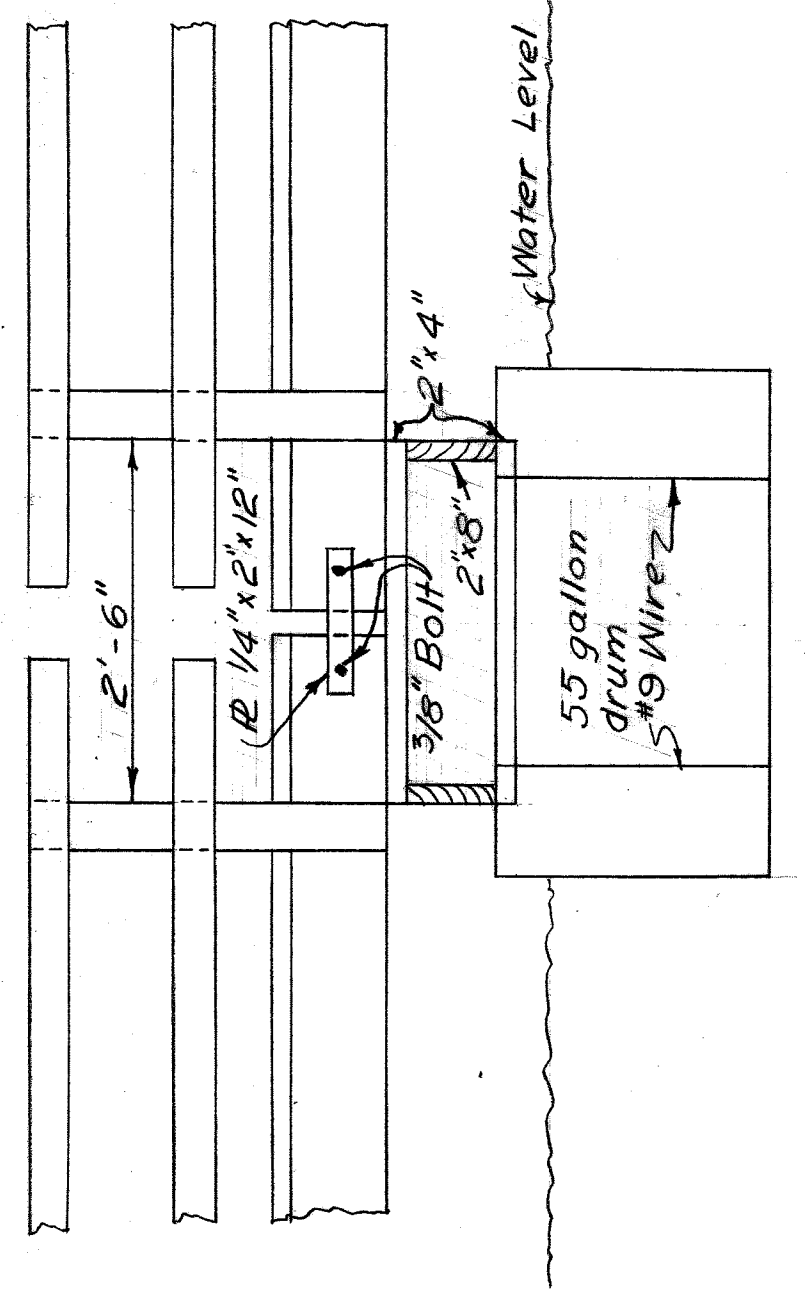
SECTION AA  
SCALE: 3/4"=1'-0"



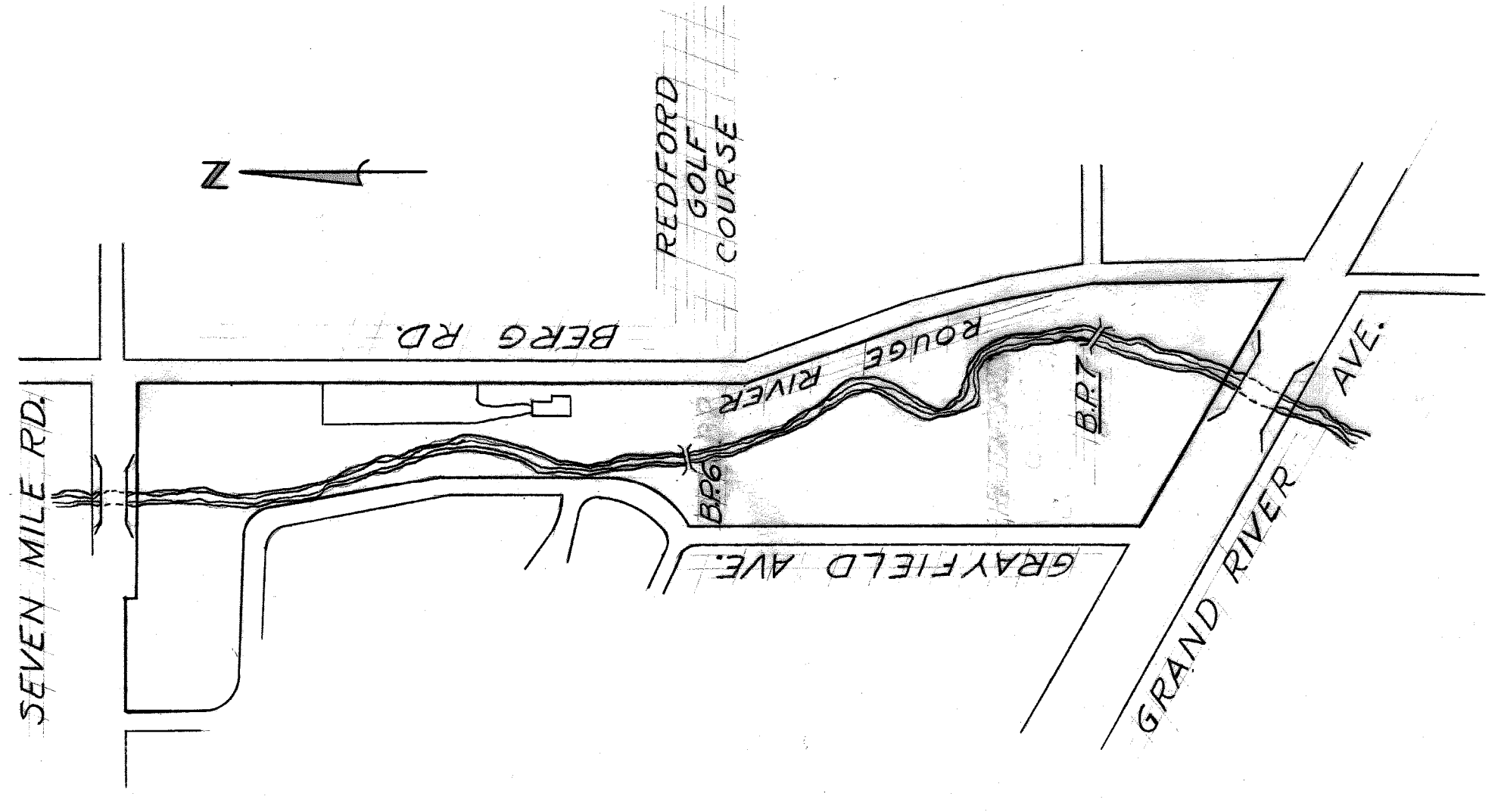
ELEVATION  
SCALE: 3/16"=1'-0"



BRIDGE CROSS-SECTION  
SCALE: 3/4"=1'-0"



SECTION AA  
SCALE: 3/4"=1'-0"



LOCATION PLAN  
NO SCALE

GENERAL NOTES:

All dimensions shown were obtained by field measurement. Where the sections could not be identified accurately, close approximations have been made.

REVISIONS LOCATED BY COORDINATES ON SHEET		DESIGNED BY		APPROVED:		SHEET 1 OF 1 SHEETS	
DESCRIPTION		DRAWN BY H. L. Barnes		H. L. Barnes		JOB No. M-BP6	
DATE		TRACED BY		C. C. L.		DRWG No. C-101	
DATE		CHECKED BY		C. C. L.		DATE 9-28-57	
CITY OF DETROIT DEPARTMENT OF PUBLIC WORKS HIGHWAY & EXPRESSWAY DIVISION BRIDGE MAINTENANCE				REDFORD GOLF COURSE PEDESTRIAN BRIDGES			
GENERAL PLAN AND DETAILS				GENERAL PLAN AND DETAILS			

BP-6

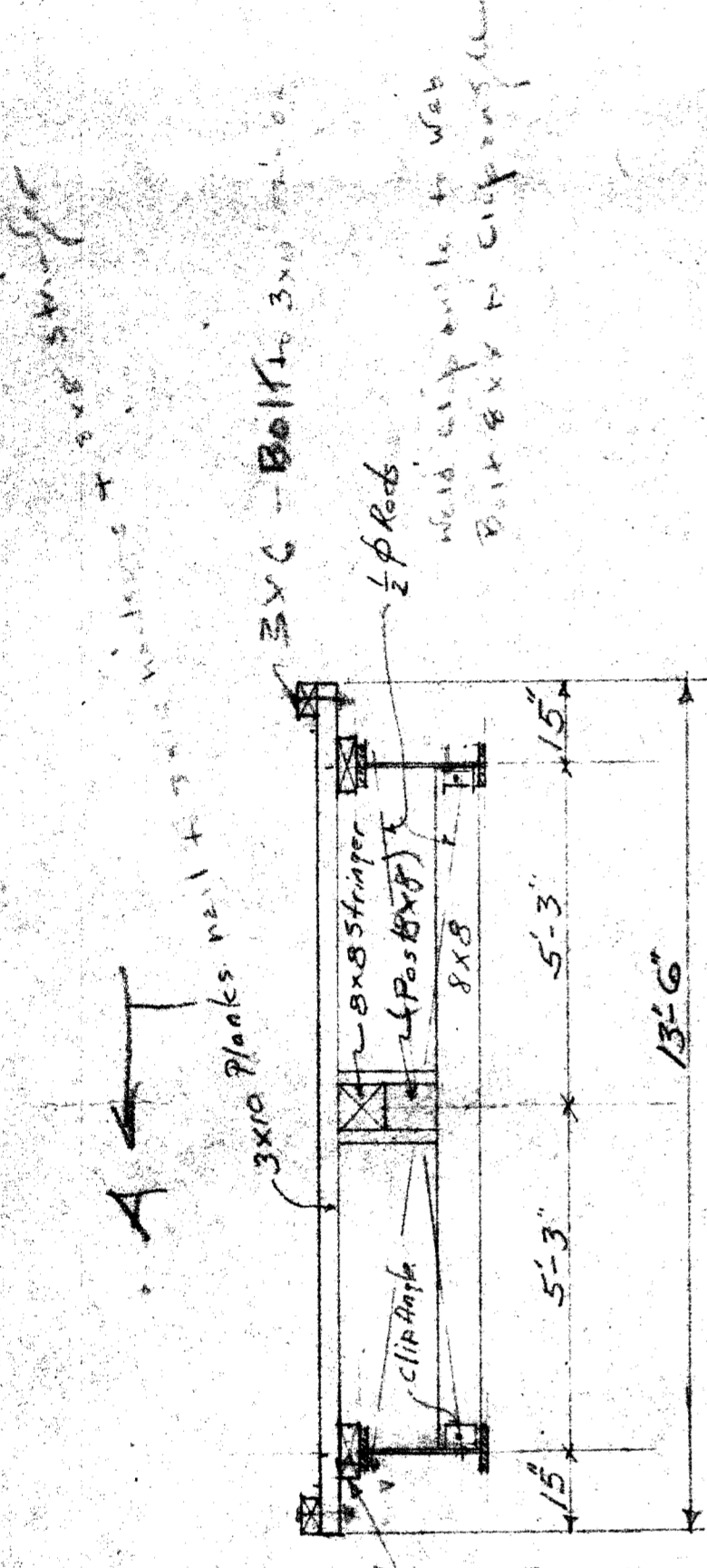
# Redford Golf Course Rouse River Bridge

10/22/59

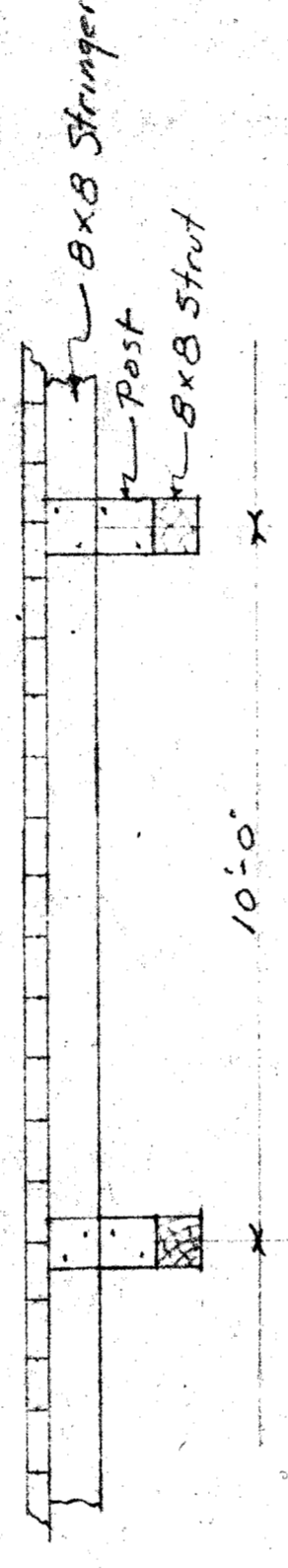
#146

12-16-59  
5 prints

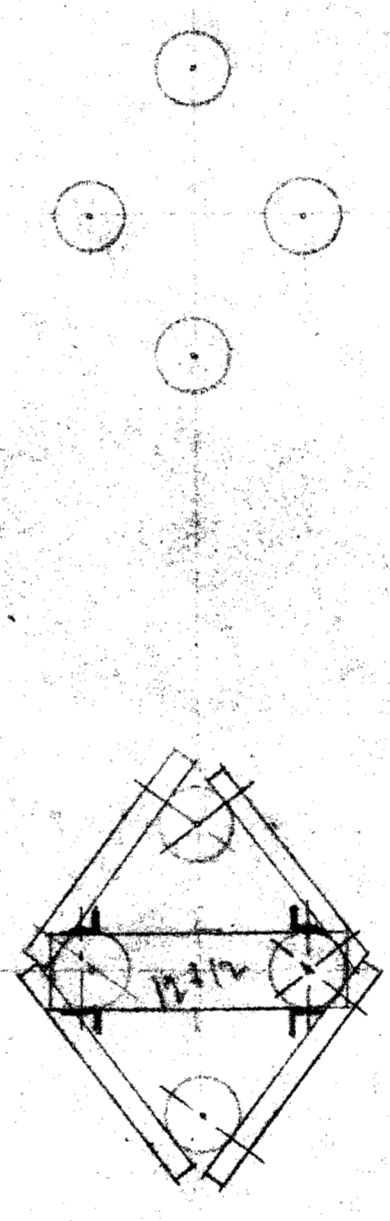
Miles Hammer 132.0 ±  
at 138.0 ±  
Dike water  
high (1991) - see  
main end of  
Sy SW  
at bridge.



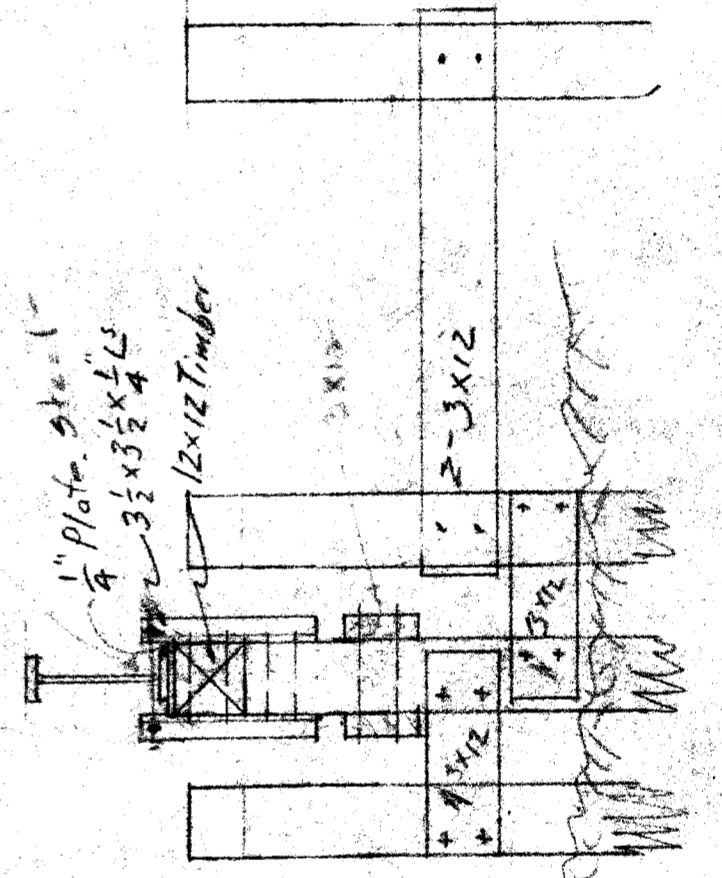
A ←



SECTION A-A



1" Plate Steel  
3/4" x 3 1/2" x 1/4"



PLAN Scale 3/8" = 1'-0"