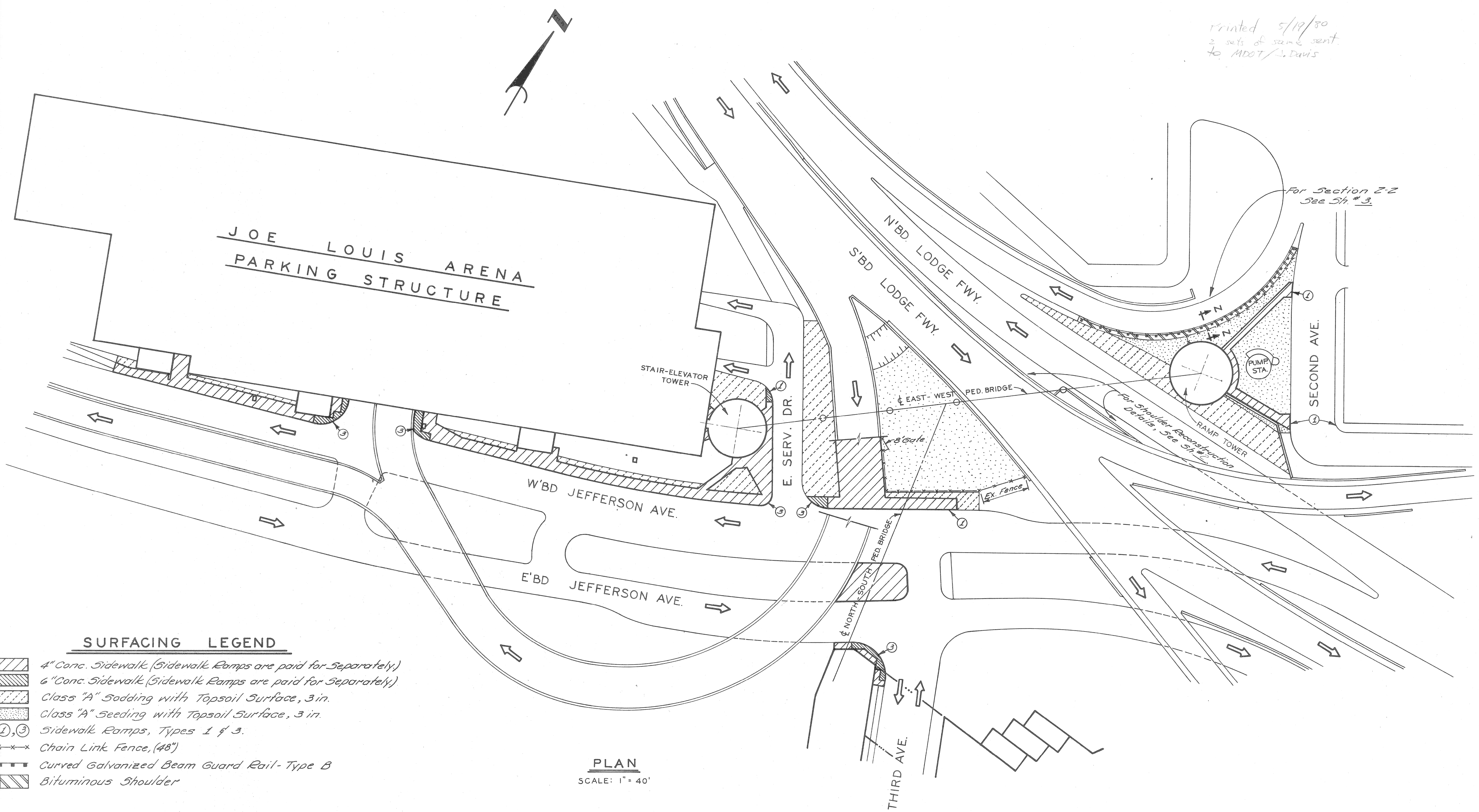


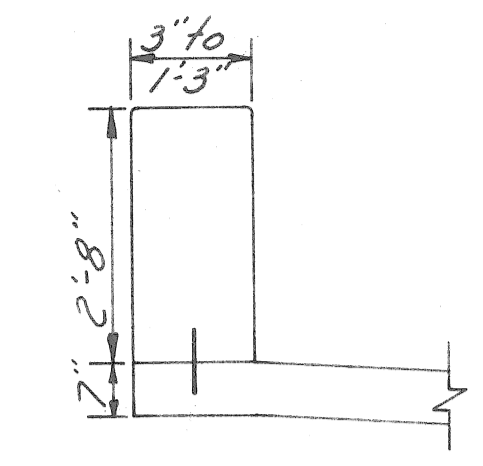
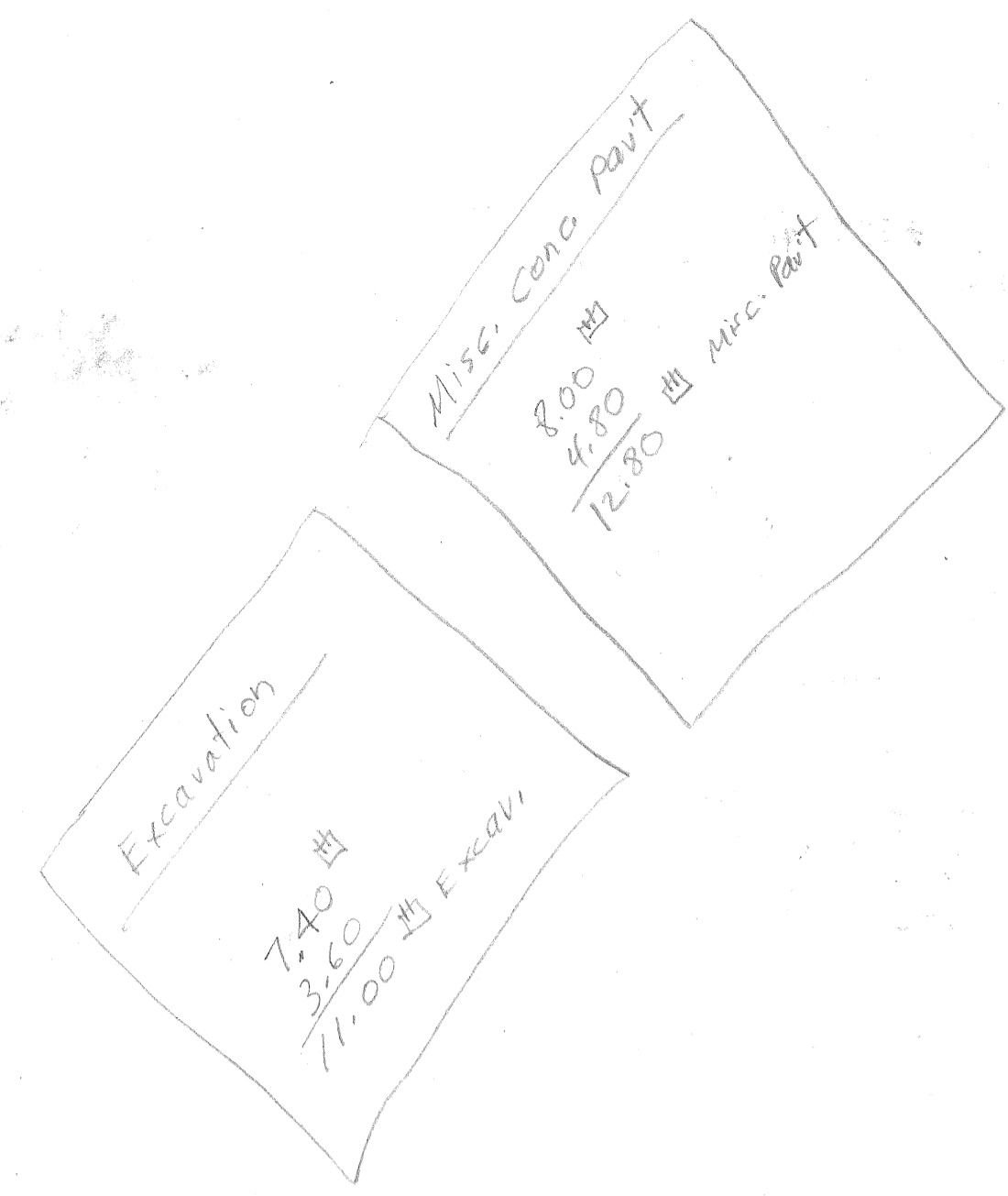
Printed 5/19/80  
2 sets of same sent  
to MDOT / J. Davis



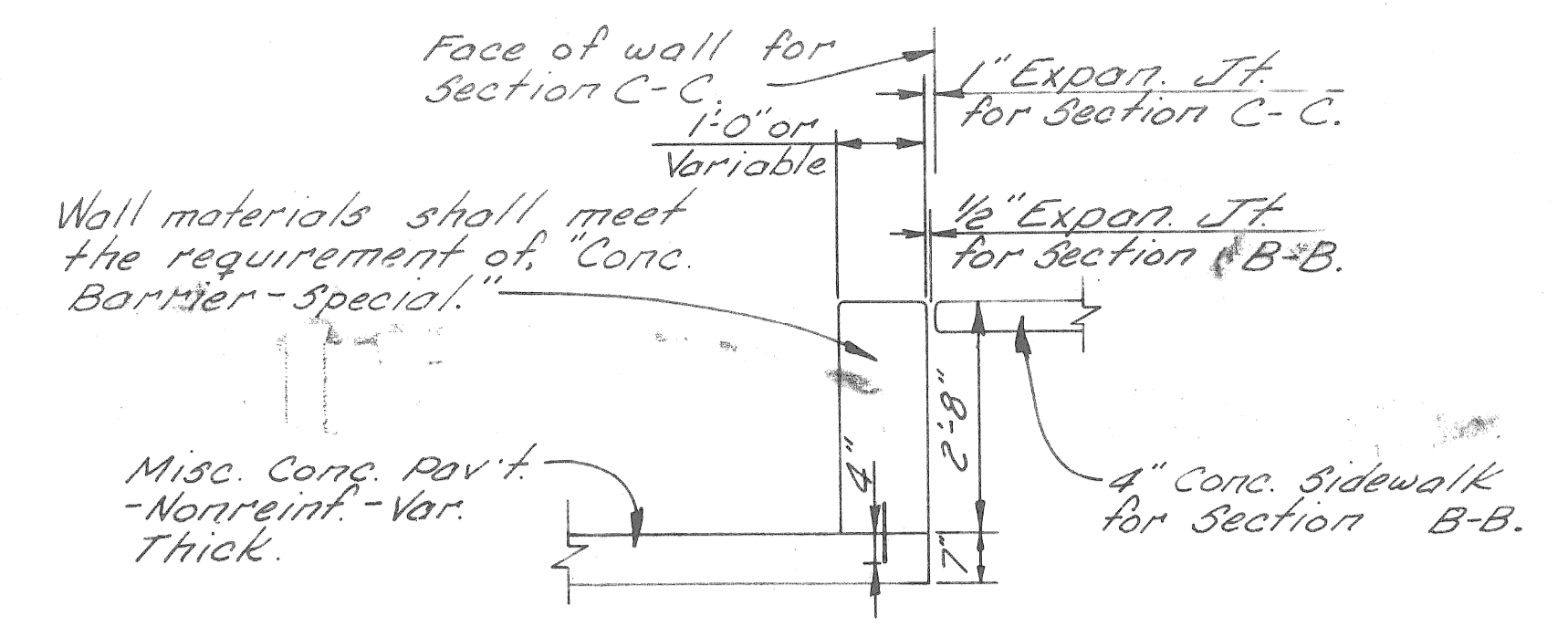
**SURFACING LEGEND**

- 4" Conc. Sidewalk (Sidewalk Ramps are paid for Separately)
- 6" Conc. Sidewalk (Sidewalk Ramps are paid for Separately)
- Class "A" Sodding with Topsoil Surface, 3 in.
- Class "A" Seeding with Topsoil Surface, 3 in.
- ①, ③ Sidewalk Ramps, Types 1 & 3.
- Chain Link Fence, (48")
- Curved Galvanized Beam Guard Rail-Type B
- Bituminous Shoulder

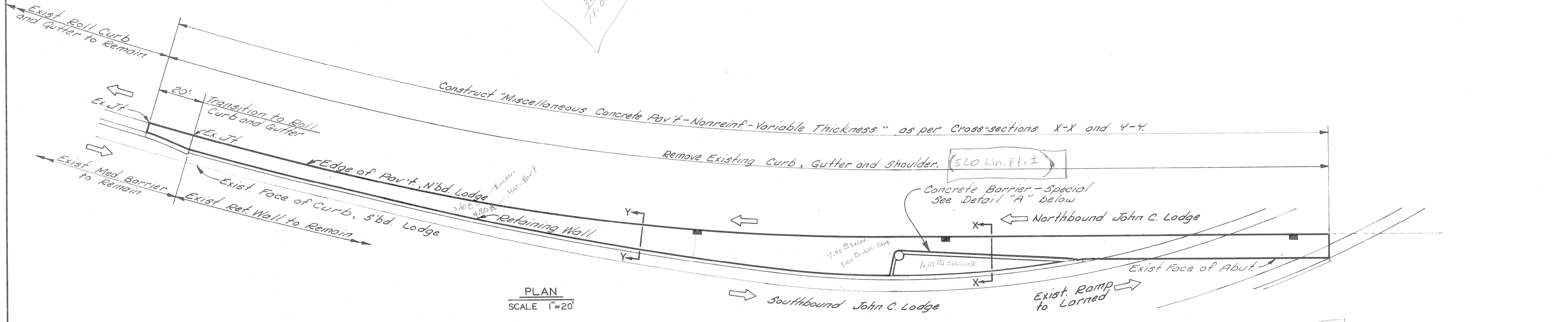
CITY OF DETROIT CITY ENGINEERING DIVISION - EPMD BUREAU OF STREETS AND HIGHWAYS			JOE LOUIS ARENA PEDESTRIAN WALKWAYS			SHEET 1 OF 3 SHEETS
DESIGNED BY DRAWN BY <i>MAB</i> TRACED BY CHECKED BY		APPROVED: ENGINEER OF STREETS HIGHWAY ENGINEER		CONTRACT NO. ASSIGNMENT NO. DATE 5-14-80		
COORD.	DESCRIPTION	DR'N	CK'D	AP'VD	DATE	
REVISIONS LOCATED BY COORDINATES ON SHEET						
1	2	3	4	5	6	7
8	9	10	11			



SECTION A-A  
NO SCALE

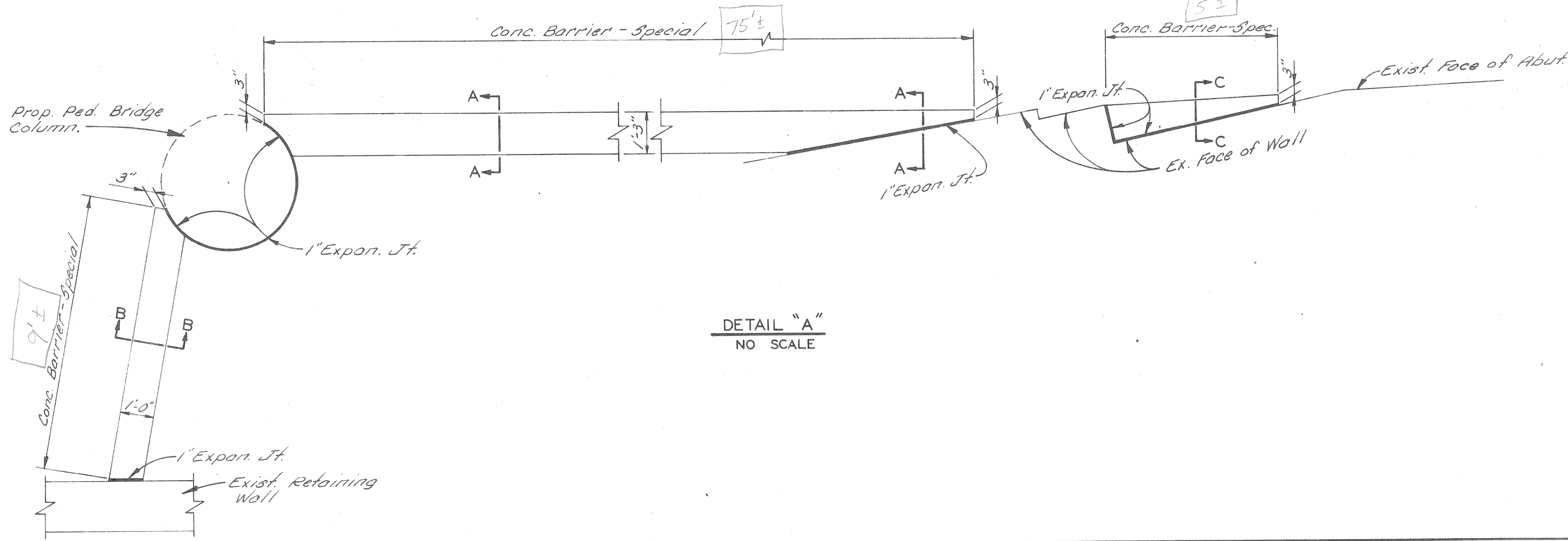


SECTION B-B  
AND  
SECTION C-C  
NO SCALE



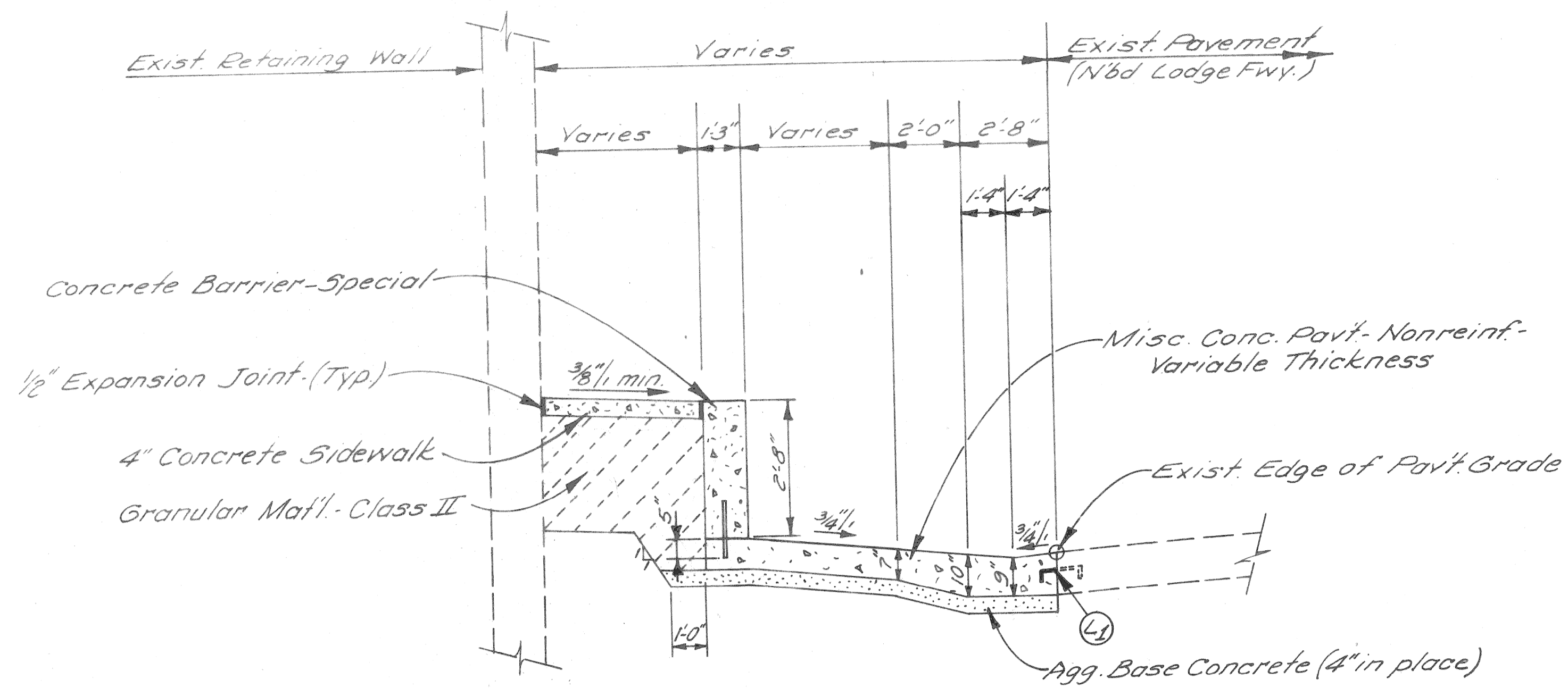
PLAN  
SCALE 1"=20'

- NOTES:
1. Remove the three catch Basin frames and covers shown by the symbol above. Replace these with "Drainage Structure Cover (Type D)". See sheet # 3.
  2. For sections X-X and Y-Y, See Sheet # 3.

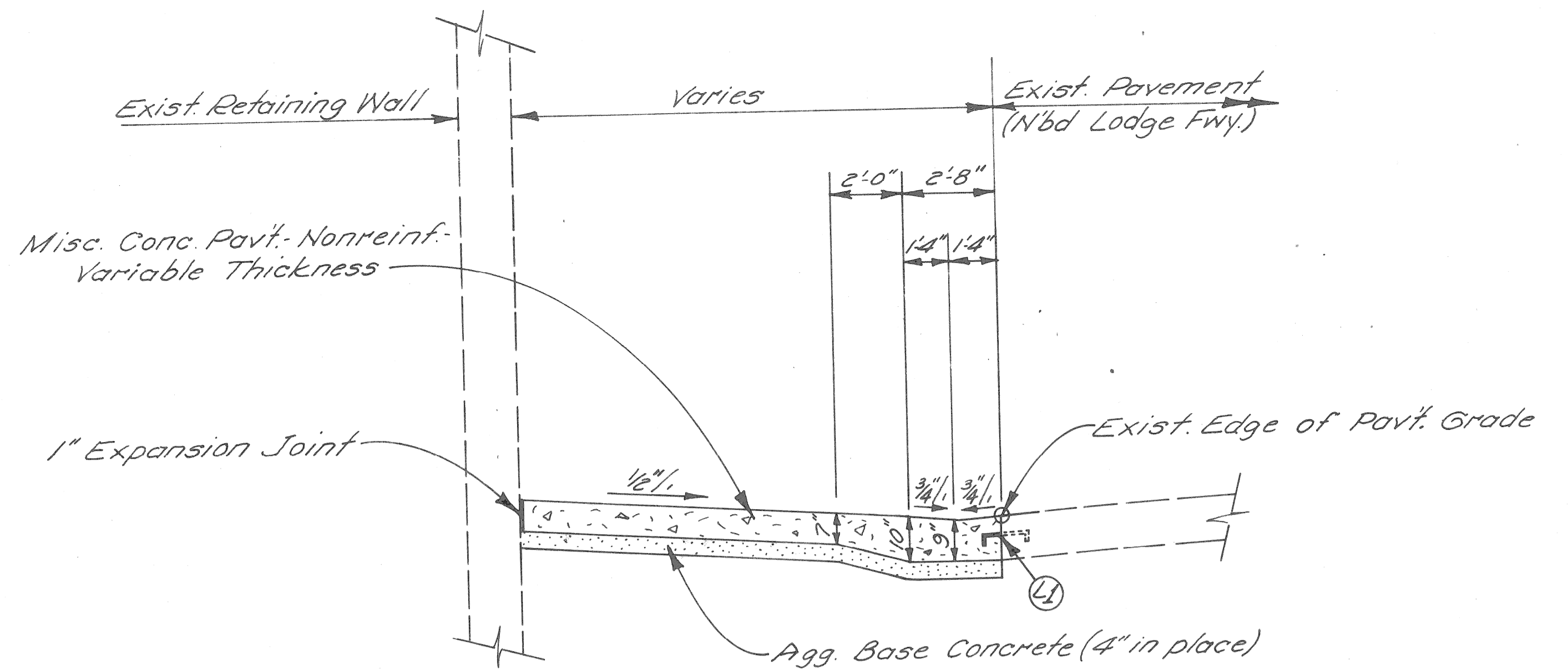


DETAIL "A"  
NO SCALE

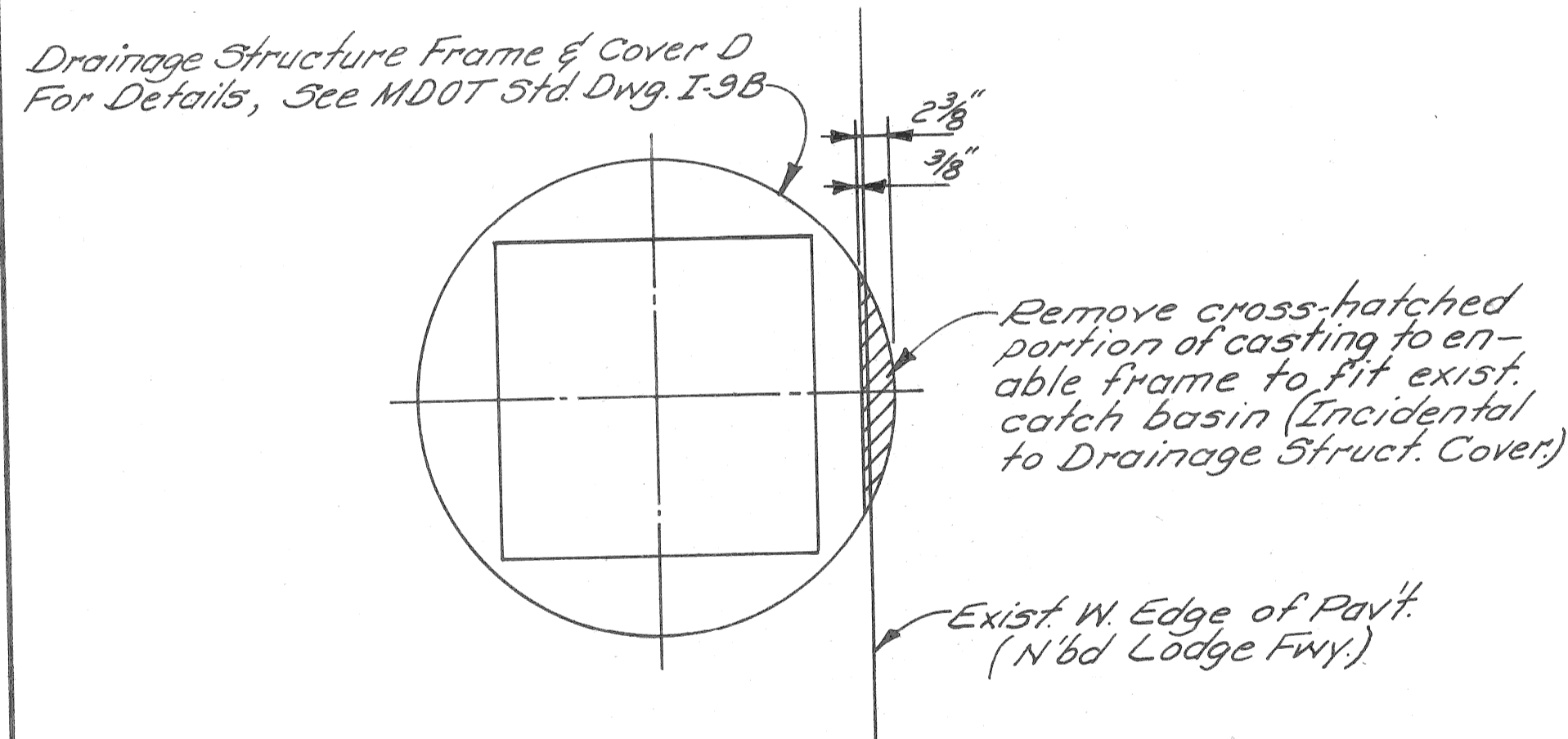
<table border="1"> <tr> <td>DESIGNED BY</td> <td></td> </tr> <tr> <td>DRAWN BY</td> <td>Sucech</td> </tr> <tr> <td>TRACED BY</td> <td></td> </tr> <tr> <td>CHECKED BY</td> <td></td> </tr> </table>		DESIGNED BY		DRAWN BY	Sucech	TRACED BY		CHECKED BY		<table border="1"> <tr> <td>APPROVED:</td> <td></td> </tr> <tr> <td>ENGINEER OF STREETS</td> <td></td> </tr> <tr> <td>HIGHWAY ENGINEER</td> <td></td> </tr> </table>	APPROVED:		ENGINEER OF STREETS		HIGHWAY ENGINEER		<p align="center">CITY OF DETROIT CITY ENGINEERING DIVISION - EPMD BUREAU OF STREETS AND HIGHWAYS FOR</p>	<p align="center">JOE LOUIS ARENA PEDESTRIAN WALKWAYS</p>	<table border="1"> <tr> <td>SHEET</td> <td>2</td> <td>OF</td> <td>3</td> <td>SHEETS</td> </tr> <tr> <td>CONTRACT NO.</td> <td colspan="4"></td> </tr> <tr> <td>ASSIGNMENT NO.</td> <td colspan="4"></td> </tr> <tr> <td>DATE</td> <td colspan="4">5-14-80</td> </tr> </table>	SHEET	2	OF	3	SHEETS	CONTRACT NO.					ASSIGNMENT NO.					DATE	5-14-80			
DESIGNED BY																																							
DRAWN BY	Sucech																																						
TRACED BY																																							
CHECKED BY																																							
APPROVED:																																							
ENGINEER OF STREETS																																							
HIGHWAY ENGINEER																																							
SHEET	2	OF	3	SHEETS																																			
CONTRACT NO.																																							
ASSIGNMENT NO.																																							
DATE	5-14-80																																						



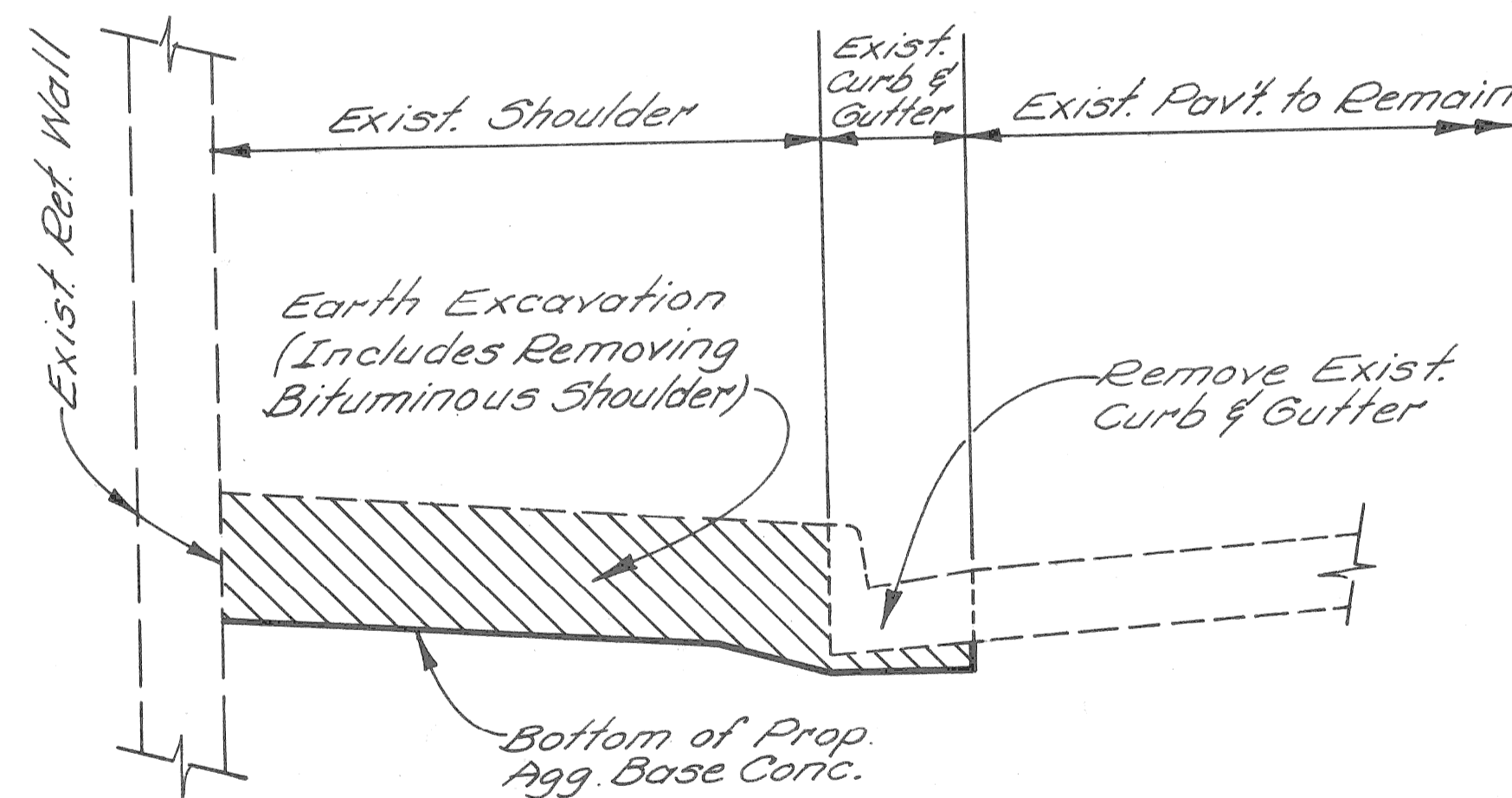
**SECTION X-X**  
NO SCALE



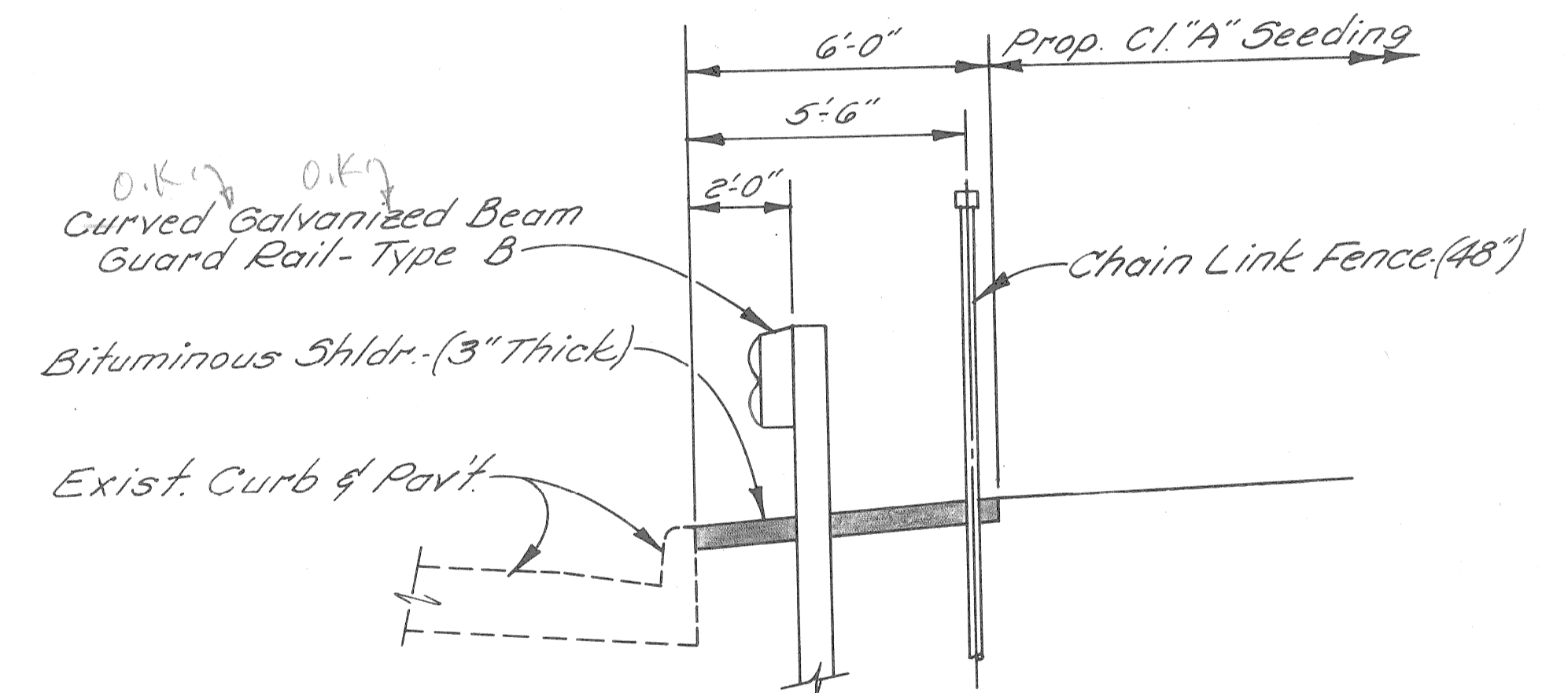
**SECTION Y-Y**  
NO SCALE



**DRAINAGE STRUCTURE COVER**  
NO SCALE



**EXCAVATION & REMOVAL SECTION**  
NO SCALE



**SECTION Z-Z**  
NO SCALE

**NOTES:**

- 1 It is estimated that 50% of the existing lane ties can be preserved in the areas where (1) Longitudinal Bulkhead Joints are called for. Additional hook bolts shall be placed where the existing coupling can be re-tapped and used. The additional care required to preserve the existing lane ties and the additional hook bolts required for the (2) Joint will be included in the pay item "Misc. Conc. Pavt.-Nonreinf.-Variable Thickness." Expansion Anchors will not be required for this joint.

DESIGNED BY	DRAWN BY	TRACED BY	CHECKED BY
	MAB		
APPROVED	ENGINEER OF STREETS	HIGHWAY ENGINEER	

CITY OF DETROIT  
CITY ENGINEERING DIVISION - EPMD  
BUREAUS OF STREETS AND HIGHWAYS

JOE LOUIS ARENA PEDESTRIAN WALKWAYS

N'BD LODGE FWY. SHOULDER DETAILS

SHEET 3 OF 3 SHEETS
CONTRACT NO.
ASSIGNMENT NO.
DATE 5-14-80