

INDEX OF SHEETS

SHEET NO.	DESCRIPTION	# OF SHEET
01	TITLE SHEET	1
02	EXISTING GENERAL PLAN OF SITE	1
03 - 05	MAINTAINING TRAFFIC	3
06-07	ROAD - REMOVAL	2
08	ROAD - CONSTRUCTION	1
09	ROAD - TYPICAL CROSS-SECTION	1
10	LONGITUDINAL SECTION	1
11 - 27	ROAD - DETAILS	17
28 - 29	EXPANSION JOINT DETAILS	2
30 - 45	REFERENCE DRAWINGS	16
46 - 47	DECK RESURFACING DETAILS	2

MDOT STANDARD PLANS

WHERE THE FOLLOWING ITEMS ARE ALLED FOR ON THE PLANS THEY ARE TO BE CONSTRUCTED ACCORDING TO THE STANDARD PLAN GIVEN BELOW OPPOSITE EACH ITEM UNLESS OTHERWISE INDICATED.

- DRIVEWAY OPENING & APPROACHES AND CONCRETE SIDEWALK R-29-I
- INTEGRAL CURB AND INTEGRAL CURB & GUTTER R-31-F
- CHAIN LINK FENCE (USING TENSION WIRE) R-98-B
- MOLDING, BEVEL, LIGHT STANDARD ANCHOR BOLT ASSEMBLY AND NAME PLATE DETAILS B-103-E

MDOT SPECIAL DETAILS

WHERE THE FOLLOWING ITEMS ARE ALLED FOR ON THE PLANS THEY ARE TO BE CONSTRUCTED ACCORDING TO THE SPECIAL DETAIL GIVEN BELOW OPPOSITE EACH ITEM UNLESS OTHERWISE INDICATED.

- SIDEWALK RAMP DETAILS R-28-J
- PLACEMENT OF TEMPORARY CONCRETE BARRIER R-126-I
- BRIDGE RAILING, AESTHETIC PARAPET TUPE B-25-F

*SEE WZO-125-D FOR TEMPORARY TRAFFIC CONTROL DEVICE DETAILS.

GENERAL NOTE

The contractor must restore all MDOT ROW that has been damaged during it's use for construction, to a condition similar and equal to that existing before the damage occurred, when the project is completed.

CITY OF DETROIT
IN CO-OPERATION WITH
MICHIGAN DEPARTMENT OF TRANSPORTATION
&
FEDERAL HIGHWAY ADMINISTRATION
PLAN & DETAIL OF PROPOSED
REHABILITATION OF THE
SOUTH SERVICE DRIVE BRIDGE
OVER THE
JEFFRIES FWY.
JOB NO.: PW-7001
CONTROL SECTION NO.: 82122

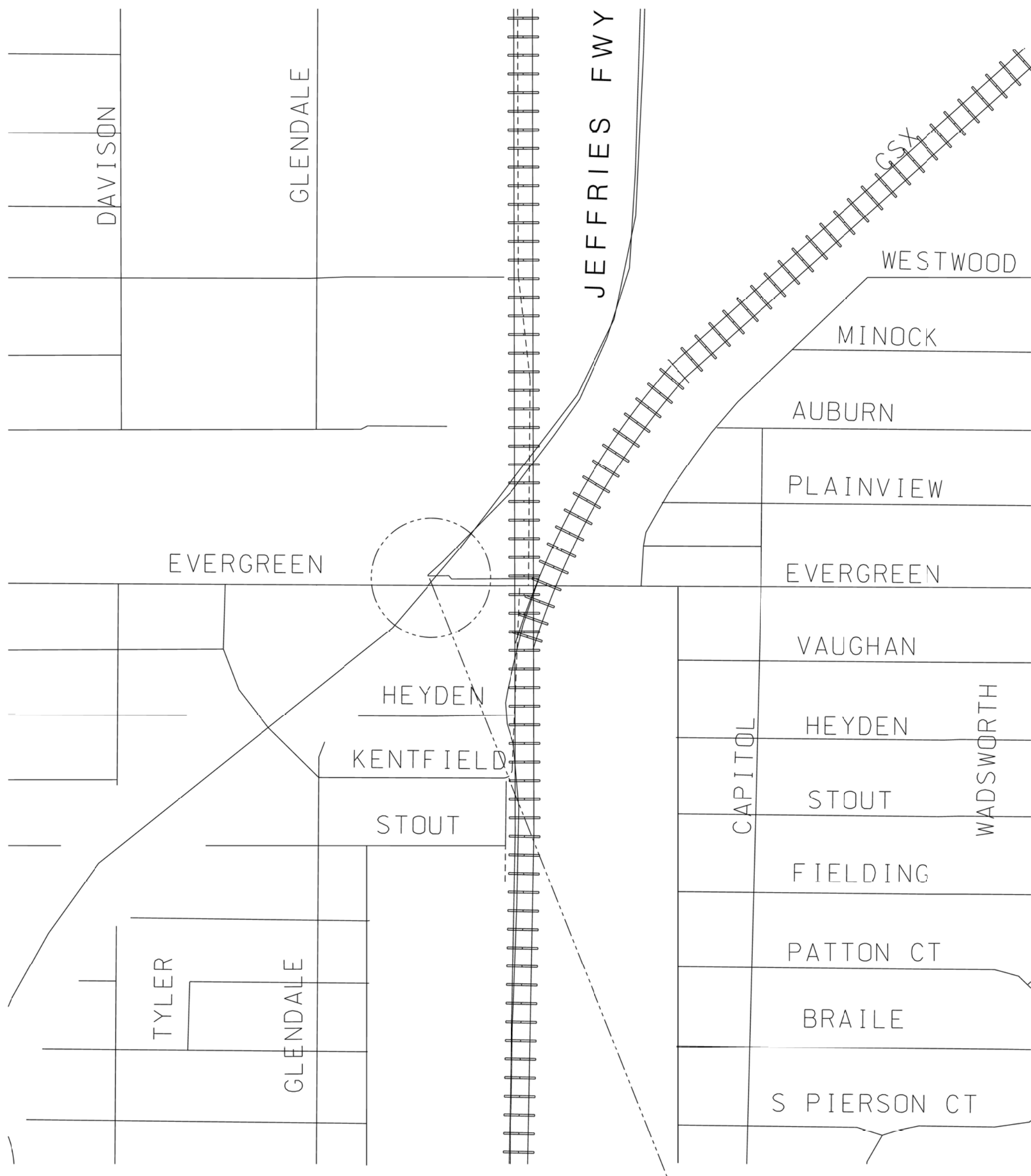
THE WORK INCLUDED CONSISTS OF CONSTRUCTING A SHALLOW OVERLAY, PARTIAL STRUCTURAL STEEL COATING, AND REPLACEMENT OF JOINTS, SUBSTRUCTURE REPAIR, AND APPROACH WORK AND TRAFFIC MAINTENANCE. EXCEPT WHERE OTHERWISE INDICATED ON THESE PLANS, THE PROPOSAL AND SUPPLEMENTAL SPECIFICATIONS CONTAINED HEREIN, ALL MATERIALS AND WORKMANSHIP SHALL BE ACCORDANCE WITH THE MICHIGAN DEPARTMENT OF TRANSPORTATION STANDARDS SPECIFICATIONS FOR CONSTRUCTION 2012 EDITION.

ALL EXPOSED CONCRETE CORNERS SHOWN SQUARE ON THE PLANS SHALL BE BELIEVE WITH 1/2" TRIANGULAR MOLDINGS EXCEPT AS OTHERWISE NOTED. THE DESIGN OF THE STRUCTURAL MEMBERS IS BASED ON MATERIALS OF THE FOLLOWING GRADES AND STRESSES.

CONCRETE: GRADE S2 $f_c = 3,000$ PSI
 CONCRETE: GRADE D $f_c = 4,000$ PSI
 STEEL REINFORCEMENT: $f_y = 60,000$ PSI

ALL DIMENSIONS ON THESE PLANS ARE IN INCHES EXCEPT AS NOTED. THE STATIONING AS SHOWN ON THESE PLANS FOR THE INTERSECTION OF THE CENTERLINE OF BRIDGE AND ROADWAY (AND THE RAILROAD) CENTERLINE IS BELIEVING TO BE CORRECT. IT SHALL BE CHECKED AT THE TIME OF STARTING CONSTRUCTION AND IF THE STATIONING SHOWN ON THE PLANS IS INCORRECT, IT SHALL BE REPORTED TO THE ENGINEER AND THE STRUCTURE SHALL BE STAKE OUT USING THE ACTUAL INTERSECTION OF THE CENTERLINE OF THE BRIDGE AND ROADWAY (AND THE RAILROAD) CENTERLINE AS THE CONTROL POINT.

BIDDERS WILL BE FURNISHED WITH SCANNED IMAGES OF PLAN SHEETS OF THE EXISTING STRUCTURES IF REQUESTED. [USE ON ALL PROJECTS WHERE EXISTING STRUCTURE PLANS ARE KNOWN TO EXIST] (I.U. 2-22-2006)



PROJECT LOCATION
X01 OF 82122

TRAFFIC DATA:

	YEAR 1997	YEAR 2026
ADT	-----	-----
DHV	-----	-----
COMM% DESIGN SPEED	-----	-----
POSTED SPEED	-----	-----

THE REGULATED WASTE ACTIVITY IDENTIFICATION NUMBERS FOR THIS PROJECT ARE AS FOLLOWS: MIK950702199
 CONTROL SECTION NUMBER: 82122

CONTRACT FOR STRUCTURE REHABILITATION PROJECT
SOUTH SERVICE DRIVE BRIDGE



LOCAL AUTHORITY - APPROVAL
CITY OF DETROIT
CITY ENGINEERING DIVISION
DEPARTMENT OF PUBLIC WORKS

APPROVED BY _____ DATE _____

APPROVED BY _____ DATE _____

PREPARED UNDER THE SUPERVISION OF _____

LICENSED PROFESSIONAL ENGINEER _____ DATE _____

CITY OF DETROIT ORGANIZATION

CITY ENGINEERING DIVISION, D.P.W.
2 WOODWARD AVE. SUITE 601 DETROIT MI 48216
ADDRESS

CONTROL SECTION	JOB NUMBER	FEDERAL NUMBERS		SHEET NO.
		PROJECT	ITEM	
				01

BRO. PW-7001

CONTROL SECTION X01 OF 82122
JOB NUMBER

DATE:

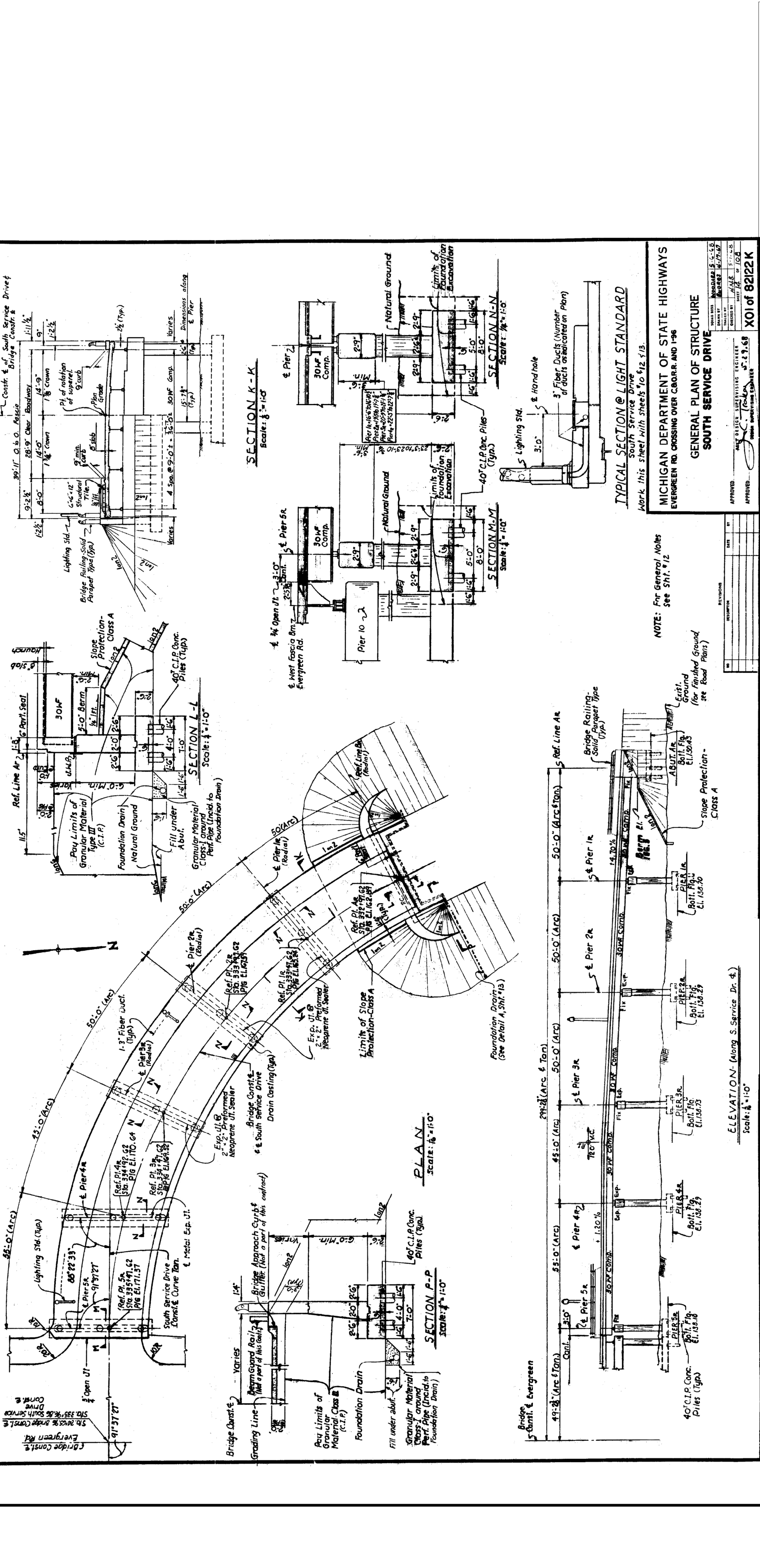
CHECKED BY:

DATE:

CHECKED BY:

DATE: APRIL 26, 2019
DRAWN BY: SA
DRAWN FILE NAME: South Service Drive Bridge - Title.dgn

SOUTH SERVICE DRIVE BRIDGE
 MUST CHECK WITH UTILITIES FOR LOCATIONS OF EXISTING
 STRUCTURES WHETHER OR NOT INDICATED ON PLANS.



SECTION K-K
 Scale: 3/8" = 1'-0"

SECTION L-L
 Scale: 3/8" = 1'-0"

SECTION M-M
 Scale: 3/8" = 1'-0"

SECTION N-N
 Scale: 3/8" = 1'-0"

SECTION P-P
 Scale: 3/8" = 1'-0"

TYPICAL SECTION @ LIGHT STANDARD
 South Service Drive
 3" Fiber Ducts (Number of ducts as indicated on Plan)
 5" Lighting Std.
 3'-0" Hand hole

NOTE: For General Notes See Sht. # 12

GENERAL PLAN OF STRUCTURE SOUTH SERVICE DRIVE
 Work this sheet with sheets #10, #12, #13.

MICHIGAN DEPARTMENT OF STATE HIGHWAYS
 EVERGREEN RD. CROSSING OVER C.A.O.R.R. AND I-96

APPROVED: [Signature]
 DATE: 5/1/68
 X01 of 82122K

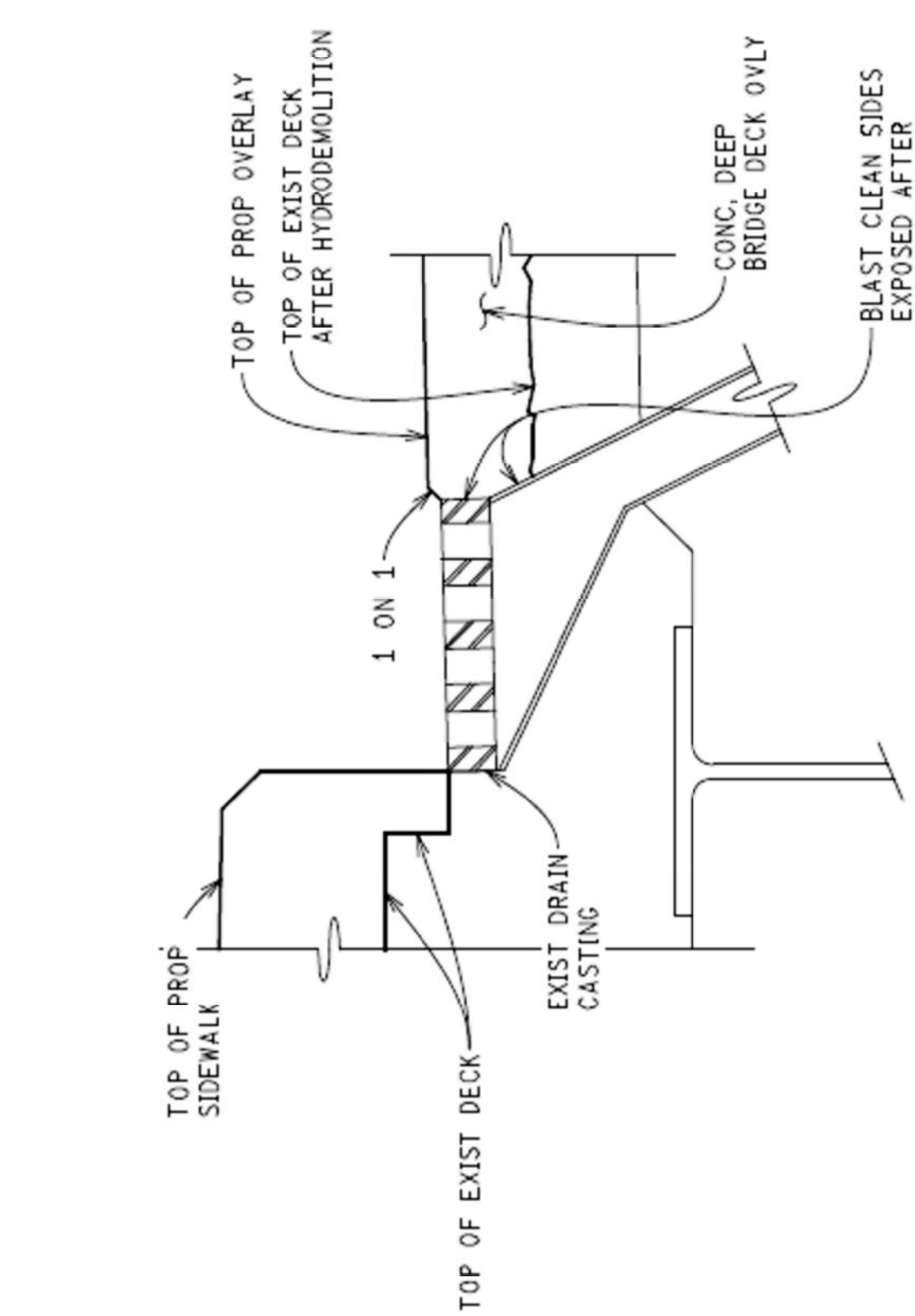
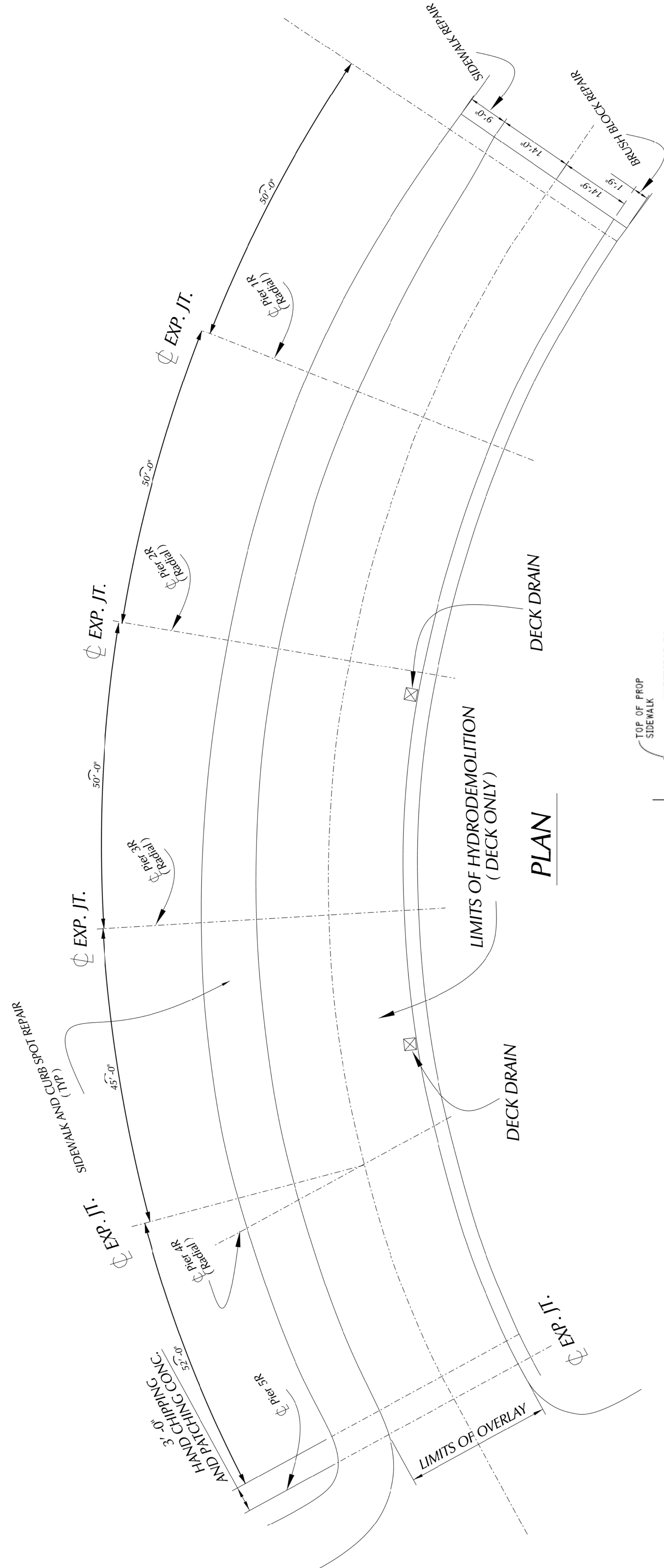
NO.	DESCRIPTION	DATE	BY	REVISIONS

BY	CHECKED BY	APPROVED
PLAN		
GRADE		
ESTIMATE		
FINAL		

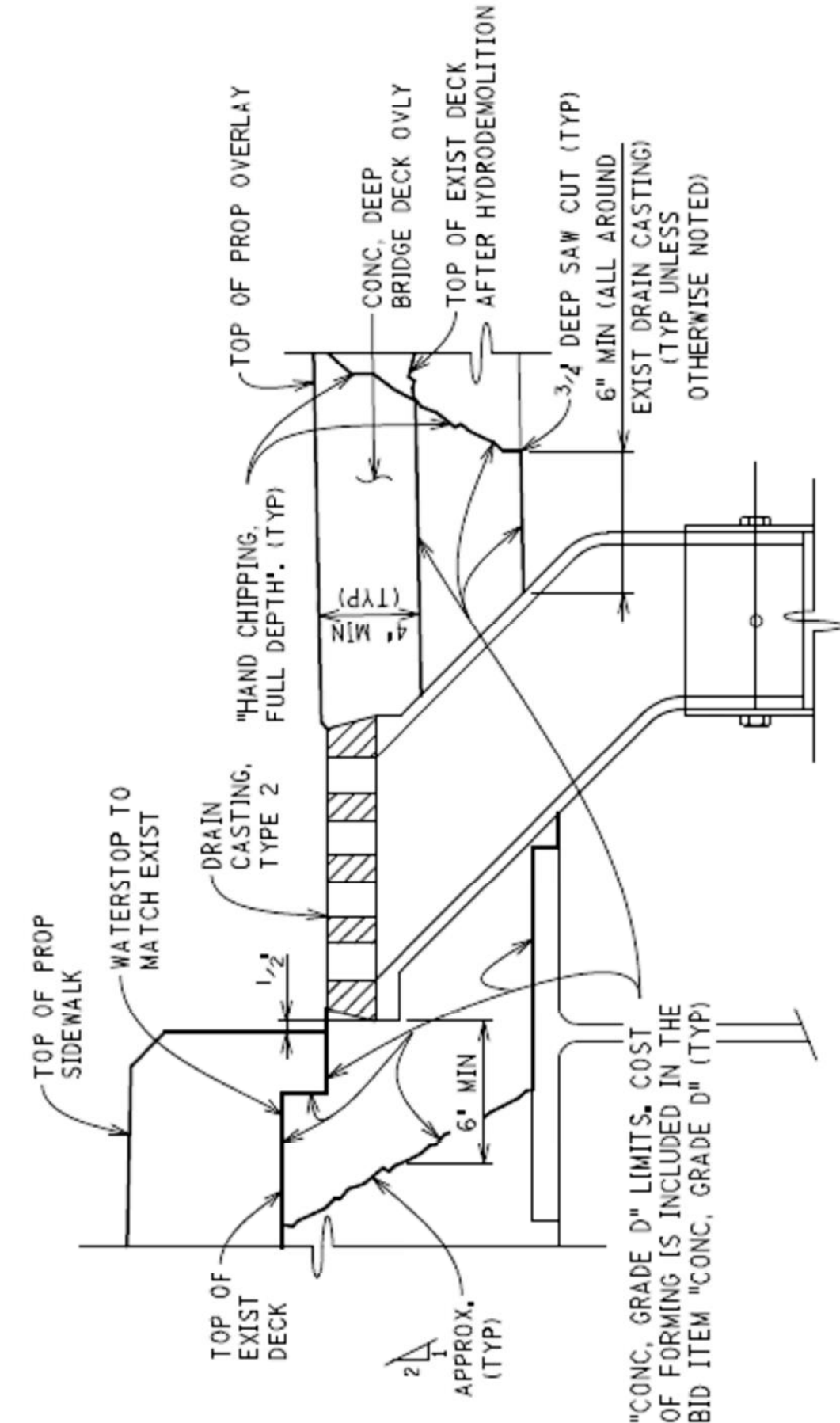
DESCRIPTION	NO.	CHECK	DATE
REVISIONS			

SCALE	HORIZONTAL	VERTICAL	BOOK	PG.	DATE

BENCH MARKS ELEV



OVERLAY TYPICAL DETAIL AT DECK DRAIN



DRAIN CASTING REPLACEMENT DETAIL
 EXIST REBARS NOT SHOWN FOR CLARITY. SALVAGE AND BLAST CLEAN ALL PARTIALLY EXPOSED REBARS.
 (THE 2 LOCATIONS OF DRAIN CASTING REPLACEMENT ARE TO BE DETERMINED BY THE ENGINEER)

NOTE:

1. CONTRACTOR SHALL LOCATE ALL ACTIVE UNDERGROUND UTILITIES PRIOR TO STARTING WORK AND SHALL CONDUCT THIS OPERATION IN SUCH A MANNER AS TO ENSURE THAT THOSE UTILITIES NOT REQUIRED RELOCATION WILL BE NOT DISTURBED.

REMOVAL QUANTITIES	
200 SYD	COLD MILLING CONG. PAVEMENT
500 FT	INTEGRAL CURB & SIDEWALK
515 FT	CURB, REM
*150 STD	SIDEWALK, REM
** 0.5 Acre	CLEARING
2 EA.	DECK DRAIN, ADJ.

* THIS QUANTITIES FOR SIDEWALK PATCH REMOVAL ON APPROACHES. EXACT LOCATION SHALL BE DETERMINE IN THE FIELD.

** THIS QUANTITIES FOR CLEANING BRUSHES AND OTHER VEGETATION ON BRIDGE SIDEWALKS, APPROACHES AND OTHER AREAS AS DIRECTED BY THE ENGINEER

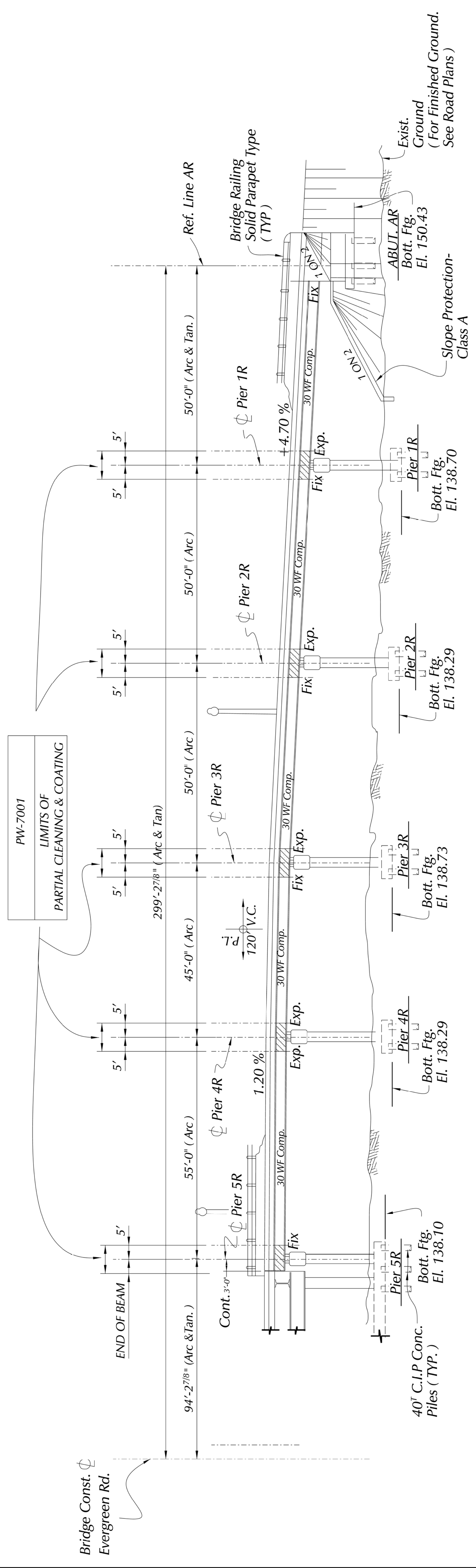
NOTE:

PROTECTIVE TREATMENT FOR BRIDGE DECK IS TO BE APPLIED TO ALL SUPERSTRUCTURE CONCRETE SURFACES BETWEEN FASCIA LINES.

REVISIONS		CHECKED BY APPROVED DATE	CITY OF DETROIT CITY ENGINEERING DIVISION - D.P.W. BUREAU OF STREETS AND HIGHWAYS FOR	South Service Drive Bridge REMOVAL PLAN	SHEET 06 OF 47 SHEETS CONTRACT N.O. PW-7001 ASSIGNMENT NO. DATE
DESCRIPTION	OR CHECK DATE				
PLAN					
GRADE					
ESTIMATE					
FINAL					

SCALE: HORIZONTAL: 1" = 40' VERTICAL: 1" = 10' BOOK: PW-7001 PG. 10 OF 10 DATE: 04/26/2019

BENCH MARKS ELEVATION



ELEVATION (Along S. Service Dr.)

SHEET 10 OF 47 SHEETS		CONTRACT NO. PW-7001	
ASSIGNMENT NO.		DATE 04/26/2019	
South Service Drive Bridge			
LONGITUDINAL SECTION			
CITY OF DETROIT CITY ENGINEERING DIVISION - D.P.W. BUREAU OF STREETS AND HIGHWAYS FOR			
PLAN	CHECKED BY	APPROVED	
GRADE			
ESTIMATE			
FINAL			
DESCRIPTION	OR CHECK DATE	DATE	BY
REVISIONS			

