

MISCELLANEOUS QUANTITIES

The following items of work shall be done as they apply throughout the project. These items are not detailed or included on the plan and profile sheets

	Mobilization, Max.	Project Cleanup	Minor Traf Devices	Contractor Staking	Staking Plan Errors and Extras, One Person	Staking Plan Errors and Extras, Two Person	Staking Plan Errors and Extras, Three Person	Critical Path Method Network Schedule	Transporting Salv MDDOT Materials
	LS	LS	LS	LS	Hr	Hr	Hr	LS	LS
JN 122645A CAT 0001 FED/STATE/DET	0.91	0.91	1	1	38	15	23	1	1
JN 122645A CAT 0003 FED/STATE	0.09	0.09	0	0	0	0	0	0	0

CAT 0001

- 50 Cyd Non Haz Contaminated Material Handling and Disposal, LM
- 50 Cyd Subgrade Undercutting, Type I
- 300 Syd Geotextile, Stabilization
- 1750 Dlr Conc Quality Initiative
- 20 Ea Lane Tie, Epoxy Anchored
- 300 Sft Sidewalk, Conc, 4 inch

EXPLORATORY INVESTIGATION

The following items of work are included for the purpose of verifying depths of underground utilities that may be in conflict with proposed work. These items are to be used as directed by the Engineer.

CAT 0001

- 50 Ft Exploratory Investigation, Vertical
- 133 Syd Pavt Repr, Rem
- 133 Syd Pavt Repr, Nonreinf Conc, 12 inch
- 3 Ton Cement
- 48 Ft Joint, Tied, Trg
- 200 Ft Saw Cut, Intermediate
- 70 Ea Lane Tie, Epoxy Anchored

DRAINAGE IMPROVEMENTS

The following items of work shall be done as directed by the engineer. These items are in addition to the items shown on the plan and profile sheets. These items of work include videotaping, cleaning, and/or replacing sections of existing sewers located at bridge approaches or underneath the bridge collecting water from bridge downspouts.

CAT 0001

- 100 Ft Sewer, Rem, Less than 24 inch
- 100 Ft Sewer, CI A, 12 inch, Tr Det B
- 500 Ft Video Taping Sewer and Culv Pipe
- 500 Ft Sewer Cleanout
- 10 Ea Dr Structure, Cleaning

MAINTAINING TRAFFIC

- CAT 0001
- 100 FT Fence, Temp
- 70 FT Pavt Mrkg, Ovly Cold Plastic, 6 inch, Crosswalk
- 30 FT Pavt Mrkg, Ovly Cold Plastic, 24 inch, Stop Bar
- 1 Ea Pavt Mrkg, Ovly Cold Plastic, Rt Turn Arrow Sym
- 2 Ea Pavt Mrkg, Ovly Cold Plastic, Only
- 100 Sft Rem Spec Mrkg
- 15 Ea Barricade, Type III, High intensity, Double Sided, Lighted, Furn
- 15 Ea Barricade, Type III, High intensity, Double Sided, Lighted, Oper
- 10 Ea Conc Barrier, Reflector Replacement
- 50 ft Conc Barrier, Temp, Adj
- 50 ft Conc Barrier, Temp, Funj
- 50 ft Conc Barrier, Temp, Oper
- 2 Ea Lighted Arrow, Type C, Oper
- 2 Ea Lighted Arrow, Type C, Oper
- 1 LS Minor Traf Devices
- 2 Ea Mobile Attenuator
- 100 ft Pavt Mrkg, Longit, 6 inch or Less Width, Rem
- 90 ft Pavt Mrkg, Longit, Greater than 6 inch Width, Rem Pavt
- 1000 ft Mrkg, Longit, Water Blasting, 6 inch or less Width, Rem
- 500 ft Pavt Mrkg, Type R, 4 inch, White, Temp
- 400 ft Pavt Mrkg, Type R, 4 inch, Yellow, Temp
- 110 Ea Plastic Drum, High Intesity, Furn
- 110 Ea Plastic Drum, High Intesity, Oper
- 2 Ea Sign Cover
- 4 Ea Sign Cover, Type 1
- 100 Sft Sign, Type A, Temp, Prismatic, Furn
- 100 Sft Sign, Type A, Temp, Prismatic, Oper
- 500 Sft Sign, Type B, Temp, Prismatic, Furn
- 500 Sft Sign, Tupe B, Temp, Prismatic, Oper
- 700 Sft Sign, Type B, Temp, Prismatic, Special, Furn
- 700 Sft Sign, Type B, Temp, Prismatic, Special, Oper
- 1 Ea Sign, Portable, Changeable Message, NTCIP-Compliant, Furn
- 1 Ea Sign, Portable, Changeable Message, NTCIP-Compliant, Oper
- 200 ft Pavt Mrkg, thernmopl, 6 inch white Width, Rem
- 1 Ea Sign, Type B, Erect, Erect, Salv

WORK ZONE DEVICES

DEVICES GROUND DRIVEN SIGN SUPPORTS FOR TEMP SIGNS	WZD-100-A *
TEMPORARY TRAFFIC CONTROL DEVICES	WZD-125-E *

PLAN REVISIONS				TETRA TECH		MDOT Michigan Department of Transportation		NO SCALE		DATE: 07/02/2015	CS: 82122	MISCELLANEOUS QUANTITIES SHEET		DRAWING	SHEET
NO.	DATE	AUTH	DESCRIPTION	NO.	DATE	AUTH	DESCRIPTION	FILE: 122645_MSCQNT001.doc	DESIGN UNIT: MAHDAVI	JN: 122645A	EVERGREEN AVE OVER I-96		EVERGR MSCQNT 001	SECT 1	8

DESCRIPTION	DR	CHK	APP	DATE
REVISIONS				

CITY OF DETROIT
 CITY ENGINEERING DIVISION - D.P.W.
 BUREAUS OF STREETS AND HIGHWAYS
 FOR

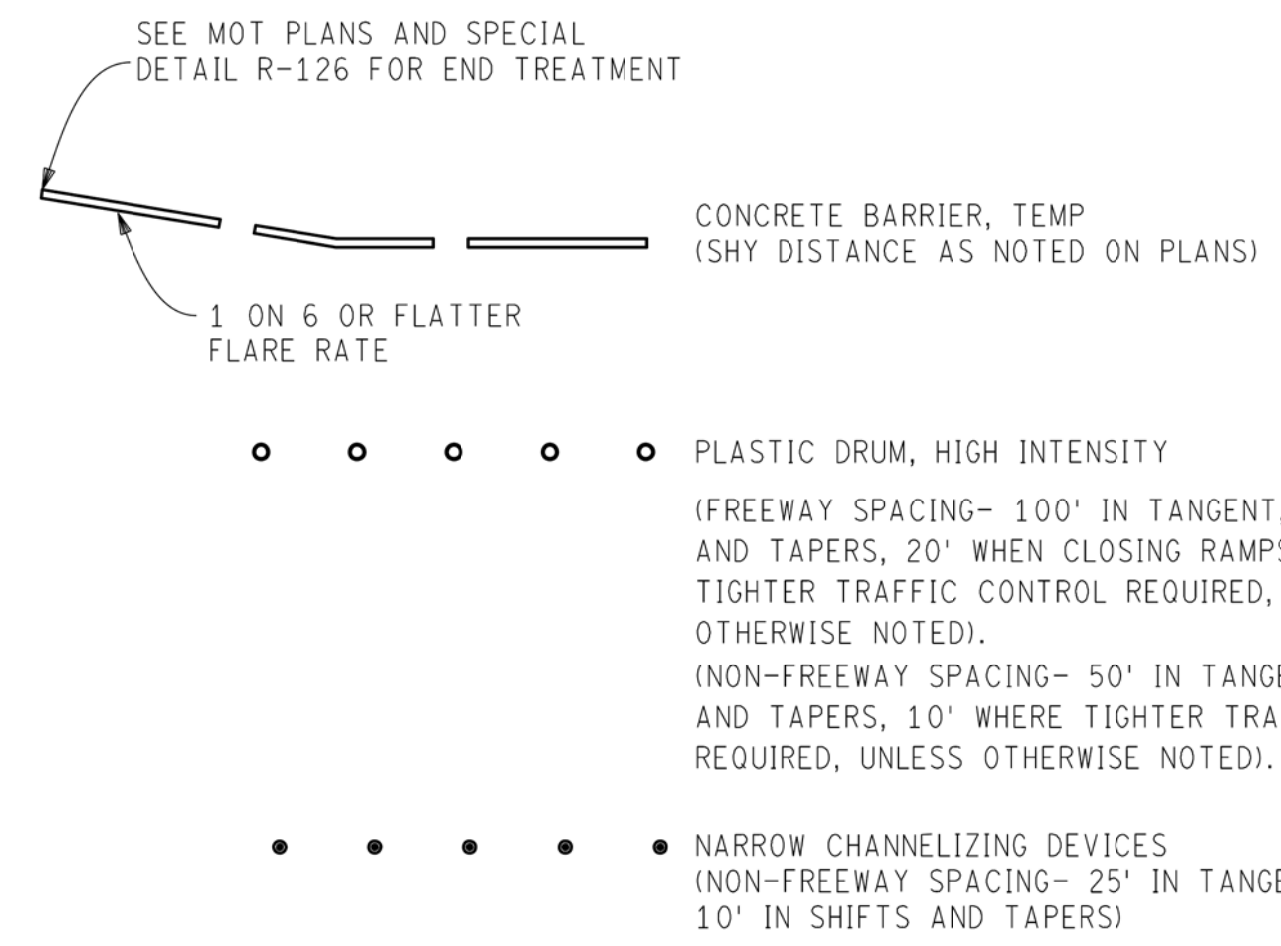
South Service Drive Bridge
MAINTENANCE OF TRAFFIC

SHEET **T.01** OF 12 SHEETS
 CONTRACT NO. **PW-7001**
 ASSIGNMENT NO.
 DATE **05/24/2019**

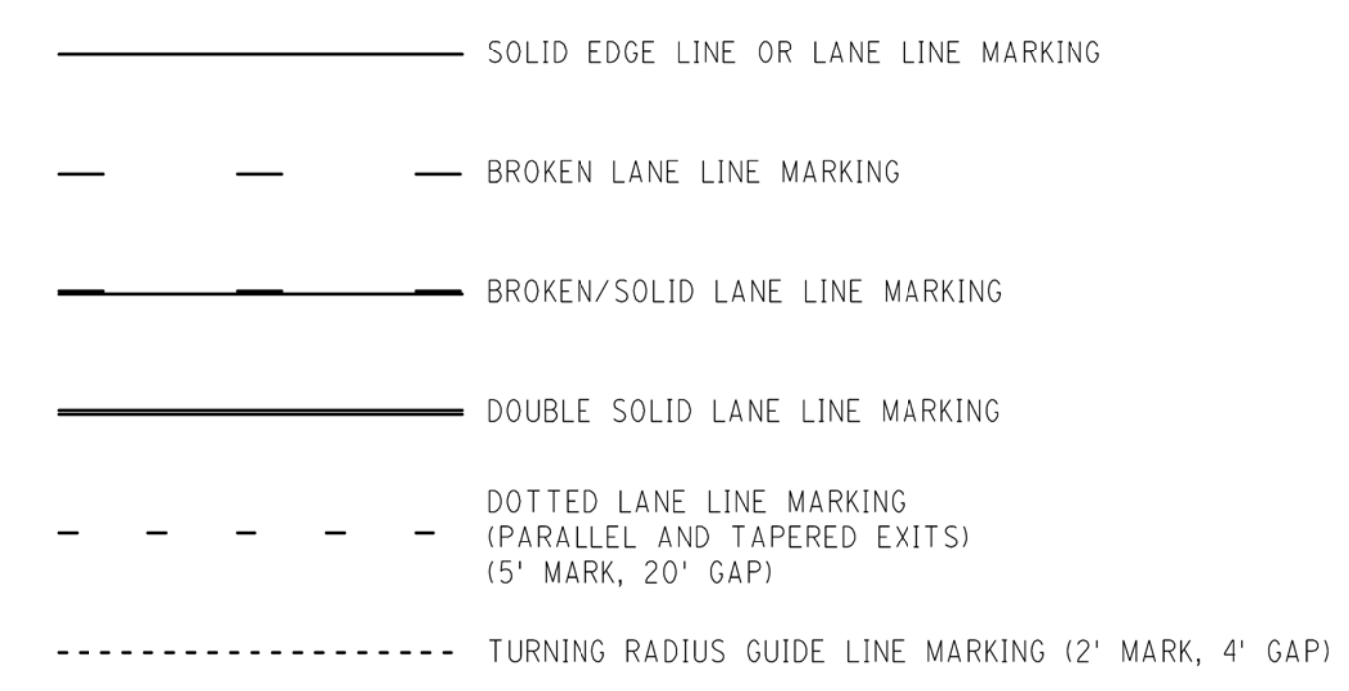
NOTES

- 1) WHEN CLOSING ROADWAYS, BRIDGES, RAMPS, SIDE STREETS AND/OR DRIVEWAYS, PLACE A SUFFICIENT NUMBER OF TYPE III BARRICADES TO CLOSE THE ROADWAY FROM EDGE OF PAVEMENT TO EDGE OF PAVEMENT WITH NO GAPS BETWEEN BARRICADES.
- 2) REASONABLE ACCESS, AS DETERMINED BY THE ENGINEER, TO ALL DRIVES AND CROSS STREETS MUST BE MAINTAINED AT ALL TIMES, EXCEPT AS NOTED IN THE SPECIAL PROVISION FOR MAINTAINING TRAFFIC.
- 3) FIELD ADJUSTMENT TO SIGNS AND TRAFFIC CONTROL DEVICES MAY BE NECESSARY TO FIT FIELD CONDITIONS.
- 4) COVER OR REMOVE ALL NON-APPLICABLE SIGNING.
- 5) FIELD ADJUSTMENT OF LANE CLOSURE TAPERS SHOWN ON THE PLANS MAY BE NECESSARY TO PROVIDE MAXIMUM VISIBILITY OF LIGHTED ARROW.
- 6) PLACE DETOUR SIGNS IN ACCORDANCE WITH DETAIL 1 FOUND AT THE END OF THE MOT PLANS.
- 7) THE SPECIAL SIGNS DETAILED AT THE END OF THE MOT PLANS WILL BE PAID FOR AS "SIGN, TYPE B, TEMP, PRISMATIC, SPECIAL". WHEN SPECIFIED, WOOD POSTS ARE CONSIDERED TO BE INCLUDED IN THE PAY ITEM "SIGN, TYPE B, TEMP, PRISMATIC, SPECIAL, FURN". SIGN SUPPORTS MUST BE INSTALLED IN ACCORDANCE WITH MDOT WORK ZONE SPECIAL DETAIL WZD-100-A (GROUND DRIVEN SIGN SUPPORTS FOR TEMPORARY SIGNS).
- 8) DISTANCES SHOWN ON THE PLANS SHOULD BE CONSIDERED MINIMUM DISTANCES.

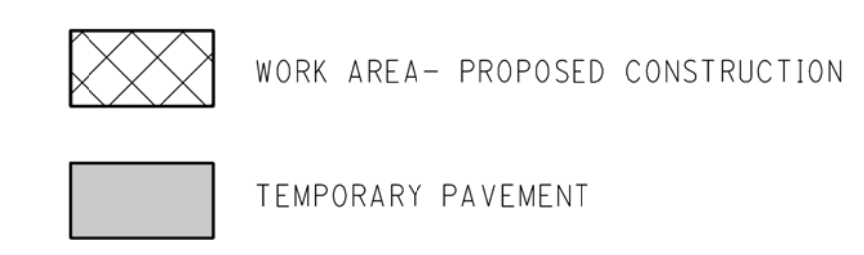
MAINTAINING TRAFFIC CHANNELIZING DEVICES



PAVEMENT MARKING LINE PATTERNS

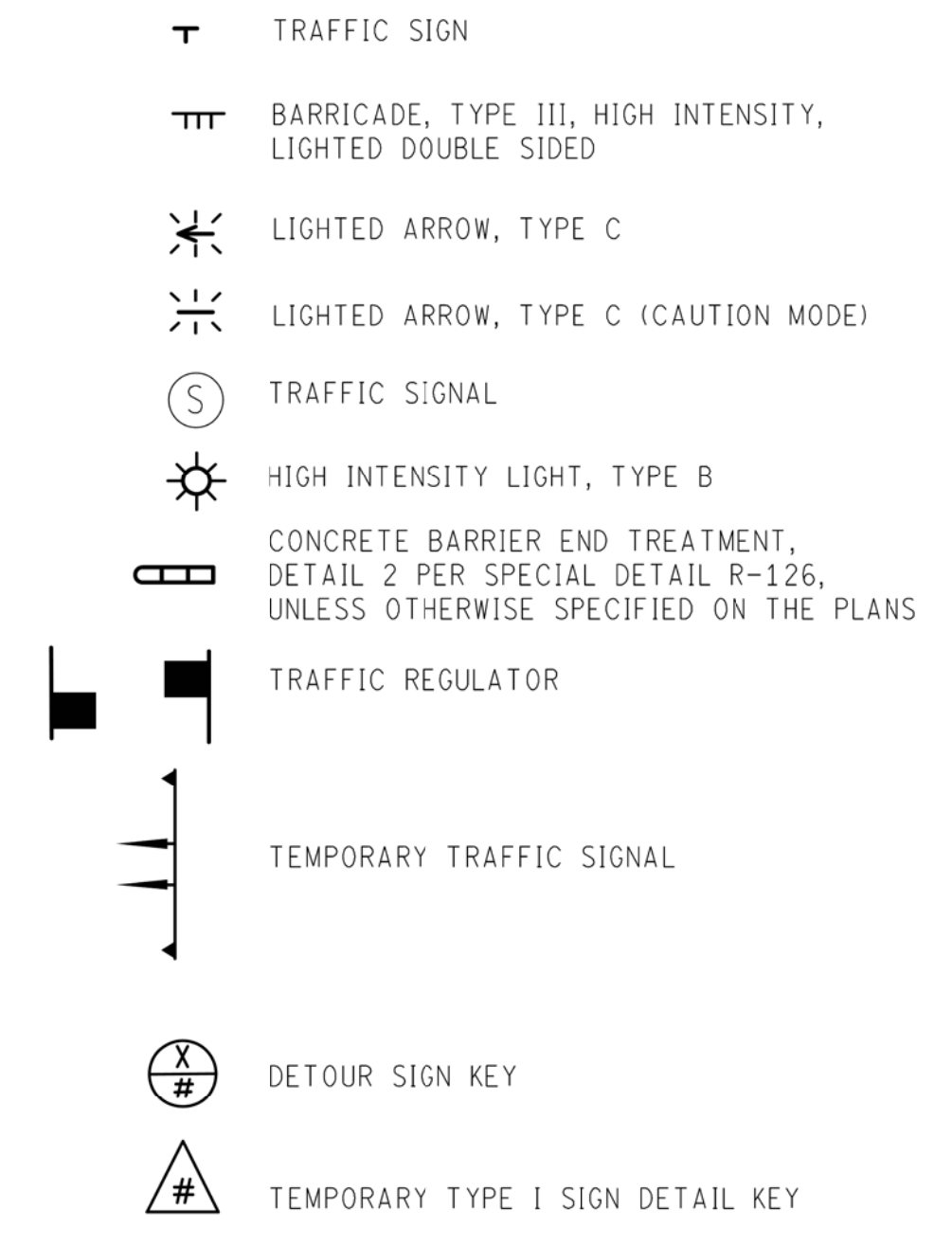


MOT PLAN SHEET MISCELLANEOUS PATTERNS

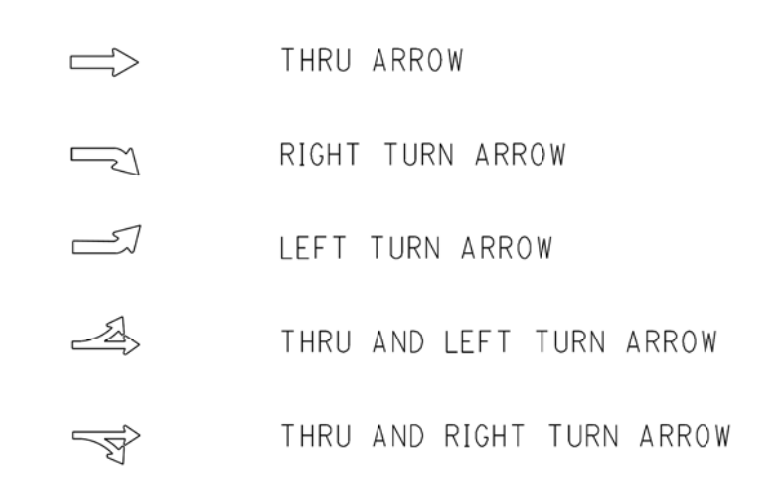


NOTE: THIS LEGEND SHEET APPLIES TO MAINTAINING TRAFFIC SHEETS ONLY.

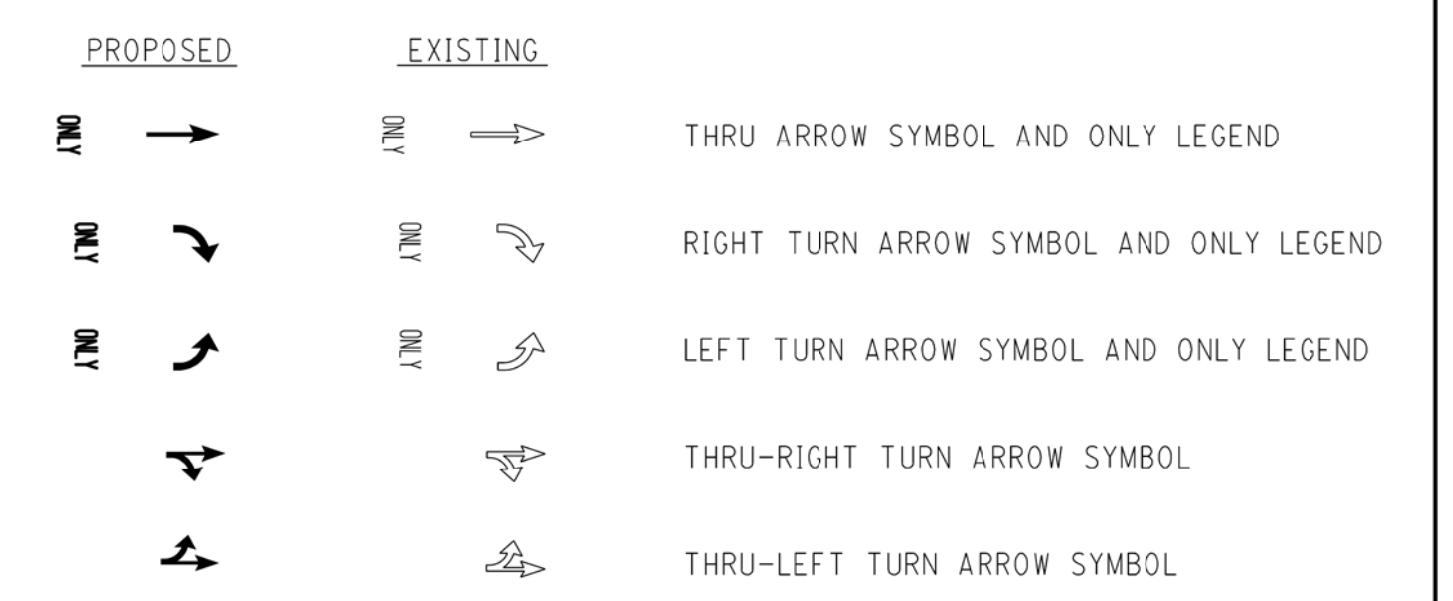
MAINTAINING TRAFFIC SYMBOLS



TRAFFIC FLOW ARROWS



SPECIAL MARKINGS



NOTE: ARROW SYMBOL AND LEGENDS TO BE PLACED IN ACCORDANCE WITH MDOT PAVEMENT MARKING STANDARD PLANS PAVE-900 SERIES

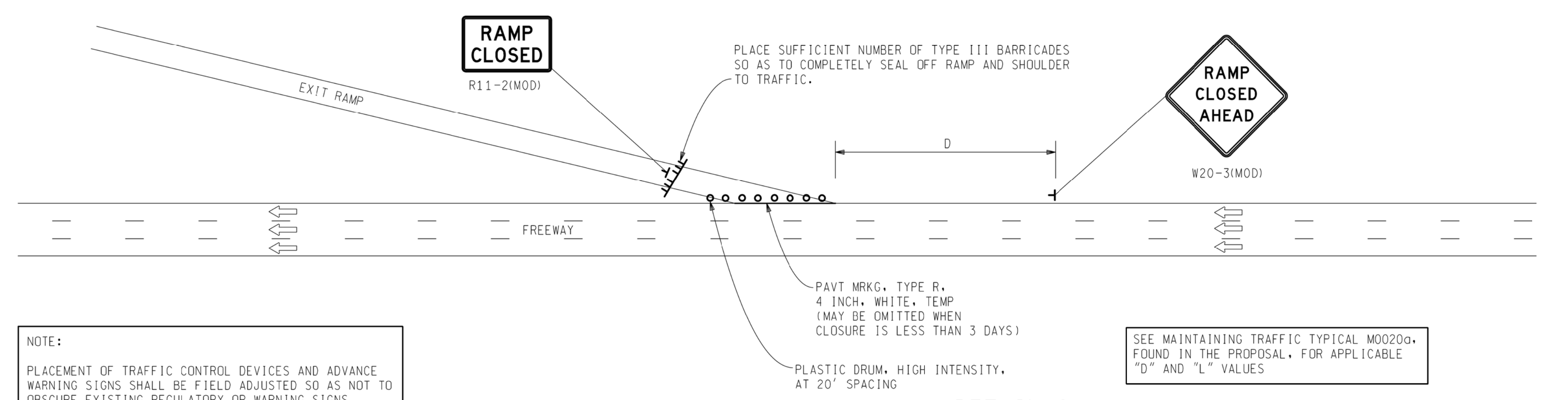
AS-LET PLAN REVISIONS (SUBMITTAL DATE:)							NO SCALE	DATE: 07/02/2015	CS: R01 OF 82122	MAINTAINING TRAFFIC	DRAWING	SHEET
NO.	DATE	AUTH	DESCRIPTION	NO.	DATE			AUTH	DESCRIPTION	DESIGN UNIT: MAHDAVI	JN: 122645A	EVERGREEN ROAD OVER I-96 & CSX RR
											1	40
											MAINTAINING TRAFFIC INDEX & LEGEND	

DESCRIPTION	OR	NO	DATE	BY	CHECKED BY	APPROVED
PLAN						
GRADE						
ESTIMATE						
FINAL						

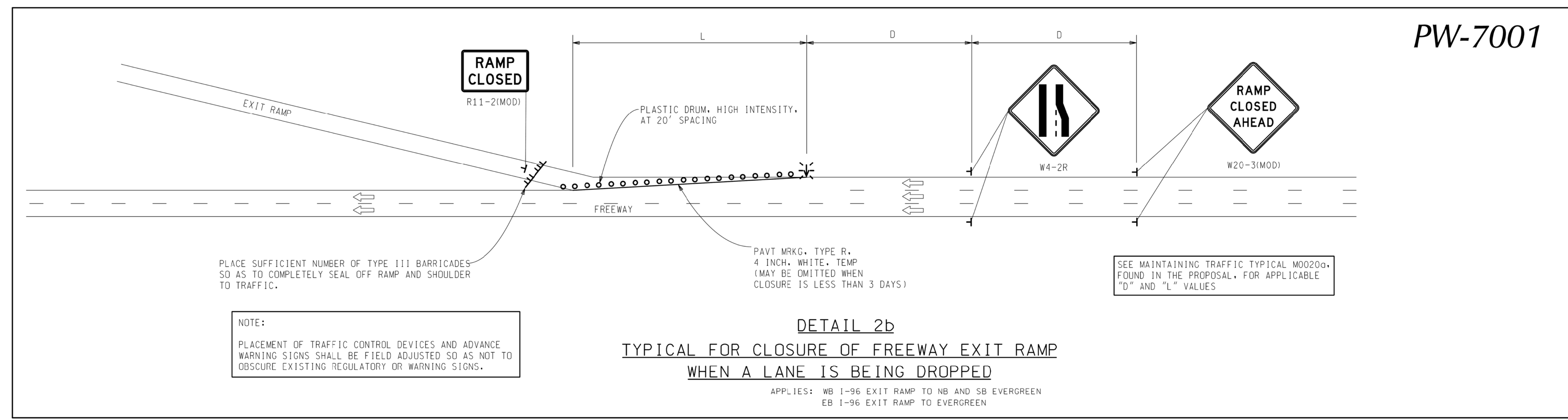
CITY OF DETROIT
CITY ENGINEERING DIVISION - D.P.W.
BUREAUS OF STREETS AND HIGHWAYS
FOR

South Service Drive Bridge
MAINTENANCE OF TRAFFIC

SHEET T.04 of 12 SHEETS
CONTRACT NO. PW-7001
ASSIGNMENT NO.
DATE 05/24/2019



DETAIL 2a
TYPICAL FOR CLOSURE OF (TAPERED OR PARRALLEL DECEL LANE) FREEWAY EXIT RAMP
 APPLIES: WB I-96 EXIT TO NB EVERGREEN



DETAIL 2b
TYPICAL FOR CLOSURE OF FREEWAY EXIT RAMP
WHEN A LANE IS BEING DROPPED
 APPLIES: WB I-96 EXIT RAMP TO NB AND SB EVERGREEN
 EB I-96 EXIT RAMP TO EVERGREEN

PW-7001

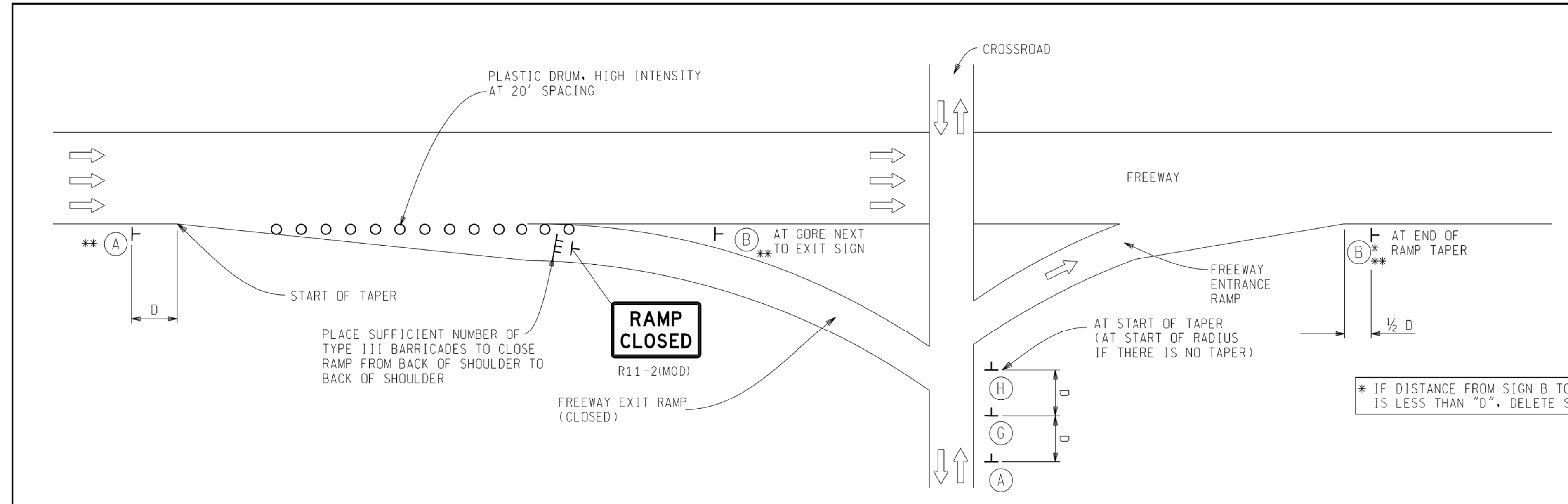
AS-LET PLAN REVISIONS (SUBMITTAL DATE:)							NO SCALE	DATE: 07/02/2015	CS: R01 OF 82122	DETAIL 2	DRAWING	SHEET				
NO.	DATE	AUTH	DESCRIPTION	NO.	DATE			DESCRIPTION	DESIGN UNIT: MAHDAVI	JN: 122645A	EVERGREEN ROAD OVER I-96 & CSX RR	MT 19	SECT 1			
											TSC: TAYLOR		TYPICAL RAMP CLOSURES		58	

DESCRIPTION	NO.	DATE	BY	CHECKED BY	APPROVED
PLAN					
GRADE					
ESTIMATE					
FINAL					

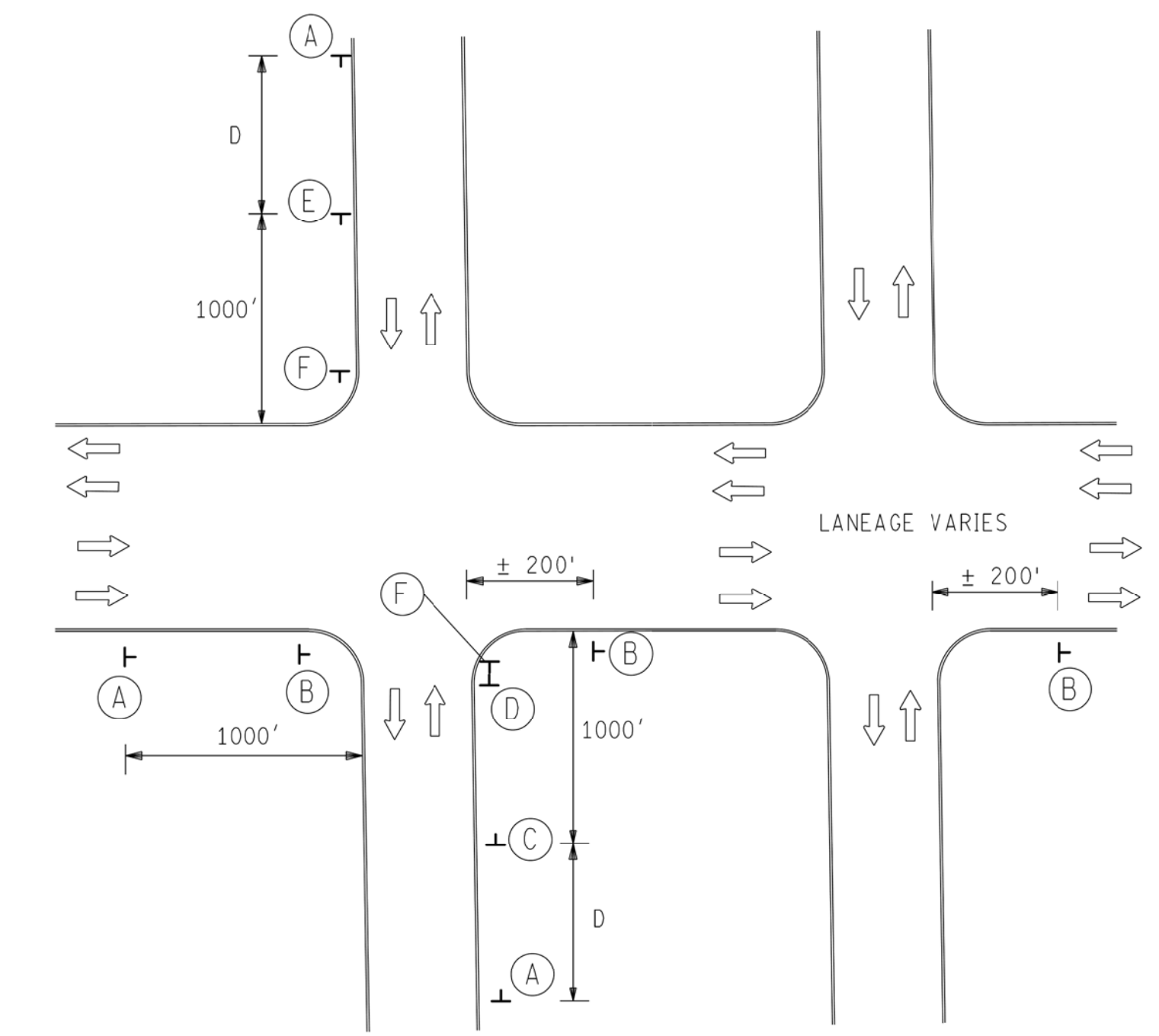
CITY OF DETROIT
 CITY ENGINEERING DIVISION - D.P.W.
 BUREAUS OF STREETS AND HIGHWAYS
 FOR

South Service Drive Bridge
MAINTENANCE OF TRAFFIC

SHEET 7.05 of 12 SHEETS
 CONTRACT NO. PW-7001
 ASSIGNMENT NO.
 DATE 05/24/2019

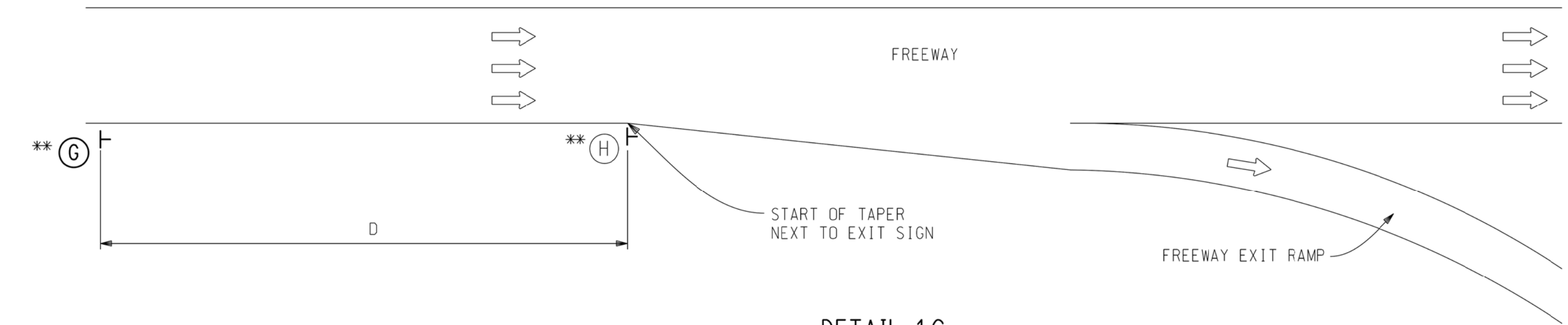


DETAIL 1A
TYPICAL DETOUR SIGN
PLACEMENT AT RAMPS

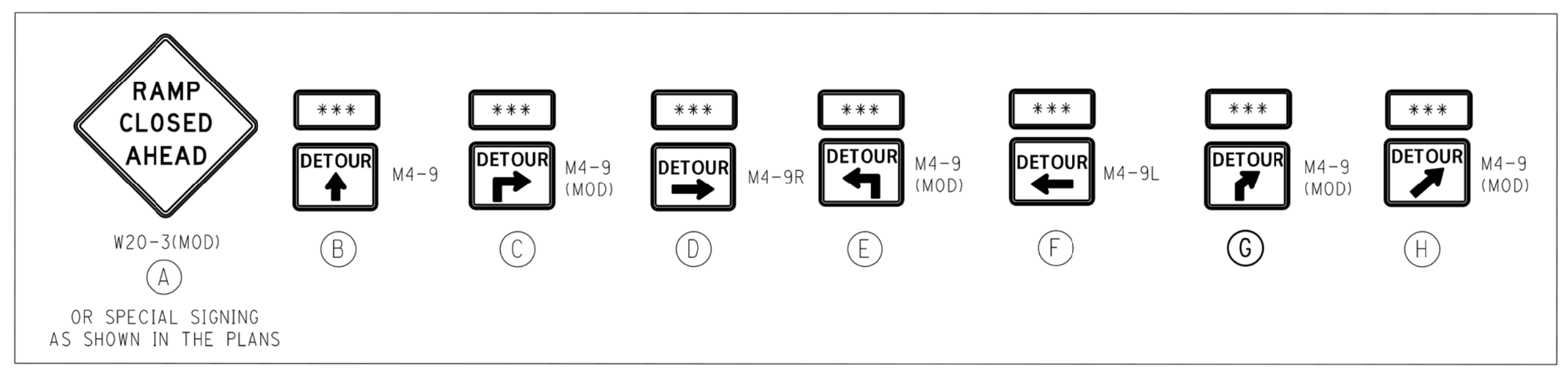


DETAIL 1B
TYPICAL DETOUR SIGN
PLACEMENT ON NON-FREEWAY ROADWAYS

IF AN INTERSECTING ROADWAY IS CONTROLLED BY A STOP SIGN THEN PLACE SIGNS "B", "D", AND/OR "F" A MINIMUM OF 100' IN ADVANCE OF THE EXISTING STOP SIGN. DO NOT BLOCK OR DISTRACT FROM THE STOP SIGN.



DETAIL 1C
TYPICAL DETOUR SIGN
PLACEMENT AT EXIT RAMPS



** LARGER M4-8 AND M4-9 SIGNS AND SUPPLEMENTAL PLAQUES SHALL BE USED ON THE FREEWAY.
*** SUPPLEMENTAL PLAQUE AS SHOWN ON THE ACTUAL DETOUR PLANS.

DETAIL 1
TYPICAL PLACEMENT
OF DETOUR SIGNS

- NOTES:
- ADJUSTMENTS TO DISTANCES SHOWN MAY BE NECESSARY AS DIRECTED BY THE ENGINEER DUE TO FIELD CONDITIONS.
 - SEE MOT TYPICAL M0020a FOR "D" DISTANCES.
 - DETOUR SIGNS SHOWN ARE FOR PURPOSES OF ILLUSTRATING PLACEMENT OF SIGNS. SEE DETOUR SIGNING PLANS FOR ACTUAL DETOUR SIGNS TO BE PLACED.

AS-LET PLAN REVISIONS (SUBMITTAL DATE:)				Access ENGINEERING, INC.		MDOT Michigan Department of Transportation		NO SCALE		DATE: 07/02/2015	CS: R01 OF 82122	DETAIL 1		DRAWING	SHEET
NO.	DATE	AUTH	DESCRIPTION	NO.	DATE	AUTH	DESCRIPTION	FILE: 122645_R01_1.dgn	DESIGN UNIT: MAHDAVI	JN: 122645A	EVERGREEN ROAD OVER I-96 & CSX RR		MT 18	SECT 1	57
												DETOUR SIGN PLACEMENT			

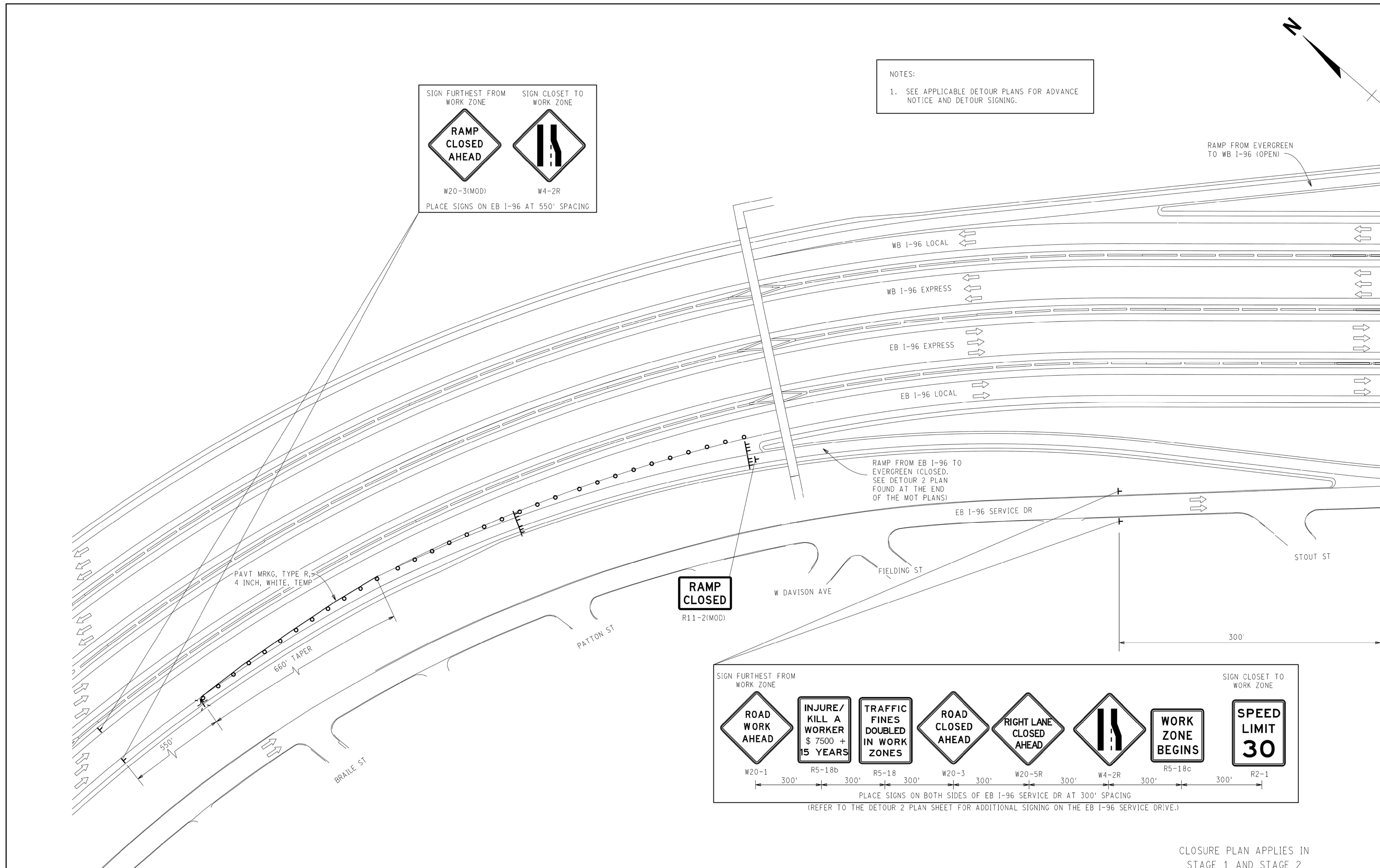
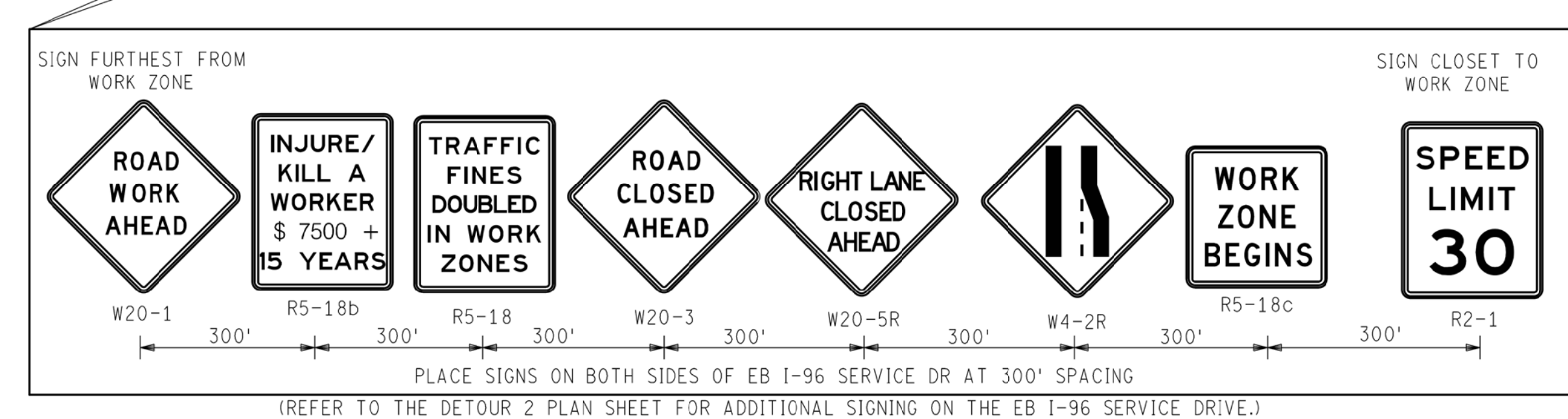
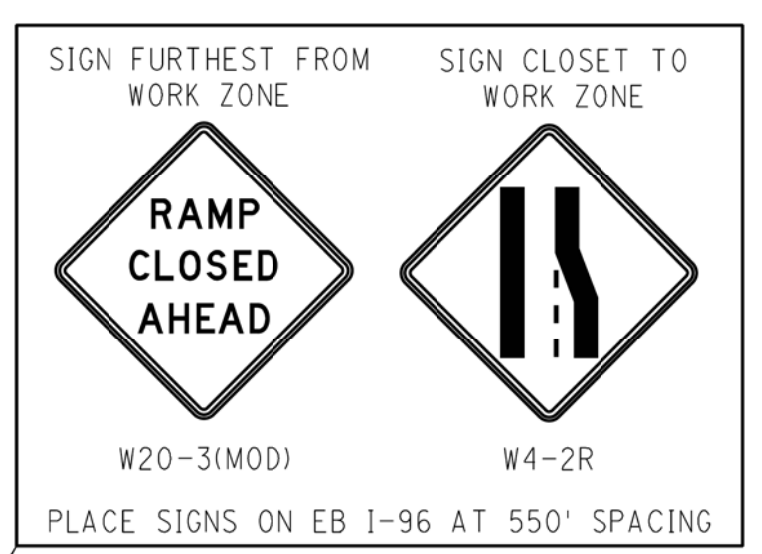
DESCRIPTION	OR	NO.	DATE	APPROVED
REVISIONS				
PLAN	BY	CHECKED BY	APPROVED	
GRADE			ENGINEER BY STREET	
ESTIMATE				
FINAL	****	****		

CITY OF DETROIT
CITY ENGINEERING DIVISION - O.P.W.
BUREAUS OF STREETS AND HIGHWAYS
FOR

South Service Drive Bridge
MAINTENANCE OF TRAFFIC

SHEET T.06 OF 12 SHEETS
CONTRACT NO. PW-7001
ASSIGNMENT NO.
DATE 05/24/2019

NOTES:
1. SEE APPLICABLE DETOUR PLANS FOR ADVANCE NOTICE AND DETOUR SIGNING.



CLOSURE PLAN APPLIES IN
STAGE 1 AND STAGE 2

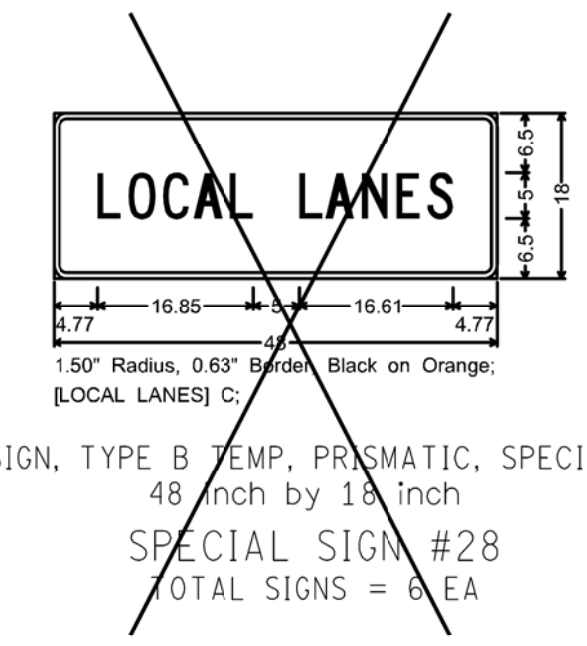
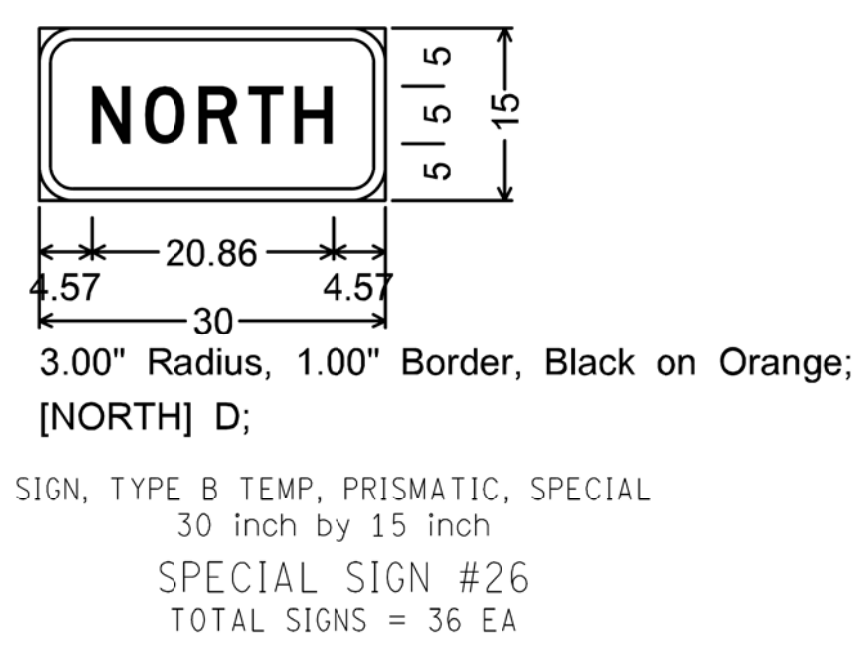
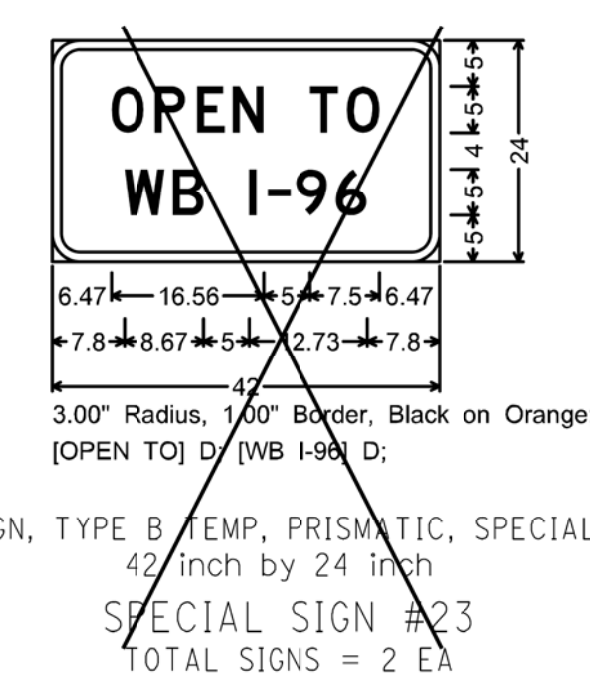
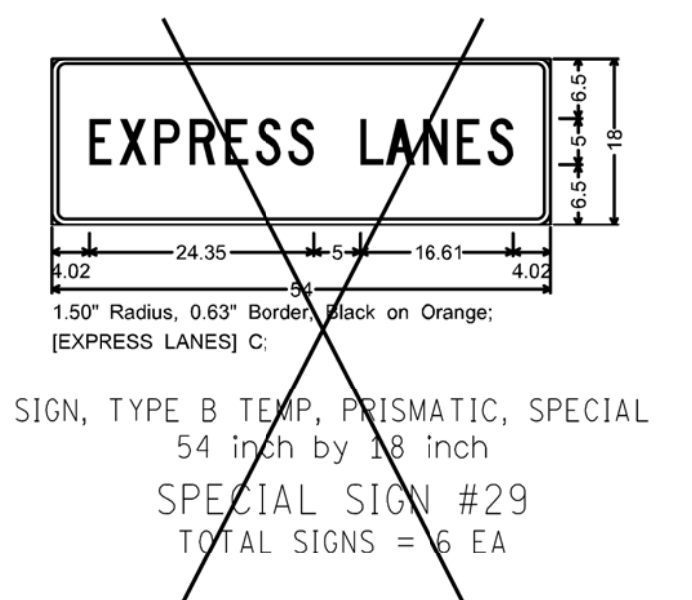
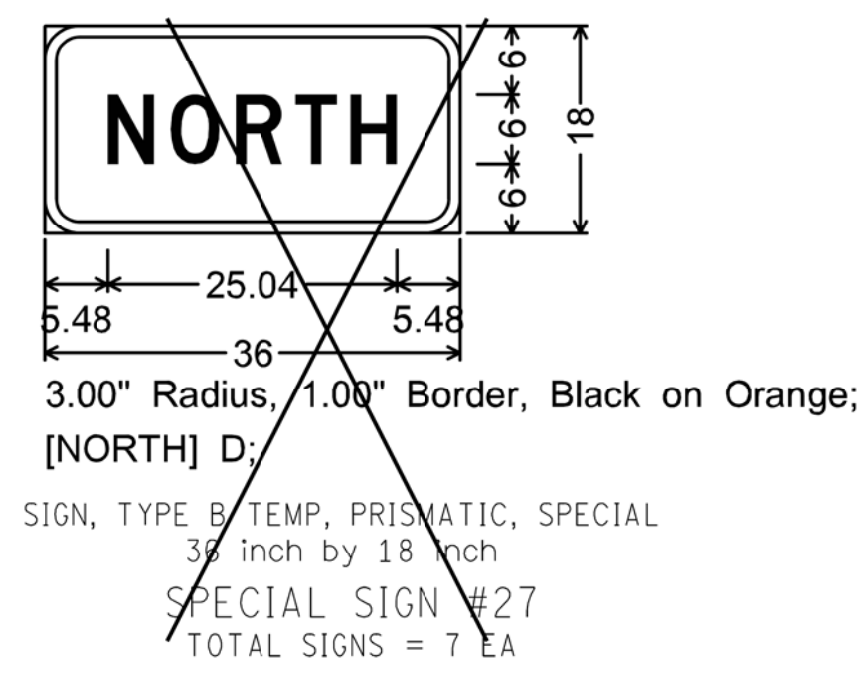
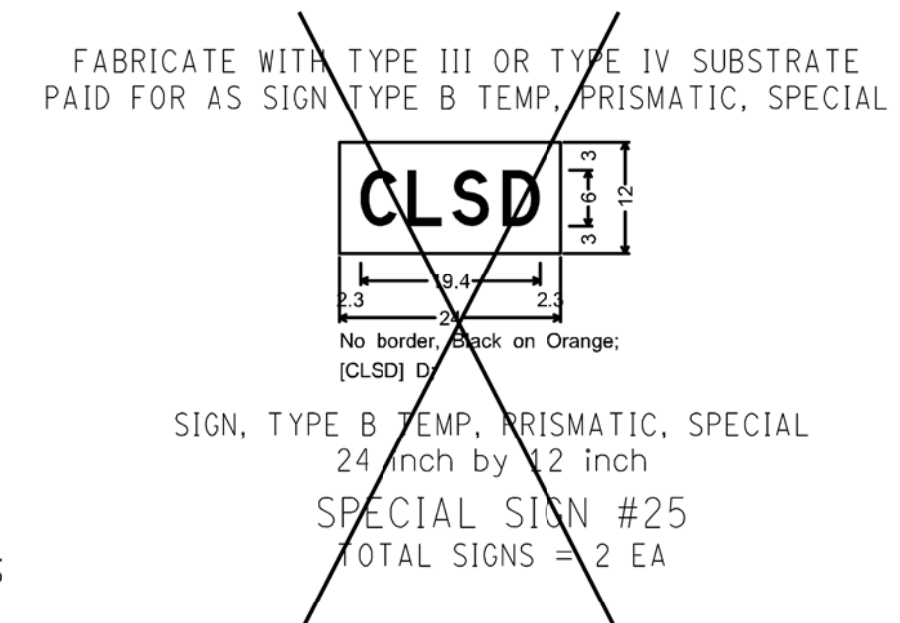
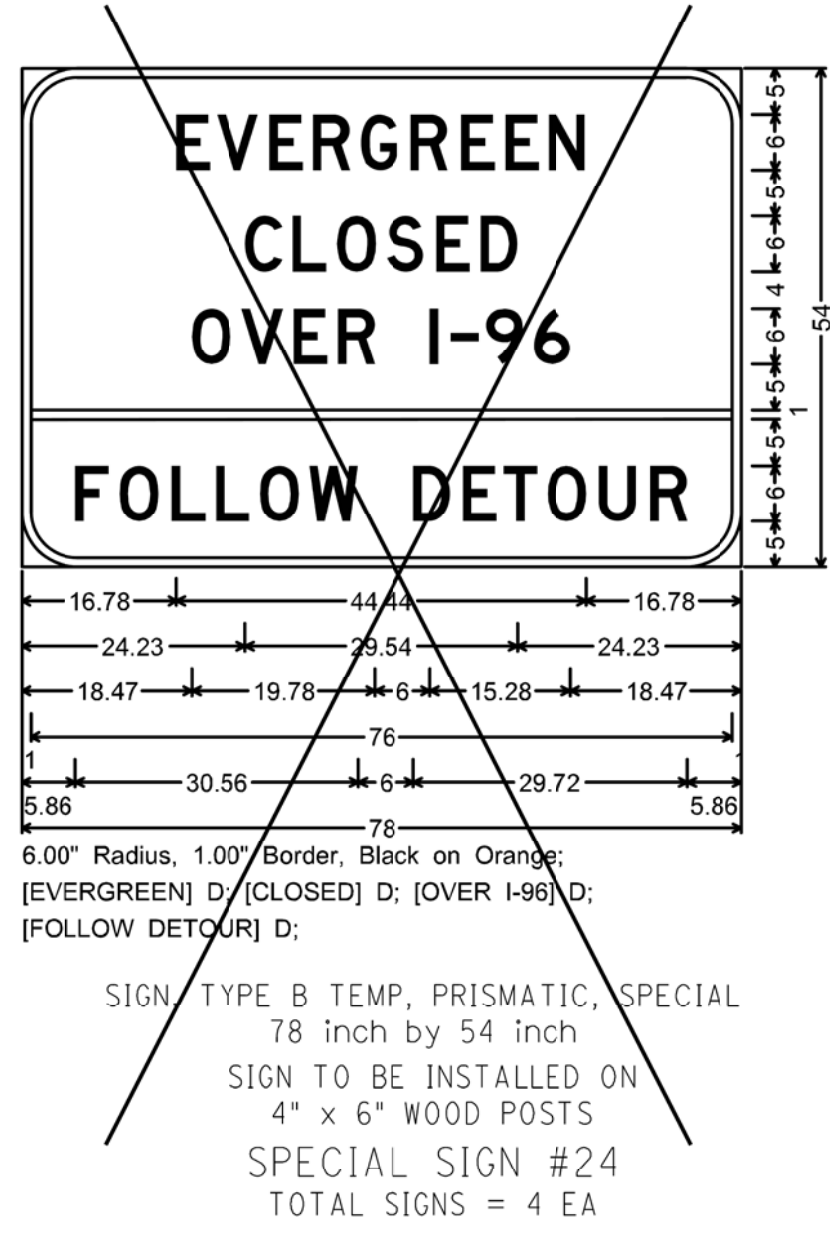
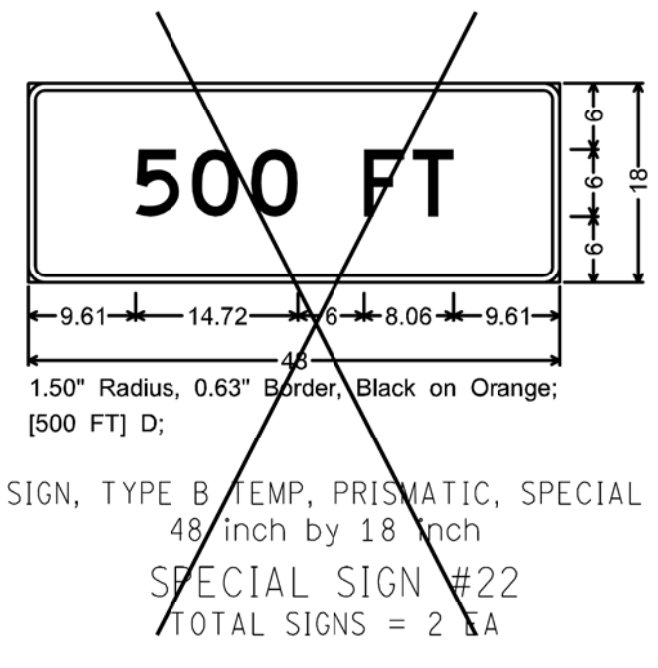
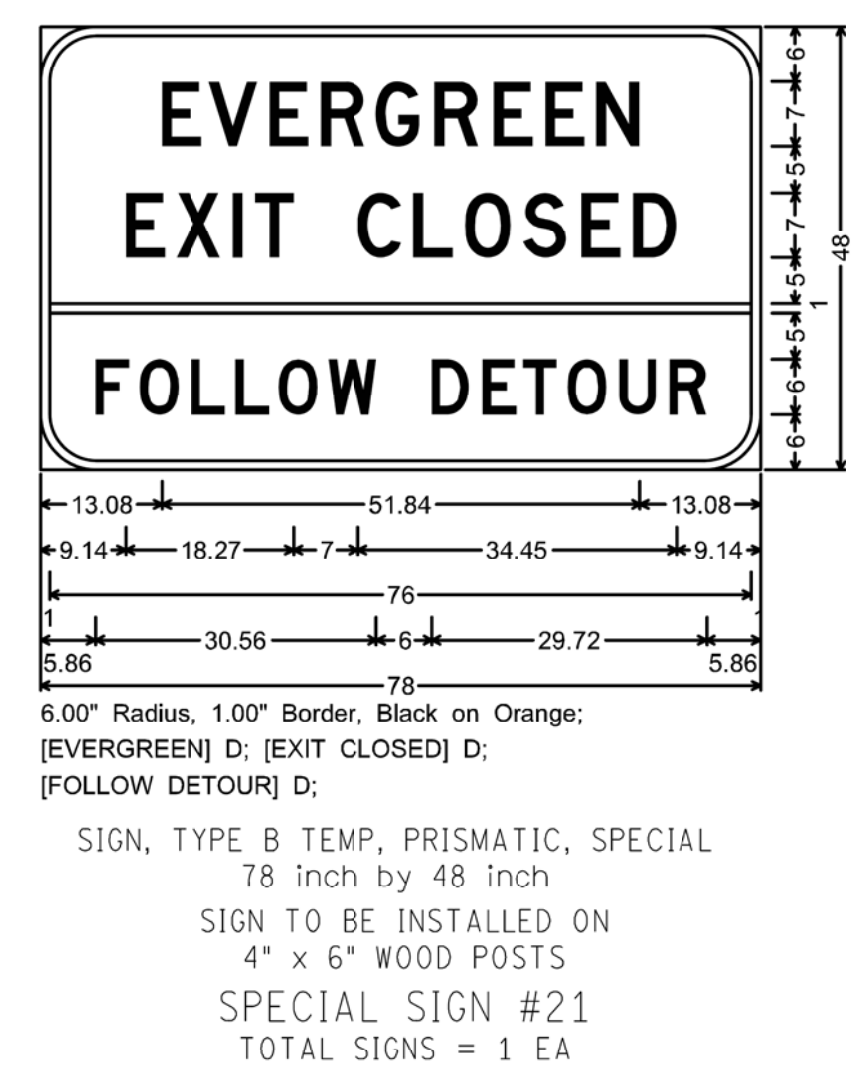
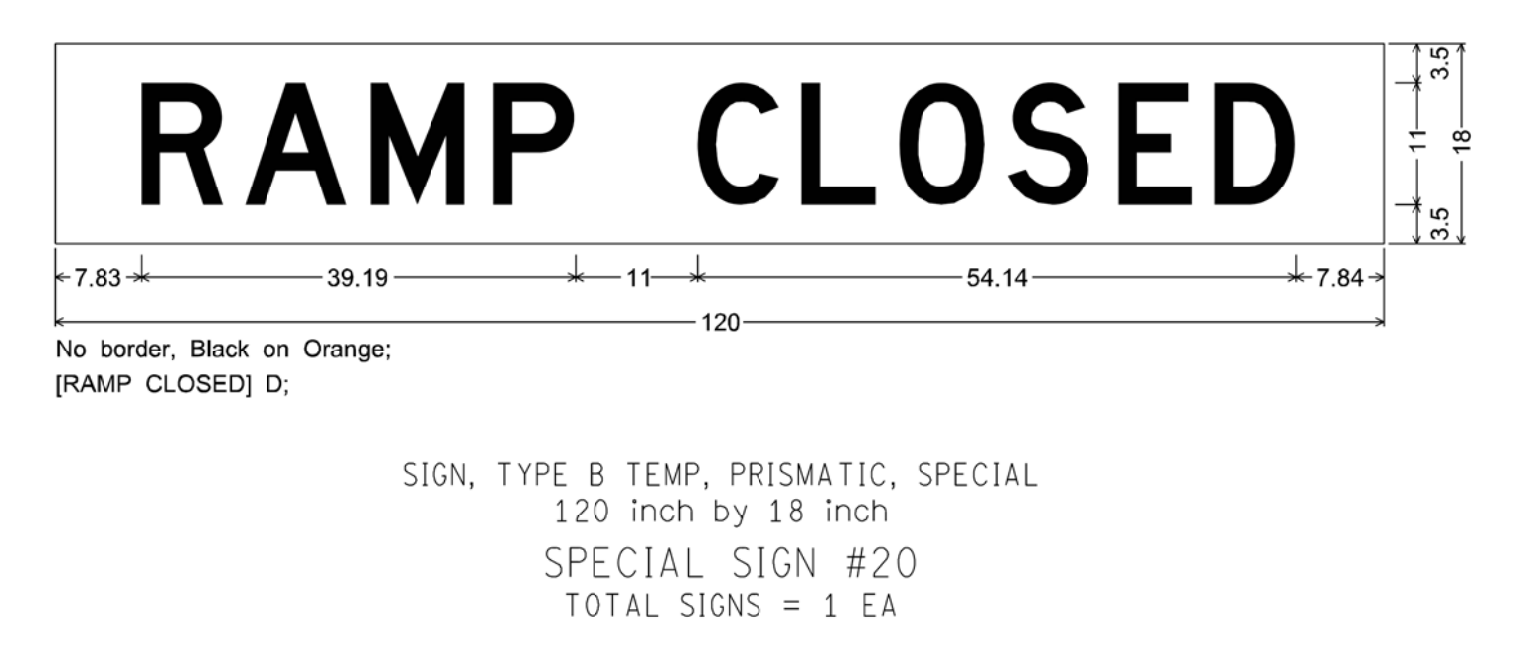
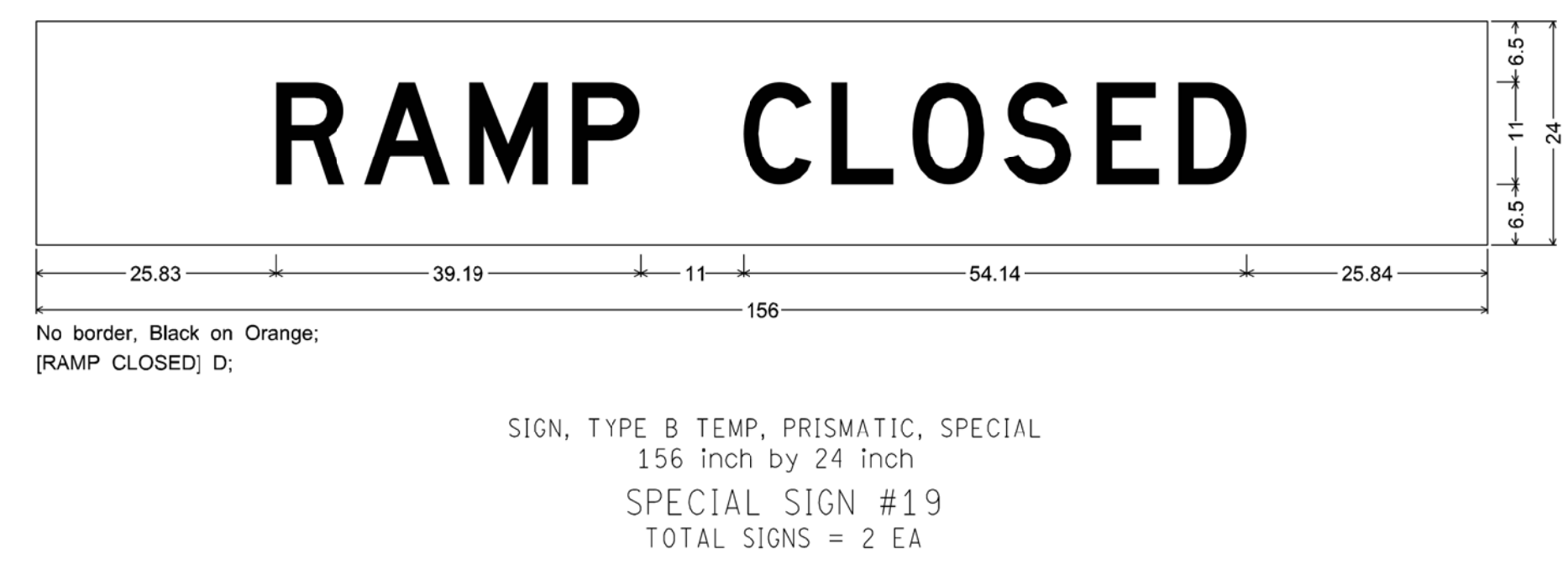
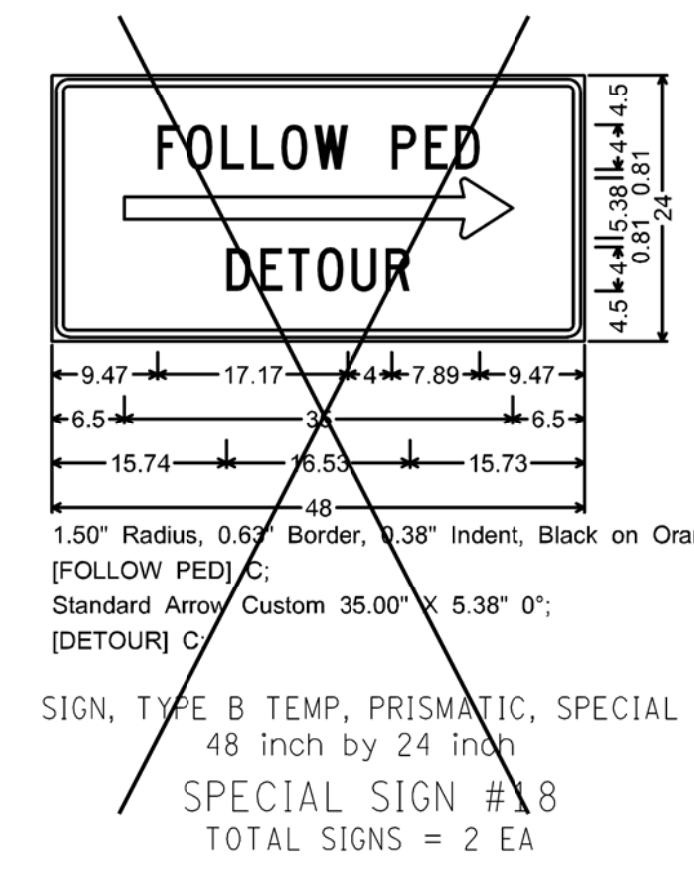
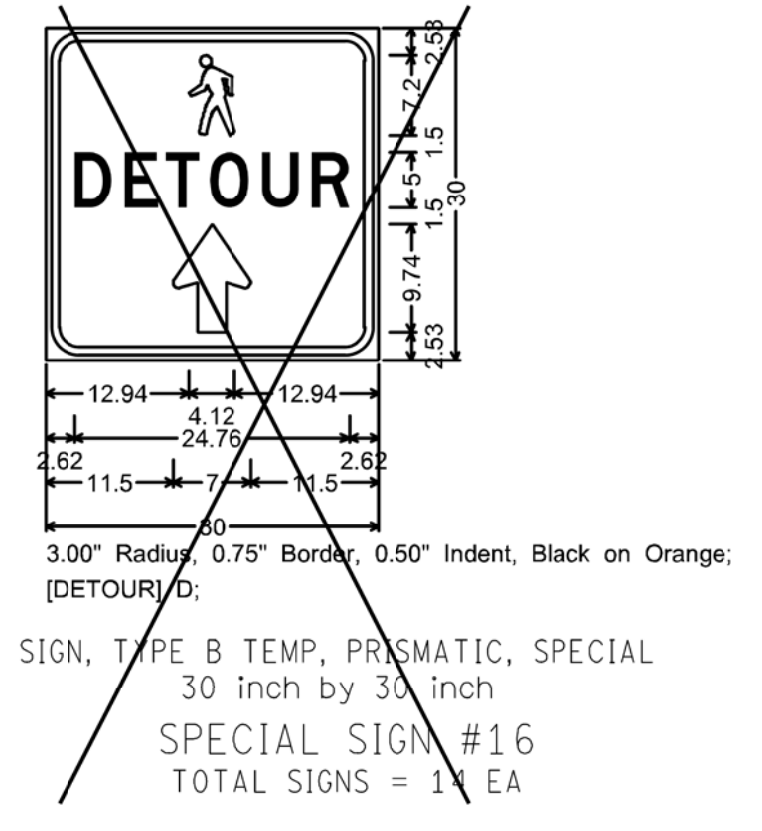
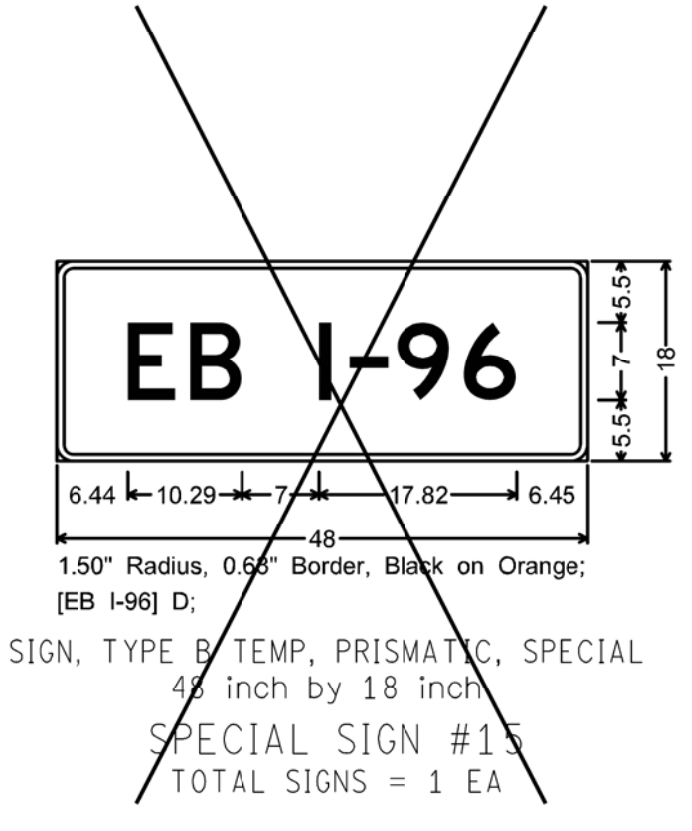
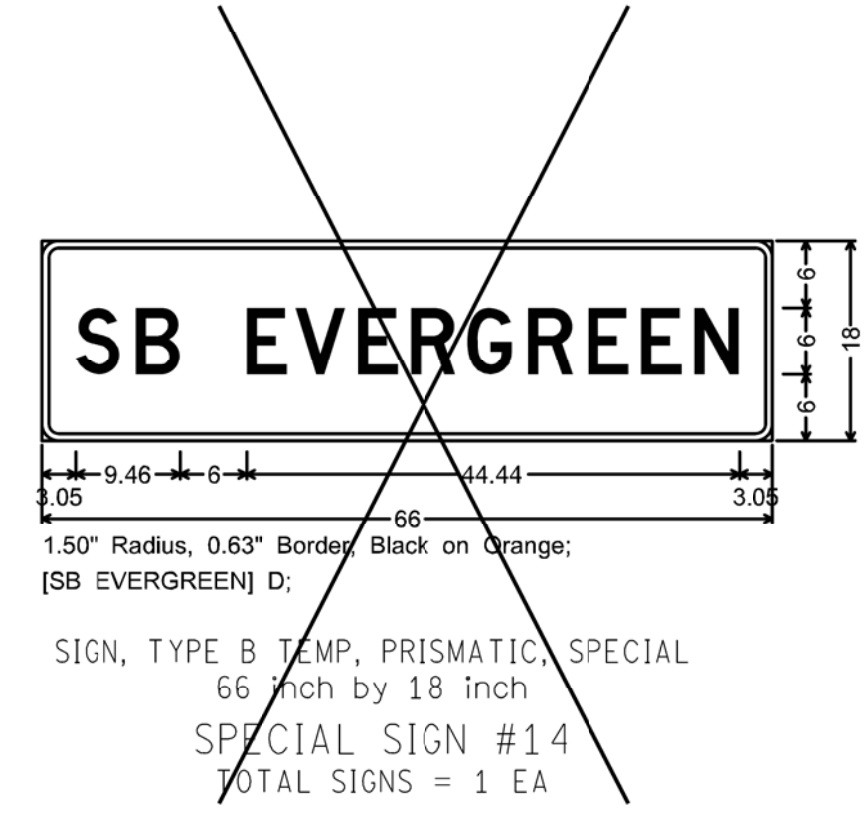
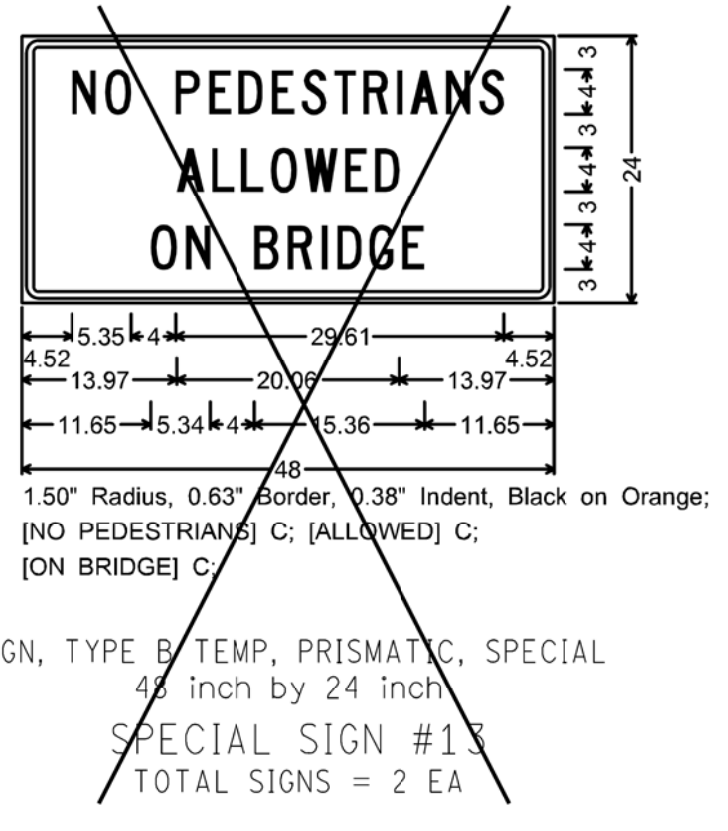
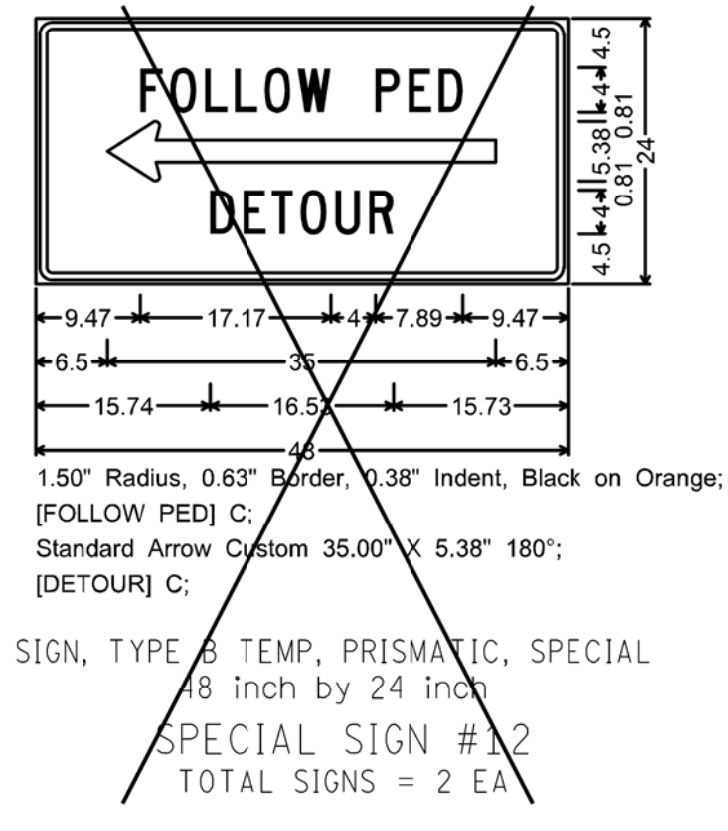
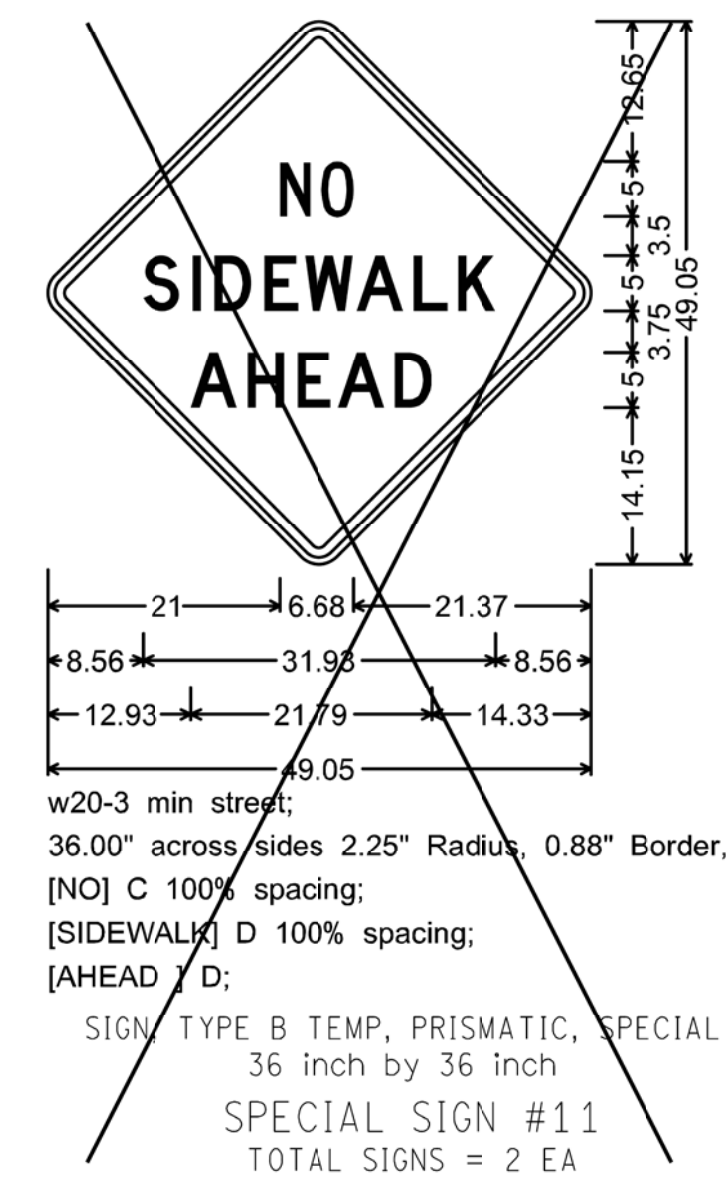
AS-LET PLAN REVISIONS (SUBMITTAL DATE:)				DATE: 07/02/2015	CS: R01 OF 82122	DETAIL 6	DRAWING SHEET						
NO.	DATE			AUTH	DESCRIPTION	NO.	DATE	AUTH	DESCRIPTION	FILE: 122645_EB_Serv_Dr_CLS_SHT_A.dgn	DESIGN UNIT: MAHDAVI	JN: 122645A	EVERGREEN ROAD OVER I-96 & CSX RR

DESCRIPTION	OR CHECK DATE	DATE	BY	CHECKED BY	APPROVED
PLAN					
GRADE					
ESTIMATE					
FINAL					

CITY OF DETROIT
CITY ENGINEERING DIVISION - D.P.W.
BUREAUS OF STREETS AND HIGHWAYS
FOR

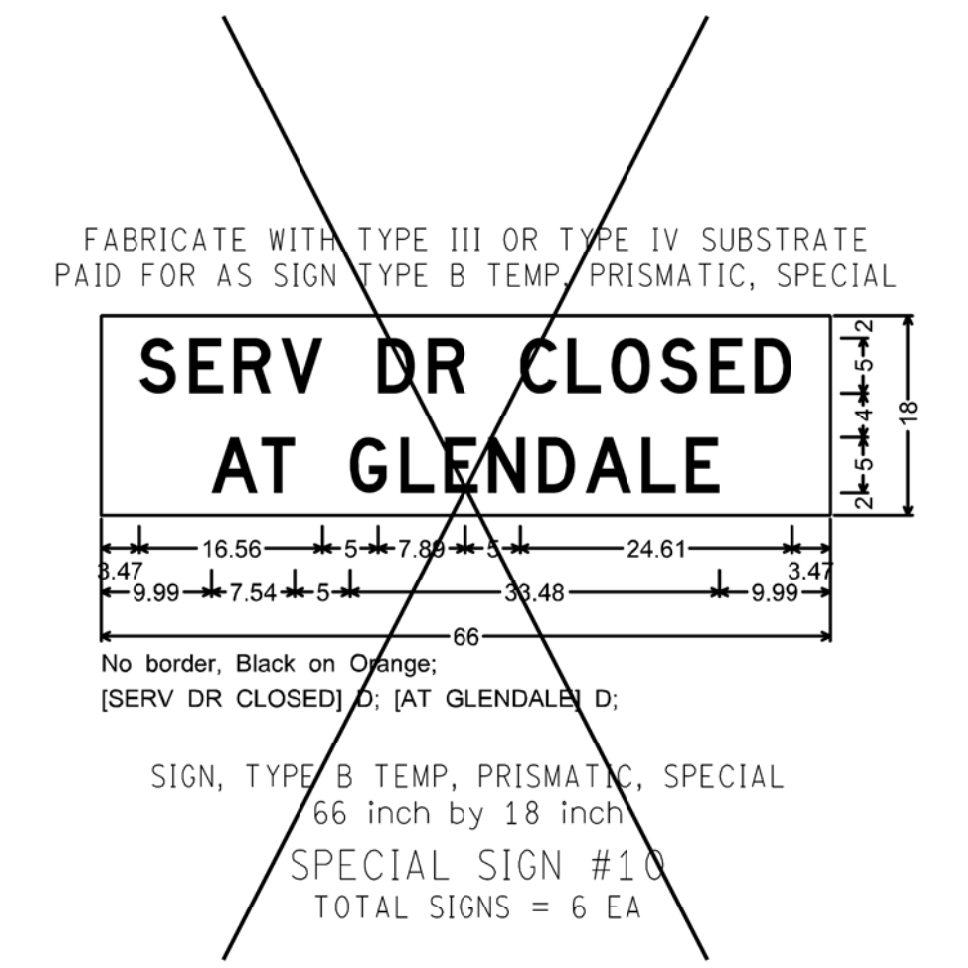
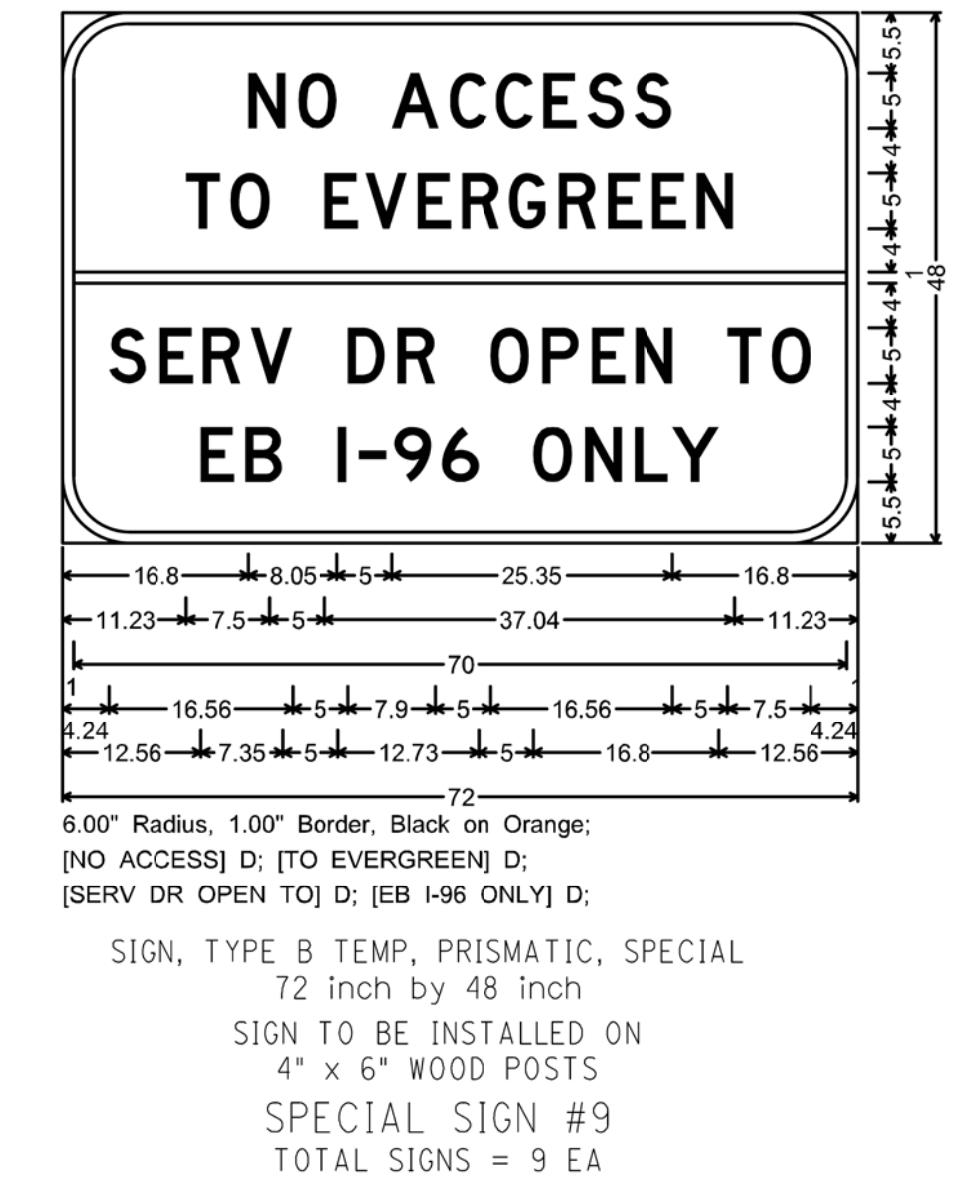
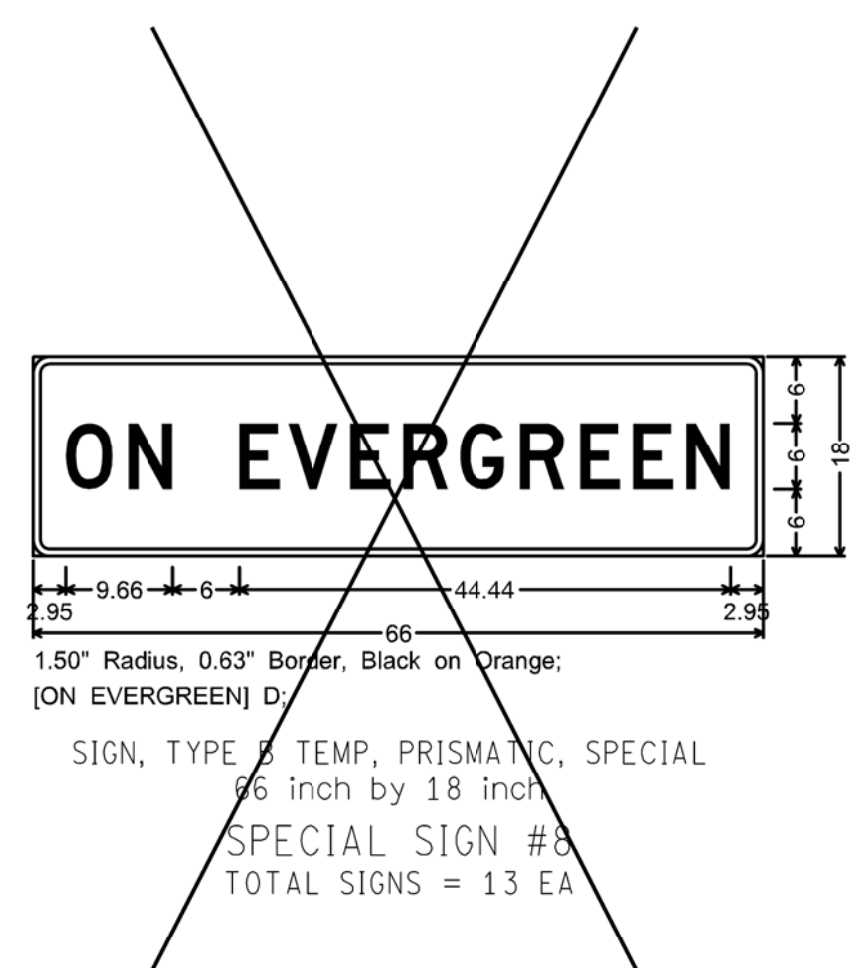
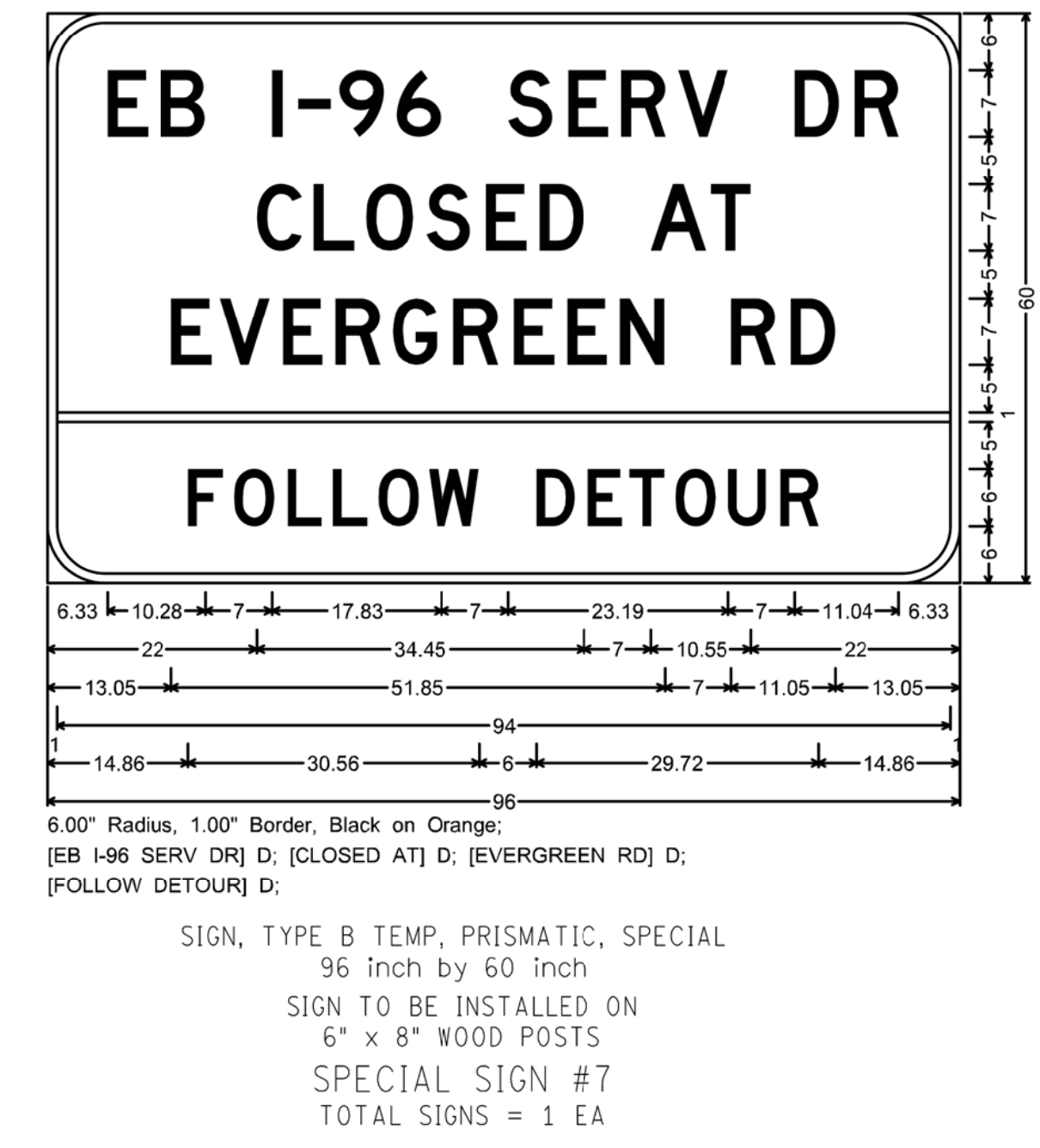
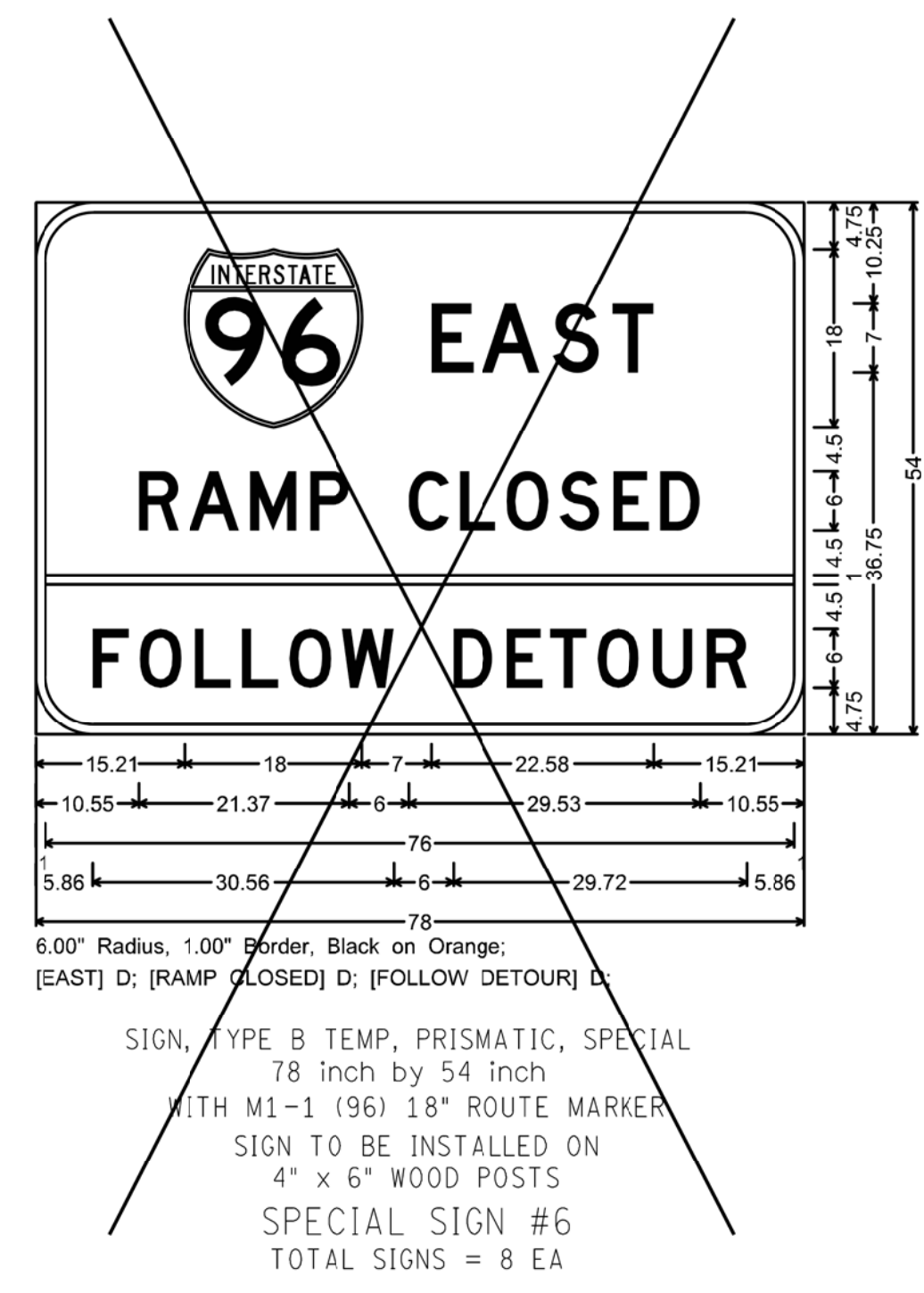
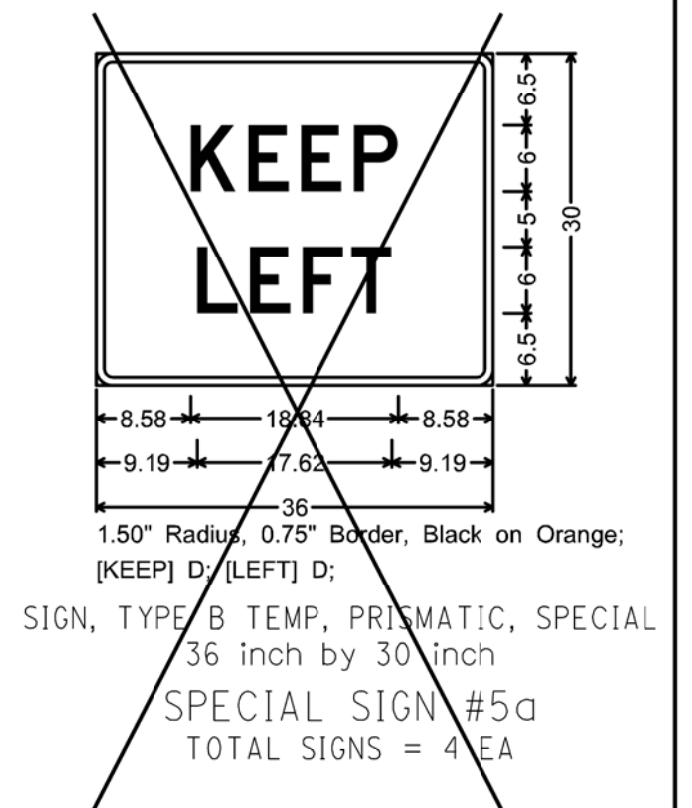
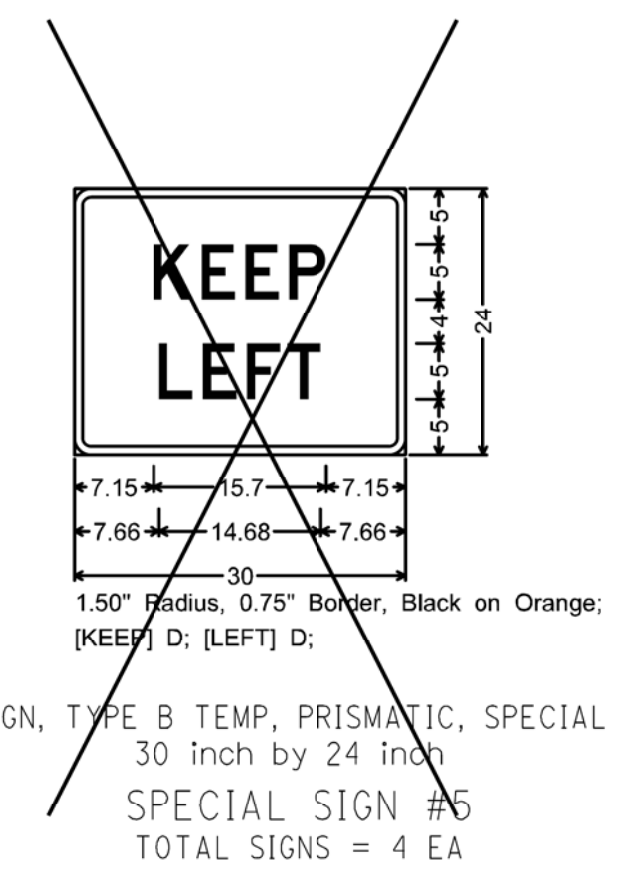
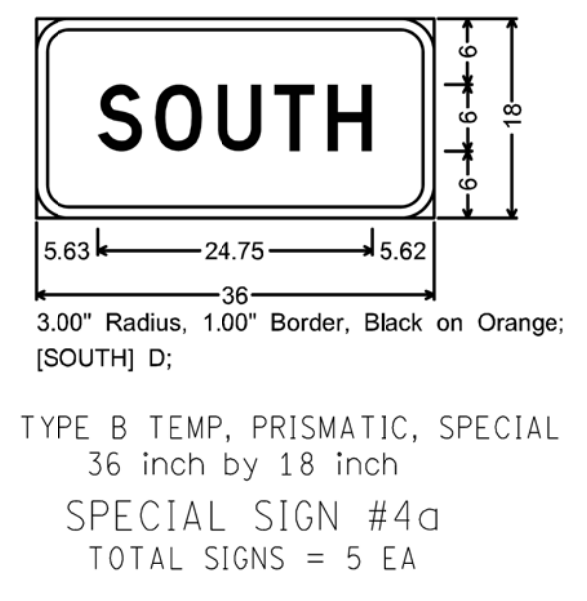
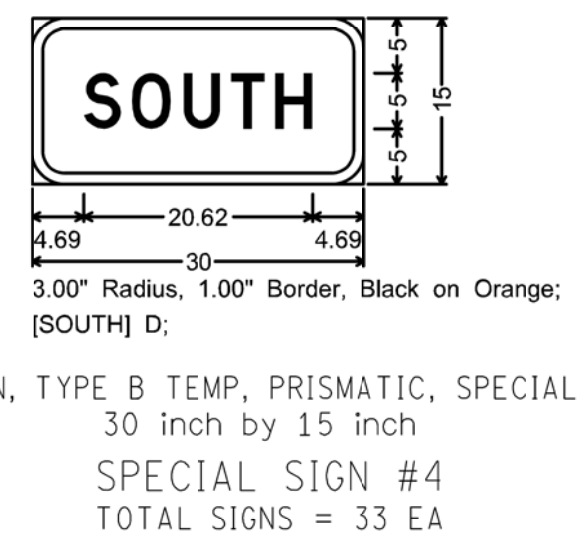
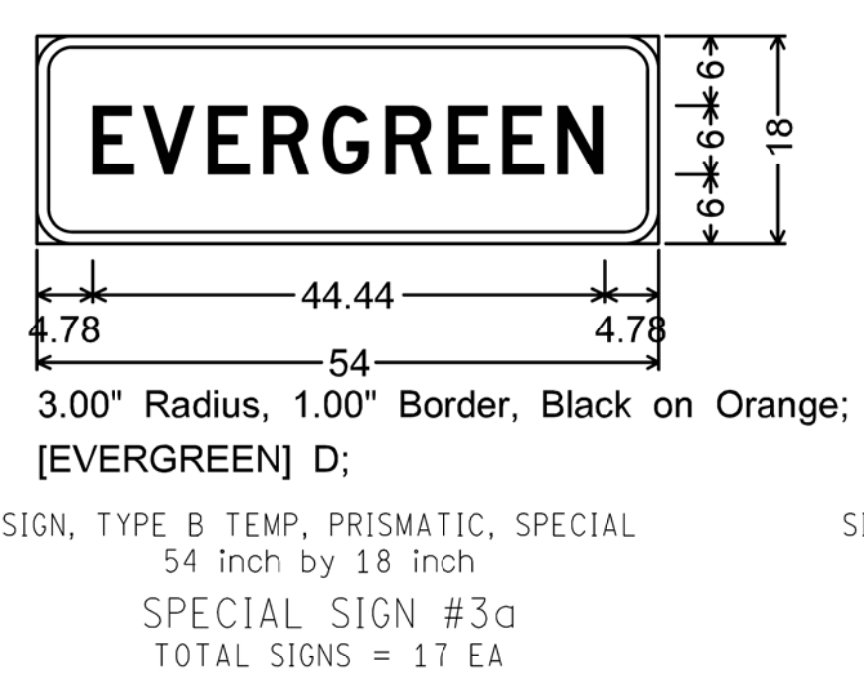
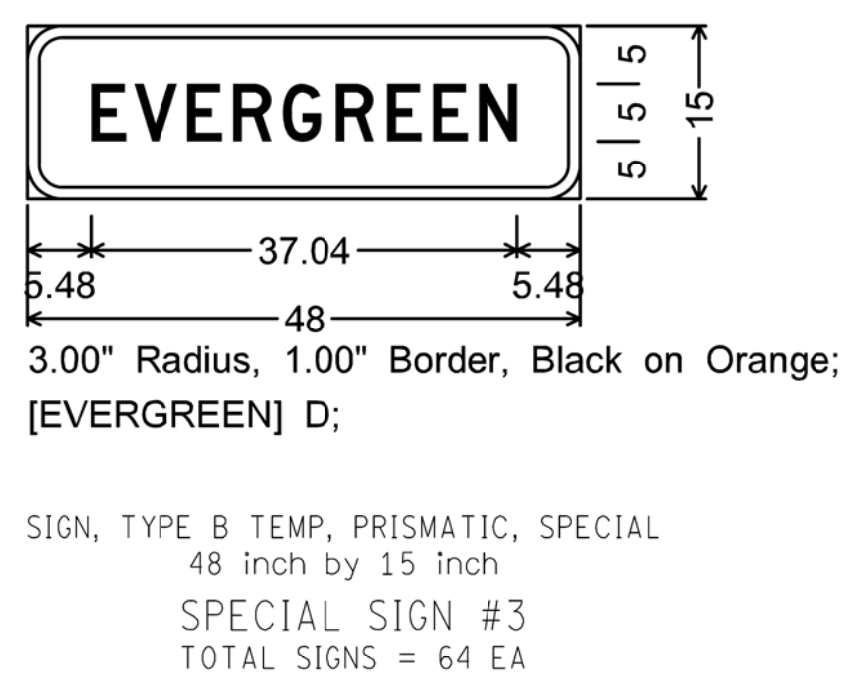
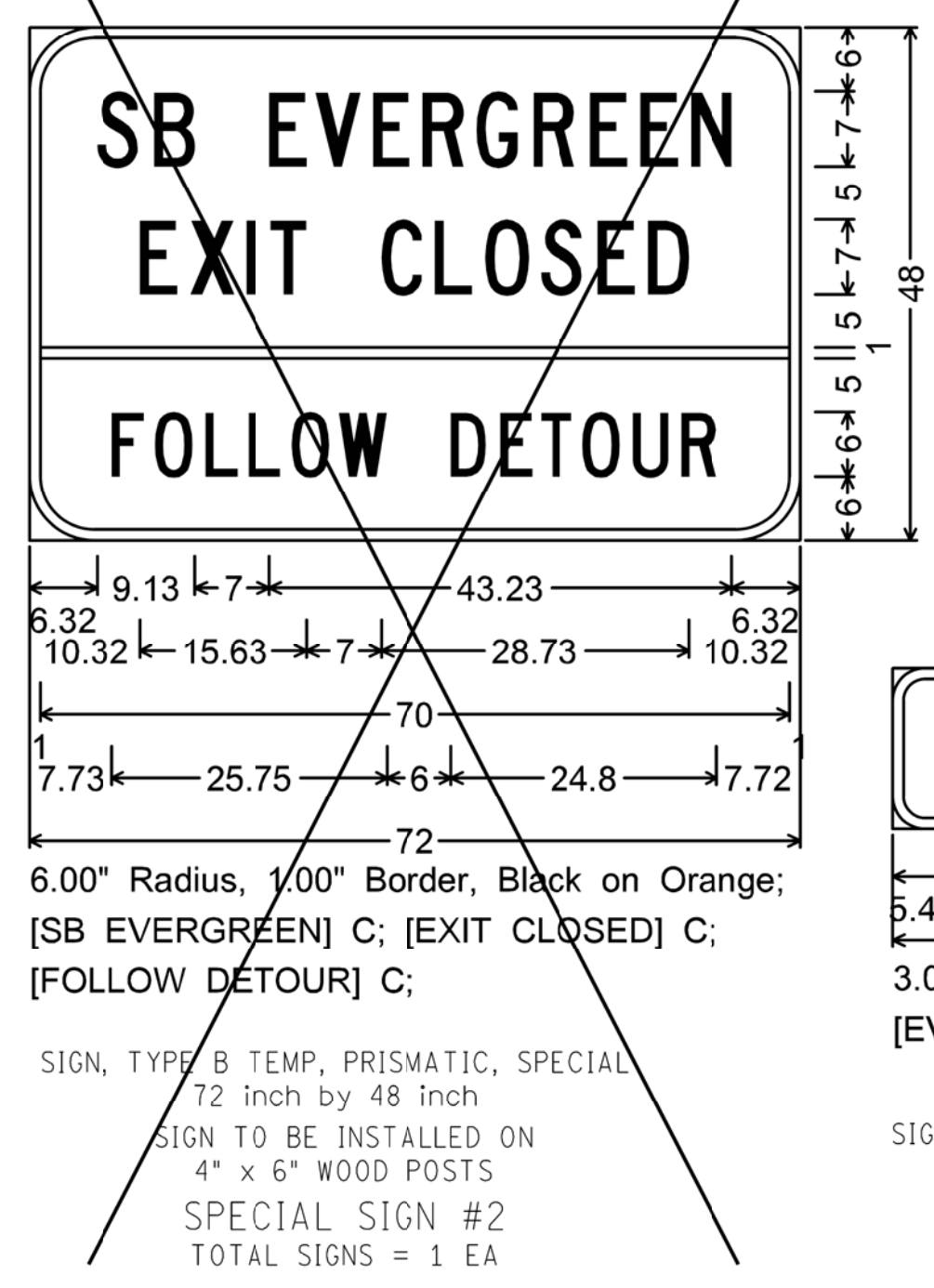
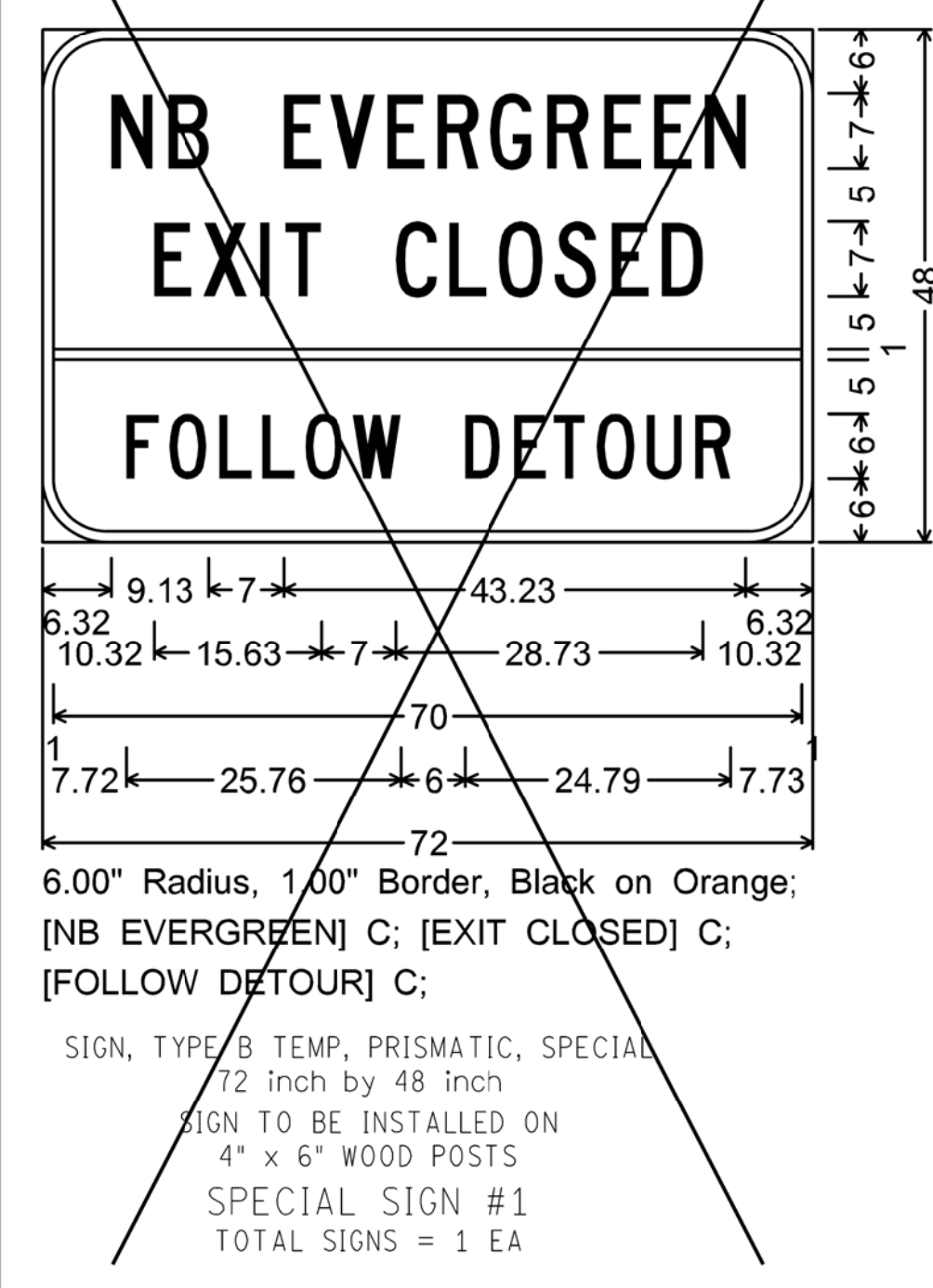
South Service Drive Bridge
MAINTENANCE OF TRAFFIC

SHEET T.07 OF 12 SHEETS
CONTRACT NO. PW-7001
ASSIGNMENT NO.
DATE 05/24/2019



AS-LET PLAN REVISIONS (SUBMITTAL DATE:)				Access ENGINEERING, INC		MDOT Michigan Department of Transportation		NO SCALE		DATE: 07/02/2015	CS: R01 OF 82122	MAINTAINING TRAFFIC		DRAWING SHEET
NO.	DATE	AUTH	DESCRIPTION	NO.	DATE	AUTH	DESCRIPTION			DESIGN UNIT: MAHDAVI	JN: 122645A	EVERGREEN ROAD OVER I-96 & CSX RR		MT SECT 1
										TSC: TAYLOR		SPECIAL SIGN LAYOUT DETAILS		28 67

DESCRIPTION		DR	CHK	DATE	BY	CHECKED BY	APPROVED	CITY OF DETROIT CITY ENGINEERING DIVISION - D.P.W. BUREAUS OF STREETS AND HIGHWAYS FOR		South Service Drive Bridge MAINTENANCE OF TRAFFIC		SHEET 7.08 OF 12 SHEETS CONTRACT NO. PW-7001 ASSIGNMENT NO. DATE 05/24/2019	
PLAN	GRADE	ESTIMATE	FINAL										



AS-LET PLAN REVISIONS (SUBMITTAL DATE:)			
NO.	DATE	AUTH	DESCRIPTION

Access
ENGINEERING, INC.

MDOT
Michigan Department of Transportation

NO SCALE

DATE: 07/02/2015
DESIGN UNIT: MAHDAVI
TSC: TAYLOR

CS: R01 OF 82122
JN: 122645A

MAINTAINING TRAFFIC
EVERGREEN ROAD OVER I-96 & CSX RR
SPECIAL SIGN LAYOUT DETAILS

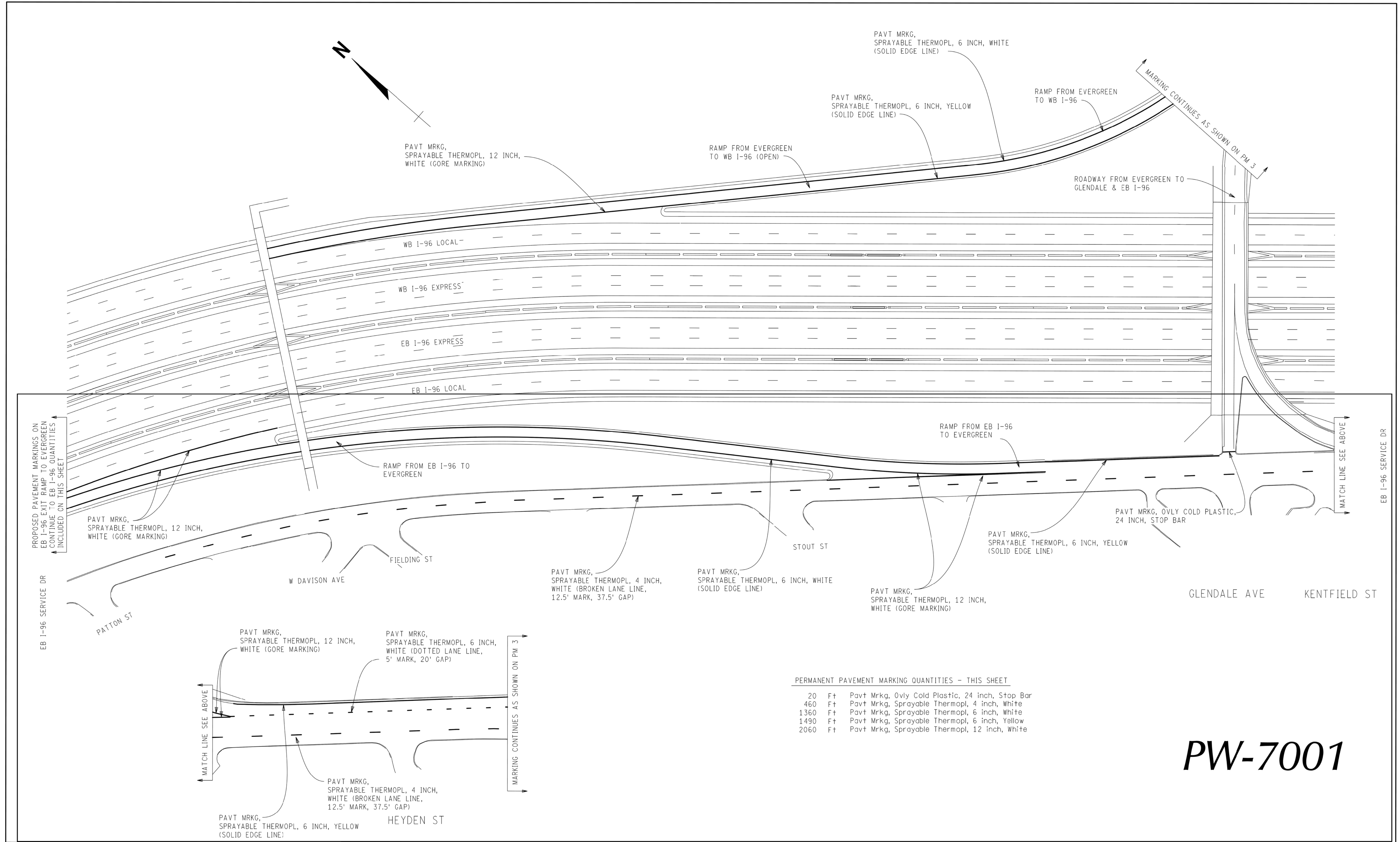
DRAWING SHEET
MT SECT 1
27 66

DESCRIPTION	DR	CHK	DATE	BY	CHECKED BY	APPROVED

CITY OF DETROIT
CITY ENGINEERING DIVISION - D.P.W.
BUREAUS OF STREETS AND HIGHWAYS
FOR

South Service Drive Bridge
MAINTENANCE OF TRAFFIC

SHEET 7.09 of 12 SHEETS
CONTRACT NO. PW-7001
ASSIGNMENT NO.
DATE 05/24/2019



PERMANENT PAVEMENT MARKING QUANTITIES - THIS SHEET

20 Ft	Pavt Mrkg, Ovly Cold Plastic, 24 inch, Stop Bar
460 Ft	Pavt Mrkg, Sprayable Thermopl, 4 inch, White
1360 Ft	Pavt Mrkg, Sprayable Thermopl, 6 inch, White
1490 Ft	Pavt Mrkg, Sprayable Thermopl, 6 inch, Yellow
2060 Ft	Pavt Mrkg, Sprayable Thermopl, 12 inch, White

PW-7001

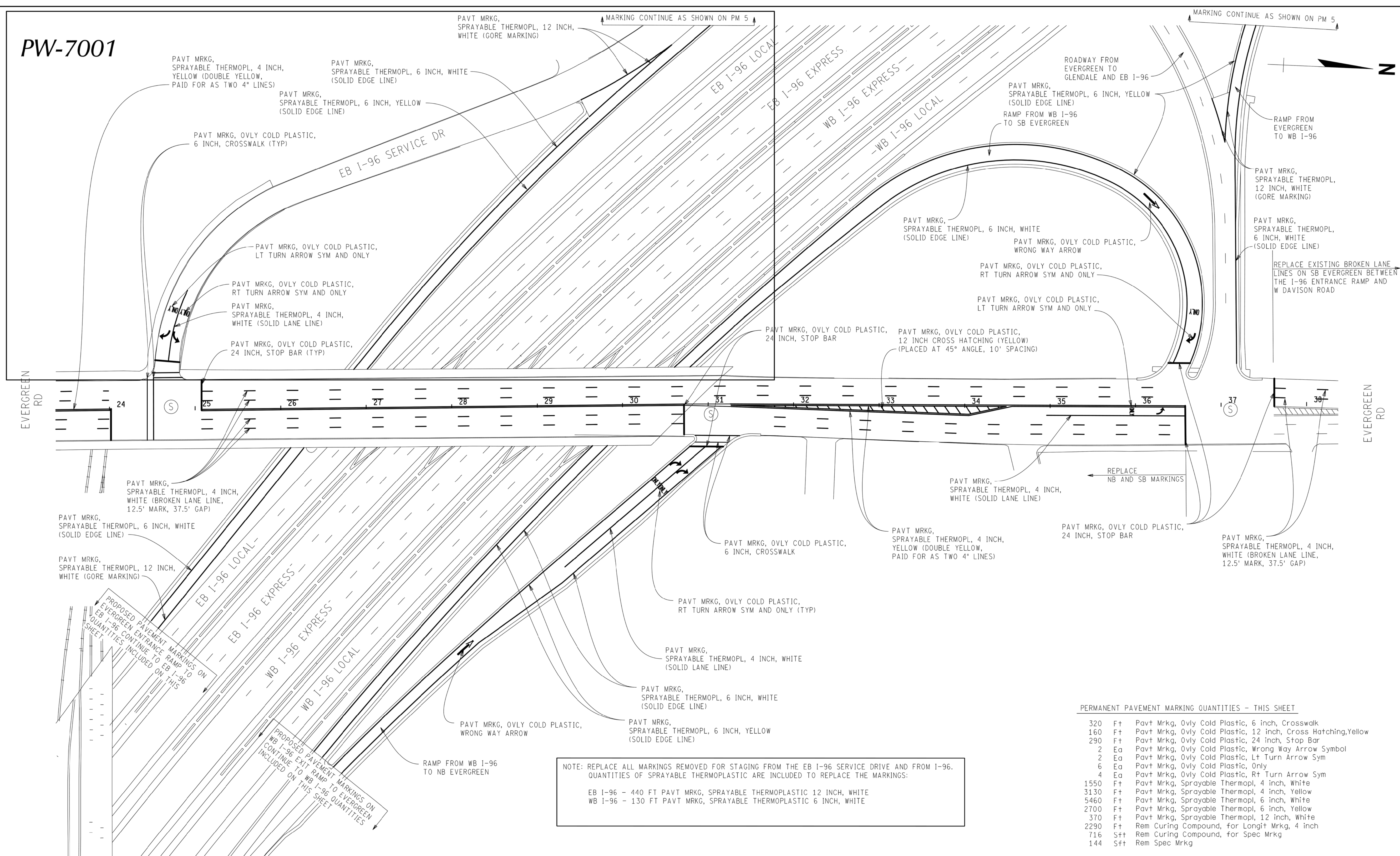
AS-LET PLAN REVISIONS (SUBMITTAL DATE:)				Access ENGINEERING, INC		MDOT Michigan Department of Transportation		0 VERT. (FT)		DATE: 07/02/2015		CS: R01 OF 82122		FINAL PAVEMENT MARKING		DRAWING SHEET	
NO.	DATE	AUTH	DESCRIPTION	NO.	DATE	AUTH	DESCRIPTION	0 HORZ. (FT) 100		DESIGN UNIT: MAHDAVI		JN: 122645A		EVERGREEN ROAD OVER I-96 & CSX RR		PM 5 SECT 1	
								FILE: 122645_R01_FPM_sht 5.dgn		TSC: TAYLOR				EB I-96 SERVICE DRIVE		72	

DESCRIPTION	DR	CHK	APP	DATE	BY	CHECKED BY	APPROVED
PLAN							
GRADE							
ESTIMATE							
FINAL							

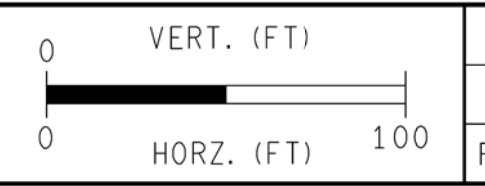
CITY OF DETROIT
 CITY ENGINEERING DIVISION - D.P.W.
 BUREAUS OF STREETS AND HIGHWAYS
 FOR

South Service Drive Bridge
MAINTENANCE OF TRAFFIC

SHEET **T.11** OF 12 SHEETS
 CONTRACT NO. **PW-7001**
 ASSIGNMENT NO.
 DATE **05/24/2019**



AS-LET PLAN REVISIONS		(SUBMITTAL DATE:)	
NO.	DATE	AUTH	DESCRIPTION



DATE: 07/02/2015
 DESIGN UNIT: MAHDAVI
 TSC: TAYLOR

CS: R01 OF 82122
 JN: 122645A

FINAL PAVEMENT MARKING
 EVERGREEN ROAD OVER I-96 & CSX RR
 STA 23+37 TO STA 38+37

DRAWING SHEET
 PM 3 SECT 1
 70

320	Ft	Pav't Mrkg, Ovly Cold Plastic, 6 inch, Crosswalk
160	Ft	Pav't Mrkg, Ovly Cold Plastic, 12 inch, Cross Hatching, Yellow
290	Ft	Pav't Mrkg, Ovly Cold Plastic, 24 inch, Stop Bar
2	Ea	Pav't Mrkg, Ovly Cold Plastic, Wrong Way Arrow Symbol
2	Ea	Pav't Mrkg, Ovly Cold Plastic, Lt Turn Arrow Sym
6	Ea	Pav't Mrkg, Ovly Cold Plastic, Only
4	Ea	Pav't Mrkg, Ovly Cold Plastic, Rt Turn Arrow Sym
1550	Ft	Pav't Mrkg, Sprayable Thermo, 4 inch, White
3130	Ft	Pav't Mrkg, Sprayable Thermo, 4 inch, Yellow
5460	Ft	Pav't Mrkg, Sprayable Thermo, 6 inch, White
2700	Ft	Pav't Mrkg, Sprayable Thermo, 6 inch, Yellow
370	Ft	Pav't Mrkg, Sprayable Thermo, 12 inch, White
2290	Ft	Rem Curing Compound, for Longit Mrkg, 4 inch
716	Sft	Rem Curing Compound, for Spec Mrkg
144	Sft	Rem Spec Mrkg

NOTE: REPLACE ALL MARKINGS REMOVED FOR STAGING FROM THE EB I-96 SERVICE DRIVE AND FROM I-96. QUANTITIES OF SPRAYABLE THERMOPLASTIC ARE INCLUDED TO REPLACE THE MARKINGS.
 EB I-96 - 440 FT PAVT MRKG, SPRAYABLE THERMOPLASTIC 12 INCH, WHITE
 WB I-96 - 130 FT PAVT MRKG, SPRAYABLE THERMOPLASTIC 6 INCH, WHITE

DESCRIPTION	OR	CHK	APPROV	DATE	BY	CHECKED BY	APPROVED
PLAN							
GRADE							
ESTIMATE							
FINAL							

CITY OF DETROIT
 CITY ENGINEERING DIVISION - O.P.W.
 BUREAUS OF STREETS AND HIGHWAYS
 FOR

South Service Drive Bridge
 MAINTENANCE OF TRAFFIC

SHEET 7.12 OF 12 SHEETS
 CONTRACT NO. PW-7001
 ASSIGNMENT NO.
 DATE 05/24/2019