

DEVELOPED PROFILE ALONG BRIDGE CONSTRUCTION Q.

DATE SOLID 7-1-50
 HOR. SCALE: 1"=10'

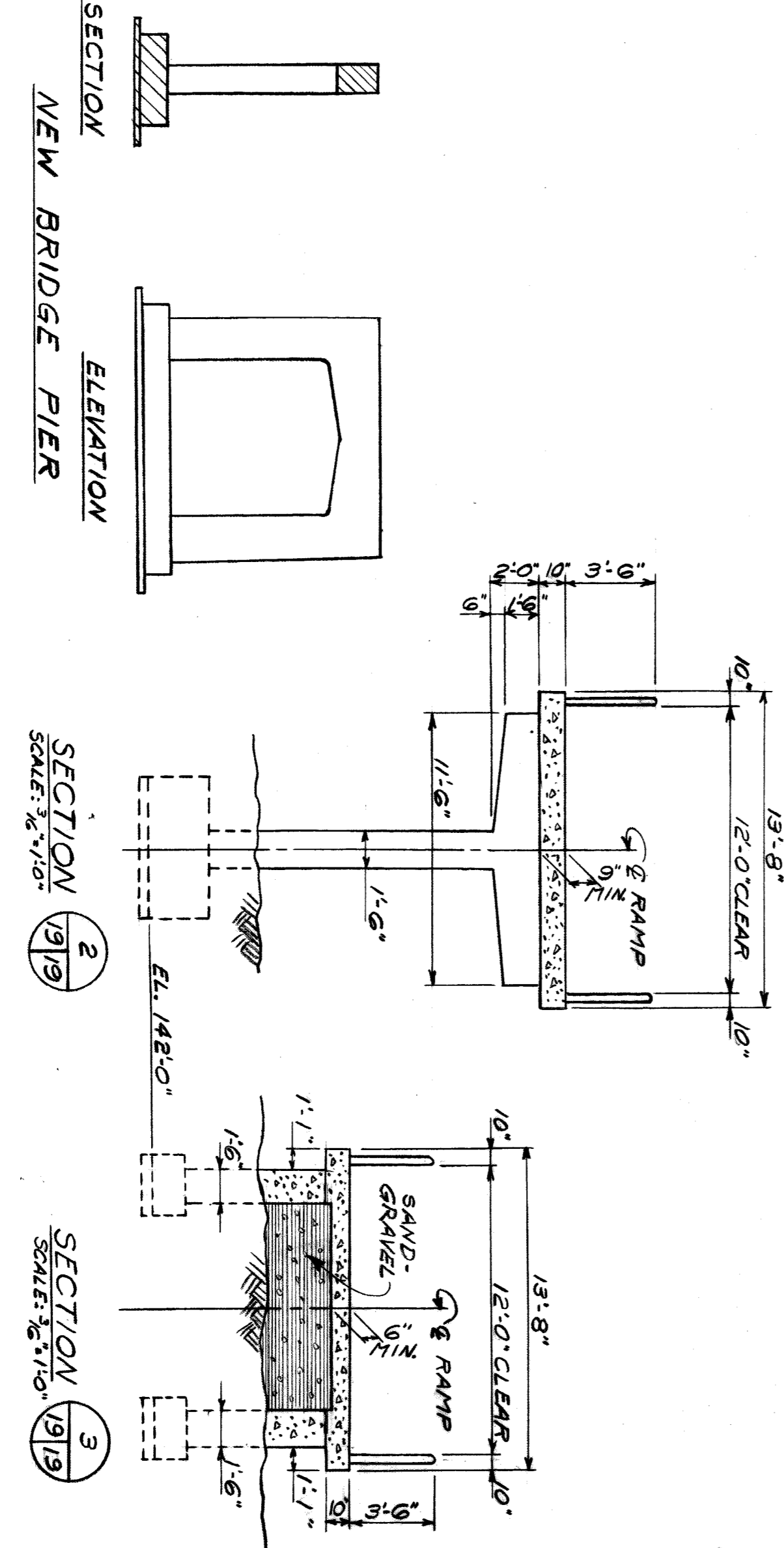
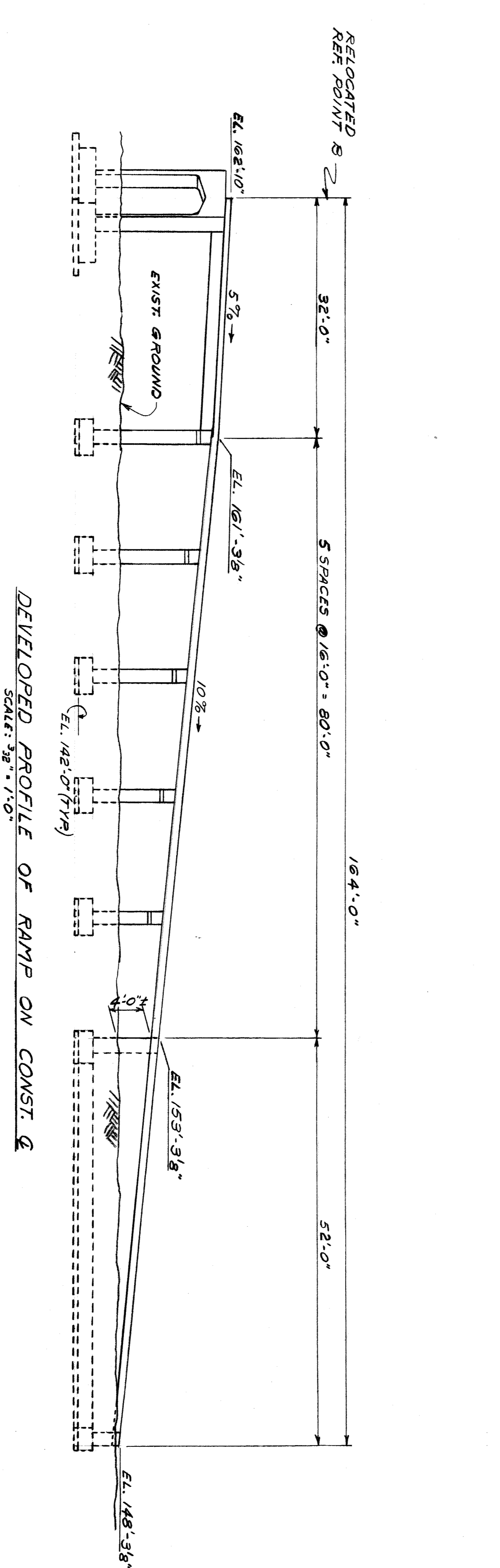
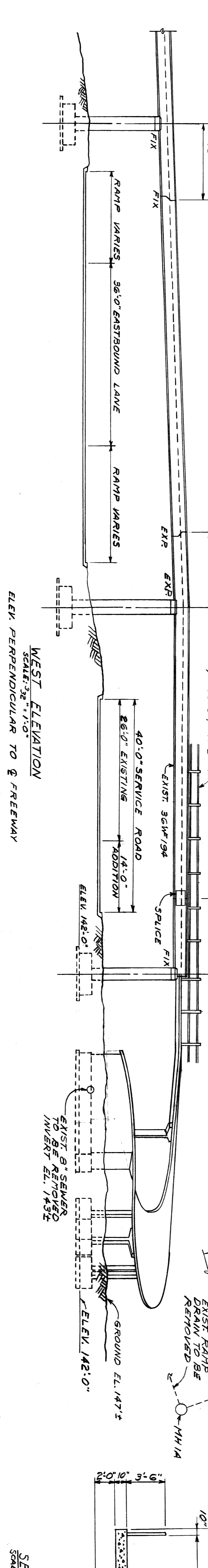
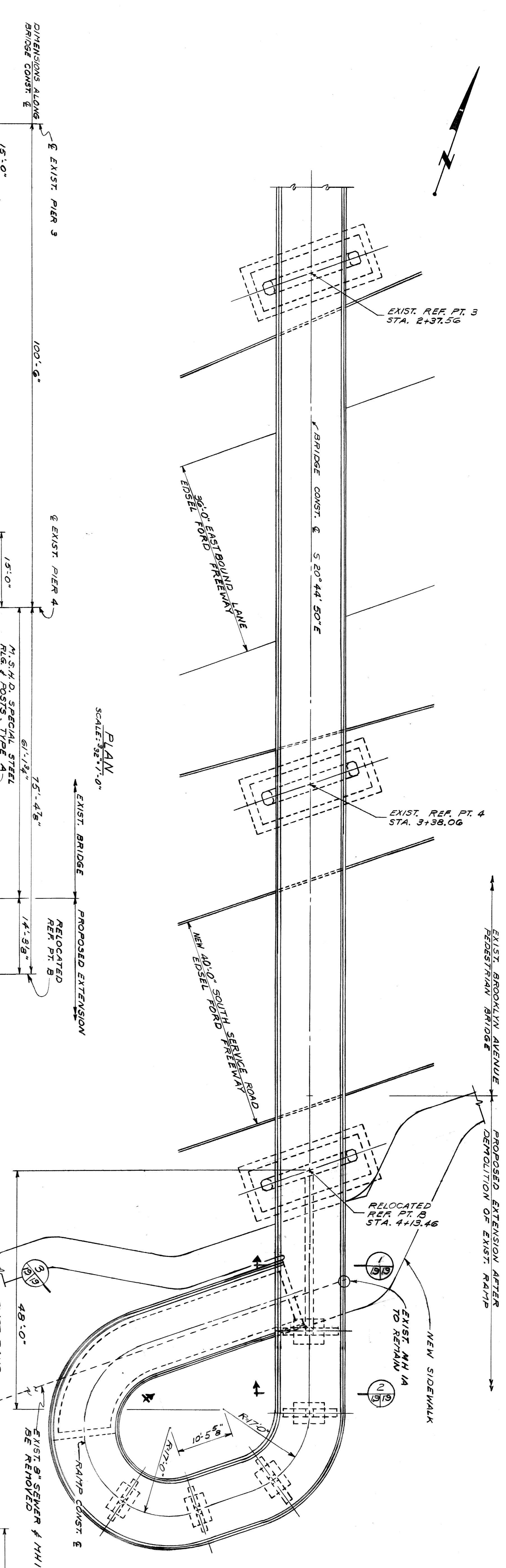
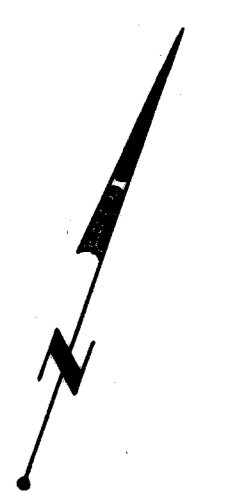
DESIGNED BY H. BERIG	APPROVED <i>H. Berig</i>
DRAWN BY H. BERIG	TRACED BY H. BERIG
CHECKED BY J. GARDNER	CITY ENGINEER <i>Joseph F. Gardner</i>

CITY OF DETROIT
 DEPARTMENT OF PUBLIC WORKS
 CITY ENGINEERS OFFICE
 FOR
 DETROIT HOUSING COMMISSION

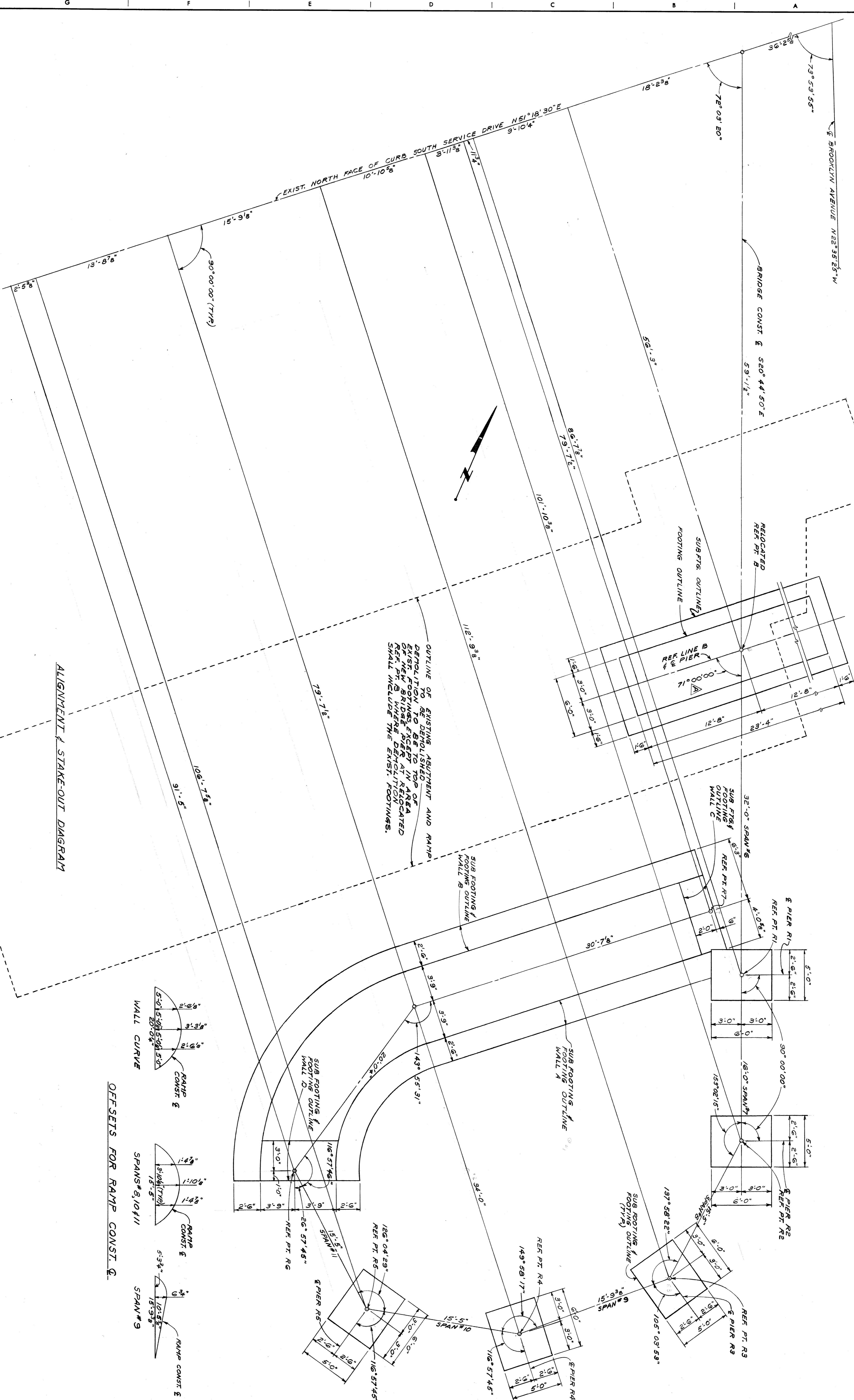
PEDESTRIAN BRIDGE EXTENSION
 BROOKLYN AVENUE AT ESEL FORD FREEWAY
 GENERAL DRAWING

SHEET 18 OF 27 SHEETS
 CONTRACT PW-5711
 DRWG NO. S-1
 DATE MARCH, 1966

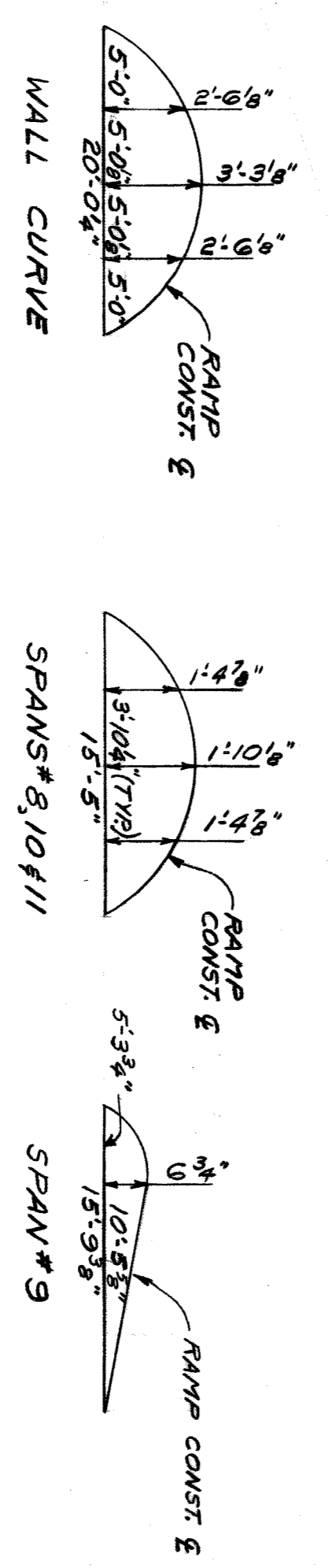
GENERAL NOTES:
 DATUM REFERS TO CITY OF DETROIT DATUM.
 ITEMS OF WORK NOT COVERED BY THESE PLANS ARE INCLUDED WITH THE SERVICE ROAD WIDENING PLANS.
 THE GROUND ADJACENT TO THE STRUCTURE SHALL BE GRADED BY THE CONTRACTOR TO PROVIDE DRAINAGE.
 INSTALLATION OF TRENCH DRAIN AT THE BOTTOM OF THE NEW RAMP IS INCLUDED WITH THE SERVICE ROAD WIDENING PLANS.
 THE DESIGN OF THIS STRUCTURE IS BASED ON THE M.S.H.D. STANDARD SPECIFICATIONS FOR THE DESIGN OF HIGHWAY BRIDGES - 1958 EDITION. SIDEWALK LOADING WITH ALTERNATE LIVE LOAD OF ONE 5-TON TRUCK PLUS 30% IMPACT.



DESIGNED BY H. BIERIG	APPROVED <i>[Signature]</i>	CITY OF DETROIT DEPARTMENT OF PUBLIC WORKS CITY ENGINEERS OFFICE FOR DETROIT HOUSING COMMISSION	SHEET 2 OF 2 SHEETS CONTRACT PW-5711 DRWG NO. 5-2 DATE MARCH, 1966
DRAWN BY H. BIERIG	STR. ENGR. <i>[Signature]</i>		
CHECKED BY J. Covert-T. J. M.	CITY ENGINEER <i>[Signature]</i>		
DESCRIPTION REVISIONS LOCATED BY COORDINATES ON SHEET			



ALIGNMENT & STAKE-OUT DIAGRAM

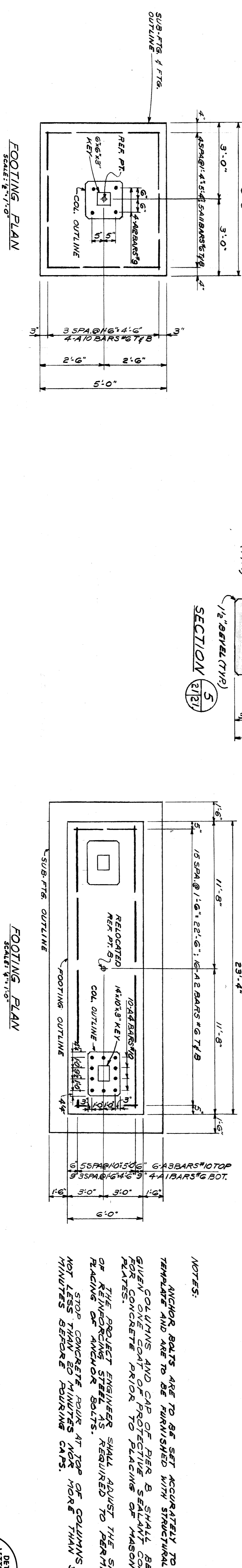
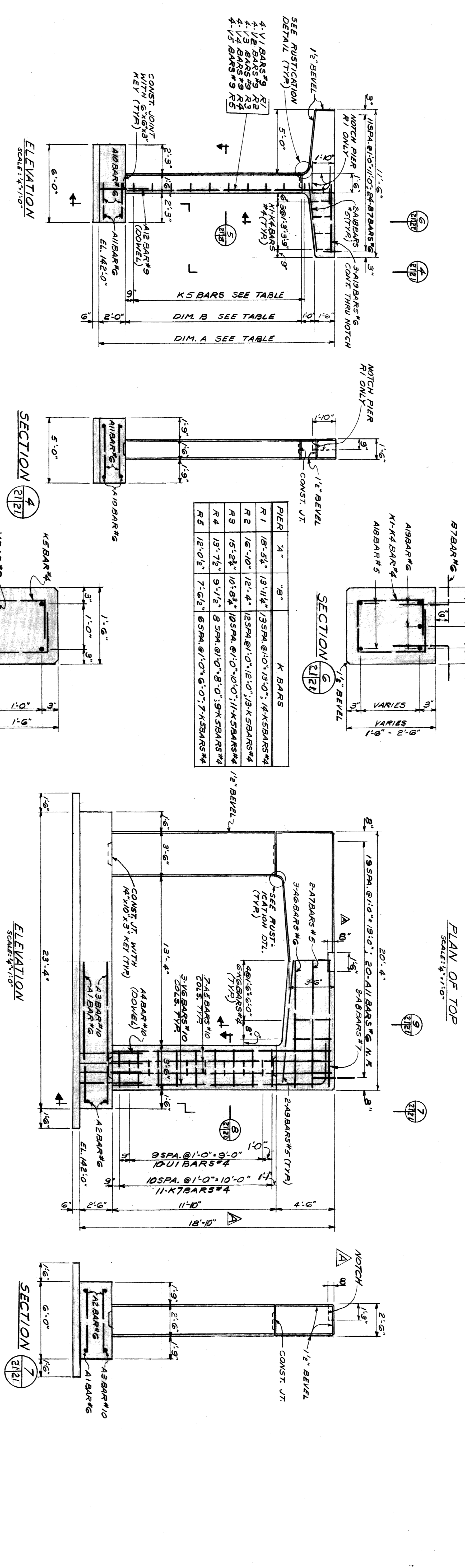
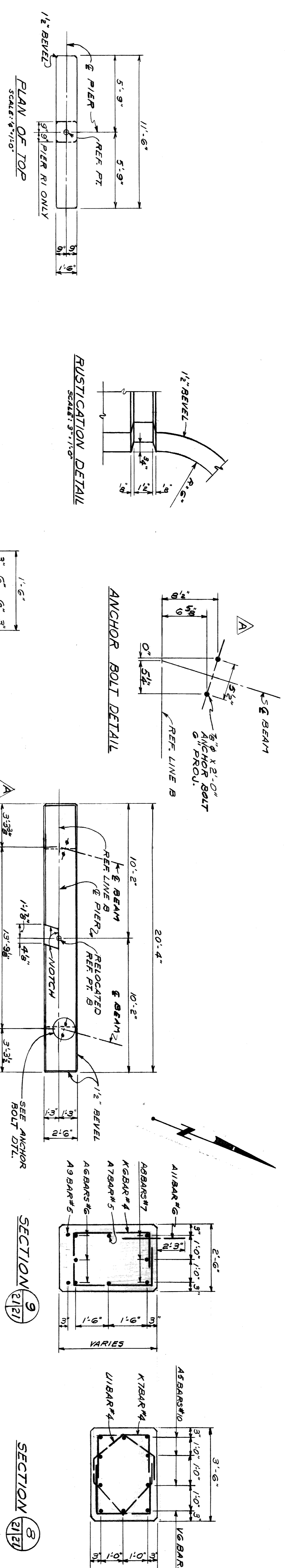


OFFSETS FOR RAMP CONST. Q

DESIGNED BY H. BIERIG	APPROVED <i>[Signature]</i> STRICT. ENGR.
DRAWN BY H. BIERIG	CHECKED BY <i>[Signature]</i> ASST. CITY ENGR.
TRACED BY	CITY ENGINEER
CHECKED BY T.J. McCool	

CITY OF DETROIT
DEPARTMENT OF PUBLIC WORKS
CITY ENGINEERS OFFICE
FOR
DETROIT HOUSING COMMISSION

PEDESTRIAN BRIDGE EXTENSION BROOKLYN AVENUE AT EDSEL FORD FREEWAY	
SHEET 20 OF 27 SHEETS	CONTRACT PW-5711
DATE MARCH, 1966	DRWG NO. S-3
ALIGNMENT AND STAKE-OUT DIAGRAM	

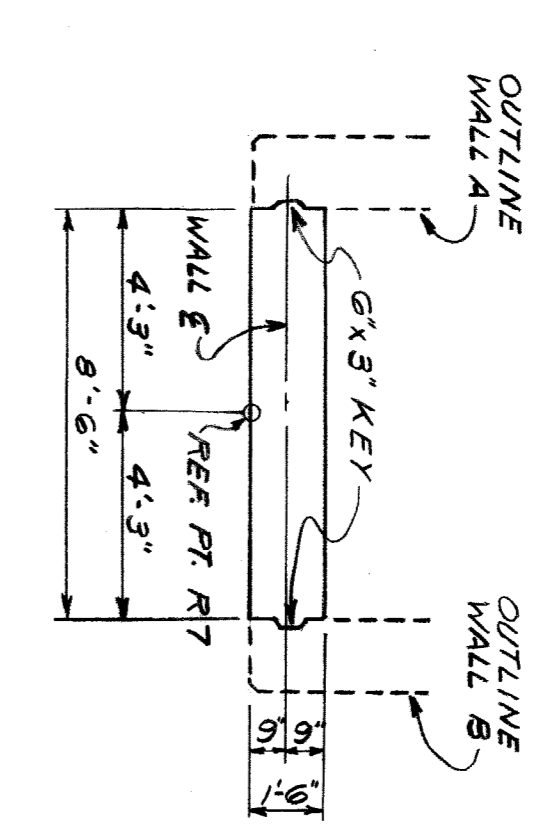
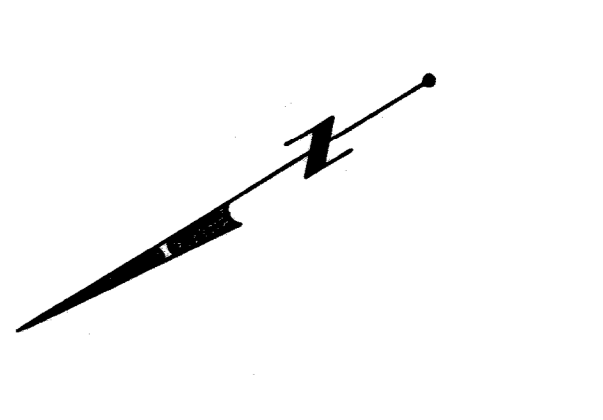


NOTES:
 ANCHOR BOLTS ARE TO BE SET ACCURATELY TO A LEVEL TEMPLATE AND ARE TO BE FURNISHED WITH STRUCTURAL STEEL. COLUMN AND CAP OF PIER B SHALL BE GIVEN PROTECTIVE BESEAL CONCRETE PRIOR TO PLACING OF MASONRY RATES.
 THE PROJECT ENGINEER SHALL ADJUST THE SPACING OF REINFORCING STEEL AS REQUIRED TO MAINTAIN CLEARANCE OF ANCHOR BOLTS.
 STOP CONCRETE POUR AT TOP OF COLUMN FOR NOT LESS THAN 20 MINUTES NOR MORE THAN 30 MINUTES BEFORE POURING CAPS.

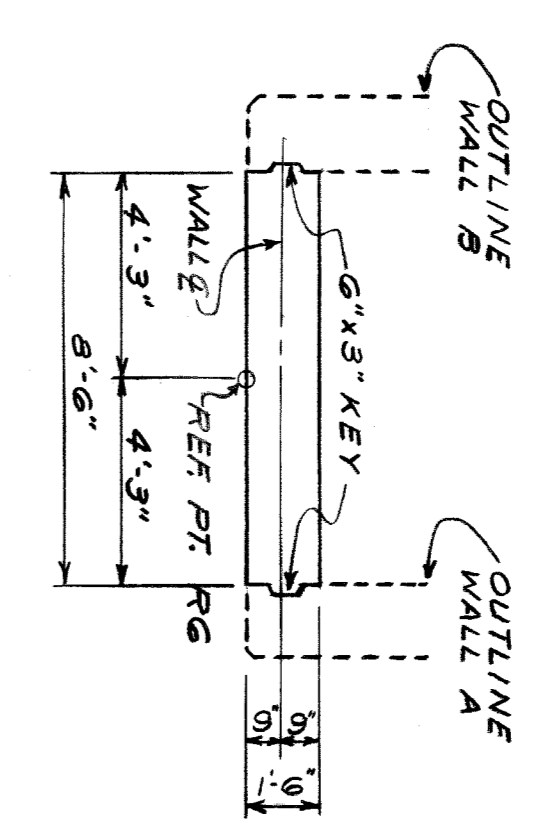
DETAIL LIST
 SHEET NUMBER
 SECTION DETAIL SHEET NUMBER
 SHEET NO. 21 OF 27 SHEETS
 CONTRACT PW-5711
 DATE MARCH, 1966

REVISIONS LOCATED BY COORDINATES ON SHEET	DESCRIPTION	DATE	BY	CHECKED BY	APPROVED
1	REVISE BRIDGE PIER HEIGHT & CAP	1/21/66	H.B. J.C. V.C. B.K.	H. BIERIG	H. BIERIG
2	REVISE BRIDGE PIER HEIGHT & CAP	1/21/66	H.B. J.C. V.C. B.K.	H. BIERIG	H. BIERIG
3	REVISE BRIDGE PIER HEIGHT & CAP	1/21/66	H.B. J.C. V.C. B.K.	H. BIERIG	H. BIERIG
4	REVISE BRIDGE PIER HEIGHT & CAP	1/21/66	H.B. J.C. V.C. B.K.	H. BIERIG	H. BIERIG
5	REVISE BRIDGE PIER HEIGHT & CAP	1/21/66	H.B. J.C. V.C. B.K.	H. BIERIG	H. BIERIG
6	REVISE BRIDGE PIER HEIGHT & CAP	1/21/66	H.B. J.C. V.C. B.K.	H. BIERIG	H. BIERIG
7	REVISE BRIDGE PIER HEIGHT & CAP	1/21/66	H.B. J.C. V.C. B.K.	H. BIERIG	H. BIERIG
8	REVISE BRIDGE PIER HEIGHT & CAP	1/21/66	H.B. J.C. V.C. B.K.	H. BIERIG	H. BIERIG
9	REVISE BRIDGE PIER HEIGHT & CAP	1/21/66	H.B. J.C. V.C. B.K.	H. BIERIG	H. BIERIG
10	REVISE BRIDGE PIER HEIGHT & CAP	1/21/66	H.B. J.C. V.C. B.K.	H. BIERIG	H. BIERIG
11	REVISE BRIDGE PIER HEIGHT & CAP	1/21/66	H.B. J.C. V.C. B.K.	H. BIERIG	H. BIERIG

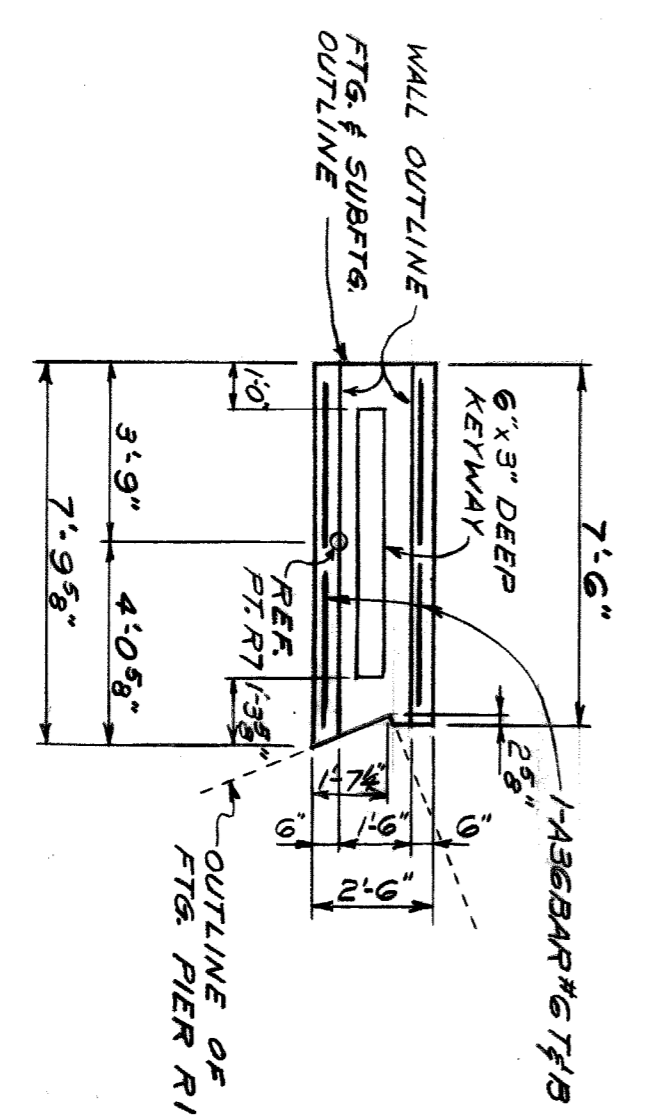
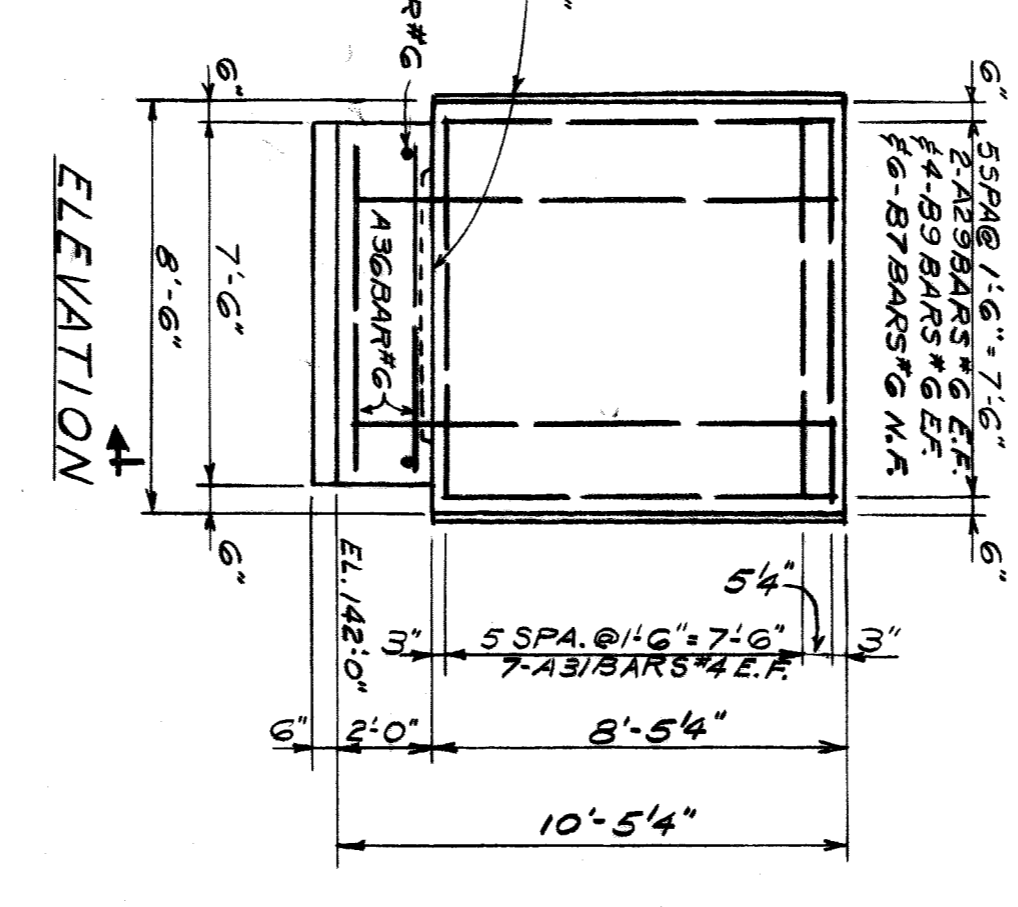
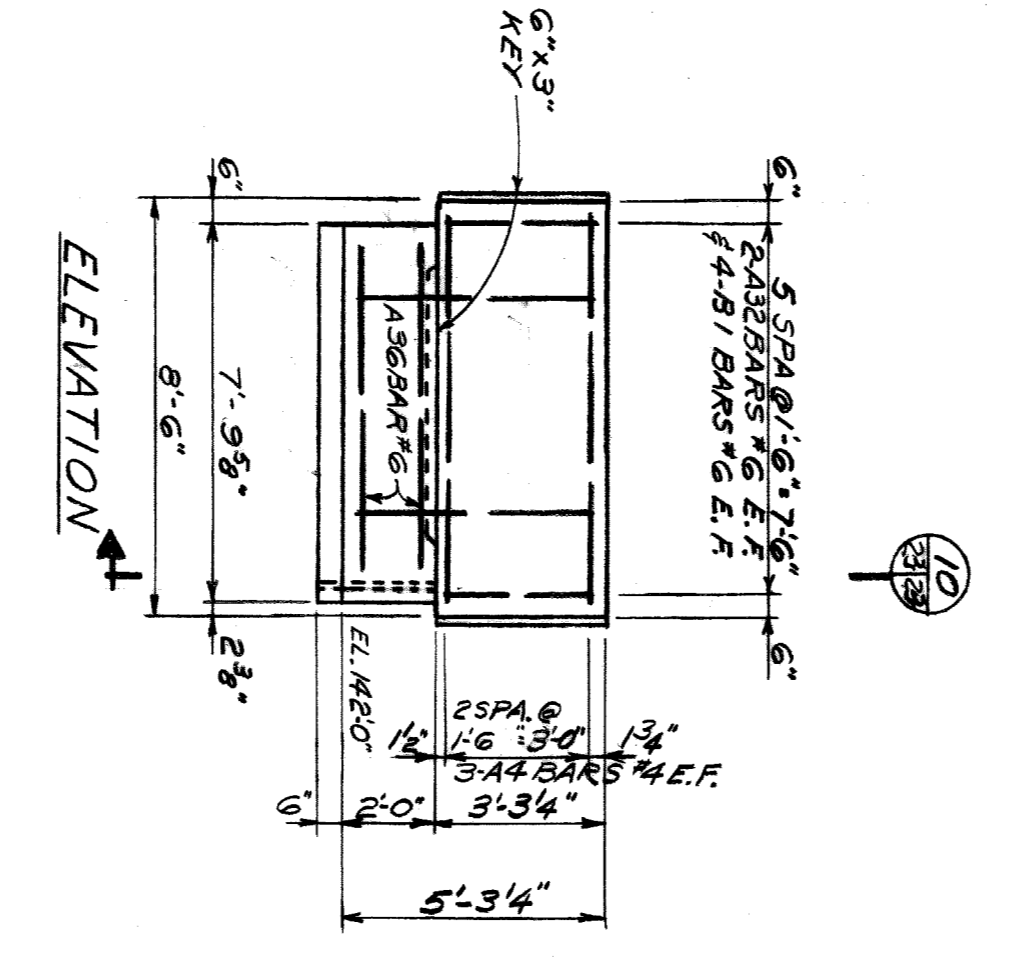
CITY OF DETROIT
 DEPARTMENT OF PUBLIC WORKS
 CITY ENGINEERS OFFICE
 FOR
 NEW BRIDGE PIER & RAMP PIERS



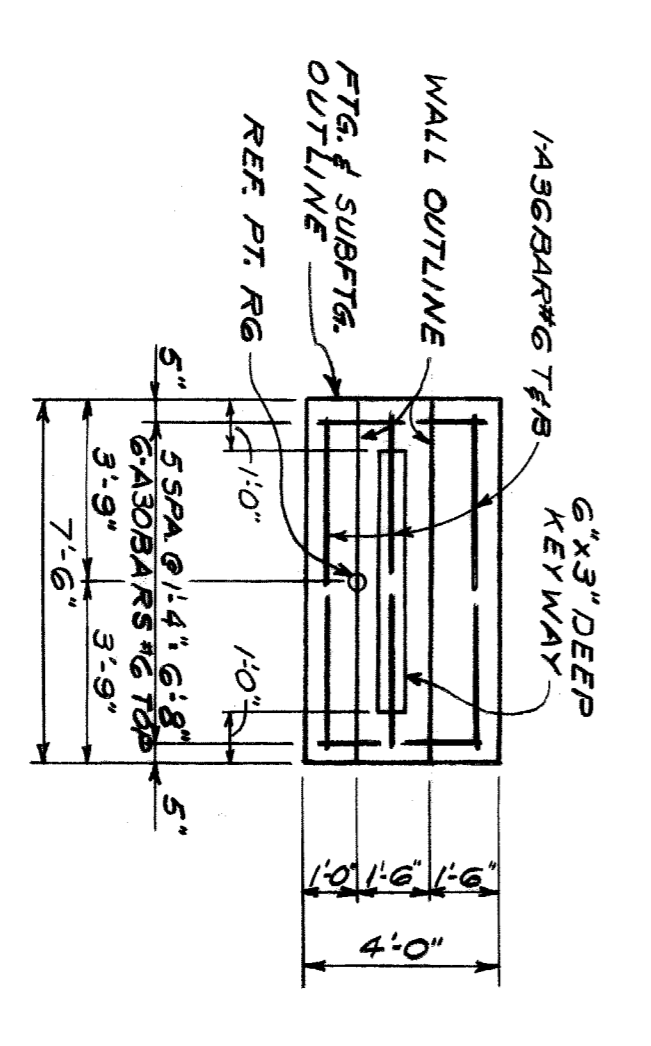
PLAN OF TOP-WALL C



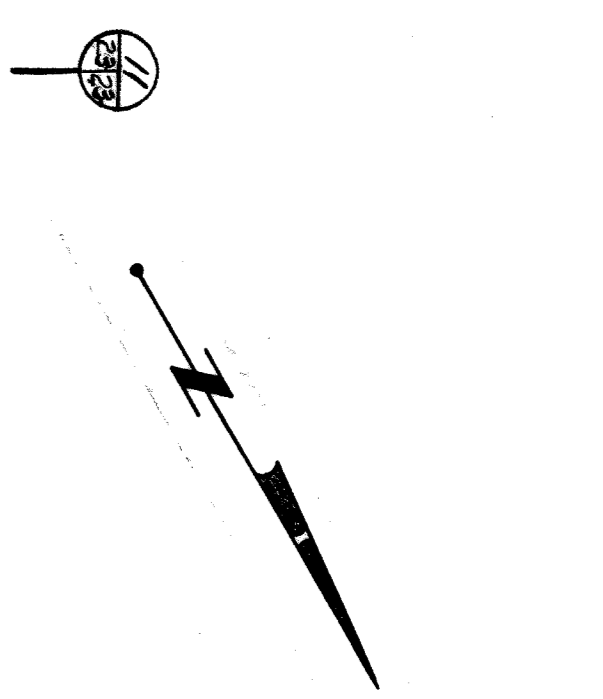
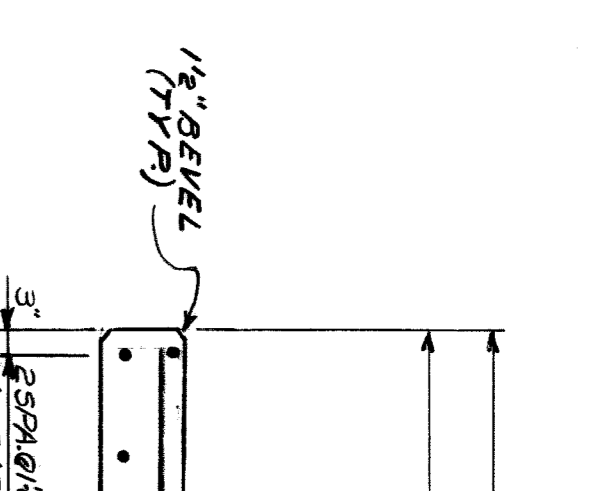
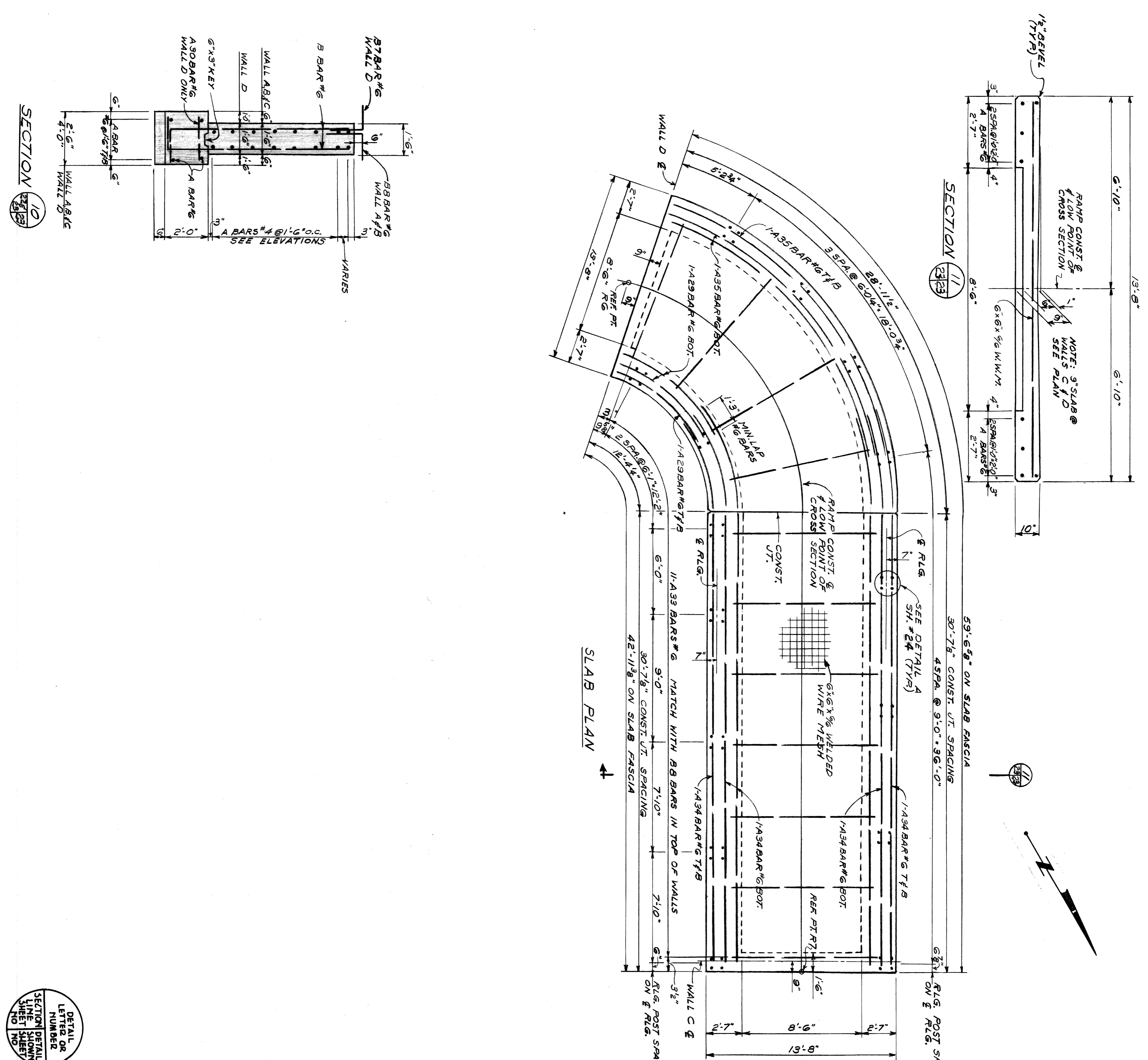
PLAN OF TOP-WALL D



FOOTING PLAN



FOOTING PLAN



SECTION 10

SECTION 11

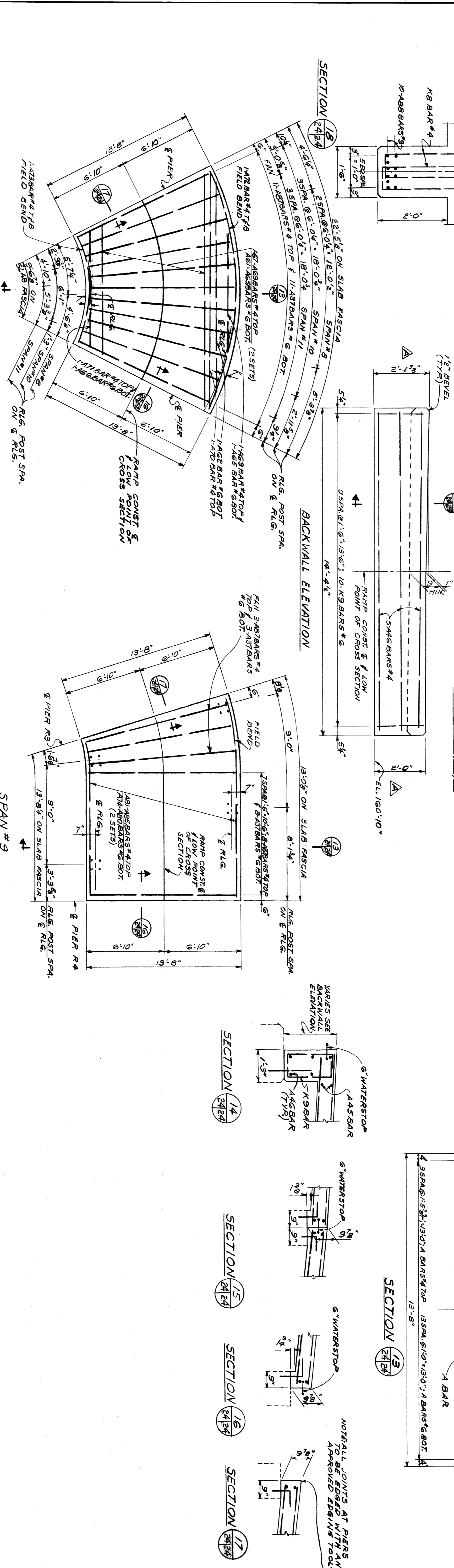
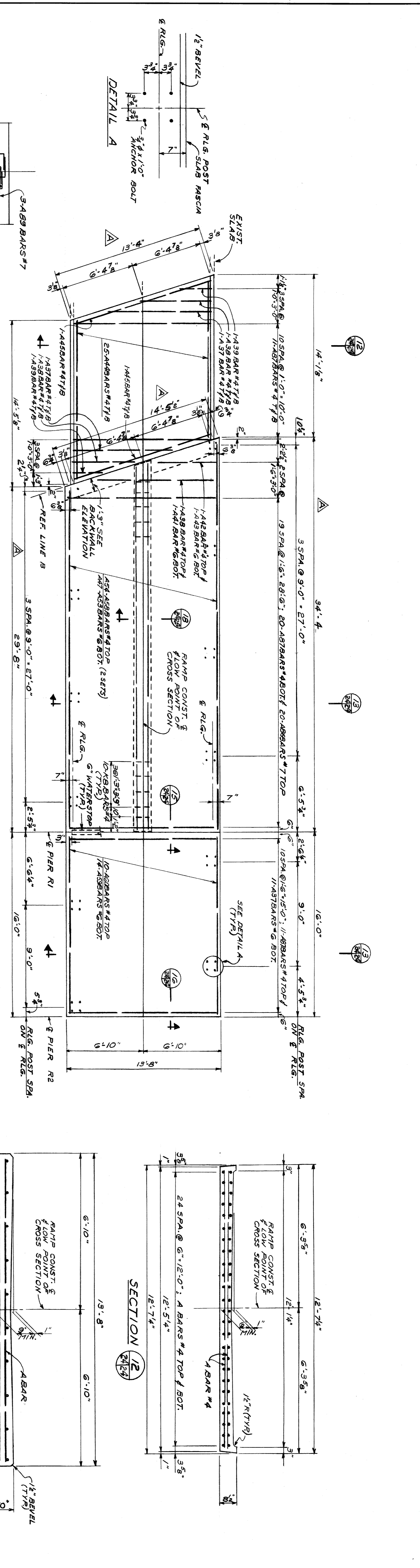
SECTION 12

DESIGNED BY H. BIERIE	APPROVED <i>[Signature]</i>	CITY OF DETROIT DEPARTMENT OF PUBLIC WORKS CITY ENGINEERS OFFICE FOR DETROIT HOUSING COMMISSION	SHEET 23 OF 27 SHEETS CONTRACT PW-5711 DRWG NO. S-6 DATE MARCH, 1966
DRAWN BY H. BIERIE	STREET ENGINEER <i>[Signature]</i>		
CHECKED BY T.J. McCool	ASSIST. CITY ENGINEER <i>[Signature]</i>		
DESCRIPTION	REVISIONS LOCATED BY COORDINATES ON SHEET		

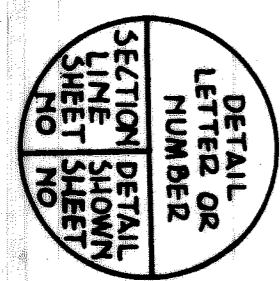
PEDESTRIAN BRIDGE EXTENSION
BROOKLIM AVENUE AT EDEL FORD FREEWAY

RAMP RETAINING WALLS & SLAB

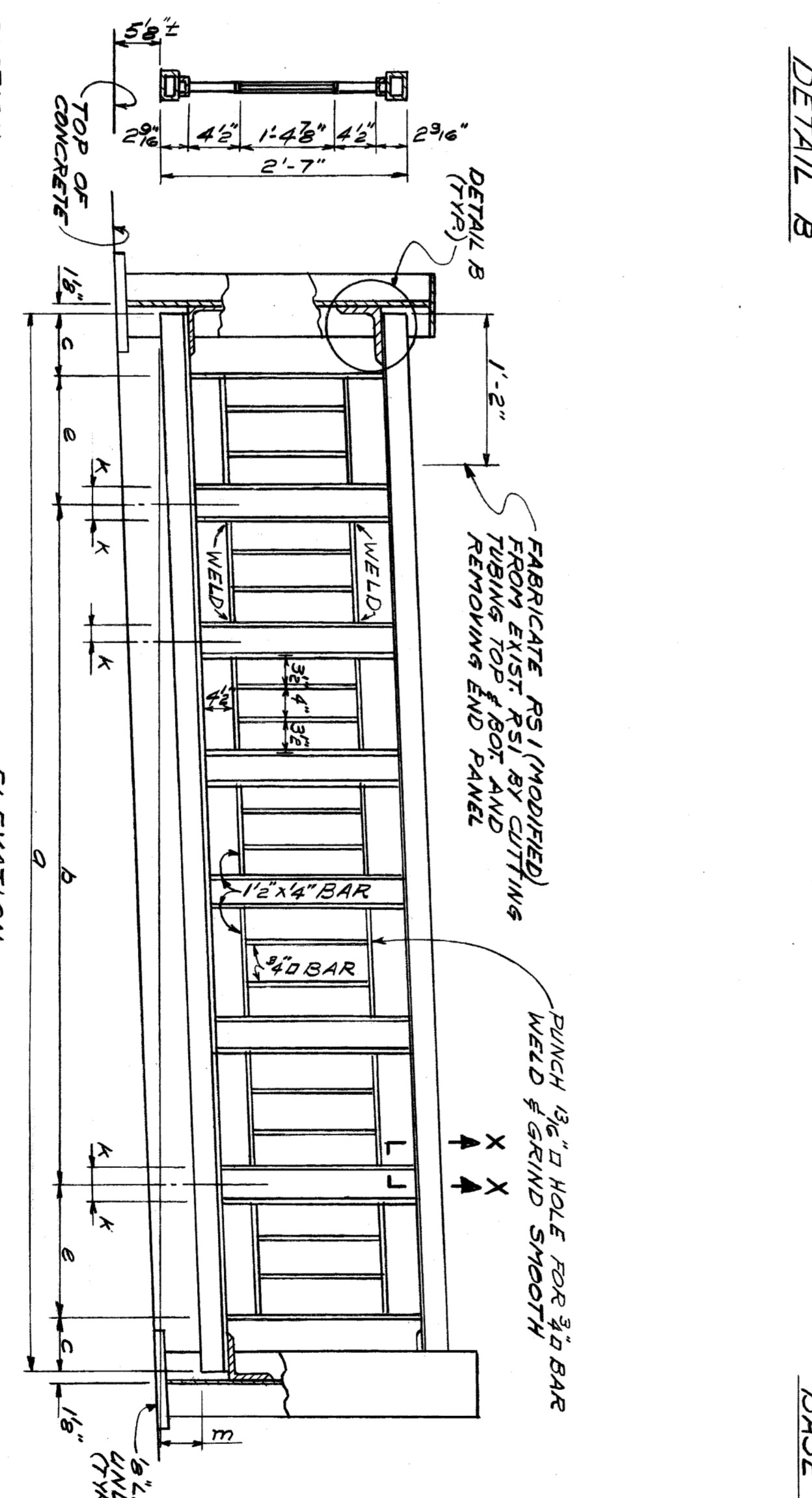
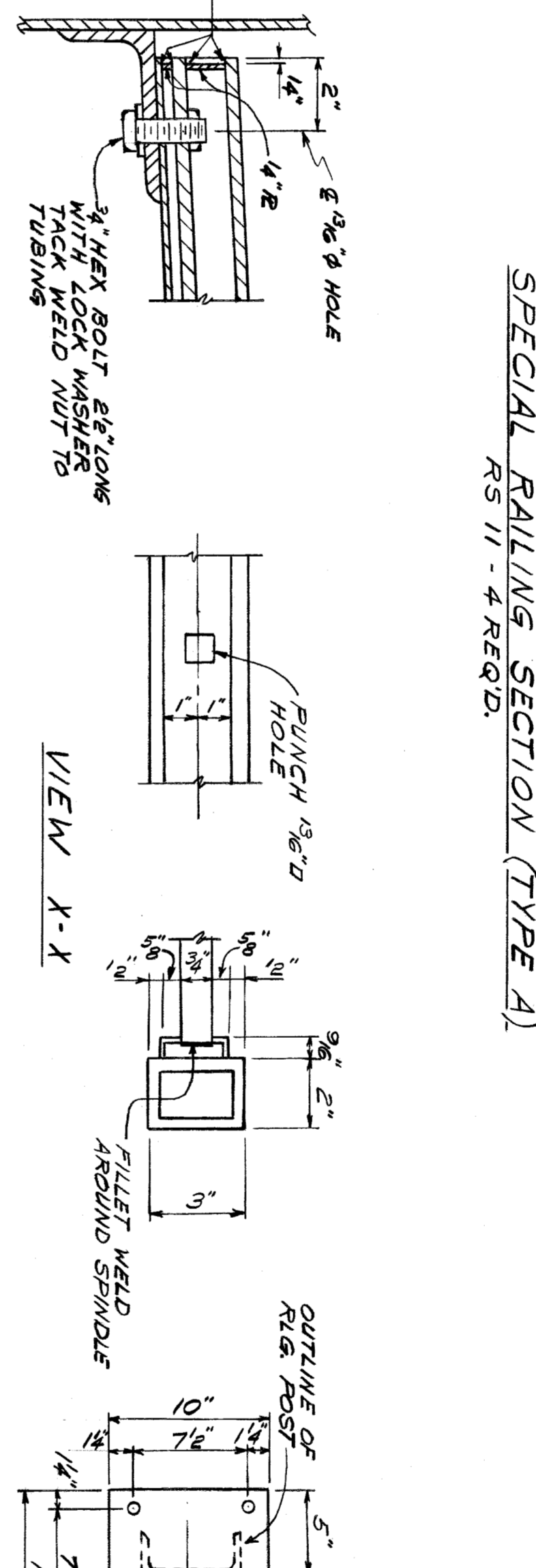
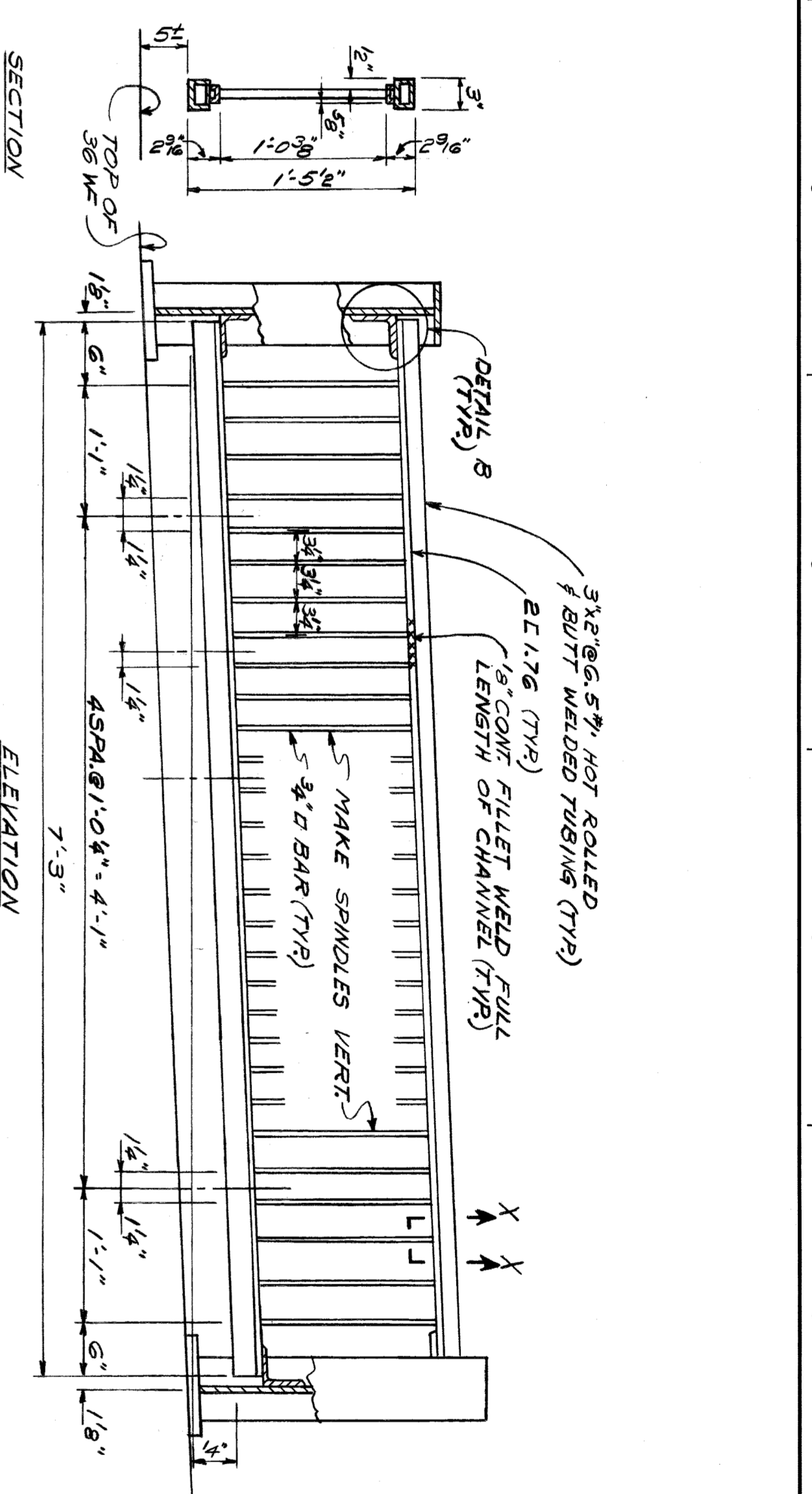
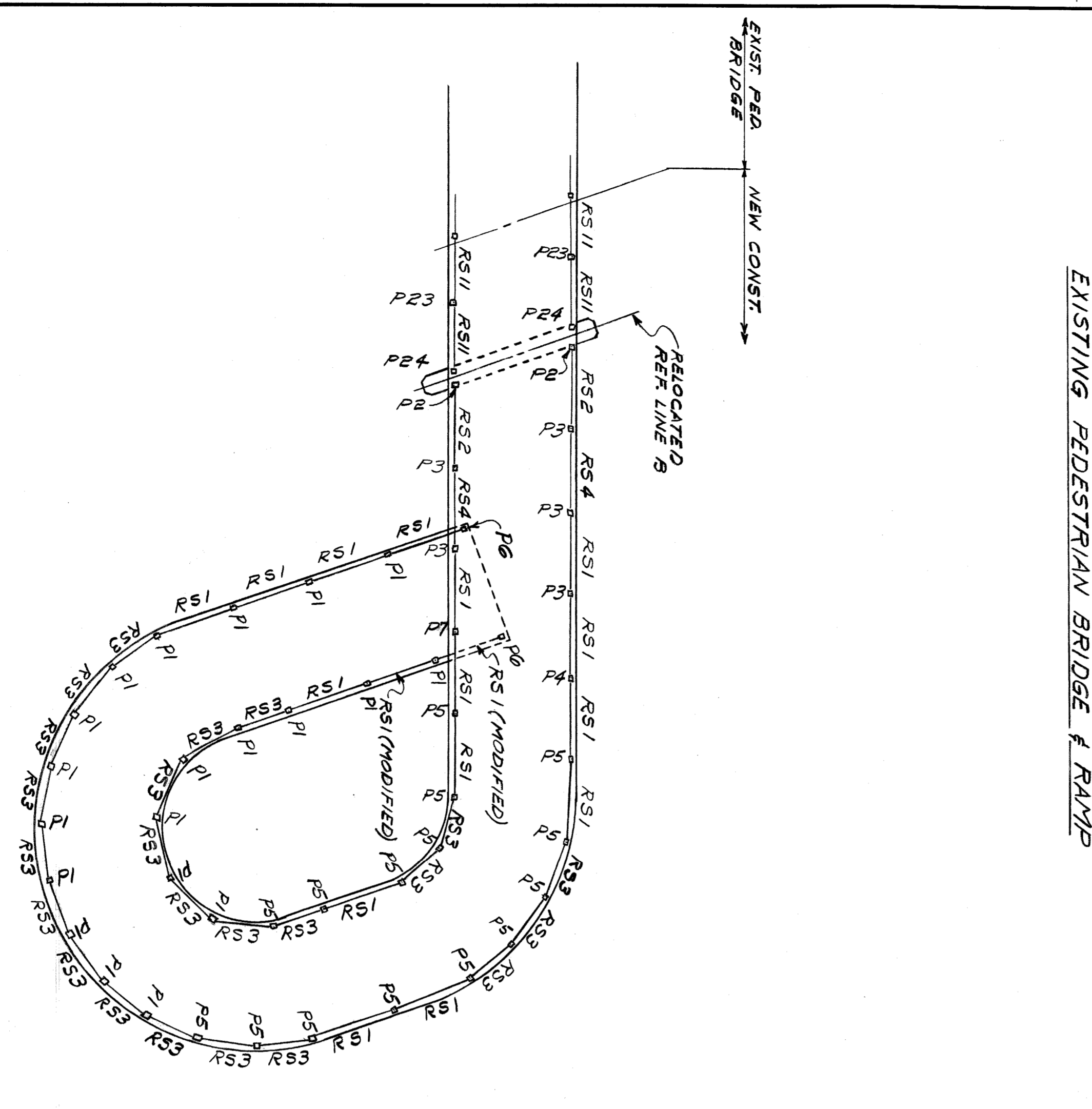
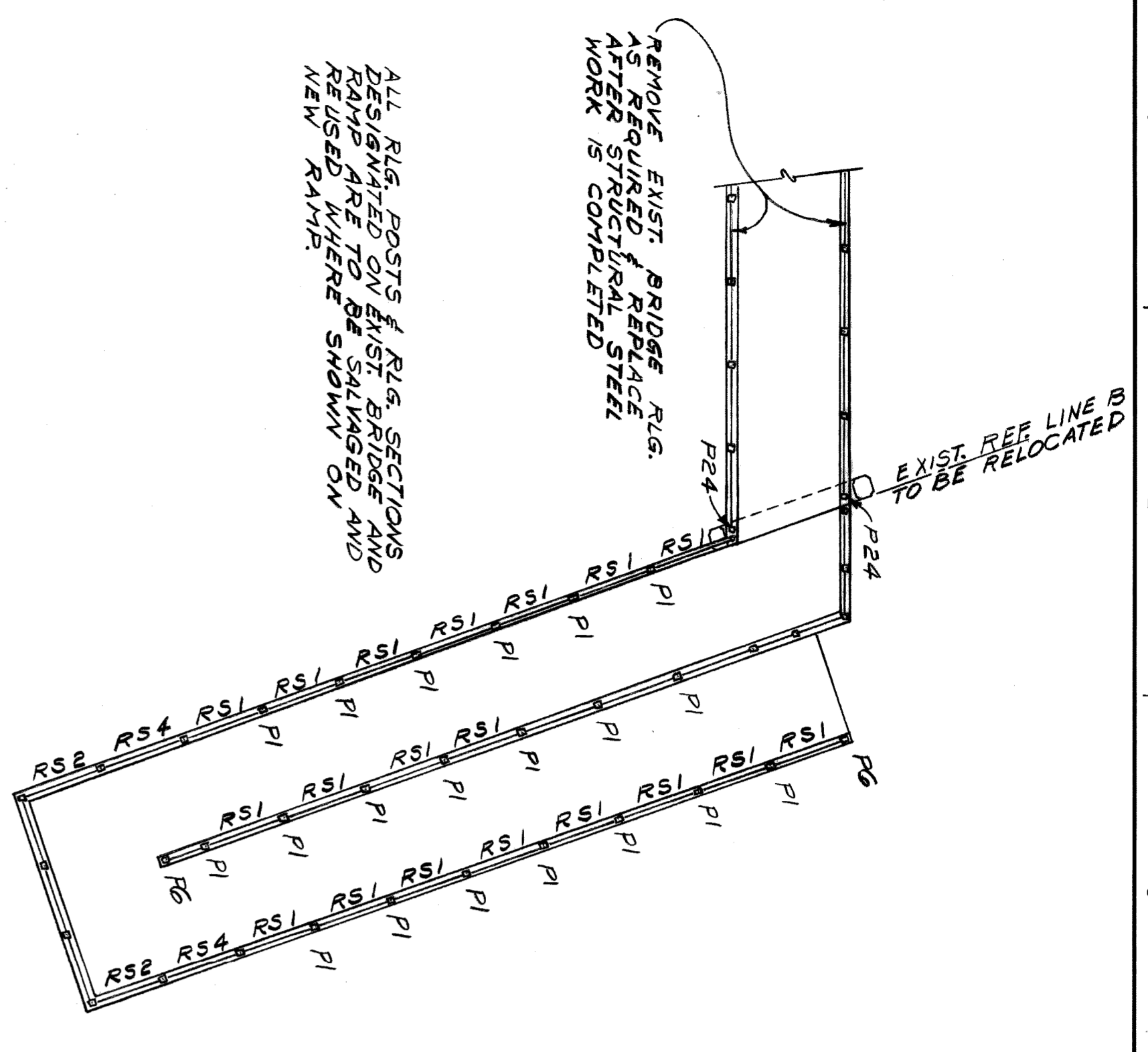
11 1081633



REVISIONS LOCATED BY	COORDINATES ON SHEET	1	2	3	4	5	6	7	8	9	10	11
REVISE SPANS 5, 6 AND 7												
REVISE BACKWALL ELEVATION												
DESCRIPTION												
DESIGNED BY	H. BIERIG											
DRAWN BY	H. BIERIG											
CHECKED BY	T.J. McCall											
APPROVED	<i>[Signature]</i>											
STRUCT. ENGR.												
CITY ENGINEER												
CITY OF DETROIT DEPARTMENT OF PUBLIC WORKS CITY ENGINEERS OFFICE FOR DETROIT HOUSING COMMISSION												
SHEET 24 OF 27 SHEETS CONTRACT PW-5711 DRWG NO. S-7 DATE MARCH, 1966												



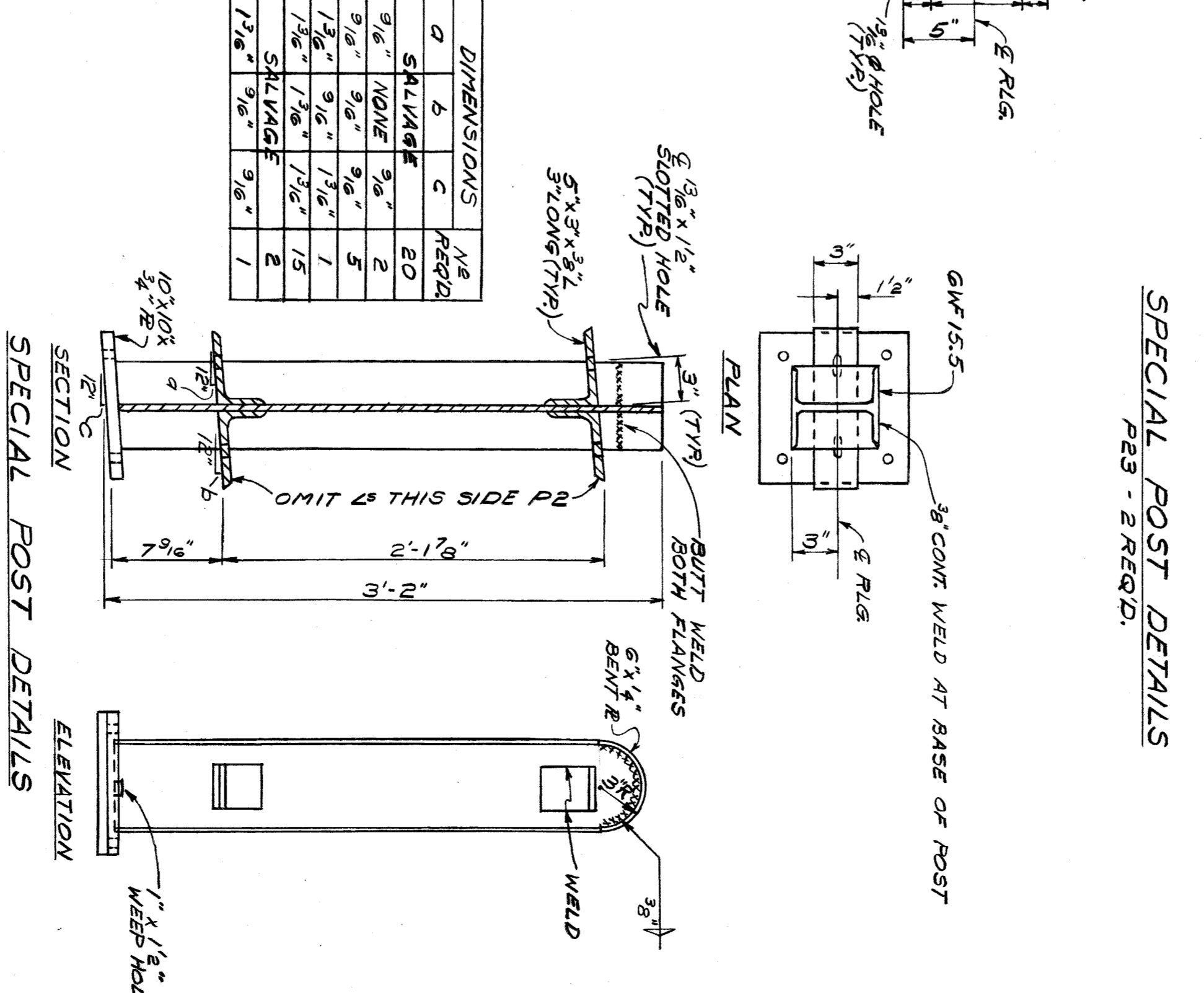
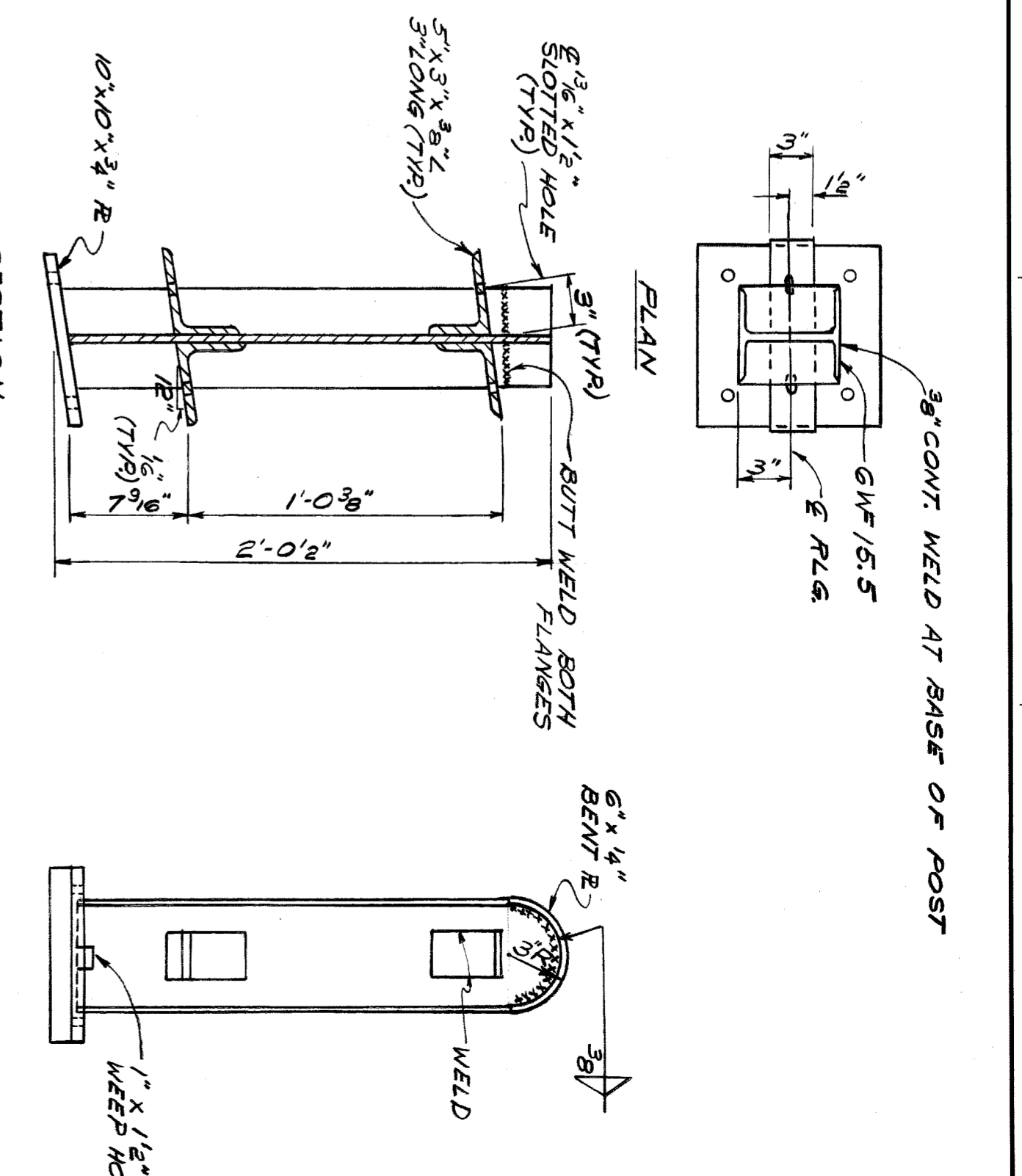
SECTION LETTER OR NUMBER
SECTION NUMBER
SECTION DETAIL
SECTION NUMBER
SECTION NUMBER



SPECIAL RAILING SECTION (TYPE B)
DETAILS NOT SHOWN SIMILAR TO TYPE A

MARK	a	b	c	e	k	m	N.B. REQ'D.
RS1	8'-9 3/4"	SALVAGE FROM EXIST. RAMP					17
RS2	8'-9 3/4"	SALVAGE FROM EXIST. RAMP					2
RS3	5'-9 3/4"	ESPA. @ 1'-2" = 2'-4"					23
RS4	8'-9 3/4"	SALVAGE FROM EXIST. RAMP					2
RS7 (MOD)	7'-7 3/4"	FABRICATE FROM SALVAGED RS1					2

NOTE: THE 1'-2" PANEL SECTIONS OF RS3 MAY BE SALVAGED FROM RAILING SECTIONS OF THE EXIST. PEDEST. BRIDGE (RS1) AND RAMP (RS2) ON THE NEW RAMP (RS4) (AS AVAILABLE).



NOTES
RAILING SECTION MUST BE PLACED IN POSITION BEFORE BOTH POSTS OF CORRESPONDING SECTION ARE PLACED.
ALL EXPOSED WELDS ARE TO BE GRIND SMOOTH.
ALL RAILING SECTIONS TO BE COMPLETELY ELECTRIC WELDED TO PREVENT DISTORTION.
SMOOTH RAILING POSTS TO TRUE VERTICAL POSITION AS REQUIRED.

PEDESTRIAN BRIDGE EXTENSION & NEW RAMP

DESIGNED BY: H. BIERIG
DRAWN BY: H. BIERIG
CHECKED BY: T. J. MCCOOL

APPROVED: [Signature]
CITY ENGINEER

CITY OF DETROIT
DEPARTMENT OF PUBLIC WORKS
CITY ENGINEERS OFFICE
FOR
DETROIT HOUSING COMMISSION

RAILING DETAILS

PEDESTRIAN BRIDGE EXTENSION
BROOKLYN AVENUE AT EDEL FORD FREEWAY

SHEET 26 OF 27 SHEETS
CONTRACT PW-5711
DRWG NO. 5-9
DATE MARCH, 1966

REVISIONS LOCATED BY COORDINATES ON SHEET

