

MECHANICAL ROOM NO 2
SCALE: 1/4" = 1'-0"

MECHANICAL ROOM NO 4
SCALE: 1/4" = 1'-0"

REMOTE RELAYS 1-5 FURNISHED UNDER THIS CONTRACT TO BE INSTALLED BY PLATA II CONTRACTOR. WIRING TO SUIT EQUIPMENT FURNISHED BY CONTRACTOR.

MONITORING RISER DIAGRAM

NO SCALE

NO.	REVISIONS

date 8-11-75
designed M. BROWN
drawn SIMON
checked M. BROWN

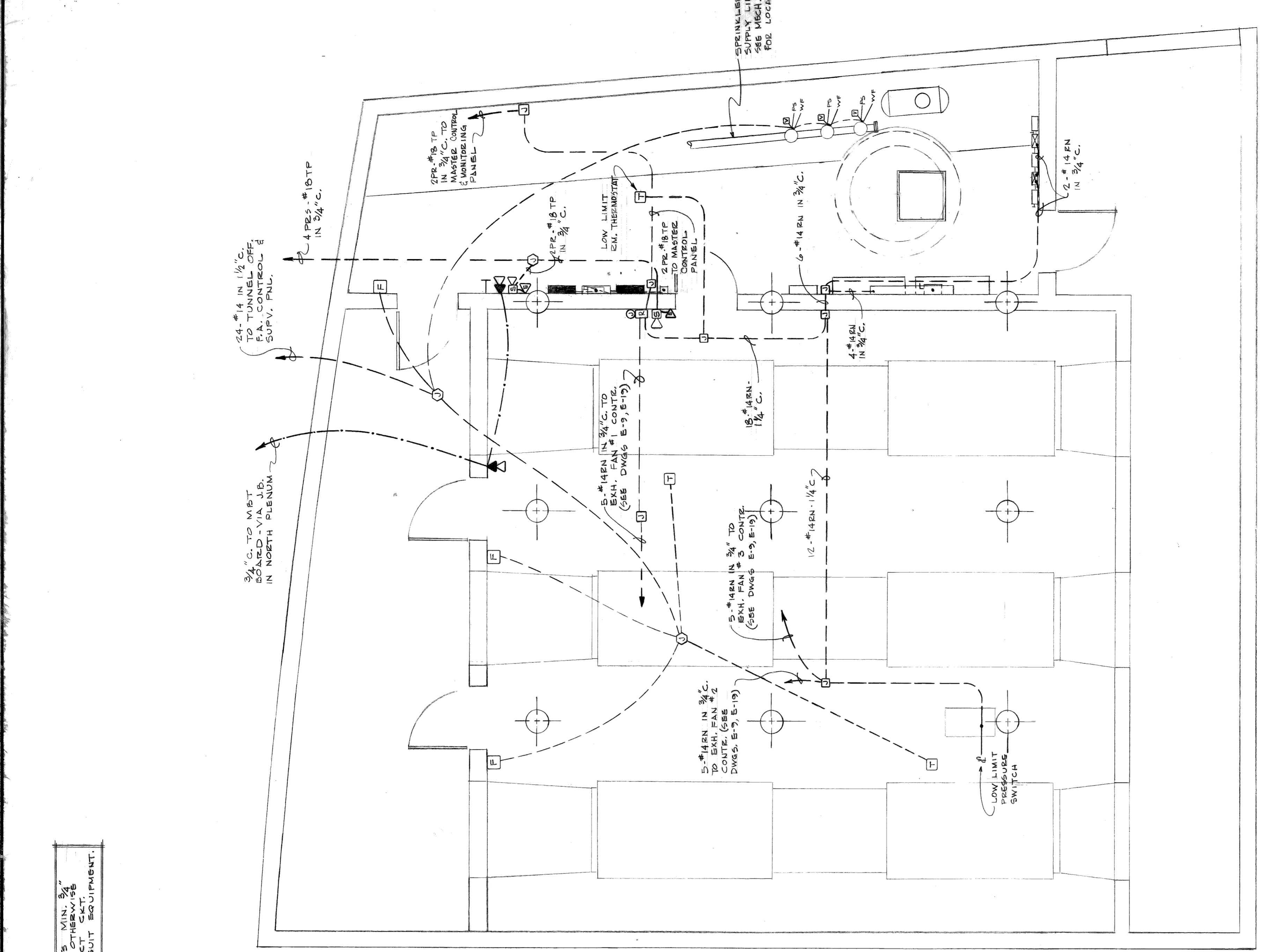
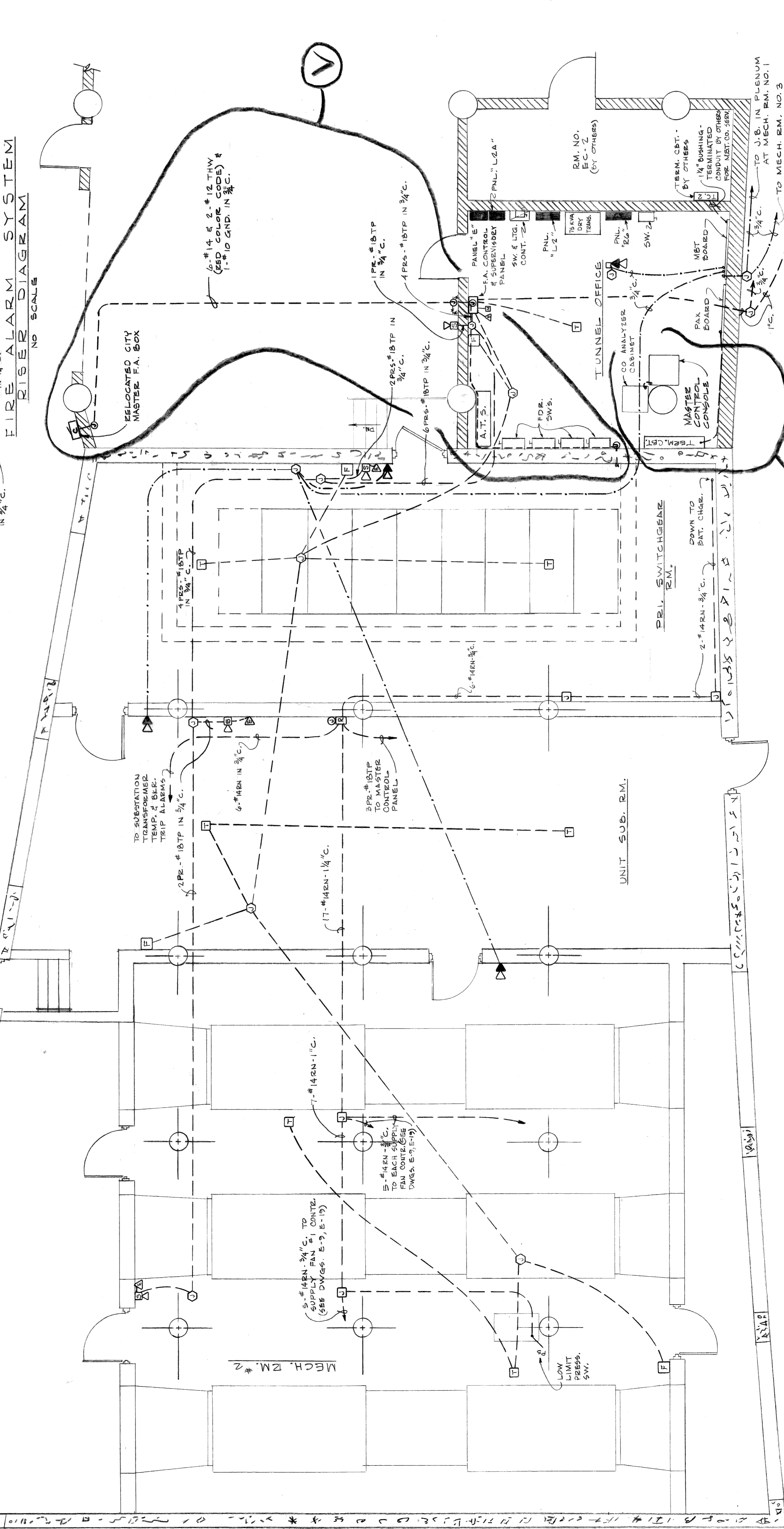
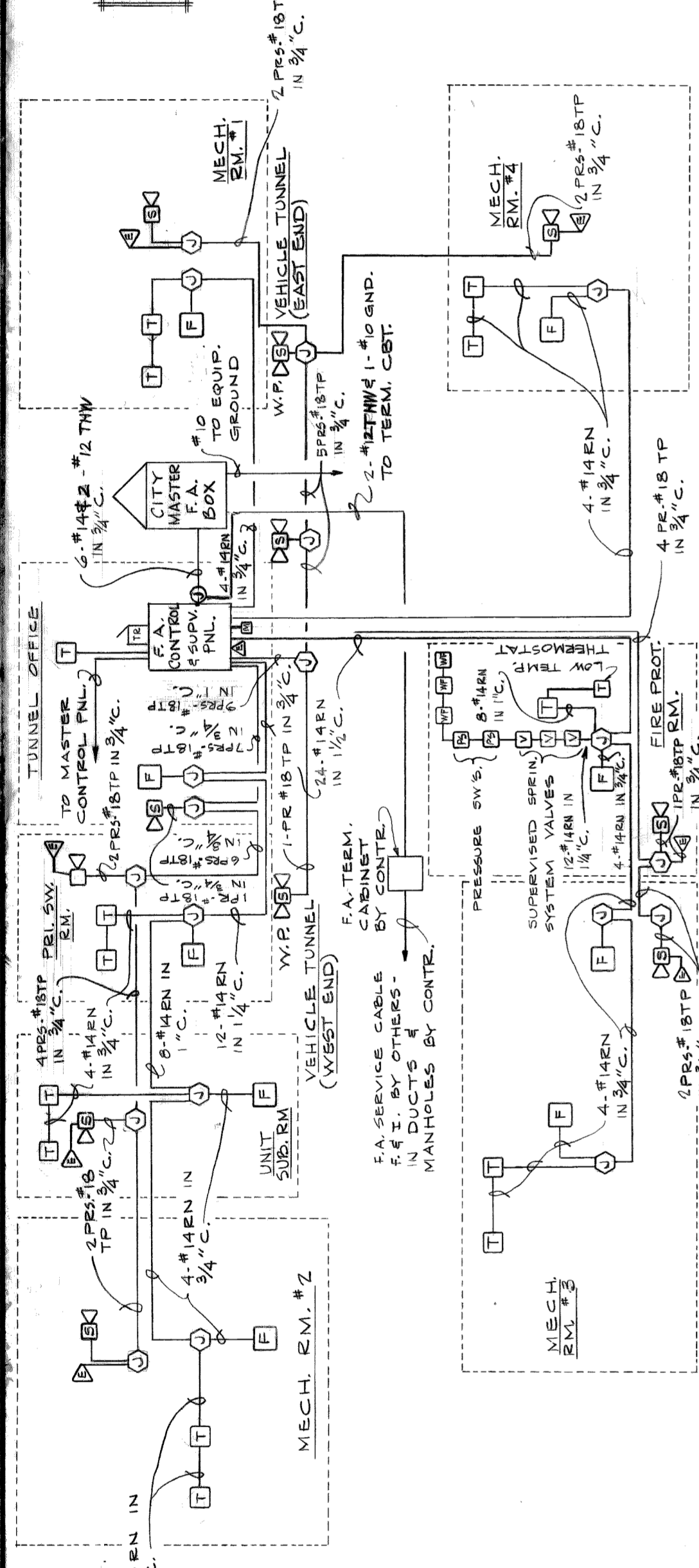
approved
Milton T. Brown
ELECT. ENGR.

CITY OF DETROIT
CITY ENGINEERING DEPARTMENT

ATWATER STREET RELOCATION
ATWATER TUNNEL
MISC. AUXILIARY SYSTEM LAYOUT AND
DETAILS-1 & MONITORING RISER DIAGRAM

contract no.
07105 A

sheet of 2
drawing no.
E-9



ALL CONDUITS MIN. 3/4" NOTED - EXACT SIZES TO SUIT EQUIPMENT.

MECHANICAL ROOM NO. 2
SCALE: 1/4" = 1'-0"

MECHANICAL ROOM NO. 3
SCALE: 1/4" = 1'-0"

NO.	REVISIONS
1	RELOCATED CITY MASTER F.A. BOX SERVICED PER AS-BUILT CONDITIONS

date 8-11-75
designed M. BROWN
drawn SIMON
checked M. BROWN

approved
Milton T. Brown
ELECT. ENGR.

CITY OF DETROIT
CITY ENGINEERING DEPARTMENT

contract no. 07105A

sheet 2 of 3
drawing no. E-10

ATWATER STREET RELOCATION
ATWATER TUNNEL
MISC AUXILIARY SYSTEM LAYOUT AND
DETAILS-2 & FIRE ALARM RISER DIAGRAM

CKT	LOCATION	QTY	ITEM	CONT.	W/O/OUTLET	W/CKT	BEK/SIZE
1	TUNNEL	7	LTG.	PNL.	455 W	3175W	3P 20A
2	GUIDEWAY	6	LTG.	PNL.	285 W	1710W	3P 20A
3	MECH. RM. NO. 1	1	EN/1/2	RELAY	1000W	2P 20A	3P 20A
4	SPARE	1	SPARE			3P 20A	3P 20A
5	SPARE	1	SPARE			3P 20A	3P 20A
6	SPARE	1	SPARE			3P 20A	3P 20A

TOTAL CONNECTED LOAD - 5585W

CKT	LOCATION	QTY	ITEM	CONT.	W/O/OUTLET	W/CKT	BEK/SIZE
1	TUNNEL	3	LTG.	RE.TS.	455 W	1665W	3P 20A
2	TUNNEL	3	LTG.	PNL.	455 W	1665W	3P 20A
3	TUNNEL	3	LTG.	PNL.	455 W	1665W	3P 20A
4	TUNNEL	3	LTG.	PNL.	455 W	1665W	3P 20A
5	TUNNEL	3	LTG.	PNL.	455 W	1665W	3P 20A
6	TUNNEL	3	LTG.	PNL.	455 W	1665W	3P 20A
7	TUNNEL	3	LTG.	PNL.	455 W	1665W	3P 20A
8	TUNNEL	3	LTG.	PNL.	455 W	1665W	3P 20A
9	TUNNEL	3	LTG.	PNL.	455 W	1665W	3P 20A
10	TUNNEL	3	LTG.	PNL.	455 W	1665W	3P 20A
11	TUNNEL	3	LTG.	PNL.	455 W	1665W	3P 20A
12	TUNNEL	3	LTG.	PNL.	455 W	1665W	3P 20A

TOTAL CONNECTED LOAD - 16380W

CKT	LOCATION	QTY	ITEM	CONT.	W/O/OUTLET	W/CKT	BEK/SIZE
1	TUNNEL	6	LTG.	PNL.	455 W	2730W	3P 20A
2	GUIDEWAY	7	LTG.	PNL.	285 W	2000W	3P 20A
3	TUNNEL OFF	1	EN/1/2	RELAY	1000W	2P 20A	3P 20A
4	SPARE	1	SPARE			2P 20A	3P 20A
5	SPARE	1	SPARE			2P 20A	3P 20A
6	UNIT SUB RM.	8	LTG.	S ₁ , S ₂	2/40W R.S.	3P 20A	3P 20A
7	UNIT SUB RM.	8	LTG.	S ₁ , S ₂	2/40W R.S.	3P 20A	3P 20A
8	PRI. SWGR. RM.	8	SPARE	PNL.	1600W	1P 20A	1P 20A
9	SPARE	1	SPARE			1P 20A	1P 20A
10	SPARE	1	SPARE			1P 20A	1P 20A
11/16	SPARE	1	SPARE			1P 20A	1P 20A

TOTAL CONNECTED LOAD - 6640W

CKT	LOCATION	QTY	ITEM	CONT.	W/O/OUTLET	W/CKT	BEK/SIZE
1	TUNNEL	3	LTG.	RE.TS.	455 W	1365W	3P 20A
2	TUNNEL	3	LTG.	PNL.	455 W	1365W	3P 20A
3	TUNNEL	3	LTG.	PNL.	455 W	1365W	3P 20A
4	TUNNEL	3	LTG.	PNL.	455 W	1365W	3P 20A
5	TUNNEL	3	LTG.	PNL.	455 W	1365W	3P 20A
6	TUNNEL	3	LTG.	PNL.	455 W	1365W	3P 20A
7	TUNNEL	3	LTG.	PNL.	455 W	1365W	3P 20A
8	TUNNEL	3	LTG.	PNL.	455 W	1365W	3P 20A
9	TUNNEL	3	LTG.	PNL.	455 W	1365W	3P 20A
10	TUNNEL	3	LTG.	PNL.	455 W	1365W	3P 20A
11	TUNNEL	3	LTG.	PNL.	455 W	1365W	3P 20A
12	TUNNEL	3	LTG.	PNL.	455 W	1365W	3P 20A

TOTAL CONNECTED LOAD - 12740W

CKT	LOCATION	QTY	ITEM	CONT.	W/O/OUTLET	W/CKT	BEK/SIZE
1	TUNNEL	7	LTG.	PNL.	455 W	3175W	3P 20A
2	FIRE PROT. RM.	1	EN/1/2	RELAY	1000W	2P 20A	3P 20A
3	SPARE	1	SPARE			2P 20A	3P 20A
4	SPARE	1	SPARE			2P 20A	3P 20A
5	SPARE	1	SPARE			2P 20A	3P 20A
6	FIRE PROT. RM.	3	LTG.	S	2/40W R.S.	300 W	1P 20A
7/15	SPACES	1	SPACES			9-1P 20A	9-1P 20A

TOTAL CONNECTED LOAD - 4415W

CKT	LOCATION	QTY	ITEM	CONT.	W/O/OUTLET	W/CKT	BEK/SIZE
1	TUNNEL	3	LTG.	RE.TS.	455 W	1365W	3P 20A
2	TUNNEL	3	LTG.	PNL.	455 W	1365W	3P 20A
3	TUNNEL	3	LTG.	PNL.	455 W	1365W	3P 20A
4	TUNNEL	3	LTG.	PNL.	455 W	1365W	3P 20A
5	TUNNEL	3	LTG.	PNL.	455 W	1365W	3P 20A
6	TUNNEL	3	LTG.	PNL.	455 W	1365W	3P 20A
7	TUNNEL	3	LTG.	PNL.	455 W	1365W	3P 20A
8	TUNNEL	3	LTG.	PNL.	455 W	1365W	3P 20A
9	TUNNEL	3	LTG.	PNL.	455 W	1365W	3P 20A
10	TUNNEL	3	LTG.	PNL.	455 W	1365W	3P 20A
11	TUNNEL	3	LTG.	PNL.	455 W	1365W	3P 20A
12	TUNNEL	3	LTG.	PNL.	455 W	1365W	3P 20A

TOTAL CONNECTED LOAD - 17490W

CKT	LOCATION	QTY	ITEM	CONT.	W/O/OUTLET	W/CKT	BEK/SIZE
1	TUNNEL	6	LTG.	PNL.	455 W	2730W	3P 20A
2	MECH. RM. NO. 4	1	EN/1/2	RELAY	1000W	2P 20A	3P 20A
3	SPARE	1	SPARE			2P 20A	3P 20A
4	SPARE	1	SPARE			2P 20A	3P 20A

TOTAL CONNECTED LOAD - 3130W

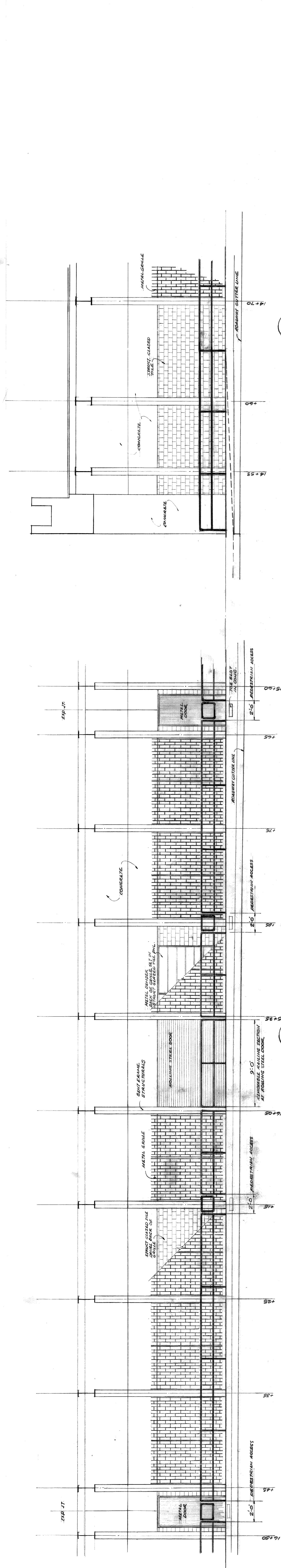
CKT	LOCATION	QTY	ITEM	CONT.	W/O/OUTLET	W/CKT	BEK/SIZE
1	PLENUM	5	LTG.	PNL.	100W	500W	1P 20A
2	PLENUM	5	LTG.	PNL.	100W	500W	1P 20A
3	PLENUM	5	LTG.	PNL.	100W	500W	1P 20A
4	PLENUM	5	LTG.	PNL.	100W	500W	1P 20A
5	PLENUM/MECH. RM. NO. 1	1	S ₁ , S ₂		100W/200W	180W	1P 20A
6	PLENUM	3	LTG.	PNL.	100W	300W	1P 20A
7	MECH. RM. NO. 1	1	EN/1/2	RELAY	1000W	2P 20A	3P 20A
8	SPARE	1	SPARE			2P 20A	3P 20A
9	SPARE	1	SPARE			2P 20A	3P 20A
10	NORTHEAST PLENUM	2	SPARE	PNL.	875W	1750W	1P 20A
11	SPARE	1	SPARE			1P 20A	1P 20A
12	NORTHEAST PLENUM	2	SPARE	PNL.	875W	1750W	1P 20A
13	MECH. RM. NO. 1	1	EN/1/2	RELAY	1000W	2P 20A	3P 20A
14	SPARE	1	SPARE			2P 20A	3P 20A
15	SPARE	1	SPARE			2P 20A	3P 20A
16	SPARE	1	SPARE			2P 20A	3P 20A
17	SPARE	1	SPARE			2P 20A	3P 20A
18	SPARE	1	SPARE			2P 20A	3P 20A
19	TUNNEL	1	EN/1/2	RELAY	1000W	2P 20A	3P 20A
20	MECH. RM. NO. 1	1	EN/1/2	RELAY	1000W	2P 20A	3P 20A
21	MECH. RM. NO. 1	1	EN/1/2	RELAY	1000W	2P 20A	3P 20A
22	FIRE PROT. RM.	1	EN/1/2	RELAY	1000W	2P 20A	3P 20A
23	SPARE	1	SPARE			2P 20A	3P 20A
24	SPARE	1	SPARE			2P 20A	3P 20A

TOTAL CONNECTED LOAD - 35642

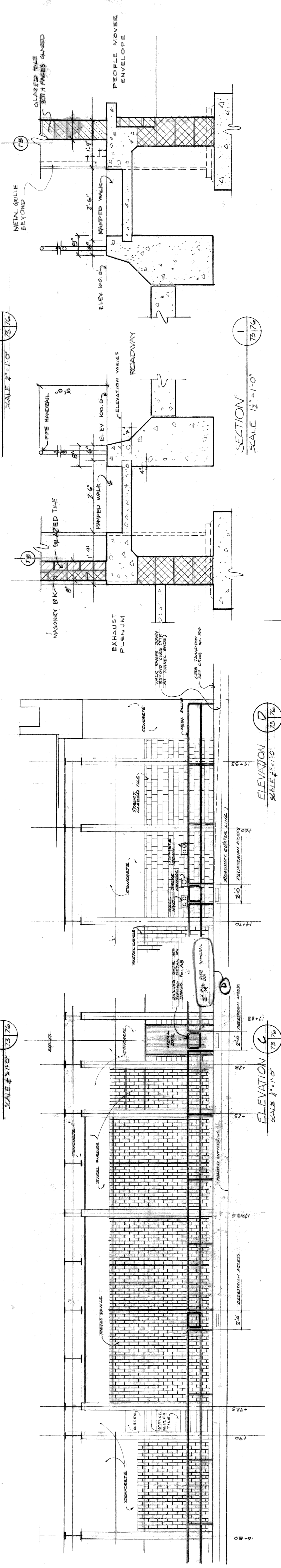
CKT	LOCATION	QTY	ITEM	CONT.	W/O/OUTLET	W/CKT	BEK/SIZE
1	PLENUM	5	LTG.	PNL.	100W	500W	1P 20A
2	PLENUM	5	LTG.	PNL.	100W	500W	1P 20A
3	PLENUM	5	LTG.	PNL.	100W	500W	1P 20A
4	PLENUM	5	LTG.	PNL.	100W	500W	1P 20A
5	PLENUM/MECH. RM. NO. 2	1	S ₁ , S ₂		100W/200W	180W	1P 20A
6	PLENUM	3	LTG.	PNL.	100W	300W	1P 20A
7	MECH. RM. NO. 2	1	EN/1/2	RELAY	1000W	2P 20A	3P 20A
8	TUNNEL OFFICE	1	EN/1/2	RELAY	1000W	2P 20A	3P 20A
9	TUNNEL OFFICE	1	EN/1/2	RELAY	1000W	2P 20A	3P 20A
10	TUNNEL OFFICE	1	EN/1/2	RELAY	1000W	2P 20A	3P 20A
11	TUNNEL OFFICE	1	EN/1/2	RELAY	1000W	2P 20A	3P 20A
12	TUNNEL OFFICE	1	EN/1/2	RELAY	1000W	2P 20A	3P 20A
13	PLENUM/MECH. RM. NO. 2	1	S ₁ , S ₂		100W/200W	180W	1P 20A
14	MECH. RM. NO. 2	1	EN/1/2	RELAY	1000W	2P 20A	3P 20A
15	MECH. RM. NO. 2	1	EN/1/2	RELAY	1000W	2P 20A	3P 20A
16	MECH. RM. NO. 2	1	EN/1/2	RELAY	1000W	2P 20A	3P 20A
17	MECH. RM. NO. 2	1	EN/1/2	RELAY	1000W	2P 20A	3P 20A
18	MECH. RM. NO. 2	1	EN/1/2	RELAY	1000W	2P 20A	3P 20A
19	MECH. RM. NO. 2	1	EN/1/2	RELAY	1000W	2P 20A	3P 20A
20	MECH. RM. NO. 2	1	EN/1/2	RELAY	1000W	2P 20A	3P 20A
21	MECH. RM. NO. 2	1	EN/1/2	RELAY	1000W	2P 20A	3P 20A
22	MECH. RM. NO. 2	1	EN/1/2	RELAY	1000W	2P 20A	3P 20A

TOTAL CONNECTED LOAD - 26290

CKT	LOCATION	QTY	ITEM	CONT.	W/O/OUTLET	W/CKT	BEK/SIZE
1	PLENUM	5	LTG.	PNL.	100W	500W	1P 20A
2	PLENUM	5	LTG.	PNL.	100W	500W	1P 20A
3	PLENUM	5	LTG.	PNL.	100W	500W	1P 20A
4	PLENUM	5	LTG.	PNL.	100W	500W	1P 20A
5	PLENUM/MECH. RM. NO. 3	1	S ₁ , S ₂		100W/200W	180W	1P 20A
6	PLENUM	3	LTG.	PNL.	100W	300W	1P 20A
7	MECH. RM. NO. 3	1	EN/1/2	RELAY	1000W	2P 20A	3P 20A
8	MECH. RM. NO. 3	1	EN/1/2	RELAY	1000W	2P 20A	3P 20A
9	MECH. RM. NO. 3	1	EN/1/2	RELAY	1000W	2P 20A	3P 20A
10	MECH. RM. NO. 3	1	EN/1/2	RELAY	1000W	2P 20A	3P 20A
11	MECH. RM. NO. 3	1	EN/1/2	RELAY	1000W	2P 20A	3P 20A
12	MECH. RM. NO. 3	1	EN/1/2	RELAY	1000W	2P 20A	3P 20A
13	MECH. RM. NO. 3	1	EN/1/2	RELAY	1000W	2P 20A	3P 20A
14	MECH. RM. NO. 3	1	EN/1/2	RELAY	1000W	2P 20A	3P 20A
15	MECH. RM. NO. 3	1	EN/1/2	RELAY	1000W	2P 20A	3P 20A
16	MECH. RM. NO. 3	1	EN/1/2	RELAY	1000W	2P 20A	3P 20A
17	MECH. RM. NO. 3	1	EN/1/2	RELAY	1000W	2P 20A	3P 20A
18	MECH. RM. NO. 3	1	EN/1/2	RELAY	1000W	2P 20A	3P 20A
19	MECH. RM. NO. 3	1	EN/1/2	RELAY	1000W	2P 20A	3P 20A
20	MECH. RM. NO. 3	1	EN/1/2	RELAY	1000W	2P 20A	3P 20A
21	MECH. RM. NO. 3	1	EN/1/2	RELAY	1000W	2P 20A	3P 20A
22							



ELEVATION A
SCALE 1/2" = 1'-0"
73 7/8

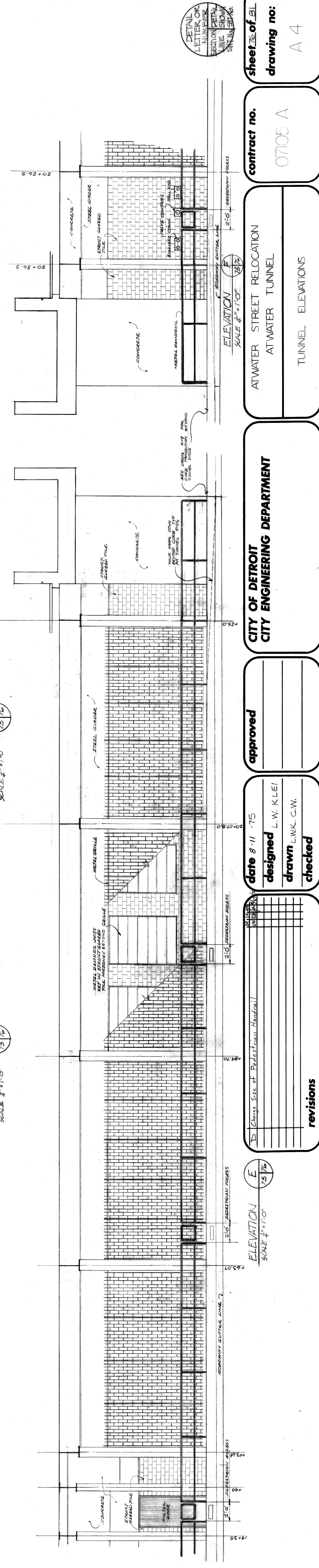


ELEVATION B
SCALE 1/2" = 1'-0"
73 7/8

SECTION
SCALE 1/2" = 1'-0"
73 7/8

ELEVATION D
SCALE 1/2" = 1'-0"
73 7/8

ELEVATION C
SCALE 1/2" = 1'-0"
73 7/8



ELEVATION F
SCALE 1/2" = 1'-0"
73 7/8

ATWATER STREET RELOCATION
AT WATER TUNNEL
TUNNEL ELEVATIONS

DATE 8-11-75
DESIGNED L.W. KLEI
DRAWN L.W.K. C.W.
CHECKED

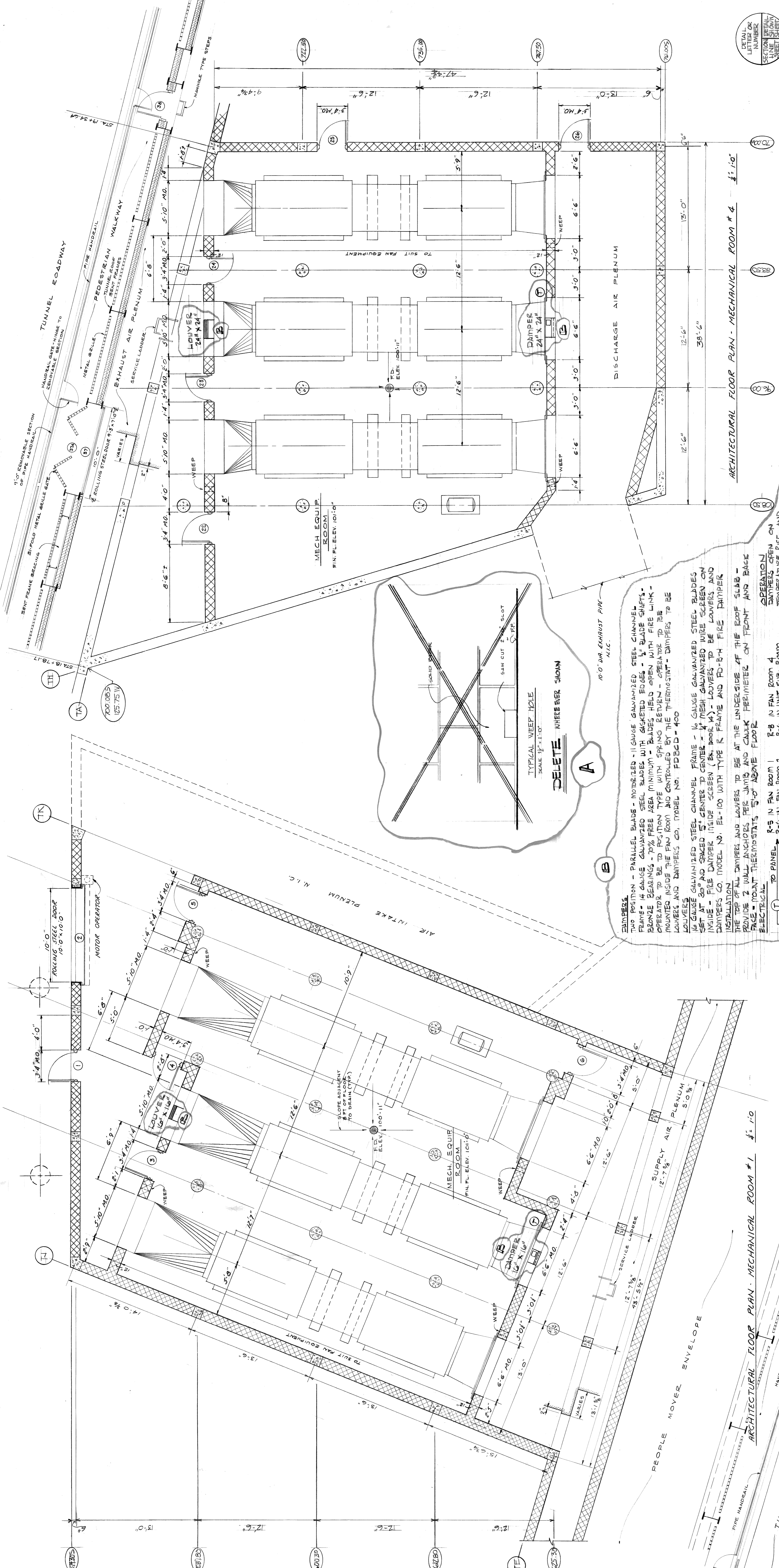
APPROVED

CITY OF DETROIT
CITY ENGINEERING DEPARTMENT

CONTRACT NO. 07105 A
DRAWING NO. A 4

REVISIONS

DETAIL LETTER OR NUMBER SECTION DETAIL LINE SHOW



DAMPERS
 TWO POSITION - PARALLEL BLADE - MOTORIZED - 11 GAUGE GALVANIZED STEEL CHANNEL FRAME - 1/4 GAUGE GALVANIZED STEEL BLADES WITH GASKETED EDGES - 1" BLADE SHIFTS - BRONZE BEARINGS - 70% FREE AREA MINIMUM - BLADES HELD OPEN WITH FIRE LINK - OPERATOR TO BE TO POSITION TYPE WITH SPRING RETURN - OPERATOR TO BE MOUNTED INSIDE THE FAN ROOM AND CONTROLLED BY THE THERMOSTAT - DAMPERS TO BE LOWERS AND DAMPERS CO. MODEL NO. FD800 - 400

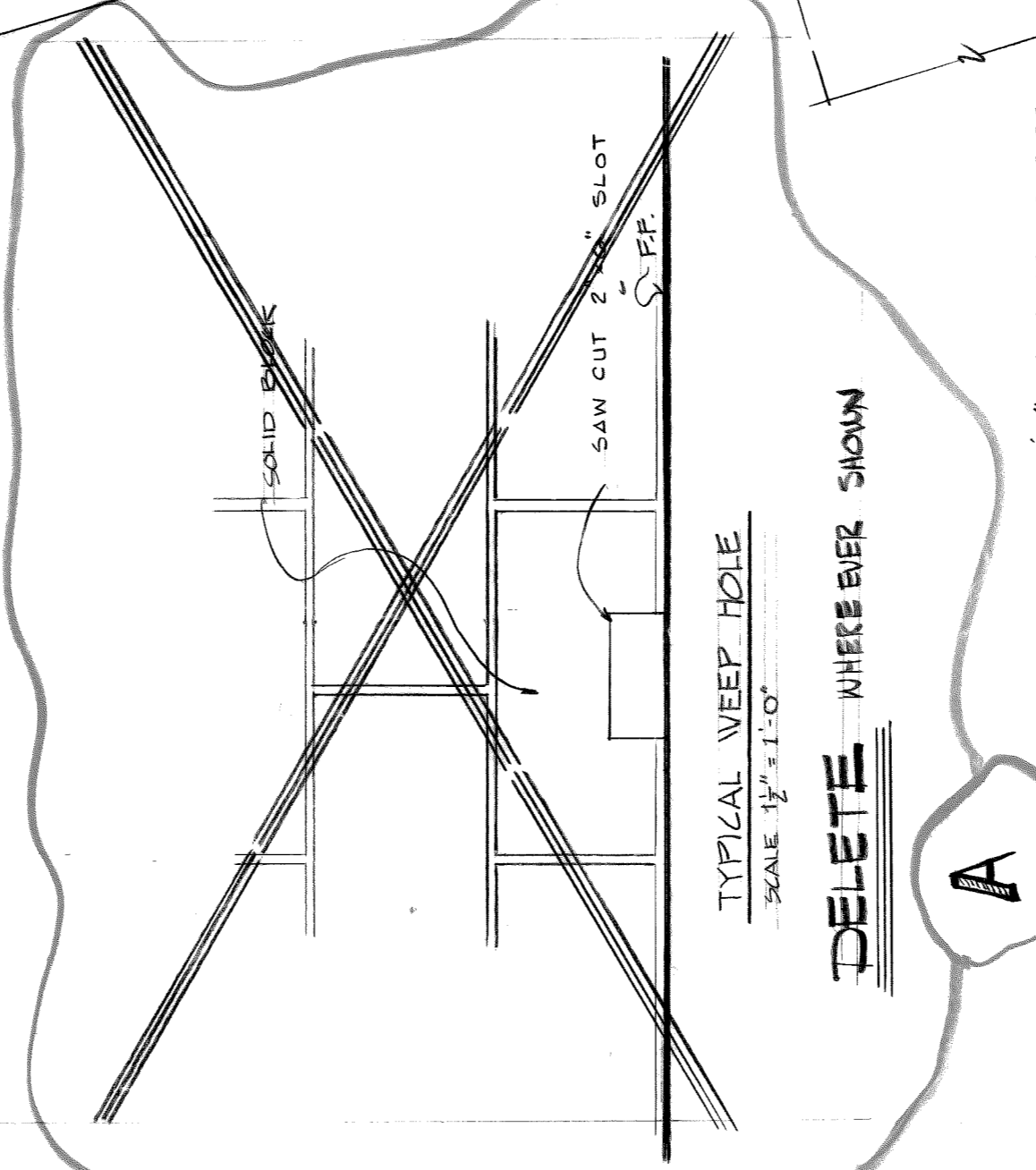
LOWERS
 1/4 GAUGE GALVANIZED STEEL CHANNEL FRAME - 1/4 GAUGE GALVANIZED STEEL BLADES SET AT 30° AND SPACED 5" CENTER TO CENTER - 1/4" MESH GALVANIZED WIRE SCREEN ON INSIDE - FIRE DAMPER INSIDE SCREEN (BY PAIR 14) - LOWERS TO BE LOWERS AND DAMPERS CO. MODEL NO. EL-100 WITH TYPE R FRAME AND FD-874 FIRE DAMPER INSTALLATION

THE TOP OF ALL DAMPERS AND LOWERS TO BE AT THE UNDERSIDE OF THE ROOF SLAB - PROVIDE 2 WALL ANCHORS PER JAMB AND CAULK PERIMETER ON FRONT AND BACK FACE - MOUNT THERMOSTATS 5'-0" ABOVE FLOOR

OPERATION
 DAMPERS OPEN ON TEMPERATURE RISE AND CLOSE ON TEMPERATURE FALL

TO PANEL R-5 IN FAN ROOM 1 R-8 IN FAN ROOM 4
THERMOSTAT R-6 IN UNIT SUB. ROOM R-7 IN FIRE EQUIP. ROOM

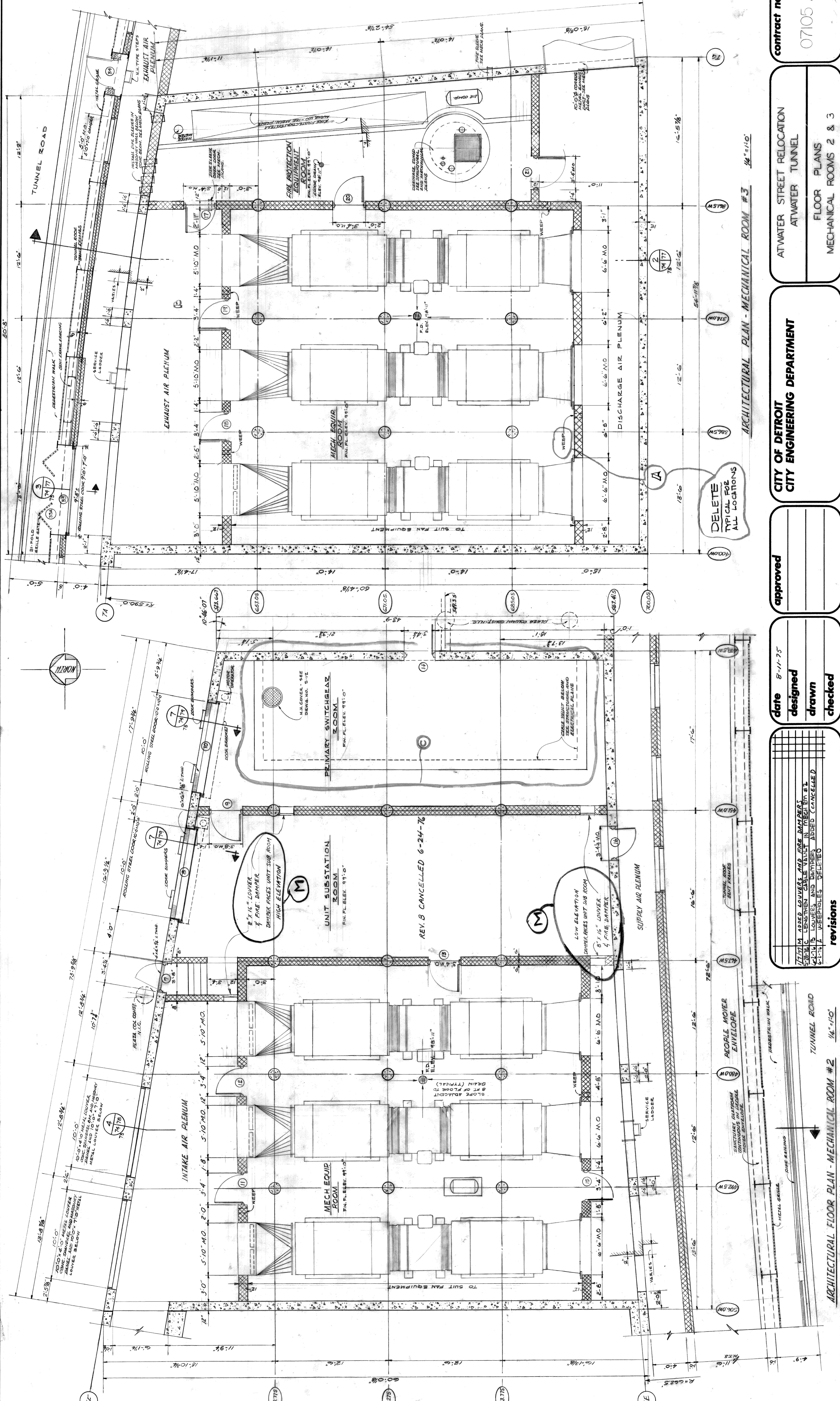
NOT OPERATOR



sheet 25 of 29
 drawing no: A 3
 contract no. 07105 A
 ATWATER STREET RELOCATION ATWATER TUNNEL
 FLOOR PLANS: MECHANICAL ROOMS 1 & 4
 CITY OF DETROIT CITY ENGINEERING DEPARTMENT
 approved
 date 8-11-75
 designed L.V. RLEI
 drawn ZLV
 checked
 revisions
 21-75 B LOWERS AND DAMPERS ADDED
 21-75 A WEEP HOLES DELETED

DETAIL OR
 LETTER OR
 NUMBER
 SECTION OR
 LINE STATION
 SHEET NO.
 NO. 18

ARCHITECTURAL FLOOR PLAN - MECHANICAL ROOM #1
 ARCHITECTURAL FLOOR PLAN - MECHANICAL ROOM #4



ARCHITECTURAL FLOOR PLAN - MECHANICAL ROOM #2

ARCHITECTURAL PLAN - MECHANICAL ROOM #3

revisions

7/17/76	ADDED LOUVERS AND FIRE DAMPERS TO SUBSTATION AND DAMPERS ADDED CANCELLED
8-1-76	LOUVERS AND DAMPERS ADDED CANCELLED
8-1-76	A DAMPERS DELETED

date 8-11-75
 designed
 drawn
 checked

approved

CITY OF DETROIT
 CITY ENGINEERING DEPARTMENT

AT WATER STREET RELOCATION
 AT WATER TUNNEL
 FLOOR PLANS
 MECHANICAL ROOMS 2 & 3

contract no.
 07105 A

sheet 24 of 31
 drawing no.
 A 2

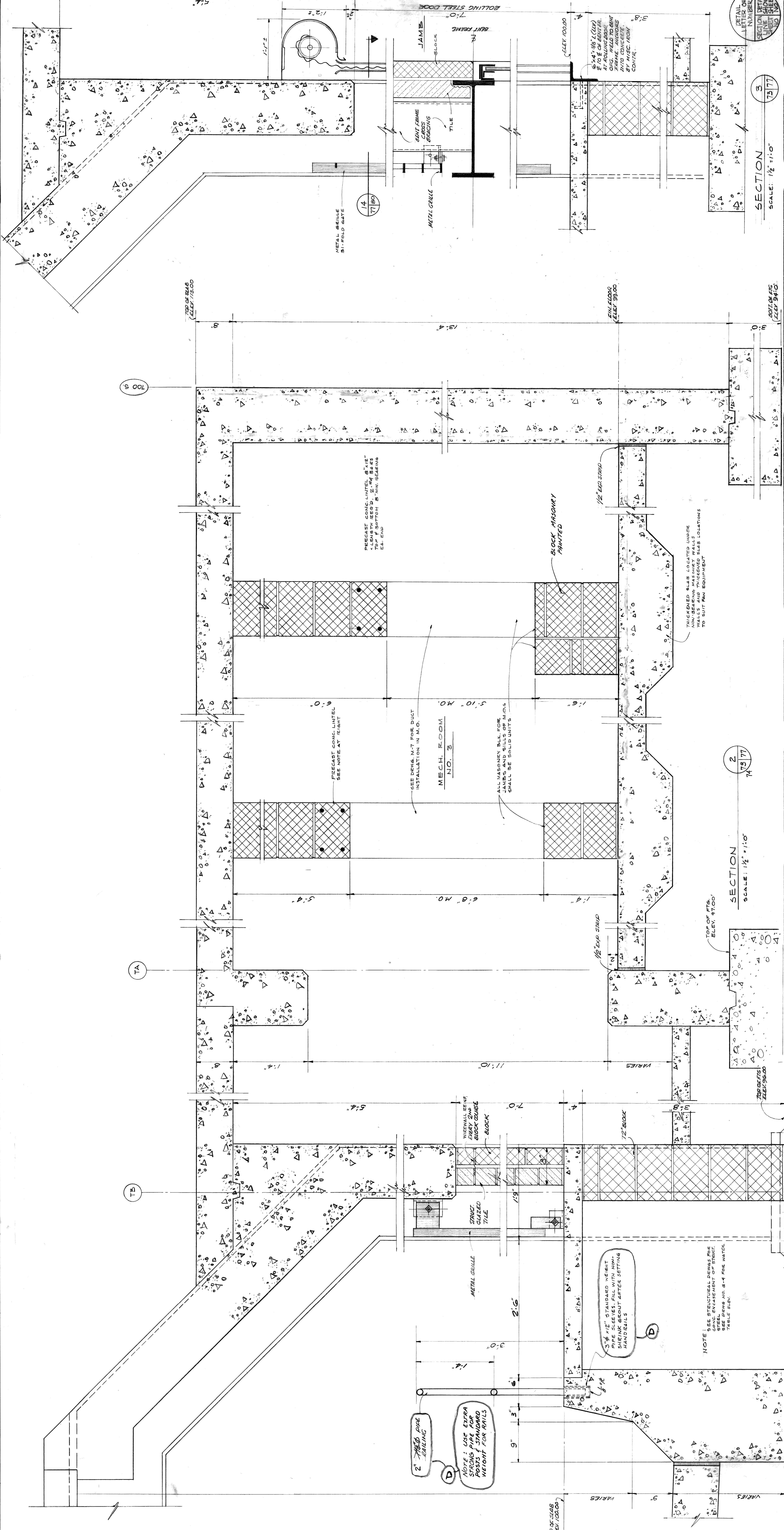
DELETE
 TYPICAL FOR
 ALL LOCATIONS

REV. B CANCELLED 6-24-76

LOW ELEVATION
 DAMPERS UNIT SUB ROOM
 8" x 16" LOUVER
 4" FIRE DAMPER

HIGH ELEVATION
 DAMPERS UNIT SUB ROOM
 8" x 16" LOUVER
 4" FIRE DAMPER

DETAIL
 NUMBER
 SECTION
 SHEET
 NO



700 S

TA

TB

2
73/77

SECTION
SCALE: 1/2" = 1'-0"

3
73/77

SECTION
SCALE: 1/2" = 1'-0"

revisions

NO.	DESCRIPTION	DATE

date 8-11-75
 designed L.W. KLEI
 drawn LNK. L.T.H.
 checked

approved

CITY OF DETROIT
 CITY ENGINEERING DEPARTMENT

SECTION - MECHANICAL ROOM NO. 3
 ATWATER STREET RELOCATION
 ATWATER TUNNEL

contract no. 07105 A
 drawing no. A 5
 sheet 22 of 31

NOTE: USE EXTRA STEERING PIPE FOR POSTS & STANDARD WEIGHT FOR RAILS

NOTE: SEE STRUCTURAL DRAWINGS FOR CONG. ENCASEMENT OF STRUT. SEE DRAWING NO. 8-4 FOR WATER TABLE ELEV.

NOTE: 3/4" STANDARD WEIGHT SHERK BRIGHT AFTER SETTING HANDRAILS

MECH. ROOM NO. 3
 ALL MASONRY B.L.L. FOR JAMBS AND SILLS OF M.O.S. SHALL BE SOLID UNITS

BLOCK MASONRY PRINTED

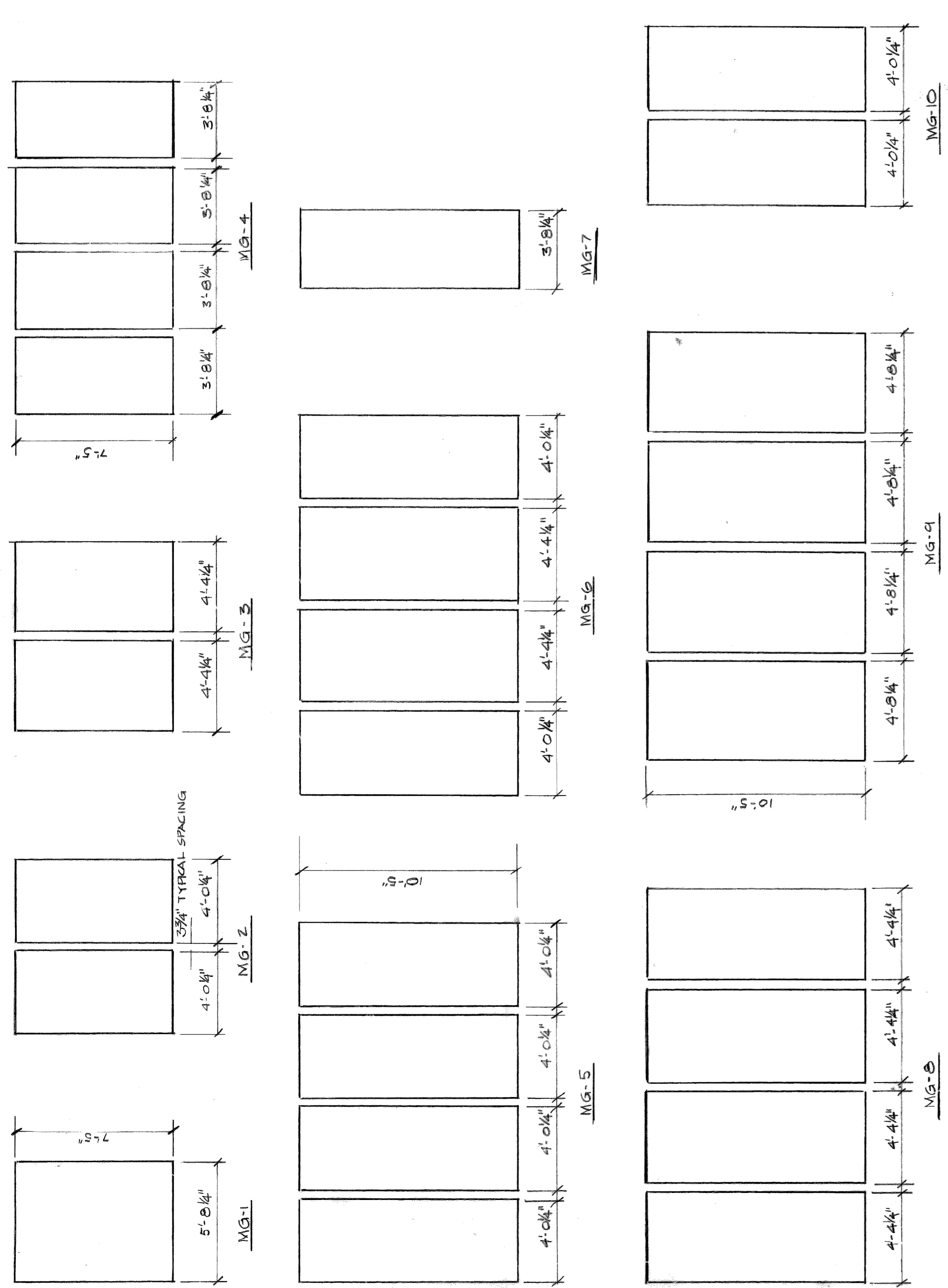
PRECAST CONG. LINTEL 6"x12" - LENGTH 2EED. 2" #4 BARS @ 12" ON CENTER @ BOTTOM 5" MIN. SLEEVING @ END

THICKENED SLAB LOCATED UNDER NON-BEARING MASONRY WALLS TO SUIT FAN EQUIPMENT

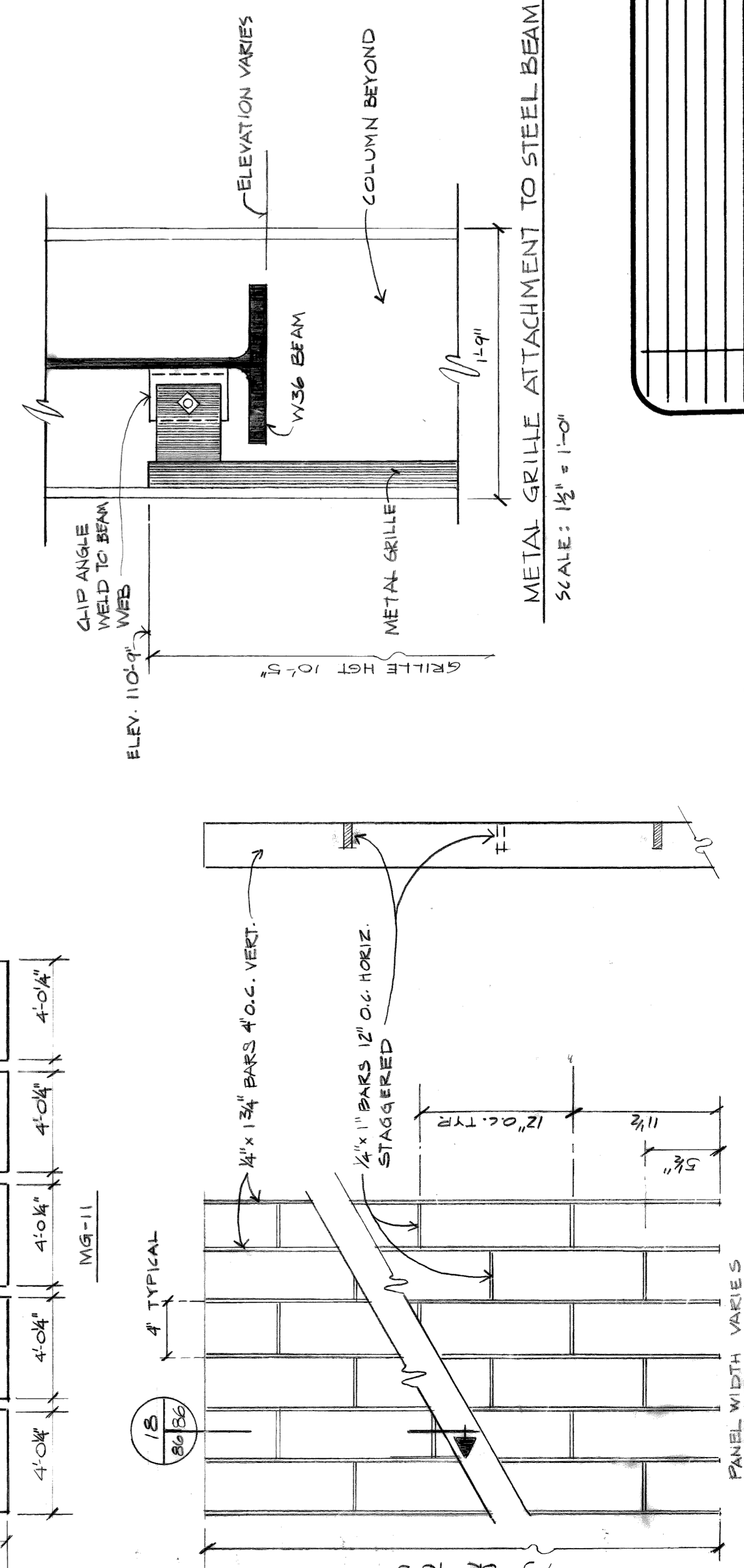
6"x4" x 1/8" L(CW) @ 12" O.C. OVER. ALL BE CONCRETE. O.C.G. HELD TO BENT FRAME. ANCHORS @ 12" O.C. FROM CONCRETE.

DETAIL NUMBER OR LETTER OR SECTION DETAIL NUMBER LINE SHOWING LOCATION OF DETAIL

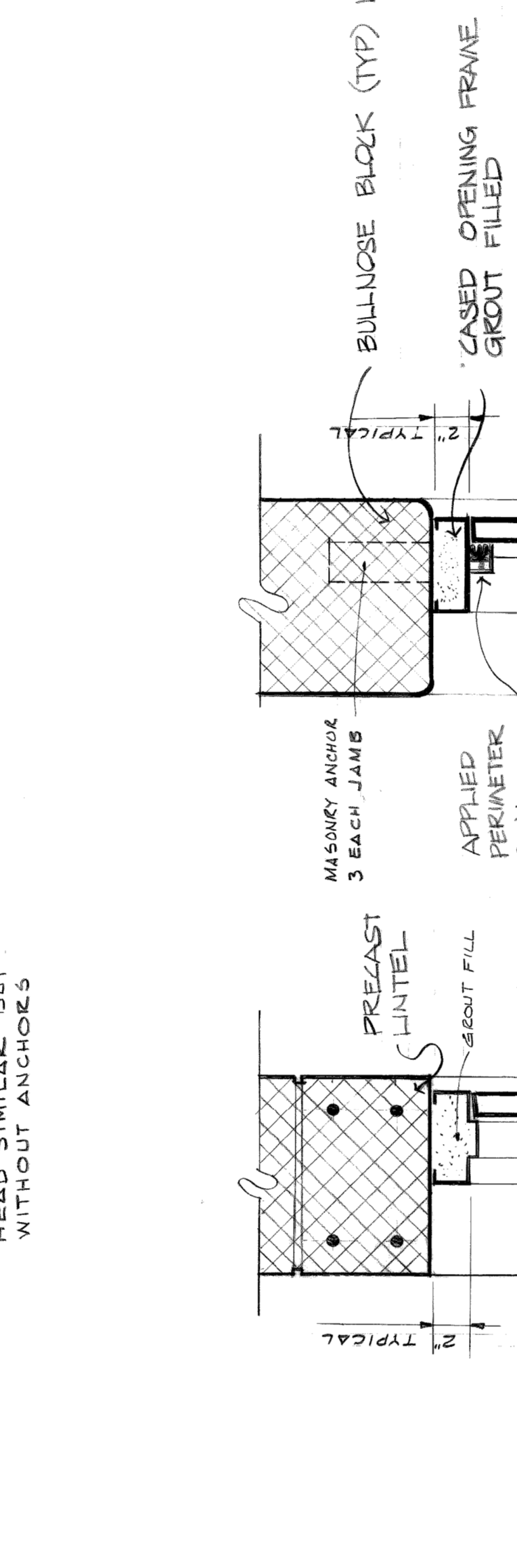
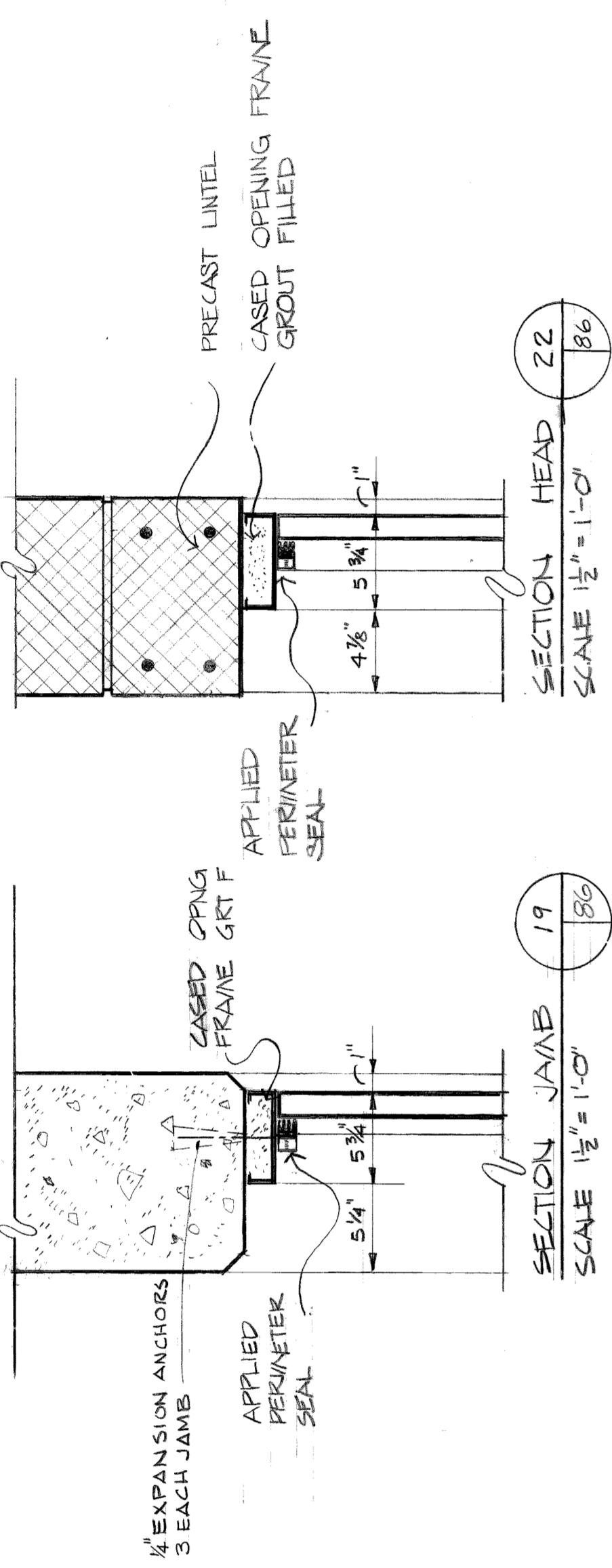
METAL GRILLE DETAILS



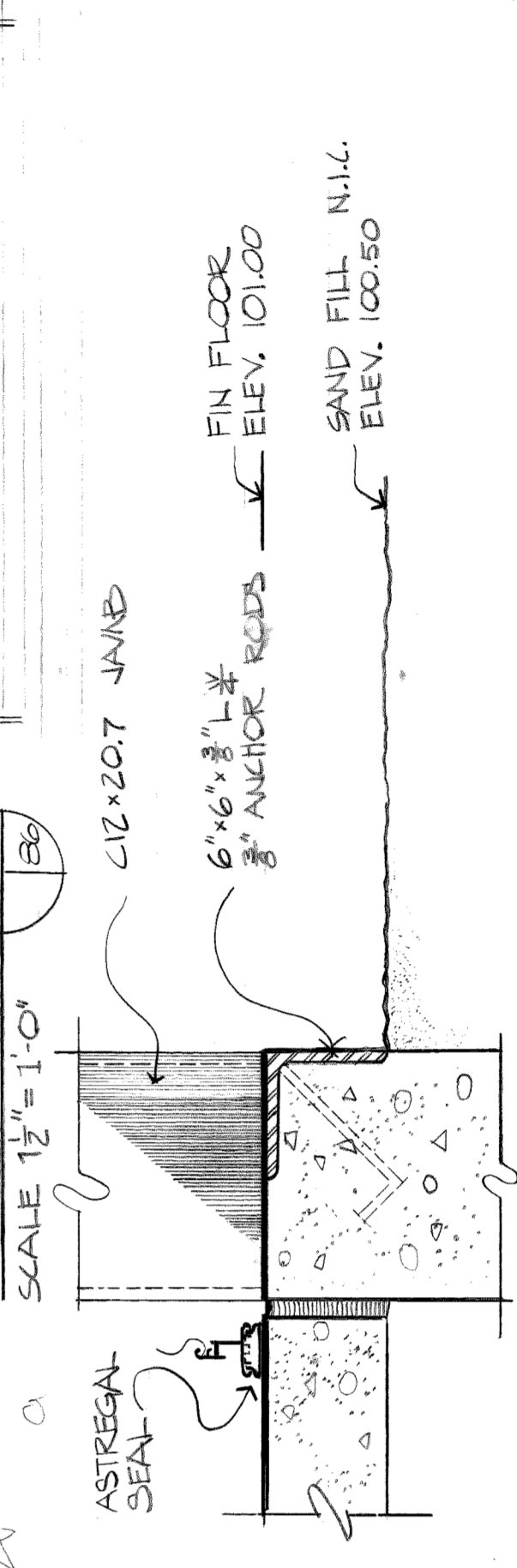
METAL GRILLE NOTES:
 ALL METAL GRILLE PANELS AND METAL GRILLE GATES SHALL BE MOUNTED WITH THE BOTTOM EDGE OF THE GRILLE 4" ABOVE THE FINISHED WALK WITH METAL GRILLE GATE PANELS SHALL BE 7.5" HIGH WITH WIDTHS AS SHOWN ON DRWG. NO. A8
 SEE DRWG. NO. A5 AND A-8 FOR DETAILS OF METAL GRILLE CONNECTION TO TUNNEL STRUCTURE.



SECTION 15
 SCALE: 3/4" = 1'-0"
 TYPICAL PANEL ELEVATION
 SCALE: 1/2" = 1'-0"
 PANEL WIDTH VARIES

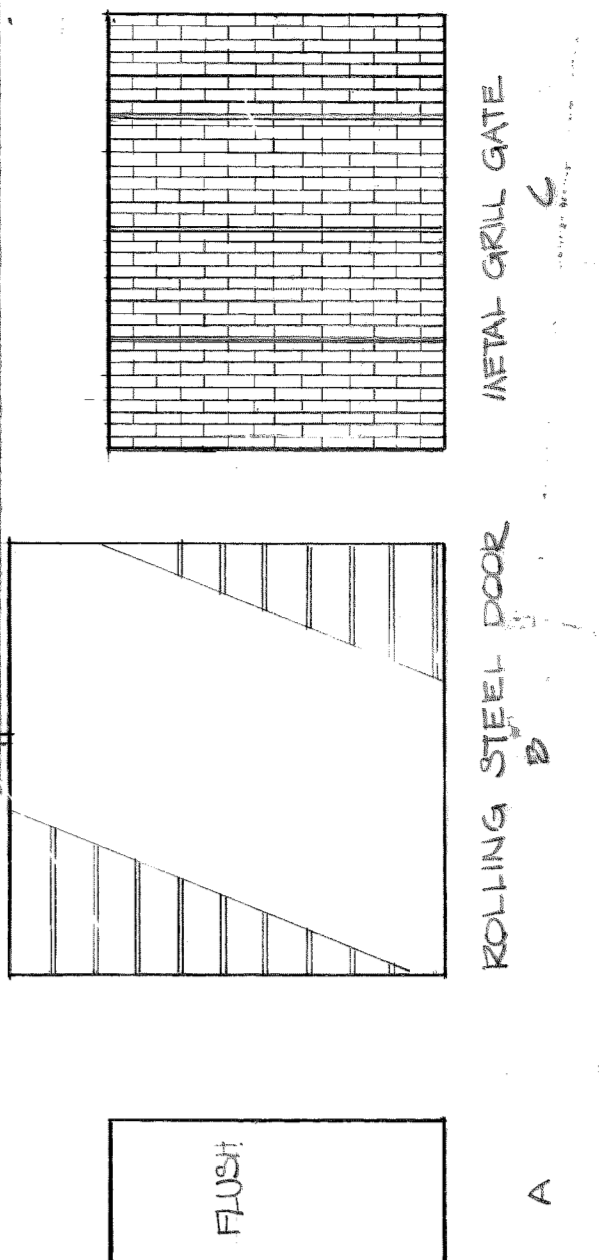


PAINTING
 • PAINT ALL CONCRETE AND MASONRY BLOCK WALLS IN PRIMARY SWITCHGEAR ROOM, UNIT SUBSTATION ROOM, FAN ROOMS 1 AND 2, THE AREAS OUTSIDE THESE FAN ROOMS NORTH OF COLUMN LINE "TE", FIRE PROTECTION EQUIPMENT ROOM, FAN ROOMS 3 AND 4, AND THE AREAS OUTSIDE THESE FAN ROOMS SOUTH OF COLUMN LINE "TA"
 • A 3-FOOT WIDE STRIPE SHALL BE PAINTED ACROSS THE ENTIRE FLOOR WIDTH OF THE SUPPLY AND EXHAUST PLENUMS, CENTERED ON SERVICE LADDERS AND EXIT DOORS
 • ISOLATED COLUMNS IN EQUIPMENT ROOMS SHALL BE UNPAINTED EXCEPT FOR A ONE FOOT HIGH COLOR BAND CENTERED 5'-6" ABOVE THE FLOOR



No.	SIZE	DOOR SCHEDULE		NOTES
		W/INT.	W/OINT.	
1	3'-0" x 7'-2"	A	HA	THRESHOLD
2	10'-0" x 9'-0"	B	STL	
3	3'-0" x 7'-2"	A	HA	
4	3'-0" x 7'-2"	A	HA	DOOR STOP
5	3'-0" x 7'-2"	A	HA	DOOR STOP
6	3'-0" x 7'-2"	A	HA	DOOR STOP
7	3'-0" x 7'-0"	A	HA	
8	10'-0" x 10'-0"	B	STL	
9	3'-0" x 7'-2"	A	HA	
10	10'-0" x 10'-0"	B	STL	
11	3'-0" x 7'-2"	A	HA	
12	3'-0" x 7'-2"	A	HA	
13	3'-0" x 7'-2"	A	HA	
14	3'-4" x 7'-0"	A	HA	THRESHOLD
15	3'-0" x 7'-2"	A	HA	
16	3'-0" x 7'-0"	A	HA	
17	3'-0" x 7'-2"	A	HA	
18	3'-0" x 7'-2"	A	HA	
19	3'-0" x 7'-2"	A	HA	
20	3'-0" x 7'-2"	A	HA	
21	3'-0" x 7'-2"	A	HA	
22	3'-0" x 7'-2"	A	HA	
23	3'-0" x 7'-2"	A	HA	
24	3'-0" x 7'-2"	A	HA	THRESHOLD
25	3'-0" x 7'-2"	A	HA	THRESHOLD
26	3'-0" x 7'-2"	A	HA	THRESHOLD
27	3'-0" x 6'-8"	A	HA	
28	3'-0" x 6'-8"	A	HA	
29	3'-0" x 6'-8"	A	HA	
30	3'-0" x 6'-8"	A	HA	
31	3'-0" x 6'-8"	A	HA	
32	3'-0" x 6'-8"	A	HA	
33	9'-0" x 7'-0"	B	STL	
34	8'-10 1/2" x 7'-5"	C	HA	
35	3'-0" x 6'-8"	A	HA	
36	3'-0" x 6'-8"	A	HA	
37	9'-3" x 7'-0"	B	STL	
38A	4'-3" x 7'-5"	C	STL	
38B	3'-0" x 6'-8"	A	HA	

CONTINUED
 • THE FOLLOWING SHALL NOT BE PAINTED:
 WALLS OF INTAKE AND DISCHARGE AIR PLENUMS - WALLS OF SUPPLY AIR PLENUMS BETWEEN COLUMN LINES "TE" AND "TD" - WALLS OF EXHAUST AIR PLENUMS BETWEEN COLUMN LINES "TB" AND "TA"



approved
 date 8-11-75
 designed L.T. HANSEN
 drawn C. WILSON
 checked

revisions

revisions

revisions

revisions