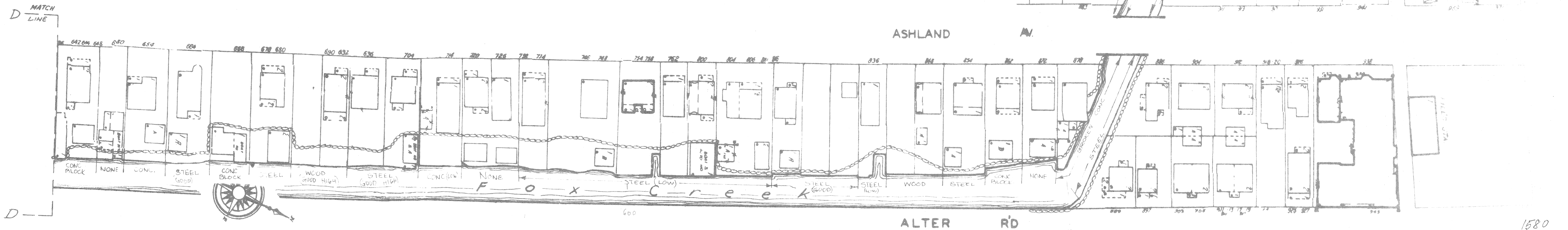
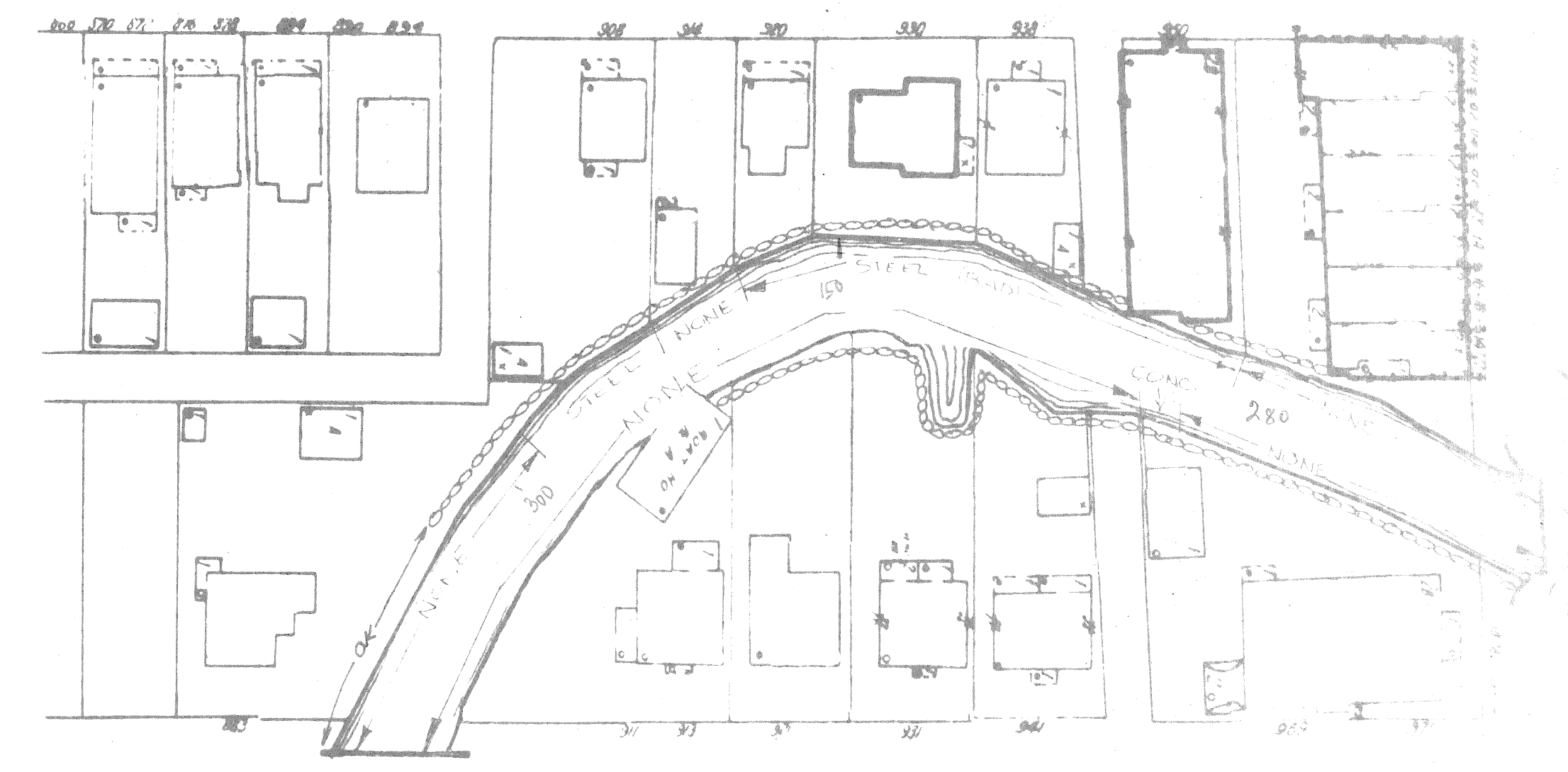


1590 Lift.

1580 Lift



1790 Lift

1580
1790
1337 0
880
4250

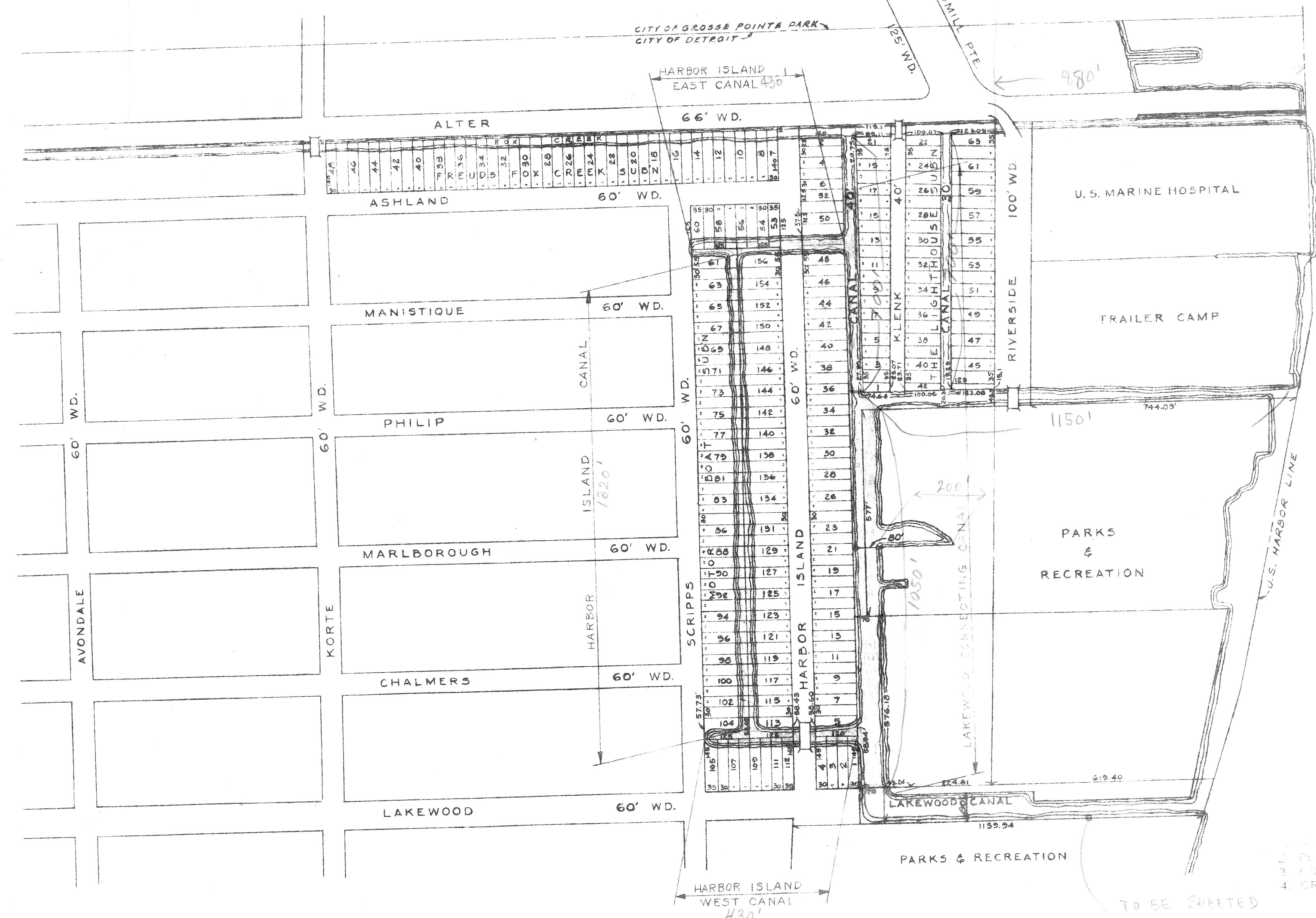
DESIGNED BY	APPROVED:
DRAWN BY <i>A TYLER</i>	
TRACED BY	
CHECKED BY	CITY ENGINEER
REFERENCE DRAWINGS	
COORD	DESCRIPTION
DRN	CHKD
APVD	DATE
REVISIONS LOCATED BY COORDINATES ON SHEET	
1	2
3	4
5	6

CITY OF DETROIT
DEPARTMENT OF PUBLIC WORKS
CITY ENGINEERS OFFICE
FOR

FOX CREEK AREA
FLOOD CONTROL
1"=50'

1580
1790
1337 0
880
4250

Total Fox Creek length ~ 4250' *in ft*



- DRAWING: HDX PW 4588
- GENERAL LOCATION PLAN AND INDEX
 - PLANT AREA FOR LAKWOOD CANALS
 - GENERAL PLAN FOR LAKWOOD CONNECTING CANAL
 - GENERAL PLAN FOR HARBOR ISLAND CANALS

TO BE SHEETED UNDER PW HDV CONTRACT #1974
 # 220,000
 # 1,700,000

Total
 10230 Lin ft CANALS
 SHEETING 20460 Lin ft @ \$80⁰⁰/ft = 1,636,800
 (Both -10...)
 Say \$1,700,000

COMPLETED 9-12-65
 U.S. MARINE SALVAGE

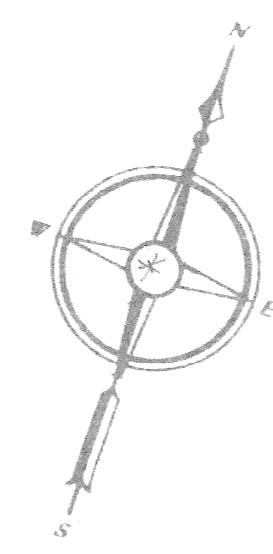
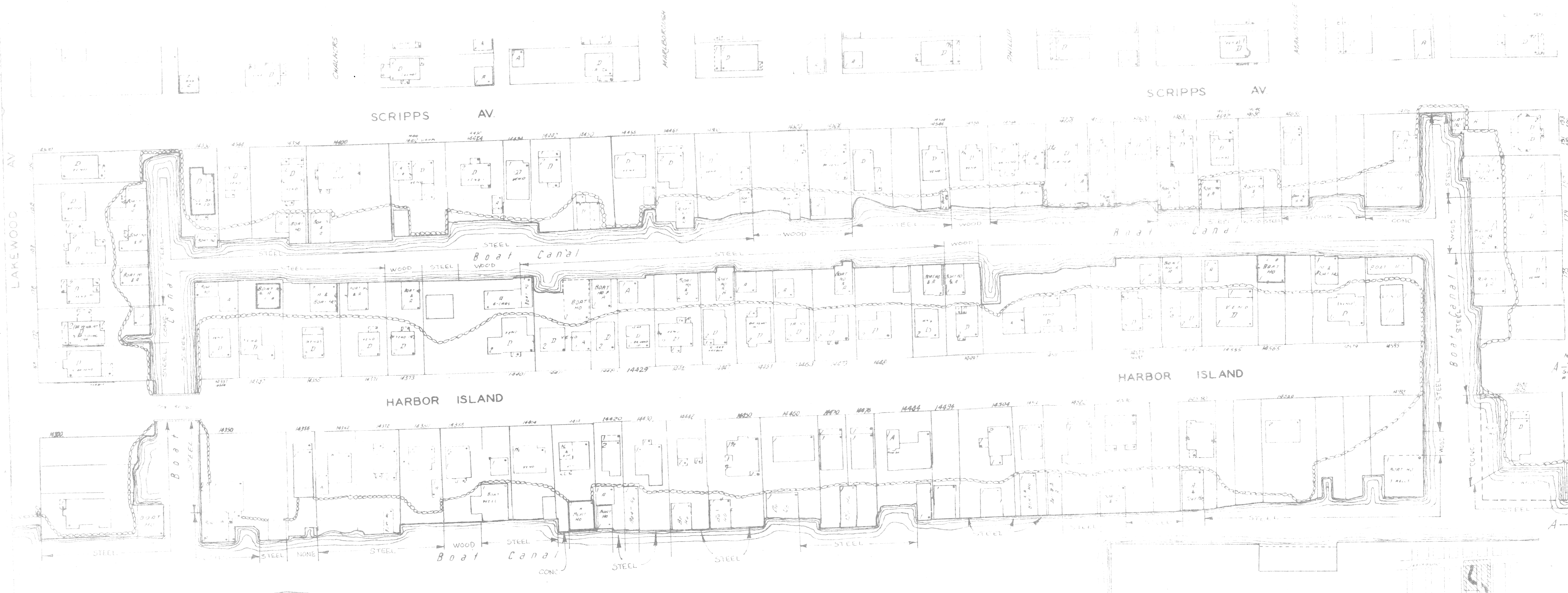
SCALE: 1" = 200'

CITY OF DETROIT
 DEPARTMENT OF PUBLIC WORKS
 CITY ENGINEERS OFFICE
 FOR
 THE DEPARTMENT OF PUBLIC WORKS

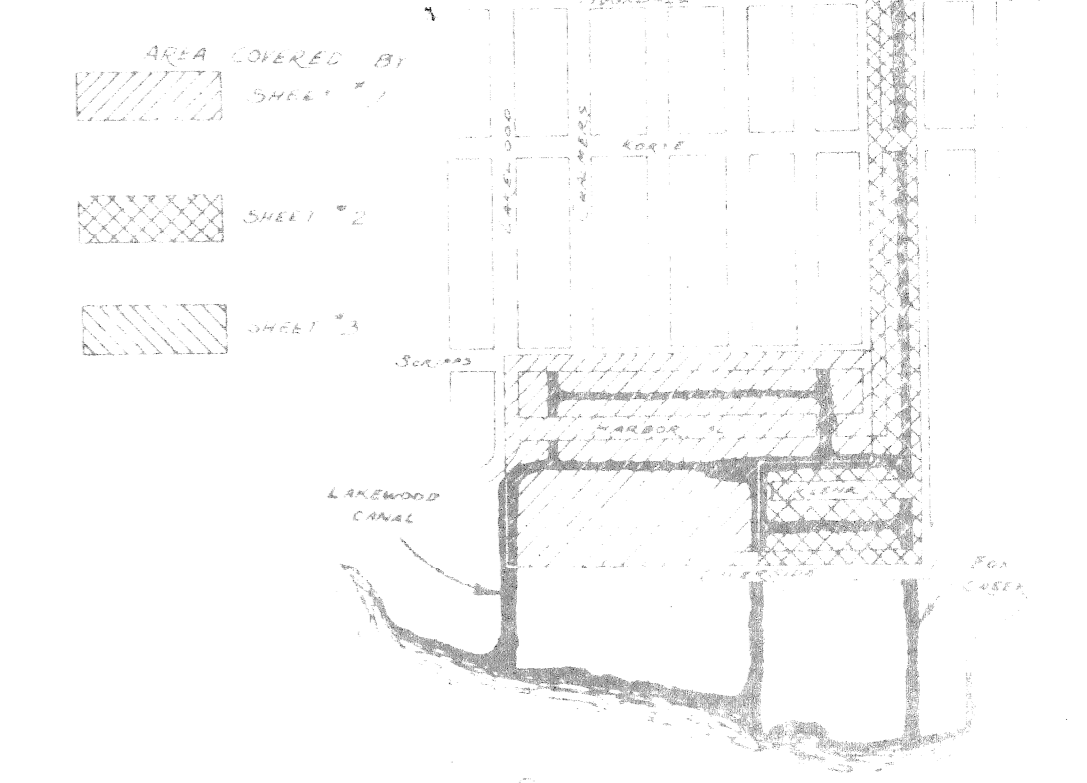
DREDGING OF HARBOR ISLAND
 AND LAKWOOD CANALS
 GENERAL LOCATION PLAN AND INDEX

DESIGNED BY	<i>Henry Hale</i>	APPROVED:	
DRAWN BY	<i>P. Lentick</i>	SANITARY ENGINEER	
TRACED BY	<i>P. Lentick</i>	ASST. CITY ENGINEER	
CHECKED BY	<i>L. E. Suter</i>	CITY ENGINEER	

DEP-12-310
SHEET 7 OF 14 SH
CONTRACT No. PW-
DRWG No.
DATE August



EL. 100'



AO 13-370

CITY OF DETROIT
DEPARTMENT OF PUBLIC WORKS
CITY ENGINEERS OFFICE

FOX CREEK AREA

DESIGNED BY	APPROVED:
DRAWN BY A TYRER	