

PLAN

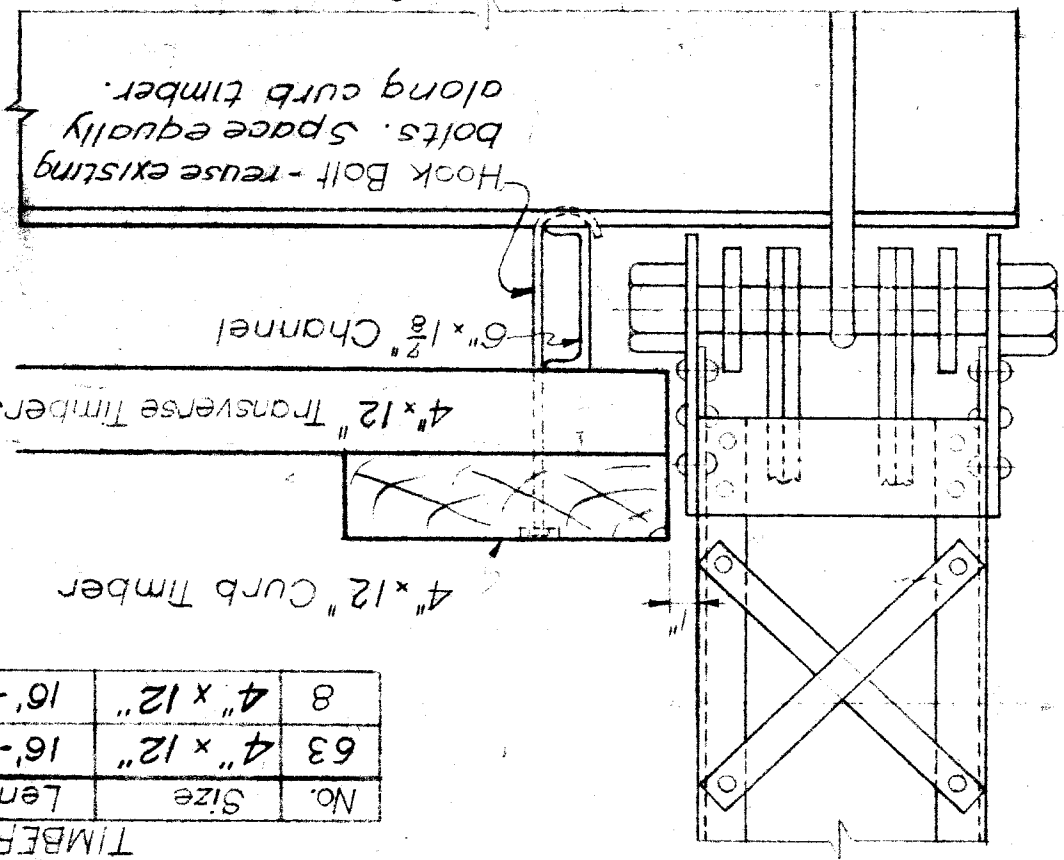
TIMBER REQUIRED

No.	Size	Length	F.B.M. Location
63	4" x 12"	16'-0"	Transverse
8	4" x 12"	16'-0"	Curb
			<b>Total</b>
			<b>4544</b>

4" x 12" Curb Timber

4" x 12" Transverse Timbers 16'-0" long

6" x 1 7/8" Channel



SEC A-A

NOTE  
 All timber to be given a thorough brush coating of "Penta".  
 Curb timber is to be adequately spiked to all transverse timbers.  
 All timber sizes given are Nominal sizes.

CITY OF DETROIT  
 DEPARTMENT OF PUBLIC WORKS  
 HIGHWAY & EXPRESSWAY DIVISION  
 ROUGE PARK  
 SW 272 PONY TRUSS OVER RIVER ROUGE  
 DECK RENEWAL

JOB No. M-BW 272  
 DRWG No. A-1  
 Date AUG. 1957

OWN. G. MOLNAR  
 CKD. C. Lederer  
 APPR. R. Hicks