

DETAIL-A
Detail showing the location of 3/4" Exp. Hook Bolts. (For Exp. Hook Bolt Detail, see Sht. 5)

SECTION C-C
Steel Sheet Piling at Section C-C only

SECTION B-B
Top of Conc. Pad El. 584.71 Pier #1 El. 584.59 Pier #2

SECTION D-D
For other Details, see Sect. C-C

NO.	TIMBER PILES		Total
	No. Req'd.	Length Each	
PIER #1	15	22'	330
PIER #2	15	22'	330
Total	30	22'	660

Note:
E.F. Denotes Each Face. For Bevel and Molding Details, see Sht. R8. Position Dowels shall be set accurately to a template. For existing and additional concrete quantities and foundation excavation quantities, see the concrete quantities schedule. Excavation shall be measured to the outside of the footing outline, where the concrete is poured against steel sheet piling. No additional allowance in concrete and excavation quantities will be made regardless of the steel sheet piling used.
The tops of Pier Extensions shall be finished to a true plane at the elevation shown and shall not vary more than 1/8" under a ten foot straight edge or more than 1/16" under any bearing.
T.P. denotes "Test" Pile.
All Piles shall be driven to a minimum bearing capacity of 25 tons. (See Supplemental Specifications)

Steel Sheet Piling left in place shall be of the continuous interlock type, either new or used in good condition, weighing not less than 22 pounds per square foot of wall, and shall be furnished with suitable connecting and corner pieces. Steel sheet piling left in place shall be driven to its final position before pouring adjacent concrete.

POUR	CONCRETE QUANTITIES GRADE-A (cu. yds)	
	PIER #1	PIER #2
A	4.4	4.4
B	9.5	8.5
C	48.8	48.8
D	3.7	3.7
E	17.5	17.5
F	38.1	38.1
Total	121.0	121.0
Total Pier-1 & 2	242.0	

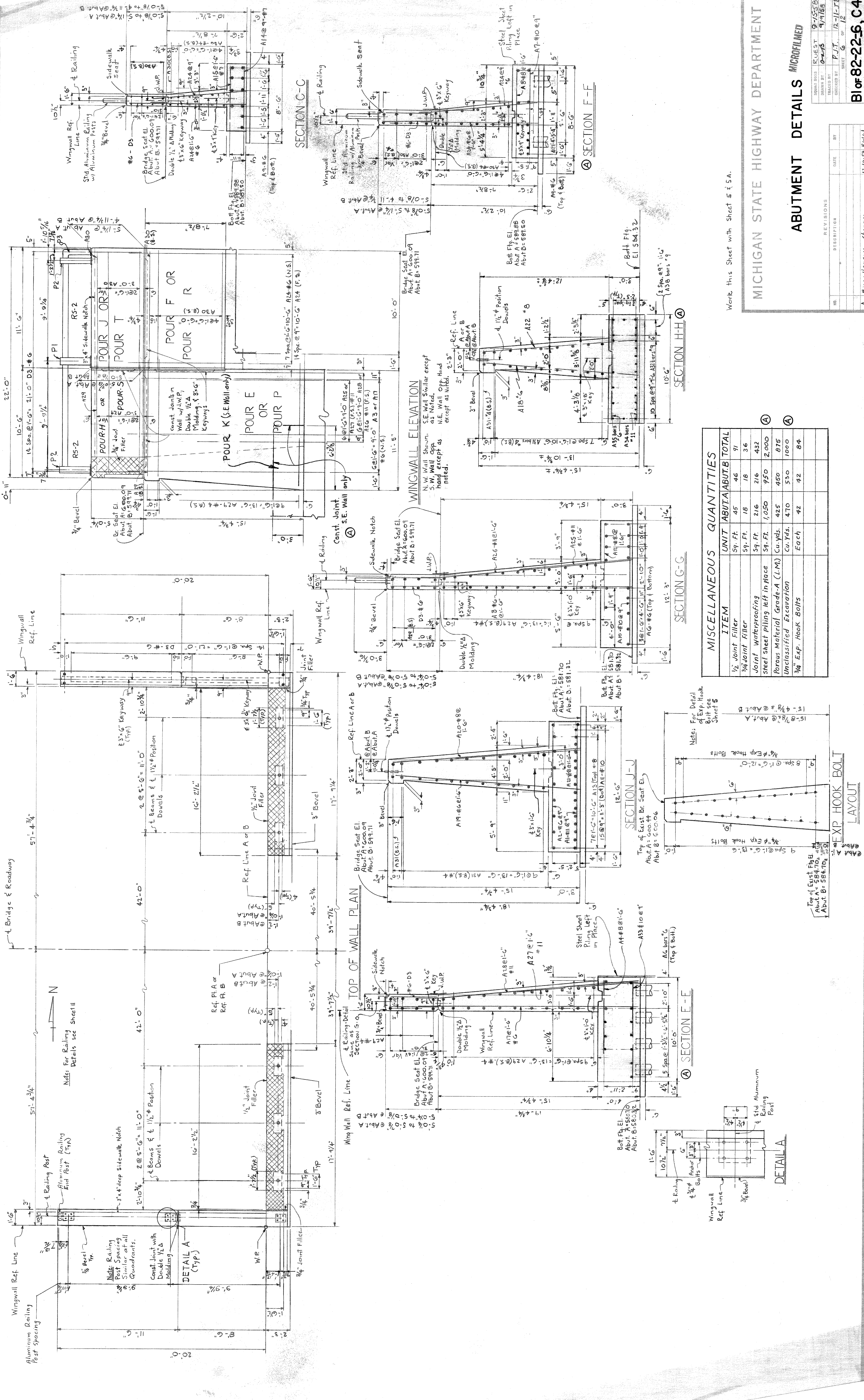
ITEM	MISCELLANEOUS QUANTITIES	
	UNIT	QUANTITIES
Unclassified Excavation	Cu. Yds.	17
Steel Sheet Piling left in Place	Sq. Ft.	285
3/4" Expansion Hook Bolts	Each	42
		42
		84

MICHIGAN STATE HIGHWAY DEPARTMENT
PIER DETAILS
MICROFILMED

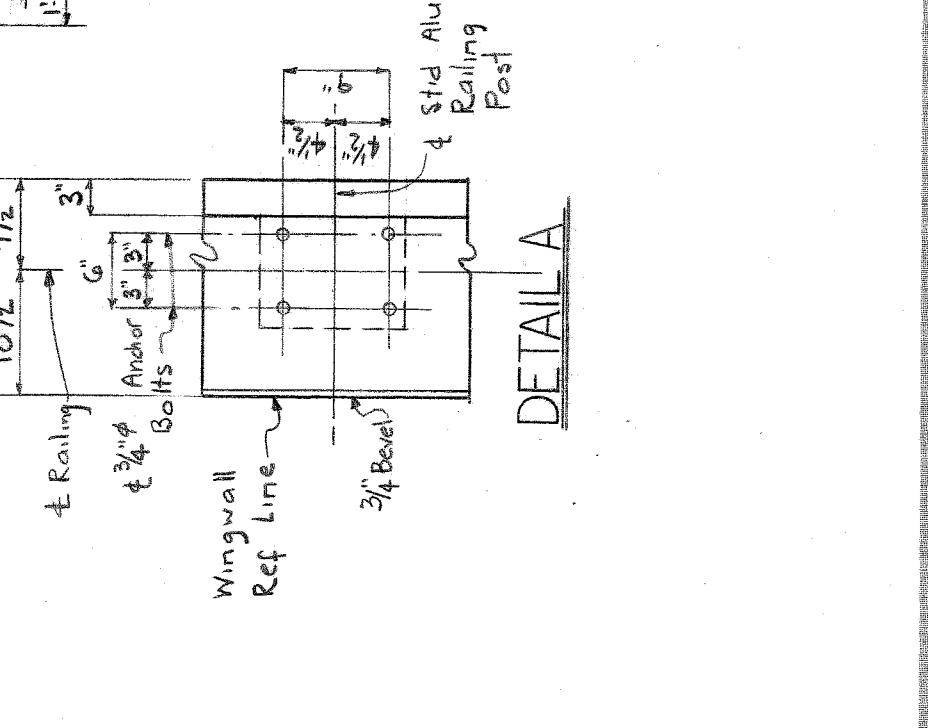
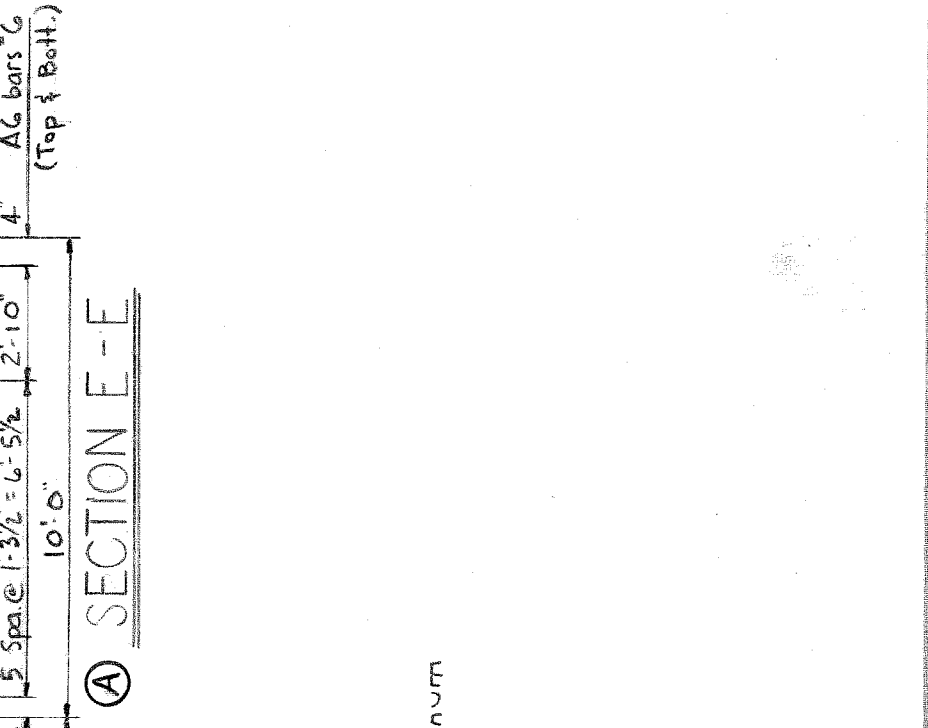
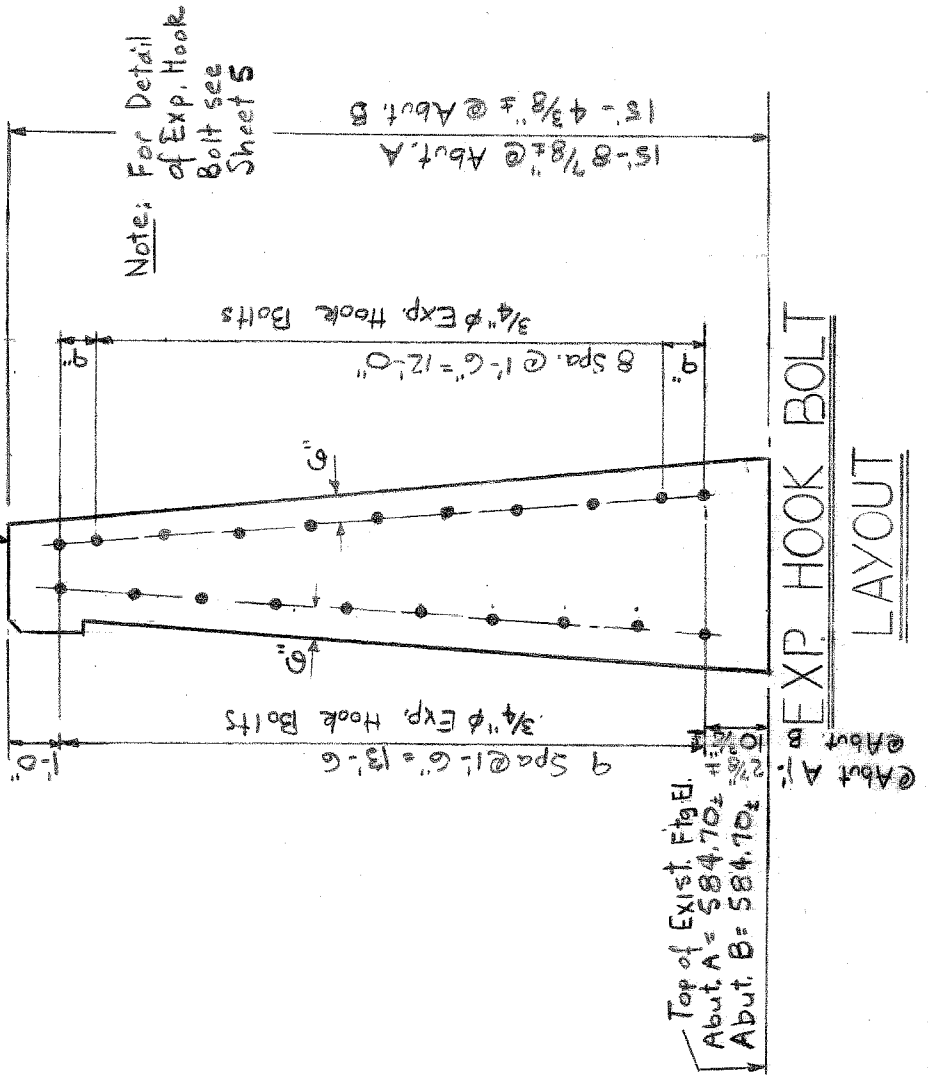
REVISIONS
NO. DESCRIPTION DATE BY

INWARD BUS Request 9-15-58
DRAWN BY Patel 9-2-58
CHECKED BY P.J.T. 9-10-58
SHRIT 7 OF 12

A So. Pier Extension 28'5" removed 1/14/58 F.J.T.



MISCELLANEOUS ITEM	QUANTITIES	UNIT	ABUTMENT	TOTAL
1/2" Joint Filler	59.77	cu. ft.	46	97
3/4" Joint Filler	59.77	cu. ft.	18	36
Joint Waterproofing	59.77	sq. ft.	216	432
Steel Sheet piling left in place	59.77	sq. ft.	1,050	2,000
Porous Material Grade-A (L.M.)	425	cu. yds.	450	875
Unclassified Excavation	470	cu. yds.	550	1,000
3/4" Exp. Hook Bolts	Each		42	84



EXP. HOOK BOLT LAYOUT

Work this Sheet with Sheet 5 & 5A.

MICHIGAN STATE HIGHWAY DEPARTMENT

ABUTMENT DETAILS MICROFILMED

Bl of 82-22-5, C4

FILE-BW 271-28

SOILS DIST. 9-15-50
 DRAWN BY: P.J.T. 9/15/50
 CHECKED BY: P.J.T. 12-1-50
 SHEET 6 OF 12

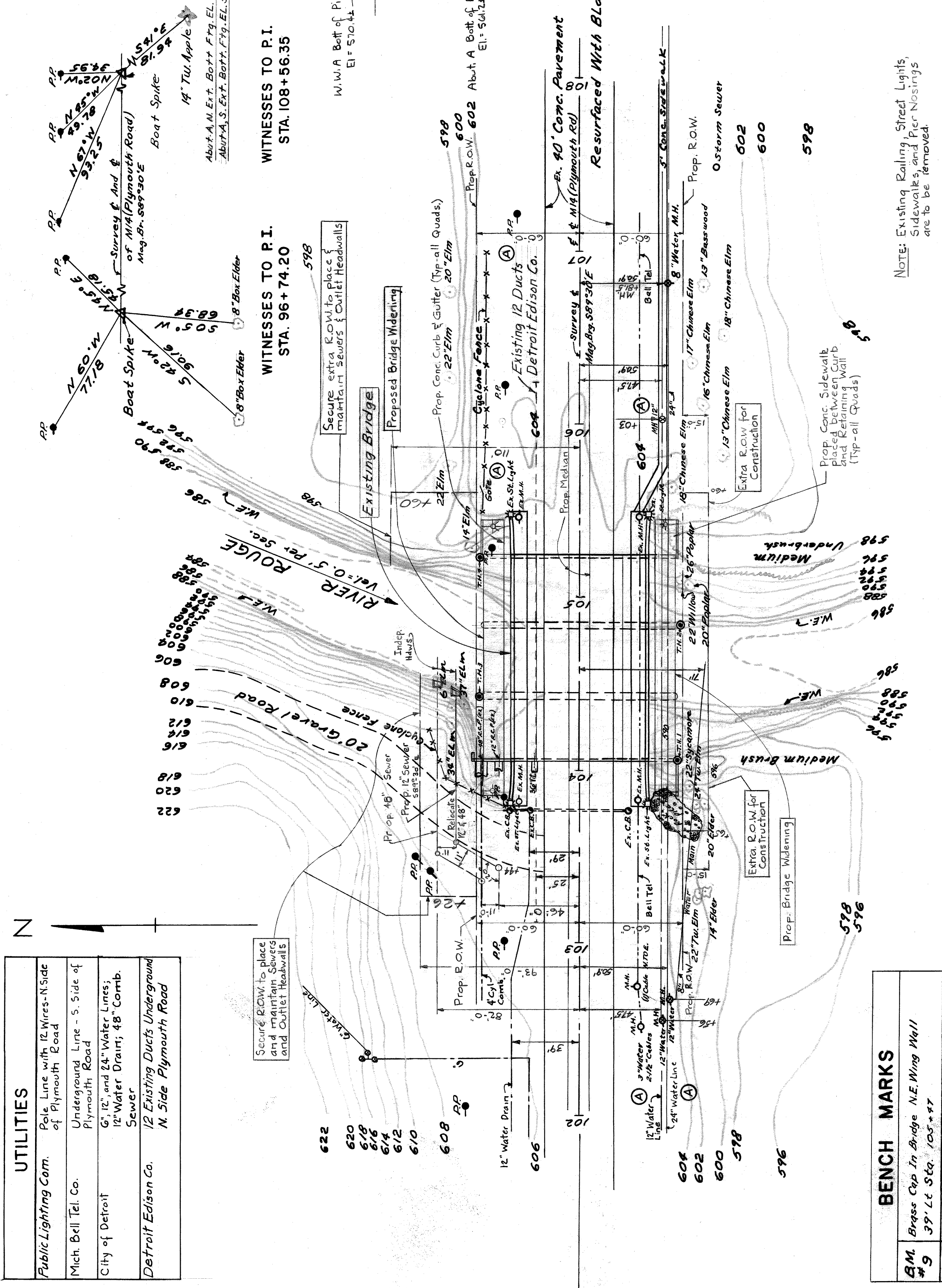
REVISIONS

DATE BY

DESCRIPTION

A. Miscellaneous Changes 12-10-50 K.W.U.

UTILITIES	
Public Lighting Com.	Pole Line with 12 Wires - N Side of Plymouth Road
Mich. Bell Tel. Co.	Underground Line - S. Side of Plymouth Road
City of Detroit	6" 12" and 8" Water Lines, 12" Water Main, 48" Comb. Sewer
Detroit Edison Co.	12 Existing Ducts Underground N. Side Plymouth Road

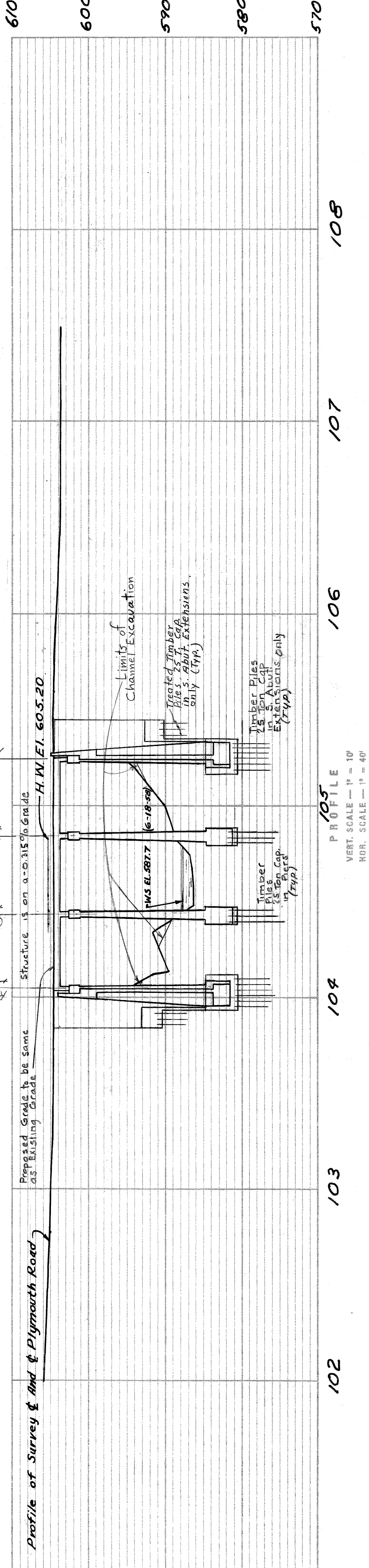


BENCH MARKS	
B.M. #9	Brass Cap In Bridge N.E. Wing Wall 39' Lt Sta. 105+77
B.M. #10	Brass Cap In Man. Box S. Sidewalk 50' Rt. Sta. 111+65

EXISTING STRUCTURE
Three 40' Concrete T-Beam Spans With a 60' Roadway, With 8' Sidewalks On Each Side

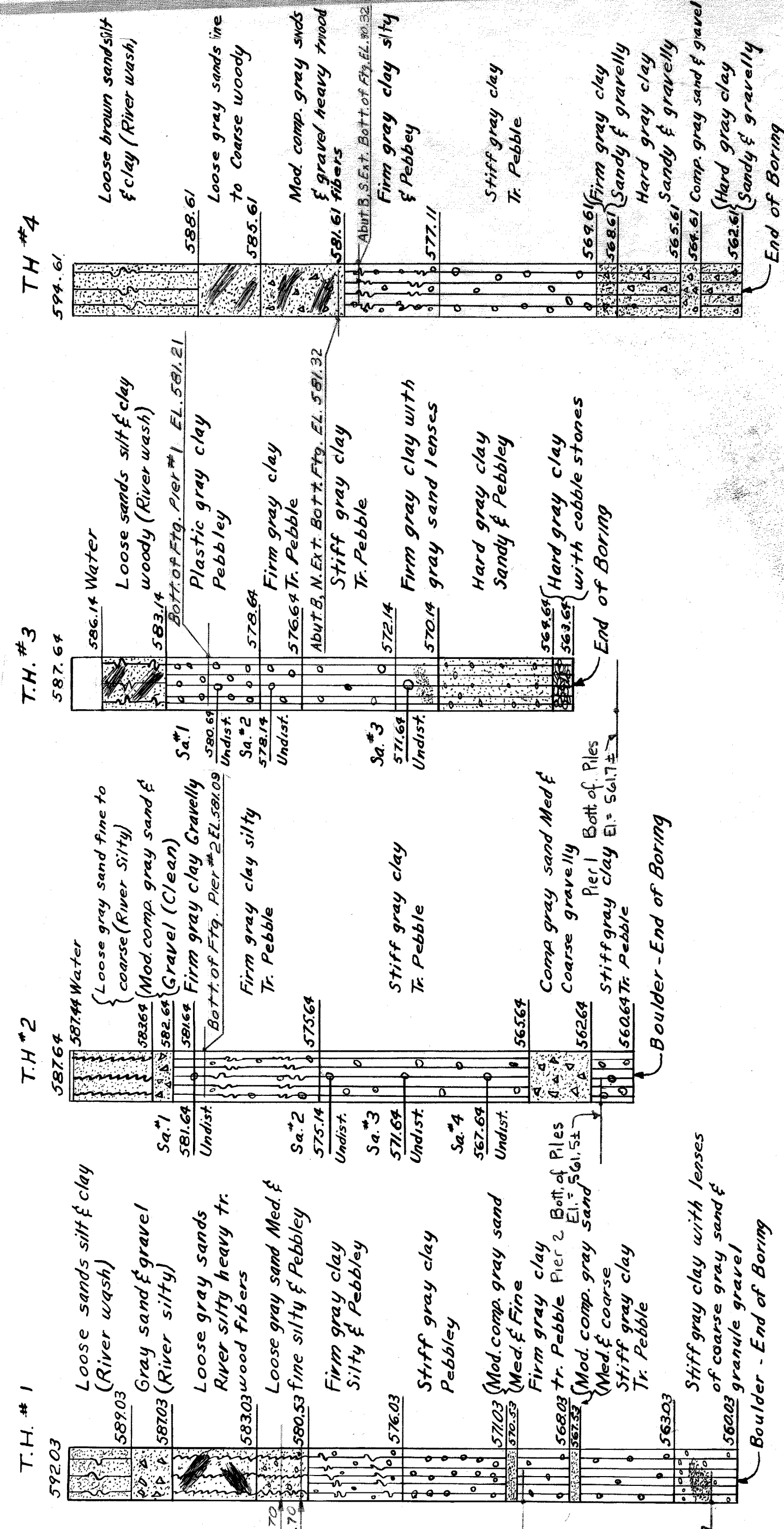
NOTE: Existing Railing, Street Lights, Sidewalks, and Pier Nosings are to be removed.

EXISTING STRUCTURE
Three 40' Concrete T-Beam Spans With a 60' Roadway, With 8' Sidewalks On Each Side

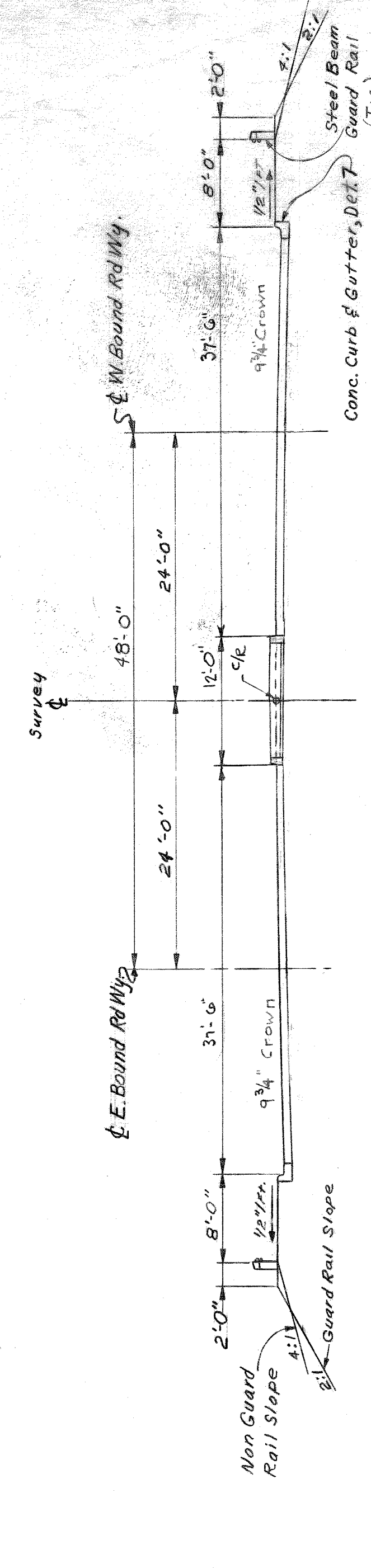


VERT. SCALE - 1" = 10'
HOR. SCALE - 1" = 40'

LOG OF BORING



NOTE: Consistency determined by inspection of samples and substantiated by soils resistance to casing and jet rod, all T.H.'s. The river bank in the vicinity of T.H. #1 is covered with 36 to 48 boulders approximately 50 of them which will have to be removed. It was necessary to start T.H. #1, 3 or 4 times before we could get through the first 4' due to boulders and cobbles. This was also true at T.H. #3; however there are no boulders laying on the surface in this area.



NOTE: These plans include removing portions of existing bridge. Construction of proposed bridge including median on bridge placing steel sheet piling and porous material Grade A. All other work shown on these plans are detailed and itemized on the road plans.

CONTROL SECTION NO 82101U

MICHIGAN STATE HIGHWAY DEPARTMENT
M-14 XING THE RIVER ROUGE IN THE CITY OF DETROIT
GENERAL PLAN OF SITE

APPROVED: *J. J. Cook* 9/17/58
APPROVED: *W. J. ...* 9-19-58

DESIGNED BY: *W. J. ...*
CHECKED BY: *W. J. ...*
DATE: 9/17/58

REVISIONS

NO.	DESCRIPTION	DATE	BY

A. M. G. ... of ...
11-10-58 E.M.W.

Bl: 82222-6,C4

BOH of 82101-C4 FILE - BW 271-3