

Mark	Number	Size	Remarks	Length
A1	126	3/4"	Bent	3'-6"
A2	70	3/4"	Straight	10'-6"
A3	76	1/2"	"	34'-6"
A4	140	3/8"	"	15'-9"
A5	212	1/2"	"	11'-6"
A6	16	1/2"	"	27'-6"
A7	28	1/2"	Bent	33'-0"
A8	56	3/4"	Straight	17'-6"
A9	12	3/4"	"	3'-0"
A10	36	1/2"	"	29'-6"
A11	140	3/4"	Hooked	11'-3"
A12	144	7/8"	Bent	8'-6"
A13	52	1"	Straight	28'-0"
A14	186	1"	Hooked	10'-4"
A15	68	7/8"	Straight	6'-0"
A16	74	1"	"	11'-0"
A17	212	7/8"	Hooked	12'-0"
A18	108	3/4"	Bent	8'-4"
A19	108	1/2"	Straight	8'-0"
A20	24	1/2"	"	26'-0"
A21	20	1"	"	26'-0"
A22	108	1"	Hooked	10'-0"
A23	20	3/4"	"	9'-6"
A24	11	1"	Straight	24'-0"

GENERAL NOTES
 Concrete mix for footings to be 1:2 1/2:4.
 Concrete mix above footings to be 1:2:3.
 All coarse aggregate: 1 1/2".
 Chamfer all exposed edges 1".
 Exposed concrete surfaces to be rubbed as soon as forms are removed. No cement grout to be used on rubbed surfaces (use power grinder).
 All reinforcing bars securely wired at intersections and at laps. Lap all bars 40 diameters.
 Locate construction joints as shown. No concrete shall be placed until bars are encased and securely fastened in place.
 Form lumber, for exposed surfaces, not less than 2" thick, dressed on 4 sides, and not over 8' wide.

CITY OF DETROIT
 DEPARTMENT OF PARKS & BOULEVARDS
 OFFICE OF CITY ENGINEER

BRIDGE OVER RIVER ROUGE
 (SOUTH OF PLYMOUTH ROAD)
RIVER ROUGE PARK

SUBSTRUCTURE DETAILS

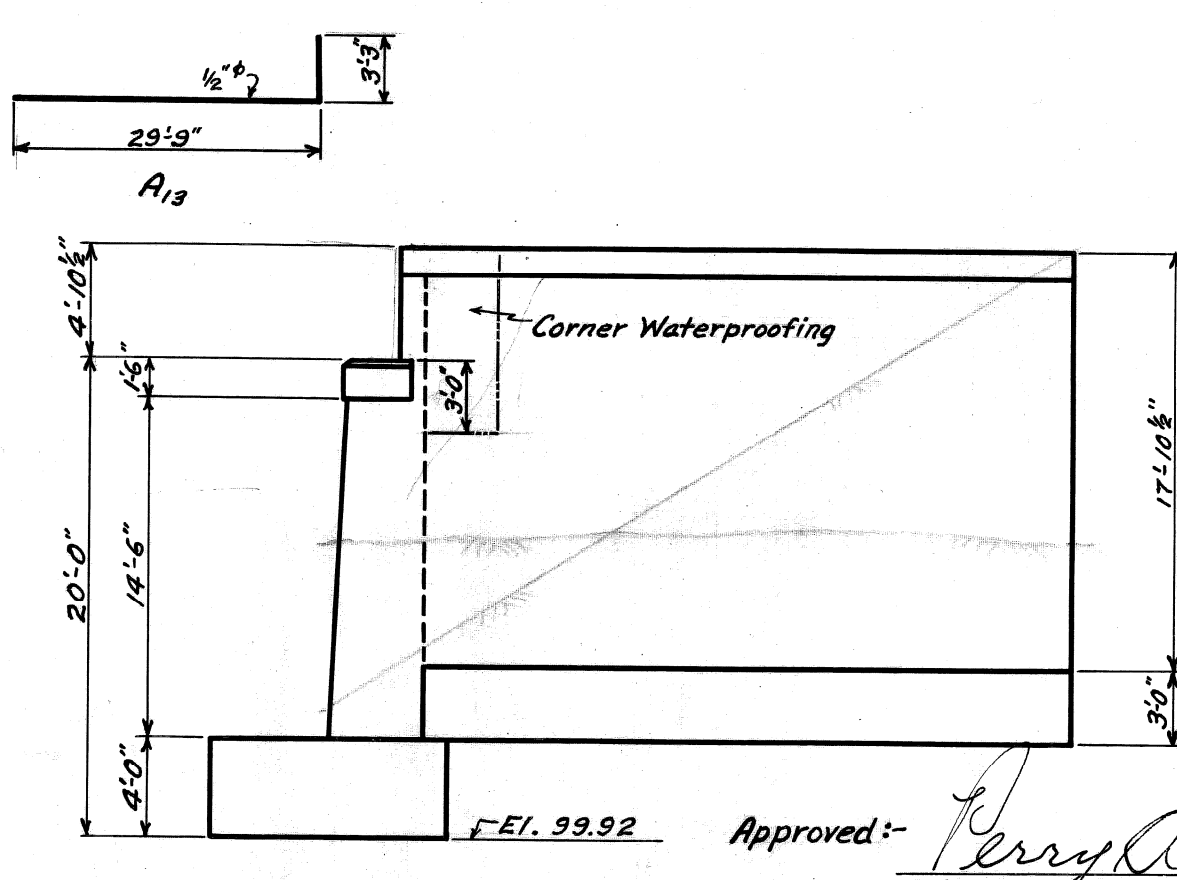
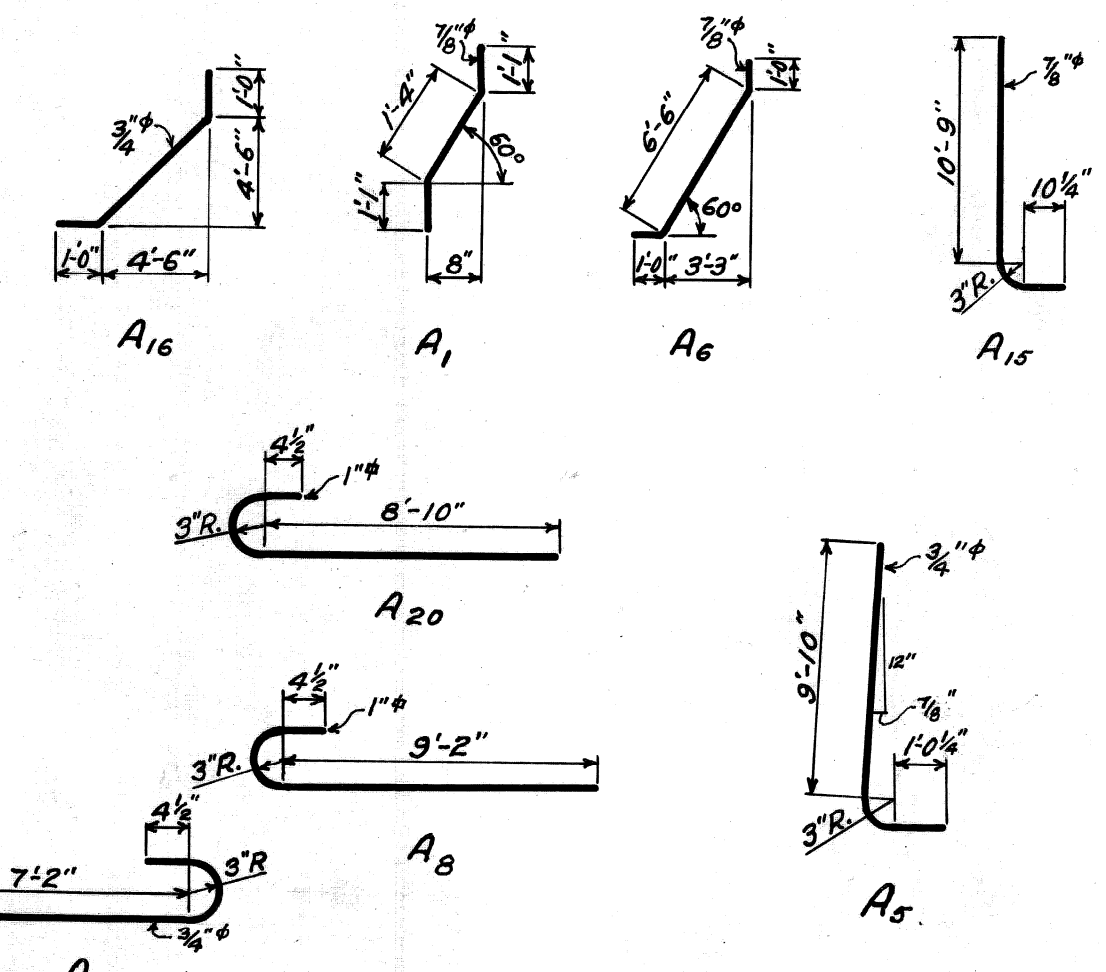
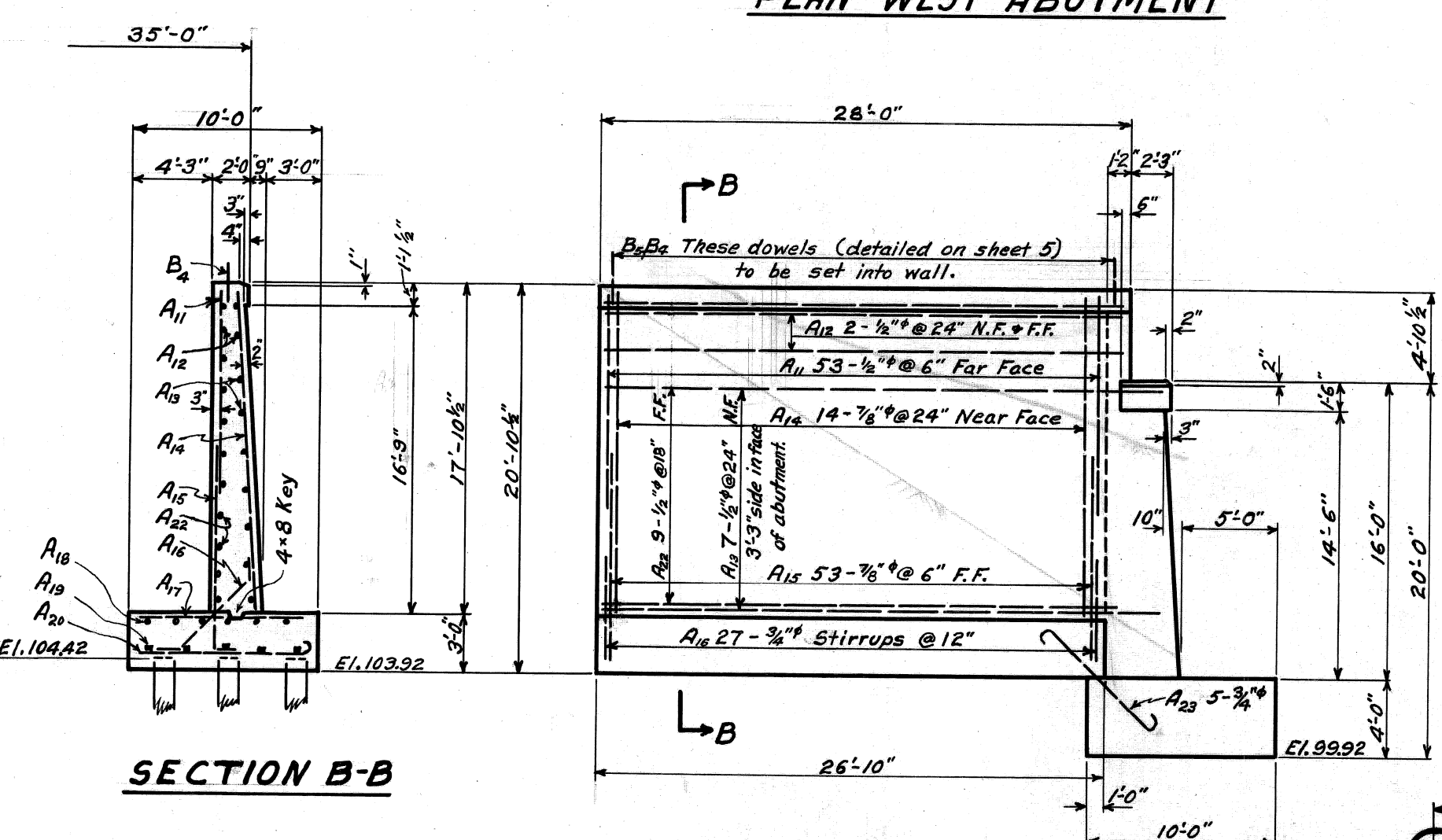
SCALE: 1/8" = 1'-0"
 DESIGNED BY - J.T.N.
 DRAWN BY - J.T.N.
 CHECKED BY - R.S.G./3/30
 May 7, 1930

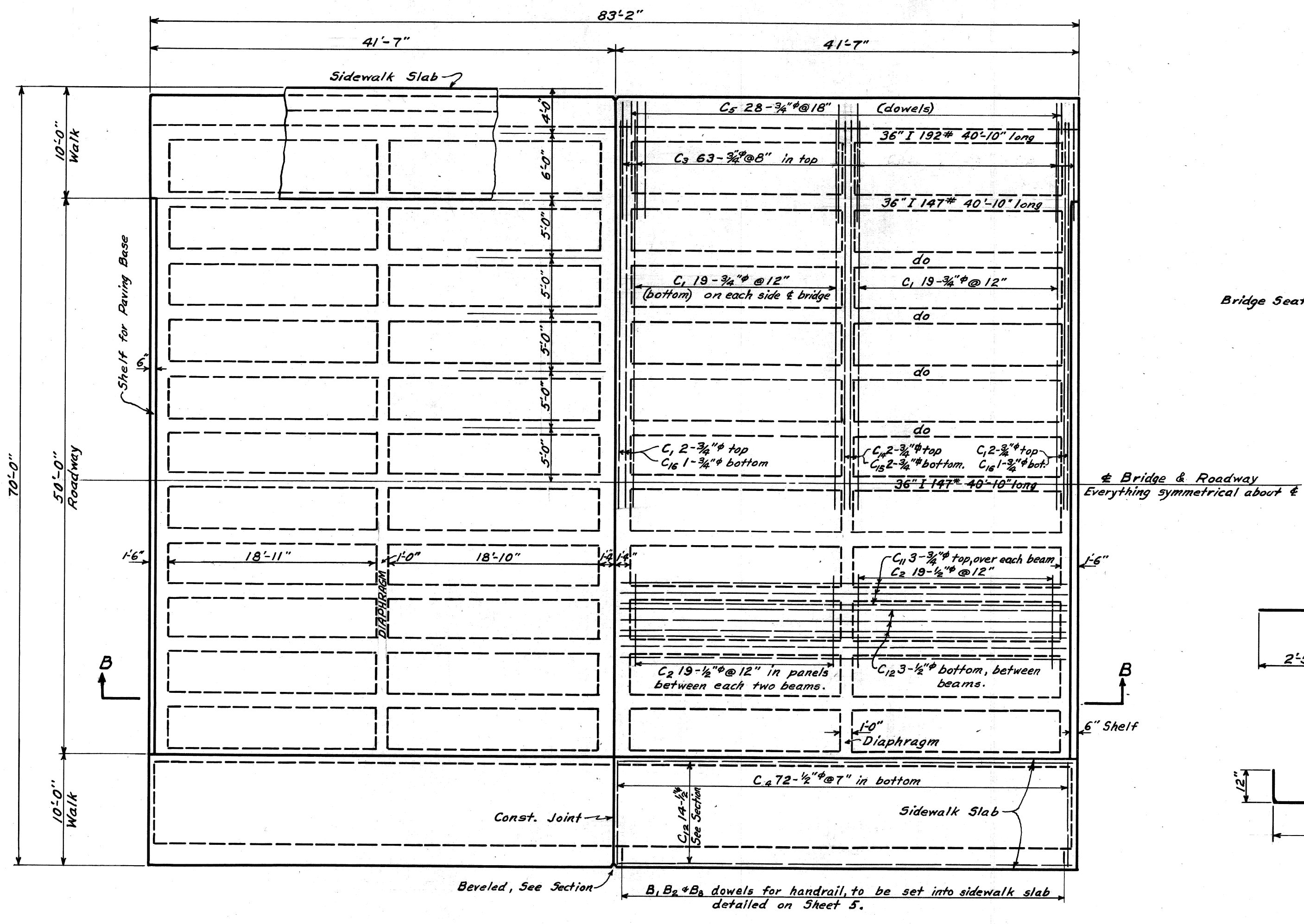
Sheet No. 3.

QUANTITIES
 Concrete: - Footings 206.2 cu. y.
 W. Abut. - 173.0 cu. y.
 E. Abut. - 173.0 cu. y.
 Pier. - 129.1 cu. y.
 478.3 cu. y.
 Above Footings 206.2 cu. y.
 206.2 cu. y.
 180.5 cu. y.
 592.9 cu. y.

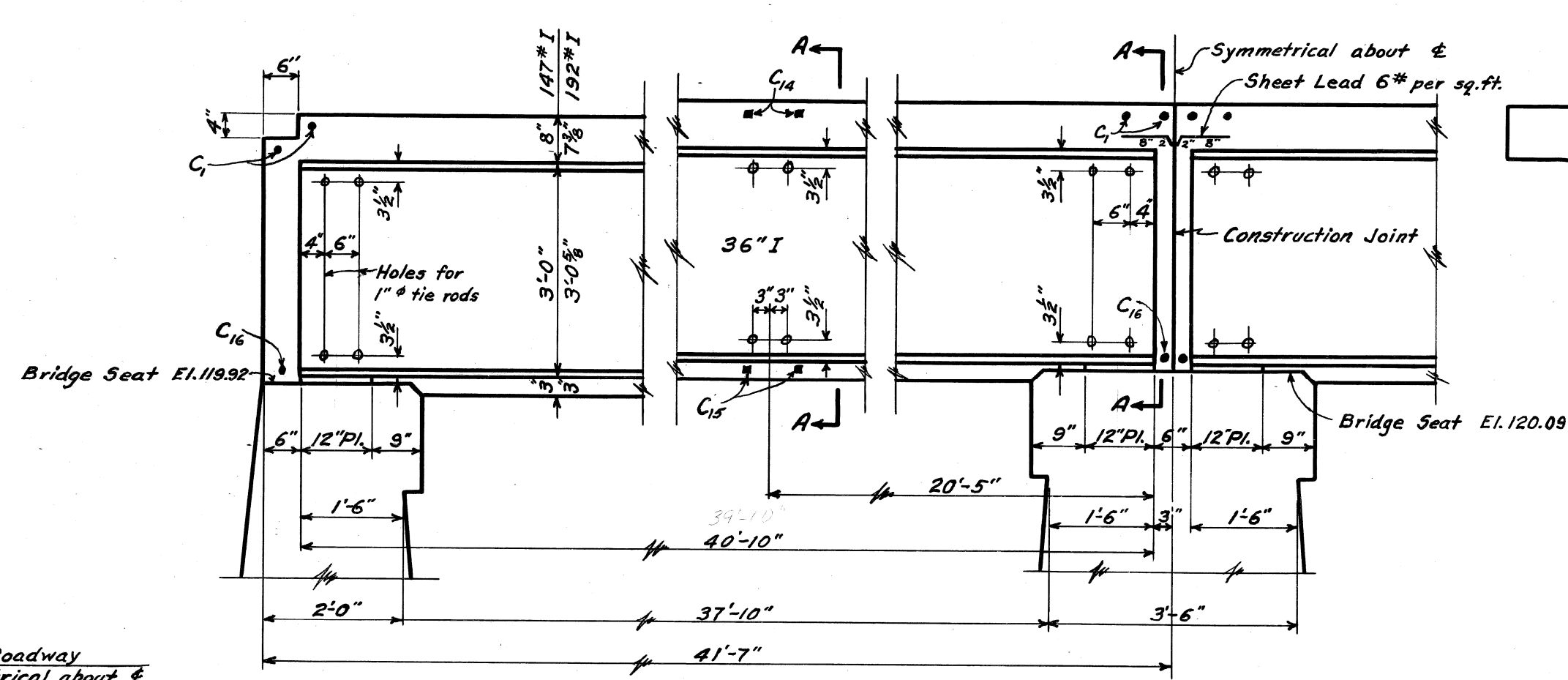
Reinforcing Steel: 48,000 #
 Rubbing Concrete: 6,500 sq. ft.

Approved: *Perry A. Fellows*
 City Engineer
Harold Knack
 Commissioner of Parks & Blvs.

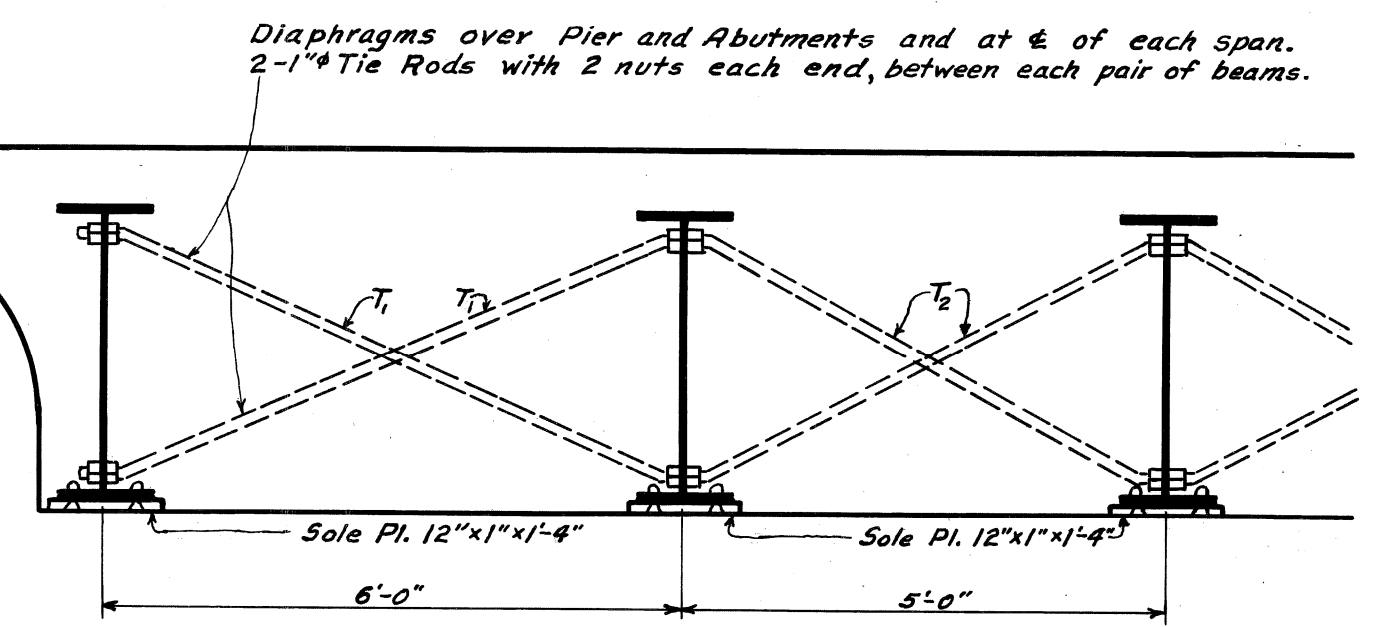




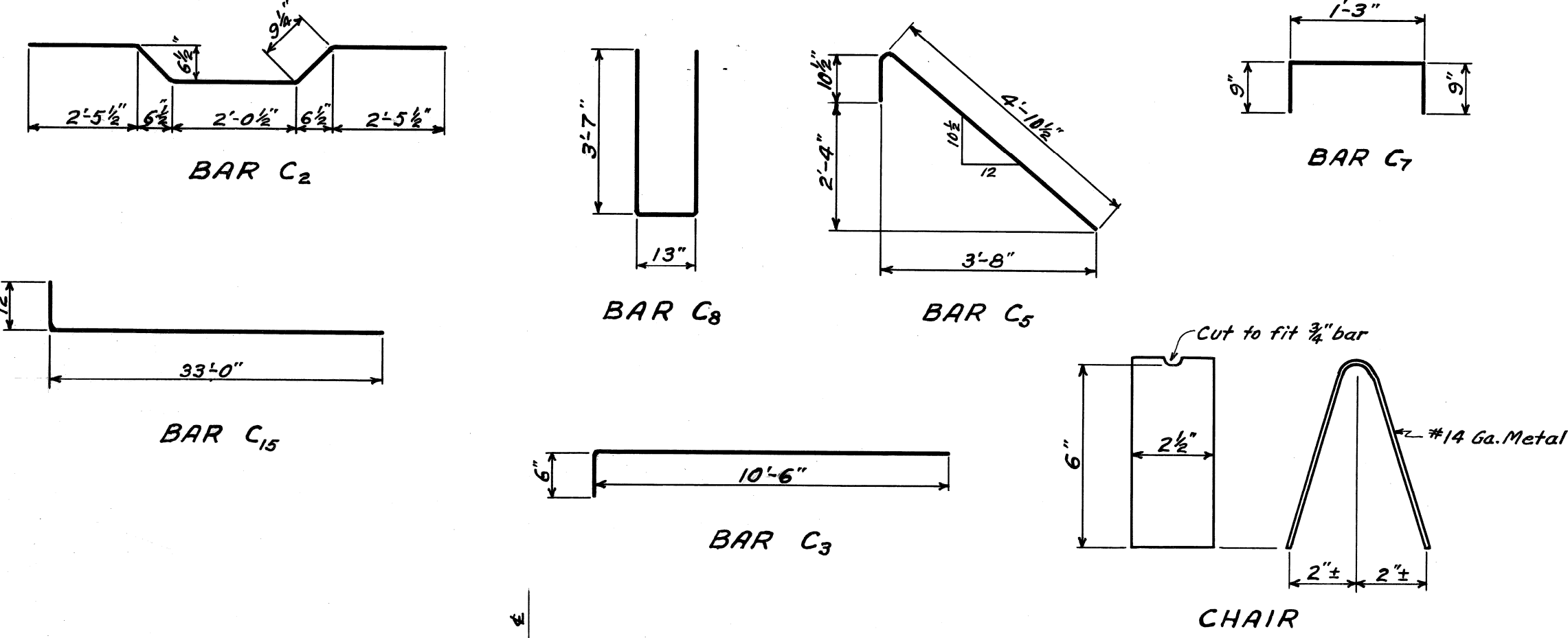
PLAN
Scale: 1/8"=1'-0"



PART SECTION B-B
Scale: 1/2"=1'-0"



SECTION A-A
Scale: 1/2"=1'-0"



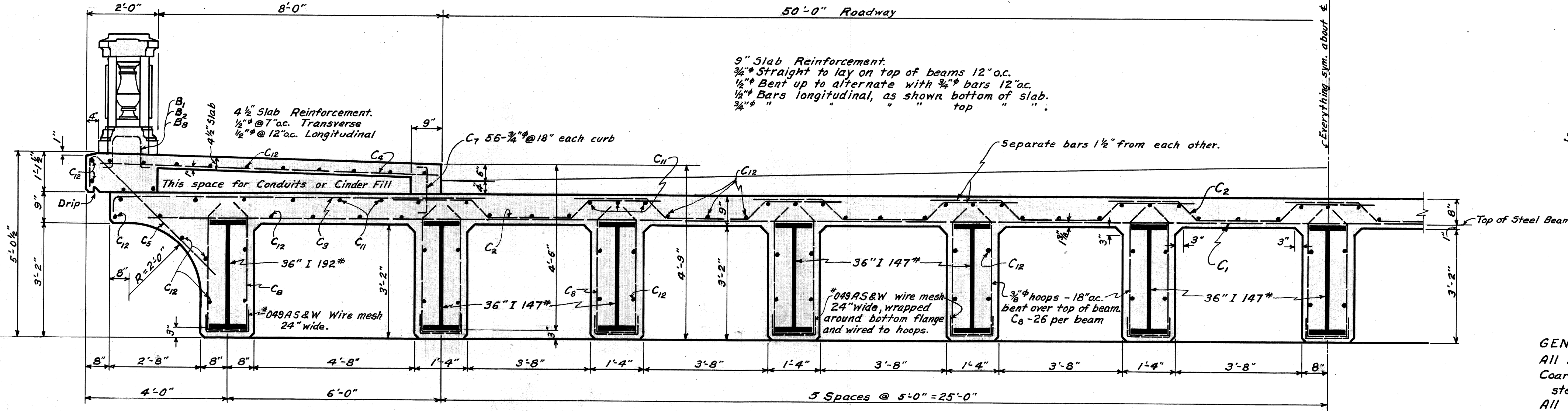
BAR SCHEDULE

Mark	Number	Size	Length	Remark	Location
9" Slab					
C1	152	3/4"	35'-0"	Straight	Bottom.
C2	760	1/2"	8'-6"	Bent	Bottom.
C3	252	3/4"	11'-0"	Hooked	Top.
C4	112	3/4"	5'-9"	"	Edge-dowel.
C11	86	3/4"	41'-0"	Straight	Top.
C12	84	1/2"	41'-0"	"	Bottom.

4 1/2" Slab					
C4	288	1/2"	9'-6"	Straight	Bottom.
C7	112	3/4"	2'-9"	Bent	Curb-dowel.
C12	56	1/2"	41'-0"	Straight	Bottom.

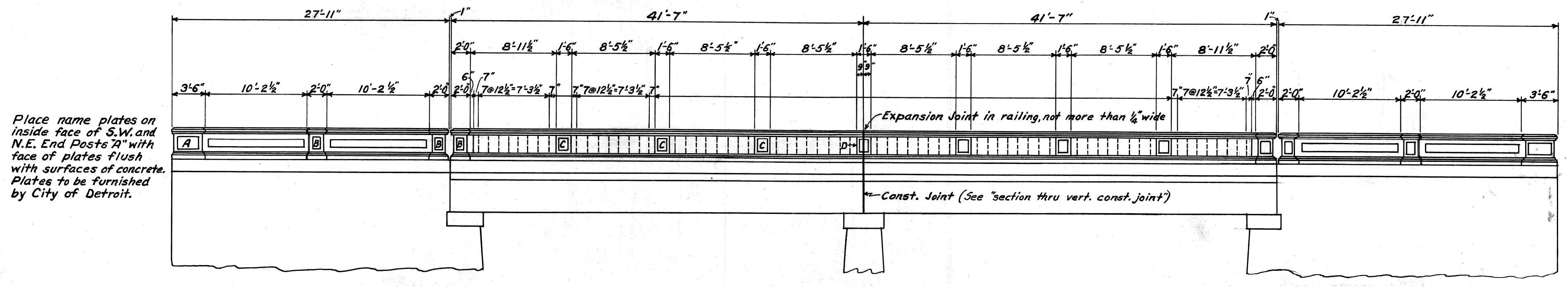
Beams					
C8	676	3/8"	8'-3"	Bent	Stirrups.
C12	108	1/2"	41'-0"	Straight	Longitudinal.
T1	24	1"	6'-10"	Bent	Diaphragm.
T2	120	1"	5'-11"	"	"
*049AS&W	975 LF	24" wide		Wire Mesh	(No allowance for waste or laps)
*14 mesh	400			Chair	See Detail.
C1	16	3/4"	35'-0"	Straight	Diaphragm.
C16	8	3/4"	33'-3"	"	"
C10	8	3/4"	35'-0"	"	"
C18	8	3/4"	34'-0"	Hooked	"

Hand Rail (Bent bars detailed on Sheet 5)					
B1	48	1/2"	8'-3"	Bent	Posts C&D and near Posts B on Bridge.
B2	12	1/2"	8'-9"	"	At end of bridge.
B3	128	1/2"	3'-6"	"	Spindles.
B4	112	1/2"	9'-0"	"	Panels of Approach.
B5	40	1/2"	9'-6"	"	Posts A and B of Approach.
B6	72	1/2"	13'-6"	Straight	Top and bottom of Approach.
B7	36	1/2"	41'-0"	"	" " " " Bridge.
B8	110	1/2"	2'-9"	Bent	Dowels in base on Bridge.



HALF SECTION OF DECK
Scale: 1/2"=1'-0"

GENERAL NOTES
All mix to be 1:2:3
Coarse aggregate, in concrete around bottom of steel beams 3/4", all other to be 1 1/2".
All exposed edges chamfered 1" unless shown otherwise.
All exposed surfaces of concrete to be rubbed as soon as forms are removed. No cement grout to be used on exposed surfaces. (use power grinder)
All reinforcing bars securely wired at intersections and at laps. Lap all bars 40 diameters.
Locate construction joints as shown. (See details for exposed vertical joints.)
Place all dowels for the hand railing in sidewalk slab as shown and called for on sheet No. 5.
Form lumber, for exposed surfaces, not less than 2" thick, dressed on 4 sides, and not over 8" wide.



ELEVATION OF HAND RAIL
Scale: 1/8"=1'-0"

Place name plates on inside face of S.W. and N.E. End Posts A with face of plates flush with surfaces of concrete. Plates to be furnished by City of Detroit.

Approved: *Perry A. Fellows*
City Engineer
Edw. Busch
Commissioner of Parks & Blvds.

CITY OF DETROIT
DEPARTMENT OF PARKS & BOULEVARDS
OFFICE OF CITY ENGINEER
BRIDGE OVER RIVER ROUGE
(SOUTH OF PLYMOUTH ROAD)
RIVER ROUGE PARK
DECK DETAILS
SCALE - AS SHOWN
DESIGNED BY - P.T.X.
DRAWN BY - P.T.X.
CHECKED BY - R.S. G-3-30
May 17, 1930
Sheet No. 4.

QUANTITIES
Concrete 3946 cu.yds.
Reinforcing Steel 42,500 lbs.
Structural Steel 83.14 tons
Precast Spindles 128.
Handrailing 278 lin.ft.
Rubbing Concrete 3000 sq.ft.