

QUANTITIES

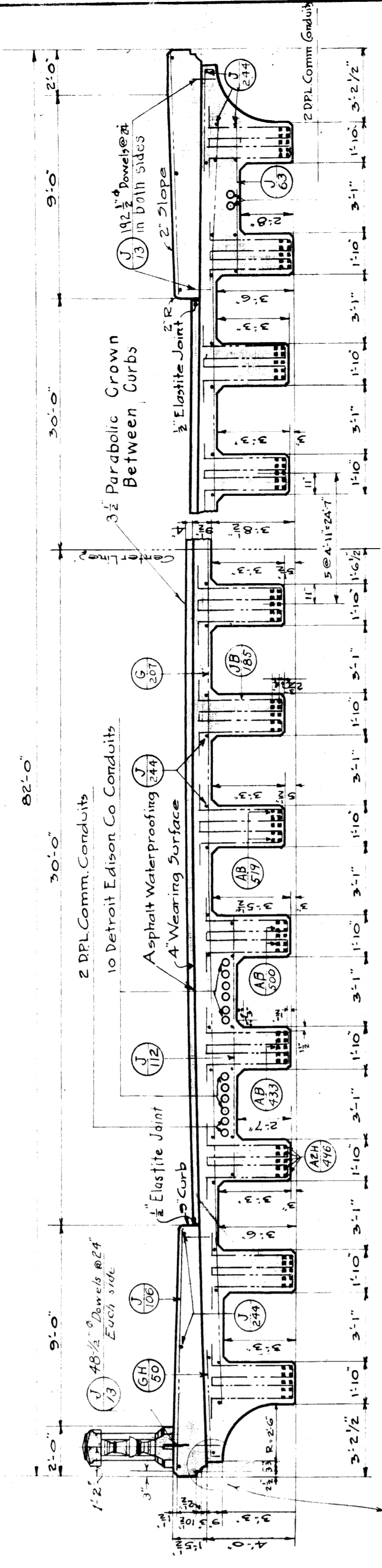
Reinforcing Steel without Conduits 12,830 Lbs
 Additional due to Detroit Edison 720
 DPL Comm 450
 Total Reinforcing Steel 123,000
 Concrete in beams, slab & sidewalks 72,555 cu yds
 Additional due to Detroit Edison 8.7
 DPL Comm 7.1
 Wearing Surface 630 cu yds
 Total Concrete 87,113

HANDRAIL QUANTITIES

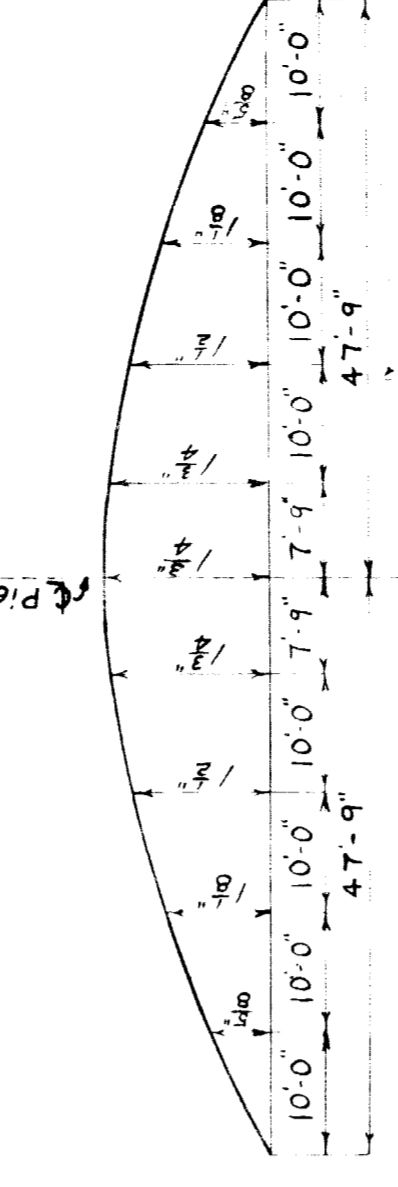
Precast Spindles 228
 Poured Concrete 20.7 cu yds
 Reinf. Steel 3070#

BAR LIST FOR HANDRAIL

Mark	No.	Size	Length	Location
JB79	32	3/4"	7'-3"	Post B & E
JB73	80	"	"	"
JB36	228	"	"	Spindles
JB21	144	"	"	2"-7" Dowels between Posts
JB40	90	"	"	24"-6" Deck & E. Wings
JB20	18	"	"	22"-0" W. Wings



CROSS SECTION
Scale 1/4" = 1'-0"



Camber Diagram

GENERAL NOTES

Board of Wayne County Road Commissioners for Bridge Specifications and supplementary specifications for bridge 881610

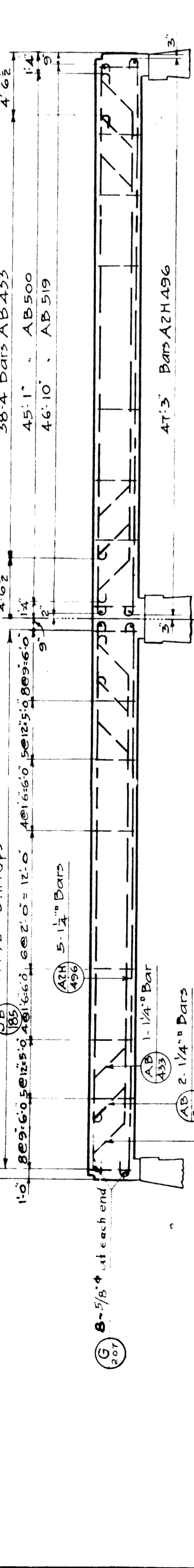
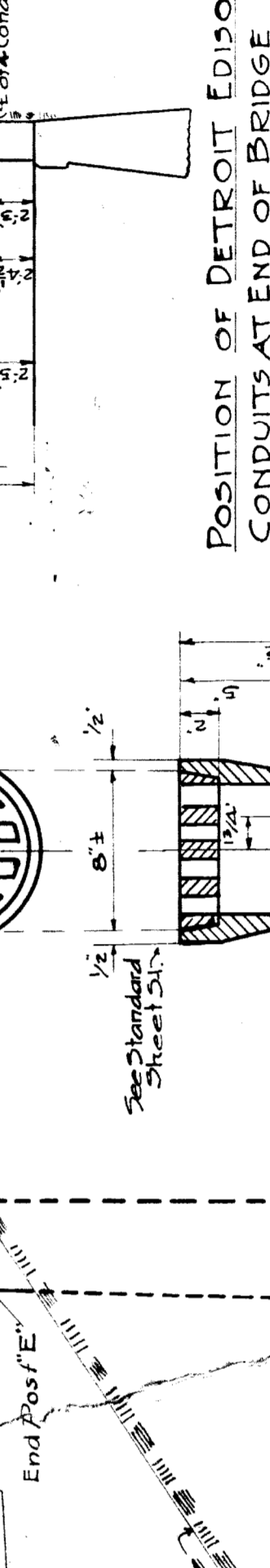
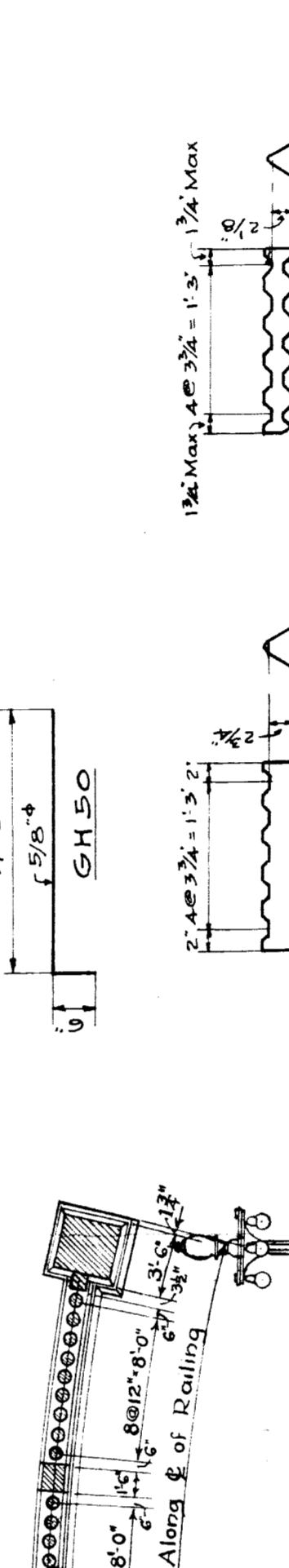
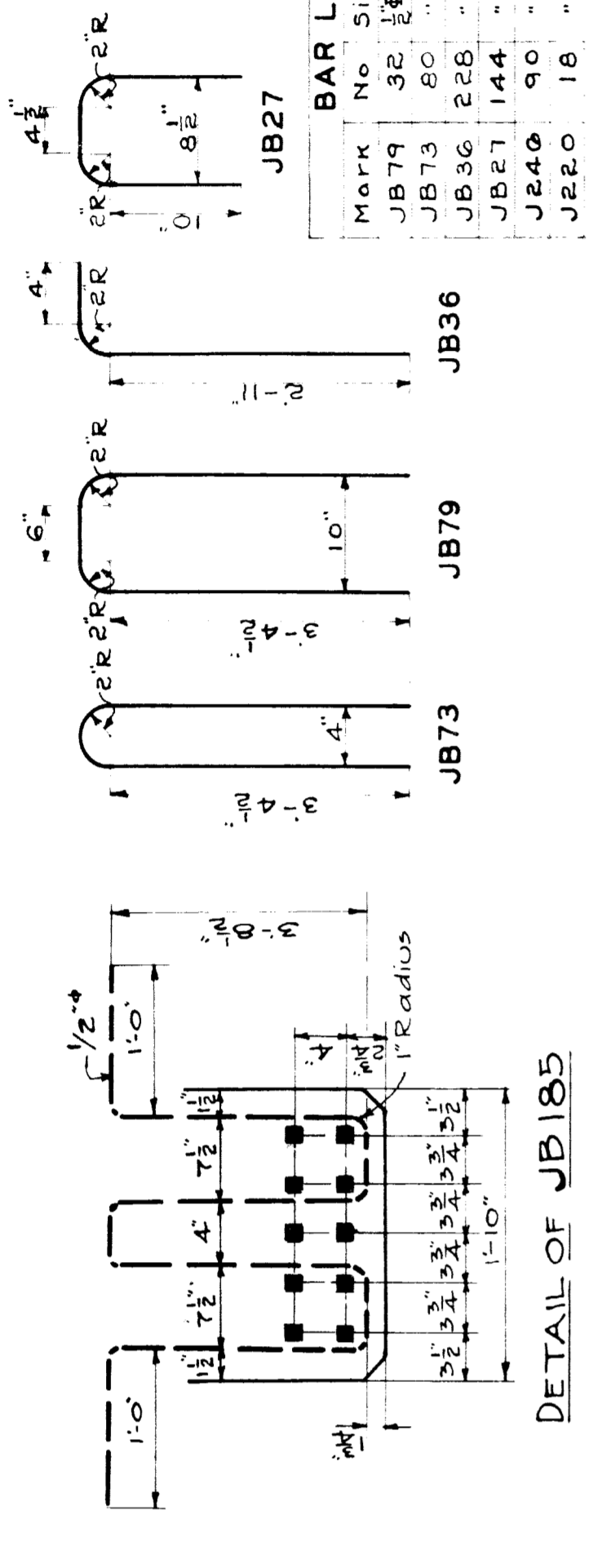
All concrete to be 1-2-4 mix, unless otherwise specified. Exposed surfaces to be rubbed as soon as forms are removed. No cement grout to be used at joints. Grout to be used at joints to be placed fully to the exact depth of the joint with the grout pressure greater than 1/2 when measured from the joint. No grout shall be placed in a continuous distance of 10' parallel to a joint.

Bars shall be securely wired together at each end of a bar and be securely wired together at all intermediate bars of structural grade and placed until bars to be attached are securely fastened in place. All bars to be securely tagged before shipment.

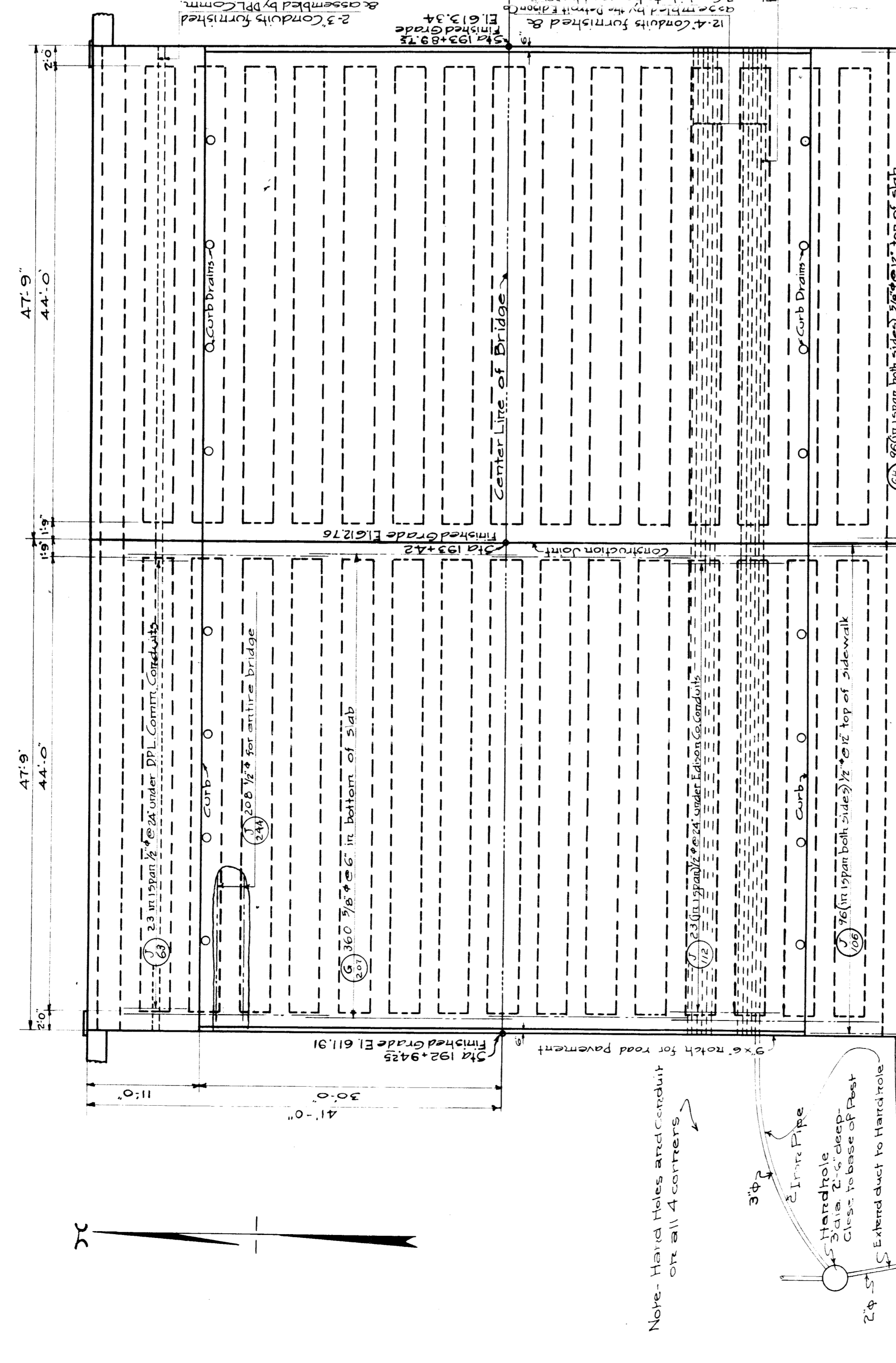
Construction joints shall be located as shown. Construction joints shall be approximately 1/2" thick of approved asphalt-paint Detroit Edison Co and DPL Commission conduits shall be furnished and installed in the forms by the Contractor from the receiving 48 hours before the Contractor.

BILL OF REINFORCING STEEL

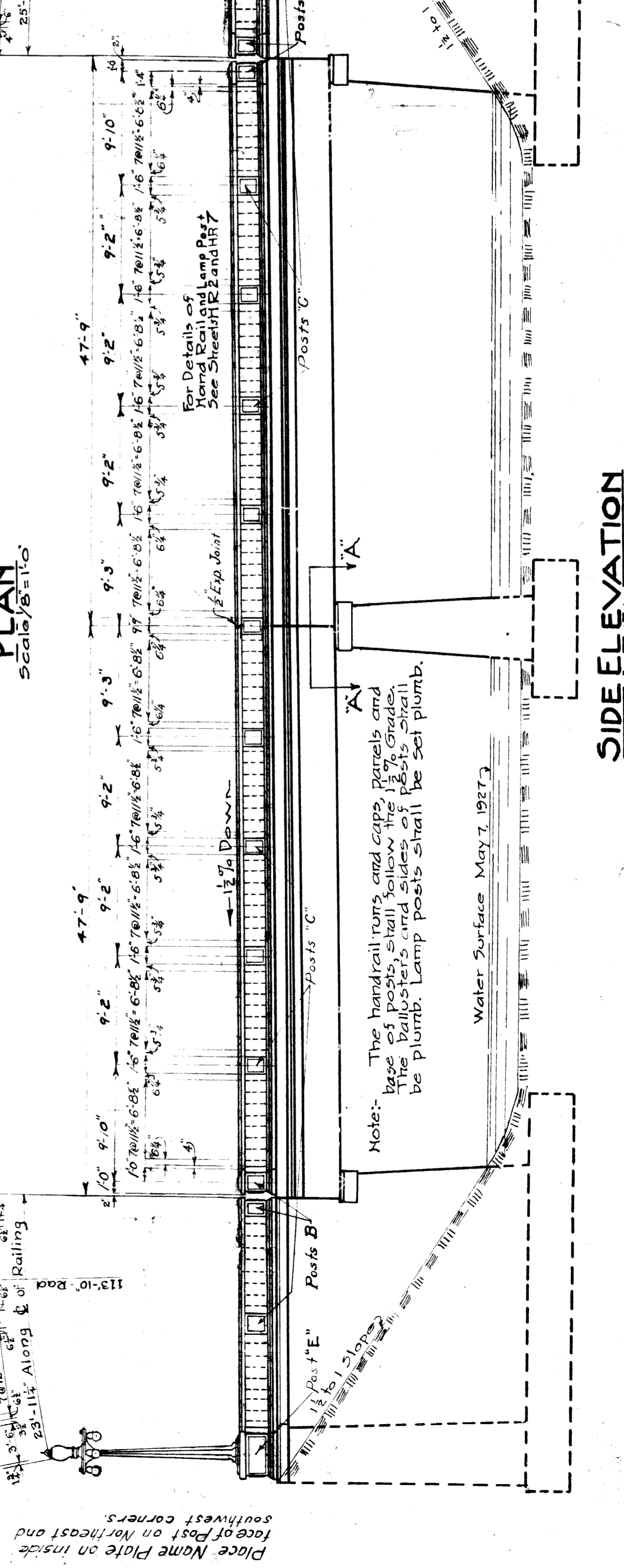
MARK	NO.	SIZE	LENGTH	REMARKS
AB496	60	1/2"	49'-6"	Beams
AB433	24	"	43'-3"	"
AB500	24	"	50'-0"	"
AB519	24	"	20'-7"	"
AB519	32	"	18'-5"	"
GH50	172	1/2"	10'-0"	100 steel chairs
J106	172	1/2"	10'-0"	Steel chairs
J234	208	"	24"	Steel chairs
V19	208	"	17'-2"	Steel chairs
J172	46	"	6'-3"	Under DPL Comm. N. Wing
J63	46	"	6'-3"	"



TYPICAL BEAM REINFORCEMENT
Scale 1/8" = 1'-0"



PLAN
Scale 1/8" = 1'-0"



SIDE ELEVATION
Scale 1/8" = 1'-0"

Note: The handrail posts and caps, panels and base posts shall follow the 1/4" grades. All be plumb. Lamp posts shall be set plumb.

Water Surface May 7, 1957

REVISIONS

NO.	DATE	DESCRIPTION
1	10/10/57	AS-EX
2	11/24/57	2/4
3	1/28/58	Rev
4	2/28/58	Rev
5	3/28/58	Rev
6	4/28/58	Rev

BOARD OF WAYNE COUNTY ROAD COMMISSIONERS
 DETROIT, MICH.
 EDWARD N. HINES, CHAIRMAN
 WILLIAM F. BUTLER, COMMISSIONER
 JOHN S. HAGGERTY, COMMISSIONER

SUPERSTRUCTURE
 OUTER DRIVE ROAD—MILE: 3.7
 BRIDGE 821610 OVER ROUGHER RIVER

DESIGNED BY FGS
 DRAWN BY FGS
 DATE 6-21-1957 SCALE AS NOTED CORRECTED BY J.M.C.
 APPROVED BY J.M.C. CHIEF DESIGNER
 APPROVED BY J.M.C. CHIEF DESIGNER
 APPROVED BY J.M.C. CHIEF DESIGNER