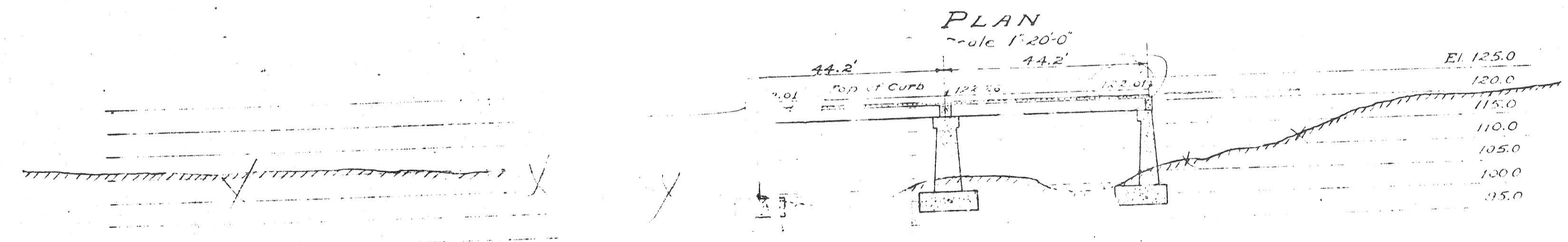


LOCATION PLAN  
Scale 1"=100'-0"



P:01 BR:10

LIST OF DRAWINGS

- Sheet #1 General Plan
- Sheet #2 Foundation & Piling Plan
- Sheet #3 Substructure Details
- Sheet #4 Deck Details
- Sheet #5 Handrailing Details
- Sheet #6 Footing Strut Details

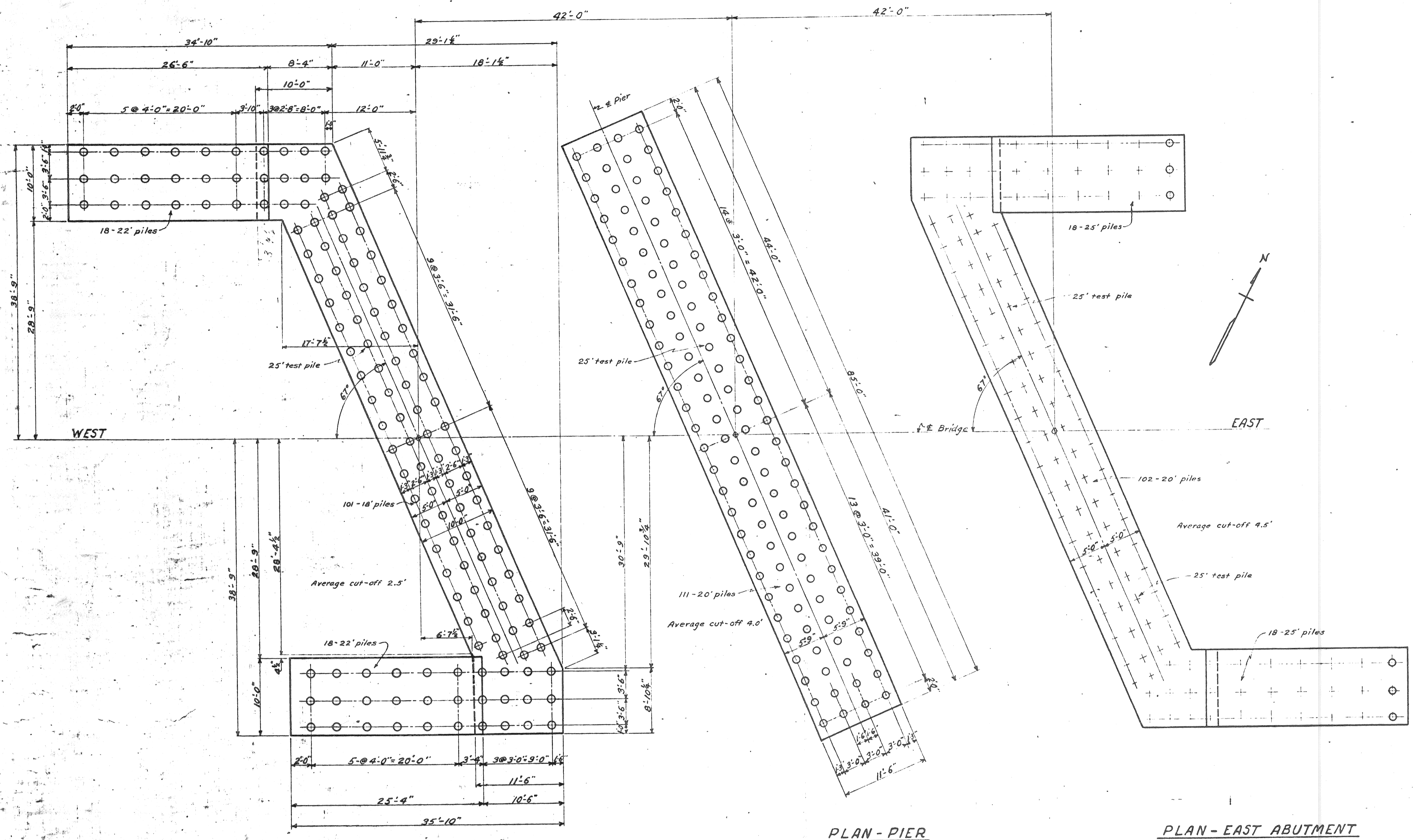
Approved: *Percy J. Fellows*  
City Engineer  
*W. B. Brock*  
Commissioner of Parks and Blvds.

CITY OF DETROIT  
DEPARTMENT OF PARKS & BOULEVARDS  
OFFICE OF CITY ENGINEER  
BRIDGE OVER RIVER ROUGE  
(SOUTH OF BONAPARTE AVE.)  
RIVER ROUGE PARK  
GENERAL PLAN  
SCALE: AS SHOWN  
DESIGNED BY:  
DRAWN BY: E.S.M.  
CHECKED BY: X.S.  
AUG. 10, 1929  
Sheet No. 1

EXISTING

57.75

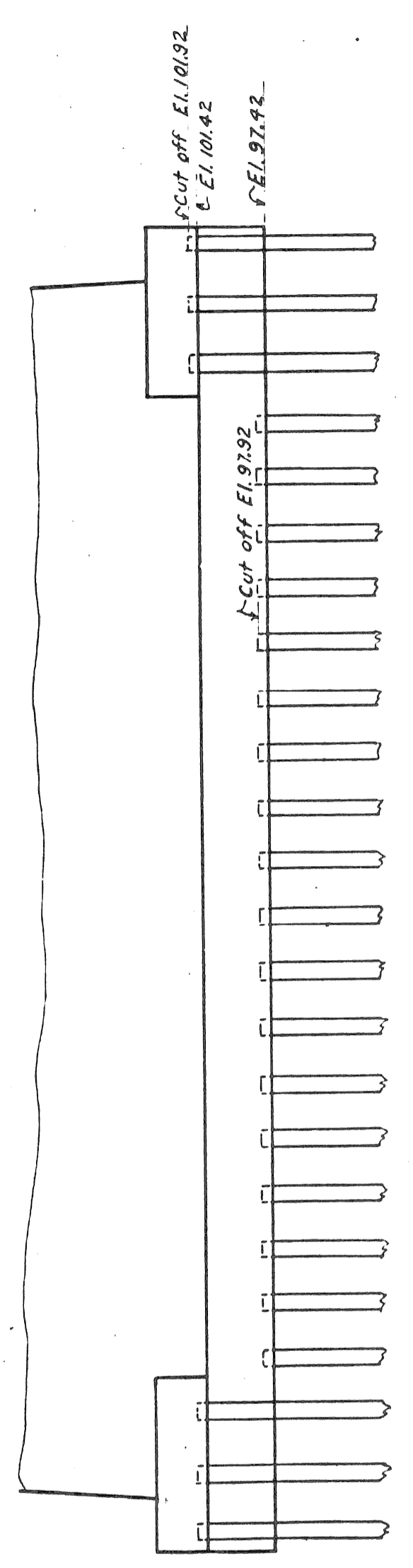
57



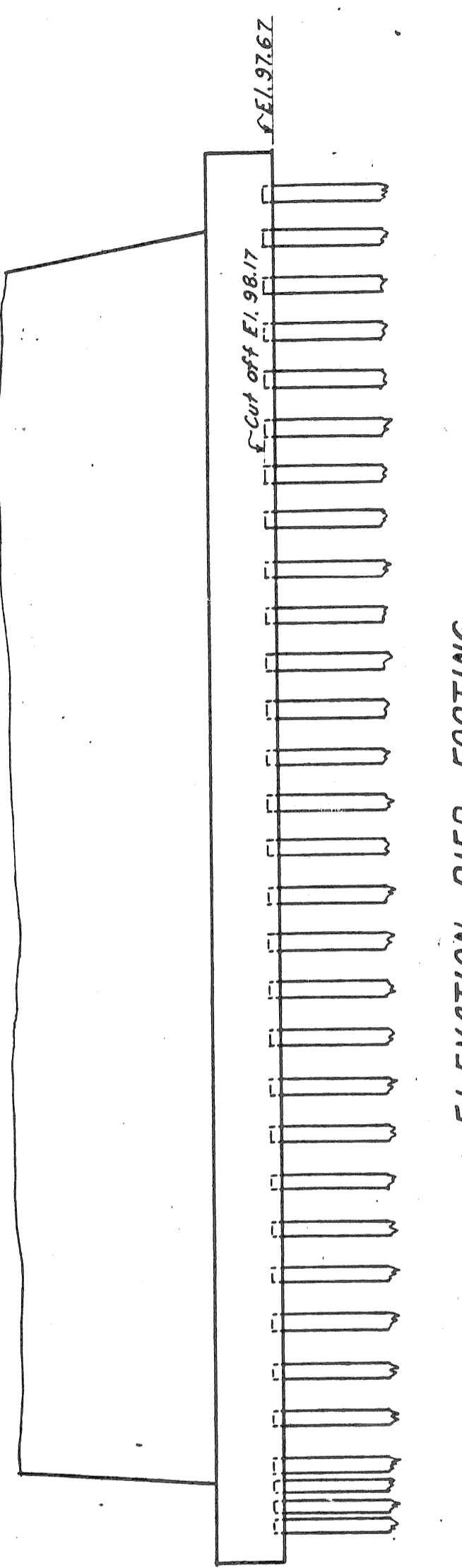
PLAN - WEST ABUTMENT

PLAN - PIER

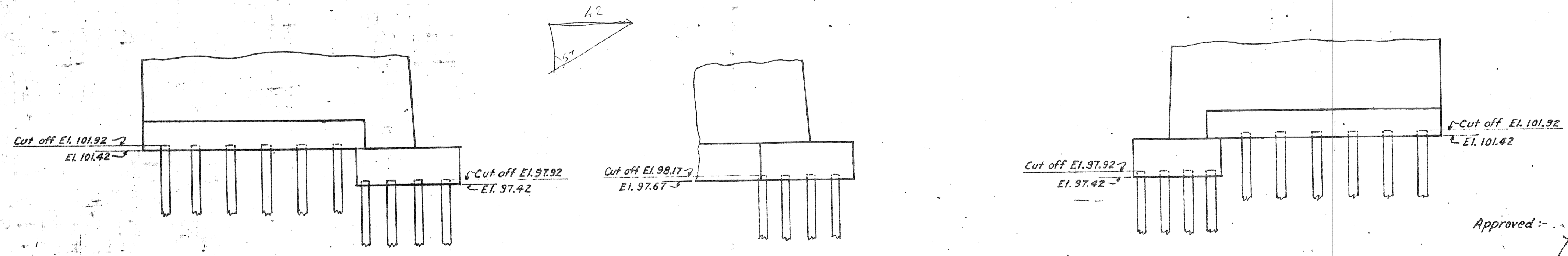
PLAN - EAST ABUTMENT  
Same as West Abutment



ELEVATION ABUTMENT FOOTING



ELEVATION PIER FOOTING



FIELD NOTE  
Piles drove easily for first 8 feet.  
Each additional foot drove harder  
until they stopped at a depth of  
approximately 16 feet.  
Pile notes on plan are those taken  
from field.

GENERAL NOTES  
Total number of piles - 384.  
All piles driven with a steam hammer.  
Length of piles to be determined by test piles,  
which shall develop a bearing capacity of 20  
tons each, according to the following formula:  
$$P = \frac{2wh}{s+0.1}$$
  
P = safe bearing capacity in pounds.  
w = weight of steam hammer in pounds.  
h = drop of hammer in feet.  
s = average penetration per blow in inches  
under last blows.  
All piles to be cut off at elevation shown.  
Allow 3 feet for cut off.

Approved: *Perris A. Fellows*  
City Engineer  
*Herb Rusk*  
Commissioner of Parks & Blvds

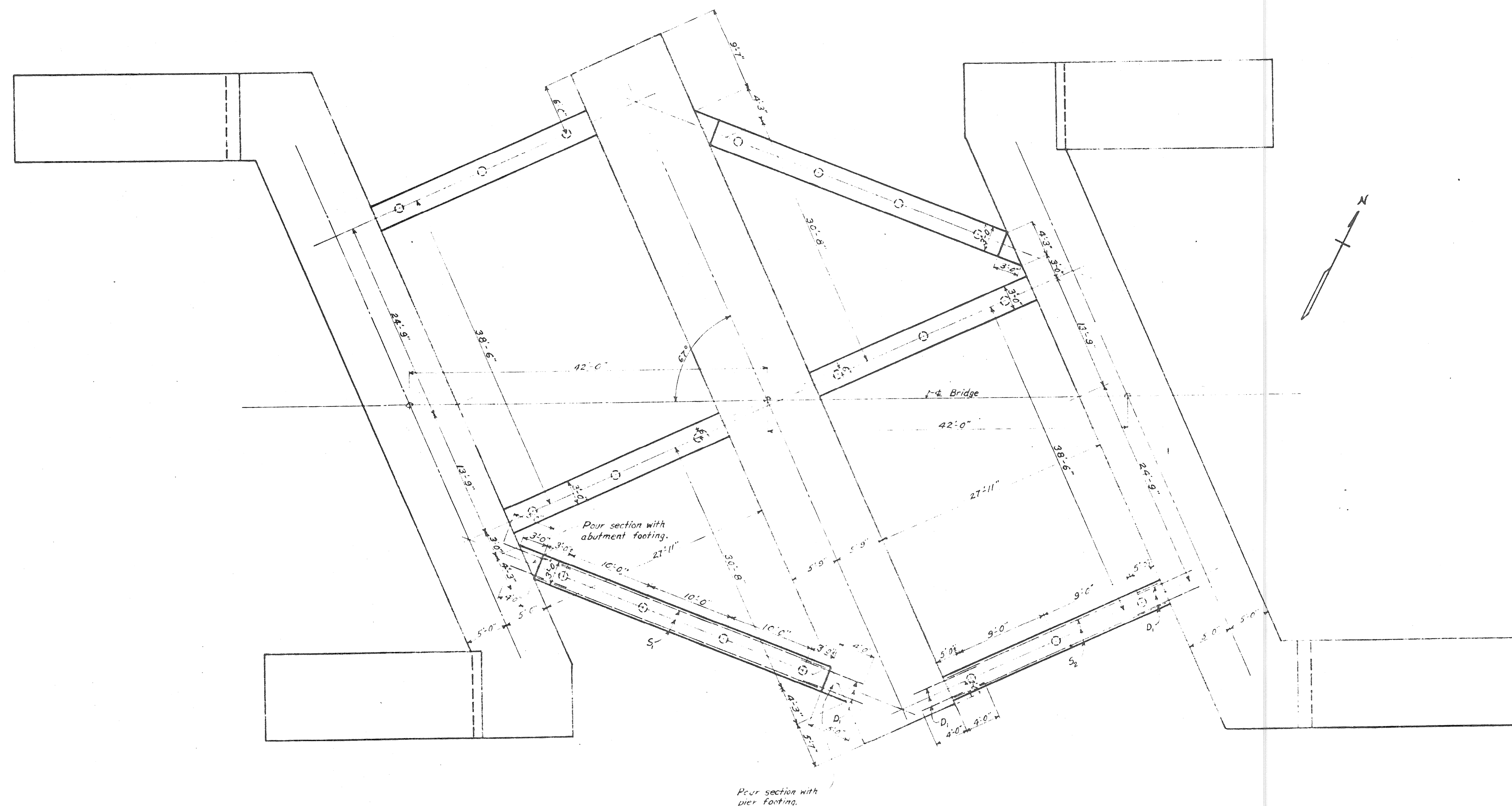
CITY OF DETROIT  
DEPARTMENT OF PARKS & BOULEVARDS  
OFFICE OF CITY ENGINEER  
BRIDGE OVER RIVER ROUGE  
(SOUTH OF BONAPARTE AVE)  
RIVER ROUGE PARK  
FOUNDATION & PILING PLAN  
SCALE: 1/8"=1'-0" AUG. 10, 1928  
DESIGNED BY: J.T.H.  
DRAWN BY: J.T.H.  
CHECKED BY: K.S.  
Sheet No. 2

Notes added 2-3-30.

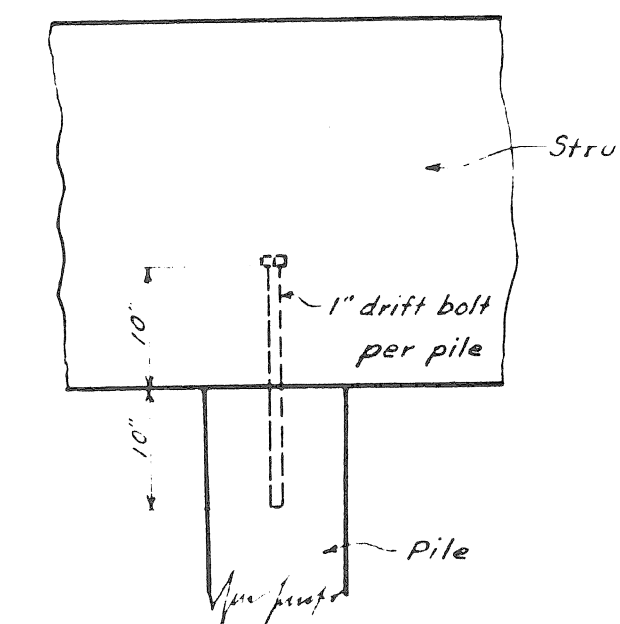




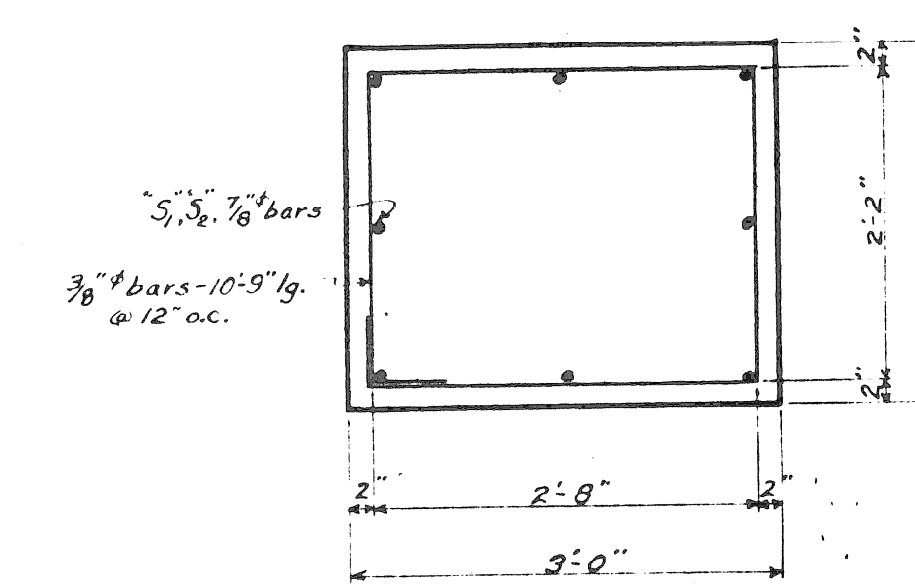




**PLAN**  
Scale: 1/8" = 1'-0"



**PILE CONNECTION**  
Scale: 3/4" = 1'-0"

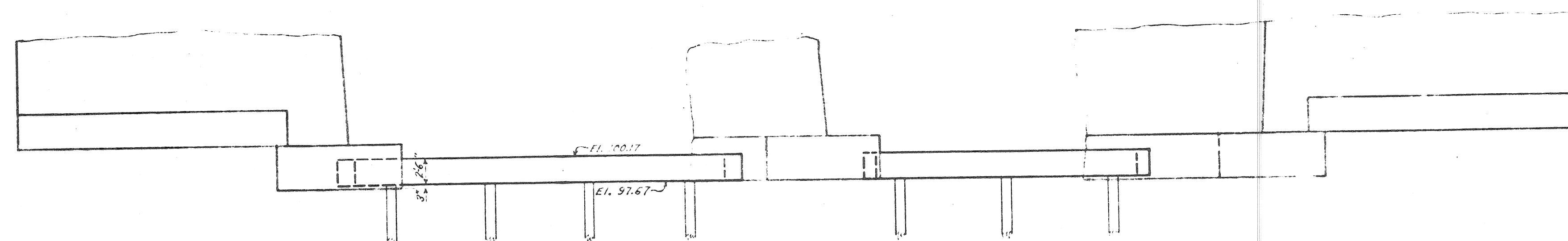


**STRUT CROSS-SECTION**  
Scale: 3/4" = 1'-0"

- BAR LIST**
- S<sub>1</sub> 16 - 7/8" bars @ 35'-9" lg. - lengthwise.
  - S<sub>2</sub> 32 - 7/8" bars @ 27'-9" lg. - lengthwise.
  - D<sub>1</sub> 95 - 7/8" bars @ 6'-0" lg. - dowels.
  - 184 - 3/8" bars @ 10'-9" lg. - ties.

**QUANTITIES**

Reinf. Steel	-	5350 lbs.
Concrete	-	52.7 cu.yds.
Piles	-	20
Drift Bolts	-	20 - 1" x 20" lg. (with sq. head)



**CITY OF DETROIT**  
DEPARTMENT OF PARKS & BOULEVARDS  
OFFICE OF CITY ENGINEER  
**BRIDGE OVER RIVER ROUGE**  
(SOUTH OF BONAPARTE AVE.)  
RIVER ROUGE PARK  
**FOOTING STRUT DETAILS**  
SCALE: AS SHOWN  
DESIGNED BY: [Signature]  
DRAWN BY: [Signature]  
CHECKED BY: [Signature]  
OCT. 7, 1929  
Sheet No 6