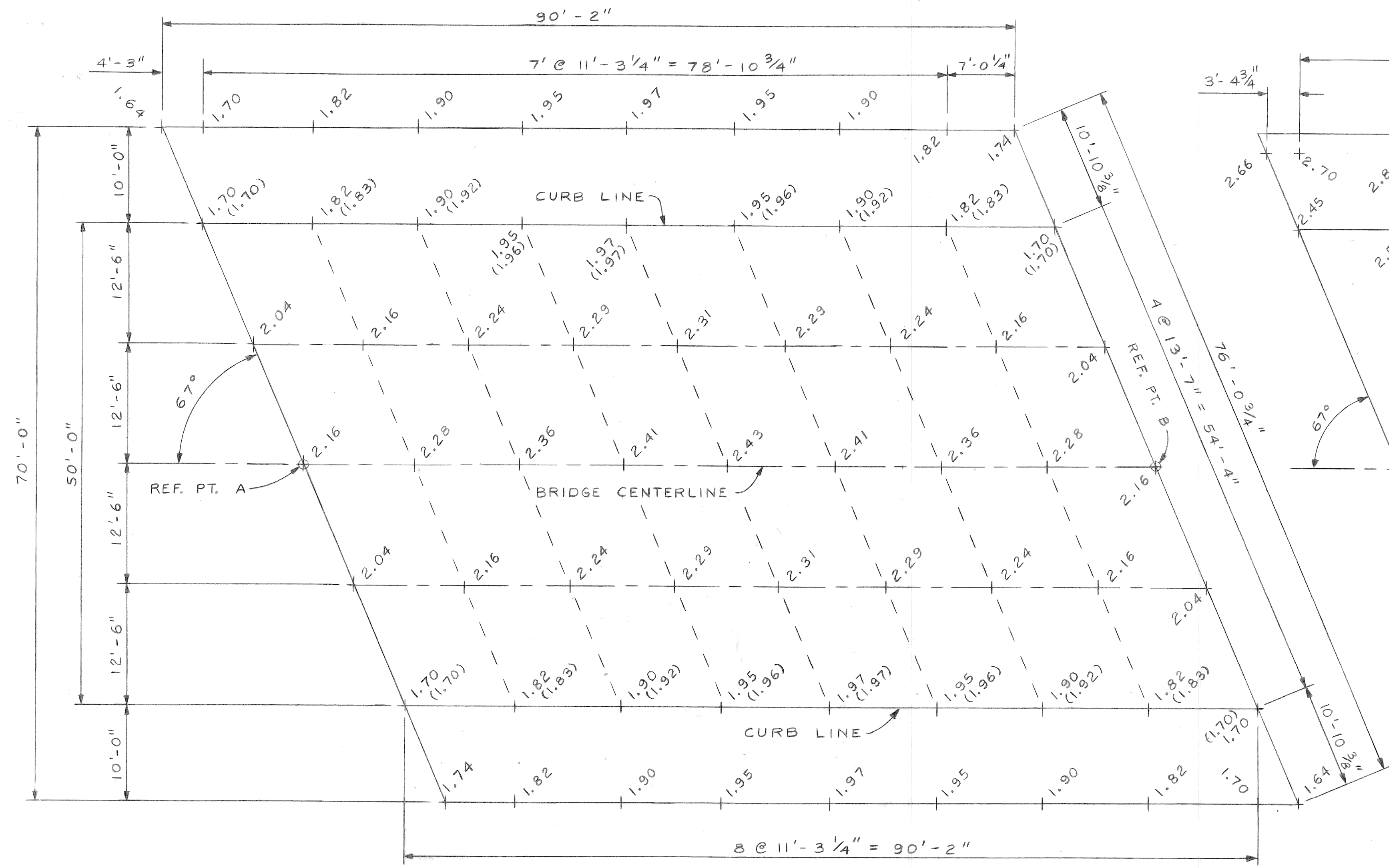
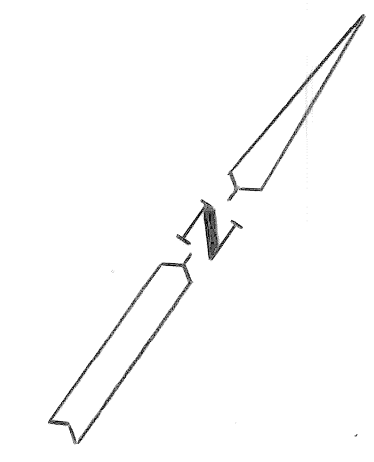
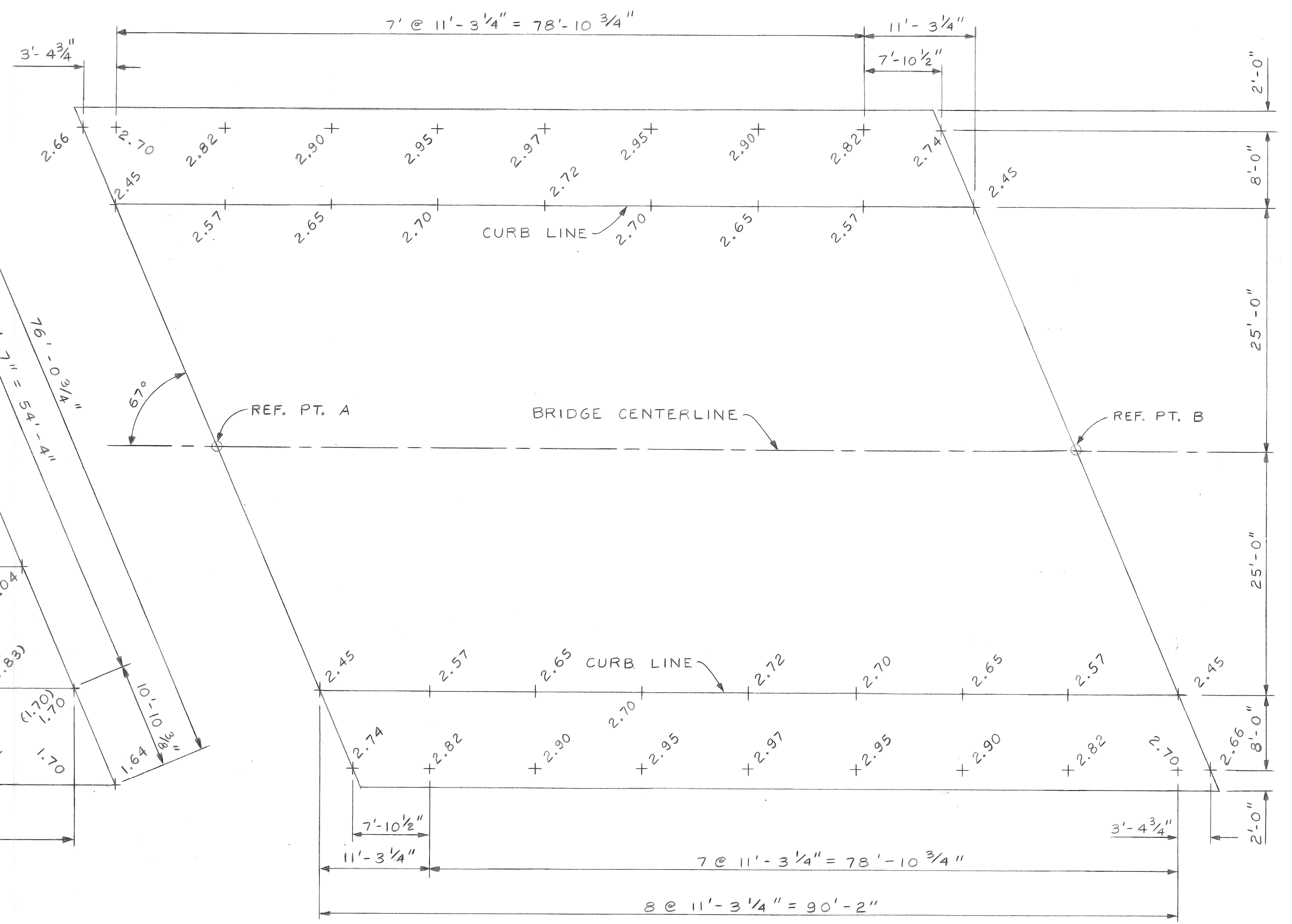


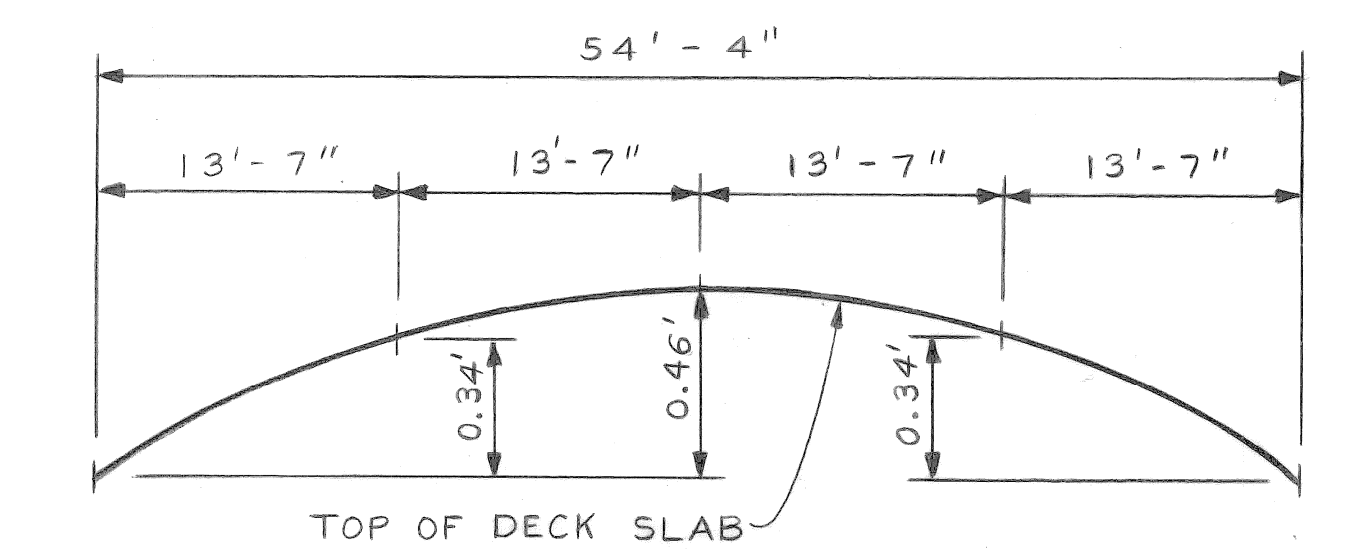
ADD 120.00 FT. TO ELEVATIONS SHOWN.



PROPOSED TOP OF DECK SLAB ELEVATIONS  
SCALE: 1/8" = 1'-0"



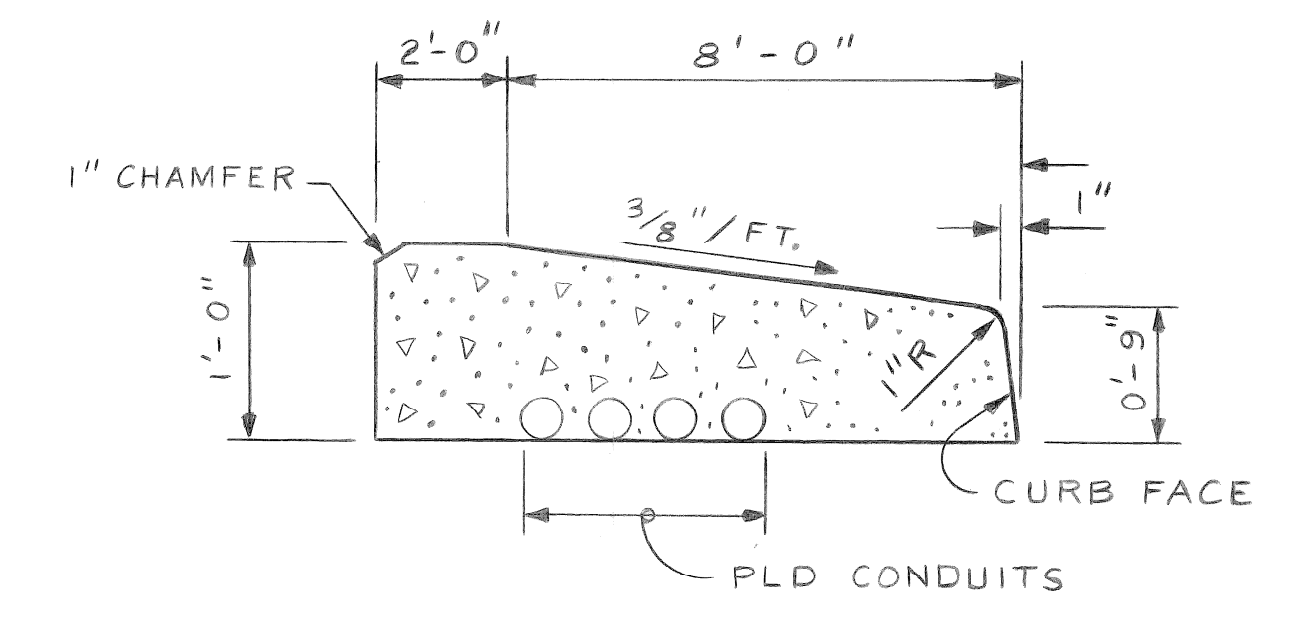
PROPOSED SIDEWALK ELEVATIONS  
SCALE: 1/8" = 1'-0"



TYPICAL SECTION FOR TOP OF DECK SLAB  
BETWEEN CURB LINES AT 67° DIAGONAL  
NO SCALE

NOTES

- ALL ELEVATIONS ARE BASED ON CITY OF DETROIT DATUM.
- FOR SURVEY BENCH MARK LOCATIONS & ELEVATIONS SEE SHEET NO. 5-21.
- SIDEWALK POUR SHALL NOT BE CAST UNTIL SLAB CONCRETE HAS ATTAINED AT LEAST 75% OF ITS DESIGN STRENGTH.
- SLAB & SIDEWALK ELEVATIONS ARE BASED ON THE CONDITION THAT ALL CONCRETE BEAMS HAVE ERECTED, BUT NO OTHER LOADS ARE APPLIED. THESE ELEVATIONS INCLUDE ALLOWANCES FOR DEFLECTION DUE TO FORMS, STEEL REINFORCEMENT, DECK CONCRETE AND BARRIERS.
- SCREED RAILS FOR FINISHING CONCRETE SHALL BE LOCATED OVER FASCIA BEAMS.
- SCREED ELEVATIONS ARE SHOWN IN PARENTHESIS THUS ( ).
- TRANSVERSE SIDEWALK CONTRACTION JOINTS ARE TO BE AT 8-FT. INTERVALS OR AS DIRECTED BY THE ENGINEER.



TYPICAL SIDEWALK SECTION  
NO SCALE

Job No. : 36917A

DESCRIPTION	DR	N	CK	D	AP	VD	DATE	FINAL	CHECK	REVIEW
REVISIONS										

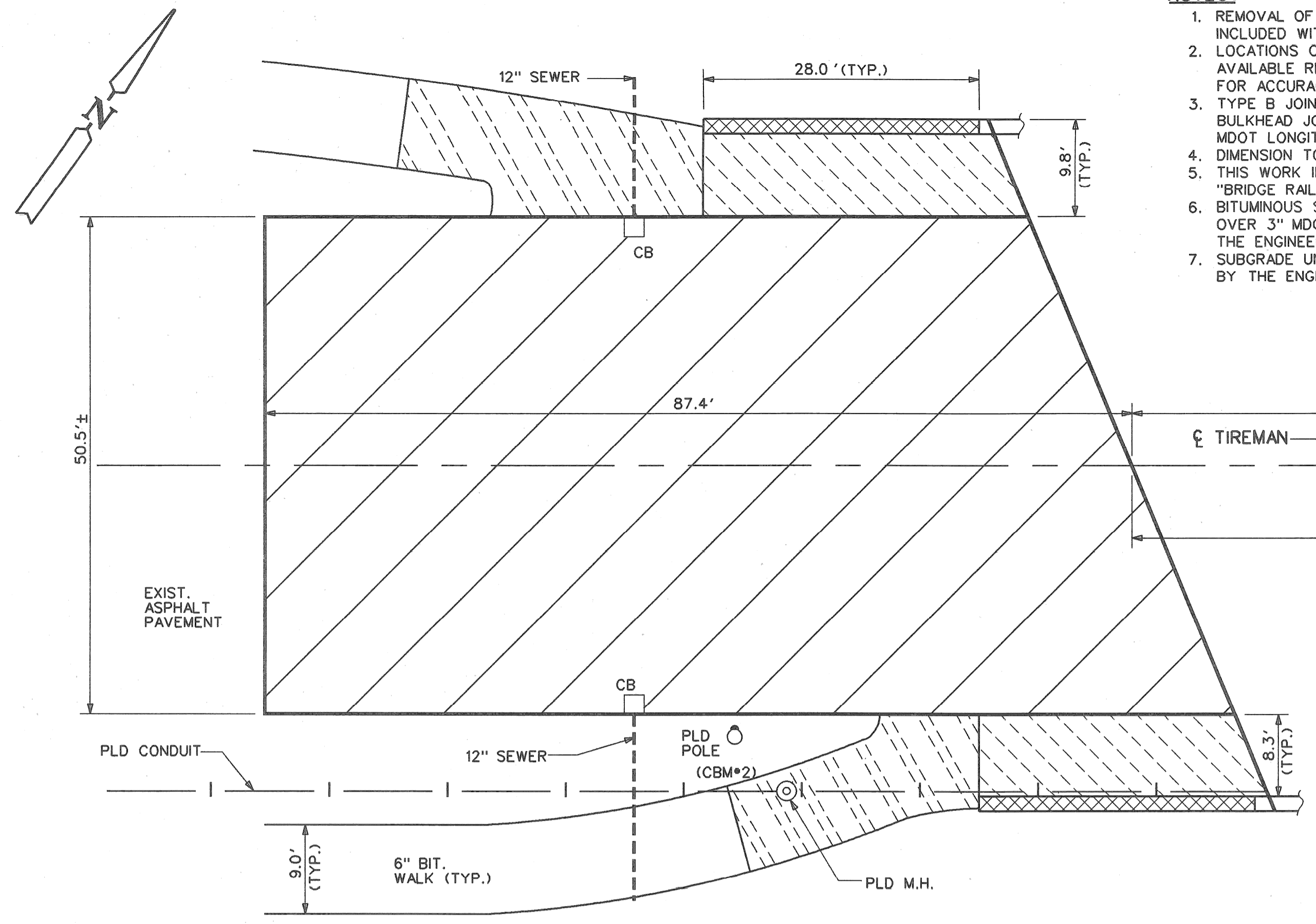
BY: N.W.  
CHECKED BY: N.W.  
APPROVED: *E. J. Howard*  
ENGINEER OF STREETS

CITY OF DETROIT  
CITY ENGINEERING DIVISION D.P.W.  
BUREAU OF STREETS AND HIGHWAYS

TIREMAN AVE. BRIDGE OVER ROUGE RIVER (BW-265)  
PROPOSED DECK SLAB AND SIDEWALK ELEVATIONS

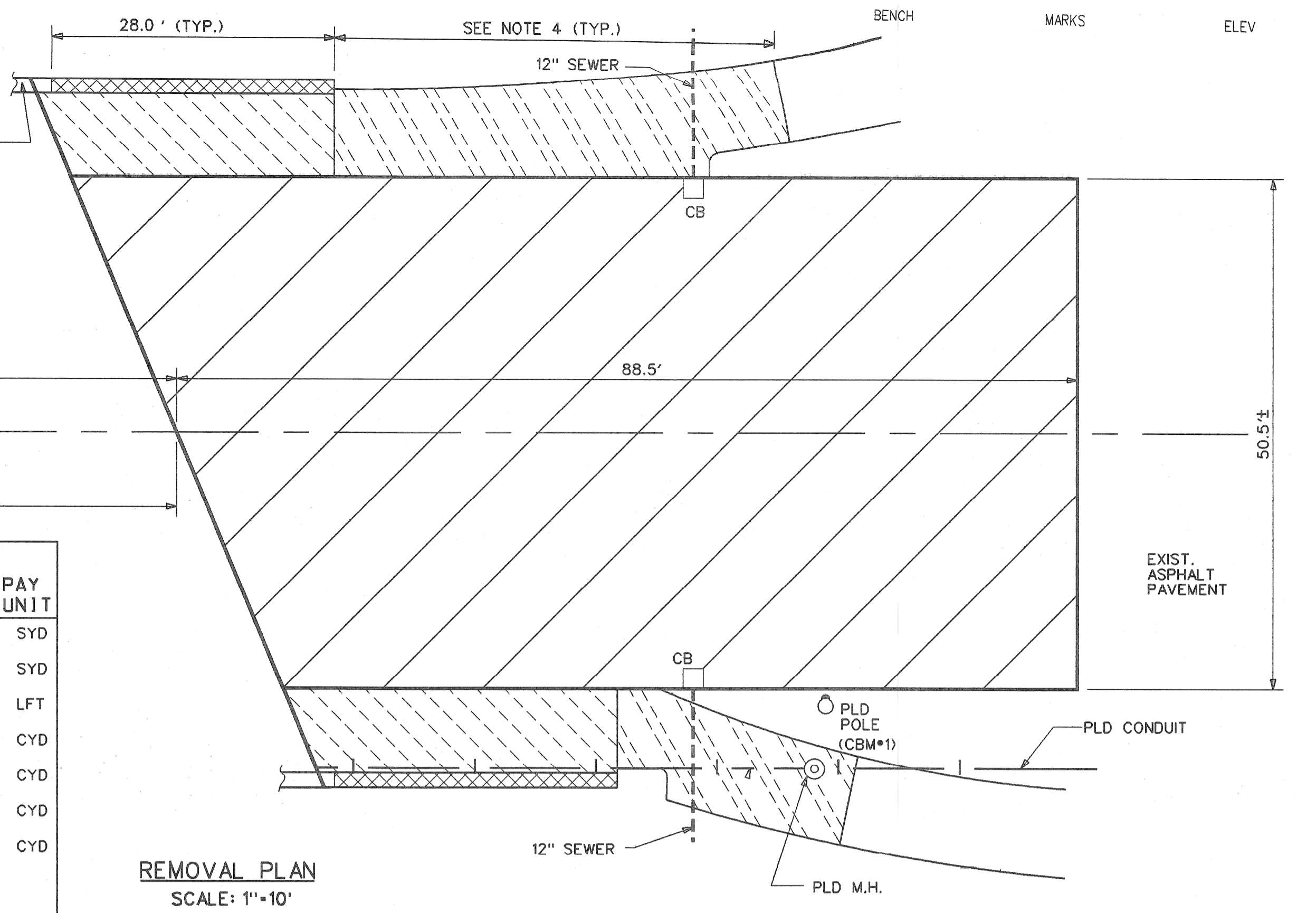
SHEET 5-31 OF SHEETS  
CONTRACT NO.  
ASSIGNMENT NO. 93-22-17  
DATE MAR., 1937

- NOTES:**
1. REMOVAL OF BITUMINOUS SIDEWALK SHALL BE INCLUDED WITH EARTH EXCAVATION.
  2. LOCATIONS OF PLD CONDUIT ARE BASED UPON AVAILABLE RECORDS AND ARE NOT GUARANTEED FOR ACCURACY.
  3. TYPE B JOINT DENOTES AN MDOT LONGITUDINAL BULKHEAD JOINT; TYPE D JOINT DENOTES AN MDOT LONGITUDINAL LANE TIE JOINT.
  4. DIMENSION TO BE DETERMINED IN THE FIELD.
  5. THIS WORK INCLUDED IN PAY ITEM: "BRIDGE RAILING, SOLID PARAPET TYPE".
  6. BITUMINOUS SIDEWALK TO BE 1" MDOT BIT. MIX 36A OVER 3" MDOT BIT. MIX 3C OR AS APPROVED BY THE ENGINEER.
  7. SUBGRADE UNDERCUTTING SHALL BE AS DIRECTED BY THE ENGINEER.



**PAY QUANTITIES**

ITEM	QUANTITY	PAY UNIT
REMOVING PAVEMENT	1,015	SYD
REMOVING SIDEWALK	100	SYD
REMOVING CONCRETE PARAPET	112	LFT
EARTH EXCAVATION	25	CYD
EMBANKMENT (LM)	30	CYD
SUBGRADE UNDERCUTTING, TYPE II	10	CYD
GRANULAR MATERIAL CLASS II	35	CYD
REMOVING BITUMINOUS SURFACE (see sheet no. s-93)	196	SYD

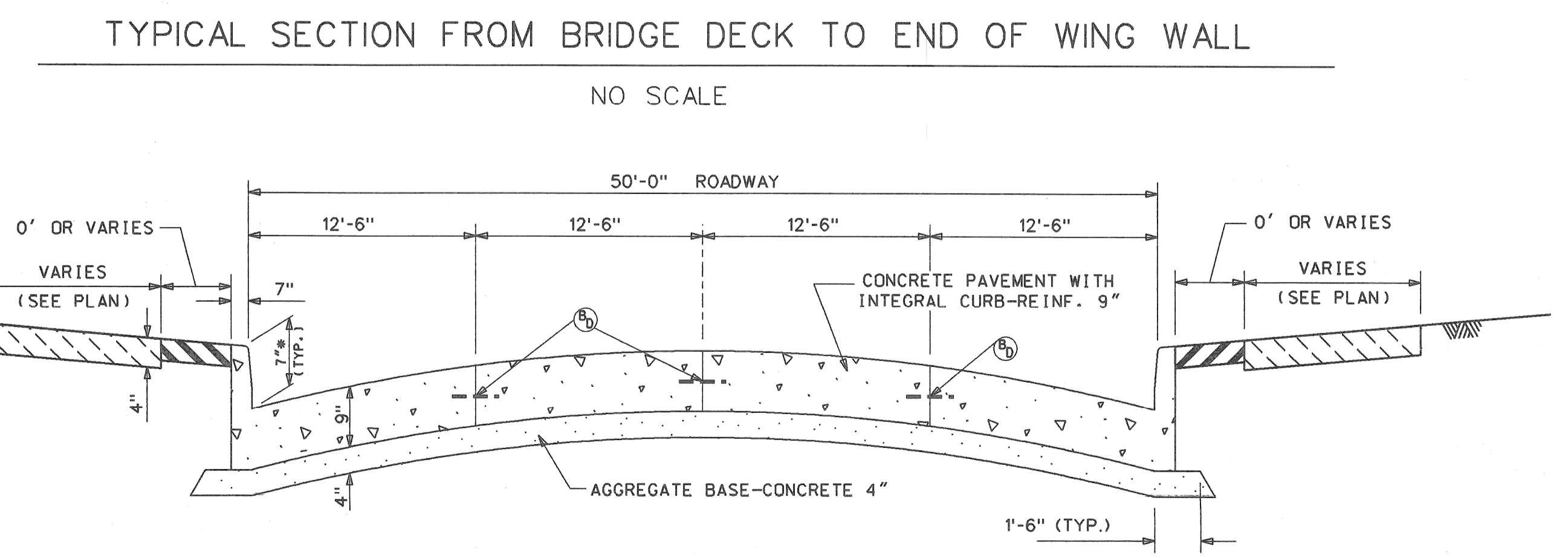
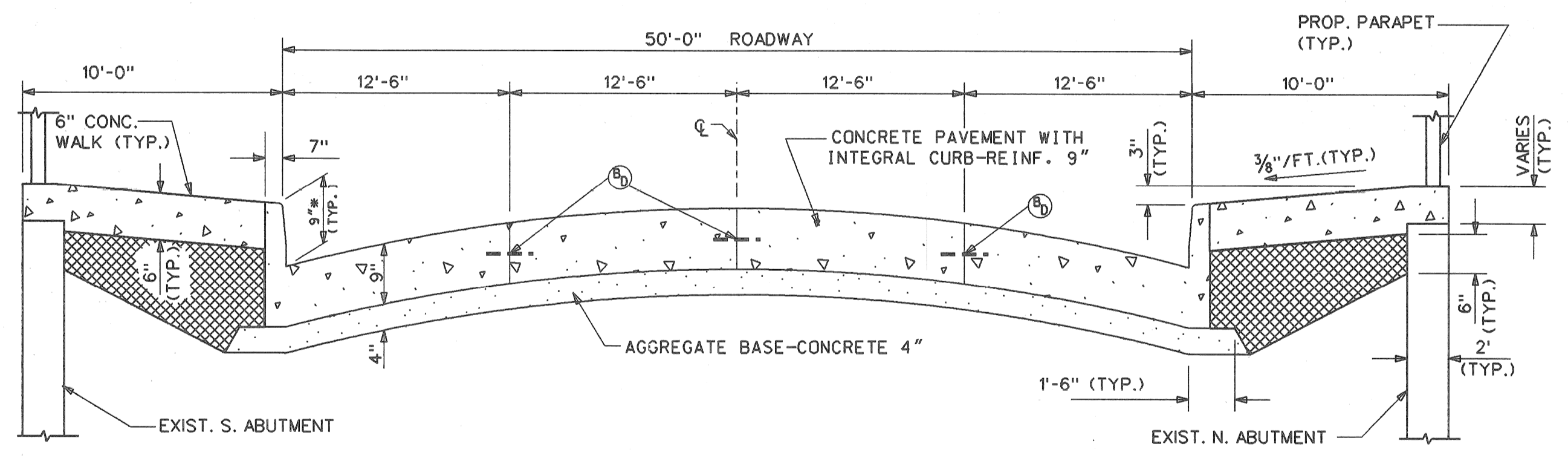
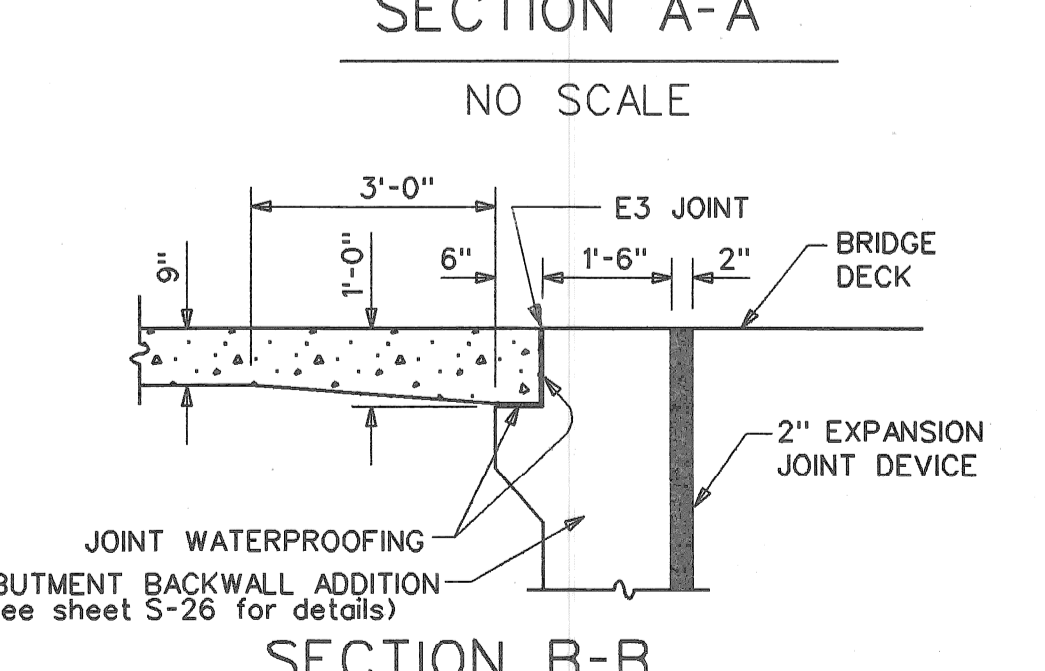
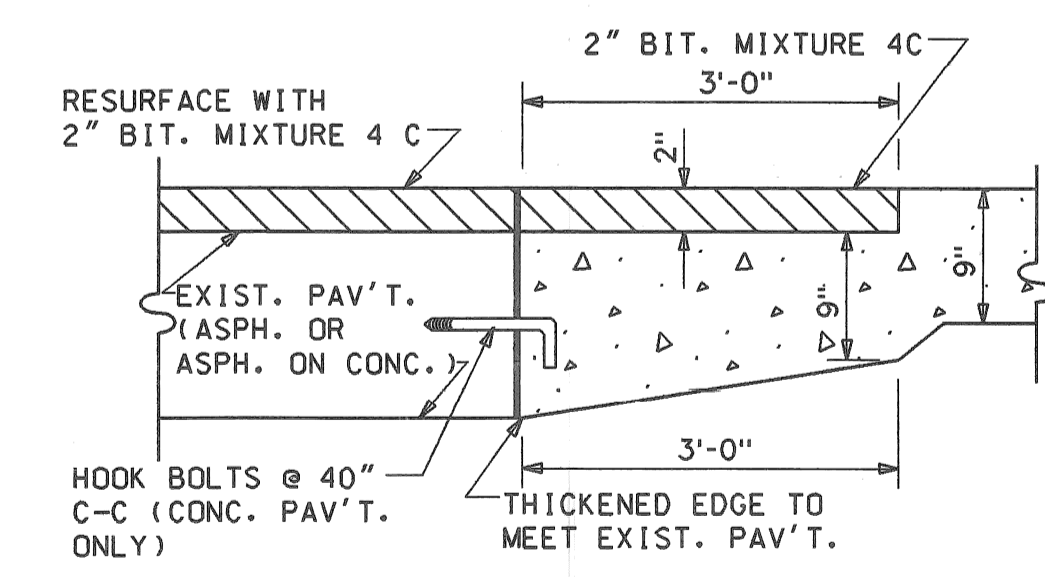
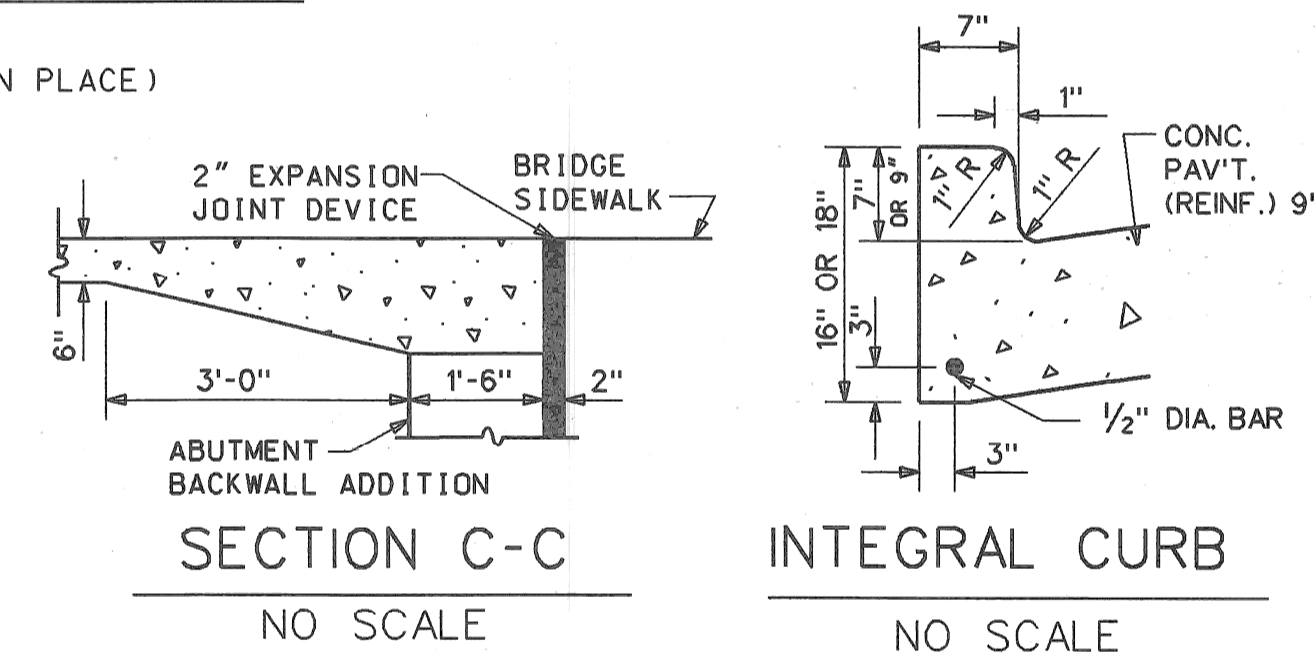
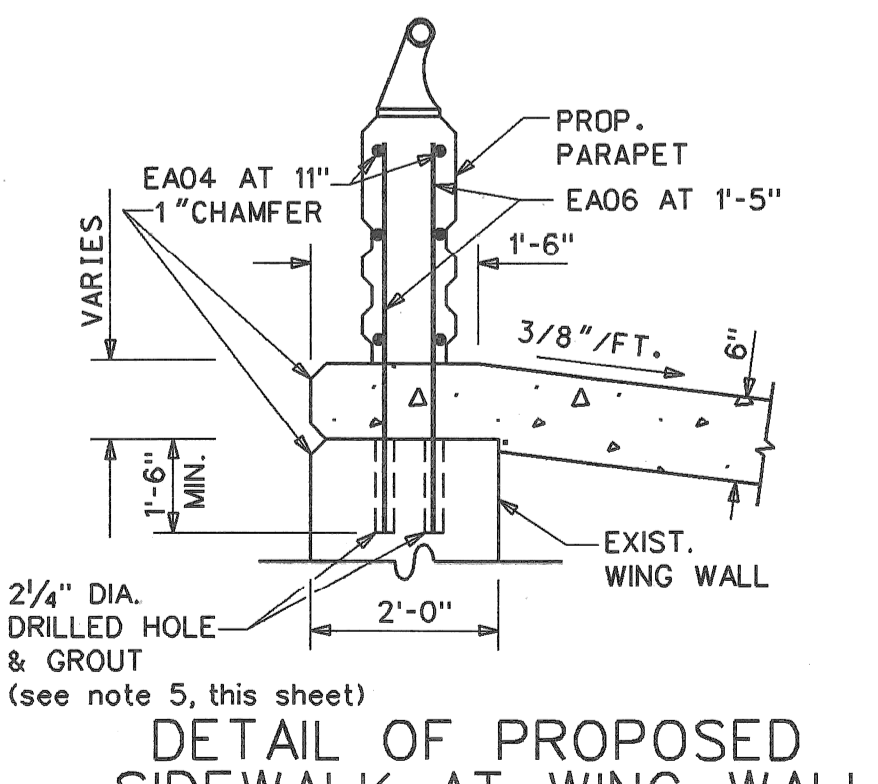
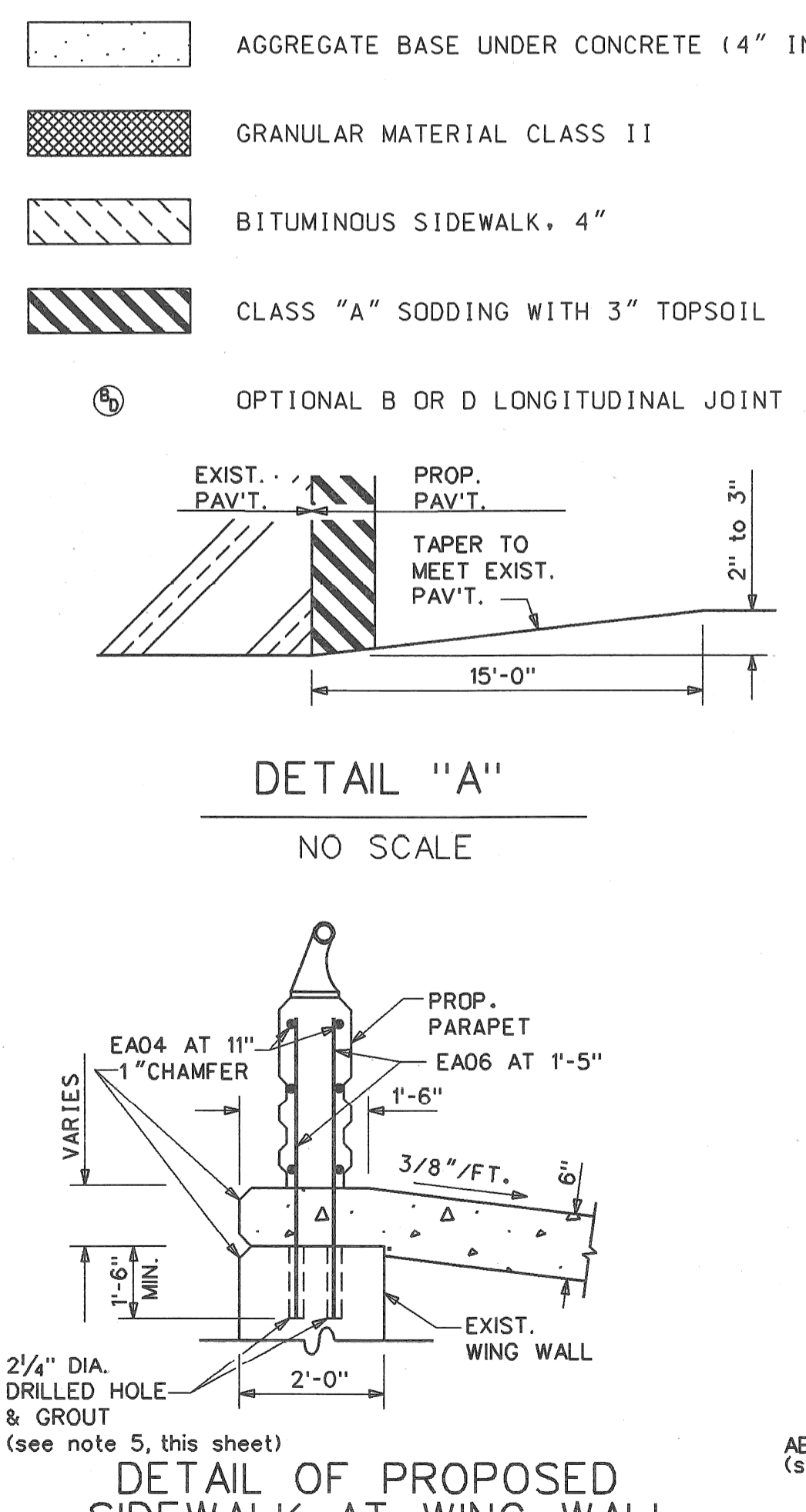


**REMOVAL LEGEND**

**TYPICAL SECTION LEGEND**

- REMOVING PAVEMENT
- REMOVING SIDEWALK
- REMOVING BITUMINOUS SIDEWALK
- REMOVING CONCRETE BRIDGE PARAPET
- AGGREGATE BASE UNDER CONCRETE (4" IN PLACE)
- GRANULAR MATERIAL CLASS II
- BITUMINOUS SIDEWALK, 4"
- CLASS "A" SODDING WITH 3" TOPSOIL
- OPTIONAL B OR D LONGITUDINAL JOINT
- CONC. PAV'T. WITH INTEGRAL CURB-REINF. 9"
- CONC. BASE COURSE WITH INT. CURB-REINF. 9" AND 2" BITUMINOUS SURFACE
- REMOVING BITUMINOUS SURFACE & RESURFACE
- CONCRETE SIDEWALK, 6"
- BITUMINOUS SIDEWALK, 4" (see note 6, this sheet)
- BRIDGE PARAPET ON CONC. WALK
- CLASS "A" SODDING WITH 3" TOPSOIL
- BACKFILL AND CLASS "A" SODDING
- CLASS C-76-III 12" SEWER IN TRENCH DETAIL B
- CATCH BASIN "A"
- ADJUSTING DRAINAGE STRUCTURE COVER, CASE 2
- TRANSVERSE EXPANSION JOINT
- TRANSVERSE CONTRACTION JOINT

**PAVING PLAN LEGEND**



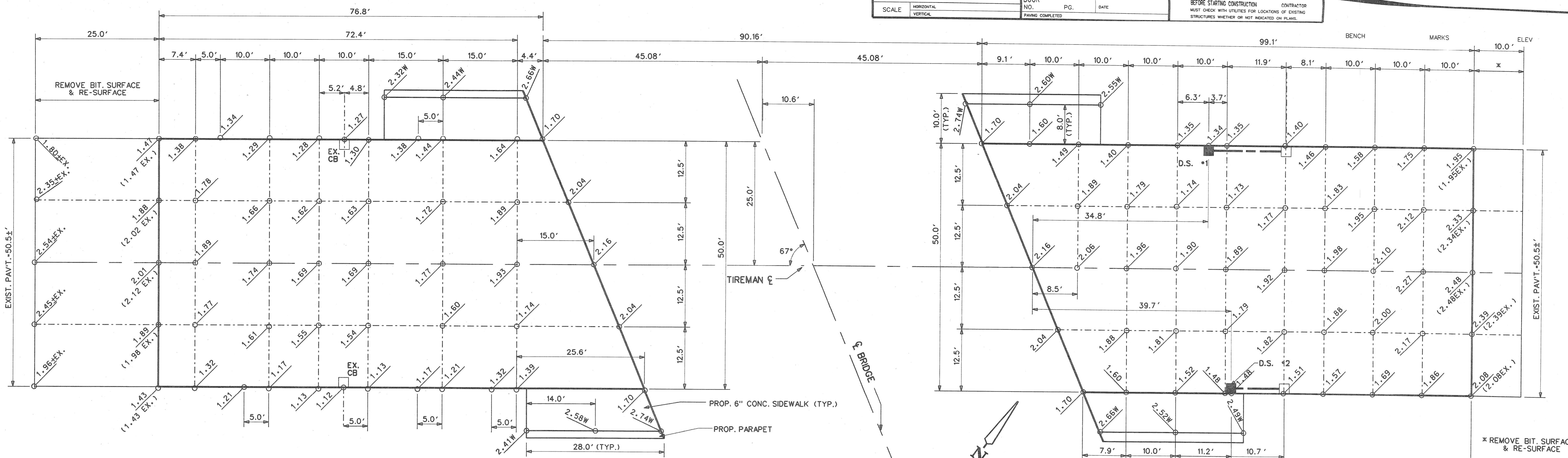
DESCRIPTION	OR	NO.	DATE	BY	CHECKED BY	APPROVED BY
PLAN				N.W., K.M.		Earl C. Howard
GRADE						
ESTIMATE						
FINAL						

CITY OF DETROIT  
CITY ENGINEERING DIVISION - D.P.W.  
BUREAU OF STREETS AND HIGHWAYS

TIREMAN AVENUE BRIDGE OVER ROUGE RIVER (BW-265)  
APPROACH REMOVAL PLAN, PROPOSED SECTIONS & DETAILS

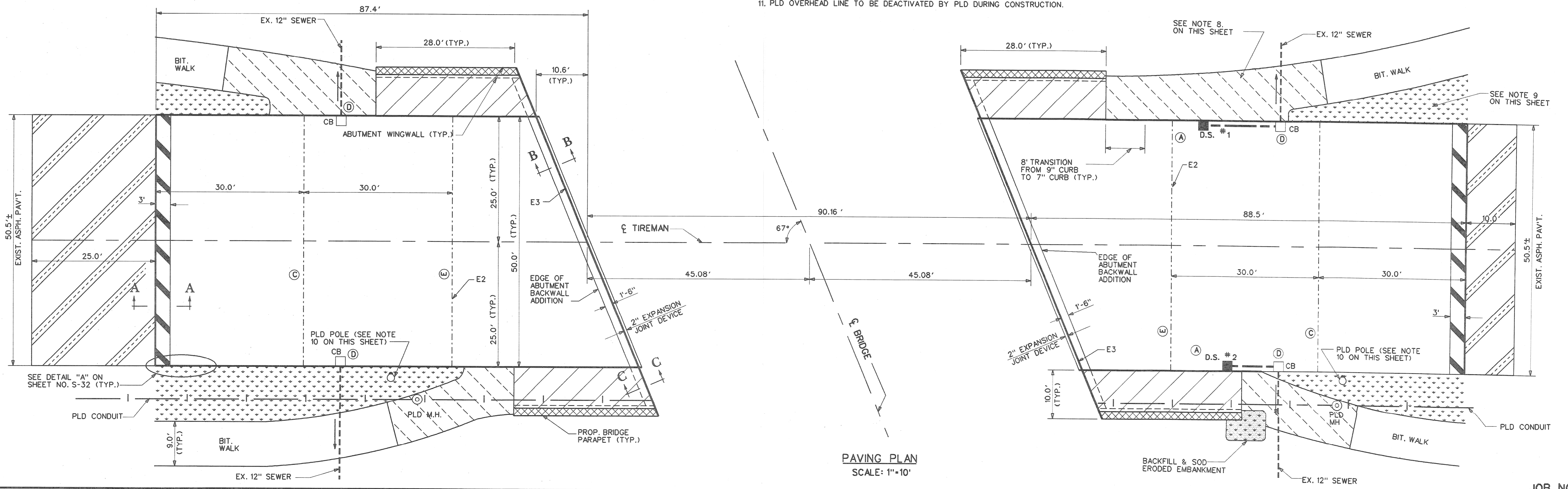
JOB NO. 36917A

SHEET S-32 OF SHEETS
CONTRACT NO.
ASSIGNMENT NO. 93-22-17
DATE MAR., 1997



**NOTES:**

1. FOR SURVEY BENCH MARK LOCATIONS AND ELEVATIONS SEE SHEET NO. S-21.
2. ADD 120.00 TO ELEVATIONS SHOWN.
3. FOR ELEVATIONS SHOWN, "W" DENOTES TOP OF WALK ELEVATIONS. ALL OTHER ELEVATIONS SHOWN ARE PAVEMENT SURFACE ELEVATIONS.
4. FOR PAVING PLAN LEGEND, CROSS SECTIONS AND DETAILS SEE SHEET NO. S-32.
5. FOR DRAINAGE STRUCTURE DETAILS SEE SHEET NO. S-34.
6. SEE ALSO NOTES ON SHEET NO. S-32 AND ON SHEET NO. S-34.
7. FOR PAY QUANTITIES APPLICABLE TO THIS SHEET, SEE SHEET NO. S-34.
8. REPLACE DISTURBED BITUMINOUS WALK WITH 1" BIT. MIX 36-A OVER 3" BIT. MIX 3C AS DIRECTED BY THE ENGINEER.
9. RESTORE DISTURBED GROUND AREAS WITH CLASS "A" SODDING ON 3" TOPSOIL AS DIRECTED BY THE ENGINEER.
10. PLD POLE TO BE RELOCATED BY PLD.
11. PLD OVERHEAD LINE TO BE DEACTIVATED BY PLD DURING CONSTRUCTION.



**PAVING PLAN**  
SCALE: 1"=10'

PLAN	N.W.,K.M.	CHECKED BY	APPROVED:
GRADE	N.W.,K.M.		<i>Earl C. Howard</i>
ESTIMATE			
DESCRIPTION	DR	CHK	DATE
REVISIONS	FINAL	****	****

**CITY OF DETROIT**  
 CITY ENGINEERING DIVISION - D.P.W.  
 BUREAU OF STREETS AND HIGHWAYS

**TIREMAN AVENUE BRIDGE OVER ROUGE RIVER (BW-265)**  
**APPROACH PAVING PLAN AND DETAILED GRADES**

JOB NO. 36917A  
 SHEET S-33 OF SHEETS  
 CONTRACT NO.  
 ASSIGNMENT NO. 93-22-17  
 DATE MAR., 1997