

BEFORE STARTING CONSTRUCTION, CONTRACTOR MUST CHECK WITH UTILITY LOCATIONS OF EXISTING UTILITIES, WHETHER OR NOT INDICATED ON PLAN.

NOTE - FOR SYMBOLS & ETC. SEE STANDARD DETAIL DRAWING NO. C-474

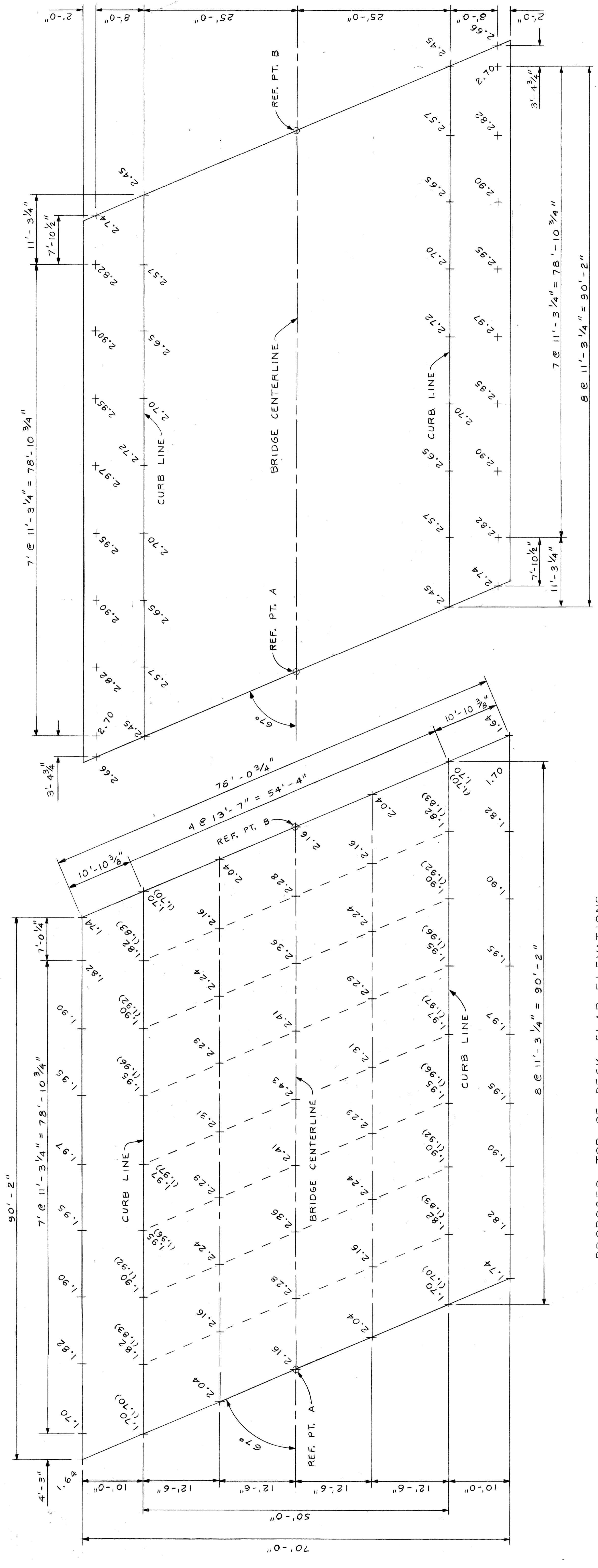
BOOK NO.	LEVEL	DATE
HORIZONTAL	VERTICAL	SCALE

MARKS

BENCH

ELEV

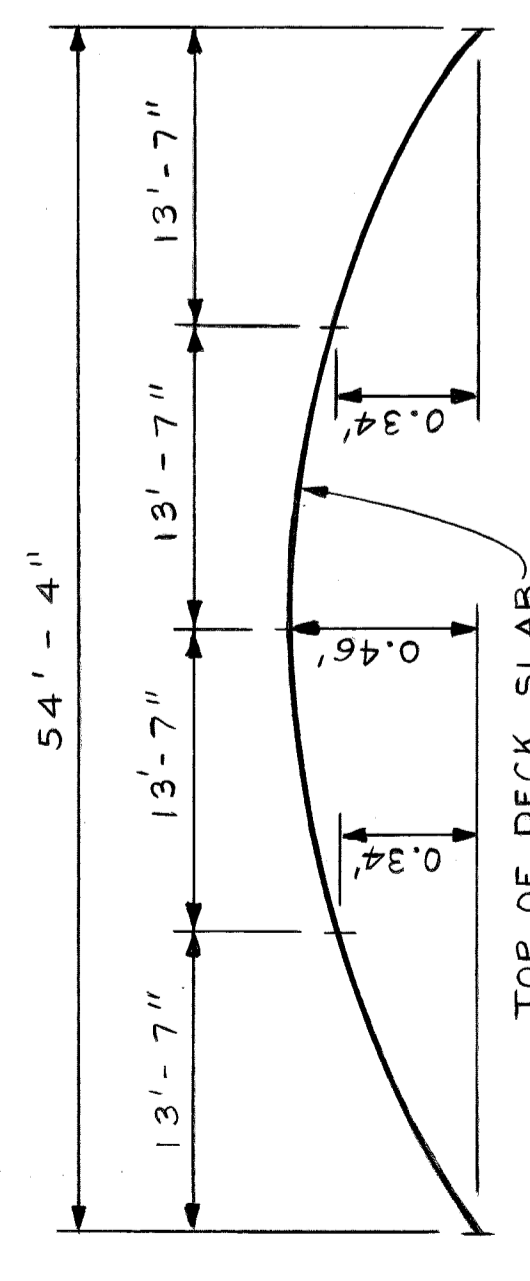
ADD 120.00 FT. TO ELEVATIONS SHOWN.



PROPOSED TOP OF DECK SLAB ELEVATIONS
SCALE: 1/8" = 1'-0"

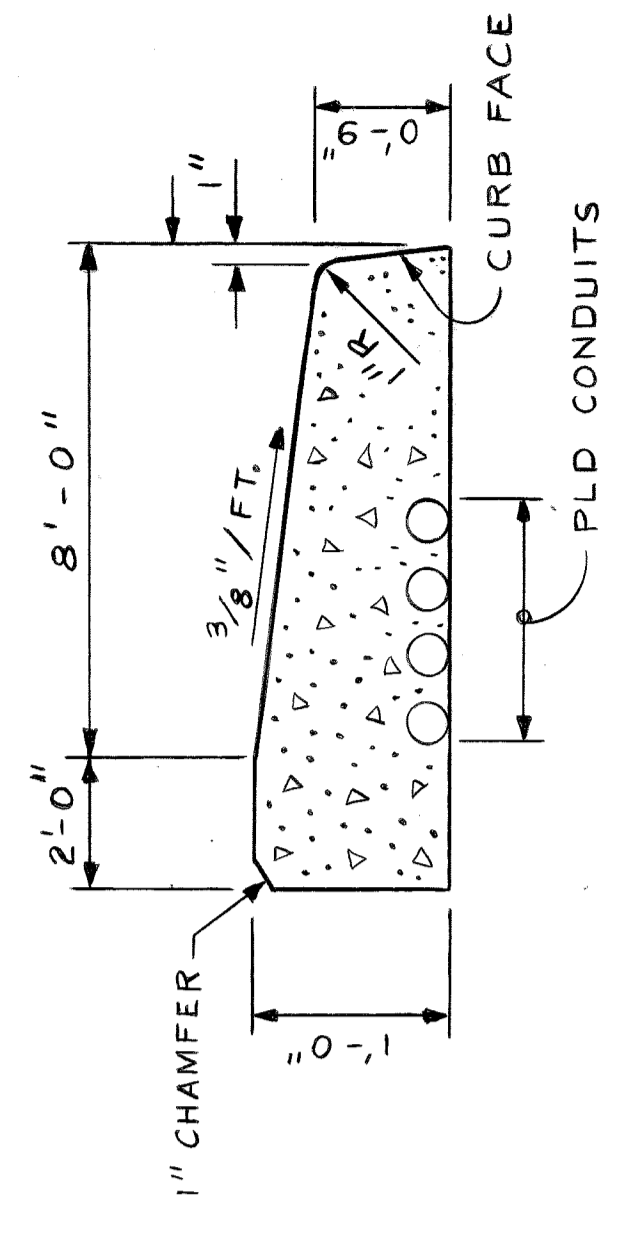
NOTES

- ALL ELEVATIONS ARE BASED ON CITY OF DETROIT DATUM.
- FOR SURVEY BENCH MARK LOCATIONS & ELEVATIONS SEE SHEET NO. S-21.
- SIDEWALK POUR SHALL NOT BE CAST UNTIL SLAB CONCRETE HAS ATTAINED AT LEAST 75% OF ITS DESIGN STRENGTH.
- SLAB & SIDEWALK ELEVATIONS ARE BASED ON THE CONDITION THAT ALL CONCRETE BEAMS HAVE ERECTED, BUT NO OTHER LOADS ARE APPLIED. THESE ELEVATIONS INCLUDE ALLOWANCES FOR DEFLECTION DUE TO FORMS, STEEL REINFORCEMENT, DECK CONCRETE AND BARRIERS.
- SCREENED RAILS FOR FINISHING CONCRETE SHALL BE LOCATED OVER FASCIA BEAMS.
- SCREENED ELEVATIONS ARE SHOWN IN PARENTHESIS THUS ().
- TRANSVERSE SIDEWALK CONTRACTION JOINTS ARE TO BE AT 8-FT. INTERVALS OR AS DIRECTED BY THE ENGINEER.



TYPICAL SECTION FOR TOP OF DECK SLAB BETWEEN CURB LINES AT 67° DIAGONAL
NO SCALE

PROPOSED SIDEWALK ELEVATIONS
SCALE: 1/8" = 1'-0"

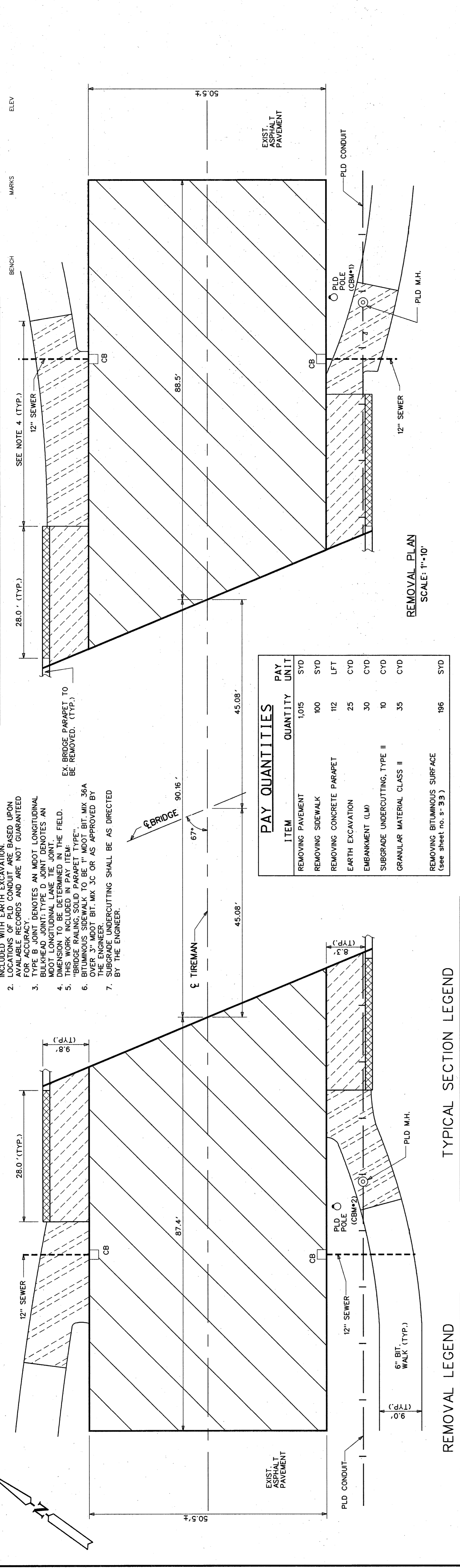


TYPICAL SIDEWALK SECTION
NO SCALE

JOB NO. : 36917A			
SHEET S-31 OF SHEETS		CONTRACT NO.	
ASSIGNMENT NO. 93-22-17		DATE MAR., 1997	
TIREMAN AVE. BRIDGE OVER ROUGE RIVER (BW-265) PROPOSED DECK SLAB AND SIDEWALK ELEVATIONS			
CITY OF DETROIT CITY ENGINEERING DIVISION D.P.W. BUREAU OF STREETS AND HIGHWAYS			
APPROVED:	CHECKED BY:	BY:	NO.
<i>Camel Co. Howard</i>		N.W.	
		N.W.	
		ESTIMATE	
		FINAL	
DESCRIPTION	DATE	BY	NO.
REVISIONS			

BEFORE STARTING CONSTRUCTION CONTRACTOR MUST CHECK WITH UTILITIES FOR LOCATION OF EXISTING UTILITIES AND MARK THEM AS SHOWN ON THIS PLAN.

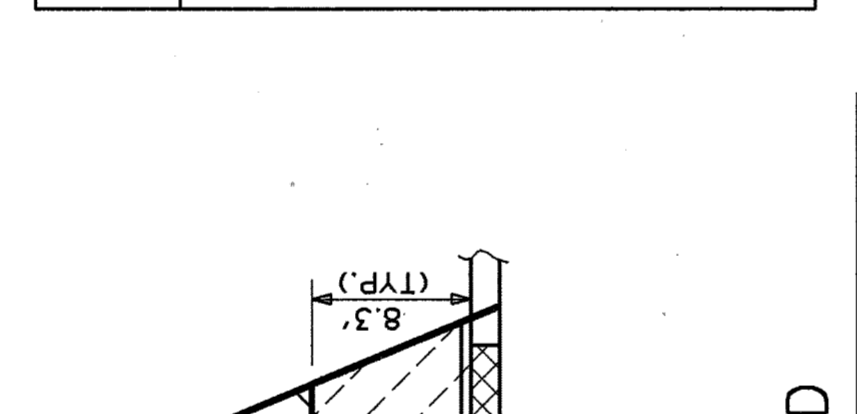
BOOK NO. _____
 PAGE NO. _____
 DATE _____



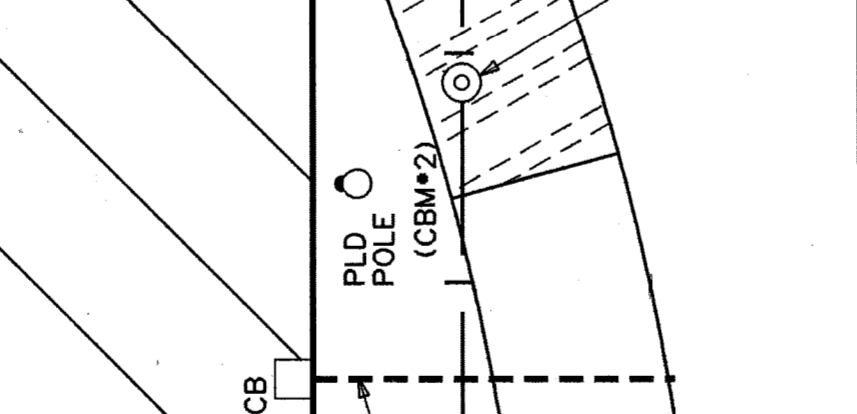
ITEM	QUANTITY	PAY UNIT
REMOVING PAVEMENT	1,015	SYD
REMOVING SIDEWALK	100	SYD
REMOVING CONCRETE PARAPET	112	LFT
EARTH EXCAVATION	25	CYD
EMBANKMENT (LM)	30	CYD
SUBGRADE UNDERCUTTING, TYPE II	10	CYD
GRANULAR MATERIAL CLASS II	35	CYD
REMOVING BITUMINOUS SURFACE (see sheet no. S-32)	196	SYD

NOTES:
 1. REMOVAL OF BITUMINOUS SIDEWALK SHALL BE INCLUDED WITH EARTH EXCAVATION.
 2. LOCATIONS OF PLD CONDUIT ARE BASED UPON AVAILABLE RECORDS AND ARE NOT GUARANTEED FOR ACCURACY.
 3. TYPE B JOINT DENOTES AN MDOOT LONGITUDINAL BULKHEAD JOINT; TYPE D JOINT DENOTES AN MDOOT LONGITUDINAL LANE TIE JOINT.
 4. DIMENSION TO BE DETERMINED IN THE FIELD.
 5. THIS WORK INCLUDED IN PAY ITEM: "BRIDGE RAILING, SOLID PARAPET TYPE".
 6. BITUMINOUS SIDEWALK TO BE 1" MDOOT BIT. MIX 36A OVER 3" MDOOT BIT. MIX 3C OR AS APPROVED BY THE ENGINEER.
 7. SUBGRADE UNDERCUTTING SHALL BE AS DIRECTED BY THE ENGINEER.

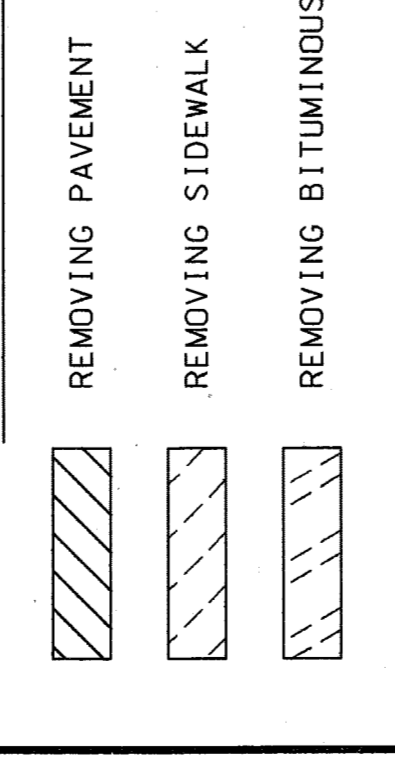
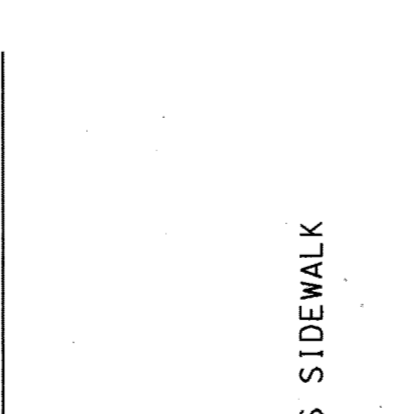
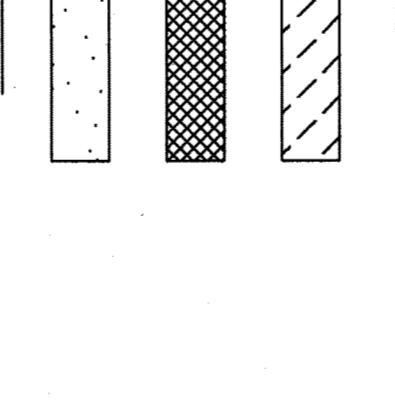
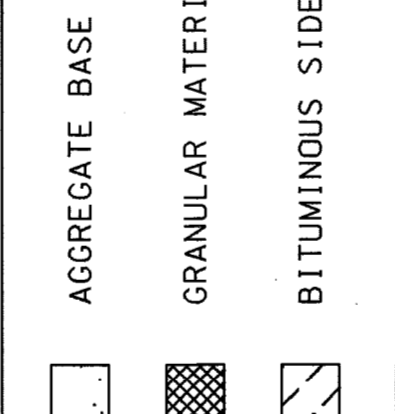
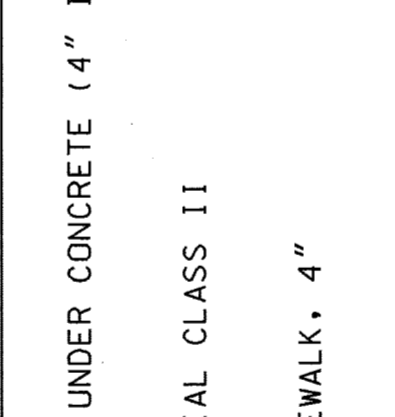
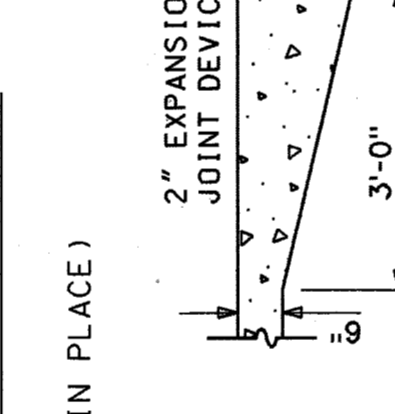
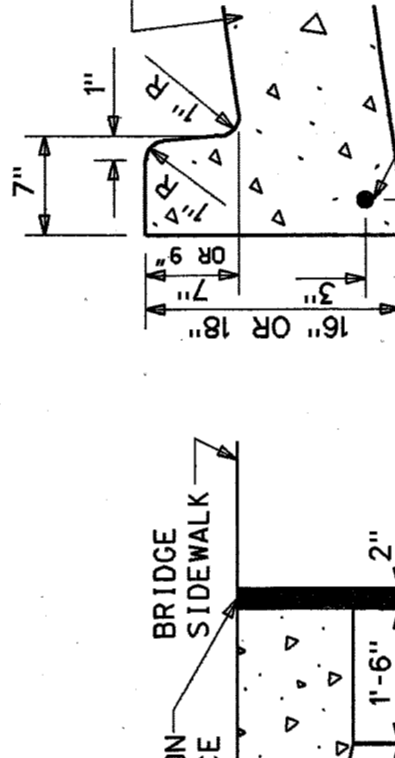
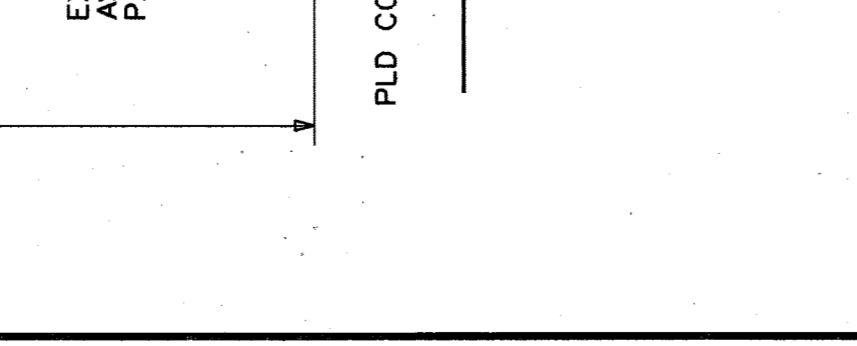
REMOVAL LEGEND



TYPICAL SECTION LEGEND



PAVING PLAN LEGEND



INTEGRAL CURB
NO SCALE

SECTION C-A
NO SCALE

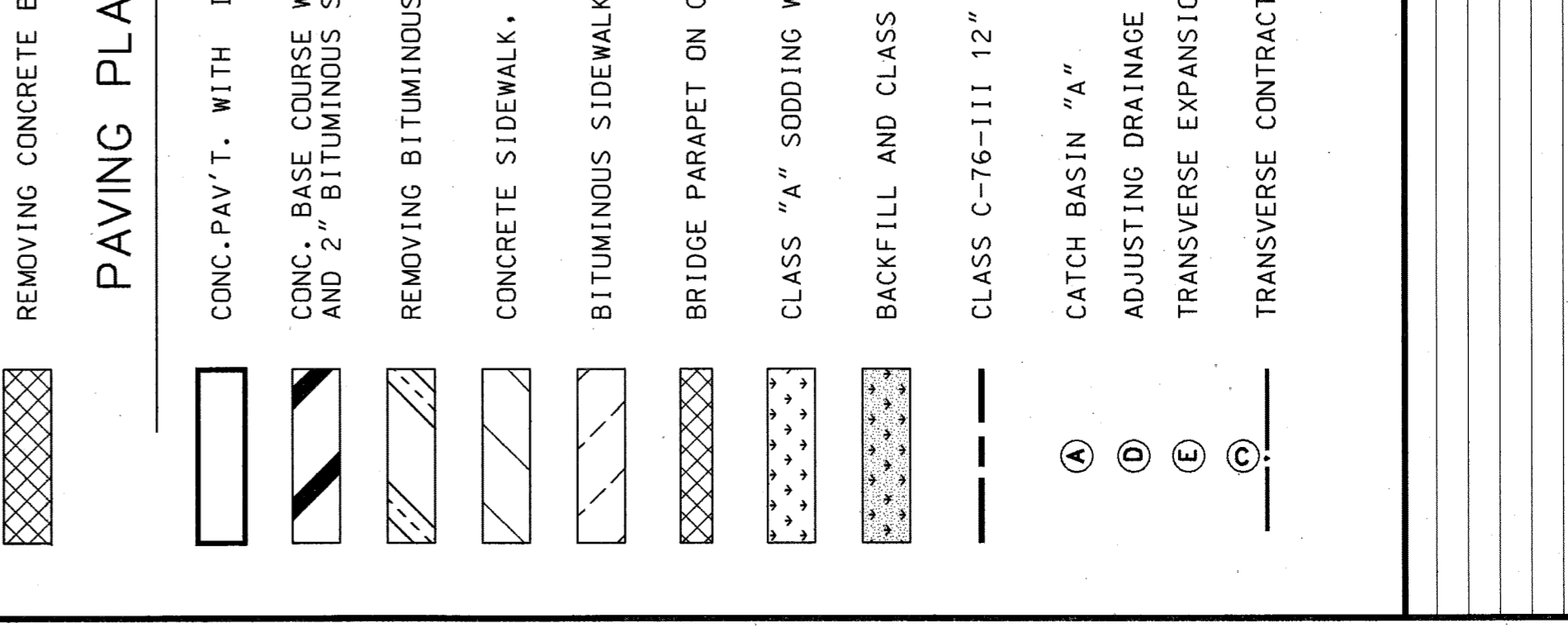
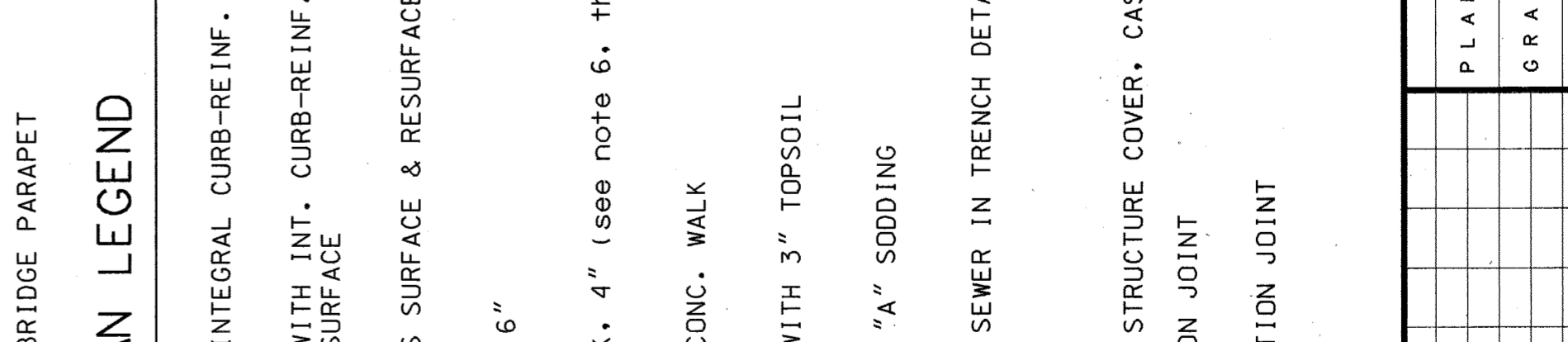
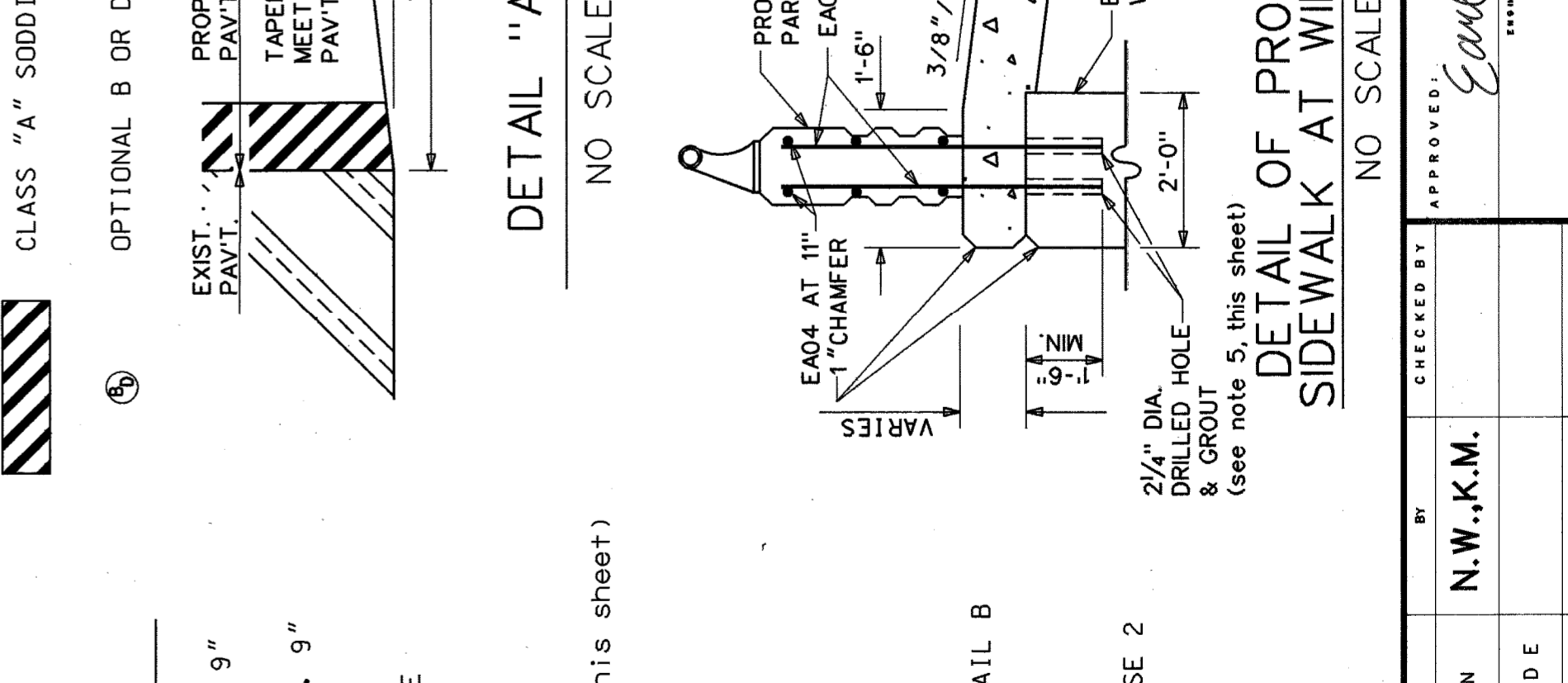
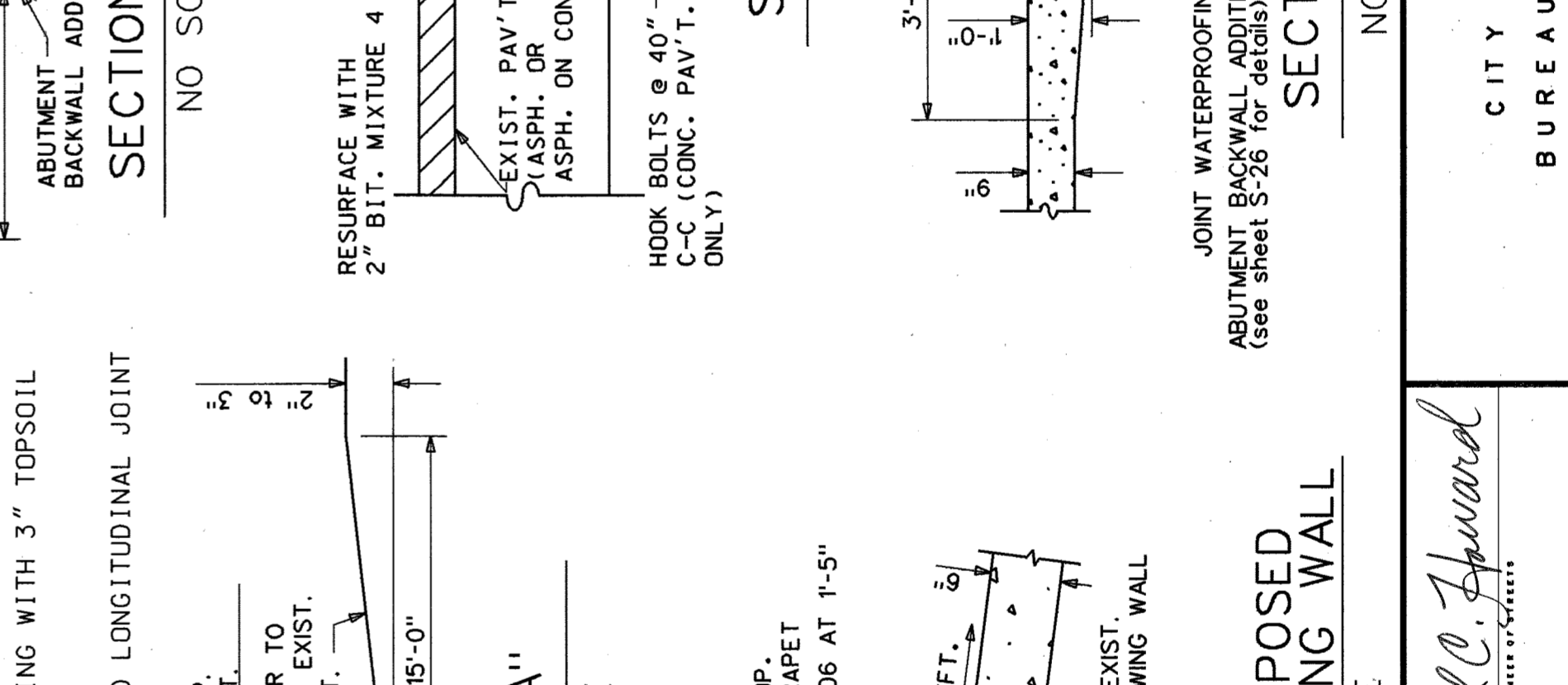
SECTION A-A
NO SCALE

SECTION B-B
NO SCALE

DETAIL "A"
NO SCALE

DETAIL OF PROPOSED SIDEWALK AT WING WALL
NO SCALE

* INCREASES UNIFORMLY TO 9" ALONG TRANSITION (SEE PAVING PLAN).



TYPICAL SECTION FROM BRIDGE DECK TO END OF WING WALL
NO SCALE

TYPICAL SECTION FROM END OF WING WALL TO EXISTING PAV'T.
NO SCALE

JOB NO. 36917A

SHEET S-32 OF _____ SHEETS

CONTRACT NO. _____

ASSIGNMENT NO. 93-22-17

DATE MAR. 1997

TIREMAN AVENUE BRIDGE OVER ROUGE RIVER (BW-265)

APPROACH REMOVAL PLAN, PROPOSED SECTIONS & DETAILS

CITY OF DETROIT

CITY ENGINEERING DIVISION - D.P.W.

BUREAU OF STREETS AND HIGHWAYS

CHECKED BY: *Earl C. Spaword*

APPROVED: _____

BY: N.W.,K.M.

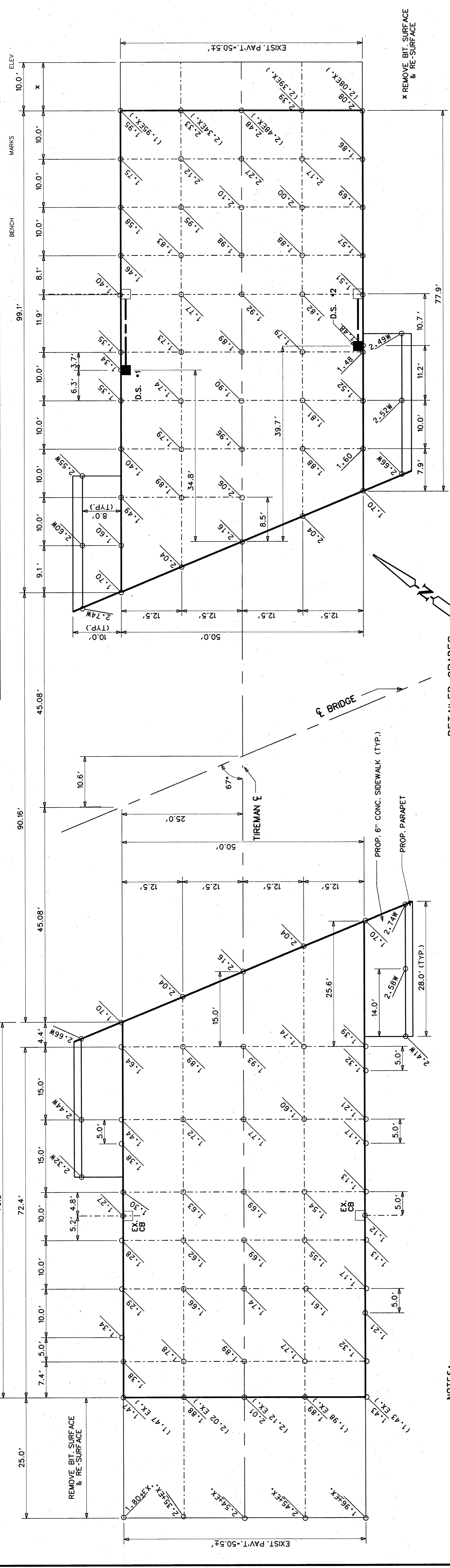
PLAN	_____
GRADE	_____
ESTIMATE	_____
DESCRIPTION	_____

REVISIONS

NO.	DATE	DESCRIPTION	INITIALS

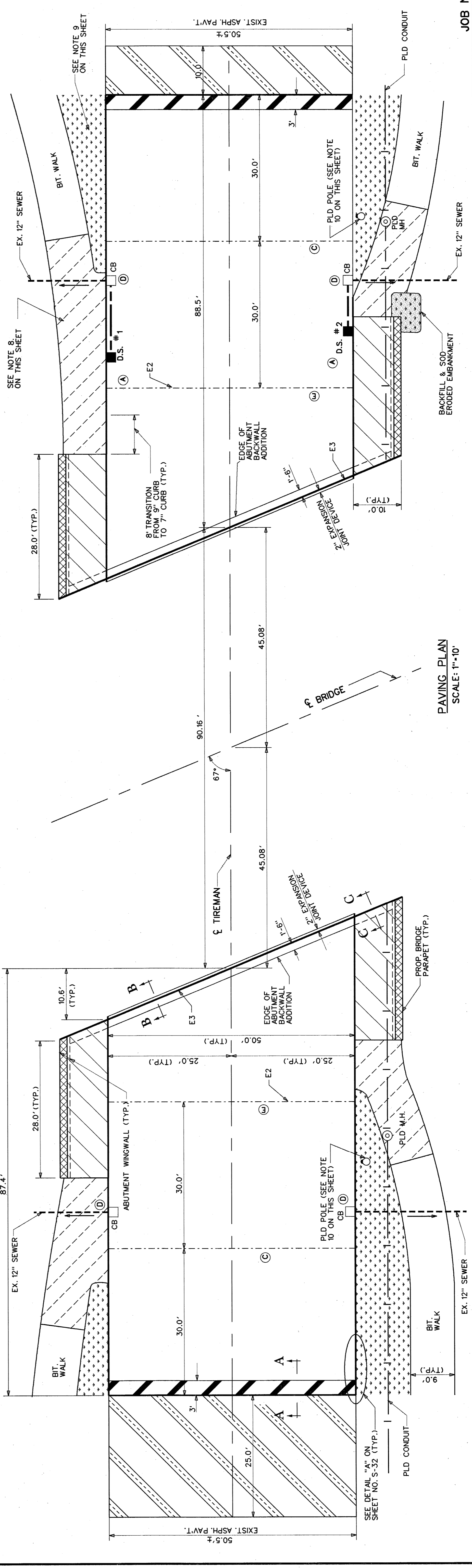
FINAL

BOOK NO. PG. DATE
 SCALE HORIZONTAL VERTICAL
 BEFORE STARTING CONSTRUCTION CONTRACTOR MUST CHECK WITH UTILITIES FOR LOCATIONS OF EXISTING UTILITIES AND RECORD ANY CHANGES TO THESE.



DETAILED GRADES
 SCALE: 1"=10'

- NOTES:
1. FOR SURVEY BENCH MARK LOCATIONS AND ELEVATIONS SEE SHEET NO. S-21.
 2. FOR ELEVATIONS OF CURBS, GUTTERS, AND SIDEWALKS, SEE SHEET NO. S-32.
 3. FOR ELEVATIONS SHOWN "W" DENOTES TOP OF WALK ELEVATIONS, ALL OTHER ELEVATIONS SHOWN ARE PAVEMENT SURFACE ELEVATIONS.
 4. FOR PAVING PLAN LEGEND, CROSS SECTIONS AND DETAILS SEE SHEET NO. S-32.
 5. FOR DRAINAGE STRUCTURE DETAILS SEE SHEET NO. S-34.
 6. SEE ALSO NOTES ON SHEET NO. S-32 AND ON SHEET NO. S-34.
 7. FOR PAY QUANTITIES APPLICABLE TO THIS SHEET, SEE SHEET NO. S-34.
 8. REPLACE DISTURBED BITUMINOUS WALK WITH 1" BIT. MIX 36-A OVER 3" BIT. MIX 3C AS DIRECTED BY THE ENGINEER.
 9. RESTORE DISTURBED GROUND AREAS WITH CLASS "A" SODDING ON 3" TOPSOIL AS DIRECTED BY THE ENGINEER.
 10. PLD POLE TO BE RELOCATED BY PLD.
 11. PLD OVERHEAD LINE TO BE DEACTIVATED BY PLD DURING CONSTRUCTION.



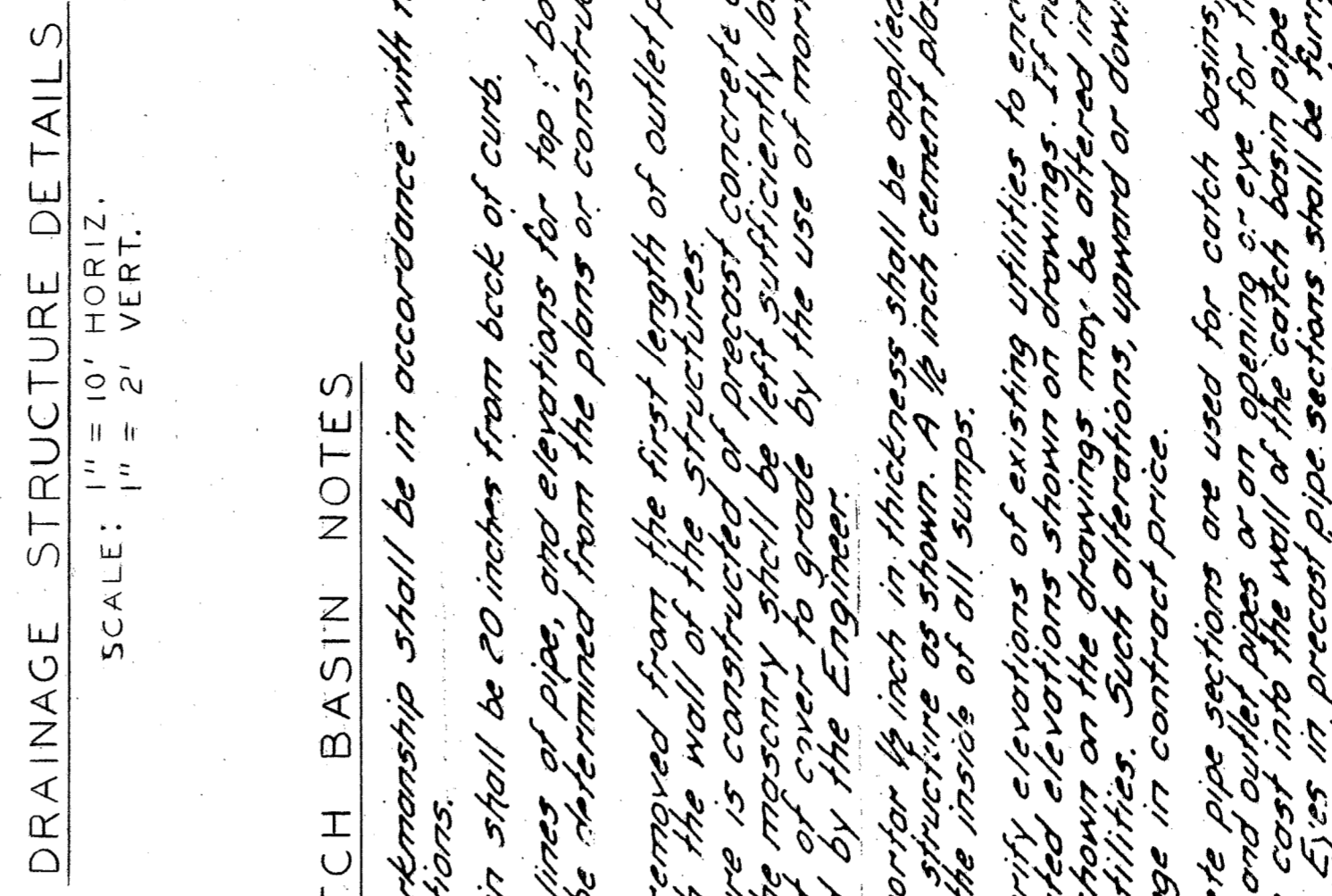
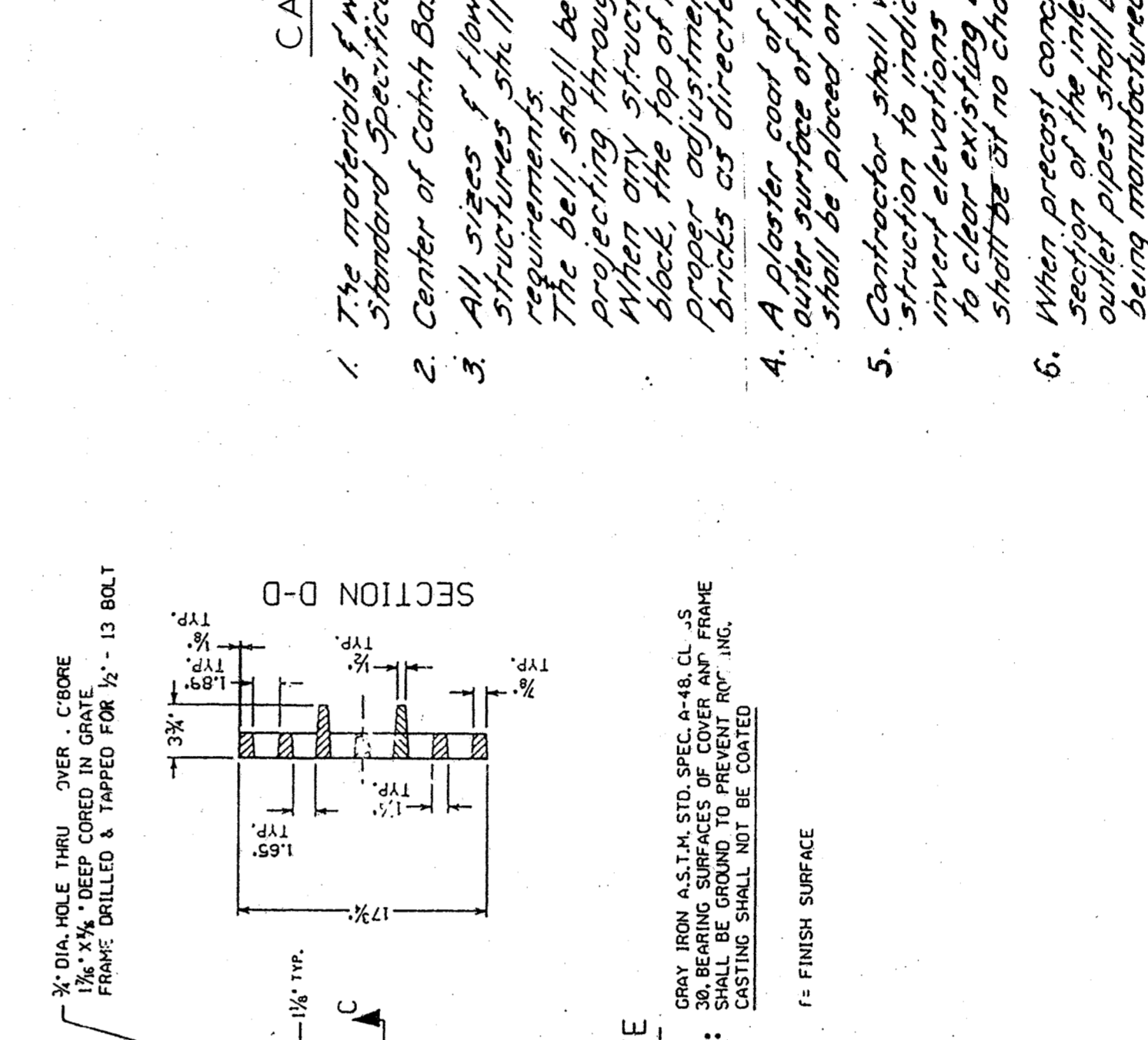
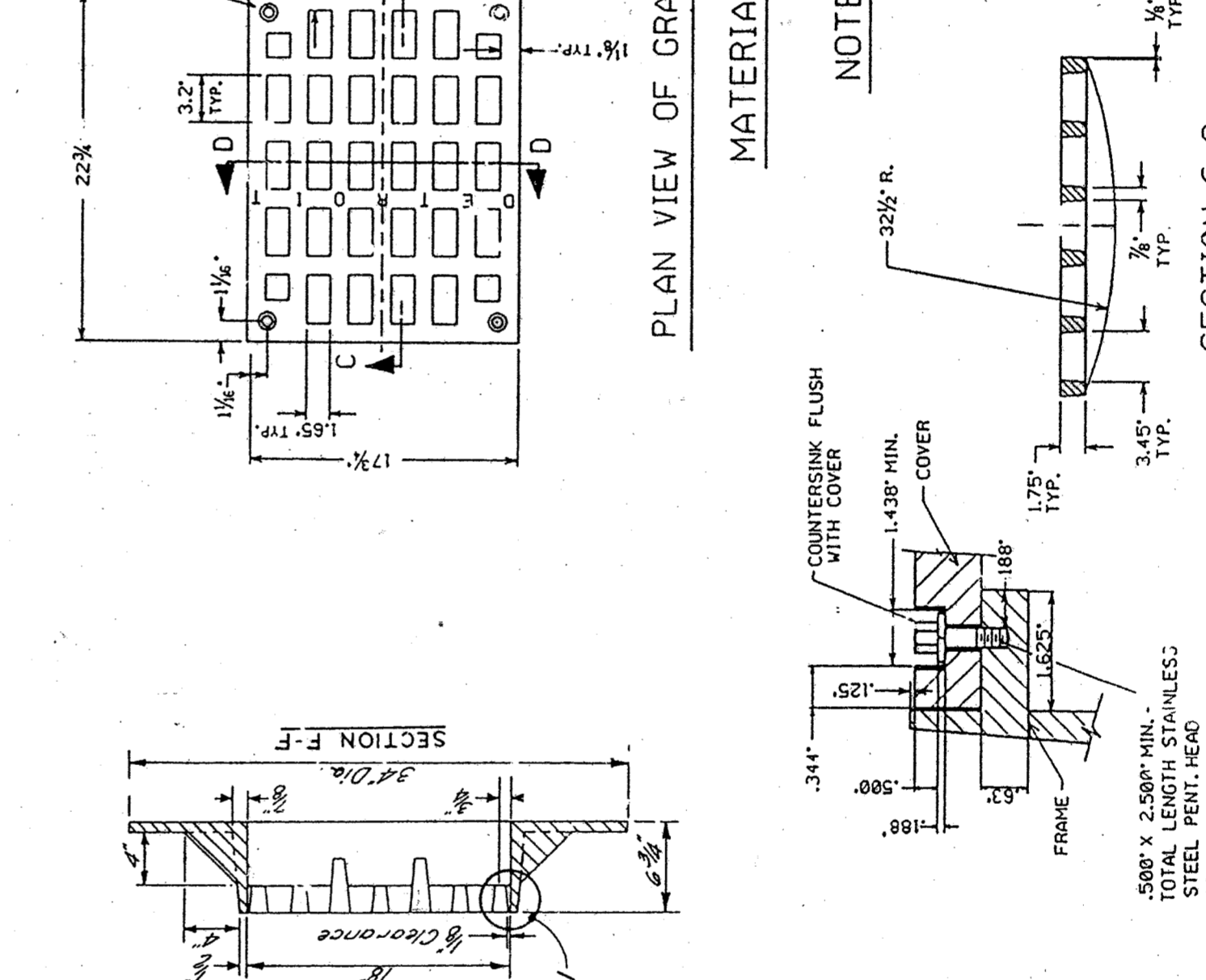
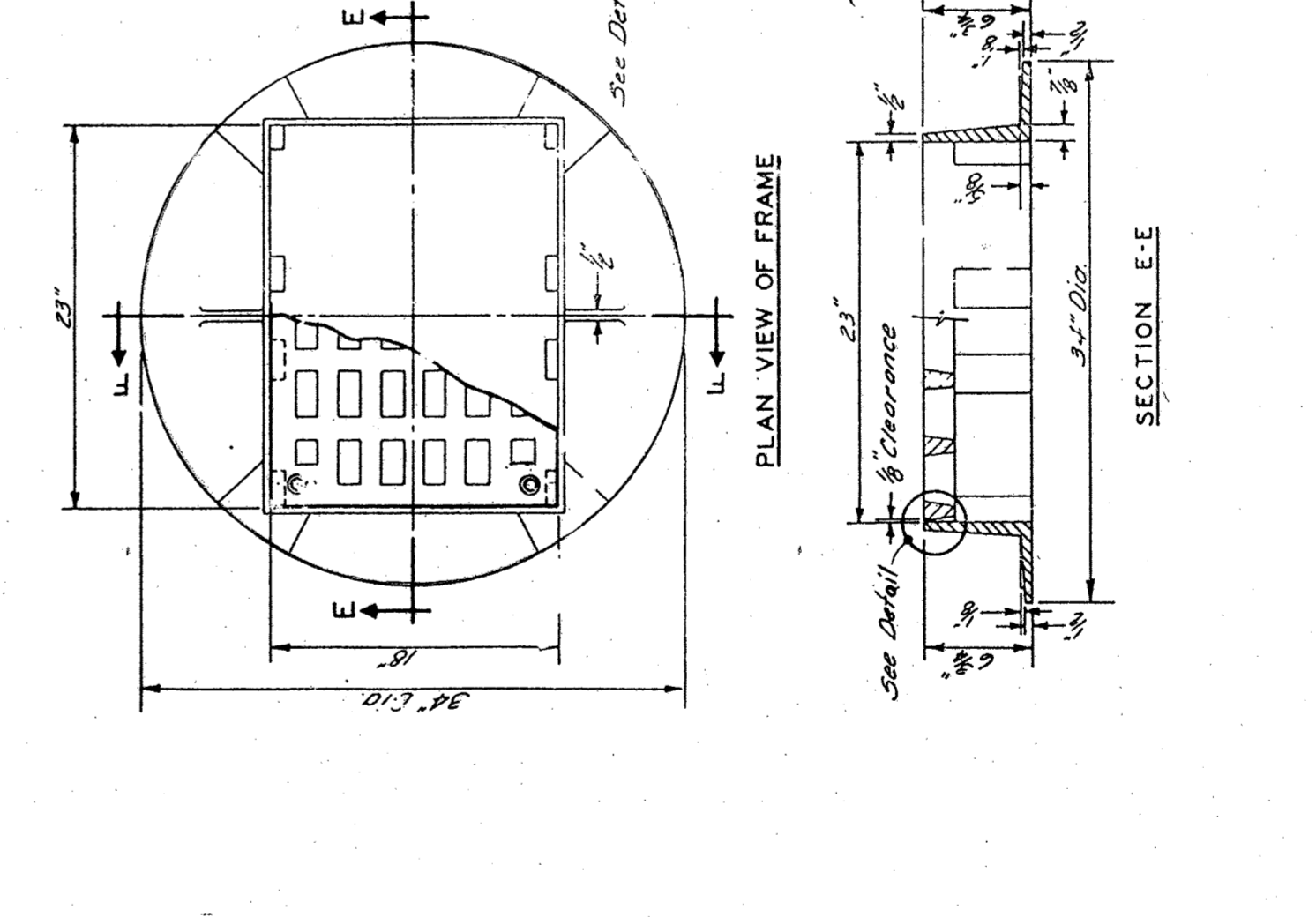
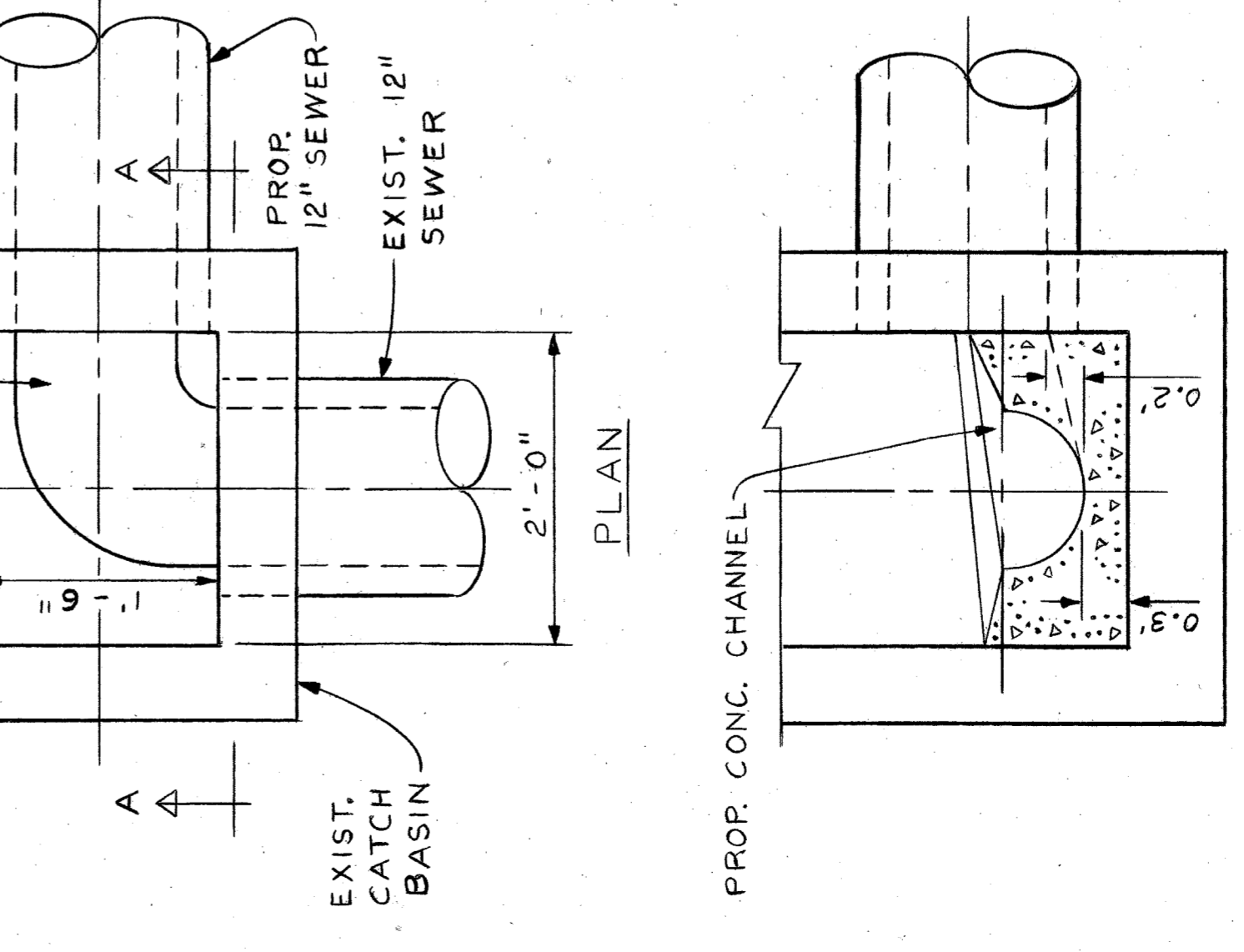
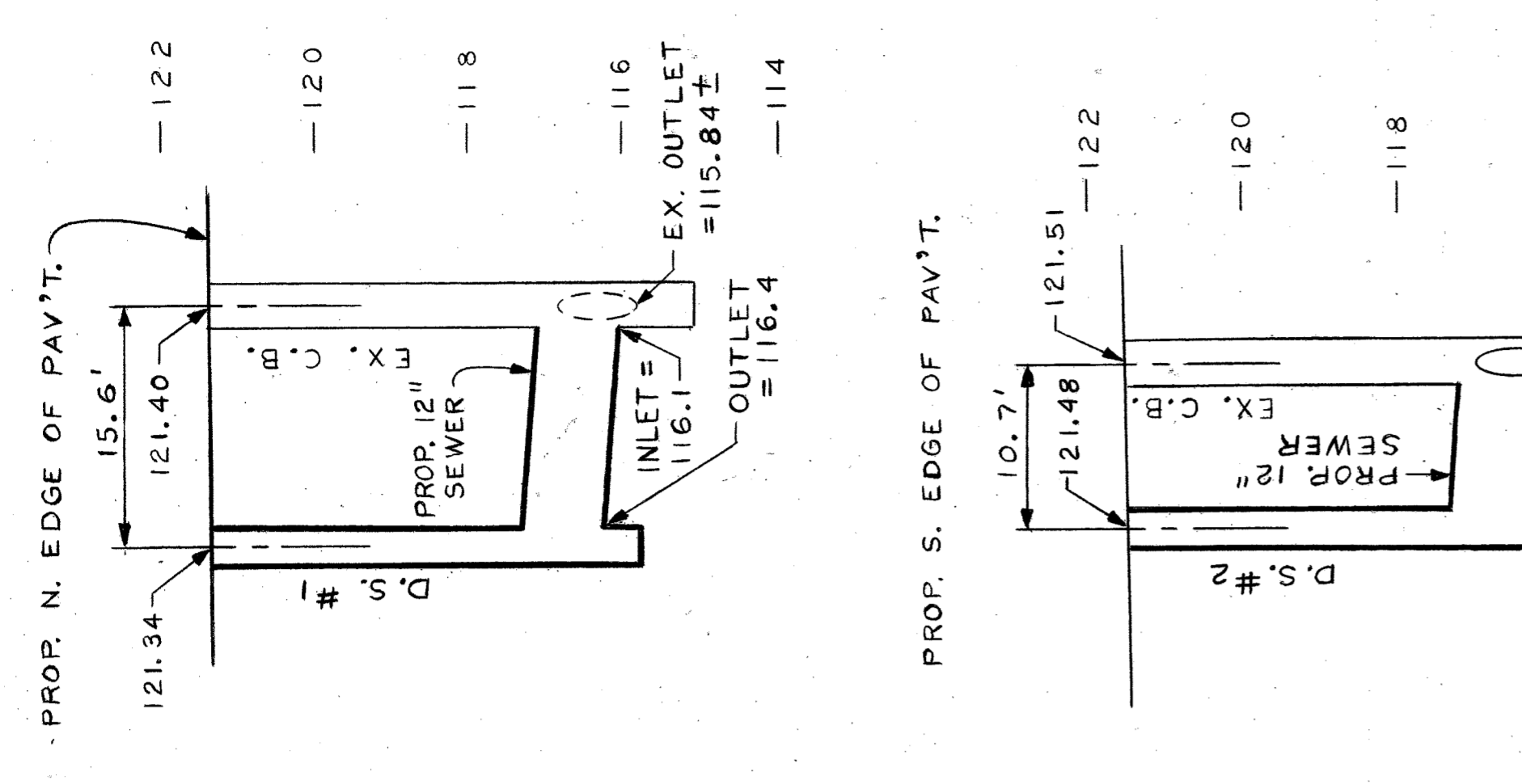
PAVING PLAN
 SCALE: 1"=10'

SHEET S-33 OF SHEETS CONTRACT NO. ASSIGNMENT NO. 93-22-17 DATE MAR., 1997		JOB NO. 36917A	
TIREMAN AVENUE BRIDGE OVER ROUGE RIVER (BW-265) APPROACH PAVING PLAN AND DETAILED GRADES			
CITY OF DETROIT CITY ENGINEERING DIVISION - D.P.W. BUREAU OF STREETS AND HIGHWAYS		APPROVED: <i>Gaul C. Howard</i> CHECKED BY:	
PLAN GRADE ESTIMATE FINAL	N.W., K.M. N.W., K.M.	N.W., K.M. N.W., K.M.	***** *****
DESCRIPTION REVISIONS	DATE DRAWN BY CHECKED BY	DATE DRAWN BY CHECKED BY	DATE DRAWN BY CHECKED BY

- NOTES**
- Install 12-inch dia. C-76-III sewers in trench detail B.
 - Verify diameters and invert elevations of existing sewers in the field.
 - For a profile view of the existing bridge parapet see sheet no. S-23.
 - For details of the proposed parapet see sheet no. S-26. See also MDOT Standard Plan X-18D, "Bridge Railing, Solid Parapet Type".
 - Transverse contraction joints on approach sidewalks shall be spaced at 6 ft. intervals.
 - Replace disturbed bituminous walk with 1" MDOT Bit. Mix 36A over 3" MDOT Bit. Mix 3C or other approved mixture as directed by the Engineer.
 - Restore disturbed ground areas with Class A sodding on 3" topsoil as directed by the engineer.
 - Backfill eroded embankment with selected excavated material (included with construction).
 - For PLD manhole reconstruction see sheet no. S-35.
 - For PLD conduit reconstruction see sheet no. S-35.
 - Provide double-yellow L pavement markings conforming to Detroit DOT Field Pavement Marking Standards No. SG-50. Markings are to be of polyester material.

PAY QUANTITIES

ITEM	QUANTITY	PAY UNIT
AGGREGATE BASE UNDER CONCRETE (4" IN PLACE)	1,043	SYD
STRUCTURAL BACKFILL	90	CYD
CONCRETE SIDEWALK, 6"	1,120	SFT
CONCRETE PAVEMENT WITH INTEGRAL CURB-REINF. 9"	1,005	SYD
BRIDGE RAILING, SOLID PARAPET TYPE	112	LFT
CLASS C-76-III SEWER, 12" TRENCH DETAIL B	27	LFT
SEWER TAP, 12"	2	EACH
SEWER CLEANOUT	300	LFT
ADJUSTING DRAINAGE STRUCTURE COVER, CASE 2	6	EACH
MISC. CATCH BASIN TYPE A	2	EACH
BITUMINOUS MIXTURE, 3C	39	TON
BITUMINOUS MIXTURE, 4C	16	TON
BITUMINOUS MIXTURE, 36A	7	TON
OVERLAY COLD PLASTIC PAVEMENT MARKING, 4" YELLOW	440	LFT
CLASS A SODDING	124	SYD
WATER	2	UNIT
TOPSOIL SURFACE, 3"	124	SYD
CLEANING DRAINAGE STRUCTURE	4	EACH
CONTRACTION JOINT C	100	LFT
EXPANSION JOINT E2	100	LFT
EXPANSION JOINT E3	152	LFT
STEEL REINFORCEMENT, EPOXY-COATED	970	LBS
JOINT WATERPROOFING	230	SFT



- CATCH BASIN NOTES**
- The materials of workmanship shall be in accordance with the current Standard Specifications.
 - Center of Catch Basin shall be 20 inches from back of curb.
 - All sizes of flow lines of pipe, and elevations for top of bottom of structures shall be determined from the plans or construction requirements. The bell shall be removed from the first length of outlet pipe projecting through the wall of the structures when any structure is constructed of precast concrete or concrete block, the top of the masonry shall be left sufficiently low to permit proper adjustment of cover to grade by the use of mortar or bricks as directed by the Engineer.
 - A plaster coat of mortar 1/4 inch in thickness shall be applied to the outer surface of the structure as shown. A 1/2 inch cement plaster coat shall be placed on the inside of all sumps.
 - Contractor shall verify elevations of existing utilities to enable construction to indicated elevations shown on drawings. If necessary, invert elevations shown on the drawings may be altered in the field to clear existing utilities. Such alterations, upward or downward, shall be at no charge in contract price.
 - When precast concrete pipe sections are used for catch basins, either a section at the inlet and outlet pipes or an opening 2'-eye for the inlet and outlet pipes shall be cast into the wall of the catch basin pipe when it is being manufactured. Eyes in precast pipe sections shall be furnished to accommodate a flexible joint connection, such as Press-Wedge by Press-Seal Gasket Corp or Res-Seal by Stokes, Mfg. Corp.

DETAIL OF EXISTING CATCH BASIN
 SCALE 1" = 1'-0"

STANDARD FLAT GRATE AND FRAME
 NO SCALE

COVER BOLT DETAIL
 NO SCALE

CITY OF DETROIT
 CITY ENGINEERING DIVISION, D.P.W.
 BUREAU OF STREETS AND HIGHWAYS

TIREMAN AVENUE BRIDGE OVER ROUGE RIVER (BW-265)
 DRAINAGE STRUCTURE DETAILS

APPROVED: *Gail C. Howard*
 ENGINEER'S SIGNATURE

NO.	DATE	DESCRIPTION	BY	CHECKED BY

PLAN GRADE ESTIMATE FINAL
 N.W. CHECKER
 S.W. REVIEWER

SHEET S-34 OF SHEETS
 CONTRACT NO. 93-22-17
 ASSIGNMENT NO. 93-22-17
 DATE MAR., 1997