

| DATE | REVISIONS |
|---------|---|
| | OLD MAP 3-30-53 |
| | Added Note 'X' 6-12-58 J.E. |
| 6-25-58 | QUANTITY CHANGE FOR ALLEYS RETURN REMOVAL (SEE SHEET #2 FOR QUANTITIES) |

| BEFORE STARTING CONSTRUCTION | |
|--|-------------|
| CONTRACTOR MUST CHECK WITH UTILITIES FOR LOCATIONS OF EXISTING STRUCTURES WHETHER OR NOT INDICATED ON PLANS. | |
| SCALE | |
| LOTS & ALLEYS | 1" = 60' |
| STREET WIDTH | 1" = 60' |
| VERTICAL | 1" = 10' |
| DRAINAGE COMPLETED | |
| PAVING COMPLETED | C.C. 8-4-59 |

| QUANTITIES | | ESTIMATED | |
|-------------------|-----------|-----------|------|
| | | LOTS | CITY |
| EXCAVATION | CU. YDS. | 761 | 713 |
| NEW CURB | LIN. FT. | | 105 |
| PAVING 10-8 10 | SQ. YDS. | 4008 | 269 |
| 10" UNIF. 30.10 | SQ. YD. | | 548 |
| 10" UNIF. 59.10 | SQ. YD. | | 315 |
| TEST CORES | EA. | 5 | |
| SIDEWALK 4" CONC. | SQ. FT. | | 2836 |
| MANHOLES | ADJUST | | 1.0 |
| | CONSTRUCT | | 2.5 |
| BASINS | ADJUST | | 1 |
| | CONSTRUCT | | 10 |
| SEWER-12" | LIN. FT. | | 500 |

| PETITION NO. F.C.C. | | PETITION DATE | |
|---------------------|---------|---------------|---------|
| NO. 325-CO-2 | | 6-4-57 | |
| ASSIGNMENT NO. 935 | | GROUP NO. | |
| BOOK 169 PG. 44 | | LEVEL 3 24 53 | |
| | | DATE 10-12-54 | |
| LOTS 2L | 2039.62 | LENGTH | 1019.81 |
| CITY 2L | 232.88 | LENGTH | 116.44 |
| TOTAL | 2272.50 | LENGTH | 1136.25 |
| DATE OF DRAW G. | | | |

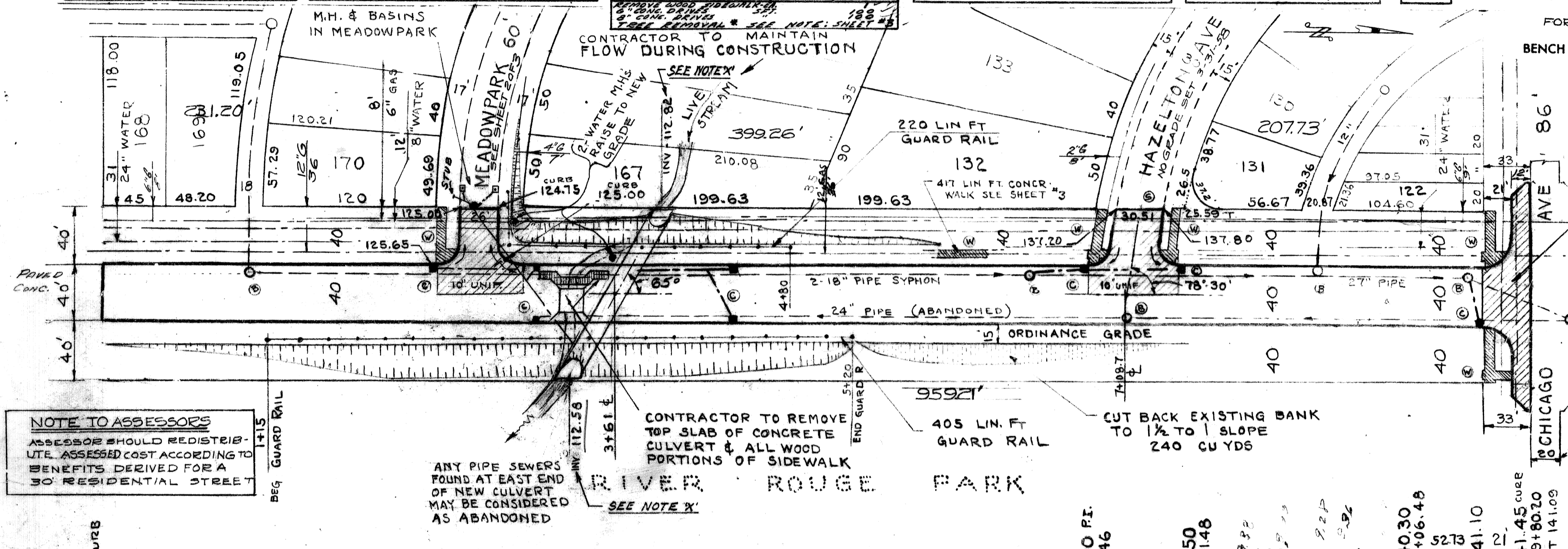
| PLAN | MADE BY | CHECKED BY |
|----------------|---------------------|------------|
| H. Smart | H. Smart | |
| PROFILE | H. Smart | |
| GRADE | J.E. | |
| ESTIMATE | H. Smart | McGREGOR |
| SEWER APPROVED | J. Light | |
| FINAL CHECK | | Dr. Schor |
| APPROVED | B. Wallace | |
| | ENGINEER OF STREETS | |
| | CITY ENGINEER | |

| INDEX NO. |
|-----------|
| 77 |
| 117 |
| INDEXED |

CONTRACT NO. P.W. 3249 F
STREET PAVING PLAN
CITY OF DETROIT
 FOR SHEET NO. 2 SEE MEADOW PARK
 DEPARTMENT OF PUBLIC WORKS - CITY ENGINEERS OFFICE

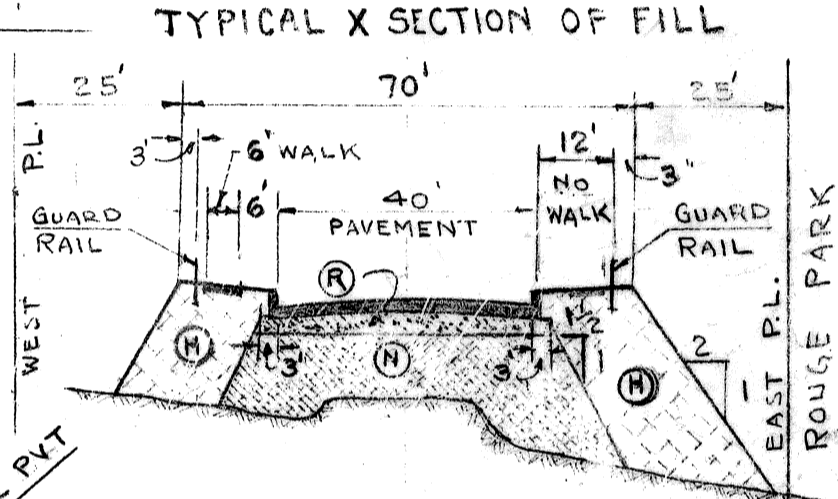
NAME OF STREET WEST PARKWAY
 FROM 959.21' S. OF S.L. CHICAGO
 TO 33' N. OF S.L. CHICAGO
 TYPE OF PAVEMENT 10-8-10 ONE COURSE CONCRETE INTEGRAL CURB
10" UNIFORM AT STREET INTERSECTION EXCEPT AS NOTED
FORCED COMMON COUNCIL 6-4-57

| | |
|--------|---|
| SHEET | 1 |
| OF | 3 |
| SHEETS | |



| BENCH MARKS | ELEV. |
|---|---------|
| P.B.M. # 118.251 N.E. COR. CHICAGO & WEST PARKWAY | 142.64 |
| HYD. - N.W. COR. WEST PARKWAY & MEADOWPARK | 122.23 |
| HYD. - N.W. COR. DOVER & WEST PARKWAY | 141.02 |
| P.B.M. # 118-250 S.W. COR. JOY RD & WEST PARKWAY | 137.987 |

NOTE: FOR SYMBOLS @ ETC. SEE STD. DET. DWG. C-327



- (R) 2 FT. 22-A GRAVEL UNDER PAVEMENT & CURBS
- (N) SUB-BASE MATERIAL SAND GRAVEL TO BE LAID IN 8" LAYERS & COMPACTED TO 90% MAX. LABORATORY DENSITY.
- (H) ANY TYPE EARTH APPROVED BY ENGINEER.

NOTE TO ASSESSORS
 ASSESSOR SHOULD REDISTRIBUTE ASSESSED COST ACCORDING TO BENEFITS DERIVED FOR A 30 RESIDENTIAL STREET

