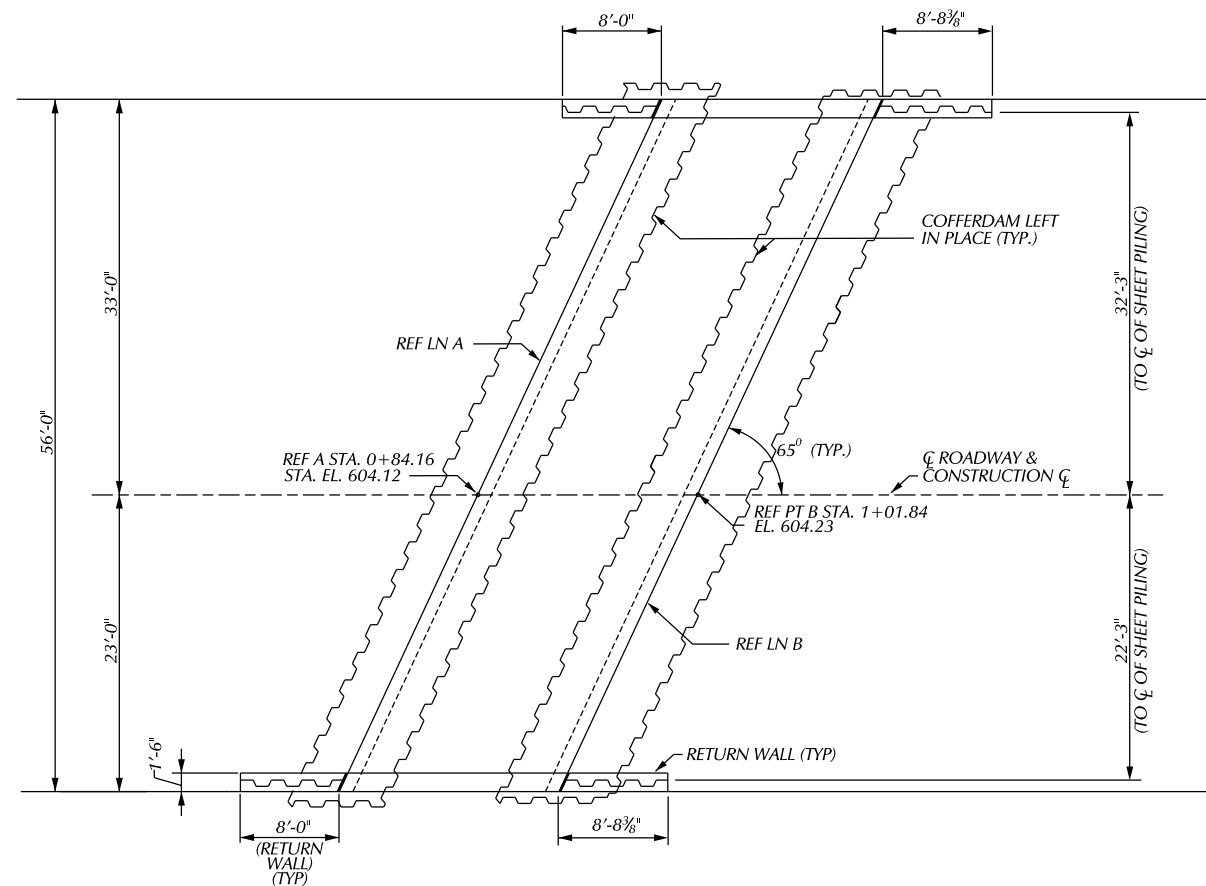
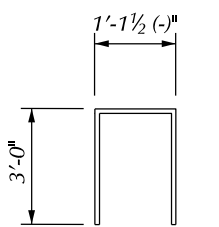




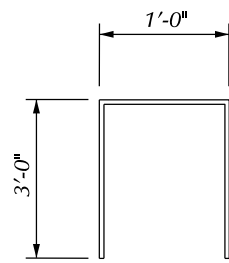
MIN. LAP TABLE
EA 03BEIR 1'-2"



PLAN OF RETURN WALLS



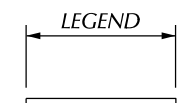
ED060502



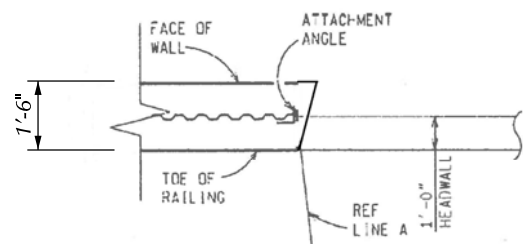
ED060500

EPOXY COATED
BAR SIZE
BAR LENGTH (FT.)
BAR LENGTH (IN.)
EA
BAR SHAPE

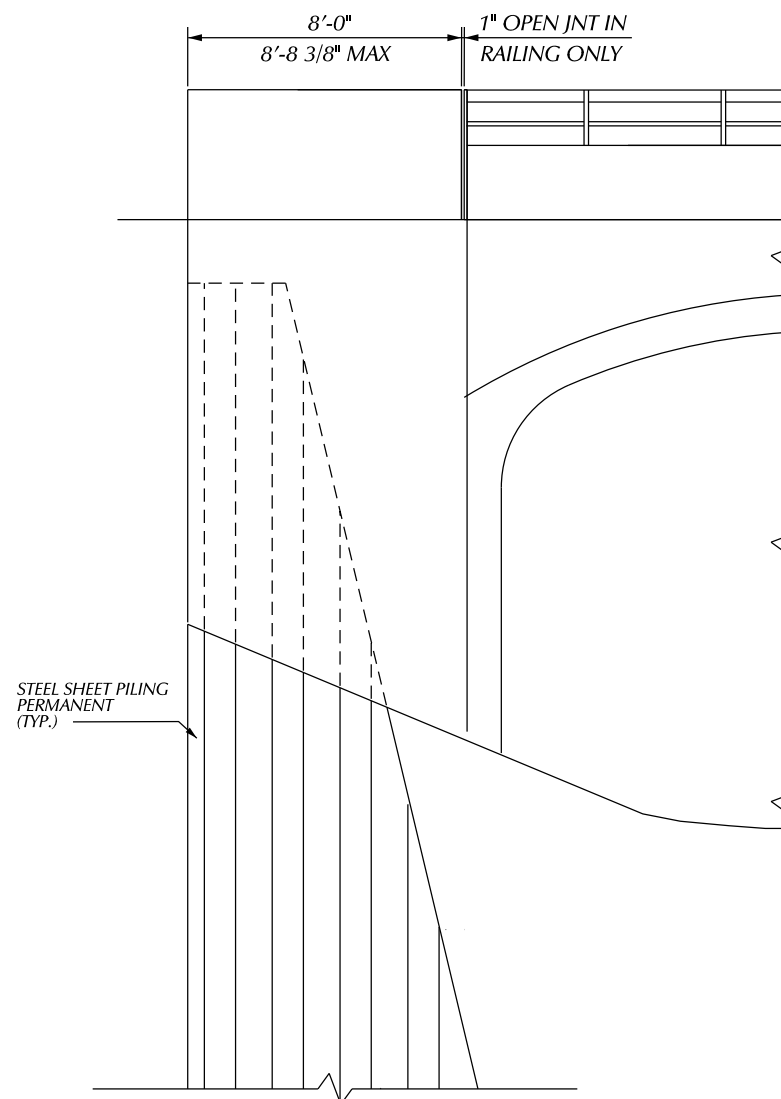
BAR LEGEND



EA BAR



DETAIL



ELEVATION SHEET PILE RETAINING WALL

SUBSTRUCTURE CONCRETE QUANTITIES	
POUR	AMT (CYDS)
A	4.5
B	4.5
C	4.5
D	4.5

MISCELLANEOUS QUANTITIES

810 SFT	STEEL SHEET PILING, PERMANENT
18 CYD	SUBSTRUCTURE CONC.
__ LB	REINFORCEMENT STEEL, EPOXY COATED

NOTES:

ALL PERMANENT STEEL SHEET PILING SHALL BE ASTM A-572, PZ-22, WHERE ALLOWED BY THE ENGINEER. SELECT ALTERNATE HOT ROLLED SHEET PILING WITH A NOMINAL SECTION MODULUS OF AT LEAST 18.1 CUBIC INCHES PER FOOT OF WALL.

ALL LABOR AND MATERIALS REQUIRED FOR CONSTRUCTION OF THE PERMANENT STEEL SHEET PILING REQUIRED FOR CONSTRUCTION OF THE PERMANENT STEEL SHEET PILING WITH TIE NOT BE PAID FOR SEPARATELY, BUT INCLUDED IN THE PAVEMENT FOR 'STEEL SHEET PILING, PERMANENT'.

TIE RODS SHALL BE PLACED AND TIGHTENED BEFORE CASTING THE CONCRETE FACING.

THE USE OF VIBRATORY HAMMERS FOR INSTALLING SHEET PILING SHALL NOT BE ALLOWED.

TOP ROW OF SHEAR STUDS SHALL BE 3" BELOW THE TOP OF SHEETING AND ADDITIONAL ROWS SHALL BE SPACED VERTICALLY AT 1'-6" MAX. BOTTOM ROW OF STUDS SHALL BE 3" ABOVE THE BOTTOM OF CONCRETE ELEVATION.

SHEAR STUDS SHALL NOT BE PAID SEPARATELY BUT ARE INCLUDED IN PAYMENT FOR 'STEEL SHEET PILING, PERMANENT'.

INSTALL RAILING REINFORCEMENT PRIOR TO POURING CONCRETE CAP ON RETAINING WALL PRIOR TO POURING CONCRETE CAP ON RETAINING WALL.

THE CONTRACTOR SHALL PROVIDE & INSTALL A MAT OF 6X6-D6XD6 WELDED WIRE FABRIC IN THE FRONT FACE OF SHEET PILING CAP WHERE STANDARD REINFORCEMENT IS NOT SHOWN. THE COST TO PROVIDE AND INSTALL THE WIRE FABRIC IS INCLUDED IN 'STEEL SHEET PILING, PERMANENT'. PROVIDE A MINIMUM OF 2" OF CLEAR COVER ON ALL SIDES.

PRIOR TO DRIVING PERMANENT SHEETING, THE CONTRACTOR SHALL ANCHOR L 6"x6"x3/4" ANGLES TO THE PEDESTAL WALL, CULVERT AND HEADWALL TO USE AS A DRIVING GUIDE FOR THE SHEET PILING. ANGLES SHALL BE ATTACHED UTILIZING EITHER 3/4" ADHESIVE ANCHORED OR 3/4" EXPANSION ANCHORED BOLTS CHOSEN FROM THE QUALIFIED PRODUCT LIST.

AFTER DRIVING PILING, ATTACHED WEB OF PILING TO OUTSTANDING LEG OF ANGLES WITH 3/4" HIGH STRENGTH BOLTS. ALL WORK AND MATERIALS FOR ANGLES AND CONNECTORS ARE INCLUDED IN 'STEEL SHEET PILING, PERMANENT'.

LOW TEMPERATURE PROTECTION OF CONCRETE SHALL BE APPLIED ACCORDING TO SECTION 706.030 OF THE STANDARD SPECIFICATIONS FOR CONSTRUCTION. LOW TEMPERATURE PROTECTION OF CONCRETE WALL NOT BE PAID FOR SEPARATELY, BUT WILL BE INCLUDED IN THE BID ITEM 'SUBSTRUCTURE CONC'.

EPOXY COATED STEEL REINFORCEMENT		
BAR	NO. REQ'D	TOTAL WT
EA040706	30	153.0
EA040801	30	162.0
EA040406	16	349.0
EA040306	16	325.0
EA040500	40	301.0
EA040502	4	31.0

CITY OF DETROIT CITY ENGINEERING DIVISION - D.P.W. BUREAUS OF STREETS AND HIGHWAYS FOR		WEST PARKWAY CULVERT OVER ASHCROFT - SHERWOOD DRAIN	SHEET OF SHEETS CONTRACT NO. ASSIGNMENT NO. DATE
CITY OF DETROIT CITY ENGINEERING DIVISION - D.P.W. BUREAUS OF STREETS AND HIGHWAYS FOR		SHEET PILE WALL DETAILS	SHEET OF SHEETS CONTRACT NO. ASSIGNMENT NO. DATE